



# the **SCREE**

## Mountaineering Club of Alaska

June 2007

Volume 50 Number 6

Clearly it is not only a question of adventure,  
but a question of love.

A magnetic, irrational, irresistible attraction  
emanating from the mountains themselves.

F. Mariani

**MCA Ski Tour Grand Slam**

**Little Mount Susitna**

**Monthly Meeting**

**Wednesday, April 18th @ 7:30 PM**

**Program: Antarctica, Climate research  
and Climbing by Matt Szundy**

# The Mountaineering Club of Alaska

***"To maintain, promote and perpetuate the association of persons who are interested in promoting, sponsoring, improving, stimulating and contributing to the exercise of skill and safety in the Art and Science of Mountaineering"***

Join us for our club meetings the 3<sup>rd</sup> Wednesday of the month at the First United Methodist Church, 9<sup>th</sup> and G Streets next to the Philips Building (you may use marked parking after hours)

Contact information is provided on the back page or visit us on the web at [www.mcak.org](http://www.mcak.org)

**Cover photo:** Tom Choate makes some turns coming down from Ozone Peak and the Mint Hut on the Bomber Traverse. See the 'MCA Grand Slam of Ski Touring' in this issue. Photo by Greg Encelewski.

**Article Submission:** Articles and photos are best submitted on the web at [MCAK.org](http://MCAK.org). You can also attach a word processing document to an email. Due to formatting problems please do not submit material in the body of an email. We prefer articles that are under 1,000 words. To get on the cover a photo should convey the feeling of mountaineering and show human endeavor.

## Contents

**MCA Grand Slam of Ski Touring**

**Little Mount Susitna**

**Peak of the Month**

**Calendar**

**Adze**

**Meeting Minutes**

**The Stone grows old**

## Hiking and Climbing Schedule

June 9, Mount Yukla

Class G (Glacier Travel); 6,900 feet of elevation gain and 24 miles round trip. Glacier travel experience and equipment required. Contact leader at least 24 hours in advance of trip. Leader: Steve Gruhn 868-9118 (w); 344-1219 (h) [steven.gruhn@hartcrowser.com](mailto:steven.gruhn@hartcrowser.com)

June 18, 5:30 p.m. Homicide Peak

Class D; 4,400 feet of elevation gain and 9 miles round trip. Contact leader at least 24 hours in advance of trip. Leader: Steve Gruhn [steven.gruhn@hartcrowser.com](mailto:steven.gruhn@hartcrowser.com); 868-9118 (w); 344-1219 (h))

June 22-23-24, Annual solstice Kenai climbing weekend

Third outing to the region around Resurrection - Summit Creek - Devil's Passes. Each year we climb 2 or more little-known or unclimbed peaks (44-4900 ft, 2000 ft above camp) and explore off-trail and enjoy spring flowers, etc. as you

desire. This year departing from Devils Pass trailhead Friday afternoon/eve. and turning off trail to climb to a highcamp about 5 miles in. One peak planned for Sat and Sun mornings (we may get two Saturday). Day and overnight climbers welcome. Tom Choate 333 - 5309

July 14 – 15, Hut recon to Elbow Pass (Eska Basin)

Class C, 12 miles round trip, 3000 feet of elevation gain, overnight gear, tents, etc; we will be field-testing a hut site.

Leader: Willy Hersman, [mcak@gci.net](mailto:mcak@gci.net)

July 20 – August 3 Arctic National Wildlife Refuge

Class B/C. The trip may include elevation gains over 2,000 feet on day hikes. Destination will be Lake Peters to Canning River with possible climb up Mt Chamberlin or set up base camp at Red Sheep airstrip along the Chandalar River and do 2 one week loop trips in the area. Leader: Don Hansen, [donjoehansen@msn.com](mailto:donjoehansen@msn.com)

## Annette's Corner

July Meeting: The annual club picnic takes the place of the July meeting and will be held rain or shine at Valley of the Moon Park's picnic shelter. The park is located along Arctic Blvd. in the Chester Creek Valley, alongside the creek and trail. Bring something to share: salad, side dish, or desert. Hamburgers, veggie burgers, hot dogs, condiments, drinks, eating and drinking apparatus and grills will be provided. See you there!

Thanks to Don Hansen and Wayne Todd for sharing their slideshows at the May meeting.



# MCA Grand Slam of Ski Touring

By Greg Bragiel



Along the Bomber Traverse

The idea of doing all the classic ski tours in the Anchorage area in one season was first conceived in the fall of 2006. These trips had been done by many of us over the last few seasons, so why not do all of them in one season, all in a row? Why not call it the Grand Slam of Ski Touring?

## Lane Hut November 24-26, 2006

Three of us skied in the day after Thanksgiving with hopes of doing some turns on the slopes surrounding the hut. The wind event the week before had transported a significant amount of snow and made crust, slabs and poor skiing conditions prevalent. Skiing out on Sunday day morning, we observed Steve Parry and his team descending into Archangel Valley from Snowbird pass.

Participating: Jen Novobilski, Ray Nabinger and Greg Bragiel

Ray Nabinger and Jen Novobilski at the Lane Hut



## **Powder Hut January 27-28, 2007**

Yukiko Hayano and Randy Plant



Plenty of snow and a groomed track to Notch Mountain made the right combination for this trip. The Chugach Powder Guides were very hospitable to us. We struggled in the deep powder and realized that our skinny skis were no match for the wide power boards the guided clients wore. Heat, lights, stove, sofa lounge, plenty of food and conversation made for a very enjoyable weekend.

Participating: Sam Pepper, Rick Hagen, Yukiko Hayano, Randy Plant, Donna Klecka, Eric Holloway, Martin Ksok, Andy Rembert and Greg Bragiel

## **Indian to Arctic February 24-25, 2007**

Amy Maclean



An 8 AM start found us at the Indian trailhead and heading up into the powder and sunny skies of Indian Pass. Wind the week before had scoured the

slopes to the north of the pass making for a tricky descent to the confluence area. We camped near the ford site enjoying good food and each others company while trying to keep warm in the -15 F temperatures. Thanks Stu! Everyone enjoyed the ski out on Sunday as we observed a dozen or so skiers heading southbound.

Participating: Rick Hagen, Randy Plant, Yukiko Hayano, Tom Mc Dermott, Sam Pepper, Laddie Shaw, Amy Maclean and Greg Bragiel

## **Resurrection Trail March 1-4, 2007**

Greg Bragiel



This classic started mid day at the Bean trailhead. The snow machines had been off the trail for two weeks; however it was still a washboard on the south side of the pass. We walked for a while to relieve the unnerving feeling of the wash boarded track. We lunched at the Romig cabin which is brand new and very nice. We stayed at Swan Lake the first night. On day two we stopped at the new Devils Pass cabin for lunch and then over the pass and expected to be blasted by the wind; however, there was hardly a breeze. Stayed at Uncle Billy's cabin and enjoyed the warmth of the wood stove. We negotiated the dips, hills and curves into and out of all the drainages while Ray demonstrated his great skiing skills with the rest of us playing it safe at times and walking down the icy trails. Stopped at Caribou Creek night three and then out to Hope in beautiful sunshine and warmth the last day. We cleared blown down trees off the trail along the way.

Participating: Randy Plant, Yukiko Hayano, Sam Pepper, Ray Nabinger and Greg Bragiel

## **Bomber Traverse March 25-31, 2007**

My idea for this traverse was to make it enjoyable for all participants. Therefore we alternated travel days with rest, exploration days. We skied under clear and cold skies. A few of us skied from



## Tom Choate on the Bomber Traverse



Snowbird Hut to a pass overlooking the Lane Glacier and observed snow machine tracks leading to the eastern pass. Moving to the Bomber Hut on day three we observed snow machine tracks on the Snowbird Glacier and Bartholf Creek and found snow machine supplies placed inside and outside the Bomber Hut. I called Ranger Kim on the satellite phone and found out that snow machining in this area is not illegal. Everyone was disappointed that the snow machines are now moving farther into the mountains. We also did some exploring up valley toward Montana and Ozone Peaks. At the Mint Hut we did some touring of the Mint Glacier toward the base of Spearmint Peak; however, deemed it too dangerous to climb that day, then to Grizzly pass to find the snow machines had been there also.

Participating: Greg Encelewski, Tom Choate, Donna Klecka, Amy Maclean, Yukiko Hayano, Randy Plant, Sam Pepper and Greg Bragiel

## Eklutna Traverse April 29-May 3, 2007 Rosie's Roost



The purpose of doing the Eklutna Traverse this year was to enjoy the traverse and climb some peaks along the way. Three of us made an attempt on Ovis Peak. Dr. Choate was successful while Sam and I turned back 300' from the summit as the weather made conditions rather slippery. The crew that stayed near the hut accomplished a much needed roof repair this day. At Hans' we elected to explore Blackout Pass, peak 6545, enjoy the wonderful vistas and do some turns on the hill behind the hut. Stopped to do some ski repairs on the way to Rosie's and as we made our way across the Eagle saw a fixed wing airplane circling over the hut. The plane made two passes over us and on the second came in low and to the side. Unfortunately, the pilot crashed just northwest of us. We rushed to help him and immediately called for help on the satellite phone. The Air National Guard arrived about 2 ½ hours later to evacuate the pilot to Alaska Regional Hospital and returned to give us a ride out. This was an abrupt and sad ending to a great trip. The pilot is recuperating from his injuries.

Participating: Sam Pepper, Tom Choate, Julia Perilla, Brian Garcia, Chris Riggio and Greg Bragiel





# Little Sisters and Bulldozers

By Tim Kelley

Mt. Susitna has a shy little sister. From Anchorage you can see a bit of her, but not much. She hides behind her sibling to avoid the lights from the big city. She's private and elusive. It took several attempts to get her to agree to meet me.

Finally, this March, I cross country skied to Little Mount Susitna's summit. It took me several tries to do this because I was intent on linking together mythical and secret trails I had heard rumors about to get to the base of this remote Susitna Valley ridge. On previous tries the trails were either not in, or I just couldn't find them.

**Tim Kelley on Little Mt Susitna points to Mt Susitna**



You might ask: "Why all the fuss? Why not just get on a pair of randonne skis and bash through the woods to access this peak? Or maybe use snowshoes, instead of cross country racing skis?" Well, there are a few reasons I don't take these approaches.

First – I like winter trail exploring. To me it's the winter equivalent of summer bagging of peaks I've

never been up before. Maybe call it "winter trail bagging". Finding and skiing remote trails put in, and guarded in secrecy, by remote cabin owners, trappers and snowmobile explorers is just plain fun. You become intimate with remote areas of Alaska. And it is always intriguing to meet the folks you find out on the fringe of civilization. Usually a half hour talk with these types leaves you with a lifetime of good stories (like the one I will be re-telling soon).

Another reason I use cross country skis instead of wide boards or snowshoes is patience. I was reared on skinny skis and like to cover ground fast. So I just don't have a lot of patience for slow slogging, though inevitably this sometimes becomes part of my game. Finally, I choose skinny skis because they are all I own. I don't own any alpine, randonnee or telemark skis. No wide boards at all. And I've never used skins. So I'm a "44-millimeter-width" ski-geek to the core.

I can't describe my route to Little Mount Susitna out of respect to the folks whose trails I skied. They might shoot me if I talked. And I wouldn't hold it against them. Actually, shooting folks near Mount Susitna is not just macho chatter. It happens. One day while skiing from Tyonek to Alexander Creek I realized I skied past sites of three murders in the past 10 years. I actually know two of the three folks that pulled the triggers. They're super nice folks when they aren't drunk ... but that's another story.

In "Shem Pete's Alaska" Little Mount Susitna is referred to as Henq'edishla, or 'The Little Upland One'. Like Mt. Susitna you feel a presence from the past on Little Mount Susitna. Native peoples once traveled here extensively. In Shem Pete's book he mentions of this area: "Some young people ... they got all the meat they wanted and just stayed [up] there all winter." The meat Shem Pete



was referring to was likely caribou. This would be excellent caribou range and local stories talk about caribou being in this area into the early 1900's. The summit of Little Mount Susitna showed a more recent, and potentially grim, sign of a previous visit – a wing strut from a Super Cub.



I might mention that Little Mount Susitna is not what old-timers of this area call this summit. They call this 3035' peak Theodore Mountain, as it is at the headwaters of the Theodore River. Instead, they refer to the more northerly 2770' sub-peak as Little Mount Susitna. I'm not implying that the map is wrong, or local names are right. I'm just noting that here, as in many places in Alaska, there are discrepancies in geographic names.

Speaking of local stories, here is a good one that was told to me by the son of Carl Thomas when I first met him the day I skied Little Mount Susitna. In the early 60's Carl and a friend of his "walked a cat", i.e. slowly drove a bulldozer, from Knik out the Old Iditarod Trail. They were heading to remote property Carl owned. The bulldozer would be used to make a landing strip for Carl's Super Cub. It took them 5 days to get the cat to the base of the north ridge of Mount Susitna. Most of the route they traveled is now used by the Susitna 100 winter multi-sport endurance race.

At the base of the north ridge the snow got too deep to move the cat. So they left it and snowshoed back to Knik. That spring they flew Carl's Super Cub out and landed on the top of Mount Susitna. After anchoring the plane they hiked down the long north ridge of Mount Susitna and found the bulldozer near Wolverine Creek.

They had several miles to go to get the bulldozer to Carl's cabin site. But when they went to fire up the dozer, they found the battery was dead. This was a show stopper. So they pulled out the battery, strapped it to a pack board and began hiking back up Mount Susitna.

Once above treeline they encountered a military helicopter supporting troop training maneuvers on the ridge. They asked the helicopter pilot for a ride to the top, but the pilot said 'No!'. Miffed, they trudged on to the summit in deteriorating weather. On top the weather was too bad to take off, so the hunkered down in the Cub overnight and then flew out the next day.

A few weeks later they flew back out and landed on top of Mount Susitna. This time they hiked down the north ridge with a charged bulldozer battery. But by now the foliage had come out. So a lot of time was spent randomly bushwhacking and searching, while packing a heavy battery, before they found their bulldozer. They were able to get the dozer started, walked it to Carl's cabin site, plowed out a runway and then hiked back to the summit of Mount Susitna to fly out in the Cub.

"Shem Pete's Alaska" mentions early white man climbs of Mt. Susitna in 1902 and 1906. So Carl Thomas' treks on Mt. Susitna were long preceded by these climbs and by many Denaina Athabascan ascents. But Carl and friend's 1960's "inverse" climbs of Mt. Susitna are good stories to add to Mount Sustina's legend ... along with Stu "Susitna" Grenier's many climbs up this peak!

#### Ice Bridge



# Peak of the Month

by Steve Gruhn

Name: **Fiddlehead Mountain**

Mountain Range: Kenai Mountains

Borough: Kenai Peninsula Borough

Drainage: Gulch Creek

Latitude/Longitude: 60°45'19" N, 149°18'29" W

Elevation: 4940 feet

Prominence: 3990 feet from Bench Peak

Adjacent Peaks: Peak 4650 near Gulch Creek and

Peak 4430 near Granite Creek and Gulch Creek

Distinctness: 890 feet from Peak 4650

USGS Map: Seward (D-7)

First Recorded Ascent: before 1968

Route of First Recorded Ascent:

Unknown

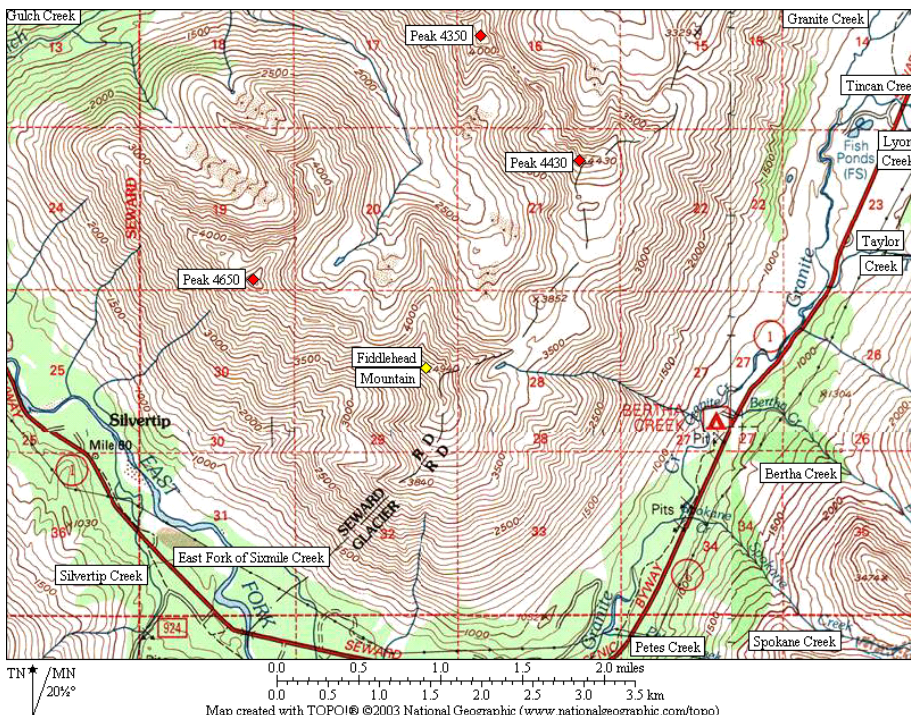
Access Point: Granite Creek

Campground

The first mention of the name Fiddlehead Mountain for this peak is found in J. Vin Hoeman's mountain journal when he described an ascent of Peak 4430 with his wife, Grace, on June 15, 1968, as being north of Fiddlehead Mountain. They found a handkerchief in a cairn on that summit. On September 24 of that year, the Hoemans returned to the area, climbed Fiddlehead Mountain, found some cans on the summit that appeared to have

been from the previous year, built a cairn, and left a register. In the 1969 American Alpine Journal, Vin subsequently wrote that Fiddlehead Mountain was a popular one-day climb in summer and winter with ascents too numerous to record.

The first mention of this peak in the Scree was Tom Choate's account of a June 8, 1991, MCA climb, which appeared in September 1991. The group headed up the south ridge and found a frozen shrew on a false summit. Unaware of Vin Hoeman's earlier accounts, the party dubbed the peak "Shrew Top."



## Calendar Committee

Stu with the Calendar Committee is collecting horizontal photos for the 2008 MCA Calendar. Photos should be 8x10 or 8x12. He plans on collecting your submissions until the committee has enough quality shots to make a respectable 50th anniversary Calendar. You can make an 8x10 for a couple of dollars at Costco. Contact Stu at oinkmenow@hotmail.com or 337-5127 to get your shots to him or just bring them to an MCA meeting. Watch the Scree to know when the voting will be. It will be no later than the September meeting. Shots submitted to the 2007 competition will also be added to the 2008 competition. Many excellent shots did not make it in. Thanks for supporting this project.

## Adze

Free

\*\* MSR XGK multi-fuel expedition stove. Mid-90's model, rigid fuel line.

\*\* Wild Things Andanista 5000 cu inch pack. Late 90's model, technical alpine climbing.

\*\* Lowe Snowpeak 50 3000 cu inch pack. Late 90's model, technical day pack.

\*\* Patagonia stretch capilene union suit. Late 90's model, stretch drop seat. Size XL.

\*\* OR Expedition mitt liners. Size L/XL.

\*\* OR Gore-Tex winter hat with brim.

I upgraded, you get free gear! First come, first served. david.hart@pxd.com, 868-2673 h, 244-1722 c

Notice

Iridium Satellite Phone for rent. \$70/1st week. \$5/day thereafter. Great for climbing, paddling, remote activities. Dave Hart, 868-2673 h 244-1722 c david.hart@pxd.com



Looking For  
Rear elevator piece-wire part, for silvretta 400 binding or  
a whole binding  
kate 748-7300

#### For Sale

I have 3 pairs of Rock Climbing shoes for sale. 1 pair -  
Five-Ten Mojave \Lace Style - size US 8.5 EU  
41.5\)(\\$50.00\). Never Worn; 1 pair La Sportiva Cobra  
\(slipper style size US 8.5 EU 41\)never worn \(\$40.00\);  
1 pair La Sportiva Cobra \Slipper Style, size US 8.5 EU  
41\) worn 5 times bouldering and are in perfect  
shape\(\$35.00\). Prices are firm...

Sean Lowther, 696-8512  
messierobject100@yahoo.com

#### Partners Wanted

Augustine Volcano Paddle Climb. Leaving from  
Anchorage late June or early July. Expected length 20  
days or so. An international team seems to have been  
formed for this one. If you are in a single you need to  
have your roll down solid and everybody needs wet suits  
or dry suits. Hope to take a shot at Slope Mt. on the way  
down. May have one spot in a double available for  
someone with an open schedule and known abilities.  
Bears, alders, mud, and very cold water with weather  
likely.

Stu Grenier oinkmenow@hotmail.com 337-5127

### Board Meeting Minutes May 2, 2007

#### I. Call to Order 6:08 pm

#### II. Attendance: Sean Bolender, Annette Iverson, Bridget Paule, Travis Taylor, Randy Howell, Don Hansen, Andy Rembert, Sarah Ellen Hutchison.

#### III. Old Business:

Online Membership Renewals—There have  
been a few problems with members not  
completing the online renewal completely or  
correctly and then not printing out their receipts.  
Several months may pass before they realize  
there is a problem and we have no records of  
their registration attempt. At meetings, Travis  
has simply been having them fill out a waiver  
and giving them a membership card. Also, it  
seems that trip leaders currently have no way of  
checking for membership status for trip  
participants. It would be useful to have a roster  
of this year's paid members available online,  
even if it only has names and no contact  
information. Sean suggests inviting Willie to a  
future board meeting to discuss the MCA  
website and associated issues.

Bylaws—Willie updated the website with the  
most current version of the Commercial Use of  
Huts policy. Steve Parry drafted a new Gear  
Replacement policy, which was reviewed and  
commented on by the board prior to this  
meeting. It was moved, seconded and  
unanimously approved that we accept this new  
policy (see attachment following minutes for  
policy language).

AMH ice tools update—AMH has refused to  
accept reimbursement for the stolen tools and  
will make arrangements for the future so that all  
demo gear is checked out directly from the  
store for better accountability and tracking.

Trip Leaders—Annette has only received four  
positive responses to her email to potential trip  
leaders asking if they'd like to be notified of trips  
that need leaders. This is not enough to make a  
good list. We recommend continuing to make  
announcements for trip leaders at each  
meeting.

July Picnic—The annual July picnic will take  
place Wednesday the 18<sup>th</sup> at Valley of the Moon  
Park. We'll arrive at 7:00 for setup.  
Traditionally, we supply hotdogs, buns and  
some drinks. Annette has a box of supplies as  
well as charcoal and lighter fluid; she'll  
inventory the supplies and we'll finish planning  
at the July board meeting.

#### IV. New Business:

Next Meeting: Wednesday, July 11<sup>th</sup>, 6:00 pm  
at the Snowgoose. NO June board meeting.

#### V. Adjourn 7:30 pm

Submitted 5/10/07  
Bridget Paule, Secretary

### Membership Meeting Minutes April 18, 2007

#### 1. Call to order, 7:38 pm

#### 2. New Members: We welcome nine new members and guests, plus eight APU geology students.

#### 3. Treasurer's Report: New member sign up tonight and online renewal for existing members. Patches on sale for \$5, t-shirts are \$20. Year to date Income: \$6,071.45. Year to

date expenses: \$5,177.51. Total in all accounts: \$24,870.24.

4. Committee Reports:

Training Comm., Steve Parry. The last installment of the beginning mountaineering class has wrapped up successfully. Thanks to all the instructors and students.

Hiking & Climbing, Randy Howell. For a complete trip list, please see the Scree, and visit the MCA website. You can also sign up on the MCA listserve for updates on unofficial trips.

Calendars, Stu Grenier. We will be collecting 8x10 and 8x12 horizontal photos all summer, with a vote in August or September. Submit your full-size photos now for our 50<sup>th</sup> Anniversary photo calendar.

5. Announcements: Stu will be returning to Mt. Susitna, by kayak, for a 10-day paddle climb beginning May 20<sup>th</sup>; see him if interested. Stan announces a benefit slide show next Wednesday, April 25<sup>th</sup>, at 7:00 pm in the Alaska Wildberry Theater. The Alaska Rock Gym is raising money to send their teen group to Portland, OR for the regional qualifying competition for the USA Climbing Program. The event features various presenters including Roman Dial..., as well as an auction and a raffle. Suggested \$5 donation. John Recktenwald is celebrating his 60<sup>th</sup> birthday tonight—Happy birthday John! Jennifer DuFord is collecting items for a care package for two MCA members who are serving on newly extended tours in Iraq. If you have anything you'd like to contribute, please contact her.

6. Presentation: Roger Robinson, Chief Climbing Ranger at Denali National Park presents "Denali, a 30 year perspective."

Submitted 4/18/07  
Bridget Paule, Secretary

## Board Meeting Minutes April 4, 2007

1. Call to Order 6:17 pm
2. Attendance: Sean Bolender, Annette Iverson, Bridget Paule, Travis Taylor, Sarah Ellen Hutchison, Randy Howell, Don

Hansen, Steve Gruhn, Steve Parry, Greg Bragiel.

3. Old Business:

4. Winter trip schedule—This was mildly successful, although Sean led the majority of the trips and a few were canceled. We need to review the numbers to determine the success rate of seasonal trip planning. Sean will be gone for the scheduled April 21-22 ski trip to Lane Hut and surrounding peaks; perhaps Randy Plant will take the lead. Sean will also be out of town for the general meeting earlier that week.

5. Summer trip schedule—Annette sent out a letter several days ago to trip leaders who have been trained in the past seven years asking who wanted to receive information on leading upcoming trips, and has gotten several replies back already. It is decided not to plan any organized trips for the summer due to everyone's full schedules. However, Steve Parry is considering some rock climbing trips and Annette is looking at a 2-3 day trip in the upper Winner Creek area.

6. IRS paperwork—Travis has taken care of this and just needs to write the check to keep us incorporated as a 501 (c) 7 recreational group.

7. Huts Policy Report—After a review of current and published hut policies, Bridget found that an outdated version of the Commercial Use of Huts policy is posted on our website. In addition, the general Huts Use Policy needs some revision and a few updates to the huts web page might help clarify our positions. Bridget will submit current policies to Willie Hersman for updating the web page and further policy review will occur in April. It is decided to post new signs on all huts regarding non-commercial use. Memberships have been coming in from Matt Szundy's clients at the Ascending Path, and he has talked to Greg about helping with hut maintenance.

8. July Picnic—After extensive research into Anchorage parks, Annette has reserved Valley of the Moon for our summer picnic. It costs about \$60-75 for the evening.

9. New Business:



10. Lost and damaged gear—A set of ice tools went missing from the Ice Festival last fall and the board has only just now been told of the matter and presented with a bill by AMH to replace the tools (at an extremely reasonable price). Also, some instructors recently lost some ice screws while teaching the mountaineering class. We currently have no policies addressing lost and damaged gear. Steve Parry agreed to draft a policy outlining MCA, vendor, trip leader and student responsibilities regarding lost and damaged gear under a variety of circumstances. This draft will be discussed at the next board meeting, May 2<sup>nd</sup>. For now, a motion to pay AMH this time and to replace the instructors' gear is approved unanimously. In addition, Sean will speak to Paul at AMH about their responsibility for their demo gear.

11. Hut Poopers, etc.—Greg approached the board with several outhouse designs and building cost estimates to get some help and direction. Both the primary options will run \$4,000 - \$4,500 including materials and labor. The Mint hut is the highest priority and Greg got the go-ahead to use the \$6,000 budget we allotted for hut projects to work on a porcupine-proof metal outhouse

design. Outhouse plans will be posted at a meeting near you. Also, Greg brought pictures of gear a snowmachiner had brought in to the Bomber Hut, including a generator and fuel. Greg contacted the fellow, who thoughtfully put his name and number on his gear. He can't walk well, and is caching supplies at several stations in preparation for a long back country traverse. The man was informed that he can't leave anything at any of our huts. He was open to helping us haul items in to the huts, however. Finally, there is a locked metal box at the Mint Hut with no name or markings. Greg wants to cut it open next time he is there and is advised to put a notice in the Scree and the listserve before doing this.

12. Powderhouse Hut—Greg heard that the Chugach Powder Guides have assumed responsibility for this hut.

13. Next Meeting: Wednesday, May 2<sup>nd</sup>, 6:00 pm at the Snowgoose.

14. Adjourn

Submitted 4/18/07  
Bridget Paule, Secretary

The stone grows old  
Eternity is not for stones.  
But I shall go down from this airy place, this swift white peace,  
this stinging exultation,  
And time will close about me, and my soul stir to the rhythm  
of the daily round.  
Yet, having known, life will not press so close,  
and always I shall feel time ravel thin about me,  
For once I stood  
in the white windy presence of eternity.

Eunice Tietjens

# Mountaineering Club of Alaska

President	Sean Bolender	333-0213
Vice-President	Annette Iverson	222-0581
Secretary	Bridget Paule	230-9903
Treasurer	Travis Taylor	382-4823

Board member	Steve Gruhn	344-1219
Board member	Don Hansen	243-7184
Board member	Randy Howell	346-4608
Board member	Andy Rembert	688-3230
Board member	Sara Ellen Hutchison	382-7097

Annual membership dues: Single \$15, Family \$20

Dues can be paid at any meeting or mailed to the Treasurer at the MCA address below. If you want a membership card, Please fill out a club waiver and mail it with a self-addressed stamped envelope. If you fail to receive the newsletter or have questions about your membership, contact the club treasurer. The Post Office will not forward the newsletter.

The 'Scree' is a monthly publication of the Mountaineering Club of Alaska. Articles and notes submitted for publication and other communication related to the newsletter should be submitted on the web at [www.mcak.org](http://www.mcak.org) or mailed to Scree Editor Box 102037 Anchorage Alaska 99510. Articles should be received by May 16<sup>th</sup> to be in the June Issue.

Paid Ads may be submitted to the attention of the Vice-President at the club address and should be 'camera ready' and pre-paid.

Missing your MCA membership card? Stop by our monthly meeting to pick it up or send a self-addressed stamped envelope and we'll mail it to you.

Mailing list/database entry: Yukiko Hayano and Randy Plant 243-1438  
Hiking and Climbing Committee: Randy Howell – 346-4608, Jayme Dixon – 382-0212  
Huts: Greg Bragiel - 569-3008  
Calendar: Stuart Grenier 337-5127  
Scree Editor: John Recktenwald 346-2589  
Web: [www.mcak.org](http://www.mcak.org) (change your address here)  
Mailing list service: [MCAK@yahoogroups.com](mailto:MCAK@yahoogroups.com)

Mountaineering Club of Alaska  
Box 102037  
Anchorage AK 99510