

ADF&G Point Thomson Area Stream Fish Sampling

August 1-8, 2002

Trip Report

Jack F. Winters

William A. Morris

From August 1 through 8, 2002, the Alaska Department of Fish and Game (ADF&G) conducted fish surveys in streams crossed by the proposed Point Thomson Gas Cycling Project. The stream surveys were designed to provide preconstruction fish and water quality data for selected streams in the Point Thomson proposed development area, to provide data to support permit applications, and to make and support permit decisions.

Fish were captured with fyke nets set within the streams or in lakes attached to the streams. The wings and leads of the nets were set to capture fish moving upstream and downstream. Nets were fished from 2 to 3 days at each net site. One net was set in the Alaska State #1 flooded material site. Net sites were selected to coincide with or just upstream of the proposed pipeline, road, and material site locations. Generally, two nets were set in streams crossed by the proposed facility roads and infield pipeline. One net was set in streams crossed by the proposed sales pipeline. Dolly Varden and fourhorn sculpin were measured and released. Ninespine stickleback were counted and released, but not measured.

Water quality parameters (temperature, specific conductance, pH, dissolved oxygen concentration, and dissolved oxygen percent saturation) were measured at each net site with a Hydrolab® Minisonde® water quality microprobe connected to a Surveyor® 4 water quality display unit.

Fifteen streams and one flooded mine site were sampled for fish. All fifteen streams contained ninespine stickleback as did the flooded Alaska State #1 mine site. Seven of the fifteen streams contained anadromous juvenile Dolly Varden, which ranged in length from 115 to 220 mm. One sample site also contained 12 fourhorn sculpin.

Catches of Dolly Varden were low, ranging from 0 to 6 per day per net. The total catch of Dolly Varden was 42 fish. Catches of ninespine stickleback ranged from 0 to 398 fish per day per net. The total catch of ninespine stickleback was 3078 fish.

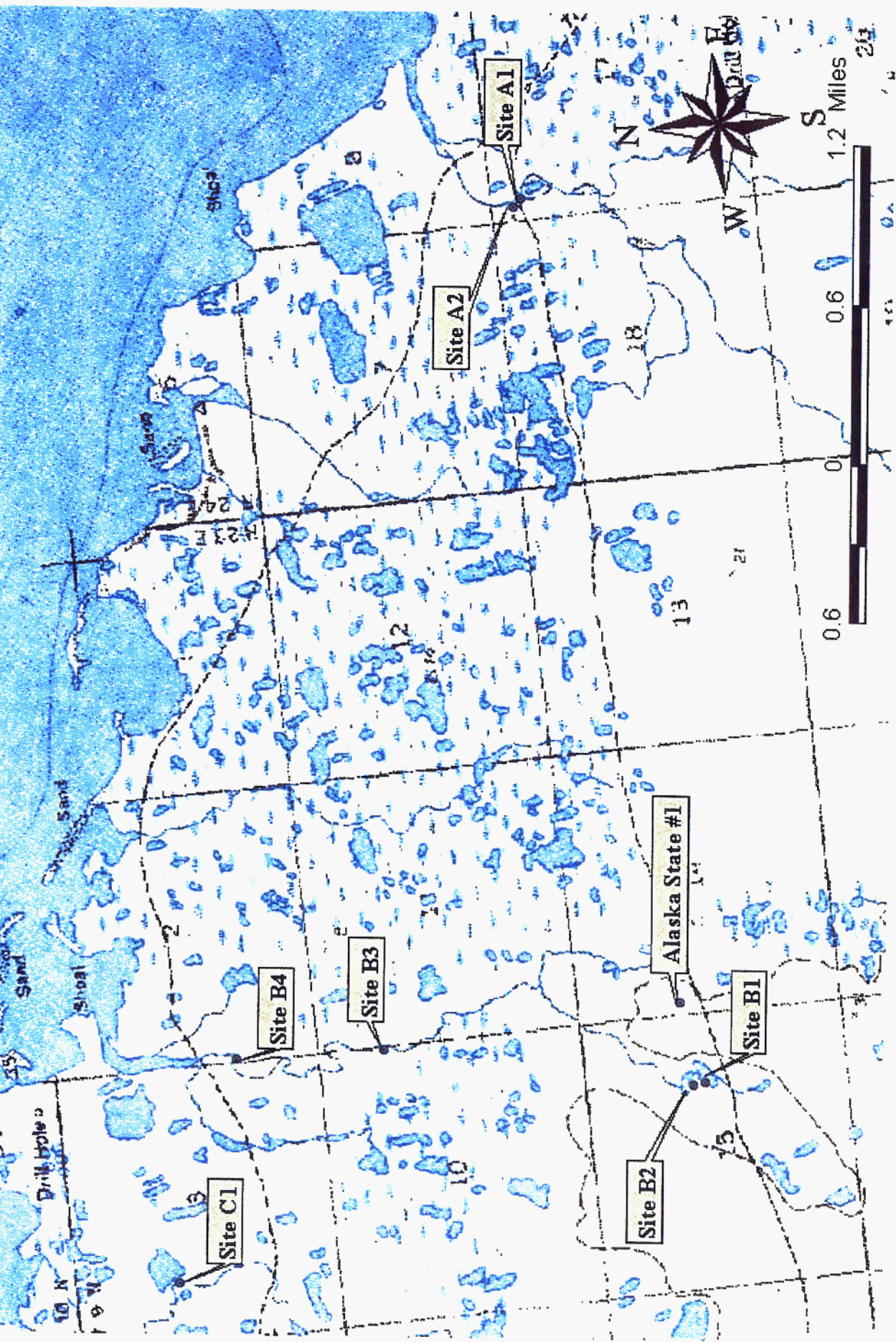
Table 1. Point Thomson Fish Data Summary

Point Thomson 2002 Fish Data		Dolly Varden		Ninespine Stickleback		Fourhorn Sculpin		
Sampling Site	Location	Day 1	Day 2	Day 1	Day 2	Day 1	Day 2	
	North							
	West							
		Dates Fished						
		Total	Total	Total	Total	Total	Total	
A1	70.14051	146.11674	8/1-3	1	4	90	59	149
A2	70.14055	146.11795	8/1-3	2	0	38	62	100
B1	70.13532	146.25753	8/1-3	0	0	40	106	146
B2	70.13591	146.25775	8/1-3	0	0	100	104	234
B3	70.15259	146.24729	8/3-6	5	1	92	57	149
B4	70.16076	146.24638	8/1-3	4	4	24	34	58
AK State #1	70.13624	146.24476	8/1-3	0	0	40	157	197
C1	70.16509	146.27980	8/1-3	0	0	0	3	3
C2	70.16782	146.28763	8/3-6	1	0	398	28	426
D1	70.16491	146.32660	8/1-3	0	0	20	16	36
D2	70.17102	146.33125	8/3-6	4	3	45	5	50
E1	70.16877	146.38566	8/3-6	0	0	119	41	160
E2	70.17321	146.37754	8/3-6	0	1	190	49	239
F1	70.16168	146.43918	8/3-6	0	0	78	79	157
F2	70.17173	146.44643	8/3-6	1	0	16	6	22
G1	70.17464	146.50172	8/3-6	0	0	270	103	373
H1	70.16697	146.53970	8/6-8	0	0	43	74	117
I1	70.16277	146.59185	8/6-8	0	0	12	7	19
J1	70.15994	146.63157	8/6-8	0	0	10	8	18
K1	70.15552	146.69080	8/6-8	0	0	28	33	61
L1	70.15164	146.75691	8/6-8	5	6	33	42	75
M1	70.14583	146.83076	8/6-8	0	0	16	33	49
N1	70.14130	146.86477	8/6-8	0	0	13	15	28
O1	70.13793	146.93698	8/6-8	0	0	78	134	212
Totals				23	19	1793	1255	3078
						42		12

Table 2. Point Thomson water quality data.

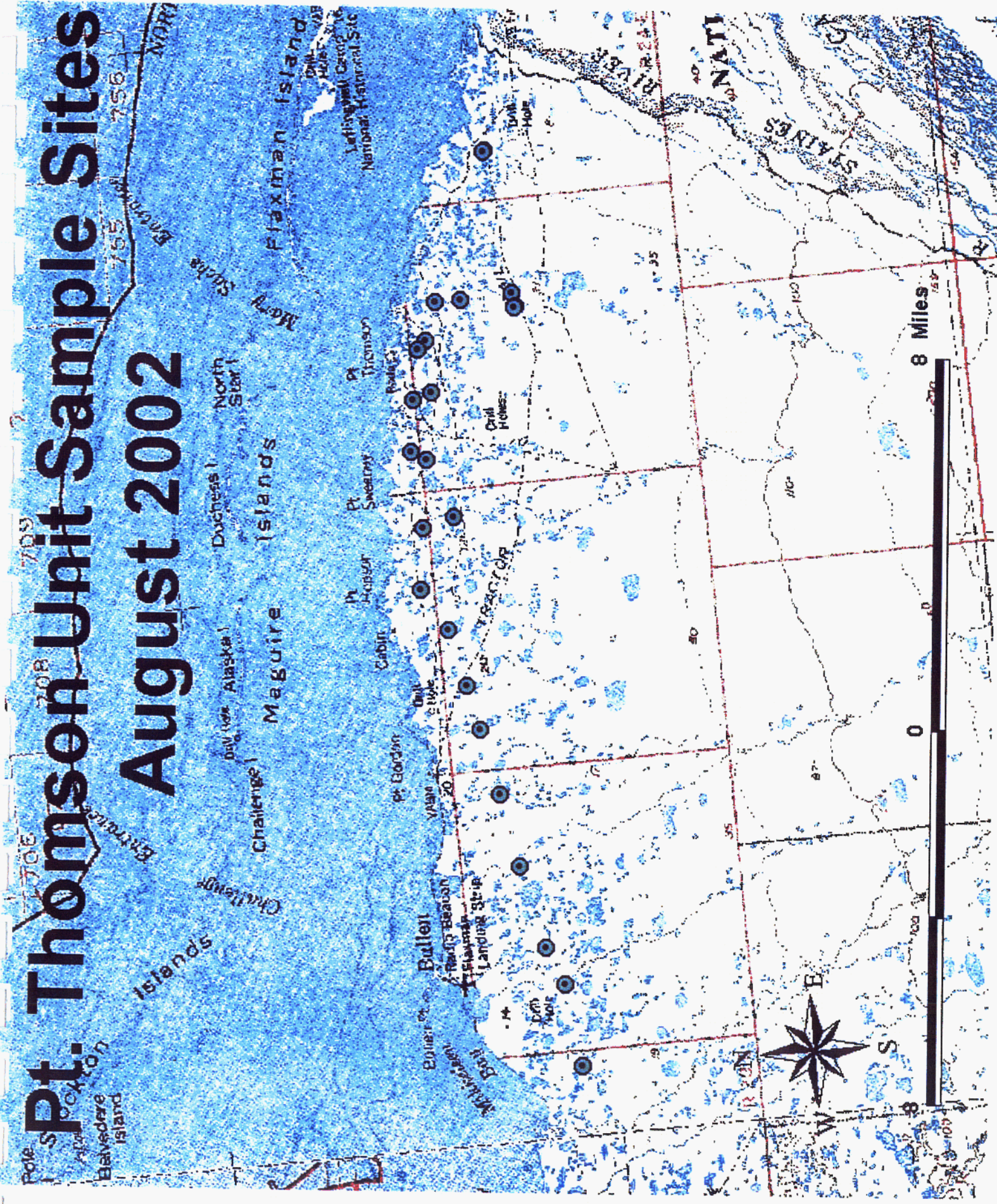
Point Thomson Area Stream Water Quality Data, August 2002						
Sampling Site	Date	Temperature °C	Specific Conductance µS/cm	pH	Dissolved Oxygen mg/L	Percent Saturation
A1	8/3/2002	12.89	300.2	8.01	9.90	93.2
A2	8/3/2002	12.65	303.2	8.02	9.89	92.7
B1	8/3/2002	13.74	204.3	7.89	10.15	97.3
B2	8/3/2002	14.16	203.2	7.77	9.84	95.0
B3	8/3/2002	12.10	247.4	7.80	8.88	82.2
B4	8/3/2002	15.91	273.8	7.86	8.37	84.2
AK State #1	8/3/2002	11.90	295.9	8.05	10.52	97.1
C1	8/3/2002	14.80	251.2	8.15	9.79	96.2
C2	8/3/2002	16.17	257.0	7.64	8.76	88.5
D1	8/3/2002	16.01	230.5	8.05	9.39	94.6
D2	8/3/2002	17.09	245.1	7.59	8.69	89.5
E1	8/3/2002	14.37	303.6	7.62	9.03	87.7
E2	8/3/2002	12.55	301.0	7.85	9.48	89.3
F1	8/3/2002	16.72	293.7	7.83	8.65	88.5
F2	8/3/2002	16.89	298.8	7.80	8.23	84.6
G1	8/3/2002	16.98	287.6	7.93	8.66	89.0
H1	8/7/2002	5.61	241.9	7.35	10.21	81.3
I1	8/7/2002	6.31	278.6	7.84	11.61	94.4
J1	8/7/2002	5.94	265.8	7.83	11.72	94.2
K1	8/7/2002	6.26	304.7	7.73	11.62	94.3
L1	8/7/2002	6.75	283.6	7.91	11.02	90.5
M1	8/7/2002	5.84	275.7	7.70	11.78	94.5
N1	8/7/2002	6.63	254.2	7.90	11.74	96.2
O1	8/7/2002	6.79	231.6	7.63	11.10	91.2

Pt. Thomson Unit Sample Sites August 2002



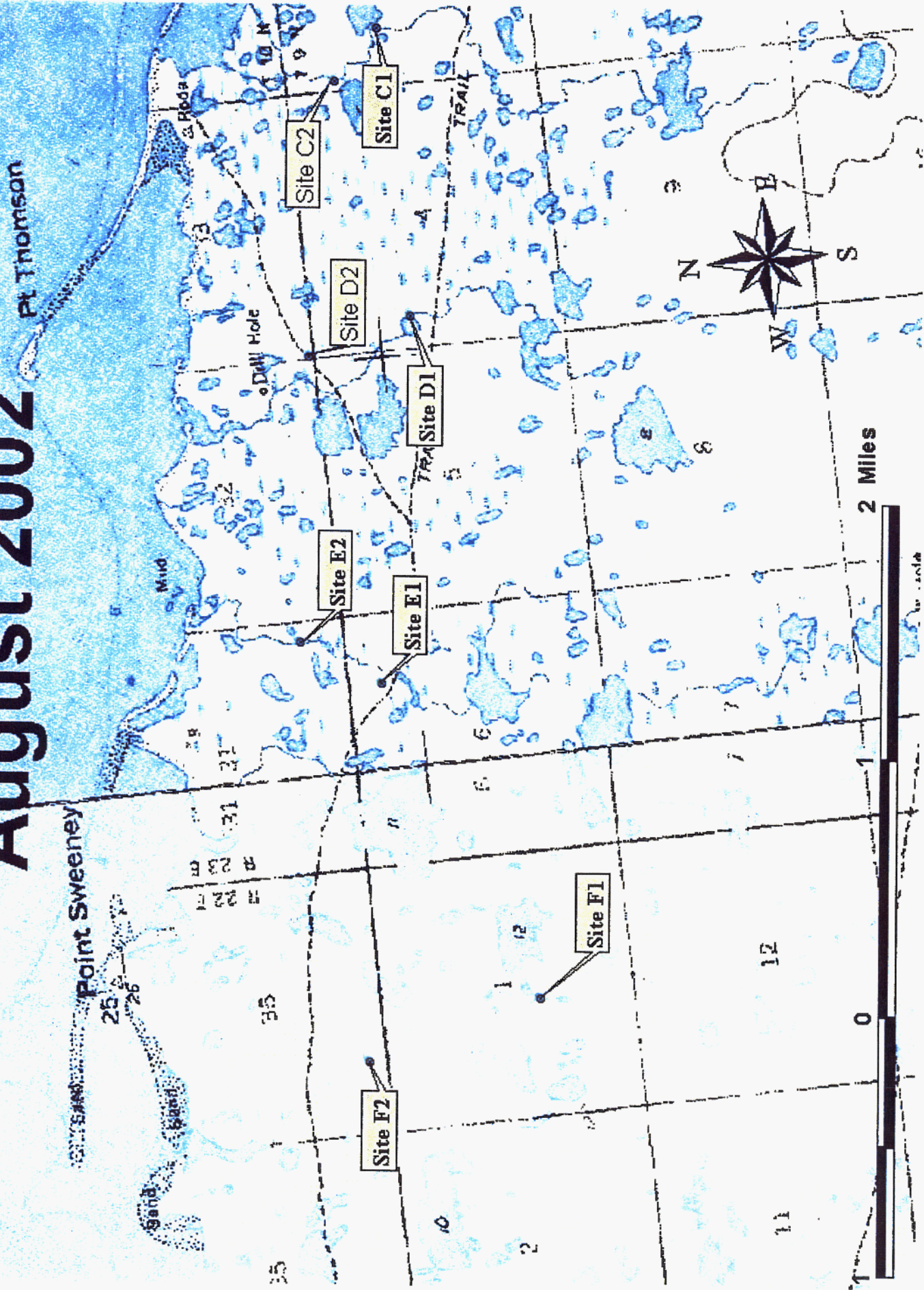
Pt. Thomson Unit Sample Sites

August 2002

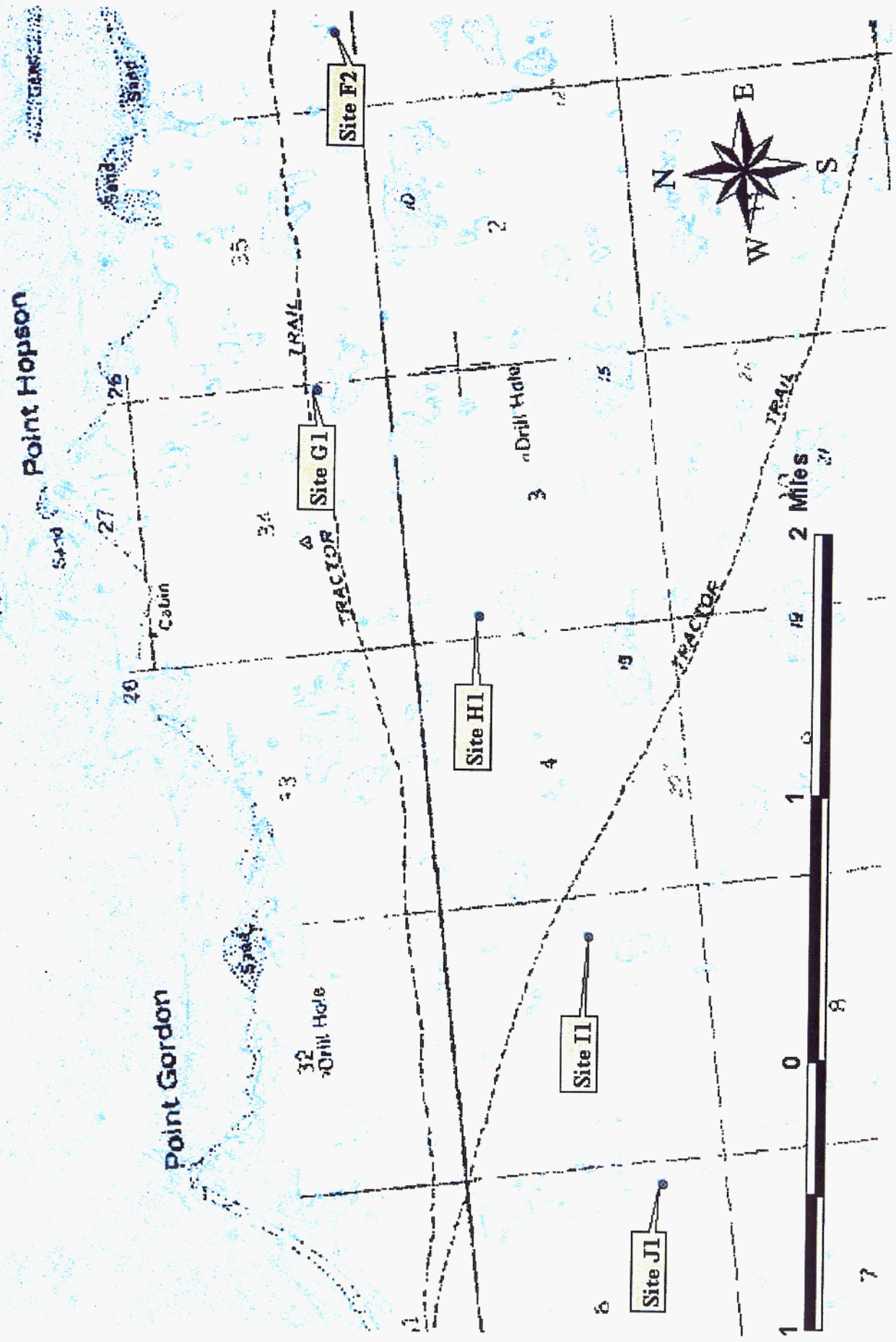


Pt. Thomson Unit Sample Sites

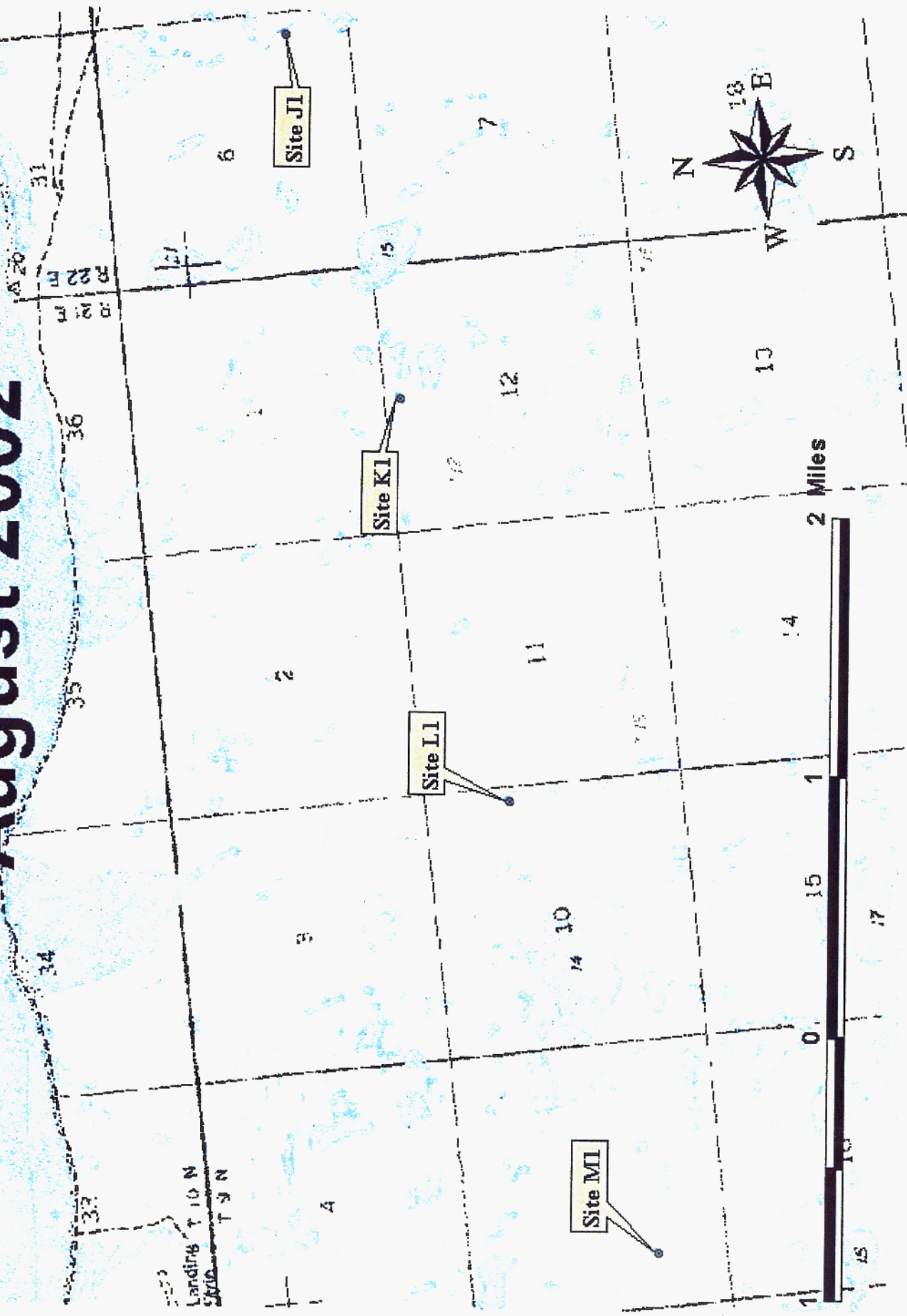
August 2002



Pt. Thomson Unit Sample Sites August 2002



Pt. Thomson Unit Sample Sites August 2002



Pt. Thomson Unit Sample Sites

August 2002

By boat
to Bullock

32
31
30
29
28
27
26
25
24
23
22
21
20
19
18
17
16
15
14
13
12
11
10
9
8
7
6
5
4
3
2
1
0
-1
-2
-3
-4
-5
-6
-7
-8
-9
-10
-11
-12
-13
-14
-15
-16
-17
-18
-19
-20
-21
-22
-23
-24
-25
-26
-27
-28
-29
-30
-31
-32

BAY

PT. THOMSON

R20T
R21T
R22T
R23T
R24T
R25T
R26T
R27T
R28T
R29T
R30T
R31T
R32T

Drill Hole

Site M1

Site N1

Site O1



2 Miles

