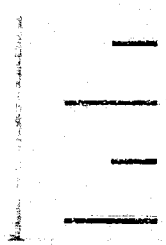


4
6
8
2
0
0



HARZA-EBASCO

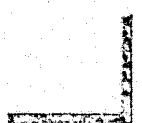
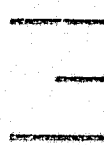
Susitna Joint Venture

Document Number

2864

Please Return To
DOCUMENT CONTROL

8.5



R&M

DCND: 2864

R&M CONSULTANTS, INC.
ENGINEERS GEOLOGISTS PLANNERS SURVEYORS

COMMUNICATION RECORD

| | | | |
|--------------------|--|---------------|--------------------------------|
| Project | <u>Smitna Hydro Navigation Studies</u> | Project No. | <u>442453</u> |
| Subject | <u>Navigation of Lower Smitna River</u> | Date | <u>8/14/85</u> |
| Call (to) (from) | | Telephone No. | |
| Discussion Between | <u>Bill Ashton</u> (Company) (R&M) | and | <u>Butch Hawley on 8/22/84</u> |

Bob Butera and myself boated the Smitna River from the Parks Highway boat launch to Cook Inlet on 8/22-23/84. We stopped at Smitna Station to buy gas. We asked Butch Hawley, the owner, about navigation routes and hazards of the lower Smitna River. We asked him about passage through Alexander Slough to Alexander Creek at low water. He said locals use the slough near the powerline to access the mouth of Alexander Creek because the slough is deeper and has sufficient water depth at low mainstem flows. Whereas at low mainstem flows Alexander Slough is dried up.