

MAPPED, EDITED, AND PUBLISHED BY THE GEOLOGICAL SURVEY

CONTROL BY NOS/NOAA AND USCE

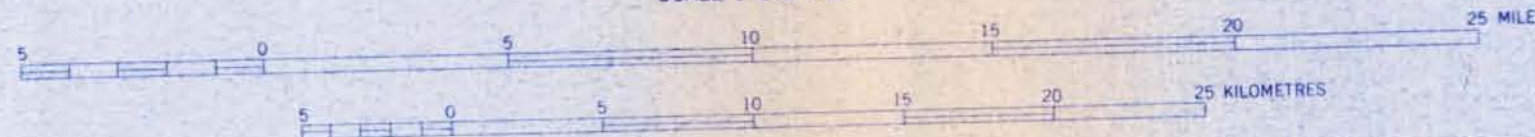
COMPILED IN 1956 FROM U.S. GEOLOGICAL SURVEY 1:63,360 SERIES  
MAPS SURVEYED 1952

UNIVERSAL TRANSVERSE MERCATOR PROJECTION, 1927 NORTH AMERICAN DATUM  
100,000 FOOT GRID BASED ON ALASKA COORDINATE SYSTEM, ZONE 6  
10,000 METRE UNIVERSAL TRANSVERSE MERCATOR GRID TICS  
ZONE 4, SHOWN IN BLUE

LAND LINES REPRESENT UNSURVEYED AND UNMARKED LOCATIONS  
PREDETERMINED BY THE BUREAU OF LAND MANAGEMENT  
FOLIOS K-11, K-12, K-17, AND K-18, KATEL RIVER MERIDIAN

SWAMPS AS PORTRAYED, INDICATE ONLY THE WETTER AREAS,  
USUALLY OF LOW RELIEF, AS INTERPRETED FROM AERIAL PHOTOGRAPHS

SCALE 1:250,000



CONTOUR INTERVAL 200 FEET  
NATIONAL GEODETIC VERTICAL DATUM OF 1929

1956 MAGNETIC DECLINATION AT SOUTH EDGE OF SHEET VARIES FROM 21°30' TO 23°30' EAST  
THIS MAP IS AVAILABLE IN BOTH SHADED RELIEF AND CONTOUR EDITIONS

FOR SALE BY U.S. GEOLOGICAL SURVEY  
FAIRBANKS, ALASKA 99701, DENVER, COLORADO 80225, OR RESTON, VIRGINIA 22092  
A FOLDER DESCRIBING TOPOGRAPHIC MAPS AND SYMBOLS IS AVAILABLE ON REQUEST



ROAD CLASSIFICATION  
LIGHT DUTY ..... UNIMPROVED DIRT .....

NULATO, ALASKA  
H6400-15600/60X180

1952  
MINOR REVISIONS 1974

*Yarborough 1981*  
*Cultural Resource*  
*Survey*