

IDITAROD (B-4) QUADRANGLE
ALASKA

1:63 360 SERIES (TOPOGRAPHIC)

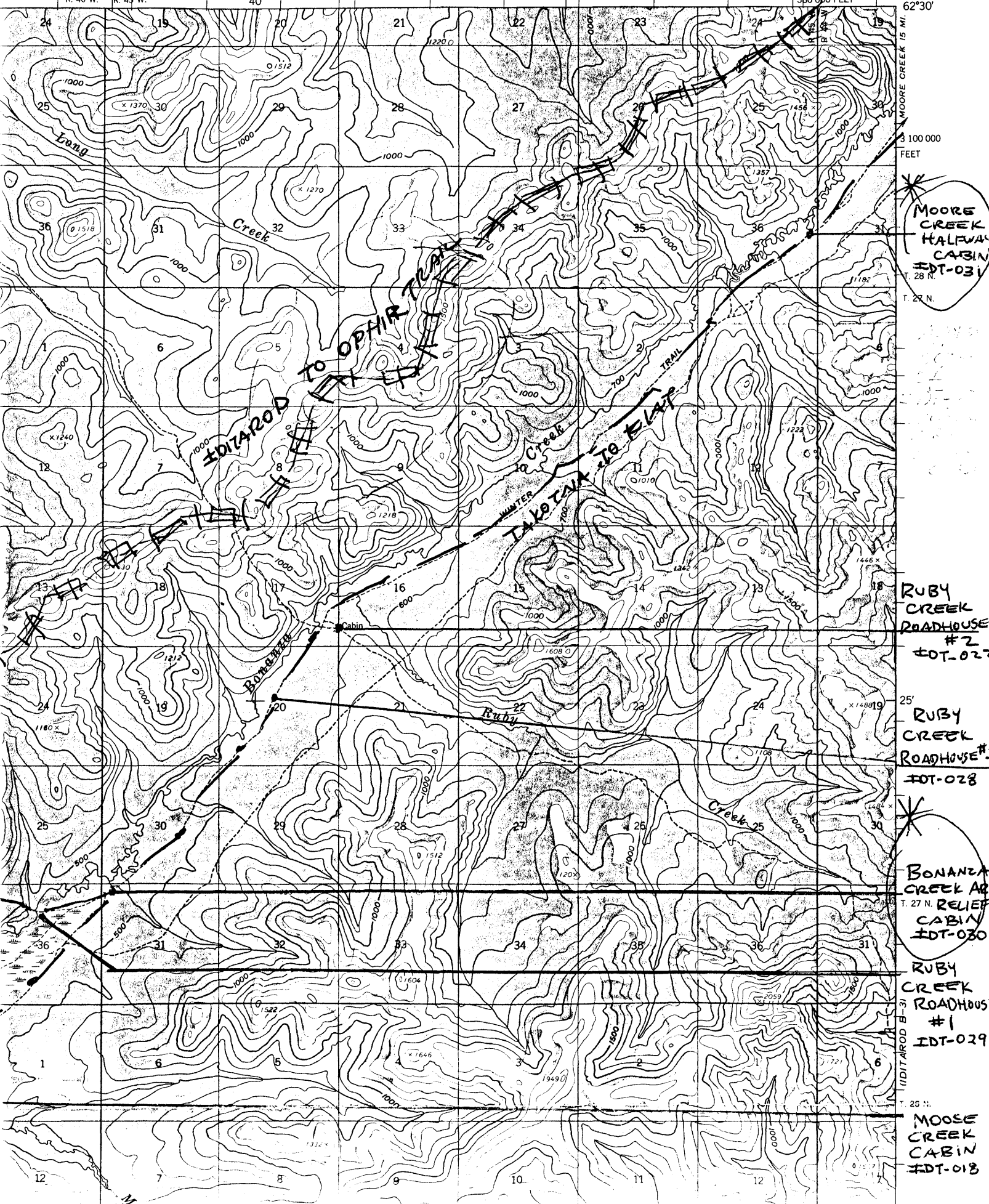
IDITAROD C-3

R. 46 W. R. 45 W.

40'

580 000 FEET

157°30' 62°30'



MOORE CREEK HALFWAY CABIN
IDT-031
T. 28 N.

RUBY CREEK ROADHOUSE #2
#2
#OT-022

RUBY CREEK ROADHOUSE #3
#3
#OT-028

BONANZA CREEK ARC RUBY CREEK RELIEF CABIN
IDT-030
T. 27 N.

RUBY CREEK ROADHOUSE #1
#1
IDT-029
IDITAROD B-3

MOOSE CREEK CABIN
IDT-018
T. 25 N.