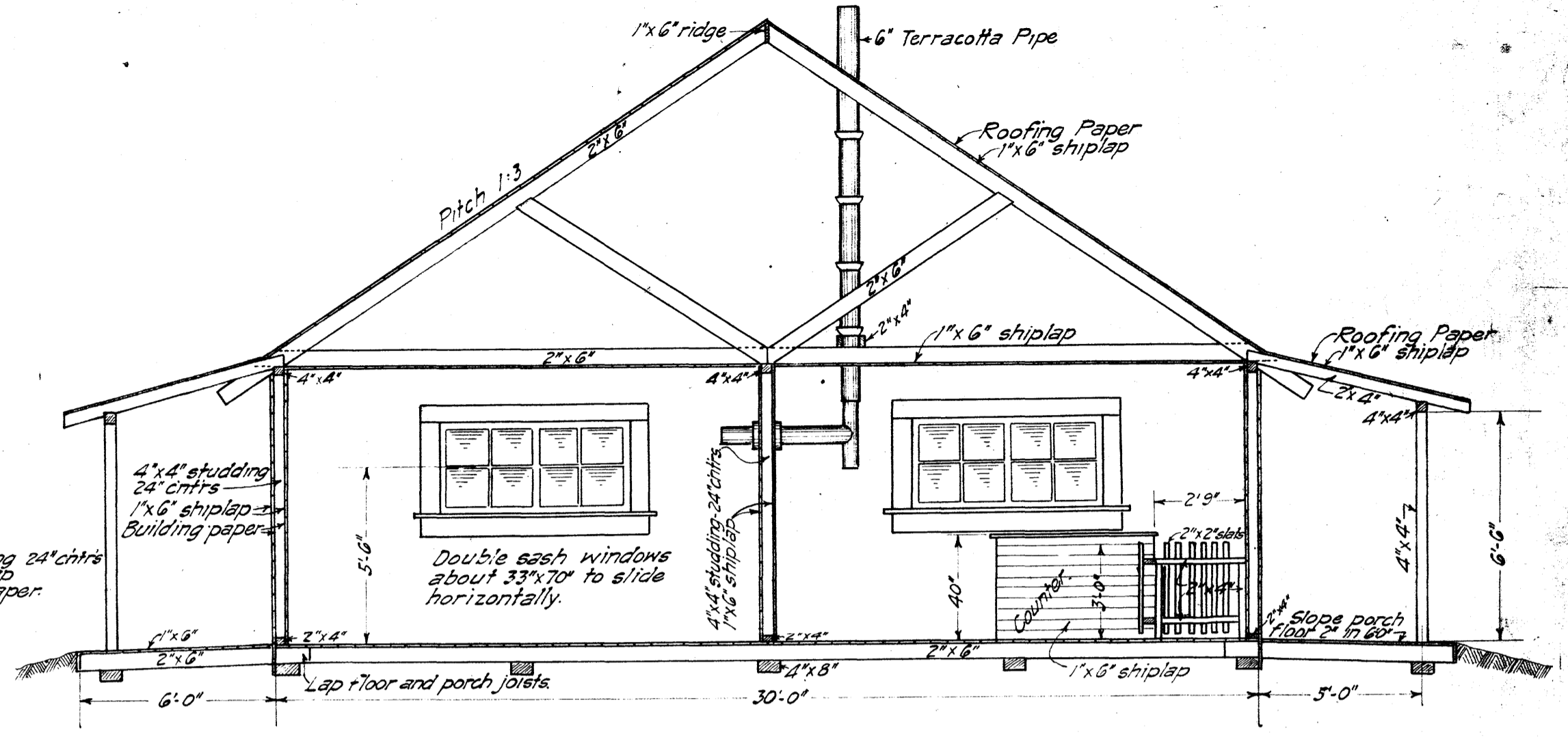
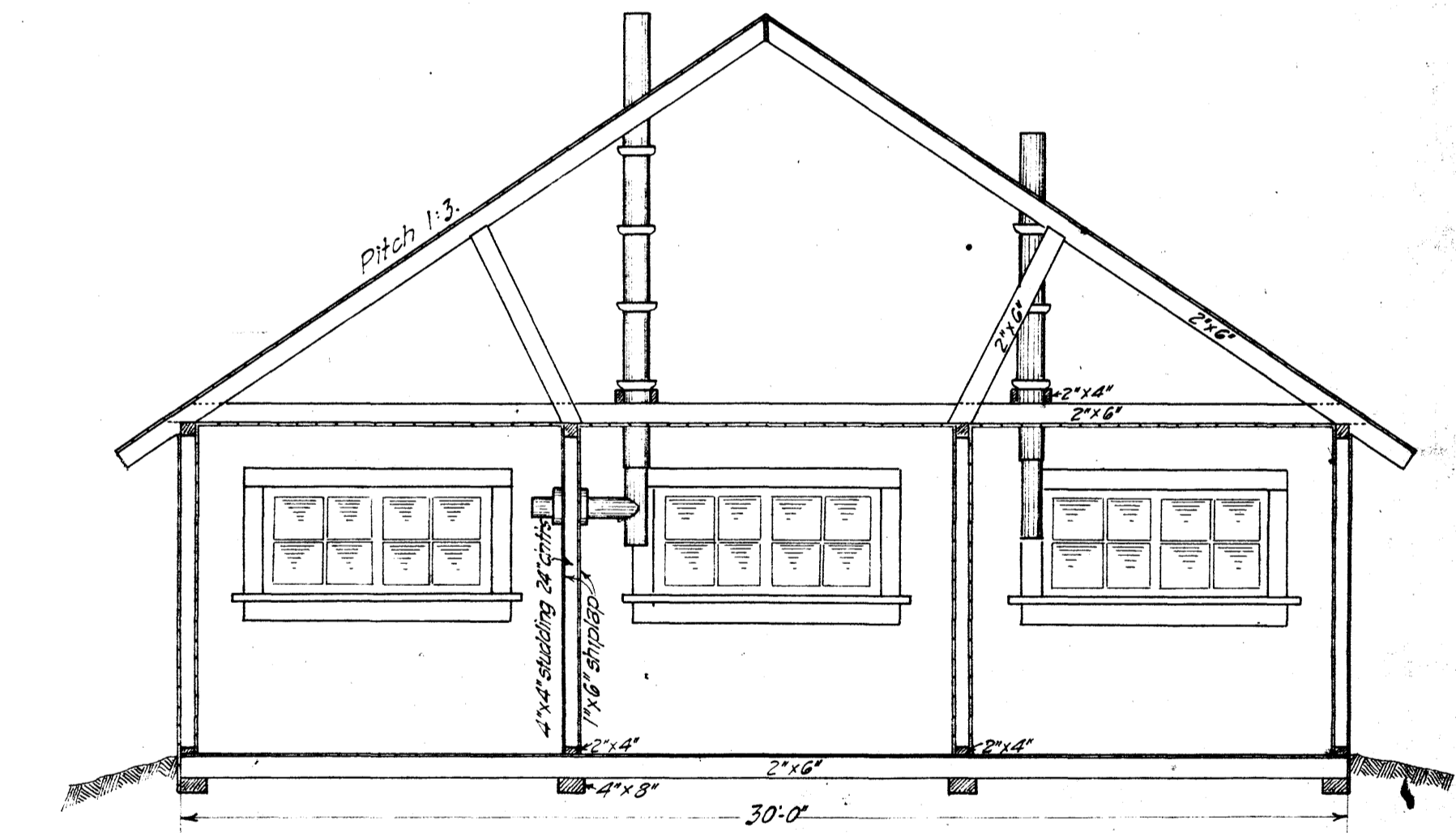


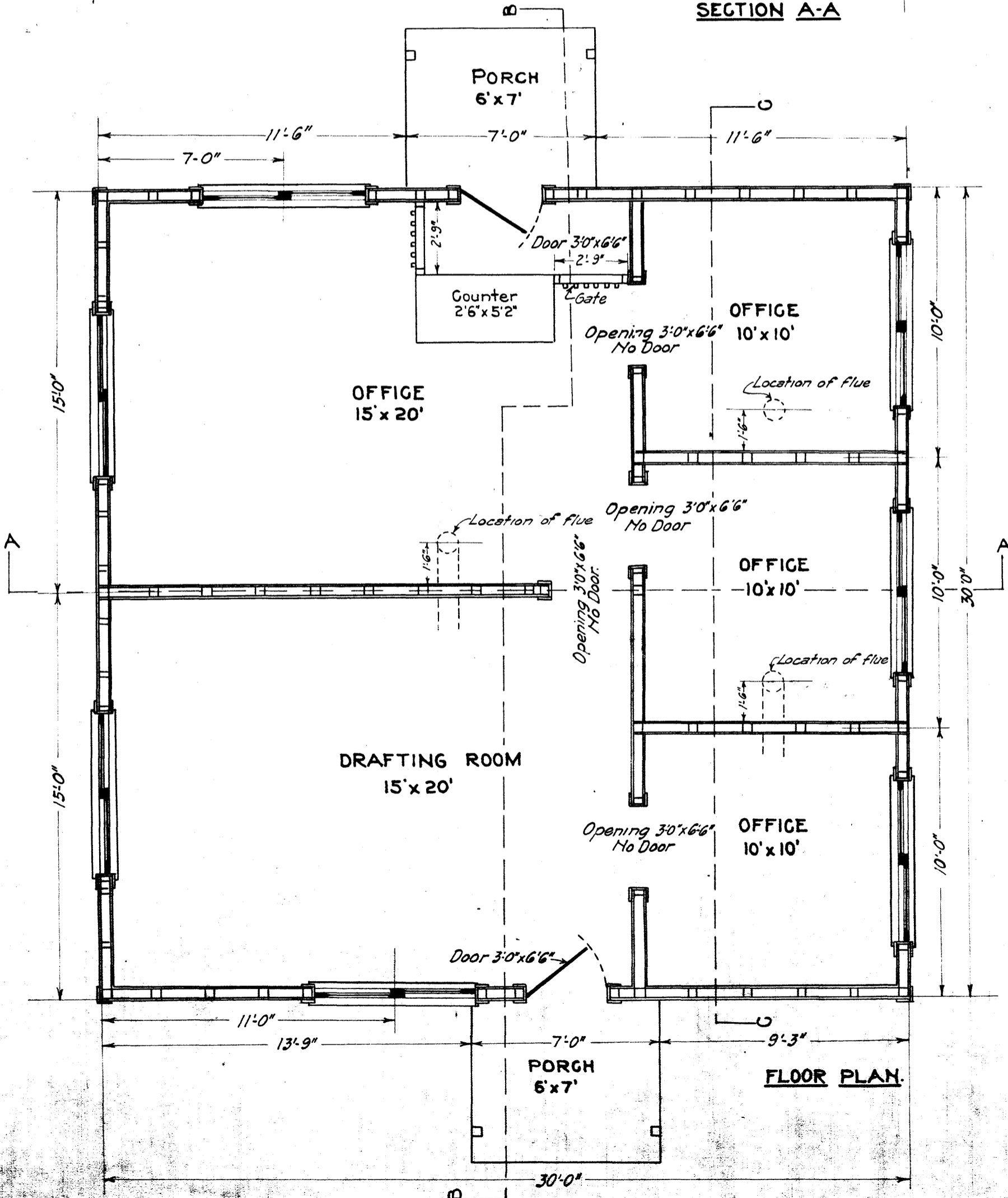
SECTION A-A



SECTION B-B



SECTION C-C



FLOOR PLAN

BILL OF MATERIAL									
No	Pcs	Size	F.B.M.	Remarks	No	Pcs	Size	F.B.M.	Remarks
2		4x8x30	160	Com. Rough	16		2x4x16	171	Com. Rough
3		4x8x22	176		9		2x4x14	84	
1		4x8x14	37		1		1x6x30	15	
2		4x8x12	64		13		1x6x14	91	
6		4x4x30	240		96		1x6x32	1536	Shiplap
1		4x4x26	35		348		1x6x30	5220	
28		4x4x16	597		125		1x6x20	1250	
1		4x4x14	19		16		1x6x14	112	
1		4x4x10	13		60	Lin. Ft.	2x4	40	5.25 & 2 E.
16		2x6x32	512		4		1x6x18	36	5.15 & 2 E.
16		2x6x30	480		3		1x6x12	18	
32		2x6x20	640		775	Lin. Ft.	1x6	388	
11		2x8x18	198		14		beams	33x35	
4		2x6x14	56						2 Doors 3'0" x 6'6" with hardware
5		2x6x12	60						16-2 Joints Terracotta pipe
6		2x4x30	120						160 Sq. Yds. Roofing Paper
1		2x4x20	13						500 Building
1		2x4x18	12						

DEPARTMENT OF THE INTERIOR
 ALASKAN ENGINEERING COMMISSION
 TURNAGAIN ARM DIST., ANCHORAGE, ALASKA

OFFICE FOR POTTER CREEK CAMP

F.A. HANSEN DIST. ENGR. AUG. 30, 1916
 SCALE 1/4" = 1'

Drawn by J.R.G.
 Traced by J.R.G.

FILE No. 2034