

Susitna-Watana Hydroelectric Project Document

ARLIS Uniform Cover Page

Title: Riparian vegetation study downstream of the proposed Susitna-Watana Dam (11.6) : Initial study report. Figures		SuWa 207
Author(s) – Personal:		
Author(s) – Corporate: Prepared by ABR, Inc.-Environmental Research & Services		
AEA-identified category, if specified: Draft initial study report		
AEA-identified series, if specified:		
Series (ARLIS-assigned report number): Susitna-Watana Hydroelectric Project document number 207		Existing numbers on document:
Published by: [Anchorage : Alaska Energy Authority, 2014]		Date published: February 2014
Published for: Alaska Energy Authority		Date or date range of report:
Volume and/or Part numbers: Study plan Section 11.6		Final or Draft status, as indicated: Draft
Document type:		Pagination: pages 54-66
Related work(s):		Pages added/changed by ARLIS:
Notes: The following parts of Section 11.6 appear in separate files: Main report ; Figures.		

All reports in the Susitna-Watana Hydroelectric Project Document series include an ARLIS-produced cover page and an ARLIS-assigned number for uniformity and citability. All reports are posted online at <http://www.arlis.org/resources/susitna-watana/>



FIGURES

**Susitna-Watana Hydroelectric Project
(FERC No. 14241)**

**Riparian Vegetation Study Downstream of the
Proposed Susitna-Watana Dam (11.6)**

Figures

Initial Study Report

Prepared for

Alaska Energy Authority



SUSITNA-WATANA HYDRO

Clean, reliable energy for the next 100 years.

Prepared by

ABR, Inc.—Environmental Research & Services

February 2014 Draft

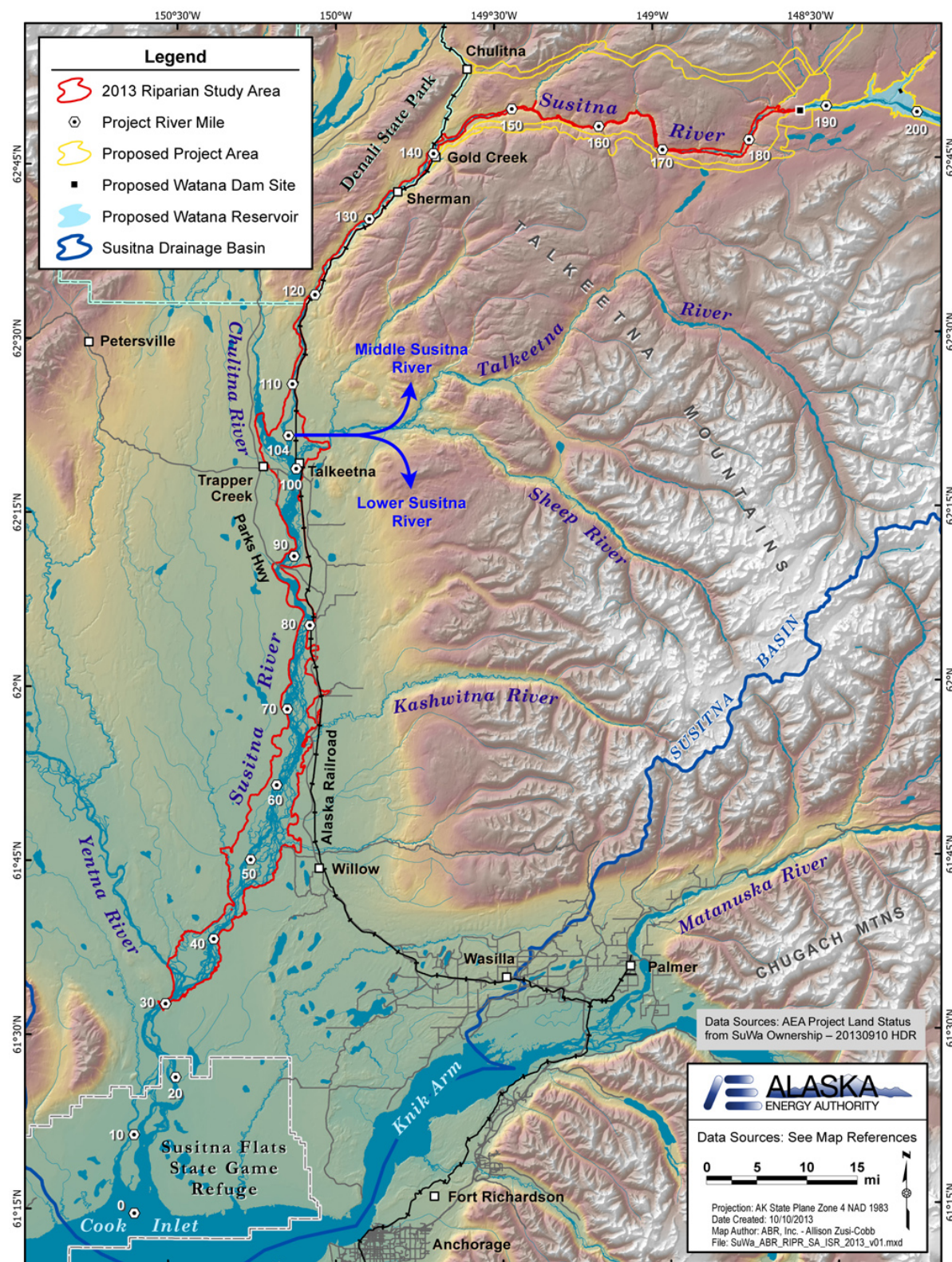


Figure 3-1. Study Area for the Riparian Vegetation Study, Susitna-Watana Hydroelectric Project, 2013.

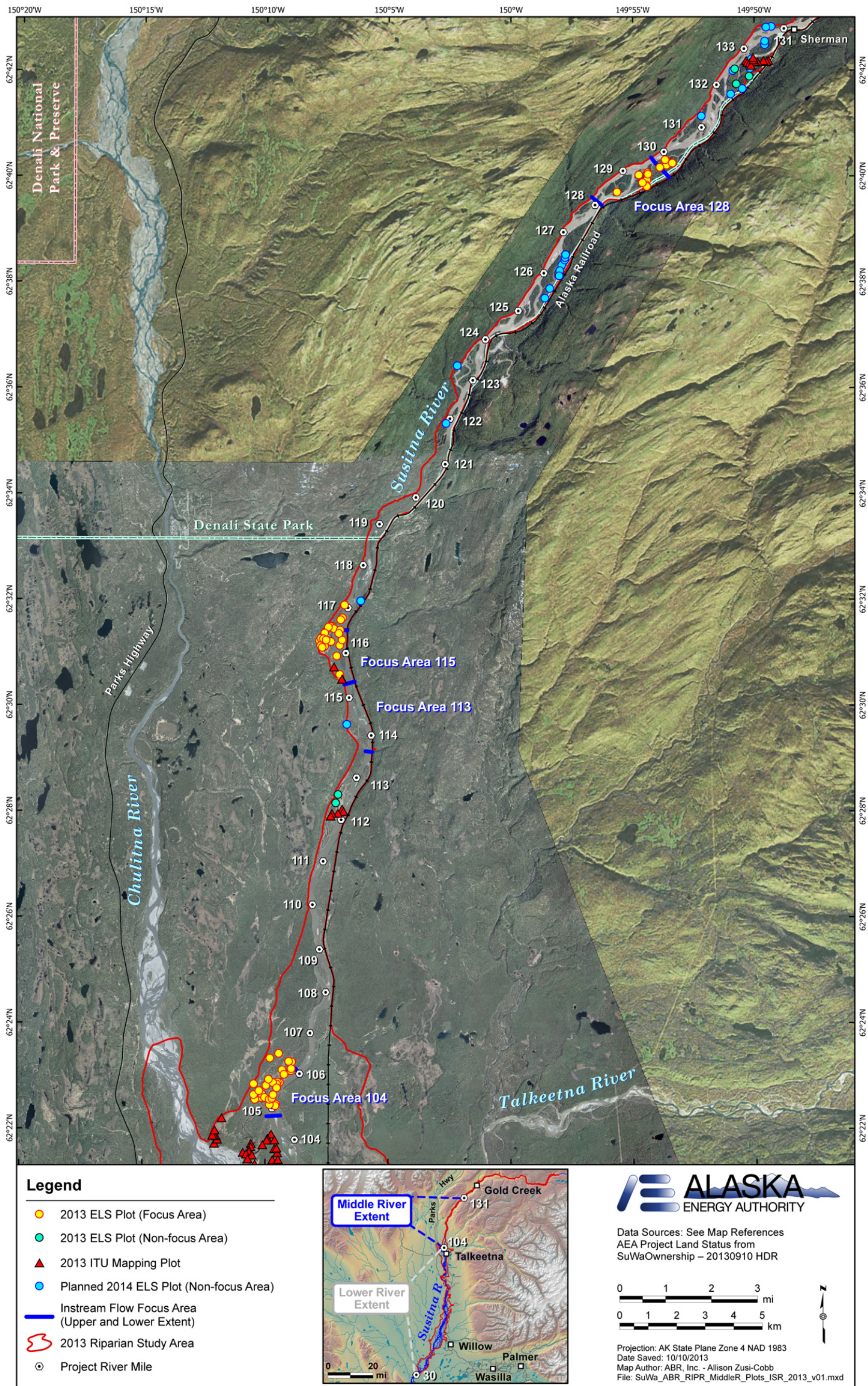


Figure 4.2-1. Middle Susitna River ELS and ITU Mapping Plot Locations, Riparian Vegetation Study, Susitna-Watana Hydroelectric Project, 2013.

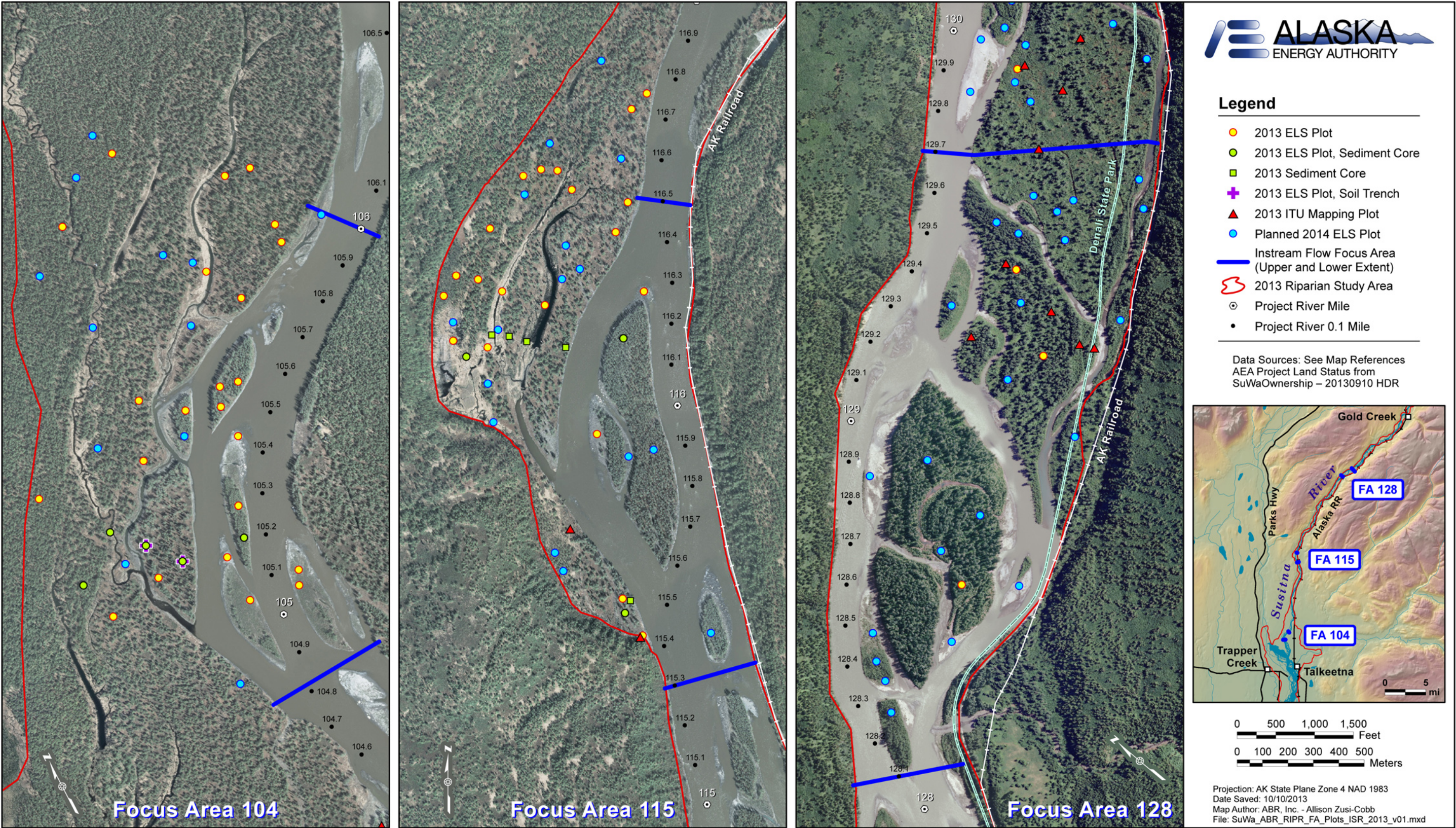


Figure 4.2-2. ELS and ITU Mapping Plot Locations in Focus Areas 104 (Whiskers Slough), 115 (Slough 6A), and 128 (Slough 8A), including Sediment Core and Trench Locations, Riparian Vegetation Study, Susitna-Watana Hydroelectric Project, 2013.

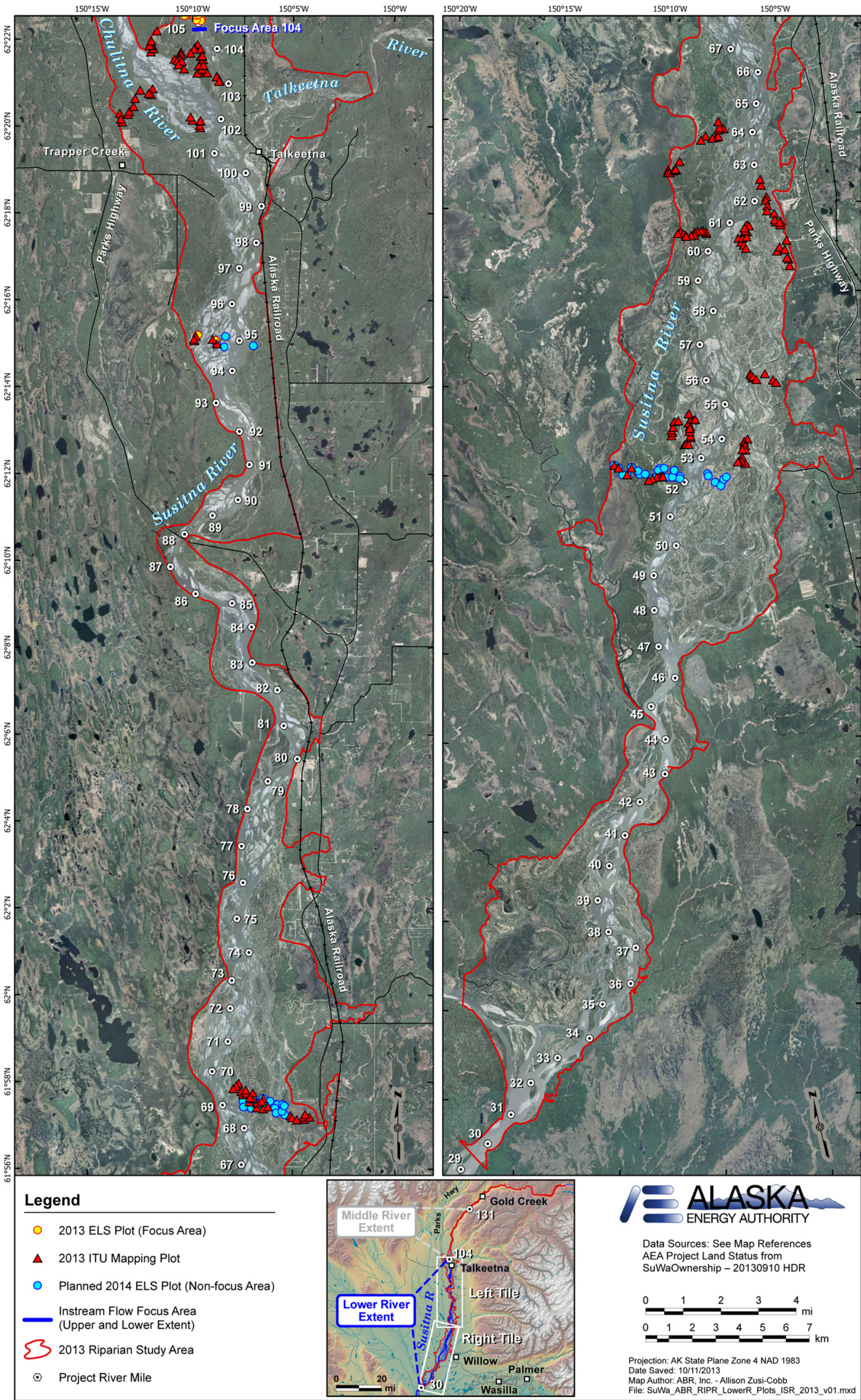


Figure 4.2-3. ELS and ITU Mapping Plot Locations in the Lower Susitna River, Riparian Vegetation Study, Susitna-Watana Hydroelectric Project, 2013.

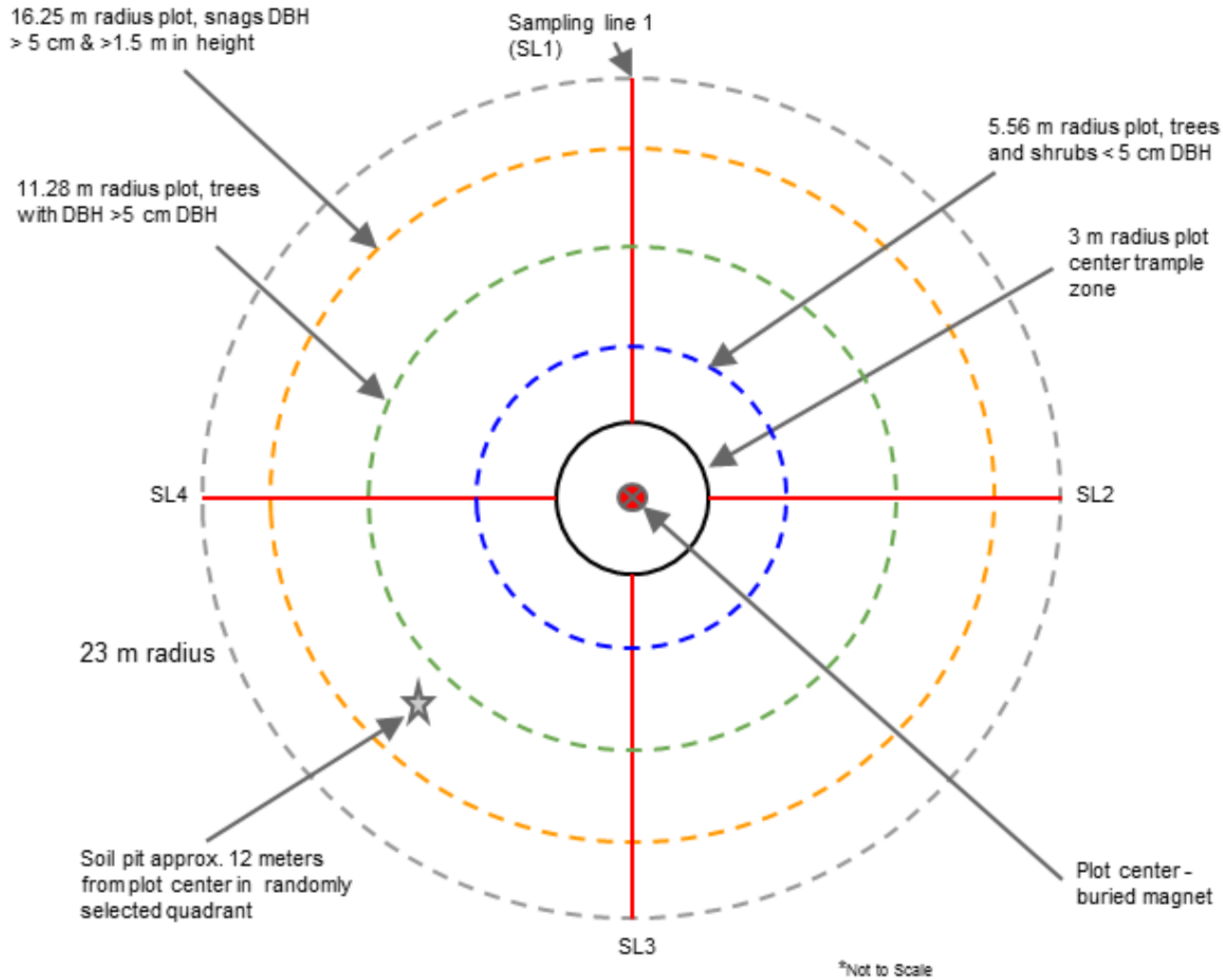


Figure 4.2-4. ELS Plot Layout, Riparian Vegetation Study, Susitna-Watana Hydroelectric Project, 2013.

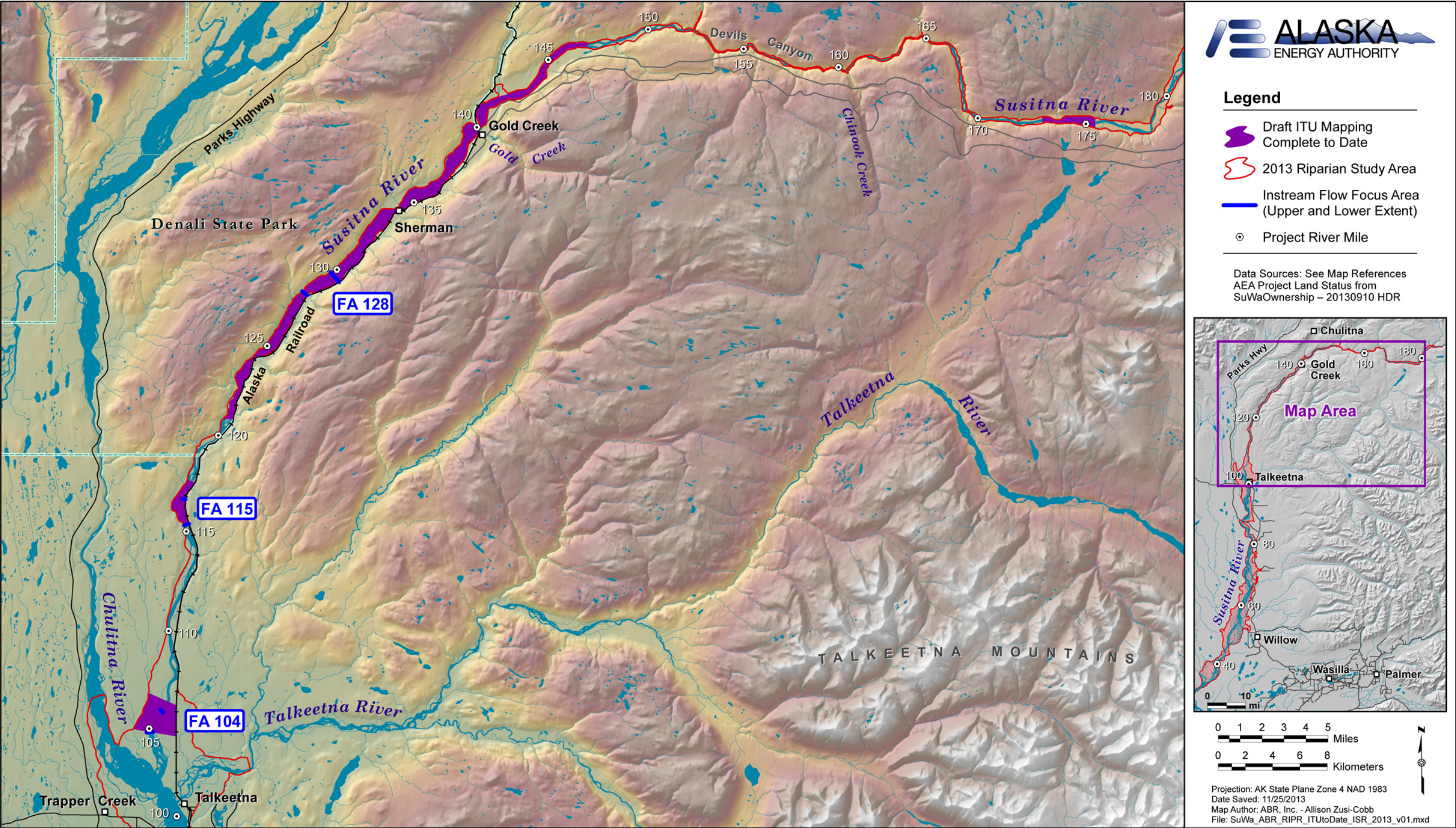


Figure 4.3-1. Integrated Terrain Unit (ITU) Mapping Completed as of Q4 2013, Riparian Vegetation Study, Susitna-Watana Hydroelectric Project, 2013.

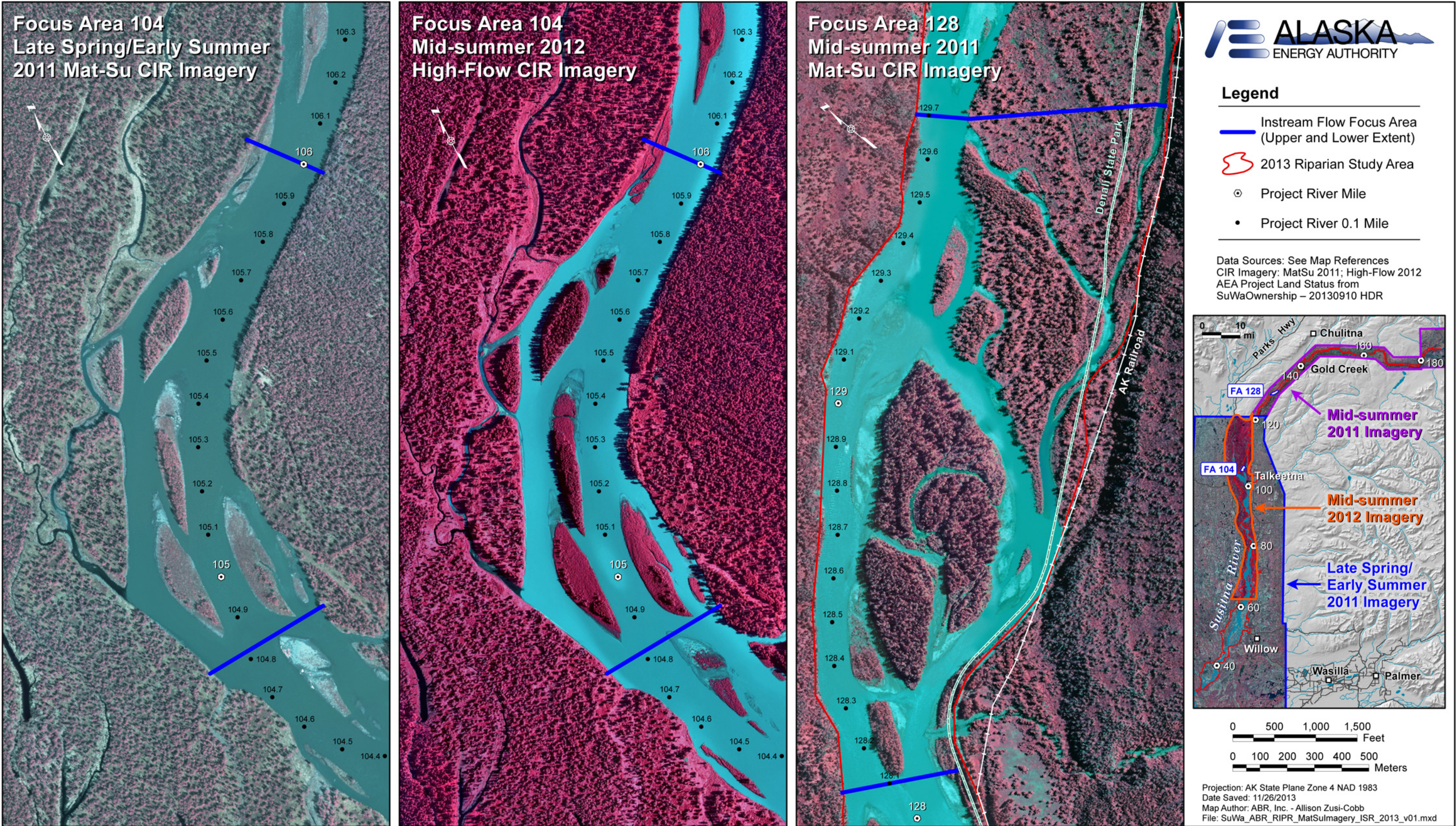


Figure 4.3-2. Comparison of Two Types of Aerial Imagery Across Three Time Periods, Including Late Spring/Early Summer 2011, Mid-Summer 2011, and Mid-Summer 2012 at Focus Areas 104 (Whiskers Slough) and 128 (Slough 6A), Middle Susitna River, Riparian Vegetation Study, Susitna-Watana Hydroelectric Project, 2013.

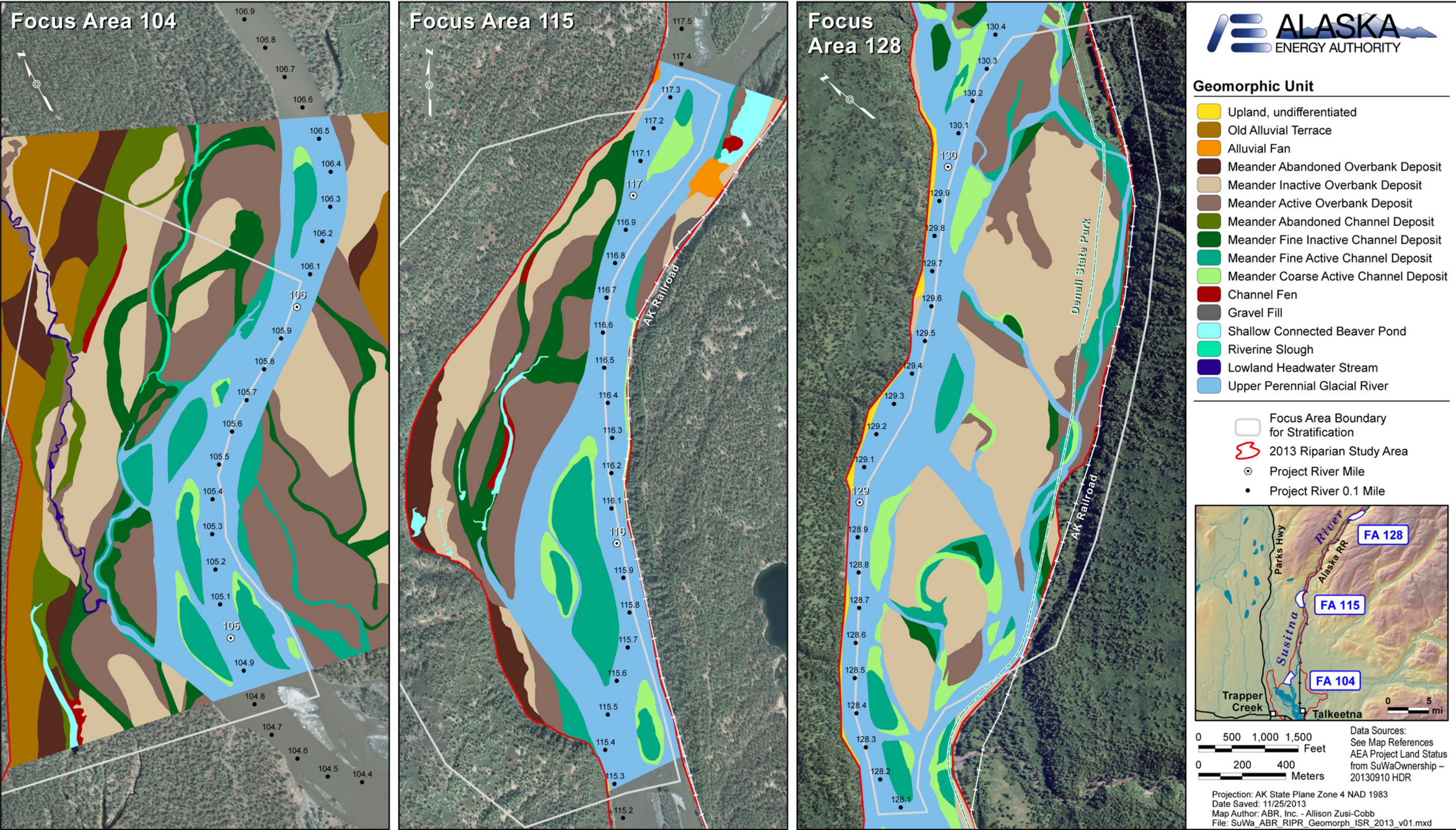


Figure 5-1. Maps of Geomorphic Units in Focus Areas 104 (Whiskers Slough), 115 (Slough 6A), and 128 (Slough 8A), Middle Susitna River, Riparian Vegetation Study, Susitna-Watana Hydroelectric Project, 2013.

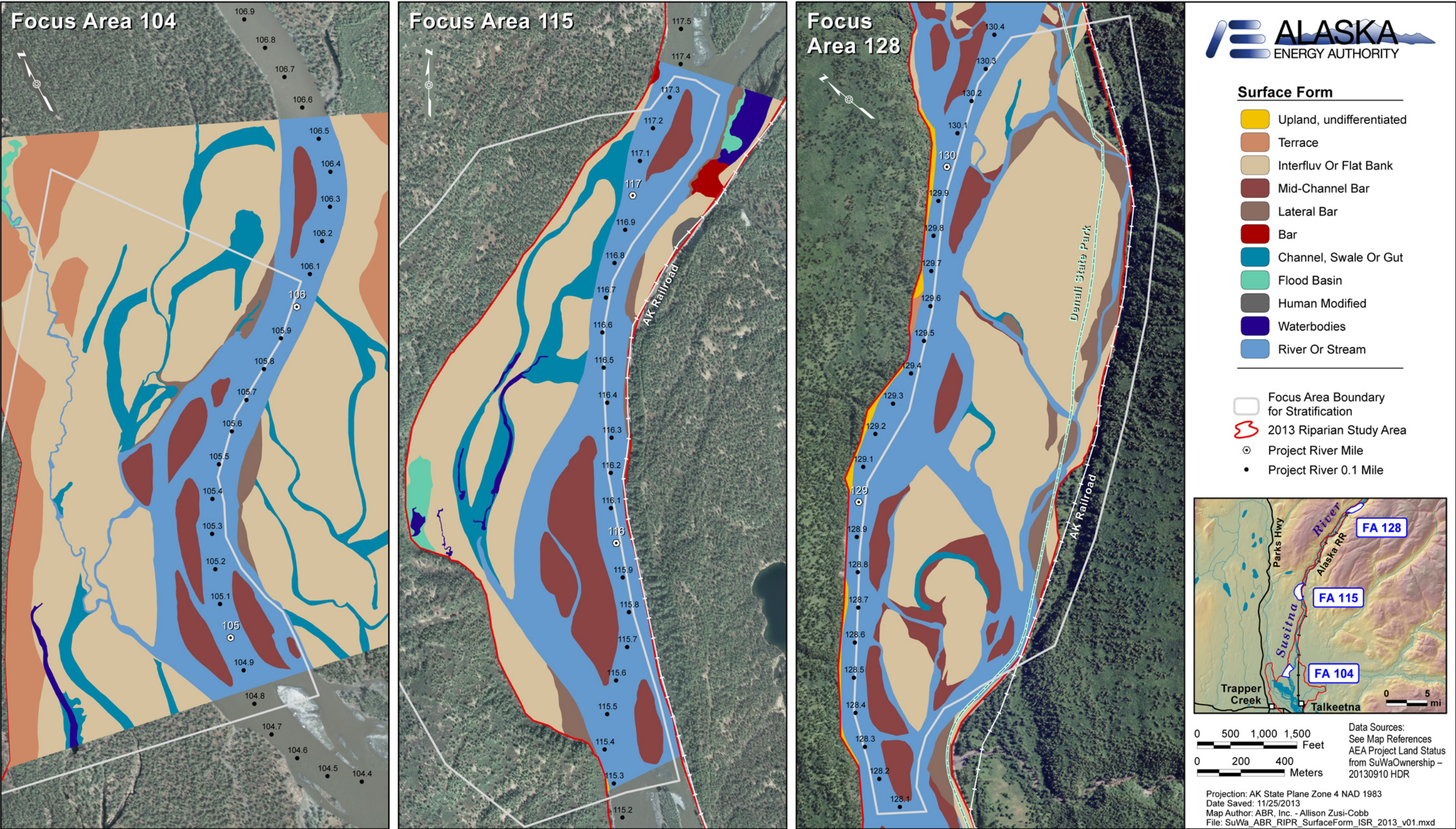


Figure 5-2. Maps of Surface Forms in Focus Areas 104 (Whiskers Slough), 115 (Slough 6A), and 128 (Slough 8A), Middle Susitna River, Riparian Vegetation Study, Susitna-Watana Hydroelectric Project, 2013.

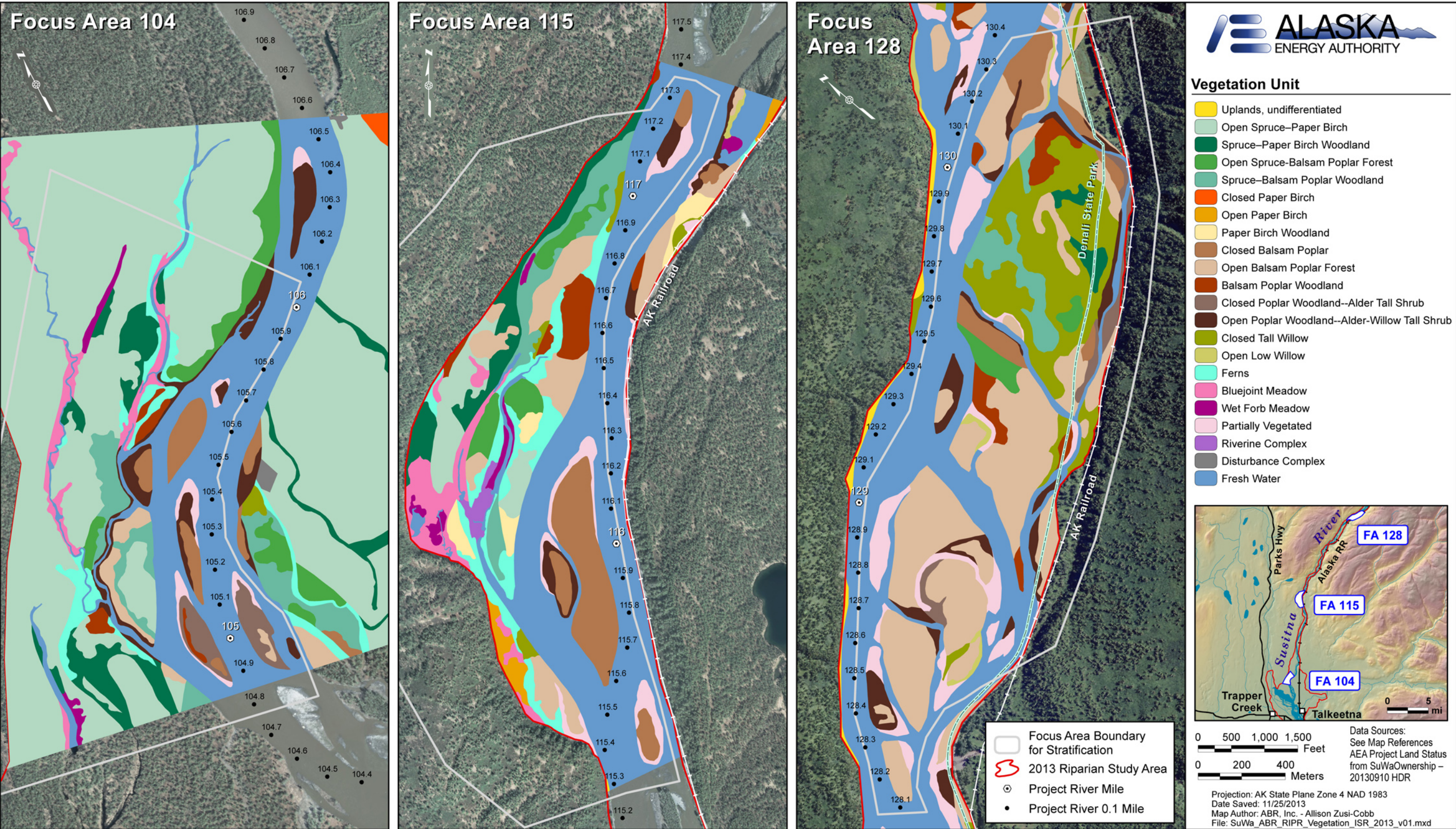


Figure 5-3. Maps of Vegetation Classes in Focus Areas 104 (Whiskers Slough), 115 (Slough 6A), and 128 (Slough 8A), Middle Susitna River, Riparian Vegetation Study, Susitna-Watana Hydroelectric Project, 2013.

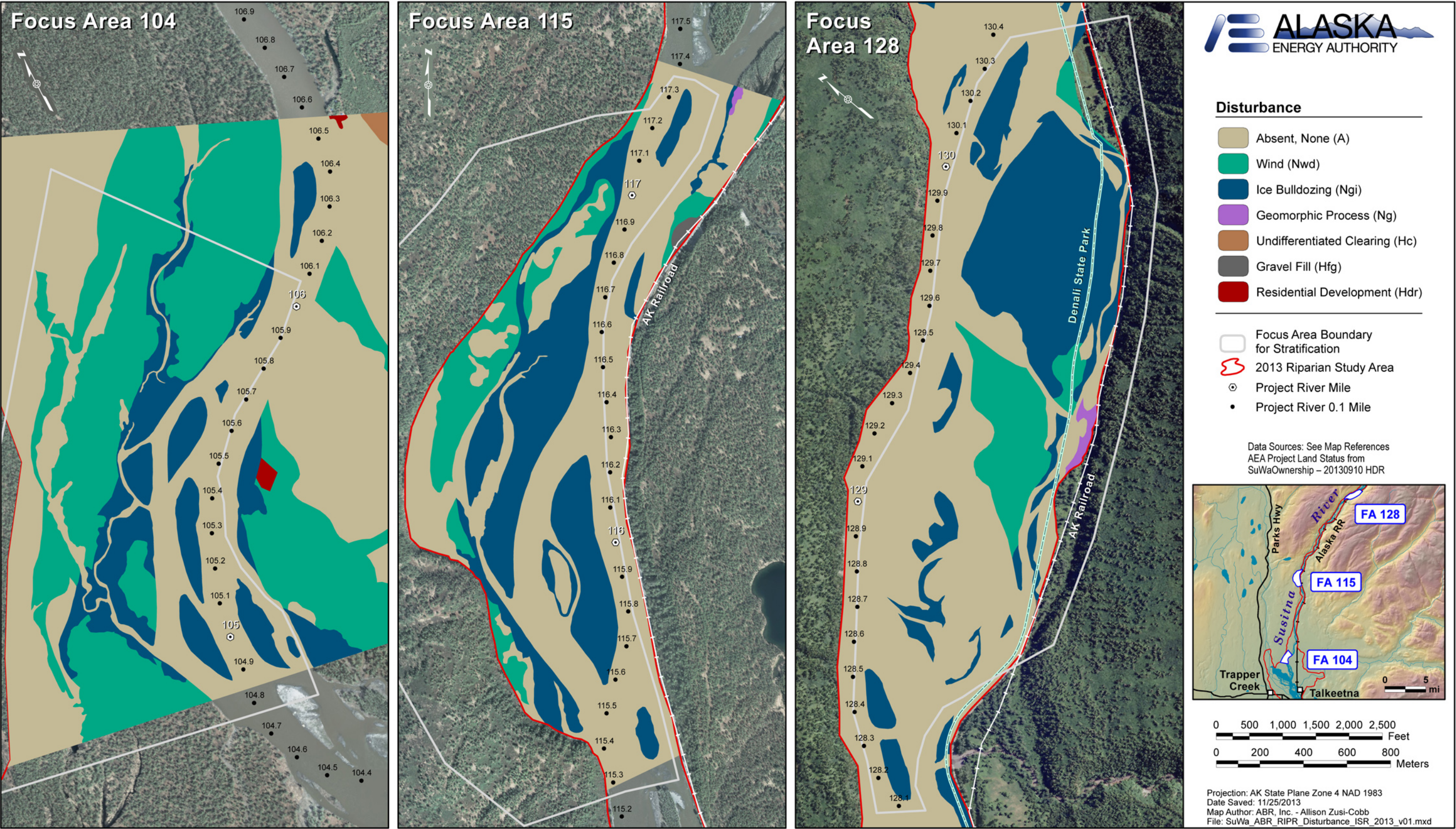


Figure 5-4. Maps of Disturbance in Focus Areas 104 (Whiskers Slough), 115 (Slough 6A), and 128 (Slough 8A), Middle Susitna River, Riparian Vegetation Study, Susitna-Watana Hydroelectric Project, 2013.

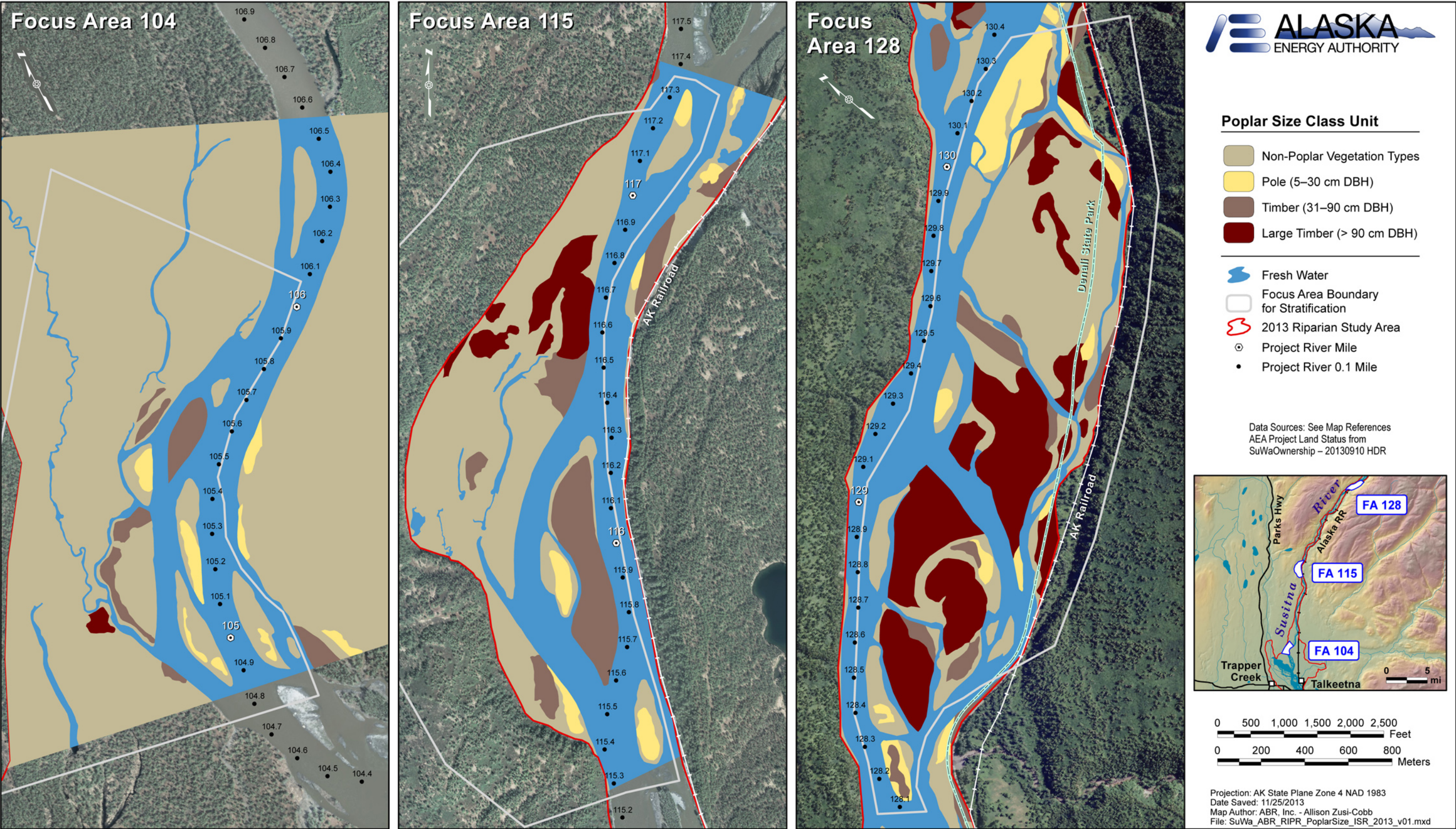


Figure 5-5. Maps of Poplar Size Classes in Focus Areas 104 (Whiskers Slough), 115 (Slough 6A), and 128 (Slough 6A), Middle Susitna River, Riparian Vegetation Study, Susitna-Watana Hydroelectric Project, 2013.

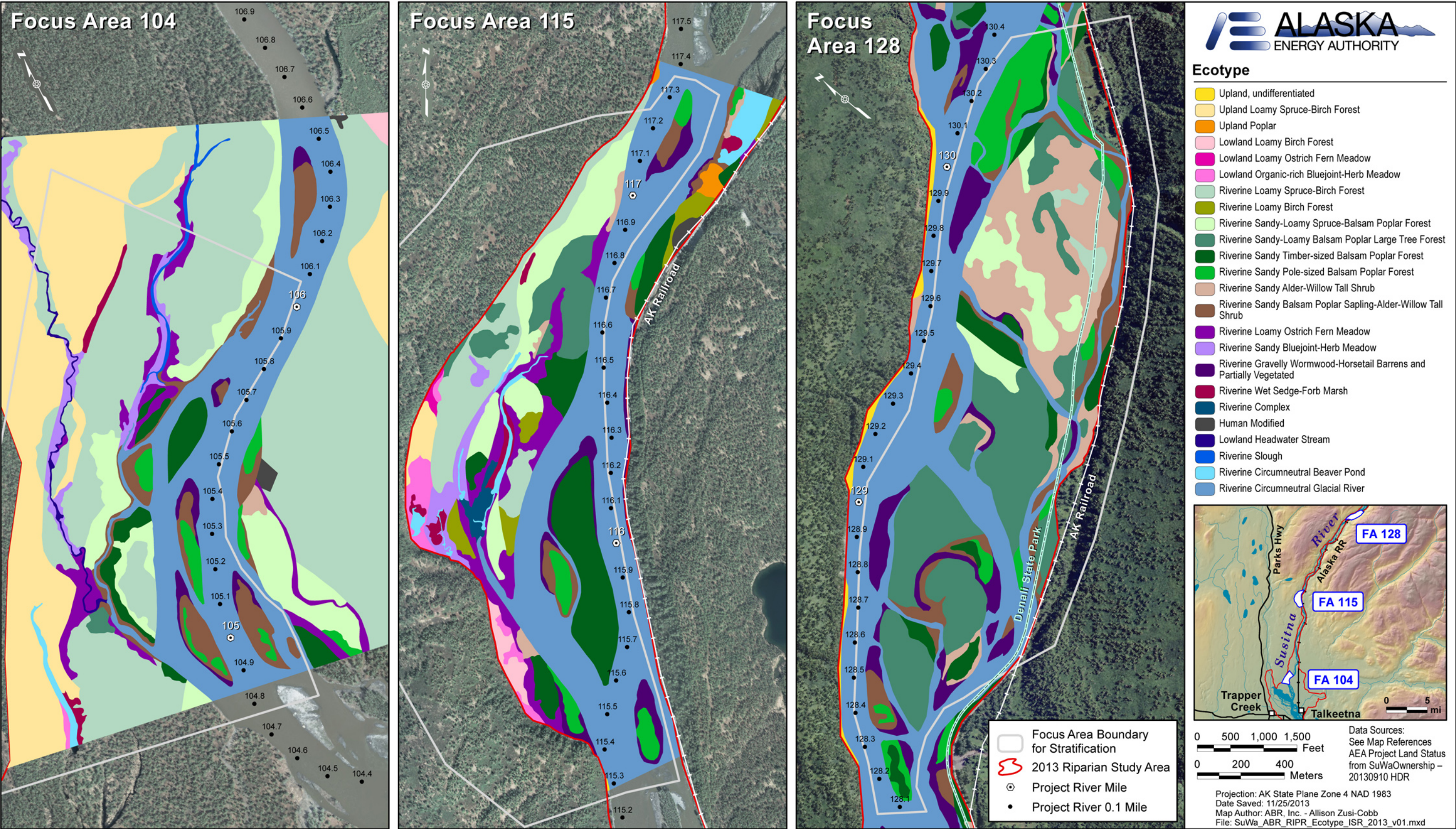


Figure 5-6. Maps of Preliminary Ecotype Classes in Focus Areas 104 (Whiskers Slough), 115 (Slough 6A), and 128 (Slough 8A), Middle Susitna River, Riparian Vegetation Study, Susitna-Watana Hydroelectric Project, 2013.