

Susitna-Watana Hydroelectric Project Document

ARLIS Uniform Cover Page

Title: Study of fish distribution and abundance in the middle and lower Susitna River study, Study plan Section 9.6 : Initial study report -- Part A, Appendix A: Sampling site maps		SuWa 223
Author(s) – Personal:		
Author(s) – Corporate: R2 Resource Consultants Inc., LGL Alaska Research Associates, Inc., Golder Associates Inc. & HDR, Inc.		
AEA-identified category, if specified: Initial study report		
AEA-identified series, if specified:		
Series (ARLIS-assigned report number): Susitna-Watana Hydroelectric Project document number 223		Existing numbers on document:
Published by: [Anchorage : Alaska Energy Authority, 2014]		Date published: June 2014
Published for: Alaska Energy Authority		Date or date range of report:
Volume and/or Part numbers:		Final or Draft status, as indicated:
Document type: Atlas		Pagination: i, 16 p.
Related work(s): The following parts of Section 9.6 appear in separate files: Part A ; Appendix A ; Appendix B ; Appendix C ; Appendices D-F ; Part B ; Part C.		Pages added/changed by ARLIS:
Notes:		

All reports in the Susitna-Watana Hydroelectric Project Document series include an ARLIS-produced cover page and an ARLIS-assigned number for uniformity and citability. All reports are posted online at <http://www.arlis.org/resources/susitna-watana/>



PART A - APPENDIX A: SAMPLING SITE MAPS

Susitna-Watana Hydroelectric Project (FERC No. 14241)

Study of Fish Distribution and Abundance in the Middle and Lower Susitna River Study (9.6)

Part A - Appendix A Sampling Site Maps

Initial Study Report

Prepared for

Alaska Energy Authority



SUSITNA-WATANA HYDRO

Clean, reliable energy for the next 100 years.

Prepared by

R2 Resource Consultants Inc.

LGL Alaska Research Associates, Inc.

Golder Associates Inc. &

HDR, Inc.]

June 2014

LIST OF FIGURES

Figure A1. GRTS sites sampled in Geomorphic Reach MR-1 including focus area FA-184 (Watana Dam), 2013.....	1
Figure A2. GRTS sites sampled in Geomorphic Reach MR-2 including FA-173 (Stephan Lake Complex), 2013.....	2
Figure A3. GRTS sites sampled by habitat type for Geomorphic Reach MR-5 including FA-151 (Portage Creek), 2013.....	3
Figure A4. GRTS sites sampled by habitat type for Geomorphic Reach MR-6 including FA 144 (Slough 21), FA-141 (Indian River), FA-138 (Gold Creek), and FA-128 (Slough 8A), 2013.....	4
Figure A5. GRTS sites sampled by habitat type for Geomorphic Reach MR-7 including FA-115 (Slough 6A) and FA-113 (Oxbow I), 2013.....	5
Figure A6. GRTS sites sampled in Geomorphic Reach MR-8 including FA-104 (Whiskers Slough), 2013.....	6
Figure A7. Sites sampled along Lower River transect PRM 100.3, 2013.....	7
Figure A8. Sites sampled along Lower River transect PRM 92.9, 2013.....	8
Figure A9. Sites sampled along Lower River transect PRM 85.6, 2013.....	9
Figure A10. Sites sampled along Lower River transect PRM 78.2, 2013.....	10
Figure A11. Sites sampled along Lower River transect PRM 70.8, 2013.....	11
Figure A12. Sites sampled along Lower River transect PRM 63.5, 2013.....	12
Figure A13. Sites sampled along Lower River transect PRM 56.1, 2013.....	13
Figure A14. Sites sampled along Lower River transect PRM 48.8, 2013.....	14
Figure A15. Sites sampled along Lower River transect PRM 41.4, 2013.....	15
Figure A16. Sites sampled along Lower River transect PRM 34, 2013.....	16

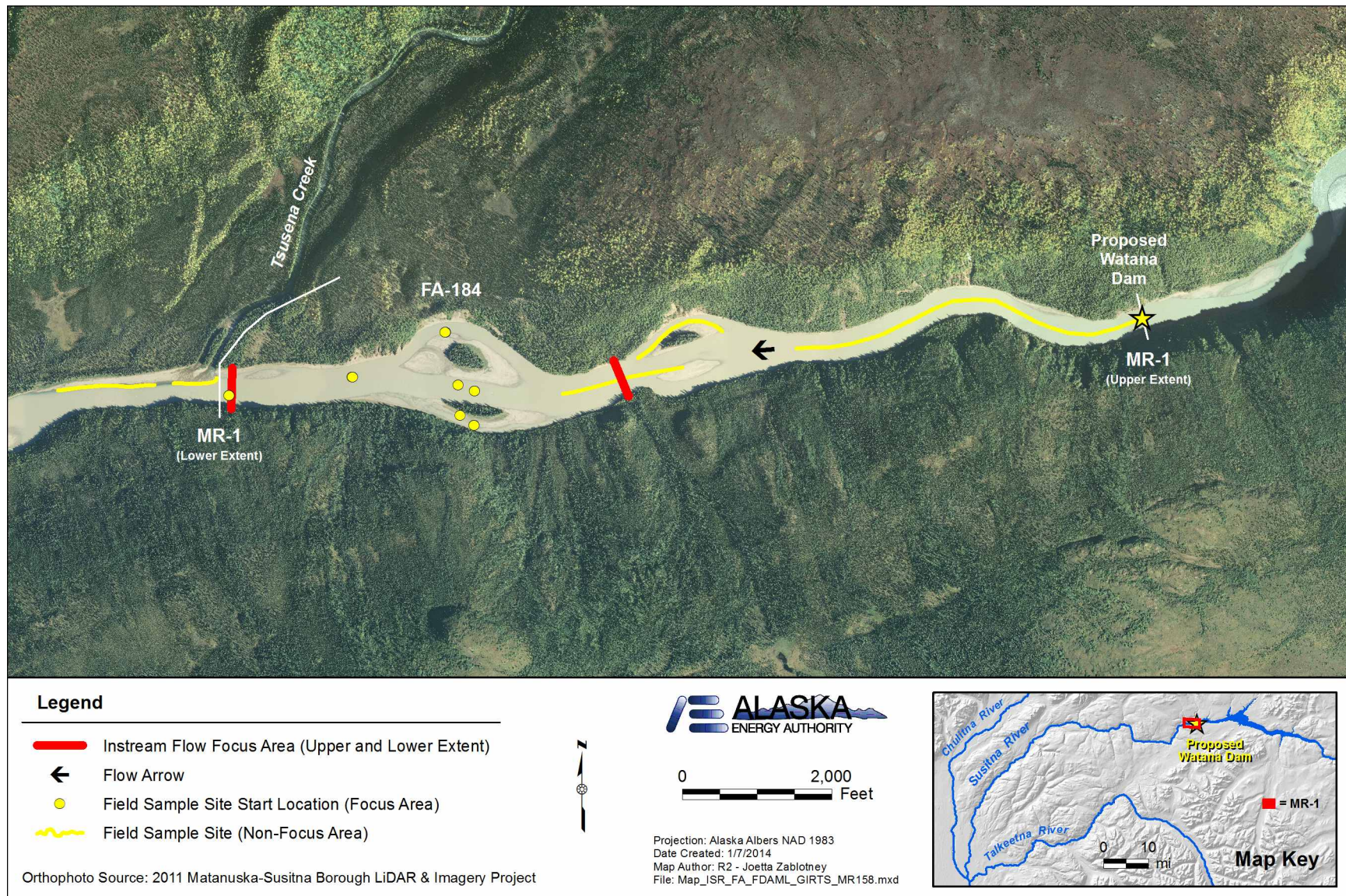


Figure A1. GRTS sites sampled in Geomorphic Reach MR-1 including focus area FA-184 (Watana Dam), 2013.

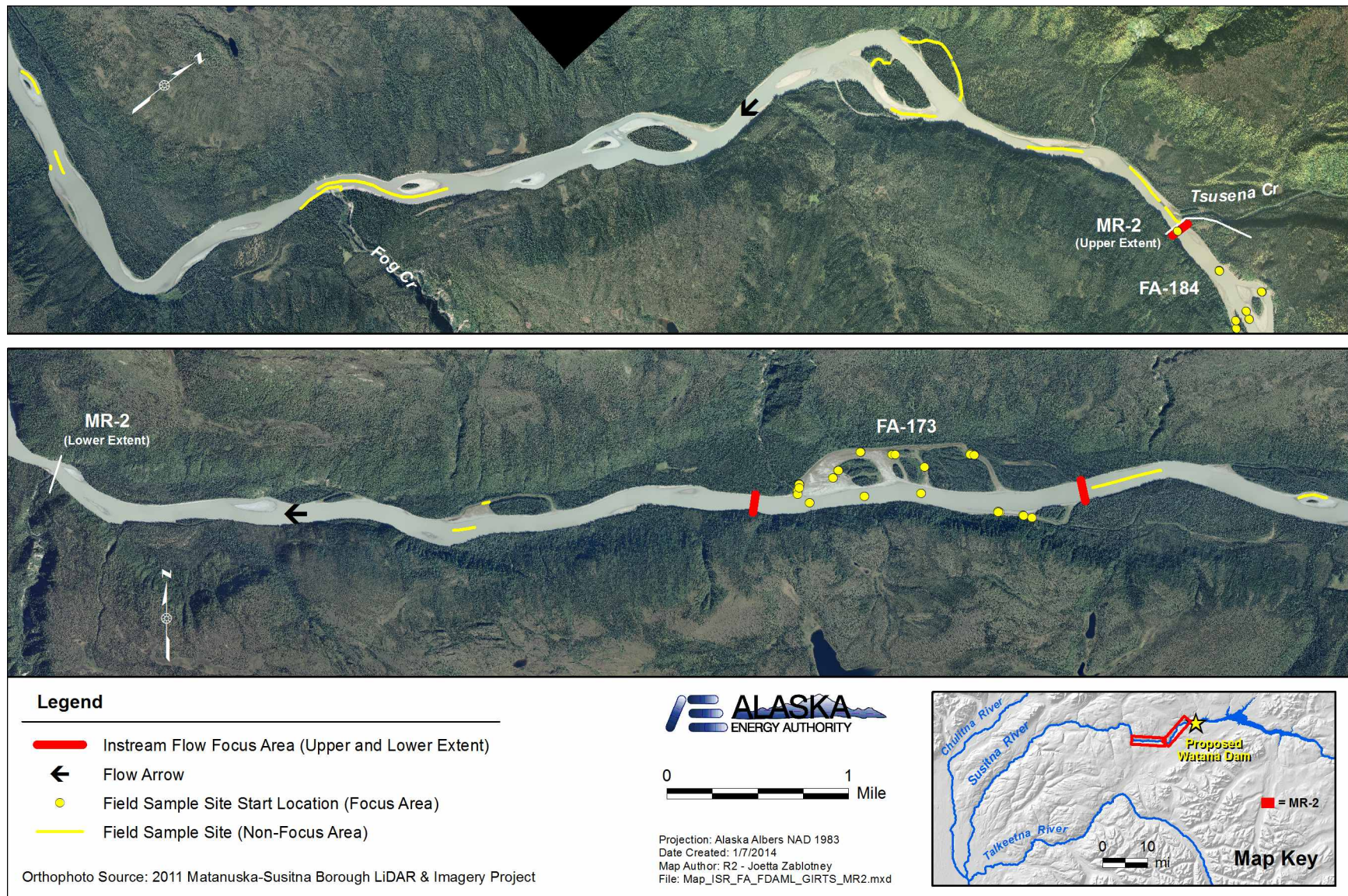


Figure A2. GRTS sites sampled in Geomorphic Reach MR-2 including FA-173 (Stephan Lake Complex), 2013.

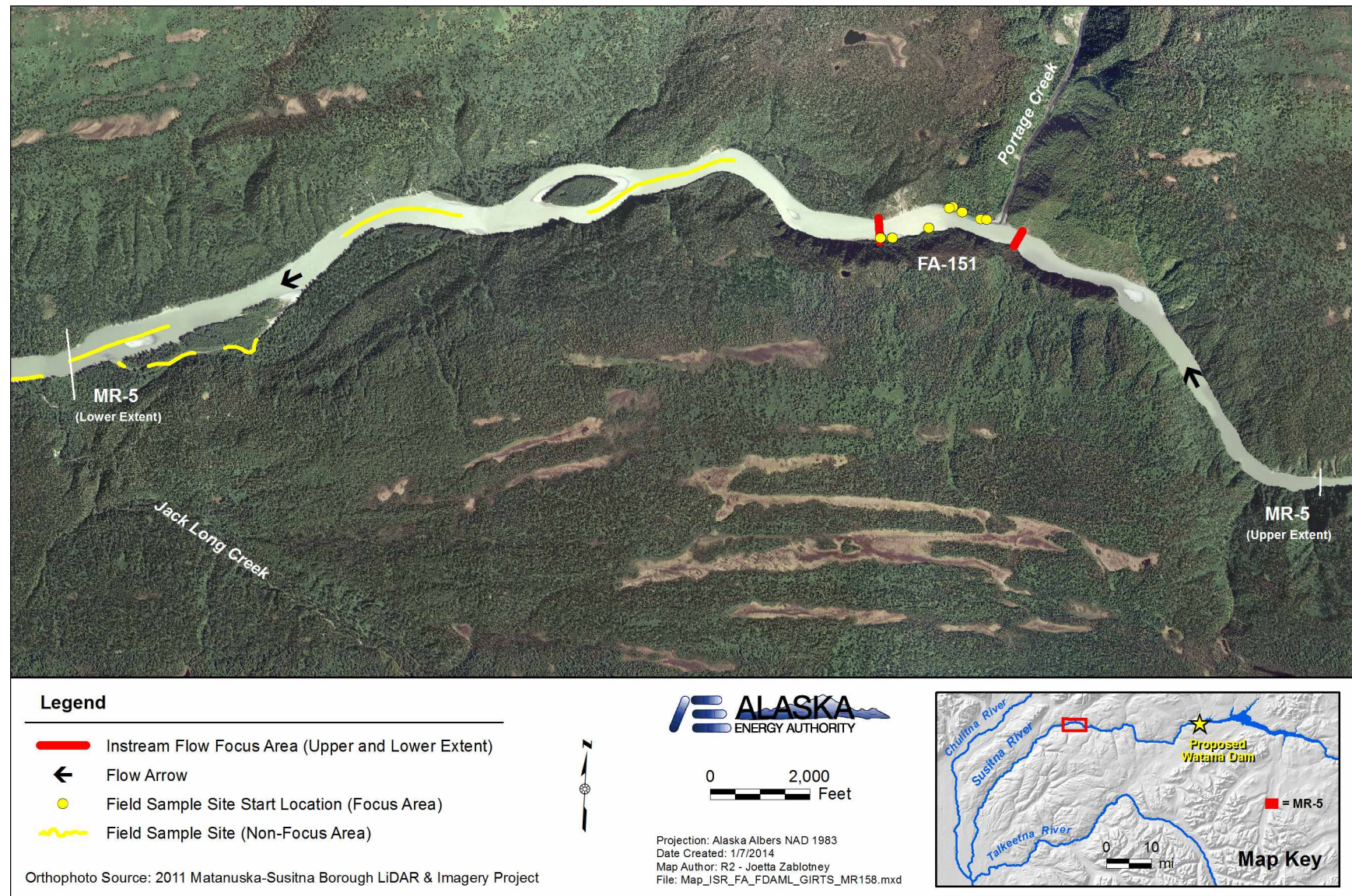


Figure A3. GRTS sites sampled by habitat type for Geomorphic Reach MR-5 including FA-151 (Portage Creek), 2013.

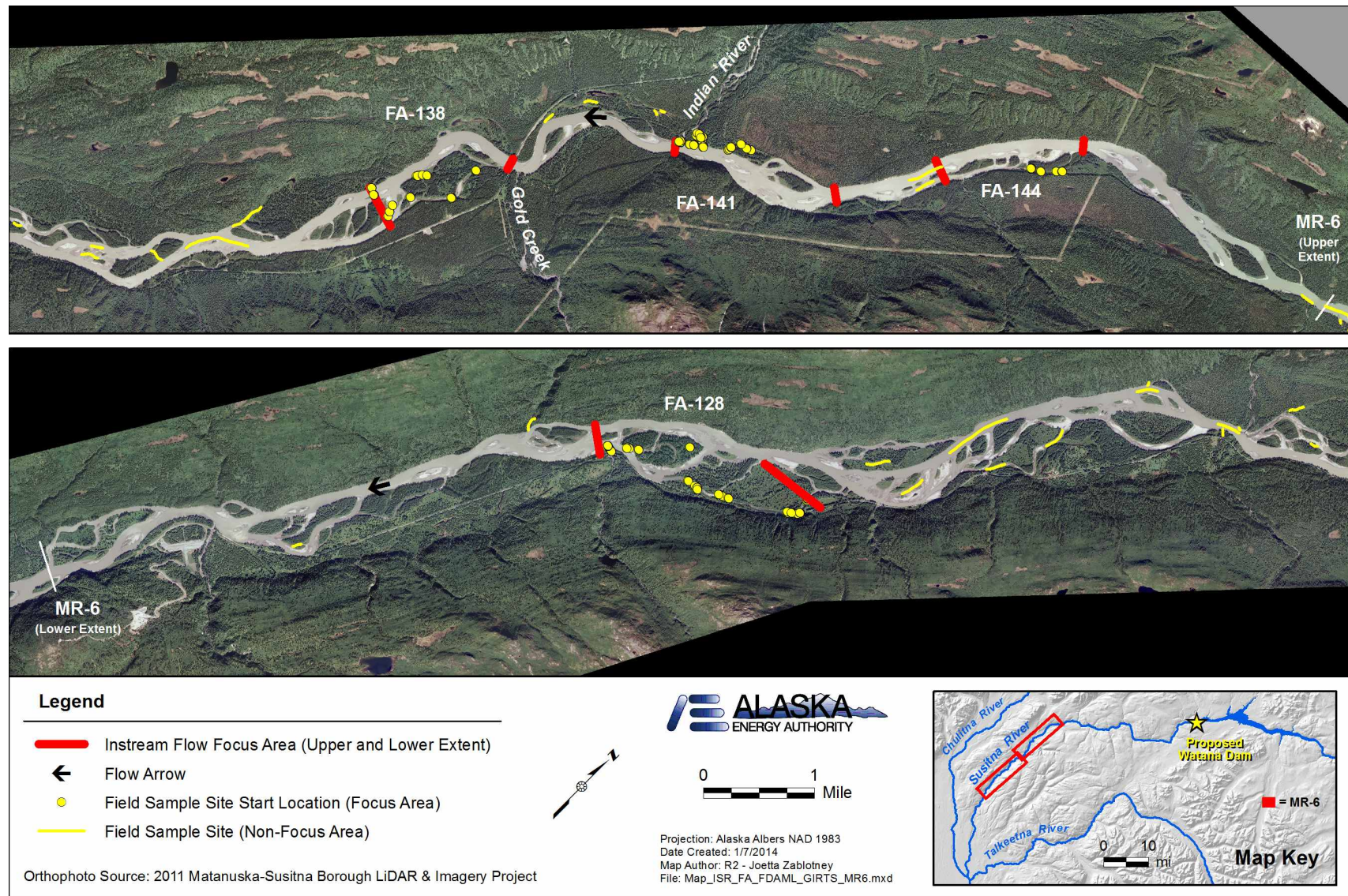


Figure A4. GRTS sites sampled by habitat type for Geomorphic Reach MR-6 including FA 144 (Slough 21), FA-141 (Indian River), FA-138 (Gold Creek), and FA-128 (Slough 8A), 2013.

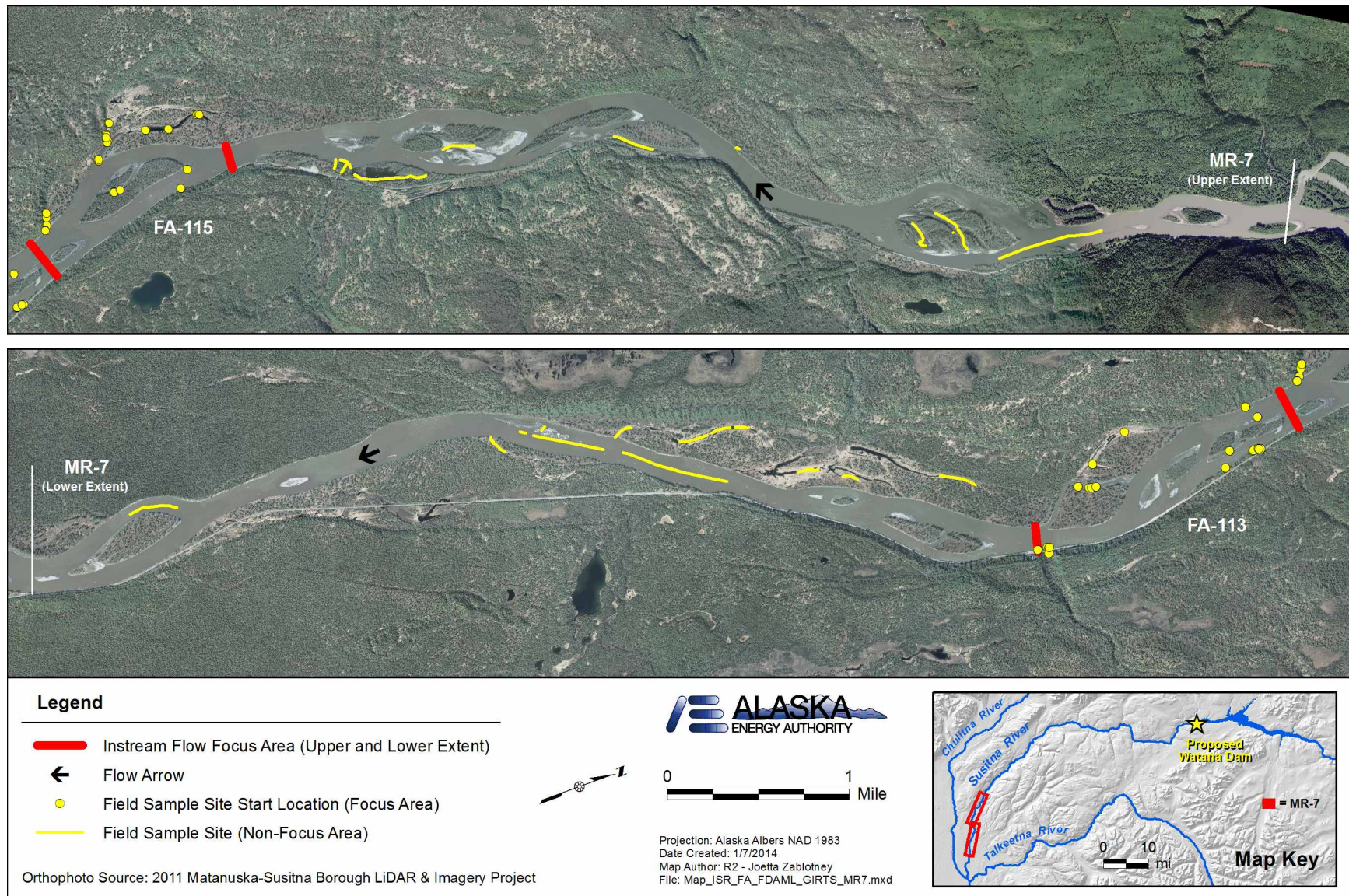


Figure A5. GRTS sites sampled by habitat type for Geomorphic Reach MR-7 including FA-115 (Slough 6A) and FA-113 (Oxbow I), 2013.

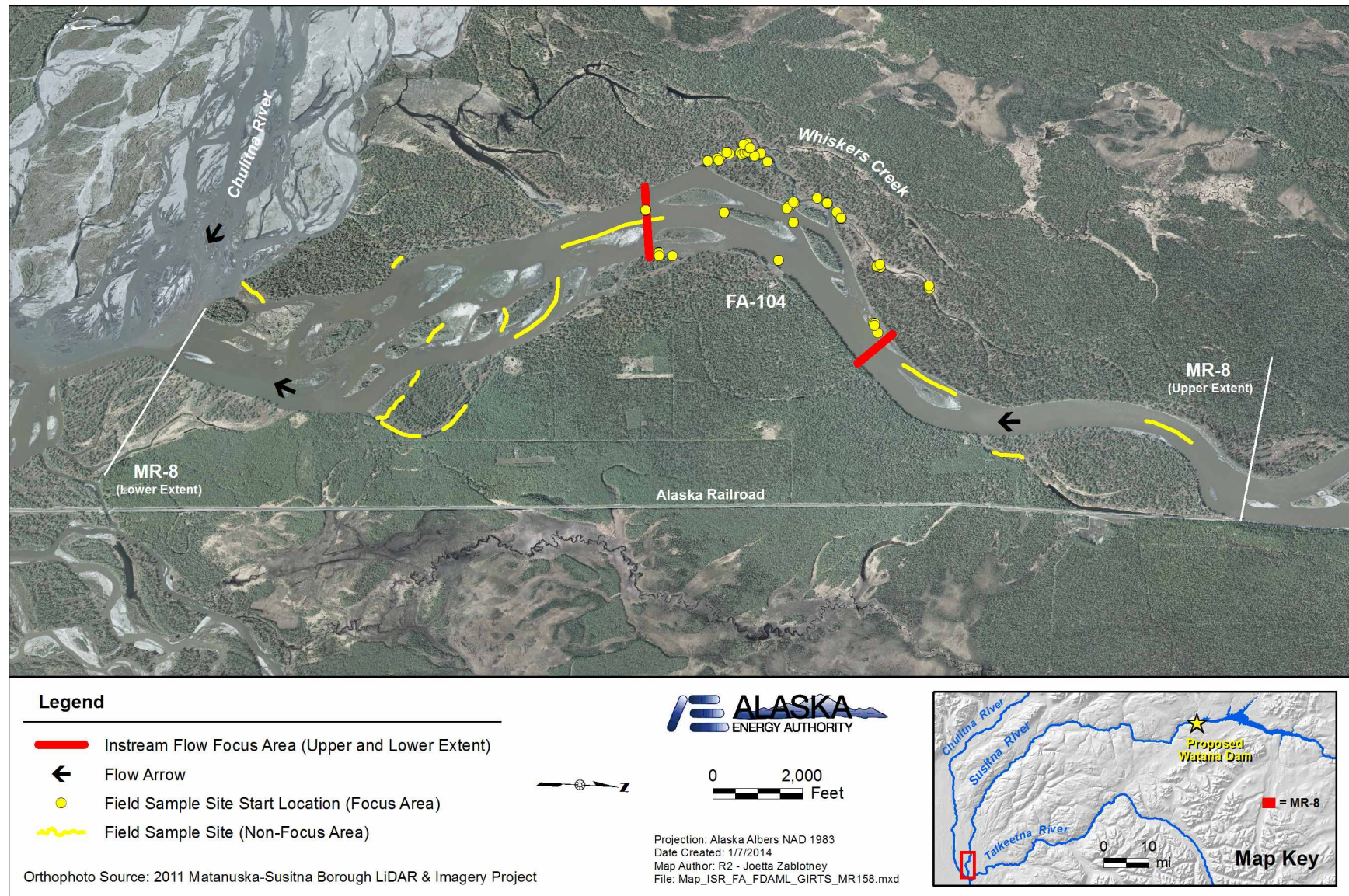


Figure A6. GRTS sites sampled in Geomorphic Reach MR-8 including FA-104 (Whiskers Slough), 2013.

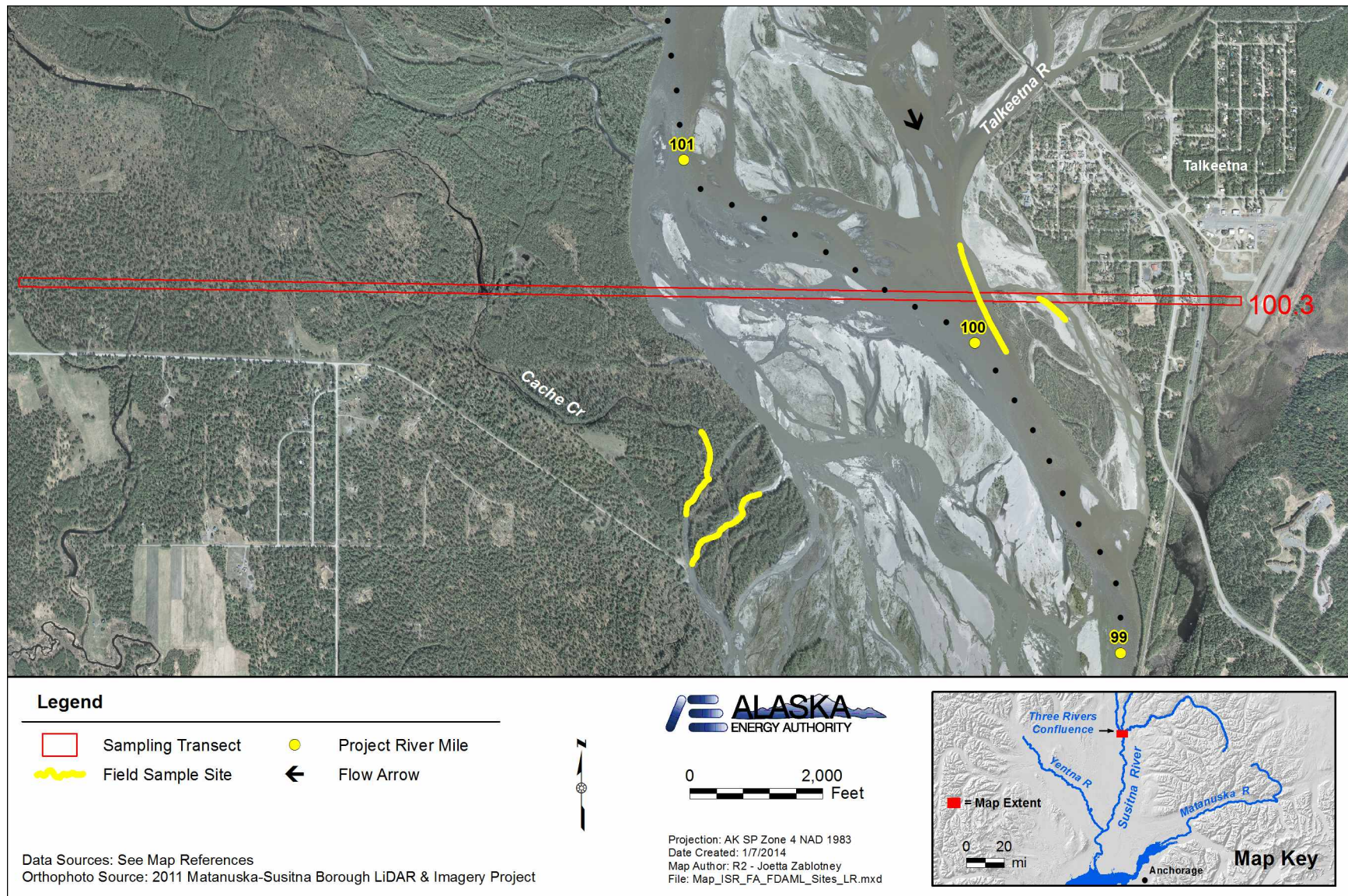


Figure A7. Sites sampled along Lower River transect PRM 100.3, 2013.

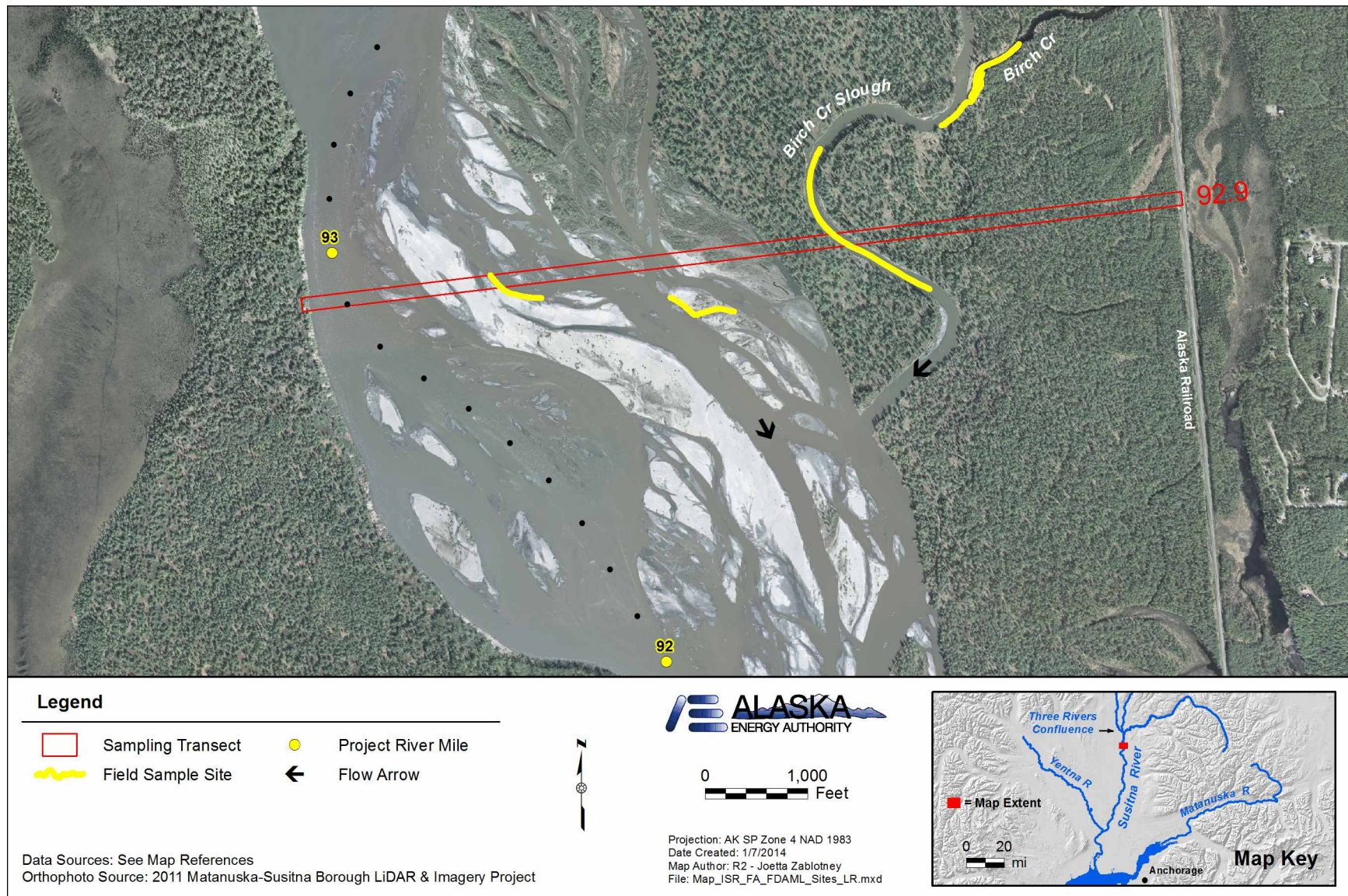


Figure A8. Sites sampled along Lower River transect PRM 92.9, 2013.

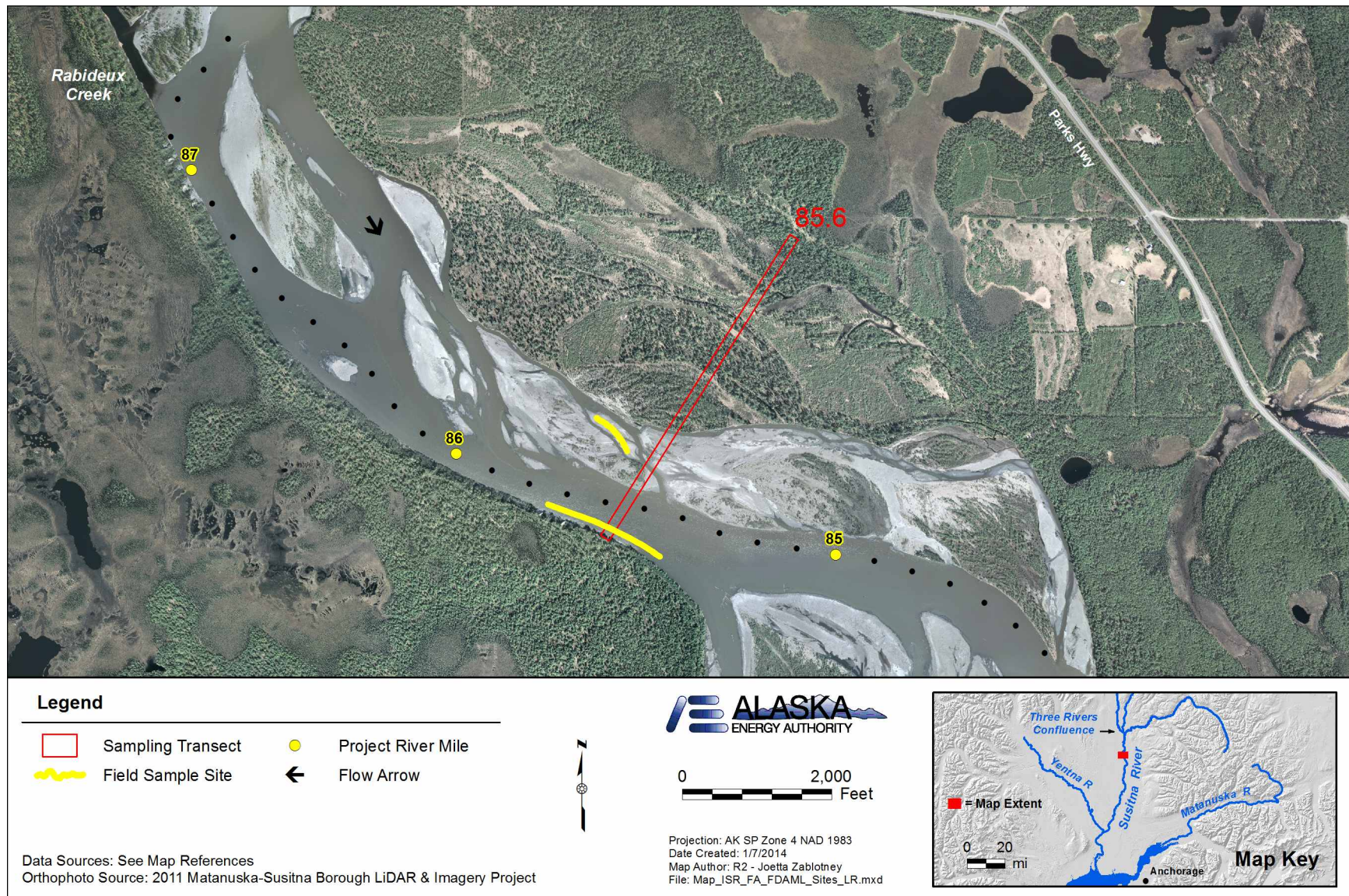


Figure A9. Sites sampled along Lower River transect PRM 85.6, 2013.

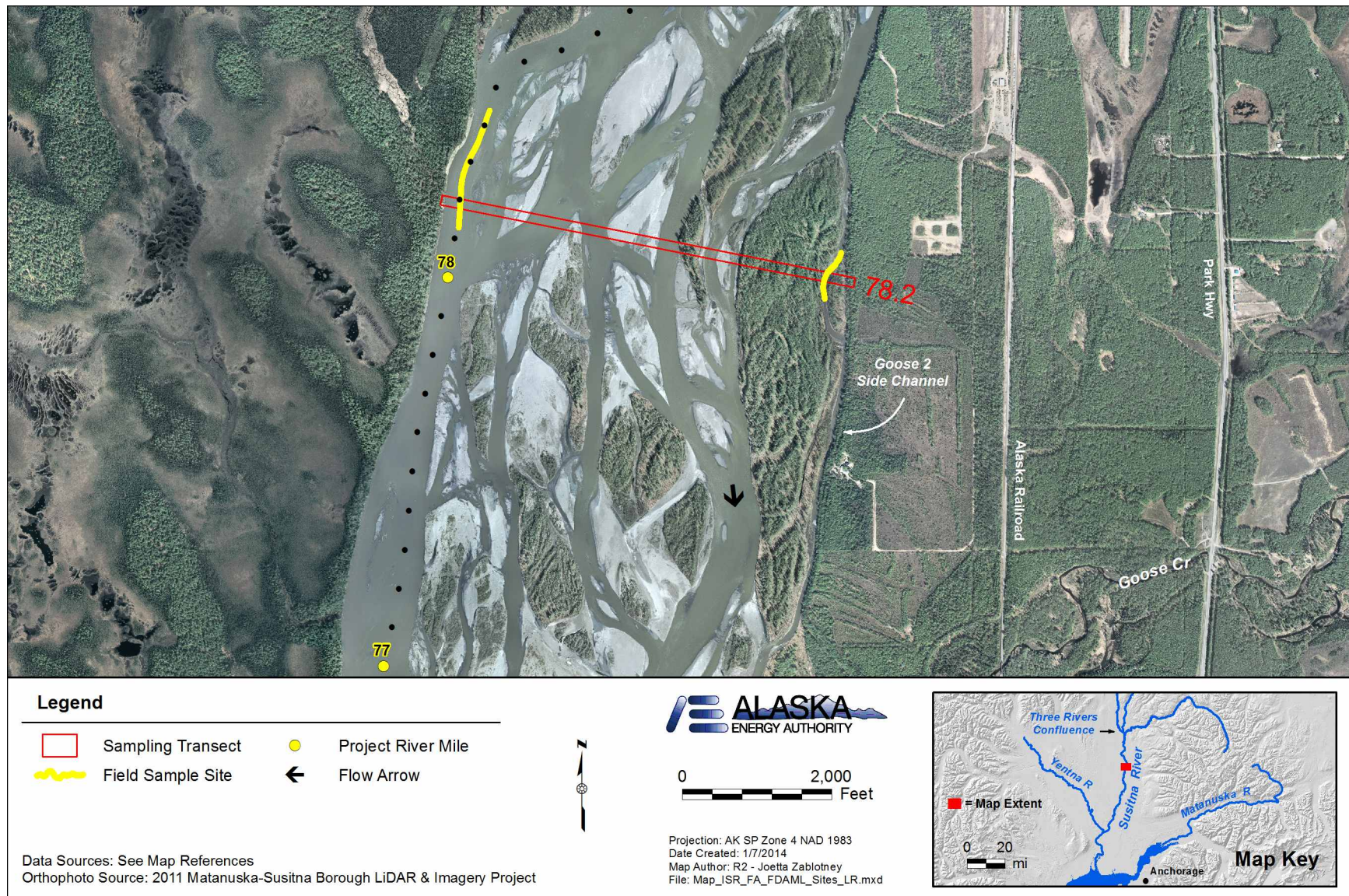


Figure A10. Sites sampled along Lower River transect PRM 78.2, 2013.

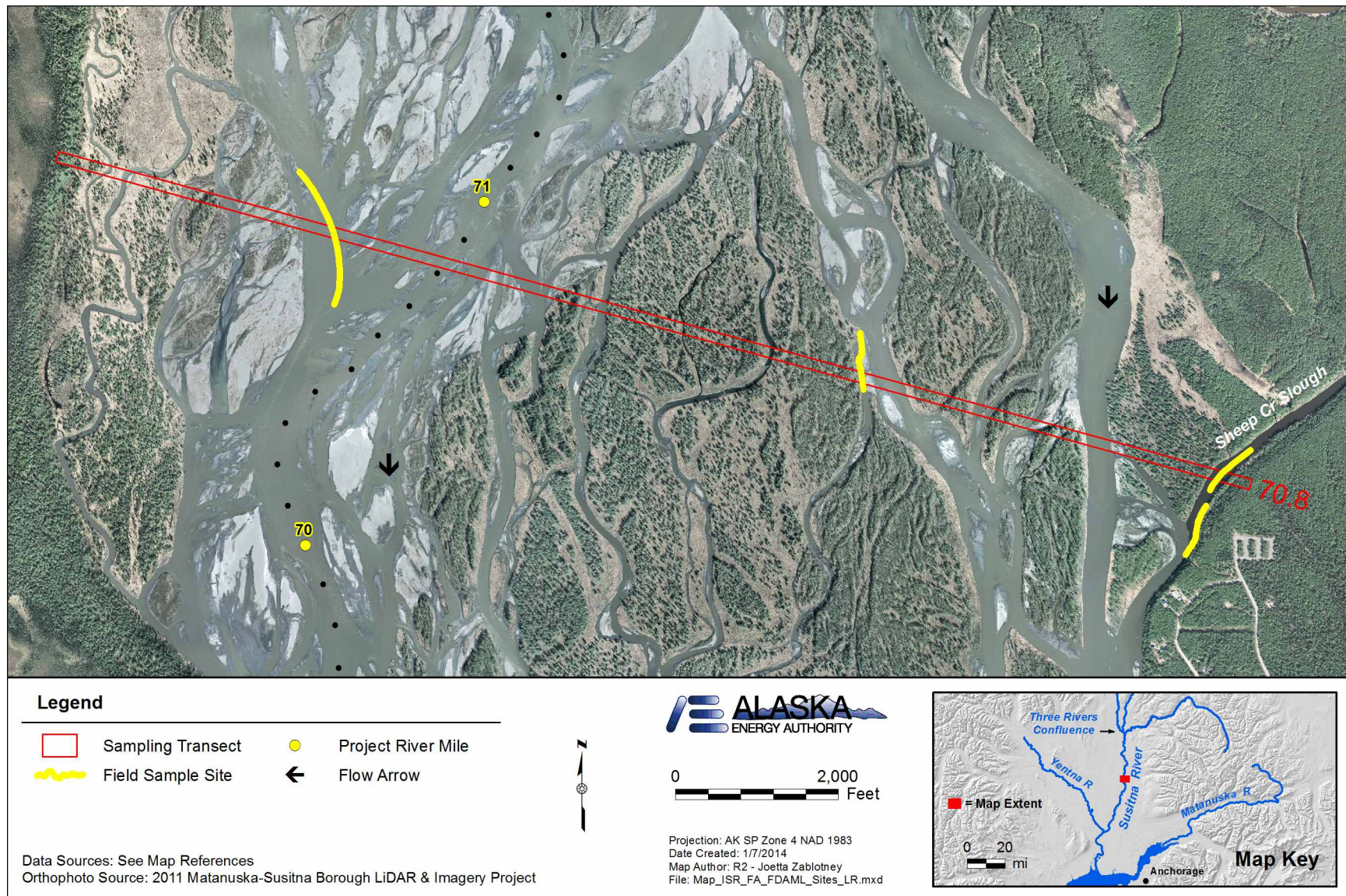


Figure A11. Sites sampled along Lower River transect PRM 70.8, 2013.

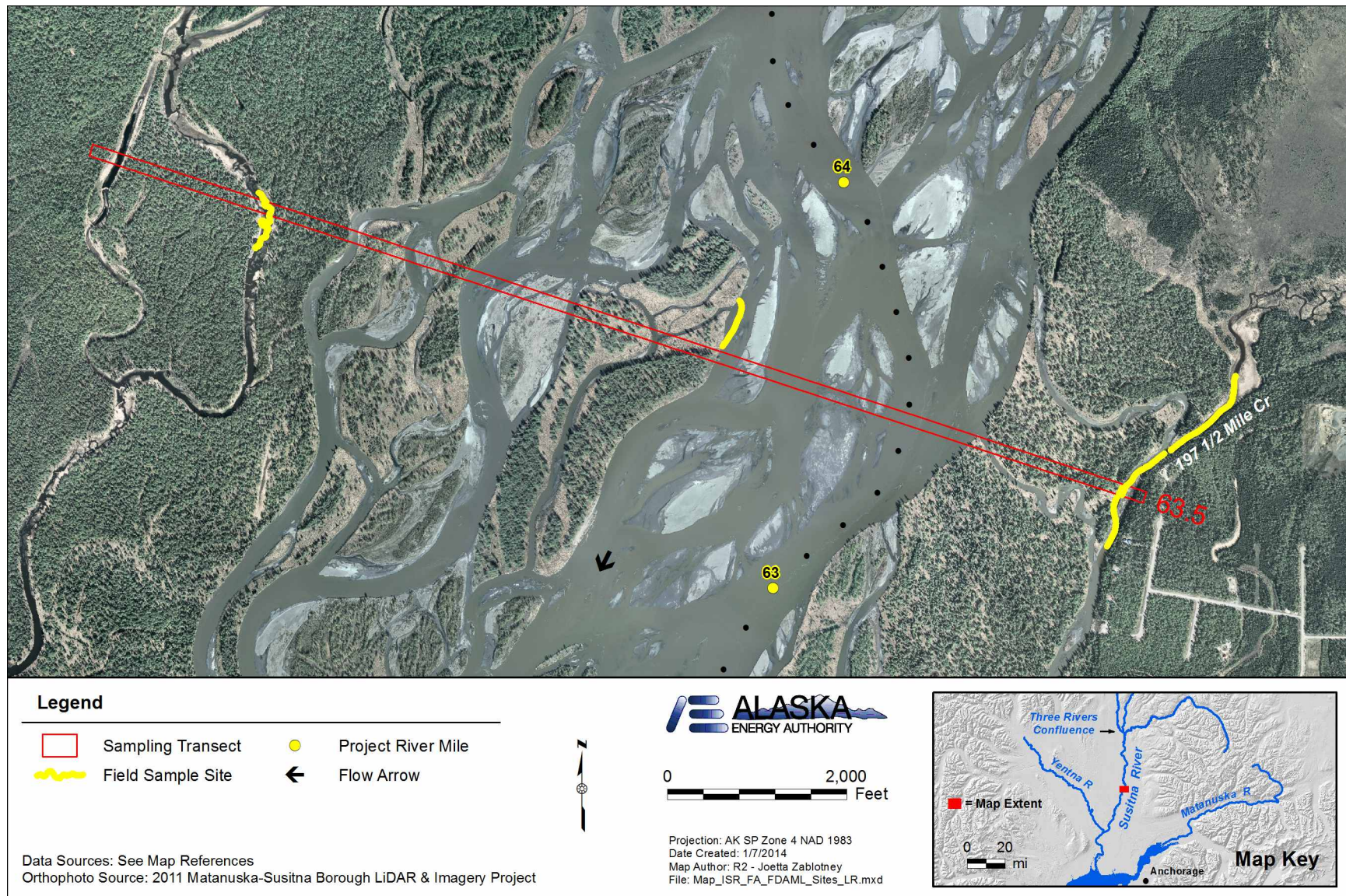


Figure A12. Sites sampled along Lower River transect PRM 63.5, 2013.

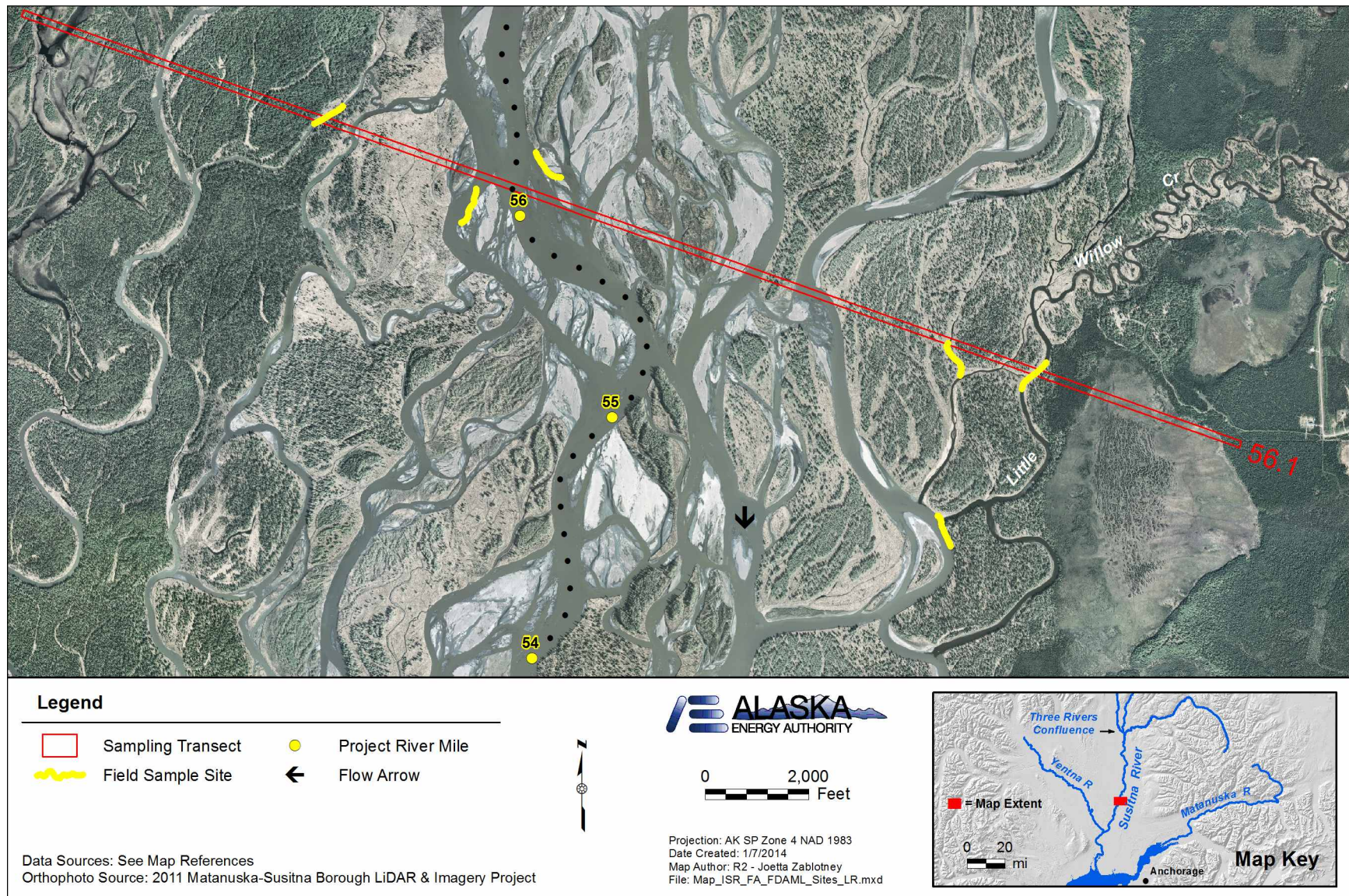


Figure A13. Sites sampled along Lower River transect PRM 56.1, 2013.

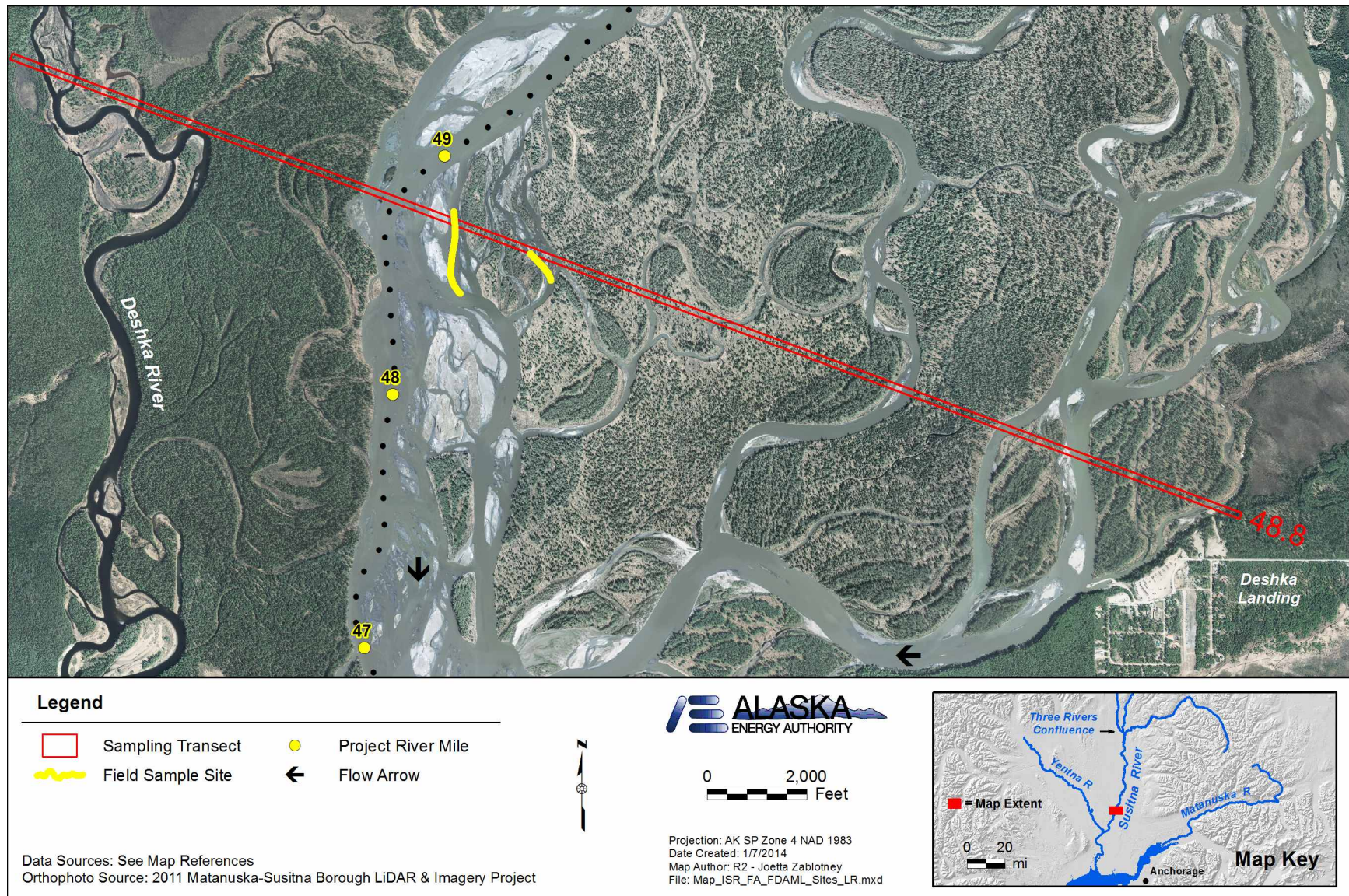


Figure A14. Sites sampled along Lower River transect PRM 48.8, 2013.

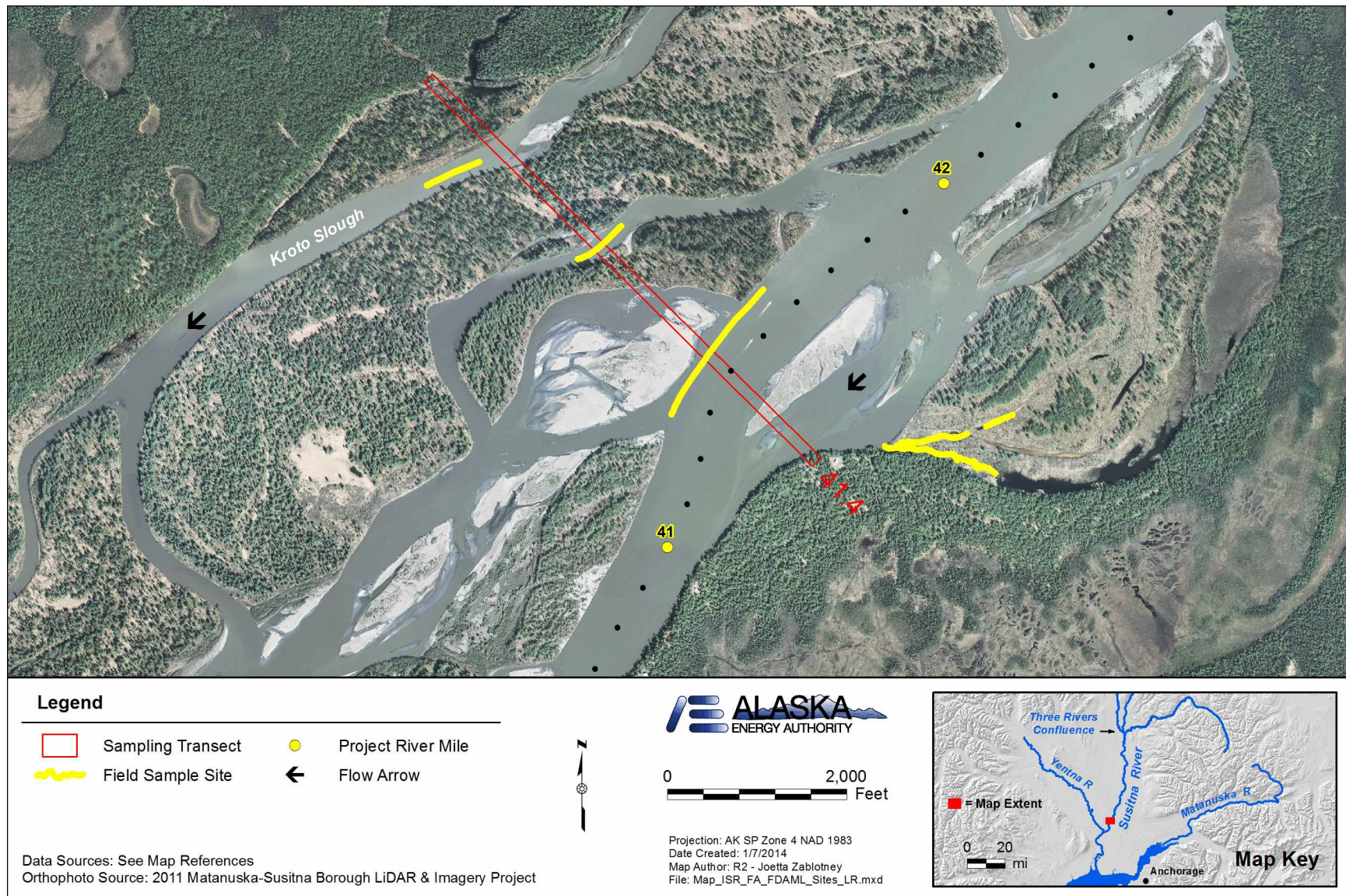


Figure A15. Sites sampled along Lower River transect PRM 41.4, 2013.

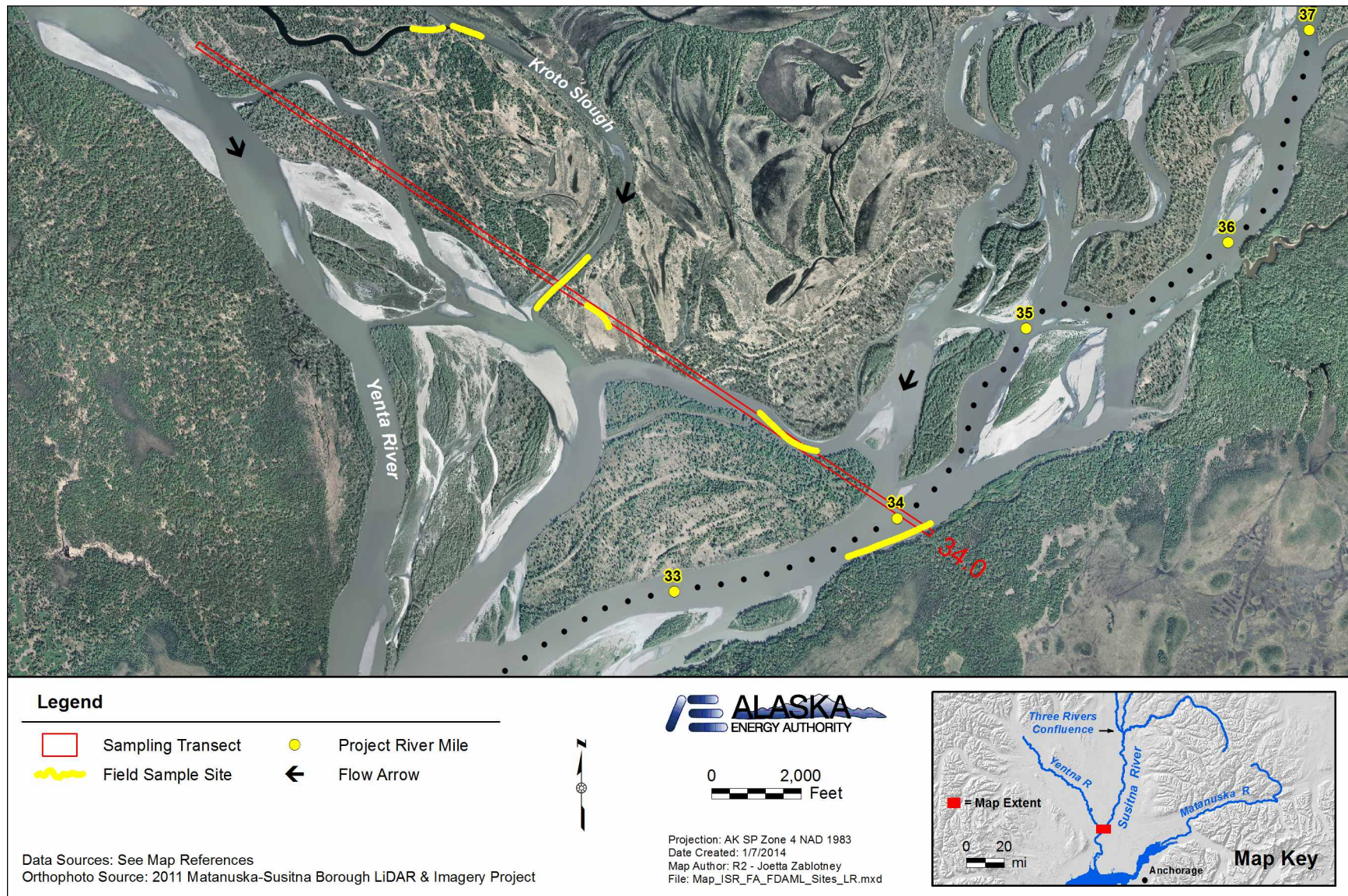


Figure A16. Sites sampled along Lower River transect PRM 34, 2013.