

## Susitna-Watana Hydroelectric Project Document ARLIS Uniform Cover Page

<b>Title:</b> Genetic baseline study for selected fish species, Study plan Section 9.14 : Initial study report -- Part A: Sections 1-6, 8-10		<b>SuWa 223</b>
<b>Author(s) – Personal:</b>		
<b>Author(s) – Corporate:</b> Gene Conservation Laboratory, Commercial Fisheries Division, Alaska Department of Fish and Game		
<b>AEA-identified category, if specified:</b> Initial study report		
<b>AEA-identified series, if specified:</b>		
<b>Series (ARLIS-assigned report number):</b> Susitna-Watana Hydroelectric Project document number 223		<b>Existing numbers on document:</b>
<b>Published by:</b> [Anchorage : Alaska Energy Authority, 2014]		<b>Date published:</b> June 2014
<b>Published for:</b> Alaska Energy Authority		<b>Date or date range of report:</b>
<b>Volume and/or Part numbers:</b>		<b>Final or Draft status, as indicated:</b>
<b>Document type:</b>		<b>Pagination:</b> iv, 40, 2 p.
<b>Related work(s):</b>  The following parts of Section 9.14 appear in separate files: Part A ; Part B ; Part C.		<b>Pages added/changed by ARLIS:</b>
<b>Notes:</b> Contents: Part A. Sections 1-6, 8-10 -- Appendix A. Template for collection trip reports.		

All reports in the Susitna-Watana Hydroelectric Project Document series include an ARLIS-produced cover page and an ARLIS-assigned number for uniformity and citability. All reports are posted online at <http://www.arlis.org/resources/susitna-watana/>



**Susitna-Watana Hydroelectric Project  
(FERC No. 14241)**

**Genetic Baseline Study for Selected Fish Species  
Study Plan Section 9.14**

**Initial Study Report  
Part A: Sections 1-6, 8-10**

Prepared for  
Alaska Energy Authority



Prepared by  
Gene Conservation Laboratory  
Commercial Fisheries Division  
Alaska Department of Fish and Game

June 2014

## TABLE OF CONTENTS

<b>1.</b>	<b>Introduction.....</b>	<b>1</b>
<b>2.</b>	<b>Study Objectives.....</b>	<b>2</b>
<b>3.</b>	<b>Study Area.....</b>	<b>2</b>
<b>4.</b>	<b>Methods and Variances in 2013.....</b>	<b>2</b>
4.1.	Sample Collection.....	3
4.1.1.	Adult Chinook salmon collections.....	3
4.1.2.	Other adult salmon collections.....	5
4.1.3.	Juvenile Chinook salmon collections.....	5
4.1.4.	Other species collections.....	6
4.1.5.	Sampling coordination with other studies.....	7
4.1.6.	Collection trip documentation.....	7
4.2.	Tissue Storage.....	7
4.3.	Laboratory Analysis.....	8
4.4.	Data Retrieval and Quality Control .....	8
4.5.	Variances from Study Plan .....	8
<b>5.</b>	<b>Results.....</b>	<b>8</b>
5.1.	Sample Collection.....	8
5.1.1.	Adult Chinook salmon collections.....	8
5.1.2.	Other adult salmon collections.....	9
5.1.3.	Juvenile Chinook salmon collections.....	9
5.1.4.	Other species collections.....	9
5.1.5.	Pacific salmon sampling coordination with other studies.....	9
5.1.6.	Collection trip documentation.....	10
5.2.	Tissue Storage.....	10
5.3.	Laboratory Analysis.....	10
5.4.	Data Retrieval and Quality Control .....	10
<b>6.</b>	<b>Discussion.....</b>	<b>10</b>
6.1.	Chinook Salmon Adults and Juveniles Above Devils Canyon.....	10
6.2.	Chinook Salmon Adults in the Middle River Below Devils Canyon .....	11
6.3.	Chinook Salmon Adults Elsewhere .....	11
6.4.	Chinook Salmon Juveniles – Lower River .....	11

6.5.	Other Salmon Adults.....	12
6.6.	Other Fish Species .....	12
6.7.	Coordination with Other Studies .....	12
<b>7.</b>	<b>Completing the Study .....</b>	<b>13</b>
<b>8.</b>	<b>Literature Cited .....</b>	<b>13</b>
<b>9.</b>	<b>Tables .....</b>	<b>14</b>
<b>10.</b>	<b>Figures.....</b>	<b>34</b>

## LIST OF TABLES

Table 4-1.	Area, location, and sublocation of baseline samples of adult and juvenile Chinook salmon spawning aggregates for genetic analysis.....	15
Table 4-2.	Location and sublocation of baseline samples of adult sockeye salmon spawning aggregates for genetic analysis. ....	20
Table 4-3.	Location and sublocation of baseline samples of adult chum salmon spawning aggregates for genetic analysis. ....	22
Table 4-4.	Location and sublocation of baseline samples of adult coho salmon spawning aggregates for genetic analysis. ....	24
Table 4-5.	Location and sublocation of baseline samples of adult pink salmon spawning aggregates for genetic analysis. ....	26
Table 4-6.	Resident and non-salmon anadromous fish species targeted for genetic tissue sampling in the Susitna River and samples sizes collected in 2013. ....	28
Table 4-7.	Summary of survey flights conducted during 2013. ....	30
Table 4-8.	Genetic sampling effort through time by river area for adult salmon species in 2013.....	31
Table 4-9.	Juvenile Chinook salmon tissue collections across five habitat types in the Lower Susitna River, through September 15, 2013.....	32
Table 4-10.	Metadata and location of Chinook salmon samples collected above Devils Canyon. ....	33

## LIST OF FIGURES

Figure 2-1. A generalized flow chart to distinguish among hypotheses of population structure for Chinook salmon collected over spawning habitat above Devils Canyon in the Middle and Upper Susitna River.....	34
Figure 3-1. Collection strata for samples collected for genetic archive and/or analysis. ....	35
Figure 4-1. Baseline sampling locations for adult sockeye salmon.....	36
Figure 4-2. Baseline sampling locations for adult chum salmon.....	37
Figure 4-3. Baseline sampling locations for adult coho salmon.....	38
Figure 4-4. Baseline sampling locations for adult pink salmon.....	39
Figure 4-5. Baseline sampling locations for adult and juvenile (inset) Chinook salmon. ....	40

## APPENDICES

Appendix A. Template for collection trip reports.

## LIST OF ACRONYMS, ABBREVIATIONS, AND DEFINITIONS

Abbreviation	Definition
ADF&G	Alaska Department of Fish and Game
AEA	Alaska Energy Authority
CFR	Code of Federal Regulations
CIRWG	Cook Inlet Region Working Group
DNA	deoxyribonucleic acid
FERC	Federal Energy Regulatory Commission
GCL	Gene Conservation Laboratory
GPS	global positioning system
ILP	Integrated Licensing Process
IP	Implementation Plan
ISR	Initial Study Report
ml	milliliter
Mm	Millimeter
MSA	mixed-stock analyses
n/a	not applicable/not available
NOAA	National Oceanic and Atmospheric Administration
NMFS	National Marine Fisheries Service
oz.	ounce
PRM	Project River Mile
Project	Susitna-Watana Hydroelectric Project
RM	River Mile(s) referencing those of the 1980s Project.
RSP	Revised Study Plan
SPD	Study Plan Determination
USFWS	United States Fish and Wildlife Service

## 1. INTRODUCTION

On December 14, 2012, Alaska Energy Authority (AEA) filed its Revised Study Plan (RSP) with the Federal Energy Regulatory Commission (FERC or Commission) for the Susitna-Watana Hydroelectric Project (FERC Project No. 14241) which included 58 individual study plans (AEA 2012). Included within the RSP was the Genetic Baseline Study for Selected Fish Species, Section 9.14. RSP Section 9.14 focuses on understanding the genetic structure of selected species within the Susitna River.

On February 1, 2013, FERC staff issued its study determination (February 1 SPD) for 44 of the 58 studies, approving 31 studies as filed and 13 with modifications. RSP Section 9.14 was one of the 13 approved with modifications. In its February 1 SPD, FERC recommended the following:

*AEA consult with the FWS and NMFS prior to preparing the project operational plans; distribute draft project operational plans to the agencies by March 31 of each year of study implementation; allow 15 days for the agencies to provide comments on the draft plans; file the final plans with the Commission by April 30 of each year of study implementation; and include with the final plans, documentation of agency consultation, a description of how agency comments are incorporated into the final plans, and an explanation for why any agency comments are not incorporated into the final plans.*

*To the extent feasible, we recommend that AEA collect tissue samples over a representative proportion of the entire adult Chinook salmon run.*

*We recommend that AEA include in the 2013 project operational plan, a schedule for when the 2012 genetics studies would be available, and include provisions for filing those results with the Commission through either the initial study report, or a supplemental report in 2013. We also recommend that the report on the 2012 preliminary genetics studies clearly describe the criteria, using current scientific literature, to determine whether there is sufficient genetic uniqueness to estimate the percentage of Chinook originating from Upper and Middle River habitats in areas sampled downstream. Finally, we recommend that the report on the 2012 preliminary genetics studies clearly describe whether the study results indicate that sufficient genetic uniqueness is found to characterize the presence and relative proportion of fish originating from the Upper and Middle River in selected Lower River habitats as described in section 9.14.4.7 of the study plan.*

In accordance with the February 1 SPD, AEA provided a draft 2013 Implementation Plan for the Genetic Baseline Study for Selected Fish Species in the Susitna River, Alaska (Genetics Implementation Plan [IP]) for review on March 31, 2013 and filed a final 2013 Genetics IP on April 30, 2013. The 2013 Genetics IP supersedes portions of the Revised Study Plan.

In accordance with the February 1 SPD, AEA has adopted the FERC requested modifications.

Following the first study season, FERC's regulations for the Integrated Licensing Process (ILP) require AEA to "prepare and file with the Commission an initial study report describing its

overall progress in implementing the study plan and schedule and the data collected, including an explanation of any variance from the study plan and schedule.” (18 CFR 5.15(c)(1)) This Initial Study Report (ISR) on Genetic Baseline Study has been prepared in accordance with FERC’s ILP regulations and details AEA’s status in implementing the study, as set forth in the FERC-approved RSP and as modified by FERC’s February 1 SPD and the 2013 Implementation Plan (collectively referred to herein as the “Study Plan”).

## **2. STUDY OBJECTIVES**

The goals of this study are to (1) acquire genetic material from samples of selected fish species within the Susitna River drainage, (2) characterize the genetic structure of Chinook salmon in the Susitna River watershed and (3) assess the use of Lower and Middle River habitat by juvenile Chinook salmon originating in the Middle and Upper Susitna River.

As described in the 2013 Genetics IP Section 3, the objectives of this study are to:

1. Develop a repository of genetic samples for target resident fish species captured within the Lower, Middle, and Upper Susitna River drainage.
2. Contribute to the development of genetic baselines for chum, coho, pink, and sockeye salmon spawning in the Middle and Upper Susitna River drainage.
3. Characterize the genetic population structure of Chinook salmon from Upper Cook Inlet, with emphasis on spawning aggregates in the Middle and Upper Susitna River.
4. Examine the genetic variation among Chinook salmon populations from the Susitna River drainage, with emphasis on Middle and Upper River populations, for mixed-stock analyses (MSA).
5. If sufficient genetic variation is found for MSA, estimate the annual percent of juvenile Chinook salmon in selected Lower River habitats that originated in the Middle and Upper Susitna River in 2013 and 2014 (Figure 2-1).

## **3. STUDY AREA**

As established in the 2013 Genetics IP Section 2.2, the study area encompasses the Susitna River and its tributaries from Cook Inlet upstream to the Oshetna River confluence (RM 233.4 [PRM 261.3]; Figure 2). For baseline data related to stock-specific sampling, there was an emphasis on tributaries of the Middle and the Upper Susitna River. For assessing habitat use (juveniles) of fish originating from the Middle (RM 98 – 184 [PRM 102.4 – 187.1]) and Upper Susitna River (RM 184 – 233.4 [PRM 187.1 – 261.3]), tissue from juvenile Chinook salmon was collected in the Lower River (< RM 98 [PRM 102.4]).

## **4. Methods and Variances in 2013**

AEA implemented the methods as described in the Study Plan with the exception of variances explained below (Section 4.5).

## 4.1. Sample Collection

For this study fish populations were defined using Waples and Gaggiotti's (2006) definition: a group of individuals of the same species living in close enough proximity that any member of the group can potentially mate with any other member. Functionally, populations were represented by single or pooled collections following the "Pooling Collections into Populations" methods below.

Based on field sampling from previous years (Tables 4-1 to 4-5), information gathered from the Catalog of Waters Important for the Spawning, Rearing or Migration of Anadromous Fishes ADF&G biologists selected possible sites where fish of each target Pacific salmon species might be spawning and generated idealized sample sizes for each site (Tables 4-1 to 4-5). ADF&G and AEA's contractors made an intensive effort to collect these samples as outlined in the sections below. However, AEA recognized at the inception of this project (2013 Genetics IP) that it was unlikely to obtain the idealized sample size at all sites due to uncontrolled variables (i.e., numbers of fish at a spawning location, number of fish returning in 2013 and 2014, access limitations, water conditions, and catchability of the fish). Therefore, a column was added to Tables 4-1 to 4-5 labeled "Expected" that shows the number of fish that could reasonably be sampled at each site (or group of sites) in two years.

AEA implemented the methods for sampling collection targets as described in the 2013 Genetics IP Section 4.2, with no variances. Collection targets, ranged between 0 and 200 individuals per species per location depending on the number of archived samples and prior knowledge about likely sample collection success (Tables 4-1 through 4-6). Samples were acquired from field collections performed as a part of this Study Plan (Studies 9.14), and from each of four interrelated studies: Study of Fish Distribution and Abundance in the Upper Susitna River (Study 9.5); Study of Fish Distribution and Abundance in the Middle and Lower Susitna River (Study 9.6); Salmon Escapement Study (Study 9.7); and Eulachon Run Timing, Distribution, and Spawning in the Susitna River Study (Study 9.16). All four interrelated studies provided samples from resident fish species collected in the course of their work (Table 4-6). Study 9.5 also provided samples of juvenile Chinook salmon (Table 4-1), and Study 9.7 provided samples from adult salmon from the Indian River and from the Middle River at Curry (detailed in Section 4.1.5). Sampling methods for this Study Plan are described below. Sampling methods for the four interrelated studies are described in those respective Initial Study Reports. Analysis of all samples will be integrated and reported in the Updated Study Report.

### 4.1.1. Adult Chinook salmon collections

To address Objectives 3 and 4, tissue samples were to be collected during the study period from Chinook salmon spawning in drainages within Knik Arm and northwestern Cook Inlet, and within the Susitna River drainage. For drainages within Knik Arm and northwest Cook Inlet, this study was to augment the existing baseline by adding collections of up to 200 Chinook salmon from two tributaries from each area. For the Susitna River drainage, this project was to augment the existing baseline such that all tributaries were represented by at least 50 (and ideally 200) Chinook salmon.

Understanding the population structure of Chinook salmon collected above and below Devils Canyon will inform policymakers regarding the relatedness and isolation of spawning aggregates. Population structure of Chinook salmon will be measured at three different levels: within the set of individuals spawning above the canyon; among the groups of individuals spawning within the Susitna River watershed (with particular emphasis on the Middle River and Upper River); and in relationship to populations from nearby drainages in Upper Cook Inlet. These higher-level analyses will anchor the results and help provide a context for interpretation.

Weekly survey flights were conducted from June 11 to September 15 in 2013 to determine the timing and locations for sampling all five species of salmon (Table 4-7) with the most intensive sampling of adult Chinook salmon occurring between July 15 and August 16 in 2013). Sampling crews were dispatched when and where Chinook salmon were observed in spawning habitats. Because Chinook salmon are generally spread out in streams and in lower abundance compared to other salmon species, multi-day sampling trips were required to get an adequate sample from each location (Table 4-1; Figure 4-5). During this time period, each of the three sampling crews attempted to collect samples from at least two locations per week with an average of 2.5 days per trip. The two extra days each week allowed crews to be relocated and resupplied with sampling gear, food, and other camping supplies, and acquire information from GCL staff for their next sampling location(s).

During the intensive Chinook salmon sampling period, two crews were dedicated to sampling in the Susitna River. One crew was dedicated for sampling the Yentna River and northwestern Cook Inlet during the weeks of July 17 and 24 in 2013. Additional field staff collected Chinook salmon samples from locations along the road system in the Susitna River and Knik Arm from June 24 to July 19, 2013. Crews in the Susitna River had a helicopter (Robinson R-44 II; operated by Alpine Air Alaska, Inc.) on call for transport to and from sampling locations because of the large area to be sampled and short window of opportunity each year to collect Chinook salmon samples. The base of operations for the Alpine Air helicopter was Talkeetna. The Yentna River crew chartered helicopter (Enstrom F28F) flights, as needed, through Talaheim Lodge, based on the Talachulitna River.

Chinook salmon were captured using either hook-and-line, seines, or gillnets depending on the size of the stream and where the fish were located. Upon capture, a single axillary process was clipped from each Chinook salmon and placed in a bottle of ethyl alcohol for preservation. For the two Chinook salmon sampled above Devils Canyon, additional paired samples/data were collected including scales, length (mid-eye to fork, to nearest 5 mm), sex, and GPS information (decimal degrees, to the nearest 0.001). Therefore, for these fish, axillary process and five scale samples were sampled into individually-labeled vials. Scales were sampled at a point along the diagonal line from the posterior insertion of the dorsal fin to the anterior insertion of the anal fin, two rows above the lateral line. Length, sex and GPS information was recorded on Rite-in-the-Rain® notebooks paired with the vial identifier. Fish were held in the water as much as possible while hooks were removed and samples were collected, and released immediately after the sample was placed in the bottle. If necessary, crews held the fish in the water to make sure they could swim before releasing them.

Chinook salmon collections also occurred outside the three-week intensive sampling period as early as the second week of June and as late as the second week of August in 2013 (Table 4-8).

Collection trips during less intensive sampling periods were performed by two crews, but trip lengths were longer (approximately 4 days – one trip per crew per week) due to the lower availability of helicopter charters. Helicopter flights were chartered as needed, through Talaheim Lodge and Alpine Air, to access sites above Devils Canyon and sites not efficiently accessed by jet boat. Jet boats were used to access sites accessible from the road system in the Middle Susitna River.

#### **4.1.2. Other adult salmon collections**

To address Objective 2, tissue samples were to be collected from 100 individuals (total archived and samples collected during the study period) from at least three spawning aggregates of pink, sockeye, chum, and coho salmon from each of the following drainages: 1) the Susitna River upstream of the Three Rivers Confluence (Middle Susitna River), 2) the Talkeetna River, and 3) the Chulitna River (Tables 4-2 to 4-5; Figures 4-1 to 4-4). Collections from adult pink, sockeye, chum, and coho salmon began on July 29 and continued through August 23, 2013 (Table 4-8). During the intensive Chinook salmon collection period, samples from these other salmon species were collected opportunistically by the two Susitna River crews. During the week of August 19, each of the two sampling crews was assigned to one of the following drainages to collect samples from at least three locations for each species: 1) the Talkeetna River, and 2) the Chulitna River. Collection locations and method of transport to sampling locations were determined after weekly survey flights. Odd-year pink salmon were present in the Middle Susitna River and Talkeetna River, but not in the Chulitna River. From the weeks of August 26 to September 9, poor weather limited the number of these survey flights (Table 4-7) and high water levels and turbid conditions precluded sampling (Table 4-8). Capture and sampling of salmon followed the methods used for adult Chinook salmon.

Previously documented spawning time periods for each species in the Middle Susitna River, indicated below, were used as the general time periods for sampling trips (Thompson et al. 1986).

- Pink salmon – last week of July to third week of August
- Chum salmon – late-August to mid-September
- Sockeye salmon – late-August to mid-September
- Coho salmon – late-August to late-September

#### **4.1.3. Juvenile Chinook salmon collections**

##### **4.1.3.1. Above Devils Canyon**

To address Objectives 3 and 4, tissue samples were to be collected from a target of 200 juvenile Chinook salmon during the study period at the Oshetna River and in each of Kosina, Fog, and Cheechako creeks. When possible in 2013, collections occurred at the same time as adult salmon collection trips. Collections in 2013 included 71 samples in Kosina Creek and three samples in the Oshetna River (Table 4-1); Cheechako and Fog creeks were not sampled.

Methods for capturing juvenile Chinook salmon in minnow traps followed Magnus et al. (2006). Cured salmon roe was used as bait and several minnow traps were set at each location. Minnow traps were checked at least once per day.

Caudal fin tissue was collected from each juvenile Chinook salmon captured and placed in an individual 2 ml (0.07 oz) vial. Pelvic fins were too small to handle in the field, so caudal fins were sampled instead. Total length (snout-to-fork) was recorded for each sampled juvenile Chinook.

#### **4.1.3.2. Lower River collections**

To address Objective 5, tissue samples were to be collected from 100 juvenile Chinook salmon during the study period from 16 sites across five mainstem habitat types in the Lower Susitna River (1,600 fish total).

Samples of juvenile Chinook salmon collected in the Lower River were classified by habitat type to examine the potential for stock-specific variation in habitat type use. Habitat was classified according to mapping units and categories used in Characterization and Mapping of Aquatic Habitats Study (Study 9.9): main channel, side channel, side slough, backwater, tributary, and tributary mouth. Over the 2-year study, AEA will attempt to collect samples from up to three locations for each habitat type.

Juvenile Chinook salmon in the Lower River were captured using the same methods as described for the juvenile Chinook collections above Devils Canyon. Minnow traps were checked at least once per day. Few new fish were captured between checks and the sampling objective (100 samples per location) was not met in 2013. Multiple locations were selected because the sampling objective could not be met at any of the locations initially selected. Tissue samples were collected using the same methods as described for the juvenile Chinook collections above Devils Canyon.

#### **4.1.3.3. Species identification of juvenile collections**

Species identification was performed in the field using phenotypic characteristics (i.e. Pollard et al. 1997). The eight juvenile putative Chinook salmon collected below Devils Canyon will be analyzed with DNA markers to verify correct field species identification. All Pacific salmon captured above Devils Canyon were sampled and identified in the field as Chinook salmon. Species identification will be confirmed post-season using DNA.

#### **4.1.4. Other species collections**

To address Objective 1, tissue samples were to be collected from up to 50 representative individuals during the study period from each of the resident fish species listed in Table 4-6, with an emphasis on fish collected in the Lower, Middle and Upper Susitna River. Samples of resident fish species were collected opportunistically while crews were collecting adult and juvenile salmon samples. Resident fish were identified to genus or species with a field key. A small piece of fin tissue was sampled from each fish and placed into a bottle or vial of ethyl alcohol for preservation. Samplers recorded on each bottle, or on datasheets for vial collections, from which of the following areas the samples were collected: 1) Chulitna River, 2) Talkeetna

River, 3) Upper Susitna River, 4) Middle Susitna River below Devils Canyon, 5) Middle Susitna River above Devils Canyon, or 6) Lower River. Tissues were placed in separate bottles for each species and area where they were collected.

#### **4.1.5. Sampling coordination with other studies**

Tissue samples were also collected by four other studies in 2013: Study of Fish Distribution and Abundance in the Upper Susitna River (Study 9.5); Study of Fish Distribution and Abundance in the Middle and Lower Susitna River (Study 9.6); Salmon Escapement Study (Study 9.7); and Eulachon Run Timing, Distribution, and Spawning in the Susitna River Study (Study 9.16). Sampling kits and collection protocols were distributed to study leads in advance of the field season.

During the 2013 field season, a series of 15 weekly field progress updates (June 28th through October 7th) were distributed to help coordinate sampling. These updates included upcoming sampling activities for each contractor, progress made towards sampling targets for each combination of species and study stratum, and a summary of sample deliveries to the GCL. In season, there was also frequent direct communication among ADF&G, the contractor liaison, and study leads designated for each interrelated study.

Collection progress was updated using a database accessible to leads for studies 9.5, 9.6, 9.7, and 9.16. Once samples were delivered to the GCL, they were entered into ADFG's LOKI database. Most of these samples were resident fish (Table 4-6) or juvenile Chinook salmon from above Devils Canyon (Table 4-1). As part of the Salmon Escapement Study (Study 9.7), AEA also collected samples from salmon at the Indian River weir, salmon radio-tagged at Curry (PRM 124-126), and salmon radio-tagged in the Lower River near the confluence with the Yentna River (PRM 33-34 of the Lower River, and RM 6 of the Yentna River). Sampling methods for all fish tissue samples provided from the interrelated studies are described in the respective ISRs.

#### **4.1.6. Collection trip documentation**

Detailed notes were kept during each collection trip and then entered into the trip report database in the GCL Oracle database, LOKI, when crews returned to Anchorage (Appendix A). The following information was recorded for each trip: 1) trip logistical information, 2) GPS waypoints where fish were collected, 3) number of fish and species collected at each location, 4) notes on other fish species present, 5) life stage of observed fish, 6) fish habitat information, and 7) recommendations for future collection trips. Collection trip records were used post-season to submit Anadromous Waters Catalog nomination forms.

### **4.2. Tissue Storage**

AEA implemented the methods for tissue storage as described in Section 4.3 of the 2013 Genetics IP, with no variances. While in the field, tissue samples were preserved in ethyl alcohol in either a 125–500 ml (4.2–16.9 oz) bulk sample bottle for each location or individual 2 ml (0.07 oz) vials. After samples were received by the GCL, collection information was recorded in LOKI. For long-term storage, samples were preserved as follows: 1) placed into plastic plates and freeze-dried; 2) once dry, moisture-indicating desiccant beads were added and

the plate sealed completely with aluminum foil heat-activated tape; and 3) tissue samples stored at room temperature.

### **4.3. Laboratory Analysis**

Laboratory analysis began during the fourth quarter of 2013 (Figure 7.1), and methods were described in detail in the 2013 Genetics IP Section 4.4.

### **4.4. Data Retrieval and Quality Control**

Data retrieval and quality control will be accomplished as part of different ongoing activities, the first of which began in the fourth quarter of 2013. The 2013 Genetics IP Section 4.5 contains detailed descriptions of data retrieval and quality control methods.

### **4.5. Variances from Study Plan**

In 2013, there were no variances from the collection, storage and analysis methods described in the Genetic Baseline Study Plan; however, full access to all of the sampling sites in the 2013 Genetics IP was not available in 2013. The Study Plan for 2013 included sampling on streams that required access to Cook Inlet Regional Working Group (CIRWG) lands. Access was not granted to CIRWG lands in 2013, thereby fully or partially restricting sampling on some streams. Lack of access to CIRWG lands above or near Devils Canyon prevented potential sampling of Chinook salmon on Cheechako, Devil, Fog, Tsusena, and Watana creeks. Lack of access to CIRWG lands also prevented potential sampling at Portage and Prairie creeks for coho salmon, and reduced sampling at Prairie Creek for sockeye salmon. The study was designed to collect the target number of samples over multiple years. AEA will attempt to meet sampling targets for the locations on CIRWG lands in the next year of study if permission is granted to access these sites. Analysis of 2013 and 2014 collections will provide insight into whether there is a loss in power to test for stability in allele frequencies across years for Chinook salmon (testing between hypotheses 1a, 1b; Figure 2-1) and, if there is, the magnitude of this loss in power.

## **5. RESULTS**

### **5.1. Sample Collection**

Sample collection results include all collections delivered to the GCL by September 15, 2013.

#### **5.1.1. Adult Chinook salmon collections**

Survey flights to determine distribution and availability of Chinook salmon for sampling occurred from the week of June 8 to August 19 (Table 4-8). Fifty sites were surveyed from the air. AEA attempted to sample at 30 sites and successfully sampled at 27 sites (Table 4-1). Samples from 1,131 adult Chinook salmon were collected. Most of these samples were taken from the Susitna River drainage (1,073). Two of these samples were from above Devils Canyon. The remaining samples came from other drainages within upper Cook Inlet.

### **5.1.2. Other adult salmon collections**

Survey flights to determine distribution and availability of other adult salmon species for sampling occurred from the week of July 29 to August 19 (Table 4-8). Of the 85 sites visited, 25 sites were surveyed from the air but sampling was not attempted (no fish or too few fish observed to justify sampling), 34 sites were sampled but no fish were captured, and 26 sites were successfully sampled for at least one adult salmon. Samples from 295 sockeye salmon were collected from 13 streams (Table 4-2). Samples from 641 chum salmon were collected from 14 streams (Table 4-3). Samples from 68 coho salmon were collected from 5 streams (Table 4-4). Samples from 1,041 pink salmon were collected from 12 streams (Table 4-5).

### **5.1.3. Juvenile Chinook salmon collections**

#### **5.1.3.1. Above Devils Canyon**

Sampling trips to collect juvenile Chinook salmon above Devils Canyon were conducted seven times in 2013. A total of 138 samples from juvenile Chinook salmon collected above Devils Canyon are available for analysis. Samples from 103 juvenile Chinook salmon were collected in 2013 from two tributaries above Devils Canyon (Oshetna River, n=32; Kosina Creek, n=71; Table 4-1). Of the 32 samples collected in the Oshetna River, 29 were acquired by ISR Study 9.5 (Study of Fish Distribution and Abundance in the Upper Susitna River). No samples were collected in Fog or Cheechako creeks in 2013. Archived tissues collected in 2012 are also available from Fog Creek (n=35).

#### **5.1.3.2. Lower River collections**

Sampling trips to collect juvenile Chinook salmon in the Lower River were conducted four times in 2013. Samples from eight juvenile Chinook salmon were collected from the Lower River (Table 4-1). These samples were all collected from slough habitat on July 5, 2013 (Table 4-9).

### **5.1.4. Other species collections**

In 2013, opportunistic sampling for other (resident) species was conducted during all sampling trips and by the four interrelated AEA studies. In total, samples were collected from 1,255 fish, with sampling sites further broken into one of six potential strata (Table 4-6). The target sample size of 50 total fish per species reached for nine species (burbot, Dolly Varden, eulachon, Arctic grayling, slimy sculpin, three-spine stickleback, longnose sucker, rainbow trout, and round whitefish). No samples were collected for eight species (Alaska blackfish, Pacific lamprey, coastrange sculpin, Pacific staghorn sculpin, prickly sculpin, lake trout, Bering cisco, and lake whitefish).

### **5.1.5. Pacific salmon sampling coordination with other studies**

As part of the Salmon Escapement Study (Study 9.7), Pacific salmon were collected by AEA at the Indian River weir and from salmon radio-tagged at Curry. The 9 Chinook, 2 pink, 1 sockeye, and 13 chum salmon samples collected at the Indian River weir will be added to the baseline if needed. The 609 Chinook (including jacks), 232 coho, 201 chum, 199 pink, and 139 sockeye salmon samples taken from salmon radio-tagged at Curry will be used if the final spawning

locations can be determined from telemetry and sampling targets have not been met. Because of uncertainty about whether these samples will be added to the baseline, these collections are not reported in Tables 4-1 and 4-5.

In addition, samples of Pacific salmon were collected at fishwheel sites as part of AEA-funded projects administered by the ADF&G Division of Sport Fish, but those samples were not delivered to GCL by September 15, 2013.

#### **5.1.6. Collection trip documentation**

A total of 11 entries were made into the GCL Oracle database to document survey trips and 61 entries were made to document collection trips.

### **5.2. Tissue Storage**

For most of the collections (75 percent), samples were placed into bottles (multiple fish per container). In the remaining collections, samples were placed into vials (one fish per container).

### **5.3. Laboratory Analysis**

Laboratory and statistical analyses are ongoing and no results are available for inclusion in this Initial Study Report. Preliminary analyses will be used to inform consultations with USFWS and NMFS. Final analysis methods will be informed by these consultations.

### **5.4. Data Retrieval and Quality Control**

Data retrieval and quality control are ongoing and no results are available for inclusion in this Initial Study Report.

## **6. DISCUSSION**

The study was designed to achieve the target number of samples over the course of multiple years. With a few exceptions, sample collections of Pacific salmon species delivered to GCL through September 15, 2013 were sufficient to maintain progress toward study objectives (“Expected” columns in Tables 4-1 to 4-5). AEA will attempt to meet sampling targets for the locations on CIRWG lands in the next year of study if permission is granted to access these sites. However, even if sampling targets are met, limited access to these sites in 2013 may have reduced the power to test for stability in allele frequencies across years for Chinook salmon (testing between hypotheses 1a, 1b; Figure 2-1). Analysis of collections from 2013 and subsequent years will provide insight into whether there is a loss in power and, if there is, the magnitude of this loss in power.

### **6.1. Chinook Salmon Adults and Juveniles Above Devils Canyon**

Section 4.2 of the 2013 Genetics IP outlined sample collection in locations across the Susitna River basin. In 2013, Alaska Energy Authority was not granted access to Cook Inlet Regional

Working Group (CIRWG) lands to collect samples associated with this study. As a result AEA did not collect samples of adult salmon where they were observed on CIRWG lands from the air or through radio-tag tracking. For adult Chinook salmon, tributaries not accessed included Watana, Tsusena, Fog, Devil, and Cheechako creeks (all above or within Devils Canyon on the Susitna River). In addition, Portage Creek (below Devils Canyon on the Susitna River) and Prairie Creek (a Talkeetna River tributary) received a reduced sampling intensity due to lack of land access. Coho salmon adults were not sampled in Prairie and Portage creeks, and sampling effort for adult sockeye salmon was reduced.

## **6.2. Chinook Salmon Adults in the Middle River Below Devils Canyon**

Major strides were made toward collecting Chinook salmon in the Susitna drainage below Devils Canyon in 2013. Overall, 1,071 fish were collected from 23 sites. These numbers are close to what was anticipated for 2013 and 2014 combined (1,032 fish from 20 to 29 sites), although the geographic distribution of the collections differs. In the Yentna River, 202 fish were collected from three sites (project expected 390 fish from 9 sites over two years). In the Chulitna River, 444 fish were collected from 9 sites; (project expected 218 fish from 2 to 8 sites over two years). In the Middle River, below Devils Canyon, 95 fish were collected from 2 sites (project expected 134 fish from 2 to 6 sites over two years). In Talkeetna River, 246 fish were collected from 6 sites (project expected 131 fish from 2 to 6 sites over two years). Finally, from the Lower River, 84 fish were collected from 3 sites (project expected 159 fish from 5 to 9 sites over two years).

## **6.3. Chinook Salmon Adults Elsewhere**

Progress was made toward collecting Chinook salmon in the other drainages from Upper Cook Inlet in 2013. In the western side of Cook Inlet, 42 fish were collected from one site (study expected 235 fish from 4 sites over two years). In the Knik Arm, 16 fish were collected from two sites (study expected 181 fish from 5 to 7 sites over two years). Additional samples collected in 2013 are expected to arrive at the GCL from ADF&G Division of Sport Fish from weirs at three of these sites.

## **6.4. Chinook Salmon Juveniles – Lower River**

Despite four trips to collect juvenile Chinook salmon in the Lower River, only eight fish were sampled; all were from slough habitat on one sampling day (Table 4-9). Therefore, additional ADF&G staff, with vast experience annually capturing thousands of juvenile Chinook salmon from Southeast Alaska rivers, were invited to conduct a four-day training course on the Lower River during the week of September 23, 2013. This course was intended to train field crews on how to cure bait and bait traps and how to identify appropriate locations for setting traps and pulling seines following the methods outlined in Magnus et al. (2006). These techniques were applied late in the season in 2013 and will be applied during the next year of study. Results from these sampling efforts will be used to guide future sampling for juvenile Chinook salmon in the Lower River.

## 6.5. Other Salmon Adults

Fish were sometimes not found in sublocations where ADF&G expected to find them, but the study teams were able to capture fish in other sublocations within the targeted location. This was especially the case for pink and chum salmon, where less was known about the spawning distribution at the beginning of this study (Tables 4-3 and 4-5).

For odd-year pink salmon, AEA sampled fewer than the targeted 300 fish within the Chulitna River (one fish), but met target sample numbers in the Middle Susitna River and Talkeetna River. These odd-year pink salmon do not appear to utilize spawning habitats in the Chulitna River. Odd-year pink salmon will not be available in 2014, so AEA's ability to meet the target sample sizes for odd-year pink salmon in the Chulitna River will depend on the schedule of future sampling.

Section 4.2.2 of the 2013 Genetics IP described a schedule of weekly survey flights between June 8 and September 23, and Section 4.2.3 described the plan for three sampling crews between late July and late September for adult salmon species other than Chinook salmon. Poor weather between August 19 and September 15, 2013 resulted in four fewer survey flights (Table 4-7) than planned. These cancelled survey flights represent 18 percent (4/22) of the survey flights planned for the season. This poor weather period also kept crews out of the field for three of the eight weeks (Table 4-8) called for in the 2013 Implementation Plan. This reduced survey effort came during the expected run timing of chum, sockeye, and coho salmon to their spawning grounds. For these three species, less progress was made towards achieving the sampling targets than expected in 2013, but it is anticipated that the sample targets can be achieved during the next year of study to meet study objectives (Table 4-5).

## 6.6. Other Fish Species

Sample collections through September 15, 2013 were sufficient to attain or make progress towards study objectives for some resident species (Objective 1). Although the target sample size for each species was 50 fish for the entire Susitna River drainage, ADF&G also wanted to know roughly what part of the drainage the samples came from, and so asked field crews to reference each collection to one of six location "strata" in the drainage. ADF&G asked each field crew to collect up to 50 specimens from their strata to ensure the minimum for the drainage was met. Because crews worked concurrently in different strata, this meant 50 samples were able to be collected in multiple places for some species, and caused the drainage-wide target to be exceeded (e.g., rainbow trout; Table 4-6).

The approved study methods include only opportunistic collection of resident fish species. Targets of 50 fish per species may not be met for those species that were not present during sampling, or were not susceptible to the sampling gear. No laboratory or statistical analyses are planned for genetic samples from resident species in this study.

## 6.7. Coordination with Other Studies

Tissue samples from salmon radio-tagged by interrelated Study 9.7 provided a relatively high number of backup salmon samples in 2013. These samples will continue to be archived at the

GCL in the winter of 2013/2014; those fish whose final destinations can be determined will then be used to help fill any incomplete baselines at the end of this study. For resident fish species, the coordination with studies 9.5, 9.6, 9.7, and 9.16 allowed considerable success in 2013 (full or partial collection of samples for 12 of 20 species identified in the 2013 Study Plan). Species with no collections were likely either not in the study areas or were not vulnerable to the capture gear, making it unlikely that their collection targets can be reached with opportunistic sampling.

## 7. COMPLETING THE STUDY

[Section 7 appears in the Part C section of this ISR.]

## 8. LITERATURE CITED

- Alaska Energy Authority (AEA). 2012. Revised Study Plan: Susitna-Watana Hydroelectric Project FERC Project No. 14241. December 2012. Prepared for the Federal Energy Regulatory Commission by the Alaska Energy Authority, Anchorage, Alaska. <http://www.susitna-watanahydro.org/study-plan>.
- Magnus, D. L., D. Brandenburg, K. F. Crabtree, K. A. Pahlke, and S. A. McPherson. 2006. Juvenile salmon capture and coded wire tagging manual. Alaska Department of Fish and Game, Special Publications No. 06-31, Anchorage.
- Pollard, W. R., G. F., Hartman, C. Groot and P. Edgell. 1997. Field identification of coastal juvenile salmonids. Harbor Publishing.
- Thompson, F. M., S. N. Wick, and B. L. Stratton. 1986. Alaska Department of Fish and Game Susitna River Aquatics Studies Program. Report # 13, Volume 1: Adult Salmon Investigations May – October 1985. Alaska Power Authority, Anchorage, Alaska.
- Waples, R. S. and O. Gaggiotti. 2006. INVITED REVIEW: What is a population? An empirical evaluation of some genetic methods for identifying the number of gene pools and their degree of connectivity. *Molecular ecology*, 15(6): 1419-1439.

## 9. TABLES

**Table 4-1. Area, location, and sublocation of baseline samples of adult and juvenile Chinook salmon spawning aggregates for genetic analysis. Sample sizes show number of samples and sample years for collections already in the Gene Conservation Laboratory archives (Archived), number of samples to obtain the ideal archived sample size (Ideal), the anticipated number to be collected over the two years of this project based on past sampling effort and success and information from the Anadromous Waters Catalog and local biologists (Expected), progress made toward sampling targets this year (2013), and the resulting total sample size after combining the amount archived with the 2013 samples (Total). An “S” in the 2013 column indicates that a survey was performed but sampling was not attempted, a “-” indicates that no survey was performed. Some of the expected numbers are for groups of locations. Sampling locations originally not included in the implementation plan have been included, and are indicated by an “n/a” ideal and expected value. New locations that are now included in grouped locations are sharing the expected value for their group. Map numbers (Map No.) correspond to location numbers on Figure 4-5.**

					Sample sizes			
					This project			
Area	Location	Sublocation	Map No.	Year(s) Collected (# archived)	Ideal	Expected (all years)	2013	Total
Adult Chinook salmon								
West Side Cook Inlet	Chuitna River		1	2008, 2009 (142)	200	58	-	142
	Beluga River	Coal Creek	2	2009, 2010, 2011 (120)	200	80	-	120
	Theodore River		3	2010, 2011, 2012 (189)	200	11	42	<b><u>231</u></b>
	Lewis River		4	2011, 2012 (86)	200	86	0	86
Yentna Drainage	Clearwater Creek		5	2012 (25)	200	50	-	25
	Red Creek		6	2012 (29)	200	58	82	111
	Happy River		7	2012 (19)	200	38	S	19
	Red Salmon Creek		8	2012 (12)	200	24	S	12
	Hayes River		9	2012 (5)	200	10	45	50
	Canyon Creek		10	2012 (32)	200	64	75	107
	Talachulitna River		11	1995, 2008, 2010 (180)	200	20	-	180
	Lake Creek	Sunflower Creek	12	2009, 2011 (127)	200	71	S	127
	Kahiltna River	Peters Creek	13	2009, 2010, 2011, 2012 (110)	200	55	-	110

						Sample sizes		
						This project		
Area	Location	Sublocation	Map No.	Year(s) Collected (# archived)	Ideal	Expected (all years)	2013	Total
Susitna Drainage	Chulitna River	Middle Fork	14	2009, 2010, 2011 (182)	200	18	29	<b>211</b>
		East Fork	15		200	200	63	<b>415</b>
		West Fork	16		200		S	
		Honolulu Creek	17		200		31	
		Pass Creek	18		n/a		33	
		Spink Creek	21		200		56	
		Byers Creek	19		200		54	
		Troublesome Creek	20		200		71	
		Tokositna River (Bunco Creek)	22		200		104	
		Tokosina River (Bunco Lake inlet stream)	23		n/a		3	
	Upper Susitna River	Oshetna River	24	2012 (10)	200	50	0	12
		Kosina Creek	25		200		2	
		Watana Creek	26		200		S	
	Middle Susitna River above Devils Canyon	Tsusena Creek	27		200	50	S	12
		Fog Creek	28		200		0	
		Devil Creek	30		200		S	
		Chinook Creek	32		200		S	

Area	Location	Sublocation	Map No.	Year(s) Collected (# archived)	Sample sizes			
					This project			
					Ideal	Expected (all years)	2013	Total
	Middle Susitna River below Devils Canyon	Portage Creek	31	2009, 2010, 2011 (141)	200	59	25	166
		Indian River	33	2012 (1)	200	75	70	71
		Gold Creek	34		200		S	
		Lane Creek	35		200		S	
		Chase Creek	36		200		S	
	Talkeetna River	Prairie Creek	37	1995, 2008 (169)	200	31	33	<b>202</b>
		no name creek #2	40		n/a	100	25	<b>207</b>
		no name creek #1	39		n/a		71	
		upper mainstem	38		200		S	
		Iron Creek	41		200		47	
		Disappointment Creek	42		200		64	
		Sheep River	43		200		S	
		Larson Creek	44		200		S	
		Chunilna Creek (Clear Creek)	45	2009, 2012 (130)	200	65	6	136

Area	Location	Sublocation	Map No.	Year(s) Collected (# archived)	Sample sizes			
					Ideal	Expected (all years)	2013	Total
	Lower Susitna River, upstream of Deshka River	Montana Creek	46	2008, 2009, 2010 (218)	200	0	-	<b>218</b>
		Birch Creek	47		200	50	S	<b>84</b>
		Sheep Creek	48		200		22	
		North Fork Kashwitna River	49		200		12	
		Little Willow Creek	50		200		50	
		Willow Creek	51	1991, 1997, 2005, 2009 (309)	200	0	-	<b>309</b>
	Deshka River	Moose Creek	52	1995, 2012 (103)	200	52	-	103
		Deshka River weir	53	2005 (200)	200	0	-	<b>200</b>
	Alexander Creek	Sucker Creek	54	2011, 2012 (143)	200	57	-	143
Knik Arm	Matanuska River	Kings River	55		200	25	4	16
		Granite Creek	56		200		12	
		Moose Creek	57	1995, 2008, 2009, 2012 (155)	200		-	155
	Eagle River	South Fork	58	2009, 2011, 2012 (73)	200	24	-	73
		Meadow Creek	59	2009 (6)	200	12	-	6
	Ship Creek		60	2009 (311)	200	0	-	<b>311</b>
	Little Susitna River		61	2009, 2010 (125)	200	75	-	125

Area	Location	Sublocation	Map No.	Year(s) Collected (for Archive)	Sample size			
					This project			
					Ideal	Expected (all years)	2013	Total
Juvenile Chinook salmon								
Susitna Drainage	Above Devils Canyon	Oshetna River	24	2012 (35)	200	70	32*	138
		Kosina Creek	25		200		71	
		Fog Creek	28		200		0	
		Cheechako Creek	29		200		-	
Susitna Drainage	Lower River	5 habitat types (100 fish/habitat type times 3 or 4 collections)	n/a		1,600	1,600	8	8

\*29 juvenile Chinook salmon samples acquired by ISR Study 9.5 Fish Distribution and Abundance in the Upper Susitna River

**Table 4-2. Location and sublocation of baseline samples of adult sockeye salmon spawning aggregates for genetic analysis. Sample sizes show number of samples and sample years for collections already in the Gene Conservation Laboratory archives (Archived), number of samples to obtain the ideal archived sample size (Ideal), the anticipated number to be collected over the two years of this project based on past sampling effort and success and information from the Anadromous Waters Catalog and local biologists (Expected), progress made toward sampling targets this year (2013), and the resulting total sample size after combining the amount archived with the new samples (Total). An “S” in the 2013 column indicates that a survey was performed but sampling was not attempted, a “-” indicates that no survey was performed. Some of the expected numbers are for groups of locations. Sampling locations originally not included in the implementation plan have been included, and are indicated by an “n/a” ideal and expected value. New locations that are now included in grouped locations are sharing the expected value for their group. Map numbers (Map No.) correspond to location numbers on Figure 4-1.**

Area	Location	Sublocation	Map No.	Year(s) Collected (# archived)	Sample sizes			
					This project			Total
					Ideal	Expected (all years)	2013	
Susitna River above three rivers confluence	Chulitna River	Middle Fork	2		100	100	0	0
		East Fork	1		100		0	
		Pass Creek	5		n/a	n/a	2	2
		Spink Creek	4	2007, 2008 (126)	100	0	0	<b>126</b>
		Byers Lake	3	1993, 2006, 2007 (243)	100	0	23	<b>266</b>
		(Tokositna River) Sloughs	7		100	100	S	0
		(Tokositna River) Swan Lake	8	2006, 2007, 2009 (109)	100	0	0	<b>109</b>
		no-name creek	6		n/a	n/a	6	6
	Middle Susitna River below Devils Canyon	Portage Creek	9		n/a	100	8	10
		5th of July Creek	10		n/a		2	
		McKenzie Creek	11		100		0	
		Chase Creek	12		100		0	
	Mainstem sloughs above Three Rivers Confluence	sloughs 8A, 11, and 21	13	1995, 1996, 1997 (156)	100	0	80	<b>236</b>
		slough 9	14		n/a		64	64

Area	Location	Sublocation	Map No.	Year(s) Collected (# archived)	Sample sizes			
					This project			Total
					Ideal	Expected (all years)	2013	
Susitna River above three rivers confluence	Talkeetna River	no-name creek	15		n/a	0	1	1
		Stephan Lake	16	1993, 1994, 2007 (346)	100	0	-	<b><u>346</u></b>
		Prairie Creek	17		n/a	0	2	2
		Iron Creek	18		100	50	0	0
		Disappointment Creek	19		n/a	0	11	11
		Sloughs	20	1997 (79)	100	21	0	79
		Sheep River	21	2008 (190)	100	0	S	<b><u>190</u></b>
		Larson Lake - Eastern shore	23	2011 (90)	100	10	S	90
		Larson Creek	22	1992, 1993 (200)	100	0	S	<b><u>200</u></b>
		Larson Lake - outlet stream	24	2011 (126)	100	0	S	<b><u>126</u></b>
		Chunilna Creek	25		100	100	18	18
		Mama and Papa Bear Lakes	26	1997, 2007 (106)	100	0	75	<b><u>181</u></b>
		Fish Creek	27		n/a	0	3	3

**Table 4-3. Location and sublocation of baseline samples of adult chum salmon spawning aggregates for genetic analysis. Sample sizes show number of samples and sample years for collections already in the Gene Conservation Laboratory archives (Archived), number of samples to obtain the ideal archived sample size (Ideal), the anticipated number to be collected over the two years of this project based on past sampling effort and success and information from the Anadromous Waters Catalog and local biologists (Expected), progress made toward sampling targets this year (2013), and the resulting total sample size after combining the amount archived with the new samples (Total). An “S” in the 2013 column indicates that a survey was performed but sampling was not attempted, a “-” indicates that no survey was performed. Some of the expected numbers are for groups of locations. Sampling locations originally not included in the implementation plan have been included, and are indicated by an “n/a” ideal and expected value. New locations that are now included in grouped locations are sharing the expected value for their group. Map numbers (Map No.) correspond to location numbers on Figure 4-2.**

Area	Location	Sublocation	Map No.	Year(s) Collected (# archived)	Sample sizes			
					This project			Total
					Ideal	Expected (all years)	2013	
Susitna River above Three Rivers Confluence	Chulitna River	Middle Fork	1		100		0	
		West Fork	2		100	200	S	43
		Byers Creek	3		100		18	
		Troublesome Creek	4		100		25	
		Spink Creek	5	2007, 2008 (45)	100	55	2	47
		Tokositna River mainstem	6		100	50	S	0
	Middle Susitna River below Devils Canyon	Portage Creek	7		100	100	147	<b>147</b>
		Indian River	8		100	100	123	<b>123</b>
		Gold Creek	9		n/a	n/a	5	5
		sloughs above Three Rivers Confluence	10	1996 (103)	0	0	70	<b>173</b>
		5th of July Creek	11		n/a	n/a	34	34
		4th of July Creek	12		n/a	n/a	56	56
		Lane Creek	13		n/a	n/a	1	1
		Whiskers Creek	14		n/a	n/a	3	3

					Sample sizes			
					This project			
Area	Location	Sublocation	Map No.	Year(s) Collected (# archived)	Ideal	Expected (all years)	2013	Total
	Talkeetna River	upper mainstem	16		100	200	S	1
		Disappointment Creek	17		100		S	
		Sheep River	18		100		S	
		Larson Creek	20		100		S	
		Fish Creek	19		100		1	
		Sloughs	15	1995 (50)	100	50	20	70
		Chunilna Creek	21	1993 (87)	100	13	136	<u>223</u>

**Table 4-4. Location and sublocation of baseline samples of adult coho salmon spawning aggregates for genetic analysis. Sample sizes show number of samples and sample years for collections already in the Gene Conservation Laboratory archives (Archived), number of samples to obtain the ideal archived sample size (Ideal), the anticipated number to be collected over the two years of this project based on past sampling effort and success and information from the Anadromous Waters Catalog and local biologists (Expected), progress made toward sampling targets this year (2013), and the resulting total sample size after combining the amount archived with the new samples (Total). An “S” in the 2013 column indicates that a survey was performed but sampling was not attempted, a “-” indicates that no survey was performed. Some of the expected numbers are for groups of locations. Sampling locations originally not included in the implementation plan have been included, and are indicated by an “n/a” ideal and expected value. New locations that are now included in grouped locations are sharing the expected value for their group. Map numbers (Map No.) correspond to location numbers on Figure 4-3.**

Area	Location	Sublocation	Map No.	Year(s) Collected (# archived)	Sample sizes			
					This project			Total
					Ideal	Expected (all years)	2013	
Susitna River above three rivers confluence	Chulitna River	Middle Fork	2		100		0	
		East Fork	1		100		0	
		Honolulu Creek	3		100	200	0	0
		Byers Creek	4		100		0	
		Troublesome Creek	5		100		0	
		Spink Creek	6	2008 (38)	100	62	0	38
		Tokositna River mainstem	7		100	100	S	0
		Tokositna River (Bunco Creek)	8		100		0	
		Tokositna River (Swan Lake)	9	2009 (20)	100	80	0	20
	Middle Susitna River below Devils Canyon	Portage Creek	10		100		0	
		Indian River	11		100		1	
		Gold Creek	12		100	200	S	1
		McKenzie Creek	13		100		S	
		Lane Creek	14		100		S	
		Sloughs	15		100	75	2	2
		Chase Creek	16		100	75	S	0
		Whiskers Creek	17		100	75	62	62

					Sample sizes			
					This project			
Area	Location	Sublocation	Map No.	Year(s) Collected (# archived)	Ideal	Expected (all years)	2013	Total
Susitna River above three rivers confluence	Talkeetna River	upper mainstem	18	2011 (84)	100	25	S	0
		Prairie Creek	19		100	75	S	0
		Sheep River	20		100	50	S	0
		Larson Lake - outlet	21		100	16	S	84
		Chunilna Creek	22		100	75	2	2
		Fish Creek	23		n/a	n/a	1	1

**Table 4-5. Location and sublocation of baseline samples of adult pink salmon spawning aggregates for genetic analysis. Sample sizes show number of samples and sample years for collections already in the Gene Conservation Laboratory archives (Archived), number of samples to obtain the ideal archived sample size (Ideal), the anticipated number to be collected over the two years of this project based on past sampling effort and success and information from the Anadromous Waters Catalog and local biologists (Expected), progress made toward sampling targets this year (2013), and the resulting total sample size after combining the amount archived with the new samples (Total). An “S” in the 2013 column indicates that a survey was performed but sampling was not attempted, a “-” indicates that no survey was performed. Some of the expected numbers are for groups of locations. Sampling locations originally not included in the implementation plan have been included, and are indicated by an “n/a” ideal and expected value. New locations that are now included in grouped locations are sharing the expected value for their group. Map numbers (Map No.) correspond to location numbers on Figure 4-4.**

Area	Location	Sublocation	Map No.	Year(s) Collected (for Archive)	Sample sizes			
					This project			
					Ideal	Expected (all years)	2013	Total
Susitna River above three rivers confluence	Chulitna River	Middle Fork	1		100	100	0	1
		Spink Creek	3		100		0	
		Troublesome Creek	2		100		0	
		no name creek	4		n/a		1	
	Middle Susitna River below Devils Canyon	Portage Creek	5		100	50	136	<b>136</b>
		Indian River	6		100	100	114	<b>114</b>
		Gold Creek	7		100	50	106	<b>446</b>
		5th of July Creek	8		n/a		2	
		4th of July Creek	9		n/a		107	
		slough 9	10		n/a		116	
		McKenzie Creek	11		100		0	
		Lane Creek	12		100		115	
		Chase Creek	13		100		0	
		Whiskers Creek	14		100		15	

					Sample sizes			
					This project			
Area	Location	Sublocation	Map No.	Year(s) Collected (for Archive)	Ideal	Expected (all years)	2013	Total
	Talkeetna River	upper mainstem	15		100	25	0	0
		Disappointment Creek	16		n/a	0	127	<b><u>127</u></b>
		Sheep River	17		100	25	0	0
		Larson Creek	18		100	100	0	0
		Chunilna Creek	19		100	100	101	<b><u>101</u></b>
		Fish Creek	20		n/a	0	101	<b><u>101</u></b>

**Table 4-6. Resident and non-salmon anadromous fish species targeted for genetic tissue sampling in the Susitna River and samples sizes collected in 2013. Sample collections are reported for the Gene Conservation Laboratory (GCL), interrelated studies (other), and the combined total (N).**

Species	Target sample size (total)	Collection Strata																		Total Collected
		Upper Susitna River			Middle Susitna River above Devils Canyon			Middle Susitna River below Devils Canyon			Lower Susitna River			Talkeetna River			Chulitna River			
		GCL	other studies	N	GCL	other studies	N	GCL	other studies	N	GCL	other studies	N	GCL	other studies	N	GCL	other studies	N	
Blackfish, Alaska	50			0			0			0			0			0			0	0
Burbot	50			0			0	4		4	2	102	104			0			0	108
Dolly Varden	50	1		1	3		3	5		5	4	3	7	35		35			0	51
Eulachon	50			0			0			0		283	283			0			0	283
Grayling, Arctic	50	17		17	21		21	45	14	59	7	4	11	5		5	3		3	116
Lamprey, Arctic*	n/a											9	9							9
Lamprey, Pacific	50			0			0			0			0			0			0	0
Pike, northern	50			0			0			0		16	16			0			0	16
Sculpin, coastrange	50			0			0			0			0			0			0	0
Sculpin, Pacific staghorn	50			0			0			0			0			0			0	0
Sculpin, prickly	50			0			0			0			0			0			0	0
Sculpin, slimy	50	15		15	40	100	140			0		52	52			0			0	207
Stickleback, ninespine	50			0			0			0		7	7			0			0	7

Species	Target sample size (total)	Collection Strata																		Total Collected
		Upper Susitna River			Middle Susitna River above Devils Canyon			Middle Susitna River below Devils Canyon			Lower Susitna River			Talkeetna River			Chulitna River			
		GCL	other studies	N	GCL	other studies	N	GCL	other studies	N	GCL	other studies	N	GCL	other studies	N	GCL	other studies	N	
Stickleback, threespine	50			0			0			0	50	92	142			0			0	142
Sucker, longnose	50			0			0	5		5	1	102	103			0			0	108
Trout, lake	50			0			0			0			0			0			0	0
Trout, rainbow	50			0	1		1	40		40	40	7	47	19		19	23		2 3	130
Whitefish, Bering cisco	50			0			0			0			0			0			0	0
Whitefish, humpback	50	3		3			0			0			0			0			0	3
Whitefish, lake	50			0			0			0			0			0			0	0
Whitefish, round	50	2		2			0	57	9	66			0	1		1	6		6	75
* Collected, but not on original list of target species																				

**Table 4-7. Summary of survey flights conducted during 2013. Surveys were performed throughout the summer of 2013 in order to determine potential sampling locations for five salmon species (Chinook, sockeye, pink, chum, and coho salmon). X's indicate the occurrence of a survey flight in a given collection strata (Figure 3-1) on a certain date. Survey flight number 17 shows no X's because the survey was cancelled due to poor survey conditions.**

Survey #	Date	Collection strata								
		Upper Susitna River	Middle Susitna above Devils Canyon	Middle Susitna below Devils Canyon	Lower Susitna River	Talkeetna River	Chulitna River	West Side Cook Inlet	Yentna Drainage	Knik Arm
1	6/11/2013	X	X	X			X			X
2	7/8/2013			X	X	X				
3	7/9/2013	X	X	X			X			
5	7/15/2013	X				X				X
6	7/16/2013			X			X			
7	7/17/2013								X	
8	7/22/2013	X	X	X		X				
9	7/23/2013				X		X			
10	7/24/2013								X	
11	7/29/2013	X	X	X		X				
12	7/30/2013				X		X			
13	8/5/2013	X				X	X			
14	8/6/2013		X	X	X	X	X			
15	8/12/2013					X				
16	8/13/2013		X	X			X			
17	8/19/2013									
18	8/26/2013				X					X
19	9/15/2013			X			X			

**Table 4-8. Genetic sampling effort through time by river area for adult salmon species in 2013. Salmon species sampled are reported by week and strata. X's indicate where sampling occurred in each week of the Project field season for all salmon species, and for sampling locations where Chinook salmon were the only target species. Species sampled: Chinook (K), sockeye (S), pink (P), chum (Ch), and coho (Co) salmon. Sampling occurred from 6/8/2013 through 9/15/2013.**

Week of	Species sampled	Collection Strata							
		Area sampled (all salmon species)				Area sampled (Chinook salmon only)			
		Talkeetna	Chulitna	Middle Susitna below Devils Canyon		Lower Susitna	Middle Susitna above Devils Canyon	Yentna	Knik West
6/8-25/2013	K								x
6/24/2013	K					x			x
7/1/2013	K	x				x			x
7/8/2013	K			x		x			x
7/15/2013	K	x	x						x
7/22/2013	K	x	x				x	x	
7/29/2013	K, S, Ch, P, Co,	x	x	x			x		
8/5/2013	K,S, Ch, P,Co	x	x	x			x		
8/12/2013	K, S, Ch, P, Co	x	x	x			x		
8/19/2013	S, Ch, P	x		x					
8/26/2013	*								
9/2/2013	*								
9/9/2013	*								

\* Sampling efforts disrupted by adverse weather conditions.

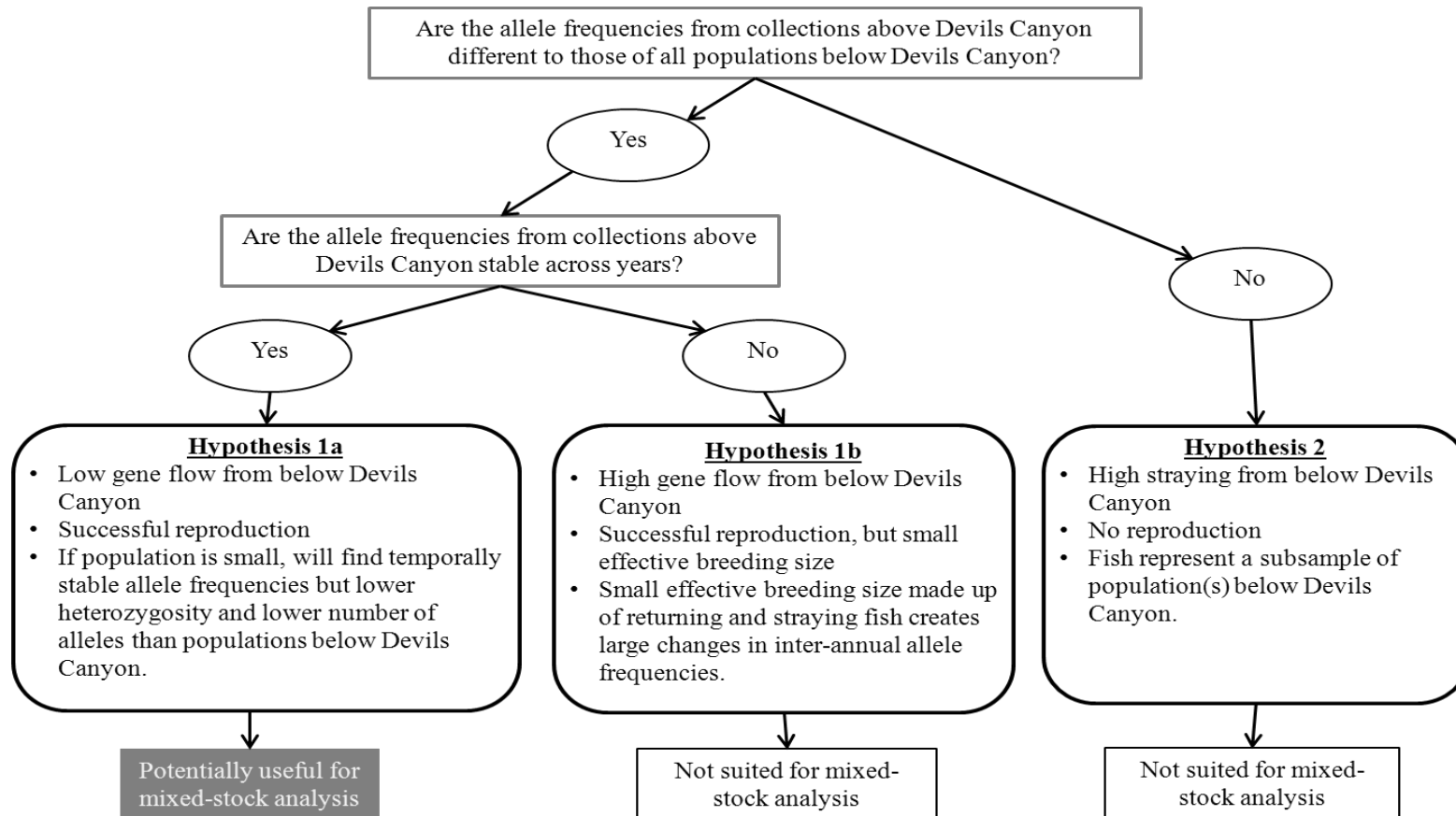
**Table 4-9. Juvenile Chinook salmon tissue collections across five habitat types in the Lower Susitna River, through September 15, 2013. Collection numbers of juvenile Chinook salmon tissues are reported for 16 collection sites over 5 different habitat types (main channel, backwater, braid, channel edge, and slough) in the Lower Susitna River. Totals per stratum are reported (totals).**

DATE	Habitat Type															
	Main channel			Braid			Channel edge				Slough			Backwater		
	collection site number			collection site number			collection site number				collection site number			collection site number		
	1	2	3	4	5	6	7	8	9	10	11	12	13	14	15	16
7/5/2013											8					
Totals:											8					

**Table 4-10. Metadata and location of Chinook salmon samples collected above Devils Canyon. Length (in millimeters) and sex were determined for Chinook salmon sampled above Devils Canyon on August 6, 2013. Creek name, latitude, and longitude are also reported for these data.**

Fish #	Date	Length	Sex	Creek	Latitude/Longitude
1	8/6/2013	980	M	Kosina	62.701/ -147.986
2	8/6/2013	575	F	Kosina	62.633/ -148.031

## 10. FIGURES



**Figure 2-1. A generalized flow chart to distinguish among hypotheses of population structure for Chinook salmon collected over spawning habitat above Devils Canyon in the Middle and Upper Susitna River. Only a self-sustaining population (Hypothesis 1a) will potentially result in genetic variation suitable for mixed-stock analysis for estimating the proportion of juvenile Chinook salmon mixtures collected in the Middle and Lower Susitna River that originate from above Devils Canyon.**

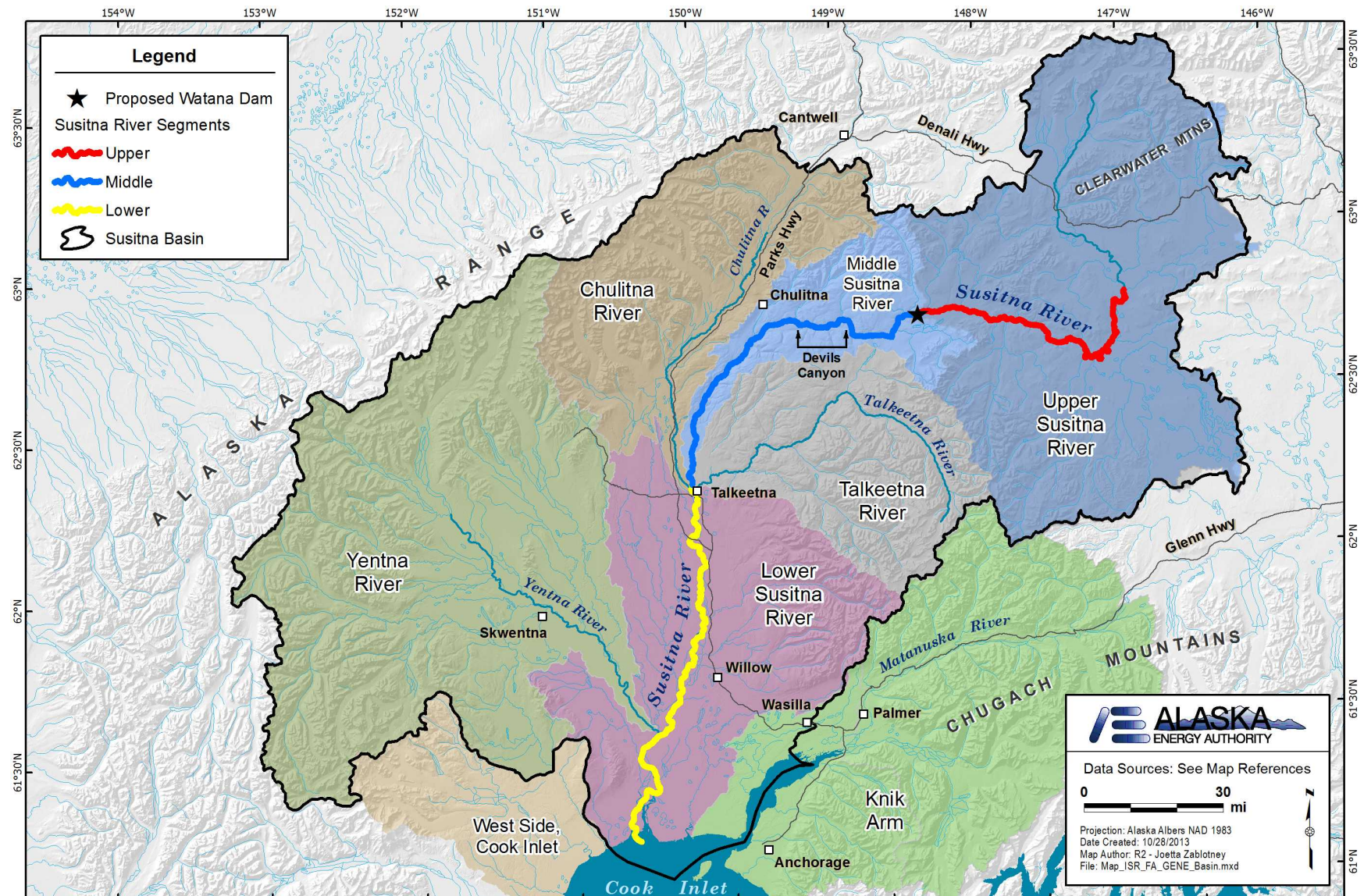


Figure 3-1. Collection strata for samples collected for genetic archive and/or analysis.

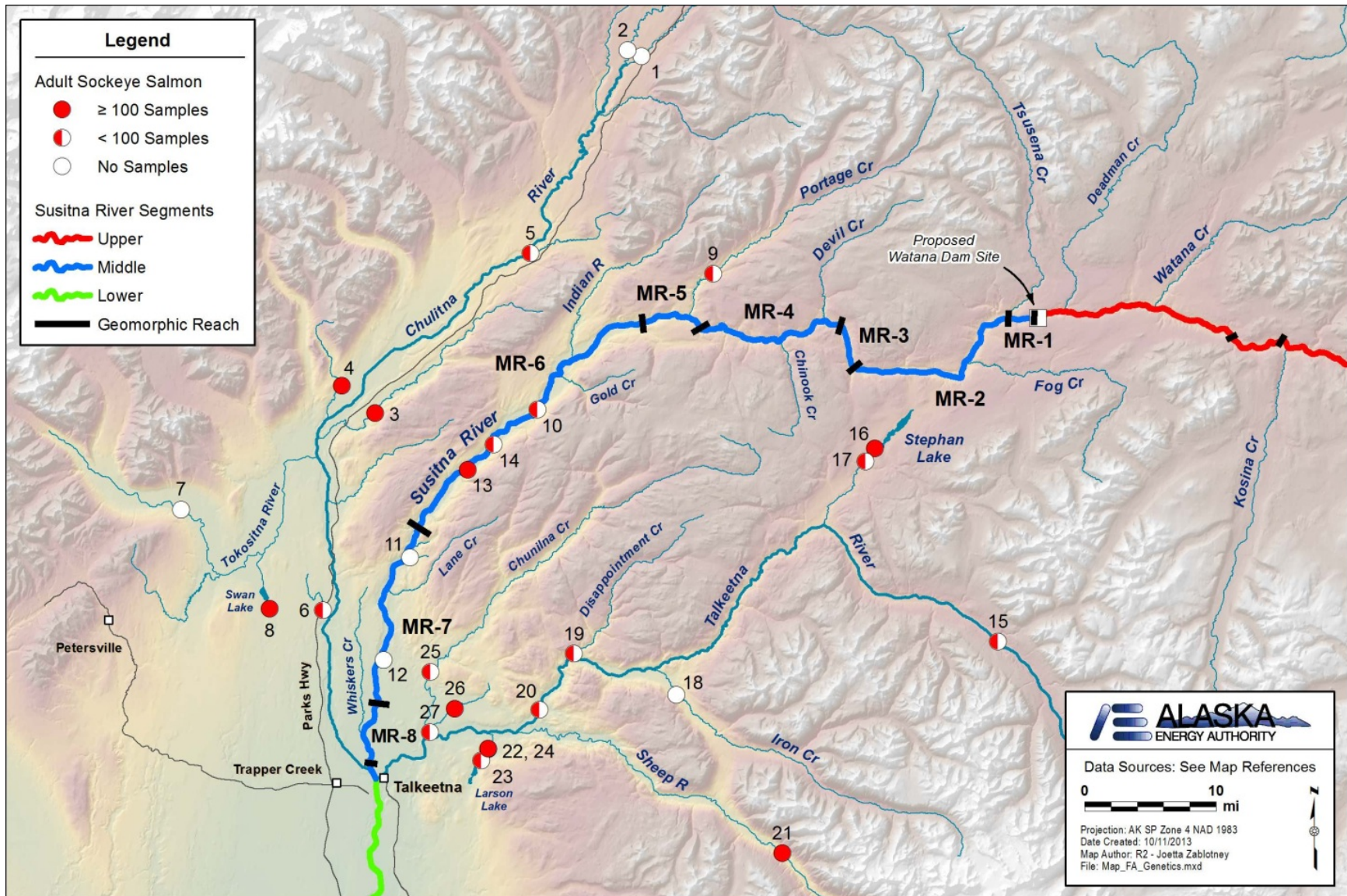


Figure 4-1. Baseline sampling locations for adult sockeye salmon. Circles indicate the number of samples in the Gene Conservation Laboratory archives. Numbers correspond to map numbers on Table 4-3.

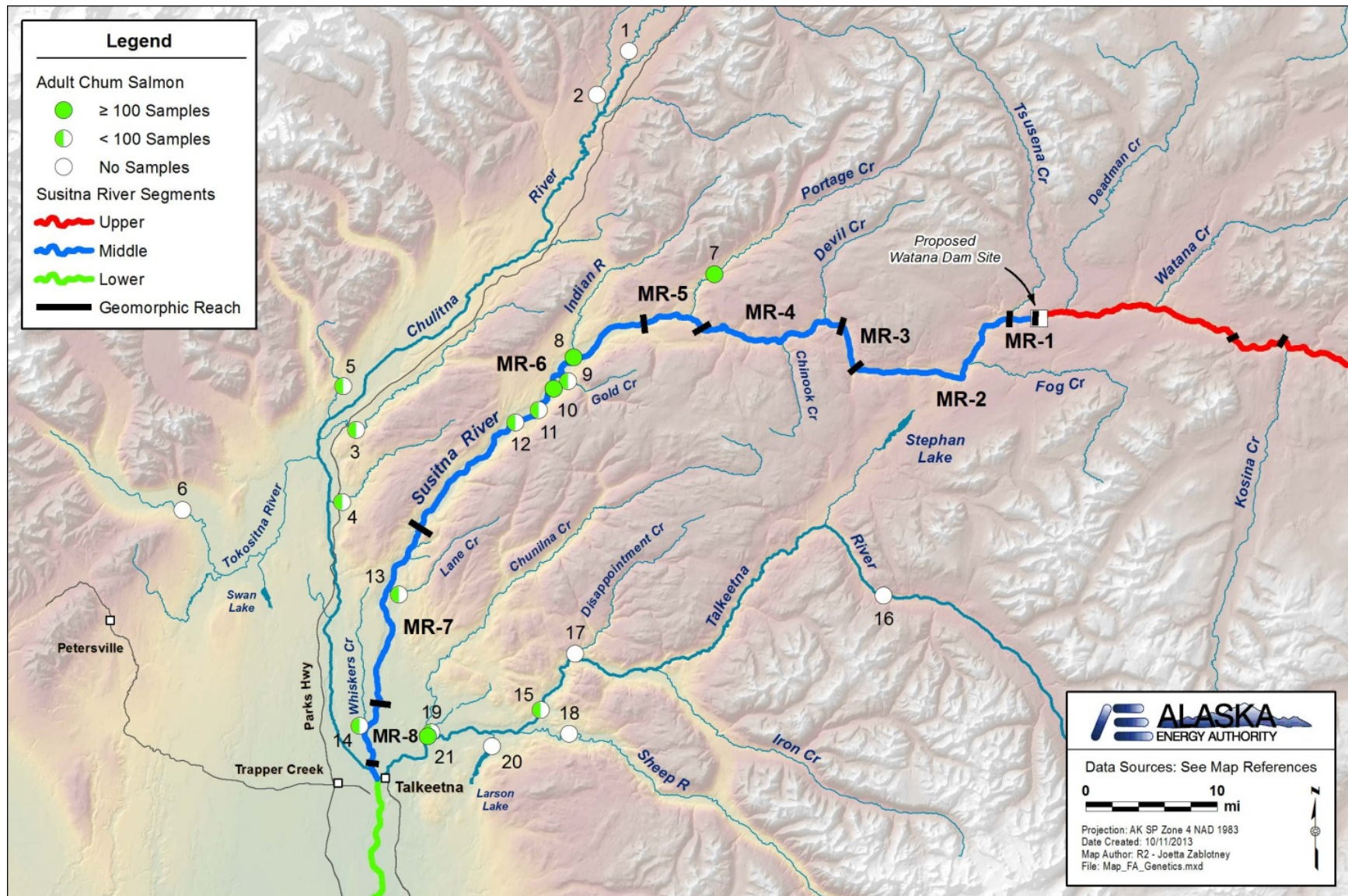


Figure 4-2. Baseline sampling locations for adult chum salmon. Circles indicate the number of samples in the Gene Conservation Laboratory archives. Numbers correspond to map numbers on Table 4-4.

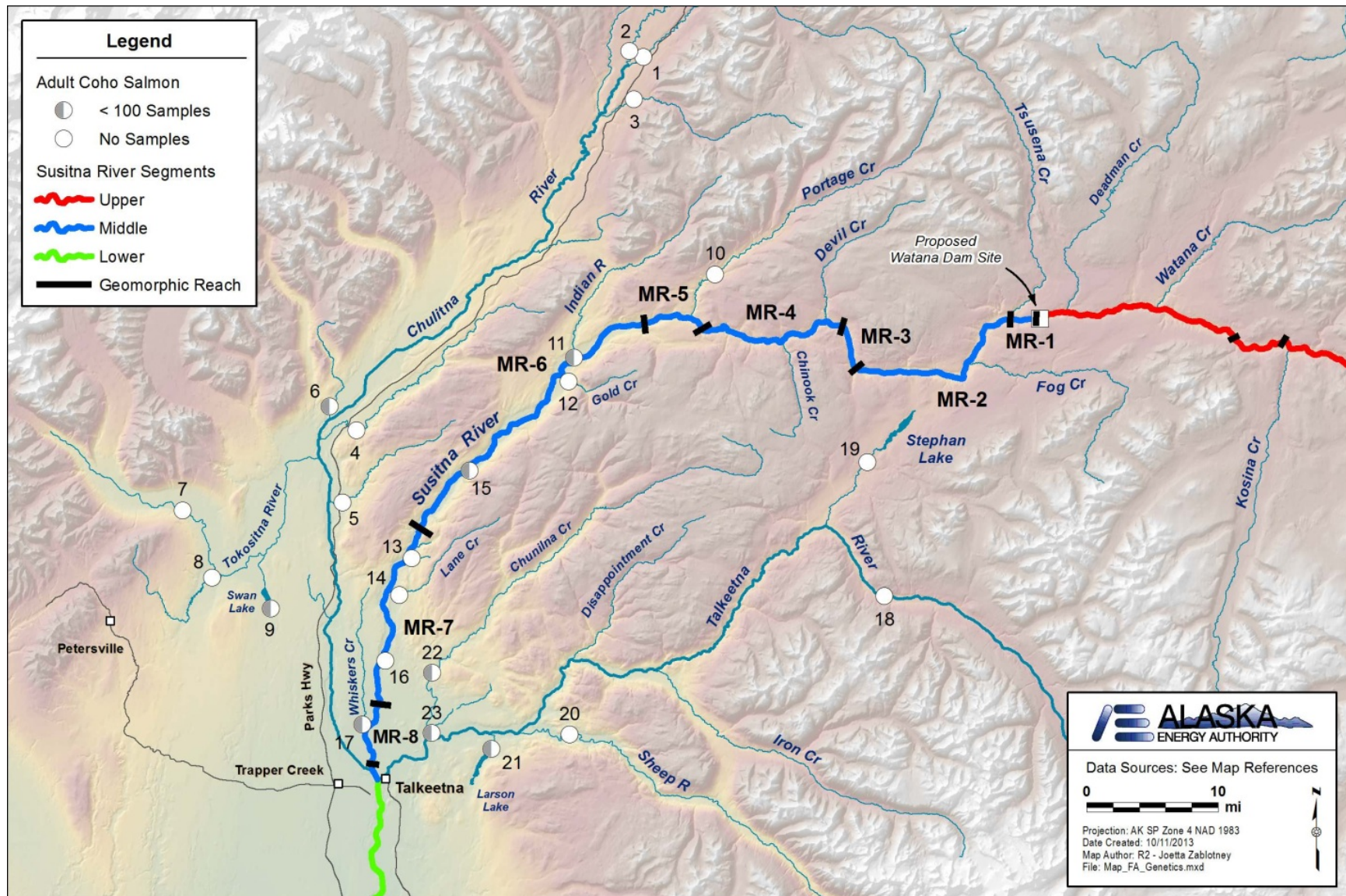


Figure 4-3. Baseline sampling locations for adult coho salmon. Circles indicate the number of samples in the Gene Conservation Laboratory archives. Numbers correspond to map numbers on Table 4-5.

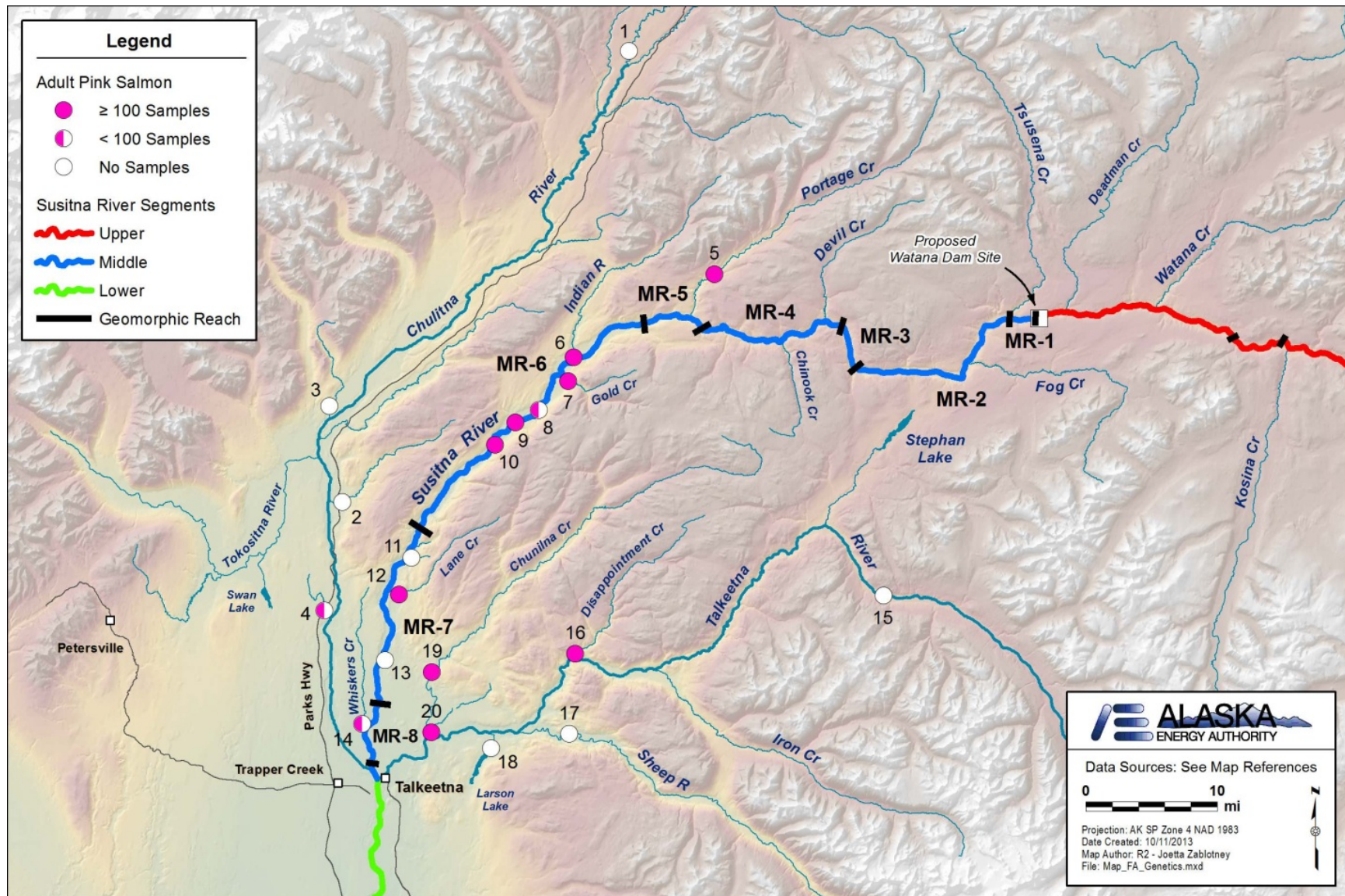


Figure 4-4. Baseline sampling locations for adult pink salmon. Circles indicate the number of samples in the Gene Conservation Laboratory archives. Numbers correspond to map numbers on Table 4-6.

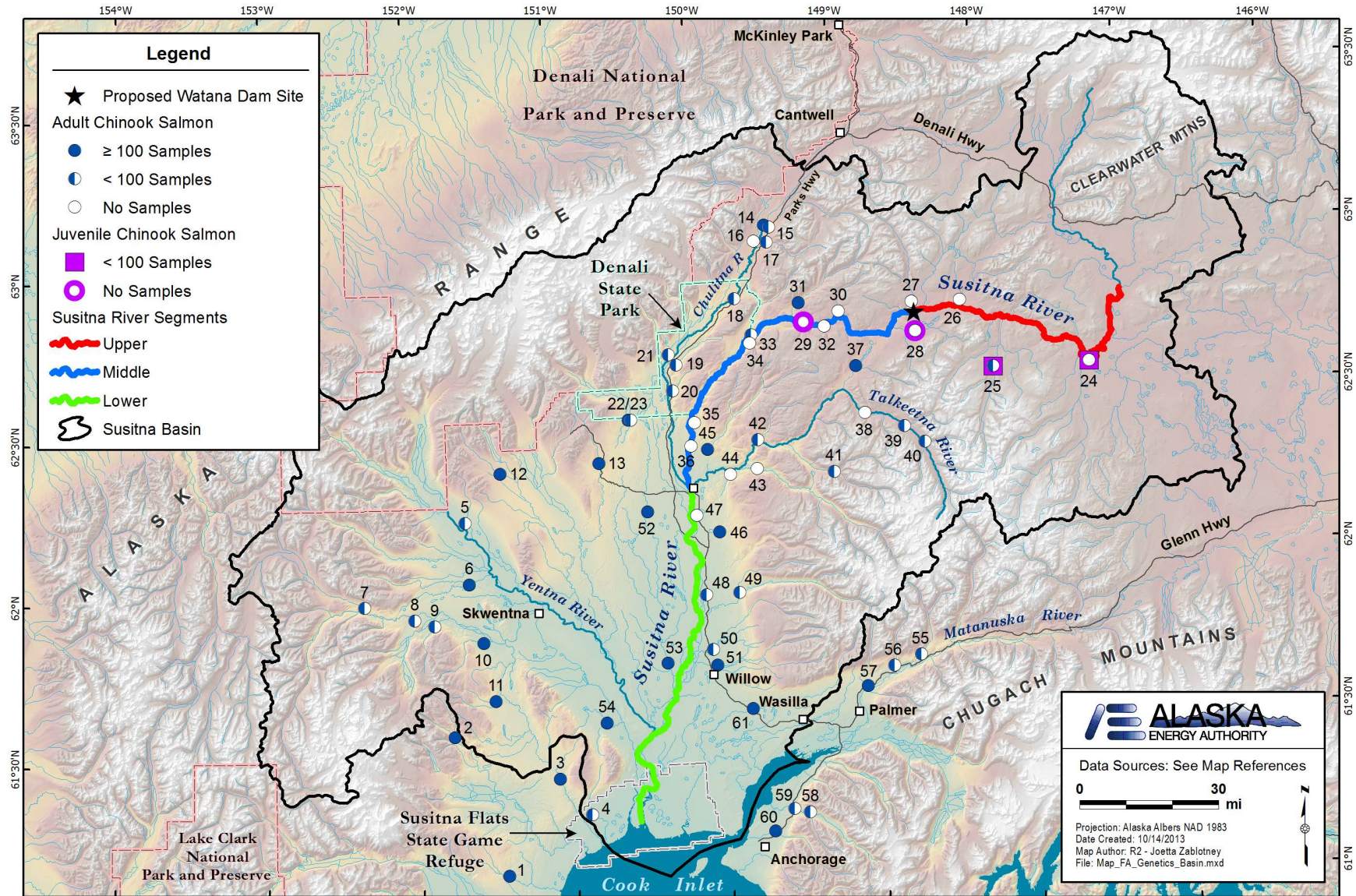


Figure 4-5. Baseline sampling locations for adult and juvenile (inset) Chinook salmon. Circles indicate the number of samples in the Gene Conservation Laboratory archives. Numbers correspond to map numbers in Table 4-2. The Lower Susitna River (below project river mile (PRM) 102.4), Middle River (RM 102.4-187.1) and Upper River (RM 187.1-235.1) segments are highlighted with the proposed dam at PRM 187.1.

## PART A - APPENDIX A: TEMPLATE FOR COLLECTION TRIP REPORTS

## LOKI Trip Report Form

Trip Start Date	Trip End Date	Trip Name
Charter		Transportation
Lodging	Report Date	Report Author

Waypoint Name:		Potential Access:	
camp/survey/collection	latitude	longitude	
waypoint comments			
Waypoint Name:		Potential Access:	
camp/survey/collection	latitude	longitude	
waypoint comments			
Waypoint Name:		Potential Access:	
camp/survey/collection	latitude	longitude	
waypoint comments			
Waypoint Name:		Potential Access:	
camp/survey/collection	latitude	longitude	
waypoint comments			
Waypoint Name:		Potential Access:	
camp/survey/collection	latitude	longitude	
waypoint comments			
Waypoint Name:		Potential Access:	
camp/survey/collection	latitude	longitude	
waypoint comments			
Waypoint Name:		Potential Access:	

[illegible]