

Susitna-Watana Hydroelectric Project Document ARLIS Uniform Cover Page

Title: Terrestrial furbearer abundance and habitat use, Study plan Section 10.10 : Initial study report -- Part B: Supplemental information (and errata) to Part A (February 3, 2014 Draft Initial Study Report)		SuWa 223
Author(s) – Personal:		
Author(s) – Corporate: University of Alaska Fairbanks, Institute of Arctic Biology		
AEA-identified category, if specified: Initial study report		
AEA-identified series, if specified:		
Series (ARLIS-assigned report number): Susitna-Watana Hydroelectric Project document number 223		Existing numbers on document:
Published by: [Anchorage : Alaska Energy Authority, 2014]		Date published: June 2014
Published for: Alaska Energy Authority		Date or date range of report:
Volume and/or Part numbers:		Final or Draft status, as indicated:
Document type:		Pagination: 3 p.
Related work(s): The following parts of Section 10.10 appear in separate files: Part A ; Part B ; Part C.		Pages added/changed by ARLIS:
Notes:		

All reports in the Susitna-Watana Hydroelectric Project Document series include an ARLIS-produced cover page and an ARLIS-assigned number for uniformity and citability. All reports are posted online at <http://www.arlis.org/resources/susitna-watana/>



**Susitna-Watana Hydroelectric Project
(FERC No. 14241)**

**Terrestrial Furbearer Abundance and Habitat Use
Study Plan Section 10.10**

**Initial Study Report
Part B: Supplemental Information (and Errata) to
Part A (February 3, 2014 Draft Initial Study Report)**

Prepared for

Alaska Energy Authority



SUSITNA-WATANA HYDRO

Clean, reliable energy for the next 100 years.

Prepared by

University of Alaska Fairbanks, Institute of Arctic Biology

June 2014

**PART B: SUPPLEMENTAL INFORMATION (AND ERRATA) TO PART A
(FEBRUARY 3, 2014 DRAFT INITIAL STUDY REPORT)**

Part A Reference	Description
Passim	As explained in the ISR Overview and depicted in Figure 1, following release of the draft ISR in February 2014, AEA added a new north-south transmission and access corridor alignment from the dam site to the Denali Highway. This new alignment is referred to as the Denali East Option. For clarity, the north-south alignment studied to date (and historically referred to as the Denali Corridor) is now referred to as the Denali West Option. Hence, all references in Part A to the “Denali Corridor” are referencing the newly designated Denali West Option.
ISR Study 10.10, Part A, List of Tables, Page ii	List and order are incorrect due to numbering errors noted below.
ISR Study 10.10, Part A, List of Figures, Page ii	Title for Figure 4.1-1 is incorrect due to figure update provided below.
ISR Study 10.10, Part A, Tables 5.2-1 and 5.2-2, Page 9	Table numbers are correct but tables are out of sequence due to the table numbering errors noted below (next four rows). These two tables should follow the four tables for which corrected numbers are given below.
ISR Study 10.10, Part A, Table 7.3-1, Page 9	Table number is incorrect and does not match text. Correct number is Table 5.1-1 (table caption wording is correct).
ISR Study 10.10, Part A, Table 7.3-2, Page 10	Table number is incorrect and does not match text. Correct number is Table 5.1-2 (table caption wording is correct).
ISR Study 10.10, Part A, Table 7.3-3, Page 10	Table number is incorrect and does not match text. Correct number is Table 5.1-3 (table caption wording is correct).
ISR Study 10.10, Part A, Table 7.3-4, Page 11	Table number is incorrect and does not match text. Correct number is Table 5.1-4 (table caption wording is correct).

ISR Study 10.10, Part A, Fig. 4.1-1, Page 14	In response to a request from David Tessler (ADF&G Division of Wildlife Conservation) for supplemental information in the wildlife technical meeting on March 6, 2014 (see http://www.susitna-watanahydro.org/wp-content/uploads/2014/03/2014-03-06TT_Wildlife_MeetingNotes.pdf), the locations of hair-snag sites for lynx and marten in winter 2013 have been added to Figure 4.1-1. The revised figure follows this table.
--	---

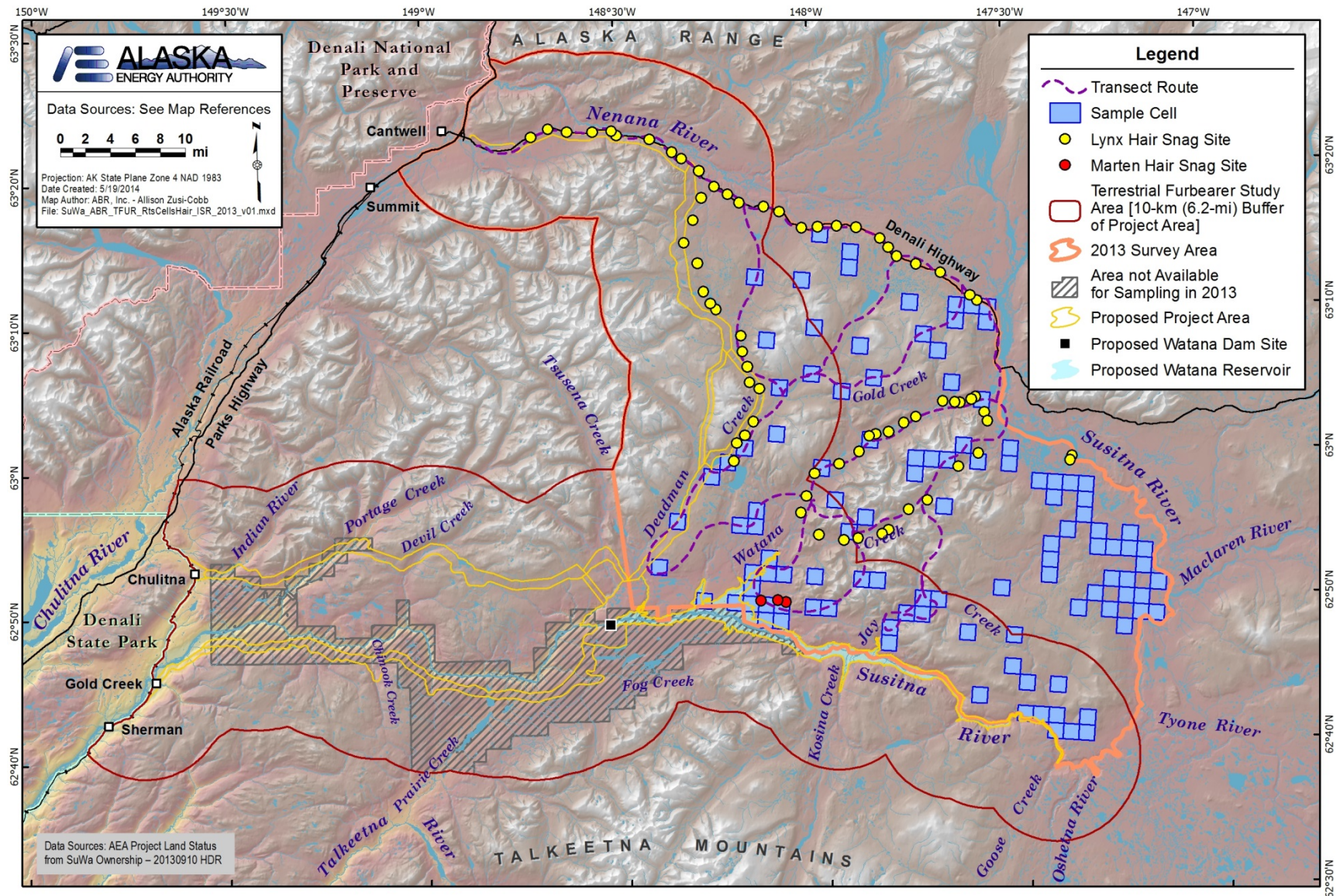


Figure 4.1-1. Location of Ground-based Transects, Occupancy Survey Cells, and Hair-snag Sites Sampled in Winter 2013.