

APPENDIX B. 1983 MIDDLE SUSITNA RIVER SEGMENT GEOMORPHIC FEATURES

**Susitna-Watana Hydroelectric Project
(FERC No. 14241)**

Geomorphology Study (6.5)

**Mapping of Geomorphic Features and Turnover
within the Middle and Lower Susitna River Segments
from 1950s, 1980s, and Current Aerials
Technical Memorandum**

Prepared for

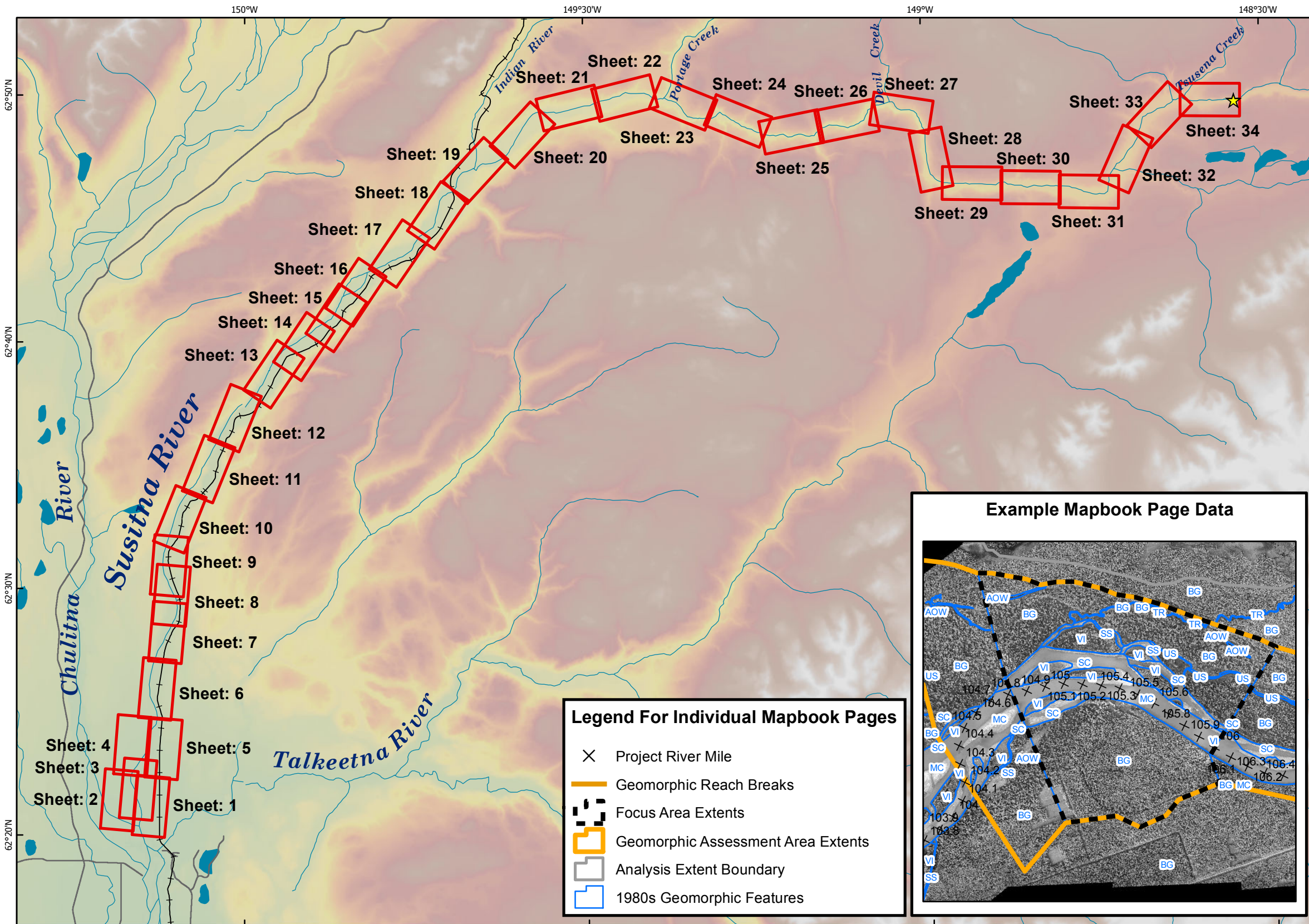
Alaska Energy Authority



Prepared by

Tetra Tech Inc.

September 2014



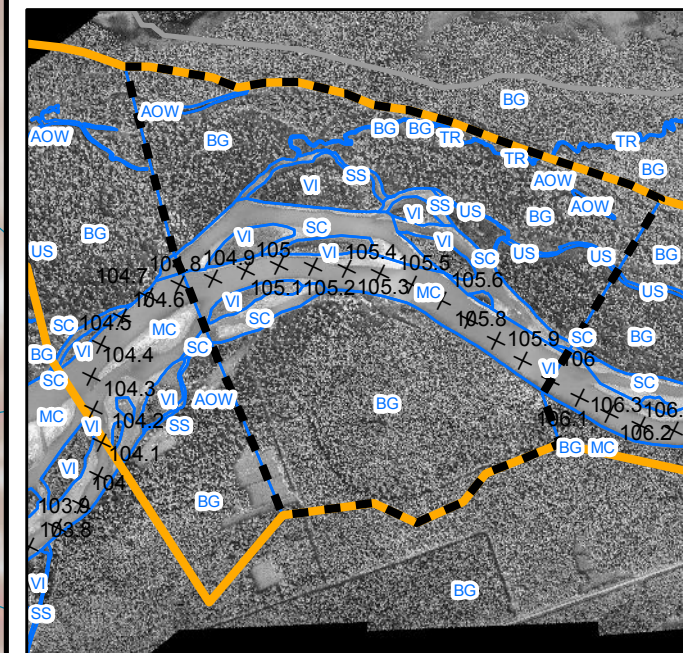
MIDDLE SUSITNA RIVER SEGMENT 1983 GEOMORPHIC FEATURES

Legend

- ★ Proposed Watana Dam Site
- Sheet Extents
- Roads
- Railroads
- Rivers and Streams
- Waterbodies

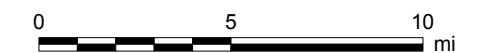
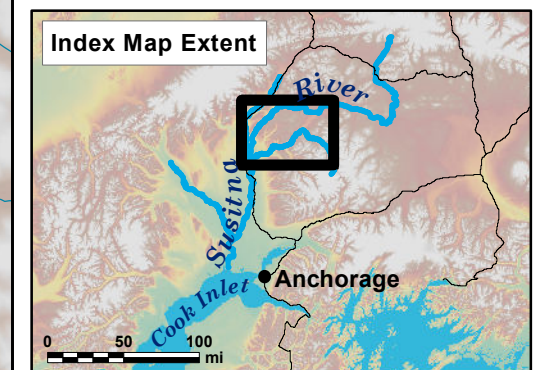
Data Sources: See Map References

Example Mapbook Page Data



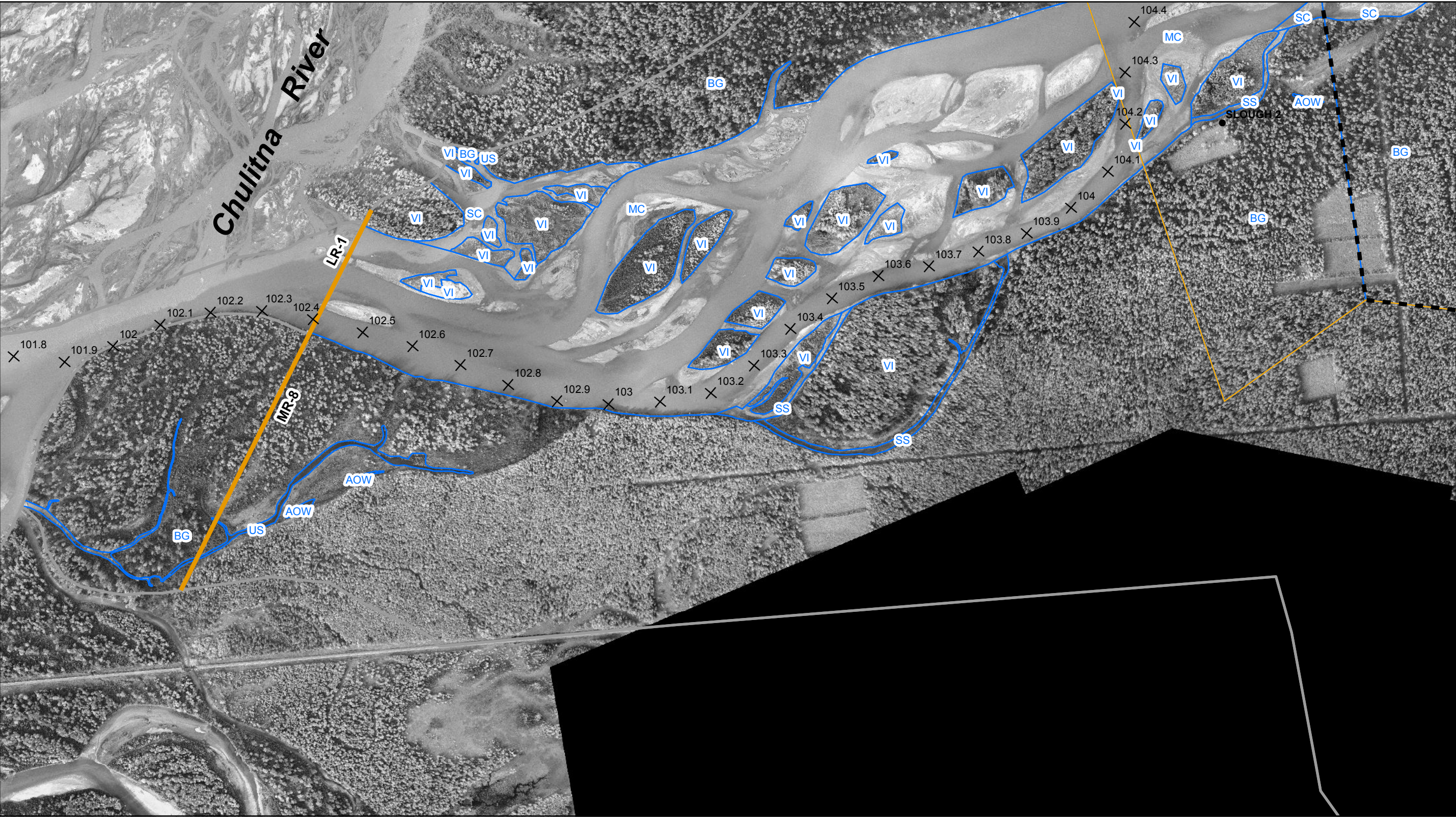
Legend For Individual Mapbook Pages

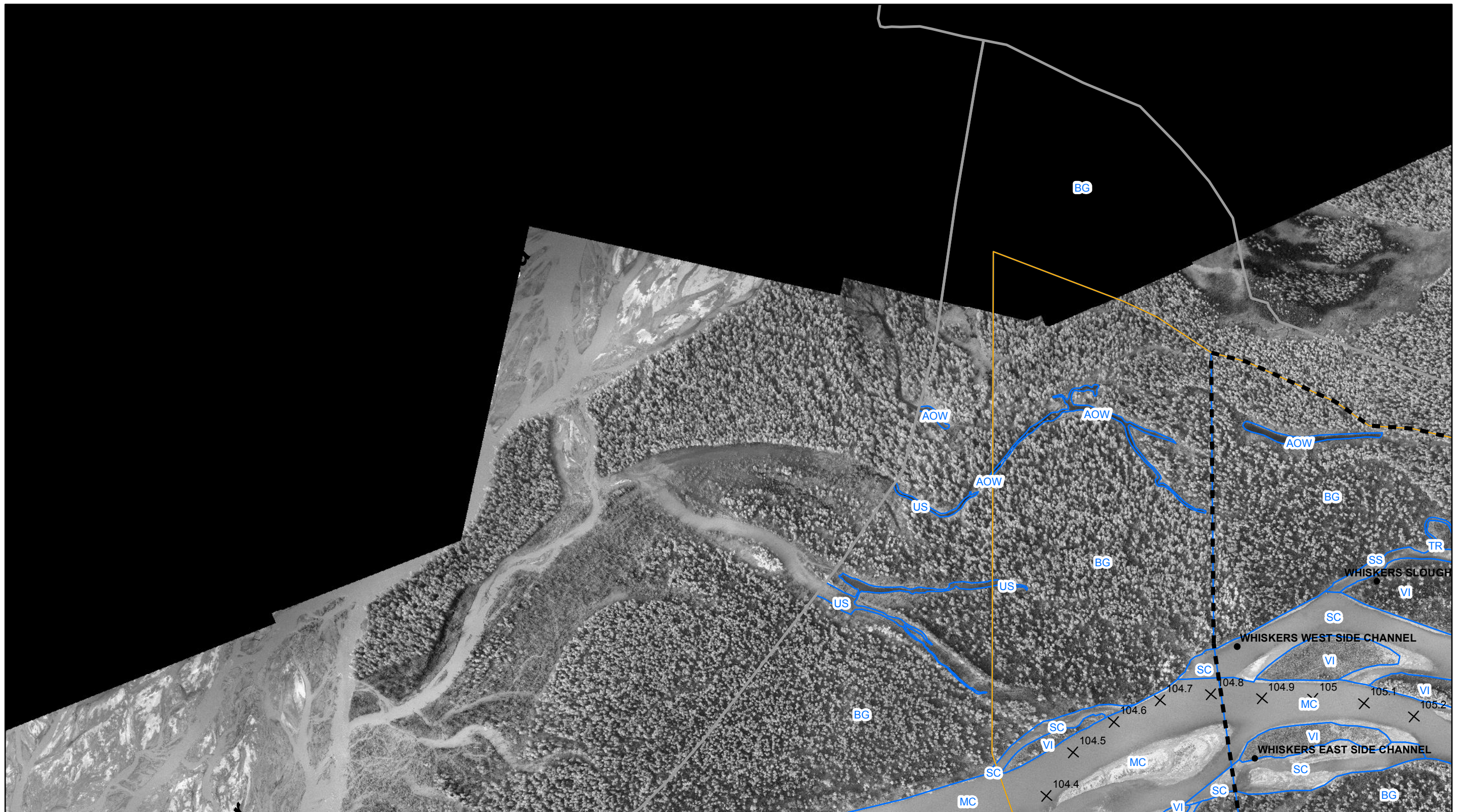
- × Project River Mile
- Geomorphic Reach Breaks
- Focus Area Extents
- Geomorphic Assessment Area Extents
- Analysis Extent Boundary
- 1980s Geomorphic Features

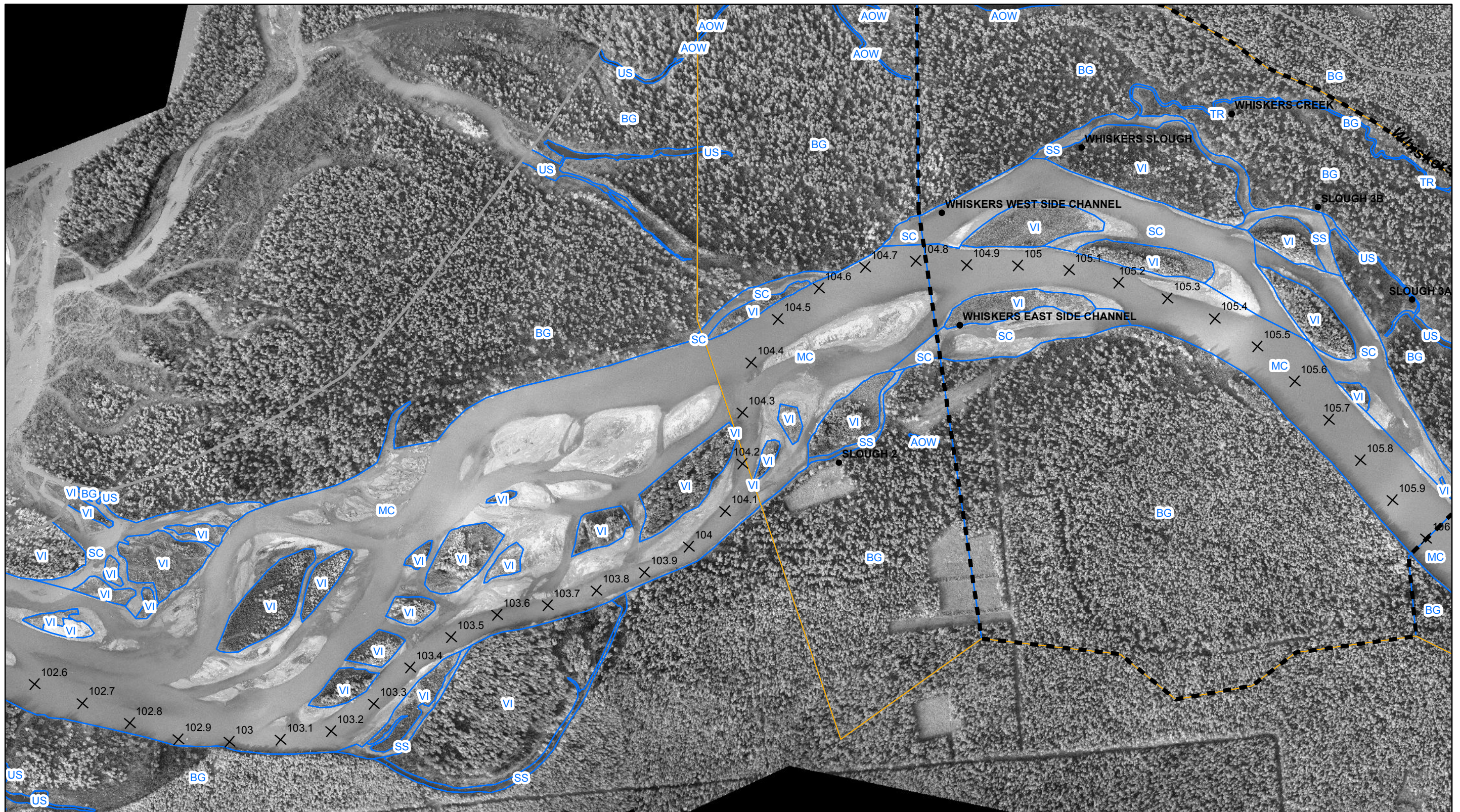


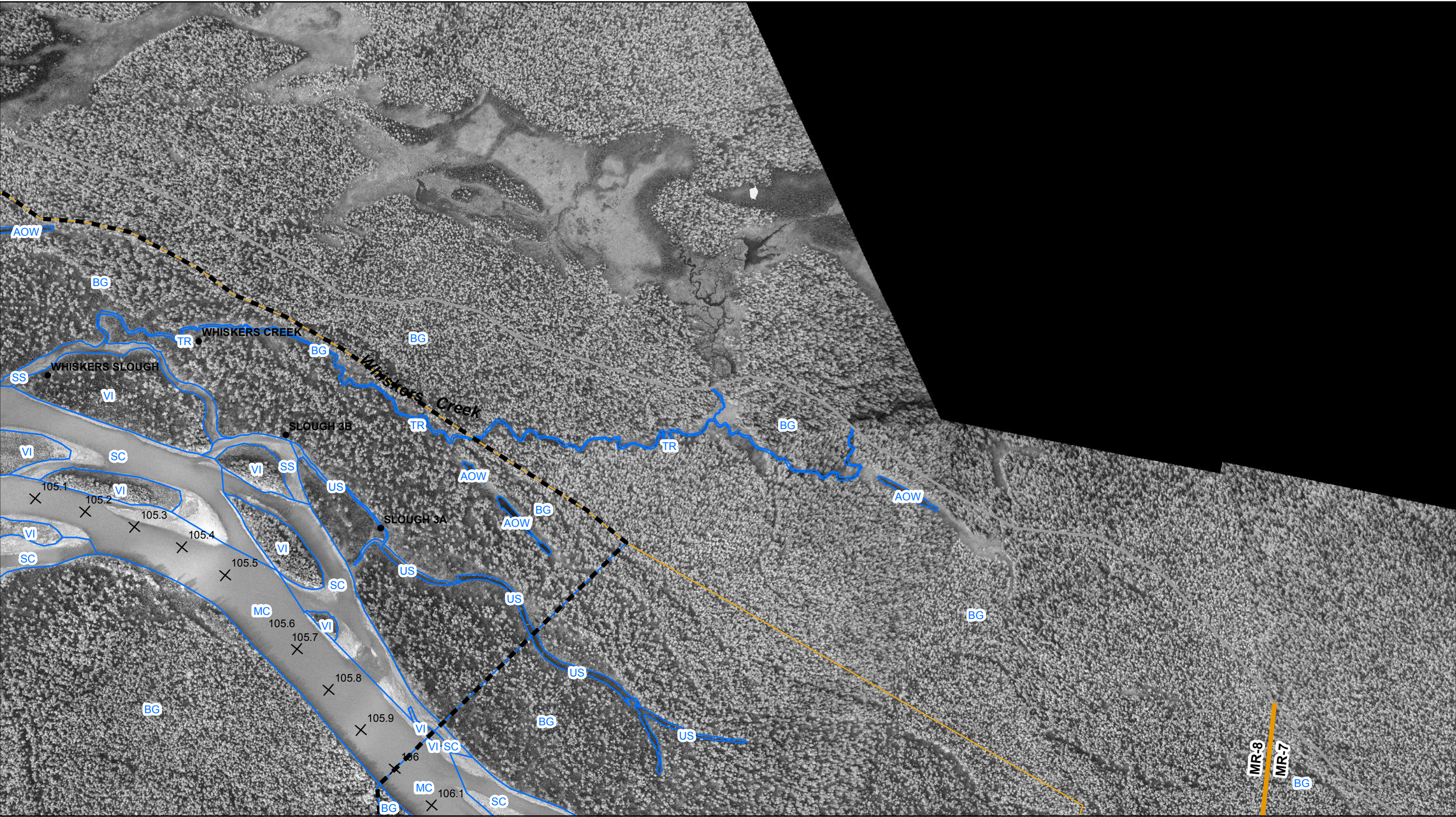
Projection: NAD83 State Plane Alaska 4 FIPS 5004 (ft)
Date Created: 8/21/2014
Map Author: Tetra Tech
File: GeomFeat_1980s_MR_20140423_Cover.mxd

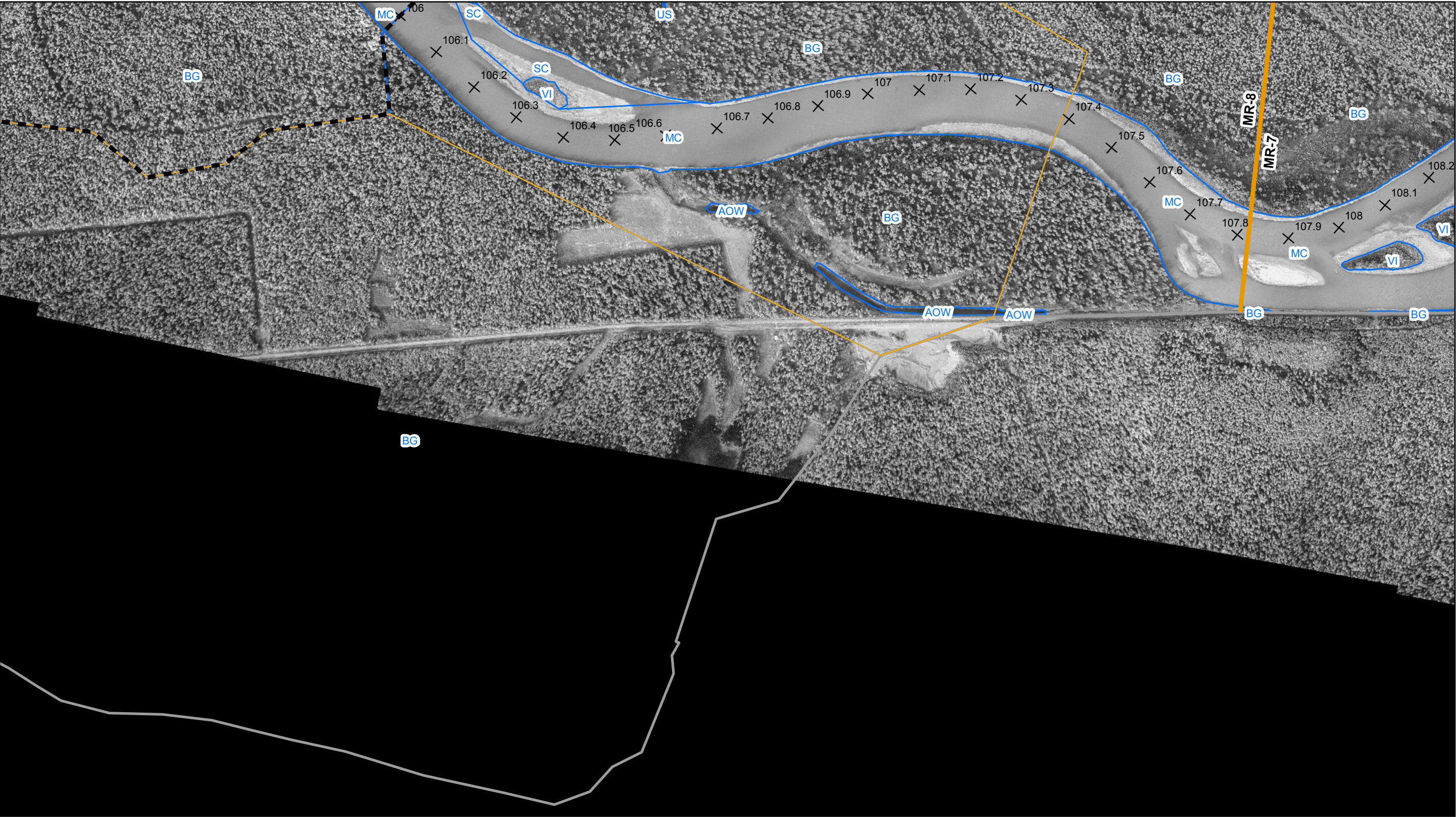


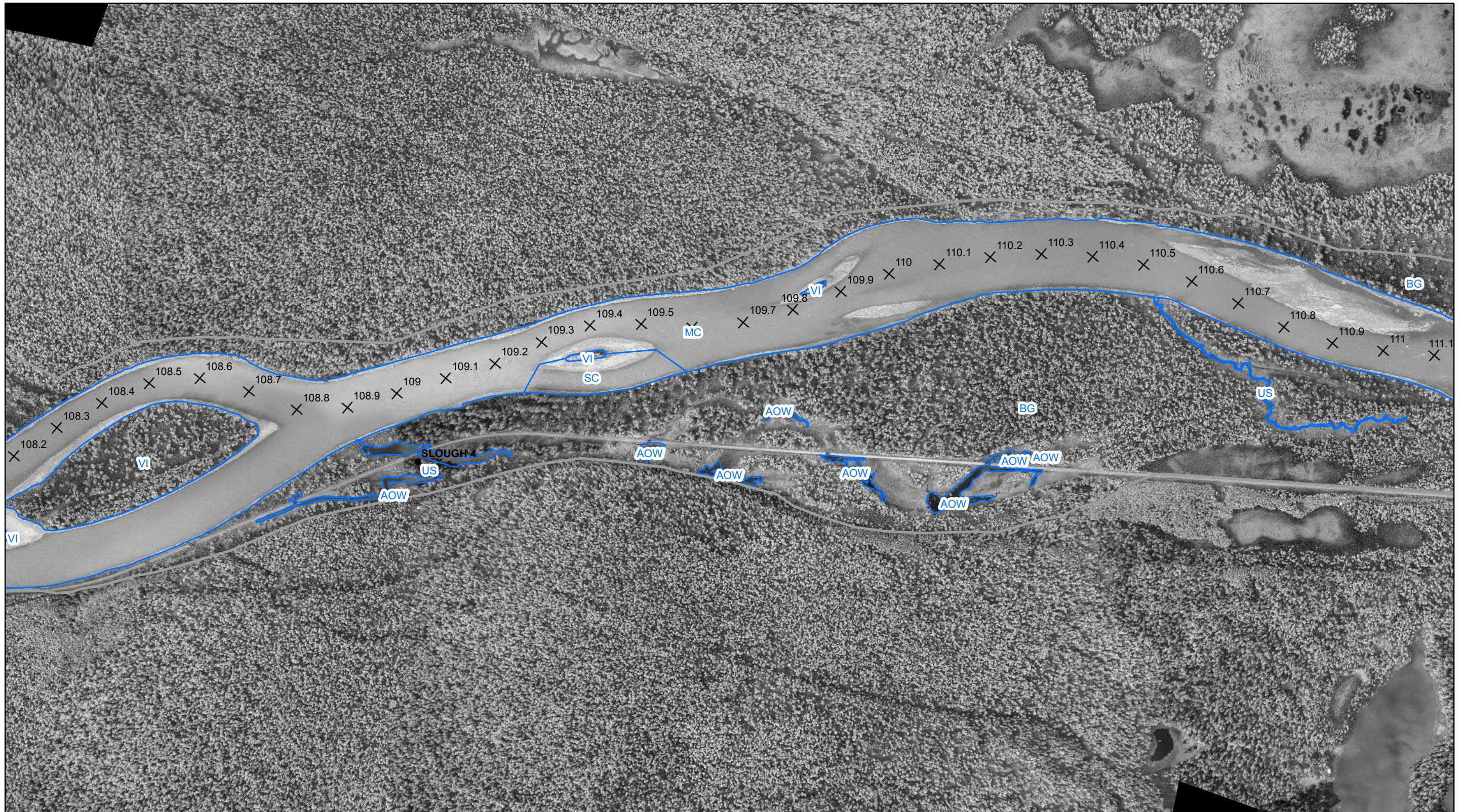


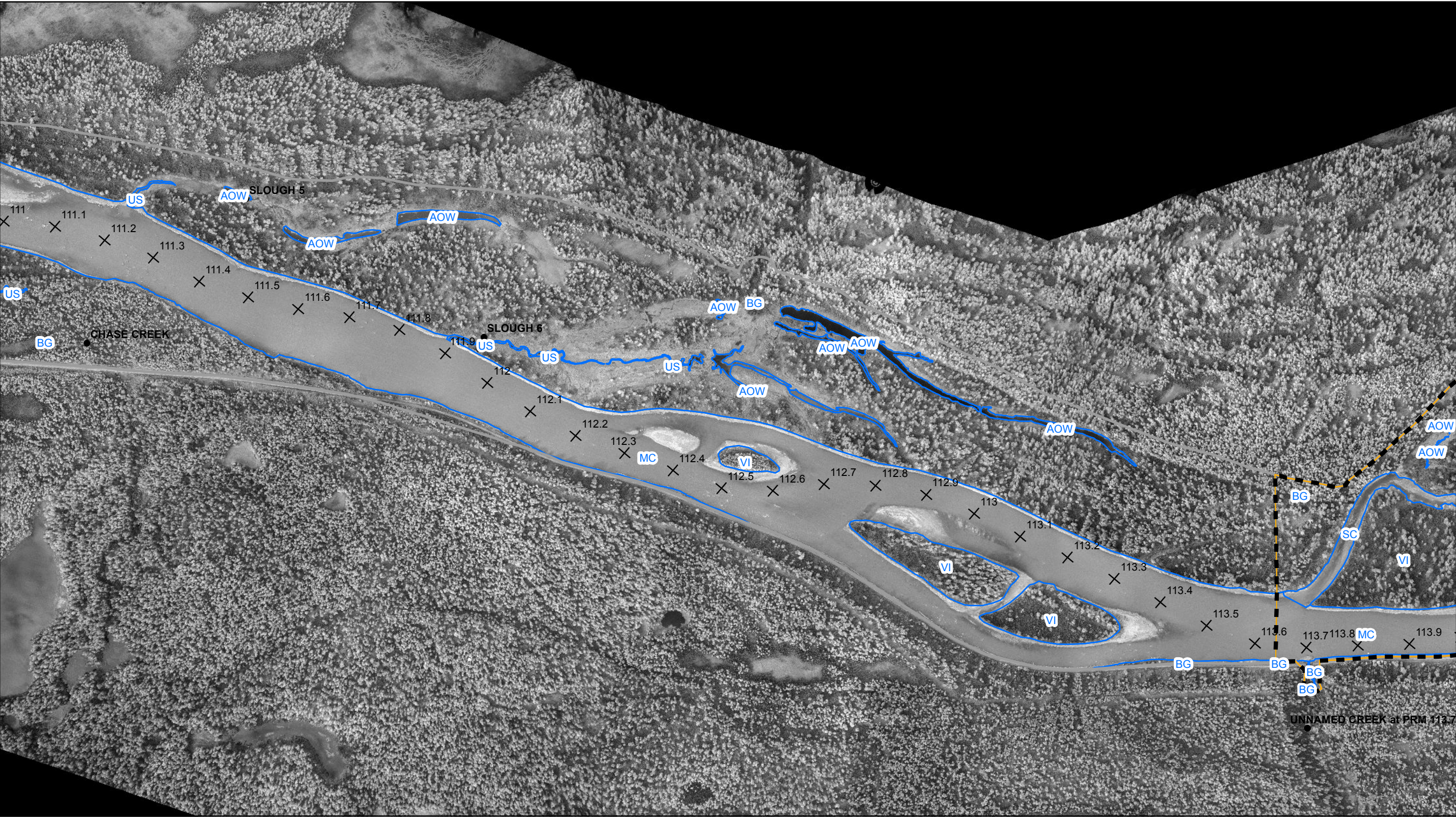


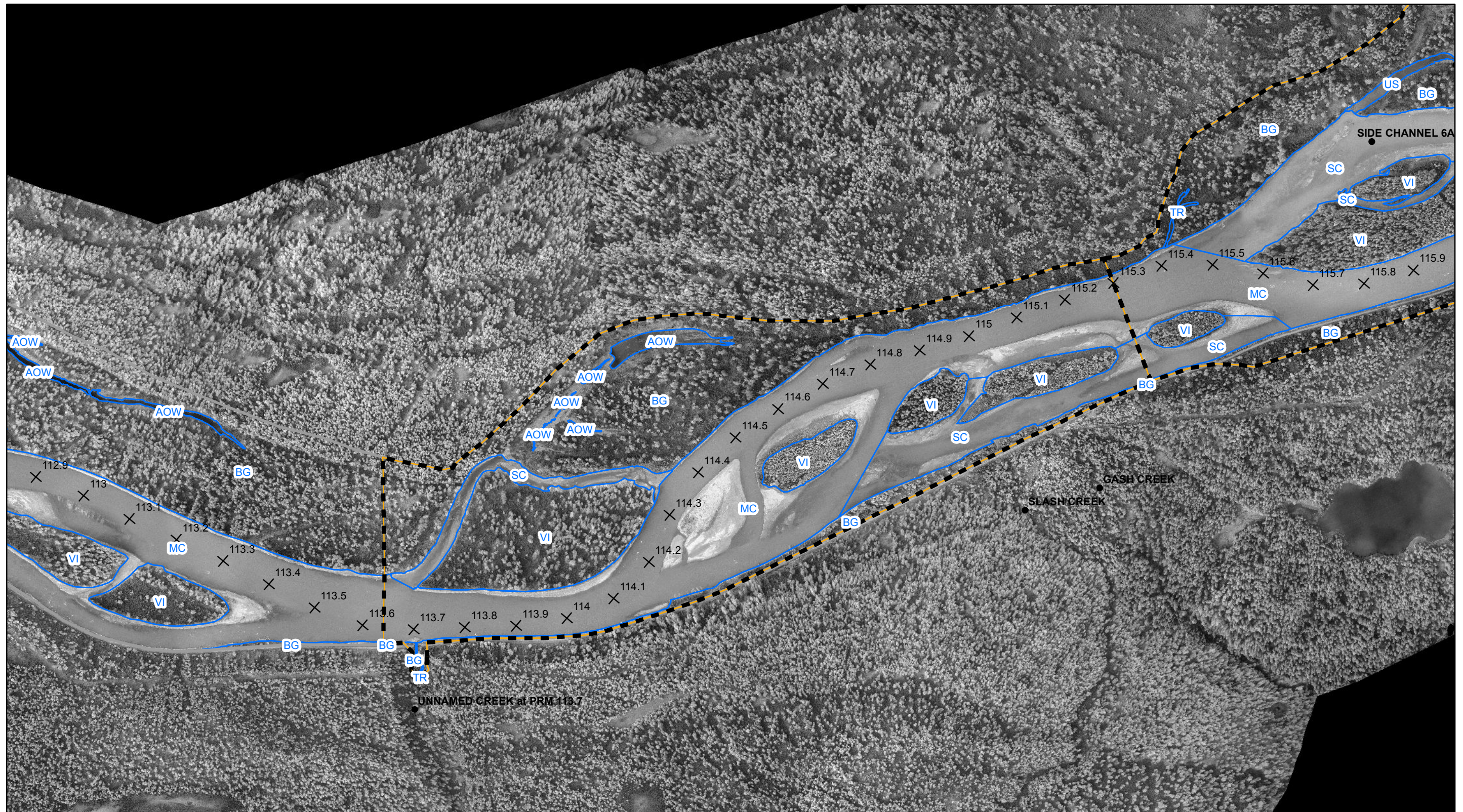


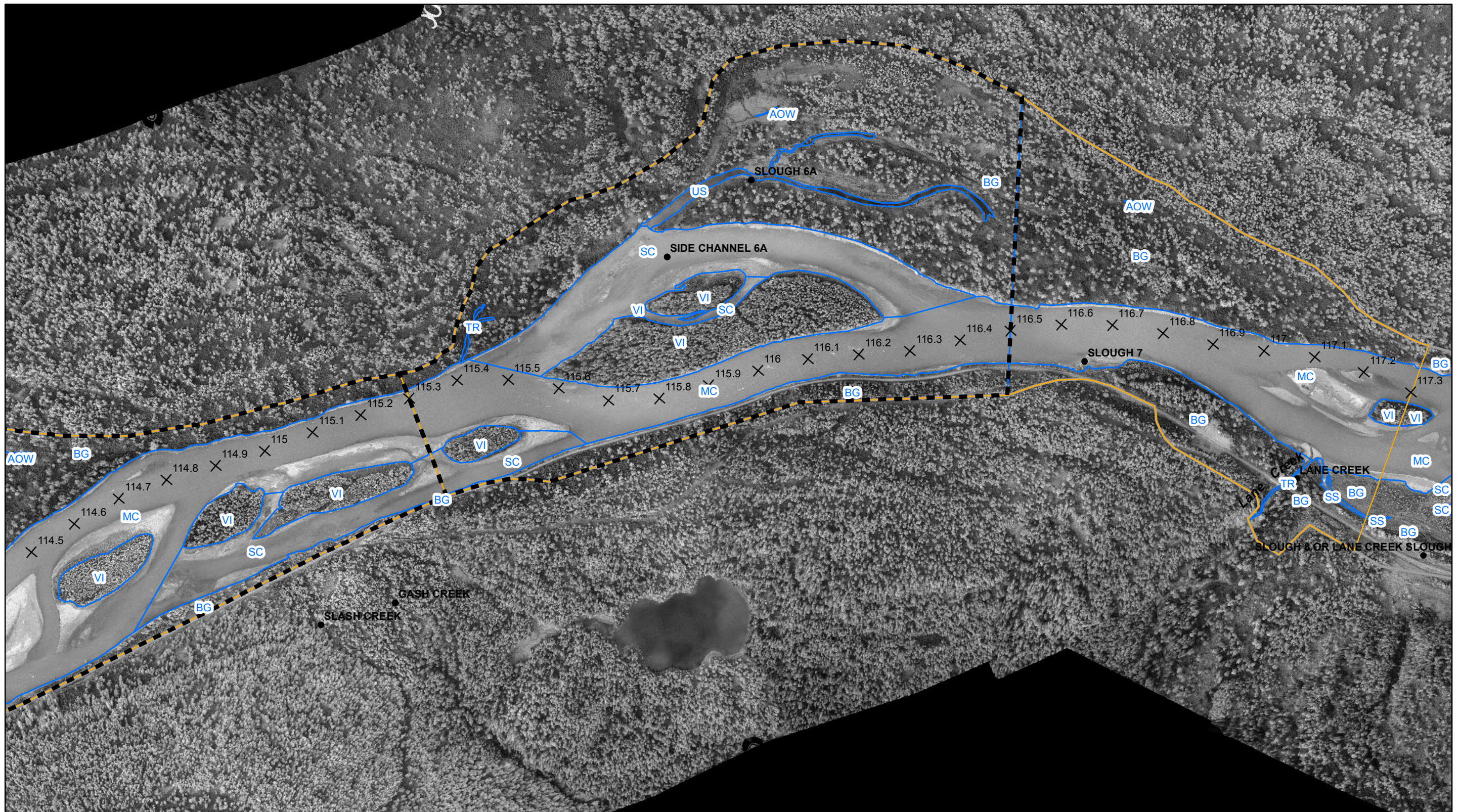


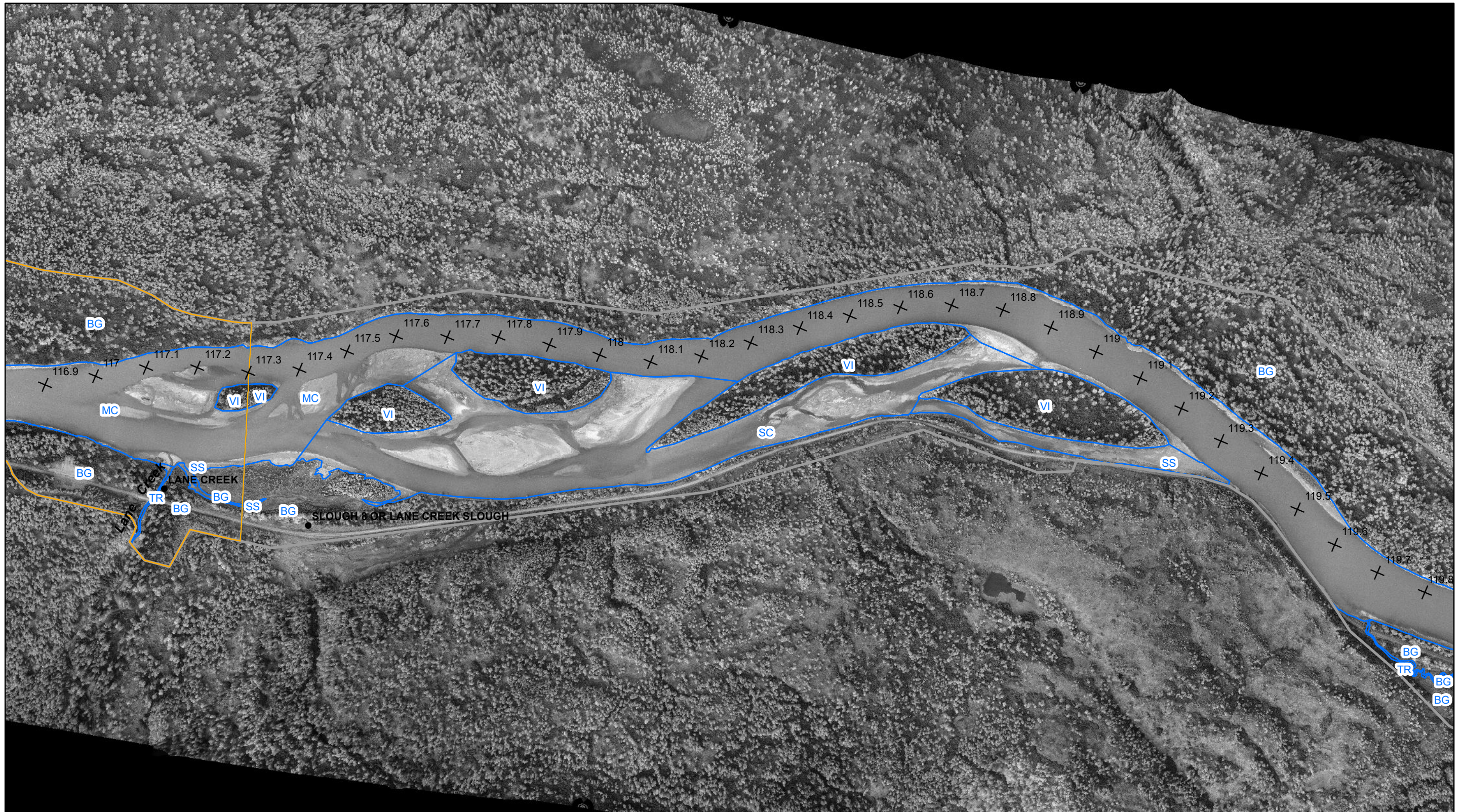


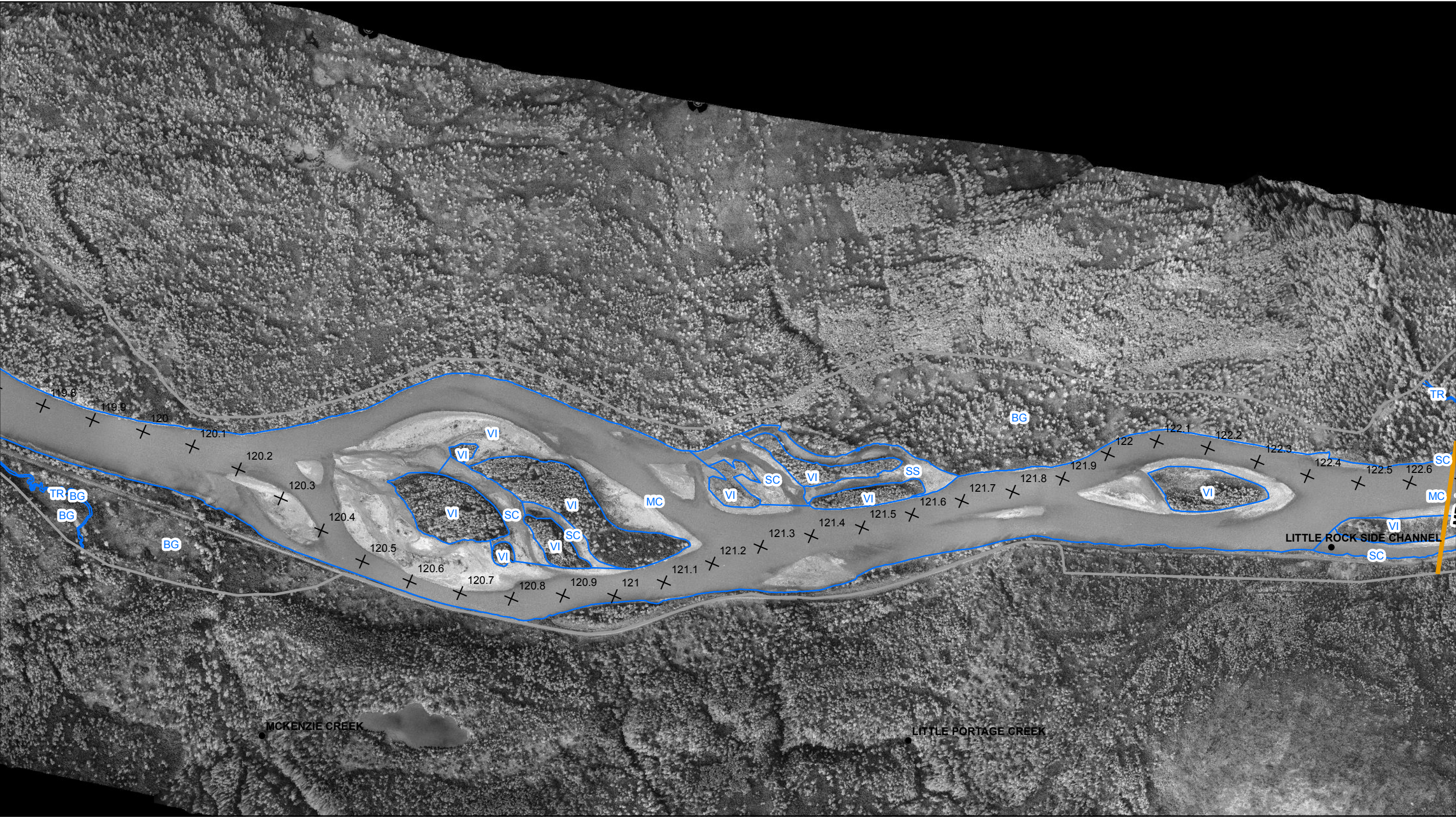


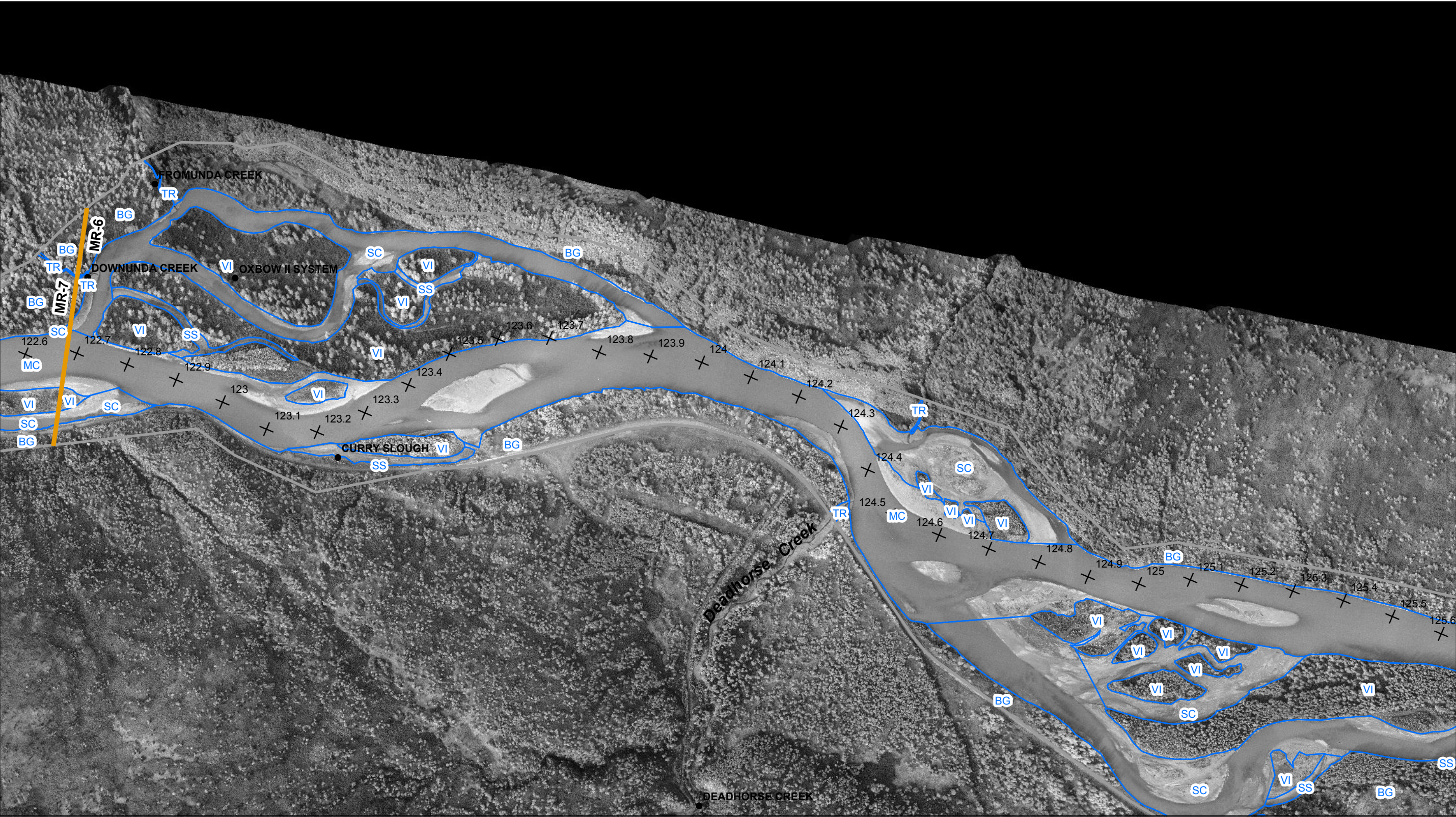




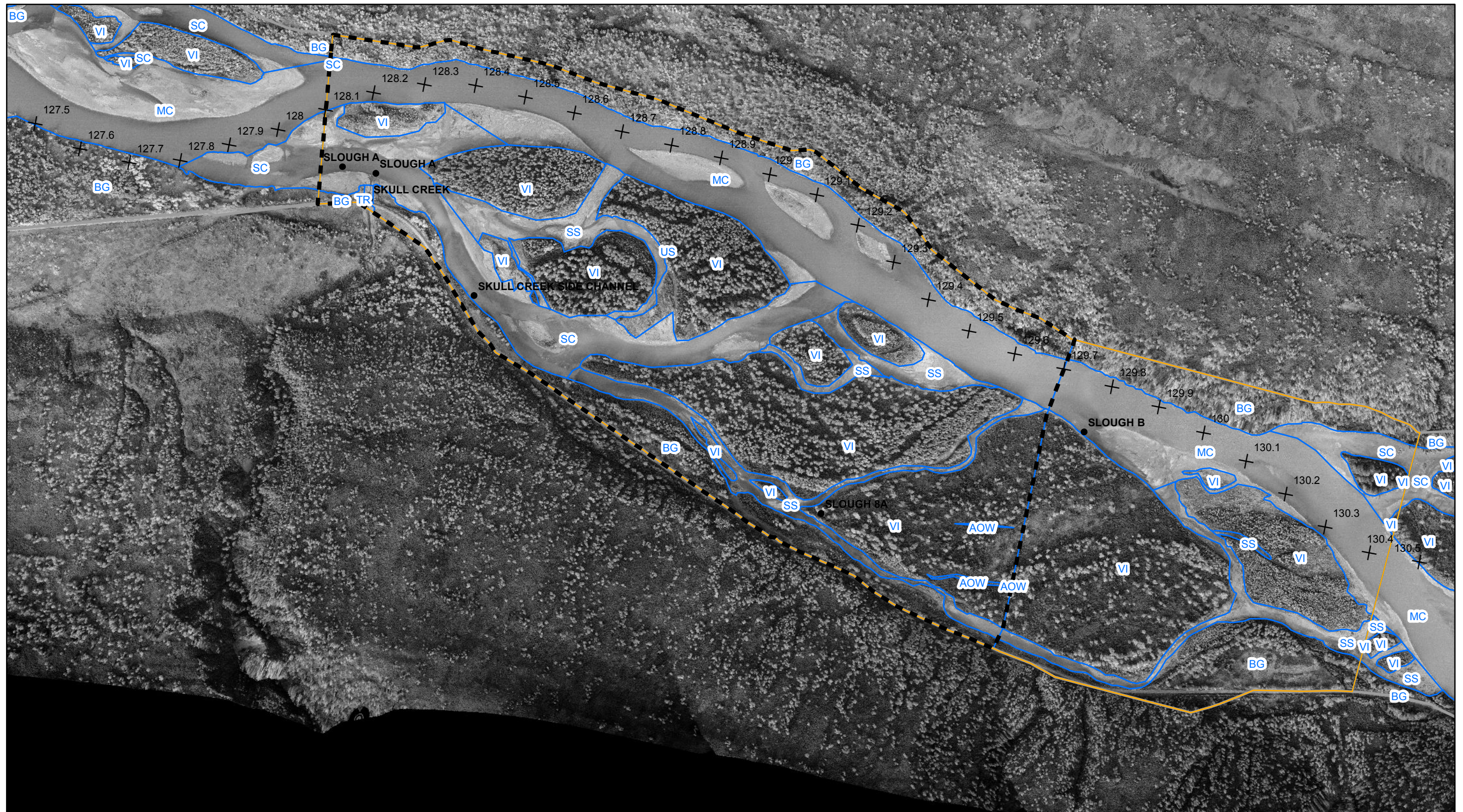












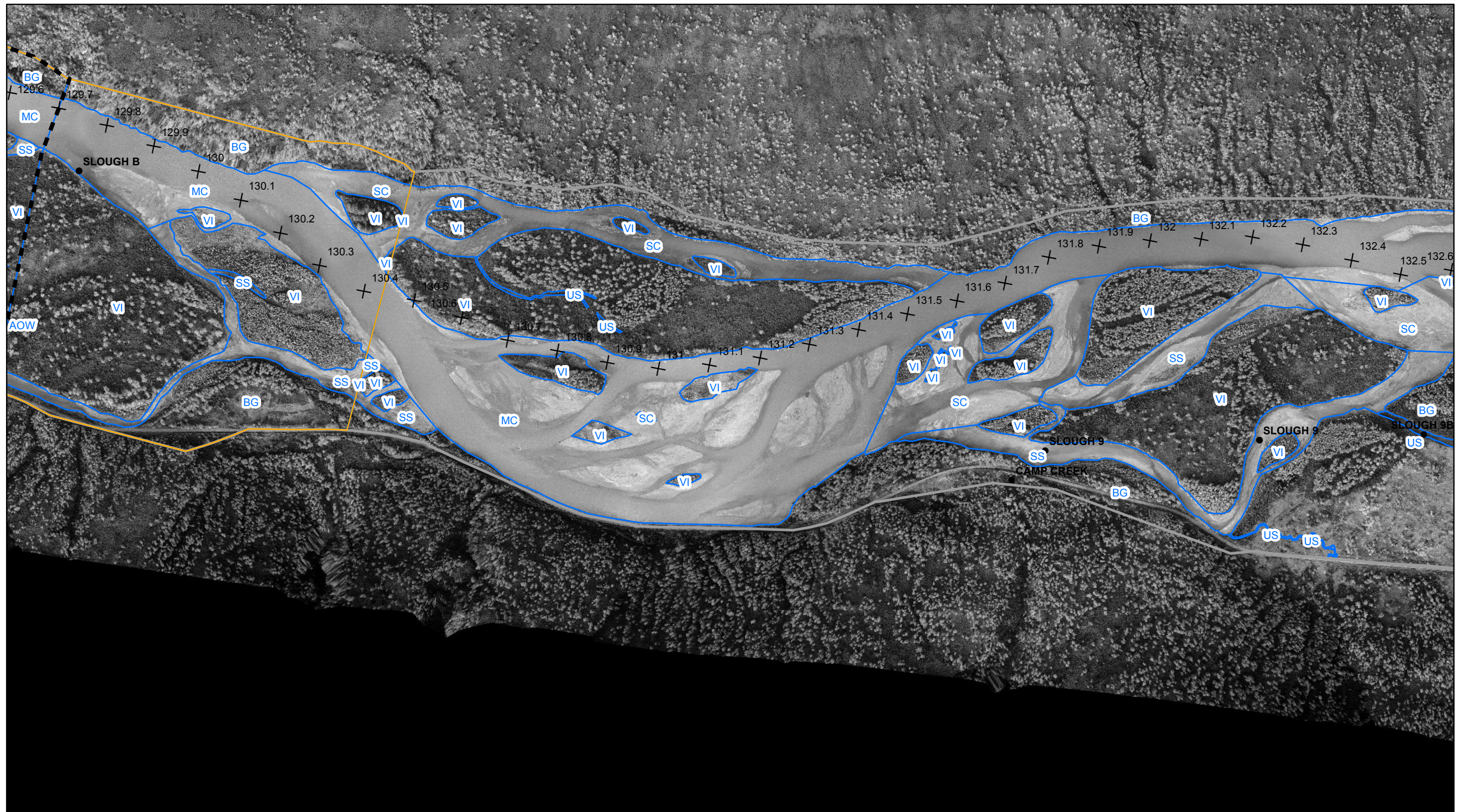
0 1,000 2,000 Feet
1 inch = 1,000 feet
See index page for legend and additional data information.

MIDDLE SUSITNA RIVER SEGMENT
1983 GEOMORPHIC FEATURES
Sheet 14 of 34

Location: Imagery Date, Discharge (Gold Creek)
PRM 102.0 - 154.0 09/11/1983, 12,500 cfs

Location: Imagery Date, Discharge (Gold Creek)
PRM 154.0 - 187.1 07/19/1980- 35,800 cfs
07/20/1980, 31,600 cfs





0 1,000 2,000 Feet
1 inch = 1,000 feet
See index page for legend and additional data information.

Sheet 15 of 34

MIDDLE SUSITNA RIVER SEGMENT 1983 GEOMORPHIC FEATURES

Location: Imagery Date, Discharge (Gold Creek)
PRM 102.0 - 154.0 09/11/1983, 12,500 cfs

Location: Imagery Date, Discharge (Gold Creek)
PRM 154.0 - 187.1 07/19/1980- 35,800 cfs
07/20/1980, 31,600 cfs



