

PEVS 32.2

Memorandum

June 2, 1992

SEP 19 1992

To: Pamela Bergmann, DOI
Byron Morris, NOAA

From: John Strand, NOAA JAS
Karen Oakley, FWS KO

EXXON VALDEZ OIL SPILL
TRUSTEE COUNCIL
ADMINISTRATIVE RECORD

Subject: Additional Guidance for Preparation of Damage
Assessment Final Reports

We ask that you consider the following materials when developing additional guidelines for preparation of final reports. Essentially, these guidelines are the same as recently adopted by the Fish and Wildlife Service. As to provisions of style, the guidelines follow a convention used by the Journal of Wildlife Management (see Attachment A). Please note that this guidance incorporates the guidance on general format that was previously developed and issued by the Restoration Team.

ADDITIONAL GUIDANCE FOR DAMAGE ASSESSMENT FINAL REPORTSNature of the Final Reports

The final report for each Damage Assessment study should be a comprehensive report addressing all data collected over the course of the entire study. The final report should address the original objectives of the study and any changes in the objectives. Although the interim reports are now public, these reports will simply not be as available as the final reports will be. Thus, avoid citing to interim reports in your final report. Think of the final report as both the first and last word on the subject for the purpose of damage assessment under the Comprehensive Environmental Response, Compensation and Liability Act (CERCLA).

Publication of Results

To preserve the opportunity for investigators to publish results in the peer-reviewed literature, the final reports will not be published as a series. The reports will be simply reports to a sponsoring agency.

Investigators who do not plan to submit results to peer-reviewed journals but who would like their results to be more widely reported will have other opportunities to publish their results. The Trustee Council may sponsor an Exxon Valdez oil spill

symposium during 1993, and submitted papers will likely be published in the symposium proceedings.

Format for Final Reports

The Restoration Team has previously provided guidance on the general format of the final reports (Attachment 8).

For other matters of style, please refer to Ratti and Ratti (1988), provided as Attachment B. Where conventions different than those in Ratti and Ratti (1988) will be used, the change has been indicated in the margin.

Word Perfect Conventions

Please use Word Perfect 5.0 or 5.1 to help produce reports with a consistent format.

1. Use Format (shift F8) to set up the following standard settings:

Line

Hyphenation - off
Justification - left
Margins - 1" for both left and right
Tabs - 0", every 0.5"
Widow Protection - On

Page

Margins - 1" at top and bottom
Page numbering - yes, bottom center
Header - yes for manuscript, no in final report

Document

Initial Font - Courier 10cpi

2. Use Word Perfect's Table of Contents feature (see pages 735-739 of 5.1 documentation) to create the Table of Contents, List of Figures and List of Tables.
3. Use the Block Protect feature (see page 50) to prevent page breaks from separating headings from the following text. Do not use hard page breaks for this purpose.
4. Use italics (rather than underlining) for latin names and for *T/V Exxon Valdez*. If your printer does not print italics, then use underlining.
5. Regularly use the spell check feature to catch typographical errors. Always do a complete spell check before producing review drafts.

6. Use the space bar, tab key and indent (F4) feature appropriately.
 - a. Only use spaces to separate words and sentences.
 - b. Use tabs to place characters at set locations across the page, such as when placing a list in the text.
 - c. Use indents when you want the text to wrap around at a tab point to the right of the left margin. A hard return is only used at the end of the text to be indented.
9. To make a hanging indent for use in the Literature Cited section, start each citation with indent, shift-tab (F4, shift-tab). Only use a hard return at the end of the complete citation. Example:

[F4, shift-tab] Byrd, G. V., D. D. Gibson, and D. L. Johnson. 1974. The birds of Adak Island, Alaska. Condor 76:288-300.[hard return]

Other Style Conventions

When referring to the tanker vessel *Exxon Valdez* as a ship, use *T/V Exxon Valdez*. Example: The *T/V Exxon Valdez* ran aground on Bligh Reef.

When referring to the oil spill that occurred because the *T/V Exxon Valdez* ran aground, use *Exxon Valdez* oil spill. After the first mention of the *Exxon Valdez* oil spill in your report, refer to it simply as the spill. Do not use acronyms such as EVOS.

Use the terms "damages" and "injury" as defined by CERCLA regulations (see 43 CFR 11.14).

Damages means the amount of money sought by the natural resource trustee as compensation for injury, destruction or loss of natural resources

Injury means a measurable adverse change, either long- or short-term, in the chemical or physical quality or the viability of a natural resource resulting either directly or indirectly from exposure to a discharge of oil. Injury encompasses the phrases "destruction" and "loss."

Destruction means the total and irreversible loss of a natural resource.

Loss means a measurable adverse reduction of a chemical or physical quality or viability of a natural resource.

Avoid reference to interim reports. When you need to cite to information presented in an interim report by another investigator, contact the investigator to determine if the information will be presented in a final report. Cite to final reports whenever possible.

Attachments:

- A Format for Final Reports
- B Ratti and Ratti (1988), as adapted for Damage Assessment Final Reports

J. Manage. 52(1):1988

ing season (Chapter 9)
ed hunter kill of rails
ia in some years has

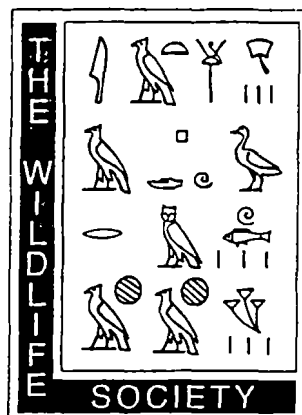
Other mortality hap-
telephone wires and
ality probably occurs,
ive information in his
apter 10. Natural ca-
urricanes), predation,
Chapter 11. Some in-
presented, but quan-
tatively clapper rails
hich caused eggshell
ises in many species
resently used, it was
quito control in salt

d have been separate
orporated into other
ortant information.
s ranging from 1808
erial for most of the

photographs by the
o the text. A color
alented John Taylor,
general writing style
enjoyable as well as
erence book and can
atural history read-
the salt marsh will
le addition to their
uxent Wildlife Re-
3.

MANUSCRIPT GUIDELINES FOR THE JOURNAL OF WILDLIFE MANAGEMENT

Adapted for use in preparing
Damage Assessment Final Reports.



By

John T. Ratti and Leslie W. Ratti

1988. J. Wildl. Manage. 52(1, Suppl.). 34 pp.

The Wildlife Society, Inc., Bethesda, MD

1 January 1988
John T. Ratti
Department of Fish & Wildlife Resources
University of Idaho
Moscow, ID 83843
208-885-6434

RH: JWM Manuscript Guidelines · Ratti and Ratti

MANUSCRIPT GUIDELINES FOR THE JOURNAL OF WILDLIFE MANAGEMENT

JOHN T. RATTI, Department of Fish and Wildlife Resources, University of
Idaho, Moscow, ID 83843

LESLIE W. RATTI,¹ The Wildlife Society, c/o Department of Fish and
Wildlife Resources, University of Idaho, Moscow, ID 83843

Abstract: This publication provides guidelines for preparing manuscripts submitted to The Journal of Wildlife Management (JWM) for publication consideration. Authors should submit manuscripts in the format and style presented in these guidelines. Proper preparation increases the probability and speed of acceptance.

J. WILDL. MANAGE. 00(0):000-000

Key words: author, format, guidelines, instructions, manuscript, The Journal of Wildlife Management.

These guidelines update Gill and Healy (1980) and those on the back cover of some issues of JWM. This update was prepared to make the guidelines more available to authors by publication in JWM, to include basic format changes, and to provide additional examples. Authors should review a recent issue of JWM but should understand that there are differences between articles in final printed form and correct format of submitted manuscripts (e.g., key words, placement of tables and figures, and line spacing). Check the most recent JWM issues for instructions that may supersede these guidelines and the name and address of the current editor in chief. Papers

¹Present address: ThoroGold Farm, 2457 W. Twin Road, Moscow, ID 83843.

that obviously deviate from JWM format and style may be returned for correction before review.

Special thanks go to S. L. Beason for major contributions to this manuscript. We received helpful review comments from B. B. Ackerman, C. E. Braun, D. E. Capen, J. D. Gill, F. S. Guthery, G. B. Healy, H. E. Hodgdon, R. L. Kirkpatrick, F. L. Knopf, P. R. Krausman, N. A. Lawrence, K. R. Rautenstrauch, and P. E. White. Portions of this manuscript have been extracted from Gill and Healy (1980) with permission of The Wildlife Society. This is Contribution 293, University of Idaho Forest, Wildlife, and Range Experiment Station.

POLICY

Referees and editors judge each submitted manuscript on data originality, ideas, interpretations, accuracy, conciseness, clarity, appropriate subject matter, and contribution to existing literature. Prior publication or concurrent submission to other refereed journals precludes publication in JWM (see additional information in section on Transmittal Letter and Submission). The JWM, Wildlife Society Bulletin, and Wildlife Monographs have identical quality standards. Fisheries papers are discouraged unless information is part of an account that mainly concerns terrestrial vertebrates.

PAGE CHARGES AND COPYRIGHTS

Current policies and charges are explained in the acknowledgment sent to authors when manuscripts are accepted for publication. Page charges may change annually; in 1987 they were \$50/page for the first 10 pages plus \$95 for each succeeding page. Authors pay for alterations to page proofs (in 1987, \$2/reset line) except for typesetting and editorial errors. If a manuscript not in the public domain is accepted for publication, authors or their employers must transfer copyright interest to The Wildlife Society. Publications authored by federal government employees are in the public

domain. Manuscript submission implies entrusting a clear copyright (or equivalent: trust in public domain work) to the editor in chief until the manuscript is either rejected, withdrawn, or accepted for publication. If accepted, The Wildlife Society retains the copyright.

COPY

Use good-quality white paper, 215 x 280 mm (8.5 x 11 inches) or metric size A4. Do not hyphenate words at the right margin. If your manuscript is typed with a computer word processor, do not right-justify the text.

Manuscripts produced on poor-quality dot matrix printers are not acceptable.

Margins should be ^{1 inch} 3 cm (1 3/16 inches) on all sides. ~~Do not violate margin boundaries to begin a new paragraph or the Literature Cited section at the top of a new page; i.e., do not leave >3 cm of space at the bottom of a page.~~ Type the senior author's last name (upper left) ^{the date (center)} and page numbers

Use widow/orphan protection

(upper right) on pages 2 through the Literature Cited and on tables and figure title pages, but not on the first page, figures, or illustrations.

Underline words in the text only to indicate italics for scientific names or emphasis (rarely). Keep the original copy and submit ¹ good-quality

photographic copies. Submit a transmittal letter (see below) with your manuscript. ^{to the Oil Spill Office.}

Use italics if available on your printer

RUNNING HEAD, TITLE, AND AUTHORS

Page 1 of the manuscript should ^{follow format shown on following page.} ~~begin with the date (update with each revision), corresponding author's name, address, and telephone number, single-spaced in the upper left corner. Thereafter, all text is double-spaced, ^{except} including tables.~~

~~The running head (RH) is the first line following the correspondent's address. The RH is limited to 45 characters, left-justified, and typed in upper- and lower-case letters followed by a dot (or raised period) and the last name(s) of 1 or 2 authors. For >2 authors use the name of the first author followed by "et al." Single underline the author's name(s). The RH is~~

MEMORANDUM

State of Alaska

DEPARTMENT OF FISH AND GAME

13.4.10

TO: Restoration Team

DATE: May 21, 1992

FILE NO.:

TELEPHONE NO.: 267-2136

FROM: Mark Fraker,
Wildlife Program
Manager, OSIAR

SUBJECT: Comment Response
Plan for 1992 Work
Plan

RECEIVED
MAY 21 1992

VALDEZ OIL SPILL
TRUSTEE COUNCIL
ADMINISTRATIVE RECORD

The 1992 Work Plan Working Group met all day on the 20th to arrive at a final plan for responding to public comments on the 1992 Work Plan so that there will be a product and recommendations that can go to the Trustee Council on 24 June. The following is a summary of main points:

Schedule: Attached is a revised flow chart and timeline. It is very apparent that there is no excess room in which to accomplish all that we have to.

Responders: It is the view of the working group that there will not be time enough to delegate the task of writing responses to project-specific comments to the PIs. We believe that one or two key persons from each agency should be assigned to work at CACI during the "crunch" period. Those individuals will write responses, calling on PIs and others as necessary for technical assistance. It is recognized, however, that many PIs will be in the field. The responders will simply have to do the best that they can, given the time and resources available.

There is office space available at CACI to accommodate a person from each agency. However, individuals will have to provide their own computer equipped with WordPerfect 5.1.

I ask that RT members provide me with the names of the responders from their agencies by 4 June.

Comments of a legal nature will be directed to a legal team that Craig Tillery will ask Alex Swiderski to organize. Comments of a general nature about the overall process will be directed to Dave Gibbons.

Public Meetings Comments: We have asked Ken Rice to be responsible for extracting comments on the 1992 Work Plan from the transcripts of the public meetings. These comments will be treated like written comments and will be assigned to the appropriate agency.

Post-It™ brand fax transmittal memo 7671		# of pages ▶ 2
To <i>Mr. Rebecca Piz</i>	From <i>M. Fraker</i>	
Co. <i>Annette</i>	Co.	
Dept. <i>CACI</i>	Phone #	
Fax #	Fax #	

DRAFT

Writer / Editor: The working group concluded that there will not be time for a writer / editor to rework the document. Nor do we recommend having a writer / editor rework the document after the Trustee Council has approved it.

Recommendations: We are asking responders to write recommendations for project modifications or additions of projects. These recommendations can be entered into a separate document or included with the response document. We look to the RT for guidance on this.

Review: We are planning that the RT, Chief Scientist, and Legal Team will provide review at CACI on 17 and 18 June. Our aim is that there will be only one master copy of the first draft.

Contingencies: We have been planning in the absence of any clear indication of how many comments we are going to receive. There may be a need for CACI support staff to work overtime, but we cannot predict the degree to which that may be necessary. There is adequate back-up for photocopying machines.

The most serious vulnerability that we have identified, short of fire at CACI, is the computer system. Jim Slocomb is scheduled to be away from 1-8 June, the period when comments are to be coded and paraphrased. This is a critical time; in fact, all of June is critical. We will be severely handicapped if anything goes wrong with the computer system. We need either to have Slocomb present during this entire time or have someone else from an agency who is completely familiar with the computer systems who can cover for Jim. There will be no one from CACI who will be able to serve this function. We look to the RT to recommend a solution.

Project Status Report: You will recall that the Trustee Council requested a report on project status to 30 June. To that end, I prepared a form, which is also attached. Please distribute it to your PIs and return the completed forms to me by 10 June so that I can prepare a summary project status document for the Trustee Council.

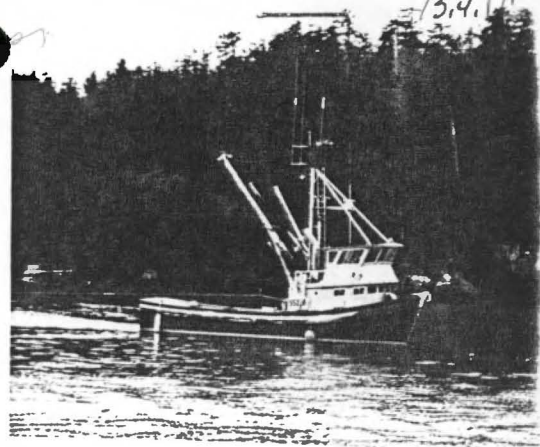
xc: C. Tillery
A. Swiderski
D. Gibbons
92 WPWG

92WPWG: Please give me any
comments by noon, 22 May.



MCS ?

FV/RV CARMEN ROSE
Brian L. King, Owner/Operator
P.O. Box 865
Cordova, Alaska 99574
Phone: (907) 424-7467
Fax: (907) 424-7477



Dear Potential Charterer:

I am seeking charter work for the CARMEN ROSE this season in Prince William Sound or elsewhere in Alaska. I am assuming that there will be some research and "rehab" projects planned for this year made possible by the state's EXXON settlement. If you think you may be involved in one of these projects and have a need for a vessel, consider the CARMEN ROSE. I realize that you have to work hard lobbying for your project funding and I can guarantee you an excellent value for your research dollar.

The CARMEN ROSE is comfortable, reliable and well equipped. It is a seaworthy vessel with all the latest safety gear, and we always take a prudent approach when adverse weather conditions threaten. I have thirty years of experience in Prince William Sound and Alaska without an accident. I have enjoyed working with the scientific community and find these types of projects very interesting. I had the opportunity to work with the EPA and NOAA after the oil spill on their bioremediation experiments, so I am familiar with the needs of researchers on projects such as these. The CARMEN ROSE and crew worked well for them. I might add that we take great pride in our cooking on board the CARMEN ROSE and can also cater to special diets.

I charter the CARMEN ROSE including food, fuel, crew and skiff. If you see something on the "spec" sheet that may be missing for your job, please don't disregard us. I am willing to retrofit to your needs. As an example, I have a small lab that fits partially in the hatch on the drawing board.

If you need a boat like the CARMEN ROSE or know someone who does please give me a call. Please keep in mind that I am targeting this kind of work and I am therefore motivated to do a good job for you. Not all boat owners that answer your call for bids are.

Sincerely:

Brian L. King
Brian L. King

RECEIVED
FEB 11 1992
A.D.E.C.
COMMISSIONER'S OFFICE

RV/FV CARMAN ROSE

Built in 1988 by Ledford Marine of Marysville, Washington

Owned and operated by Brian L. King

Post Office Box 865

Cordova, Alaska 99574

Phone: (907) 424-7467

Fax: (907) 424-7477

Overall Length.....	50'
Beam.....	16'
Draft.....	3'
Displacement.....	Net tons, 40 gross tons
Fuel Capacity.....	1000 Gallons
Range.....	Approximately 1000 Miles
Speed.....	9 Knots
AC Power.....	40 KW, 110/220
DC Power.....	12 Volts

Full shower, galley, freezer, and berthing for 7

Full compliment of modern electronics

400 square feet of deck space

Fully articulated main boom with 2 side booms

Deck winch

Two dry holds totaling 1400 cubic feet

50 Gallons per minute deck hose

Top house

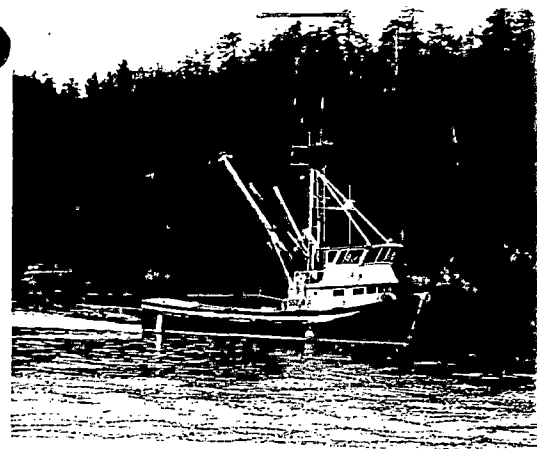
Crows nest with controls

Quartz deck lights

14' Skiff and outboard

Recd 2/21/92

FV/RV CARMEN ROSE
Brian L. King, Owner/Operator
P.O. Box 865
Cordova, Alaska 99574
Phone: (907) 424-7467
Fax: (907) 424-7477



Dear Potential Charterer:

I am seeking charter work for the CARMEN ROSE this season in Prince William Sound or elsewhere in Alaska. I am assuming that there will be some research and "rehab" projects planned for this year made possible by the state's EXXON settlement. If you think you may be involved in one of these projects and have a need for a vessel, consider the CARMEN ROSE. I realize that you have to work hard lobbying for your project funding and I can guarantee you an excellent value for your research dollar.

The CARMEN ROSE is comfortable, reliable and well equipped. It is a seaworthy vessel with all the latest safety gear, and we always take a prudent approach when adverse weather conditions threaten. I have thirty years of experience in Prince William Sound and Alaska without an accident. I have enjoyed working with the scientific community and find these types of projects very interesting. I had the opportunity to work with the EPA and NOAA after the oil spill on their bioremediation experiments, so I am familiar with the needs of researchers on projects such as these. The CARMEN ROSE and crew worked well for them. I might add that we take great pride in our cooking on board the CARMEN ROSE and can also cater to special diets.

I charter the CARMEN ROSE including food, fuel, crew and skiff. If you see something on the "spec" sheet that may be missing for your job, please don't disregard us. I am willing to retrofit to your needs. As an example, I have a small lab that fits partially in the hatch on the drawing board.

If you need a boat like the CARMEN ROSE or know someone who does please give me a call. Please keep in mind that I am targeting this kind of work and I am therefore motivated to do a good job for you. Not all boat owners that answer your call for bids are.

Sincerely:

Brian L. King

Brian L. King

RV/FV CARMAN ROSE

Built in 1988 by Ledford Marine of Marysville, Washington

Owned and operated by Brian L. King
Post Office Box 865
Cordova, Alaska 99574
Phone: (907) 424-7467
Fax: (907) 424-7477

Overall Length.....	50'
Beam.....	16'
Draft.....	3'
Displacement.....	Net tons, 40 gross tons
Fuel Capacity.....	1000 Gallons
Range.....	Approximately 1000 Miles
Speed.....	9 Knots
AC Power.....	40 KW, 110/220
DC Power.....	12 Volts

12 HOT

Full shower, galley, freezer, and berthing for 7

Full compliment of modern electronics

400 square feet of deck space

Fully articulated main boom with 2 side booms

Deck winch

Two dry holds totaling 1400 cubic feet

50 Gallons per minute deck hose

Top house

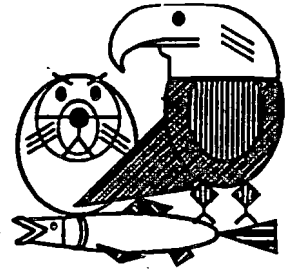
Crows nest with controls

Quartz deck lights

14' Skiff and outboard



Exxon Valdez Oil Spill Restoration Team
645 "G" Street, Anchorage, AK 99501
Phone: (907) 278-8012 Fax: (907) 278-7176



April 2, 1992

RECEIVED
OCT 14 1992

Brian L. King
FV/RV Carmen Rose
P.O. Box 865
Cordova, AK 99574

EXXON VALDEZ OIL SPILL
TRUSTEE COUNCIL
ADMINISTRATIVE RECORD

Dear Mr. King:

Thank you for the information on your vessel CARMEN ROSE. I have forwarded the material to those on the Restoration Team who are responsible for tracking any possible vessel charter needs this season.

Sincerely yours,

Dave Gibbons, PhD
Interim Administrative Director

cc: Trustee Council

MEMORANDUM

STATE OF ALASKA

RECEIVED
E OF ALASKA
JUL 17 1992

**ALASKA DEPARTMENT OF ENVIRONMENTAL CONSERVATION
EXXON VALDEZ OIL SPILL RESPONSE CENTER**

4241 "B" STREET, SUITE #304 ANCHORAGE, ALASKA 99503

TION **EXACT DATE OF BIRTH**
WITNESS COUNTY
03

TO: Restoration Team

DATE: January 17, 1992

TELEPHONE NO: 563-1126 FAX: 563-1325

FROM: E. Piper

SUBJECT: Outline for meetings

Attached are the materials each presenter/moderator will have for consultation or distribution during the public meetings beginning January 20 in Cordova.

SUGGESTED OUTLINE

1. Introduction (5 minutes)
 - a. Purpose of these meetings
 - b. Information on when restoration framework meetings will be held.
2. Restoration history (10 minutes)
 - a. Basics of the settlement, as it relates to restoration planning, funding, and decision-making.
 - b. Summary of injury
 - c. Known decision points
3. General comments or prepared statements (20-30 minutes)

You may want to request that people keep statements to some appropriate time limit, especially if the comments are general and not related specifically to public participation.
4. Open discussion on public participation program development
5. Questions and answers

ATTACHMENTS

1. Cover letter (for distribution)
2. 18-page summary of injury (for distribution)
3. Memo from Alaska Dept. of Law regarding release damage assessment studies (for your edification)
4. Discussion questions (for distribution)
5. "Stakeholder" list (for distribution)
6. "Settlement 101" basics (for distribution)
7. Press release on next Trustee Council meeting (for distribution)
8. Set of yellow, buff, pink books (for reference)
9. Set of two blue books (for reference)

Please make sure you circulate an attendance sheet, collect copies of written comment (if available), and note the name and address of people who requested additional information or need an answer to a specific question you were unable to answer completely.

MEMORANDUM

State of Alaska

Department of Law

TO: L.J. Evans

DATE: January 22, 1992

FILE NO:

TEL. NO: 269-5274

SUBJECT: Release of Scientific
Data

Craig J. Tillery
FROM: Craig J. Tillery
Assistant Attorney General
Environmental Section

CONFIDENTIAL
Attorney Work Product

You have asked about the status of scientific data generated from the Exxon Valdez oil spill studies. That material falls into two categories, materials generated by the agencies as part of the response efforts and materials generated as part of the NRDA process. Response studies have, for the most part, already been provided to all parties in the litigation and are available to the public subject to the usual logistical problems inherent in dealing with that amount of paper.

NRDA studies, on the other hand, are studies undertaken at the direction of counsel for the governments and are attorney work product. Because most of these studies are joint studies of the governments, they cannot be released without the written consent of both the Department of Law and the Department of Justice. The State does not intend to release the scientific data at this time because that information continues to be relevant to existing litigation with parties that have sued and not settled with the governments and to litigation by the governments against Alyeska. In addition, as part of their settlement with the private plaintiffs, the governments have made this scientific information available to Alaska claimants for use in their litigation against Exxon. To ensure that these plaintiffs are not put at a disadvantage vis-a-vis Exxon, the information should be kept confidential for the moment.

The State will seek to have the scientific data released in its entirety to the public as soon as circumstances permit. In the meantime, in order to facilitate public participation in the restoration process, the governments will be releasing shortly a summary of the findings of the studies.

It is my understanding that you will not release this memorandum to the public, but may use the information contained in it to formulate your response to questions asked during your public participation scoping meetings.

Greg Cushing
M/V Mark II
P.O. Box 164
Sitka, Ak. 99835

Jan. 27, 1992

Mr. Dave Gibbons
Oil Spill Restoration Council
645 G Street
Anchorage, Ak. 99501

Dear Mr. Gibbons,

Enclosed is a brief description of a vessel I have available for any restoration / research work that may happen during the upcoming season. I was directed to your office by Dave Jessen (Camp David Barge in Herring Bay), whom I have worked with extensively.

Should this type of vessel be utilized this year, I feel confident that we have the equipment and personnel to do the very best job possible.

I'll be happy to supply any more details or information you may need. Thank you for your consideration.

Sincerely,

Greg Cushing

F/V MARK II

THE MARK II IS A 50' STEEL OFFSHORE VESSEL.

ALTHOUGH ORIGINALLY CONSTRUCTED FOR COMMERCIAL FISHING, ITS LARGE CABIN AND CONVENIENT LAYOUT MAKE IT A COMFORTABLE EXTENDED- TRIP VESSEL.

THE LARGE WORKDECK MAY BE UTILIZED WITH OR WITHOUT A REMOVABLE ALUMINUM SHELTER ON THE AFTER DECK. HYDRAULIC LIFTING GEAR REACHES ANYWHERE ON DECK.

BELOW DECK IS APPROXIMATELY 750 CU. FT. OF DRY, INSULATED STORAGE AREA.

THE MARK II IS A VERY SEAWORTHY,VERSATILE VESSEL.

- * TWIN CUMMINS DIESELS- MAIN PROPULSION
- * 20 KW GENSET
- * BACK-UP HYDRAULICS AND STEERING
- * COMPLETE GALLEY/MICROWAVE/FRIDGE,ETC.
- * HEAD WITH SINK,ETC... SEPARATE SHOWER
- * 4 BUNKS FORWARD,WITH AMPLE
STORAGE,EASY ACCESS FROM PILOTHOUSE. SKIPPERS BUNK
IN PILOTHOUSE
- * FULL ELECTRONICS INCLUDING SONAR
- * 9 KTS CRUISE AT 9 GALLONS/HR.
- * HEAVY ANCHOR GEAR

MARK II OWNER/OPERATOR

GREG CUSHING

LIFELONG RESIDENT OF SITKA-35 YEARS

20 YEARS COMMERCIAL FISHING-12 AS OWNER.

WORKED IN PRINCE WILLIAM SOUND FROM APRIL TO
SEPTEMBER 1989 AS SKIPPER OF M/V PAKELOT, A LANDING
CRAFT USED IN THE CLEANUP OPERATION.

RETURNED IN APRIL 1990 AND ASSISTED IN
DEVELOPMENT OF CAMP DAVID BARGE; RESEARCH CAMP
LOCATED IN HERRING BAY, KNIGHT ISLAND.

OPERATED M/V PAKELOT FROM MAY THROUGH
SEPTEMBER 1990 ON CLEANUP .

DURING THE TWO WORK SEASONS, TRAVELED
EXTENSIVELY THROUGH THE AFFECTED PWS AREAS AND
GAINED MUCH "LOCAL KNOWLEDGE" OF CHART ERRORS,
DANGEROUS AREAS, ETC...

TWO USCG LICENSED SKIPPERS WITH EQUAL PWS
EXPERIENCE ARE AVAILABLE FOR THE MARK II AS BACKUP
IF NEEDED.

MOST OF OUR CREW ARE EXPERIENCED COMMERCIAL
DIVERS. DIVE GEAR IS ALWAYS ON BOARD.

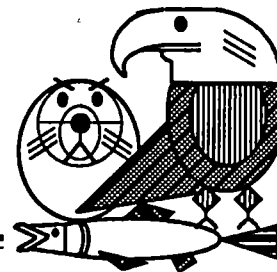
GREG CUSHING USCG LICENSE #627375

Box 164

SITKA, AK. 99835 (907) 747-3195



Exxon Valdez Oil Spill Restoration Team
645 "G" Street, Anchorage, AK 99501
Phone: (907) 278-8012 Fax: (907) 276-7178



April 2, 1992

RECEIVED
OCT 14 1992

Greg Cushing
M/V Mark II
P.O. Box 164
Sitka, AK 99835

EXXON VALDEZ OIL SPILL
TRUSTEE COUNCIL
ADMINISTRATIVE RECORD

Dear Mr. Cushing:

Thank you for the information on your vessel MARK II. I have forwarded the material to those on the Restoration Team who are responsible for tracking any possible vessel charter needs this season.

Sincerely yours,

Dave Gibbons, PhD
Interim Administrative Director

cc: Trustee Council