

12/28/94

RESTORATION WORK FORCE

* Agency Liaisons

USFS

Dave Gibbons *
709 W 9th Street, Rm 831
Juneau, Alaska 99802-1628

586-8784
586-7555 - Fax

Ray Thompson
3301 C Street, Rm 300
Anchorage, Alaska 99503-3998

271-2536
271-3992 - Fax

ADEC

Mark Brodersen *
410 Willoughby Avenue, Rm 105
Juneau, Alaska 99801-1795

465-5323
465-5375 - Fax

David Bruce
410 Willoughby Avenue, Rm 105
Juneau, Alaska 99801-1795

465-5322
465-5375 - Fax

Bob Loeffler
645 G Street, Rm 401
Anchorage, Alaska 99501-3451

278-8012
276-7178 - Fax

ADF&G

Jerome Montague *
1255 West 8th Street
Juneau, Alaska 99802-5526

465-6160
465-4759 - Fax

Joe Sullivan
333 Raspberry Road
Anchorage, Alaska 99518-1599

267-2213
522-3148 - Fax

NOAA

Byron Morris *
11305 Glacier Highway
Auke Bay, Alaska 99821

789-6600
789-6608 - Fax

Bruce Wright
11305 Glacier Highway
Juneau, Alaska 99821

789-6600
789-6608 - Fax

DOI

Catherine Berg *
1011 East Tudor Road
Anchorage, Alaska 99503

786-3598
786-3350 - Fax

Bud Rice
National Park Service
2525 Gambell, Rm 107
Anchorage, Alaska 99503

257-2466
257-2517 - Fax

Leslie Holland-Bartels
National Biological Survey *Service*
1011 East Tudor Road
Anchorage, Alaska 99503

786-3312
786-3636 - Fax

Lisa Thomas
National Biological Survey *Service*
1011 E Tudor Road
Anchorage, Alaska 99503

786-3685
786-3636 - Fax

ADNR

Veronica Gilbert *
645 G Street, Rm 401
Anchorage, Alaska 99501-3451

278-8012
276-7178 - Fax

Carol Fries
3601 C Street, Rm 1210
Anchorage, Alaska 99503

762-2483
562-4871 - Fax

3/10/94

RESTORATION WORK FORCE

* Agency Liaisons

USFS

Dave Gibbons * 586-8784
709 W 9th Street, Rm 831 586-7555 - Fax
Juneau, Alaska 99802-1628

Ray Thompson 271-2536
3301 C Street, Rm 300 271-3992 - Fax
Anchorage, Alaska 99503-3998

ADEC

Mark Brodersen * 465-5323
410 Willoughby Avenue, Rm 105 465-5375 - Fax
Juneau, Alaska 99801-1795

David Bruce 465-5322
410 Willoughby Avenue, Rm 105 465-5375 - Fax
Juneau, Alaska 99801-1795

Bob Loeffler 278-8012
645 G Street, Rm 401 276-7178 - Fax
Anchorage, Alaska 99501-3451

ADF&G

Jerome Montague * 465-6160
1255 W 8th Street 465-4759 - Fax
Juneau, Alaska 99802-5526

Joe Sullivan 267-2213
333 Raspberry Road 522-3148 - Fax
Anchorage, Alaska 99518-1599

NOAA

Byron Morris * 789-6600
11305 Glacier Highway 789-6608 - Fax
Auke Bay, Alaska 99821

Bruce Wright 789-6600
11305 Glacier Highway 789-6608 - Fax
Juneau, Alaska 99821

DOI

Sandy Rabinowitch *
2525 Gambell Street
Anchorage, Alaska 99503-2892

257-2653
257-2510 - Fax

Tony DeGange
1011 E Tudor Road
Anchorage, Alaska 99503

786-3492
786-3350 - Fax

Leslie Holland-Bartels
1011 E Tudor Road
Anchorage, Alaska 99503

786-3312
786-3636 - Fax

ADNR

Veronica Gilbert *
645 G Street, Rm 401
Anchorage, Alaska 99501-3451

278-8012
276-7178 - Fax

Carol Fries
3601 C Street, Rm 1210
Anchorage, Alaska 99503

762-2483
562-4871 - Fax

Organization Structure "Straw Dog"
Science Planning and Management
DRAFT 3/20/94

Restoration funds must be used "...for the purpose of restoring, replacing, enhancing, or acquiring the equivalent of *natural resources* injured as a result of the Oil Spill and the reduced or lost *services* provided by such resources..." Thus, restoration and restoration monitoring activities must be linked to the injured resources. However, we have recognized that a single-species approach to restoration is not adequate. The first policy stated in the Draft Restoration Plan is that the restoration program will take an **ecosystem approach**; this group has reiterated the ecosystem approach as one of the guiding principles. The organization diagram presented here is an attempt to describe a management structure that works from the base of the injured resources to develop an integrated, ecosystem approach to accomplishing the goals of healthy ecosystem components. Monitoring, ecosystem research, and active restoration projects must address the specific needs of particular injured resources in the context of restoring a healthy ecosystem. To implement this, we are proposing injured resource Work Groups coordinated by an interdisciplinary team.

Injured Resources Work Groups

1.) Responsibilities

- A. Identify strategies, research approaches, and testable hypotheses for monitoring, research, and general restoration.
 - a. Emphasis on integrated, interdisciplinary ecosystem approaches. SEA plan as an example.
 - b. Needed for guidance of FY-95 proposals and beyond.
- B. Annual review of resource status and strategies for achieving restoration objectives.
- C. Recommend priorities for research and restoration activities needed to achieve restoration objectives.
- D. Ensure communication, cooperation, and integration
 - a. Within Work Group.
 - b. Determine representative for Interdisciplinary Team for communication with other Work Groups.

2.) Composition

- A. Scientists from resource disciplines, including PI's with projects for monitoring and restoration of the injured resources.
- B. Scientists from other disciplines (e.g., oceanography, toxicology, ecosystem modeling).
- C. Public participation. Meetings are open to the public and interested public are kept in the communication loop.

Interdisciplinary Team

1.) Responsibilities

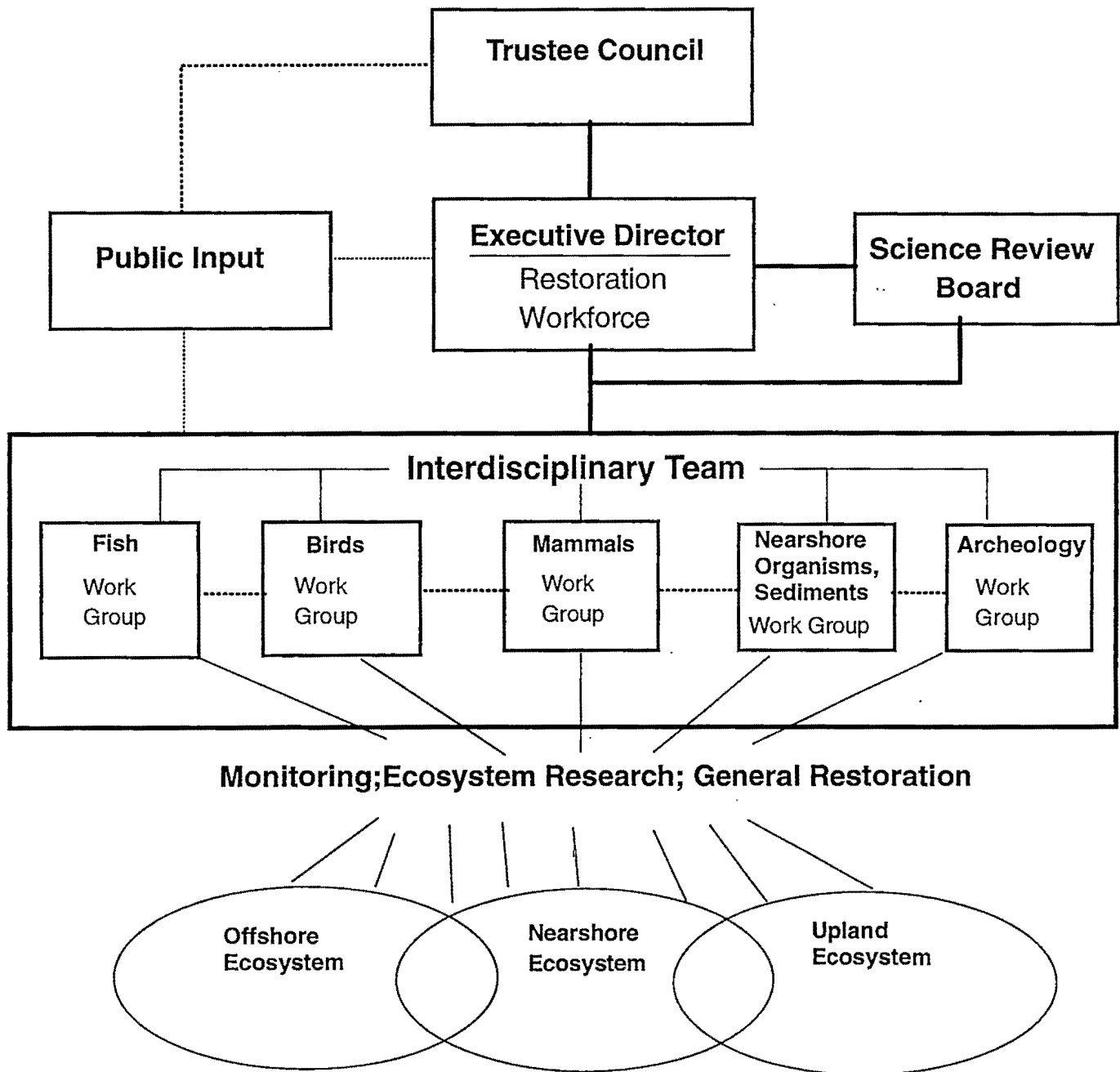
- A. Communication, coordination, and cooperation among Work Groups to ensure an integrated effort directed at restoration of injured resources and services and a healthy ecosystem.
- B. Coordination of information from Work Groups on strategies, testable hypothesis, priorities, and progress towards restoration for review by the SRB and the Executive Director.
- C. Coordination of activities with Restoration Work Force to facilitate agency administration and cooperation.
- D. Coordination of Work Groups participation in annual workshops.

2.) Composition

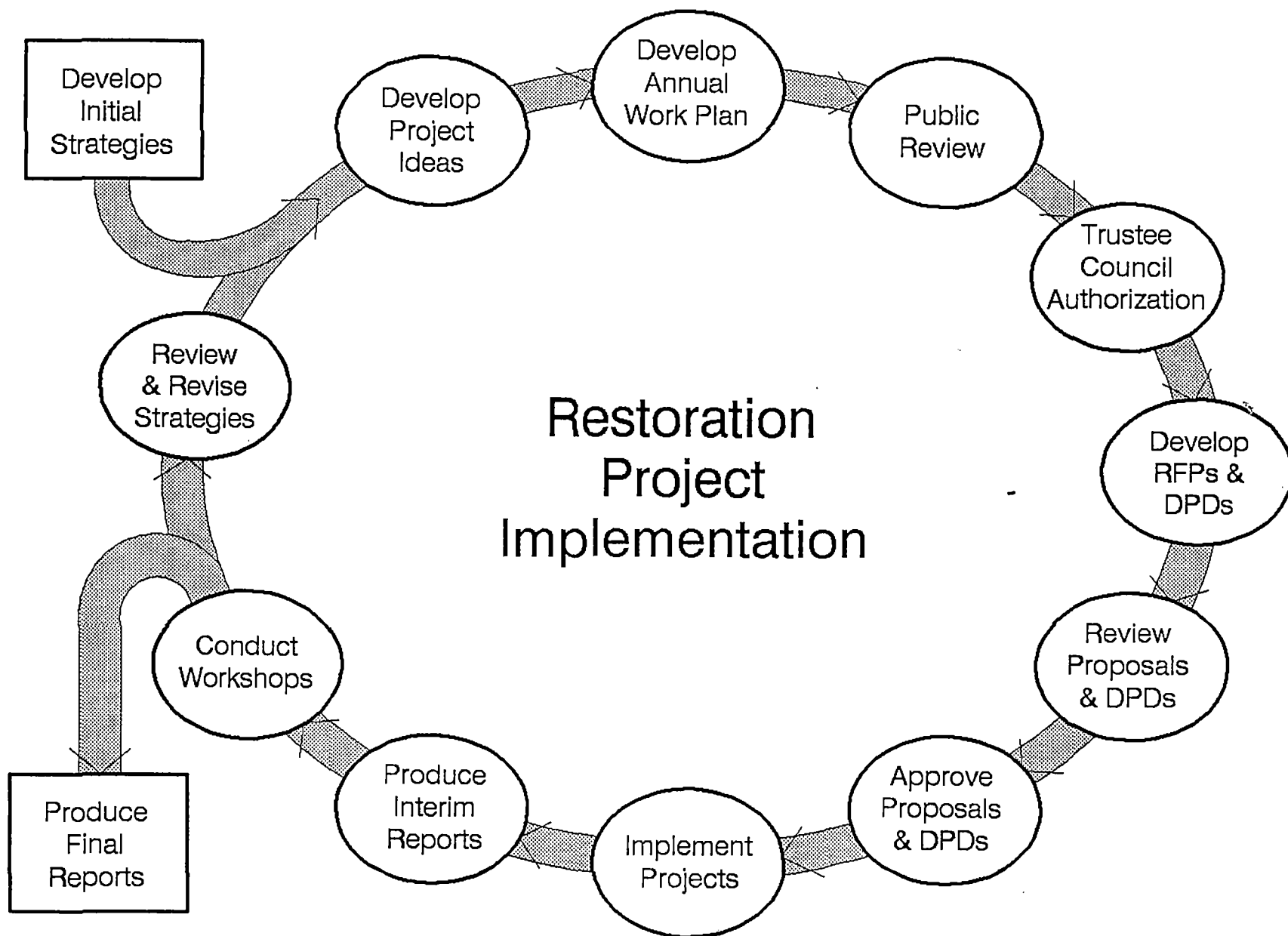
- A. Representatives from Work Groups.
 - a. One representative from each Work Group.
 - b. Executive Director must confirm selection.
- B. One State and one Federal representative from the Restoration Work Force, appointed by the Executive Director.
- C. Trustee Council Chief Scientist.
- D. Public participation: Meetings open to the public.

Organizational Diagram Science Planning and Management

(DRAFT 3/19/94)



DRAFT



DRAFT

Science Review Board

DRAFT

Duties of the Board:

1. Recommend scientific priorities based on technical merit;
 - A. Identify meritorious ideas and projects
 - B. Recommend a prioritized list of ideas and projects
 - C. Recommend resolution of conflicts between competing proposals
 - D. Recommend the best proposal or combination of proposals for a given objective and/or project.
2. Assist in the development of an adaptive management process;
 - A. Help integrate research and monitoring efforts
 - B. Help the process run more efficiently and effectively
 - C. Help synthesize study results and information from other sources
 - D. Following review of results, recommend appropriate changes to ongoing and proposed work and identify new projects.
3. Review proposed, ongoing, and completed work;
 - A. Review proposals
 - B. Review project design
 - C. Review project conclusions and reports.
4. Assist the Executive Director explain what has been done, what has been learned, and what needs to be done;
 - A. Explain the effects of completed projects
 - B. Explain how proposed projects aid restoration
 - C. Explain how proposed projects affect the ecosystem.

Assumptions:

1. The Trustee Council makes decisions, the Science Review Board makes recommendations and presentations to the Executive Director and the Trustee Council as appropriate.
2. The Science Review Board primarily focuses on technical merit. Social issues and policy considerations should be incorporated by the Executive Director and Trustee Council.
3. Social objectives and policy are set by the Trustee Council. When appropriate, the Science Review Board will be requested to make recommendations on how to most efficiently and effectively implement those objectives and policies.

4. The Science Review Board will operate on a consensus basis with majority and minority reports on an issue when necessary.
5. Science Review Board members only work part time and are compensated appropriately.
6. Both compensated and uncompensated peer reviewers will be available to the Science Review Board as necessary to review proposals, project descriptions, and reports.
7. The Science Review Board will review Work Group product and make recommendations to the Executive Director and Trustee Council. Work Groups under the direction of the Executive Director and an Interdisciplinary Team will be set up for injured resources and services and/or appropriate categories (eg. terrestrial, nearshore, pelagic) to develop information on progress to date, testable hypotheses, research projects, and restoration implementation projects.
8. Science Review Board meetings will be open to the public.
9. Staff support will be provided by the Executive Director.
10. The Science Review Board will hold work sessions to synthesize research and monitoring information.
11. The Science Review Board will participate in an annual workshop which will be conducted to disseminate what has been learned and what projects and/or modifications of projects need to be considered for the coming year. The Board will also participate in development of the annual report to the public.

DRAFT

Qualifications and Membership:

1. Members must be recognized experts in their field of expertise with proven track records, must have a multi-disciplinary approach to problem solving, and must have demonstrated professional integrity.
2. Since continuity is important, prior knowledge of this oil spill is desirable.
3. The Board will consist of six to eight members including the Chief Scientist and needs to cover the following disciplines:
 - A. Archaeology
 - B. Birds
 - C. Ecotoxicology/chemistry
 - D. Fish
 - E. Intertidal/Subtidal
 - F. Marine Mammals
 - G. OceanographyAdditional expertise on specific topics will be covered as necessary from appropriate sources.
4. The Chief Scientist will chair the Board (including calling meetings, setting agendas, and conveying results).
5. Members will be appointed by the Executive Director following consultation with the Chief Scientist, the agencies, and interested public and confirmed by the Trustee Council.
6. The Executive Director will conduct an annual performance review of the Science Review Board and submit a report with recommendations to the Trustee Council. Members will serve at the pleasure of the Trustee Council.
7. Members may not be contractually involved in the implementation of projects. Even the appearance of a conflict of interest must be avoided.

DRAFT