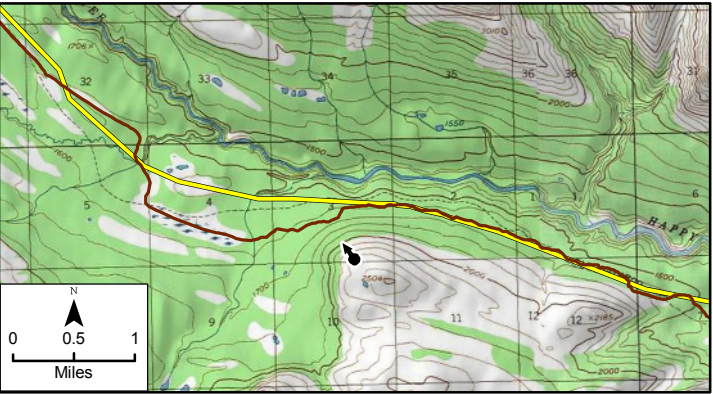


Existing conditions





Simulation This image has been scaled to fit on 11x17 paper, and therefore should be used for illustrative purposed only. To view this simulation at an accurate scale, images should be printed on a 36x56 size paper, and viewed at approximately 2 feet



- Legend**
- Viewpoint Location
  - Iditarod National Historic Trail (Modern Race Route)
  - Proposed Gasline Route

**Photographic Information**  
**View direct northwest across Happy River Valley and Iditarod National Historic Trail**  
Time of photograph: 2:50 PM  
Date of photograph: 9-22-13  
Weather condition: Partly Cloudy  
Viewing direction: Northwest  
Latitude: 62° 1' 6.18" N  
Longitude: 152° 32' 57.09" W  
Lighting condition: Sidelight

	<b>DONLIN GOLD PROJECT EIS</b>	
SIMULATION OF PROPOSED OPERATIONAL ROW WHERE IT CROSSES THE ALASKA RANGE PHYSIOGRAPHIC PROVINCE HAPPY VALLEY-ELEVATED VANTAGE POINT)		
NOVEMBER 2015		FIGURE 3.17-23A