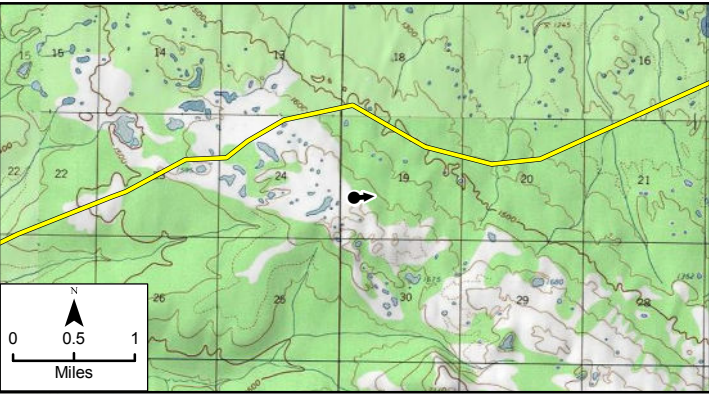


Existing conditions




Simulation This image has been scaled to fit on 11x17 paper, and therefore should be used for illustrative purposed only. To view this simulation at an accurate scale, images should be printed on a 36x56 size paper, and viewed at approximately 2 feet




- Legend**
- Viewpoint Location
 - Proposed Gasline Route

Photographic Information
View directed east toward Big River
Time of photograph: 10:46 AM
Date of photograph: 9-22-13
Weather condition: Clear
Viewing direction: East
Latitude: 62° 14' 22.955" N
Longitude: 154° 55' 19.353" W
Lighting condition: Sidelight



DONLIN GOLD
PROJECT EIS



SIMULATION OF PROPOSED
OPERATIONAL ROW WHERE IT
CROSSES THE NUSHAGAK-BIG RIVER
HILLS PHYSIOGRAPHIC PROVINCE
(BIG RIVER)

NOVEMBER 2015