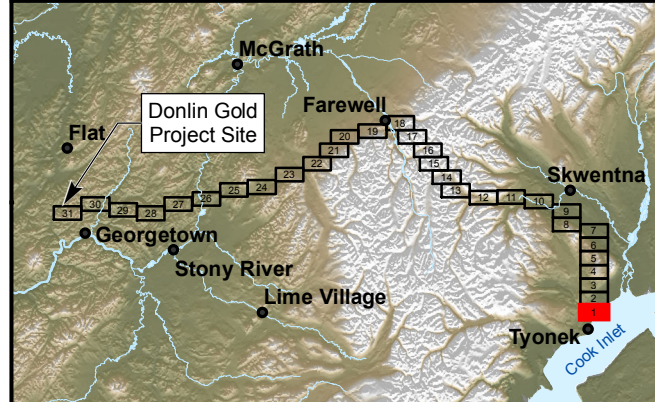
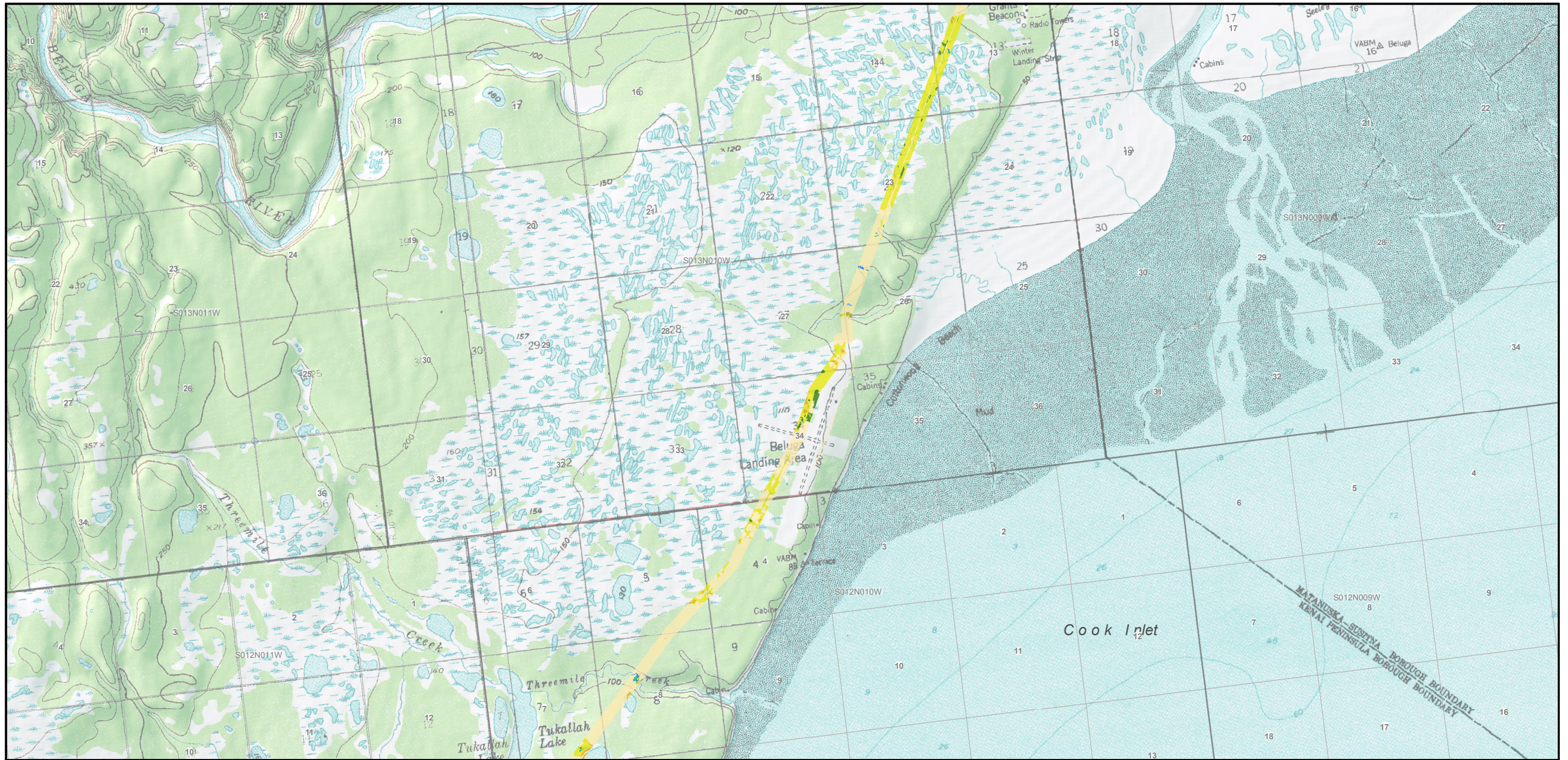


## **APPENDIX L**

### **Wetlands Pipeline Strip Maps**

This page intentionally left blank.



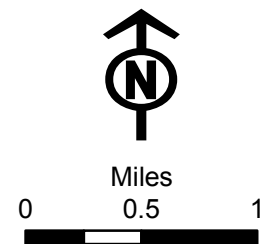


- Wetlands, Michael Baker 2017a, 2017b**
- Evergreen Forests
  - Deciduous Forests
  - Mixed Forests
  - Herbaceous
  - Coniferous Scrub
  - Shrubs
  - Rivers/Lakes
  - Ponds
  - Uplands

- Proposed Pipeline Facilities**
- Permafrost - Thaw Stable
  - Permafrost - Thaw Unstable
  - Milepost
  - Block Valves
  - Water Extraction Site
  - Proposed Natural Gas Pipeline
  - Proposed North Option
  - Airstrip Access
  - Winter Access Route

- Gas Line Access
- Material Site Access
- Shoofly Access
- Water Extraction Site Access
- Work Pad Access
- Airstrip
- Camp
- Material site
- Pipe Storage Yard
- Temporary HDD Work

- Work Pad
- Compressor Station
- Distribution Station
- Fault Crossing
- Launcher/Receiver Station
- Metering Station



**DONLIN GOLD**  
**PROJECT EIS**



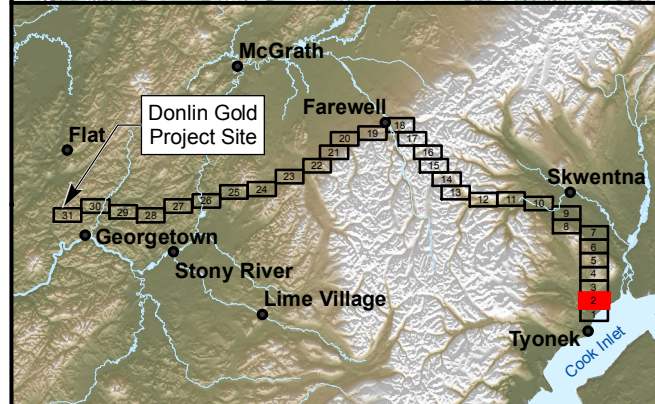
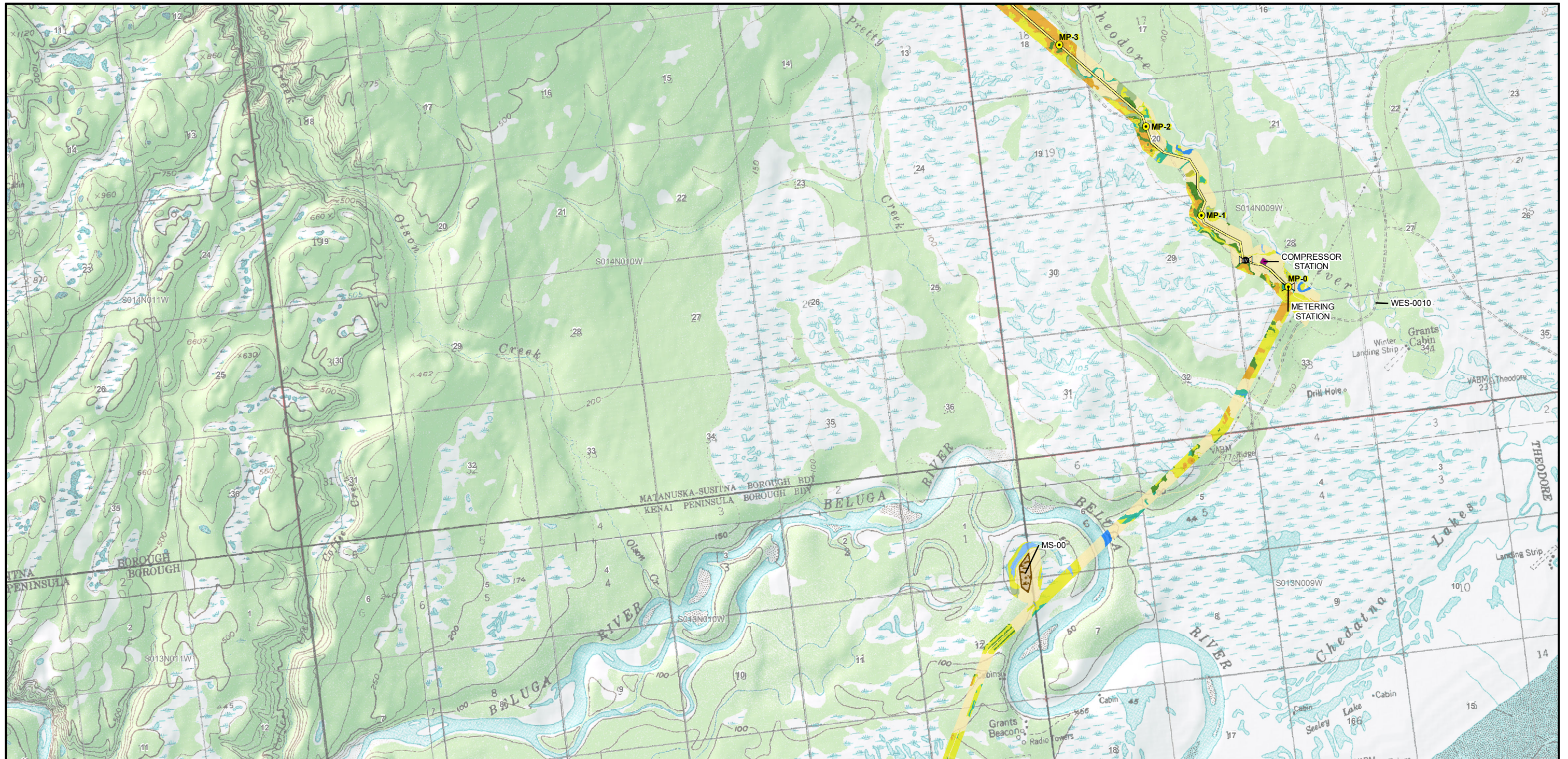
# PIPELINE ALIGNMENT WITH WETLANDS, FACILITIES, AND TRANSMISSION LINE

MAP 1 of 31

JANUARY 2018

APPENDIX L





**Wetlands, Michael Baker 2017a, 2017b**

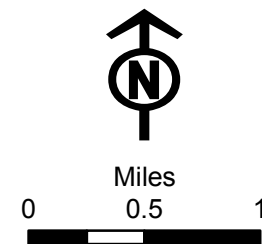
- Evergreen Forests
- Deciduous Forests
- Mixed Forests
- Herbaceous
- Coniferous Scrub
- Shrubs
- Rivers/Lakes
- Ponds
- Uplands

**Proposed Pipeline Facilities**

- Permafrost - Thaw Stable
- Permafrost - Thaw Unstable
- Milepost
- Block Valves
- Water Extraction Site
- Proposed Natural Gas Pipeline
- Proposed North Option
- Airstrip Access
- Winter Access Route

- Gas Line Access
- Material Site Access
- Shoofly Access
- Water Extraction Site Access
- Work Pad Access
- Airstrip
- Camp
- Material site
- Pipe Storage Yard
- Temporary HDD Work

- Work Pad
- Compressor Station
- Distribution Station
- Fault Crossing
- Launcher/Receiver Station
- Metering Station



**DONLIN GOLD**  
**PROJECT EIS**



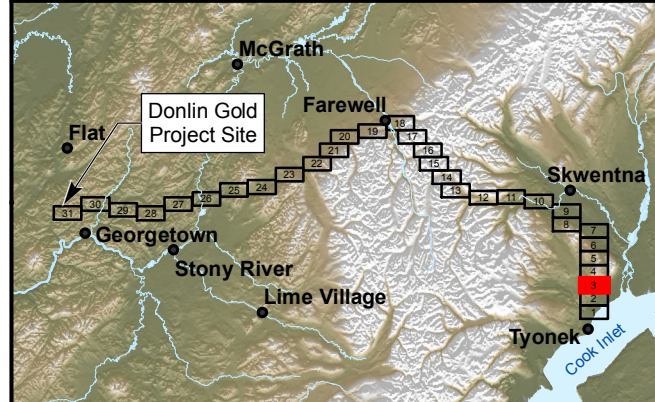
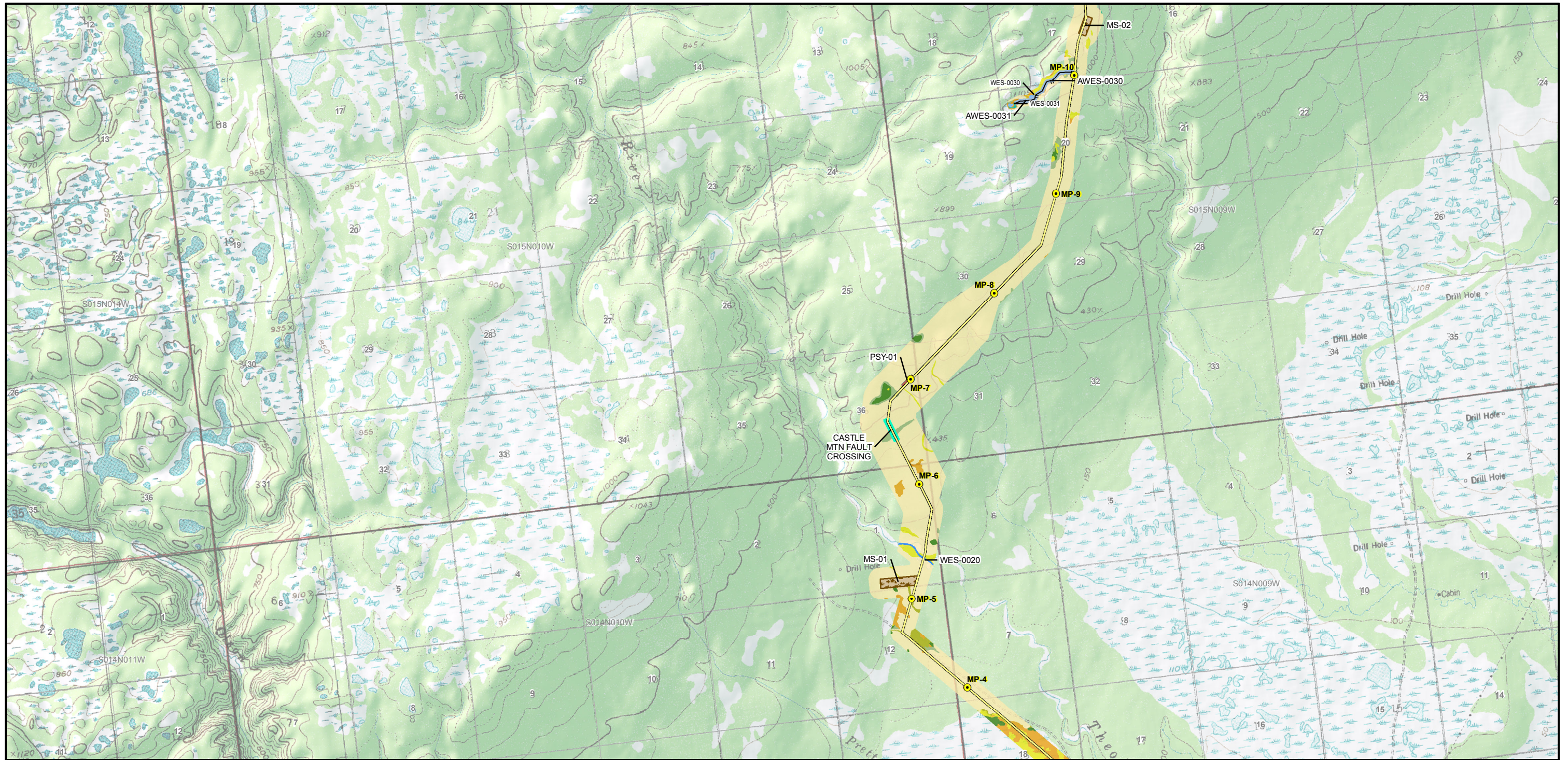
**PIPELINE ALIGNMENT WITH  
WETLANDS, FACILITIES, AND  
TRANSMISSION LINE**

MAP 2 of 31

JANUARY 2018

APPENDIX L





**Wetlands, Michael Baker 2017a, 2017b**

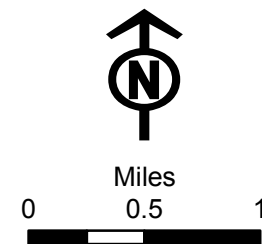
- Evergreen Forests
- Deciduous Forests
- Mixed Forests
- Herbaceous
- Coniferous Scrub
- Shrubs
- Rivers/Lakes
- Ponds
- Uplands

**Proposed Pipeline Facilities**

- Permafrost - Thaw Stable
- Permafrost - Thaw Unstable
- Milepost
- Block Valves
- Water Extraction Site
- Proposed Natural Gas Pipeline
- Proposed North Option
- Airstrip Access
- Winter Access Route

- Gas Line Access
- Material Site Access
- Shoofly Access
- Water Extraction Site Access
- Work Pad Access
- Airstrip
- Camp
- Material site
- Pipe Storage Yard
- Temporary HDD Work

- Work Pad
- Compressor Station
- Distribution Station
- Fault Crossing
- Launcher/Receiver Station
- Metering Station



**DONLIN GOLD**  
**PROJECT EIS**



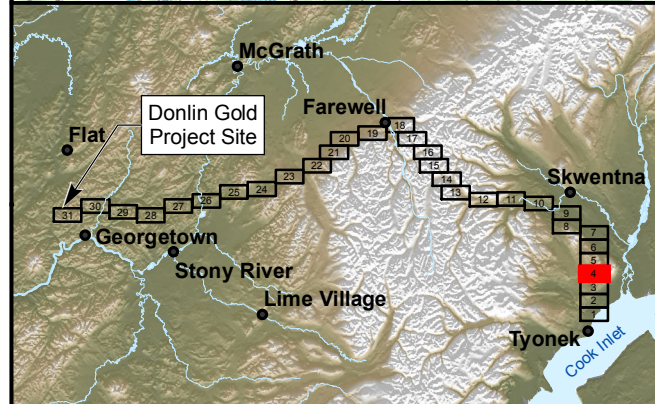
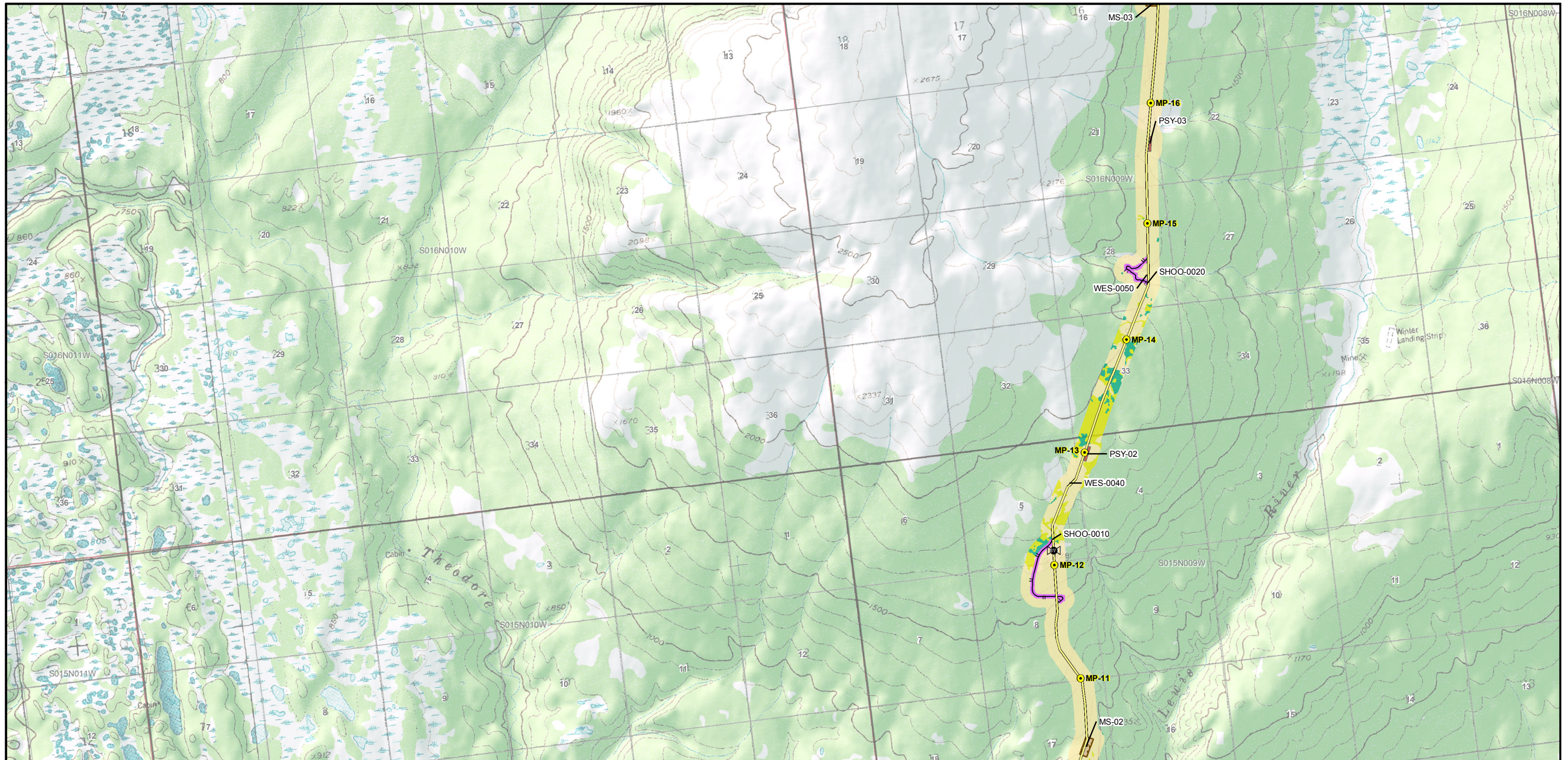
**PIPELINE ALIGNMENT WITH  
WETLANDS, FACILITIES, AND  
TRANSMISSION LINE**

MAP 3 of 31

JANUARY 2018

APPENDIX L





**Wetlands, Michael Baker 2017a, 2017b**

- Evergreen Forests
- Deciduous Forests
- Mixed Forests
- Herbaceous
- Coniferous Scrub
- Shrubs
- Rivers/Lakes
- Ponds
- Uplands

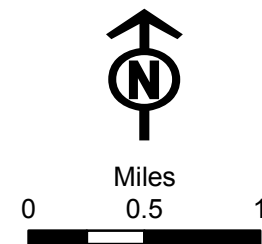
- Permafrost - Thaw Stable
- Permafrost - Thaw Unstable

**Proposed Pipeline Facilities**

- Milepost
- Block Valves
- Water Extraction Site
- Proposed Natural Gas Pipeline
- Proposed North Option
- Airstrip Access
- Winter Access Route

- Gas Line Access
- Material Site Access
- Shoofly Access
- Water Extraction Site Access
- Work Pad Access
- Airstrip
- Camp
- Material site
- Pipe Storage Yard
- Temporary HDD Work

- Work Pad
- Compressor Station
- Distribution Station
- Fault Crossing
- Launcher/Receiver Station
- Metering Station



**DONLIN GOLD**  
**PROJECT EIS**



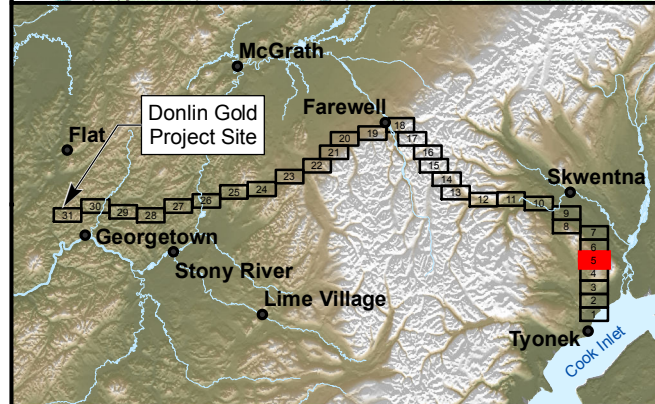
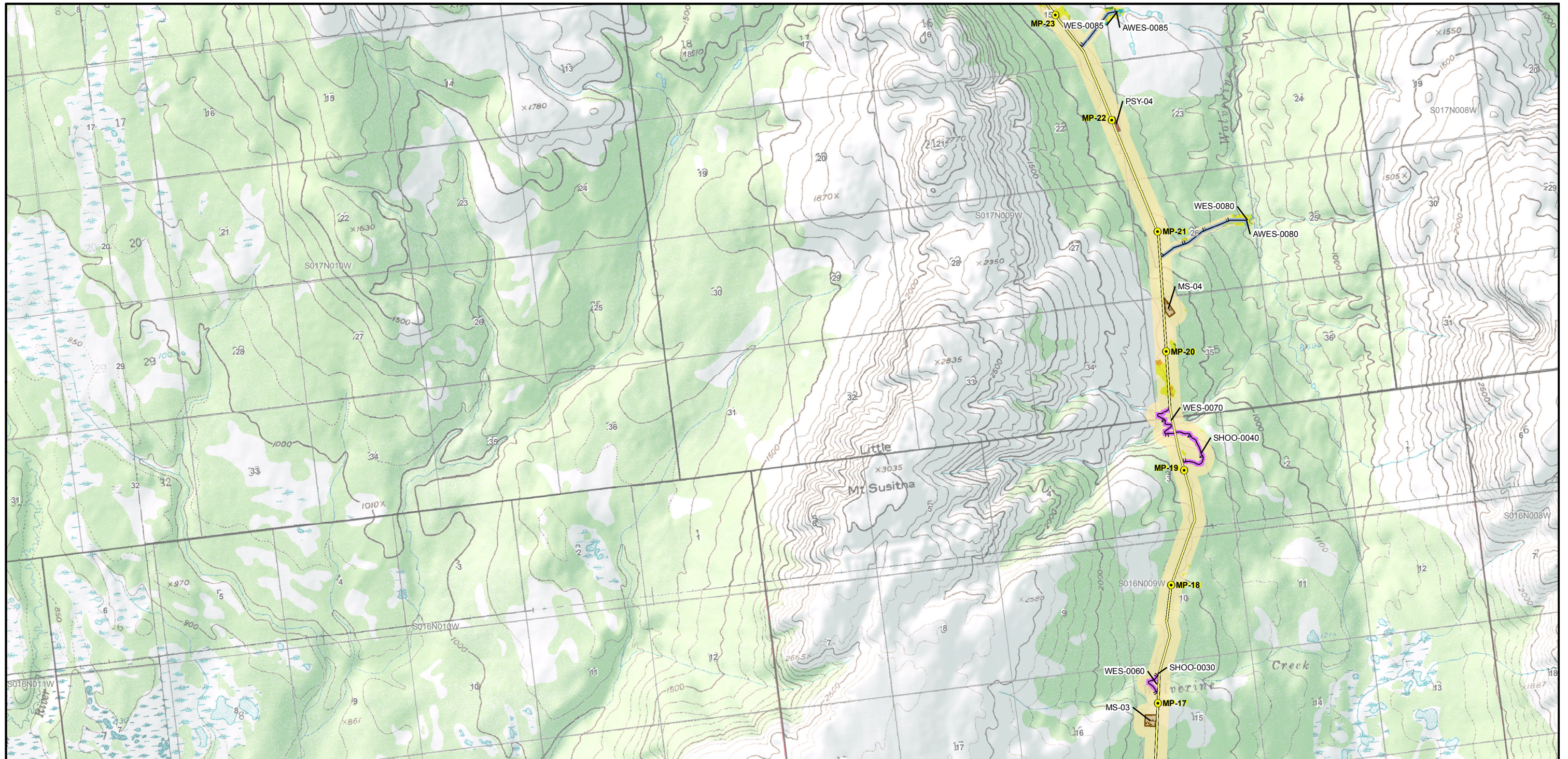
**PIPELINE ALIGNMENT WITH  
WETLANDS, FACILITIES, AND  
TRANSMISSION LINE**

MAP 4 of 31

JANUARY 2018

APPENDIX L





**Wetlands, Michael Baker 2017a, 2017b**

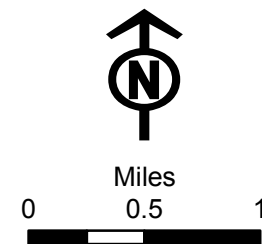
- Evergreen Forests
- Deciduous Forests
- Mixed Forests
- Herbaceous
- Coniferous Scrub
- Shrubs
- Rivers/Lakes
- Ponds
- Uplands

**Proposed Pipeline Facilities**

- Permafrost - Thaw Stable
- Permafrost - Thaw Unstable
- Milepost
- Block Valves
- Water Extraction Site
- Proposed Natural Gas Pipeline
- Proposed North Option
- Airstrip Access
- Winter Access Route

- Gas Line Access
- Material Site Access
- Shoofly Access
- Water Extraction Site Access
- Work Pad Access
- Airstrip
- Camp
- Material site
- Pipe Storage Yard
- Temporary HDD Work

- Work Pad
- Compressor Station
- Distribution Station
- Fault Crossing
- Launcher/Receiver Station
- Metering Station



**DONLIN GOLD**  
**PROJECT EIS**



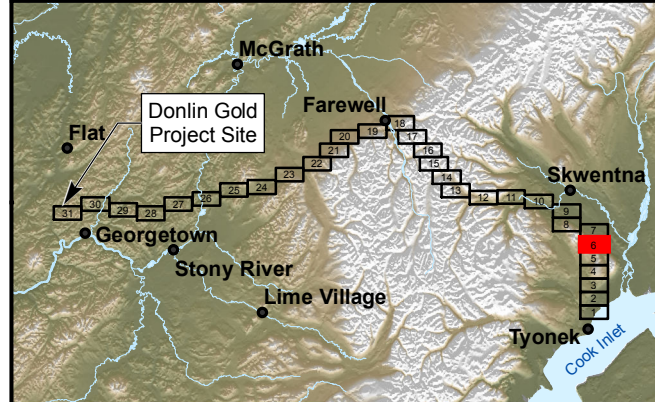
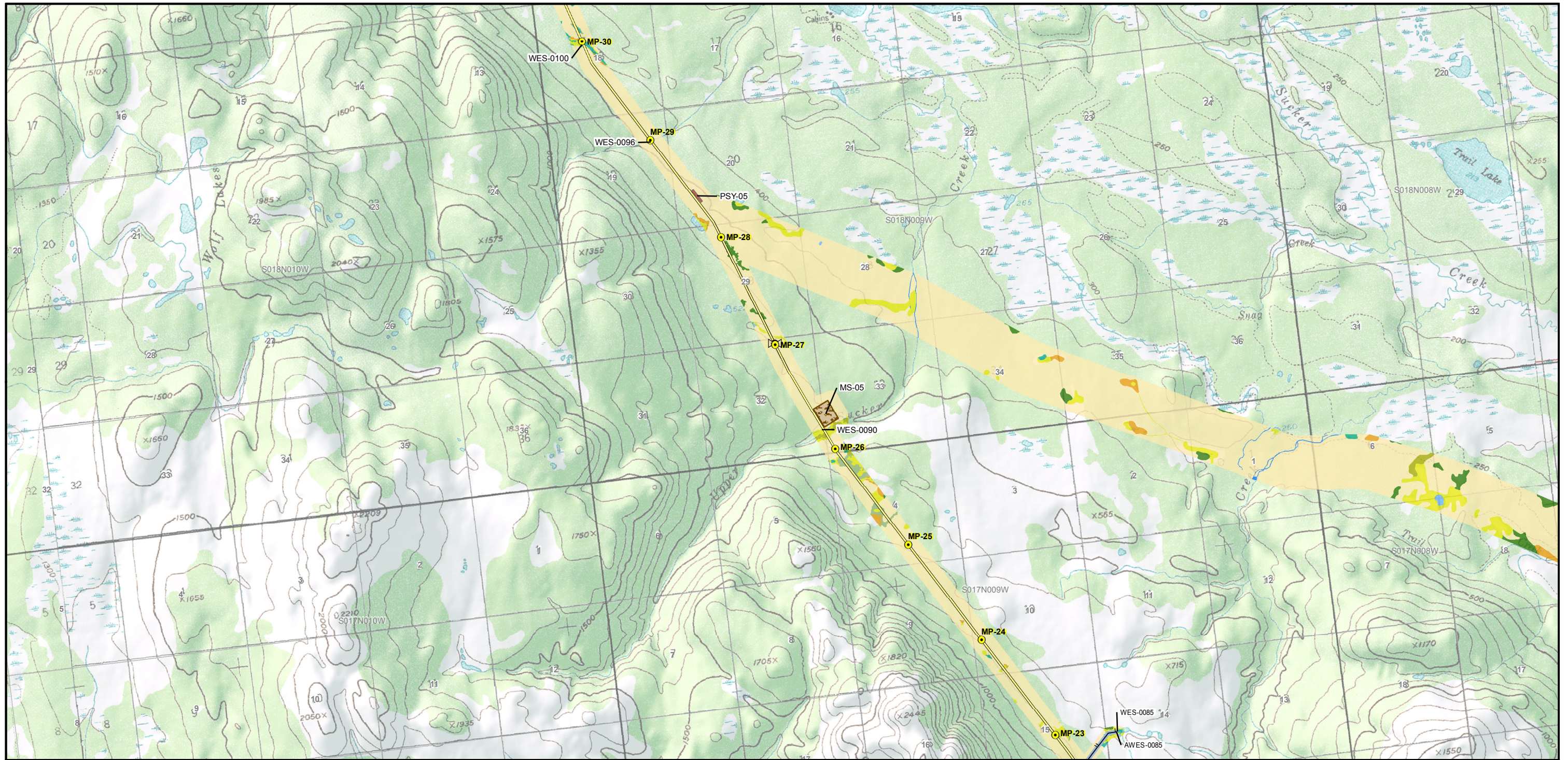
**PIPELINE ALIGNMENT WITH  
WETLANDS, FACILITIES, AND  
TRANSMISSION LINE**

MAP 5 of 31

JANUARY 2018

APPENDIX L





**Wetlands, Michael Baker 2017a, 2017b**

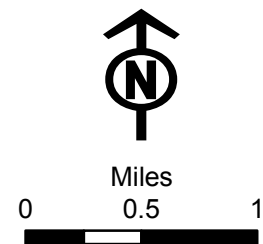
- Evergreen Forests
- Deciduous Forests
- Mixed Forests
- Herbaceous
- Coniferous Scrub
- Shrubs
- Rivers/Lakes
- Ponds
- Uplands

**Proposed Pipeline Facilities**

- Permafrost - Thaw Stable
- Permafrost - Thaw Unstable
- Milepost
- Block Valves
- Water Extraction Site
- Proposed Natural Gas Pipeline
- Proposed North Option
- Airstrip Access
- Winter Access Route

- Gas Line Access
- Material Site Access
- Shoofly Access
- Water Extraction Site Access
- Work Pad Access
- Airstrip
- Camp
- Material site
- Pipe Storage Yard
- Temporary HDD Work

- Work Pad
- Compressor Station
- Distribution Station
- Fault Crossing
- Launcher/Receiver Station
- Metering Station



**DONLIN GOLD  
PROJECT EIS**



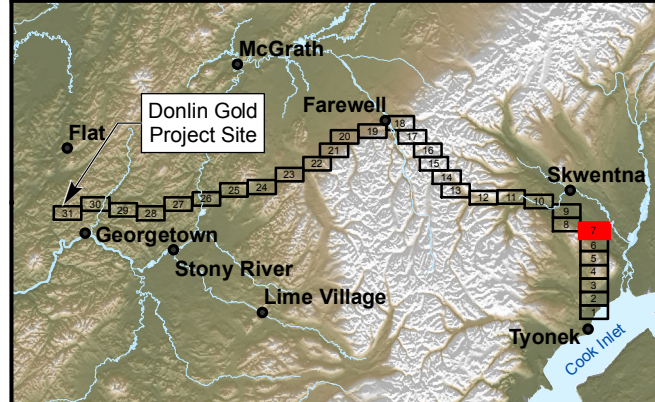
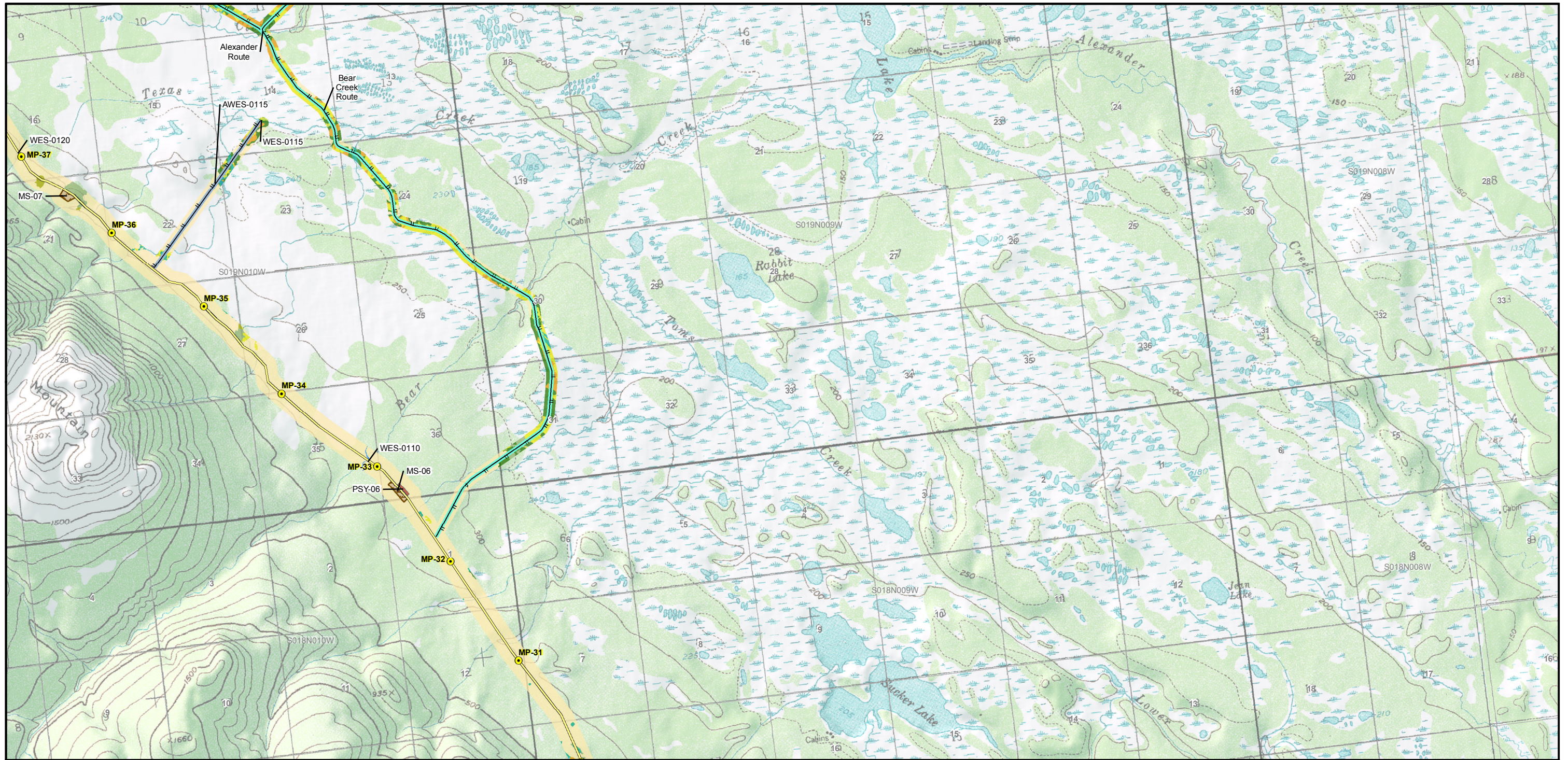
**PIPELINE ALIGNMENT WITH  
WETLANDS, FACILITIES, AND  
TRANSMISSION LINE**

MAP 6 of 31

JANUARY 2018

APPENDIX L



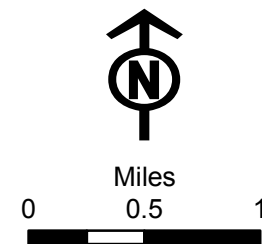


- Wetlands, Michael Baker 2017a, 2017b**
- Evergreen Forests
  - Deciduous Forests
  - Mixed Forests
  - Herbaceous
  - Coniferous Scrub
  - Shrubs
  - Rivers/Lakes
  - Ponds
  - Uplands

- Proposed Pipeline Facilities**
- Permafrost - Thaw Stable
  - Permafrost - Thaw Unstable
  - Milepost
  - Block Valves
  - Water Extraction Site
  - Proposed Natural Gas Pipeline
  - Proposed North Option
  - Airstrip Access
  - Winter Access Route

- Gas Line Access
- Material Site Access
- Shoofly Access
- Water Extraction Site Access
- Work Pad Access
- Airstrip
- Camp
- Material site
- Pipe Storage Yard
- Temporary HDD Work

- Work Pad
- Compressor Station
- Distribution Station
- Fault Crossing
- Launcher/Receiver Station
- Metering Station



**DONLIN GOLD**  
**PROJECT EIS**



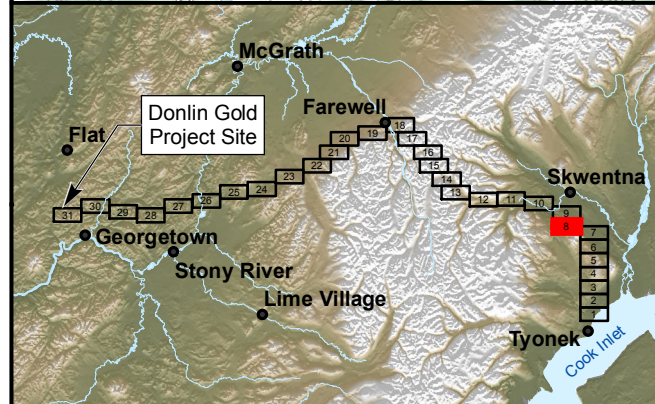
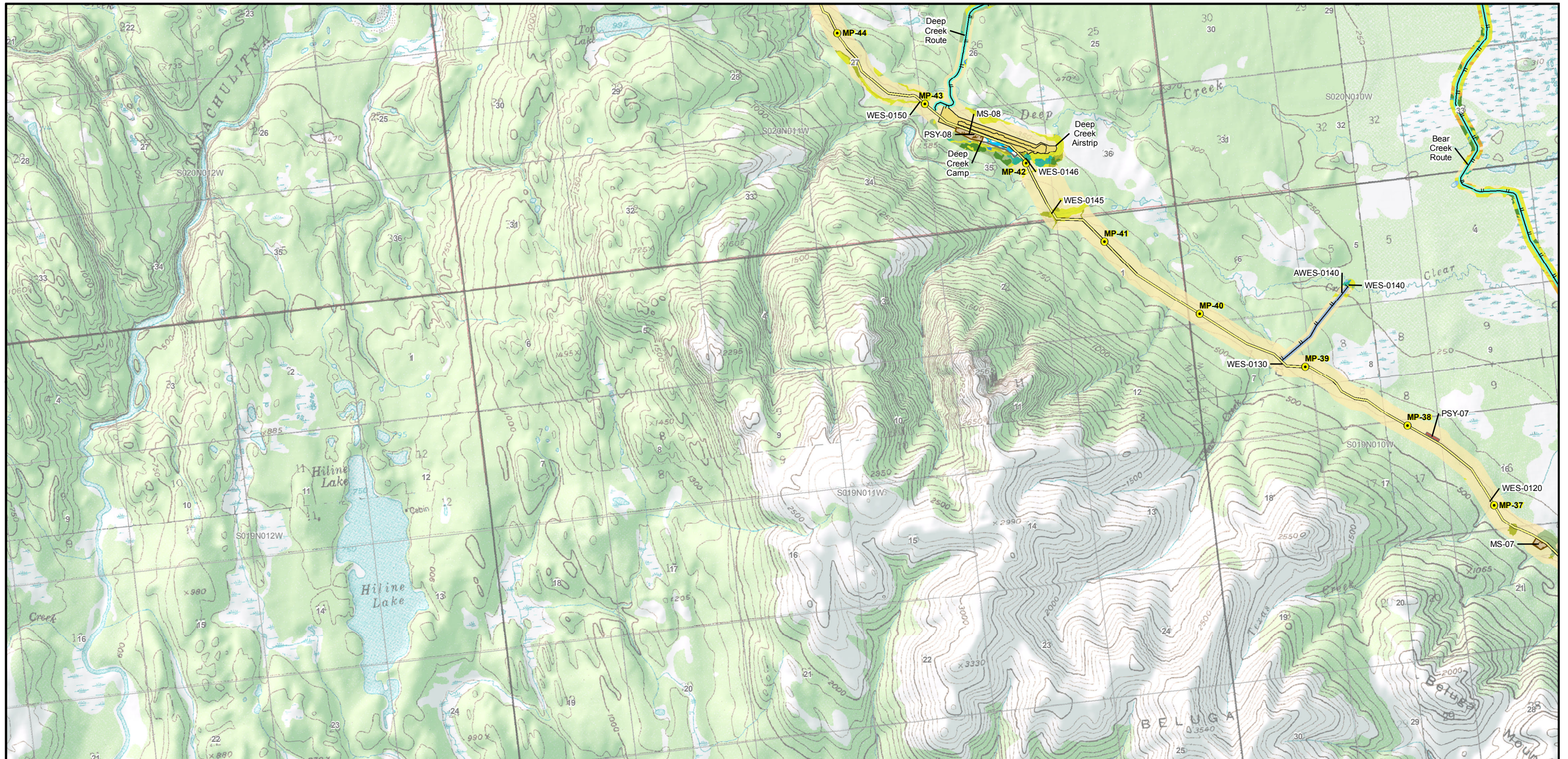
## PIPELINE ALIGNMENT WITH WETLANDS, FACILITIES, AND TRANSMISSION LINE

MAP 7 of 31

JANUARY 2018

APPENDIX L





**Wetlands, Michael Baker 2017a, 2017b**

- Evergreen Forests
- Deciduous Forests
- Mixed Forests
- Herbaceous
- Coniferous Scrub
- Shrubs
- Rivers/Lakes
- Ponds
- Uplands

**Permafrost - Thaw Stable**

- Permafrost - Thaw Unstable

**Proposed Pipeline Facilities**

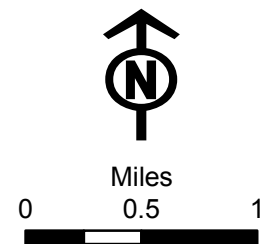
- Milepost
- Block Valves
- Water Extraction Site
- Proposed Natural Gas Pipeline
- Proposed North Option
- Airstrip Access
- Winter Access Route

**Gas Line Access**

- Material Site Access
- Shoofly Access
- Water Extraction Site Access
- Work Pad Access
- Airstrip
- Camp
- Material site
- Pipe Storage Yard
- Temporary HDD Work

**Work Pad**

- Compressor Station
- Distribution Station
- Fault Crossing
- Launcher/Receiver Station
- Metering Station



**DONLIN GOLD**  
**PROJECT EIS**



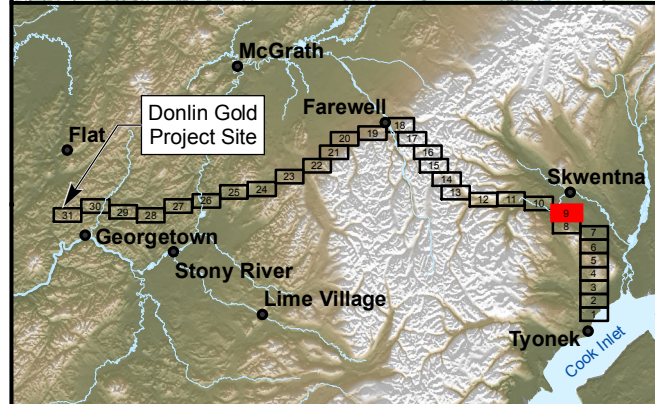
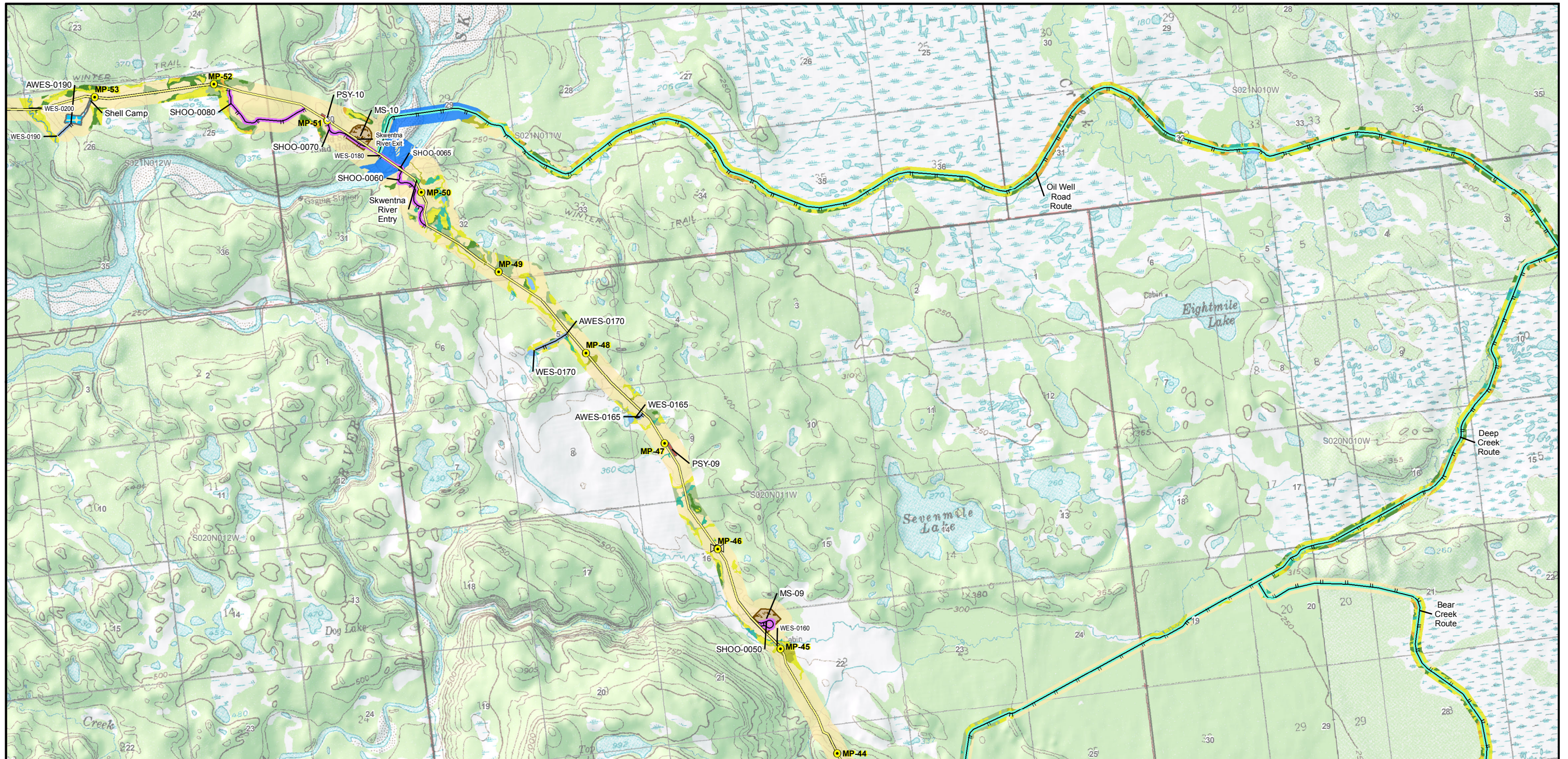
**PIPELINE ALIGNMENT WITH  
WETLANDS, FACILITIES, AND  
TRANSMISSION LINE**

MAP 8 of 31

JANUARY 2018

APPENDIX L





**Wetlands, Michael Baker 2017a, 2017b**

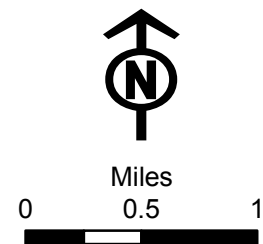
- Evergreen Forests
- Deciduous Forests
- Mixed Forests
- Herbaceous
- Coniferous Scrub
- Shrubs
- Rivers/Lakes
- Ponds
- Uplands

**Proposed Pipeline Facilities**

- Permafrost - Thaw Stable
- Permafrost - Thaw Unstable
- Milepost
- Block Valves
- Water Extraction Site
- Proposed Natural Gas Pipeline
- Proposed North Option
- Airstrip Access
- Winter Access Route

- Gas Line Access
- Material Site Access
- Shoofly Access
- Water Extraction Site Access
- Work Pad Access
- Airstrip
- Material site
- Pipe Storage Yard
- Temporary HDD Work

- Work Pad
- Compressor Station
- Distribution Station
- Fault Crossing
- Launcher/Receiver Station
- Metering Station



**DONLIN GOLD**  
**PROJECT EIS**



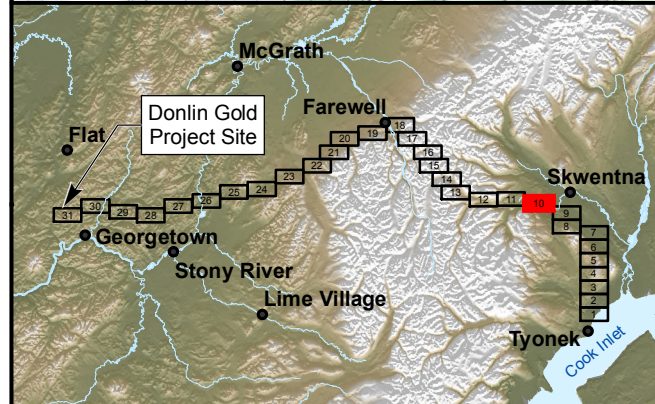
**PIPELINE ALIGNMENT WITH  
WETLANDS, FACILITIES, AND  
TRANSMISSION LINE**

MAP 9 of 31

JANUARY 2018

APPENDIX L





**Wetlands, Michael Baker 2017a, 2017b**

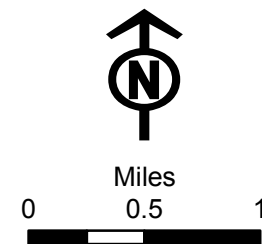
- Evergreen Forests
- Deciduous Forests
- Mixed Forests
- Herbaceous
- Coniferous Scrub
- Shrubs
- Rivers/Lakes
- Ponds
- Uplands

**Proposed Pipeline Facilities**

- Permafrost - Thaw Stable
- Permafrost - Thaw Unstable
- Milepost
- Block Valves
- Water Extraction Site
- Proposed Natural Gas Pipeline
- Proposed North Option
- Airstrip Access
- Winter Access Route

- Gas Line Access
- Material Site Access
- Shoofly Access
- Water Extraction Site Access
- Work Pad Access
- Airstrip
- Camp
- Material site
- Pipe Storage Yard
- Temporary HDD Work

- Work Pad
- Compressor Station
- Distribution Station
- Fault Crossing
- Launcher/Receiver Station
- Metering Station



**DONLIN GOLD  
PROJECT EIS**



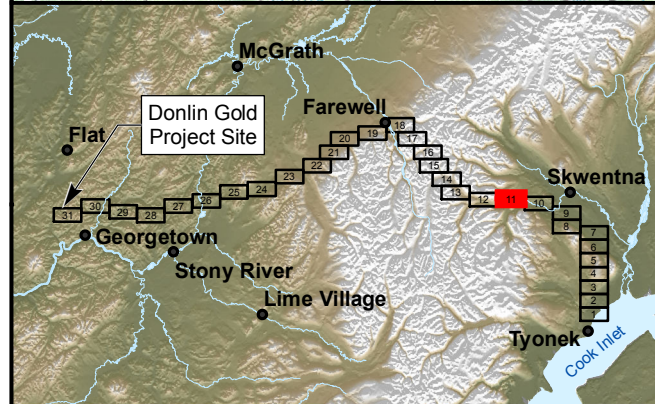
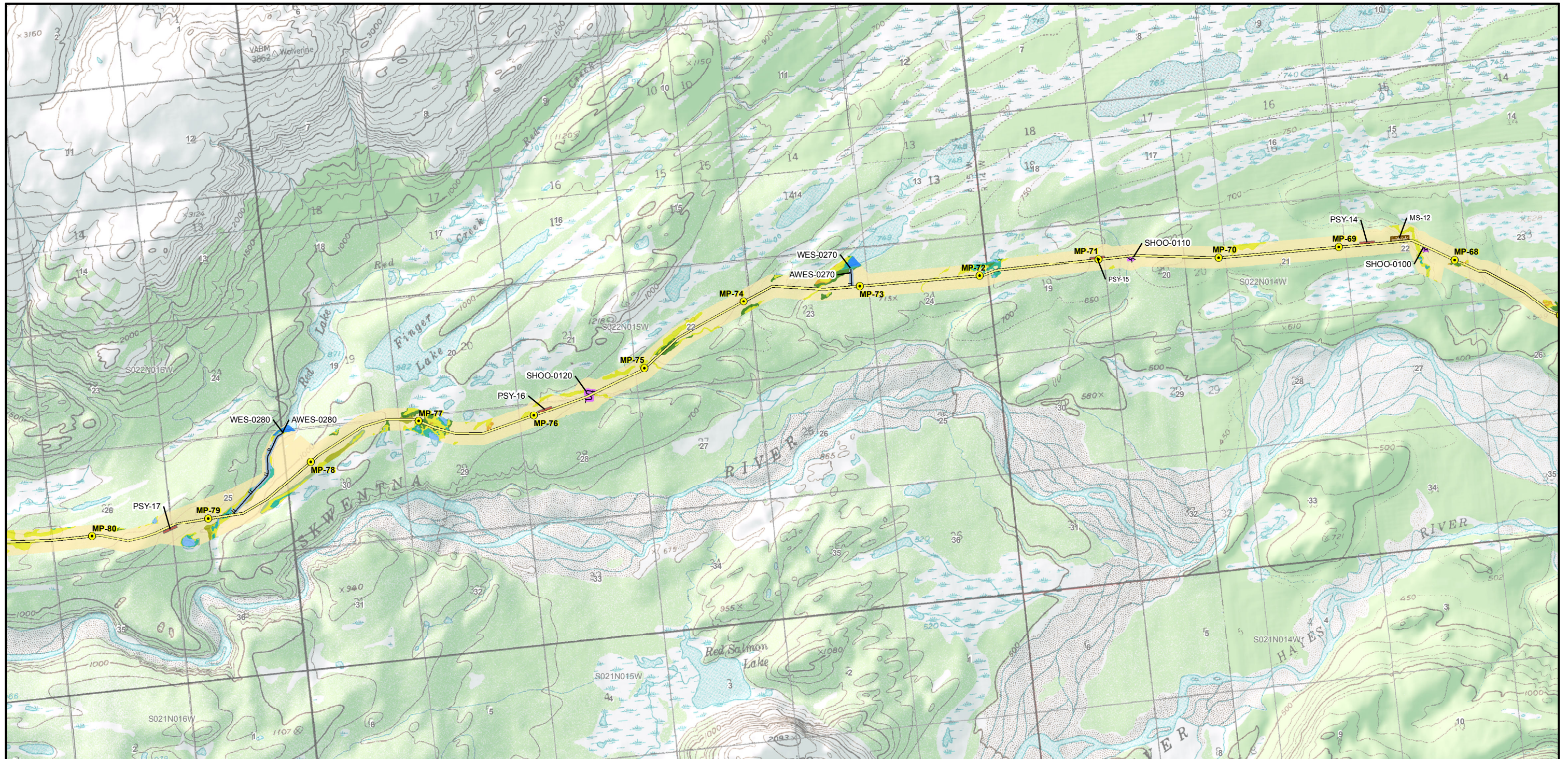
**PIPELINE ALIGNMENT WITH  
WETLANDS, FACILITIES, AND  
TRANSMISSION LINE**

MAP 10 of 31

JANUARY 2018

APPENDIX L





**Wetlands, Michael Baker 2017a, 2017b**

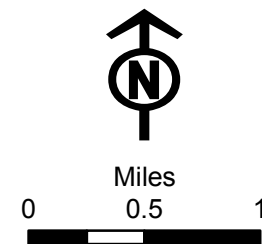
- Evergreen Forests
- Deciduous Forests
- Mixed Forests
- Herbaceous
- Coniferous Scrub
- Shrubs
- Rivers/Lakes
- Ponds
- Uplands

**Proposed Pipeline Facilities**

- Permafrost - Thaw Stable
- Permafrost - Thaw Unstable
- Milepost
- Block Valves
- Water Extraction Site
- Proposed Natural Gas Pipeline
- Proposed North Option
- Airstrip Access
- Winter Access Route

- Gas Line Access
- Material Site Access
- Shoofly Access
- Water Extraction Site Access
- Work Pad Access
- Airstrip
- Camp
- Material site
- Pipe Storage Yard
- Temporary HDD Work

- Work Pad
- Compressor Station
- Distribution Station
- Fault Crossing
- Launcher/Receiver Station
- Metering Station



**DONLIN GOLD**  
**PROJECT EIS**



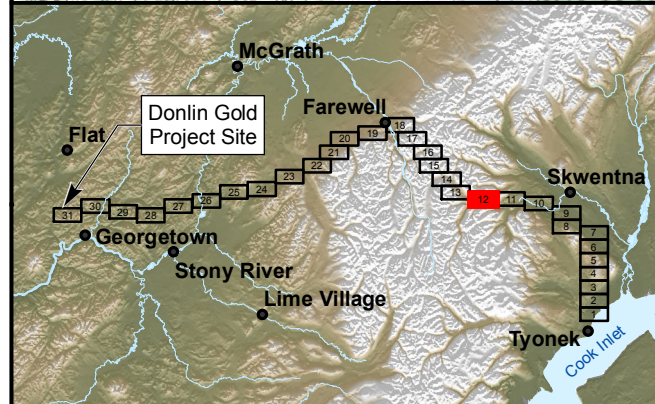
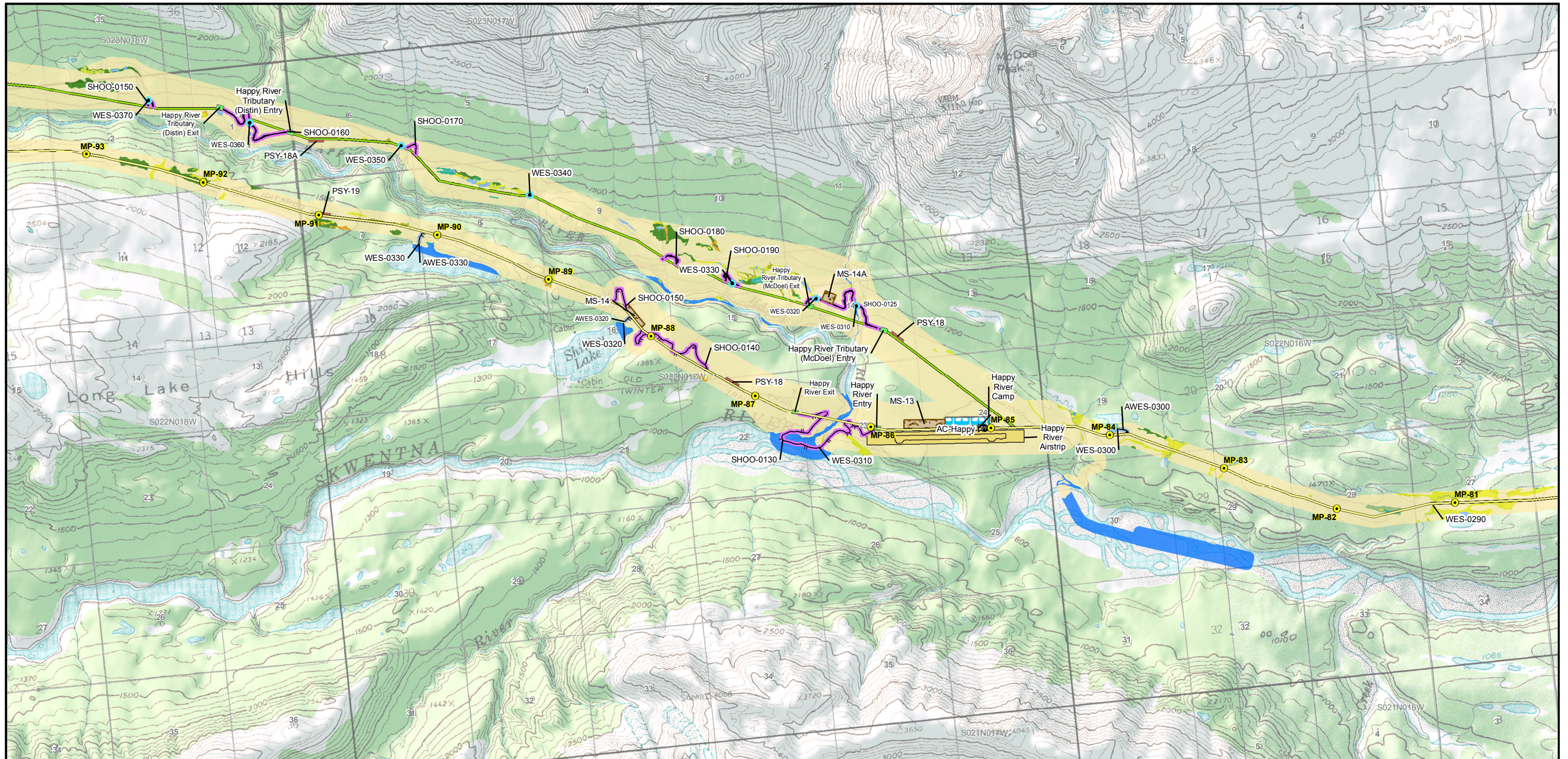
**PIPELINE ALIGNMENT WITH  
WETLANDS, FACILITIES, AND  
TRANSMISSION LINE**

MAP 11 of 31

JANUARY 2018

APPENDIX L





**Wetlands, Michael Baker 2017a, 2017b**

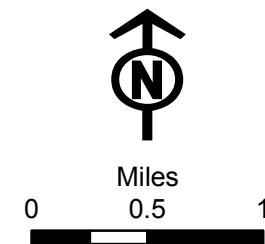
- Evergreen Forests
- Deciduous Forests
- Mixed Forests
- Herbaceous
- Coniferous Scrub
- Shrubs
- Rivers/Lakes
- Ponds
- Uplands

**Proposed Pipeline Facilities**

- Permafrost - Thaw Stable
- Permafrost - Thaw Unstable
- Milepost
- Block Valves
- Water Extraction Site
- Proposed Natural Gas Pipeline
- Proposed North Option
- Airstrip Access
- Winter Access Route

- Gas Line Access
- Material Site Access
- Shoofly Access
- Water Extraction Site Access
- Work Pad Access
- Airstrip
- Camp
- Material site
- Pipe Storage Yard
- Temporary HDD Work

- Work Pad
- Compressor Station
- Distribution Station
- Fault Crossing
- Launcher/Receiver Station
- Metering Station



**DONLIN GOLD**  
**PROJECT EIS**



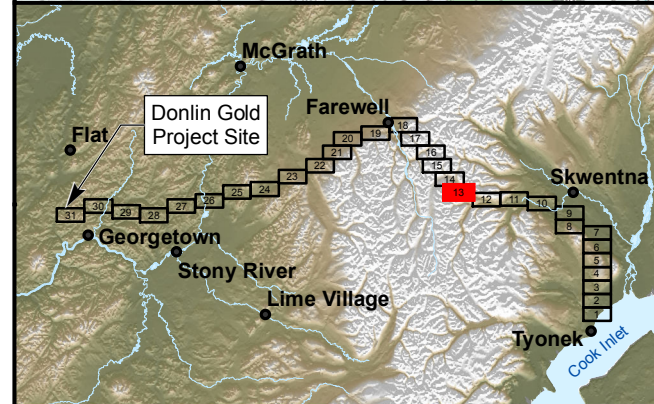
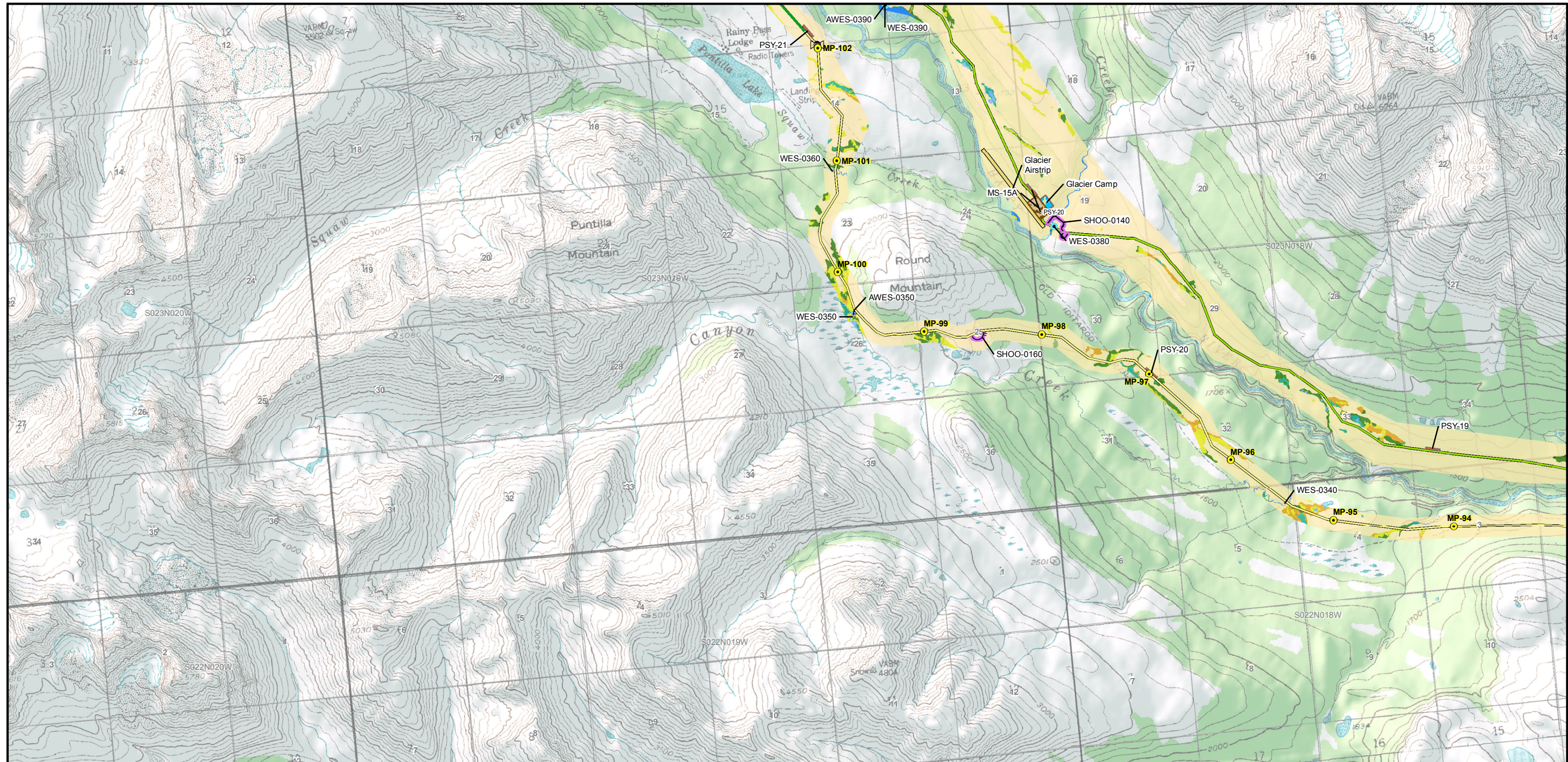
**PIPELINE ALIGNMENT WITH  
WETLANDS, FACILITIES, AND  
TRANSMISSION LINE**

MAP 12 of 31

JANUARY 2018

APPENDIX L



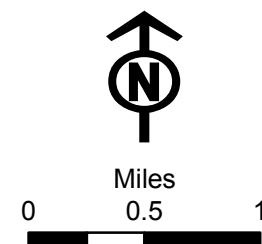



- Wetlands, Michael Baker 2017a, 2017b**
- Evergreen Forests
  - Deciduous Forests
  - Mixed Forests
  - Herbaceous
  - Coniferous Scrub
  - Shrubs
  - Rivers/Lakes
  - Ponds
  - Uplands

- Proposed Pipeline Facilities**
- Permafrost - Thaw Stable
  - Permafrost - Thaw Unstable
  - Milepost
  - Block Valves
  - Water Extraction Site
  - Proposed Natural Gas Pipeline
  - Proposed North Option
  - Airstrip Access
  - Winter Access Route


- Gas Line Access
- Material Site Access
- Shoofly Access
- Water Extraction Site Access
- Work Pad Access
- Airstrip
- Camp
- Material site
- Pipe Storage Yard
- Temporary HDD Work

- Work Pad
- Compressor Station
- Distribution Station
- Fault Crossing
- Launcher/Receiver Station
- Metering Station





**DONLIN GOLD**  
**PROJECT EIS**

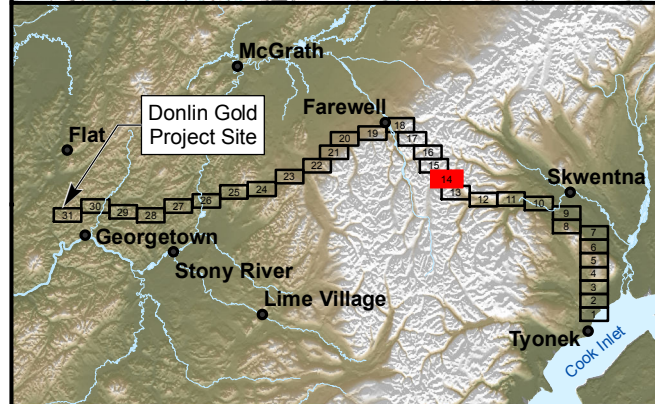
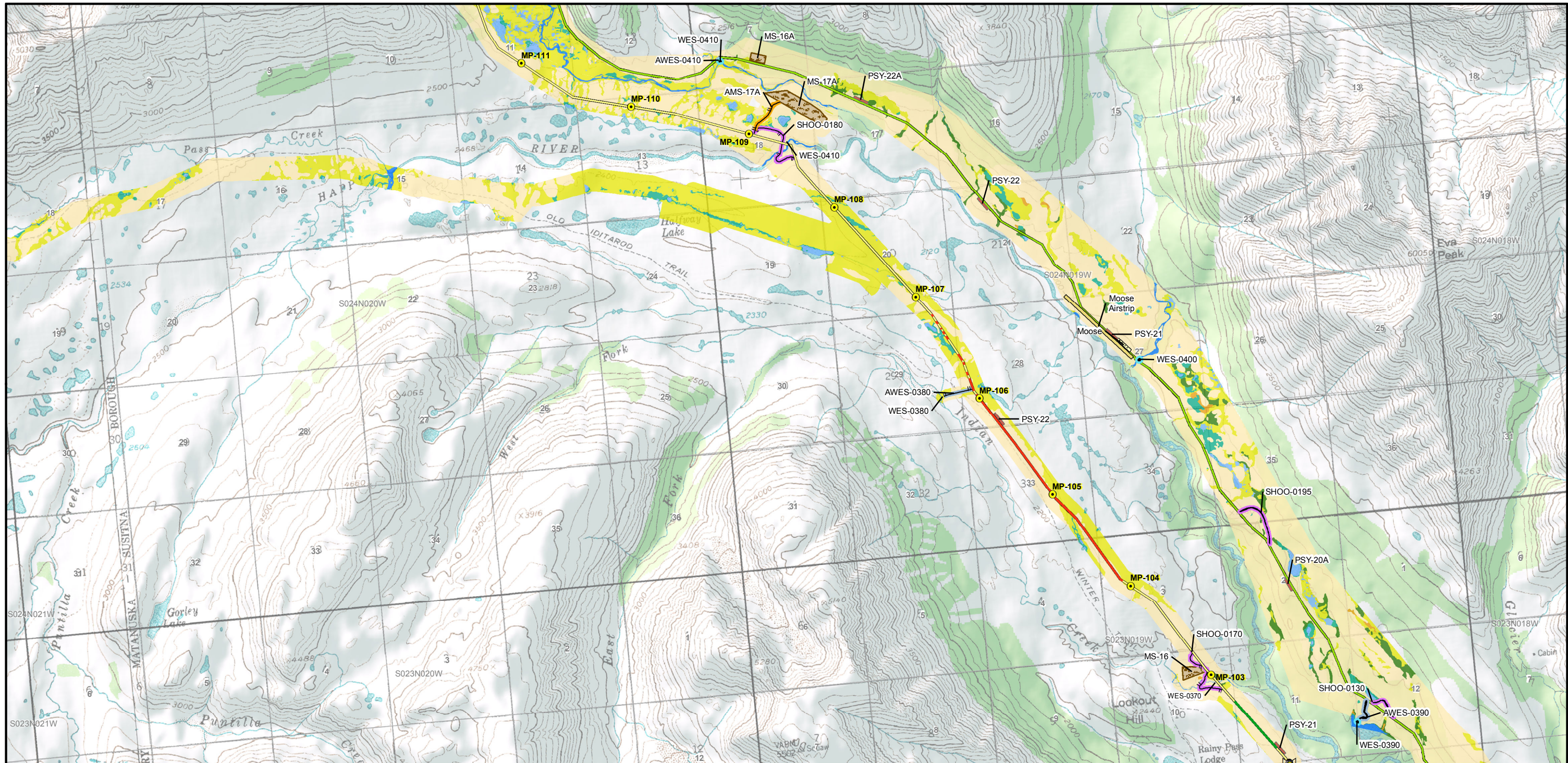


**PIPELINE ALIGNMENT WITH  
WETLANDS, FACILITIES, AND  
TRANSMISSION LINE**  
MAP 13 of 31

JANUARY 2018

APPENDIX L



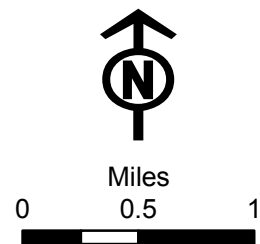


- Wetlands, Michael Baker 2017a, 2017b**
- Evergreen Forests
  - Deciduous Forests
  - Mixed Forests
  - Herbaceous
  - Coniferous Scrub
  - Shrubs
  - Rivers/Lakes
  - Ponds
  - Uplands

- Proposed Pipeline Facilities**
- Permafrost - Thaw Stable
  - Permafrost - Thaw Unstable
  - Milepost
  - Block Valves
  - Water Extraction Site
  - Proposed Natural Gas Pipeline
  - Proposed North Option
  - Airstrip Access
  - Winter Access Route

- Gas Line Access
- Material Site Access
- Shoofly Access
- Water Extraction Site Access
- Work Pad Access
- Airstrip
- Camp
- Material site
- Pipe Storage Yard
- Temporary HDD Work

- Work Pad
- Compressor Station
- Distribution Station
- Fault Crossing
- Launcher/Receiver Station
- Metering Station



**DONLIN GOLD**  
**PROJECT EIS**



# PIPELINE ALIGNMENT WITH WETLANDS, FACILITIES, AND TRANSMISSION LINE

MAP 14 of 31

JANUARY 2018

APPENDIX L



