

MAPPED, EDITED, AND PUBLISHED BY THE GEOLOGICAL SURVEY

CONTROL BY USC&GS AND USCE

COMPILED IN 1960 FROM ARMY MAP SERVICE 1:50,000 SERIES MAPS.
SURVEYED 1955. MAP NOT FIELD CHECKED

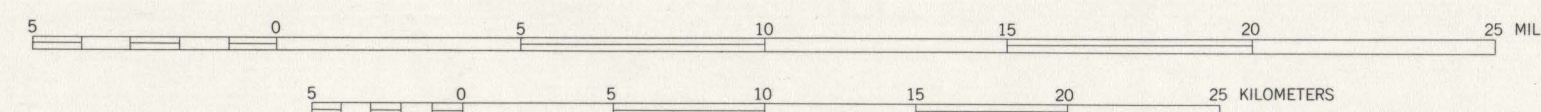
SELECTED HYDROGRAPHIC DATA COMPILED FROM USC&GS CHARTS 9466,
9467 (1956), AND 9469 (1955). THIS INFORMATION IS NOT INTENDED
FOR NAVIGATIONAL PURPOSES

UNIVERSAL TRANSVERSE MERCATOR PROJECTION
1927 NORTH AMERICAN DATUM
10,000-METER UNIVERSAL TRANSVERSE MERCATOR GRID TICS,
ZONE 5, SHOWN IN BLUE

LAND LINES REPRESENT UNSURVEYED AND UNMARKED LOCATIONS
PREDETERMINED BY THE BUREAU OF LAND MANAGEMENT
FOLD U-4, UMIAT MERIDIAN

LAKE ELEVATIONS ARE UNCHECKED

SCALE 1:250,000



CONTOUR INTERVAL 100 FEET

DOTTED LINES REPRESENT 50 FOOT CONTOURS

DATUM IS MEAN SEA LEVEL

DEPTH CURVES AND SOUNDINGS IN FEET. DATUM IS MEAN LOWER LOW WATER

SHORELINE SHOWN REPRESENTS THE APPROXIMATE LINE OF MEAN HIGH WATER

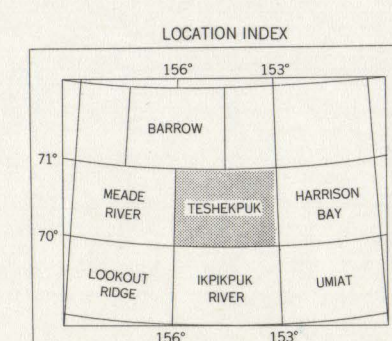
1955 MAGNETIC DECLINATION AT SOUTH EDGE OF SHEET VARIES FROM 25°30' TO 28°30' EAST

THIS MAP IS AVAILABLE IN BOTH SHADED RELIEF AND CONTOUR EDITIONS

FOR SALE BY U.S. GEOLOGICAL SURVEY

FAIRBANKS, ALASKA DENVER 25, COLORADO WASHINGTON 25, D.C.

A FOLDER DESCRIBING TOPOGRAPHIC MAPS AND SYMBOLS IS AVAILABLE ON REQUEST



ROAD CLASSIFICATION

TRAILS

TESHEKPUK, ALASKA
N7000-W15300/60X180

1955