

Map 3.4.1-1
Areas Currently Under Permit
Sources: USDOI BLM, 2004 & 2009 & 2011

Permits
 Special Recreation Permits (SRPs)
 Rights-of-Way (ROWs)
 All other permits

Land Status
 Native Patent or IC
 Native Selected
 Special Area
 NPR-A Boundary

No warranty is made by the Bureau of Land Management as to the accuracy, reliability, or completeness of these data for individual use or aggregate use with other data, or for purposes not intended by BLM. Spatial information may not meet National Map Accuracy Standards. This information may be updated without notification. For official land status information refer to Cadastral Survey plats, Master Title Plats and land status case-files.

Projection: Albers Conic Equal Area referencing NAD83

Bureau of Land Management - Alaska
National Petroleum Reserve - Alaska
Final IAP/EIS



Map 3.4.3-1 Anaktuvuk Pass Subsistence Use Area

Sources: Pedersen 1979

Subsistence Resource

Fish

Anaktuvuk Pass
Community Use Area

Resource use areas change through time
are not fixed entities. Land outside these
areas should not be assumed to be less
important to community residents.

Native Patent or IC within NPR-A
NPR-A Boundary

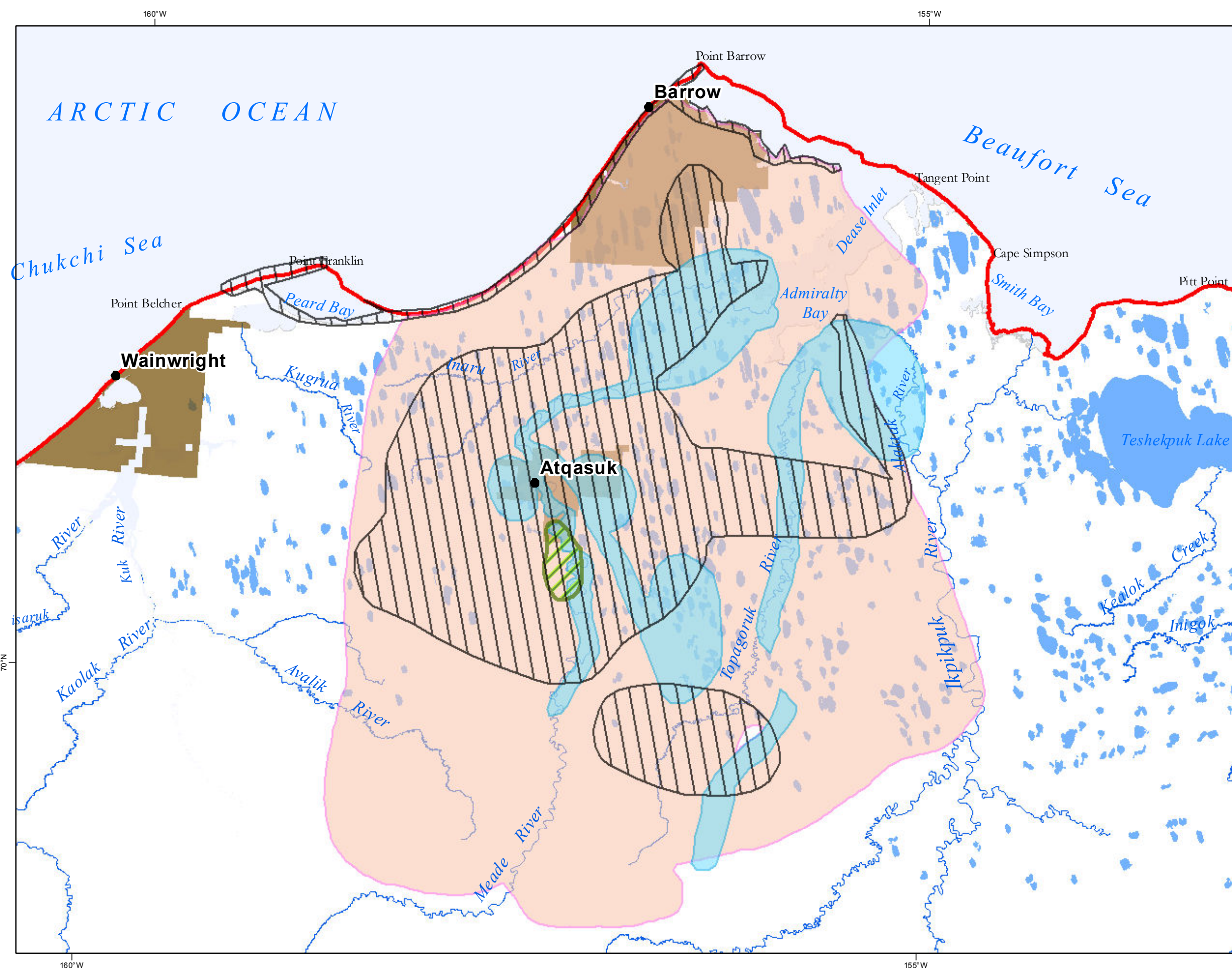
0 6 12 24 36 48
Miles

No warranty is made by the Bureau of Land Management
as to the accuracy, reliability, or completeness of these
data for individual use or aggregate use with other data,
or for purposes not intended by BLM. Spatial information
may not meet National Map Accuracy Standards. This
information may be updated without notification. For
official land status information refer to Cadastral Survey
plats, Master Title Plats and land status case-files.

Projection: Albers Conic Equal Area
referencing NAD83



Bureau of Land Management - Alaska
National Petroleum Reserve - Alaska
Final IAP/EIS



Map 3.4.3-2
Subsistence Use
Areas - Atqasuk

Sources: Pedersen 1979.

Subsistence Resource

Birds

Moose

Fishing

Caribou

Resource use areas change through time
are not fixed entities. Land outside these
areas should not be assumed to be less
important to community residents.

Native Patent or IC


NPR-A Boundary

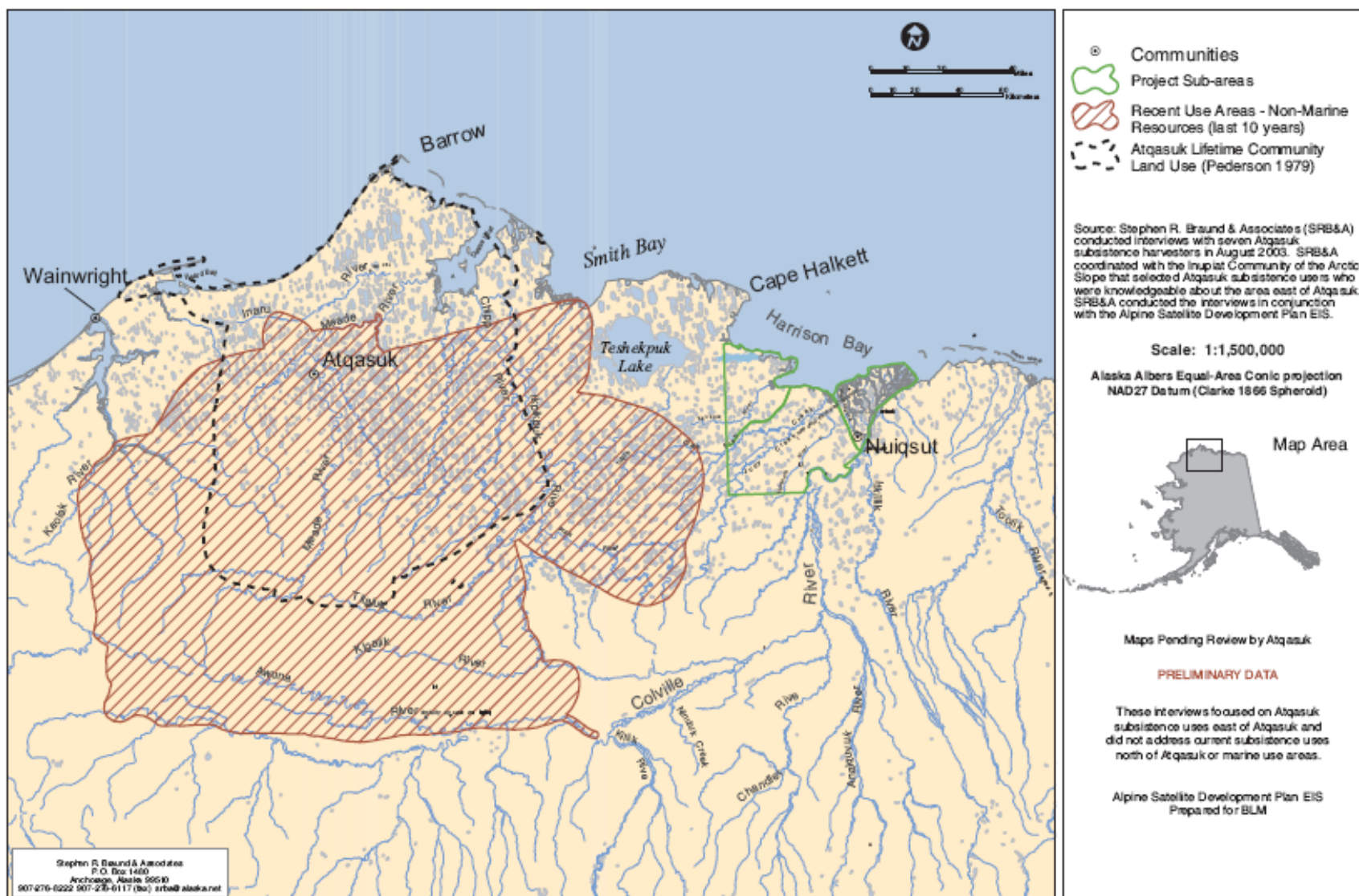
061218

Miles

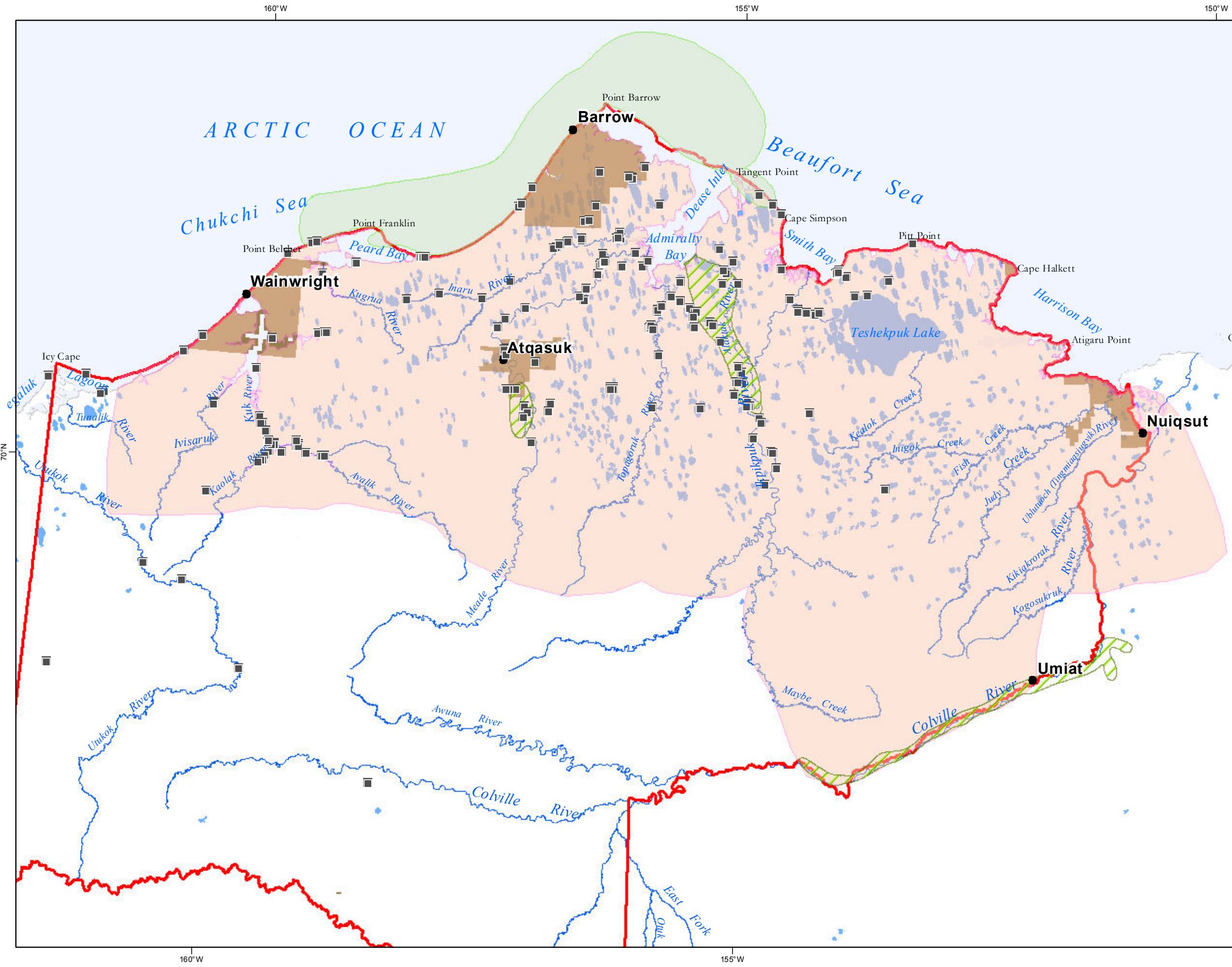
No warranty is made by the Bureau of Land Management
as to the accuracy, reliability, or completeness of these
data for individual use or aggregate use with other data,
or for purposes not intended by BLM. Spatial information
may not meet National Map Accuracy Standards. This
information may be updated without notification. For
official land status information refer to Cadastral Survey
plats, Master Title Plats and land status case-files.

Projection: Albers Conic Equal Area
referencing NAD83


Bureau of Land Management - Alaska
National Petroleum Reserve - Alaska
Final IAP/EIS



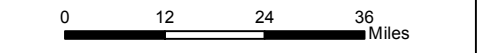
Map3.4.3-3 Atqasuk Partial Subsistence-Use Areas for Non-Marine Resources, 2003.



Map 3.4.3-4
North Slope Borough
Subsistence
Cabins and Fixed
Campsites &
Barrow Subsistence Use
Areas for Whale, Moose
and Caribou

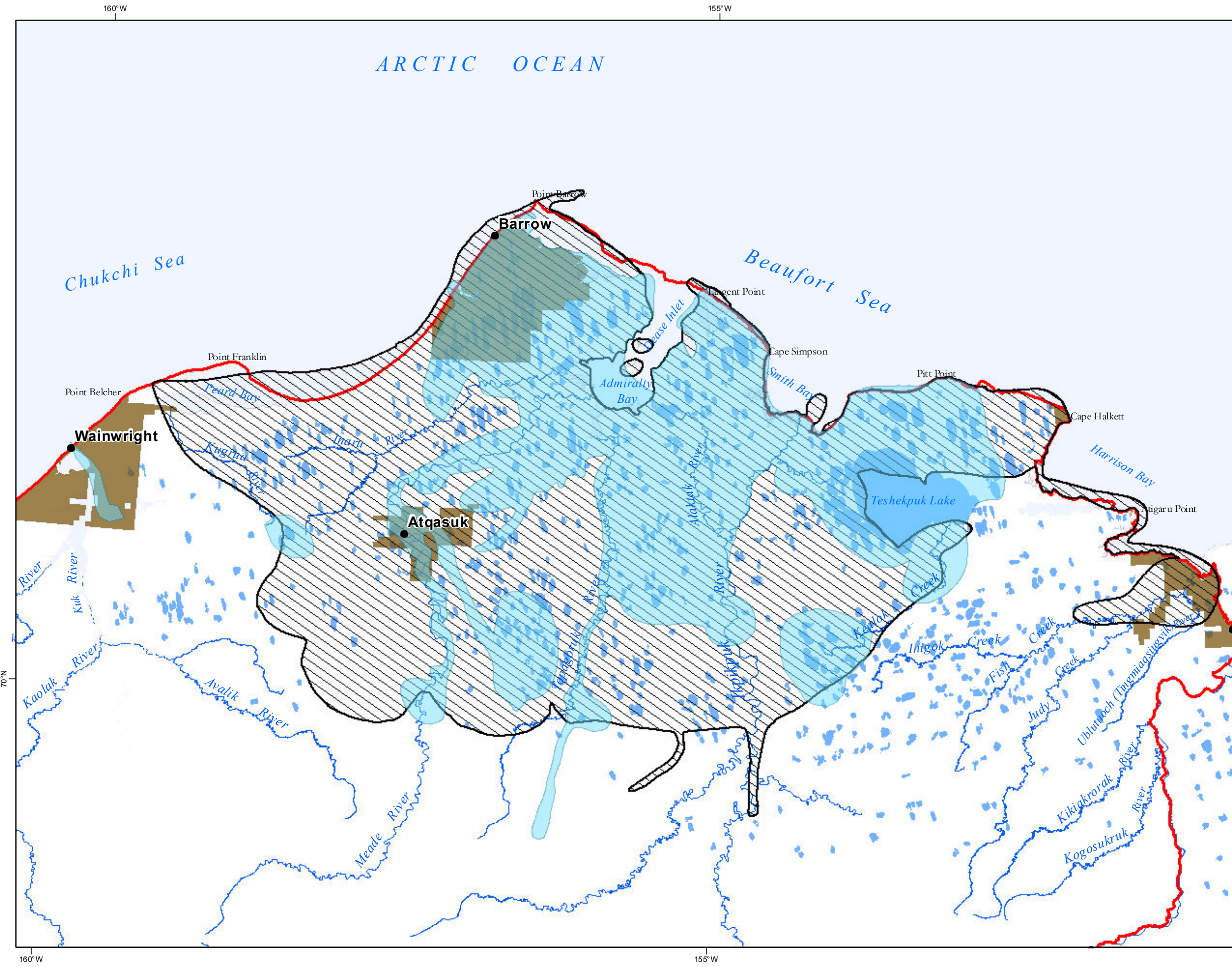
Sources: Pedersen, 1979
North Slope Borough, 2008

- Subsistence Cabin and Fixed Campsites
- Subsistence Resource**
- Whales
 - Moose
 - Caribou
- Resource use areas change through time and are not fixed entities. Land outside these areas should not be assumed to be less important to community residents.
- Native Patent or IC within NPR-A
- NPR-A Boundary



No warranty is made by the Bureau of Land Management as to the accuracy, reliability, or completeness of these data for individual use or aggregate use with other data, or for purposes not intended by BLM. Spatial information may not meet National Map Accuracy Standards. This information may be updated without notification. For official land status information refer to Cadastral Survey plats, Master Title Plats and land status case-files.

Projection: Albers Conic Equal Area
referencing NAD83



Map 3.4.3-5
Barrow Subsistence Use Areas for Fish and Birds

Source: Pedersen 1979.

Subsistence Resource

Birds

Fish

Resource use areas change through time are not fixed entities. Land outside these areas should not be assumed to be less important to community residents.

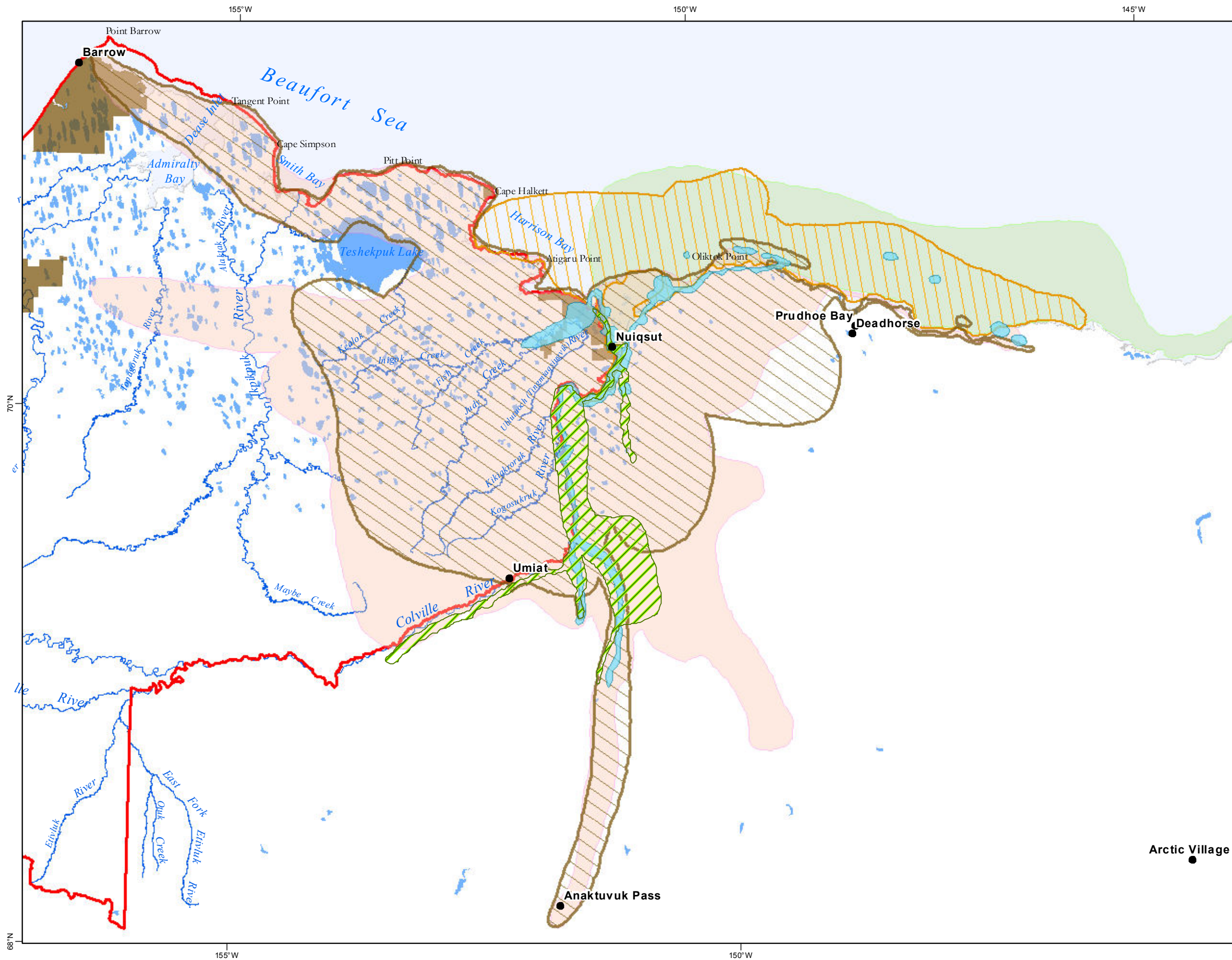
Native Patent or IC within NPR-A

NPR-A Boundary

No warranty is made by the Bureau of Land Management as to the accuracy, reliability, or completeness of these data for individual use or aggregate use with other data, or for purposes not intended by BLM. Spatial information may not meet National Map Accuracy Standards. This information may be updated without notification. For official land status information refer to Cadastral Survey plats, Master Title Plats and land status case-files.

Projection: Albers Conic Equal Area
referencing NAD83

Bureau of Land Management - Alaska
National Petroleum Reserve - Alaska
Final IAP/EIS



Map 3.4.3-6 Nuiqsut Subsistence Use Area

Sources: Pedersen 1979; Hoffman,
Libbey and Spearman 1988

Subsistence Resource

- Moose
- Caribou
- Seal
- Furbearer- Hunting
- Fish
- Whaling

Resource use areas change through time
are not fixed entities. Land outside these
areas should not be assumed to be less
important to community residents.

- Native Patent or IC within NPR-A
- NPR-A Boundary

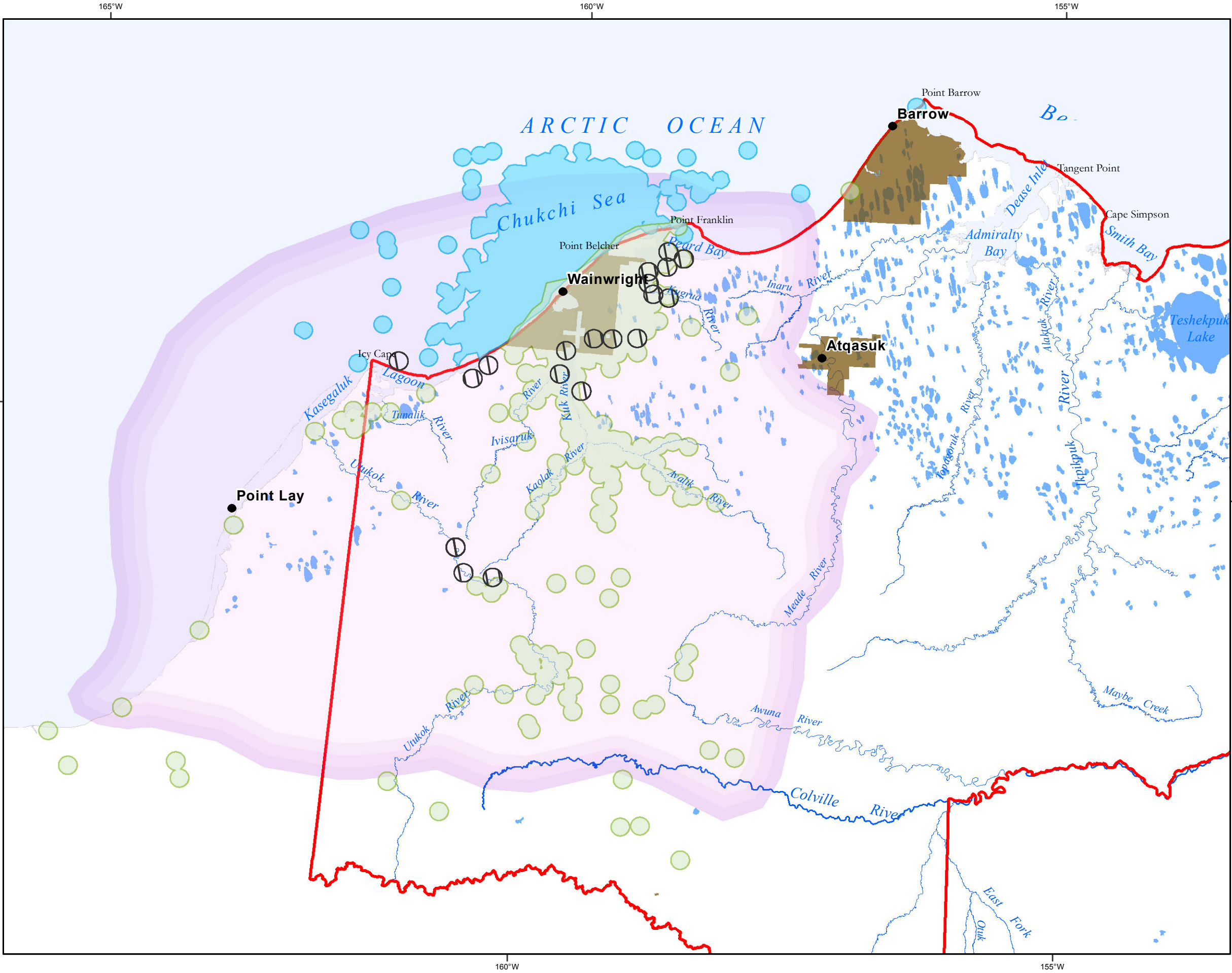
0 6 12 24 36 48
Miles

No warranty is made by the Bureau of Land Management
as to the accuracy, reliability, or completeness of these
data for individual use or aggregate use with other data,
or for purposes not intended by BLM. Spatial information
may not meet National Map Accuracy Standards. This
information may be updated without notification. For
official land status information refer to Cadastral Survey
plats, Master Title Plats and land status case-files.

Projection: Albers Conic Equal Area
referencing NAD83



Bureau of Land Management - Alaska
National Petroleum Reserve - Alaska
Final IAP/EIS



Map 3.4.3-7
Subsistence Use Areas - Wainwright

Sources: MMS/NSB, 1993.

Subsistence Resource

Fish

Terrestrial Mammals

Marine Mammals

Traditional Use Area

Resource use areas change through time are not fixed entities. Land outside these areas should not be assumed to be less important to community residents.

Native Patent or IC within NPR-A


NPR-A Boundary

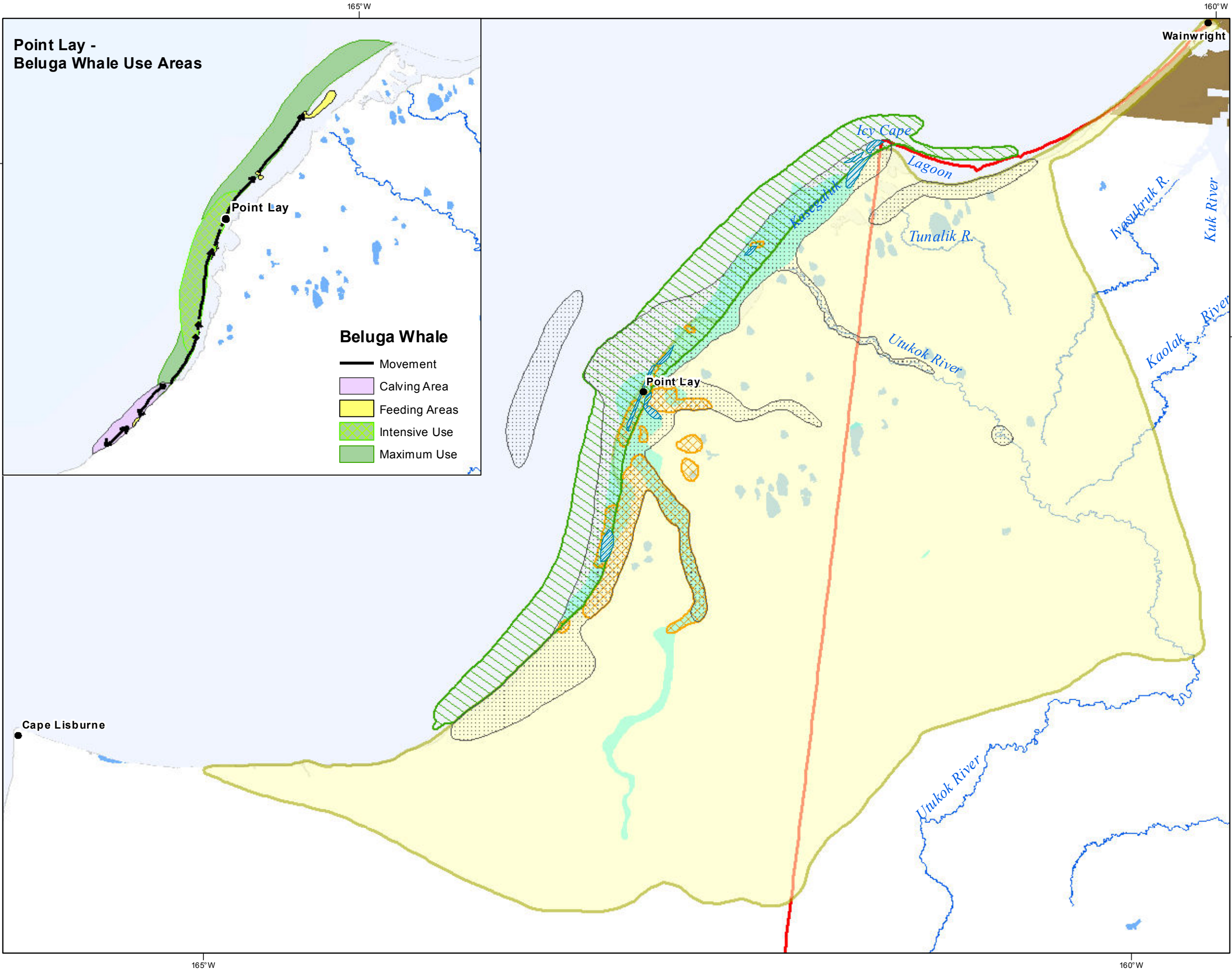
0122436

Miles

No warranty is made by the Bureau of Land Management as to the accuracy, reliability, or completeness of these data for individual use or aggregate use with other data, or for purposes not intended by BLM. Spatial information may not meet National Map Accuracy Standards. This information may be updated without notification. For official land status information refer to Cadastral Survey plats, Master Title Plats and land status case-files.

Projection: Albers Conic Equal Area
referencing NAD83


Bureau of Land Management - Alaska
National Petroleum Reserve - Alaska
Final IAP/EIS



Map 3.4.3-8
Point Lay
Subsistence Use Area

Sources: Pedersen 1979

Subsistence Resource

- Fish- Intensive Use
- Waterfowl
- Marine Mammals
- Gathering
- Fish
- Mammals

Resource use areas change through time
are not fixed entities. Land outside these
areas should not be assumed to be less
important to community residents.

- Native Patent or IC within NPR-A
- NPR-A Boundary

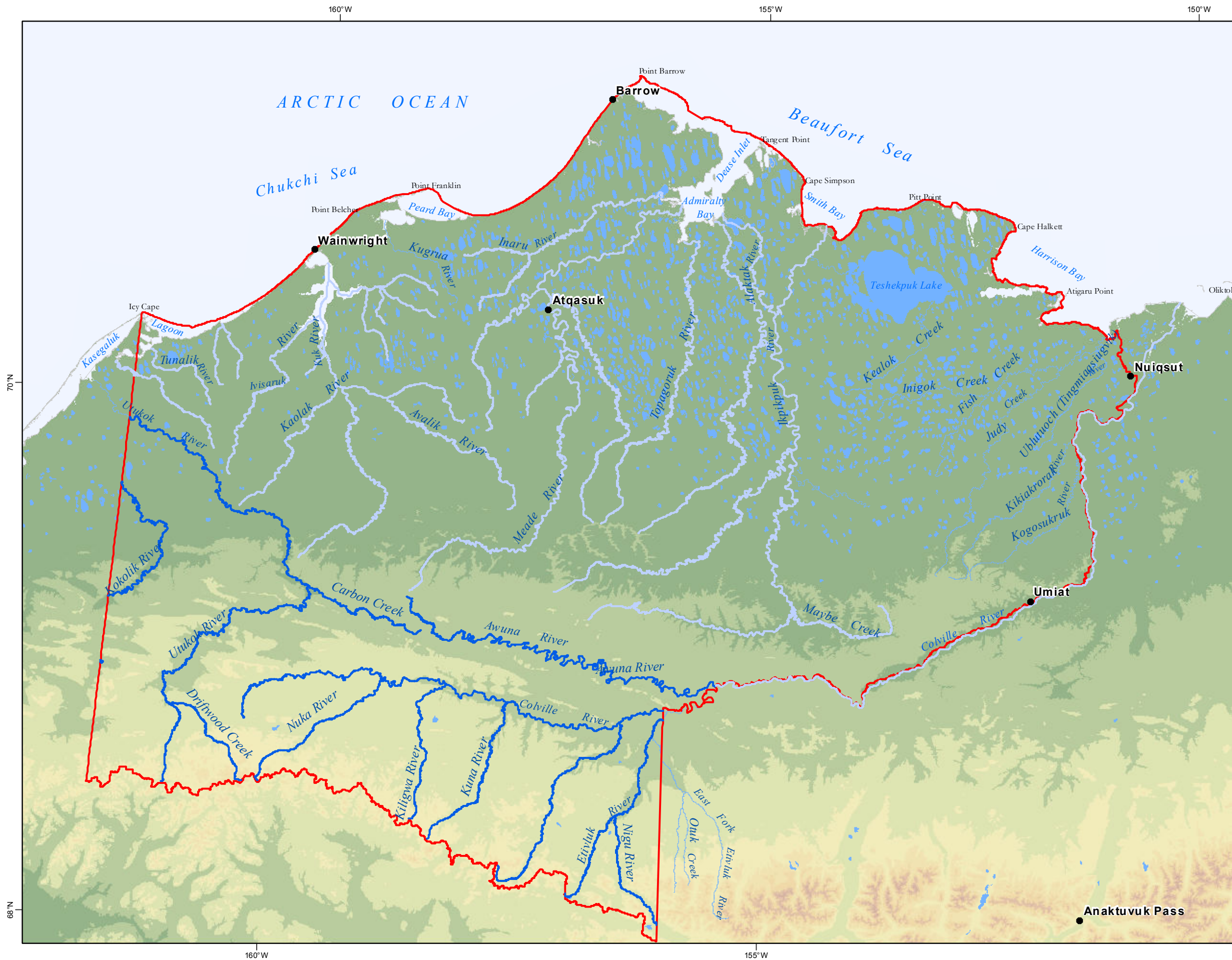
0 6 12 24 Miles

No warranty is made by the Bureau of Land Management
as to the accuracy, reliability, or completeness of these
data for individual use or aggregate use with other data,
or for purposes not intended by BLM. Spatial information
may not meet National Map Accuracy Standards. This
information may be updated without notification. For
official land status information refer to Cadastral Survey
plats, Master Title Plats and land status case-files.

Projection: Albers Conic Equal Area
referencing NAD83



Bureau of Land Management - Alaska
National Petroleum Reserve - Alaska
Final IAP/EIS



Map 3.4.7-1 Eligible Wild & Scenic Rivers

Sources: USGS NHD 2010
BLM 2008

Eligible Wild & Scenic Rivers
Considered for Suitability

Eligible Wild & Scenic Rivers
Determined Not Suitable in
Past Planning

NPR-A Boundary

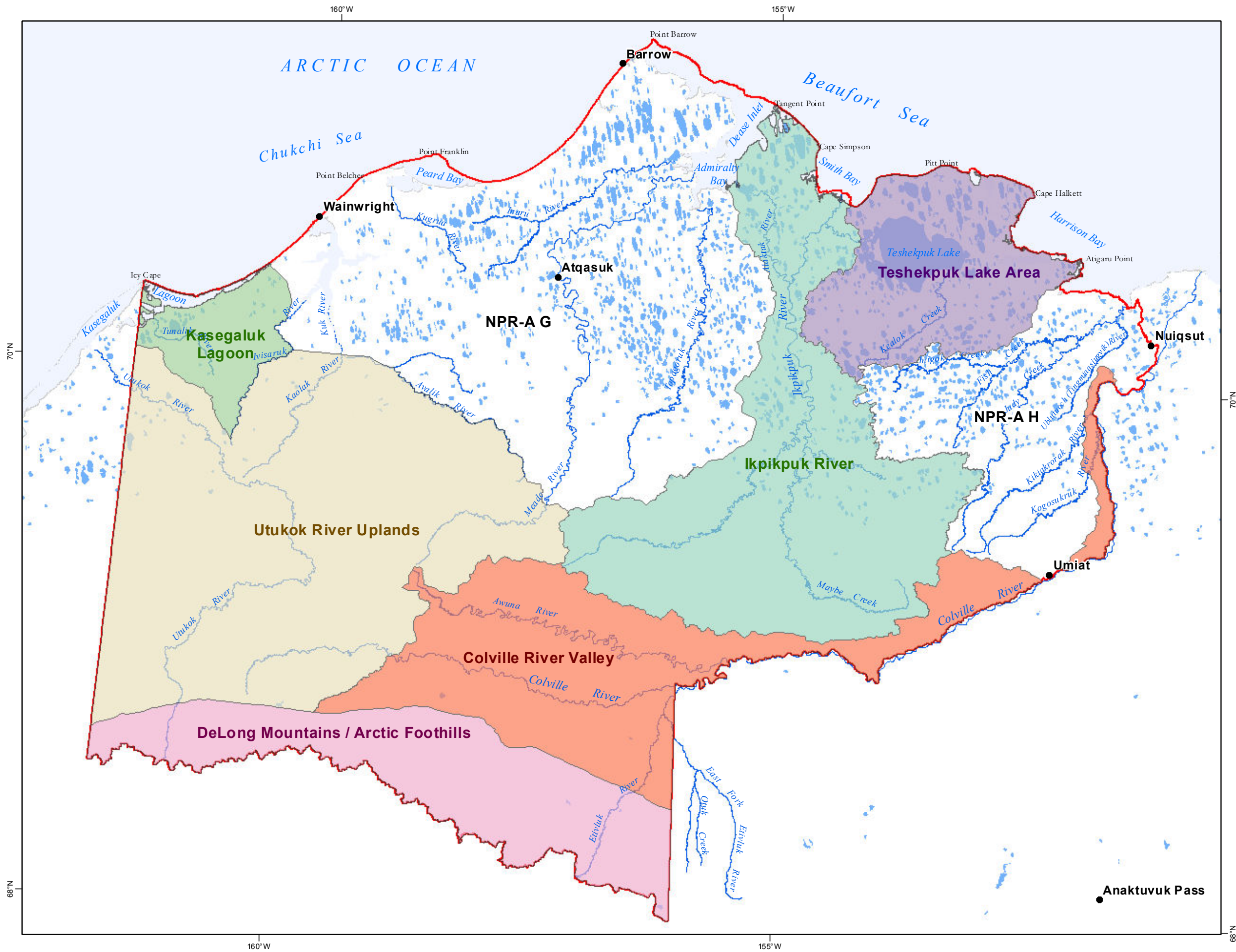
0 6 12 24 36 48
Miles

No warranty is made by the Bureau of Land Management as to the accuracy, reliability, or completeness of these data for individual use or aggregate use with other data, or for purposes not intended by BLM. Spatial information may not meet National Map Accuracy Standards. This information may be updated without notification. For official land status information refer to Cadastral Survey plats, Master Title Plats and land status case-files.

Projection: Albers Conic Equal Area
referencing NAD83





Bureau of Land Management - Alaska
National Petroleum Reserve - Alaska
Final IAP/EIS



Map 3.4.8-1 Wilderness Characteristics Inventory Areas

Source: BLM 1979

-  Wilderness Unit
-  NPR-A Boundary

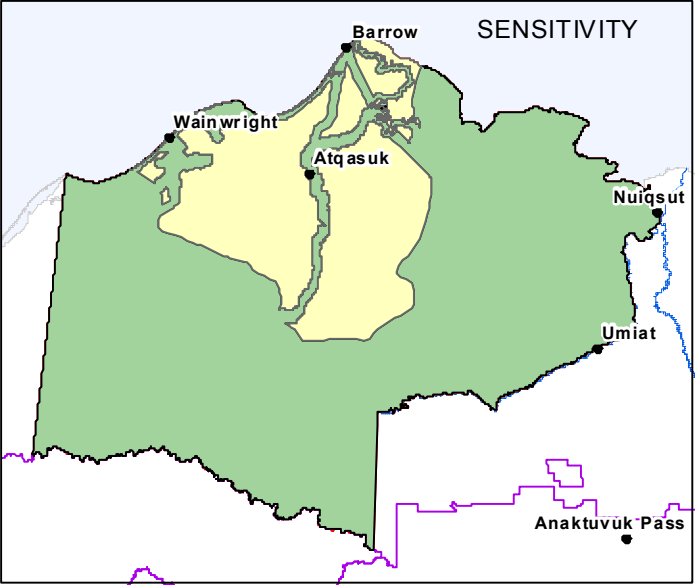
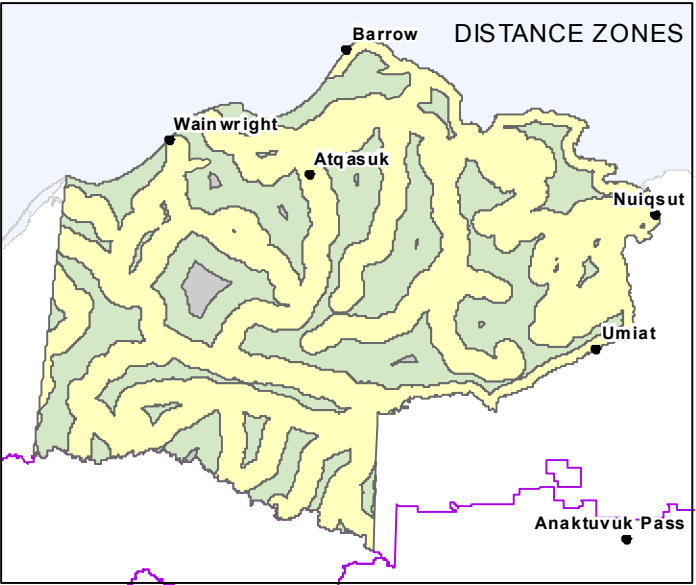
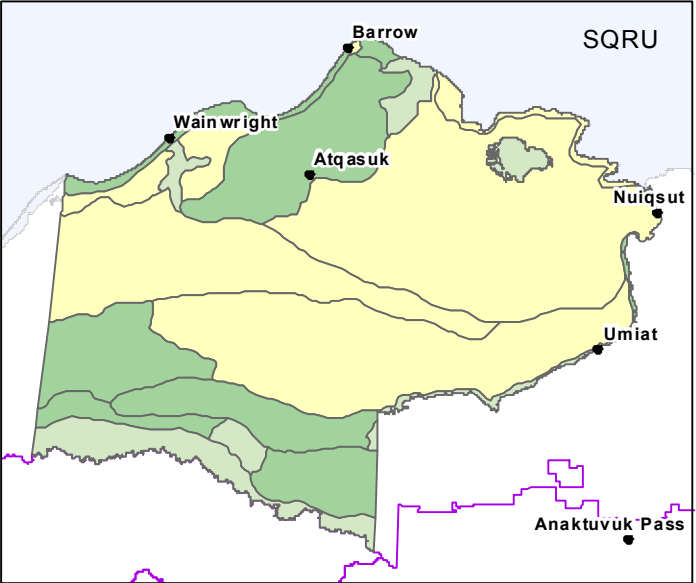
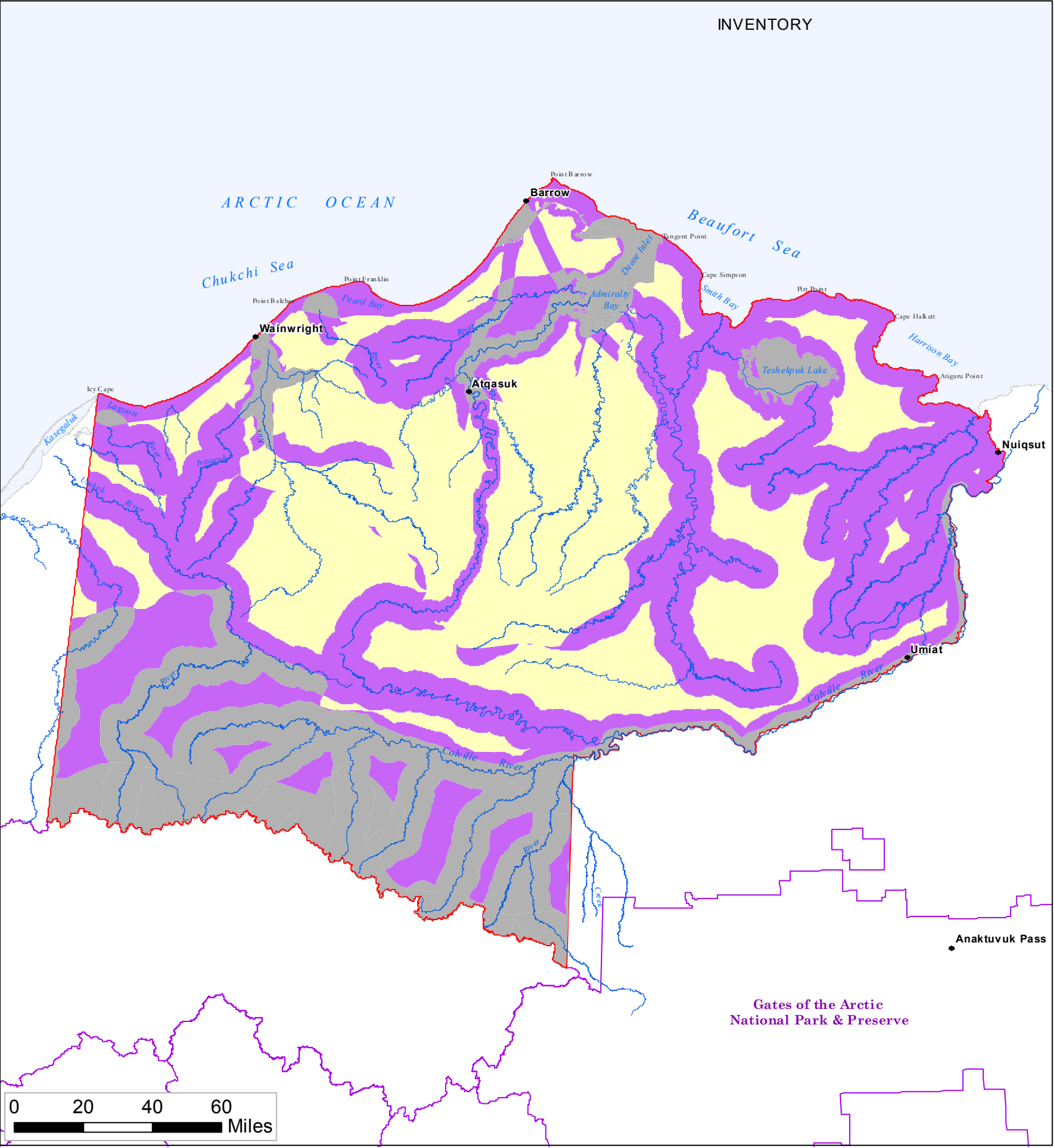
0 6 12 24 36 48 Miles

No warranty is made by the Bureau of Land Management as to the accuracy, reliability, or completeness of these data for individual use or aggregate use with other data, or for purposes not intended by BLM. Spatial information may not meet National Map Accuracy Standards. This information may be updated without notification. For official land status information refer to Cadastral Survey plats, Master Title Plats and land status case-files.

Projection: Albers Conic Equal Area
referencing NAD83



Bureau of Land Management - Alaska
National Petroleum Reserve - Alaska
Final IAP/EIS



Map 3.4.9-1

Visual Resource Management (VRM)

Source: BLM 2011

VRM Inventory Classes

- Class II
- Class III
- Class IV

Distance Zone

- Background
- Foreground
- Seldom Seen

Sensitivity

- High
- Medium

SQRU

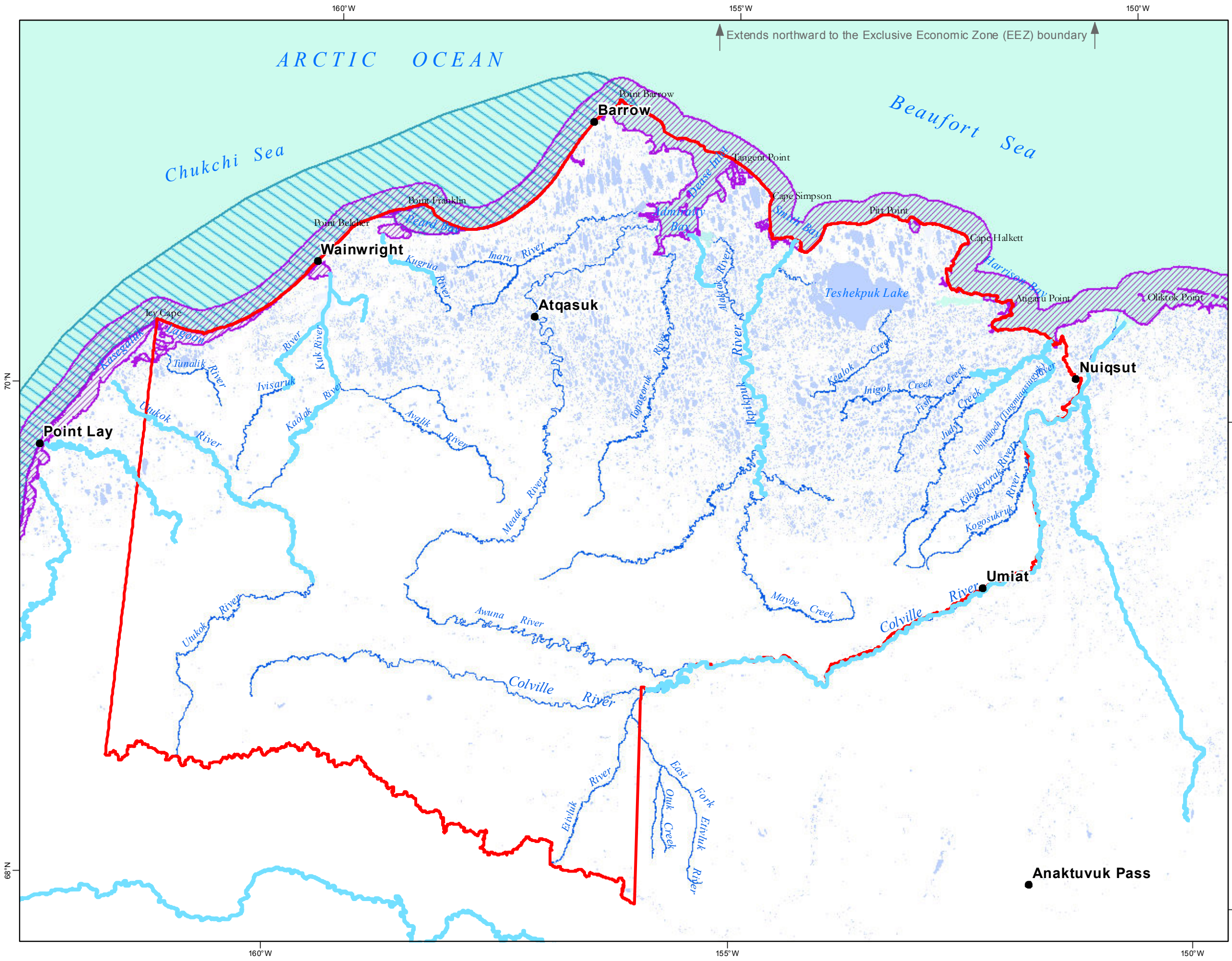
- a
- b
- c

NPR-A Boundary

No warranty is made by the Bureau of Land Management as to the accuracy, reliability, or completeness of these data for individual use or aggregate use with other data, or for purposes not intended by BLM. Spatial information may not meet National Map Accuracy Standards. This information may be updated without notification. For official land status information refer to Cadastral Survey plats, Master Title Plats and land status case-files.

Projection: Albers Conic Equal Area
referencing NAD83

Bureau of Land Management - Alaska
National Petroleum Reserve - Alaska
Final IAP/EIS



Map D-1
Essential Fish Habitat

Sources: NPFMC 2006, 2009;
ADF&G 2011a

Pacific salmon
freshwater

Pacific salmon estuarine

Pacific salmon marine
& Arctic cod
This area extends north to the Exclusive
Economic Zone (EEZ) boundary, 200
nautical miles from State waters.

Saffron cod

Rivers

Lakes

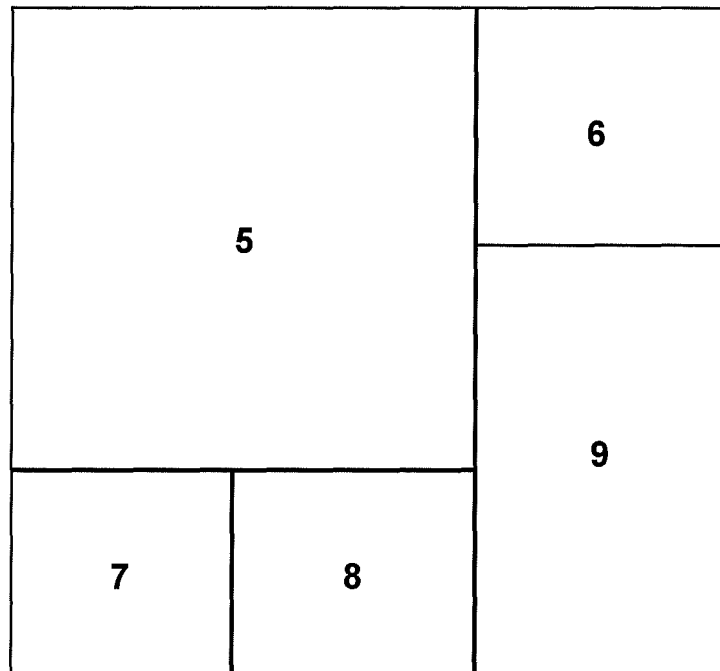
NPR-A Boundary

0 6 12 24 36 48
Miles

No warranty is made by the Bureau of Land Management
as to the accuracy, reliability, or completeness of these
data for individual use or aggregate use with other data,
or for purposes not intended by BLM. Spatial information
may not meet National Map Accuracy Standards. This
information may be updated without notification. For
official land status information refer to Cadastral Survey
plats, Master Title Plats and land status case-files.

Projection: Albers Conic Equal Area
referencing NAD83

Bureau of Land Management - Alaska
National Petroleum Reserve - Alaska
Final IAP/EIS



Back Cover Photos:

5. Coastal erosion due to warming permafrost shoreline, National Petroleum Reserve-Alaska.
Photo by University of Texas.

6. Arctic Fox, National Petroleum Reserve-Alaska.

7. Transporting exploration drill rig equipment, National Petroleum Reserve-Alaska.
Photo by NSSI.

8. Bear flowers on a thermokarst slump along the Colville River, National Petroleum Reserve-Alaska.
© Richard Kahn

9. Subsistence ice fishing, Nuiqsut, Alaska. Photo by NSSI.

