

Fig. 3.8a - Lowland/Upland Herbaceous Tundra landcover for Goodnews Planning Block.

Y:\maps\Bay Chapter 3 Maps\Vegetation\herbaceous\_tundra\herbtundra\_good.pdf  
Z:\projects\bay\_plan\mxd\template\_maps\landcov\landcov\_herbtundra.mxd



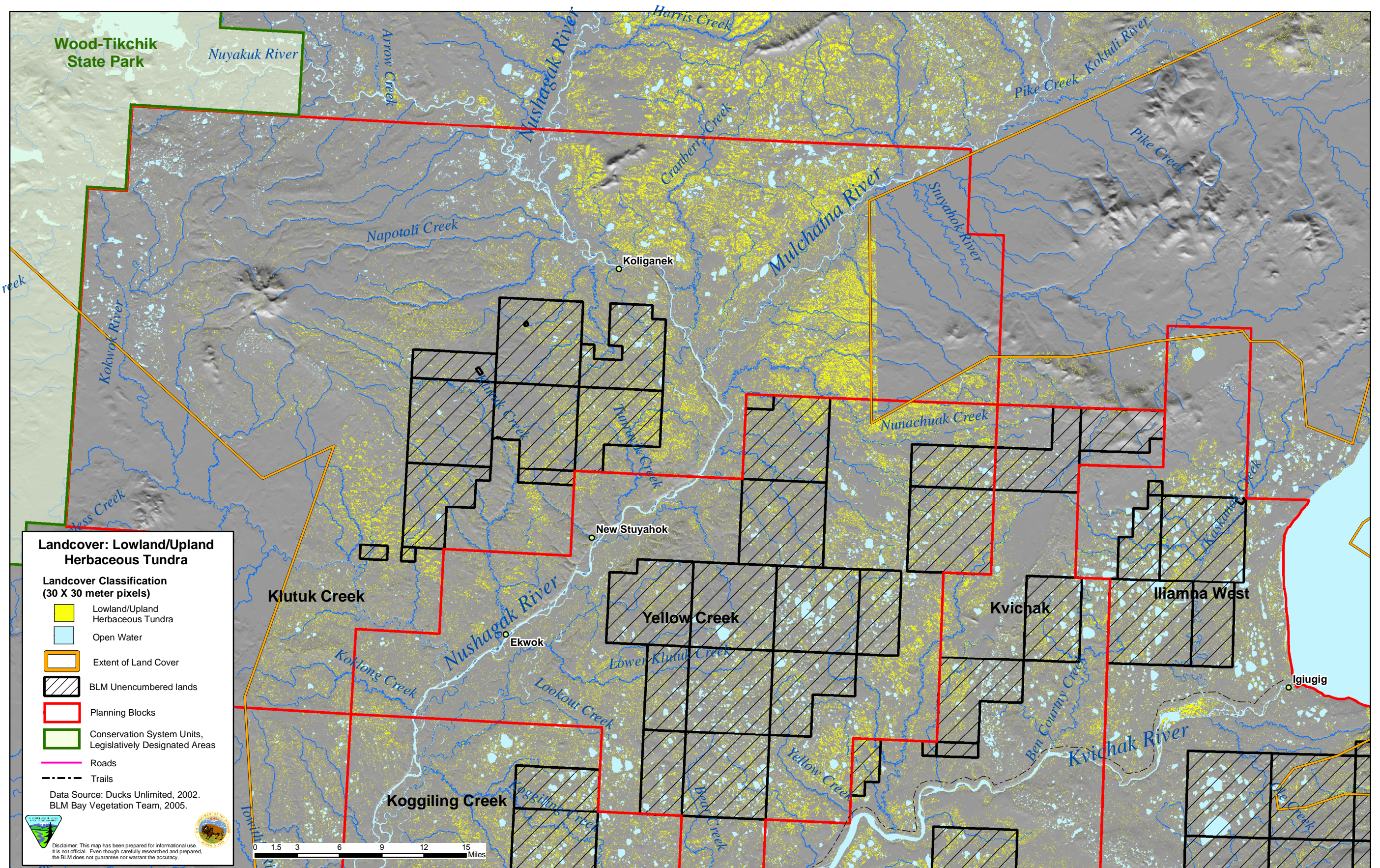


Fig. 3.8b - Lowland/Upland Herbaceous Tundra landcover for Klutuk Creek, Yellow Creek, Kvichak, and Iliamna West Planning Blocks

Y:\maps\Bay Chapter 3 Maps\Vegetation\herbaceous\_tundra\herbtundra\_bristnorth.pdf  
Z:\projects\bay\_plan\mxd\template\_maps\landcov\landcov\_herbtundra.mxd



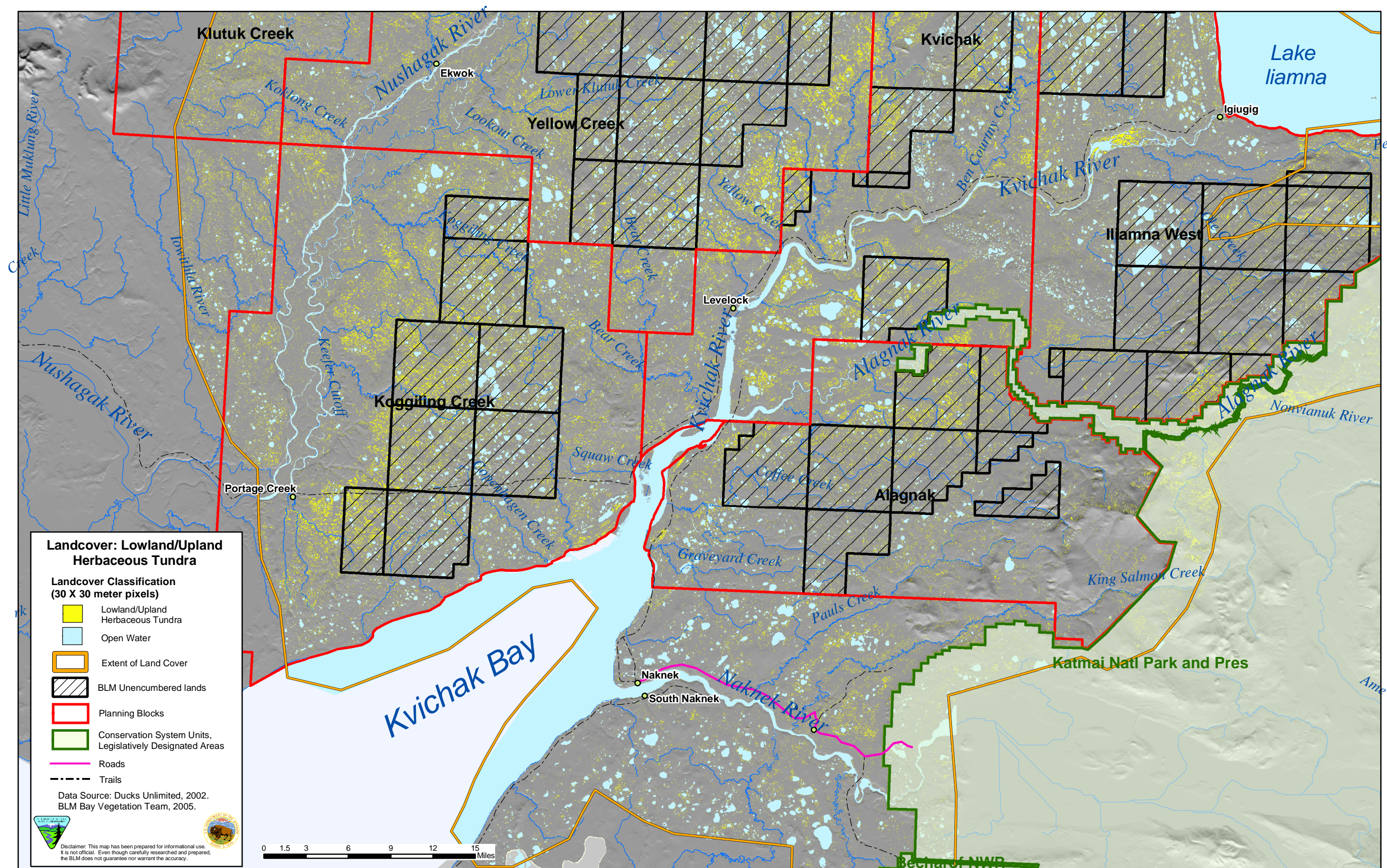


Fig. 3.8c - Lowland/Upland Herbaceous Tundra landcover for Kogginging Creek, Yellow Creek, Kvichak, Alagnak and Iliamna West Planning Blocks

Y:\maps\Bay Chapter 3 Maps\Vegetation\herbaceous\_tundra\herbtundra\_bristsouth.pdf  
Z:\projects\bay\_plan\mxd\template\_maps\landcov\landcov\_herbtundra.mxd



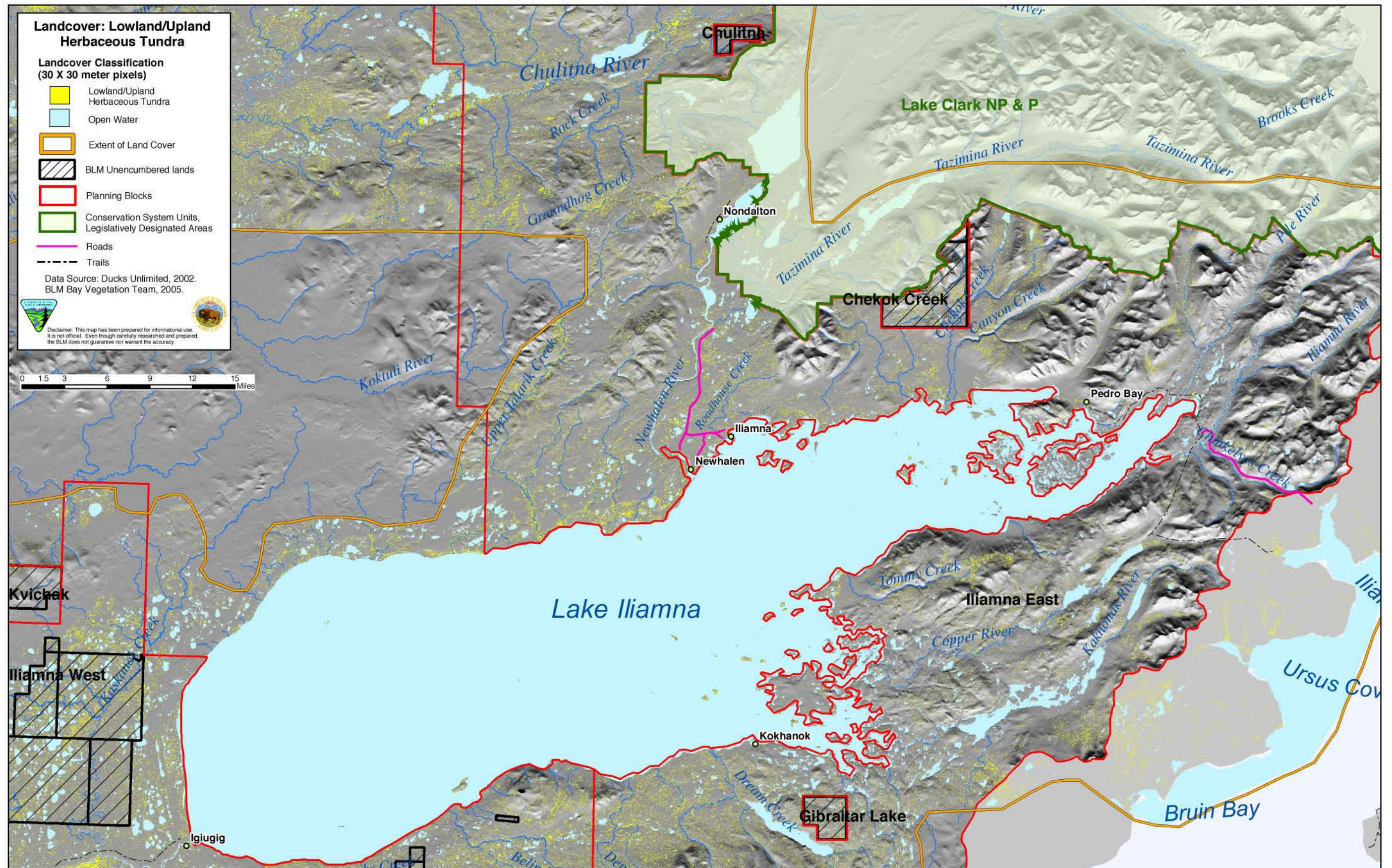


Fig. 3.8d - Lowland/Upland Herbaceous Tundra landcover for Iliamna East and Iliamna West Planning Blocks.

Y:\maps\Bay Chapter 3 Maps\Vegetation\herbaceous\_tundra\herbtundra\_iliamna.pdf  
Z:\projects\bay\_plan\mxd\template\_maps\landcov\landcov\_herbtundra.mxd



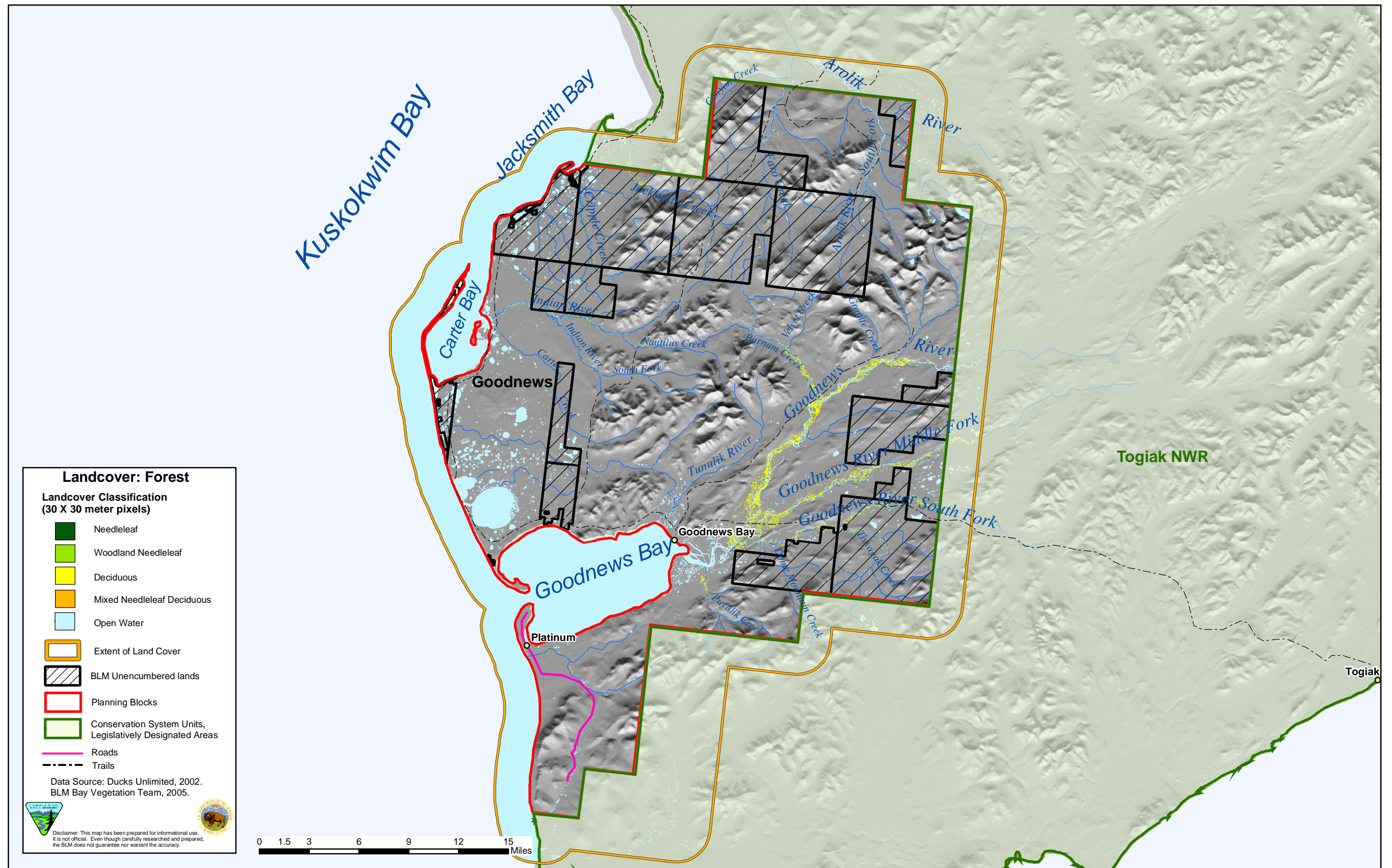


Fig. 3.9a - Forest landcover for Goodnews Planning Block.

Y:\maps\Bay Chapter 3 Maps\Vegetation\forest\landcov\_forest\_good.pdf  
Z:\projects\bay\_plan\mxd\template\_maps\landcov\landcov\_forest\_good.mxd







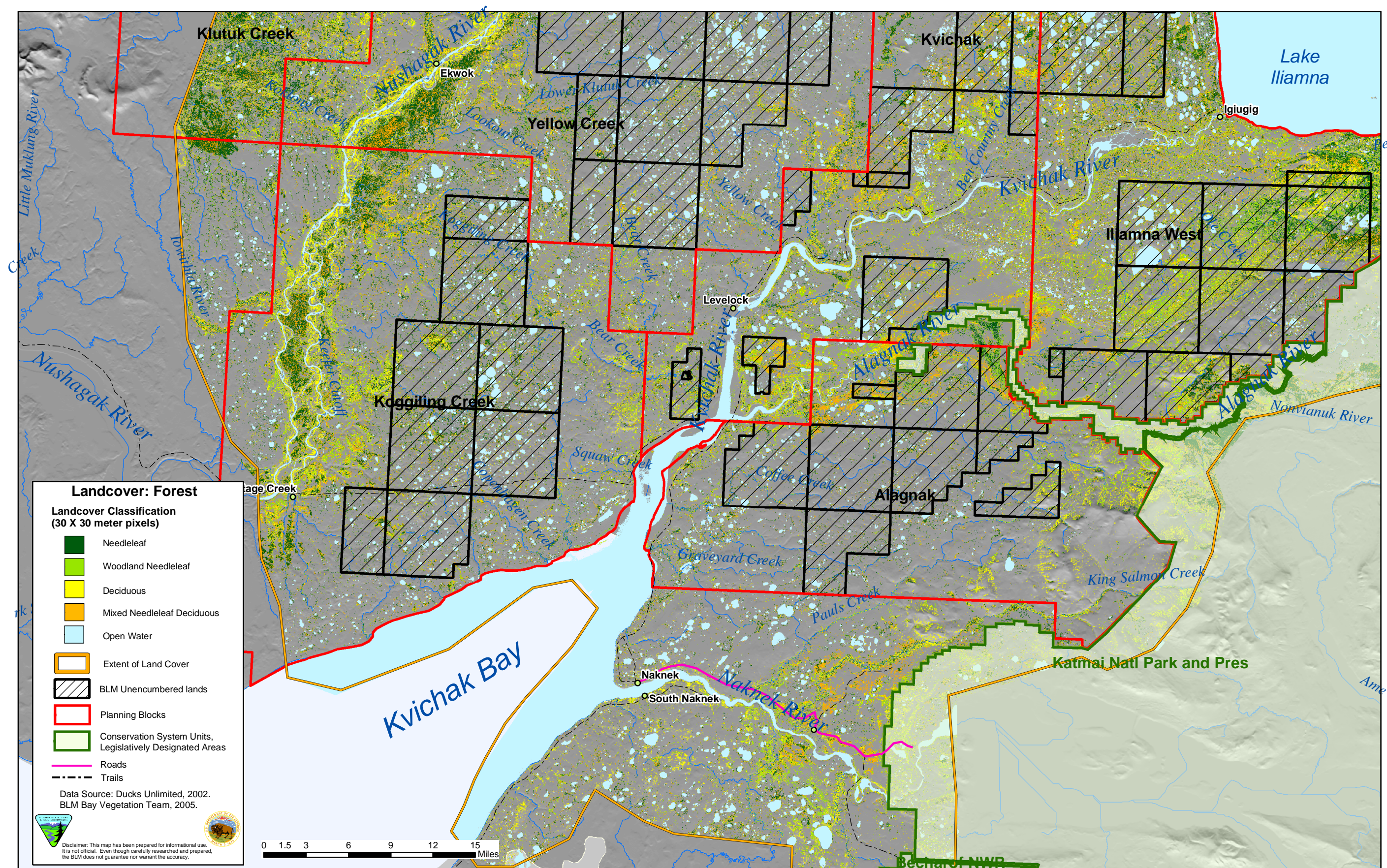


Fig. 3.9c - Forest landcover for Koggiling Creek, Yellow Creek, Kvichak, Alagnak and Iliamna West Planning Blocks.

Y:\maps\Bay Chapter 3 Maps\Vegetation\lichen\landcov\_forest\_bristsouth.pdf  
Z:\projects\bay\_plan\mxd\template\_maps\landcov\landcov\_forest\_brist\_ili.mxd



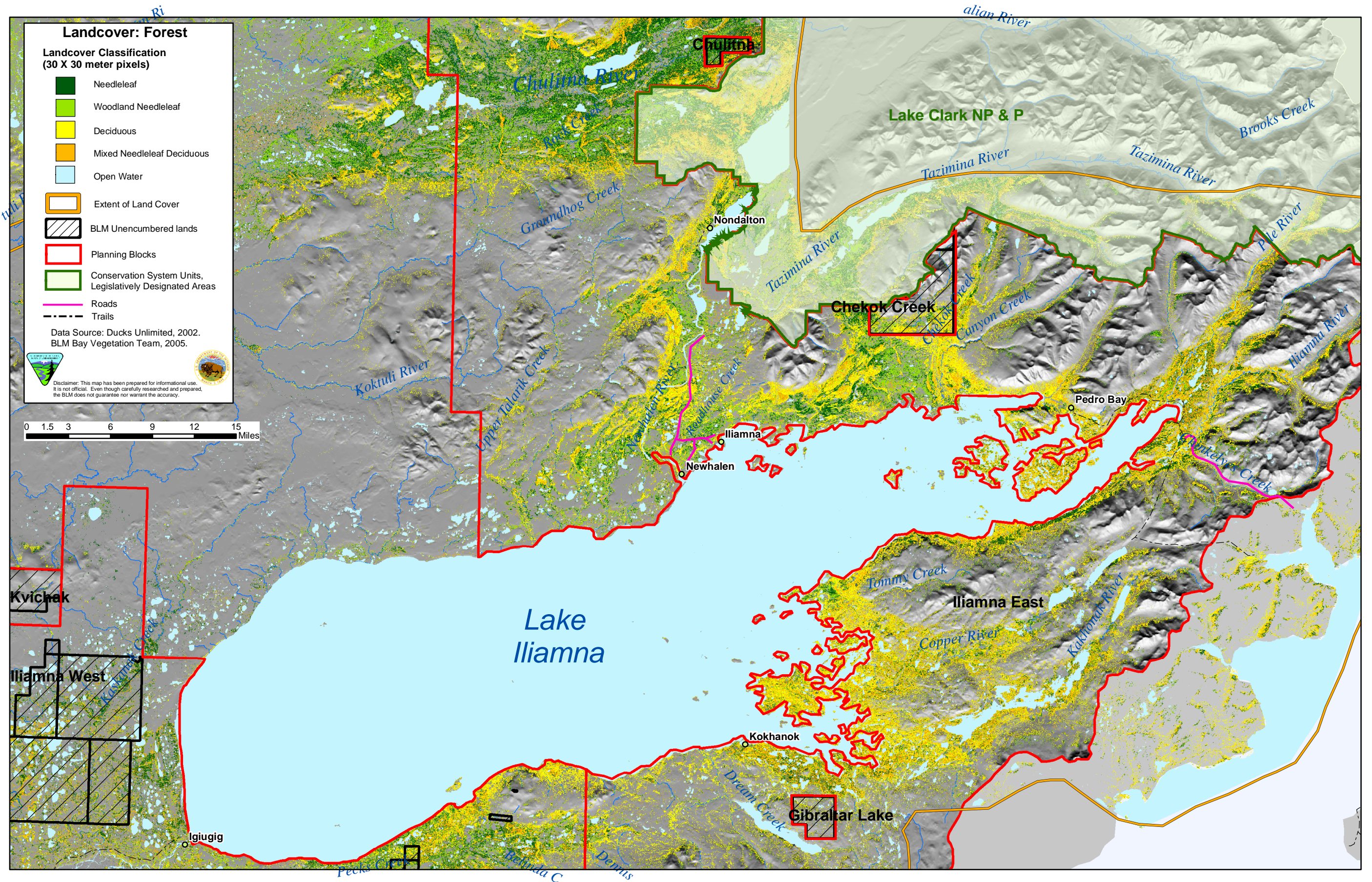


Fig. 3.9d - Forest landcover for Iliamna East and Iliamna West Planning Blocks.

Y:\maps\Bay Chapter 3 Maps\Vegetation\lichen\landcov\_forest\_iliamna.pdf  
Z:\projects\bay\_plan\mxd\template\_maps\landcov\landcov\_forest\_brist\_ili.mxd



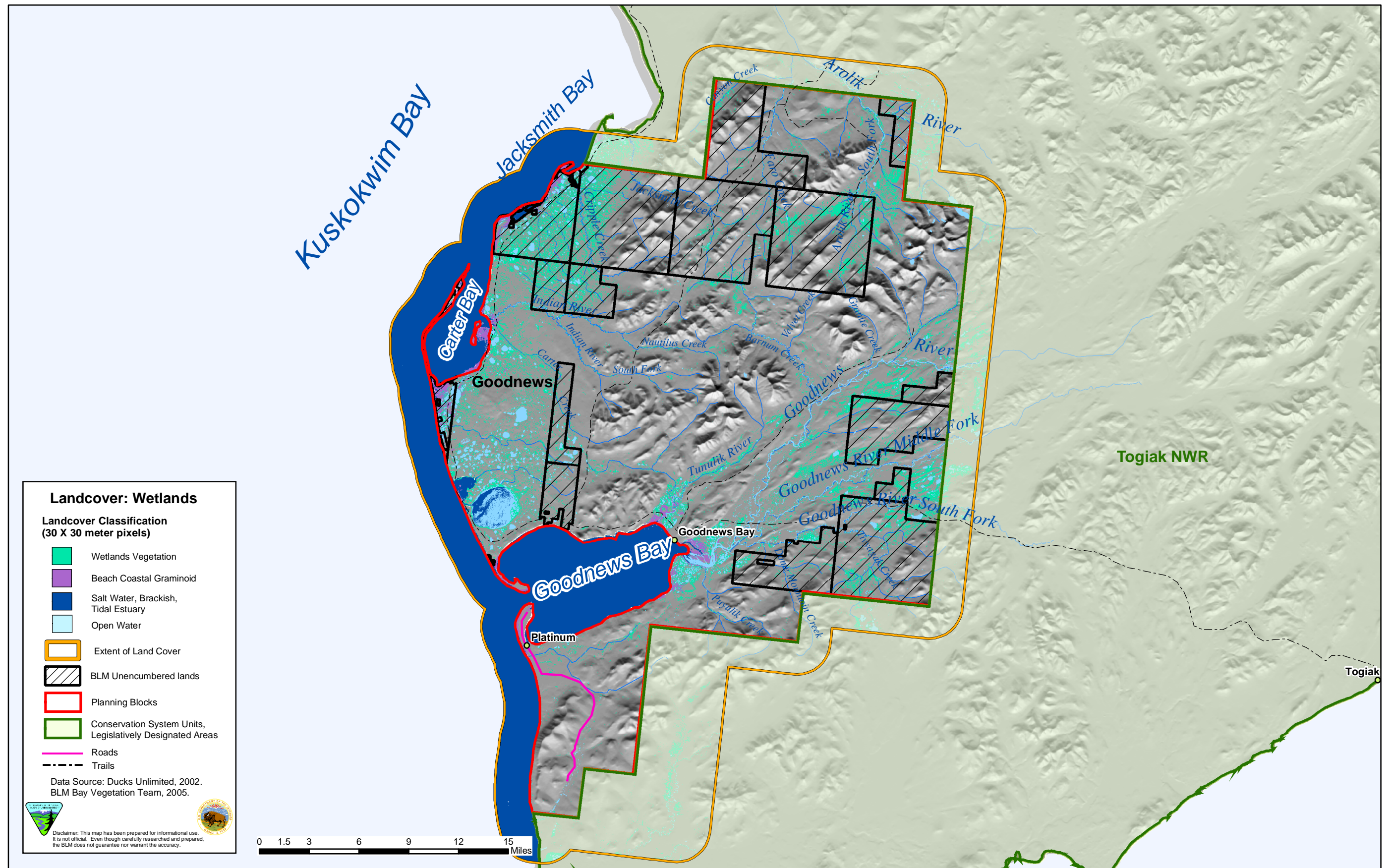


Fig. 3.10a - Wetlands landcover for Goodnews Planning Block.

Y:\maps\Bay Chapter 3 Maps\Vegetation\forest\landcov\_wetland\_good.pdf  
Z:\projects\bay\_plan\mxd\template\_maps\landcov\landcov\_wetlands\_good.mxd







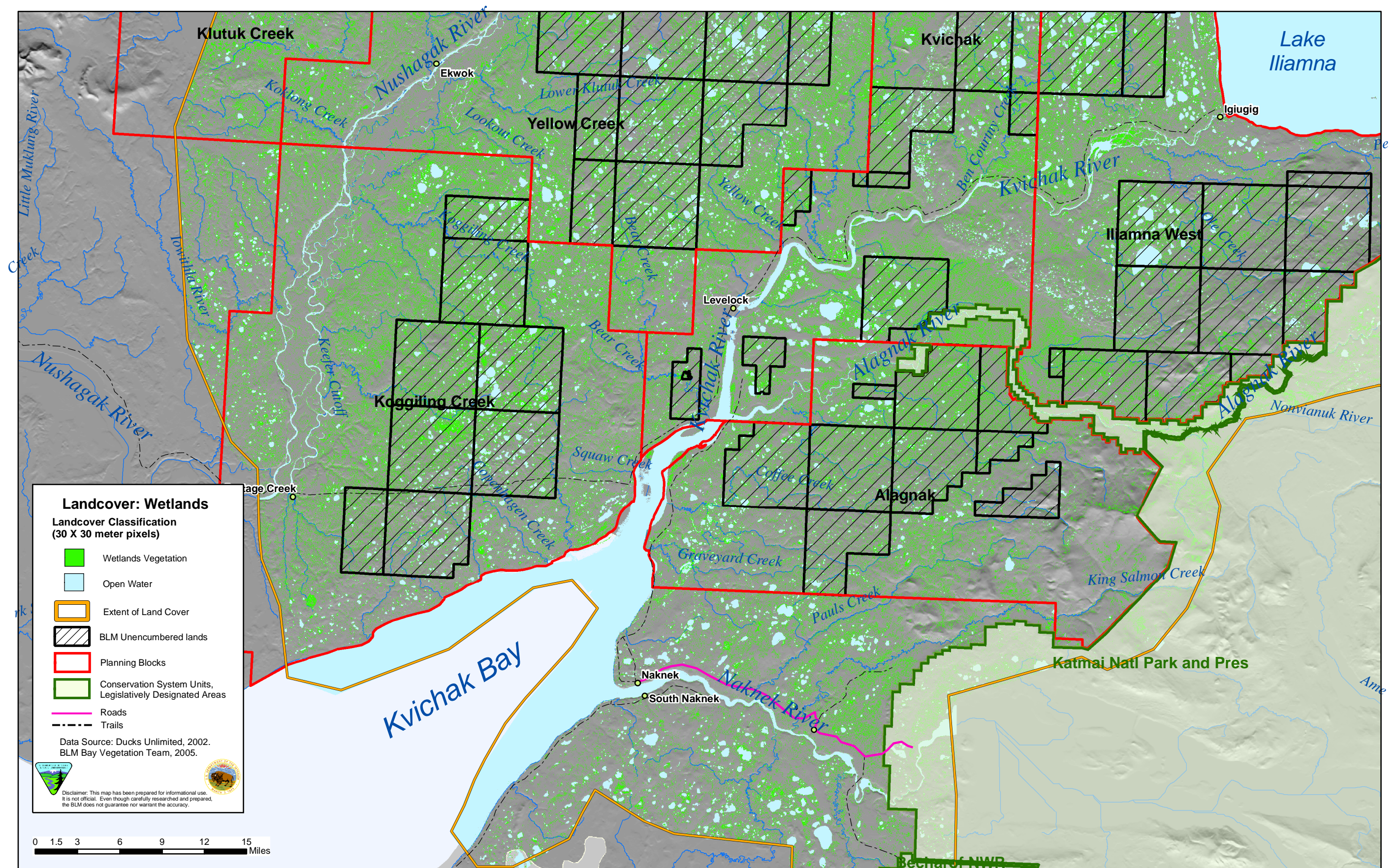


Fig. 3.10c - Wetland landcover for Koggiling Creek, Yellow Creek, Kvichak, Alagnak and Iliamna West Planning Blocks.

Y:\maps\Bay Chapter 3 Maps\Vegetation\wetlands\landcov\_wetland\_bristsouth.pdf  
 Z:\projects\bay\_plan\mxd\template\_maps\landcov\landcov\_wetlands\_brist\_ili.mxd



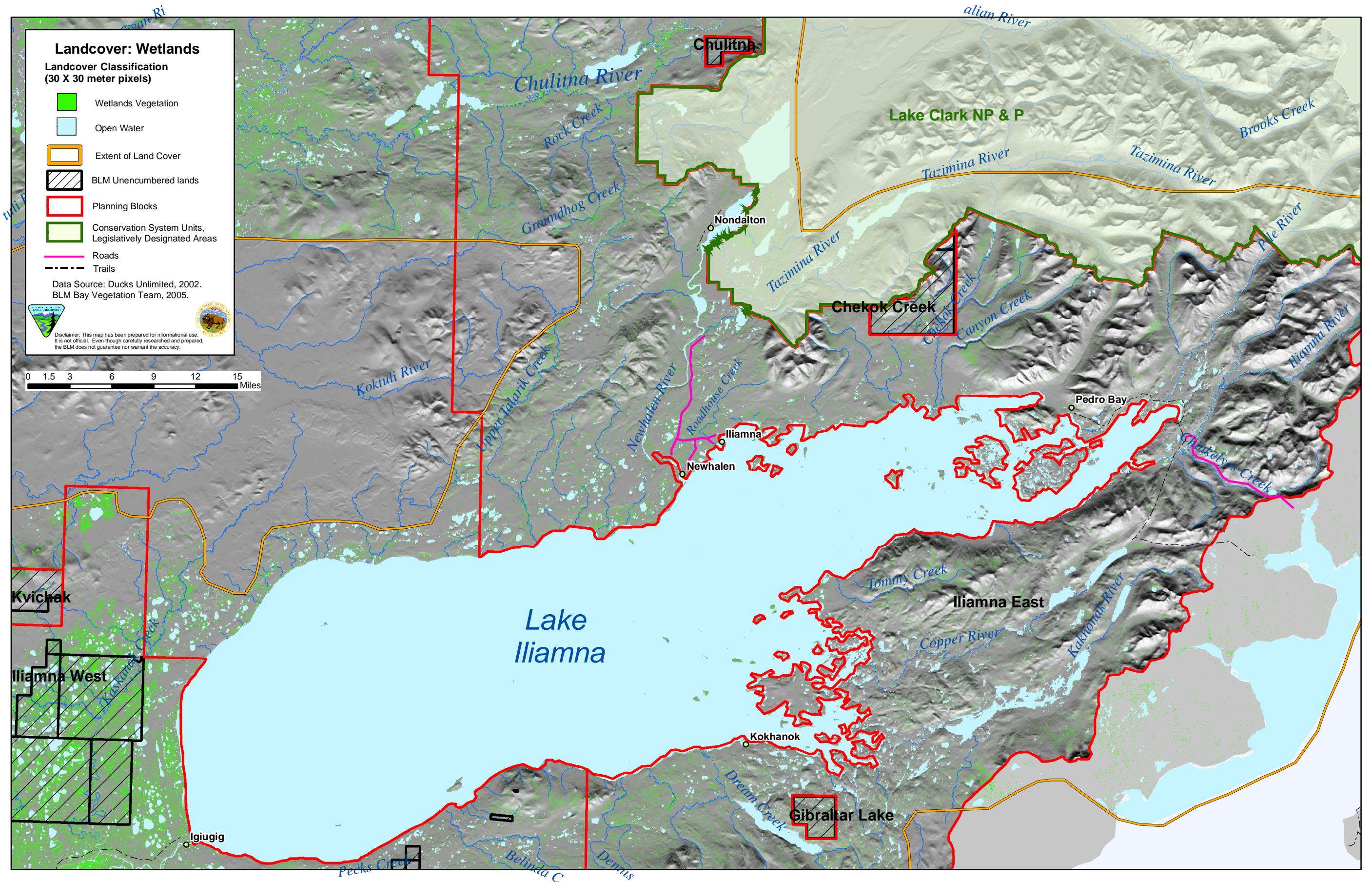


Fig. 3.10d - Wetland landcover for Iliamna East and Iliamna West Planning Blocks.



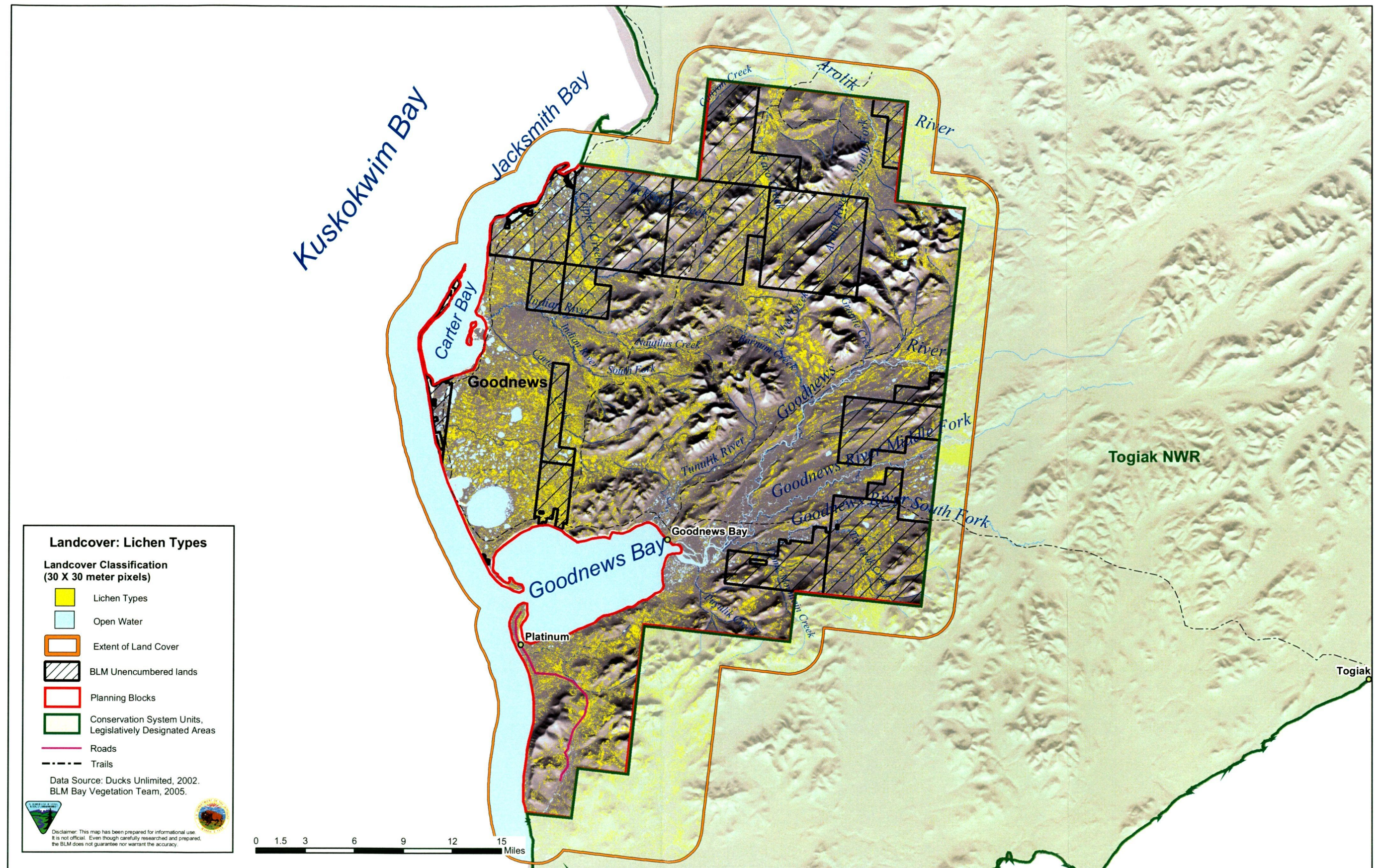


Fig. 3.11a - Lichen Types landcover for Goodnews Planning Block.

Y:\maps\Bay Chapter 3 Maps\Vegetation\lichen\lichen\_goodnews.pdf  
Z:\projects\bay\_plan\mxd\template\_maps\landcov\landcov\_lichen\_good.mxd



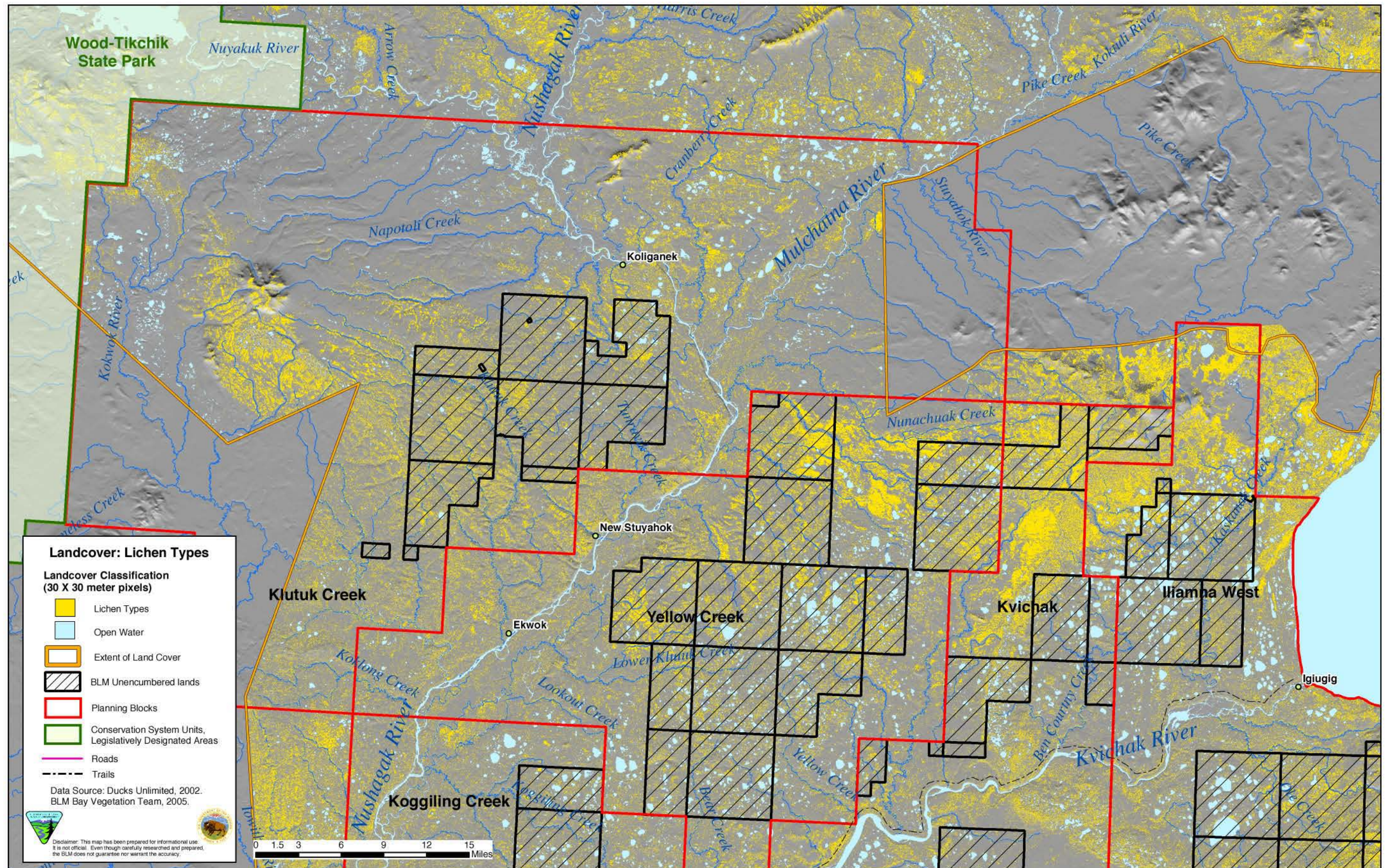


Fig. 3.11b - Lichen Types landcover for Klutuk Creek, Yellow Creek, Kvichak, and Iliamna West Planning Blocks.

Y:\maps\Bay Chapter 3 Maps\Vegetation\Lichen\Lichen\_bristnorth.pdf  
Z:\projects\bay\_plan\mxd\template\_maps\landcov\landcov\_lichen\_brist\_ili.mxd



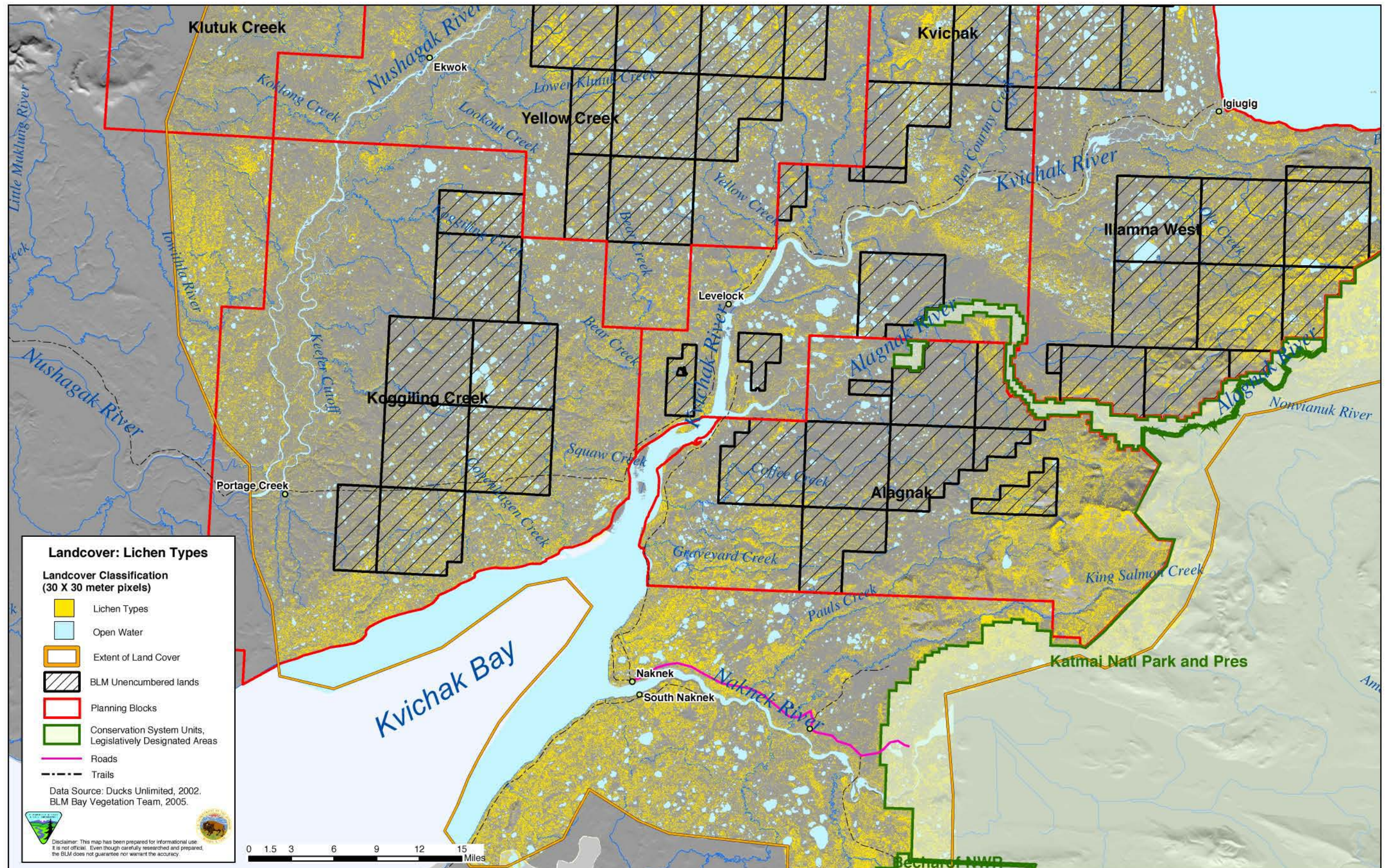


Fig. 3.11c - Lichen Types landcover for Koggiling Creek, Yellow Creek, Kvichak, Alagnak and Iliamna West Planning Blocks.

Y:\maps\Bay Chapter 3 Maps\Vegetation\Lichen\Lichen\_bristsouth.pdf  
Z:\projects\bay\_plan\mxd\template\_maps\landcov\landcov\_lichen\_brist\_ili.mxd



