

Figure 2.1 - VRM Inventory Classes, Alternative B, Bristol Bay/Iliamna Region

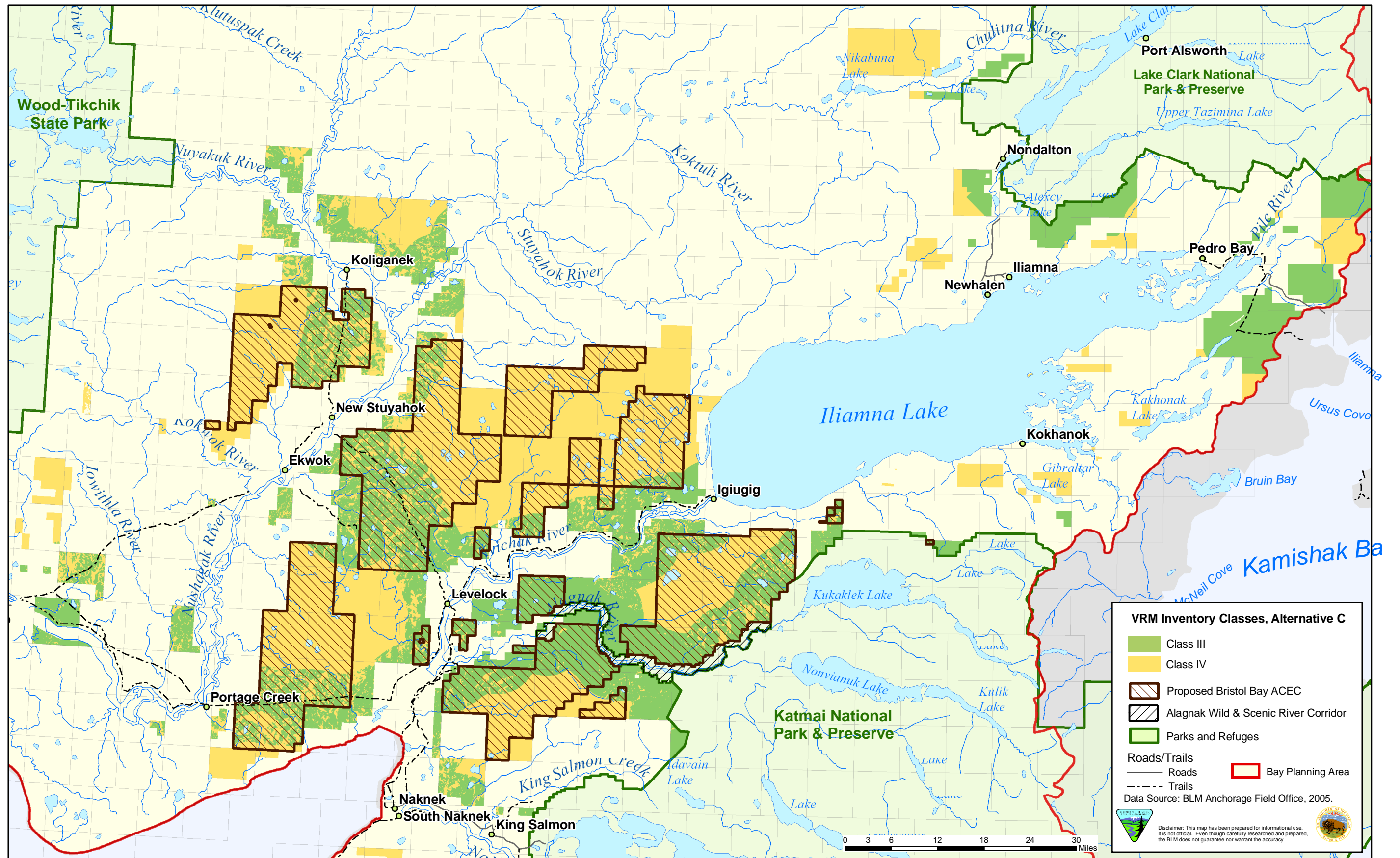


Figure 2.2 - VRM Inventory Classes, Alternative C, Bristol Bay/Iliamna Region

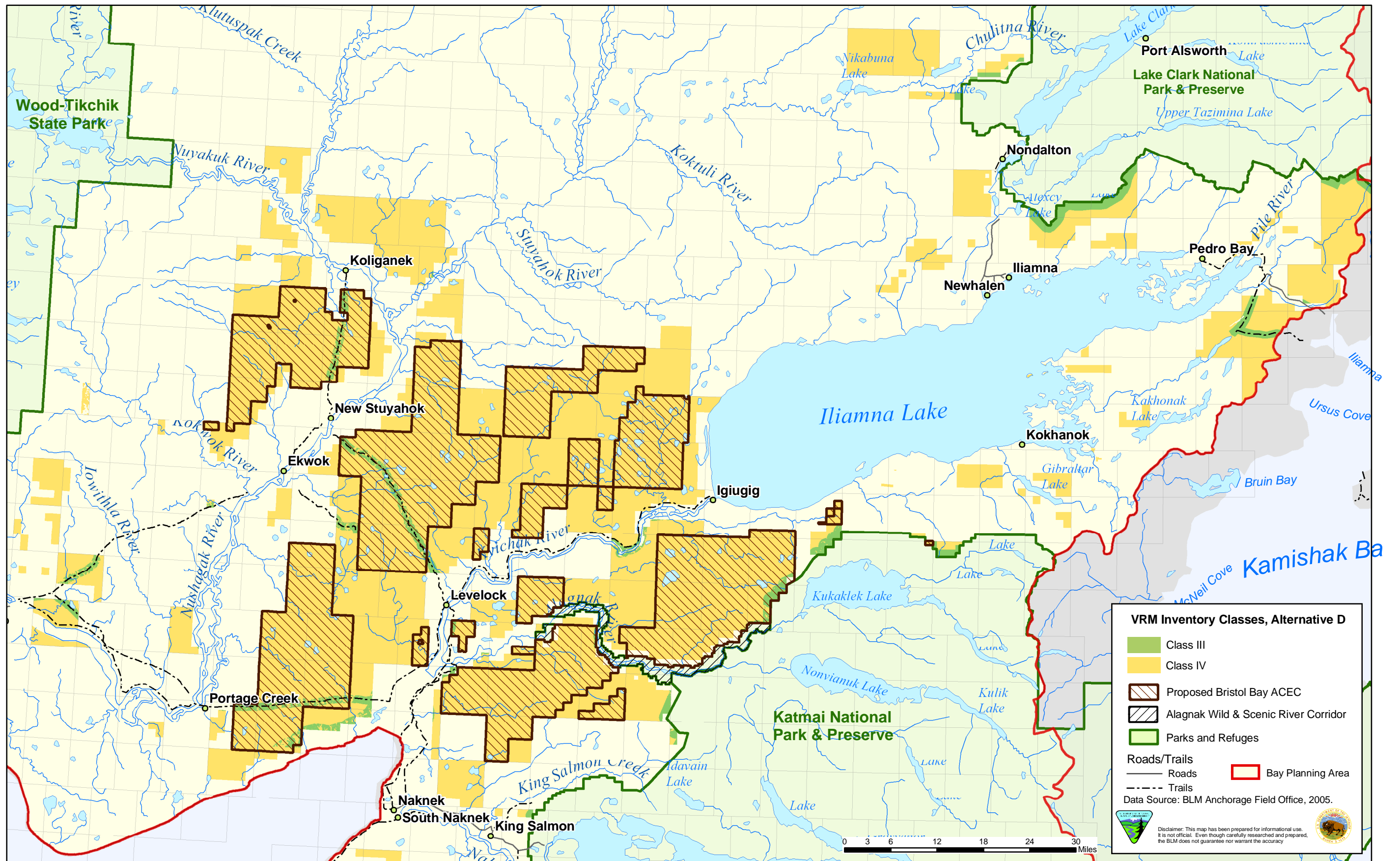


Figure 2.3 - VRM Inventory Classes, Alternative D, Bristol Bay/Iliamna Region

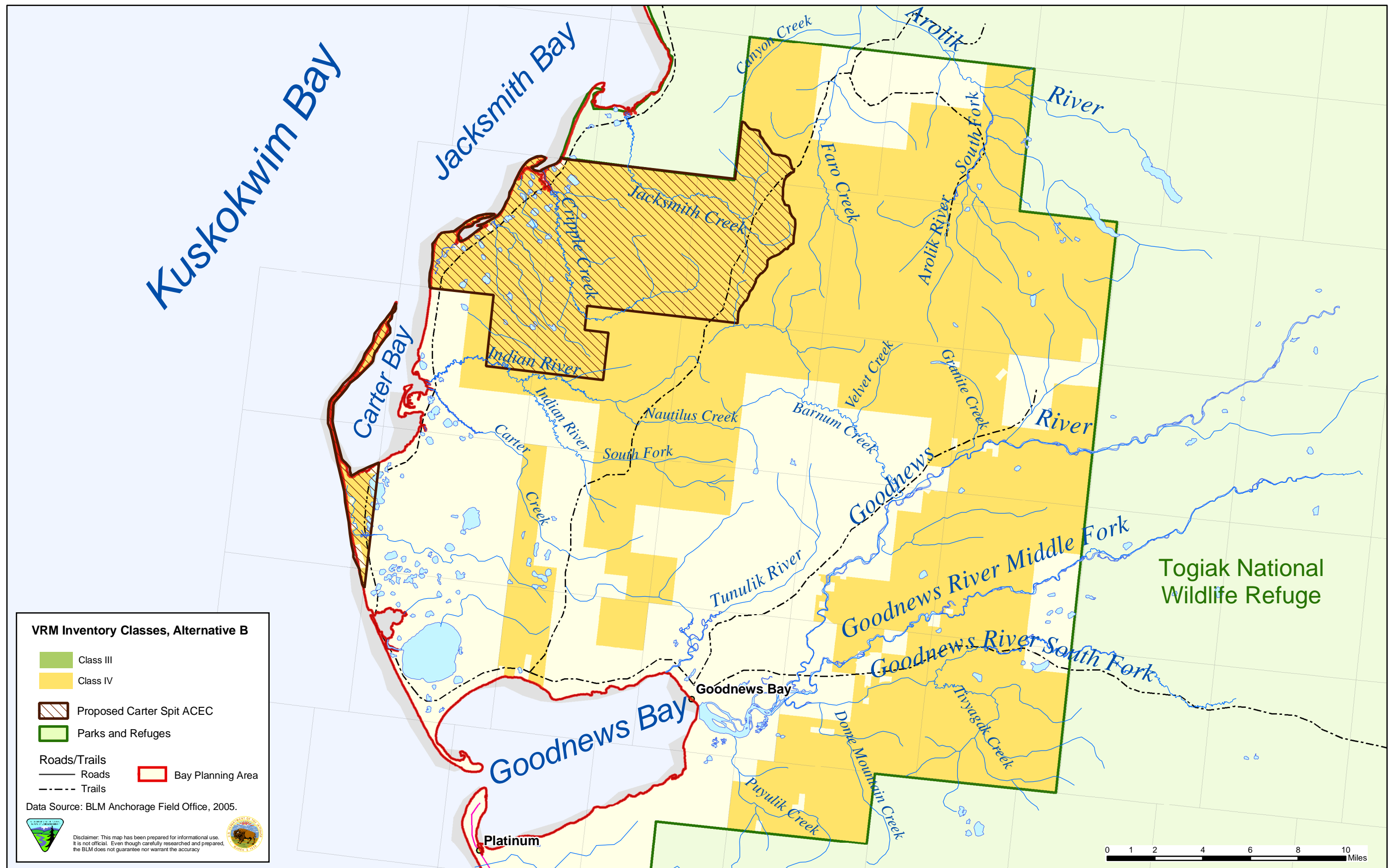


Figure 2.4 - VRM Inventory Classes, Alternative B, Goodnews Planning Block

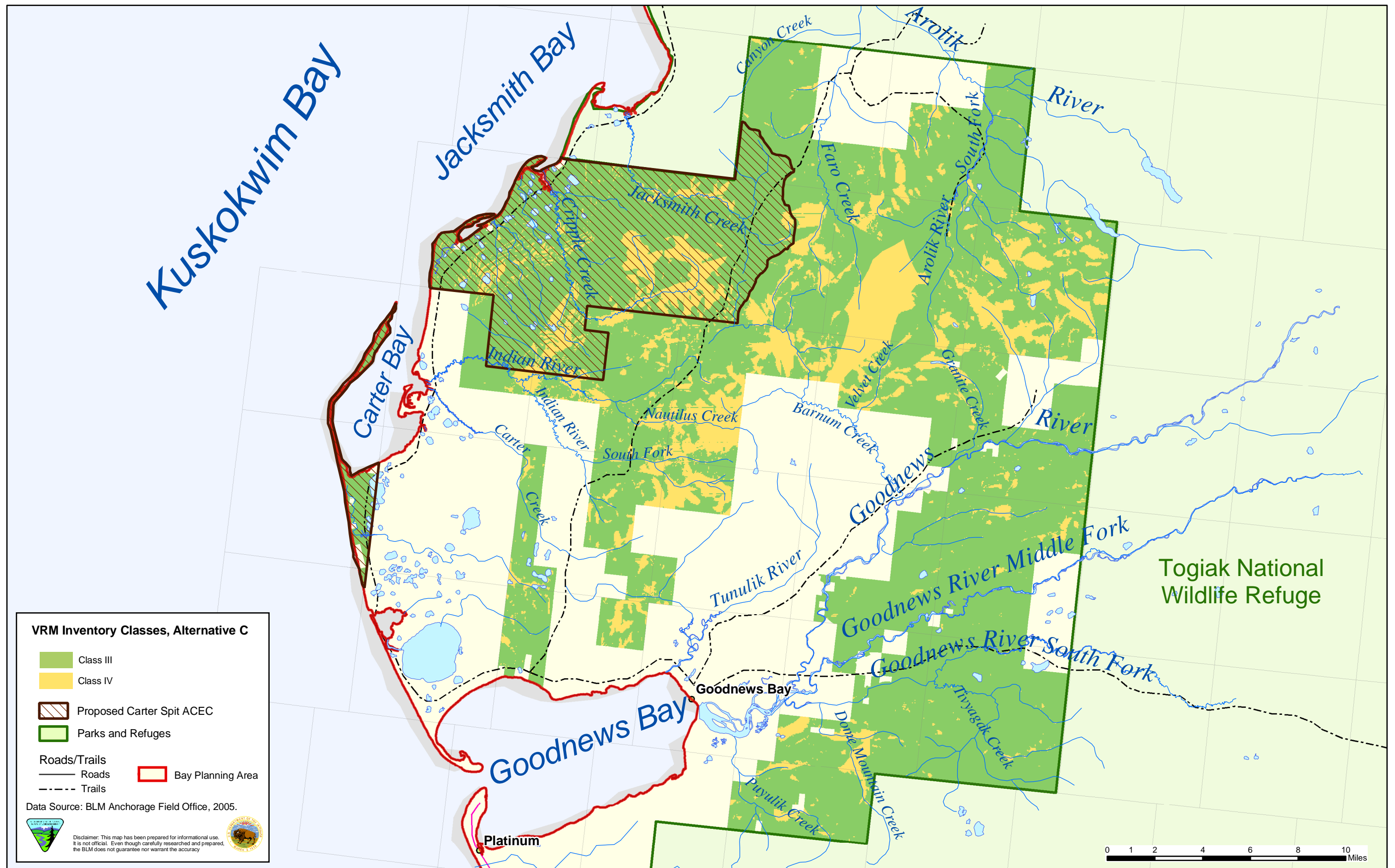


Figure 2.5 - VRM Inventory Classes, Alternative C, Goodnews Planning Block

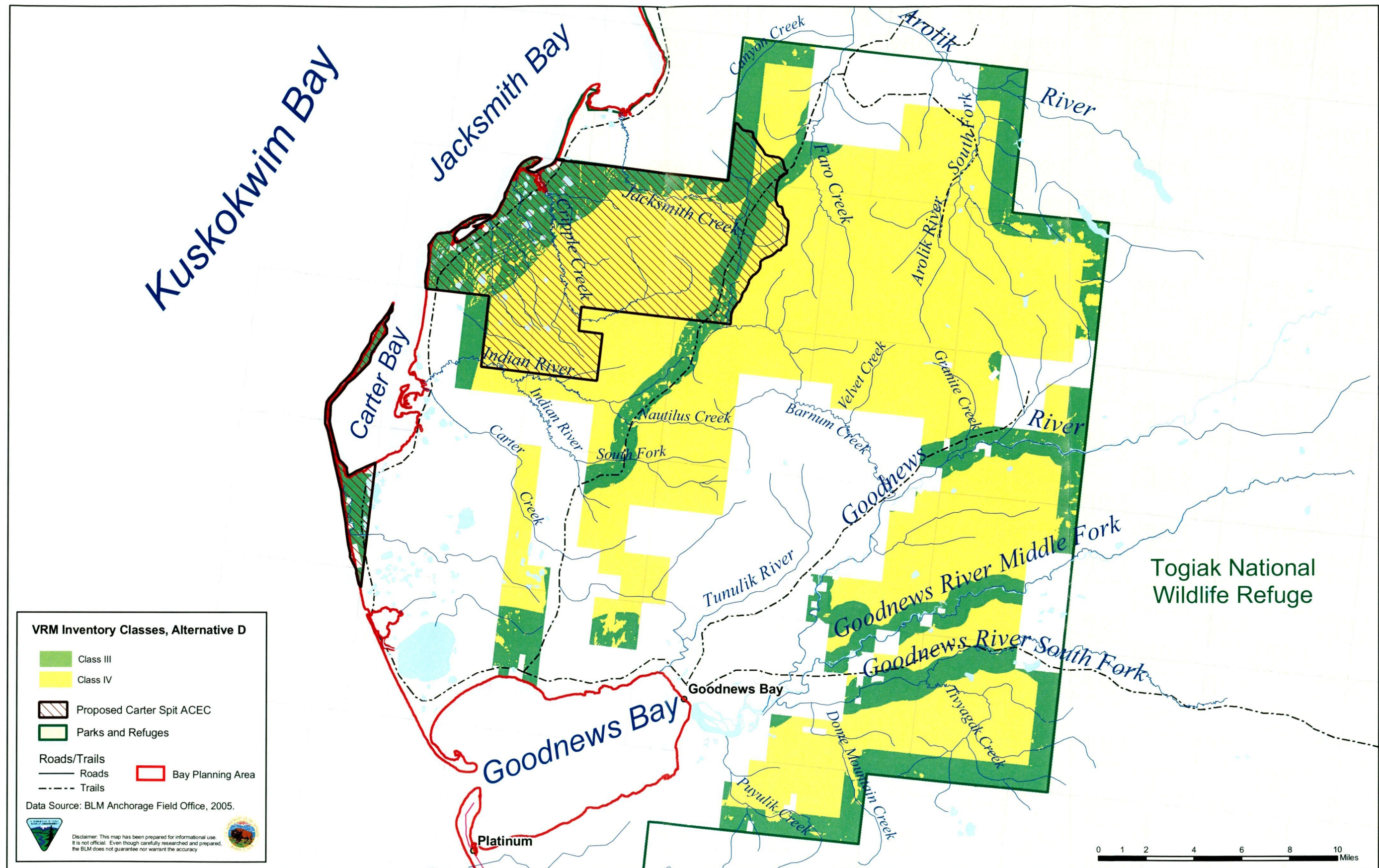


Figure 2.6 - VRM Inventory Classes, Alternative D, Goodnews Planning Block

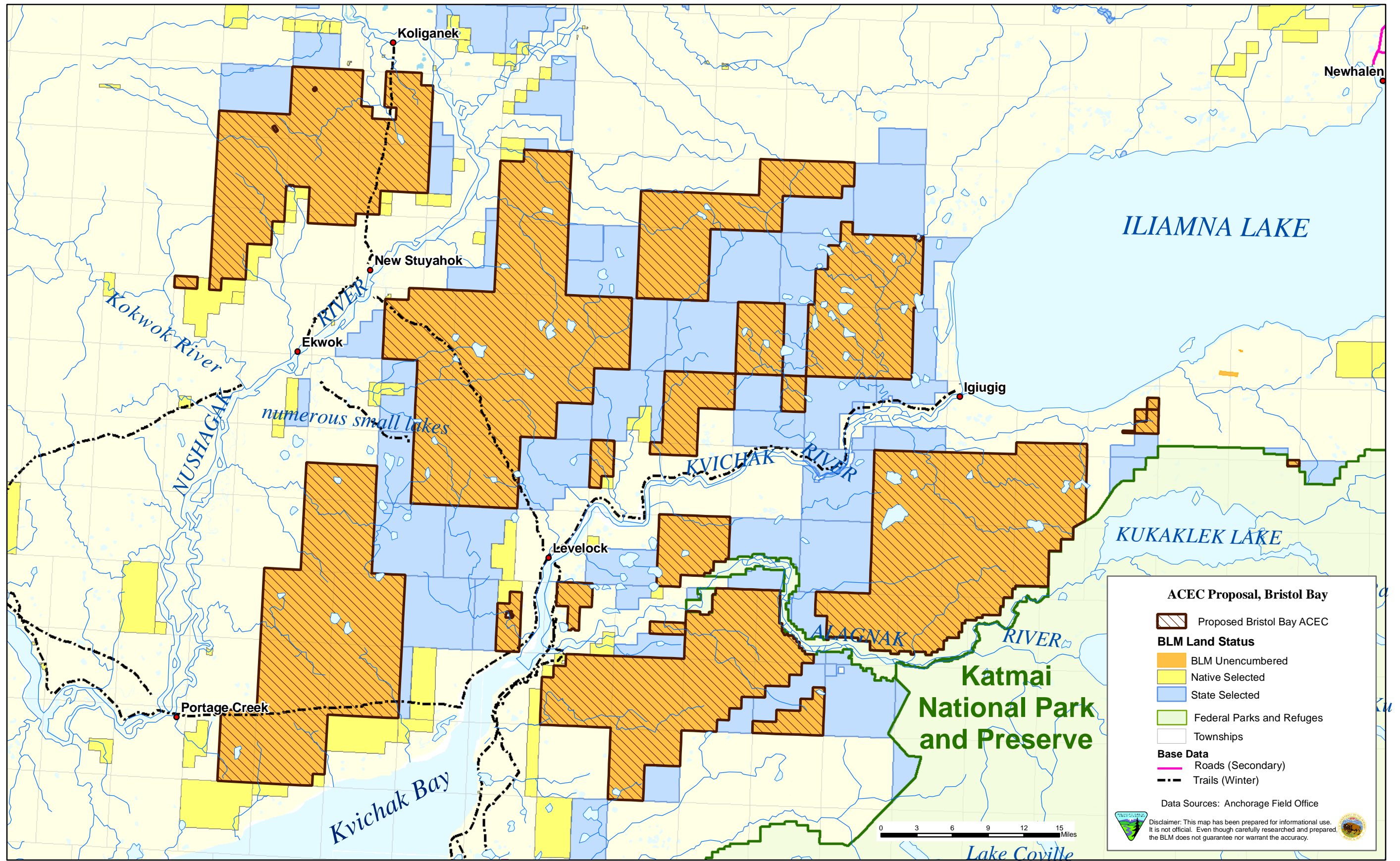


Figure 2.7 Proposed Bristol Bay ACEC

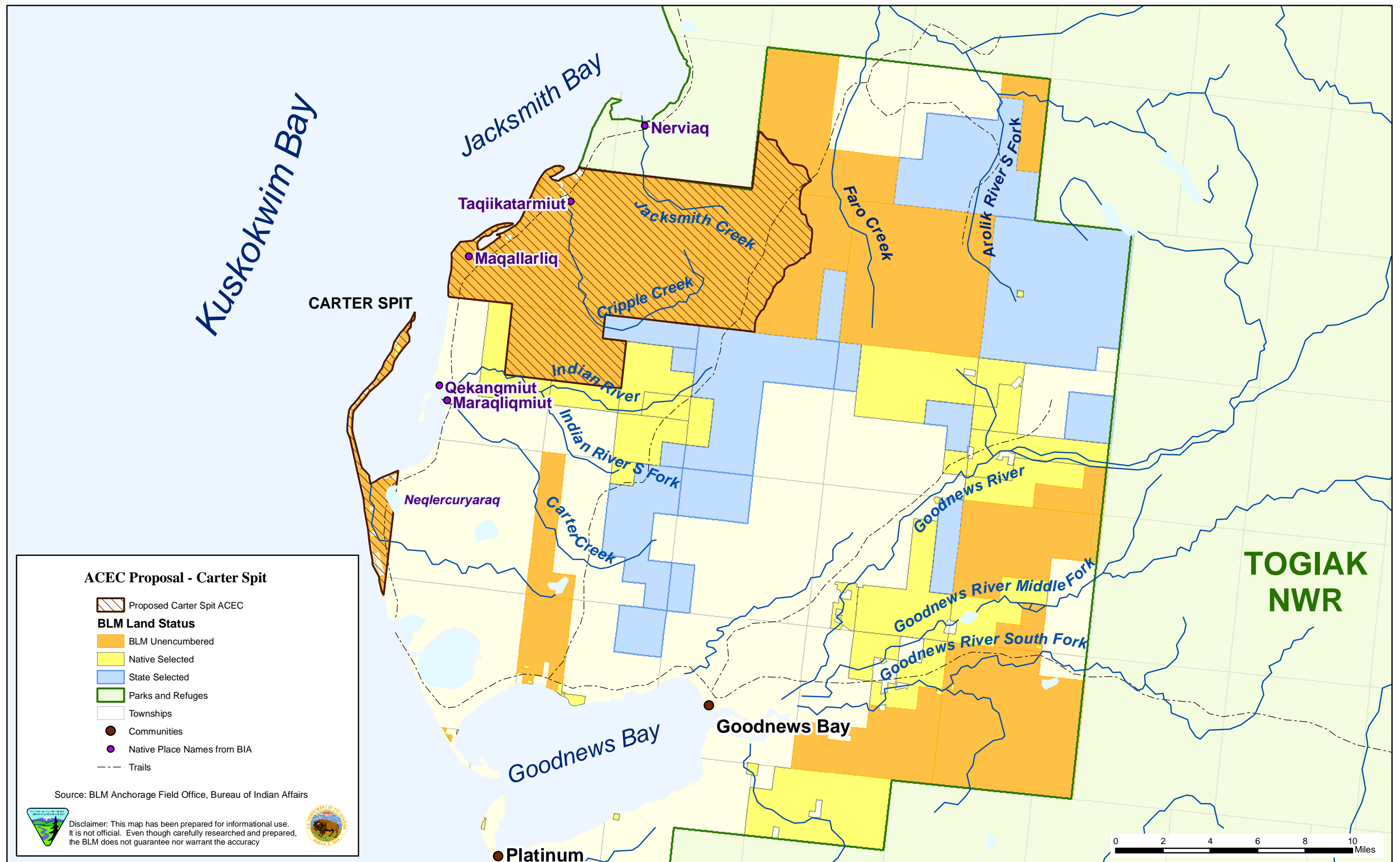


Figure 2.8 Proposed Carter Spit ACEC

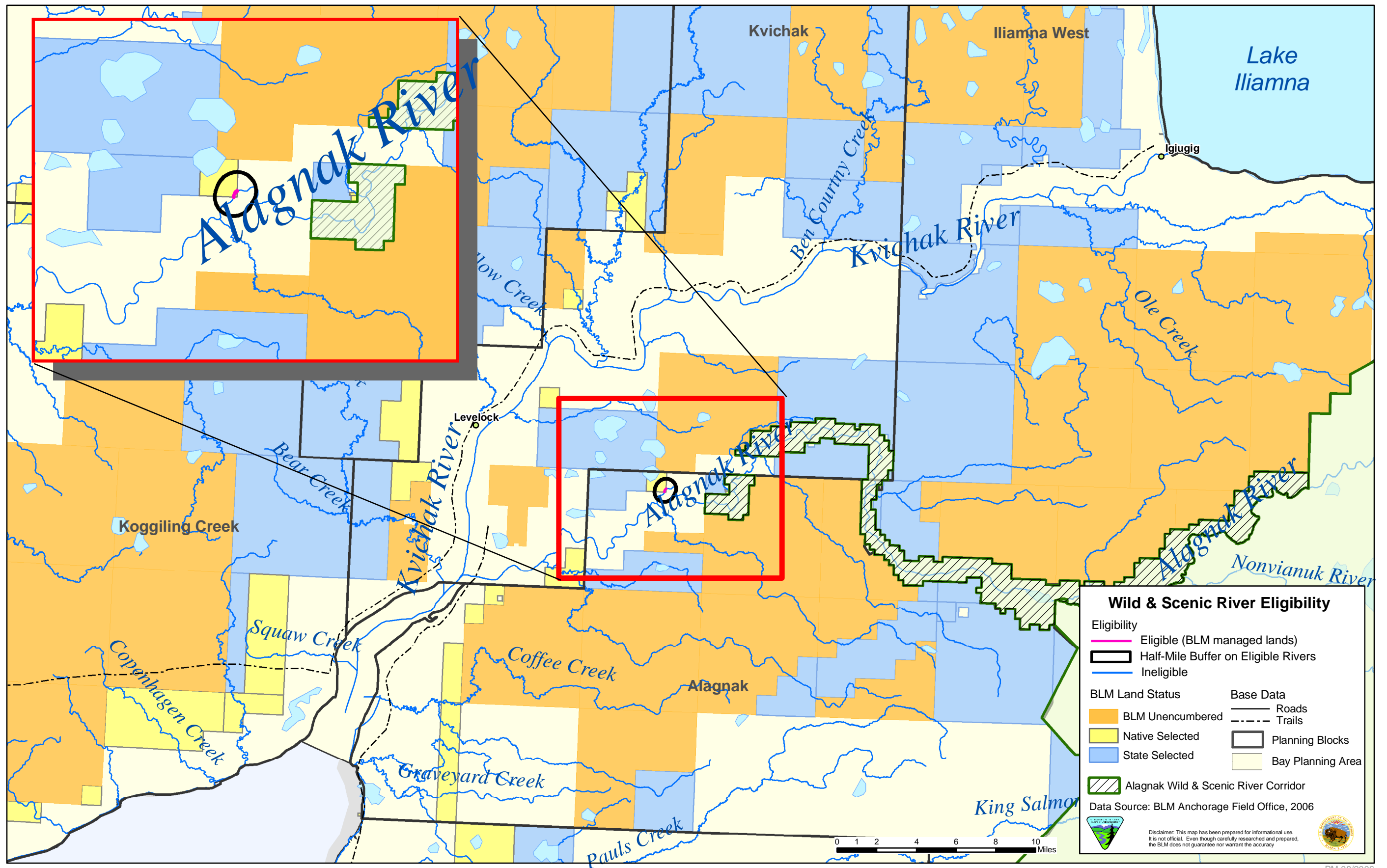


Figure 2.9 - Wild & Scenic River Eligibility - Bristol Bay/Iliamna Region.

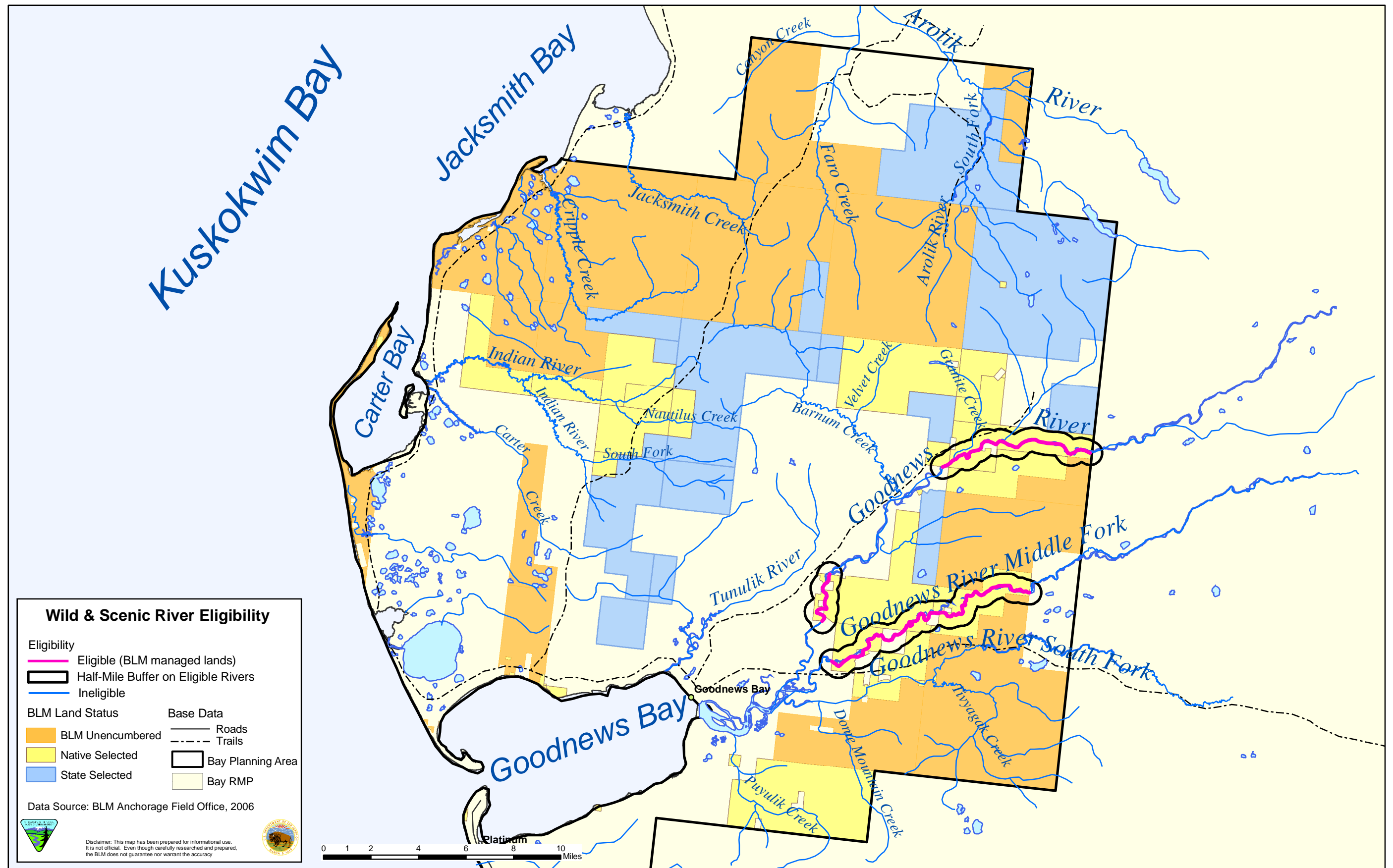


Figure 2.10 - Wild & Scenic River Eligibility - Goodnews Planning Block