

Figure 3.38 Index Map for Withdrawals (other than ANCSA d(1).) See Appendix G.2 for more information.

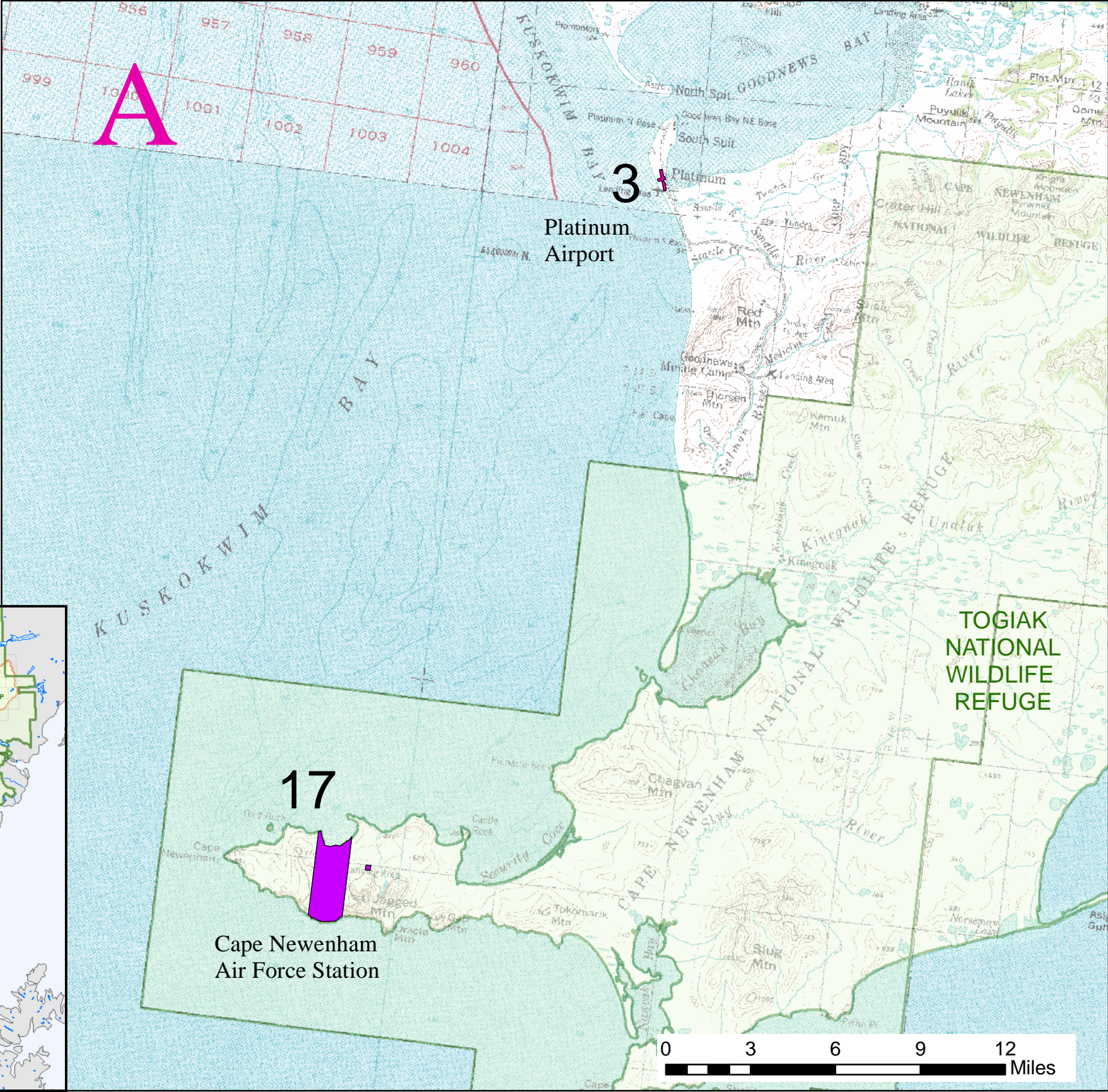
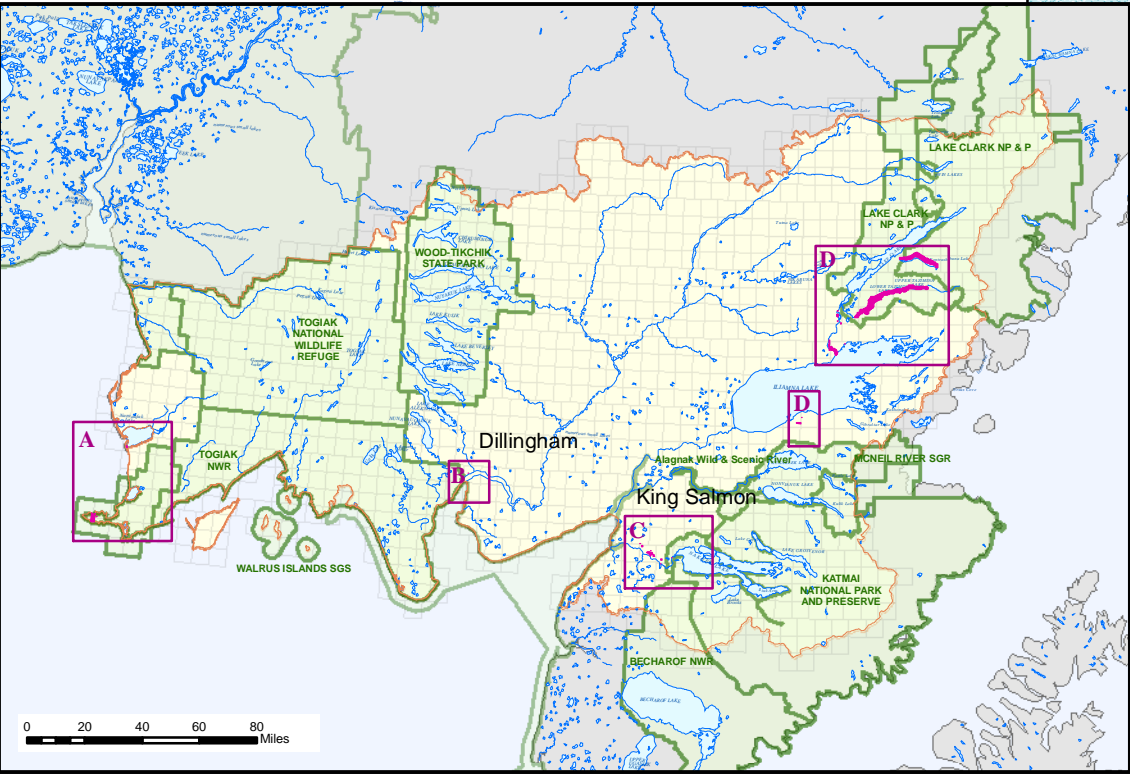
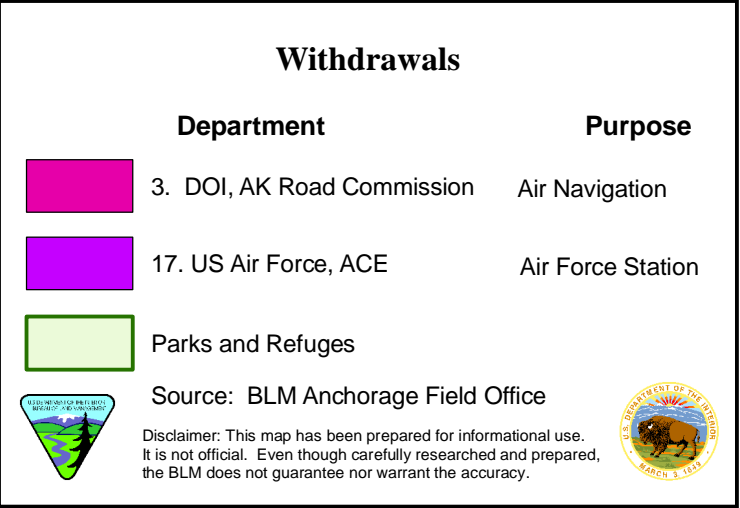


Figure 3.38a. Land Withdrawal Locations (excluding d(1) withdrawals). See Appendix G.2 for more information.

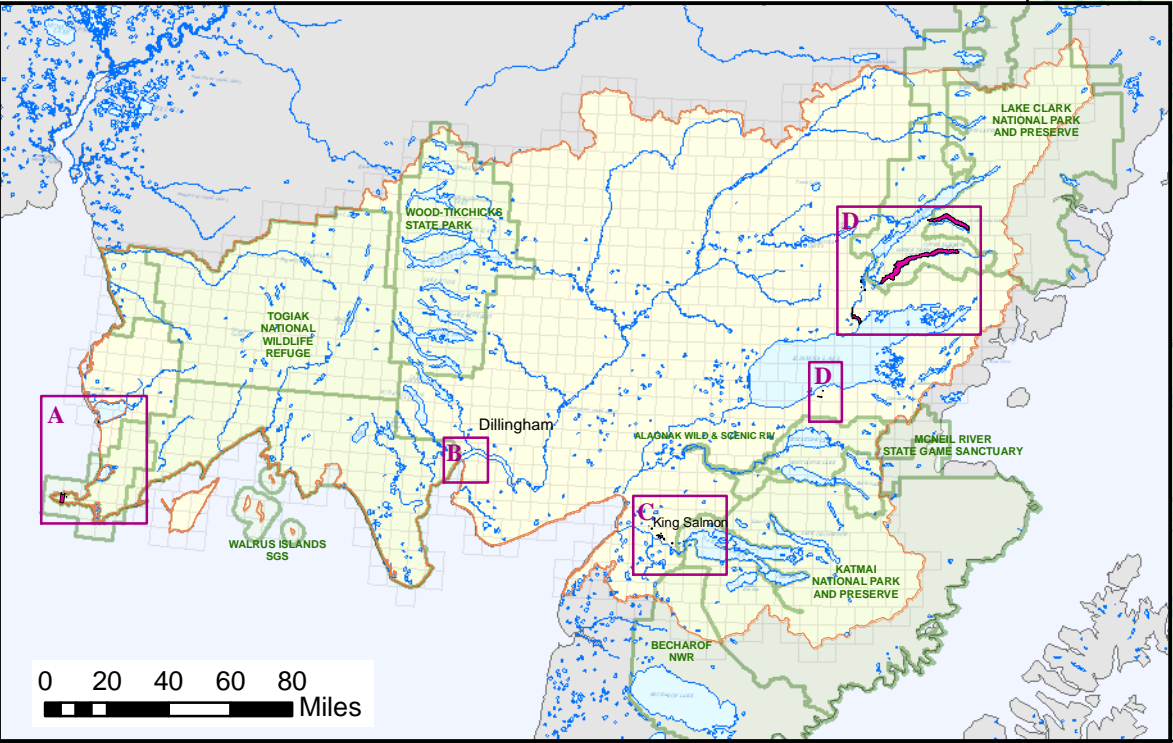
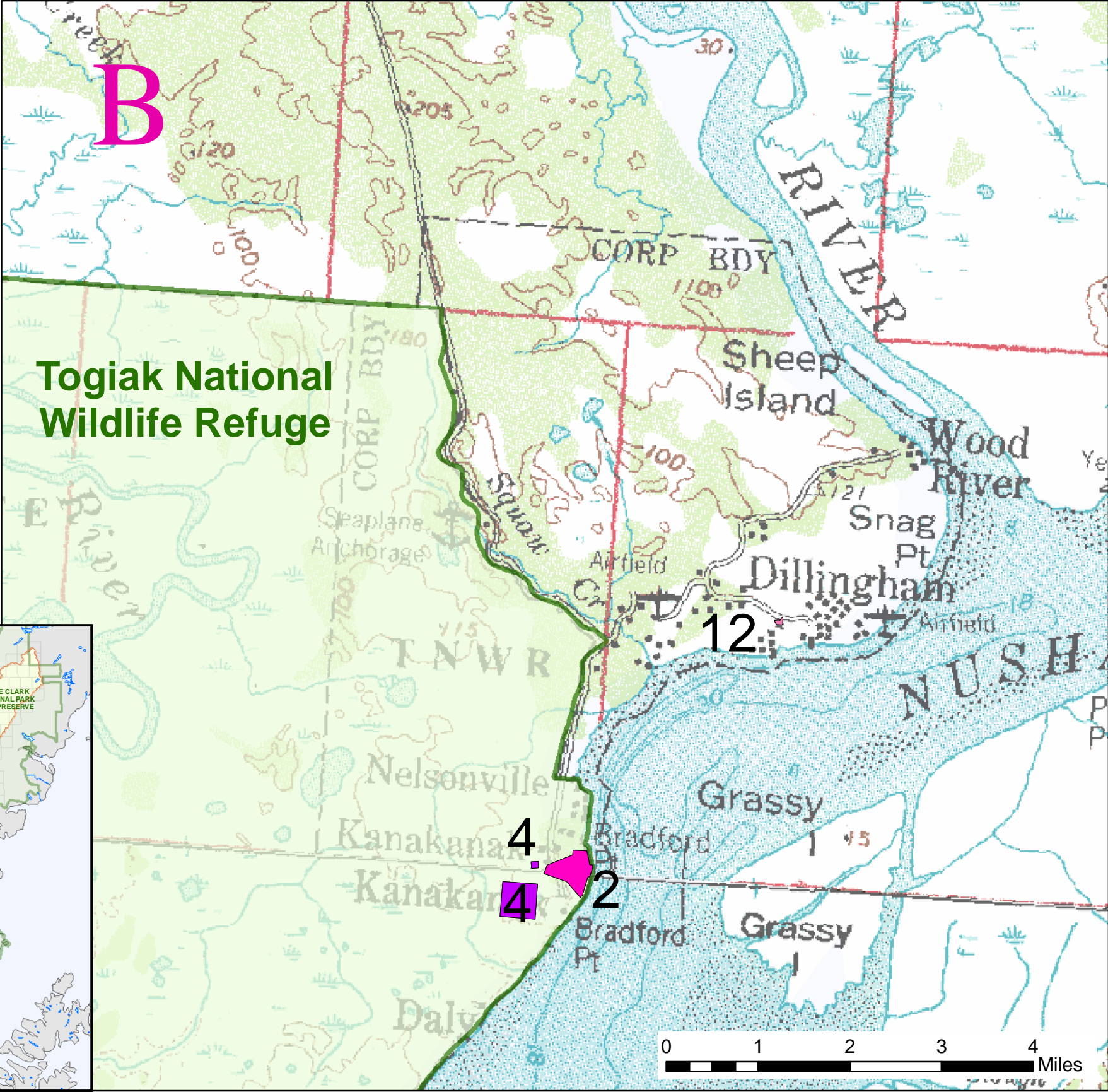
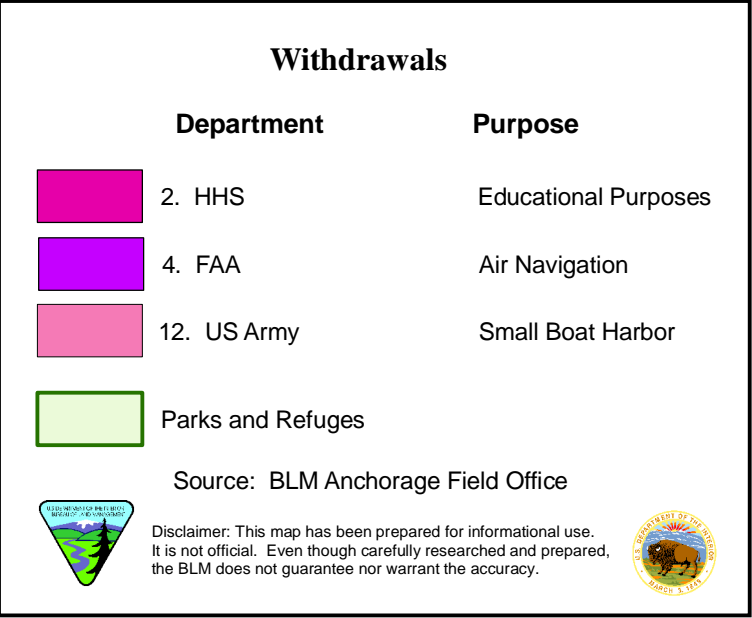
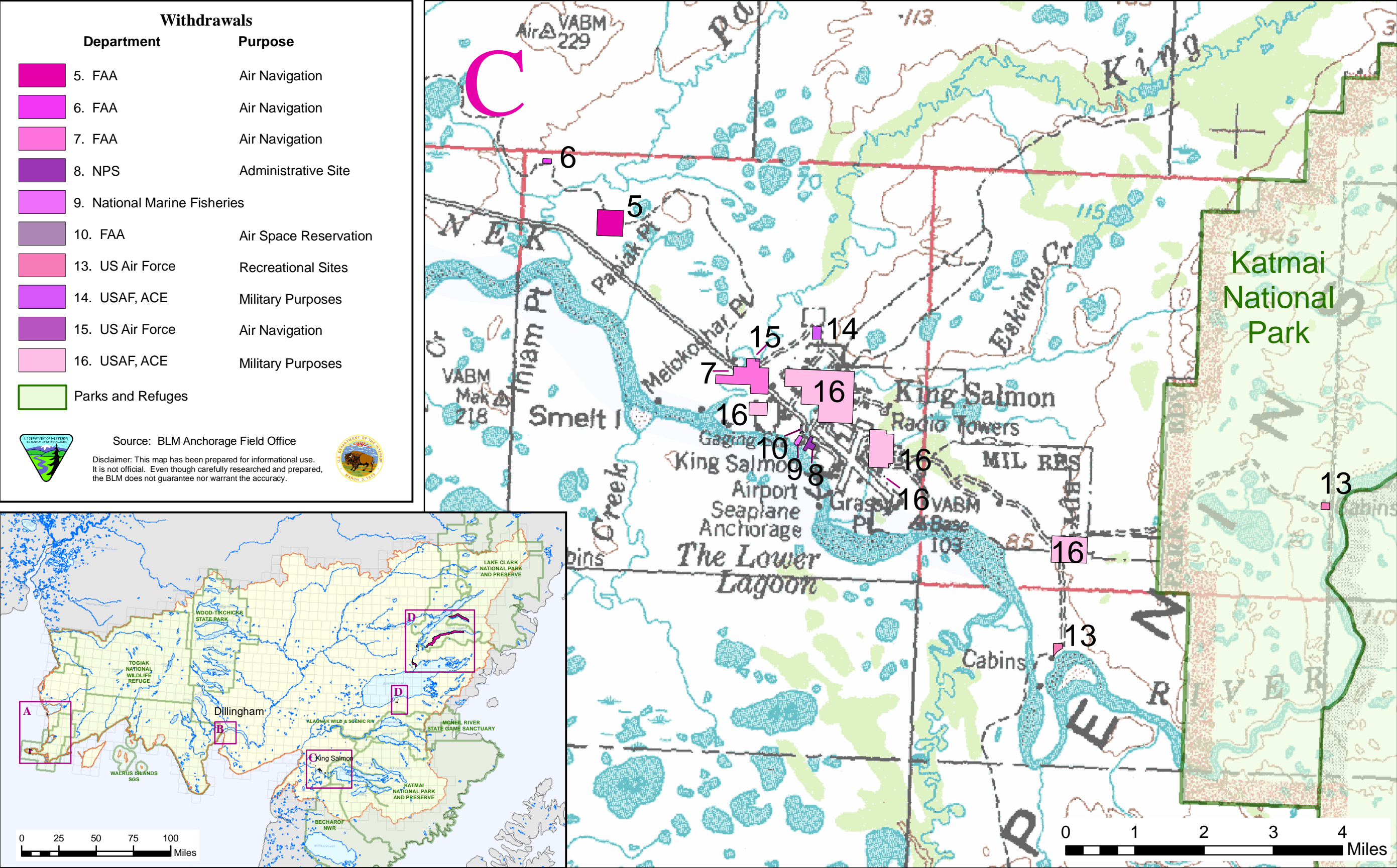


Figure 3.38b Land Withdrawal Locations (excluding d(1) withdrawals). See Appendix G.2 for more information.



b) ANCSA 17(b) Easement Identification and Management

The BLM identifies ANCSA 17(b) easements for travel across Native lands to access publicly owned lands², major waterways, and for travel between communities on lands that will be conveyed to Native corporations. If the easement is reserved to access lands managed by the U.S. Fish & Wildlife Service or the National Park Service, management responsibilities of the easement will be formally transferred to those agencies after the lands are conveyed. BLM manages those easements providing access to BLM-managed lands and State of Alaska lands (Appendix E).

c) Detailed Descriptions of Planning Blocks

This section is separated into 10 different sections with distinct levels of detail and focus for each section. Sections 1-2 are designed to provide a general analysis of areas near Dillingham/Aleknagik, and King Salmon/ Naknek/South Naknek. In these areas BLM manages land in the interim, but is expected to not manage lands after the conveyance process is completed. Sections 3-10 are in depth discussions of individual planning blocks where BLM will retain large tracts of land beyond the finality of the conveyance process. These planning blocks are: Alagnak, Goodnews Bay, Iliamna East, Iliamna West, Koggiling Creek, Klutuk Creek, Kvichak, and Yellow Creek. (Figure 3.2-3.4)

(1) Dillingham/Aleknagik Vicinity

In the area generally located near Dillingham and Aleknagik, BLM is the interim manager of 74,514 acres of land (Figure 3.43). Within this area, all lands are selected for conveyance by Native Corporations and the State of Alaska, or they have been applied for as Native Allotments. Native Corporations have selected 64,678 acres, Native Allotment applications encumber 800 acres, and 9,036 acres of land are selected by the State of Alaska. Almost all lands that have not been prioritized by Native Corporations have been prioritized by the State of Alaska. The exception is two sections 7 and 18 (1228 acres) in T. 10 S., R. 53 W., located about 13 miles east of Aleknagik, which will likely be unencumbered BLM lands at the conclusion of the conveyance process. This land will be surrounded entirely by lands owned by a Native Corporation and the State of Alaska and should be considered for land tenure adjustment such as a land exchange with either entity.

² Publicly owned lands means all Federal, State, or municipal corporation (including borough) lands or interests therein in Alaska, and submerged lands as defined by the Submerged Lands Act. 43 CFR §2650.4-7(b)

This page intentionally left blank.

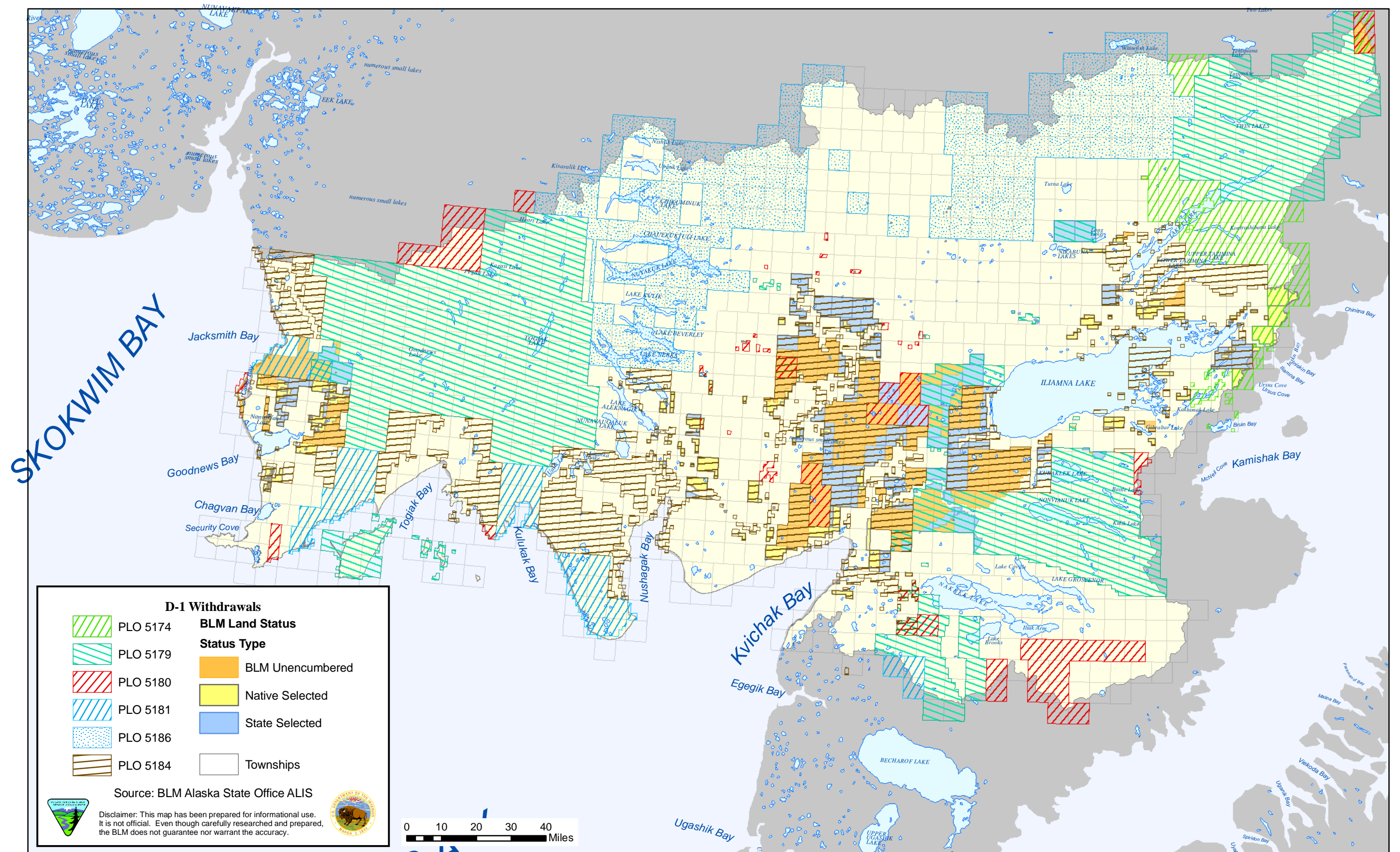


Figure 3.39 D-1 Withdrawals

Within this area, BLM has patented two separate tracts of land under the R&PP Act.

- The Seventh Day Adventists received a patent in 1972 (Patent # 50-73-0080) to 10 acres of land for a church camp located on Lake Aleknagik. The land is described as U.S. Survey 4931; located within T. 9 S., R. 57 W., sec. 26. The case is serialized as A-048645.
- The Catholic Archbishop of Anchorage received a patent in 1984 (Patent # 50-84-0403) to 1.8 acres of land for a church site located in Clarks Point. The land is described as U.S. Survey 4992, Tract B; located within T. 15 S., R. 56 W., sec. 36. The case is serialized as A-052661. (Figure 3.40) The BLM is responsible for on-going compliance of these parcels to insure they are continually used for the purposes for which they were patented.

There are three withdrawals within the vicinity of Dillingham. One for the U.S. Department of Health and Human Services, Alaska Area Native Health Services, Public Health Services, serialized as AA-58074, encompassing 87.47 acres. The second is for the Federal Aviation Administration, serialized as A-58836 and encompassing 95.94 acres. The third withdrawal is for the U.S. Army, serialized as A-52010, encompassing 2.67 acres.

Within this area, there are no rights-of-way or land use authorizations.

(2) Naknek/King Salmon Vicinity

In the area generally located near Naknek, South Naknek and King Salmon, BLM is the interim manager of 29,524 acres of land (Figure 3.44). Within this area, all lands are selected for conveyance by Native Corporations and the State of Alaska, or they have been applied for as Native Allotments. Native Corporations have selected 17,635 acres, Native Allotment applications encumber 374 acres, and 11,515 acres of land are selected by the State of Alaska. All lands not prioritized by Native Corporations have been prioritized by the State of Alaska. BLM anticipates owning no lands in this area at the conclusion of the conveyance process.

This page intentionally left blank.

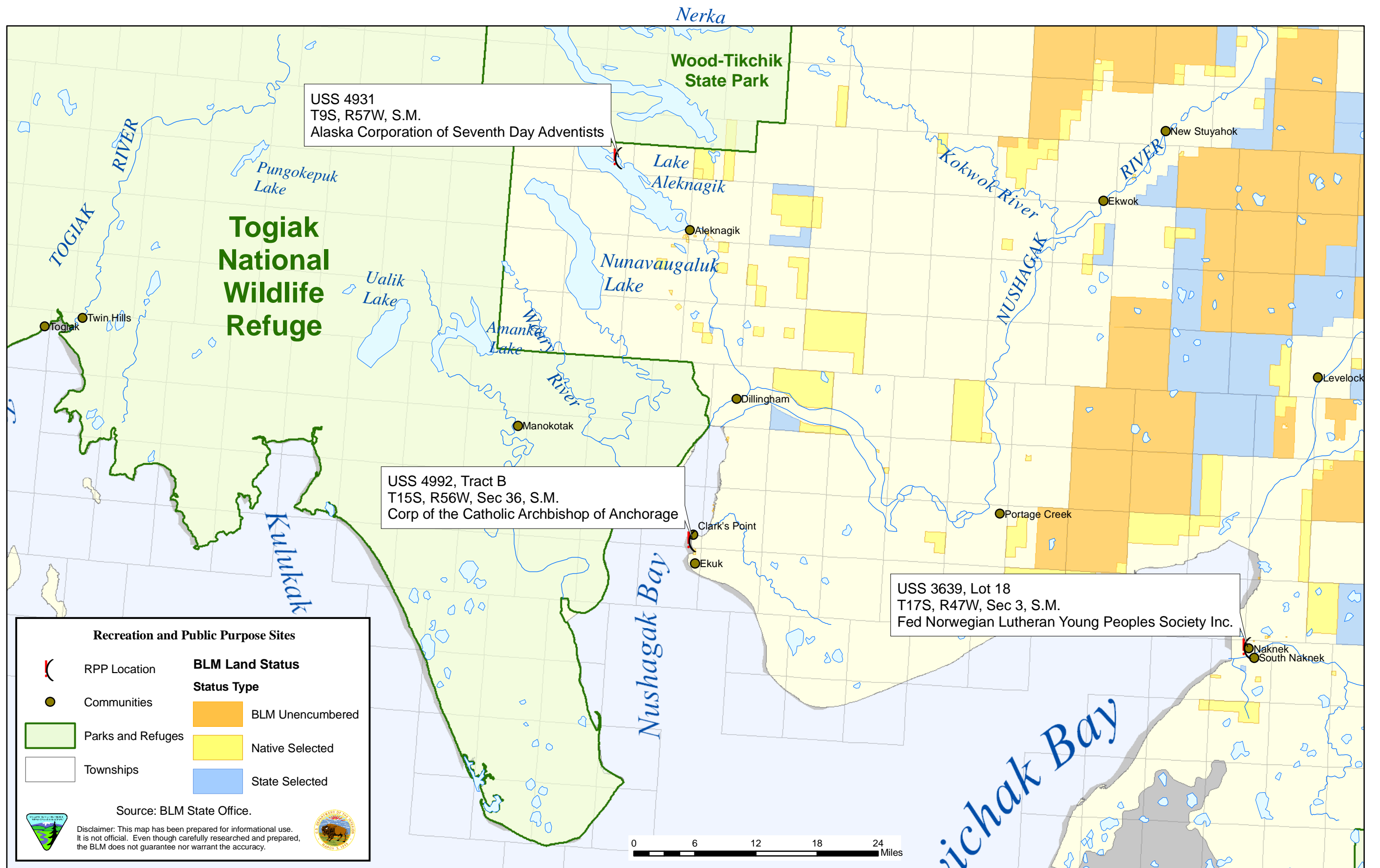


Figure 3.40 Recreation and Public Purpose Sites

Within this area, BLM has patented one tract of land under the R&PP Act. The Federation of Norwegian Lutheran Youth Peoples Society Inc. received a patent in 1962 (Patent # 1224794) to 1.73 acres of land for a church site located in Naknek. The land is described as U.S. Survey 3539, lot 3; located within T. 17 S., R. 47 W., sec. 3. The case is serialized as A-031707. The BLM is responsible for on-going compliance of this parcel to insure it is continually used for the purposes for which it was patented. (Figure 3.40)

Two rights-of-way have been issued in this area under FLPMA authority.

- BLM issued a right-of-way for a power line to the Naknek Electric Association in 1960. Serialized as A-051081, the right-of-way is 40 feet wide and 15.1 miles in length, encumbering 73.2 acres of land. The power line is located in T. 17 S., R. 45 W., T. 16 S., R. 46 W., T. 17 S., R. 46 W., and T. 17 S., R. 47 W. As lands were patented along the route of this line, they would have been subject to this right-of-way. This right-of-way expires on July 10, 2008. If the lands remain under BLM's jurisdiction there will be an option to renew.
- BLM issued a right-of-way for a road to the Bristol Bay Borough in 1996. Serialized as AA-077688, the right-of-way is 50 feet wide and 1,110 feet in length, encumbering 1.26 acres of land. The road is located in T. 17 S., R. 45 W. This right-of-way expires on May 1, 2026, with an option to renew.

There are ten withdrawals within the vicinity of Dillingham. Four withdrawals are for the Federal Aviation Administration, serialized as: A-46709, encompassing 91.81 acres; serialized as A-50813, encompassing 5 acres; A-53428, encompassing 133.75 acres; AA-65121, encompassing 1.58 acres. The National Park Service has one withdrawal serialized as A-42044, encompassing 11.43 acres. The National Marine Fisheries has one withdrawal serialized as A-72642, encompassing 6.29 acres. The U.S. Air Force has four withdrawals serialized as A-23000, encompassing 16.97 acres; A-31940, encompassing 15 acres; AA-82862, encompassing 1.2 acres; AA-2838, encompassing 640 acres.

Within this area, there are no land use authorizations or areas identified for land tenure adjustment.

(3) Alagnak Planning Block

The Alagnak Planning Block is bordered by the Alagnak Wild and Scenic River on the Northeast, the Bristol Bay Fisheries Reserve (Kvichak River) on the west the Katmai National Park and Preserve on the East and Native or State land to the North and South (Figure 3.45). The area contains about 319,448 Acres. Once all selected lands have been conveyed in this planning block, we anticipate BLM will manage approximately 125,381 acres of public land. Currently BLM is the interim manager of about 64,643 acres of land. Native Corporations have prioritized 7,516 acres, and the State of Alaska has prioritized 57, 127 acres. Within the life of this plan, those lands should be conveyed out of Federal ownership.

This page intentionally left blank.

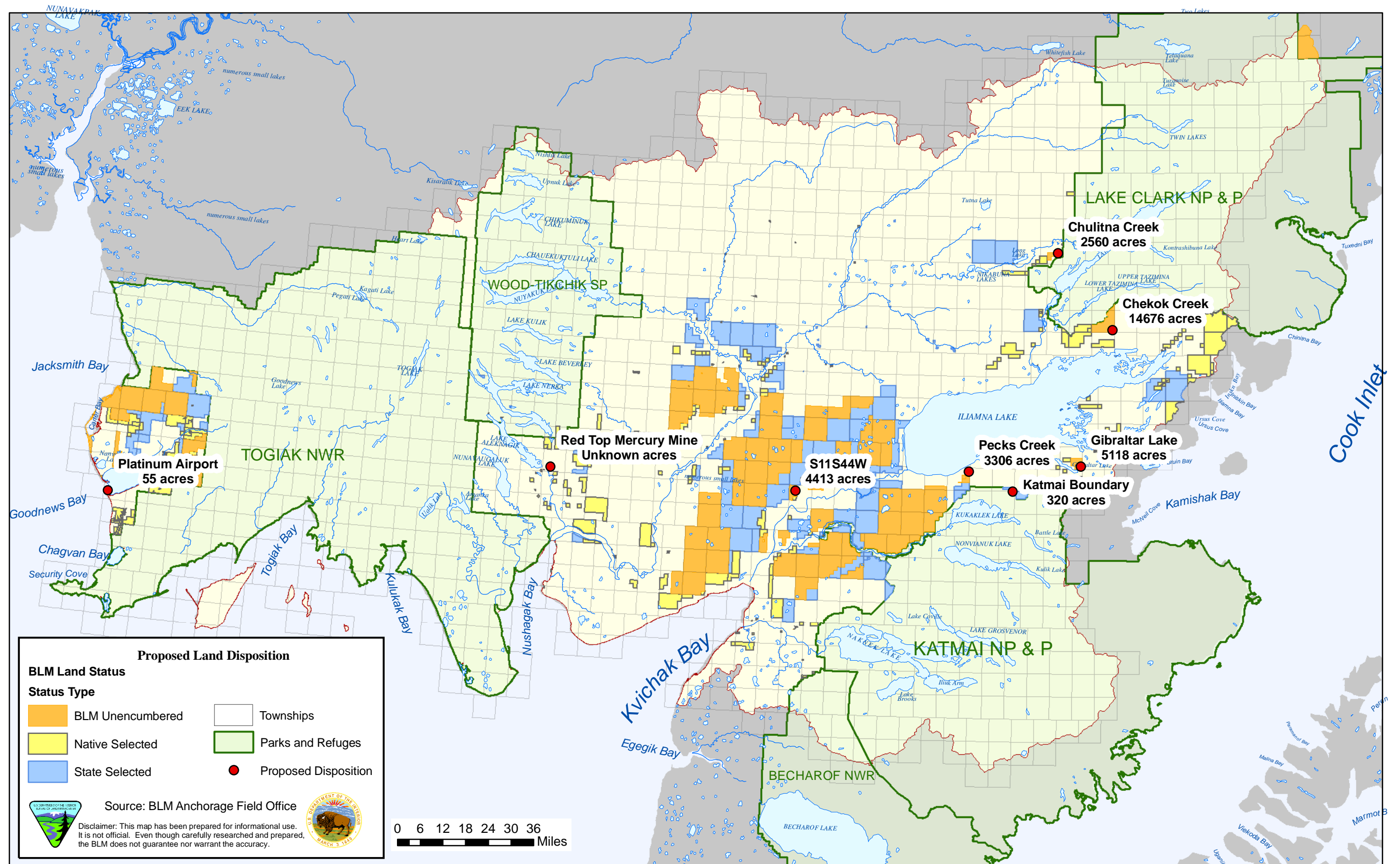


Figure 3.41 Proposed Land Disposition

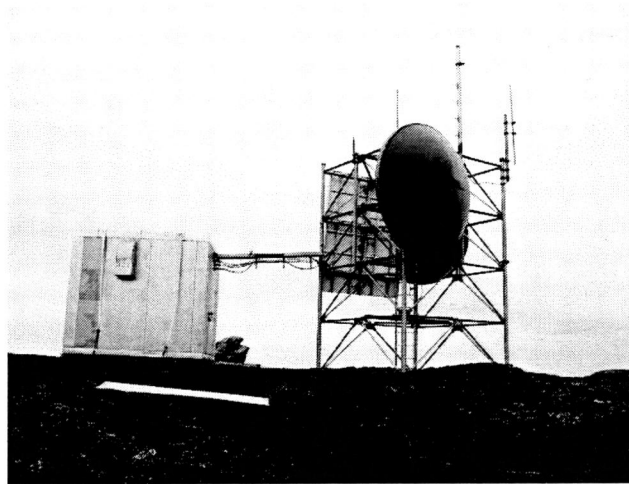
Land Use Authorizations/Rights-of-Way

Figure 3.46 Bristol Bay Cellular Partnership Communications Site

There is one right-of-way authorized in the Alagnak Planning Block in Section 33, T. 14 S., R. 41 W., Seward Meridian. Bristol Bay Cellular Partnership has maintained a communications site in that section since May 2000 under land use authorization AA - 081909 (Figure 3.42).

As these lands are on the State's selection priority list, these lands will likely be conveyed out of Federal ownership and jurisdiction over this right-of-way will be transferred. There are no Land Use Authorizations within this planning block.

Alagnak Planning Block 17 (b) Easements

Within the Alagnak Planning Block there are 4 easements. One is for a site easement, one is for a proposed 25 ft. wide trail, one is for a 25 ft. existing trail, and one is for a 25 ft. existing winter trail. Table 3.20 provides information regarding each easement within this planning block. Figure 3.43 is an overview map of the ANCSA 17(b) easement reservations in this planning block.

Table 3.20. 17(b) Easements within the Alagnak Planning Block

Easement I.D.	Administrative Agency	Land Owner IC/Pat#	Land Access	Easement Type	Location Information
bbleve013 EIN 8b C6 D9 Dillingham A-2	BLM	IC 193 Levelock Natives Limited	Public Land	1 acre site easement	Sec. 20 T.13 S., R.44 W.
N/A EIN 8c C4 Dillingham A-2	BLM	IC 193 Levelock Natives Limited	Public Land	Proposed 25ft trail	Beginning in Sec. 20 T.13 S., R.44 W., southerly to public lands
bb / NA EIN 29d C5 Naknek D-3	BLM	50-91-0600 Paug-vik Inc. Ltd	Public Land	Existing 25 ft. trail	Beginning in Sec. 33 T.14 S., R.46 W. Easterly to public lands
bb / NA EIN 14 C3,D1,D9 Naknek D-3	BLM	50-91-0600 Paug-vik Inc. Ltd	Public Lands	Existing 25 ft. trail. Winter use	Sec. 3 T.17 S., R.47 W., Northerly to Village of Levelock (transportation between communities)

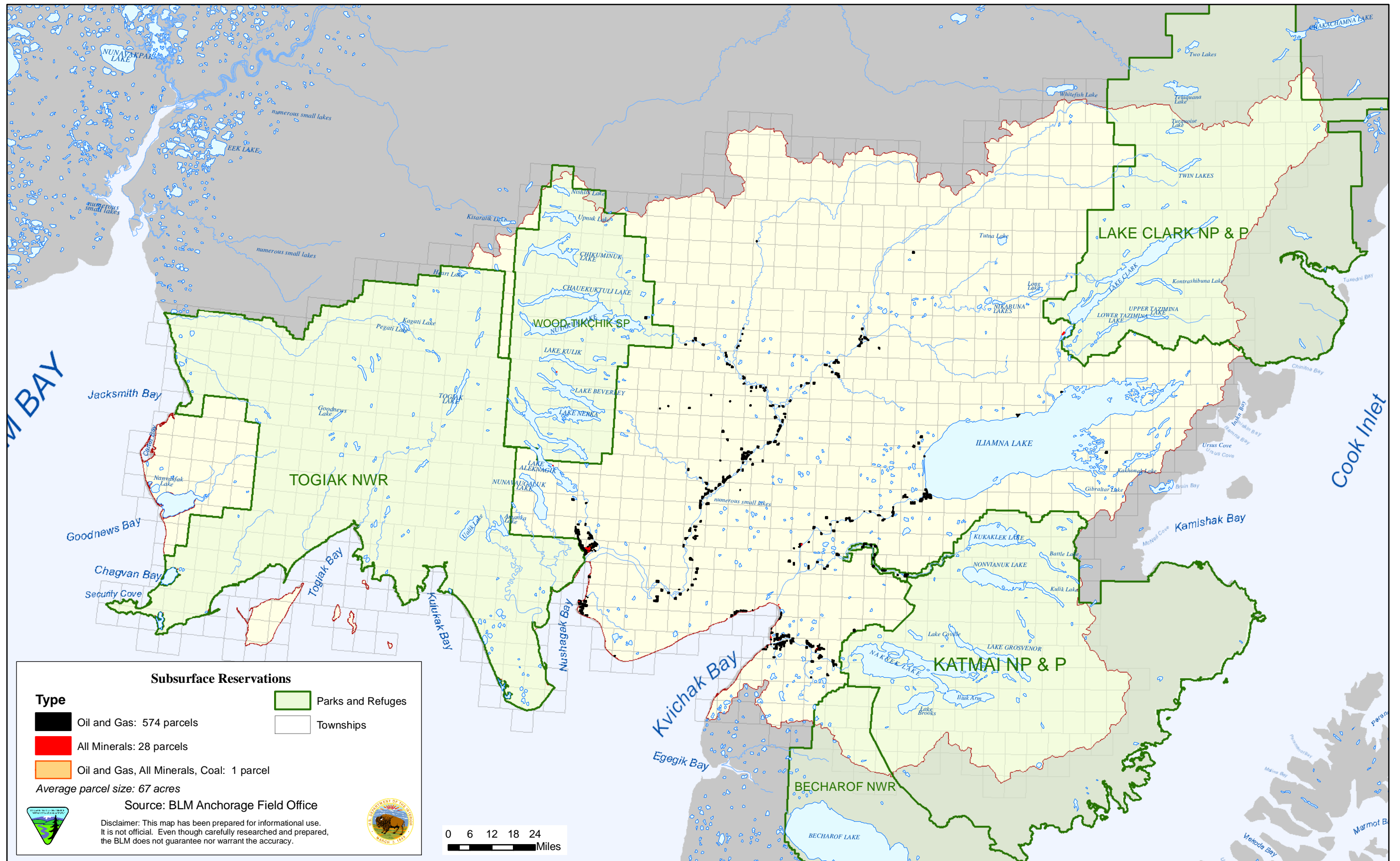
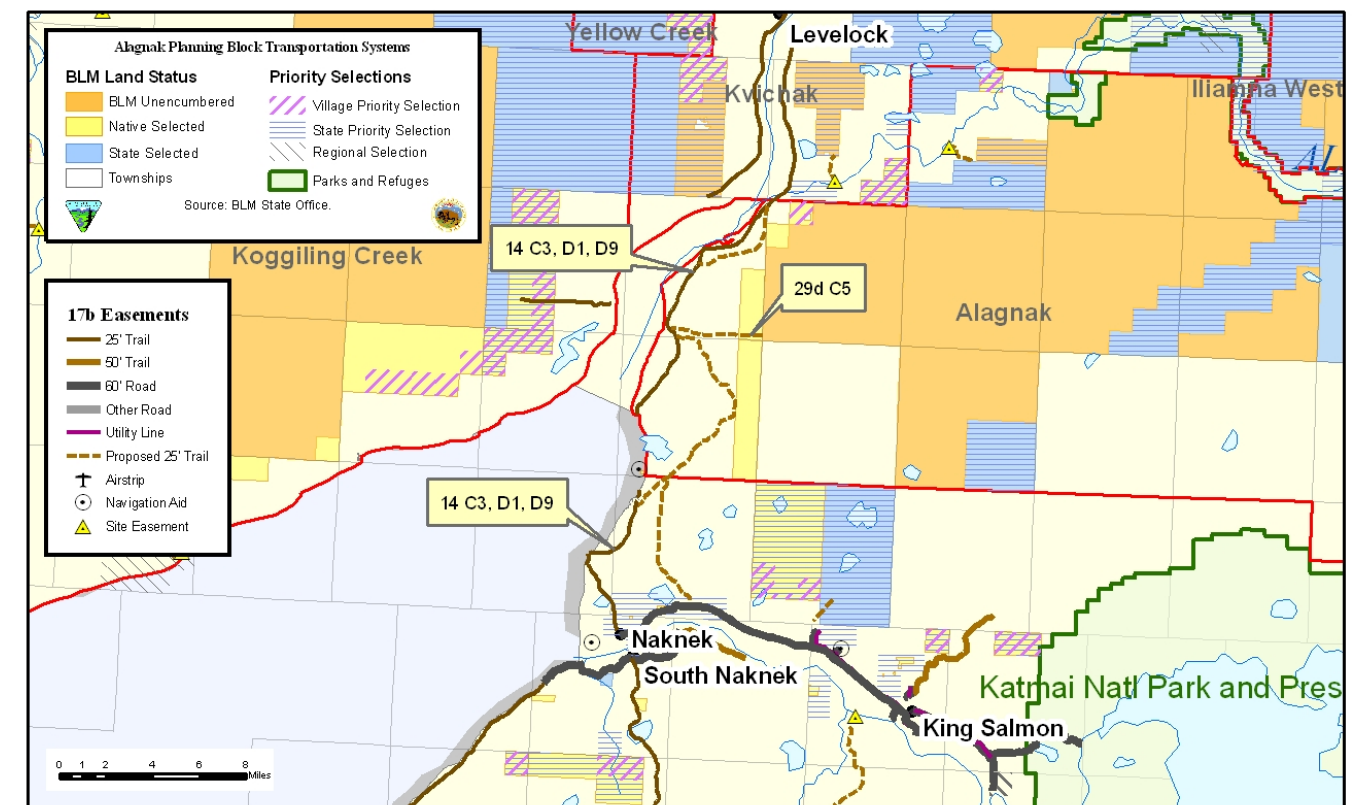
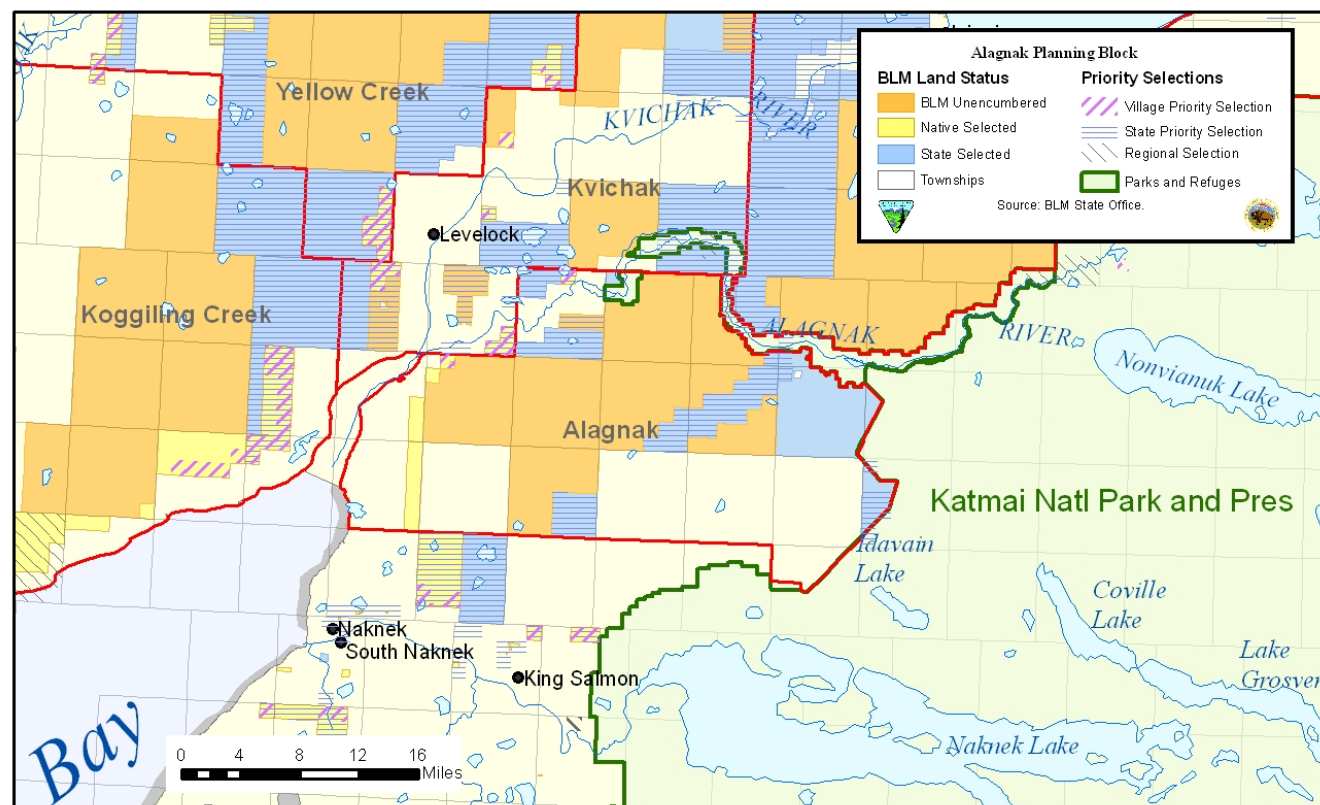
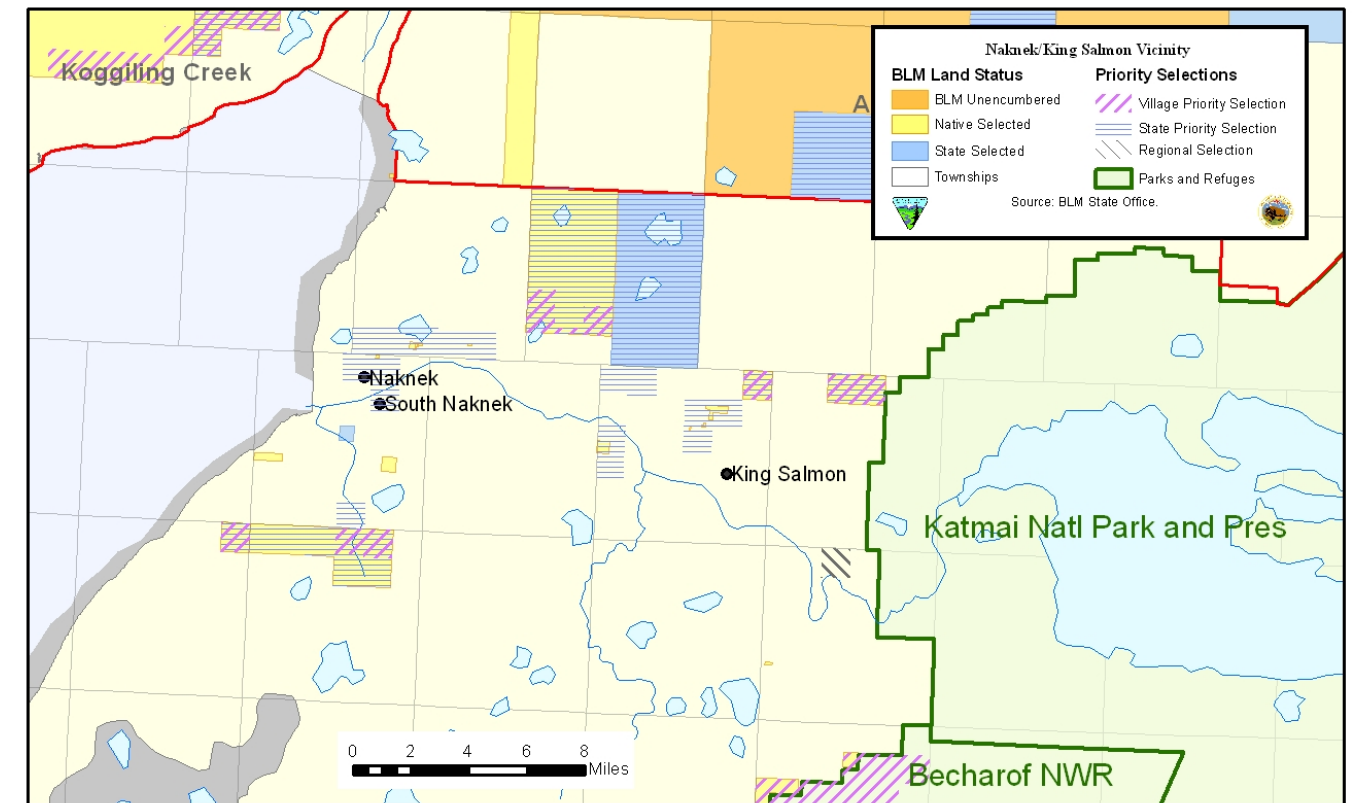
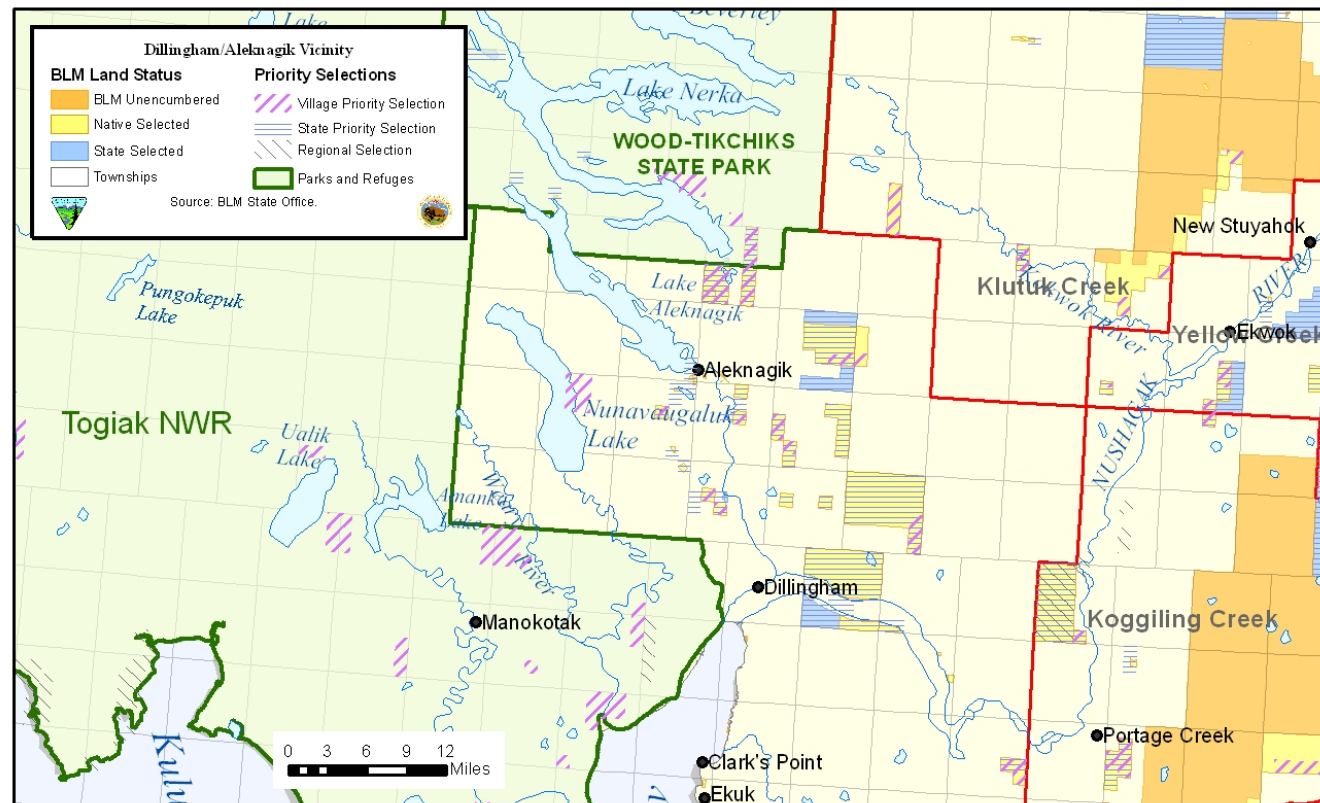


Figure 3.42 Subsurface Estate



Withdrawals. There are no withdrawals within the planning block.

Recreation and Public Purposes Act Sites. There are no Recreation and Public Purposes Act Sites within the planning block.

Land Tenure Adjustment. There are no areas for Land Tenure Adjustment within the planning block.

Subsurface Estate. There are approximately 692 acres of land where the surface estate has been conveyed and the United States has reserved an interest in "Oil & Gas" within the planning block. There are 1.19 acres of land where the surface estate has been conveyed and the United States has reserved an interest in "All Minerals" within the planning block (Figure 3.42).

(4) Goodnews Bay Planning Block

The Goodnews Bay Planning Block is bound by the Togiak National Wildlife Refuge on the North, South and East and by the Kuskokwim Bay and the Bering Sea on the West. The area contains about 525,727 Acres (Figure 3.48). Once all selected lands have been conveyed in this planning block, we anticipate BLM will manage approximately 110,843 acres of public land. Currently BLM is the interim manager of about 210,248 acres of land. Native Corporations have prioritized 85,979 acres, and the State of Alaska has prioritized 124,269 acres. Within the life of this plan, those lands should be conveyed out of Federal ownership.

Land Use Authorizations/Rights-of-Way

No land use authorizations or Rights-of-Way are authorized in this Planning Block.

ANCSA 17(b) Easements

There are several easements reserved within the Goodnews Planning Block (Table 3.21).

Table 3.21. 17(b) Easements within the Goodnews Planning Block

Easement I.D.	Administrative Agency	Land Owner IC/Pat.#	Land Access	Easement Type	Location Information
bb / NA EIN 1 C3,C5,D1,D9 M Kuskokwim Bay D-1	BLM	50-95-0437 Arviq Inc.	Public lands	Existing 25 foot trail Seasonal use (winter) Northwesterly to public land	Sec.19 T.12 S., R. 74 W., sm
bb / NA EIN 3 C3, C4, D1, D9 Goodnews A-8	BLM	IC 1660 Calista Corp.	State of Alaska	Existing 25 foot trail Southwesterly to Sec.10 T.8 S., R. 72 W. sm	Sec.31 T. 7 S., R.71 W., sm
bb / NA EIN 3a C3, C4,D1,D9 Goodnews B-7	BLM	IC 1660 Calista Corp.	State of Alaska	Existing 25 ft (winter) trail from Sec.27 T.8 S., R.72 W.southwesterly to Sec. 27 T.8 S., R. 72 W. sm	Sec. 27 T.8 S., R. 72 W., sm
bb / NA EIN 3b C3, C4, D1, D9 Goodnews B-7	BLM	IC 1660 Calista Corp.	State of Alaska	Existing 25 ft (summer) trail from Sec. 10 T.8 S., R. 72 W. southwesterly to Sec. 27 T.8 S., R. 72 W. sm	Sec10 T. 8 S., R.72W., sm
bb / NA EIN 4 C3,C4, D1,D9 Goodnews B-6	BLM	IC 1660 Calista Corp.	Public Land	Existing 25 ft trail. <u>Winter</u> Northeasterly to intersect w/EIN 6a, C4,D9 <u>Proposed</u> a 50ft. trail in Sec.15 T.10 S.,R.71W. sm to 1 acre site EIN 6 C4, D9	Sec.21 T.10 S., R.71 W., sm
bb / NA EIN 15 C4, D1 Goodnews B-6	BLM	Easement not with the Conveyance Document		1-acre Site Easement EIN C4, D1 identified to be reserved when land is conveyed. <u>Existing</u> trail EIN 15a C4, D1	

Figure 3.45 depicts three trails located in T. 8 S., R. 72 W., Seward Meridian. They are reserved in IC 1660. They are all twenty-five foot wide trails. EIN 3a C3, C4, D1, D9 is limited to use in the winter only. EIN 3b C3, C4, D1, D9 is limited to summer use only. All allow for transportation from public lands (BLM managed lands on the South) to public lands (The Togiak National Wildlife Refuge on the North). The State has a priority selection on the lands to the south and Calista Corporation has a priority selection on some of the lands to the north. Ultimately, the trail system will provide access from State Lands to the Togiak National Wildlife Refuge.

Figure 3.48 depicts three trail easements and two site easements. Trail EIN 4 C3, C4, D1, D9 was reserved in IC 1660 and provides access from the village of Goodnews Bay to State Public lands in Section 25, T. 9 S., R. 71 W., Seward Meridian. The trail crosses both Native-Selected and Native-conveyed lands. The selected lands are priority selections for Calista Corporation. The trail is twenty-five (25) feet wide from south to north until it intersects with EIN 6a, C4, D9 in Section 15, T. 10 S., R. 71 W., Seward Meridian where it changes to a width of fifty (50) wide until it reaches the State lands in Section 25, T. 9 S., R. 71 W., Seward Meridian.

Easement EIN 6a, C4, D9 is a proposed easement reserved in IC 1660 which is fifty (50) feet wide and proceeds from trail easement EIN 4 C3, C4, D1, D9 in Section 15, T. 10 S., R. 71 W., Seward Meridian southeasterly to site easement EIN 6 C4, D9. Approximately one half mile of this easement has yet to be reserved.

Trail easement EIN 15a C4, D1 has yet to be reserved as well. It proceeds from site easement EIN 15 C4, D1 in Section 23, T. 10 S., R. 71 W., Seward Meridian southwesterly to BLM Managed lands. The easement crosses Section 26, of T. 10 S., R. 71 W., Seward Meridian which was originally selected by Goodnews Bay or Mumtrak Village. That selection however is no long a priority selection nor is the section on the State's priority conveyance list. Therefore, the section will likely remain in the Federal Public Domain and the trail will be at least a mile to a mile and a quarter shorter than originally proposed. Section 23, T. 10 S., R. 71 W., Seward Meridian, the beginning of the trail and the location of its attendant site easement, is a priority selection by Calista Corporation and will likely leave the Federal Public Domain.

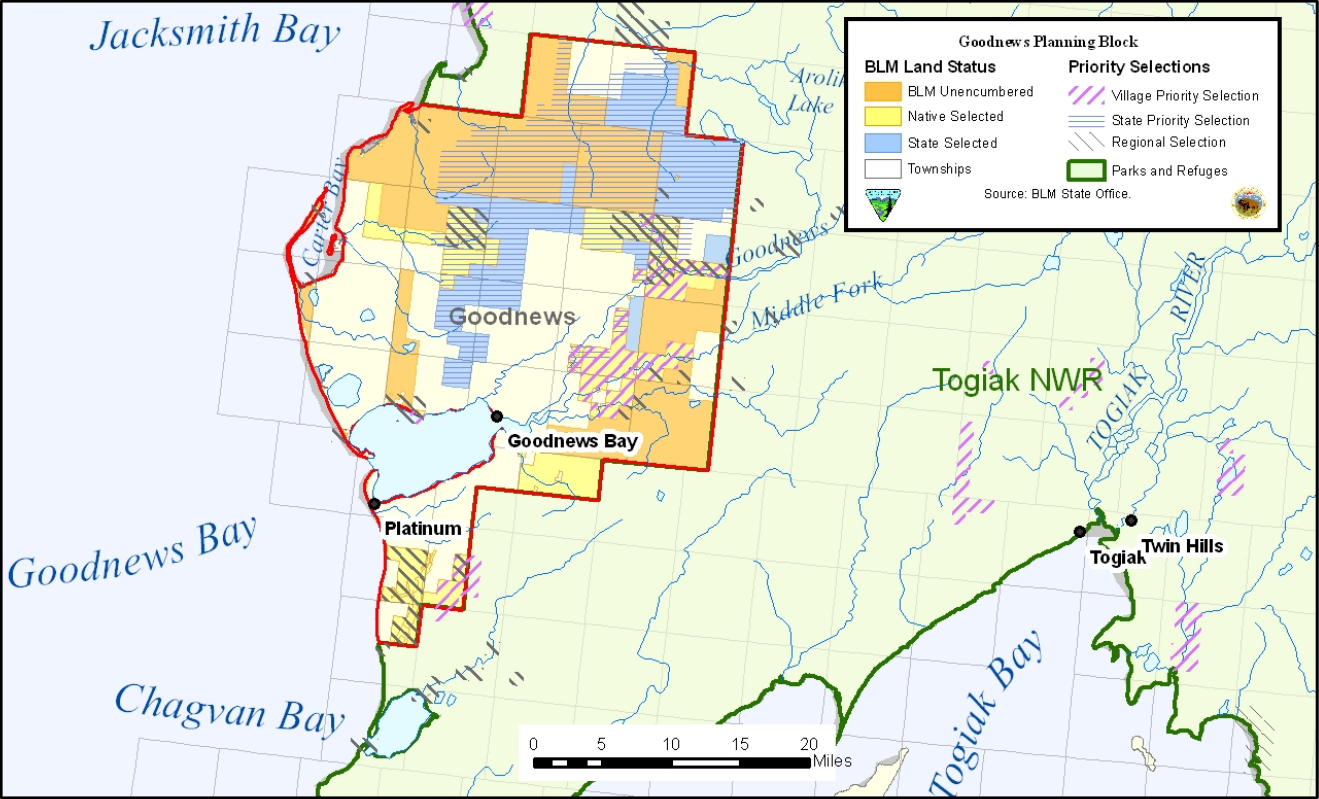


Figure 3.48

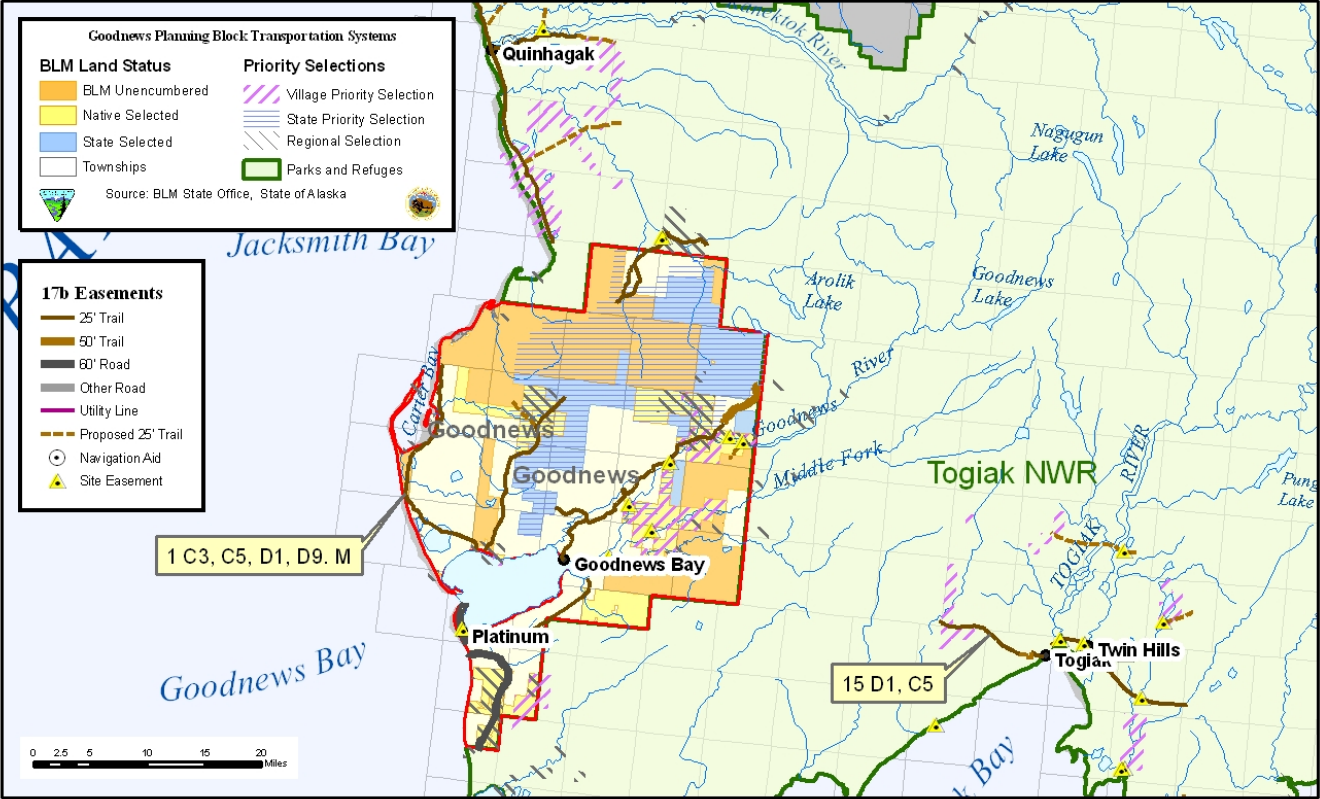


Figure 3.50

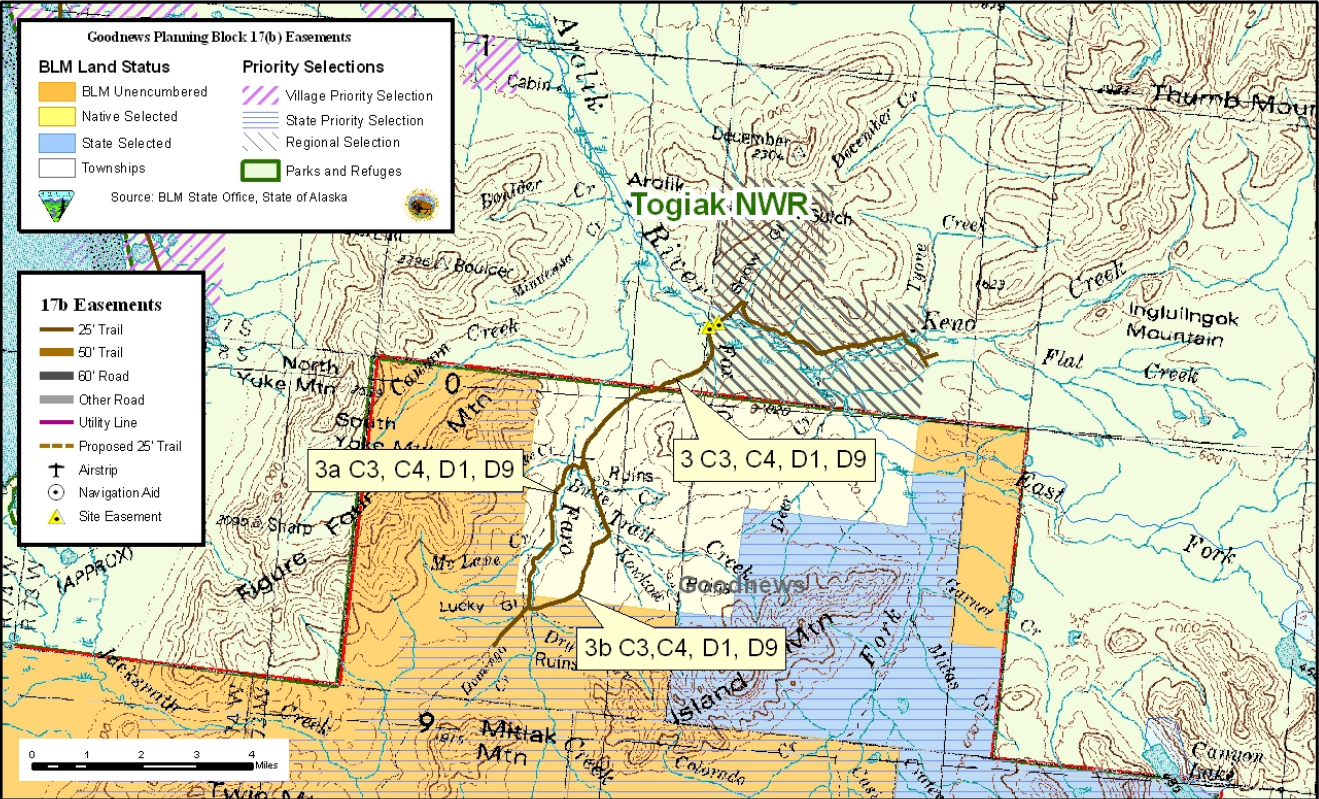


Figure 3.51

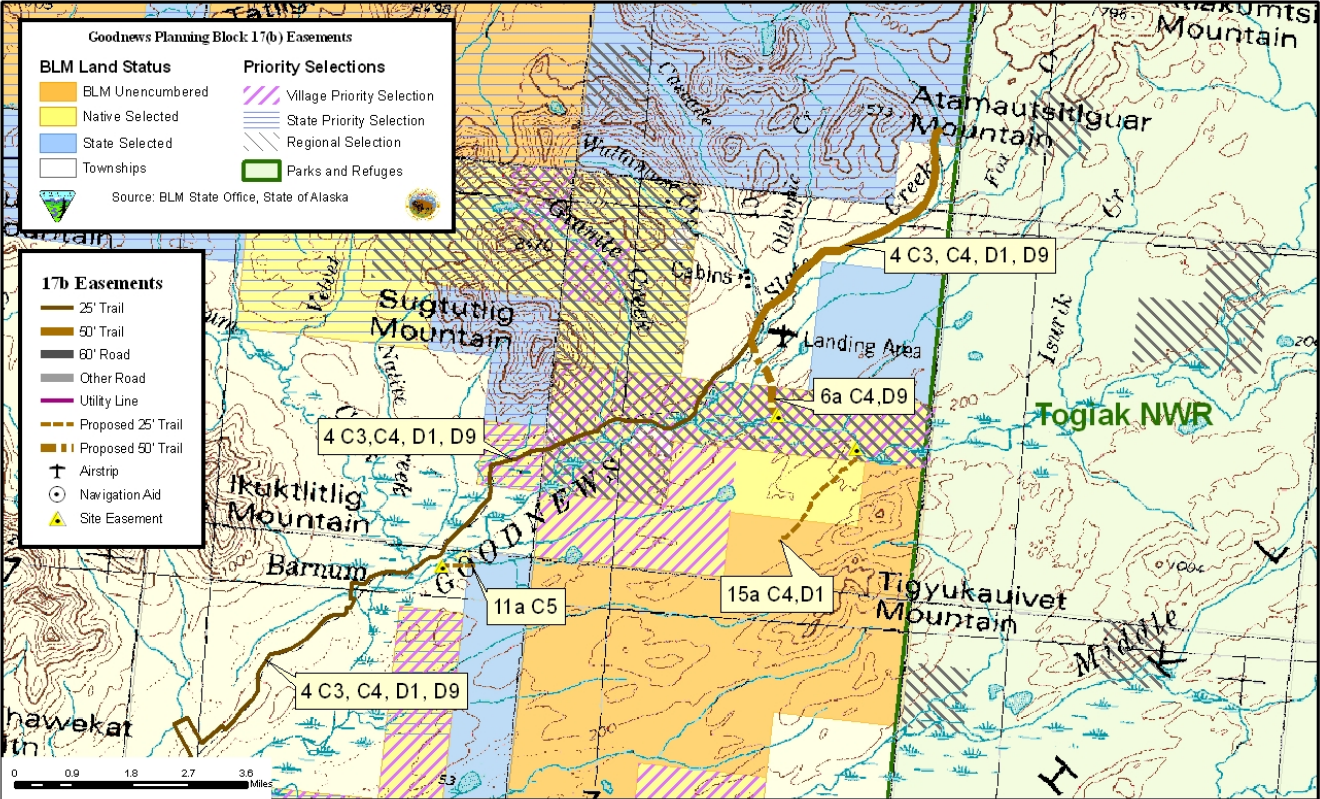


Figure 3.52

Figure 3.50 depicts one of the two trails mentioned at the beginning of this discussion. It is part of a trail that goes from Goodnews Bay to Bethel. It is a winter trail, but more importantly it is part of an inter-community trail system that ought to be preserved. Here, EIN 1 C3, C5, D1, D9, M was reserved in Patent 50-95-0632, dated September 27, 1995. The subsurface estate is owned by Kuitsarak, Inc. The trail is twenty-five (25) feet wide and its use is limited to winter transportation.

Figure 3.51 depicts systems out of the Village of Goodnews Bay through Native-conveyed lands to two areas of State Conveyed lands. The northeastern portion of the system was discussed under Figure 3.50 above. The main trail discussed under Figure 3.52 and described as EIN 4 C3, C4, D1, D9 was again reserved under Patent 50-95-0632, dated September 27, 1995. The trail is twenty-five (25) feet wide and its use is limited to winter. Those portions of land it crosses which remain in the Federal Public Domain are priority selections Goodnews Bay and Mumtrak Village.

EIN 11 C5 is a site easement on the left bank of the Goodnews River in Section 2, T. 11 S., R. 72 W., Seward Meridian. Its purpose is to accommodate a change in mode of transportation from water to ground. Its purpose is related to EIN 11a C5, a proposed trail easement that provides for access to a block of land locked State Land, Sections 1, 12, 13 and 24 in T. 11 S., R. 72 W., Seward Meridian. Both easements were reserved in Patent 50-95-0632, dated September 27, 1995. Both easements are lands owned by Kuitsarak, Inc.

EIN 12 C5 intersects EIN 4 C3, C4, D1, D9 in Section 3 of T. 12 S., R. 73 W., Seward Meridian. It provides access to a large block of State owned land to the west. It was reserved in Patent 50-95-0632, dated September 27, 1995.

There is one new trail to this discussion in Figure 3.51: EIN 3 C3, C4, D1, D9. EIN 3 C3, C4, D1, D9 is reserved in Patent 50-95-0632, dated September 27, 1995. It is an existing trail and it is twenty-five (25) feet wide. While it appears to begin on BLM managed lands in Section 20, T. 12 S., R. 74 W., Seward Meridian, the lands are priority selections by Calista Corporation. The trail proceeds north from Section 20, T. 12 S., R. 74 W., Seward Meridian to public lands in Section 2, T. 11 S., R. 74 W., Seward Meridian. The trail is designed to proceed further if the lands to the north of Section 2, T. 11 S., R. 74 W., Seward Meridian are conveyed to the Native community. Calista Corporation has a priority selection on Sections 13, 22, 23, and 24 of T. 10 S., R. 74 W., Seward Meridian. The State claims a priority selection on Sections 26 and 35 of T. 10 S., R. 74 W., Seward Meridian and Section 3 of T. 11 S., R. 74 W., Seward Meridian. The northern portion of the trail system will therefore fall on both State and Native owned lands. The left or western portion of the branch in the trail system is demarcated as EIN 16 C4, D1 and has yet to be reserved in any conveyance.

Figure 3.52 depicts the last of the ANCSA 17(b) easements in the Goodnews Planning Block. EIN 3 D1, D9 and EIN 6 C3, D1 were both reserved in Patent 50-95-0437, dated August 15, 1995. EIN 6 C3, D1 is a sixty (60) foot wide road easement. It goes from the South Spit at Platinum and the Platinum Airstrip south to the Goodnews Mining Camp. EIN 3 D1, D9 is an existing trail easement from Platinum to Goodnews Bay.

Withdrawals. There are no withdrawals within the planning block.

Recreation and Public Purposes Act Sites. There are no Recreation and Public Purposes Act Sites within the planning block.

Land Tenure Adjustment. Section 18, T. 9 S., R. 72 W., appears to be unencumbered BLM lands that does not have a state selection or a Native selection within the section. The area encompasses 605 acres and because it would be isolated public land at the completion of the conveyance process, it would be suitable for land tenure adjustment, such as a land exchange or sale.

Subsurface Estate. The Federal government has no subsurface estate interests within the Goodnews planning block (Figure 3.42).

This page intentionally left blank.

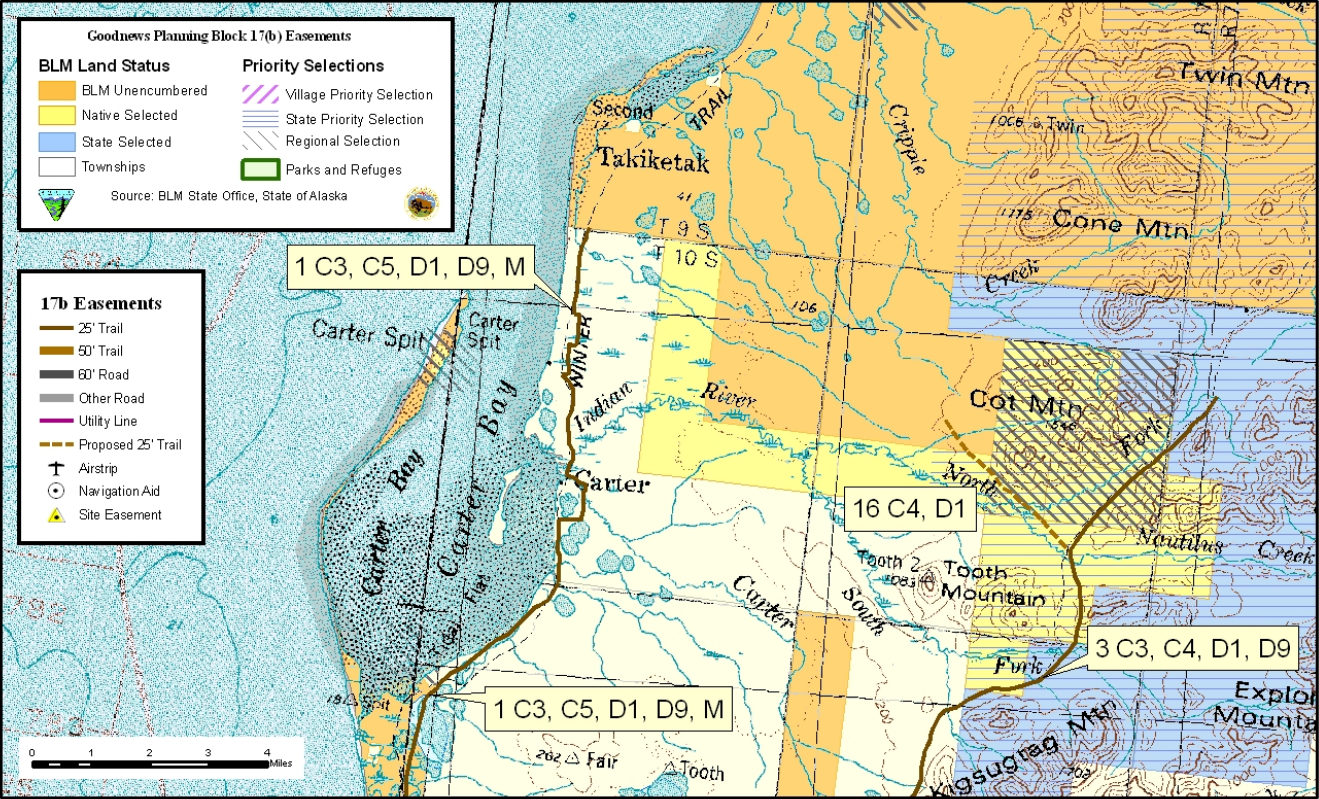


Figure 3.53

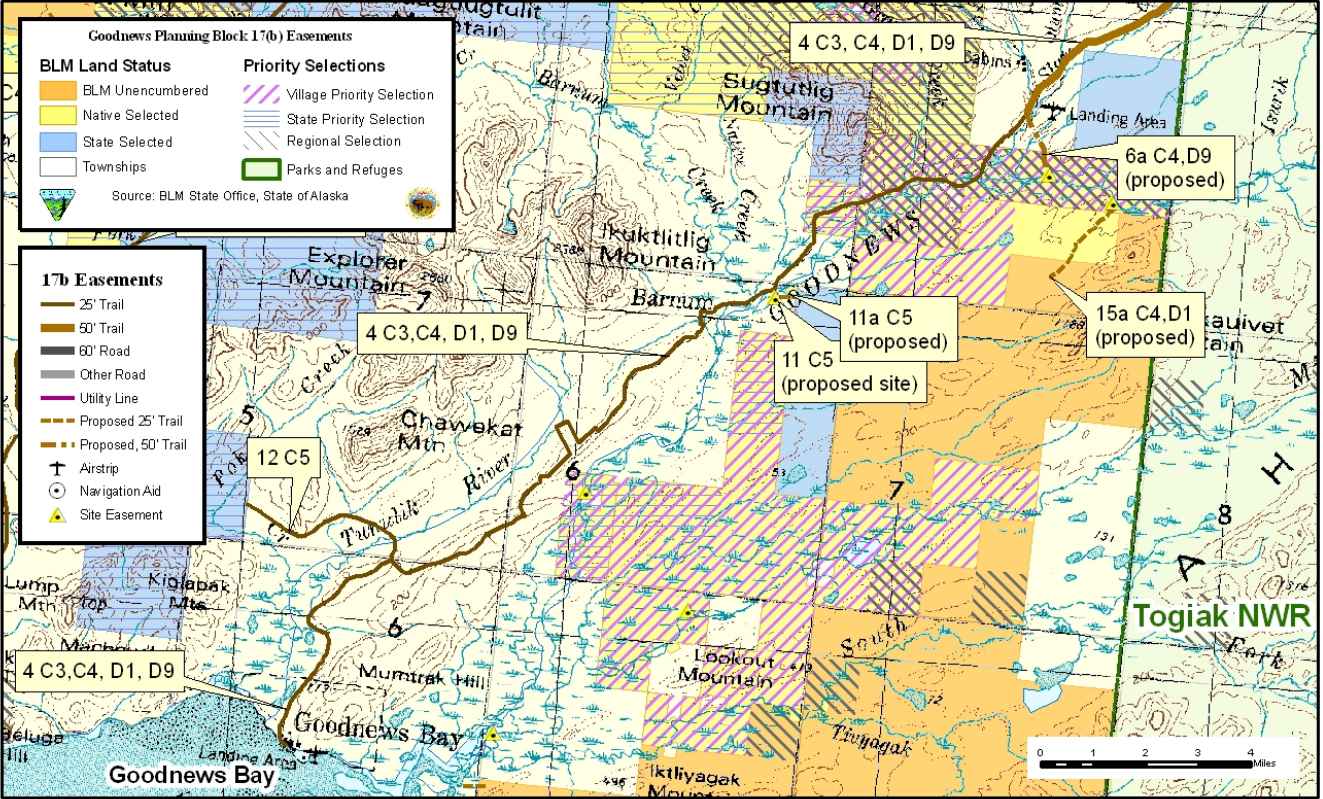


Figure 3.54

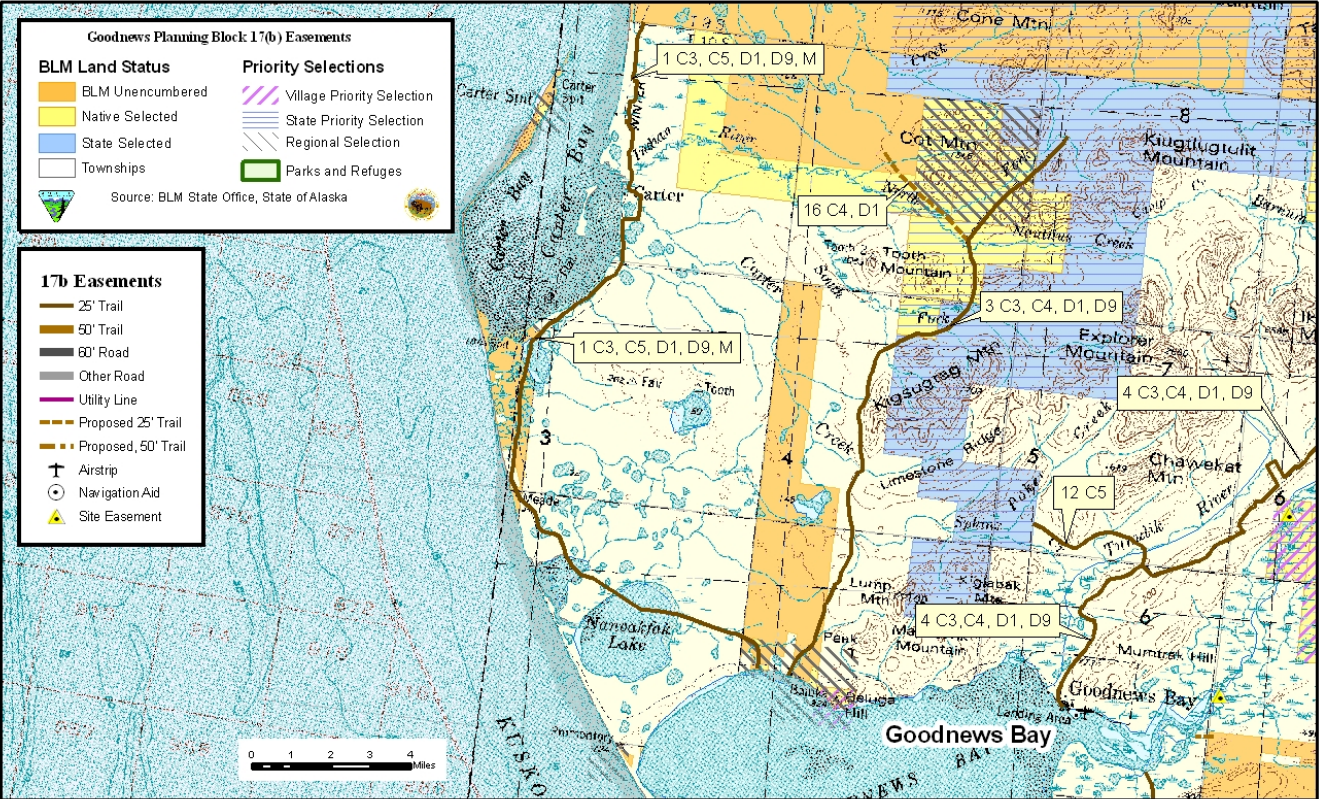


Figure 3.55

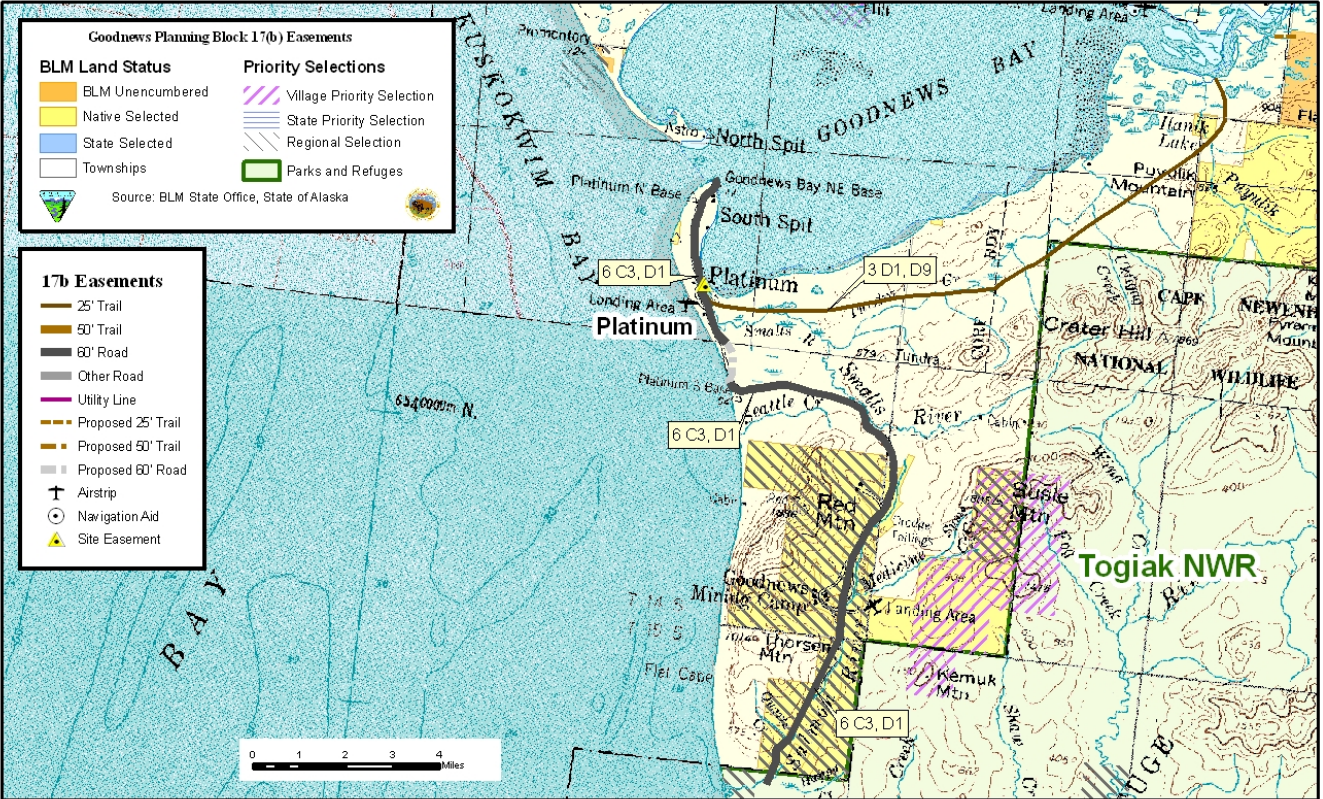


Figure 3.56