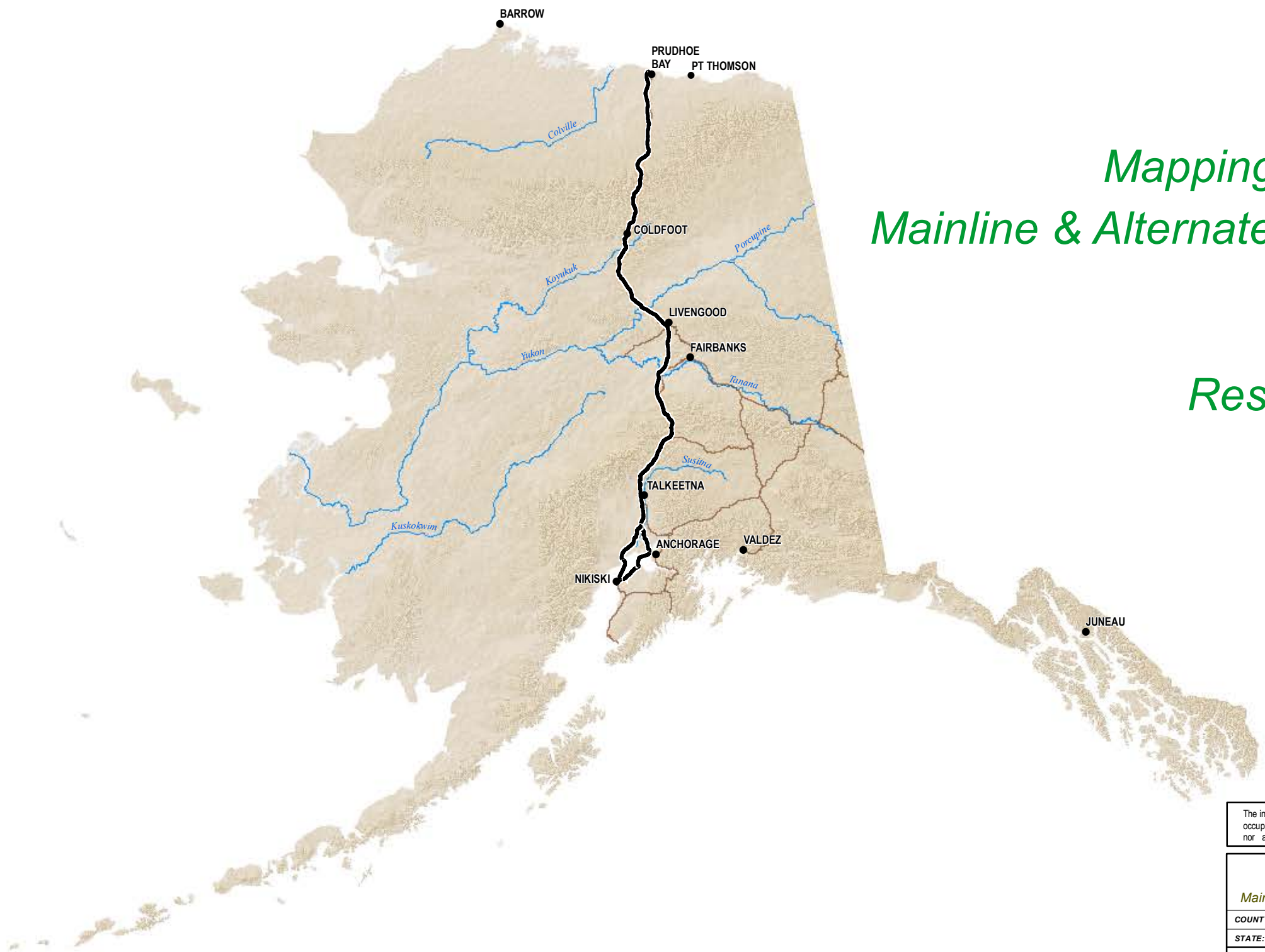


# Alaska LNG Project

Mapping Depicting Land Ownership  
Mainline & Alternate Corridor (Kenai Peninsula)

Resource Report 8, Appendix A



The information contained herein is for informational or planning purposes only. It does not nor should it be deemed to be an offer, request or proposals for rights or occupation of any kind. The Alaska LNG Project Participants and their respective officers, employees and agents, make no warranty, implied or otherwise, nor accept any liability, as to the accuracy or completeness of the information contained in these documents, drawings or electronic files.

ALASKA LNG PROJECT		
Mapping Depicting Land Ownership - Mainline & Alternate Corridor (Kenai Peninsula)		
COUNTY:	-	DRAWN BY: CC
STATE:	ALASKA	CHECKED BY: JS
REV. NO.:	REVISION	DATE
0	ISSUED FOR REVIEW	2015-02-06
PRELIMINARY		
1:10,000,000	0 100 200 Miles	
DATE:	2015-02-06	PROJECTION: NAD83 STATEPLANE AK 4 5004 FEET

PREPARED BY:

**exp** Energy Services Inc.

t: +1.907.868.1185 | f: 1.907.868.1846  
3800 Centerpoint Dr. Suite 200  
Anchorage, AK 99503  
U.S.A.

[www.exp.com](http://www.exp.com)

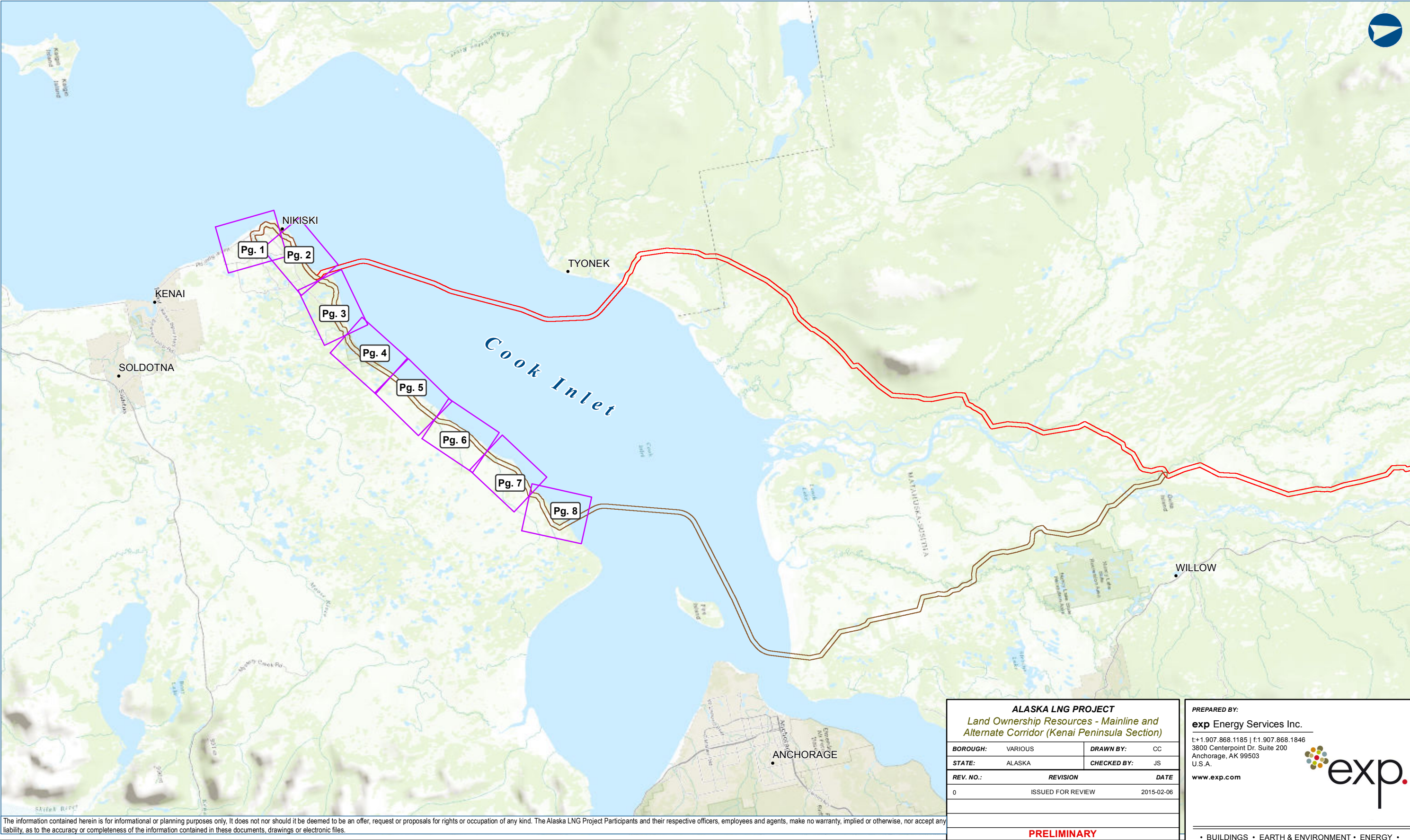


• BUILDINGS • EARTH & ENVIRONMENT • ENERGY •  
• INDUSTRIAL • INFRASTRUCTURE • SUSTAINABILITY •

DWG: COVER-A-MASTER-PRE-FEED

SHEET: COVER SHEET





The information contained herein is for informational or planning purposes only. It does not nor should it be deemed to be an offer, request or proposals for rights or occupation of any kind. The Alaska LNG Project Participants and their respective officers, employees and agents, make no warranty, implied or otherwise, nor accept any liability, as to the accuracy or completeness of the information contained in these documents, drawings or electronic files.

ALASKA LNG PROJECT

Land Ownership Resources - Mainline and Alternate Corridor (Kenai Peninsula Section)

BOROUGH:	VARIOUS	DRAWN BY:	CC
STATE:	ALASKA	CHECKED BY:	JS
REV. NO.:	REVISION	DATE	
0	ISSUED FOR REVIEW	2015-02-06	

1:500,000

0510 Miles


DATE: 2015-02-06

PROJECTION: NAD83 STATE PLANE AK 4 5004 FEET

PREPARED BY:

exp Energy Services Inc.

t: +1.907.868.1185 | f: 1.907.868.1846  
3800 Centerpoint Dr. Suite 200  
Anchorage, AK 99503  
U.S.A.  
[www.exp.com](http://www.exp.com)



• BUILDINGS • EARTH & ENVIRONMENT • ENERGY •

• INDUSTRIAL • INFRASTRUCTURE • SUSTAINABILITY •

DWG: PRE\_FEED\_REVA-INDEX

SHEET: ALT-INDEX-5

\\ptalpzn2011\TLH\_Geomatics\Projects\ExxonMobil\SCLNG\Mapping\20150130\_ResourceReport\_Final\FercFiling\04\_MXD\Index\Pre\_FEED\_ReVA\_Index\_PrelimKENAI\_Corridor\_Master.mxd

The information contained herein is for informational or planning purposed only, It does not nor should it be deemed to be an offer, request or proposals for rights or occupation of any kind. The Alaska LNG Project Participants and their respective officers, employees and agents, make no warranty, implied or otherwise, nor accept any liability, as to the accuracy or completeness of the information contained in these documents, drawings or electronic files.

PREPARED BY:

exp Energy Services Inc.

t: +1.907.868.1185 | f: 1.907.868.1846  
3800 Centerpoint Dr. Suite 200  
Anchorage, AK 99503  
U.S.A.

www.exp.com

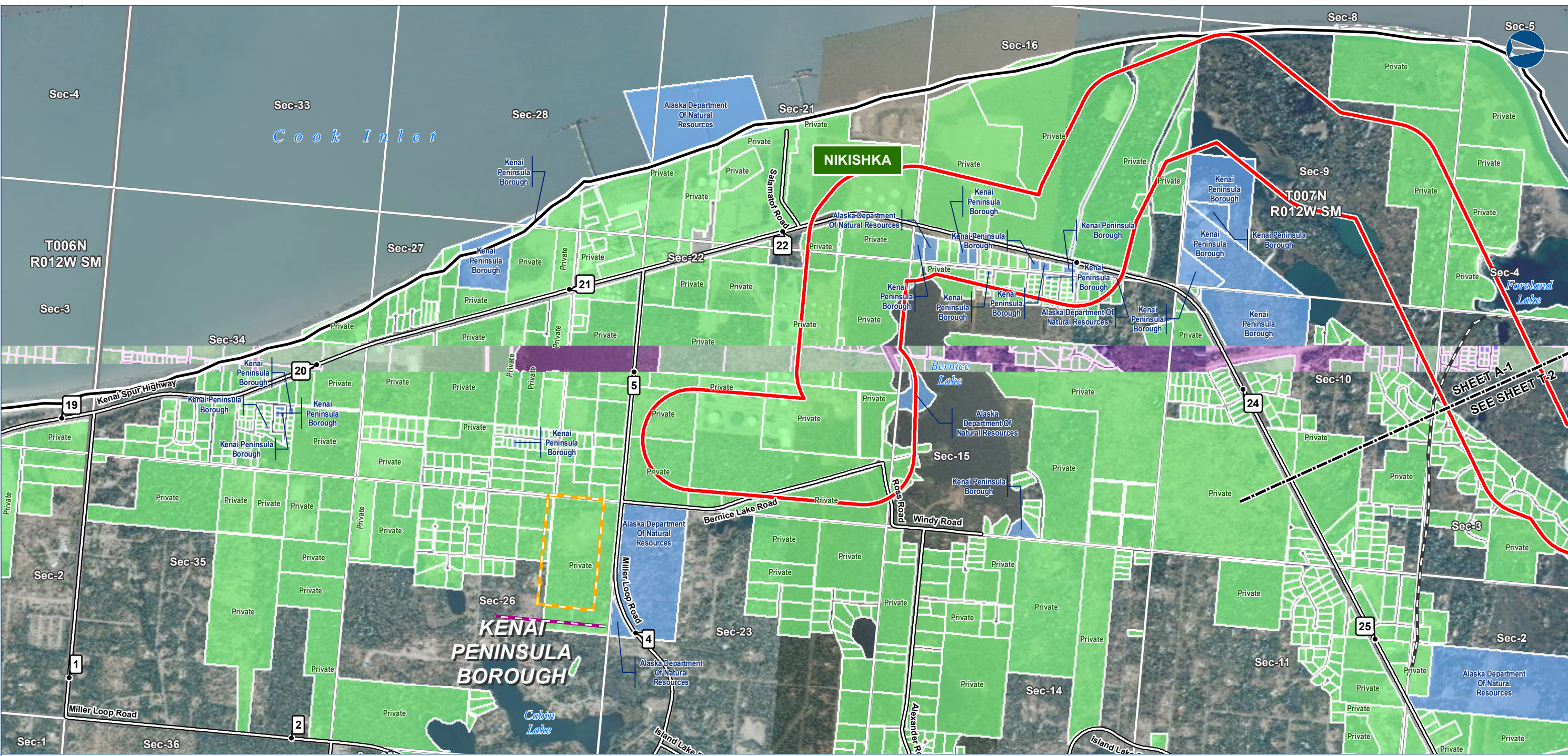


- BUILDINGS • EARTH & ENVIRONMENT • ENERGY •
- INDUSTRIAL • INFRASTRUCTURE • SUSTAINABILITY •









The information contained herein is for informational or planning purposes only. It does not nor should it be deemed to be an offer, request or proposals for rights or occupation of any kind. The Alaska LNG Project Participants and their respective officers, employees and agents, make no warranty, implied or otherwise, nor accept any liability, as to the accuracy or completeness of the information contained in these documents, drawings or electronic files.



**LEGEND**

**Study Corridor - 2,000 ft wide (+/-)**

- Pre-FEED Rev A Base Corridor
- Pre-FEED Rev A Alternate Corridor

**17b Easement**

- Pipeline, Oil / Gas
- Road - Existing
- Trail - Existing
- Trail - Proposed

**Managing Authority**

- Federal Ownership
- State Ownership
- Municipal Ownership
- Private Ownership
- RS2477 Trail

- Primary Road
- Secondary Road
- Borough \ Census Area Boundary
- Township
- Section

ALASKA LNG PROJECT		
Land Ownership - Mainline and Alternate Corridor (Kenai Peninsula Section)		
BOROUGH:	KENAI PENINSULA	DRAWN BY: CC
STATE:	ALASKA	CHECKED BY: JS
REV. NO.:	REVISION	DATE
0	ISSUED FOR REVIEW	2015-02-07
PRELIMINARY		
1:24,000	0 1/4 1/2 Miles	
DATE: 2015-02-07	PROJECTION: NAD83 STATEPLANE AK 4 5004 FEET	

PREPARED BY:

**exp** Energy Services Inc.

t: +1.907.868.1185 | f: +1.907.868.1846  
3800 Centerpoint Dr. Suite 200  
Anchorage, AK 99503  
U.S.A.  
[www.exp.com](http://www.exp.com)

• BUILDINGS • EARTH & ENVIRONMENT • ENERGY •  
• INDUSTRIAL • INFRASTRUCTURE • SUSTAINABILITY •

DWG: LANDOWNER-A-KENAI\_BASE-PRE-FEED SHEET: A-1



LAND OWNERSHIP - MAINLINE AND ALTERNATE CORRIDOR (KENAI PENINSULA SECTION)



The information contained herein is for informational or planning purposes only. It does not nor should it be deemed to be an offer, request or proposals for rights or occupation of any kind. The Alaska LNG Project Participants and their respective officers, employees and agents, make no warranty, implied or otherwise, nor accept any liability, as to the accuracy or completeness of the information contained in these documents, drawings or electronic files.



Alaska LNG Project

**LEGEND**

**Study Corridor - 2,000 ft wide (+/-)**

- Pre-Feed Rev A Base Corridor
- Pre-Feed Rev A Alternate Corridor

**Easement**

- Pipeline, Oil / Gas
- Road - Existing
- Trail - Existing
- Trail - Proposed

**Managing Authority**

- Federal Ownership
- State Ownership
- Municipal Ownership
- Private Ownership
- RS2477 Trail

**Primary Road**

**Secondary Road**

**Borough \ Census Area Boundary**

**Township**

**Section**

**ALASKA LNG PROJECT**

*Land Ownership - Mainline and Alternate Corridor (Kenai Peninsula Section)*

<b>BOROUGH:</b> KENAI PENINSULA	<b>DRAWN BY:</b> CC
<b>STATE:</b> ALASKA	<b>CHECKED BY:</b> JS
<b>REV. NO.:</b> 0	<b>REVISION:</b> ISSUED FOR REVIEW
<b>DATE:</b> 2015-02-07	

**PRELIMINARY**

1:24,000

0 1/4 1/2 Miles

**DATE:** 2015-02-07 **PROJECTION:** NAD83 STATEPLANE AK 4 5004 FEET

**PREPARED BY:**

**exp** Energy Services Inc.

t:1.907.868.1185 | f:1.907.868.1846  
3800 Centerpoint Dr. Suite 200  
Anchorage, AK 99503  
U.S.A.

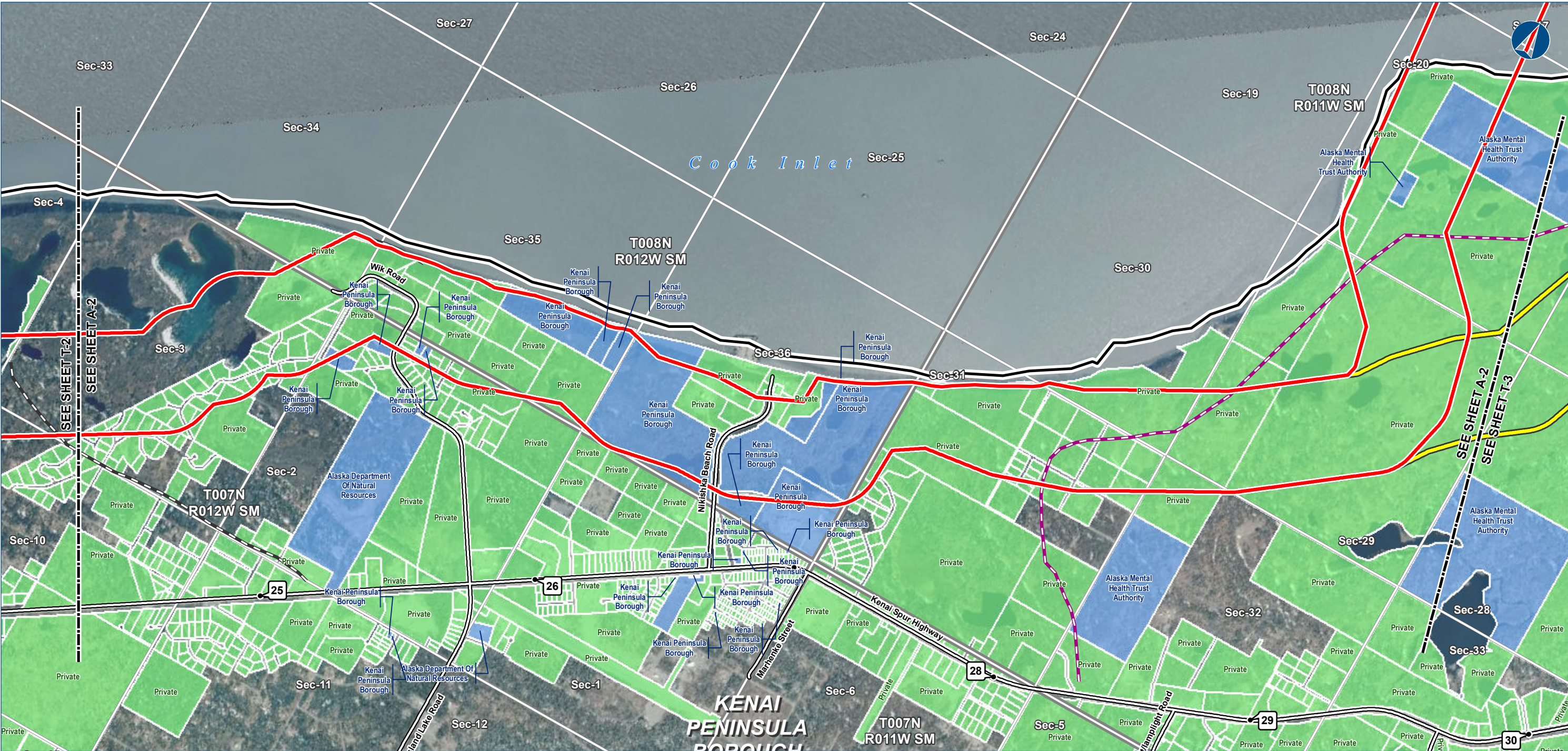
[www.exp.com](http://www.exp.com)

**BUILDINGS • EARTH & ENVIRONMENT • ENERGY •  
INDUSTRIAL • INFRASTRUCTURE • SUSTAINABILITY •**

**DWG:** LANDOWNER-T-KENAI\_BASE-PRE-FEED **SHEET:** T-2



LAND OWNERSHIP - MAINLINE AND ALTERNATE CORRIDOR (KENAI PENINSULA SECTION)



The information contained herein is for informational or planning purposes only. It does not nor should it be deemed to be an offer, request or proposals for rights or occupation of any kind. The Alaska LNG Project Participants and their respective officers, employees and agents, make no warranty, implied or otherwise, nor accept any liability, as to the accuracy or completeness of the information contained in these documents, drawings or electronic files.



Alaska LNG Project

**LEGEND**

**Study Corridor - 2,000 ft wide (+/-)**

- Pre-FEED Rev A Base Corridor
- Pre-FEED Rev A Alternate Corridor

**17b Easement**

- Pipeline, Oil / Gas
- Road - Existing
- Trail - Existing
- Trail - Proposed

**Managing Authority**

- Federal Ownership
- State Ownership
- Municipal Ownership
- Private Ownership
- RS2477 Trail

- Primary Road
- Secondary Road
- Borough \ Census Area Boundary
- Township
- Section

**ALASKA LNG PROJECT**

*Land Ownership - Mainline and Alternate Corridor (Kenai Peninsula Section)*

<b>BOROUGH:</b> KENAI PENINSULA	<b>DRAWN BY:</b> CC
<b>STATE:</b> ALASKA	<b>CHECKED BY:</b> JS
<b>REV. NO.:</b> 0	<b>REVISION:</b> ISSUED FOR REVIEW
<b>DATE:</b> 2015-02-07	

**PRELIMINARY**

1:24,000

0 1/4 1/2 Miles

**DATE:** 2015-02-07 **PROJECTION:** NAD83 STATEPLANE AK 4 5004 FEET

**PREPARED BY:**

**exp** Energy Services Inc.

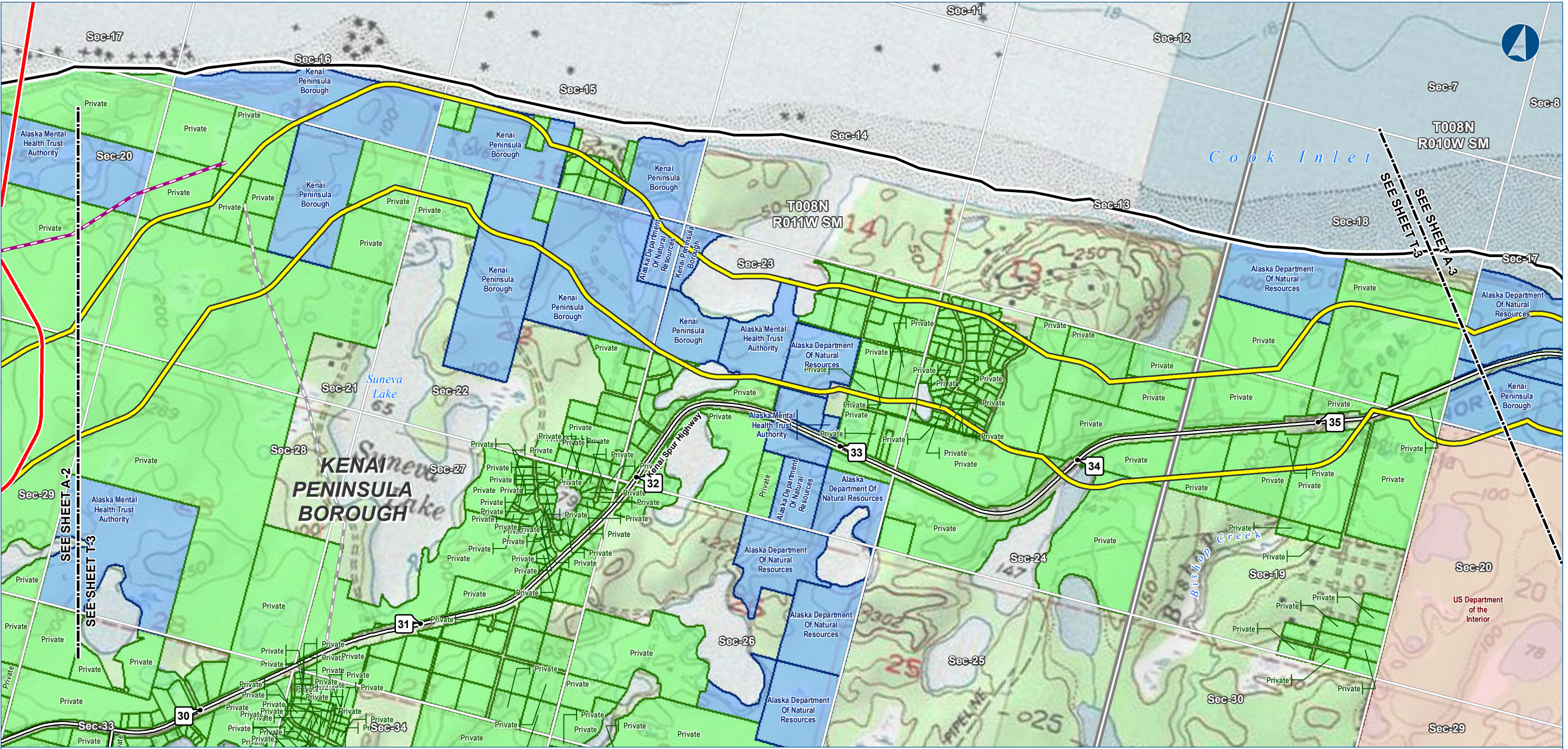
t: +1.907.868.1185 | f: +1.907.868.1846  
3800 Centerpoint Dr. Suite 200  
Anchorage, AK 99503  
U.S.A.  
[www.exp.com](http://www.exp.com)

**BUILDINGS • EARTH & ENVIRONMENT • ENERGY •  
INDUSTRIAL • INFRASTRUCTURE • SUSTAINABILITY •**

**DWG:** LANDOWNER-A-KENAI\_BASE-PRE-FEED **SHEET:** A-2



LAND OWNERSHIP - MAINLINE AND ALTERNATE CORRIDOR (KENAI PENINSULA SECTION)



The information contained herein is for informational or planning purposes only. It does not nor should it be deemed to be an offer, request or proposals for rights or occupation of any kind. The Alaska LNG Project Participants and their respective officers, employees and agents, make no warranty, implied or otherwise, nor accept any liability, as to the accuracy or completeness of the information contained in these documents, drawings or electronic files.



LEGEND

Study Corridor - 2,000 ft wide (+/-)

- Pre-FEED Rev A Base Corridor
- Pre-FEED Rev A Alternate Corridor

Easement

- Pipeline, Oil / Gas
- Road - Existing
- Trail - Existing
- Trail - Proposed

Managing Authority

- Federal Ownership
- State Ownership
- Municipal Ownership
- Private Ownership
- RS2477 Trail

- Primary Road
- Secondary Road
- Borough \ Census Area Boundary
- Township
- Section

ALASKA LNG PROJECT  
Land Ownership - Mainline and Alternate Corridor  
(Kenai Peninsula Section)

BOROUGH:	KENAI PENINSULA	DRAWN BY:	CC
STATE:	ALASKA	CHECKED BY:	JS
REV. NO.:	0	REVISION	ISSUED FOR REVIEW
DATE:	2015-02-07	DATE	2015-02-07

PRELIMINARY			
1:24,000	0	1/4	1/2 Miles

DATE: 2015-02-07 PROJECTION: NAD83 STATEPLANE AK 4 5004 FEET

PREPARED BY:

exp Energy Services Inc.

t: +1.907.868.1185 | f: +1.907.868.1846  
3800 Centerpoint Dr. Suite 200  
Anchorage, AK 99503  
U.S.A.

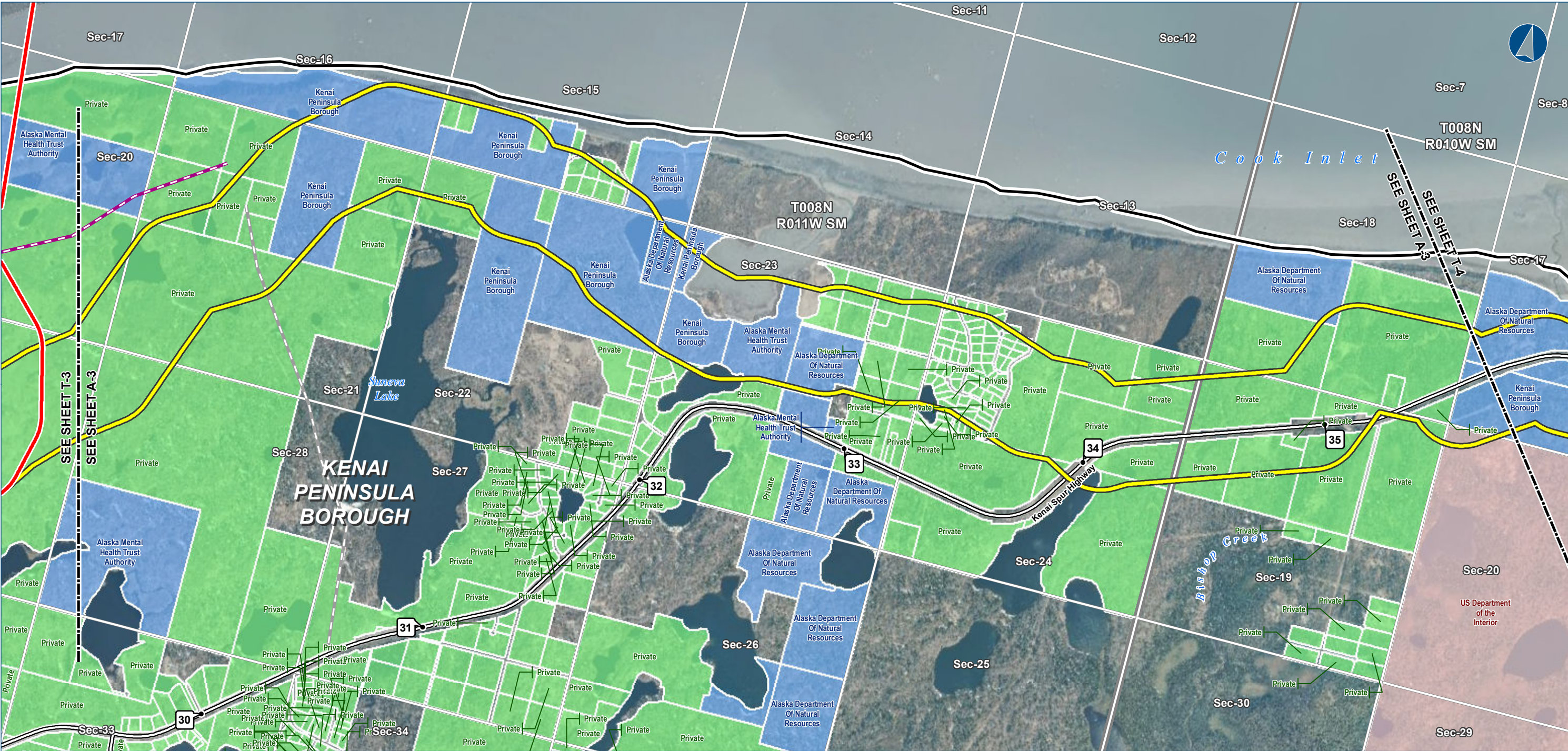
www.exp.com



• BUILDINGS • EARTH & ENVIRONMENT • ENERGY •  
• INDUSTRIAL • INFRASTRUCTURE • SUSTAINABILITY •

DWG: LANDOWNER-T-KENAI\_BASE-PRE-FEED SHEET: T-3





The information contained herein is for informational or planning purposes only. It does not nor should it be deemed to be an offer, request or proposals for rights or occupation of any kind. The Alaska LNG Project Participants and their respective officers, employees and agents, make no warranty, implied or otherwise, nor accept any liability, as to the accuracy or completeness of the information contained in these documents, drawings or electronic files.



**LEGEND**

**Study Corridor - 2,000 ft wide (+/-)**

- Pre-FEED Rev A Base Corridor
- Pre-FEED Rev A Alternate Corridor

**17b Easement**

- Pipeline, Oil / Gas
- Road - Existing
- Trail - Existing
- Trail - Proposed

**Managing Authority**

- Federal Ownership
- State Ownership
- Municipal Ownership
- Private Ownership
- RS2477 Trail

- Primary Road
- Secondary Road
- Borough \ Census Area Boundary
- Township
- Section

ALASKA LNG PROJECT		
Land Ownership - Mainline and Alternate Corridor (Kenai Peninsula Section)		
BOROUGH:	KENAI PENINSULA	DRAWN BY: CC
STATE:	ALASKA	CHECKED BY: JS
REV. NO.:	REVISION	DATE
0	ISSUED FOR REVIEW	2015-02-07
PRELIMINARY		
1:24,000	0 1/4 1/2 Miles	
DATE: 2015-02-07	PROJECTION: NAD83 STATEPLANE AK 4 5004 FEET	

PREPARED BY:

exp Energy Services Inc.

t: +1.907.868.1185 | f: 1.907.868.1846

3800 Centerpoint Dr. Suite 200

Anchorage, AK 99503

U.S.A.

www.exp.com

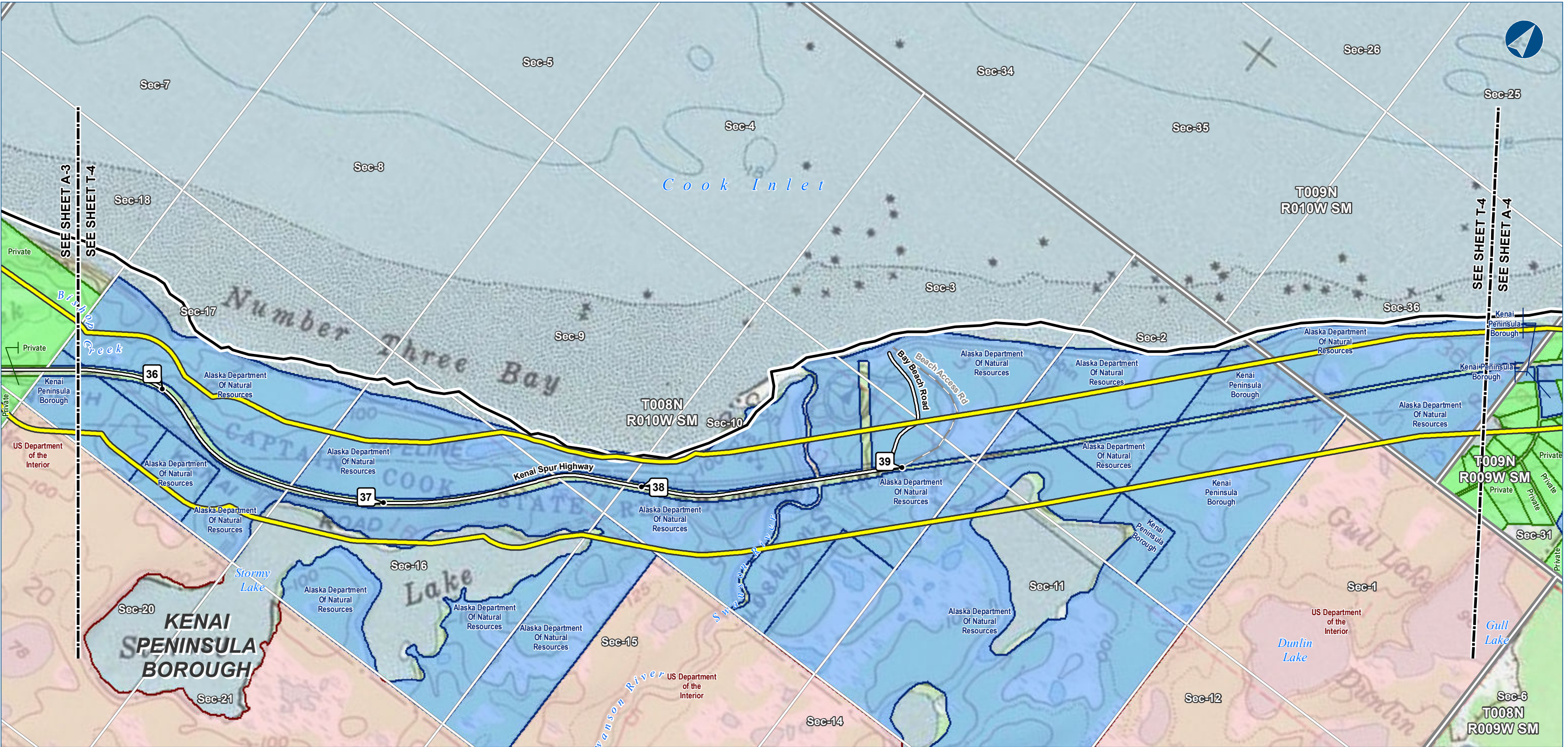
• BUILDINGS • EARTH & ENVIRONMENT • ENERGY •

• INDUSTRIAL • INFRASTRUCTURE • SUSTAINABILITY •

DWG: LANDOWNER-A-KENAI\_BASE-PRE-FEED SHEET: A-3



LAND OWNERSHIP - MAINLINE AND ALTERNATE CORRIDOR (KENAI PENINSULA SECTION)



The information contained herein is for informational or planning purposes only. It does not nor should it be deemed to be an offer, request or proposals for rights or occupation of any kind. The Alaska LNG Project Participants and their respective officers, employees and agents, make no warranty, implied or otherwise, nor accept any liability, as to the accuracy or completeness of the information contained in these documents, drawings or electronic files.



Alaska LNG Project

**LEGEND**

**Study Corridor - 2,000 ft wide (+/-)**

- Pre-FEED Rev A Base Corridor
- Pre-FEED Rev A Alternate Corridor

**Easement**

- Pipeline, Oil / Gas
- Road - Existing
- Trail - Existing
- Trail - Proposed

**Managing Authority**

- Federal Ownership
- State Ownership
- Municipal Ownership
- Private Ownership
- RS2477 Trail

**Primary Road**

**Secondary Road**

**Borough \ Census Area Boundary**

**Township**

**Section**

ALASKA LNG PROJECT		
Land Ownership - Mainline and Alternate Corridor (Kenai Peninsula Section)		
BOROUGH:	KENAI PENINSULA	DRAWN BY: CC
STATE:	ALASKA	CHECKED BY: JS
REV. NO.:	REVISION	DATE
0	ISSUED FOR REVIEW	2015-02-07
PRELIMINARY		
1:24,000	0 1/4 1/2 Miles	
DATE: 2015-02-07	PROJECTION: NAD83 STATEPLANE AK 4 5004 FEET	

PREPARED BY:

exp Energy Services Inc.

t: +1.907.868.1185 | f: +1.907.868.1846

3800 Centerpoint Dr. Suite 200

Anchorage, AK 99503

U.S.A.

www.exp.com

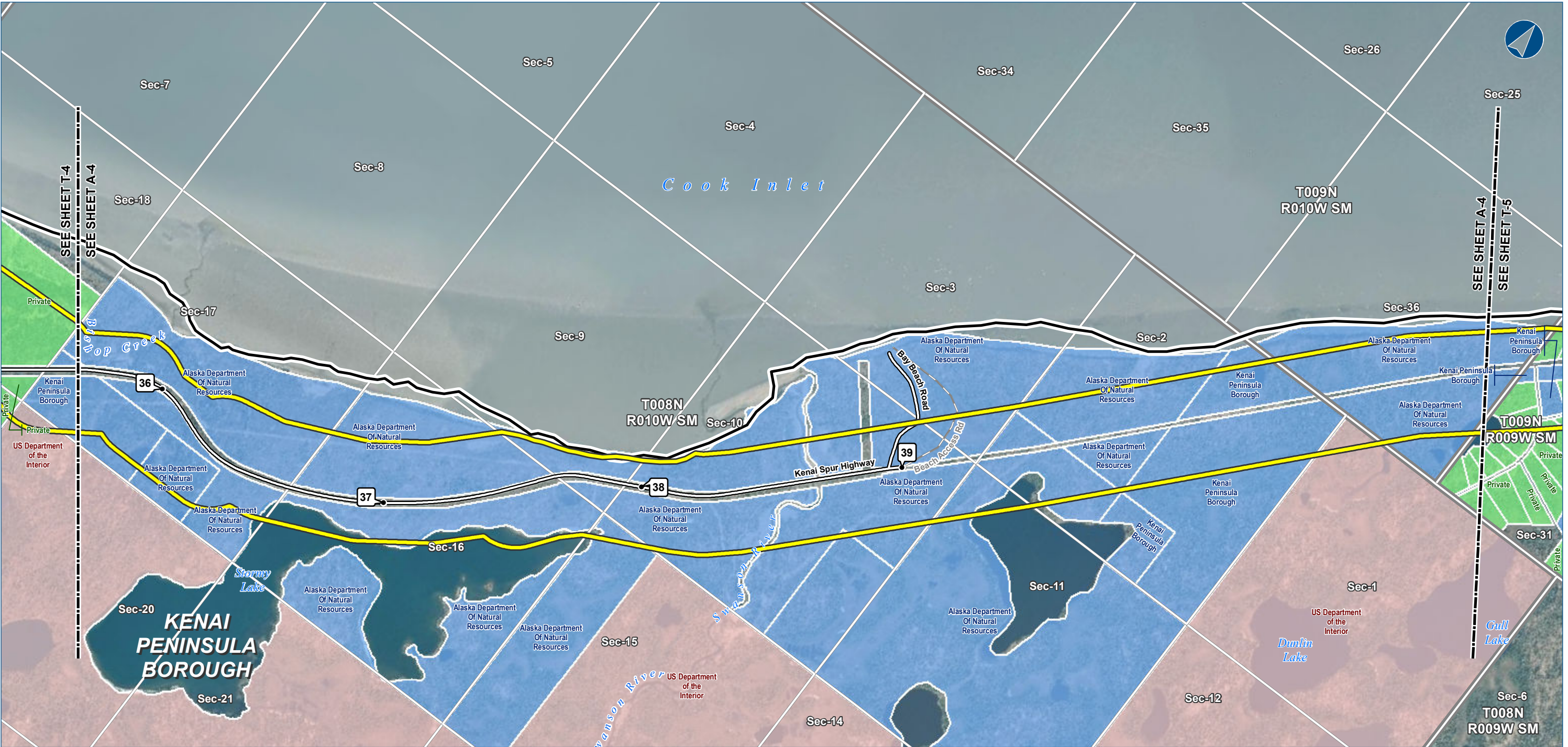
• BUILDINGS • EARTH & ENVIRONMENT • ENERGY •

• INDUSTRIAL • INFRASTRUCTURE • SUSTAINABILITY •

DWG: LANDOWNER-T-KENAI\_BASE-PRE-FEED

SHEET: T-4





The information contained herein is for informational or planning purposes only. It does not nor should it be deemed to be an offer, request or proposals for rights or occupation of any kind. The Alaska LNG Project Participants and their respective officers, employees and agents, make no warranty, implied or otherwise, nor accept any liability, as to the accuracy or completeness of the information contained in these documents, drawings or electronic files.



Alaska LNG Project

**LEGEND**

Study Corridor - 2,000 ft wide (+/-)

- Pre-FEED Rev A Base Corridor
- Pre-FEED Rev A Alternate Corridor

17b Easement

- Pipeline, Oil / Gas
- Road - Existing
- Trail - Existing
- Trail - Proposed

Managing Authority

- Federal Ownership
- State Ownership
- Municipal Ownership
- Private Ownership
- RS2477 Trail

- Primary Road
- Secondary Road
- Borough \ Census Area Boundary
- Township
- Section

ALASKA LNG PROJECT		
Land Ownership - Mainline and Alternate Corridor (Kenai Peninsula Section)		
BOROUGH:	KENAI PENINSULA	DRAWN BY: CC
STATE:	ALASKA	CHECKED BY: JS
REV. NO.:	REVISION	DATE
0	ISSUED FOR REVIEW	2015-02-07
PRELIMINARY		
1:24,000	0 1/4 1/2 Miles	
DATE: 2015-02-07	PROJECTION: NAD83 STATEPLANE AK 4 5004 FEET	

PREPARED BY:

exp Energy Services Inc.

t: +1.907.868.1185 | f: +1.907.868.1846

3800 Centerpoint Dr. Suite 200

Anchorage, AK 99503

U.S.A.

www.exp.com

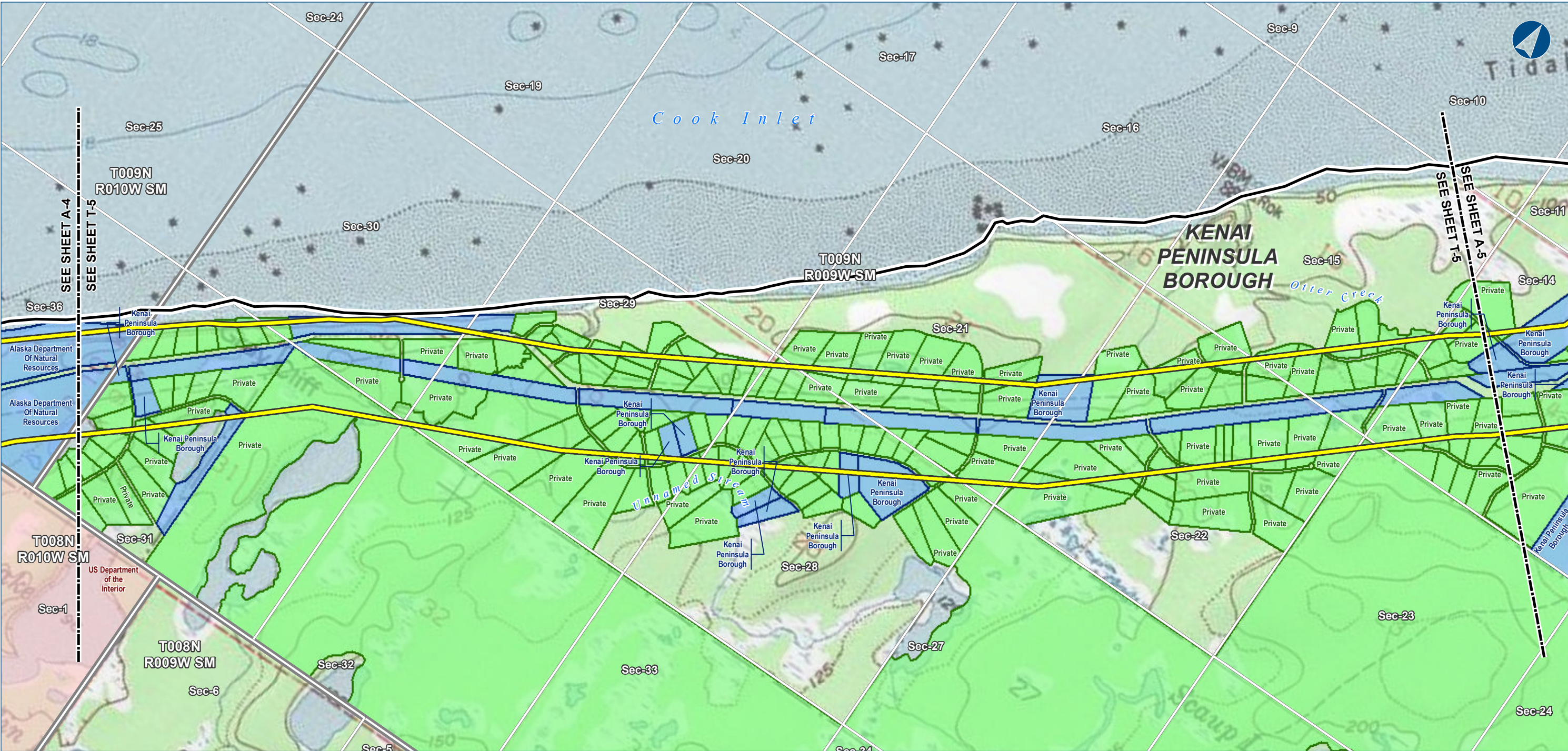
• BUILDINGS • EARTH & ENVIRONMENT • ENERGY •

• INDUSTRIAL • INFRASTRUCTURE • SUSTAINABILITY •

DWG: LANDOWNER-A-KENAI\_BASE-PRE-FEED

SHEET: A-4





The information contained herein is for informational or planning purposes only. It does not nor should it be deemed to be an offer, request or proposals for rights or occupation of any kind. The Alaska LNG Project Participants and their respective officers, employees and agents, make no warranty, implied or otherwise, nor accept any liability, as to the accuracy or completeness of the information contained in these documents, drawings or electronic files.



Alaska LNG Project

**LEGEND**

**Study Corridor - 2,000 ft wide (+/-)**

- Pre-FEED Rev A Base Corridor
- Pre-FEED Rev A Alternate Corridor

**Easement**

- Pipeline, Oil / Gas
- Road - Existing
- Trail - Existing
- Trail - Proposed

**Managing Authority**

- Federal Ownership
- State Ownership
- Municipal Ownership
- Private Ownership
- RS2477 Trail

**Primary Road**

**Secondary Road**

**Borough \ Census Area Boundary**

**Township**

**Section**

**ALASKA LNG PROJECT**

*Land Ownership - Mainline and Alternate Corridor (Kenai Peninsula Section)*

<b>BOROUGH:</b> KENAI PENINSULA	<b>DRAWN BY:</b> CC
<b>STATE:</b> ALASKA	<b>CHECKED BY:</b> JS
<b>REV. NO.:</b> 0	<b>REVISION:</b> ISSUED FOR REVIEW
<b>DATE:</b> 2015-02-07	

**PRELIMINARY**

1:24,000

0 1/4 1/2 Miles

**DATE:** 2015-02-07 **PROJECTION:** NAD83 STATEPLANE AK 4 5004 FEET

**PREPARED BY:**

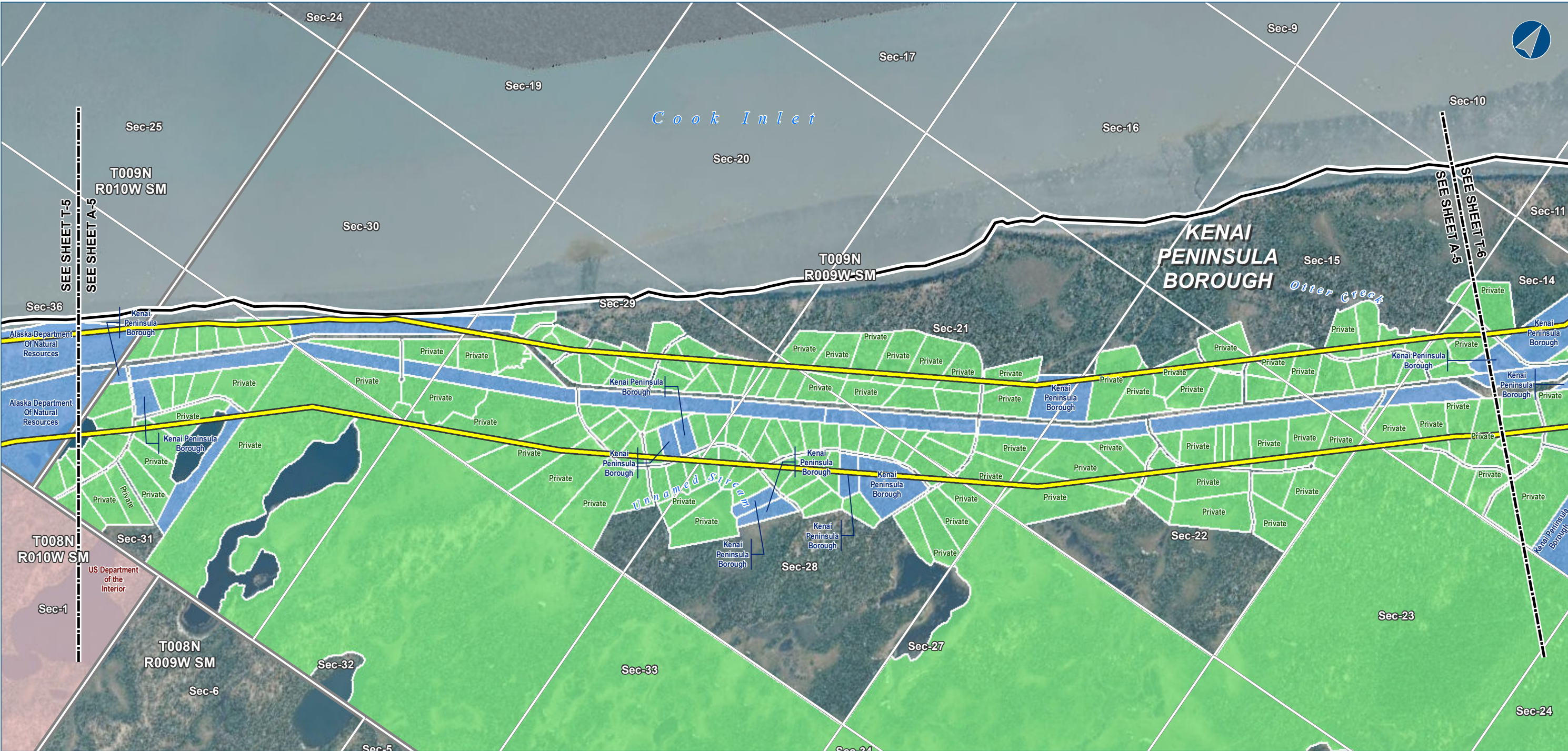
**exp** Energy Services Inc.

t: +1.907.868.1185 | f: 1.907.868.1846  
3800 Centerpoint Dr. Suite 200  
Anchorage, AK 99503  
U.S.A.  
[www.exp.com](http://www.exp.com)

**BUILDINGS • EARTH & ENVIRONMENT • ENERGY •  
INDUSTRIAL • INFRASTRUCTURE • SUSTAINABILITY •**

**DWG:** LANDOWNER-T-KENAI\_BASE-PRE-FEED **SHEET:** T-5





The information contained herein is for informational or planning purposes only. It does not nor should it be deemed to be an offer, request or proposals for rights or occupation of any kind. The Alaska LNG Project Participants and their respective officers, employees and agents, make no warranty, implied or otherwise, nor accept any liability, as to the accuracy or completeness of the information contained in these documents, drawings or electronic files.



Alaska LNG Project

**LEGEND**

**Study Corridor - 2,000 ft wide (+/-)**

- Pre-FEED Rev A Base Corridor
- Pre-FEED Rev A Alternate Corridor

**17b Easement**

- Pipeline, Oil / Gas
- Road - Existing
- Trail - Existing
- Trail - Proposed

**Managing Authority**

- Federal Ownership
- State Ownership
- Municipal Ownership
- Private Ownership
- RS2477 Trail

- Primary Road
- Secondary Road
- Borough \ Census Area Boundary
- Township
- Section

ALASKA LNG PROJECT		
Land Ownership - Mainline and Alternate Corridor (Kenai Peninsula Section)		
BOROUGH:	KENAI PENINSULA	DRAWN BY: CC
STATE:	ALASKA	CHECKED BY: JS
REV. NO.:	REVISION	DATE
0	ISSUED FOR REVIEW	2015-02-07
PRELIMINARY		
1:24,000	0 1/4 1/2 Miles	
DATE: 2015-02-07	PROJECTION: NAD83 STATEPLANE AK 4 5004 FEET	

PREPARED BY:

exp Energy Services Inc.

t: +1.907.868.1185 | f: +1.907.868.1846

3800 Centerpoint Dr. Suite 200

Anchorage, AK 99503

U.S.A.

www.exp.com

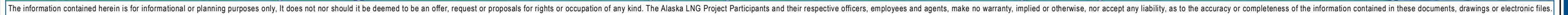
• BUILDINGS • EARTH & ENVIRONMENT • ENERGY •

• INDUSTRIAL • INFRASTRUCTURE • SUSTAINABILITY •

DWG: LANDOWNER-A-KENAI\_BASE-PRE-FEED

SHEET: A-5





<h1 style="text-align: center;">ALASKA LNG PROJECT</h1> <h2 style="text-align: center;">Land Ownership - Mainline and Alternate Corridor (Kenai Peninsula Section)</h2>		
<b>BOROUGH:</b>	KENAI PENINSULA	<b>DRAWN BY:</b> CC
<b>STATE:</b>	ALASKA	<b>CHECKED BY:</b> JS
<b>REV. NO.:</b>	<b>REVISION</b>	<b>DATE</b>
0	ISSUED FOR REVIEW	2015-02-07
<b>PRELIMINARY</b>		
1:24,000		
<b>DATE:</b> 2015-02-07	<b>PROJECTION:</b> NAD83 STATEPLANE AK 4 5004 FEET	

**PREPARED BY:**  
**exp** Energy Services Inc.  
 t:+1.907.868.1185 | f:1.907.868.1846  
 3800 Centerpoint Dr. Suite 200  
 Anchorage, AK 99503  
 U.S.A.  
 www.exp.com



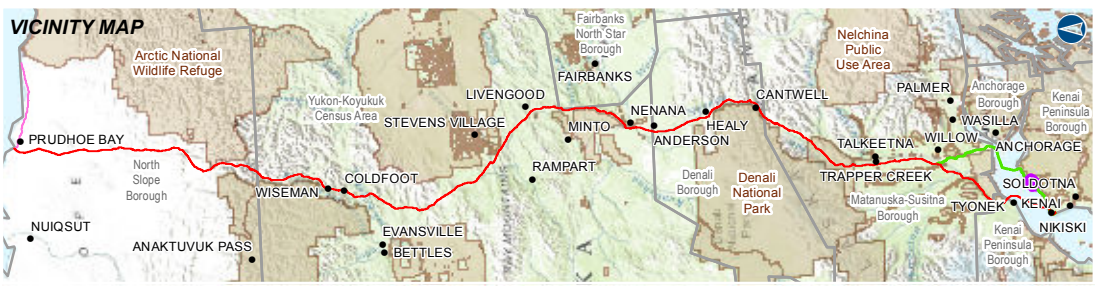
• BUILDINGS • EARTH & ENVIRONMENT • ENERGY •  
 • INDUSTRIAL • INFRASTRUCTURE • SUSTAINABILITY •

**DWG:** LANDOWNER-T-KENAI BASE-PRE-FEED **SHEET:** T-6





The information contained herein is for informational or planning purposes only. It does not nor should it be deemed to be an offer, request or proposals for rights or occupation of any kind. The Alaska LNG Project Participants and their respective officers, employees and agents, make no warranty, implied or otherwise, nor accept any liability, as to the accuracy or completeness of the information contained in these documents, drawings or electronic files.



**LEGEND**

**Study Corridor - 2,000 ft wide (+/-)**

- Pre-FEED Rev A Base Corridor
- Pre-FEED Rev A Alternate Corridor

**17b Easement**

- Pipeline, Oil / Gas
- Road - Existing
- Trail - Existing
- Trail - Proposed

**Managing Authority**

- Federal Ownership
- State Ownership
- Municipal Ownership
- Private Ownership
- RS2477 Trail

- Primary Road
- Secondary Road
- Borough \ Census Area Boundary
- Township
- Section

ALASKA LNG PROJECT		
Land Ownership - Mainline and Alternate Corridor (Kenai Peninsula Section)		
BOROUGH:	KENAI PENINSULA	DRAWN BY: CC
STATE:	ALASKA	CHECKED BY: JS
REV. NO.:	REVISION	DATE
0	ISSUED FOR REVIEW	2015-02-07
PRELIMINARY		
1:24,000	0 1/4 1/2 Miles	
DATE: 2015-02-07	PROJECTION: NAD83 STATEPLANE AK 4 5004 FEET	

PREPARED BY:

exp Energy Services Inc.

t: +1.907.868.1185 | f: +1.907.868.1846

3800 Centerpoint Dr. Suite 200

Anchorage, AK 99503

U.S.A.

www.exp.com

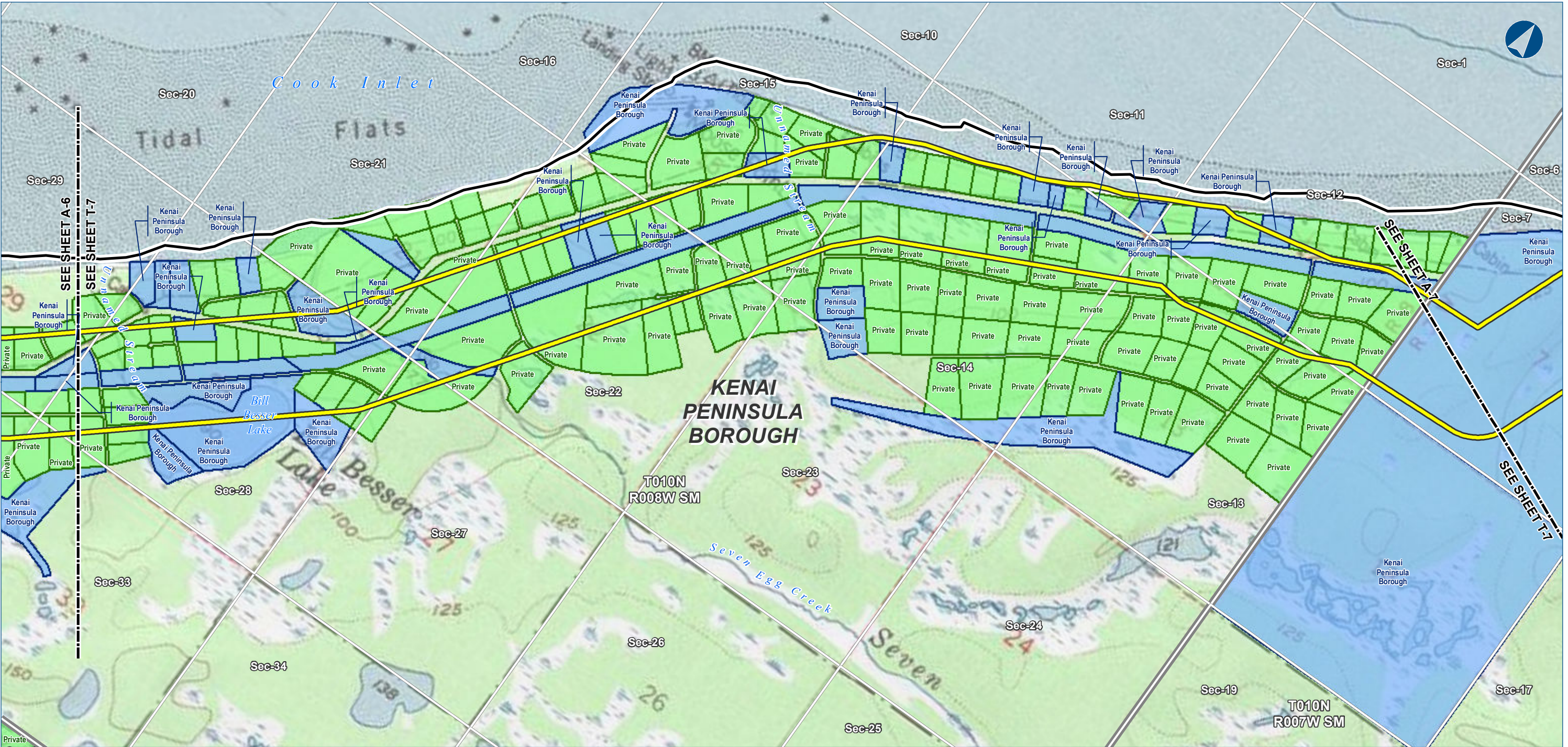
• BUILDINGS • EARTH & ENVIRONMENT • ENERGY •

• INDUSTRIAL • INFRASTRUCTURE • SUSTAINABILITY •

DWG: LANDOWNER-A-KENAI\_BASE-PRE-FEED

SHEET: A-6





The information contained herein is for informational or planning purposes only. It does not nor should it be deemed to be an offer, request or proposals for rights or occupation of any kind. The Alaska LNG Project Participants and their respective officers, employees and agents, make no warranty, implied or otherwise, nor accept any liability, as to the accuracy or completeness of the information contained in these documents, drawings or electronic files.



Alaska LNG Project

**LEGEND**  
**Study Corridor - 2,000 ft wide (+/-)**  
Pre-Feed Rev A Base Corridor  
Pre-Feed Rev A Alternate Corridor  
**Easement**  
Pipeline, Oil / Gas  
Road - Existing  
Trail - Existing  
Trail - Proposed  
**Managing Authority**  
Federal Ownership  
State Ownership  
Municipal Ownership  
Private Ownership  
RS2477 Trail  
Primary Road  
Secondary Road  
Borough \ Census Area Boundary  
Township  
Section

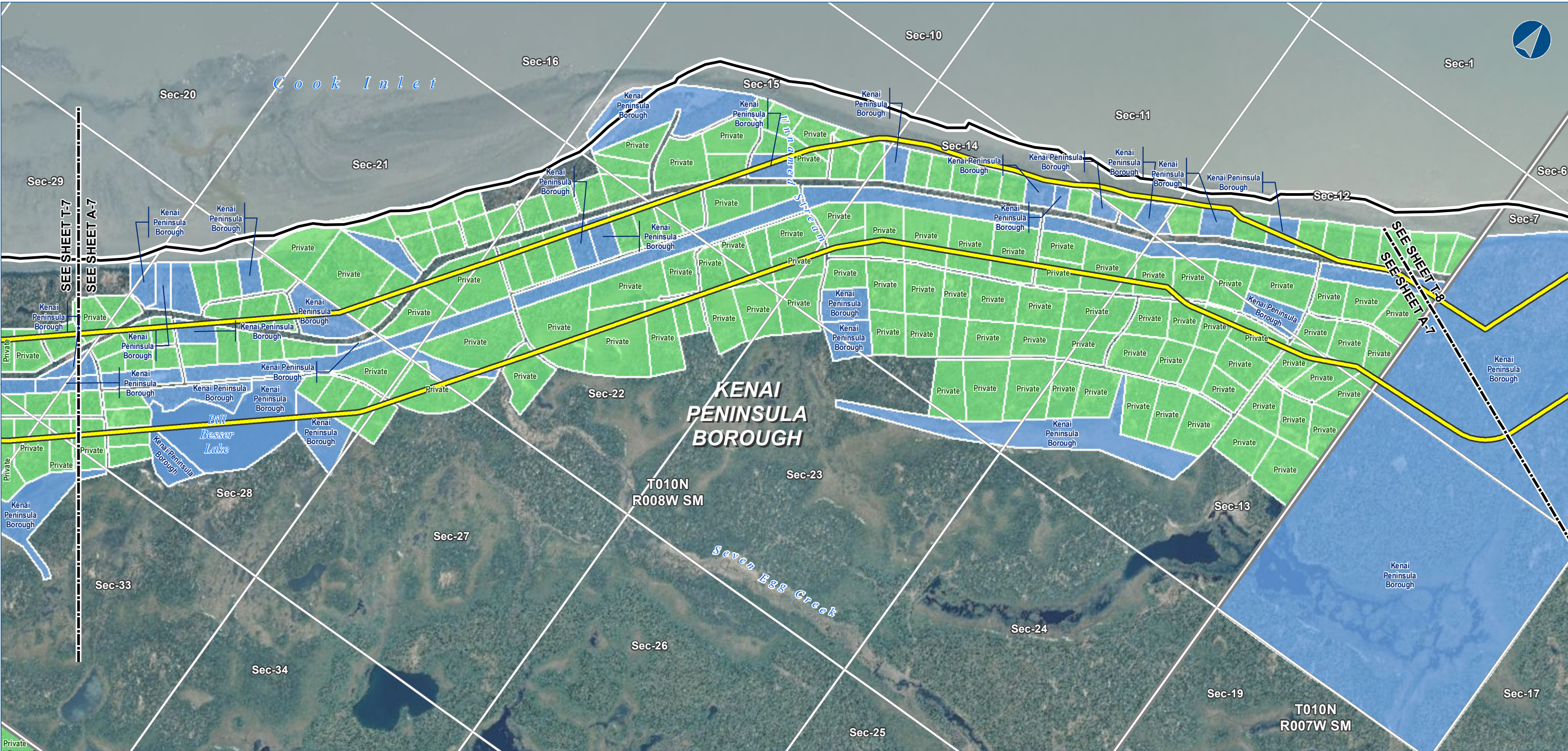
ALASKA LNG PROJECT		
Land Ownership - Mainline and Alternate Corridor (Kenai Peninsula Section)		
BOROUGH:	KENAI PENINSULA	DRAWN BY: CC
STATE:	ALASKA	CHECKED BY: JS
REV. NO.:	REVISION	DATE
0	ISSUED FOR REVIEW	2015-02-07
PRELIMINARY		
1:24,000	0 1/4 1/2 Miles	
DATE: 2015-02-07	PROJECTION: NAD83 STATEPLANE AK 4 5004 FEET	

**PREPARED BY:**  
exp Energy Services Inc.  
t: +1.907.868.1185 | f: +1.907.868.1846  
3800 Centerpoint Dr. Suite 200  
Anchorage, AK 99503  
U.S.A.  
www.exp.com

**BUILDINGS • EARTH & ENVIRONMENT • ENERGY •  
INDUSTRIAL • INFRASTRUCTURE • SUSTAINABILITY •**

DWG: LANDOWNER-T-KENAI\_BASE-PRE-FEED SHEET: T-7





The information contained herein is for informational or planning purposes only. It does not nor should it be deemed to be an offer, request or proposals for rights or occupation of any kind. The Alaska LNG Project Participants and their respective officers, employees and agents, make no warranty, implied or otherwise, nor accept any liability, as to the accuracy or completeness of the information contained in these documents, drawings or electronic files.



Alaska LNG Project

**LEGEND**

**Study Corridor - 2,000 ft wide (+/-)**

- Pre-FEED Rev A Base Corridor
- Pre-FEED Rev A Alternate Corridor

**17b Easement**

- Pipeline, Oil / Gas
- Road - Existing
- Trail - Existing
- Trail - Proposed

**Managing Authority**

- Federal Ownership
- State Ownership
- Municipal Ownership
- Private Ownership
- RS2477 Trail

- Primary Road
- Secondary Road
- Borough \ Census Area Boundary
- Township
- Section

ALASKA LNG PROJECT		
Land Ownership - Mainline and Alternate Corridor (Kenai Peninsula Section)		
BOROUGH:	KENAI PENINSULA	DRAWN BY: CC
STATE:	ALASKA	CHECKED BY: JS
REV. NO.:	REVISION	DATE
0	ISSUED FOR REVIEW	2015-02-07
PRELIMINARY		
1:24,000	0 1/4 1/2 Miles	
DATE: 2015-02-07	PROJECTION: NAD83 STATEPLANE AK 4 5004 FEET	

PREPARED BY:

exp Energy Services Inc.

t: +1.907.868.1185 | f: +1.907.868.1846

3800 Centerpoint Dr. Suite 200

Anchorage, AK 99503

U.S.A.

www.exp.com

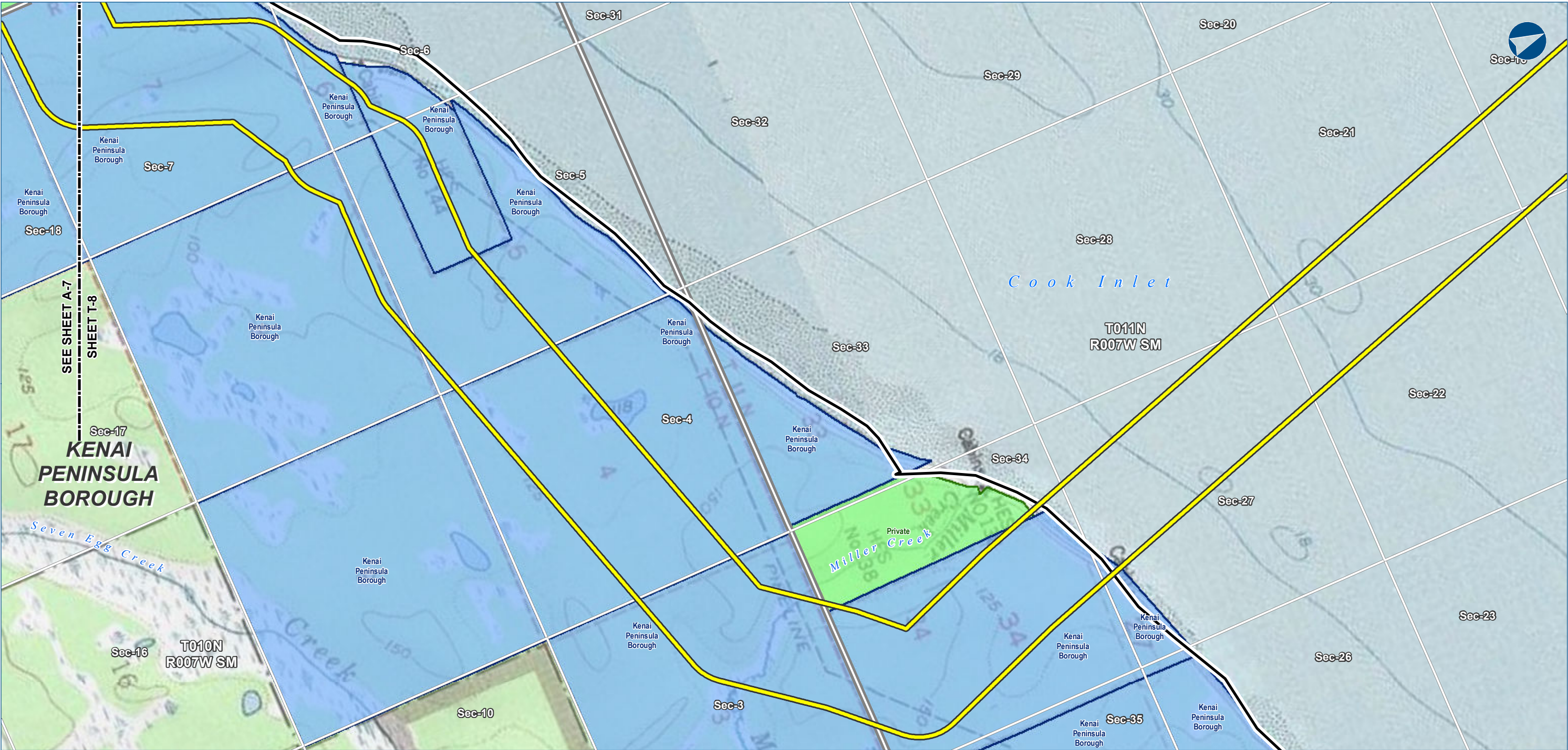
• BUILDINGS • EARTH & ENVIRONMENT • ENERGY •

• INDUSTRIAL • INFRASTRUCTURE • SUSTAINABILITY •

DWG: LANDOWNER-A-KENAI\_BASE-PRE-FEED

SHEET: A-7





The information contained herein is for informational or planning purposes only. It does not nor should it be deemed to be an offer, request or proposals for rights or occupation of any kind. The Alaska LNG Project Participants and their respective officers, employees and agents, make no warranty, implied or otherwise, nor accept any liability, as to the accuracy or completeness of the information contained in these documents, drawings or electronic files.



**LEGEND**

**Study Corridor - 2,000 ft wide (+/-)**

- Pre-FEED Rev A Base Corridor
- Pre-FEED Rev A Alternate Corridor

**Easement**

- Pipeline, Oil / Gas
- Road - Existing
- Trail - Existing
- Trail - Proposed

**Managing Authority**

- Federal Ownership
- State Ownership
- Municipal Ownership
- Private Ownership
- RS2477 Trail

- Primary Road
- Secondary Road
- Borough \ Census Area Boundary
- Township
- Section

ALASKA LNG PROJECT		
Land Ownership - Mainline and Alternate Corridor (Kenai Peninsula Section)		
BOROUGH:	KENAI PENINSULA	DRAWN BY: CC
STATE:	ALASKA	CHECKED BY: JS
REV. NO.:	REVISION	DATE
0	ISSUED FOR REVIEW	2015-02-07
PRELIMINARY		
1:24,000	0 1/4 1/2 Miles	
DATE: 2015-02-07	PROJECTION: NAD83 STATEPLANE AK 4 5004 FEET	

PREPARED BY:

exp Energy Services Inc.

t: +1.907.868.1185 | f: 1.907.868.1846

3800 Centerpoint Dr. Suite 200

Anchorage, AK 99503

U.S.A.

www.exp.com

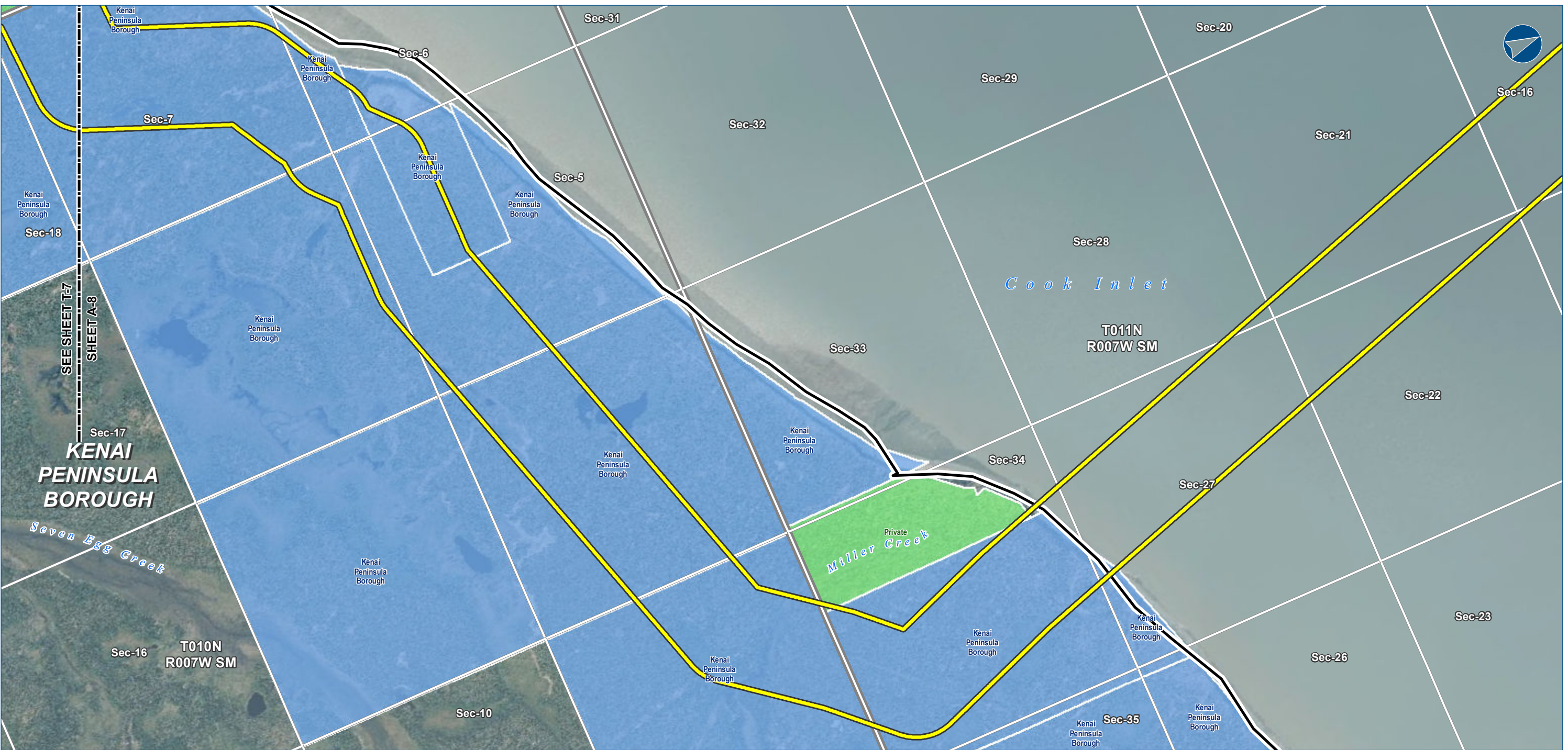
• BUILDINGS • EARTH & ENVIRONMENT • ENERGY •

• INDUSTRIAL • INFRASTRUCTURE • SUSTAINABILITY •

DWG: LANDOWNER-T-KENAI\_BASE-PRE-FEED

SHEET: T-8





The information contained herein is for informational or planning purposes only. It does not nor should it be deemed to be an offer, request or proposals for rights or occupation of any kind. The Alaska LNG Project Participants and their respective officers, employees and agents, make no warranty, implied or otherwise, nor accept any liability, as to the accuracy or completeness of the information contained in these documents, drawings or electronic files.



Alaska LNG Project

Study Corridor - 2,000 ft wide (+/-)

Pre-FEED Rev A Base Corridor

Pre-FEED Rev A Alternate Corridor

17b Easement

Pipeline, Oil / Gas

Road - Existing

Trail - Existing

Trail - Proposed

Managing Authority

Federal Ownership

State Ownership

Municipal Ownership

Private Ownership

RS2477 Trail

Primary Road

Secondary Road

Borough \ Census Area Boundary

Township

Section

ALASKA LNG PROJECT		
Land Ownership - Mainline and Alternate Corridor (Kenai Peninsula Section)		
BOROUGH:	KENAI PENINSULA	DRAWN BY: CC
STATE:	ALASKA	CHECKED BY: JS
REV. NO.:	REVISION	DATE
0	ISSUED FOR REVIEW	2015-02-07
PRELIMINARY		
1:24,000	0 1/4 1/2 Miles	
DATE: 2015-02-07	PROJECTION: NAD83 STATEPLANE AK 4 5004 FEET	

PREPARED BY:

exp Energy Services Inc.

t: +1.907.868.1185 | f: 1.907.868.1846

3800 Centerpoint Dr. Suite 200

Anchorage, AK 99503

U.S.A.

www.exp.com

• BUILDINGS • EARTH & ENVIRONMENT • ENERGY •

• INDUSTRIAL • INFRASTRUCTURE • SUSTAINABILITY •

DWG: LANDOWNER-A-KENAI\_BASE-PRE-FEED SHEET: A-8