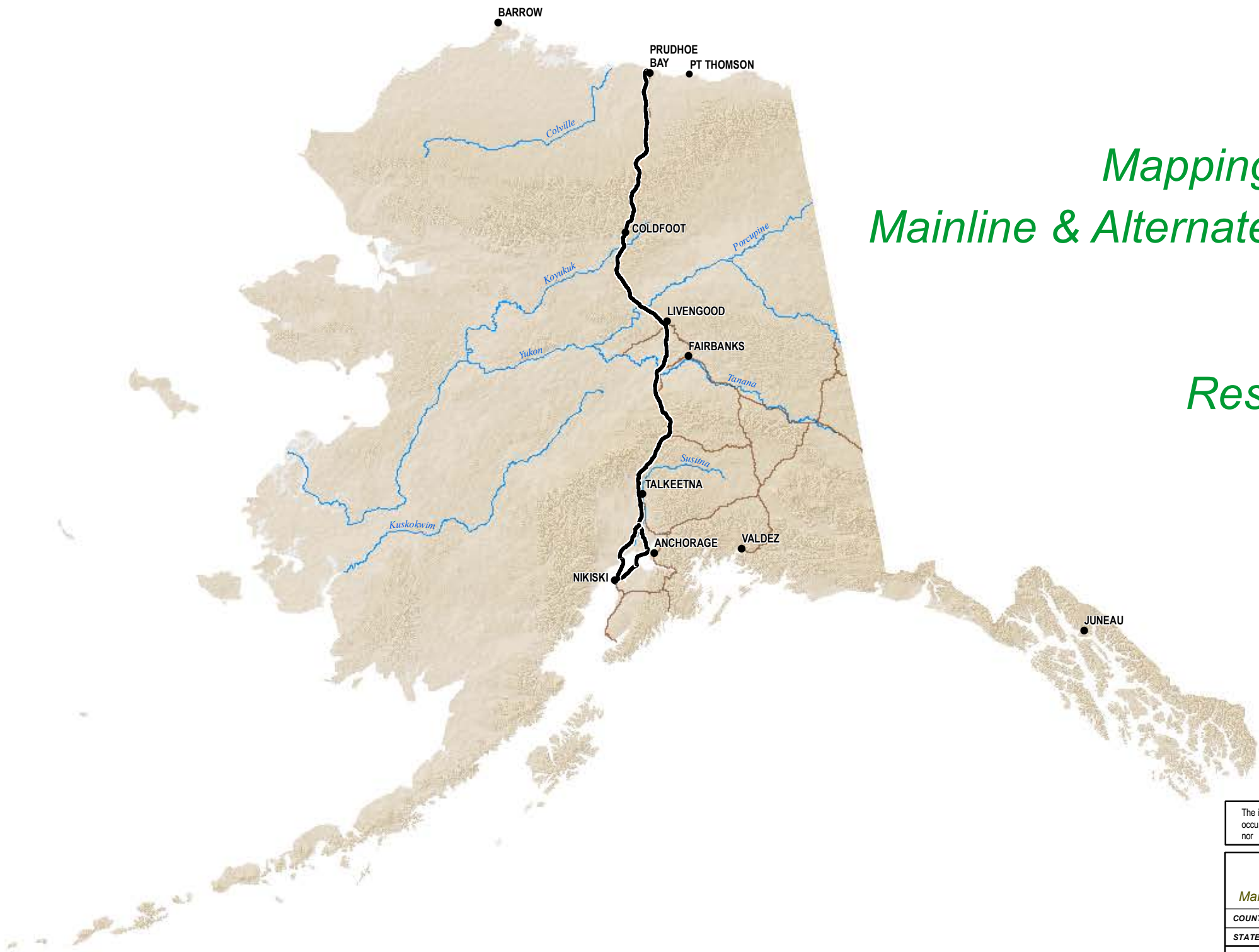


Alaska LNG Project

Mapping Depicting Land Ownership
Mainline & Alternate Corridor (Kenai Peninsula)

Resource Report 8, Appendix A



The information contained herein is for informational or planning purposes only. It does not nor should it be deemed to be an offer, request or proposals for rights or occupation of any kind. The Alaska LNG Project Participants and their respective officers, employees and agents, make no warranty, implied or otherwise, nor accept any liability, as to the accuracy or completeness of the information contained in these documents, drawings or electronic files.

ALASKA LNG PROJECT		
Mapping Depicting Land Ownership - Mainline & Alternate Corridor (Kenai Peninsula)		
COUNTY:	-	DRAWN BY: CC
STATE:	ALASKA	CHECKED BY: JS
REV. NO.:	REVISION	DATE
0	ISSUED FOR REVIEW	2015-02-06
PRELIMINARY		
1:10,000,000	0 100 200 Miles	
DATE:	2015-02-06	PROJECTION: NAD83 STATEPLANE AK 4 5004 FEET

PREPARED BY:

exp Energy Services Inc.

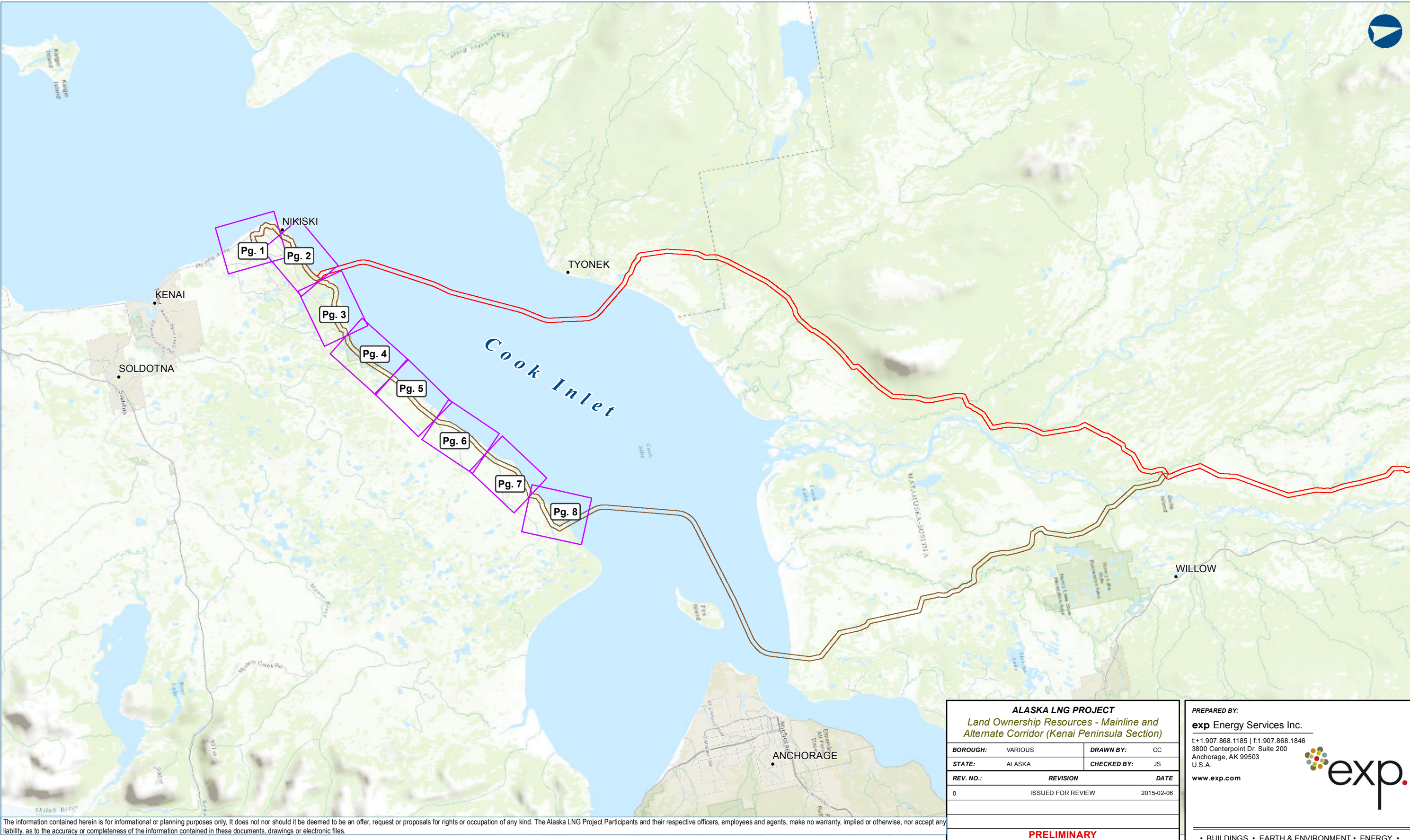
t: +1.907.868.1185 | f: 1.907.868.1846
3800 Centerpoint Dr. Suite 200
Anchorage, AK 99503
U.S.A.

www.exp.com



• BUILDINGS • EARTH & ENVIRONMENT • ENERGY •
• INDUSTRIAL • INFRASTRUCTURE • SUSTAINABILITY •

DWG: COVER-A-MASTER-PRE-FEED SHEET: COVER SHEET



The information contained herein is for informational or planning purposes only. It does not nor should it be deemed to be an offer, request or proposals for rights or occupation of any kind. The Alaska LNG Project Participants and their respective officers, employees and agents, make no warranty, implied or otherwise, nor accept any liability, as to the accuracy or completeness of the information contained in these documents, drawings or electronic files.

ALASKA LNG PROJECT
Land Ownership Resources - Mainline and Alternate Corridor (Kenai Peninsula Section)

BOROUGH:	VARIOUS	DRAWN BY:	CC
STATE:	ALASKA	CHECKED BY:	JS
REV. NO.:	REVISION		DATE
0	ISSUED FOR REVIEW		2015-02-06

1:500,000

0 5 10 Miles


DATE:	2015-02-06	PROJECTION:	NAD83 STATE PLANE AK 4 5004 FEET
-------	------------	-------------	----------------------------------

PRELIMINARY

PREPARED BY:

exp Energy Services Inc.

t: +1.907.868.1185 | f: 1.907.868.1846
3800 Centerpoint Dr. Suite 200
Anchorage, AK 99503
U.S.A.
www.exp.com



• BUILDINGS • EARTH & ENVIRONMENT • ENERGY •
• INDUSTRIAL • INFRASTRUCTURE • SUSTAINABILITY •

DWG:	PRE_FEED_REVA-INDEX	SHEET:	ALT-INDEX-5
------	---------------------	--------	-------------

The information contained herein is for informational or planning purposed only, It does not nor should it be deemed to be an offer, request or proposals for rights or occupation of any kind. The Alaska LNG Project Participants and their respective officers, employees and agents, make no warranty, implied or otherwise, nor accept any liability, as to the accuracy or completeness of the information contained in these documents, drawings or electronic files.

PREPARED BY:

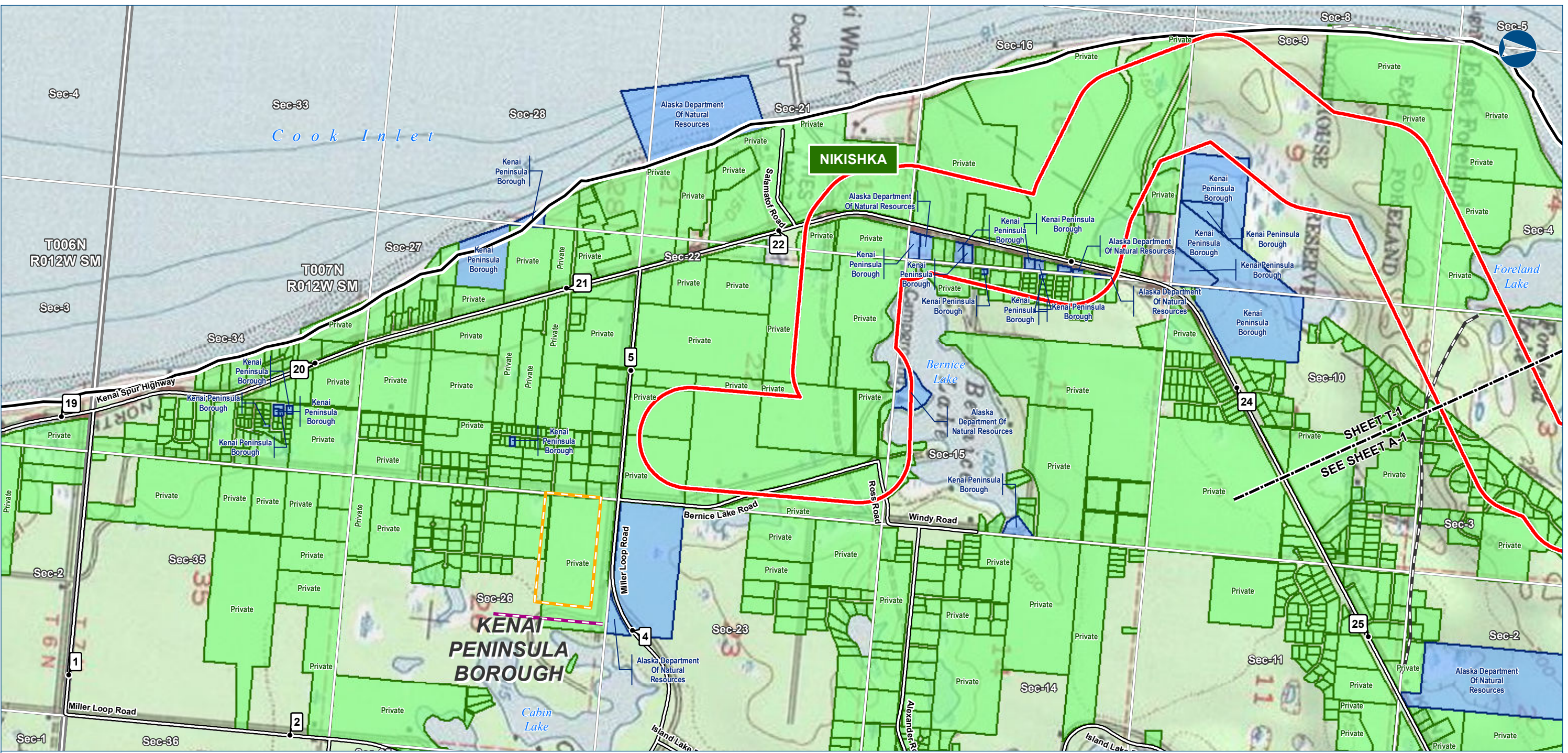
exp Energy Services Inc.

t: +1.907.868.1185 | f: 1.907.868.1846
3800 Centerpoint Dr. Suite 200
Anchorage, AK 99503
U.S.A.

www.exp.com



- BUILDINGS • EARTH & ENVIRONMENT • ENERGY •
- INDUSTRIAL • INFRASTRUCTURE • SUSTAINABILITY •



The information contained herein is for informational or planning purposes only. It does not nor should it be deemed to be an offer, request or proposals for rights or occupation of any kind. The Alaska LNG Project Participants and their respective officers, employees and agents, make no warranty, implied or otherwise, nor accept any liability, as to the accuracy or completeness of the information contained in these documents, drawings or electronic files.



Alaska LNG Project

Study Corridor - 2,000 ft wide (+/-)

Pre-FEED Rev A Base Corridor

Pre-FEED Rev A Alternate Corridor

Easement

Pipeline, Oil / Gas

Road - Existing

Trail - Existing

Trail - Proposed

Managing Authority

Federal Ownership

State Ownership

Municipal Ownership

Private Ownership

RS2477 Trail

Primary Road

Secondary Road

Borough \ Census Area Boundary

Township

Section

ALASKA LNG PROJECT		
Land Ownership - Mainline and Alternate Corridor (Kenai Peninsula Section)		
BOROUGH:	KENAI PENINSULA	DRAWN BY: CC
STATE:	ALASKA	CHECKED BY: JS
REV. NO.:	REVISION	DATE
0	ISSUED FOR REVIEW	2015-02-07
PRELIMINARY		
1:24,000	0 1/4 1/2 Miles	
DATE: 2015-02-07	PROJECTION: NAD83 STATEPLANE AK 4 5004 FEET	

PREPARED BY:

exp Energy Services Inc.

t:1.907.868.1185 | f:1.907.868.1846

3800 Centerpoint Dr. Suite 200

Anchorage, AK 99503

U.S.A.

www.exp.com

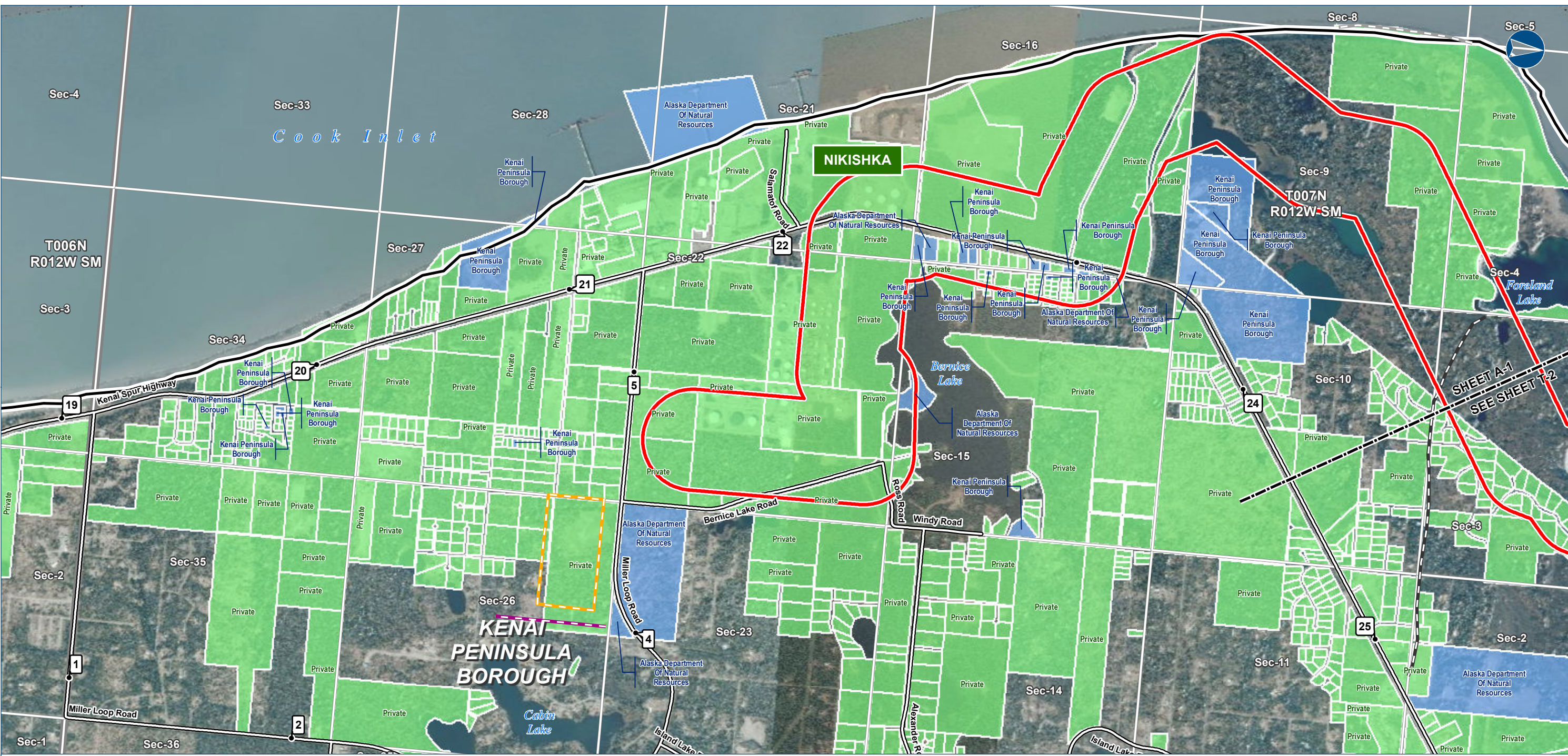
exp.

BUILDINGS • EARTH & ENVIRONMENT • ENERGY •

INDUSTRIAL • INFRASTRUCTURE • SUSTAINABILITY •

DWG: LANDOWNER-T-KENAI_BASE-PRE-FEED

SHEET: T-1



The information contained herein is for informational or planning purposes only. It does not nor should it be deemed to be an offer, request or proposals for rights or occupation of any kind. The Alaska LNG Project Participants and their respective officers, employees and agents, make no warranty, implied or otherwise, nor accept any liability, as to the accuracy or completeness of the information contained in these documents, drawings or electronic files.



LEGEND

Study Corridor - 2,000 ft wide (+/-)

- Pre-FEED Rev A Base Corridor
- Pre-FEED Rev A Alternate Corridor

17b Easement

- Pipeline, Oil / Gas
- Road - Existing
- Trail - Existing
- Trail - Proposed

Managing Authority

- Federal Ownership
- State Ownership
- Municipal Ownership
- Private Ownership
- RS2477 Trail

- Primary Road
- Secondary Road
- Borough \ Census Area Boundary
- Township
- Section

ALASKA LNG PROJECT		
Land Ownership - Mainline and Alternate Corridor (Kenai Peninsula Section)		
BOROUGH:	KENAI PENINSULA	DRAWN BY: CC
STATE:	ALASKA	CHECKED BY: JS
REV. NO.:	REVISION	DATE
0	ISSUED FOR REVIEW	2015-02-07
PRELIMINARY		
1:24,000	0 1/4 1/2 Miles	
DATE: 2015-02-07	PROJECTION: NAD83 STATEPLANE AK 4 5004 FEET	

PREPARED BY:

exp Energy Services Inc.

t:1.907.868.1185 | f:1.907.868.1846
3800 Centerpoint Dr. Suite 200
Anchorage, AK 99503
U.S.A.
www.exp.com

• BUILDINGS • EARTH & ENVIRONMENT • ENERGY •
• INDUSTRIAL • INFRASTRUCTURE • SUSTAINABILITY •

DWG: LANDOWNER-A-KENAI_BASE-PRE-FEED SHEET: A-1

LAND OWNERSHIP - MAINLINE AND ALTERNATE CORRIDOR (KENAI PENINSULA SECTION)



The information contained herein is for informational or planning purposes only. It does not nor should it be deemed to be an offer, request or proposals for rights or occupation of any kind. The Alaska LNG Project Participants and their respective officers, employees and agents, make no warranty, implied or otherwise, nor accept any liability, as to the accuracy or completeness of the information contained in these documents, drawings or electronic files.



Alaska LNG Project

LEGEND

Study Corridor - 2,000 ft wide (+/-)

- Pre-Feed Rev A Base Corridor
- Pre-Feed Rev A Alternate Corridor

Easement

- Pipeline, Oil / Gas
- Road - Existing
- Trail - Existing
- Trail - Proposed

Managing Authority

- Federal Ownership
- State Ownership
- Municipal Ownership
- Private Ownership
- RS2477 Trail

Primary Road

Secondary Road

Borough \ Census Area Boundary

Township

Section

ALASKA LNG PROJECT

Land Ownership - Mainline and Alternate Corridor (Kenai Peninsula Section)

BOROUGH: KENAI PENINSULA	DRAWN BY: CC
STATE: ALASKA	CHECKED BY: JS
REV. NO.: 0	REVISION: ISSUED FOR REVIEW
DATE: 2015-02-07	

PRELIMINARY

1:24,000

0 1/4 1/2 Miles

DATE: 2015-02-07 **PROJECTION:** NAD83 STATEPLANE AK 4 5004 FEET

PREPARED BY:

exp Energy Services Inc.

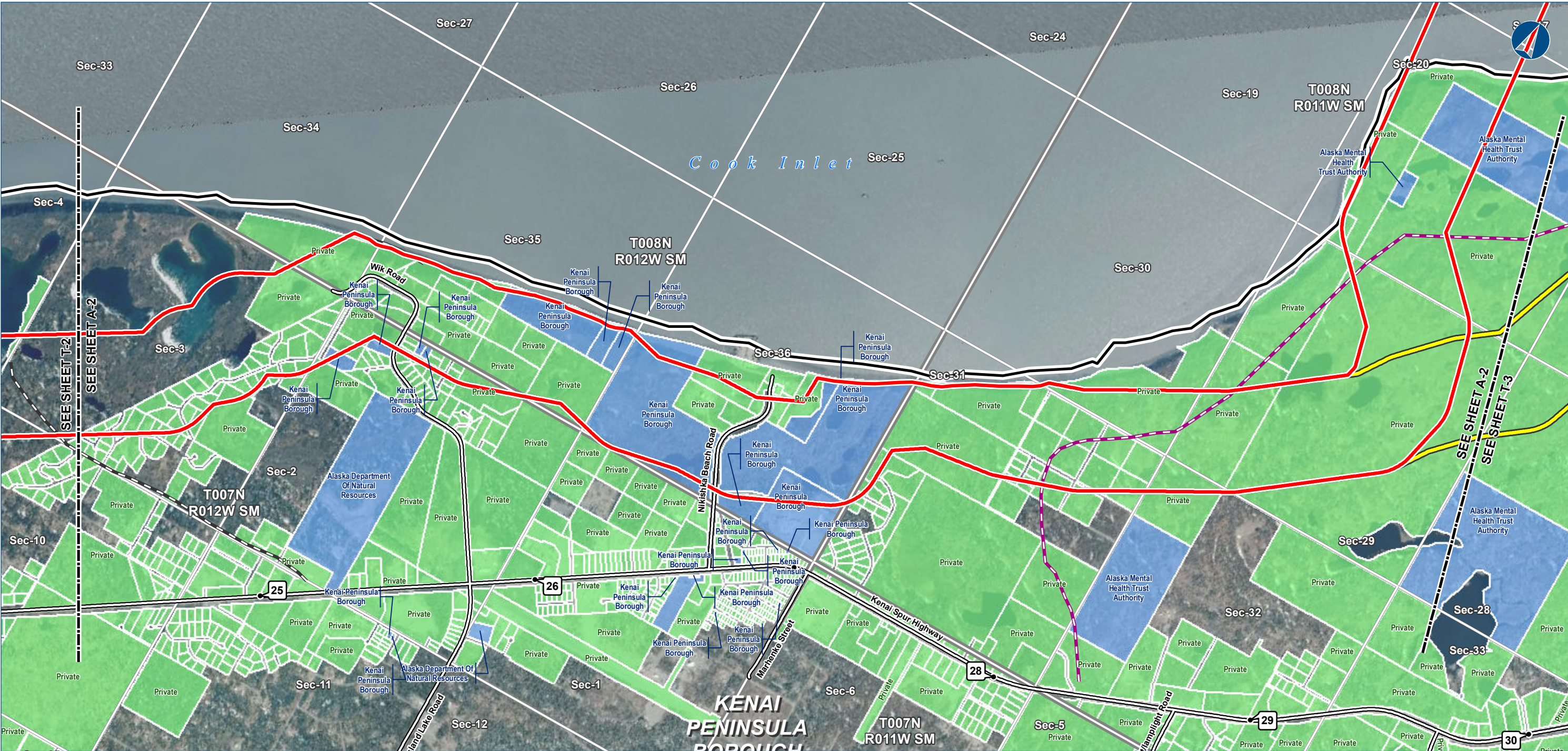
t:1.907.868.1185 | f:1.907.868.1846
3800 Centerpoint Dr. Suite 200
Anchorage, AK 99503
U.S.A.

www.exp.com

**BUILDINGS • EARTH & ENVIRONMENT • ENERGY •
INDUSTRIAL • INFRASTRUCTURE • SUSTAINABILITY •**

DWG: LANDOWNER-T-KENAI_BASE-PRE-FEED **SHEET:** T-2

LAND OWNERSHIP - MAINLINE AND ALTERNATE CORRIDOR (KENAI PENINSULA SECTION)



The information contained herein is for informational or planning purposes only. It does not nor should it be deemed to be an offer, request or proposals for rights or occupation of any kind. The Alaska LNG Project Participants and their respective officers, employees and agents, make no warranty, implied or otherwise, nor accept any liability, as to the accuracy or completeness of the information contained in these documents, drawings or electronic files.



Alaska LNG Project

LEGEND

Study Corridor - 2,000 ft wide (+/-)

- Pre-FEED Rev A Base Corridor
- Pre-FEED Rev A Alternate Corridor

17b Easement

- Pipeline, Oil / Gas
- Road - Existing
- Trail - Existing
- Trail - Proposed

Managing Authority

- Federal Ownership
- State Ownership
- Municipal Ownership
- Private Ownership
- RS2477 Trail

- Primary Road
- Secondary Road
- Borough \ Census Area Boundary
- Township
- Section

ALASKA LNG PROJECT

Land Ownership - Mainline and Alternate Corridor (Kenai Peninsula Section)

BOROUGH: KENAI PENINSULA	DRAWN BY: CC
STATE: ALASKA	CHECKED BY: JS
REV. NO.: 0	REVISION: ISSUED FOR REVIEW
DATE: 2015-02-07	

PRELIMINARY

1:24,000

0 1/4 1/2 Miles

DATE: 2015-02-07 **PROJECTION:** NAD83 STATEPLANE AK 4 5004 FEET

PREPARED BY:

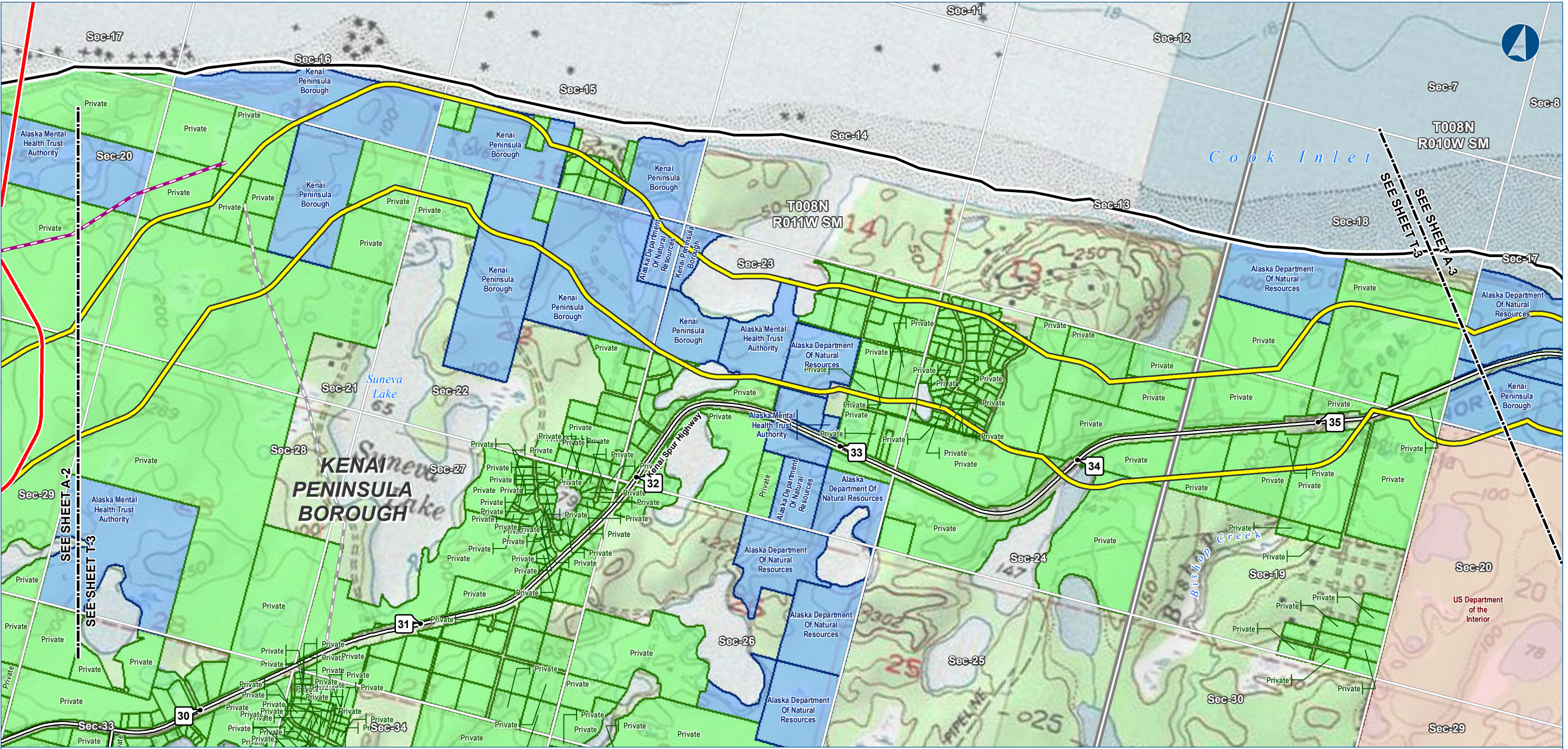
exp Energy Services Inc.

t: +1.907.868.1185 | f: +1.907.868.1846
3800 Centerpoint Dr. Suite 200
Anchorage, AK 99503
U.S.A.
www.exp.com

**BUILDINGS • EARTH & ENVIRONMENT • ENERGY •
INDUSTRIAL • INFRASTRUCTURE • SUSTAINABILITY •**

DWG: LANDOWNER-A-KENAI_BASE-PRE-FEED **SHEET:** A-2

LAND OWNERSHIP - MAINLINE AND ALTERNATE CORRIDOR (KENAI PENINSULA SECTION)



The information contained herein is for informational or planning purposes only. It does not nor should it be deemed to be an offer, request or proposals for rights or occupation of any kind. The Alaska LNG Project Participants and their respective officers, employees and agents, make no warranty, implied or otherwise, nor accept any liability, as to the accuracy or completeness of the information contained in these documents, drawings or electronic files.



Alaska LNG Project

LEGEND

- Study Corridor - 2,000 ft wide (+/-)**
- Pre-FEED Rev A Base Corridor
 - Pre-FEED Rev A Alternate Corridor
- Easement**
- Pipeline, Oil / Gas
 - Road - Existing
 - Trail - Existing
 - Trail - Proposed
- Managing Authority**
- Federal Ownership
 - State Ownership
 - Municipal Ownership
 - Private Ownership
 - RS2477 Trail
- Primary Road**
- Secondary Road
- Borough \ Census Area Boundary**
- Township
 - Section

ALASKA LNG PROJECT
Land Ownership - Mainline and Alternate Corridor
(Kenai Peninsula Section)

BOROUGH:	KENAI PENINSULA	DRAWN BY:	CC
STATE:	ALASKA	CHECKED BY:	JS
REV. NO.:	0	REVISION	ISSUED FOR REVIEW
DATE:	2015-02-07	DATE	2015-02-07

PRELIMINARY			
1:24,000	0	1/4	1/2 Miles
DATE:	2015-02-07	PROJECTION:	NAD83 STATEPLANE AK 4 5004 FEET

PREPARED BY:

exp Energy Services Inc.

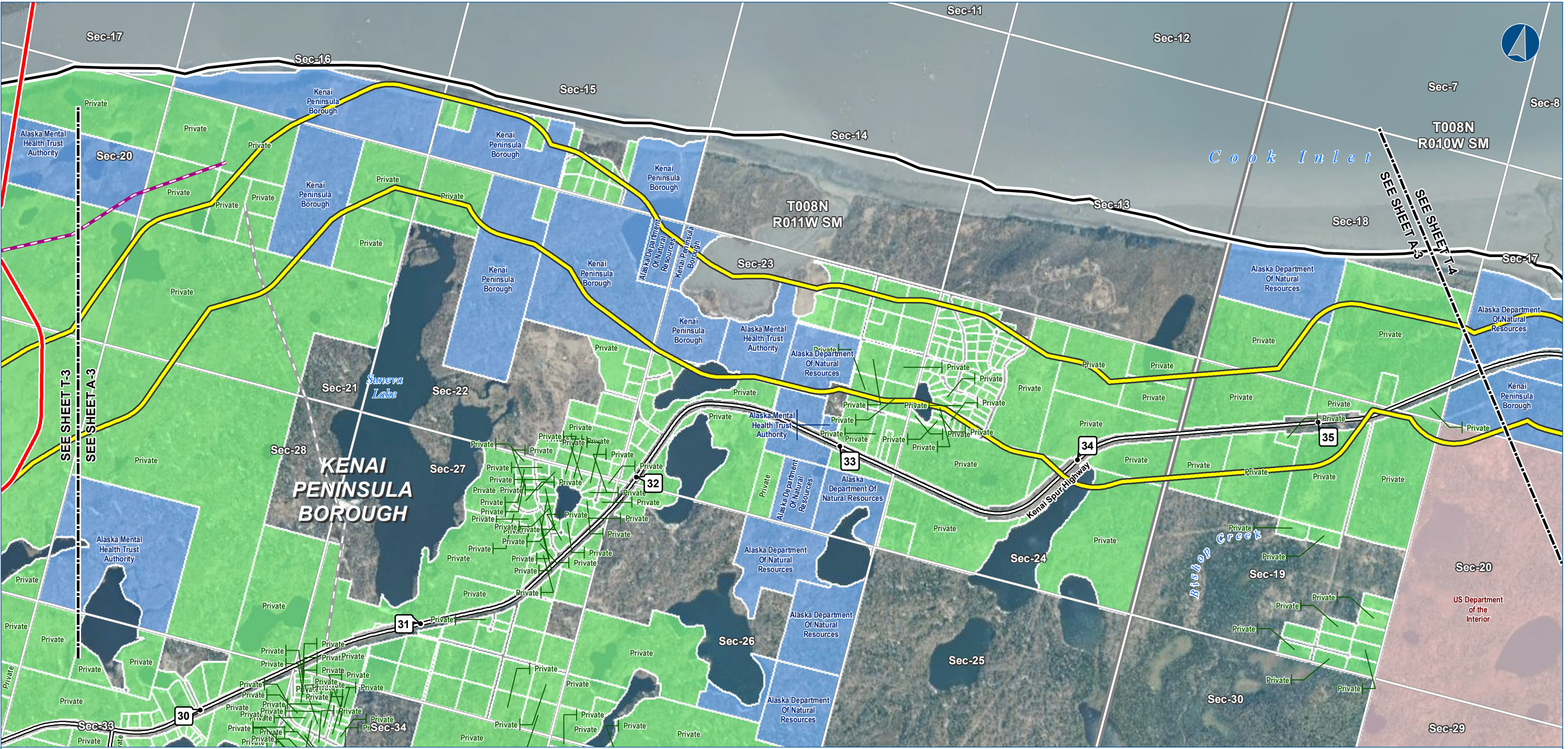
t: +1.907.868.1185 | f: +1.907.868.1846
3800 Centerpoint Dr. Suite 200
Anchorage, AK 99503
U.S.A.

www.exp.com



• BUILDINGS • EARTH & ENVIRONMENT • ENERGY •
• INDUSTRIAL • INFRASTRUCTURE • SUSTAINABILITY •

DWG: LANDOWNER-T-KENAI_BASE-PRE-FEED SHEET: T-3



The information contained herein is for informational or planning purposes only. It does not nor should it be deemed to be an offer, request or proposals for rights or occupation of any kind. The Alaska LNG Project Participants and their respective officers, employees and agents, make no warranty, implied or otherwise, nor accept any liability, as to the accuracy or completeness of the information contained in these documents, drawings or electronic files.



Alaska LNG Project

LEGEND

Study Corridor - 2,000 ft wide (+/-)

- Pre-FEED Rev A Base Corridor
- Pre-FEED Rev A Alternate Corridor

17b Easement

- Pipeline, Oil / Gas
- Road - Existing
- Trail - Existing
- Trail - Proposed

Managing Authority

- Federal Ownership
- State Ownership
- Municipal Ownership
- Private Ownership
- RS2477 Trail

- Primary Road
- Secondary Road
- Borough \ Census Area Boundary
- Township
- Section

ALASKA LNG PROJECT		
Land Ownership - Mainline and Alternate Corridor (Kenai Peninsula Section)		
BOROUGH:	KENAI PENINSULA	DRAWN BY: CC
STATE:	ALASKA	CHECKED BY: JS
REV. NO.:	REVISION	DATE
0	ISSUED FOR REVIEW	2015-02-07
PRELIMINARY		
1:24,000	0 1/4 1/2 Miles	
DATE: 2015-02-07	PROJECTION: NAD83 STATEPLANE AK 4 5004 FEET	

PREPARED BY:

exp Energy Services Inc.

t: +1.907.868.1185 | f: +1.907.868.1846

3800 Centerpoint Dr. Suite 200

Anchorage, AK 99503

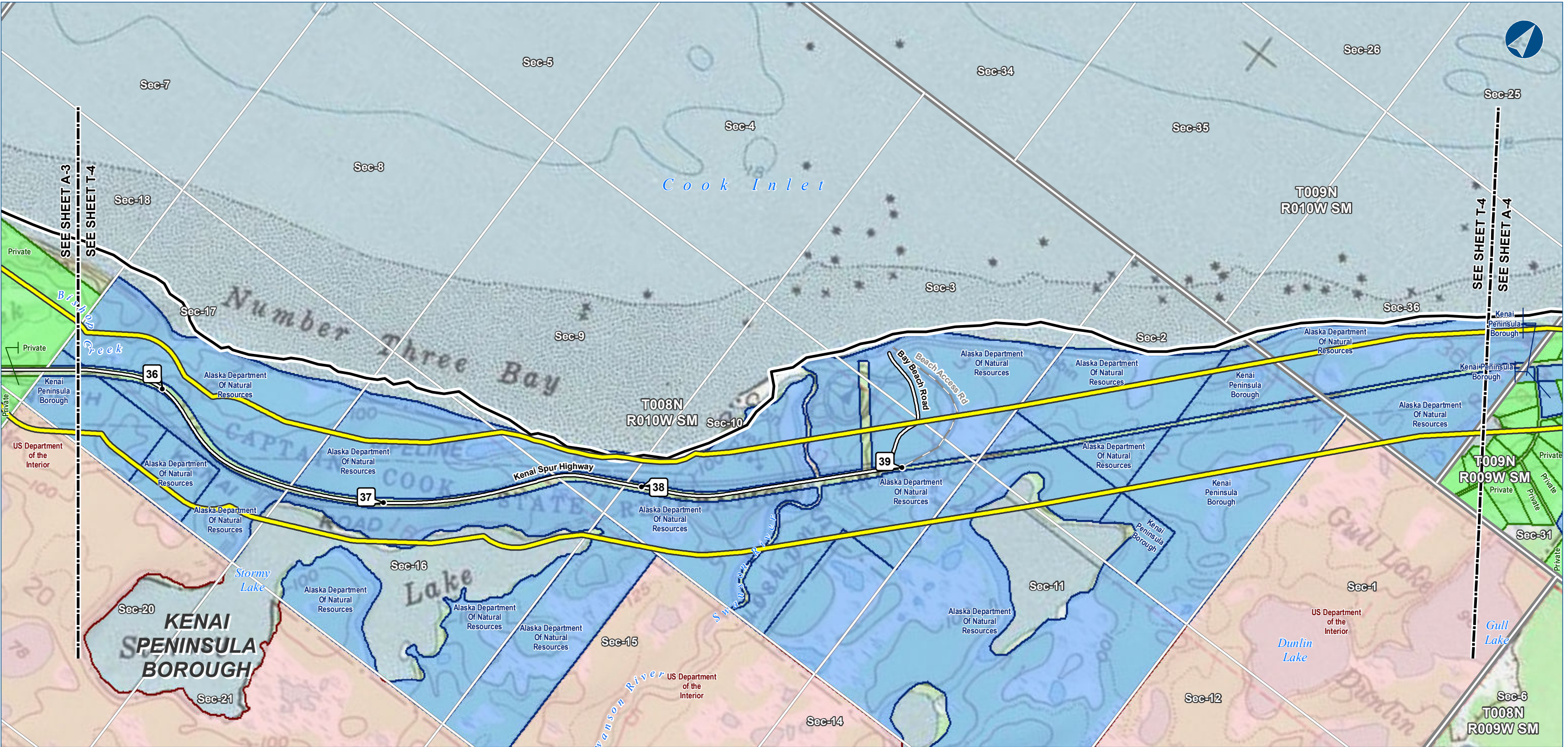
U.S.A.

www.exp.com

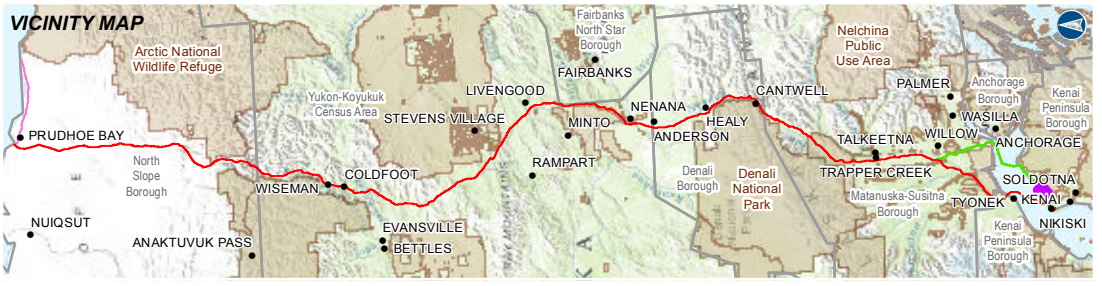
• BUILDINGS • EARTH & ENVIRONMENT • ENERGY •

• INDUSTRIAL • INFRASTRUCTURE • SUSTAINABILITY •

DWG: LANDOWNER-A-KENAI_BASE-PRE-FEED SHEET: A-3



The information contained herein is for informational or planning purposes only. It does not nor should it be deemed to be an offer, request or proposals for rights or occupation of any kind. The Alaska LNG Project Participants and their respective officers, employees and agents, make no warranty, implied or otherwise, nor accept any liability, as to the accuracy or completeness of the information contained in these documents, drawings or electronic files.



Alaska LNG Project

LEGEND

Study Corridor - 2,000 ft wide (+/-)

- Pre-FEED Rev A Base Corridor
- Pre-FEED Rev A Alternate Corridor

Easement

- Pipeline, Oil / Gas
- Road - Existing
- Trail - Existing
- Trail - Proposed

Managing Authority

- Federal Ownership
- State Ownership
- Municipal Ownership
- Private Ownership
- RS2477 Trail

Primary Road

Secondary Road

Borough \ Census Area Boundary

Township

Section

ALASKA LNG PROJECT		
Land Ownership - Mainline and Alternate Corridor (Kenai Peninsula Section)		
BOROUGH:	KENAI PENINSULA	DRAWN BY: CC
STATE:	ALASKA	CHECKED BY: JS
REV. NO.:	REVISION	DATE
0	ISSUED FOR REVIEW	2015-02-07
PRELIMINARY		
1:24,000	0 1/4 1/2 Miles	
DATE: 2015-02-07	PROJECTION: NAD83 STATEPLANE AK 4 5004 FEET	

PREPARED BY:

exp Energy Services Inc.

t: +1.907.868.1185 | f: +1.907.868.1846

3800 Centerpoint Dr. Suite 200

Anchorage, AK 99503

U.S.A.

www.exp.com

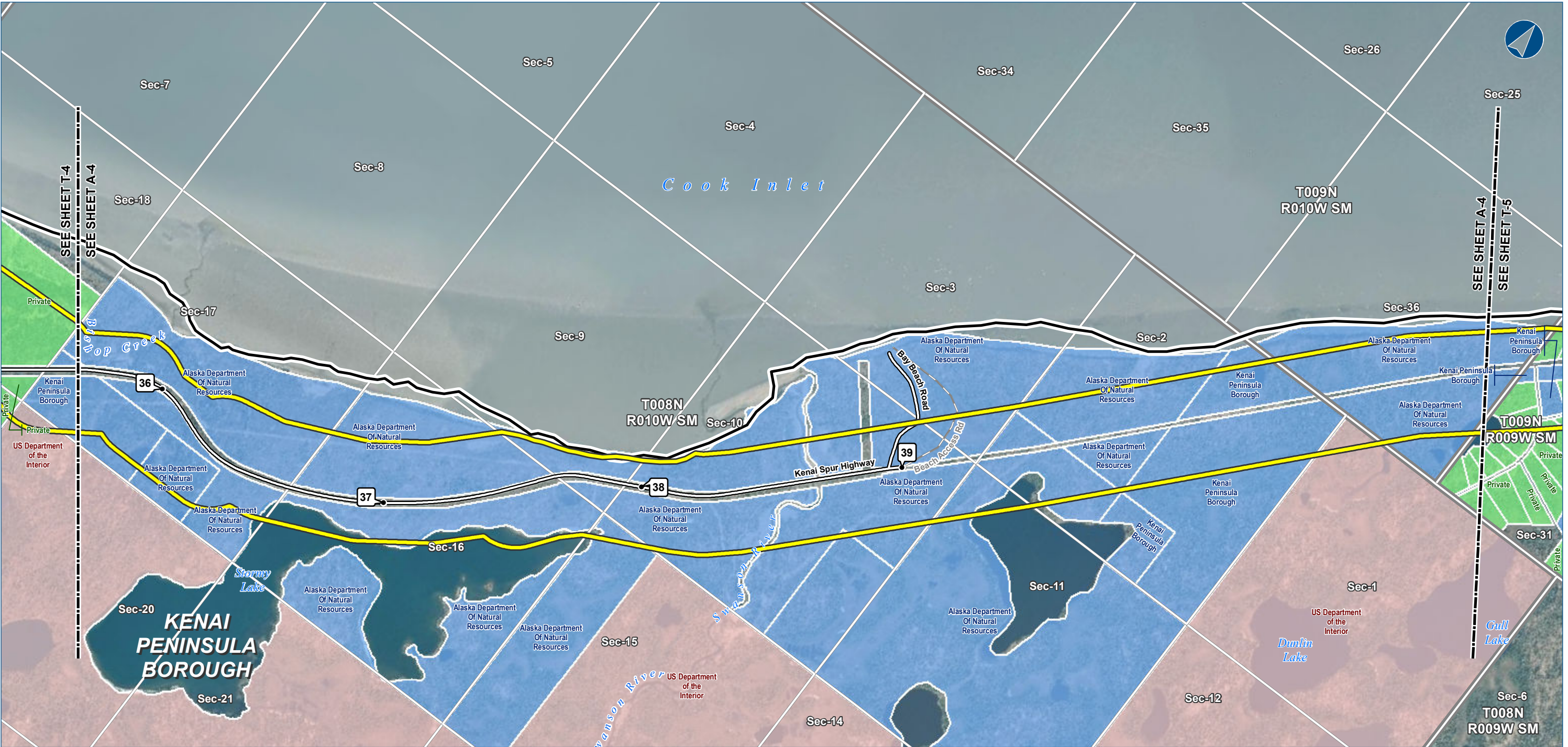
exp.

• BUILDINGS • EARTH & ENVIRONMENT • ENERGY •

• INDUSTRIAL • INFRASTRUCTURE • SUSTAINABILITY •

DWG: LANDOWNER-T-KENAI_BASE-PRE-FEED

SHEET: T-4



The information contained herein is for informational or planning purposes only. It does not nor should it be deemed to be an offer, request or proposals for rights or occupation of any kind. The Alaska LNG Project Participants and their respective officers, employees and agents, make no warranty, implied or otherwise, nor accept any liability, as to the accuracy or completeness of the information contained in these documents, drawings or electronic files.



Alaska LNG Project

LEGEND

Study Corridor - 2,000 ft wide (+/-)

- Pre-FEED Rev A Base Corridor
- Pre-FEED Rev A Alternate Corridor

17b Easement

- Pipeline, Oil / Gas
- Road - Existing
- Trail - Existing
- Trail - Proposed

Managing Authority

- Federal Ownership
- State Ownership
- Municipal Ownership
- Private Ownership
- RS2477 Trail

- Primary Road
- Secondary Road
- Borough \ Census Area Boundary
- Township
- Section

ALASKA LNG PROJECT		
Land Ownership - Mainline and Alternate Corridor (Kenai Peninsula Section)		
BOROUGH:	KENAI PENINSULA	DRAWN BY: CC
STATE:	ALASKA	CHECKED BY: JS
REV. NO.:	REVISION	DATE
0	ISSUED FOR REVIEW	2015-02-07
PRELIMINARY		
1:24,000	0 1/4 1/2 Miles	
DATE: 2015-02-07	PROJECTION: NAD83 STATEPLANE AK 4 5004 FEET	

PREPARED BY:

exp Energy Services Inc.

t: +1.907.868.1185 | f: +1.907.868.1846

3800 Centerpoint Dr. Suite 200

Anchorage, AK 99503

U.S.A.

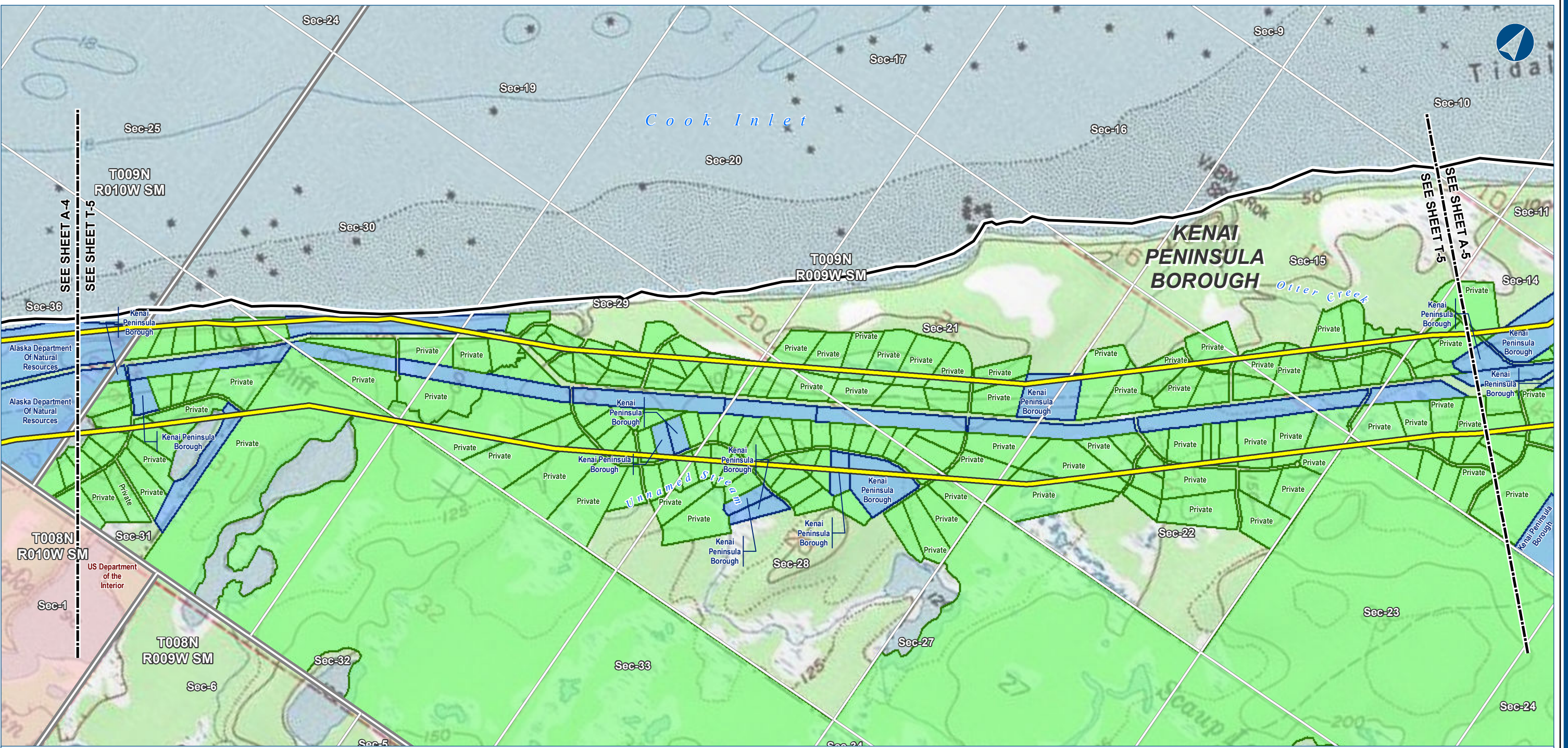
www.exp.com

• BUILDINGS • EARTH & ENVIRONMENT • ENERGY •

• INDUSTRIAL • INFRASTRUCTURE • SUSTAINABILITY •

DWG: LANDOWNER-A-KENAI_BASE-PRE-FEED

SHEET: A-4



The information contained herein is for informational or planning purposes only. It does not nor should it be deemed to be an offer, request or proposals for rights or occupation of any kind. The Alaska LNG Project Participants and their respective officers, employees and agents, make no warranty, implied or otherwise, nor accept any liability, as to the accuracy or completeness of the information contained in these documents, drawings or electronic files.



Alaska LNG Project

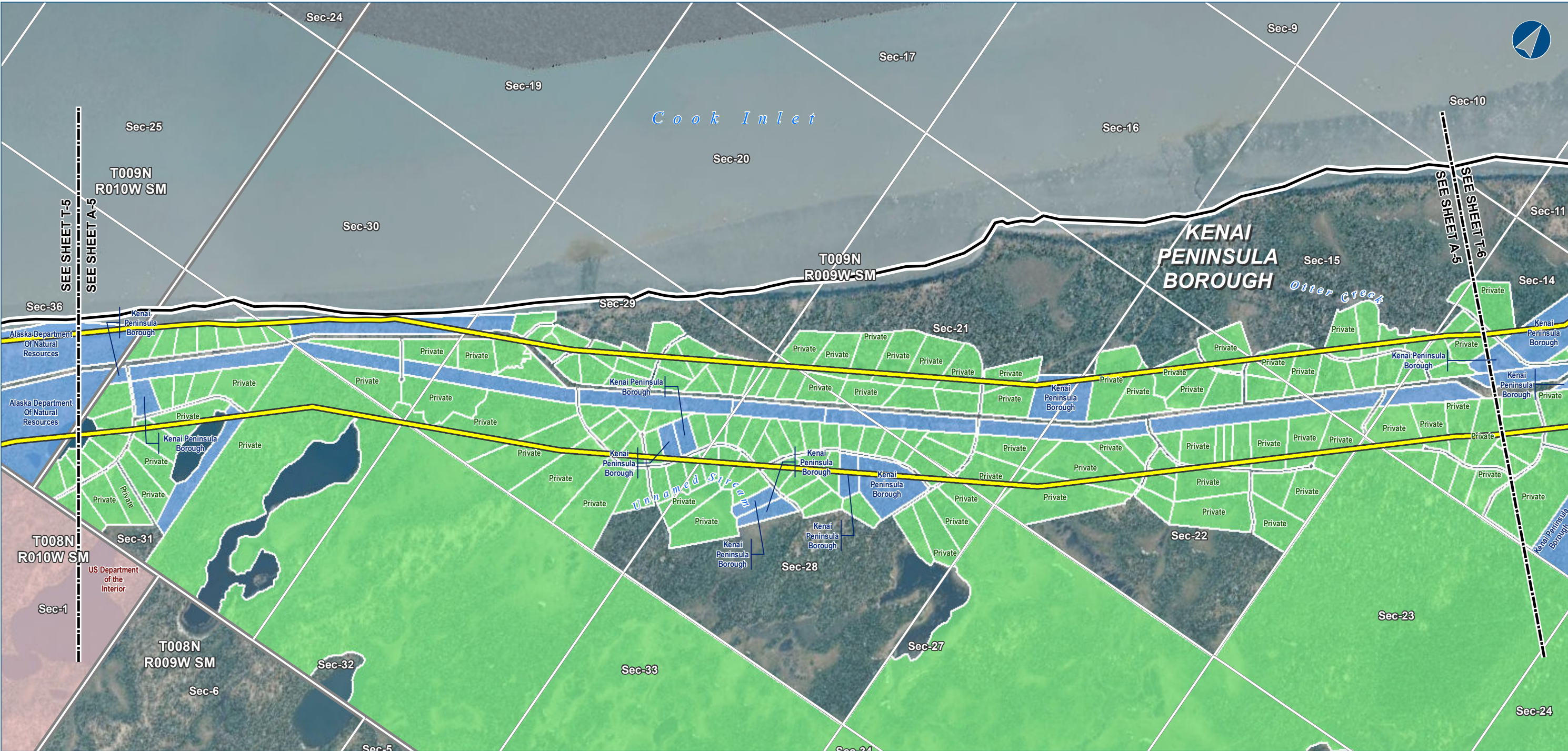
LEGEND
Study Corridor - 2,000 ft wide (+/-)
Pre-FEED Rev A Base Corridor
Pre-FEED Rev A Alternate Corridor
Easement
Pipeline, Oil / Gas
Road - Existing
Trail - Existing
Trail - Proposed
Managing Authority
Federal Ownership
State Ownership
Municipal Ownership
Private Ownership
RS2477 Trail
Primary Road
Secondary Road
Borough \ Census Area Boundary
Township
Section

ALASKA LNG PROJECT		
Land Ownership - Mainline and Alternate Corridor (Kenai Peninsula Section)		
BOROUGH:	KENAI PENINSULA	DRAWN BY: CC
STATE:	ALASKA	CHECKED BY: JS
REV. NO.:	REVISION	DATE
0	ISSUED FOR REVIEW	2015-02-07
PRELIMINARY		
1:24,000	0 1/4 1/2 Miles	
DATE: 2015-02-07	PROJECTION: NAD83 STATEPLANE AK 4 5004 FEET	

PREPARED BY:
exp Energy Services Inc.
t: +1.907.868.1185 | f: 1.907.868.1846
3800 Centerpoint Dr. Suite 200
Anchorage, AK 99503
U.S.A.
www.exp.com

**BUILDINGS • EARTH & ENVIRONMENT • ENERGY •
INDUSTRIAL • INFRASTRUCTURE • SUSTAINABILITY •**

DWG: LANDOWNER-T-KENAI_BASE-PRE-FEED SHEET: T-5



The information contained herein is for informational or planning purposes only. It does not nor should it be deemed to be an offer, request or proposals for rights or occupation of any kind. The Alaska LNG Project Participants and their respective officers, employees and agents, make no warranty, implied or otherwise, nor accept any liability, as to the accuracy or completeness of the information contained in these documents, drawings or electronic files.



Alaska LNG Project

LEGEND

Study Corridor - 2,000 ft wide (+/-)

- Pre-FEED Rev A Base Corridor
- Pre-FEED Rev A Alternate Corridor

17b Easement

- Pipeline, Oil / Gas
- Road - Existing
- Trail - Existing
- Trail - Proposed

Managing Authority

- Federal Ownership
- State Ownership
- Municipal Ownership
- Private Ownership
- RS2477 Trail

- Primary Road
- Secondary Road
- Borough \ Census Area Boundary
- Township
- Section

ALASKA LNG PROJECT		
Land Ownership - Mainline and Alternate Corridor (Kenai Peninsula Section)		
BOROUGH:	KENAI PENINSULA	DRAWN BY: CC
STATE:	ALASKA	CHECKED BY: JS
REV. NO.:	REVISION	DATE
0	ISSUED FOR REVIEW	2015-02-07
PRELIMINARY		
1:24,000	0 1/4 1/2 Miles	
DATE: 2015-02-07	PROJECTION: NAD83 STATEPLANE AK 4 5004 FEET	

PREPARED BY:

exp Energy Services Inc.

t: +1.907.868.1185 | f: +1.907.868.1846

3800 Centerpoint Dr. Suite 200

Anchorage, AK 99503

U.S.A.

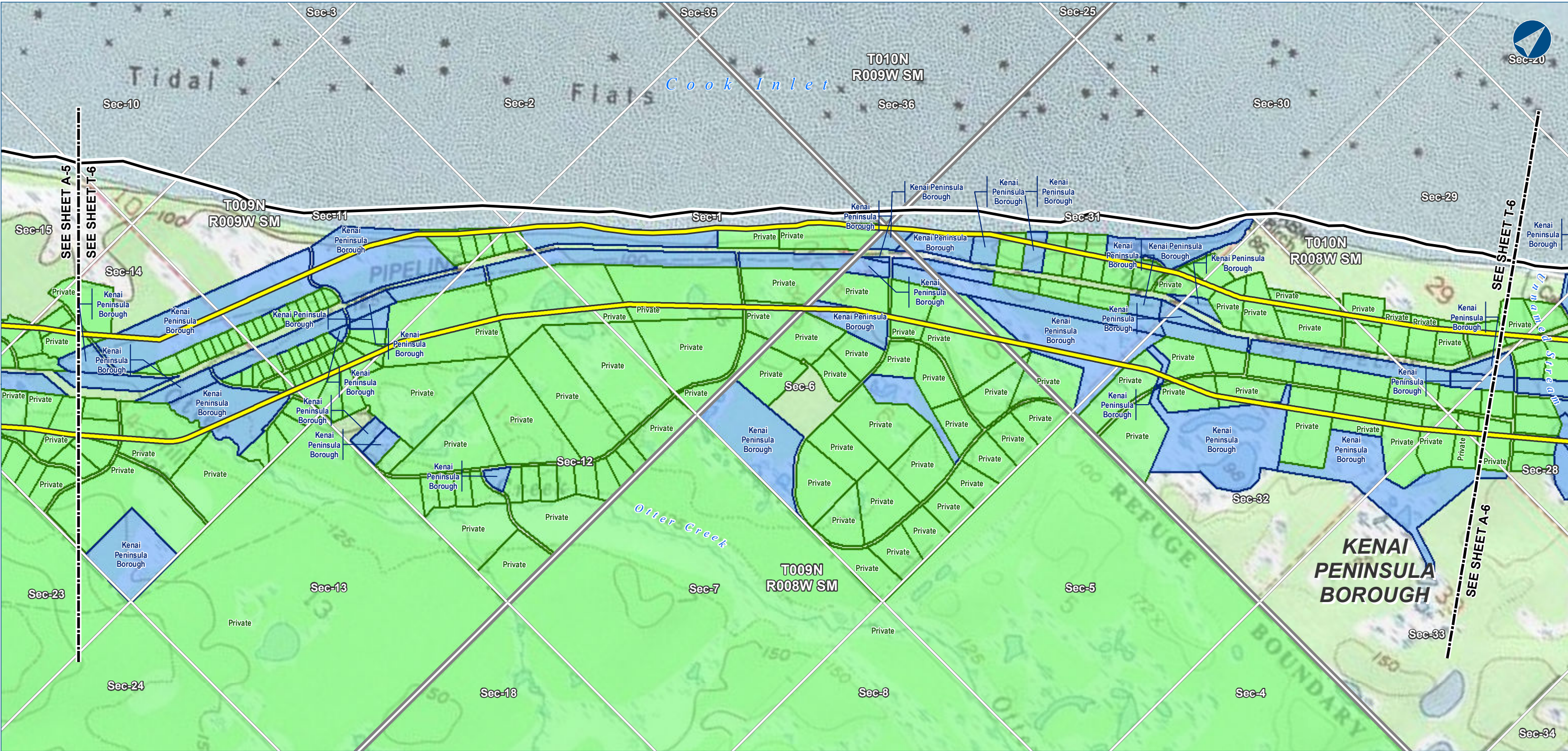
www.exp.com

• BUILDINGS • EARTH & ENVIRONMENT • ENERGY •

• INDUSTRIAL • INFRASTRUCTURE • SUSTAINABILITY •

DWG: LANDOWNER-A-KENAI_BASE-PRE-FEED

SHEET: A-5



The information contained herein is for informational or planning purposes only. It does not nor should it be deemed to be an offer, request or proposals for rights or occupation of any kind. The Alaska LNG Project Participants and their respective officers, employees and agents, make no warranty, implied or otherwise, nor accept any liability, as to the accuracy or completeness of the information contained in these documents, drawings or electronic files.



Alaska LNG Project

LEGEND

Study Corridor - 2,000 ft wide (+/-)

- Pre-FEED Rev A Base Corridor
- Pre-FEED Rev A Alternate Corridor

Easement

- Pipeline, Oil / Gas
- Road - Existing
- Trail - Existing
- Trail - Proposed

Managing Authority

- Federal Ownership
- State Ownership
- Municipal Ownership
- Private Ownership
- RS2477 Trail

Primary Road

Secondary Road

Borough \ Census Area Boundary

Township

Section

ALASKA LNG PROJECT		
Land Ownership - Mainline and Alternate Corridor (Kenai Peninsula Section)		
BOROUGH:	KENAI PENINSULA	DRAWN BY: CC
STATE:	ALASKA	CHECKED BY: JS
REV. NO.:	REVISION	DATE
0	ISSUED FOR REVIEW	2015-02-07
PRELIMINARY		
1:24,000	0 1/4 1/2 Miles	
DATE: 2015-02-07	PROJECTION: NAD83 STATEPLANE AK 4 5004 FEET	

PREPARED BY:

exp Energy Services Inc.

t: +1.907.868.1185 | f: 1.907.868.1846

3800 Centerpoint Dr. Suite 200

Anchorage, AK 99503

U.S.A.

www.exp.com

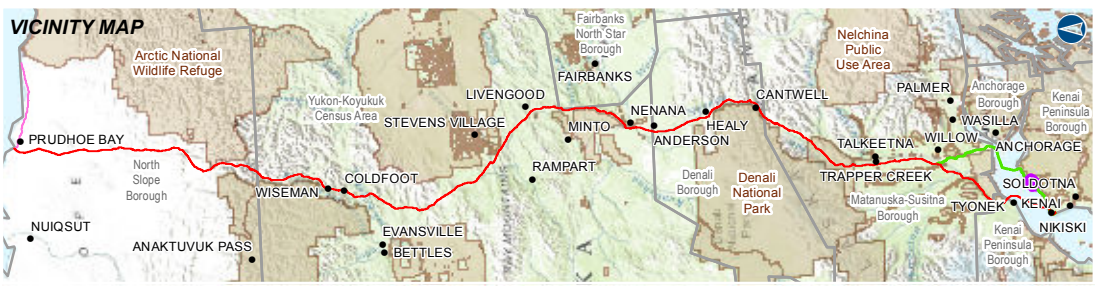
• BUILDINGS • EARTH & ENVIRONMENT • ENERGY •

• INDUSTRIAL • INFRASTRUCTURE • SUSTAINABILITY •

DWG: LANDOWNER-T-KENAI_BASE-PRE-FEED SHEET: T-6



The information contained herein is for informational or planning purposes only. It does not nor should it be deemed to be an offer, request or proposals for rights or occupation of any kind. The Alaska LNG Project Participants and their respective officers, employees and agents, make no warranty, implied or otherwise, nor accept any liability, as to the accuracy or completeness of the information contained in these documents, drawings or electronic files.



LEGEND

Study Corridor - 2,000 ft wide (+/-)

- Pre-FEED Rev A Base Corridor
- Pre-FEED Rev A Alternate Corridor

17b Easement

- Pipeline, Oil / Gas
- Road - Existing
- Trail - Existing
- Trail - Proposed

Managing Authority

- Federal Ownership
- State Ownership
- Municipal Ownership
- Private Ownership
- RS2477 Trail

- Primary Road
- Secondary Road
- Borough \ Census Area Boundary
- Township
- Section

ALASKA LNG PROJECT

Land Ownership - Mainline and Alternate Corridor (Kenai Peninsula Section)

BOROUGH: KENAI PENINSULA	DRAWN BY: CC
STATE: ALASKA	CHECKED BY: JS
REV. NO.: 0	REVISION: ISSUED FOR REVIEW
DATE: 2015-02-07	

PRELIMINARY

1:24,000

DATE: 2015-02-07 **PROJECTION:** NAD83 STATEPLANE AK 4 5004 FEET

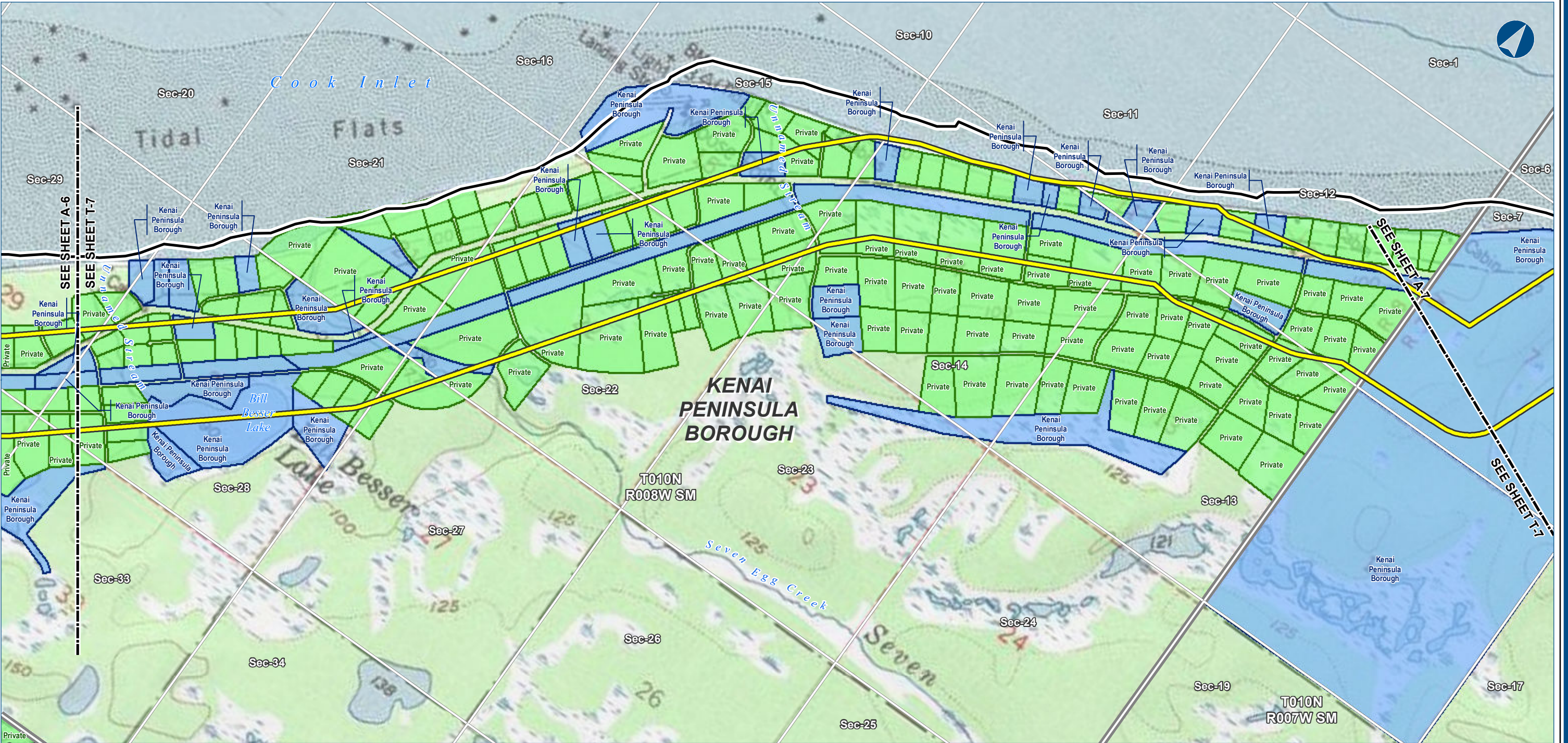
PREPARED BY:

exp Energy Services Inc.

t: +1.907.868.1185 | f: 1.907.868.1846
3800 Centerpoint Dr. Suite 200
Anchorage, AK 99503
U.S.A.
www.exp.com

**BUILDINGS • EARTH & ENVIRONMENT • ENERGY •
INDUSTRIAL • INFRASTRUCTURE • SUSTAINABILITY •**

DWG: LANDOWNER-A-KENAI_BASE-PRE-FEED **SHEET:** A-6



The information contained herein is for informational or planning purposes only. It does not nor should it be deemed to be an offer, request or proposals for rights or occupation of any kind. The Alaska LNG Project Participants and their respective officers, employees and agents, make no warranty, implied or otherwise, nor accept any liability, as to the accuracy or completeness of the information contained in these documents, drawings or electronic files.



Alaska LNG Project

LEGEND

Study Corridor - 2,000 ft wide (+/-)

Pre-FEED Rev A Base Corridor

Pre-FEED Rev A Alternate Corridor

Easement

Pipeline, Oil / Gas

Road - Existing

Trail - Existing

Trail - Proposed

Managing Authority

Federal Ownership

State Ownership

Municipal Ownership

Private Ownership

RS2477 Trail

Primary Road

Secondary Road

Borough \ Census Area Boundary

Township

Section

ALASKA LNG PROJECT		
Land Ownership - Mainline and Alternate Corridor (Kenai Peninsula Section)		
BOROUGH:	KENAI PENINSULA	DRAWN BY: CC
STATE:	ALASKA	CHECKED BY: JS
REV. NO.:	REVISION	DATE
0	ISSUED FOR REVIEW	2015-02-07
PRELIMINARY		
1:24,000	0 1/4 1/2 Miles	
DATE: 2015-02-07	PROJECTION: NAD83 STATEPLANE AK 4 5004 FEET	

PREPARED BY:

exp Energy Services Inc.

t: +1.907.868.1185 | f: 1.907.868.1846

3800 Centerpoint Dr. Suite 200

Anchorage, AK 99503

U.S.A.

www.exp.com

exp.

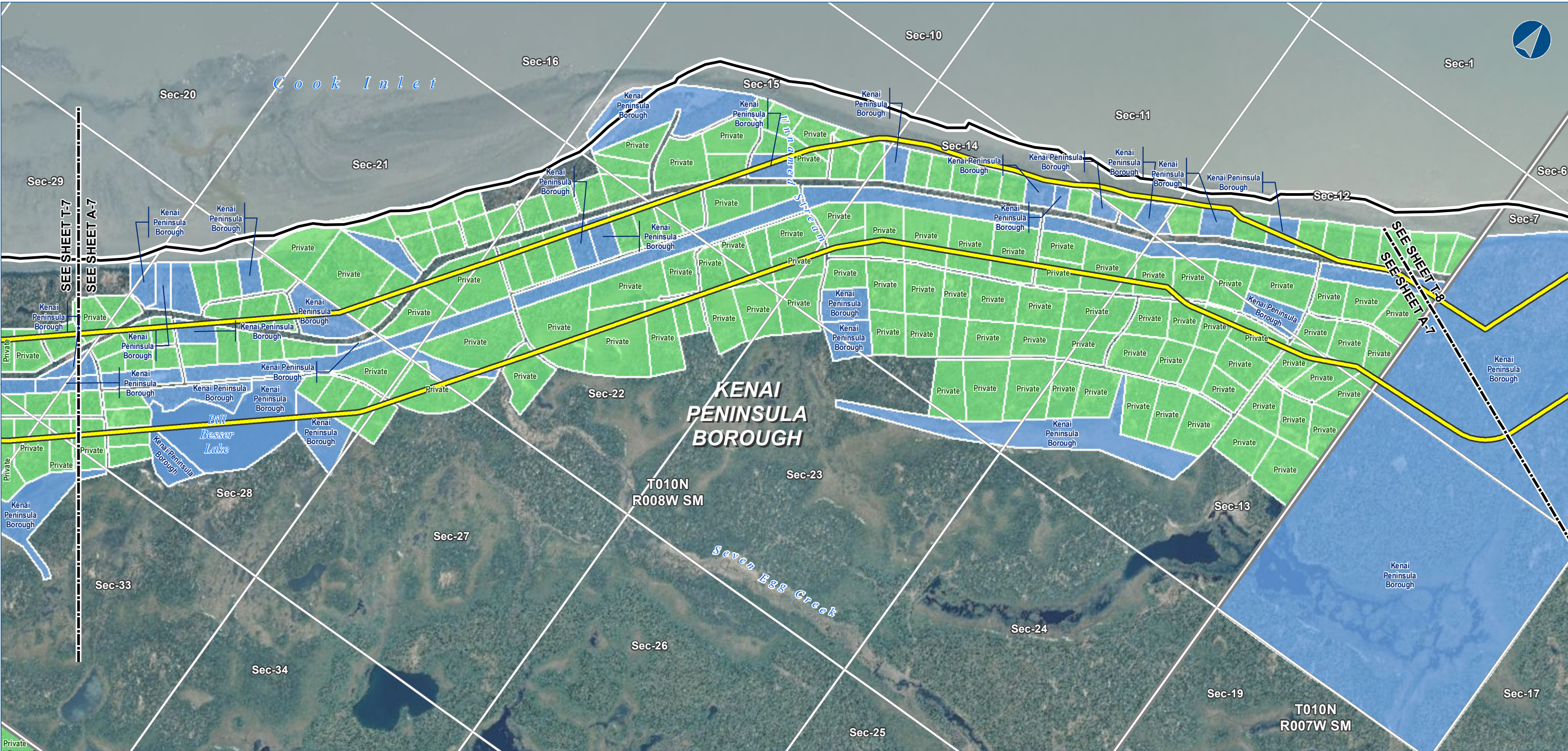
BUILDINGS • EARTH & ENVIRONMENT • ENERGY •

INDUSTRIAL • INFRASTRUCTURE • SUSTAINABILITY •

DWG: LANDOWNER-T-KENAI_BASE-PRE-FEED

SHEET: T-7

\\ptalpzn2011\TLH_Geomatics\Projects\ExxonMobil\SCLNGLMapping\20150130_ResourceReport_Final\FercFiling\04_MXD\RR8\Pre_FEED_RevA-T-LandOwner_RR8_KENAIrte.mxd



The information contained herein is for informational or planning purposes only. It does not nor should it be deemed to be an offer, request or proposals for rights or occupation of any kind. The Alaska LNG Project Participants and their respective officers, employees and agents, make no warranty, implied or otherwise, nor accept any liability, as to the accuracy or completeness of the information contained in these documents, drawings or electronic files.



Alaska LNG Project

LEGEND

Study Corridor - 2,000 ft wide (+/-)

- Pre-FEED Rev A Base Corridor
- Pre-FEED Rev A Alternate Corridor

17b Easement

- Pipeline, Oil / Gas
- Road - Existing
- Trail - Existing
- Trail - Proposed

Managing Authority

- Federal Ownership
- State Ownership
- Municipal Ownership
- Private Ownership
- RS2477 Trail

- Primary Road
- Secondary Road
- Borough \ Census Area Boundary
- Township
- Section

ALASKA LNG PROJECT		
Land Ownership - Mainline and Alternate Corridor (Kenai Peninsula Section)		
BOROUGH:	KENAI PENINSULA	DRAWN BY: CC
STATE:	ALASKA	CHECKED BY: JS
REV. NO.:	REVISION	DATE
0	ISSUED FOR REVIEW	2015-02-07
PRELIMINARY		
1:24,000	0 1/4 1/2 Miles	
DATE: 2015-02-07	PROJECTION: NAD83 STATEPLANE AK 4 5004 FEET	

PREPARED BY:

exp Energy Services Inc.

t: +1.907.868.1185 | f: +1.907.868.1846

3800 Centerpoint Dr. Suite 200

Anchorage, AK 99503

U.S.A.

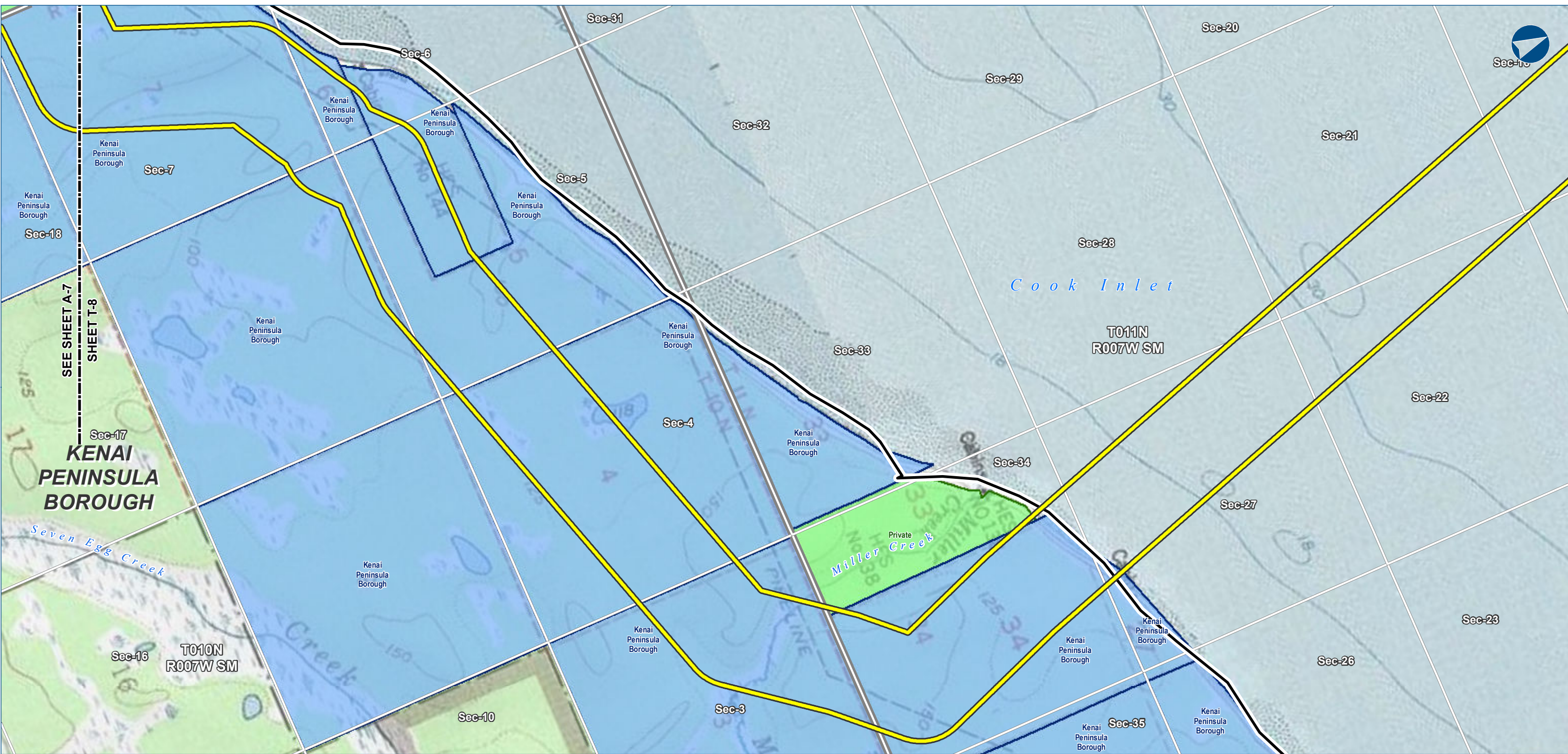
www.exp.com

• BUILDINGS • EARTH & ENVIRONMENT • ENERGY •

• INDUSTRIAL • INFRASTRUCTURE • SUSTAINABILITY •

DWG: LANDOWNER-A-KENAI_BASE-PRE-FEED

SHEET: A-7



The information contained herein is for informational or planning purposes only. It does not nor should it be deemed to be an offer, request or proposals for rights or occupation of any kind. The Alaska LNG Project Participants and their respective officers, employees and agents, make no warranty, implied or otherwise, nor accept any liability, as to the accuracy or completeness of the information contained in these documents, drawings or electronic files.



LEGEND

Study Corridor - 2,000 ft wide (+/-)

- Pre-FEED Rev A Base Corridor
- Pre-FEED Rev A Alternate Corridor

Easement

- Pipeline, Oil / Gas
- Road - Existing
- Trail - Existing
- Trail - Proposed

Managing Authority

- Federal Ownership
- State Ownership
- Municipal Ownership
- Private Ownership
- RS2477 Trail

- Primary Road
- Secondary Road
- Borough \ Census Area Boundary
- Township
- Section

ALASKA LNG PROJECT		
Land Ownership - Mainline and Alternate Corridor (Kenai Peninsula Section)		
BOROUGH:	KENAI PENINSULA	DRAWN BY: CC
STATE:	ALASKA	CHECKED BY: JS
REV. NO.:	REVISION	DATE
0	ISSUED FOR REVIEW	2015-02-07
PRELIMINARY		
1:24,000	0 1/4 1/2 Miles	
DATE: 2015-02-07	PROJECTION: NAD83 STATEPLANE AK 4 5004 FEET	

PREPARED BY:

exp Energy Services Inc.

t: +1.907.868.1185 | f: 1.907.868.1846

3800 Centerpoint Dr. Suite 200

Anchorage, AK 99503

U.S.A.

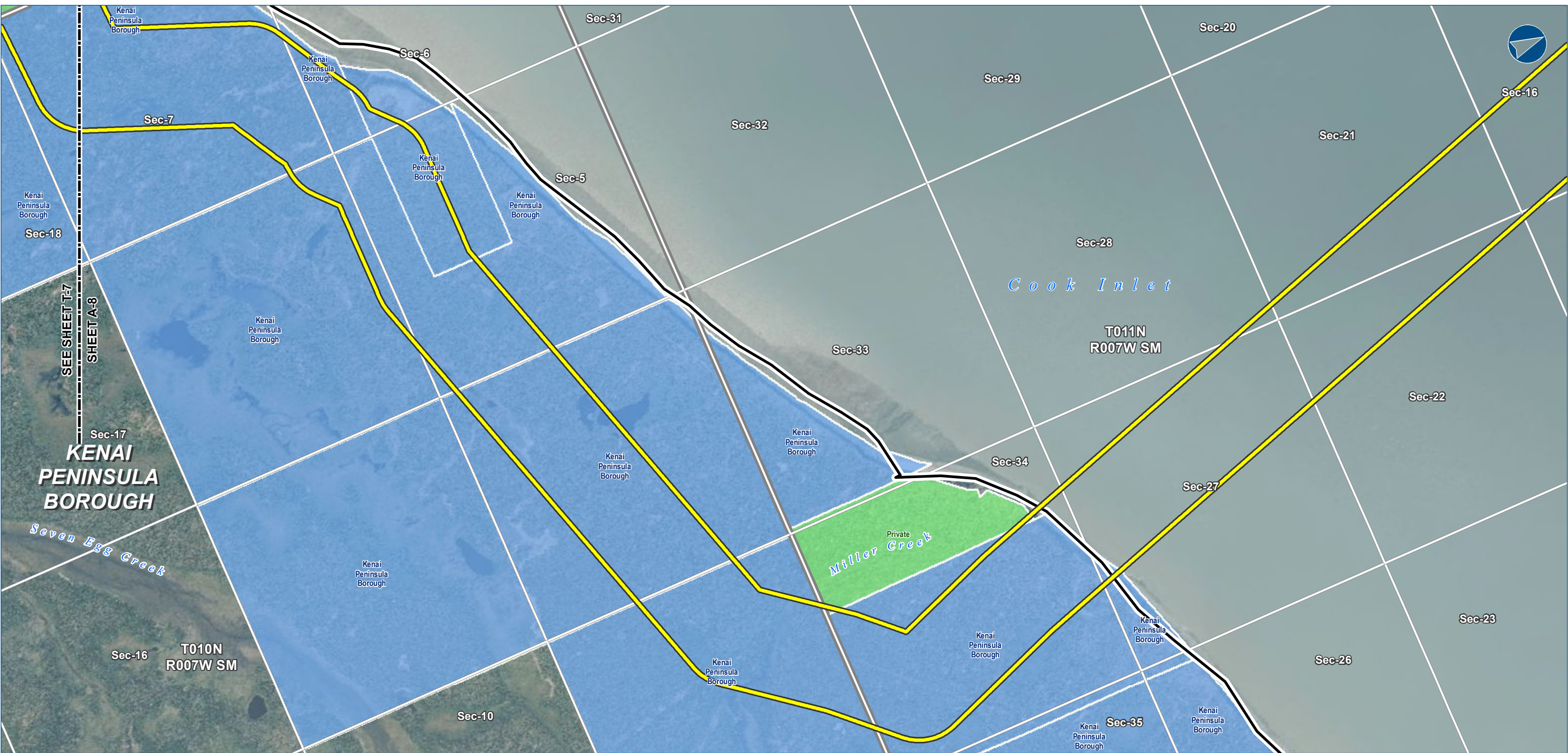
www.exp.com

• BUILDINGS • EARTH & ENVIRONMENT • ENERGY •

• INDUSTRIAL • INFRASTRUCTURE • SUSTAINABILITY •

DWG: LANDOWNER-T-KENAI_BASE-PRE-FEED

SHEET: T-8



The information contained herein is for informational or planning purposes only. It does not nor should it be deemed to be an offer, request or proposals for rights or occupation of any kind. The Alaska LNG Project Participants and their respective officers, employees and agents, make no warranty, implied or otherwise, nor accept any liability, as to the accuracy or completeness of the information contained in these documents, drawings or electronic files.



LEGEND

Study Corridor - 2,000 ft wide (+/-)

- Pre-FEED Rev A Base Corridor
- Pre-FEED Rev A Alternate Corridor

17b Easement

- Pipeline, Oil / Gas
- Road - Existing
- Trail - Existing
- Trail - Proposed

Managing Authority

- Federal Ownership
- State Ownership
- Municipal Ownership
- Private Ownership
- RS2477 Trail

- Primary Road
- Secondary Road
- Borough \ Census Area Boundary
- Township
- Section

ALASKA LNG PROJECT		
Land Ownership - Mainline and Alternate Corridor (Kenai Peninsula Section)		
BOROUGH:	KENAI PENINSULA	DRAWN BY: CC
STATE:	ALASKA	CHECKED BY: JS
REV. NO.:	REVISION	DATE
0	ISSUED FOR REVIEW	2015-02-07
PRELIMINARY		
1:24,000	0 1/4 1/2 Miles	
DATE: 2015-02-07	PROJECTION: NAD83 STATEPLANE AK 4 5004 FEET	

PREPARED BY:

exp Energy Services Inc.

t: +1.907.868.1185 | f: 1.907.868.1846

3800 Centerpoint Dr. Suite 200

Anchorage, AK 99503

U.S.A.

www.exp.com

• BUILDINGS • EARTH & ENVIRONMENT • ENERGY •

• INDUSTRIAL • INFRASTRUCTURE • SUSTAINABILITY •

DWG: LANDOWNER-A-KENAI_BASE-PRE-FEED SHEET: A-8