

Alaska LNG Project

Mapping Depicting Land Ownership
GTP - LNG Sites


Resource Report 8
Appendix A

The information contained herein is for informational or planning purposes only. It does not nor should it be deemed to be an offer, request or proposals for rights or occupation of any kind. The Alaska LNG Project Participants and their respective officers, employees and agents, make no warranty, implied or otherwise, nor accept any liability, as to the accuracy or completeness of the information contained in these documents, drawings or electronic files.

ALASKA LNG PROJECT			
Mapping Depicting Land Ownership - GTP - LNG Sites			
BOROUGH:	-	DRAWN BY:	CC
STATE:	ALASKA	CHECKED BY:	JS
REV. NO.:	REVISION	DATE	
0	ISSUED FOR REVIEW	2015-02-07	
PRELIMINARY			

PREPARED BY:
exp Energy Services Inc.

t: +1.850.385.5441 | f: +1.850.385.5523
1300 Metropolitan Blvd.
Tallahassee, FL 32308
U.S.A.
www.exp.com



BUILDINGS • EARTH & ENVIRONMENT • ENERGY •
INDUSTRIAL • INFRASTRUCTURE • SUSTAINABILITY •

DATE: 2015-02-07	PROJECTION: NAD83 STATE PLANE AK 4 5004 FEET	DWG: PRE-FEED-GTP-LNG-COVER	SHEET: GTP-LNG-COVER
------------------	--	-----------------------------	----------------------



A r c t i c
O c e a n

Pg. 1
Pg. 2

NORTH
SLOPE
BOROUGH

The information contained herein is for informational or planning purposes only. It does not nor should it be deemed to be an offer, request or proposals for rights or occupation of any kind. The Alaska LNG Project Participants and their respective officers, employees and agents, make no warranty, implied or otherwise, nor accept any liability, as to the accuracy or completeness of the information contained in these documents, drawings or electronic files.

ALASKA LNG PROJECT		
Land Ownership Resources - GTP Site		
BOROUGH:	NORTH SLOPE	DRAWN BY: CC
STATE:	ALASKA	CHECKED BY: JS
REV. NO.:	REVISION	DATE
0	ISSUED FOR REVIEW	2015-02-06
PRELIMINARY		

PREPARED BY:

exp Energy Services Inc.

t: +1.850.385.5441 | f: +1.850.385.5523
1300 Metropolitan Blvd.
Tallahassee, FL 32308
U.S.A.
www.exp.com

• BUILDINGS • EARTH & ENVIRONMENT • ENERGY •
• INDUSTRIAL • INFRASTRUCTURE • SUSTAINABILITY •

The information contained herein is for informational or planning purposes only. It does not nor should it be deemed to be an offer, request or proposals for rights or occupation of any kind. The Alaska LNG Project Participants and their respective officers, employees and agents, make no warranty, implied or otherwise, nor accept any liability, as to the accuracy or completeness of the information contained in these documents, drawings or electronic files.

PREPARED BY:

exp Energy Services Inc.

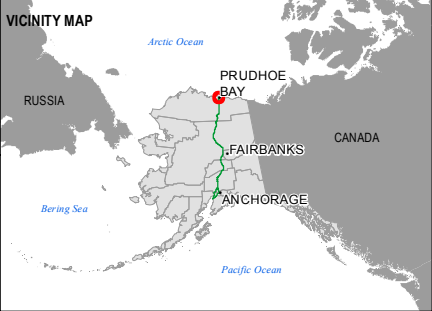
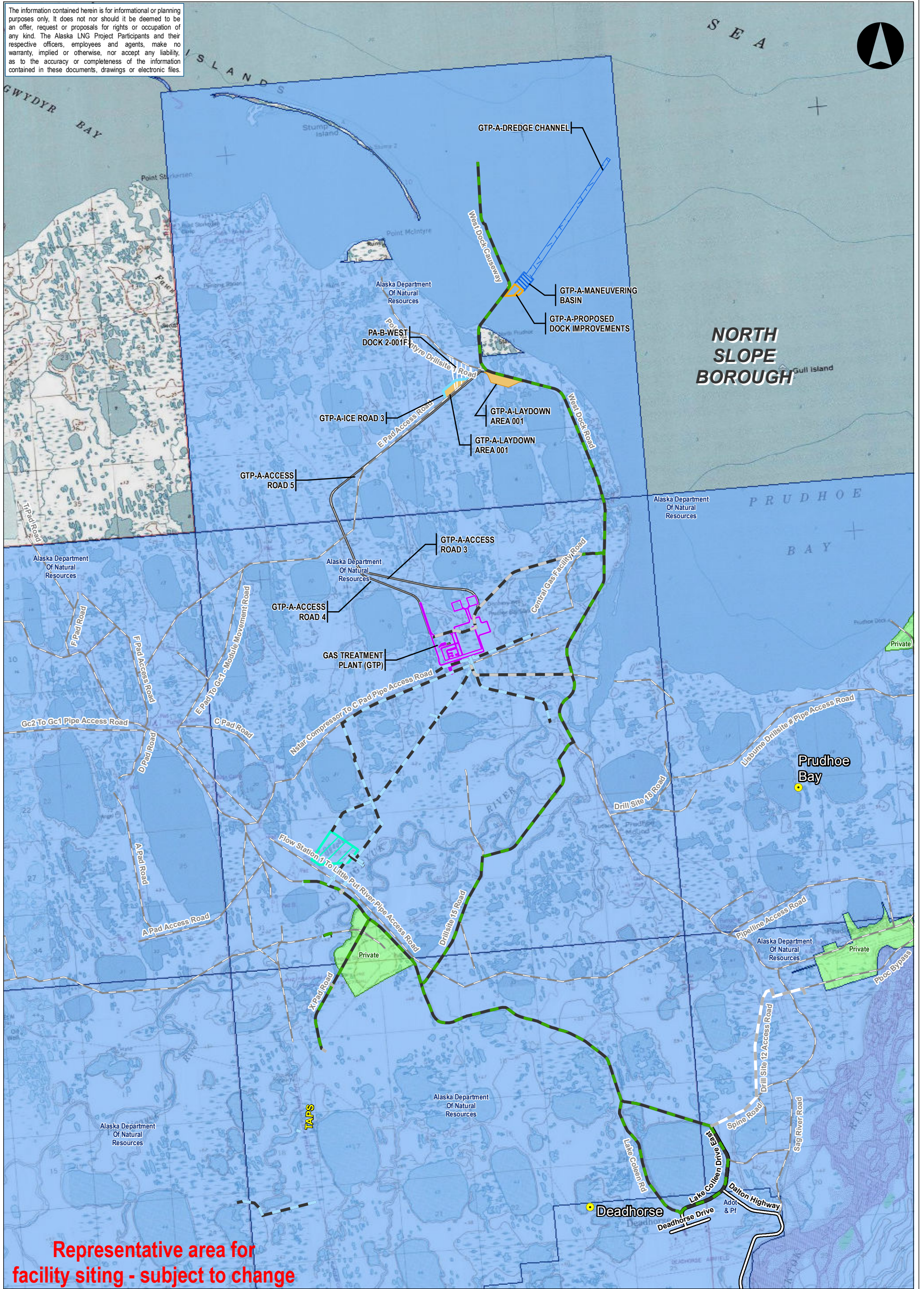
t: +1.907.868.1185 | f: 1.907.868.1846
3800 Centerpoint Dr. Suite 200
Anchorage, AK 99503
U.S.A.

www.exp.com



• BUILDINGS • EARTH & ENVIRONMENT • ENERGY •
• INDUSTRIAL • INFRASTRUCTURE • SUSTAINABILITY

The information contained herein is for informational or planning purposes only. It does not nor should it be deemed to be an offer, request or proposals for rights or occupation of any kind. The Alaska LNG Project Participants and their respective officers, employees and agents, make no warranty, implied or otherwise, nor accept any liability, as to the accuracy or completeness of the information contained in these documents, drawings or electronic files.



LEGEND

Proposed GTP Site

Proposed Reservoir

Federal Ownership

State Ownership

Municipal Ownership

Private Ownership

Primary Road

Secondary Road

Primary

Primary, Gravel

Temporary, Gravel

Temporary, Ice road

Pipeline, Oil / Gas

Road - Existing

Trail - Existing

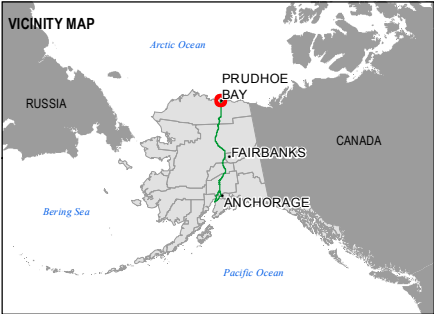
Trail - Proposed

RS2477 Trail

ALASKA LNG PROJECT Land Ownership Resources - GTP Facility			
BOROUGH: NORTH SLOPE		DRAWN BY: CC	
STATE: ALASKA		CHECKED BY: JS	
REV. NO.		REVISION	
0		ISSUED FOR REVIEW	
		2015-02-07	
PRELIMINARY			
1:75,000		0 1 2 Miles	
DATE: 2015-02-07		PROJECTION: NAD83 STATEPLANE AK 4 5004 FEET	

PREPARED BY: exp Energy Services Inc.	
t: +1.907.868.1185 f: 1.907.868.1846 3800 Centerpoint Dr. Suite 200 Anchorage, AK 99503 U.S.A. www.exp.com	
• BUILDINGS • EARTH & ENVIRONMENT • ENERGY • • INDUSTRIAL • INFRASTRUCTURE • SUSTAINABILITY •	
DWG: LANDOWNER-T-GTP-1	SHEET: 1

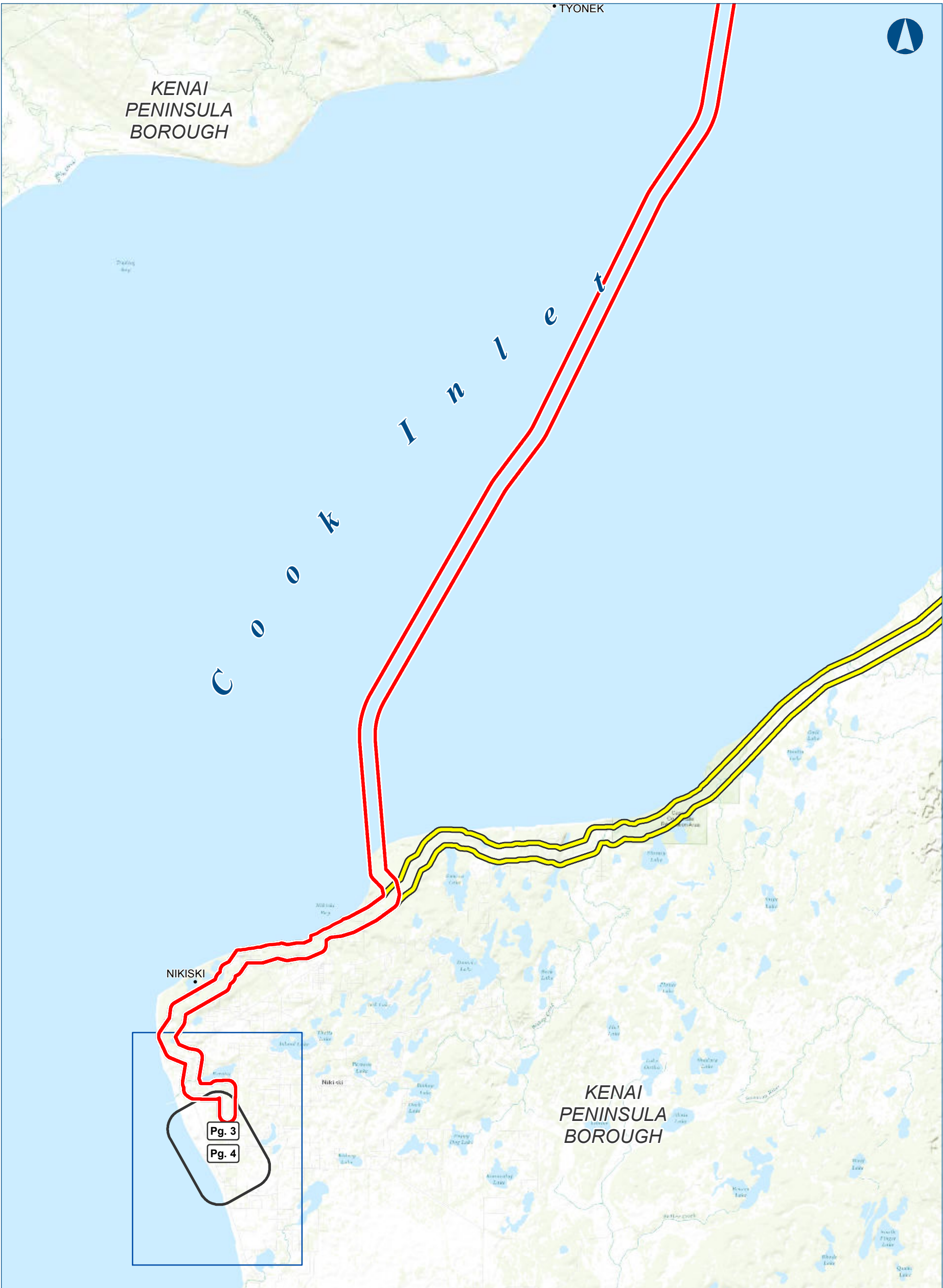
The information contained herein is for informational or planning purposes only. It does not nor should it be deemed to be an offer, request or proposals for rights or occupation of any kind. The Alaska LNG Project Participants and their respective officers, employees and agents, make no warranty, implied or otherwise, nor accept any liability, as to the accuracy or completeness of the information contained in these documents, drawings or electronic files.



LEGEND		
Managing Authority	Access Road	

ALASKA LNG PROJECT Land Ownership Resources - GTP Facility		
BOROUGH: NORTH SLOPE	DRAWN BY: CC	
STATE: ALASKA	CHECKED BY: JS	
REV. NO.	REVISION	DATE
0	ISSUED FOR REVIEW	2015-02-07
PRELIMINARY		
1:75,000	0 1 2 Miles	
DATE: 2015-02-07	PROJECTION: NAD83 STATEPLANE AK 4 5004 FEET	

PREPARED BY: exp Energy Services Inc. t: +1.907.868.1185 f: 1.907.868.1846 3800 Centerpoint Dr. Suite 200 Anchorage, AK 99503 U.S.A. www.exp.com	
• BUILDINGS • EARTH & ENVIRONMENT • ENERGY • • INDUSTRIAL • INFRASTRUCTURE • SUSTAINABILITY •	
DWG: LANDOWNER-A-GTP-2	SHEET: 2



The information contained herein is for informational or planning purposes only. It does not nor should it be deemed to be an offer, request or proposals for rights or occupation of any kind. The Alaska LNG Project Participants and their respective officers, employees and agents, make no warranty, implied or otherwise, nor accept any liability, as to the accuracy or completeness of the information contained in these documents, drawings or electronic files.


ALASKA LNG PROJECT			
Land Ownership Resources - LNG Site			
BOROUGH:	KENAI PENINSULA	DRAWN BY:	CC
STATE:	ALASKA	CHECKED BY:	JS
REV. NO.:	REVISION	DATE	
0	ISSUED FOR REVIEW	2015-02-06	
PRELIMINARY			

PREPARED BY:

exp Energy Services Inc.

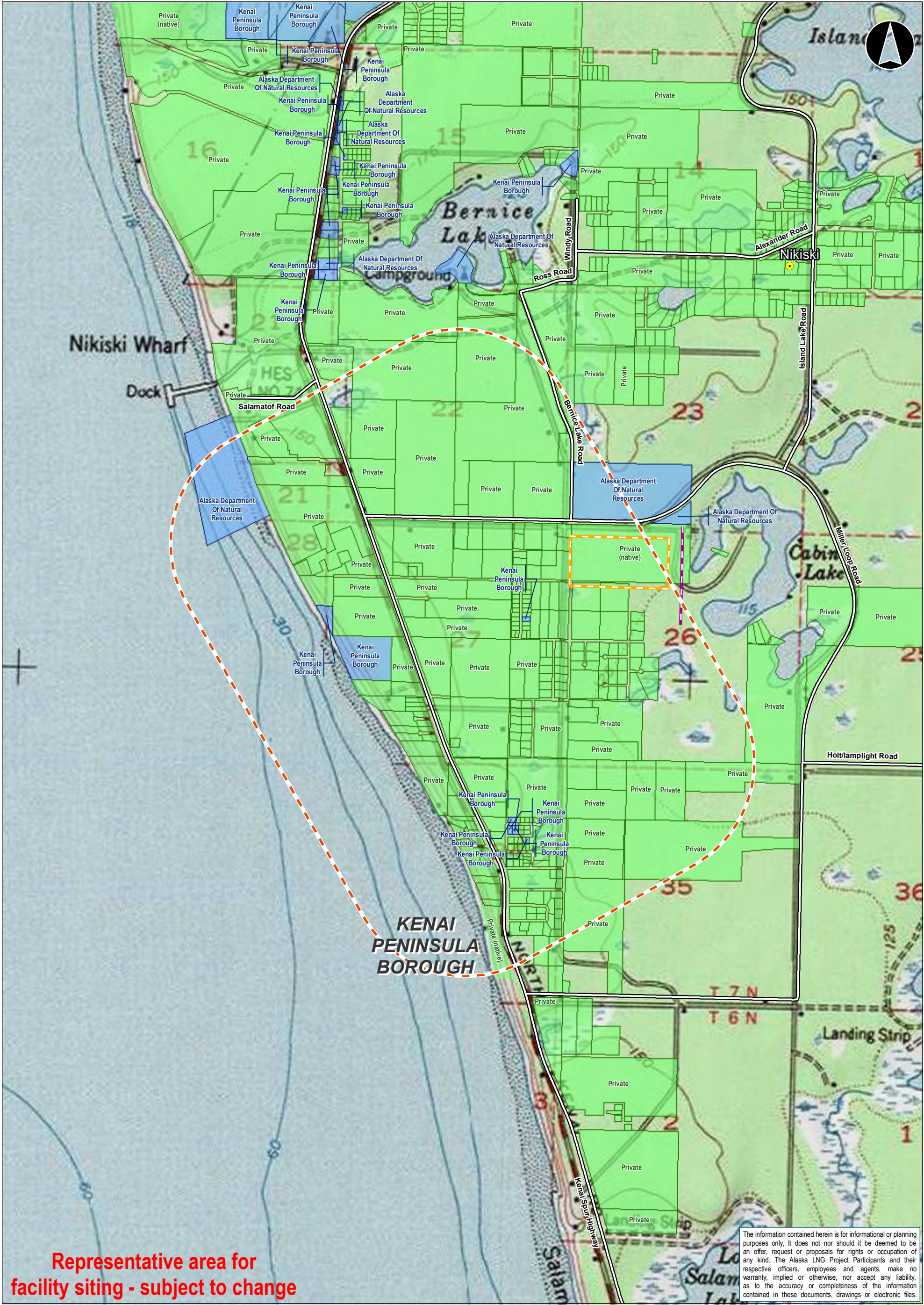
t: +1.850.385.5441 | f: +1.850.385.5523
1300 Metropolitan Blvd.
Tallahassee, FL 32308
U.S.A.

www.exp.com



• BUILDINGS • EARTH & ENVIRONMENT • ENERGY •
• INDUSTRIAL • INFRASTRUCTURE • SUSTAINABILITY •

DATE:	2015-02-06	PROJECTION:	NAD83 STATE PLANE AK 4 5004 FEET	DWG:	PRE-FEED-LNG-INDEX	SHEET:	INDEX-2
-------	------------	-------------	----------------------------------	------	--------------------	--------	---------



Representative area for
facility siting - subject to change

The information contained herein is for informational or planning purposes only. It does not nor should it be deemed to be an offer, request or proposals for rights or occupation of any kind. The Alaska LNG Project Participants and their respective officers, employees and agents, make no warranty, implied or otherwise, nor accept any liability, as to the accuracy or completeness of the information contained in these documents, drawings or electronic files.



LEGEND	
	Places
	Liquefaction Facility Area
Managing Authority	
	Federal Ownership
	State Ownership
	Municipal Ownership
	Private Ownership
17b Easement	
	Primary Road
	Secondary Road
	Pipeline, Oil / Gas
	Road - Existing
	Trail - Existing
	Trail - Proposed
	RS2477 Trail

ALASKA LNG PROJECT Land Ownership Resources - Liquefaction Facility		
BOROUGH:	KENAI PENINSULA	DRAWN BY: CC
STATE:	ALASKA	CHECKED BY: JS
REV. NO.	REVISION	DATE
0	ISSUED FOR REVIEW	2015-02-07
PRELIMINARY		
1:24,000	0 0.3 0.6 Miles	
DATE: 2015-02-07	PROJECTION: NAD83 STATEPLANE AK 4 5004 FEET	

PREPARED BY:

exp Energy Services Inc.

t: +1.907.868.1185 | f: +1.907.868.1846

3800 Centerpoint Dr. Suite 200

Anchorage, AK 99503

U.S.A.

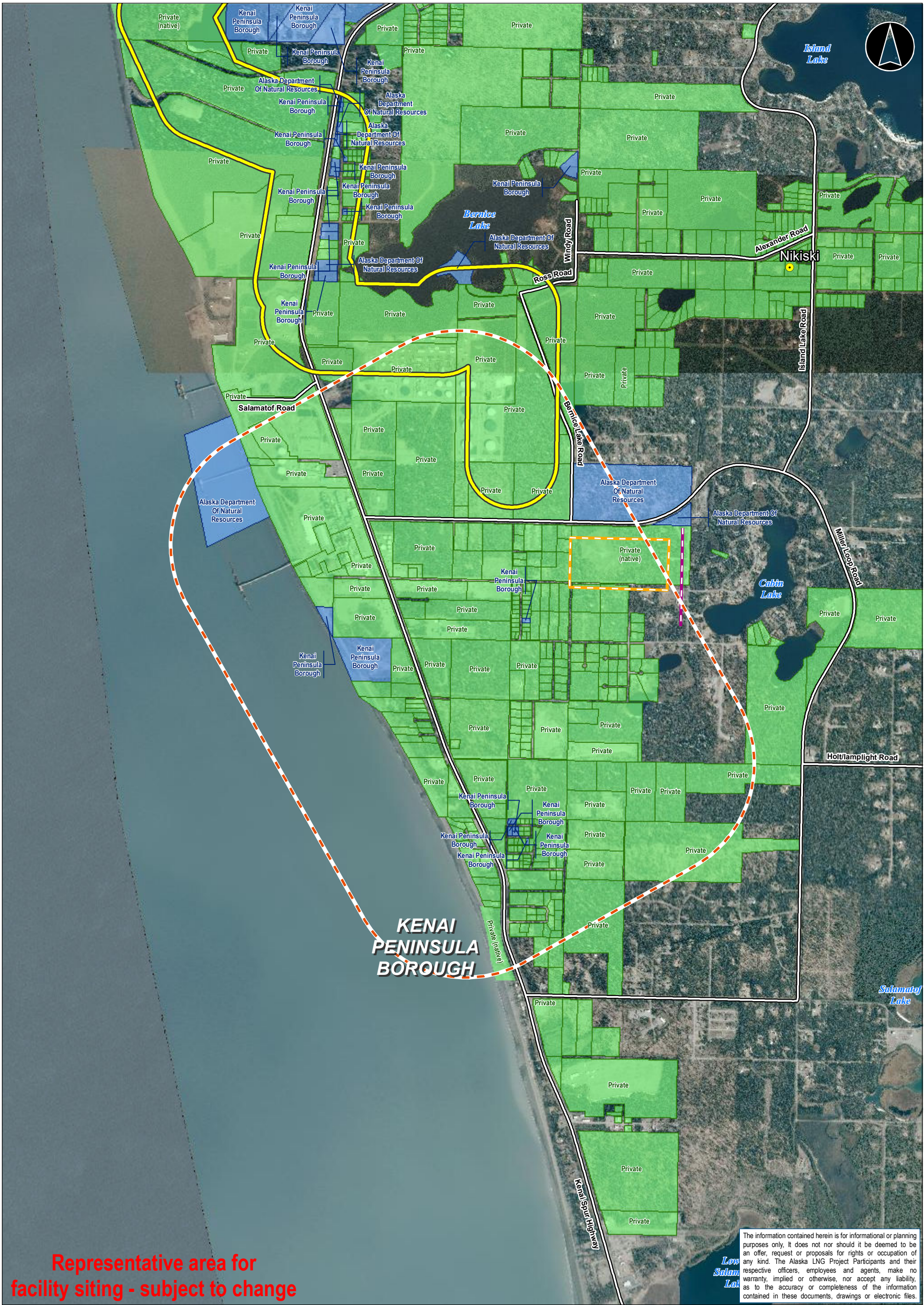
www.exp.com

• BUILDINGS • EARTH & ENVIRONMENT • ENERGY •

INDUSTRIAL • INFRASTRUCTURE • SUSTAINABILITY

DWG: LANDOWNER-T-LIQ-3

SHEET: 3



Representative area for
facility siting - subject to change

The information contained herein is for informational or planning purposes only. It does not nor should it be deemed to be an offer, request or proposals for rights or occupation of any kind. The Alaska LNG Project Participants and their respective officers, employees and agents, make no warranty, implied or otherwise, nor accept any liability, as to the accuracy or completeness of the information contained in these documents, drawings or electronic files.



LEGEND	
	Places
	Liquefaction Facility Area
	Federal Ownership
	State Ownership
	Municipal Ownership
	Private Ownership
	Primary Road
	Secondary Road
	Pipeline, Oil / Gas
	Road - Existing
	Trail - Existing
	Trail - Proposed
	RS2477 Trail

ALASKA LNG PROJECT Land Ownership Resources - Liquefaction Facility		
BOROUGH:	KENAI PENINSULA	DRAWN BY: CC
STATE:	ALASKA	CHECKED BY: JS
REV. NO.	REVISION	DATE
0	ISSUED FOR REVIEW	2015-02-07
PRELIMINARY		
1:24,000	0	0.3 0.6 Miles
DATE:	2015-02-07	PROJECTION: NAD83 STATEPLANE AK 4 5004 FEET

PREPARED BY: exp Energy Services Inc.	
t: +1.907.868.1185 f: 1.907.868.1846 3800 Centerpoint Dr. Suite 200 Anchorage, AK 99503 U.S.A. www.exp.com	
	
• BUILDINGS • EARTH & ENVIRONMENT • ENERGY • • INDUSTRIAL • INFRASTRUCTURE • SUSTAINABILITY •	
DWG: LANDOWNER-A-LIQ-4	SHEET: 4

The information contained herein is for informational or planning purposed only. It does not nor should it be deemed to be an offer, request or proposals for rights or occupation of any kind. The Alaska LNG Project Participants and their respective officers, employees and agents, make no warranty, implied or otherwise, nor accept any liability, as to the accuracy or completeness of the information contained in these documents, drawings or electronic files.

PREPARED BY:

exp Energy Services Inc.

t: +1.907.868.1185 | f: +1.907.868.1846
3800 Centerpoint Dr. Suite 200
Anchorage, AK 99503
U.S.A.

www.exp.com



- BUILDINGS • EARTH & ENVIRONMENT • ENERGY •
- INDUSTRIAL • INFRASTRUCTURE • SUSTAINABILITY •