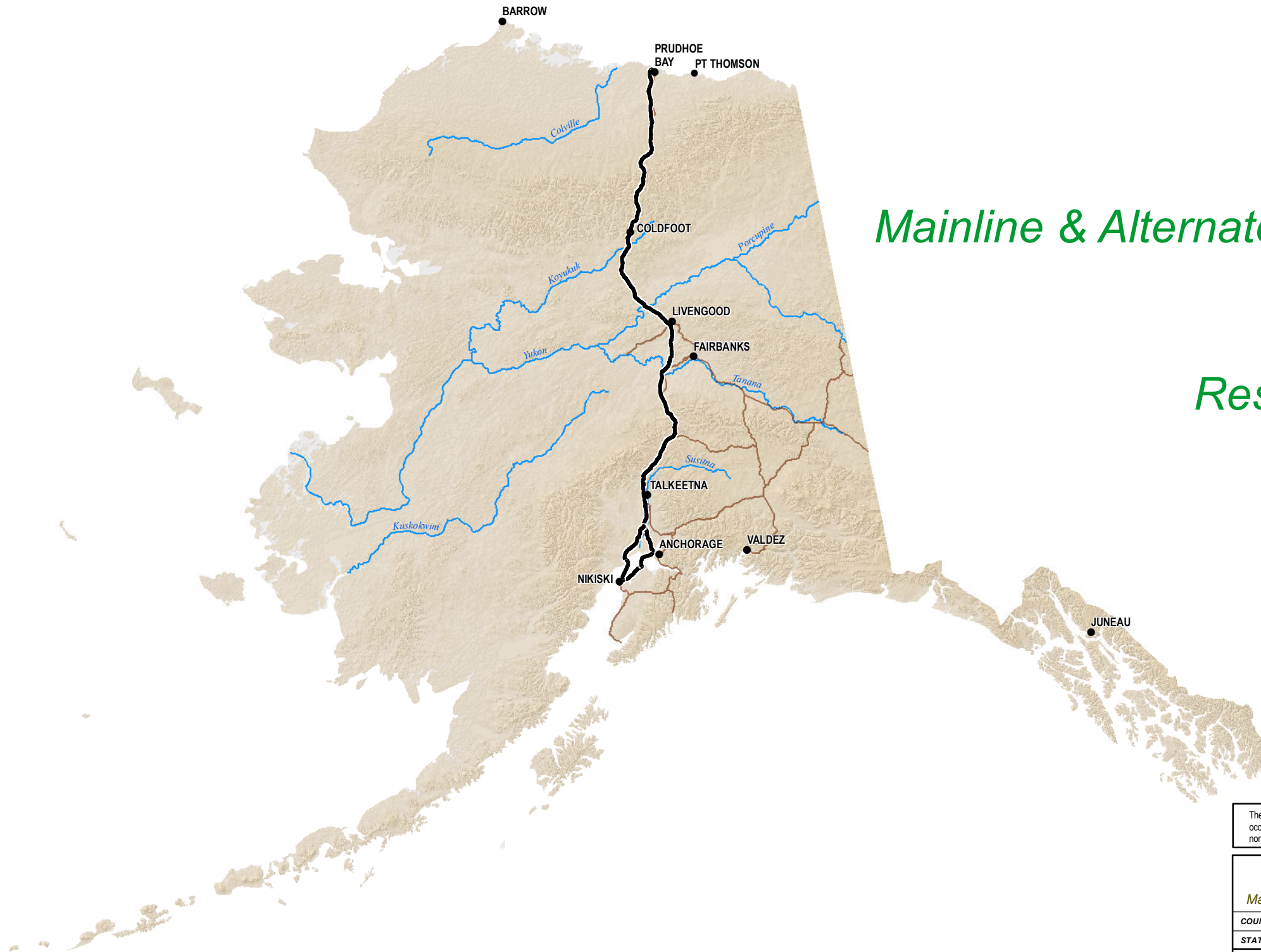


Alaska LNG Project

Wetland Maps Mainline & Alternate Corridor (Kenai Peninsula)

Resource Report 2, Appendix F



The information contained herein is for informational or planning purposes only. It does not nor should it be deemed to be an offer, request or proposals for rights or occupation of any kind. The Alaska LNG Project Participants and their respective officers, employees and agents, make no warranty, implied or otherwise, nor accept any liability, as to the accuracy or completeness of the information contained in these documents, drawings or electronic files.

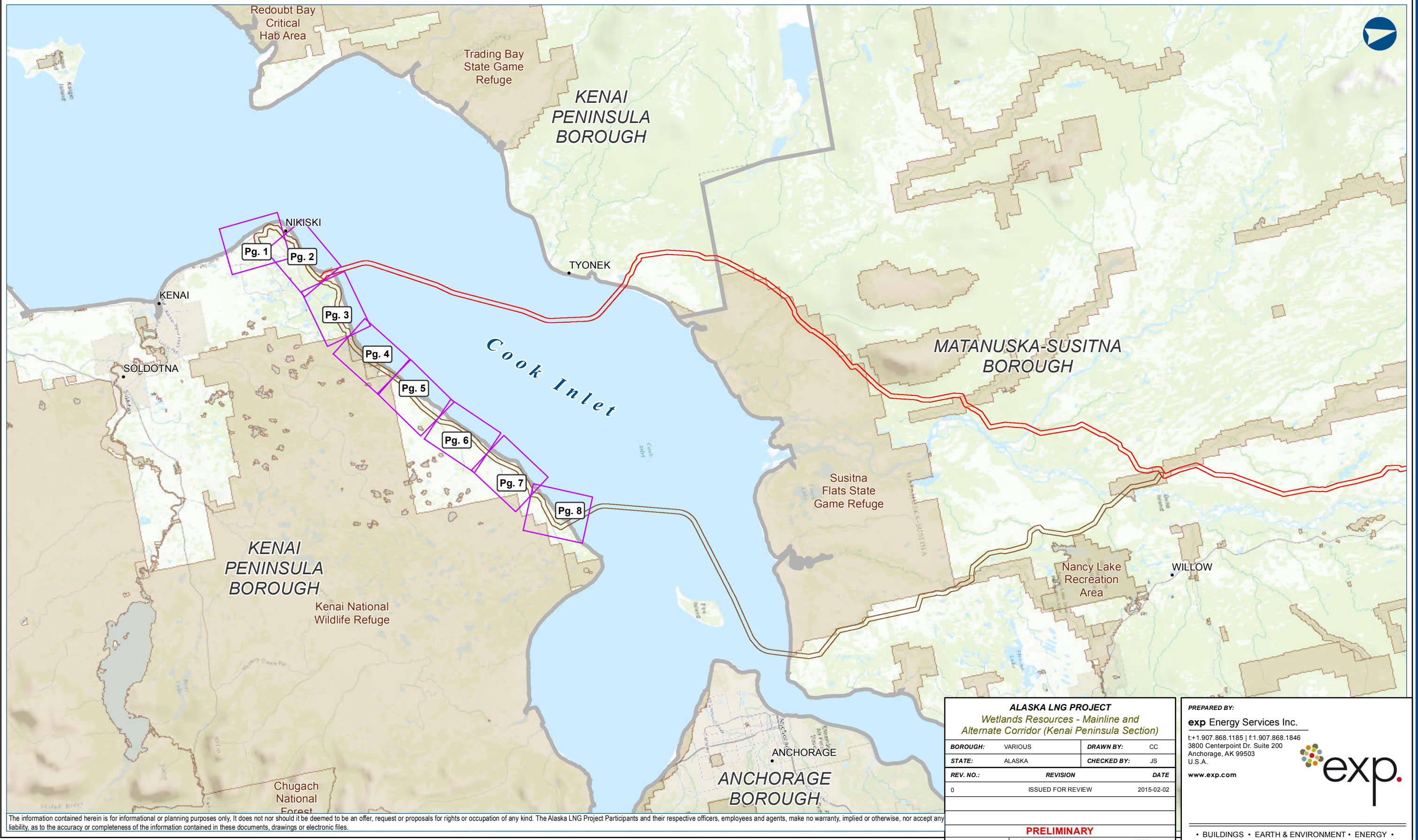
ALASKA LNG PROJECT		
Wetland Maps - Mainline & Alternate Corridor (Kenai Peninsula)		
COUNTY:	-	DRAWN BY: CC
STATE:	ALASKA	CHECKED BY: JS
REV. NO.:	REVISION	DATE
0	ISSUED FOR REVIEW	2015-02-04
PRELIMINARY		
1:10,000,000	0 100 200 Miles	
DATE: 2015-02-04	PROJECTION: NAD83 STATEPLANE AK 4 5004 FEET	

PREPARED BY:
exp Energy Services Inc.
t: +1.907.868.1185 | f: 1.907.868.1846
3800 Centerpoint Dr. Suite 200
Anchorage, AK 99503
U.S.A.
www.exp.com



• BUILDINGS • EARTH & ENVIRONMENT • ENERGY •
• INDUSTRIAL • INFRASTRUCTURE • SUSTAINABILITY •


DWG: COVER-A-MASTER-PRE-FEED SHEET: COVER SHEET



The information contained herein is for informational or planning purposes only. It does not nor should it be deemed to be an offer, request or proposals for rights or occupation of any kind. The Alaska LNG Project Participants and their respective officers, employees and agents, make no warranty, implied or otherwise, nor accept any liability, as to the accuracy or completeness of the information contained in these documents, drawings or electronic files.

ALASKA LNG PROJECT		
Wetlands Resources - Mainline and Alternate Corridor (Kenai Peninsula Section)		
BOROUGH:	VARIOUS	DRAWN BY: CC
STATE:	ALASKA	CHECKED BY: JS
REV. NO.:	REVISION	DATE
0	ISSUED FOR REVIEW	2015-02-02
PRELIMINARY		
1:500,000	0 5 10 Miles	
DATE: 2015-02-02	PROJECTION: NAD83 STATE PLANE AK 4 5004 FEET	

PREPARED BY:
exp Energy Services Inc.
 t: +1.907.868.1185 | f: 1.907.868.1846
 3800 Centerpoint Dr. Suite 200
 Anchorage, AK 99503
 U.S.A.
www.exp.com




• BUILDINGS • EARTH & ENVIRONMENT • ENERGY •
 • INDUSTRIAL • INFRASTRUCTURE • SUSTAINABILITY •

DWG: PRE_FEED_REVA-INDEX SHEET: ALT-INDEX-6

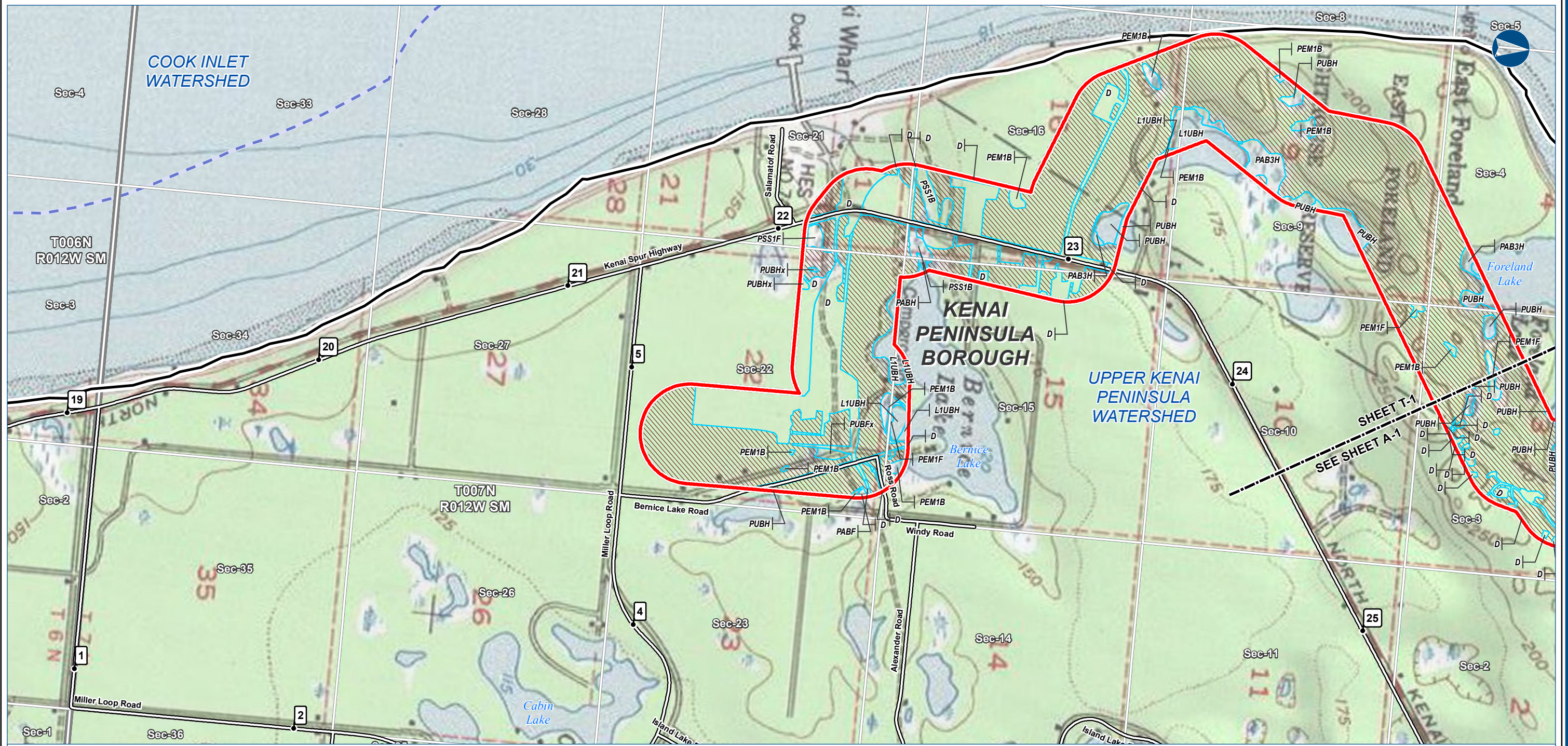
The information contained herein is for informational or planning purposes only. It does not nor should it be deemed to be an offer, request or proposals for rights or occupation of any kind. The Alaska LNG Project Participants and their respective officers, employees and agents, make no warranty, implied or otherwise, nor accept any liability, as to the accuracy or completeness of the information contained in these documents, drawings or electronic files.

PREPARED BY:
exp Energy Services Inc.
t: +1.907.868.1185 | f: 1.907.868.1846
3800 Centerpoint Dr. Suite 200
Anchorage, AK 99503
U.S.A.
www.exp.com



• BUILDINGS • EARTH & ENVIRONMENT • ENERGY •
• INDUSTRIAL • INFRASTRUCTURE • SUSTAINABILITY •

DWG: PRE_FEED_REVA-NOTES SHEET: ALT-NOTES-1



The information contained herein is for informational or planning purposes only. It does not nor should it be deemed to be an offer, request or proposals for rights or occupation of any kind. The Alaska LNG Project Participants and their respective officers, employees and agents, make no warranty, implied or otherwise, nor accept any liability, as to the accuracy or completeness of the information contained in these documents, drawings or electronic files.



LEGEND

Study Corridor - 2,000 ft wide (+/-)

- Pre-FEED Rev A Base Corridor
- Pre-FEED Rev A Alternate Corridor
- Primary Road
- Secondary Road
- Wetland Field Confirmation Location
- Watershed Boundary
- Wetland Area (Cowardin Classification)
- Upland Area
- Borough \ Census Area Boundary
- Township
- Section

ALASKA LNG PROJECT
Wetland Resources - Mainline and Alternate Corridor (Kenai Peninsula Section)

BOROUGH:	KENAI PENINSULA	DRAWN BY:	CC
STATE:	ALASKA	CHECKED BY:	JS
REV. NO.:	0	REVISION	ISSUED FOR REVIEW
		DATE	2015-02-02

PRELIMINARY

1:24,000 0 1/4 1/2 Miles

DATE: 2015-02-02 PROJECTION: NAD83 STATEPLANE AK 4 5004 FEET

PREPARED BY:
exp Energy Services Inc.
t: +1.907.868.1185 | f: +1.907.868.1846
3800 Centerpoint Dr. Suite 200
Anchorage, AK 99503
U.S.A.
www.exp.com

• BUILDINGS • EARTH & ENVIRONMENT • ENERGY •
• INDUSTRIAL • INFRASTRUCTURE • SUSTAINABILITY •

DWG: WETLANDS-T-KENAI_BASE-PRE-FEED SHEET: T-1



The information contained herein is for informational or planning purposes only. It does not nor should it be deemed to be an offer, request or proposals for rights or occupation of any kind. The Alaska LNG Project Participants and their respective officers, employees and agents, make no warranty, implied or otherwise, nor accept any liability, as to the accuracy or completeness of the information contained in these documents, drawings or electronic files.



LEGEND

- Study Corridor - 2,000 ft wide (+/-)
- Pre-FEED Rev A Base Corridor
- Pre-FEED Rev A Alternate Corridor
- Primary Road
- Secondary Road
- Wetland Field Confirmation Location
- Watershed Boundary
- Wetland Area (Cowardin Classification)
- Upland Area
- Borough \ Census Area Boundary
- Township
- Section

ALASKA LNG PROJECT
Wetland Resources - Mainline and Alternate Corridor (Kenai Peninsula Section)

BOROUGH:	KENAI PENINSULA	DRAWN BY:	CC
STATE:	ALASKA	CHECKED BY:	JS
REV. NO.:	0	REVISION	ISSUED FOR REVIEW
		DATE	2015-02-02

PRELIMINARY

1:24,000 0 1/4 1/2 Miles

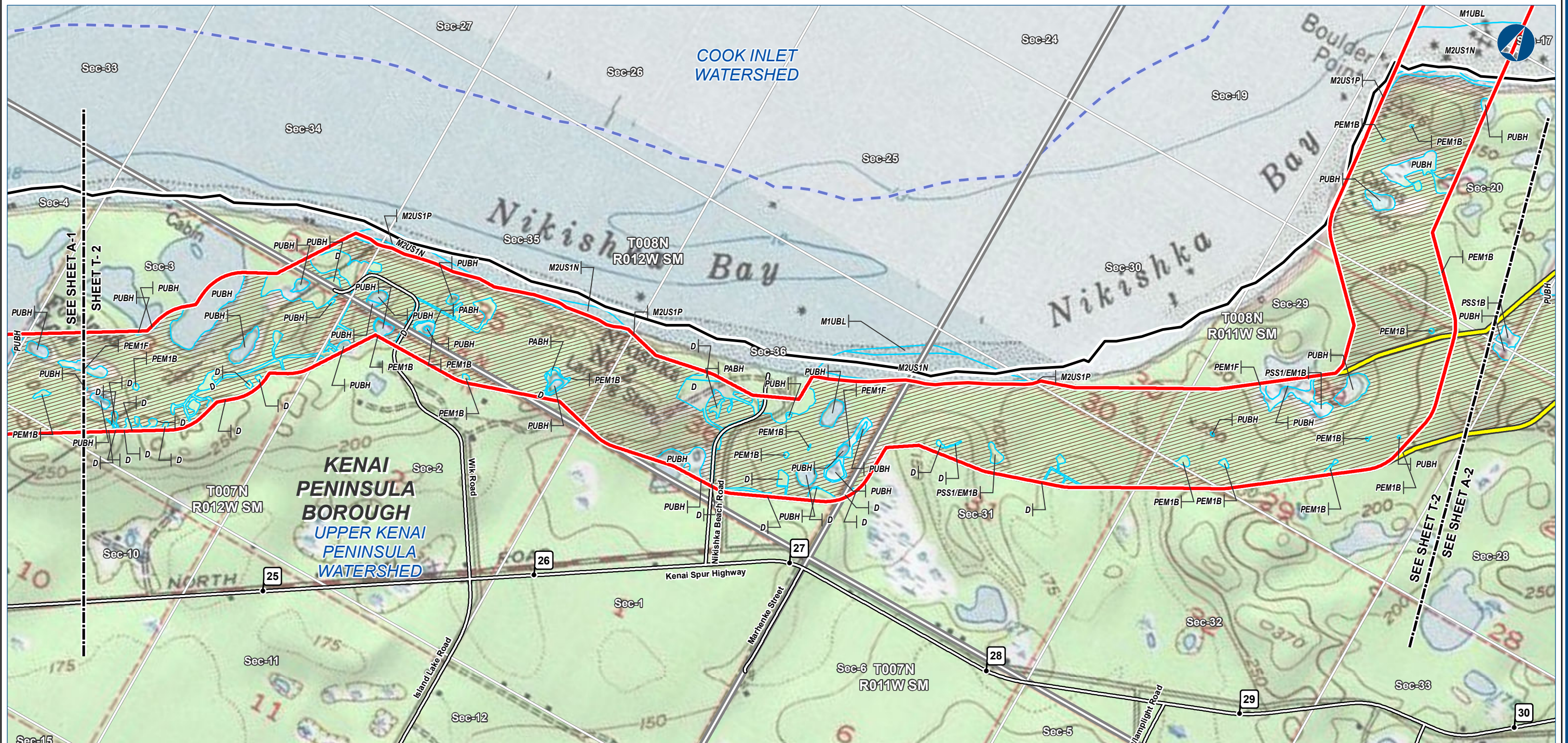
DATE: 2015-02-02 PROJECTION: NAD83 STATEPLANE AK 4 5004 FEET

PREPARED BY:
exp Energy Services Inc.
t: +1.907.868.1185 | f: 1.907.868.1846
3800 Centerpoint Dr. Suite 200
Anchorage, AK 99503
U.S.A.
www.exp.com

exp.

• BUILDINGS • EARTH & ENVIRONMENT • ENERGY •
• INDUSTRIAL • INFRASTRUCTURE • SUSTAINABILITY •

DWG: WETLANDS-A-KENAI_BASE-PRE-FEED SHEET: A-1



The information contained herein is for informational or planning purposes only. It does not nor should it be deemed to be an offer, request or proposals for rights or occupation of any kind. The Alaska LNG Project Participants and their respective officers, employees and agents, make no warranty, implied or otherwise, nor accept any liability, as to the accuracy or completeness of the information contained in these documents, drawings or electronic files.



LEGEND

Study Corridor - 2,000 ft wide (+/-)

- Pre-FEED Rev A Base Corridor
- Pre-FEED Rev A Alternate Corridor

Primary Road
Secondary Road

- Wetland Field Confirmation Location
- Watershed Boundary
- Wetland Area (Cowardin Classification)
- Upland Area
- Borough \ Census Area Boundary
- Township
- Section

ALASKA LNG PROJECT
Wetland Resources - Mainline and Alternate Corridor (Kenai Peninsula Section)

BOROUGH:	KENAI PENINSULA	DRAWN BY:	CC
STATE:	ALASKA	CHECKED BY:	JS
REV. NO.:	REVISION	DATE	
0	ISSUED FOR REVIEW	2015-02-02	

PRELIMINARY

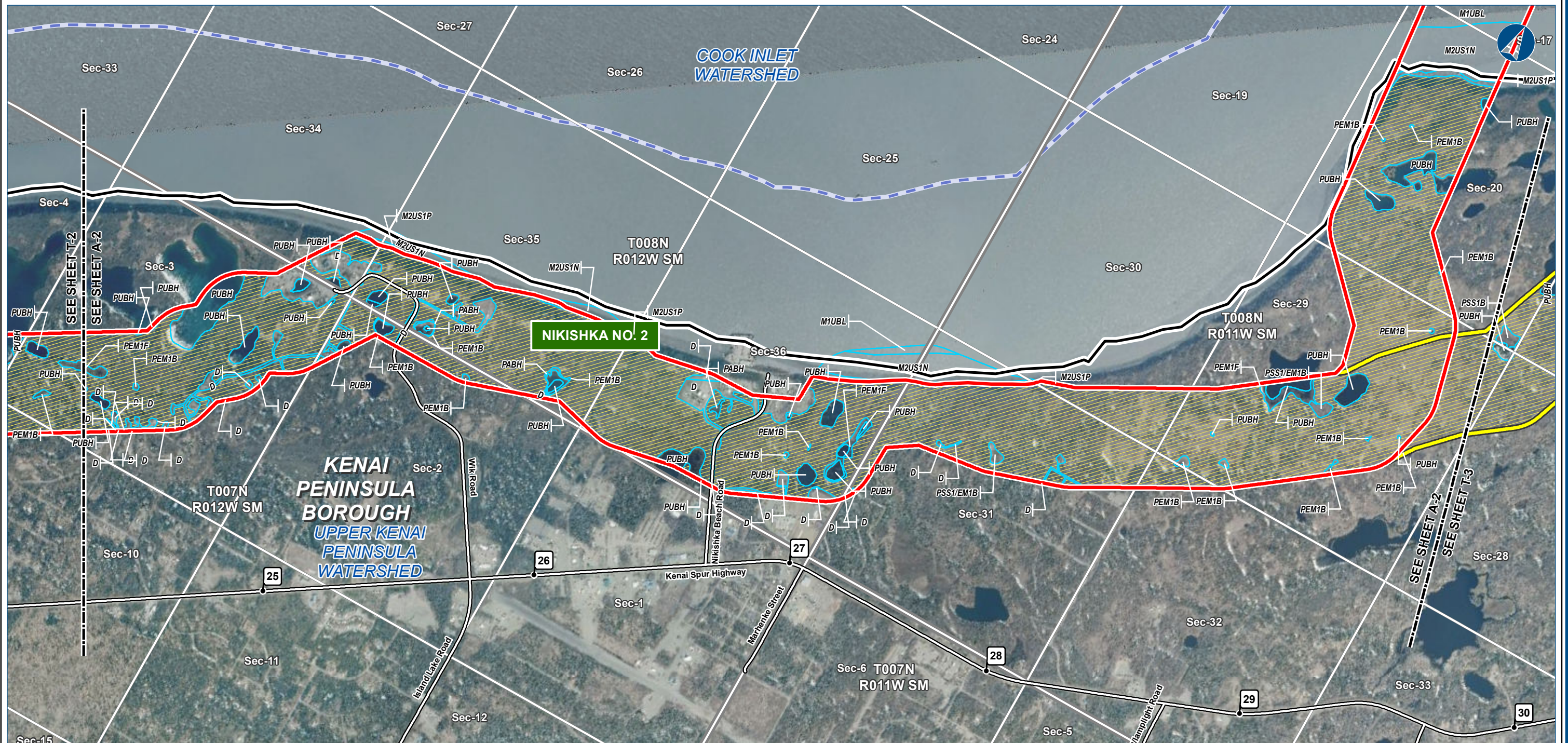
1:24,000 0 1/4 1/2 Miles

DATE: 2015-02-02 PROJECTION: NAD83 STATEPLANE AK 4 5004 FEET

PREPARED BY:
exp Energy Services Inc.
t: +1.907.868.1185 | f: +1.907.868.1846
3800 Centerpoint Dr. Suite 200
Anchorage, AK 99503
U.S.A.
www.exp.com

• BUILDINGS • EARTH & ENVIRONMENT • ENERGY •
• INDUSTRIAL • INFRASTRUCTURE • SUSTAINABILITY •

DWG: WETLANDS-T-KENAI_BASE-PRE-FEED SHEET: T-2



The information contained herein is for informational or planning purposes only. It does not nor should it be deemed to be an offer, request or proposals for rights or occupation of any kind. The Alaska LNG Project Participants and their respective officers, employees and agents, make no warranty, implied or otherwise, nor accept any liability, as to the accuracy or completeness of the information contained in these documents, drawings or electronic files.



LEGEND

Study Corridor - 2,000 ft wide (+/-)

- Pre-FEED Rev A Base Corridor
- Pre-FEED Rev A Alternate Corridor
- Primary Road
- Secondary Road
- Wetland Field Confirmation Location
- Watershed Boundary
- Wetland Area (Cowardin Classification)
- Upland Area
- Borough \ Census Area Boundary
- Township
- Section

ALASKA LNG PROJECT
Wetland Resources - Mainline and Alternate Corridor (Kenai Peninsula Section)

BOROUGH:	KENAI PENINSULA	DRAWN BY:	CC
STATE:	ALASKA	CHECKED BY:	JS
REV. NO.:	0	REVISION:	ISSUED FOR REVIEW
		DATE:	2015-02-02

PRELIMINARY

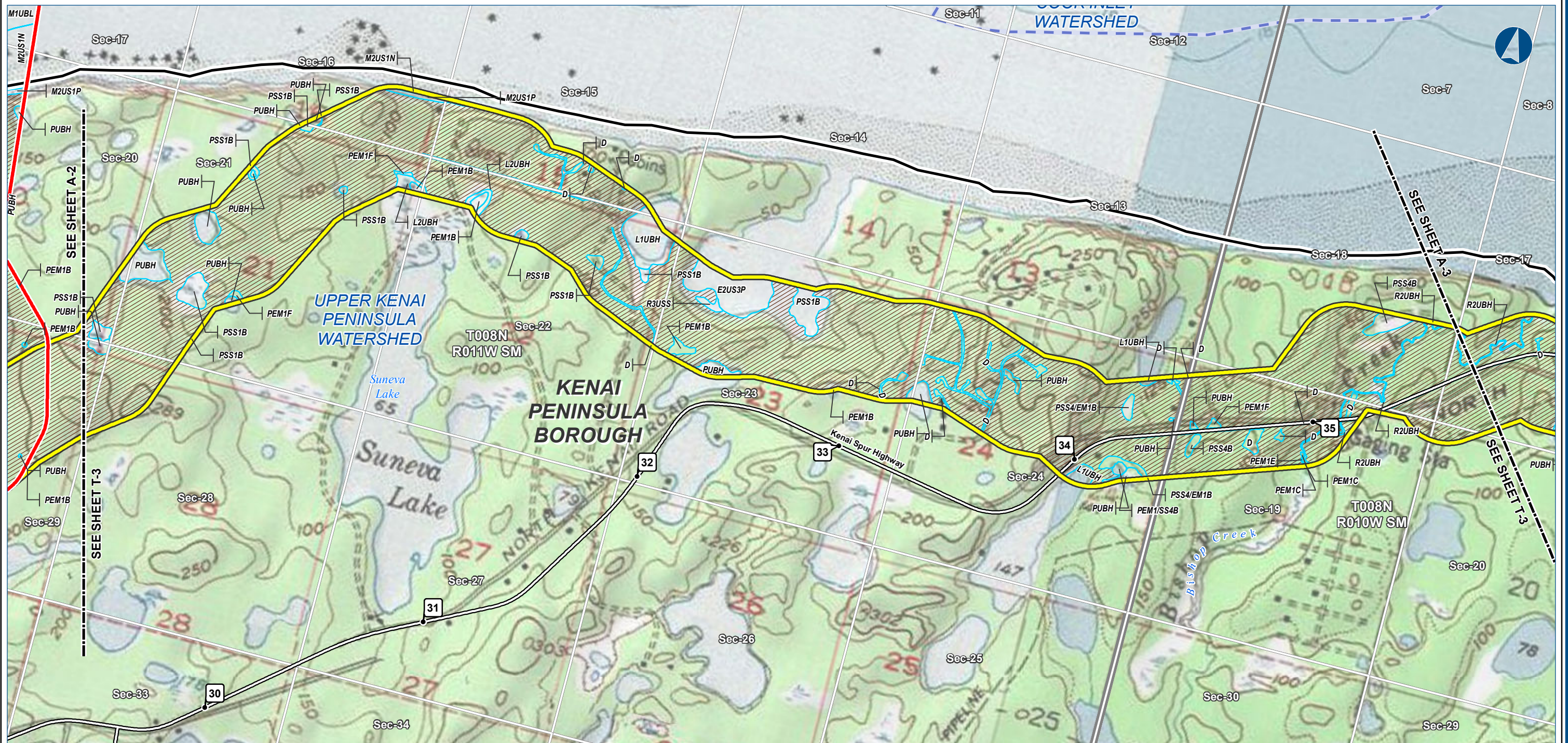
1:24,000 0 1/4 1/2 Miles

DATE: 2015-02-02 PROJECTION: NAD83 STATEPLANE AK 4 5004 FEET

PREPARED BY:
exp Energy Services Inc.
t: +1.907.868.1185 | f: 1.907.868.1846
3800 Centerpoint Dr. Suite 200
Anchorage, AK 99503
U.S.A.
www.exp.com

• BUILDINGS • EARTH & ENVIRONMENT • ENERGY •
• INDUSTRIAL • INFRASTRUCTURE • SUSTAINABILITY •

DWG: WETLANDS-A-KENAI_BASE-PRE-FEED SHEET: A-2



The information contained herein is for informational or planning purposes only. It does not nor should it be deemed to be an offer, request or proposals for rights or occupation of any kind. The Alaska LNG Project Participants and their respective officers, employees and agents, make no warranty, implied or otherwise, nor accept any liability, as to the accuracy or completeness of the information contained in these documents, drawings or electronic files.



LEGEND

Study Corridor - 2,000 ft wide (+/-)

- Pre-FEED Rev A Base Corridor
- Pre-FEED Rev A Alternate Corridor
- Primary Road
- Secondary Road
- Wetland Field Confirmation Location
- Watershed Boundary
- Wetland Area (Cowardin Classification)
- Upland Area
- Borough \ Census Area Boundary
- Township
- Section

ALASKA LNG PROJECT
Wetland Resources - Mainline and Alternate Corridor (Kenai Peninsula Section)

BOROUGH:	KENAI PENINSULA	DRAWN BY:	CC
STATE:	ALASKA	CHECKED BY:	JS
REV. NO.:	0	REVISION	ISSUED FOR REVIEW
		DATE	2015-02-02

PRELIMINARY

1:24,000 0 1/4 1/2 Miles

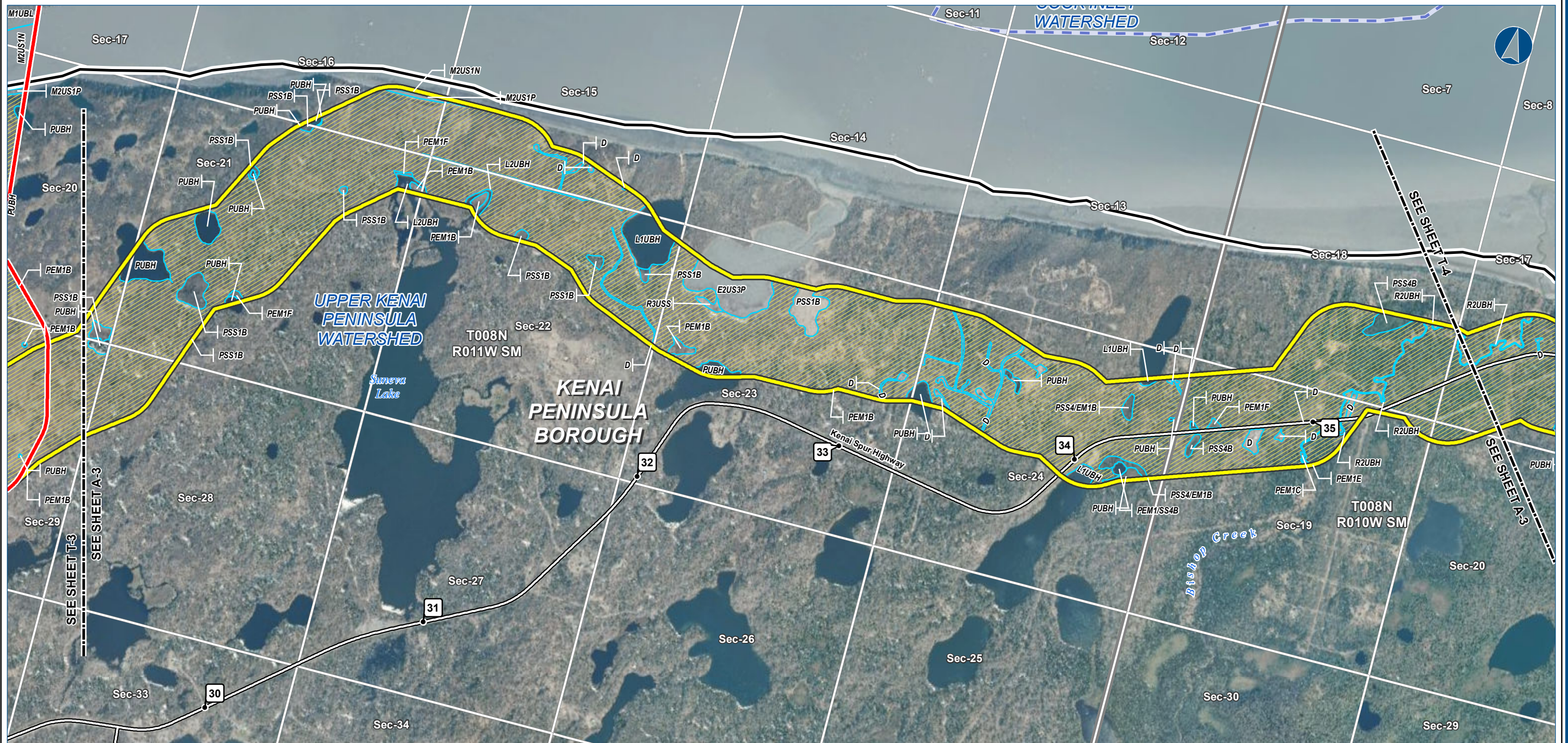
DATE: 2015-02-02 PROJECTION: NAD83 STATEPLANE AK 4 5004 FEET

PREPARED BY:
exp Energy Services Inc.
t: +1.907.868.1185 | f: +1.907.868.1846
3800 Centerpoint Dr. Suite 200
Anchorage, AK 99503
U.S.A.
www.exp.com

• BUILDINGS • EARTH & ENVIRONMENT • ENERGY •
• INDUSTRIAL • INFRASTRUCTURE • SUSTAINABILITY •

DWG: WETLANDS-T-KENAI_BASE-PRE-FEED SHEET: T-3

WETLAND RESOURCES - MAINLINE AND ALTERNATE CORRIDOR (KENAI PENINSULA SECTION)



The information contained herein is for informational or planning purposes only. It does not nor should it be deemed to be an offer, request or proposals for rights or occupation of any kind. The Alaska LNG Project Participants and their respective officers, employees and agents, make no warranty, implied or otherwise, nor accept any liability, as to the accuracy or completeness of the information contained in these documents, drawings or electronic files.



LEGEND

Study Corridor - 2,000 ft wide (+/-)

- Pre-FEED Rev A Base Corridor
- Pre-FEED Rev A Alternate Corridor
- Primary Road
- Secondary Road
- Wetland Field Confirmation Location
- Watershed Boundary
- Wetland Area (Cowardin Classification)
- Upland Area
- Borough \ Census Area Boundary
- Township
- Section

ALASKA LNG PROJECT
Wetland Resources - Mainline and Alternate Corridor (Kenai Peninsula Section)

BOROUGH:	KENAI PENINSULA	DRAWN BY:	CC
STATE:	ALASKA	CHECKED BY:	JS
REV. NO.:	REVISION	DATE	
0	ISSUED FOR REVIEW	2015-02-02	

PRELIMINARY

1:24,000 0 1/4 1/2 Miles

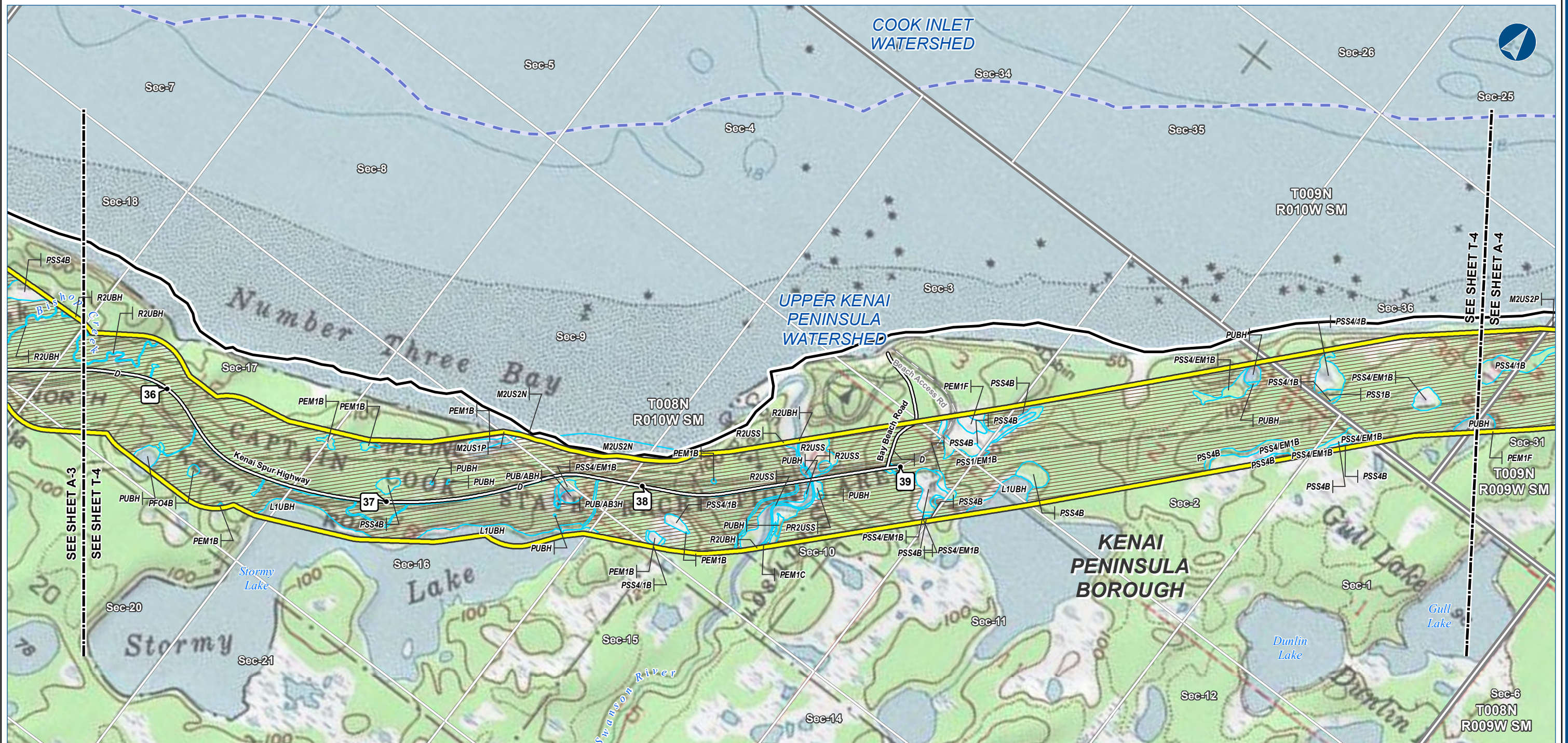
DATE: 2015-02-02 PROJECTION: NAD83 STATEPLANE AK 4 5004 FEET

PREPARED BY:
exp Energy Services Inc.
t: +1.907.868.1185 | f: 1.907.868.1846
3800 Centerpoint Dr. Suite 200
Anchorage, AK 99503
U.S.A.
www.exp.com

• BUILDINGS • EARTH & ENVIRONMENT • ENERGY •
• INDUSTRIAL • INFRASTRUCTURE • SUSTAINABILITY •

DWG: WETLANDS-A-KENAI_BASE-PRE-FEED SHEET: A-3

\\ptalpnz001\TLH_Geomatics\Projects\ExxonMobil\SCLNG\Mapping\20141007_Resource_Report_Pre-FEED_REV_A\04_MXD\03_Ver2\RR2\Pre_FEED_RevA-Wetlands_RR2_KENAIBaseRte.mxd



The information contained herein is for informational or planning purposes only. It does not nor should it be deemed to be an offer, request or proposals for rights or occupation of any kind. The Alaska LNG Project Participants and their respective officers, employees and agents, make no warranty, implied or otherwise, nor accept any liability, as to the accuracy or completeness of the information contained in these documents, drawings or electronic files.



LEGEND

Study Corridor - 2,000 ft wide (+/-)

- Pre-FEED Rev A Base Corridor (Yellow line)
- Pre-FEED Rev A Alternate Corridor (Red line)
- Primary Road (Thick black line)
- Secondary Road (Thin black line)
- Wetland Field Confirmation Location (Green circle with cross)
- Watershed Boundary (Blue dashed line)
- Wetland Area (Cowardin Classification) (Light blue shading)
- Upland Area (Light green shading)
- Borough \ Census Area Boundary (Dashed line)
- Township (Dotted line)
- Section (Solid line)

ALASKA LNG PROJECT
Wetland Resources - Mainline and Alternate Corridor (Kenai Peninsula Section)

BOROUGH:	KENAI PENINSULA	DRAWN BY:	CC
STATE:	ALASKA	CHECKED BY:	JS
REV. NO.:	0	REVISION:	ISSUED FOR REVIEW
		DATE:	2015-02-02

PRELIMINARY

1:24,000 0 1/4 1/2 Miles

DATE: 2015-02-02 PROJECTION: NAD83 STATEPLANE AK 4 5004 FEET

PREPARED BY:
exp Energy Services Inc.
t: +1.907.868.1185 | f: +1.907.868.1846
3800 Centerpoint Dr. Suite 200
Anchorage, AK 99503
U.S.A.
www.exp.com

• BUILDINGS • EARTH & ENVIRONMENT • ENERGY •
• INDUSTRIAL • INFRASTRUCTURE • SUSTAINABILITY •

DWG: WETLANDS-T-KENAI_BASE-PRE-FEED SHEET: T-4



The information contained herein is for informational or planning purposes only. It does not nor should it be deemed to be an offer, request or proposals for rights or occupation of any kind. The Alaska LNG Project Participants and their respective officers, employees and agents, make no warranty, implied or otherwise, nor accept any liability, as to the accuracy or completeness of the information contained in these documents, drawings or electronic files.



LEGEND

Study Corridor - 2,000 ft wide (+/-)

- Pre-FEED Rev A Base Corridor
- Pre-FEED Rev A Alternate Corridor
- Primary Road
- Secondary Road
- Wetland Field Confirmation Location
- Watershed Boundary
- Wetland Area (Cowardin Classification)
- Upland Area
- Borough \ Census Area Boundary
- Township
- Section

ALASKA LNG PROJECT
Wetland Resources - Mainline and Alternate Corridor (Kenai Peninsula Section)

BOROUGH:	KENAI PENINSULA	DRAWN BY:	CC
STATE:	ALASKA	CHECKED BY:	JS
REV. NO.:	0	REVISION	ISSUED FOR REVIEW
		DATE	2015-02-02

PRELIMINARY

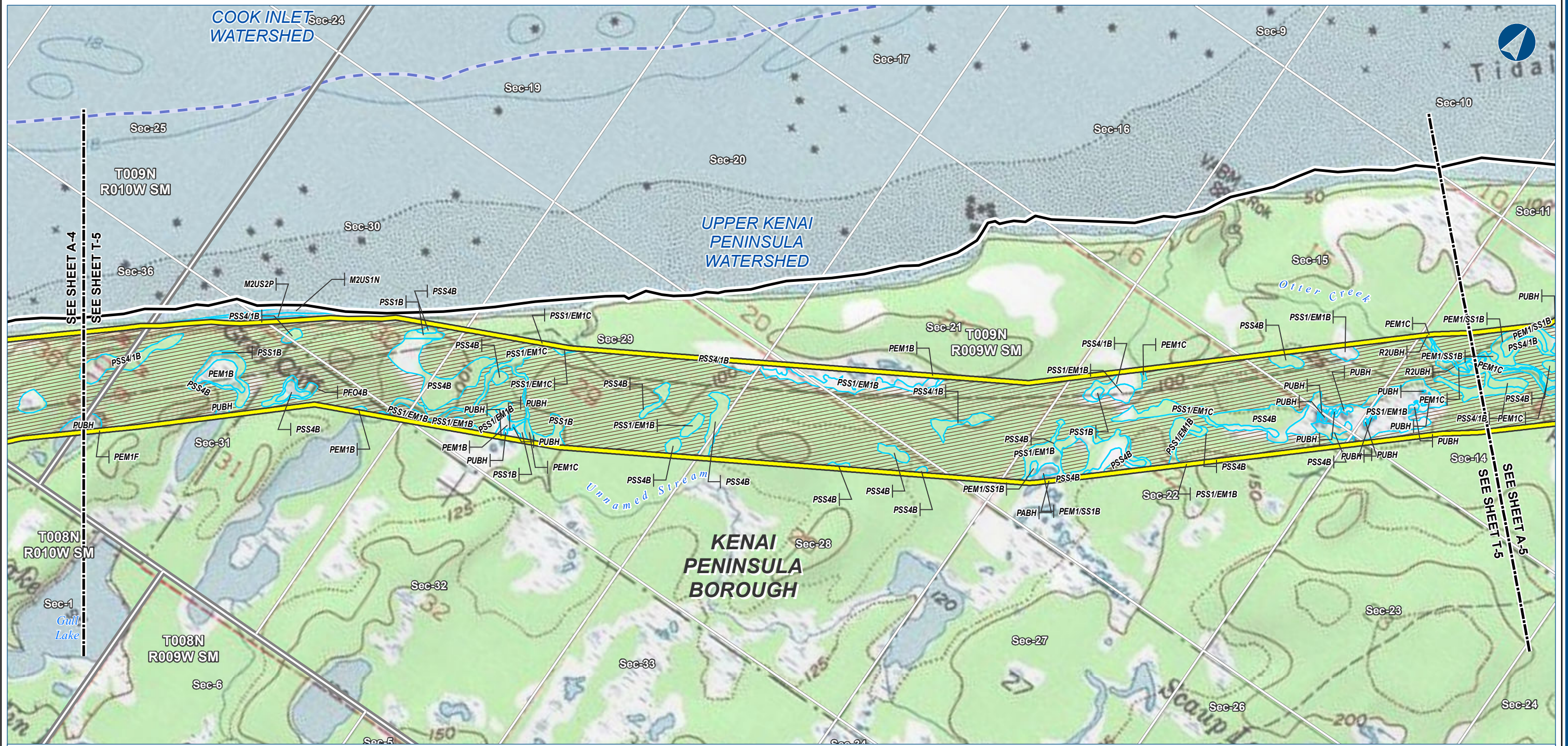
1:24,000 0 1/4 1/2 Miles

DATE: 2015-02-02 PROJECTION: NAD83 STATEPLANE AK 4 5004 FEET

PREPARED BY:
exp Energy Services Inc.
t: +1.907.868.1185 | f: 1.907.868.1846
3800 Centerpoint Dr. Suite 200
Anchorage, AK 99503
U.S.A.
www.exp.com

• BUILDINGS • EARTH & ENVIRONMENT • ENERGY •
• INDUSTRIAL • INFRASTRUCTURE • SUSTAINABILITY •

DWG: WETLANDS-A-KENAI_BASE-PRE-FEED SHEET: A-4



The information contained herein is for informational or planning purposes only. It does not nor should it be deemed to be an offer, request or proposals for rights or occupation of any kind. The Alaska LNG Project Participants and their respective officers, employees and agents, make no warranty, implied or otherwise, nor accept any liability, as to the accuracy or completeness of the information contained in these documents, drawings or electronic files.



LEGEND

Study Corridor - 2,000 ft wide (+/-)

- Pre-FEED Rev A Base Corridor
- Pre-FEED Rev A Alternate Corridor
- Primary Road
- Secondary Road
- Wetland Field Confirmation Location
- Watershed Boundary
- Wetland Area (Cowardin Classification)
- Upland Area
- Borough \ Census Area Boundary
- Township
- Section

ALASKA LNG PROJECT
Wetland Resources - Mainline and Alternate Corridor (Kenai Peninsula Section)

BOROUGH:	KENAI PENINSULA	DRAWN BY:	CC
STATE:	ALASKA	CHECKED BY:	JS
REV. NO.:	REVISION	DATE	
0	ISSUED FOR REVIEW	2015-02-02	

PRELIMINARY

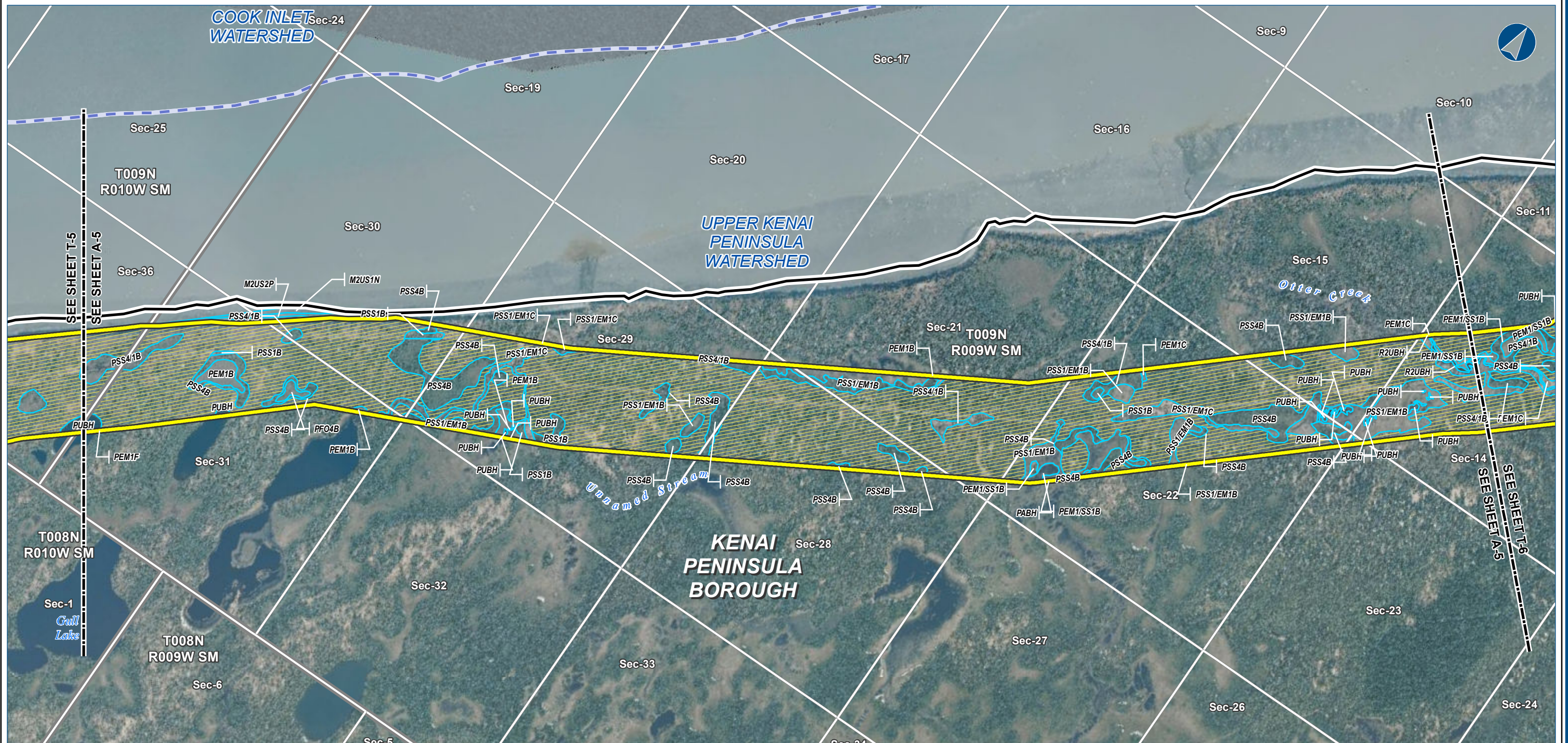
1:24,000 0 1/4 1/2 Miles

DATE: 2015-02-02 PROJECTION: NAD83 STATEPLANE AK 4 5004 FEET

PREPARED BY:
exp Energy Services Inc.
t: +1.907.868.1185 | f: 1.907.868.1846
3800 Centerpoint Dr. Suite 200
Anchorage, AK 99503
U.S.A.
www.exp.com

• BUILDINGS • EARTH & ENVIRONMENT • ENERGY •
• INDUSTRIAL • INFRASTRUCTURE • SUSTAINABILITY •

DWG: WETLANDS-T-KENAI_BASE-PRE-FEED SHEET: T-5



The information contained herein is for informational or planning purposes only. It does not nor should it be deemed to be an offer, request or proposals for rights or occupation of any kind. The Alaska LNG Project Participants and their respective officers, employees and agents, make no warranty, implied or otherwise, nor accept any liability, as to the accuracy or completeness of the information contained in these documents, drawings or electronic files.



LEGEND

Study Corridor - 2,000 ft wide (+/-)

- Pre-FEED Rev A Base Corridor
- Pre-FEED Rev A Alternate Corridor
- Primary Road
- Secondary Road
- Wetland Field Confirmation Location
- Watershed Boundary
- Wetland Area (Cowardin Classification)
- Upland Area
- Borough \ Census Area Boundary
- Township
- Section

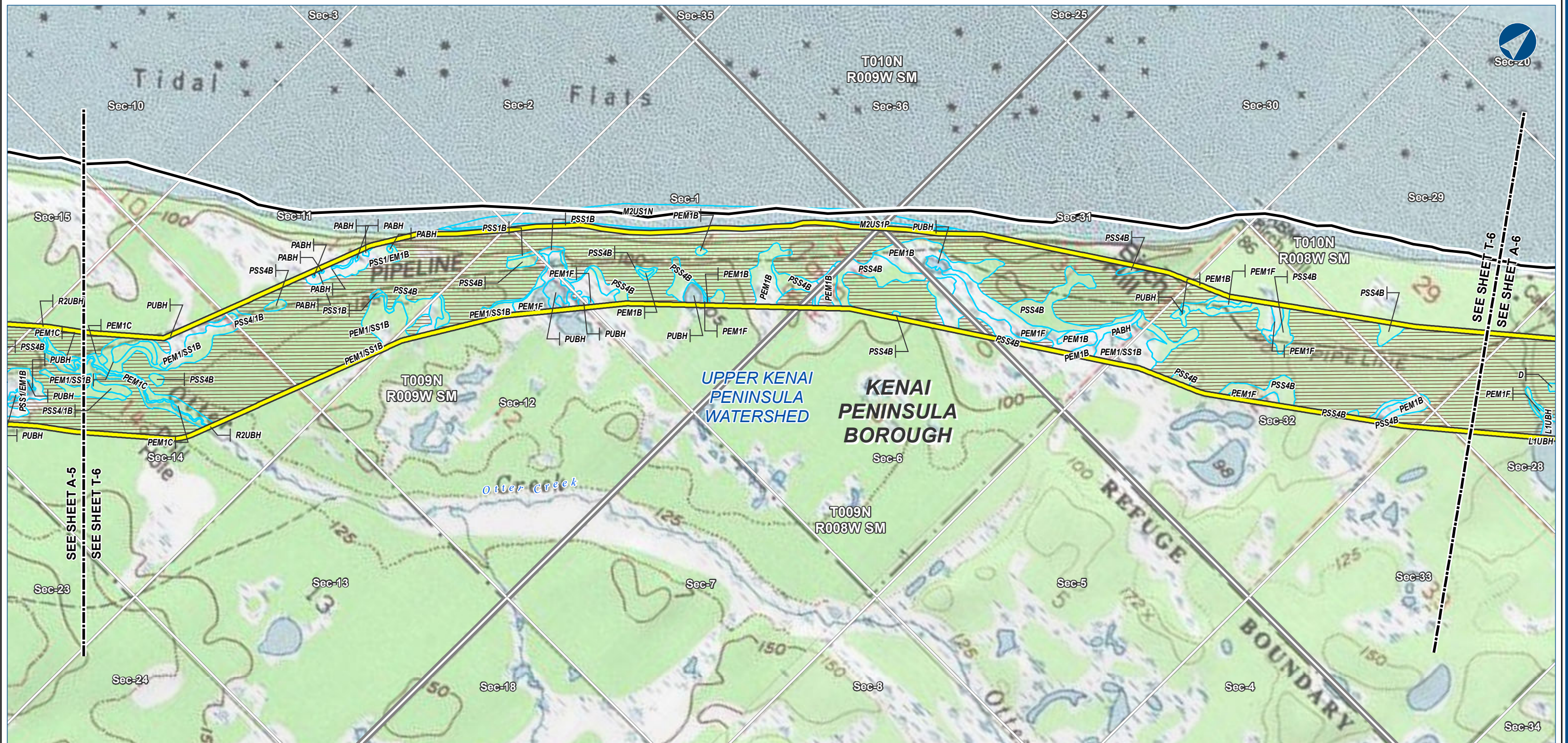
ALASKA LNG PROJECT
Wetland Resources - Mainline and Alternate Corridor (Kenai Peninsula Section)

BOROUGH:	KENAI PENINSULA	DRAWN BY:	CC
STATE:	ALASKA	CHECKED BY:	JS
REV. NO.:	REVISION	DATE	
0	ISSUED FOR REVIEW	2015-02-02	
PRELIMINARY			
1:24,000 0 1/4 1/2 Miles			
DATE:	2015-02-02	PROJECTION:	NAD83 STATEPLANE AK 4 5004 FEET

PREPARED BY:
exp Energy Services Inc.
t: +1.907.868.1185 | f: +1.907.868.1846
3800 Centerpoint Dr. Suite 200
Anchorage, AK 99503
U.S.A.
www.exp.com

• BUILDINGS • EARTH & ENVIRONMENT • ENERGY •
• INDUSTRIAL • INFRASTRUCTURE • SUSTAINABILITY •

DWG: WETLANDS-A-KENAI_BASE-PRE-FEED SHEET: A-5



The information contained herein is for informational or planning purposes only. It does not nor should it be deemed to be an offer, request or proposals for rights or occupation of any kind. The Alaska LNG Project Participants and their respective officers, employees and agents, make no warranty, implied or otherwise, nor accept any liability, as to the accuracy or completeness of the information contained in these documents, drawings or electronic files.



LEGEND

Study Corridor - 2,000 ft wide (+/-)

- Pre-FEED Rev A Base Corridor
- Pre-FEED Rev A Alternate Corridor
- Primary Road
- Secondary Road
- Wetland Field Confirmation Location
- Watershed Boundary
- Wetland Area (Cowardin Classification)
- Upland Area
- Borough \ Census Area Boundary
- Township
- Section

ALASKA LNG PROJECT
Wetland Resources - Mainline and Alternate Corridor (Kenai Peninsula Section)

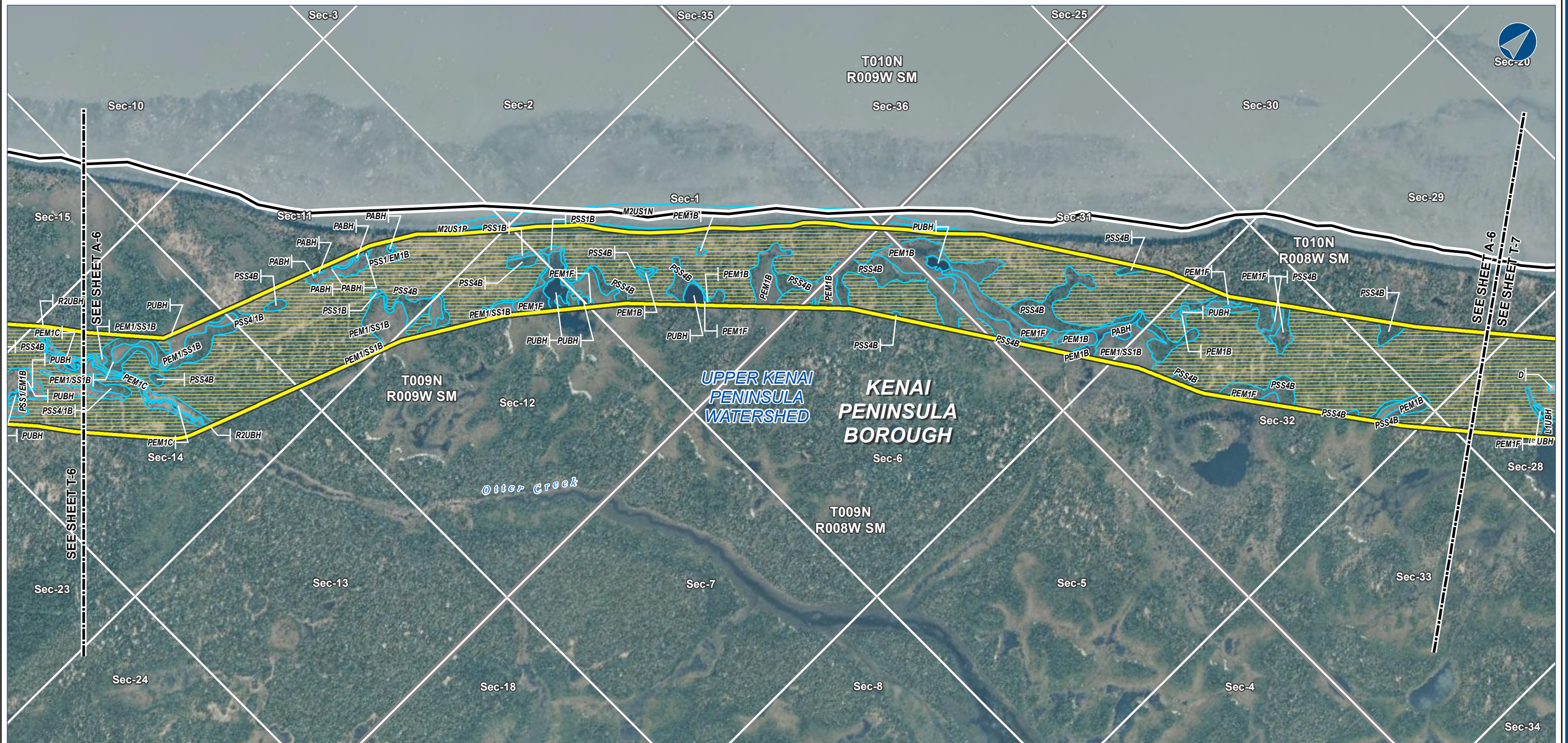
BOROUGH:	KENAI PENINSULA	DRAWN BY:	CC
STATE:	ALASKA	CHECKED BY:	JS
REV. NO.:	REVISION	DATE	
0	ISSUED FOR REVIEW	2015-02-02	
PRELIMINARY			
1:24,000 0 1/4 1/2 Miles			
DATE:	2015-02-02	PROJECTION:	NAD83 STATEPLANE AK 4 5004 FEET

PREPARED BY:
exp Energy Services Inc.

t: +1.907.868.1185 | f: +1.907.868.1846
3800 Centerpoint Dr. Suite 200
Anchorage, AK 99503
U.S.A.
www.exp.com

• BUILDINGS • EARTH & ENVIRONMENT • ENERGY •
• INDUSTRIAL • INFRASTRUCTURE • SUSTAINABILITY •

DWG: WETLANDS-T-KENAI_BASE-PRE-FEED SHEET: T-6



The information contained herein is for informational or planning purposes only. It does not nor should it be deemed to be an offer, request or proposals for rights or occupation of any kind. The Alaska LNG Project Participants and their respective officers, employees and agents, make no warranty, implied or otherwise, nor accept any liability, as to the accuracy or completeness of the information contained in these documents, drawings or electronic files.



LEGEND

Study Corridor - 2,000 ft wide (+/-)

- Pre-FEED Rev A Base Corridor
- Pre-FEED Rev A Alternate Corridor

Primary Road
Secondary Road

- Wetland Field Confirmation Location
- Watershed Boundary
- Wetland Area (Cowardin Classification)
- Upland Area

- Borough \ Census Area Boundary
- Township
- Section

ALASKA LNG PROJECT
Wetland Resources - Mainline and Alternate Corridor (Kenai Peninsula Section)

BOROUGH:	KENAI PENINSULA	DRAWN BY:	CC
STATE:	ALASKA	CHECKED BY:	JS
REV. NO.:	REVISION	DATE	
0	ISSUED FOR REVIEW	2015-02-02	

PRELIMINARY

1:24,000 0 1/4 1/2 Miles

DATE: 2015-02-02 PROJECTION: NAD83 STATEPLANE AK 4 5004 FEET

PREPARED BY:
exp Energy Services Inc.

t: +1.907.868.1185 | f: 1.907.868.1846
3800 Centerpoint Dr. Suite 200
Anchorage, AK 99503
U.S.A.
www.exp.com

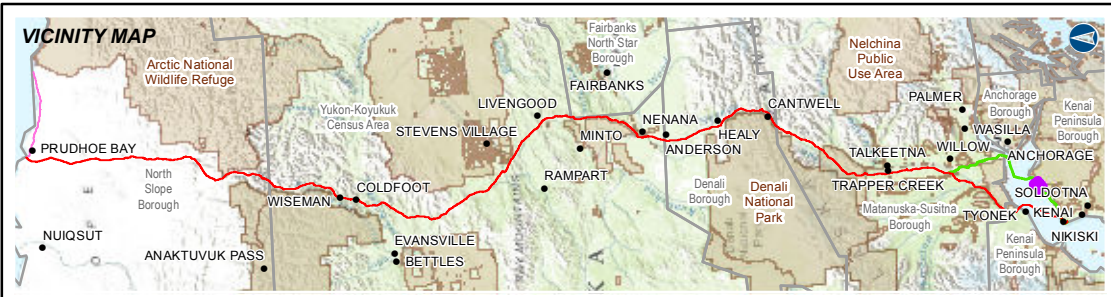
exp.

• BUILDINGS • EARTH & ENVIRONMENT • ENERGY •
• INDUSTRIAL • INFRASTRUCTURE • SUSTAINABILITY •

DWG: WETLANDS-A-KENAI_BASE-PRE-FEED SHEET: A-6



The information contained herein is for informational or planning purposes only. It does not nor should it be deemed to be an offer, request or proposals for rights or occupation of any kind. The Alaska LNG Project Participants and their respective officers, employees and agents, make no warranty, implied or otherwise, nor accept any liability, as to the accuracy or completeness of the information contained in these documents, drawings or electronic files.



LEGEND

Study Corridor - 2,000 ft wide (+/-)

- Pre-FEED Rev A Base Corridor
- Pre-FEED Rev A Alternate Corridor
- Primary Road
- Secondary Road
- Wetland Field Confirmation Location
- Watershed Boundary
- Wetland Area (Cowardin Classification)
- Upland Area
- Borough \ Census Area Boundary
- Township
- Section

ALASKA LNG PROJECT
Wetland Resources - Mainline and Alternate Corridor (Kenai Peninsula Section)

BOROUGH:	KENAI PENINSULA	DRAWN BY:	CC
STATE:	ALASKA	CHECKED BY:	JS
REV. NO.:	0	REVISION	ISSUED FOR REVIEW
		DATE	2015-02-02

PRELIMINARY

1:24,000 0 1/4 1/2 Miles

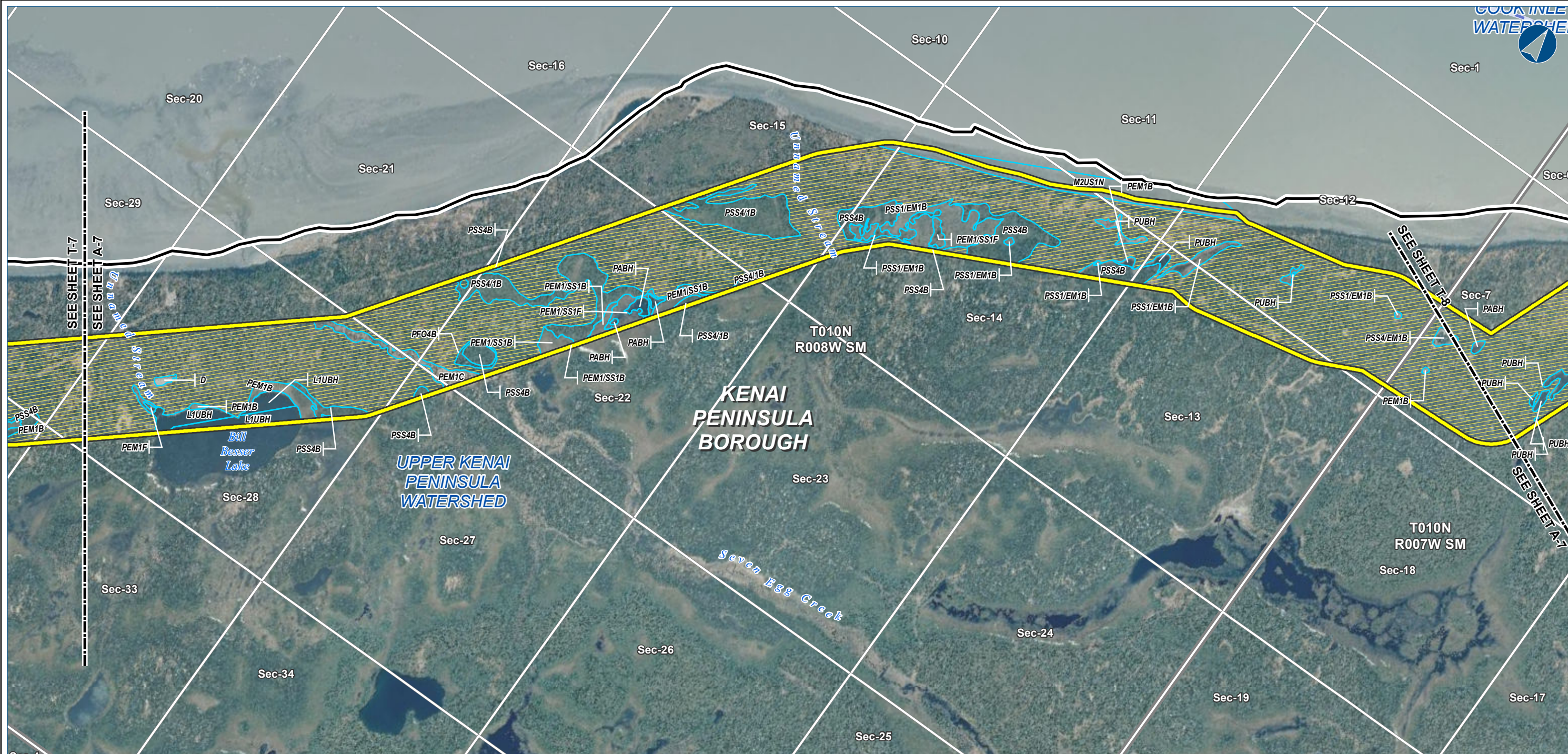
DATE: 2015-02-02 PROJECTION: NAD83 STATEPLANE AK 4 5004 FEET

PREPARED BY:
exp Energy Services Inc.
t: +1.907.868.1185 | f: +1.907.868.1846
3800 Centerpoint Dr. Suite 200
Anchorage, AK 99503
U.S.A.
www.exp.com

exp.

• BUILDINGS • EARTH & ENVIRONMENT • ENERGY •
• INDUSTRIAL • INFRASTRUCTURE • SUSTAINABILITY •

DWG: WETLANDS-T-KENAI_BASE-PRE-FEED SHEET: T-7



The information contained herein is for informational or planning purposes only. It does not nor should it be deemed to be an offer, request or proposals for rights or occupation of any kind. The Alaska LNG Project Participants and their respective officers, employees and agents, make no warranty, implied or otherwise, nor accept any liability, as to the accuracy or completeness of the information contained in these documents, drawings or electronic files.



LEGEND

Study Corridor - 2,000 ft wide (+/-)

- Pre-FEED Rev A Base Corridor
- Pre-FEED Rev A Alternate Corridor

Primary Road

Secondary Road

- Wetland Field Confirmation Location
- Watershed Boundary
- Wetland Area (Cowardin Classification)
- Upland Area

- Borough \ Census Area Boundary
- Township
- Section

ALASKA LNG PROJECT
Wetland Resources - Mainline and Alternate Corridor (Kenai Peninsula Section)

BOROUGH:	KENAI PENINSULA	DRAWN BY:	CC
STATE:	ALASKA	CHECKED BY:	JS
REV. NO.:	REVISION	DATE	
0	ISSUED FOR REVIEW	2015-02-02	

PRELIMINARY

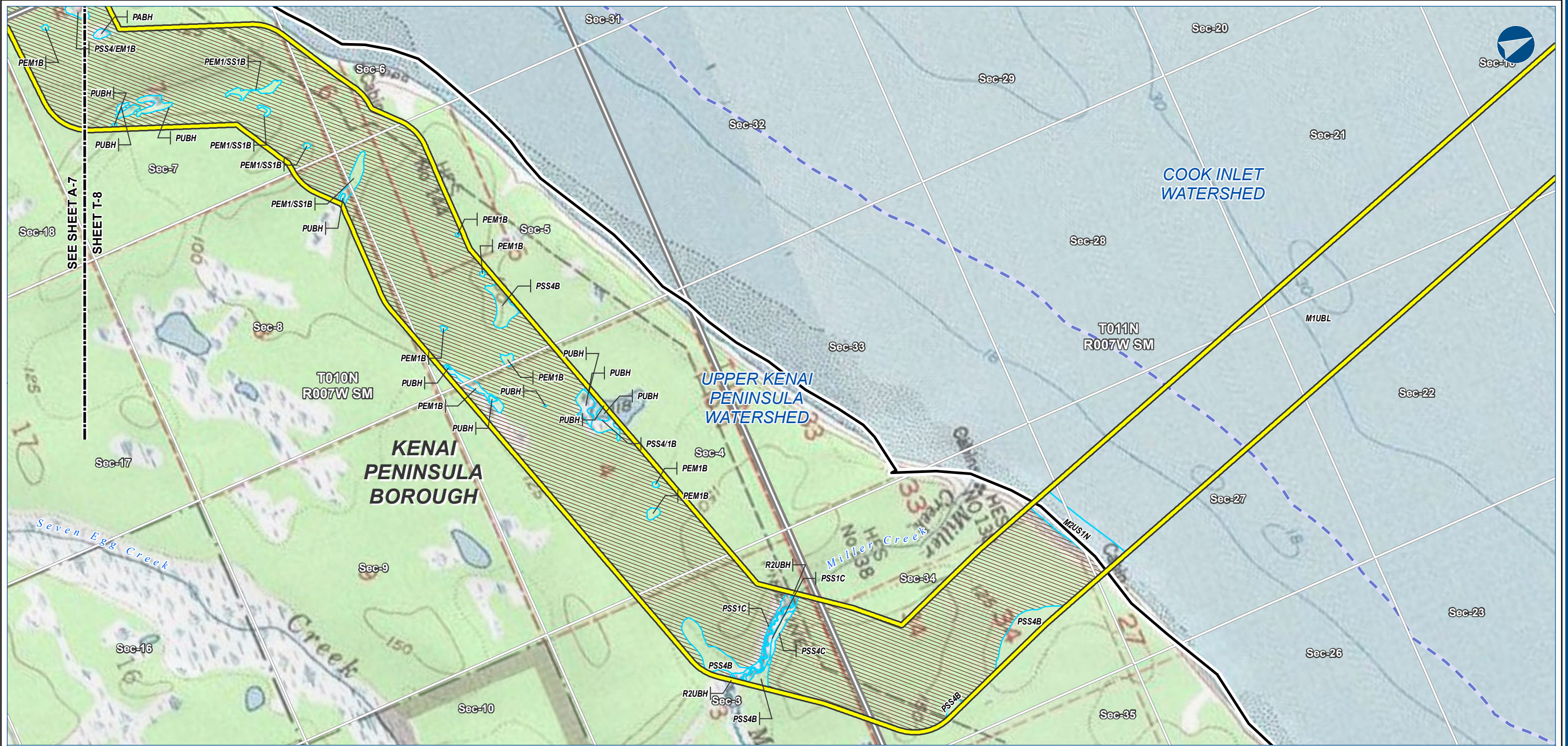
1:24,000 0 1/4 1/2 Miles

DATE: 2015-02-02 PROJECTION: NAD83 STATEPLANE AK 4 5004 FEET

PREPARED BY:
exp Energy Services Inc.
t: +1.907.868.1185 | f: +1.907.868.1846
3800 Centerpoint Dr. Suite 200
Anchorage, AK 99503
U.S.A.
www.exp.com

• BUILDINGS • EARTH & ENVIRONMENT • ENERGY •
• INDUSTRIAL • INFRASTRUCTURE • SUSTAINABILITY •

DWG: WETLANDS-A-KENAI_BASE-PRE-FEED SHEET: A-7



The information contained herein is for informational or planning purposes only. It does not nor should it be deemed to be an offer, request or proposals for rights or occupation of any kind. The Alaska LNG Project Participants and their respective officers, employees and agents, make no warranty, implied or otherwise, nor accept any liability, as to the accuracy or completeness of the information contained in these documents, drawings or electronic files.



LEGEND

Study Corridor - 2,000 ft wide (+/-)

- Pre-FEED Rev A Base Corridor
- Pre-FEED Rev A Alternate Corridor

Primary Road
Secondary Road

- Wetland Field Confirmation Location
- Watershed Boundary
- Wetland Area (Cowardin Classification)
- Upland Area

- Borough \ Census Area Boundary
- Township
- Section

ALASKA LNG PROJECT
Wetland Resources - Mainline and Alternate Corridor (Kenai Peninsula Section)

BOROUGH:	KENAI PENINSULA	DRAWN BY:	CC
STATE:	ALASKA	CHECKED BY:	JS
REV. NO.:	REVISION	DATE	
0	ISSUED FOR REVIEW	2015-02-02	

PRELIMINARY

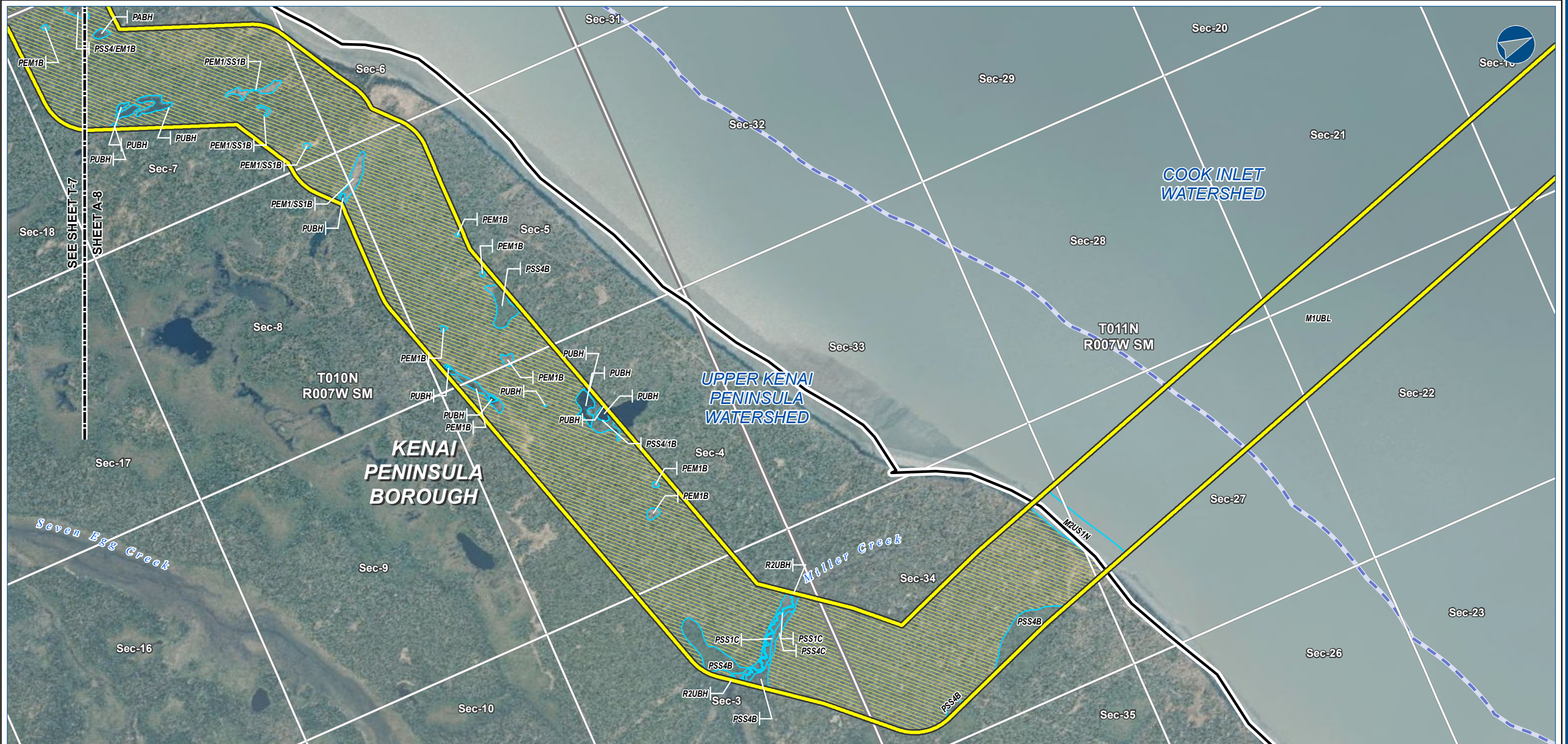
1:24,000 0 1/4 1/2 Miles

DATE: 2015-02-02 PROJECTION: NAD83 STATEPLANE AK 4 5004 FEET

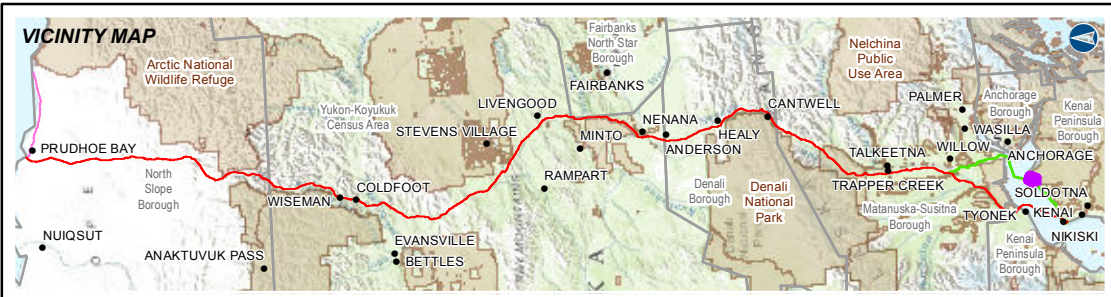
PREPARED BY:
exp Energy Services Inc.
t: +1.907.868.1185 | f: +1.907.868.1846
3800 Centerpoint Dr. Suite 200
Anchorage, AK 99503
U.S.A.
www.exp.com

• BUILDINGS • EARTH & ENVIRONMENT • ENERGY •
• INDUSTRIAL • INFRASTRUCTURE • SUSTAINABILITY •

DWG: WETLANDS-T-KENAI_BASE-PRE-FEED SHEET: T-8



The information contained herein is for informational or planning purposes only. It does not nor should it be deemed to be an offer, request or proposals for rights or occupation of any kind. The Alaska LNG Project Participants and their respective officers, employees and agents, make no warranty, implied or otherwise, nor accept any liability, as to the accuracy or completeness of the information contained in these documents, drawings or electronic files.



LEGEND

Study Corridor - 2,000 ft wide (+/-)

- Pre-FEED Rev A Base Corridor
- Pre-FEED Rev A Alternate Corridor

Primary Road

Secondary Road

- Wetland Field Confirmation Location
- Watershed Boundary
- Wetland Area (Cowardin Classification)
- Upland Area

- Borough \ Census Area Boundary
- Township
- Section

ALASKA LNG PROJECT
Wetland Resources - Mainline and Alternate Corridor (Kenai Peninsula Section)

BOROUGH:	KENAI PENINSULA	DRAWN BY:	CC
STATE:	ALASKA	CHECKED BY:	JS
REV. NO.:	REVISION	DATE	
0	ISSUED FOR REVIEW	2015-02-02	

PRELIMINARY

1:24,000 0 1/4 1/2 Miles

DATE: 2015-02-02 PROJECTION: NAD83 STATEPLANE AK 4 5004 FEET

PREPARED BY:
exp Energy Services Inc.

t: +1.907.868.1185 | f: +1.907.868.1846
3800 Centerpoint Dr. Suite 200
Anchorage, AK 99503
U.S.A.
www.exp.com

exp.

• BUILDINGS • EARTH & ENVIRONMENT • ENERGY •
• INDUSTRIAL • INFRASTRUCTURE • SUSTAINABILITY •

DWG: WETLANDS-A-KENAI_BASE-PRE-FEED SHEET: A-8