

Alaska LNG Project

Wetland Maps GTP - LNG Sites


Resource Report 2 Appendix F

The information contained herein is for informational or planning purposes only. It does not nor should it be deemed to be an offer, request or proposals for rights or occupation of any kind. The Alaska LNG Project Participants and their respective officers, employees and agents, make no warranty, implied or otherwise, nor accept any liability, as to the accuracy or completeness of the information contained in these documents, drawings or electronic files.

ALASKA LNG PROJECT			
<i>Wetland Maps - GTP - LNG Sites</i>			
BOROUGH:	-	DRAWN BY:	CC
STATE:	ALASKA	CHECKED BY:	JS
REV. NO.:		REVISION	DATE
0		ISSUED FOR REVIEW	2015-02-04
PRELIMINARY			

PREPARED BY:
exp Energy Services Inc.

t: +1.850.385.5441 | f: +1.850.385.5523
1300 Metropolitan Blvd.
Tallahassee, FL 32308
U.S.A.
www.exp.com



• BUILDINGS • EARTH & ENVIRONMENT • ENERGY •
• INDUSTRIAL • INFRASTRUCTURE • SUSTAINABILITY •

DATE: 2015-02-04	PROJECTION: NAD83 STATE PLANE AK 4 5004 FEET	DWG: PRE-FEED-GTP-LNG-COVER	SHEET: GTP-LNG-COVER
-------------------------	---	------------------------------------	-----------------------------



A r c t i c
O c e a n

Pg. 1
Pg. 2

NORTH
SLOPE
BOROUGH

The information contained herein is for informational or planning purposes only. It does not nor should it be deemed to be an offer, request or proposals for rights or occupation of any kind. The Alaska LNG Project Participants and their respective officers, employees and agents, make no warranty, implied or otherwise, nor accept any liability, as to the accuracy or completeness of the information contained in these documents, drawings or electronic files.

ALASKA LNG PROJECT			
Wetlands Resources - GTP Site			
BOROUGH: NORTH SLOPE		DRAWN BY: CC	
STATE: ALASKA		CHECKED BY: JS	
REV. NO.:	REVISION		DATE
0	ISSUED FOR REVIEW		2015-02-02
PRELIMINARY			

PREPARED BY:
exp Energy Services Inc.

t: +1.850.385.5441 | f: +1.850.385.5523
1300 Metropolitan Blvd.
Tallahassee, FL 32308
U.S.A.

www.exp.com



• BUILDINGS • EARTH & ENVIRONMENT • ENERGY •
• INDUSTRIAL • INFRASTRUCTURE • SUSTAINABILITY •

The information contained herein is for informational or planning purposed only. It does not nor should it be deemed to be an offer, request or proposals for rights or occupation of any kind. The Alaska LNG Project Participants and their respective officers, employees and agents, make no warranty, implied or otherwise, nor accept any liability, as to the accuracy or completeness of the information contained in these documents, drawings or electronic files.

PREPARED BY:
exp Energy Services Inc.

t: +1.907.868.1185 | f: +1.907.868.1846
3800 Centerpoint Dr. Suite 200
Anchorage, AK 99503
U.S.A.
www.exp.com



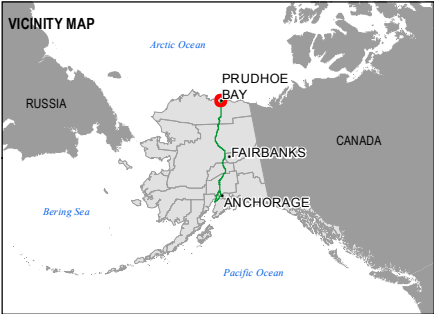
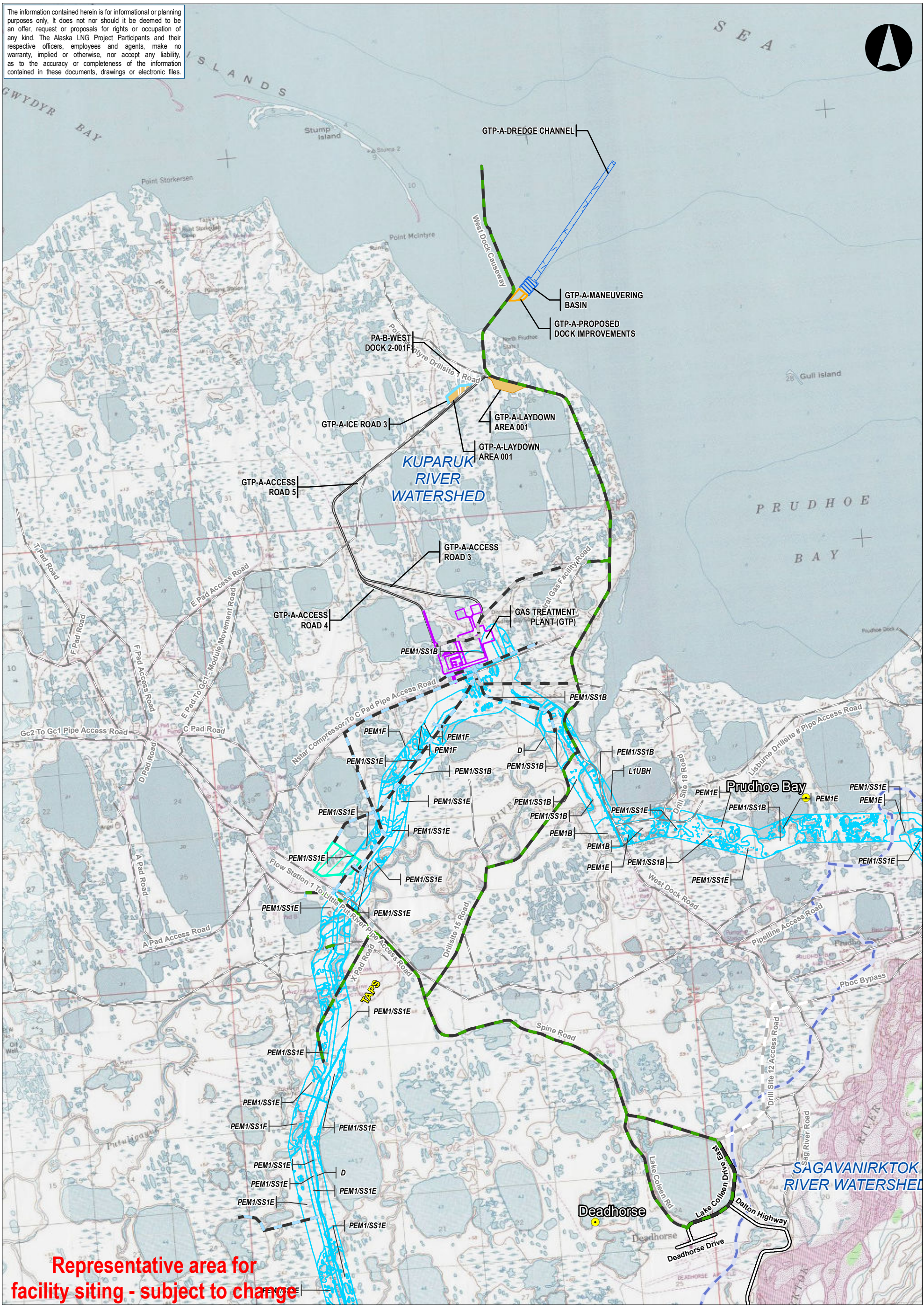
• BUILDINGS • EARTH & ENVIRONMENT • ENERGY •

• INDUSTRIAL • INFRASTRUCTURE • SUSTAINABILITY •

DWG:PRE_FEED_REVA-NOTES

SHEET:ALT-NOTES-1

The information contained herein is for informational or planning purposes only. It does not nor should it be deemed to be an offer, request or proposals for rights or occupation of any kind. The Alaska LNG Project Participants and their respective officers, employees and agents, make no warranty, implied or otherwise, nor accept any liability, as to the accuracy or completeness of the information contained in these documents, drawings or electronic files.



LEGEND

Proposed GTP Site

Proposed Reservoir

Access Road

Primary

Primary, Gravel

Temporary, Gravel

Temporary, Ice road

Watershed Boundary

Wetland Area (Cowardin Classification)

Upland Area

Primary Road

Secondary Road

Major Rivers

ALASKA LNG PROJECT
Wetland Resources -
GTP Facility

BOROUGH:	NORTH SLOPE	DRAWN BY:	CC
STATE:	ALASKA	CHECKED BY:	JS
REV. NO.	REVISION	DATE	
0	ISSUED FOR REVIEW	2015-02-03	

PRELIMINARY

1:75,000

0 1 2 Miles

DATE: 2015-02-03

PROJECTION: NAD83 STATEPLANE AK 4 5004 FEET

PREPARED BY:
exp Energy Services Inc.

t: +1.907.868.1185 | f: 1.907.868.1846
3800 Centerpoint Dr. Suite 200
Anchorage, AK 99503
U.S.A.
www.exp.com

BUILDINGS • EARTH & ENVIRONMENT • ENERGY •

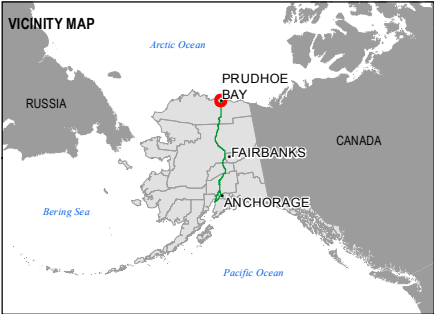
INDUSTRIAL • INFRASTRUCTURE • SUSTAINABILITY •

DWG: WETLANDS-T-GTP-1

SHEET: 1

\\ptl\pzn\001\TLH_Geomatics\Projects\ExxonMobil\SCLNG\Mapping\20141007_Resource_Report_Pre-FEED_REV_A\04_MXD\03_Ver2\RR2\Pre_FEED_RevA-T-Wetlands_RR2_GTP_1.mxd

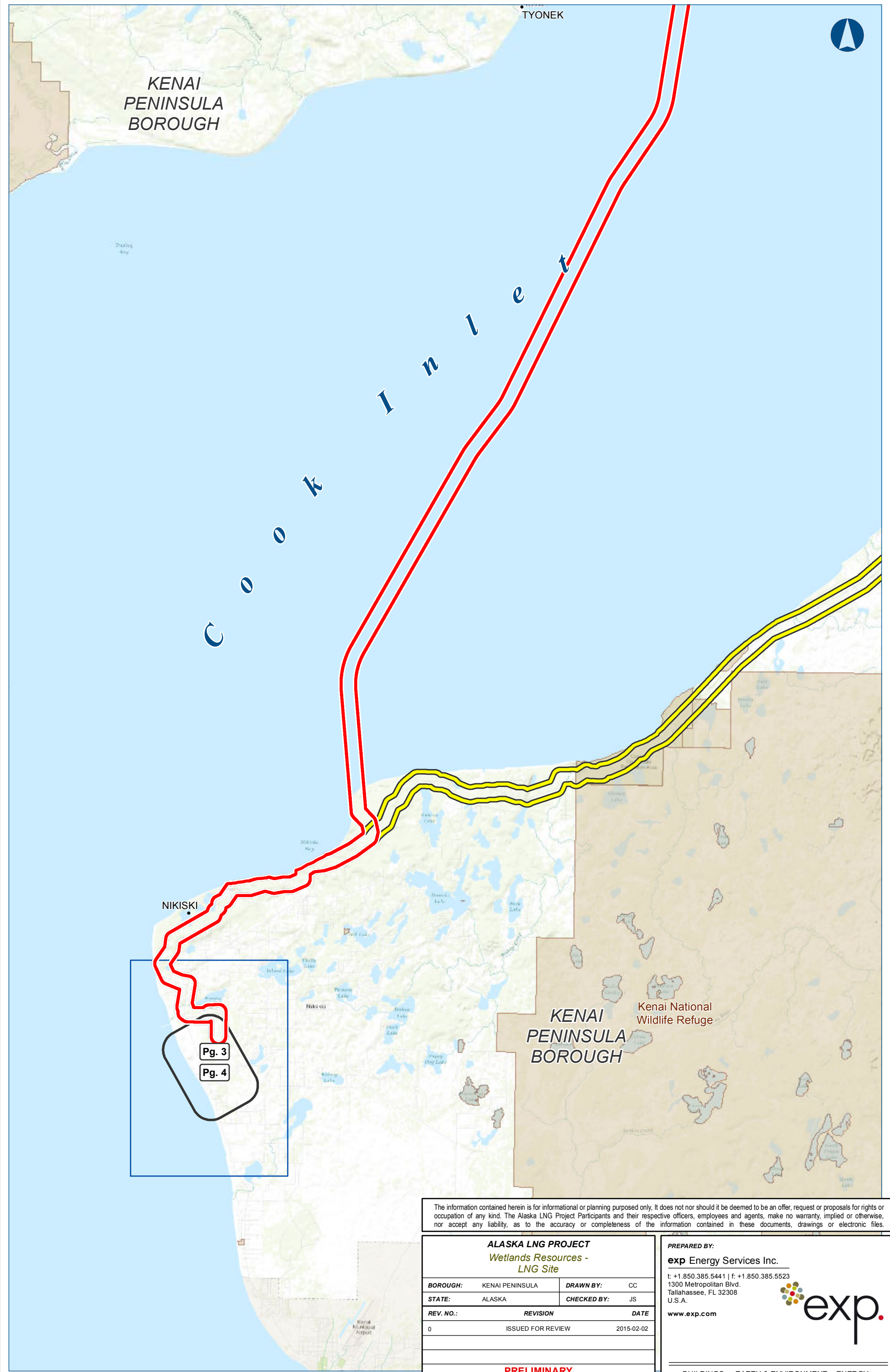
The information contained herein is for informational or planning purposes only. It does not nor should it be deemed to be an offer, request or proposals for rights or occupation of any kind. The Alaska LNG Project Participants and their respective officers, employees and agents, make no warranty, implied or otherwise, nor accept any liability, as to the accuracy or completeness of the information contained in these documents, drawings or electronic files.



LEGEND	
	Proposed GTP Site
	Proposed Reservoir
	Access Road
	Primary
	Primary, Gravel
	Temporary, Gravel
	Temporary, Ice road
	Watershed Boundary
	Wetland Area (Cowardin Classification)
	Upland Area
	Primary Road
	Secondary Road
	Major Rivers

ALASKA LNG PROJECT Wetland Resources - GTP Facility		
BOROUGH:	NORTH SLOPE	DRAWN BY:
STATE:	ALASKA	CHECKED BY:
REV. NO.	REVISION	DATE
0	ISSUED FOR REVIEW	2015-02-03
PRELIMINARY		
1:75,000	0	1
DATE: 2015-02-03 PROJECTION: NAD83 STATEPLANE AK 4 5004 FEET		

PREPARED BY: exp Energy Services Inc.	
t: +1.907.868.1185 f: 1.907.868.1846 3800 Centerpoint Dr. Suite 200 Anchorage, AK 99503 U.S.A. www.exp.com	
• BUILDINGS • EARTH & ENVIRONMENT • ENERGY • • INDUSTRIAL • INFRASTRUCTURE • SUSTAINABILITY •	
DWG: WETLANDS-A-GTP-2	SHEET: 2



The information contained herein is for informational or planning purposes only. It does not nor should it be deemed to be an offer, request or proposals for rights or occupation of any kind. The Alaska LNG Project Participants and their respective officers, employees and agents, make no warranty, implied or otherwise, nor accept any liability, as to the accuracy or completeness of the information contained in these documents, drawings or electronic files.

ALASKA LNG PROJECT			
Wetlands Resources - LNG Site			
BOROUGH: KENAI PENINSULA		DRAWN BY: CC	
STATE: ALASKA		CHECKED BY: JS	
REV. NO.:		REVISION	
		DATE	
0		ISSUED FOR REVIEW	
		2015-02-02	
PRELIMINARY			

PREPARED BY:

exp Energy Services Inc.

t: +1.850.385.5441 | f: +1.850.385.5523
1300 Metropolitan Blvd.
Tallahassee, FL 32308
U.S.A.

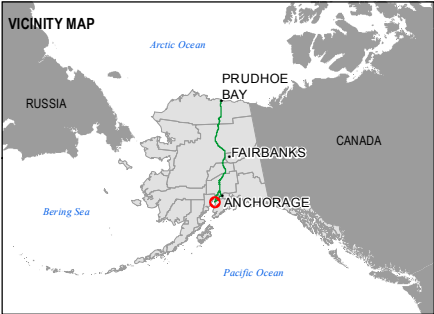
www.exp.com

• BUILDINGS • EARTH & ENVIRONMENT • ENERGY •
• INDUSTRIAL • INFRASTRUCTURE • SUSTAINABILITY •



Representative area for
facility siting - subject to change

The information contained herein is for informational or planning purposes only. It does not nor should it be deemed to be an offer, request or proposals for rights or occupation of any kind. The Alaska LNG Project Participants and their respective officers, employees and agents, make no warranty, implied or otherwise, nor accept any liability, as to the accuracy or completeness of the information contained in these documents, drawings or electronic files.



LEGEND

- Places
- Liquefaction Facility Area
- Primary Road
- Secondary Road
- Major Rivers
- Watershed Boundary
- Wetland Area (Cowardin Classification)
- Upland Area

ALASKA LNG PROJECT
Wetland Resources -
Liquefaction Facility

BOROUGH:	KENAI PENINSULA	DRAWN BY:	CC
STATE:	ALASKA	CHECKED BY:	JS
REV. NO.	REVISION	DATE	
0	ISSUED FOR REVIEW	2015-02-03	

PRELIMINARY

1:24,000 0 0.3 0.6 Miles

DATE: 2015-02-03 PROJECTION: NAD83 STATEPLANE AK 4 5004 FEET

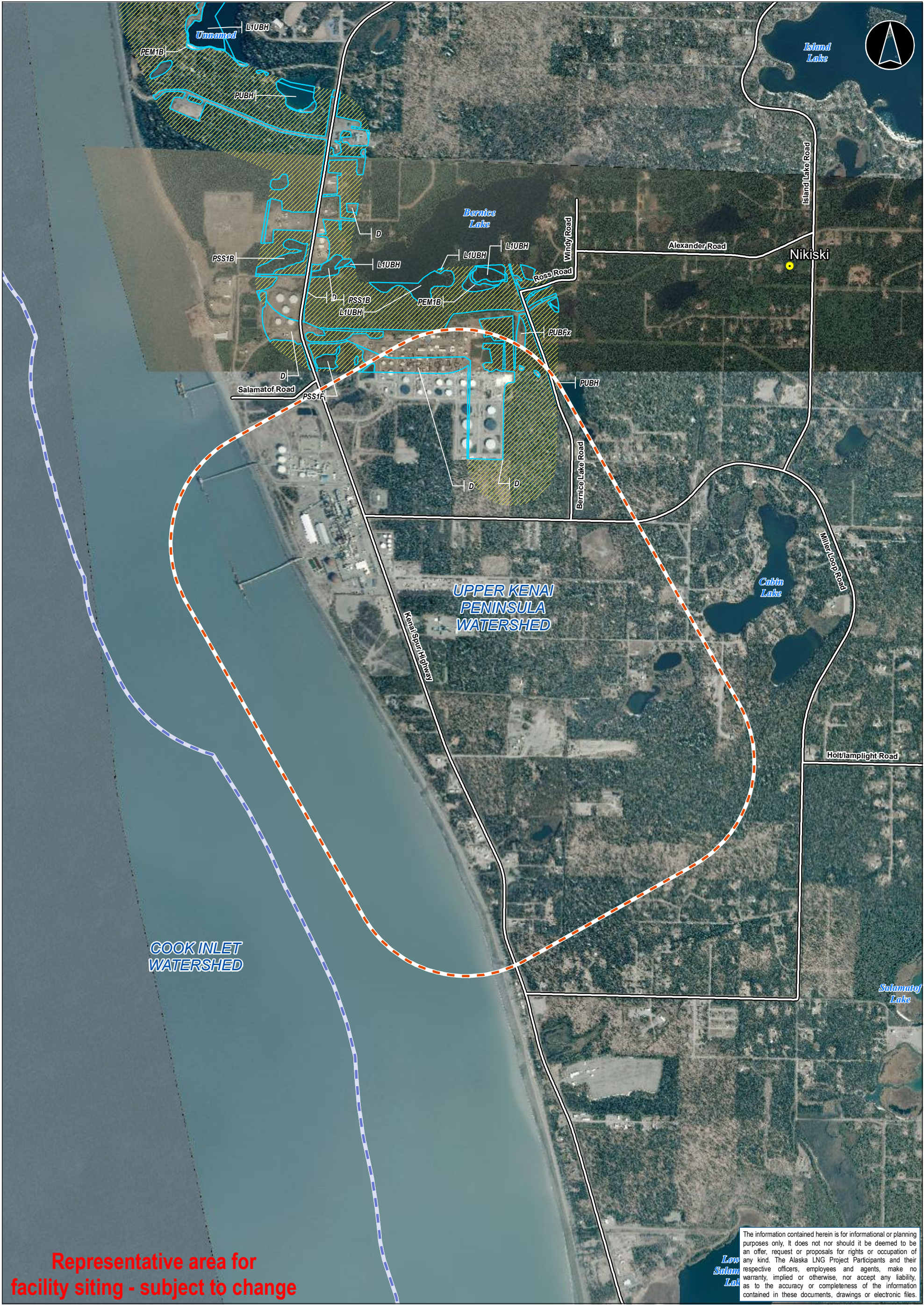
PREPARED BY:
exp Energy Services Inc.

t: +1.907.868.1185 | f: +1.907.868.1846
3800 Centerpoint Dr. Suite 200
Anchorage, AK 99503
U.S.A.
www.exp.com



• BUILDINGS • EARTH & ENVIRONMENT • ENERGY •
• INDUSTRIAL • INFRASTRUCTURE • SUSTAINABILITY •

DWG: WETLAND-T-LIQ-3 SHEET: 3



Representative area for
facility siting - subject to change

The information contained herein is for informational or planning purposes only. It does not nor should it be deemed to be an offer, request or proposals for rights or occupation of any kind. The Alaska LNG Project Participants and their respective officers, employees and agents, make no warranty, implied or otherwise, nor accept any liability, as to the accuracy or completeness of the information contained in these documents, drawings or electronic files.



LEGEND			
	Places		Watershed Boundary
	Liquefaction Facility Area		Wetland Area (Cowardin Classification)
	Primary Road		Upland Area
	Secondary Road		
	Major Rivers		

ALASKA LNG PROJECT Wetland Resources - Liquefaction Facility			
BOROUGH: KENAI PENINSULA		DRAWN BY: CC	
STATE: ALASKA		CHECKED BY: JS	
REV. NO.	REVISION		DATE
0	ISSUED FOR REVIEW		2015-02-03
PRELIMINARY			
1:24,000			
<div><div></div><div>0</div><div>0.3</div><div>0.6 Miles</div><div></div></div>			
DATE: 2015-02-03		PROJECTION: NAD83 STATEPLANE AK 4 5004 FEET	

PREPARED BY: exp Energy Services Inc.	
t: +1.907.868.1185 f: 1.907.868.1846 3800 Centerpoint Dr. Suite 200 Anchorage, AK 99503 U.S.A. www.exp.com	
• BUILDINGS • EARTH & ENVIRONMENT • ENERGY • • INDUSTRIAL • INFRASTRUCTURE • SUSTAINABILITY •	
DWG: WETLAND-A-LIQ-4	SHEET: 4

The information contained herein is for informational or planning purposed only. It does not nor should it be deemed to be an offer, request or proposals for rights or occupation of any kind. The Alaska LNG Project Participants and their respective officers, employees and agents, make no warranty, implied or otherwise, nor accept any liability, as to the accuracy or completeness of the information contained in these documents, drawings or electronic files.

PREPARED BY:

exp Energy Services Inc.

t: +1.907.868.1185 | f: +1.907.868.1846
3800 Centerpoint Dr. Suite 200
Anchorage, AK 99503
U.S.A.

www.exp.com



- BUILDINGS • EARTH & ENVIRONMENT • ENERGY •
- INDUSTRIAL • INFRASTRUCTURE • SUSTAINABILITY •