

Alaska LNG Project

Preliminary Facility Locations  
GTP - LNG Sites


Resource Report 1  
Appendix B

The information contained herein is for informational or planning purposes only. It does not nor should it be deemed to be an offer, request or proposals for rights or occupation of any kind. The Alaska LNG Project Participants and their respective officers, employees and agents, make no warranty, implied or otherwise, nor accept any liability, as to the accuracy or completeness of the information contained in these documents, drawings or electronic files.

ALASKA LNG PROJECT			
Preliminary Facility Locations - GTP - LNG Sites			
BOROUGH:	-	DRAWN BY:	RC
STATE:	ALASKA	CHECKED BY:	JS
REV. NO.:	REVISION	DATE	
0	ISSUED FOR REVIEW	2015-01-16	
PRELIMINARY			

PREPARED BY:  
**exp** Energy Services Inc.

t: +1.907.868.1185 | f: +1.907.868.1846  
3800 Centerpoint Dr. Suite 200  
Anchorage, AK 99503  
U.S.A.  
[www.exp.com](http://www.exp.com)



BUILDINGS • EARTH & ENVIRONMENT • ENERGY •  
INDUSTRIAL • INFRASTRUCTURE • SUSTAINABILITY •

DATE: 2015-02-04	PROJECTION: NAD83 STATE PLANE AK 4 5004 FEET	DWG: PRE-FEED-GTP-LNG-COVER	SHEET: GTP-LNG-COVER
------------------	--	-----------------------------	----------------------

The information contained herein is for informational or planning purposed only. It does not nor should it be deemed to be an offer, request or proposals for rights or occupation of any kind. The Alaska LNG Project Participants and their respective officers, employees and agents, make no warranty, implied or otherwise, nor accept any liability, as to the accuracy or completeness of the information contained in these documents, drawings or electronic files.

**PREPARED BY:**  
**exp** Energy Services Inc.

t: +1.907.868.1185 | f: +1.907.868.1846  
3800 Centerpoint Dr. Suite 200  
Anchorage, AK 99503  
U.S.A.  
[www.exp.com](http://www.exp.com)



---

• BUILDINGS • EARTH & ENVIRONMENT • ENERGY •

• INDUSTRIAL • INFRASTRUCTURE • SUSTAINABILITY •



A  
r  
c  
t  
i  
c  
  
O  
c  
e  
a  
n

Pg. 1  
Pg. 2

NORTH  
SLOPE  
BOROUGH

The information contained herein is for informational or planning purposes only. It does not nor should it be deemed to be an offer, request or proposals for rights or occupation of any kind. The Alaska LNG Project Participants and their respective officers, employees and agents, make no warranty, implied or otherwise, nor accept any liability, as to the accuracy or completeness of the information contained in these documents, drawings or electronic files.

ALASKA LNG PROJECT			
Contaminated Sites - GTP Site			
BOROUGH: NORTH SLOPE		DRAWN BY: CC	
STATE: ALASKA		CHECKED BY: JS	
REV. NO.:	REVISION		DATE
0	ISSUED FOR REVIEW		2015-02-04
PRELIMINARY			

PREPARED BY:  
exp Energy Services Inc.

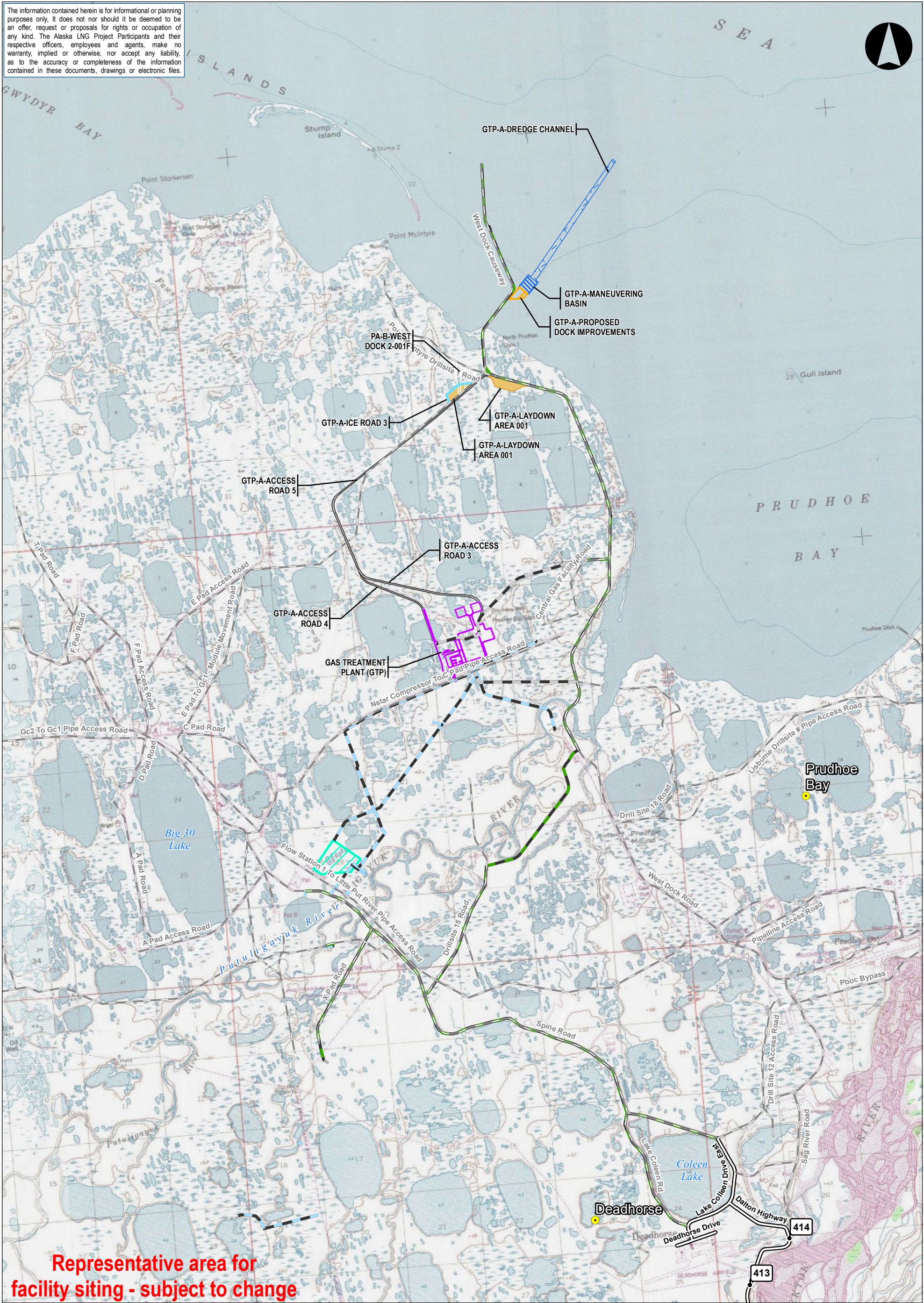
t: +1.850.385.5441 | f: +1.850.385.5523  
1300 Metropolitan Blvd.  
Tallahassee, FL 32308  
U.S.A.  
www.exp.com



• BUILDINGS • EARTH & ENVIRONMENT • ENERGY •  
• INDUSTRIAL • INFRASTRUCTURE • SUSTAINABILITY •



The information contained herein is for informational or planning purposes only. It does not nor should it be deemed to be an offer, request or proposals for rights or occupation of any kind. The Alaska LNG Project Participants and their respective officers, employees and agents, make no warranty, implied or otherwise, nor accept any liability, as to the accuracy or completeness of the information contained in these documents, drawings or electronic files.



- Legend**
- Proposed GTP Site
  - Proposed Reservoir
  - Primary Road
  - Secondary Road
  - Access Road
    - Primary
    - Primary, Gravel
    - Temporary, Gravel
    - Temporary, Ice road

ALASKA LNG PROJECT					
Appendix 1B - GTP Facility					
BOROUGH:		NORTH SLOPE	DRAWN BY:		CC
STATE:		ALASKA	CHECKED BY:		JS
REV. NO.:		REVISION		DATE	
0		ISSUED FOR REVIEW		2015-02-04	
PRELIMINARY					
1:75,000					
<div><div></div><div>0</div><div>1</div><div>2 Miles</div></div>					
DATE:		2015-02-04			
PROJECTION:		NAD83 STATEPLANE AK 4 5004 FEET			

PREPARED BY:  
**exp** Energy Services Inc.  
t:1.907.868.1185 | f:1.907.868.1846  
3800 Centerpoint Dr. Suite 200  
Anchorage, AK 99503  
U.S.A.  
www.exp.com

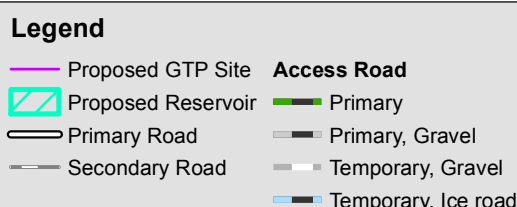
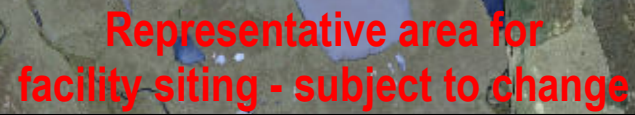


• BUILDINGS • EARTH & ENVIRONMENT • ENERGY •  
• INDUSTRIAL • INFRASTRUCTURE • SUSTAINABILITY •

DWG: APP A-T-GTP-1

SHEET: 1





**PREPARED BY:**  
**exp** Energy Services Inc.  
 t: +1.907.868.1185 | f: +1.907.868.1846  
 3800 Centerpoint Dr. Suite 200  
 Anchorage, AK 99503  
 U.S.A.  
[www.exp.com](http://www.exp.com)

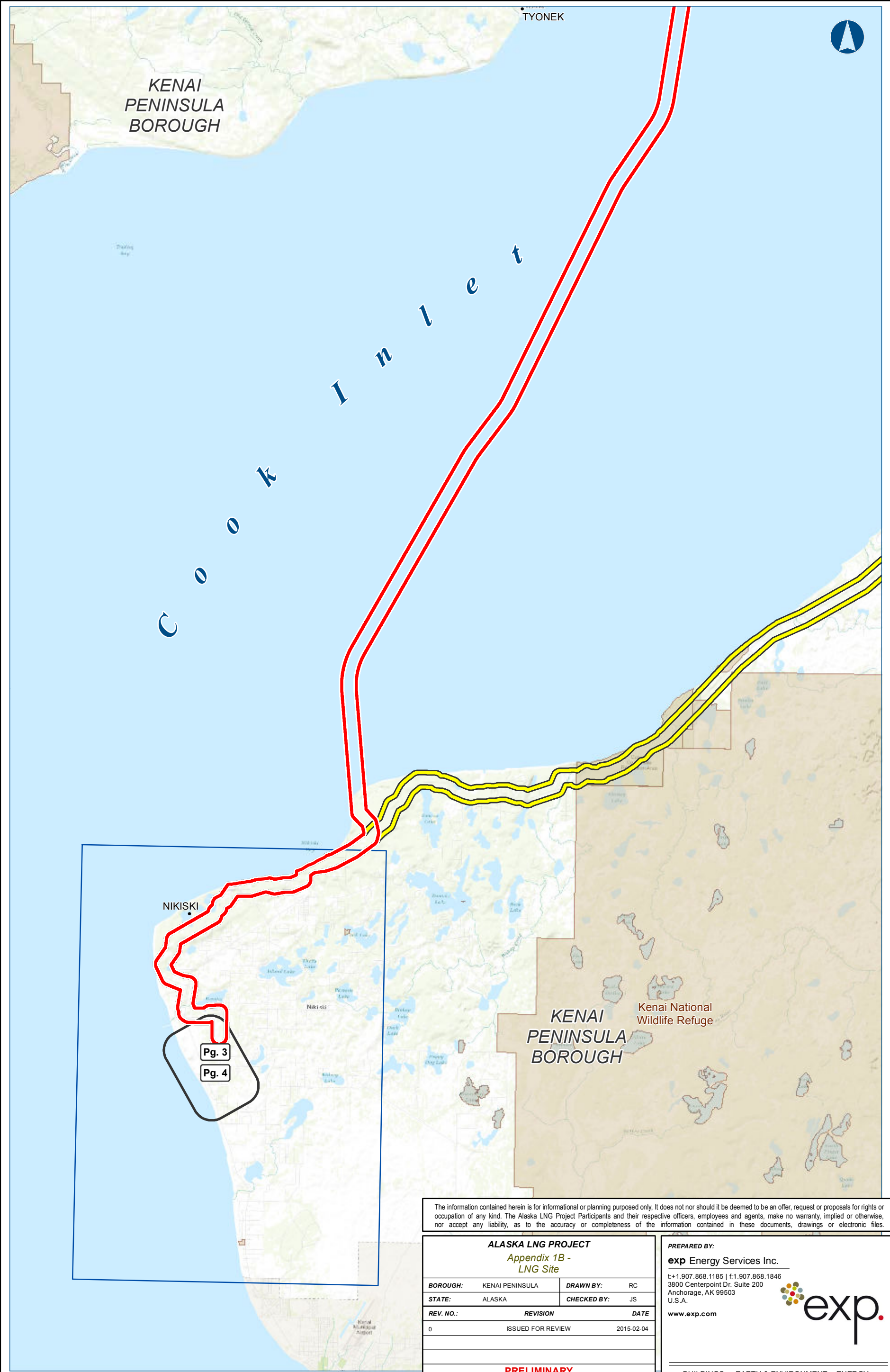



---

• BUILDINGS • EARTH & ENVIRONMENT • ENERGY •  
 • INDUSTRIAL • INFRASTRUCTURE • SUSTAINABILITY •

<b>DWG:</b> APP A-A-GTP-2	<b>SHEET:</b> 2
---------------------------	-----------------





The information contained herein is for informational or planning purposes only. It does not nor should it be deemed to be an offer, request or proposals for rights or occupation of any kind. The Alaska LNG Project Participants and their respective officers, employees and agents, make no warranty, implied or otherwise, nor accept any liability, as to the accuracy or completeness of the information contained in these documents, drawings or electronic files.

ALASKA LNG PROJECT			
Appendix 1B - LNG Site			
BOROUGH: KENAI PENINSULA		DRAWN BY: RC	
STATE: ALASKA		CHECKED BY: JS	
REV. NO.:		REVISION	
		DATE	
0		ISSUED FOR REVIEW	
		2015-02-04	
PRELIMINARY			

PREPARED BY:

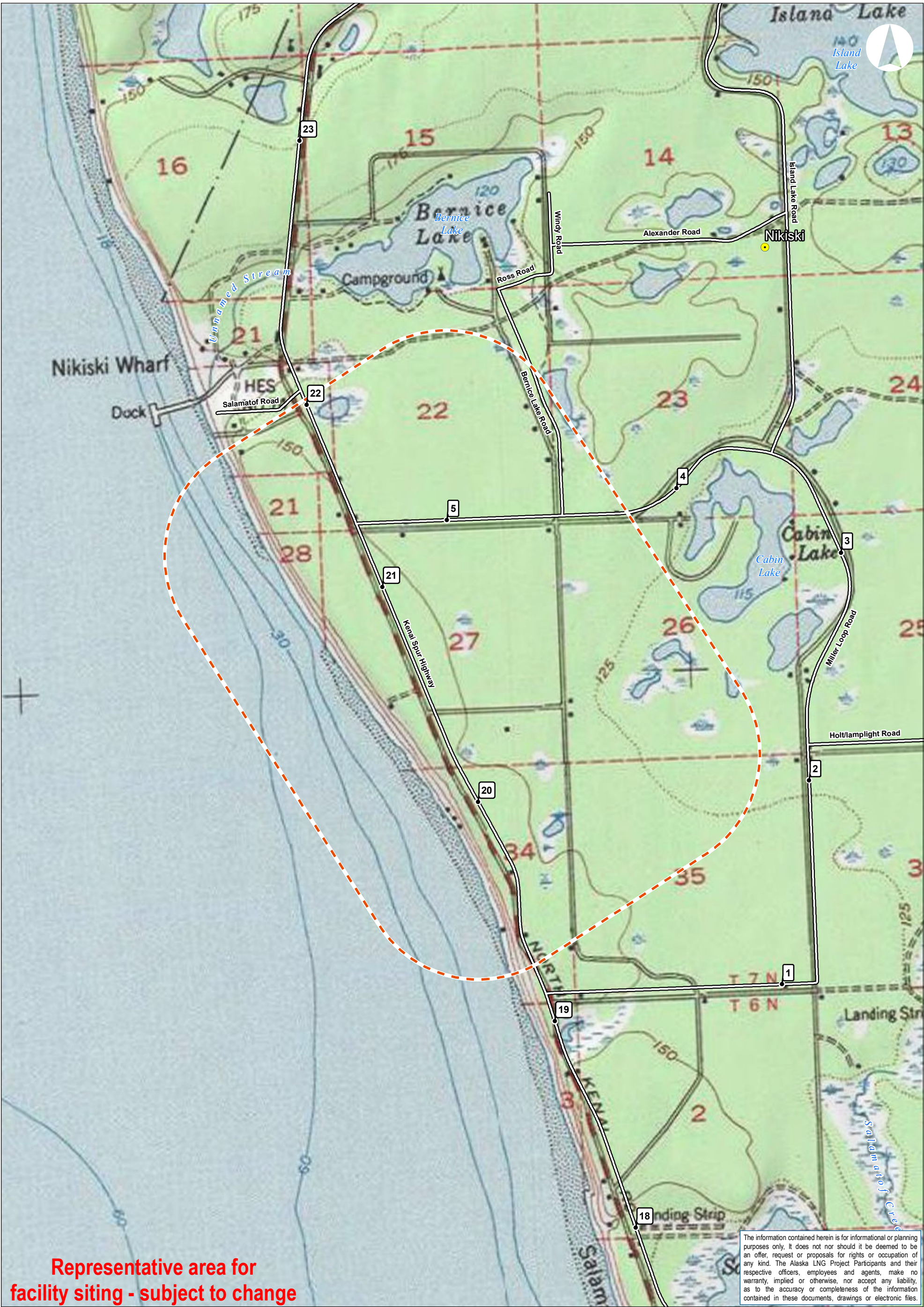
**exp** Energy Services Inc.

t: +1.907.868.1185 | f: +1.907.868.1846  
3800 Centerpoint Dr. Suite 200  
Anchorage, AK 99503  
U.S.A.

[www.exp.com](http://www.exp.com)

• BUILDINGS • EARTH & ENVIRONMENT • ENERGY •  
• INDUSTRIAL • INFRASTRUCTURE • SUSTAINABILITY •





Representative area for  
facility siting - subject to change

The information contained herein is for informational or planning purposes only. It does not nor should it be deemed to be an offer, request or proposals for rights or occupation of any kind. The Alaska LNG Project Participants and their respective officers, employees and agents, make no warranty, implied or otherwise, nor accept any liability, as to the accuracy or completeness of the information contained in these documents, drawings or electronic files.

Vicinity Map



Legend

- Liquefaction Facility Area
- Populated Area
- Primary Road
- Secondary Road

ALASKA LNG PROJECT

Appendix 1B - Liquefaction Facility

BOROUGH:	NORTH SLOPE	DRAWN BY:	CC
STATE:	ALASKA	CHECKED BY:	JS
REV. NO.:	REVISION	DATE	
0	ISSUED FOR REVIEW	2015-02-04	

PRELIMINARY

1:24,000 0 0.3 0.6 Miles

DATE: 2015-02-04 PROJECTION: NAD83 STATEPLANE AK 4 5004 FEET

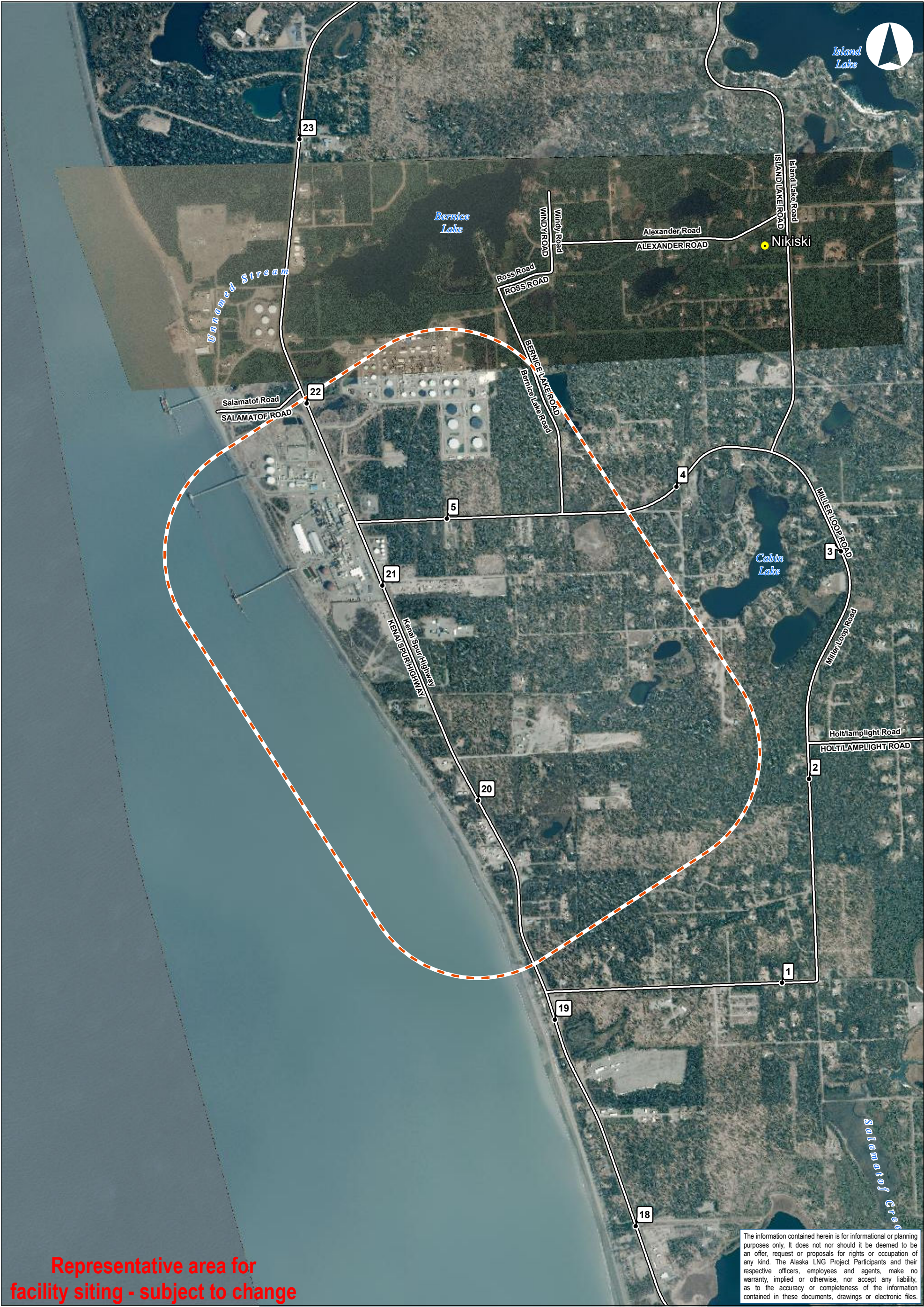
PREPARED BY:  
**exp** Energy Services Inc.  
t: +1.907.868.1185 | f: +1.907.868.1846  
3800 Centerpoint Dr. Suite 200  
Anchorage, AK 99503  
U.S.A.  
[www.exp.com](http://www.exp.com)



• BUILDINGS • EARTH & ENVIRONMENT • ENERGY •  
• INDUSTRIAL • INFRASTRUCTURE • SUSTAINABILITY •

DWG: APP A-T-LNG-3 SHEET: 3





Representative area for  
facility siting - subject to change

The information contained herein is for informational or planning purposes only. It does not nor should it be deemed to be an offer, request or proposals for rights or occupation of any kind. The Alaska LNG Project Participants and their respective officers, employees and agents, make no warranty, implied or otherwise, nor accept any liability, as to the accuracy or completeness of the information contained in these documents, drawings or electronic files.

Vicinity Map



Legend

- Liquefaction Facility Area
- Populated Area
- Primary Road
- Secondary Road

ALASKA LNG PROJECT					
Appendix 1B - Liquefaction Facility					
BOROUGH: NORTH SLOPE		DRAWN BY: CC			
STATE: ALASKA		CHECKED BY: JS			
REV. NO.:		REVISION		DATE	
0		ISSUED FOR REVIEW		2015-02-04	
PRELIMINARY					
1:24,000					
0 0.3 0.6 Miles					
DATE: 2015-02-04		PROJECTION: NAD83 STATEPLANE AK 4 5004 FEET			

PREPARED BY:  
**exp** Energy Services Inc.  
t: +1.907.868.1185 | f: +1.907.868.1846  
3800 Centerpoint Dr. Suite 200  
Anchorage, AK 99503  
U.S.A.  
[www.exp.com](http://www.exp.com)



• BUILDINGS • EARTH & ENVIRONMENT • ENERGY •  
• INDUSTRIAL • INFRASTRUCTURE • SUSTAINABILITY •

DWG: APP A-A-LNG-4

SHEET: 4



The information contained herein is for informational or planning purposed only. It does not nor should it be deemed to be an offer, request or proposals for rights or occupation of any kind. The Alaska LNG Project Participants and their respective officers, employees and agents, make no warranty, implied or otherwise, nor accept any liability, as to the accuracy or completeness of the information contained in these documents, drawings or electronic files.

PREPARED BY:

exp Energy Services Inc.

t: +1.907.868.1185 | f: +1.907.868.1846  
3800 Centerpoint Dr. Suite 200  
Anchorage, AK 99503  
U.S.A.

www.exp.com



- BUILDINGS • EARTH & ENVIRONMENT • ENERGY •
- INDUSTRIAL • INFRASTRUCTURE • SUSTAINABILITY •