

OFI/ALYESKA
TERRAIN STABILITY MEETING
AGENDA

DECEMBER 15 AND 16, 1981, 8:30 A.M.

HOUSTON, TEXAS

- I. INTRODUCTION - John Watts/Zaheer Jan
- II. DESIGN CRITERIA - C. L. Vita
 - A. Thaw Plug and Unfrozen Slope Stability
 1. Static
 2. Dynamic
 - B. Liquefaction (Slopes \leq 2%)
- III. BASIC PHILOSOPHY - Balanced Analysis/Design- C. L. Vita
- IV. REVIEW OF TERRAIN STABILITY ASSESSMENT PROCESS - (Overview) -C. L. Vita
 - A. Route Geotechnical characterization and Classification (RG2C)
 - B. Stage I. - Preliminary - Dan Mageau
 - C. Stage II.- Intermediate - Dan Mageau
 - D. Stage III- Site-Specific - Dan Mageau
- IV. STATUS OF THE NINE TERRAIN STABILITY CASE SITES - C. L. Vita
- V. REVIEW OF THE NINE TERRAIN STABILITY CASE SITES- N. Paruvakat

LIST OF ATTENDEES

OFI/ALYESKA TERRAIN STABILITY MEETING

Houston, December 16, 1981

<u>ATTENDEE</u>	<u>AFFILIATION</u>	<u>PHONE NO.</u>
1. Z. A. Jan	NWA-Houston	(713) 235-0168
2. J. P. Cushing	NWA-Houston	(713) 235-0169
3. Dave Shults	Alyeska	(713) 656-6615
4. Bala Asawa	Fluor-Houston	(713) 235-0142
5. Ed Townsley	Fluor-Irvine	(714) 975-7361
6. Tom Krzewiuski	Alyeska/Dames&Moore	(907) 279-0673
7. Neville Donovan	Dames & Moore	(415) 433-0700
8. Polo Velasco	GIEC/MB, JV	(713) 235-0185
9. Earl Ellis	OFI/Anchorage	(907) 271-3668
10. Earle Ausman	OFI/Irvine	(714) 836-2393
11. Lynn J. Harnisch	SPCD-DOT/PF	(907) 456-4835
12. Francis H. Sayles	OFI/Irvine	(714) 836-2393
13. Jacques, Roy	SDC/UII/OFF	(714) 833-9935
14. J. A. Maple	Alyeska	(213) 656-2192
15. Daniel Mageau	R&M-Houston	(713) 235-0115
16. N. Paruvakat	R&M-Houston	(713) 235-0123
17. Francis Yip	Fluor-Houston	(713) 235-0159
18. Vincent Del Greco	NWA-Houston	(713) 235-0170
19. Charles L. Vita	R&M-Irvine	(714) 975-3398
20. J. E. Myrick	NWA-Irvine	(714) 975-4229
21. J. M. Viehweg	NWA-Houston	(713) 235-0163

LIST OF ATTENDEES

OFI/ALYESKA TERRAIN STABILITY MEETING

Houston, December 16, 1981

<u>ATTENDEE</u>	<u>AFFILIATION</u>	<u>PHONE NO.</u>
1. Z. A. Jan	NWA-Houston	(713) 235-0168
2. J. P. Cushing <i>Jack Houston</i>	NWA-Houston	(713) 235-0169
3. Dave Shults <i>-Idaho</i>	Alyeska	(713) 656-6615
4. Bala Asawa	Fluor-Houston	(713) 235-0142
5. Ed Townsley	Fluor-Irvine	(714) 975-7361
6. Tom Krzewinski	Alyeska/Dames&Moore	(907) 279-0673
7. Neville Donovan	Dames & Moore	(415) 433-0700
8. Polo Velasco	GIEC/MB, JV	(713) 235-0185
9. Earl Ellis	OFI/Anchorage	(907) 271-3668
10. Earle Ausman	OFI/Irvine	(714) 836-2393
11. Lynn J. Harnisch	SPCD-DOT/PF	(907) 456-4835
12. Francis H. Sayles	OFI/Irvine	(714) 836-2393
13. Jacques, Roy	SDC/UIII/OFF	(714) 833-9935
14. J. A. Maple	Alyeska	(213) 656-2192
✓ 15. Daniel Mageau	R&M-Houston	(713) 235-0115
16. N. Paruvakat	R&M-Houston	(713) 235-0123
17. ^{Dr} Francis Yip	Fluor-Houston	(713) 235-0159
18. Vincent Del Greco	NWA-Houston	(713) 235-0170
19. Charles L. Vita	R&M-Irvine	(714) 975-3398
20. J. E. Myrick	NWA-Irvine	(714) 975-4229
21. J. M. Viehweg	NWA-Houston	(713) 235-0163

OFI/ALYESKA

TERRAIN STABILITY MEETING

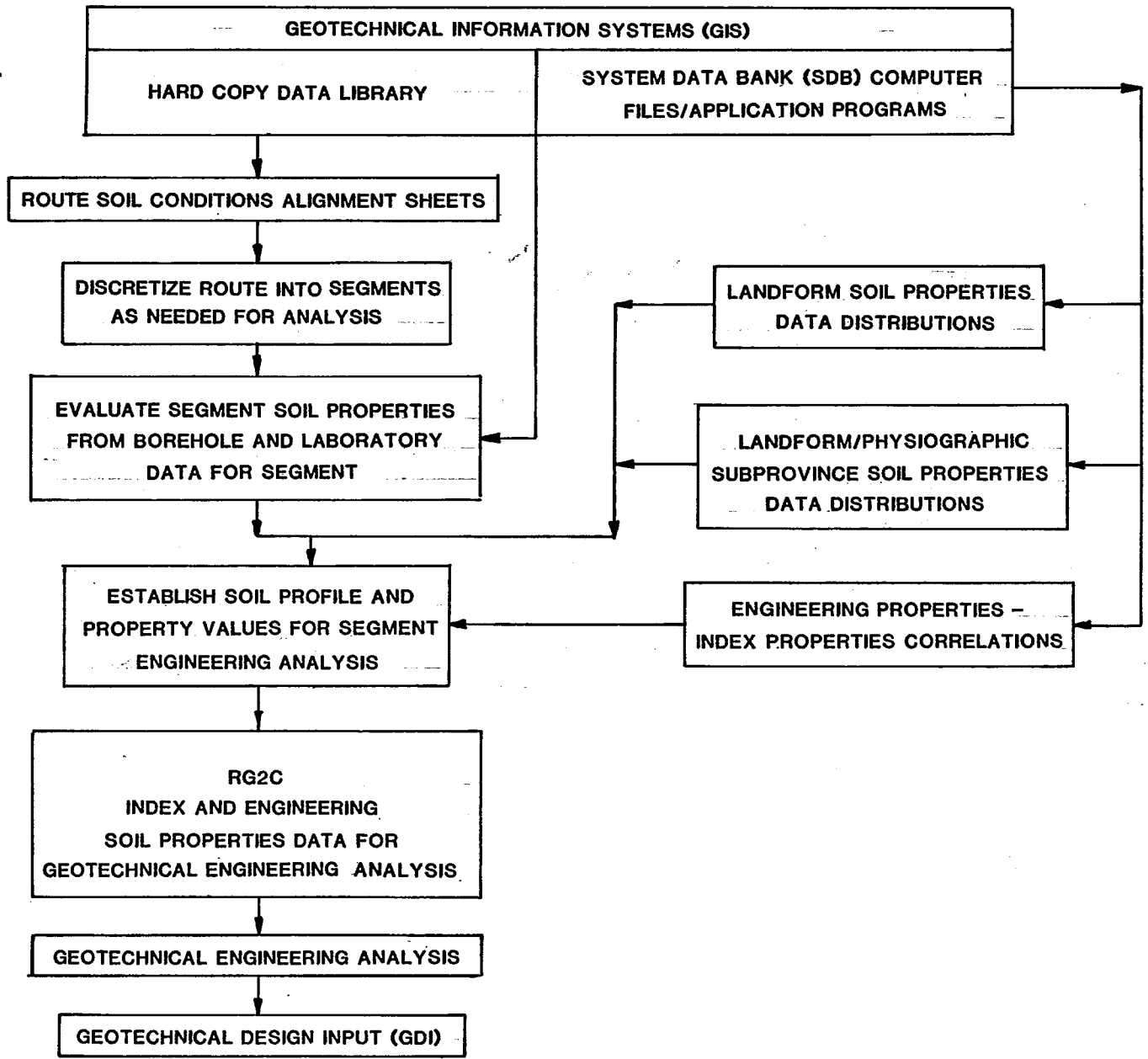
HOUSTON, DEC. 15, 1981

Dave Shults	Alyeska
Jack Cushing	NWA-Houston
Tom Krzewinski	Alyeska/Domes & Moore
Neville Donovan	Domes & Moore
J. A. Maple	Alyeska
Earl Ellis	OFI
Earle Ausman	OFI
Lynn J. Harnisch	SPCO-DOT/PF
Francis Sayles	OFI
Jacques Roy	UII/SDC/OFI
Francis Yip	Fluor
Zaheer Jan	NWA-Houston
John Myrick	NWA
Michael C. Metz	ARCO
P. Velasco	GIEC/MB JV
Vincent Del Greco	NWA-Houston
N. Paruvakat	R & M
Charles L. Vita	R & M
Daniel Mageau	R & M
John Watts	NWA-Houston
John Viehweg	NWA-Houston

Nando

Dec 15th

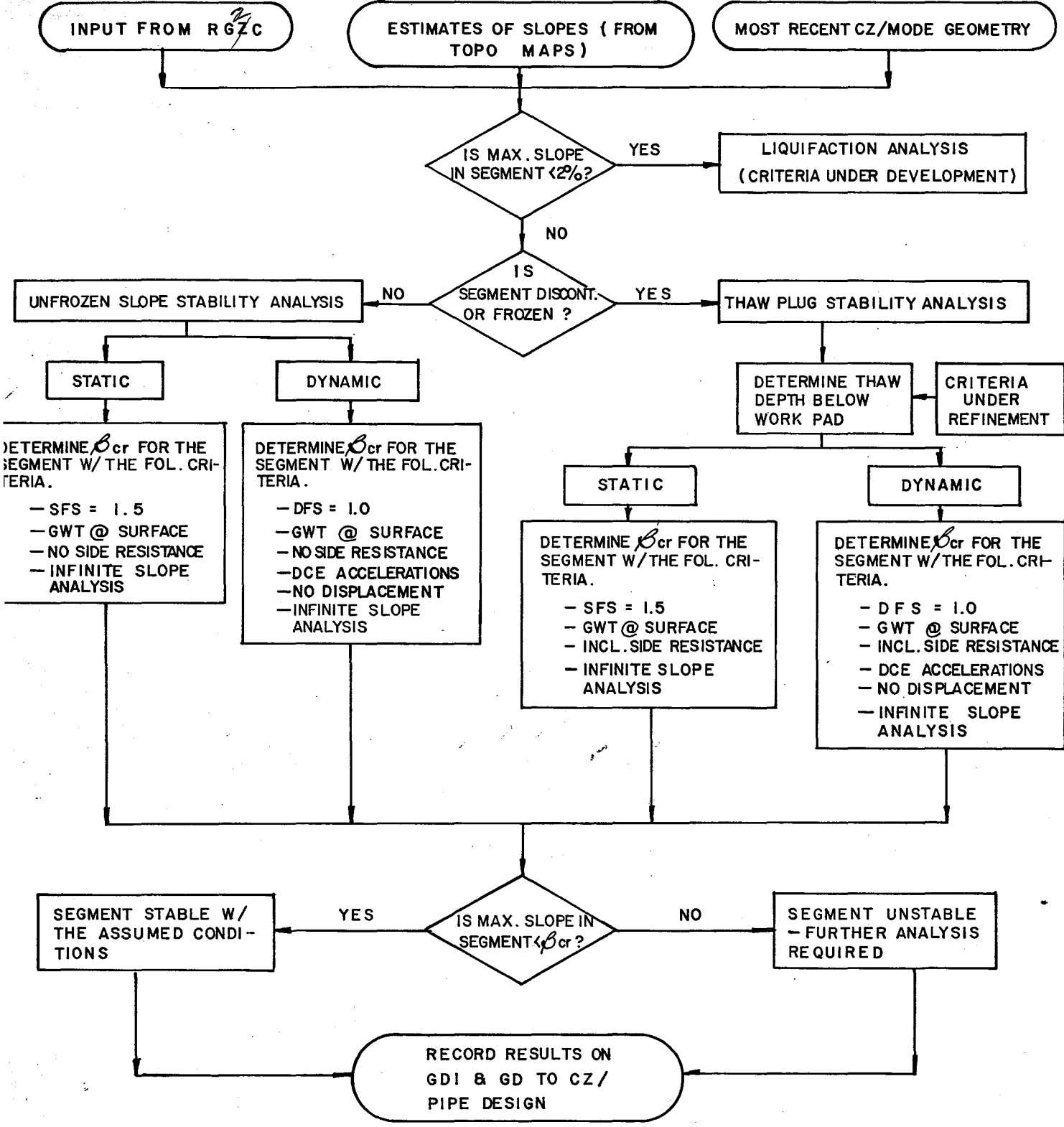
SIMPLIFIED ROUTE GEOTECHNICAL CHARACTERIZATION AND CLASSIFICATION (RG2C) PROCESS



De-15

SIMPLIFIED TERRAIN STABILITY ASSESMENT PROCESS

STAGE I PRELIMINARY (mostly geotec design info)



Velg same ϕ & ρ is another done by RGZC process any way

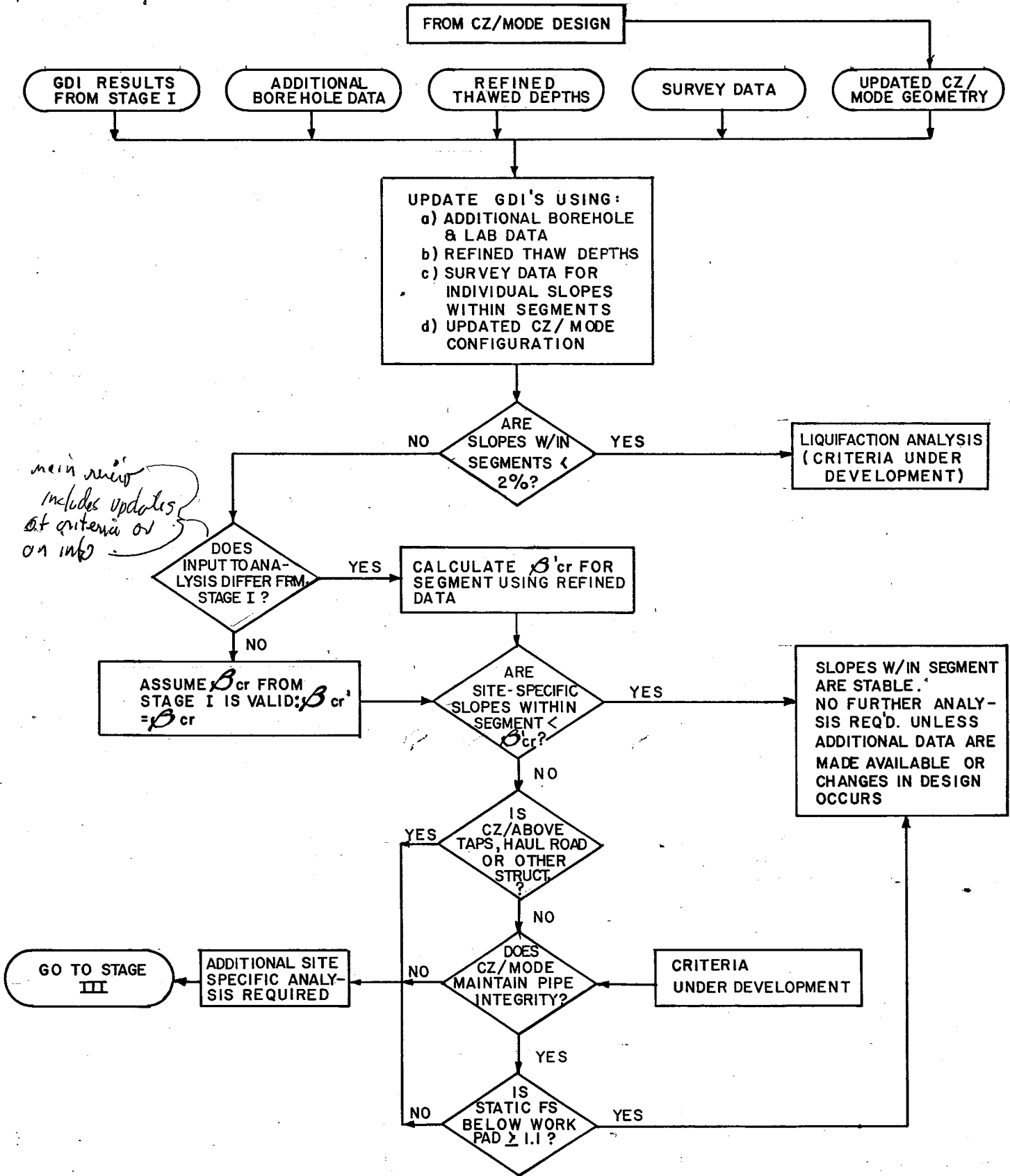
Dec 15

Stage first look @ adjacent systems

SIMPLIFIED TERRAIN STABILITY PROCESS — BLOCK DIAGRAM

Screening phase

Preliminary design available STAGE II (INTERMEDIATE)

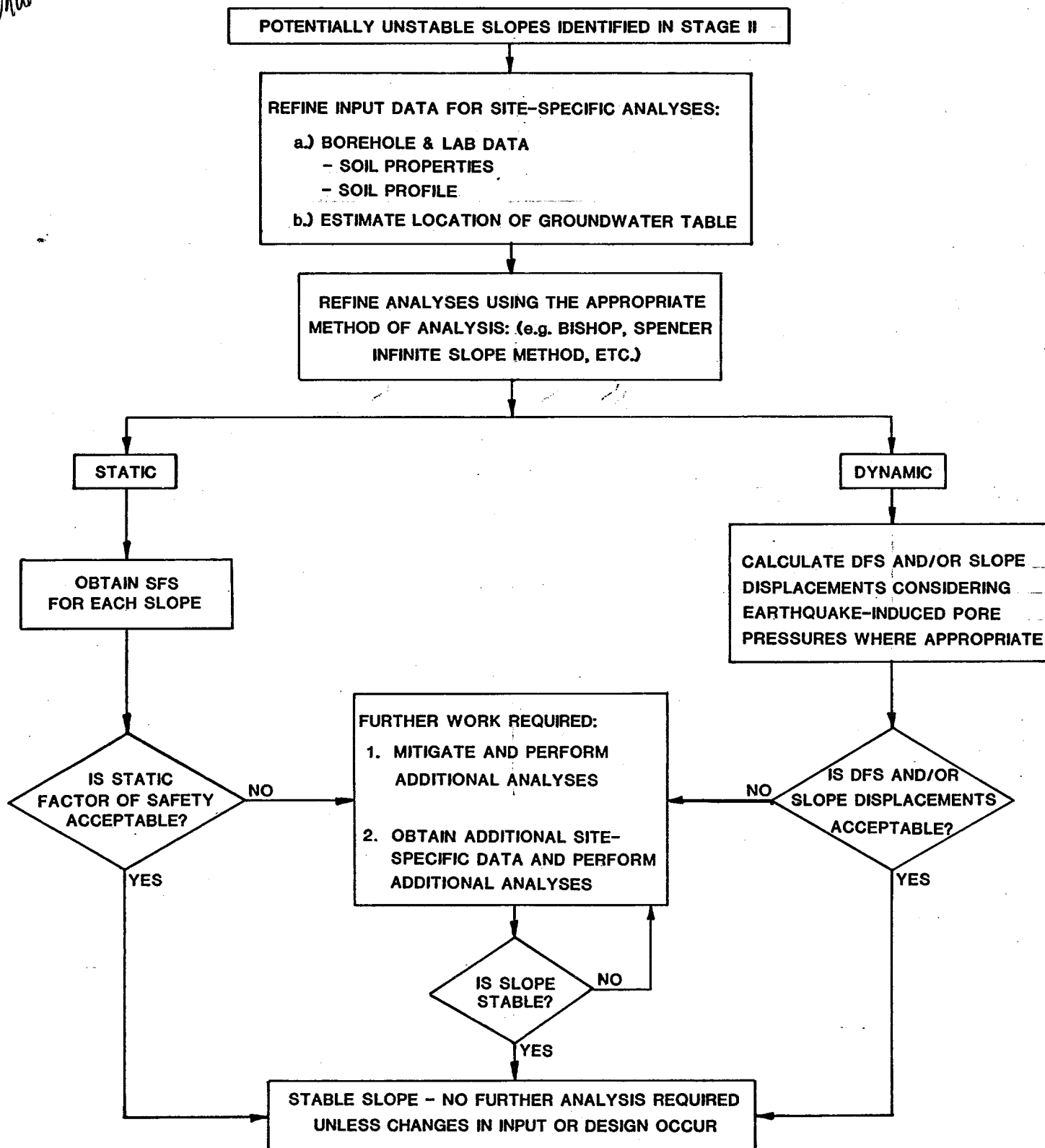


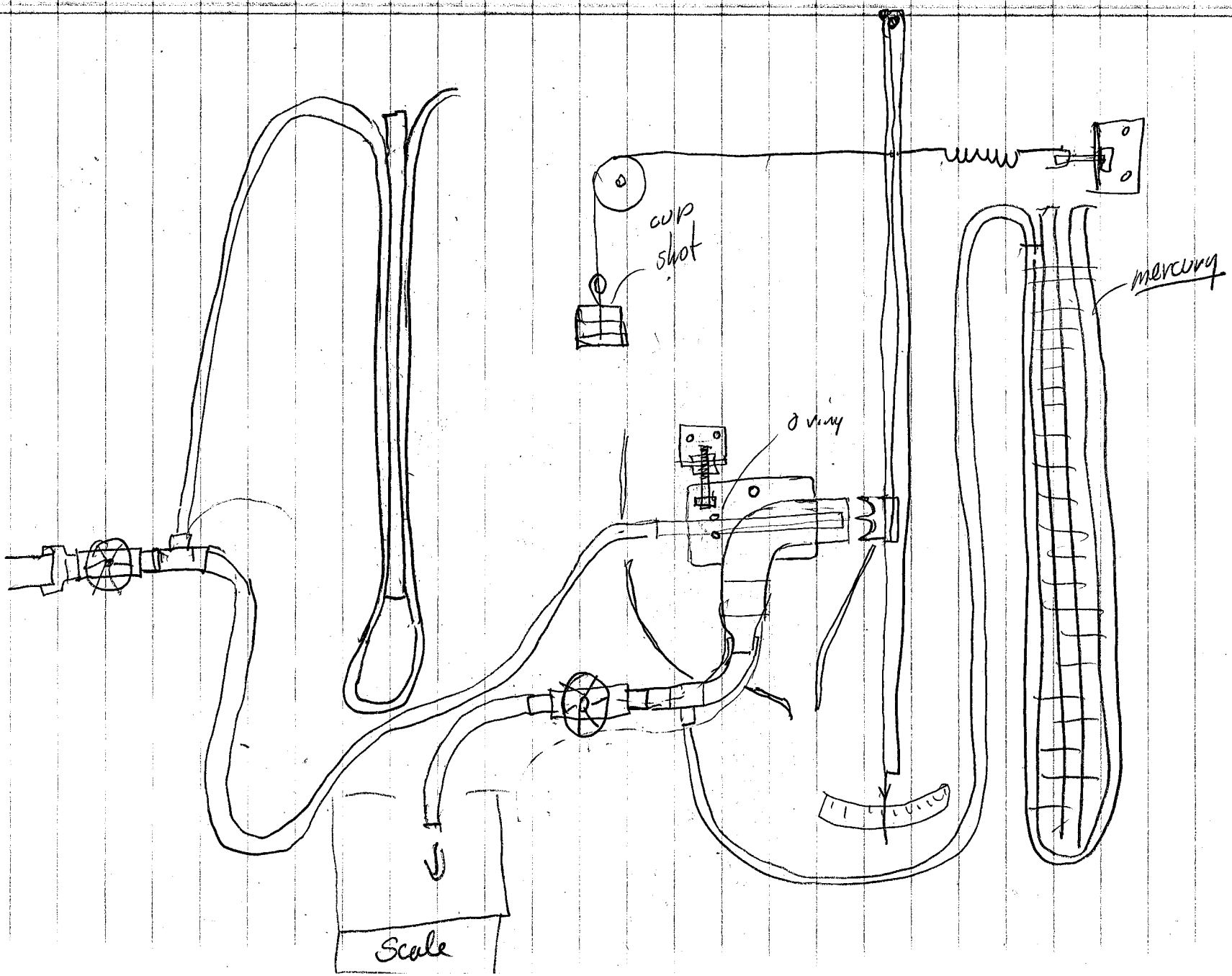
main menu includes updates of criteria or on info

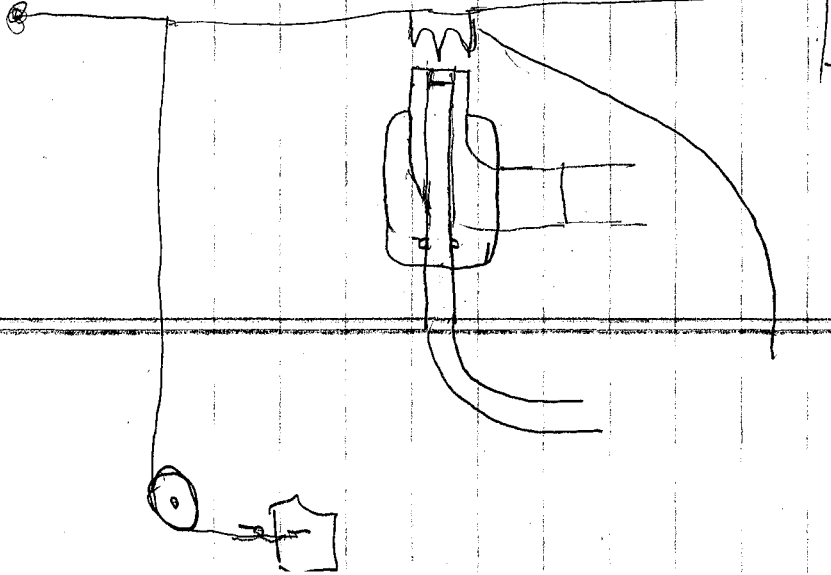
Still under development

Dev 15

SIMPLIFIED TERRAIN STABILITY ASSESSMENT PROCESS STAGE III (SITE - SPECIFIC)







mmmm

