

**Proposed Centreline**

- Storage Yards
- Compressor Stations
- Material Sites
- River Staging Areas
- Access Roads

**TAPS Oil Pipeline**

- Other Pipelines
- Powerlines
- State Highways
- Airports
- Camps
- Landmarks
- Selected Wetlands

**Land Ownership**

- Federal (100)
- Federal: COE (1CE)
- Private (200)
- State (300)
- State: MHT (3MH)
- State: UA (3UA)
- Borough (400)

REV	DATE	REVISIONS	BY	CHECKED BY	PROJ. MANAGER	CUST. APPROVAL
4B	5/21/04	Compressor station sites for initial annual average capacity of 4,500 MMSCFD added; MP 0.0 to MP 1.0 realigned for Point of Origin relocation.	EG	PAC	KM	
4A	5/13/02	Compiled and recreated in digital form based on rev. 3 Ownership sheets, rev. 3 Civil sheets, and rev. 4 Pipeline sheets. Land ownership updated. Background map changed to USGS quads.	IWM	MTA	MRF	

**ALASKAN NORTHWEST NATURAL GAS TRANSPORTATION CO.**

**Baker**  
Michael Baker Jr., Inc.  
A Unit of Michael Baker Corporation  
4601 Business Park Blvd., Suite 42  
Anchorage, Alaska 99503  
Phone: (907) 273-1600  
Fax: (907) 273-1699

This document is the property of the Alaskan Northwest Natural Gas Transportation Company (ANNATC), a partnership, or one or more of its associated companies. It contains proprietary and confidential information. The unauthorized use, reproduction, and/or disclosure of this information is prohibited pursuant to AS 40.25.120(a)(4) and by applicable State and Federal laws including, but not limited to: the Alaska Land Act, AS 38.05.035(a)(9); Article I, Section 22 of the Alaska Constitution; the Federal Trade Secrets Act, 18 USC § 1905; and the Federal Freedom of Information Act, Exemption 4, 5 USC 552(b)(4). Public access to this document also may be limited by the Federal Energy Regulatory Commission Statement of Policy on Treatment of Previously Public Documents, 37 FR 61,030 (2001). In addition, this document is protected as an unpublished work under the United States Copyright Law, 17 USC § 101 et seq. All rights are reserved; unauthorized reproduction is prohibited. ANNATC should be provided with written notice of any request for this document (other than a request from a State agency or official), as well as a reasonable opportunity to object to any proposed release of this document.

**NATURAL GAS PIPELINE**

**LAND USE AND OWNERSHIP**

M.P. 676.72 to M.P. 682.54

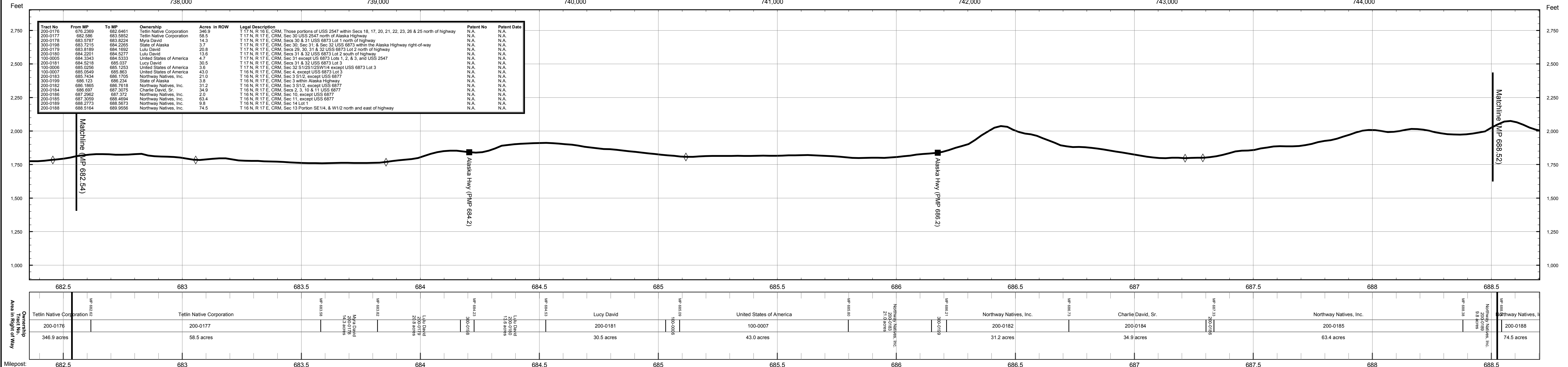
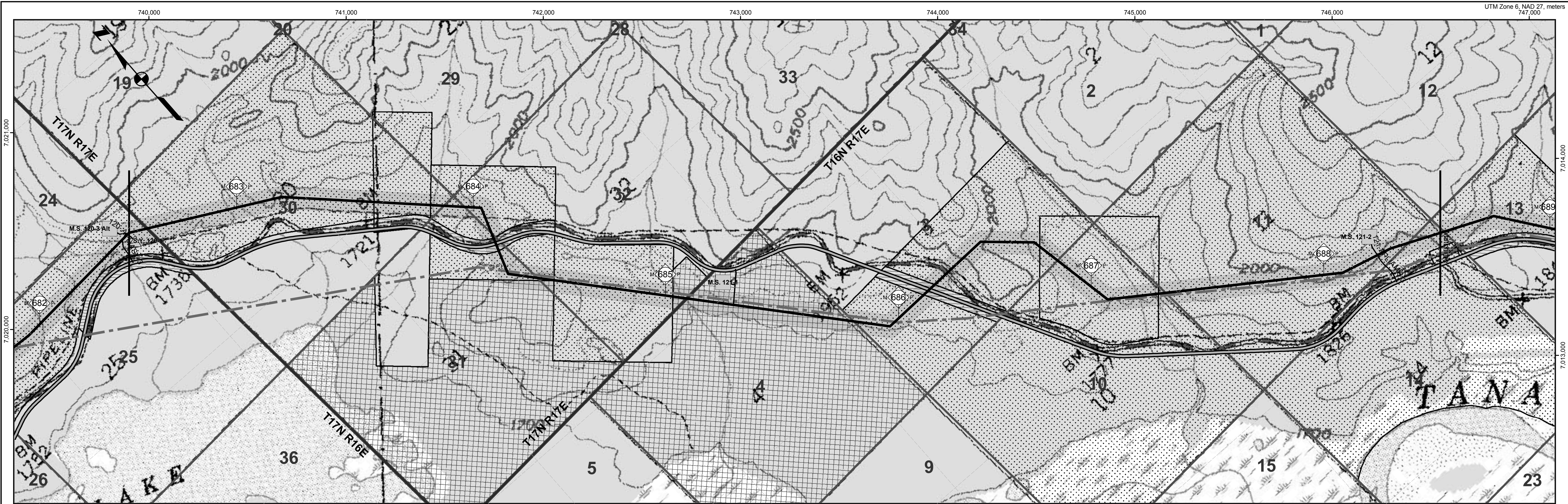
**ALASKA SEGMENT OF THE ALASKA NATURAL GAS TRANSPORTATION SYSTEM**

0 500 1,000 2,000 3,000 4,000 Feet

DRAWING NO.: 4680-16-00-B-O-120

REV.: 4





**Proposed Centreline**

**Storage Yards**

**Compressor Stations**

**Material Sites**

**River Staging Areas**

**Access Roads**

**TAPS Oil Pipeline**

**Other Pipelines**

**Powerlines**

**State Highways**

**Airports**

**Camps**

**Landmarks**

**Selected Wetlands**

**Federal (100)**

**Federal: COE (1CE)**

**Private (200)**

**State (300)**

**State: MHT (3MH)**

**State: UA (3UA)**

**Borough (400)**

REV	DATE	REVISIONS	BY	CHECKED BY	PROJ. MANAGER	CUST. APPROVAL
4B	5/21/04	Compressor station sites for initial annual average capacity of 4,500 MMSCFD added; MP 0.0 to MP 1.0 realigned for Point of Origin relocation.	EG	PAC	KM	
4A	5/13/02	Compiled and recreated in digital form based on rev. 3 Ownership sheets, rev. 3 Civil sheets, and rev. 4 Pipeline sheets. Land ownership updated. Background map changed to USGS quads.	IWM	MTA	MRF	

**ALASKAN NORTHWEST**  
**NATURAL GAS TRANSPORTATION CO.**

**Baker**  
Michael Baker Jr., Inc.  
A Unit of Michael Baker Corporation  
4601 Business Park Blvd., Suite 42  
Anchorage, Alaska 99503  
Phone: (907) 273-1600  
Fax: (907) 273-1699

**NATURAL GAS PIPELINE**  
**LAND USE AND OWNERSHIP**  
M.P. 682.54 to M.P. 688.52

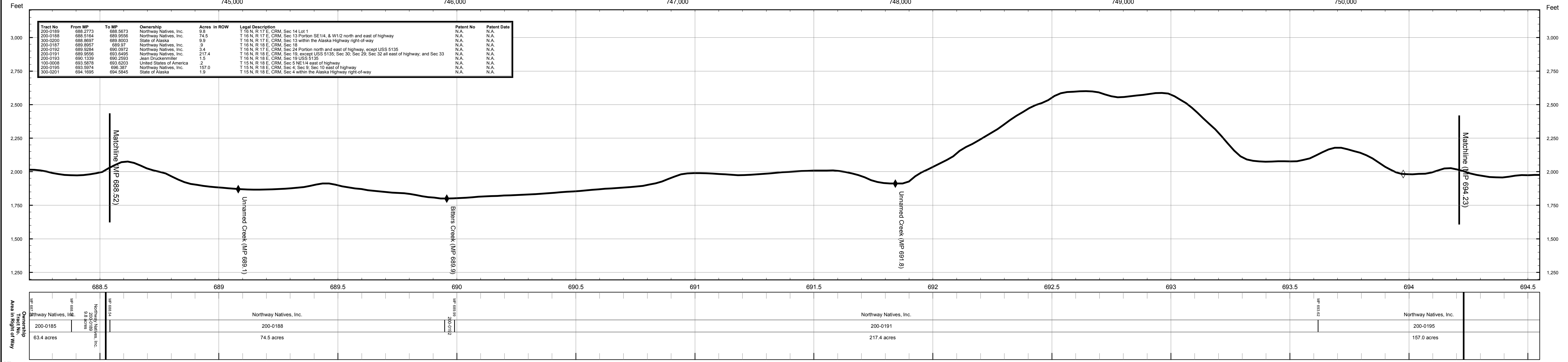
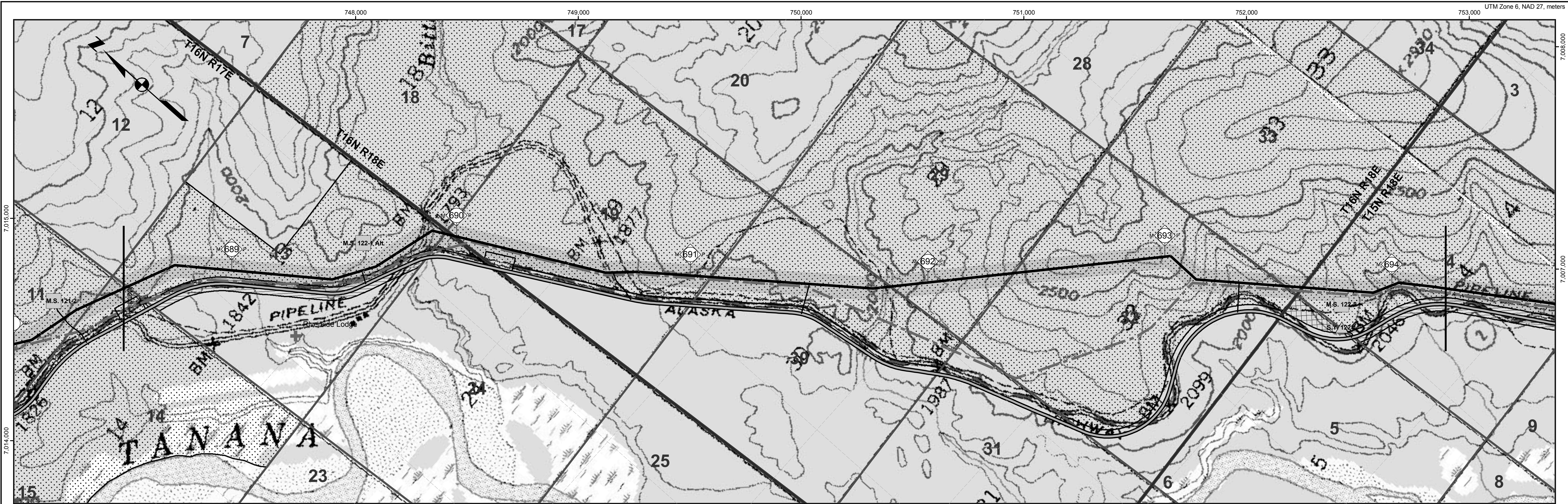
**ALASKA SEGMENT OF THE**  
**ALASKA NATURAL GAS TRANSPORTATION SYSTEM**

0 500 1,000 2,000 3,000 4,000 Feet

DRAWING NO.:  
**4680-16-00-B-O-121**

REV.:  
**4**





Map 688.52  
Map 689.23  
Map 694.23

Northway Natives, Inc.  
200-0185  
63.4 acres

Northway Natives, Inc.  
200-0188  
74.5 acres

Northway Natives, Inc.  
200-0191  
217.4 acres

Northway Natives, Inc.  
200-0195  
157.0 acres

**Proposed Centreline**

- Storage Yards
- Compressor Stations
- Material Sites
- River Staging Areas
- Access Roads

**TAPS Oil Pipeline**

- Other Pipelines
- Powerlines
- State Highways
- Airports
- Camps
- Landmarks
- Selected Wetlands

**Land Ownership**

- Federal (100)
- Federal: COE (1CE)
- Private (200)
- State (300)
- State: MHT (3MH)
- State: UA (3UA)
- Borough (400)

4B	5/21/04	Compressor station sites for initial annual average capacity of 4,500 MMSCFD added; MP 0.0 to MP 1.0 realigned for Point of Origin relocation.	EG	PAC	KM	
4A	5/13/02	Compiled and recreated in digital form based on rev. 3 Ownership sheets, rev. 3 Civil sheets, and rev. 4 Pipeline sheets. Land ownership updated. Background map changed to USGS quads.	IWM	MTA	MRF	
REV	DATE	REVISIONS	BY	CHECKED BY	PROJ. MANAGER	CUST. APPROVAL

**ALASKAN NORTHWEST  
NATURAL GAS TRANSPORTATION CO.**

**Baker**  
Michael Baker Jr., Inc.  
A Unit of Michael Baker Corporation  
4601 Business Park Blvd., Suite 42  
Anchorage, Alaska 99503  
Phone: (907) 273-1600  
Fax: (907) 273-1699

This document is the property of the Alaskan Northwest Natural Gas Transportation Company (ANNATC), a partnership, or one or more of its associated companies. It contains proprietary and confidential information. The unauthorized use, reproduction, and/or disclosure of this information is prohibited pursuant to AS 40.25.120(a)(4) and by applicable State and Federal laws including, but not limited to: the Alaska Land Act, AS 38.05.035(a)(9); Article I, Section 22 of the Alaska Constitution; the Federal Trade Secrets Act, 18 USC § 1905; and the Federal Freedom of Information Act, Exemption 4, 5 USC 552(b)(4). Public access to this document also may be limited by the Federal Energy Regulatory Commission Statement of Policy on Treatment of Previously Public Documents, 37 FR 61,030 (2001). In addition, this document is protected as an unpublished work under the United States Copyright Law, 17 USC § 101 et seq. All rights are reserved; unauthorized reproduction is prohibited. ANNATC should be provided with written notice of any request for this document (other than a request from a State agency or official), as well as a reasonable opportunity to object to any proposed release of this document.

**NATURAL GAS PIPELINE**

**LAND USE AND OWNERSHIP**

M.P. 688.52 to M.P. 694.23

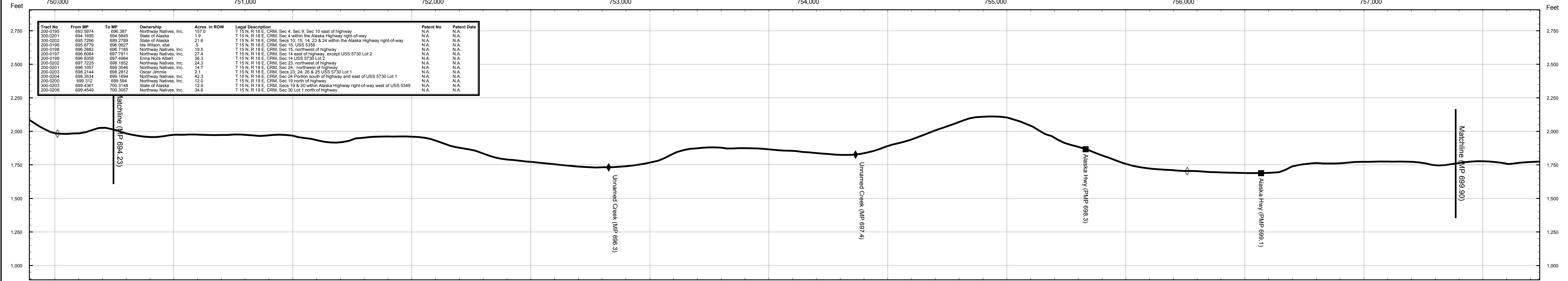
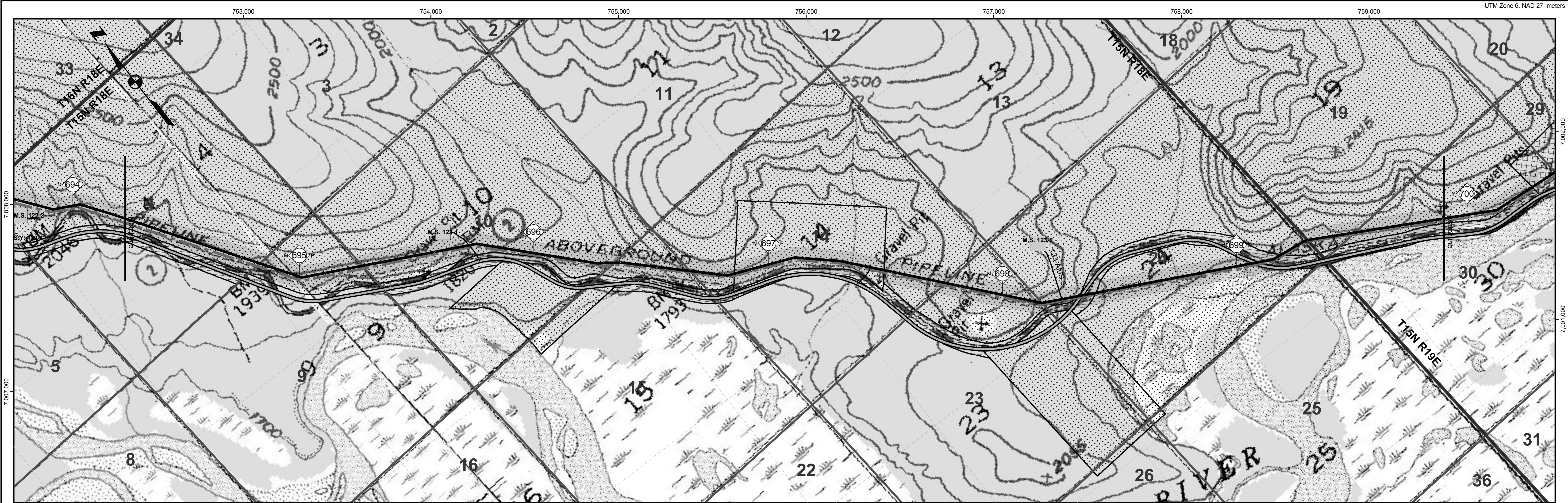
**ALASKA SEGMENT OF THE  
ALASKA NATURAL GAS TRANSPORTATION SYSTEM**

0 500 1,000 2,000 3,000 4,000 Feet

DRAWING NO.:  
**4680-16-00-B-O-122**

REV.:  
**4**





Tract No.	From MP	To MP	Ownership	Acres	In ROW	Legal Description	Patent No.	Patent Date
200-0195	694.5974	694.5974	Northway Natives, Inc.	157.0		T 15 N, R 18 E, CRM, Sec 4, Sec 9, Sec 10 east of highway	N.A.	N.A.
200-0201	694.1695	694.5945	State of Alaska	1.9		T 15 N, R 18 E, CRM, Sec 4 within the Alaska Highway right-of-way	N.A.	N.A.
200-0202	695.7295	699.2789	State of Alaska	21.6		T 15 N, R 18 E, CRM, Secs 10, 15, 14, 23 & 24 within the Alaska Highway right-of-way	N.A.	N.A.
200-0196	695.8779	696.0227	Ida Wilson, et al	5		T 15 N, R 18 E, CRM, Sec 15, USS 5355	N.A.	N.A.
200-0198	696.2862	696.7185	Northway Natives, Inc.	19.5		T 15 N, R 18 E, CRM, Sec 15, northwest of highway	N.A.	N.A.
200-0197	696.6384	697.7311	Northway Natives, Inc.	27.4		T 15 N, R 18 E, CRM, Sec 14 east of highway, except USS 5730 Lot 2	N.A.	N.A.
200-0199	696.6355	697.4894	Enna Nora Albert	36.3		T 15 N, R 18 E, CRM, Sec 14 USS 5730 Lot 2	N.A.	N.A.
200-0202	697.7225	698.1852	Northway Natives, Inc.	24.3		T 15 N, R 18 E, CRM, Sec 23, northwest of highway	N.A.	N.A.
200-0201	696.1057	699.5545	Northway Natives, Inc.	14.7		T 15 N, R 18 E, CRM, Sec 24, northwest of highway	N.A.	N.A.
200-0203	698.2144	698.2812	Oscar Jimmie	2.1		T 15 N, R 18 E, CRM, Secs 23, 24, 26 & 25 USS 5730 Lot 1	N.A.	N.A.
200-0204	699.3534	699.1694	Northway Natives, Inc.	42.3		T 15 N, R 18 E, CRM, Sec 24 Portion south of highway and east of USS 5730 Lot 1	N.A.	N.A.
200-0200	699.312	699.594	Northway Natives, Inc.	12.0		T 15 N, R 19 E, CRM, Sec 19 north of highway	N.A.	N.A.
200-0203	699.4361	700.3145	State of Alaska	12.9		T 15 N, R 19 E, CRM, Secs 19 & 30 within Alaska Highway right-of-way west of USS 5349	N.A.	N.A.
200-0205	699.4549	700.3257	Northway Natives, Inc.	24.6		T 15 N, R 19 E, CRM, Sec 30 Lot 1 north of highway	N.A.	N.A.

**Land Ownership**

4B	5/21/04	Compressor station sites for initial annual average capacity of 4,500 MMSCFD added; MP 0.0 to MP 1.0 realigned for Point of Origin relocation.	EG	PAC	KM	
4A	5/13/02	Compiled and recreated in digital form based on rev. 3 Ownership sheets, rev. 3 Civil sheets, and rev. 4 Pipeline sheets. Land ownership updated. Background map changed to USGS quads.	IWM	MTA	MRF	
REV	DATE	REVISIONS	BY	CHECKED BY	PROJ. MANAGER	CUST. APPROVAL

**ALASKAN NORTHWEST**  
**NATURAL GAS TRANSPORTATION CO.**

**Baker**  
Michael Baker Jr., Inc.  
A Unit of Michael Baker Corporation  
4601 Business Park Blvd., Suite 42  
Anchorage, Alaska 99503  
Phone: (907) 273-1600  
Fax: (907) 273-1699

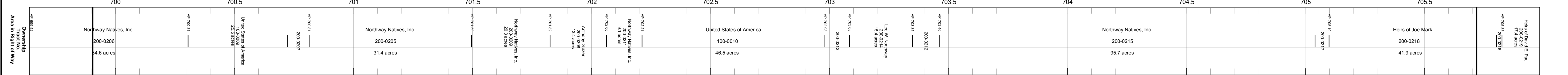
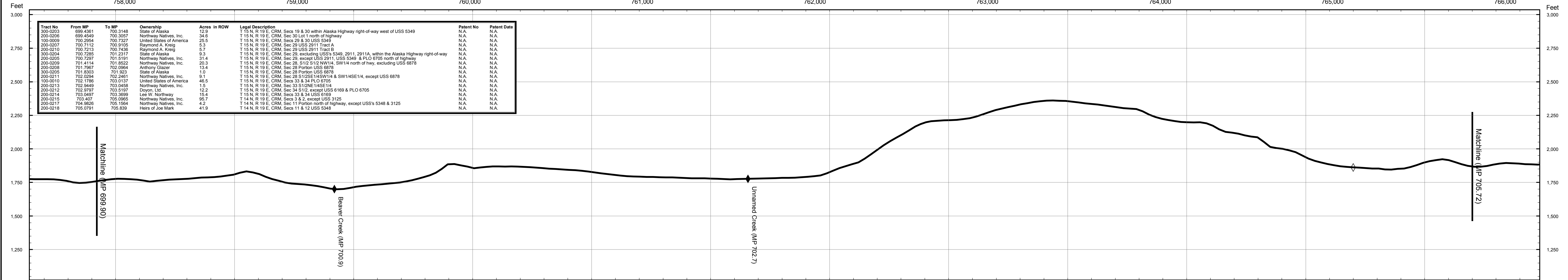
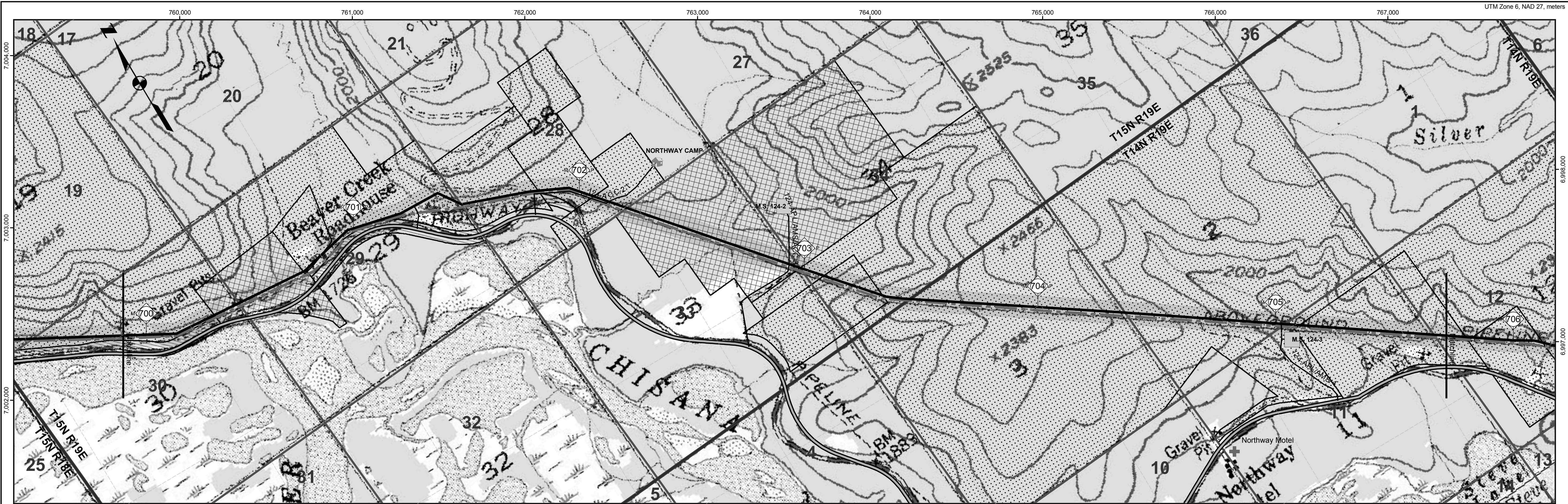
This document is the property of the Alaskan Northwest Natural Gas Transportation Company (ANNATC), a partnership, or one or more of its associated companies. It contains proprietary and confidential information. The unauthorized use, reproduction, and/or disclosure of this information is prohibited pursuant to AS 40.25.120(a)(4) and by applicable State and Federal laws including, but not limited to: the Alaska Land Act, AS 38.05.035(a)(9); Article I, Section 22 of the Alaska Constitution; the Federal Trade Secrets Act, 18 USC § 1905; and the Federal Freedom of Information Act, Exemption 4, 5 USC 552(b)(4). Public access to this document also may be limited by the Federal Energy Regulatory Commission Statement of Policy on Treatment of Previously Public Documents, 37 FR 61.030 (2001). In addition, this document is protected as an unpublished work under the United States Copyright Law, 17 USC § 101 et seq. All rights are reserved; unauthorized reproduction is prohibited. ANNATC should be provided with written notice of any request for this document (other than a request from a State agency or official), as well as a reasonable opportunity to object to any proposed release of this document.

**NATURAL GAS PIPELINE**  
**LAND USE AND OWNERSHIP**  
M.P. 694.23 to M.P. 699.90  
**ALASKA SEGMENT OF THE**  
**ALASKA NATURAL GAS TRANSPORTATION SYSTEM**

DRAWING NO.:  
**4680-16-00-B-O-123**

REV.:  
**4**





Proposed Centreline

Storage Yards

Compressor Stations

Material Sites

River Staging Areas

Access Roads

TAPS Oil Pipeline

Other Pipelines

Powerlines

State Highways

Airports

Camps

Landmarks

Selected Wetlands

Federal (100)

Federal: COE (1CE)

Private (200)

State (300)

State: MHT (3MH)

State: UA (3UA)

Borough (400)

REV	DATE	REVISIONS	BY	CHECKED BY	PROJ. MANAGER	CUST. APPROVAL
4B	5/21/04	Compressor station sites for initial annual average capacity of 4,500 MMSCFD added; MP 0.0 to MP 1.0 realigned for Point of Origin relocation.	EG	PAC	KM	
4A	5/13/02	Compiled and recreated in digital form based on rev. 3 Ownership sheets, rev. 3 Civil sheets, and rev. 4 Pipeline sheets. Land ownership updated. Background map changed to USGS quads.	IWM	MTA	MRF	

**ALASKAN NORTHWEST**  
**NATURAL GAS TRANSPORTATION CO.**

**Baker**  
Michael Baker Jr., Inc.  
A Unit of Michael Baker Corporation  
4601 Business Park Blvd., Suite 42  
Anchorage, Alaska 99503  
Phone: (907) 273-1600  
Fax: (907) 273-1699

This document is the property of the Alaskan Northwest Natural Gas Transportation Company (ANNATC), a partnership, or one or more of its associated companies. It contains proprietary and confidential information. The unauthorized use, reproduction, and/or disclosure of this information is prohibited pursuant to AS 40.25.120(a)(4) and by applicable State and Federal laws including, but not limited to: the Alaska Land Act, AS 38.05.035(a)(9); Article I, Section 22 of the Alaska Constitution; the Federal Trade Secrets Act, 18 USC § 1905; and the Federal Freedom of Information Act, Exemption 4, 5 USC 552(b)(4). Public access to this document also may be limited by the Federal Energy Regulatory Commission Statement of Policy on Treatment of Previously Public Documents, 37 FR 61 030 (2001). In addition, this document is protected as an unpublished work under the United States Copyright Law, 17 USC § 101 et seq. All rights are reserved; unauthorized reproduction is prohibited. ANNATC should be provided with written notice of any request for this document (other than a request from a State agency or official), as well as a reasonable opportunity to object to any proposed release of this document.

**NATURAL GAS PIPELINE**

**LAND USE AND OWNERSHIP**

M.P. 699.90 to M.P. 705.72

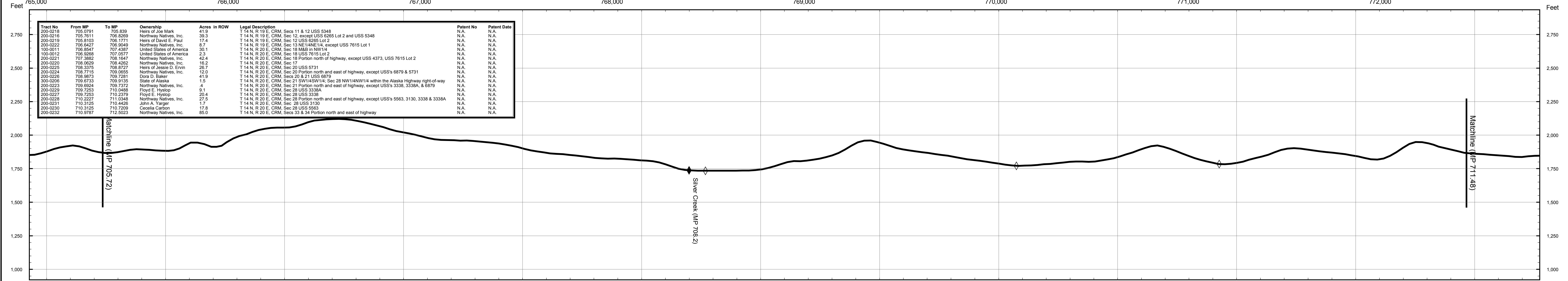
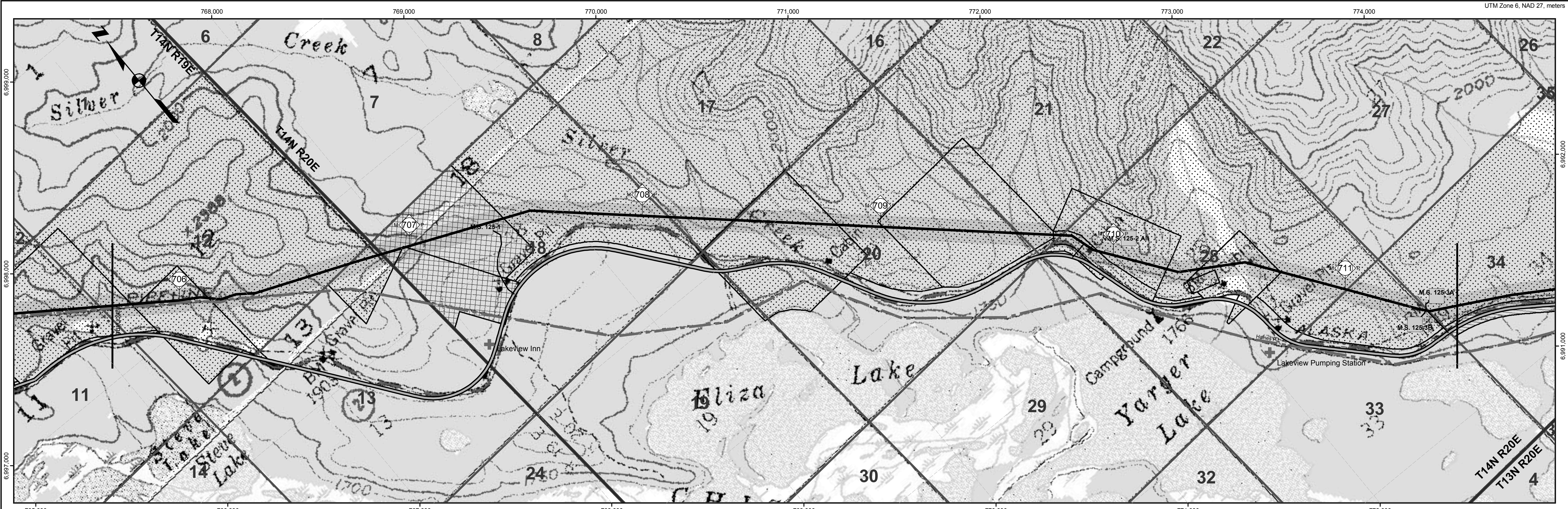
**ALASKA SEGMENT OF THE**  
**ALASKA NATURAL GAS TRANSPORTATION SYSTEM**

0 500 1,000 2,000 3,000 4,000 Feet

DRAWING NO.: 4680-16-00-B-O-124

REV.: 4





Tract No.	From MP	To MP	Ownership	Acres in ROW	Legal Description	Patent No.	Patent Date
200-0218	705.0791	705.839	Heirs of Joe Mark	41.9	T 14 N, R 19 E, CRM, Secs 11 & 12 USS 5348	N.A.	N.A.
200-0216	705.7611	706.8299	Northway Natives, Inc.	39.3	T 14 N, R 19 E, CRM, Sec 12, except USS 6265 Lot 2 and USS 5348	N.A.	N.A.
200-0219	705.8103	706.1771	Heirs of David E. Paul	17.4	T 14 N, R 19 E, CRM, Sec 12 USS 6265 Lot 2	N.A.	N.A.
200-0222	706.6427	706.9049	Northway Natives, Inc.	8.7	T 14 N, R 19 E, CRM, Sec 13 NE 1/4NE 1/4, except USS 7615 Lot 1	N.A.	N.A.
100-0011	706.6427	707.4387	United States of America	39.1	T 14 N, R 20 E, CRM, Sec 18 M&B in NW 1/4	N.A.	N.A.
100-0012	706.9268	707.0577	United States of America	2.3	T 14 N, R 20 E, CRM, Sec 18 USS 7615 Lot 2	N.A.	N.A.
200-0221	707.3882	708.1647	Northway Natives, Inc.	42.4	T 14 N, R 20 E, CRM, Sec 18 Portion north of highway, except USS 4373, USS 7615 Lot 2	N.A.	N.A.
200-0220	708.0629	708.4262	Northway Natives, Inc.	16.2	T 14 N, R 20 E, CRM, Sec 17	N.A.	N.A.
200-0225	708.5375	708.9727	Heirs of Jessie D. Ervin	26.7	T 14 N, R 20 E, CRM, Sec 20 USS 9731	N.A.	N.A.
200-0224	708.7715	709.9555	Northway Natives, Inc.	12.0	T 14 N, R 20 E, CRM, Sec 20 Portion north and east of highway, except USS's 6879 & 5731	N.A.	N.A.
200-0226	708.9873	709.7261	Dora D. Baker	41.9	T 14 N, R 20 E, CRM, Secs 20 & 21 USS 6879	N.A.	N.A.
300-0206	709.6733	709.8135	State of Alaska	1.5	T 14 N, R 20 E, CRM, Sec 21 SW 1/4SW 1/4, Sec 28 NW 1/4NW 1/4 within the Alaska Highway right-of-way	N.A.	N.A.
200-0223	709.6924	709.7372	Northway Natives, Inc.	4	T 14 N, R 20 E, CRM, Sec 21 Portion north and east of highway, except USS's 3338, 3338A, & 6879	N.A.	N.A.
200-0229	709.7253	710.5489	Floyd E. Hyslop	9.1	T 14 N, R 20 E, CRM, Sec 28 USS 3338A	N.A.	N.A.
200-0227	709.7253	710.2379	Floyd E. Hyslop	20.4	T 14 N, R 20 E, CRM, Sec 28 USS 3338	N.A.	N.A.
200-0228	710.2227	711.0345	Northway Natives, Inc.	27.5	T 14 N, R 20 E, CRM, Sec 28 Portion north and east of highway, except USS's 5563, 3130, 3338 & 3338A	N.A.	N.A.
200-0231	710.3126	710.4426	John A. Yarger	1.7	T 14 N, R 20 E, CRM, Sec 28 USS 3130	N.A.	N.A.
200-0230	710.3126	710.7209	Cecelia Carlson	17.8	T 14 N, R 20 E, CRM, Sec 28 USS 5563	N.A.	N.A.
200-0232	710.9787	712.5023	Northway Natives, Inc.	85.0	T 14 N, R 20 E, CRM, Secs 33 & 34 Portion north and east of highway	N.A.	N.A.

Milepost: 705.5

**Proposed Centreline**

**Storage Yards**

**Compressor Stations**

**Material Sites**

**River Staging Areas**

**Access Roads**

**TAPS Oil Pipeline**

**Other Pipelines**

**Powerlines**

**State Highways**

**Airports**

**Camps**

**Landmarks**

**Selected Wetlands**

**Land Ownership**

**Federal (100)**

**Federal: COE (1CE)**

**Private (200)**

**State (300)**

**State: MHT (3MH)**

**State: UA (3UA)**

**Borough (400)**

4B	5/21/04	Compressor station sites for initial annual average capacity of 4,500 MMSCFD added; MP 0.0 to MP 1.0 realigned for Point of Origin relocation.	EG	PAC	KM	
4A	5/13/02	Compiled and recreated in digital form based on rev. 3 Ownership sheets, rev. 3 Civil sheets, and rev. 4 Pipeline sheets. Land ownership updated. Background map changed to USGS quads.	IWM	MTA	MRF	
REV	DATE	REVISIONS	BY	CHECKED BY	PROJ. MANAGER	CUST. APPROVAL

**ALASKAN NORTHWEST**

**NATURAL GAS TRANSPORTATION CO.**

**Baker**

Michael Baker Jr., Inc.  
A Unit of Michael Baker Corporation  
4601 Business Park Blvd., Suite 42  
Anchorage, Alaska 99503  
Phone: (907) 273-1600  
Fax: (907) 273-1699

This document is the property of the Alaskan Northwest Natural Gas Transportation Company (ANNATC), a partnership, or one or more of its associated companies. It contains proprietary and confidential information. The unauthorized use, reproduction, and/or disclosure of this information is prohibited pursuant to AS 40.25.120(a)(4) and by applicable State and Federal laws including, but not limited to: the Alaska Land Act, AS 38.05.035(a)(9); Article I, Section 22 of the Alaska Constitution; the Federal Trade Secrets Act, 18 USC § 1905; and the Federal Freedom of Information Act, Exemption 4, 5 USC 552(b)(4). Public access to this document also may be limited by the Federal Energy Regulatory Commission Statement of Policy on Treatment of Previously Public Documents, 37 FR 61,030 (2001). In addition, this document is protected as an unpublished work under the United States Copyright Law, 17 USC § 101 et seq. All rights are reserved; unauthorized reproduction is prohibited. ANNATC should be provided with written notice of any request for this document (other than a request from a State agency or official), as well as a reasonable opportunity to object to any proposed release of this document.

**NATURAL GAS PIPELINE**

**LAND USE AND OWNERSHIP**

M.P. 705.72 to M.P. 711.48

**ALASKA SEGMENT OF THE**

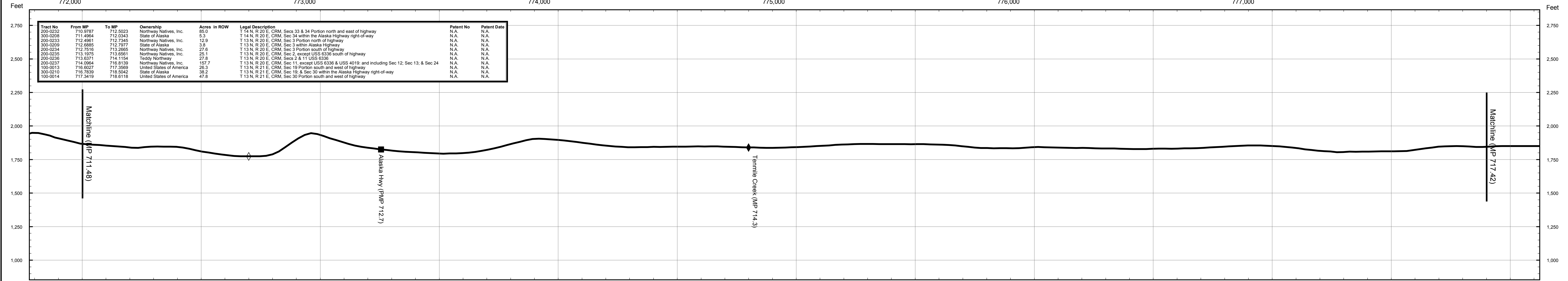
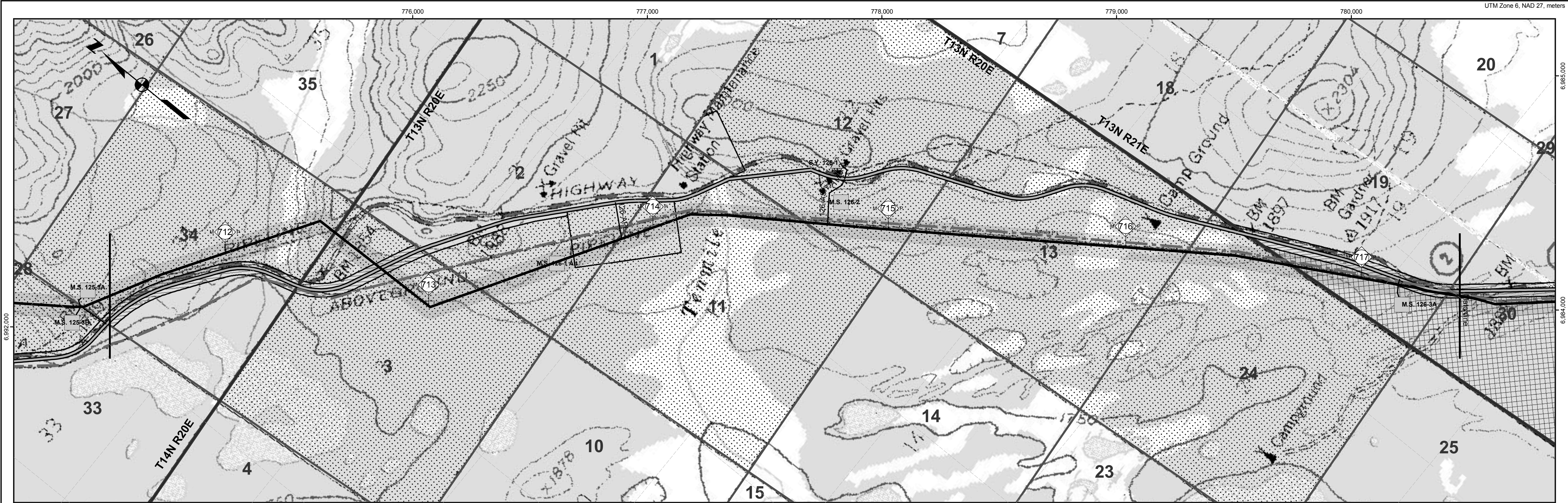
**ALASKA NATURAL GAS TRANSPORTATION SYSTEM**

0 500 1,000 2,000 3,000 4,000 Feet

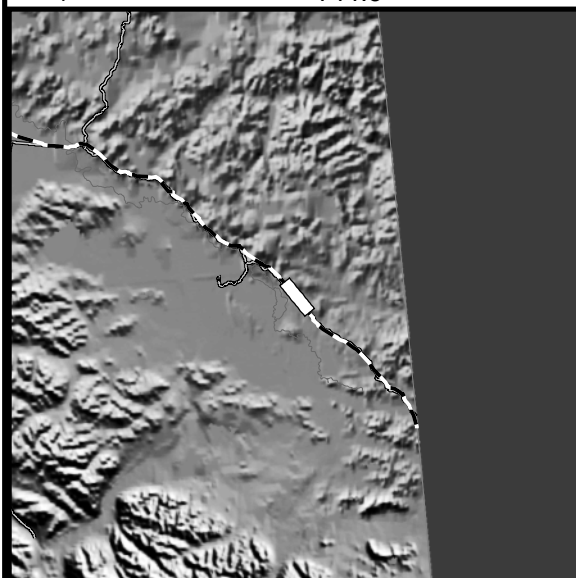
DRAWING NO.: 4680-16-00-B-O-125

REV.: 4





Tract No.	From MP	To MP	Ownership	Acres in ROW	Legal Description	Patent No.	Patent Date
200-0222	710.9787	712.5023	Northway Natives, Inc.	85.0	T 14 N, R 20 E, CRM, Secs 33 & 34 Portion north and east of highway	N.A.	N.A.
300-0208	711.4964	712.0343	State of Alaska	5.3	T 14 N, R 20 E, CRM, Sec 34 within the Alaska Highway right-of-way	N.A.	N.A.
200-0223	712.4961	712.7345	Northway Natives, Inc.	12.9	T 13 N, R 20 E, CRM, Sec 3 Portion north of highway	N.A.	N.A.
300-0209	712.6886	712.7977	State of Alaska	3.6	T 13 N, R 20 E, CRM, Sec 3 within Alaska Highway	N.A.	N.A.
200-0234	712.7516	713.2865	Northway Natives, Inc.	27.6	T 13 N, R 20 E, CRM, Sec 3 Portion south of highway	N.A.	N.A.
200-0235	713.1975	713.6951	Northway Natives, Inc.	25.1	T 13 N, R 20 E, CRM, Sec 2, except USS 6336 south of highway	N.A.	N.A.
200-0236	713.6371	714.1154	Teddy Northway	27.8	T 13 N, R 20 E, CRM, Sec 2 & 11 USS 6336	N.A.	N.A.
200-0237	714.0954	716.8139	Northway Natives, Inc.	157.7	T 13 N, R 20 E, CRM, Sec 11, except USS 6336 & USS 4019, and including Sec 12, Sec 13, & Sec 24	N.A.	N.A.
100-0013	716.8027	717.3669	United States of America	26.3	T 13 N, R 21 E, CRM, Sec 19 Portion south and west of highway	N.A.	N.A.
300-0210	716.7839	716.5042	State of Alaska	38.2	T 13 N, R 21 E, CRM, Sec 19, & Sec 30 within the Alaska Highway right-of-way	N.A.	N.A.
100-0014	717.3419	718.6116	United States of America	47.8	T 13 N, R 21 E, CRM, Sec 30 Portion south and west of highway	N.A.	N.A.



- Proposed Centreline**

  - Storage Yards
  - Compressor Stations
  - Material Sites
  - River Staging Areas
  - Access Roads
- TAPS Oil Pipeline**

  - Other Pipelines
  - Powerlines
  - State Highways
  - Airports
  - Camps
  - Landmarks
  - Selected Wetlands
- Land Ownership**

  - Federal (100)
  - Federal: COE (1CE)
  - Private (200)
  - State (300)
  - State: MHT (3MH)
  - State: UA (3UA)
  - Borough (400)

REV	DATE	REVISIONS	BY	CHECKED BY	PROJ. MANAGER	CUST. APPROVAL
4B	5/21/04	Compressor station sites for initial annual average capacity of 4,500 MMSCFD added; MP 0.0 to MP 1.0 realigned for Point of Origin relocation.	EG	PAC	KM	
4A	5/13/02	Compiled and recreated in digital form based on rev. 3 Ownership sheets, rev. 3 Civil sheets, and rev. 4 Pipeline sheets. Land ownership updated. Background map changed to USGS quads.	IWM	MTA	MRF	

**ALASKAN NORTHWEST**  
**NATURAL GAS TRANSPORTATION CO.**

**Baker**  
Michael Baker Jr., Inc.  
A Unit of Michael Baker Corporation  
4601 Business Park Blvd., Suite 42  
Anchorage, Alaska 99503  
Phone: (907) 273-1600  
Fax: (907) 273-1699

This document is the property of the Alaskan Northwest Natural Gas Transportation Company (ANNNGTC), a partnership, or one or more of its associated companies. It contains proprietary and confidential information. The unauthorized use, reproduction, and/or disclosure of this information is prohibited pursuant to AS 40.25.120(a)(4) and by applicable State and Federal laws including, but not limited to: the Alaska Land Act, AS 38.05.035(a)(9); Article I, Section 22 of the Alaska Constitution; the Federal Trade Secrets Act, 18 USC § 1905; and the Federal Freedom of Information Act, Exemption 4, 5 USC 552(b)(4). Public access to this document also may be limited by the Federal Energy Regulatory Commission Statement of Policy on Treatment of Previously Public Documents, 37 FR 61.030 (2001). In addition, this document is protected as an unpublished work under the United States Copyright Law, 17 USC § 101 et seq. All rights are reserved; unauthorized reproduction is prohibited. ANNNGTC should be provided with written notice of any request for this document (other than a request from a State agency or official), as well as a reasonable opportunity to object to any proposed release of this document.

**NATURAL GAS PIPELINE**

**LAND USE AND OWNERSHIP**

M.P. 711.48 to M.P. 717.42

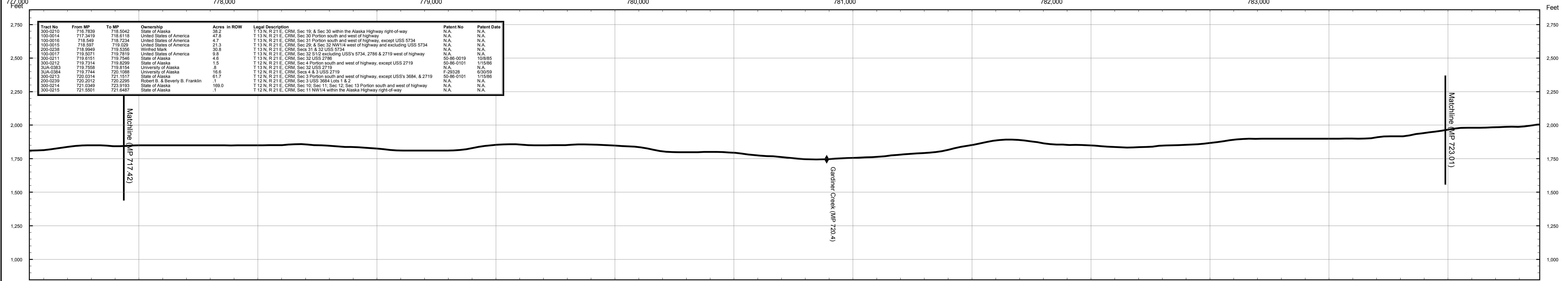
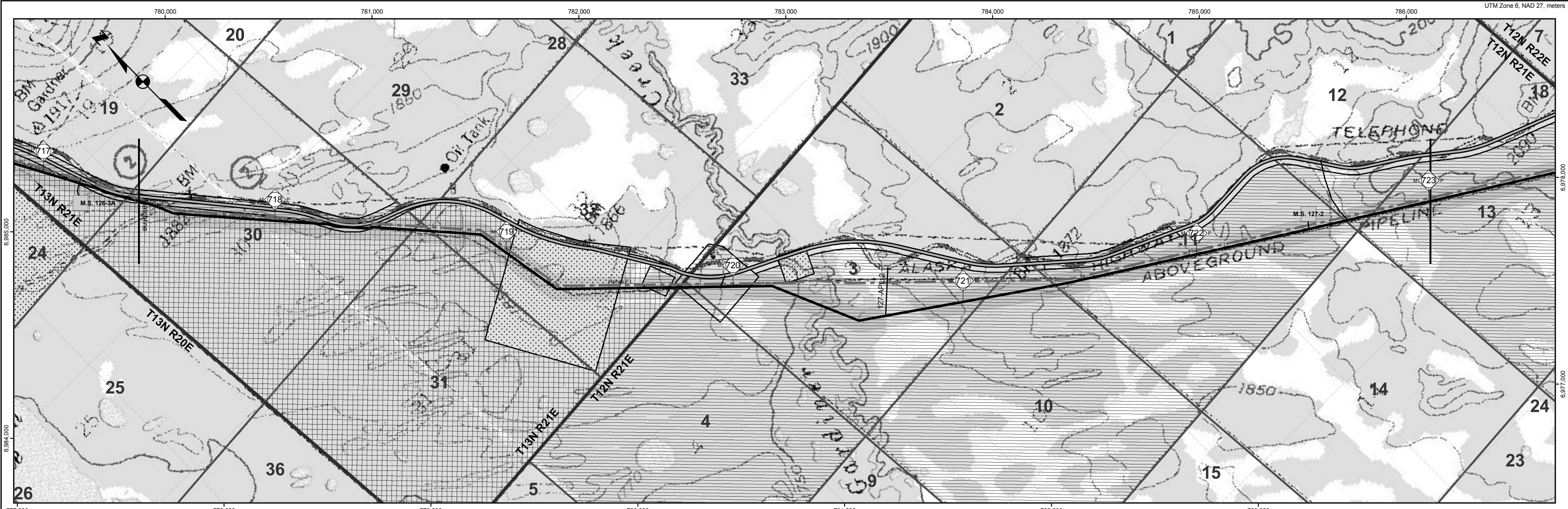
**ALASKA SEGMENT OF THE**  
**ALASKA NATURAL GAS TRANSPORTATION SYSTEM**

0 500 1,000 2,000 3,000 4,000 Feet

DRAWING NO.: 4680-16-00-B-O-126

REV.: 4





Tract No.	From MP	To MP	Ownership	Acres in ROW	Legal Description	Patent No.	Patent Date
300-0210	715.7839	715.5042	State of Alaska	38.2	T13 N, R 21 E, CRM, Sec 19, & Sec 30 within the Alaska Highway right-of-way	N/A	N/A
100-0014	717.3419	718.6118	United States of America	47.8	T13 N, R 21 E, CRM, Sec 30 Portion south and west of highway	N/A	N/A
100-0016	718.549	718.2234	United States of America	4.7	T13 N, R 21 E, CRM, Sec 31 Portion south and west of highway, except USS 5734	N/A	N/A
100-0015	718.597	719.029	United States of America	21.3	T13 N, R 21 E, CRM, Sec 28 & Sec 32 NW1/4 west of highway and excluding USS 5734	N/A	N/A
200-0238	718.9849	719.5356	Winfred Mark	30.8	T13 N, R 21 E, CRM, Sec 31 & 32 USS 5734	N/A	N/A
100-0017	719.5071	719.7519	United States of America	9.8	T13 N, R 21 E, CRM, Sec 32 S1/2 excluding USS's 5734, 2786 & 2719 west of highway	N/A	N/A
300-0211	719.6151	719.7546	State of Alaska	4.8	T13 N, R 21 E, CRM, Sec 32 USS 5734	50-86-0019	10/8/85
300-0212	719.7314	719.8259	State of Alaska	1.5	T12 N, R 21 E, CRM, Sec 4 Portion south and west of highway, except USS 2719	50-86-0101	11/5/86
3UA-0383	719.7556	719.8154	University of Alaska	9	T13 N, R 21 E, CRM, Sec 32 USS 2719	N/A	11/5/86
3UA-0384	719.7744	720.1088	University of Alaska	16.5	T12 N, R 21 E, CRM, Secs 4 & 3 USS 2719	F-29328	6/30/59
300-0213	720.0314	721.1517	State of Alaska	61.7	T12 N, R 21 E, CRM, Sec 3 Portion south and west of highway, except USS's 3684, & 2719	50-86-0101	11/5/86
200-0239	720.2012	720.2295	Robert B. & Beverly B. Franklin	1	T12 N, R 21 E, CRM, Sec 3 USS 3684 Lots 1 & 2	N/A	N/A
300-0214	721.0349	723.8193	State of Alaska	169.0	T12 N, R 21 E, CRM, Sec 10, Sec 11, Sec 12, Sec 13 Portion south and west of highway	N/A	N/A
300-0215	721.5501	721.6487	State of Alaska	1	T12 N, R 21 E, CRM, Sec 11 NW1/4 within the Alaska Highway right-of-way	N/A	N/A

**Proposed Centreline**

- Storage Yards
- Compressor Stations
- Material Sites
- River Staging Areas
- Access Roads

**TAPS Oil Pipeline**

- Other Pipelines
- Powerlines
- State Highways
- Airports
- Camps
- Landmarks
- Selected Wetlands

**Land Ownership**

- Federal (100)
- Federal: COE (1CE)
- Private (200)
- State (300)
- State: MHT (3MH)
- State: UA (3UA)
- Borough (400)

4B	5/21/04	Compressor station sites for initial annual average capacity of 4,500 MMSCFD added; MP 0.0 to MP 1.0 realigned for Point of Origin relocation.	EG	PAC	KM	
4A	5/13/02	Compiled and recreated in digital form based on rev. 3 Ownership sheets, rev. 3 Civil sheets, and rev. 4 Pipeline sheets. Land ownership updated. Background map changed to USGS quads.	IWM	MTA	MRF	
REV	DATE	REVISIONS	BY	CHECKED BY	PROJ. MANAGER	CUST. APPROVAL

**ALASKAN NORTHWEST NATURAL GAS TRANSPORTATION CO.**

**Baker**

Michael Baker Jr., Inc.  
A Unit of Michael Baker Corporation  
4601 Business Park Blvd., Suite 42  
Anchorage, Alaska 99503  
Phone: (907) 273-1600  
Fax: (907) 273-1699

This document is the property of the Alaskan Northwest Natural Gas Transportation Company (ANNATC), a partnership, or one or more of its associated companies. It contains proprietary and confidential information. The unauthorized use, reproduction, and/or disclosure of this information is prohibited pursuant to AS 40.25.120(a)(4) and by applicable State and Federal laws including, but not limited to: the Alaska Land Act, AS 38.05.035(a)(9); Article I, Section 22 of the Alaska Constitution; the Federal Trade Secrets Act, 18 USC § 1905; and the Federal Freedom of Information Act, Exemption 4, 5 USC 552(b)(4). Public access to this document also may be limited by the Federal Energy Regulatory Commission Statement of Policy on Treatment of Previously Public Documents, 37 FR 61,030 (2001). In addition, this document is protected as an unpublished work under the United States Copyright Law, 17 USC § 101 et seq. All rights are reserved; unauthorized reproduction is prohibited. ANNATC should be provided with written notice of any request for this document (other than a request from a State agency or official), as well as a reasonable opportunity to object to any proposed release of this document.

**NATURAL GAS PIPELINE**

**LAND USE AND OWNERSHIP**

M.P. 717.42 to M.P. 723.01

**ALASKA SEGMENT OF THE ALASKA NATURAL GAS TRANSPORTATION SYSTEM**

0 500 1,000 2,000 3,000 4,000 Feet

DRAWING NO.: 4680-16-00-B-O-127

REV.: 4



