

Source Water Assessment

A Hydrogeologic Susceptibility and
Vulnerability Assessment for
Nikiski High School Drinking Water
System,
Nikiski area, Alaska
PWSID 244484.001

December 2003

DRINKING WATER PROTECTION PROGRAM REPORT Report 1279
Alaska Department of Environmental Conservation

Source Water Assessment for Nikiski High School Drinking Water System Nikiski area, Alaska PWSID 244484.001

December 2003

DRINKING WATER PROTECTION PROGRAM REPORT Report 1279

The Drinking Water Protection Program (DWPP) is producing Source Water Assessments in compliance with the Safe Drinking Water Act Amendments of 1996. Each assessment includes a delineation of the source water area, an inventory of potential and existing contaminant sources that may impact the water, a risk ranking for each of these contaminants, and an evaluation of the potential vulnerability of these drinking water sources.

These assessments are intended to provide public water systems owners/operators, communities, and local governments with the best available information that may be used to protect the quality of their drinking water. The assessments combine information obtained from various sources, including the U.S. Environmental Protection Agency, Alaska Department of Environmental Conservation (ADEC), public water system owners/operators, and other public information sources. The results of this assessment are subject to change if additional data becomes available. It is anticipated this assessment will be updated every five years to reflect any changes in the vulnerability and/or susceptibility of public drinking water source. If you have any additional information that may affect the results of this assessment, please contact the Program Coordinator of DWPP, (907) 269-7521.

CONTENTS

| | Page | | Page |
|------------------------------|------|---|------|
| Executive Summary | 1 | Inventory of Potential and Existing Contaminant Sources | 2 |
| Nikiski High School | | Ranking of Contaminant Risks | 2 |
| Public Drinking Water System | 1 | Vulnerability of Nikiski High School | |
| Nikiski High School | | Drinking Water System | 3 |
| Protection Area | 1 | References | 7 |

TABLES

| | | |
|-------|--------------------------|---|
| TABLE | 1. Definition of Zones | 2 |
| | 2. Susceptibility | 3 |
| | 3. Contaminant Risks | 4 |
| | 3. Overall Vulnerability | 4 |

APPENDICES

| | |
|----------|---|
| APPENDIX | A. Nikiski High School Drinking Water Protection Area (Map 1) |
| | B. Contaminant Source Inventory for Nikiski High School (Table 1) |
| | Contaminant Source Inventory and Risk Ranking for Nikiski High School – Bacteria and Viruses (Table 2) |
| | Contaminant Source Inventory and Risk Ranking for Nikiski High School – Nitrates/Nitrites (Table 3) |
| | Contaminant Source Inventory and Risk Ranking for Nikiski High School – Volatile Organic Chemicals (Table 4) |
| | Contaminant Source Inventory and Risk Ranking for Nikiski High School – Heavy Metals, Cyanide, and Other Inorganic Chemicals (Table 5) |
| | Contaminant Source Inventory and Risk Ranking for Nikiski High School – Synthetic Organic Chemicals (Table 6) |
| | Contaminant Source Inventory and Risk Ranking for Nikiski High School – Other Organic Chemicals (Table 7) |
| | C. Nikiski High School Drinking Water Protection Area and Potential and Existing Contaminant Sources (Map 2) |
| | D. Vulnerability Analysis for Contaminant Source Inventory and Risk Ranking for Nikiski High School Public Drinking Water Source (Charts 1 – 14) |

Source Water Assessment for Nikiski High School Source of Public Drinking Water, Nikiski area, Alaska

Drinking Water Protection Program Alaska Department of Environmental Conservation

EXECUTIVE SUMMARY

The public water system for Nikiski High School is a Class A (community) water system consisting of one well. Nikiski High School is located on Education Drive. (S8N12W Section 36 SESW). The wellhead received a susceptibility rating of **Low** and the aquifer received a susceptibility rating of **Very High**. Combining these two ratings produces a **Medium** rating for the natural susceptibility of the well. Identified potential and current sources of contaminants for the Nikiski High School public drinking water source include: motor vehicle waste disposal wells, residential septic systems, residential areas, swimming pools, vehicle storage and roads. These identified potential and existing sources of contamination are considered as sources of bacteria and viruses, nitrates and/or nitrites, and volatile organic chemicals, inorganic chemicals, synthetic organic chemicals and other organic chemicals. Overall, the public water source for the Nikiski High School received a vulnerability rating of **Very High** for volatile organic chemicals **High** for inorganic chemicals, other organic chemicals, **Medium** for bacteria and viruses, nitrates and nitrites and **Low** for synthetic organic chemicals.

NIKISKI HIGH SCHOOL PUBLIC DRINKING WATER SYSTEM

The Nikiski High School public water system (PWS) is a Class A (community) water system. The system consists of one well located off of the Kenai Spur Highway on Boston Street. (See Map 1 of Appendix A). Nikiski is part of the Kenai Peninsula Borough, which is located directly south of the city of Anchorage (Please see the inset of Map 1 in Appendix A for location). The borough encompasses 25,600 square miles, of which only 15,700 square miles is land.

The Kenai Peninsula is broken into two distinct geographic areas; the Kenai Mountains and the Kenai Lowlands. Nikiski and its surrounding communities are located in the Kenai Lowlands. Communities located within the Kenai Lowlands include Sterling, Soldotna, Kenai, Nikiski, Clam Gulch, Ninilchik, and Homer.

The Kenai Peninsula area topography varies from about 3,000 feet to 5,000 feet above sea level in the Kenai Mountains, the highest point being about 6,400 feet

above sea level. The Kenai Peninsula is dotted with many lakes and small streams, including three large lakes (Kenai Lake, Skilak Lake, and Tustumena Lake) and two substantial rivers (Kenai River, and Kasilof River) (USGS 1915).

The Nikiski High School water system is located within the Kenai Lowlands, which is a sub-province of the Cook Inlet-Susitna Lowland physiographic region. The Kenai Lowland is a glaciated coastal shelf situated west of the northeast-trending Kenai Mountains. Approximately 100 miles long, the coastal shelf is bordered on the west by Cook Inlet, on the east by Kenai Mountains, on the north by Turnagain Arm, and on the south by the Caribou Hills and Kachemak Bay. The following summary of regional geology and hydrogeology is based on studies by Bailey and Hogan (1995); Freethy and Scully (1980); Glass (1996); Hartman, et al. (1972); and Karlstrom (1964).

The Kenai Lowland is underlain by bedrock. Tertiary sedimentary bedrock is more than 500 feet below the city of Kenai airport, but is exposed along beach cliffs and road cuts near the southwest end of the lowland. Unconsolidated surficial deposits of Quaternary age include coastal deposits, glaciolacustrine deposits, glaciofluvial deposits, glacial moraine deposits, and periglacial wind deposits. Unconsolidated Quaternary cover on the lowlands generally thickens from south to North being thin or absent in the Homer area, and over 750 feet thick near Nikiski.

The most significant groundwater resources of the Kenai Lowlands are contained in Quaternary coarse-grained sands and gravels. Flood plain, river terrace and other alluvial deposits are common aquifer materials in the area, and are characterized by high rates of recharge, and large saturated thicknesses. Other favorable materials include proglacial lake and associated river deposits and glacial outwash deposits consisting of meltwater sorted sand and gravel material. Unsorted glacial moraine and drift deposits generally have poor groundwater yields, as do discontinuous layers of confining clays and silt that are common throughout the unconsolidated materials. The relatively thicker sequence of unconsolidated sediments in the northern portions of the Kenai Lowlands locally hosts thicker, more extensive clay aquitards and multiple aquifers.

The Kenai Peninsula area has a central water system, however, many homes and businesses in the area rely on individual wells for their water supply. Most of these wells are deep with depths between 50 and 200 feet. Static water levels in many of these wells are between 10 and 30 feet below the surface. Although groundwater quality can vary significantly in short distance, groundwater supplies are abundant in the area.

According to the most recent sanitary survey (1/3/2002) the depth of the well is 169 feet below ground surface (bgs). The well log indicates a confining layer exists from 63 ft to 84 ft. The well is screened from 144-169 feet.

The Sanitary Survey indicates that the well is properly sealed. A properly installed sanitary seal may provide protection against contaminant from entering the source waters at the casing.

The well is not located in a floodplain and the land is sloped away from the well providing adequate surface water drainage.

It is not known whether the well is grouted. Since the well was drilled prior to grouting regulations, this assessment assumes that the casing is not grouted. Proper grouting provides added protection against contaminants traveling along the well casing and into source waters.

This system operates year round and serves up to 550 residents through 1 service connection.

NIKISKI HIGH SCHOOL DRINKING WATER PROTECTION AREA

In order to evaluate whether a drinking water source is at risk, we must first evaluate what are the most likely pathways for surface contamination to reach the groundwater. These areas are determined by looking at the characteristics of the soil, groundwater, aquifer, and well.

The most probable area for contamination to reach the drinking water well is the area that contributes water to the well, the groundwater recharge area. This area is designated as the drinking water protection area (DWPA). Because releases of contaminants within the protection area are most likely to impact the drinking water well, this area will serve as the focus for voluntary protection efforts.

An analytical calculation was used to determine the size and shape of the DWPA for Nikiski High School. The input parameters describing the attributes of the aquifer

in this calculation were adopted from Groundwater (*Freeze and Cherry 1979*). Available geology and groundwater contours were also considered to take into account any uncertainties in groundwater flow and aquifer characteristics to arrive at a meaningful protection area.

The protection areas established for wells by the ADEC are usually separated into four zones, limited by the watershed. These zones correspond to differences in the time-of-travel (TOT) of the water moving through the aquifer to the well (Please refer to the Guidance Manual for Class A Public Water Systems for additional information).

The time of travel for contaminants within the water varies and is dependent on the physical and chemical characteristics of each contaminant. The following is a summary of the four protection area zones for wells and the calculated time-of-travel for each:

Table 1. Definition of Zones

| Zone | Definition |
|------|---|
| A | ¼ the distance for the 2-yr. time-of-travel |
| B | Less than 2 years time-of-travel |
| C | Less than 5 years time-of-travel |
| D | Less than 10 years time-of-travel |

The DWPA for the Nikiski High School was determined using an analytical calculation and includes Zone A, B, C, and D (See Map 1 of Appendix A).

INVENTORY OF POTENTIAL AND EXISTING CONTAMINANT SOURCES

The Drinking Water Protection Program has completed an inventory of potential and existing sources of contamination within the Nikiski High School DWPA. This inventory was completed through a search of agency records and other publicly available information. Potential sources of contamination to the drinking water aquifer include a wide range of categories and types. Potential drinking water contaminants are found within agricultural, residential, commercial, and industrial areas, but can also occur within areas that have little or no development.

For the basis of all Class A public water system assessments, six categories of drinking water contaminants were inventoried. They include:

- Bacteria and viruses;
- Nitrates and/or nitrites;
- Volatile organic chemicals;

- Heavy metals, cyanide, and other inorganic chemicals;
- Synthetic organic chemicals; and
- Other organic chemicals.

The sources are displayed on Map 1 of Appendix C and summarized in Table 1 of Appendix B.

RANKING OF CONTAMINANT RISKS

Once the potential and existing sources of contamination have been identified, they are assigned a ranking according to what type and level of risk they represent. Ranking of contaminant risks for a “potential” or “existing” source of contamination is a function of toxicity and volumes of specific contaminants associated with that source. Rankings include:

- Low;
- Medium;
- High; and
- Very High.

The time-of-travel for contaminants within the water varies and is dependent on the physical and chemical characteristics of each contaminant. Bacteria and Viruses are only inventoried in Zones A and B because of their short life span. Only “Very High” and “High” rankings are inventoried within the outer Zone D due to the probability of contaminant dilution by the time the contaminants get to the well.

Tables 2 through 4 in Appendix B contain the ranking of potential and existing sources of contamination with respect to bacteria and viruses, nitrates and/or nitrites, and volatile organic chemicals.

VULNERABILITY OF NIKISKI HIGH SCHOOL DRINKING WATER SYSTEM

Vulnerability of a drinking water source to contamination is a combination of two factors:

- Natural susceptibility; and
- Contaminant risks.

Appendix D contains eight charts, which together form the ‘Vulnerability Analysis’ for a source water assessment for a public drinking water source. Chart 1 analyzes the ‘Susceptibility of the Wellhead’ to contamination by looking at the construction of the well and its surrounding area. Chart 2 analyzes the ‘Susceptibility of the Aquifer’ to contamination by looking at the naturally occurring attributes of the water source and influences on the groundwater system that might lead to contamination. Chart 3 analyzes ‘Contaminant Risks’ for the drinking water source with respect to bacteria and viruses. The ‘Contaminant Risks’ portion of the analysis considers potential

sources of contaminants as well as a review of contamination that has or may have occurred, but has not arrived or been detected at the well. Lastly, Chart 4 contains the ‘Vulnerability Analysis for Bacteria and Viruses’. Charts 5 through 8 contain the Contaminant Risks and Vulnerability Analyses for nitrates and nitrites and volatile organic chemicals, respectively.

A score for the Natural Susceptibility is reached by considering the properties of the well and the aquifer.

Susceptibility of the Wellhead (0 – 25 Points)
(Chart 1 of Appendix D)

+

Susceptibility of the Aquifer (0 – 25 Points)
(Chart 2 of Appendix D)

=

Natural Susceptibility (Susceptibility of the Well)
(0 – 50 Points)

A ranking is assigned for the Natural Susceptibility according to the point score:

Natural Susceptibility Ratings

| | |
|----------------|-----------|
| 40 to 50 pts | Very High |
| 30 to < 40 pts | High |
| 20 to < 30 pts | Medium |
| < 20 pts | Low |

The well for Nikiski High School is completed in a confined aquifer setting. Studies and well logs in the area indicate a confining layer exists approximately from 100-125 feet. This confining layer may provide a protective barrier from the movement of contaminants in the subsurface. However, wells penetrating the confining layer may provide a quick path for contaminants to enter the confining aquifer. Table 2 shows the Susceptibility scores and ratings for the Nikiski High School .

Table 2. Susceptibility

| | Score | Rating |
|--------------------------------|-------|-----------|
| Susceptibility of the Wellhead | 5 | Low |
| Susceptibility of the Aquifer | 21 | Very High |
| Natural Susceptibility | 26 | Medium |

Contaminant risks to a drinking water source depend on the type, number or density, and distribution of

contaminant sources. This score has been derived from an examination of existing and historical contamination that has been detected at the drinking water source through routine sampling. It also evaluates potential sources of contamination. Flow charts are used to assign a point score, and ratings are assigned in the same way as for the natural susceptibility:

| Contaminant Risk Ratings | |
|--------------------------|-----------|
| 40 to 50 pts | Very High |
| 30 to < 40 pts | High |
| 20 to < 30 pts | Medium |
| < 20 pts | Low |

Table 3 summarizes the Contaminant Risks for each category of drinking water contaminants..

Table 3. Contaminant Risks

| Category | Score | Rating |
|--|-------|-----------|
| Bacteria and Viruses | 25 | Medium |
| Nitrates and/or Nitrites | 25 | Medium |
| Volatile Organic Chemicals | 14 | Low |
| Heavy Metals, Cyanide, and Other Inorganic Chemicals | 50 | Very High |
| Synthetic Organic Chemicals | 12 | Low |
| Other Organic Chemicals | 35 | High |

Finally, an overall vulnerability score is assigned for each water system by combining each of the contaminant risk scores with the natural susceptibility score:

$$\begin{array}{r}
 \text{Natural Susceptibility (0 – 50 points)} \\
 + \\
 \text{Contaminant Risks (0 – 50 points)} \\
 = \\
 \text{Vulnerability of the} \\
 \text{Drinking Water Source to Contamination (0 – 100).}
 \end{array}$$

Again, rankings are assigned according to a point score:

| Overall Vulnerability Ratings | |
|-------------------------------|-----------|
| 80 to 100 pts | Very High |
| 60 to < 80 pts | High |
| 40 to < 60 pts | Medium |
| < 40 pts | Low |

Table 4 contains the overall vulnerability scores (0 – 100) and ratings for each of the three categories of drinking water contaminants. Note: scores are rounded off to the nearest five.

Table 4. Overall Vulnerability

| Category | Score | Rating |
|--|-------|--------|
| Bacteria and Viruses | 50 | Medium |
| Nitrates and Nitrites | 50 | Medium |
| Volatile Organic Chemicals | 75 | High |
| Heavy Metals, Cyanide, and Other Inorganic Chemicals | 75 | High |
| Synthetic Organic Chemicals | 35 | Low |
| Other Organic Chemicals | 60 | High |

Bacteria and Viruses

Septic systems, waste disposal wells and residential areas in the protection area represent the greatest risk for bacteria and viruses to the drinking water well.

Only a small amount of bacteria and viruses are required to endanger public health. Coli forms are found naturally in the environment and although they aren't necessarily a health threat, it is an indicator of other potentially harmful bacteria in the water, more specifically, fecal coli forms and E. coli which only come from human and animal fecal waste (EPA, 2002). Harmful bacteria can cause diarrhea, cramps, nausea, headaches, or other symptoms (EPA, 2002). Sampling has not detected bacteria within source waters.

After combining the contaminant risk for bacteria and viruses with the natural susceptibility of the well, the overall vulnerability of the well to contamination is medium.

Nitrates and Nitrites

The septic systems, residential area and motor vehicle waste disposal in the protection area also represent the greatest risk to nitrates and nitrites for this source of public drinking water.

Nitrates are very mobile, moving at approximately the same rate as water. Recent samplings have not detected nitrates.

After combining the contaminant risk for nitrates and nitrites with the natural susceptibility of the well, the overall vulnerability of the well to contamination is medium.

Volatile Organic Chemicals

The motor vehicle waste disposal wells, septic systems, residential area and roads represent the greatest identified risk for volatile organic chemical contamination to the well.

Approximately 20% residents in the area typically heat their homes with various types of on-site fuel sources, including propane and heating oil stored in aboveground or underground storage tanks. Although this report does not address heating oil tanks (unless their location is known), they can pose a risk of volatile organic chemical contamination to drinking water sources. The most common causes of fuel leaks of these heating oil systems are overfilling the tank, ruptured fuel lines, leaking storage tanks, damaged or faulty valves and vandalism. Secondary containment around the tank and regular system maintenance can help prevent many of these harmful fuel leaks and help protect the drinking water supply.

Volatile Organic Chemicals have not been detected within source waters. After combining the contaminant risk for volatile organic chemicals with the natural susceptibility of the well, the overall vulnerability of the well to contamination is high.

Heavy Metals, Cyanide, and Other Inorganic Chemicals

Motor vehicle waste disposal wells, septic systems, roads, residential areas and existing contamination present the greatest risk for inorganic chemicals to the well.

Samplings of inorganic chemicals have detected thallium and barium, at levels below their respective maximum contaminant levels (MCLs). The MCL is the maximum level of contaminant that is allowed to exist in drinking water and still be consumed by humans without harmful health effects.

Arsenic was also detected at levels exceeding the MCL of 0.010 mg/l. Further sampling of additional wells in the area indicates arsenic levels are naturally elevated. Prolonged exposure to levels exceeding the MCL can skin damage, problems with circulatory systems, and may create an increased risk of developing cancer (EPA, 2002).

After combining the contaminant risk for heavy metals, cyanide and other inorganic chemicals with the natural susceptibility of the well, the overall vulnerability of the well to contamination is high.

Synthetic Organic Chemicals

The large capacity septic system, residential septic systems, and residential areas represent the greatest risk for synthetic organic chemicals to the well.

Synthetic organic chemicals have not been sampled for in this water system.

After combining the contaminant risk for synthetic organic chemicals with the natural susceptibility of the well, the overall vulnerability of the well to contamination is low.

Other Organic Chemicals

Motor vehicle waste disposal wells, septic systems, residential areas and swimming pools represents the greatest risk for other organic chemicals to the well.

Other organic chemicals have not been sampled for in this water system.

After combining the contaminant risk for synthetic organic chemicals with the natural susceptibility of the well, the overall vulnerability of the well to contamination is high.

REFERENCES

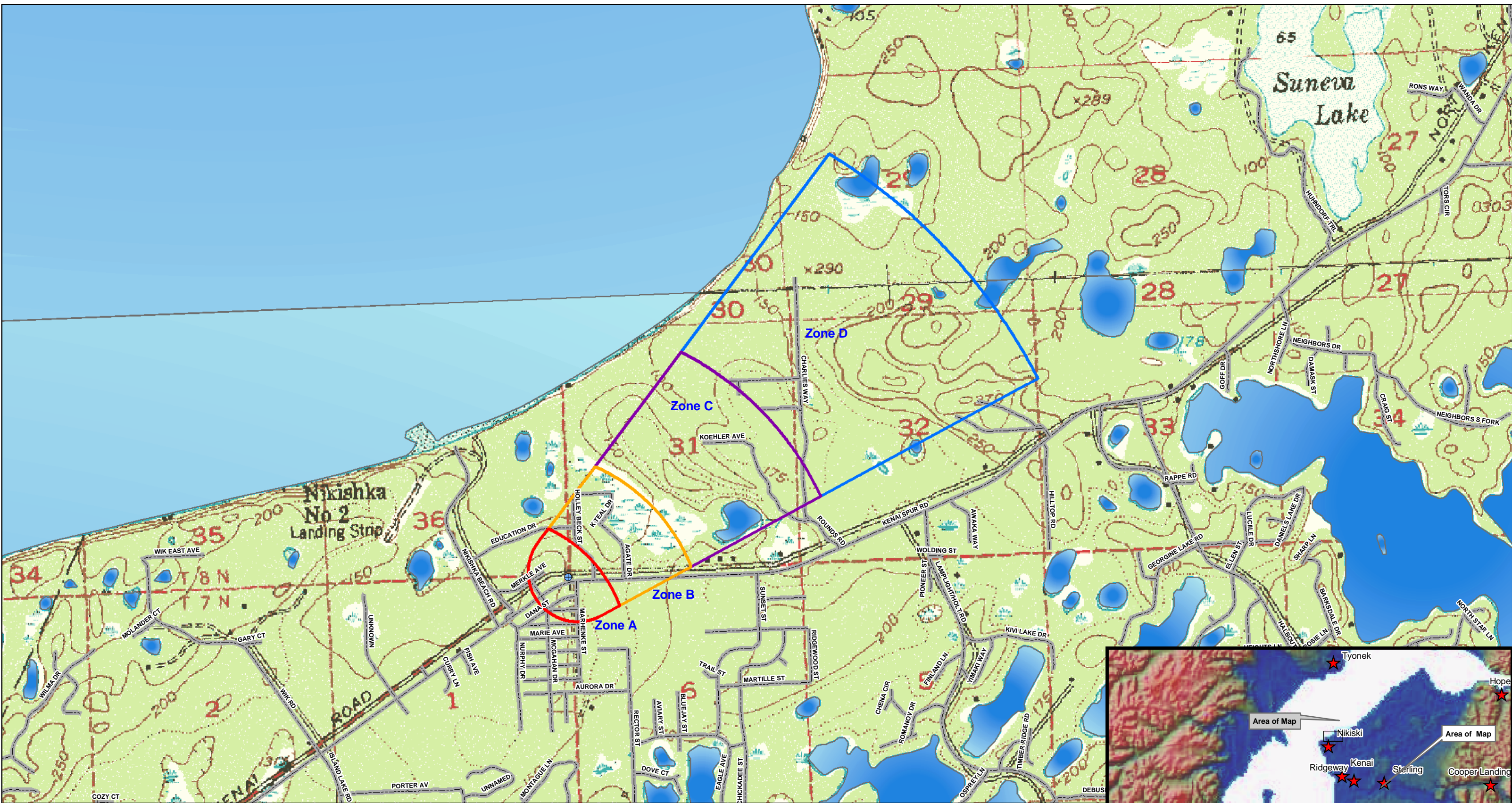
- Alaska Department of Community and Economic Development (ADCED), 2002 [WWW document]. URL http://www.dced.state.ak.us/mra/CF_BLOCK.cfm.
- Alaska Department of Environmental Conservation, Contaminated Sites Database, 2003 [WWW database], URL http://www.state.ak.us/dec/dspar/csites/cs_search.htm
- Alaska Department of Environmental Conservation, Leaking Underground Storage Tank Database, 2003 [WWW database], URL http://www.dec.state.ak.us/spar/stp/ust/search/fac_search.asp
- Bailey, B.J., and Hogan, E.V., 1995 Overview of environmental and hydrogeologic conditions near Kenai, Alaska. U.S. Geological Survey Open-File Report 95-410, 18 p.
- Dames and Moore, 1993 Water Supply Well PW-4 Design and Installation Kenai Peninsula Borough, Kenai Alaska. Prepared for Phillips Petroleum Corporation.
- Freethy, G.W., and Scully, D.R. 1980 Water Resources of the Cook Inlet Basin, Alaska. U.S. Geological Survey Hydrologic Investigation Atlas HA-620, prepared in cooperation with Alaska Water Study Committee, State of Alaska Department of Natural Resources, and Division of Geological and Geophysical Surveys.
- Freeze, R. A., and Cherry, J.A. 1979, Groundwater, Prentice-Hall, Englewood Cliffs, New Jersey
- Glass, Roy, L. 1996 Groundwater Conditions and Quality in the Western Part of the Kenai Peninsula, Southcentral Alaska. U.S. Geological Survey Open File Report 94-466, prepared in cooperation with the Alaska Department of Natural Resources, Kenai Peninsula Borough, and Kenai Soil and Water Conservation District.
- Hartman, D.C., Pessel, G.H., and McGee, D.I., 1972 Kenai Group of Cook Inlet Basin, Alaska: State of Alaska. Open File Report #49, Department of Natural Resources Division of Geological and Geophysical Surveys, 5p.
- Karlstrom, T.N.V. 1964 Quaternary geology of the Kenai Lowland and glacial history of the Cook Inlet region, Alaska. U.S. Geological Survey Professional Paper 443, 64 p.
- Kenai River Watershed, 2002 [WWW document]. URL http://www.kenai-watershed.org/spawning/kenai_river/kenai_river.html.
- Martin, G.C., Johnson, B.L., and Grant, 1915, Geology and mineral resources of Kenai Peninsula, Alaska: US Geological Survey Bulletin 587, 243 p., maps.
- United States Environmental Protection Agency (EPA), 2002 [WWW document]. URL <http://www.epa.gov/safewater/mcl.html>.

ACKNOWLEDGMENT

Source Water Assessments in the Nikiski area were jointly prepared by ADEC-Drinking Water Protection Program and URS Corporation. The Drinking Water Protection Program would like to thank URS Corporation for their efforts in researching the area.

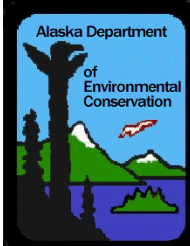
APPENDIX A

Nikiski High School Drinking Water Protection Area Location Map (Map 1)



Map 1- KPBSD Nikiski High Potential and Existing Source of Contamination

PWSID: 244484.001

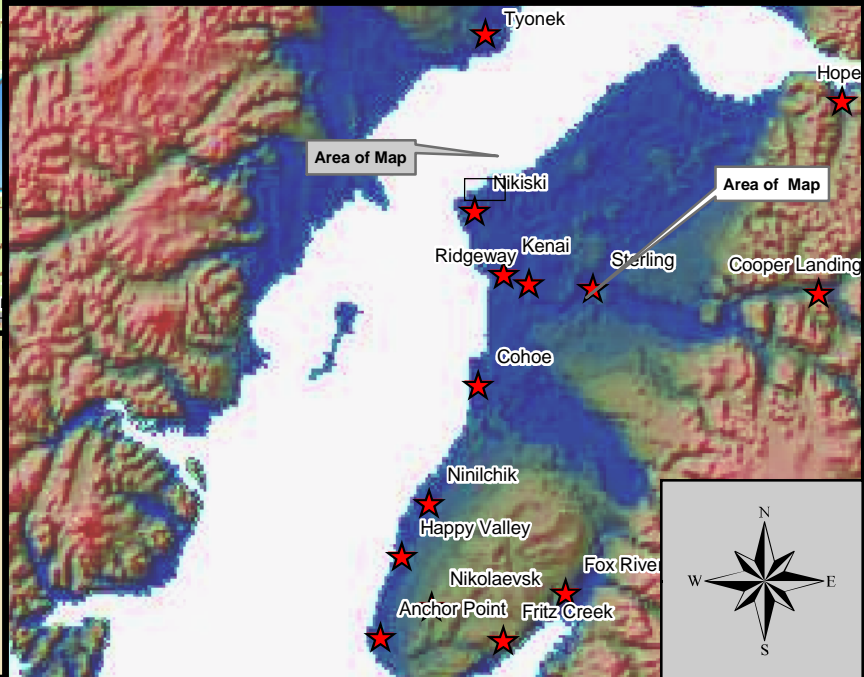


0 2,000 4,000 Feet
1:23,580

Data Sources:
Kenai Borough: Roads and parcels
Aerial Photo: USGS and Microsoft Terraserver
Potential Sources of Contamination: ADEC

Legend

| | |
|-----------------------------|--------------------|
| Class A Public Water System | Roads |
| Zone A Protection Area | Water |
| Zone B Protection Area | Rivers and Streams |
| Zone C Protection Area | |
| Zone D Protection Area | |



APPENDIX B

Contaminant Source Inventory and Risk Ranking for Nikiski High School (Tables 1-7)

Table 1**Contaminant Source Inventory for
KPBSD Nikiski High School****PWSID 244484.001**

| Contaminant Source Type | Contaminant Source ID | CS ID tag | Zone | Map Number | Comments |
|---|------------------------------|------------------|-------------|-------------------|--------------------------|
| Injection wells (Class V) Motor Vehicle Waste Disposal Well | D42 | D42-01 | A | 2 | ~0.29 acres in Zone A |
| Injection wells (Class V) Motor Vehicle Waste Disposal Well | D42 | D42-02 | A | 2 | |
| Injection wells (Class V) Motor Vehicle Waste Disposal Well | D42 | D42-03 | A | 2 | |
| Residential Areas | R01 | R01-1 | A | 2 | |
| Septic systems (serves one single-family home) | R02 | R02-1-10 | A | 2 | |
| Highways and roads, dirt/gravel | X24 | X24-01-4 | A | 2 | Zone A has 4 roads |
| Motor vehicle/general storage yards/facilities | X27 | X27-01 | A | 2 | Nikiski High parking lot |
| Swimming pools (public) | X44 | X44-1 | A | 2 | |
| Residential Areas | R01 | R01-02 | B | 2 | ~0.15 acres in Zone B |
| Septic systems (serves one single-family home) | R02 | R02-11-13 | B | 2 | |
| Highways and roads, dirt/gravel | X24 | X24-05-07 | B | 2 | Zone B has 2 roads |
| Residential Areas | R01 | R01-03 | C | 2 | ~5.27 acres in Zone C |
| Highways and roads, dirt/gravel | X24 | X24-08-9 | C | 2 | Zone C has 2 roads |

Table 2

*Contaminant Source Inventory and Risk Ranking for
KPBSD Nikiski High School
Sources of Bacteria and Viruses*

PWSID 244484.001

| <i>Contaminant Source Type</i> | <i>Contaminant Source ID</i> | <i>CS ID tag</i> | <i>Zone</i> | <i>Risk Ranking for Analysis</i> | <i>Map Number</i> | <i>Comments</i> |
|---|------------------------------|------------------|-------------|----------------------------------|-------------------|-----------------------|
| Injection wells (Class V) Motor Vehicle Waste Disposal Well | D42 | D42-01 | A | Low | 2 | ~0.29 acres in Zone A |
| Injection wells (Class V) Motor Vehicle Waste Disposal Well | D42 | D42-02 | A | Low | 2 | |
| Injection wells (Class V) Motor Vehicle Waste Disposal Well | D42 | D42-03 | A | Low | 2 | |
| Residential Areas | R01 | R01-1 | A | Low | 2 | |
| Septic systems (serves one single-family home) | R02 | R02-1-10 | A | Low | 2 | |
| Highways and roads, dirt/gravel | X24 | X24-01-4 | A | Low | 2 | Zone A has 4 roads |
| Residential Areas | R01 | R01-02 | B | Low | 2 | ~0.15 acres in Zone B |
| Septic systems (serves one single-family home) | R02 | R02-11-13 | B | Low | 2 | |
| Highways and roads, dirt/gravel | X24 | X24-05-07 | B | Low | 2 | Zone B has 2 roads |

Table 3

*Contaminant Source Inventory and Risk Ranking for
KPBSD Nikiski High School
Sources of Nitrates/Nitrites*

PWSID 244484.001

| <i>Contaminant Source Type</i> | <i>Contaminant Source ID</i> | <i>CS ID tag</i> | <i>Zone</i> | <i>Risk Ranking for Analysis</i> | <i>Map Number</i> | <i>Comments</i> |
|--|------------------------------|------------------|-------------|----------------------------------|-------------------|-----------------------|
| Residential Areas | R01 | R01-1 | A | Low | 2 | |
| Septic systems (serves one single-family home) | R02 | R02-1-10 | A | Low | 2 | |
| Highways and roads, dirt/gravel | X24 | X24-01-4 | A | Low | 2 | Zone A has 4 roads |
| Residential Areas | R01 | R01-02 | B | Low | 2 | ~0.15 acres in Zone B |
| Septic systems (serves one single-family home) | R02 | R02-11-13 | B | Low | 2 | |
| Highways and roads, dirt/gravel | X24 | X24-05-07 | B | Low | 2 | Zone B has 2 roads |
| Residential Areas | R01 | R01-03 | C | Low | 2 | ~5.27 acres in Zone C |
| Highways and roads, dirt/gravel | X24 | X24-08-9 | C | Low | 2 | Zone C has 2 roads |

Table 4

*Contaminant Source Inventory and Risk Ranking for
 KPBSD Nikiski High School
 Sources of Volatile Organic Chemicals*

PWSID 244484.001

| <i>Contaminant Source Type</i> | <i>Contaminant Source ID</i> | <i>CS ID tag</i> | <i>Zone</i> | <i>Risk Ranking for Analysis</i> | <i>Map Number</i> | <i>Comments</i> |
|---|------------------------------|------------------|-------------|----------------------------------|-------------------|--------------------------|
| Injection wells (Class V) Motor Vehicle Waste Disposal Well | D42 | D42-01 | A | High | 2 | ~0.29 acres in Zone A |
| Injection wells (Class V) Motor Vehicle Waste Disposal Well | D42 | D42-02 | A | High | 2 | |
| Injection wells (Class V) Motor Vehicle Waste Disposal Well | D42 | D42-03 | A | High | 2 | |
| Residential Areas | R01 | R01-1 | A | Low | 2 | |
| Septic systems (serves one single-family home) | R02 | R02-1-10 | A | Low | 2 | |
| Highways and roads, dirt/gravel | X24 | X24-01-4 | A | Low | 2 | Zone A has 4 roads |
| Motor vehicle/general storage yards/facilities | X27 | X27-01 | A | Low | 2 | Nikiski High parking lot |
| Residential Areas | R01 | R01-02 | B | Low | 2 | ~0.15 acres in Zone B |
| Septic systems (serves one single-family home) | R02 | R02-11-13 | B | Low | 2 | |
| Highways and roads, dirt/gravel | X24 | X24-05-07 | B | Low | 2 | Zone B has 2 roads |
| Residential Areas | R01 | R01-03 | C | Low | 2 | ~5.27 acres in Zone C |
| Highways and roads, dirt/gravel | X24 | X24-08-9 | C | Low | 2 | Zone C has 2 roads |

Table 5

*Contaminant Source Inventory and Risk Ranking for
 KPBSD Nikiski High School
 Sources of Heavy Metals, Cyanide and Other Inorganic Chemicals*

PWSID 244484.001

| <i>Contaminant Source Type</i> | <i>Contaminant Source ID</i> | <i>CS ID tag</i> | <i>Zone</i> | <i>Risk Ranking for Analysis</i> | <i>Map Number</i> | <i>Comments</i> |
|---|------------------------------|------------------|-------------|----------------------------------|-------------------|-----------------------|
| Injection wells (Class V) Motor Vehicle Waste Disposal Well | D42 | D42-01 | A | High | 2 | ~0.29 acres in Zone A |
| Injection wells (Class V) Motor Vehicle Waste Disposal Well | D42 | D42-02 | A | High | 2 | |
| Injection wells (Class V) Motor Vehicle Waste Disposal Well | D42 | D42-03 | A | High | 2 | |
| Residential Areas | R01 | R01-1 | A | Low | 2 | |
| Septic systems (serves one single-family home) | R02 | R02-1-10 | A | Low | 2 | |
| Highways and roads, dirt/gravel | X24 | X24-01-4 | A | Low | 2 | Zone A has 4 roads |
| Residential Areas | R01 | R01-02 | B | Low | 2 | ~0.15 acres in Zone B |
| Septic systems (serves one single-family home) | R02 | R02-11-13 | B | Low | 2 | |
| Highways and roads, dirt/gravel | X24 | X24-05-07 | B | Low | 2 | Zone B has 2 roads |
| Residential Areas | R01 | R01-03 | C | Low | 2 | ~5.27 acres in Zone C |
| Highways and roads, dirt/gravel | X24 | X24-08-9 | C | Low | 2 | Zone C has 2 roads |

Table 6

*Contaminant Source Inventory and Risk Ranking for
KPBSD Nikiski High School
Sources of Synthetic Organic Chemicals*

PWSID 244484.001

| <i>Contaminant Source Type</i> | <i>Contaminant Source ID</i> | <i>CS ID tag</i> | <i>Zone</i> | <i>Risk Ranking for Analysis</i> | <i>Map Number</i> | <i>Comments</i> |
|---|------------------------------|------------------|-------------|----------------------------------|-------------------|-----------------------|
| Injection wells (Class V) Motor Vehicle Waste Disposal Well | D42 | D42-01 | A | Low | 2 | ~0.29 acres in Zone A |
| Injection wells (Class V) Motor Vehicle Waste Disposal Well | D42 | D42-02 | A | Low | 2 | |
| Injection wells (Class V) Motor Vehicle Waste Disposal Well | D42 | D42-03 | A | Low | 2 | |
| Residential Areas | R01 | R01-1 | A | Low | 2 | |
| Septic systems (serves one single-family home) | R02 | R02-1-10 | A | Low | 2 | |
| Swimming pools (public) | X44 | X44-1 | A | Low | 2 | |
| Residential Areas | R01 | R01-02 | B | Low | 2 | ~0.15 acres in Zone B |
| Septic systems (serves one single-family home) | R02 | R02-11-13 | B | Low | 2 | |
| Residential Areas | R01 | R01-03 | C | Low | 2 | ~5.27 acres in Zone C |

Table 7

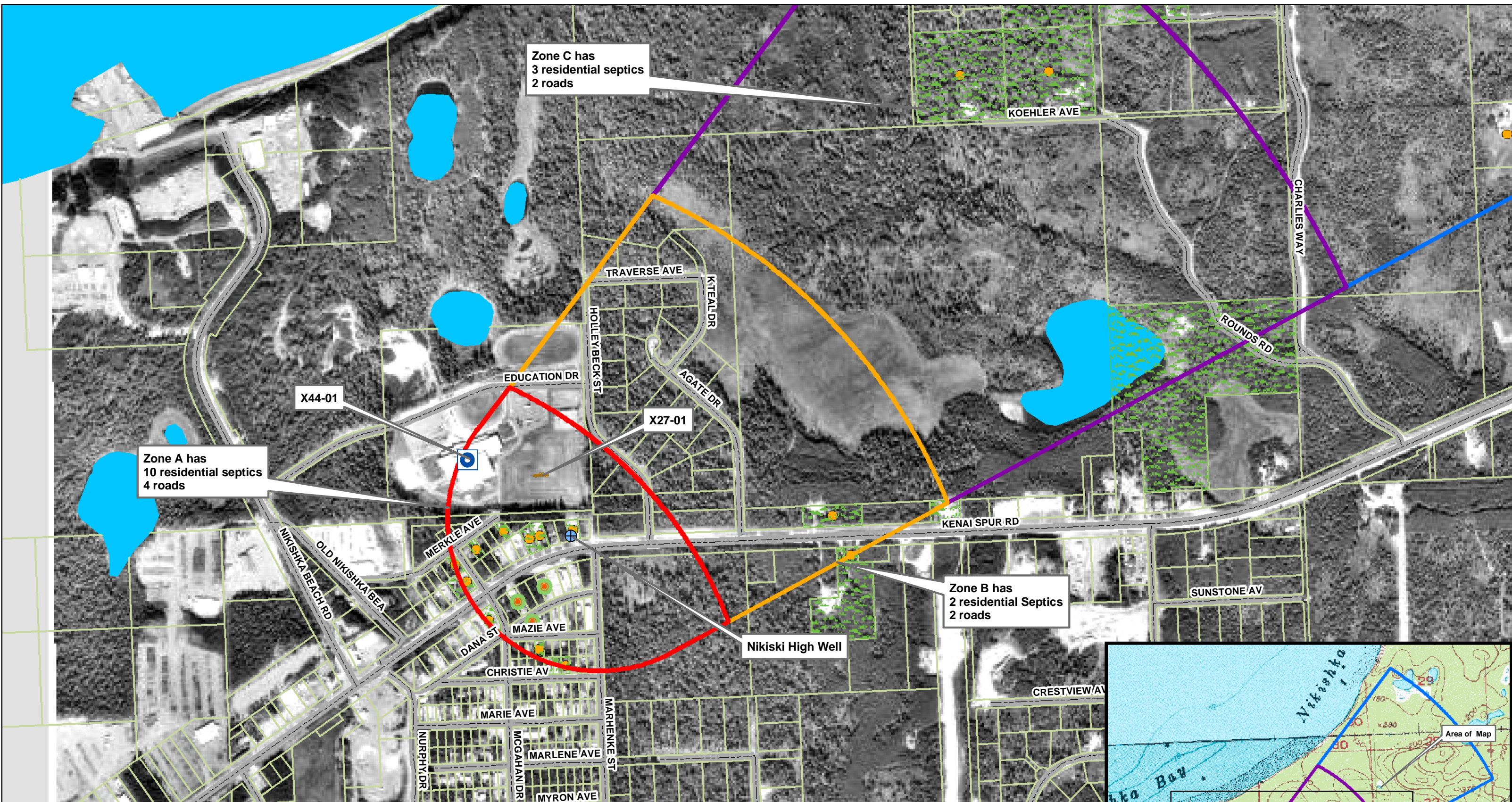
*Contaminant Source Inventory and Risk Ranking for
 KPBSD Nikiski High School
 Sources of Other Organic Chemicals*

PWSID 244484.001

| <i>Contaminant Source Type</i> | <i>Contaminant Source ID</i> | <i>CS ID tag</i> | <i>Zone</i> | <i>Risk Ranking for Analysis</i> | <i>Map Number</i> | <i>Comments</i> |
|---|------------------------------|------------------|-------------|----------------------------------|-------------------|--------------------------|
| Injection wells (Class V) Motor Vehicle Waste Disposal Well | D42 | D42-01 | A | Medium | 2 | ~0.29 acres in Zone A |
| Injection wells (Class V) Motor Vehicle Waste Disposal Well | D42 | D42-02 | A | Medium | 2 | |
| Injection wells (Class V) Motor Vehicle Waste Disposal Well | D42 | D42-03 | A | Medium | 2 | |
| Residential Areas | R01 | R01-1 | A | Low | 2 | |
| Septic systems (serves one single-family home) | R02 | R02-1-10 | A | Low | 2 | |
| Highways and roads, dirt/gravel | X24 | X24-01-4 | A | Low | 2 | Zone A has 4 roads |
| Motor vehicle/general storage yards/facilities | X27 | X27-01 | A | Low | 2 | Nikiski High parking lot |
| Residential Areas | R01 | R01-02 | B | Low | 2 | ~0.15 acres in Zone B |
| Septic systems (serves one single-family home) | R02 | R02-11-13 | B | Low | 2 | |
| Highways and roads, dirt/gravel | X24 | X24-05-07 | B | Low | 2 | Zone B has 2 roads |
| Residential Areas | R01 | R01-03 | C | Low | 2 | ~5.27 acres in Zone C |
| Highways and roads, dirt/gravel | X24 | X24-08-9 | C | Low | 2 | Zone C has 2 roads |

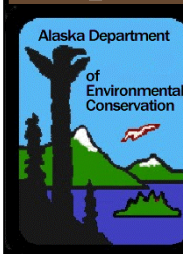
APPENDIX C

Nikiski High School Drinking Water Protection Area and Potential and Existing Contaminant Sources (Map 2)



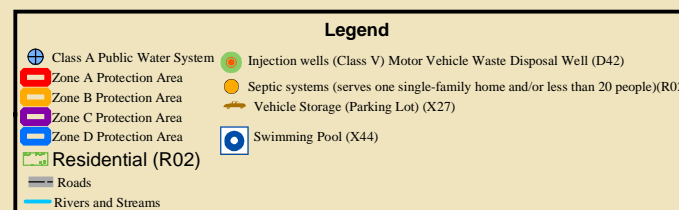
Map 2- KPBSD Nikiski High Potential and Existing Source of Contamination

PWSID: 244484.001



0 275 550 1,100 Feet
1:7,681

Data Sources:
Kenai Borough: Roads and parcels
Aerial Photo: USGS and Terraserver-USA
Potential Sources of Contamination: ADEC



APPENDIX D

Vulnerability Analysis for Nikiski High School Public Drinking Water Source (Charts 1-14)

Chart 1. Susceptibility of the wellhead - Nikiski High School PWSID 244484.001

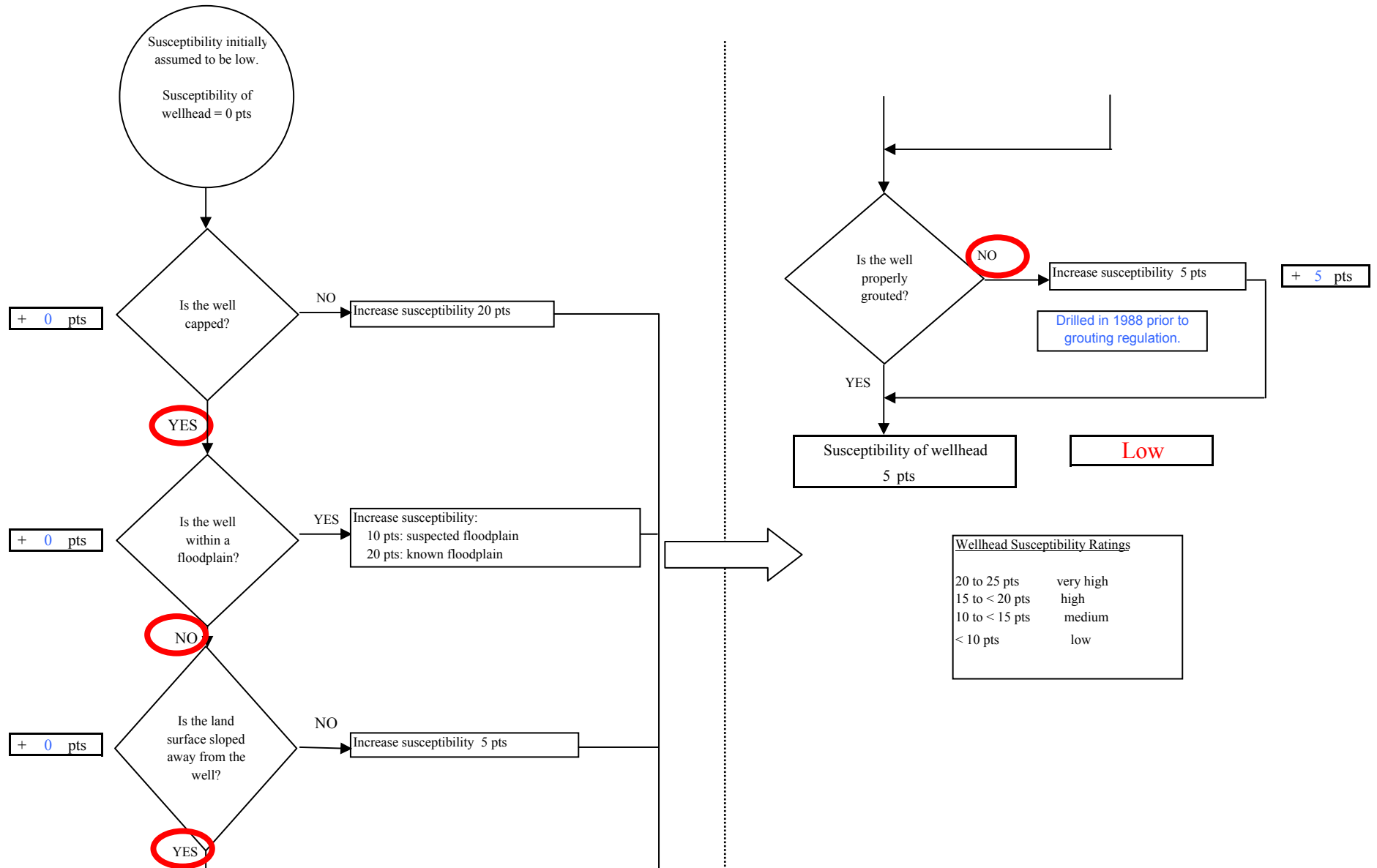


Chart 2. Susceptibility of the aquifer - Nikiski High School PWSID 244484.001

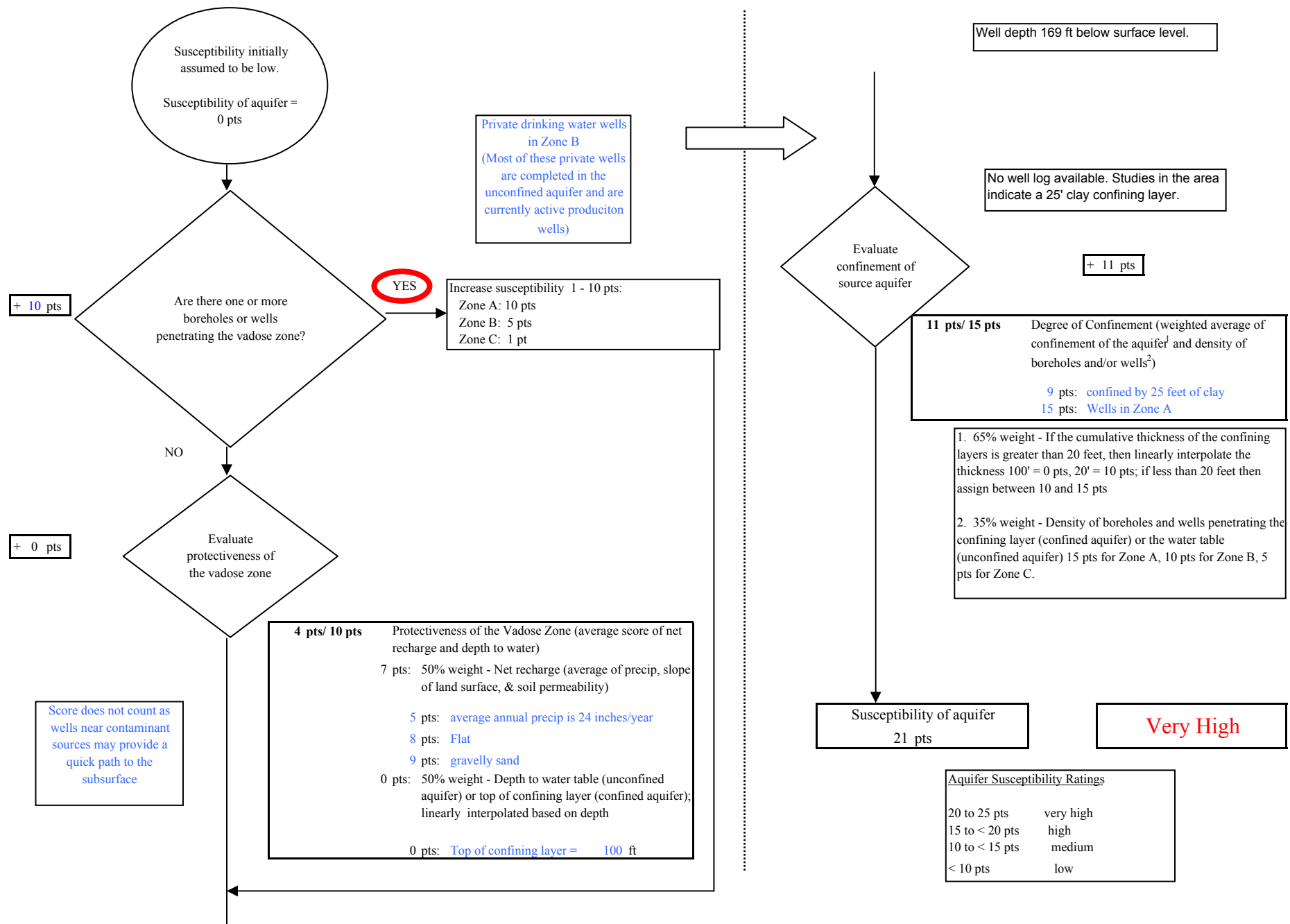


Chart 3. Contaminant risks for Nikiski High School PWSID 244484.001 - Bacteria & Viruses

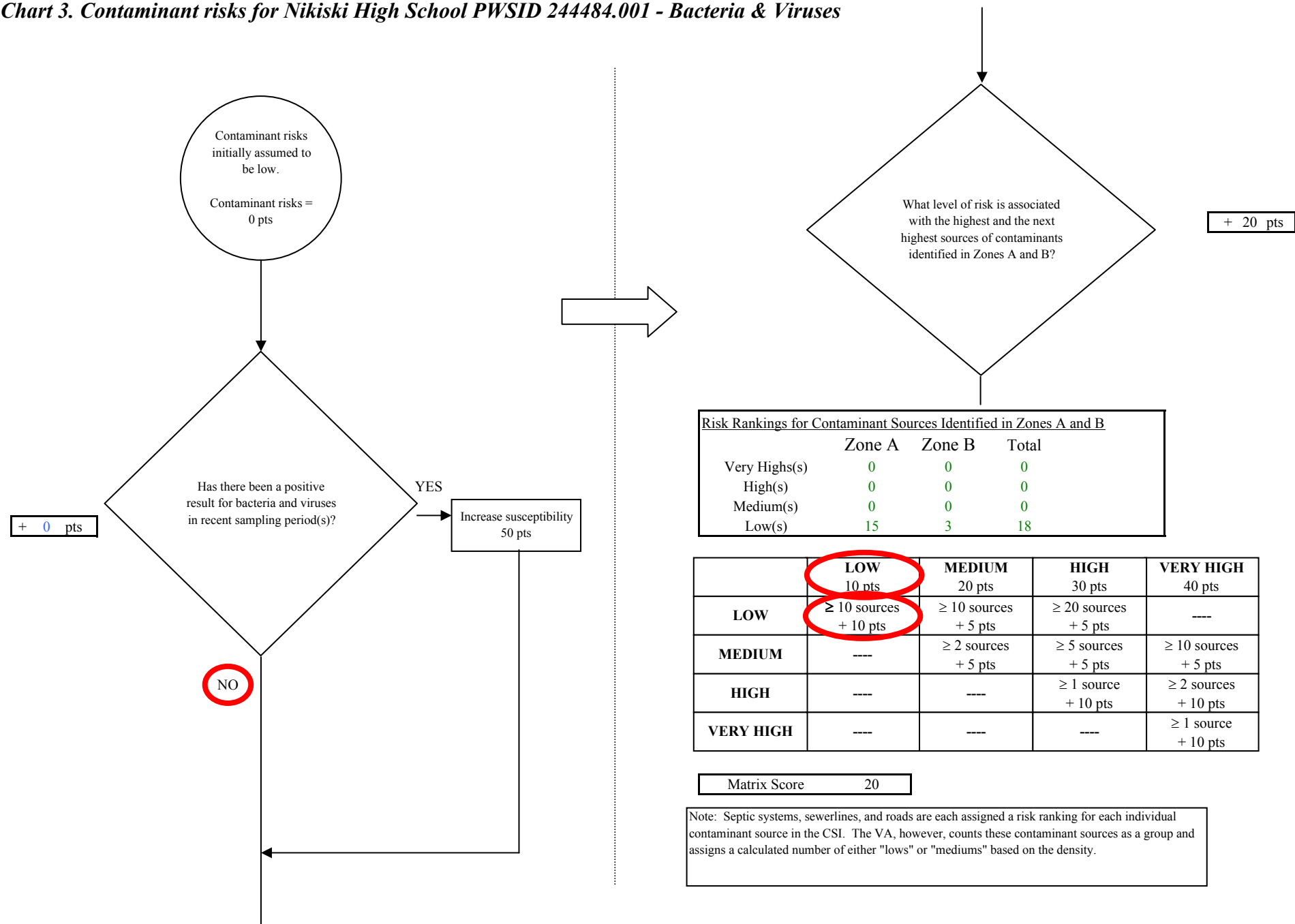


Chart 3. Contaminant risks for Nikiski High School PWSID 244484.001 - Bacteria & Viruses

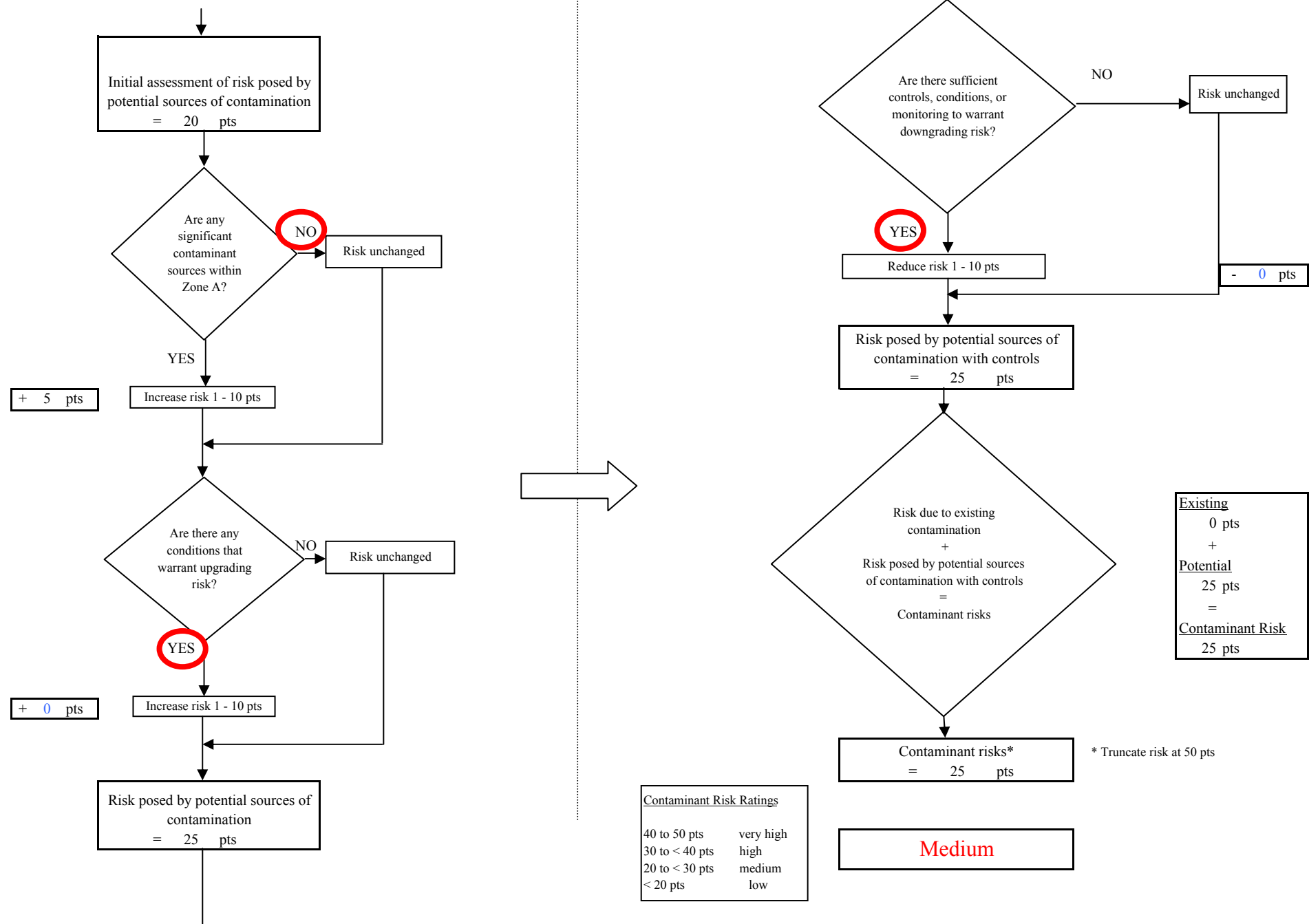


Chart 4. Vulnerability analysis for Nikiski High School PWSID 244484.001 - Bacteria & Viruses

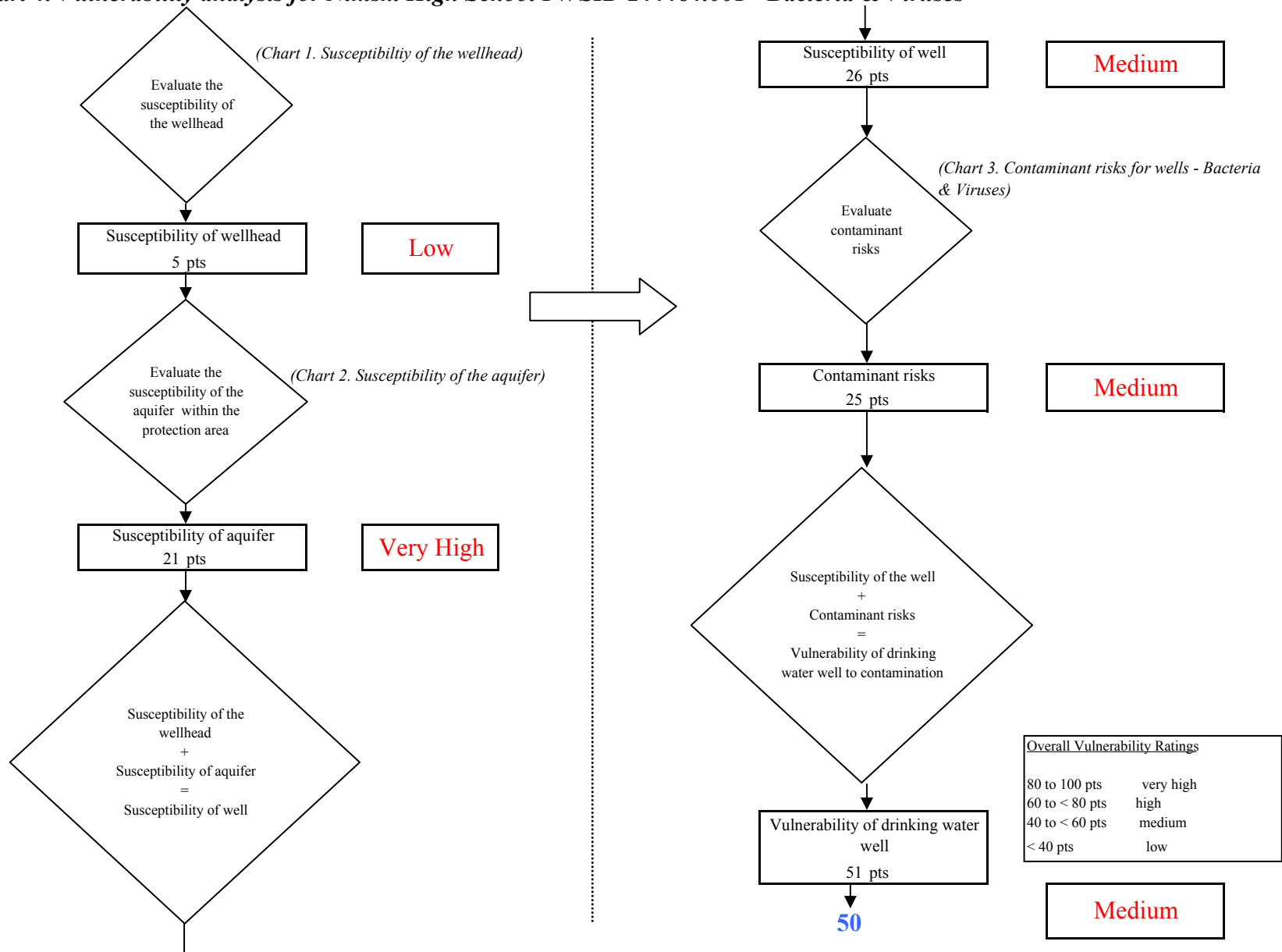


Chart 5. Contaminant risks for Nikiski High School PWSID 244484.001 - Nitrates and Nitrites

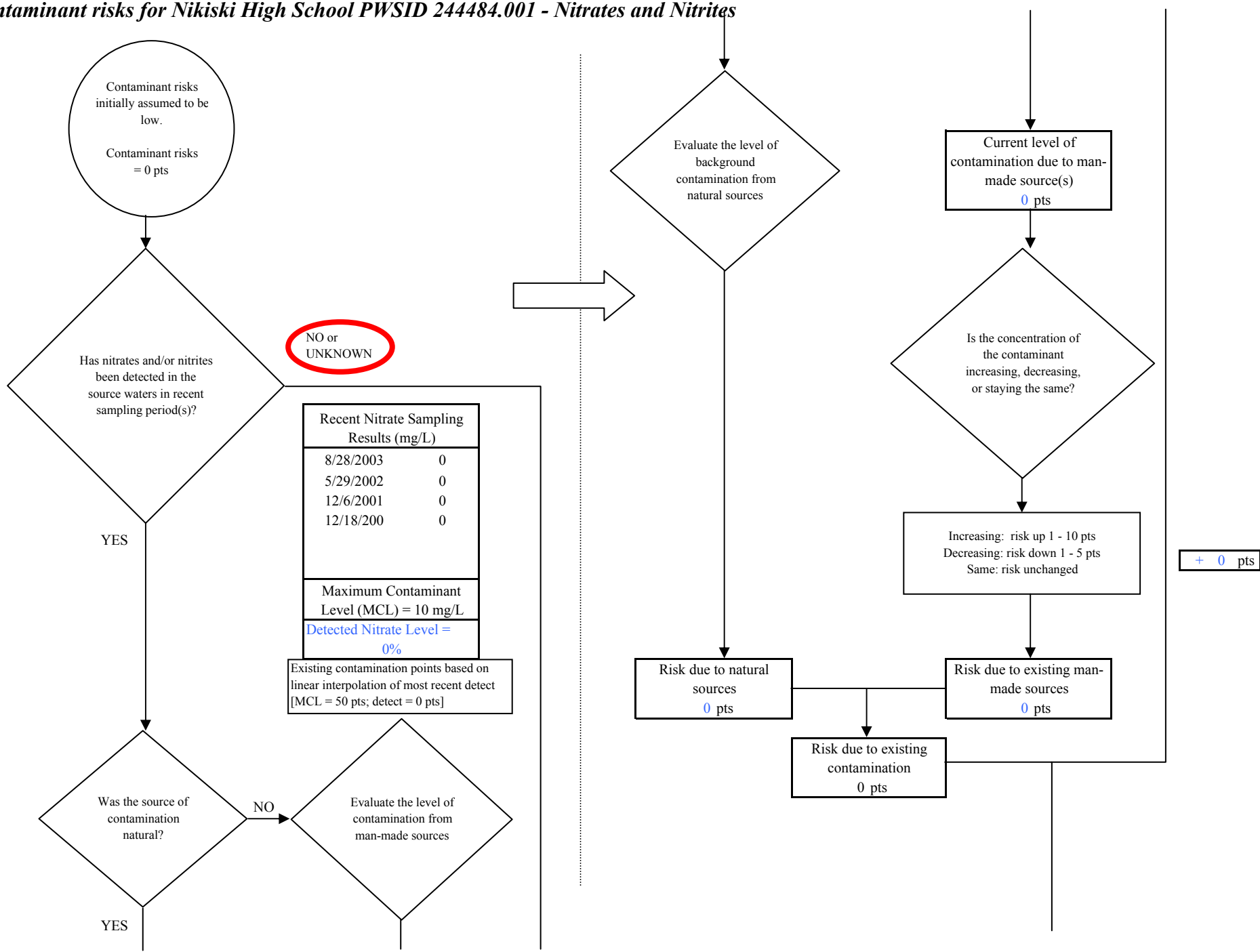


Chart 5. Contaminant risks for Nikiski High School PWSID 244484.001 - Nitrates and Nitrites

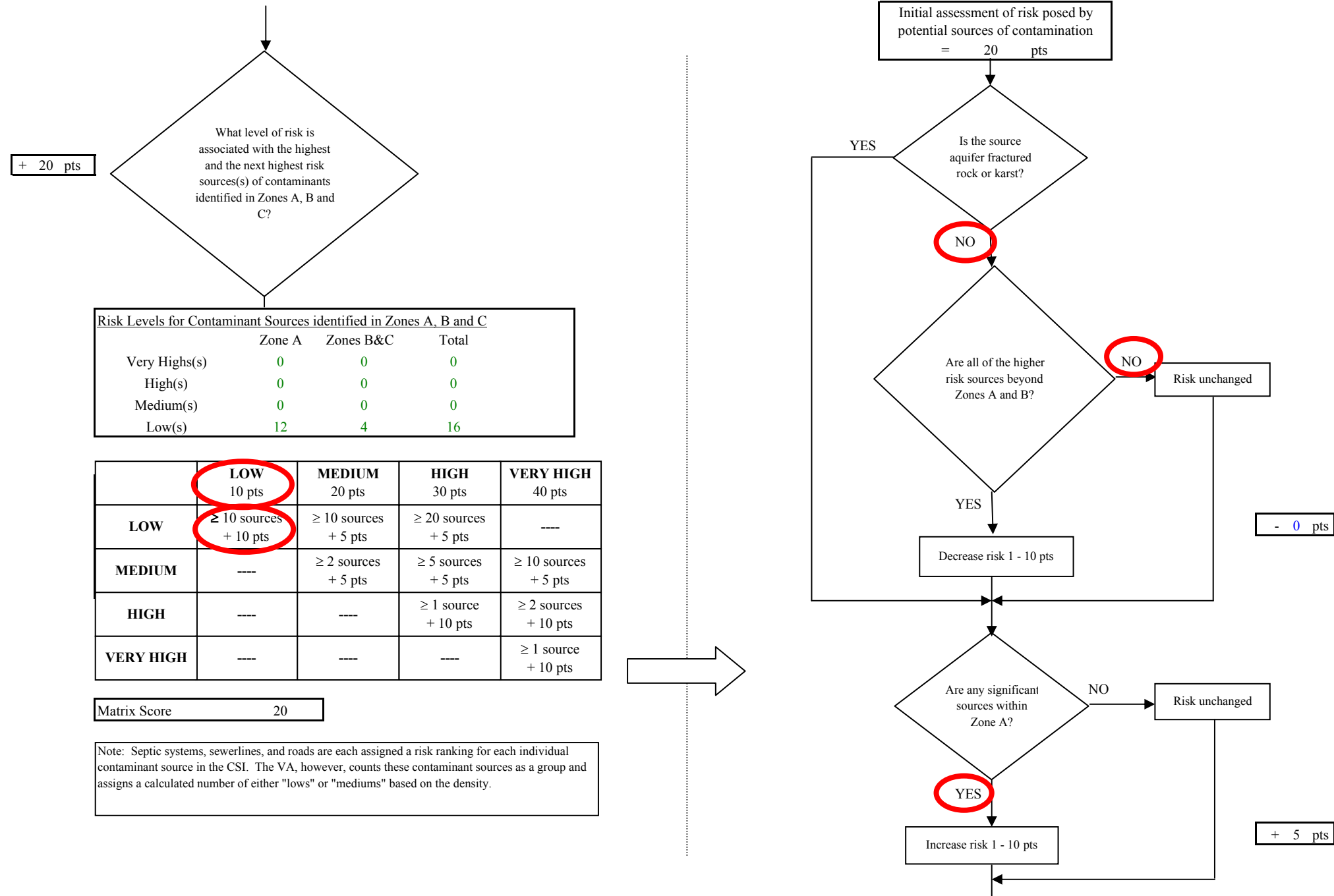


Chart 5. Contaminant risks for Nikiski High School PWSID 244484.001 - Nitrates and Nitrites

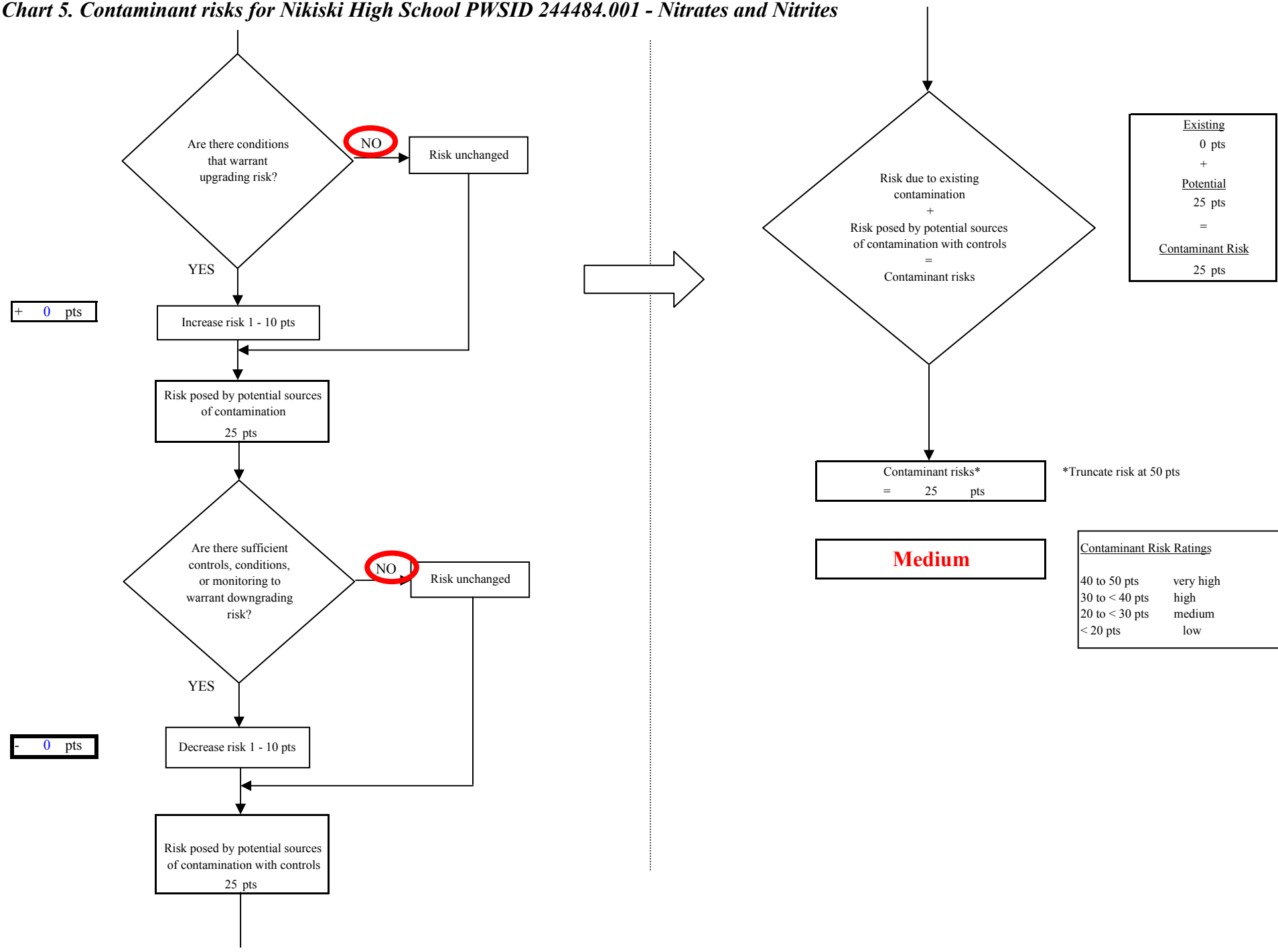


Chart 6. Vulnerability analysis for Nikiski High School PWSID 244484.001 - Nitrates and Nitrites

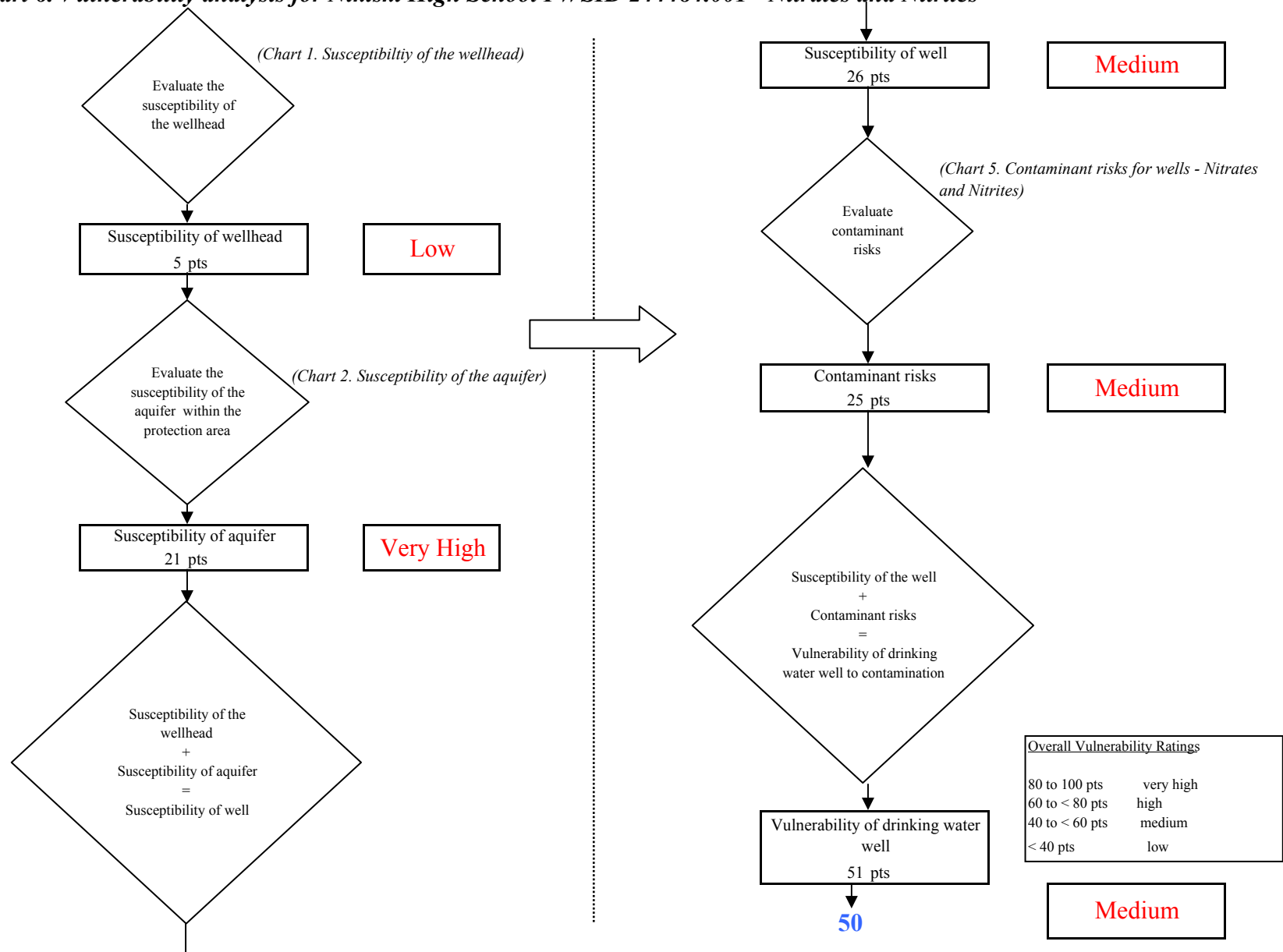


Chart 7. Contaminant risks for Nikiski High School PWSID 244484.001 - Volatile Organic Chemicals

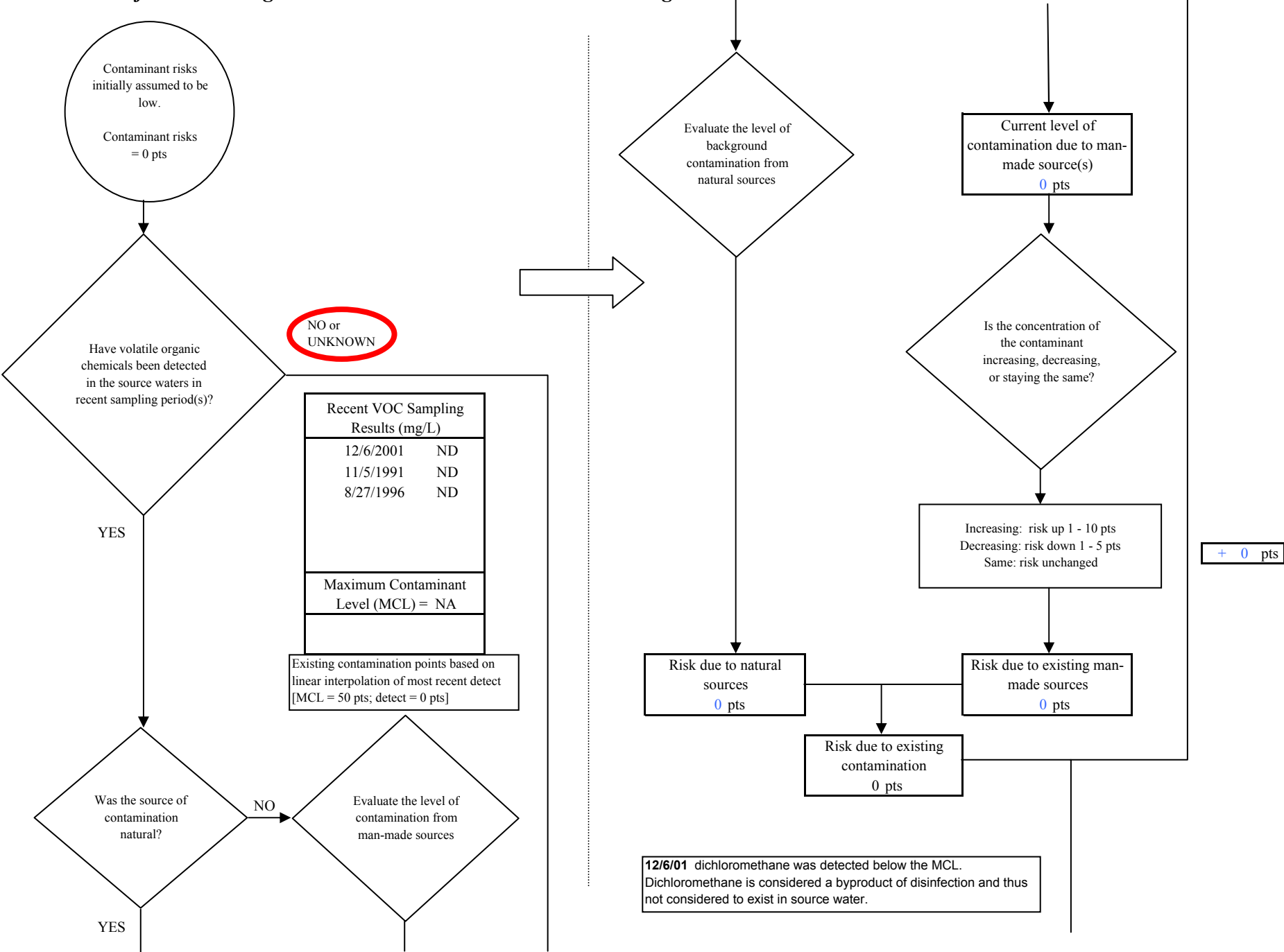


Chart 7. Contaminant risks for Nikiski High School PWSID 244484.001 - Volatile Organic Chemicals

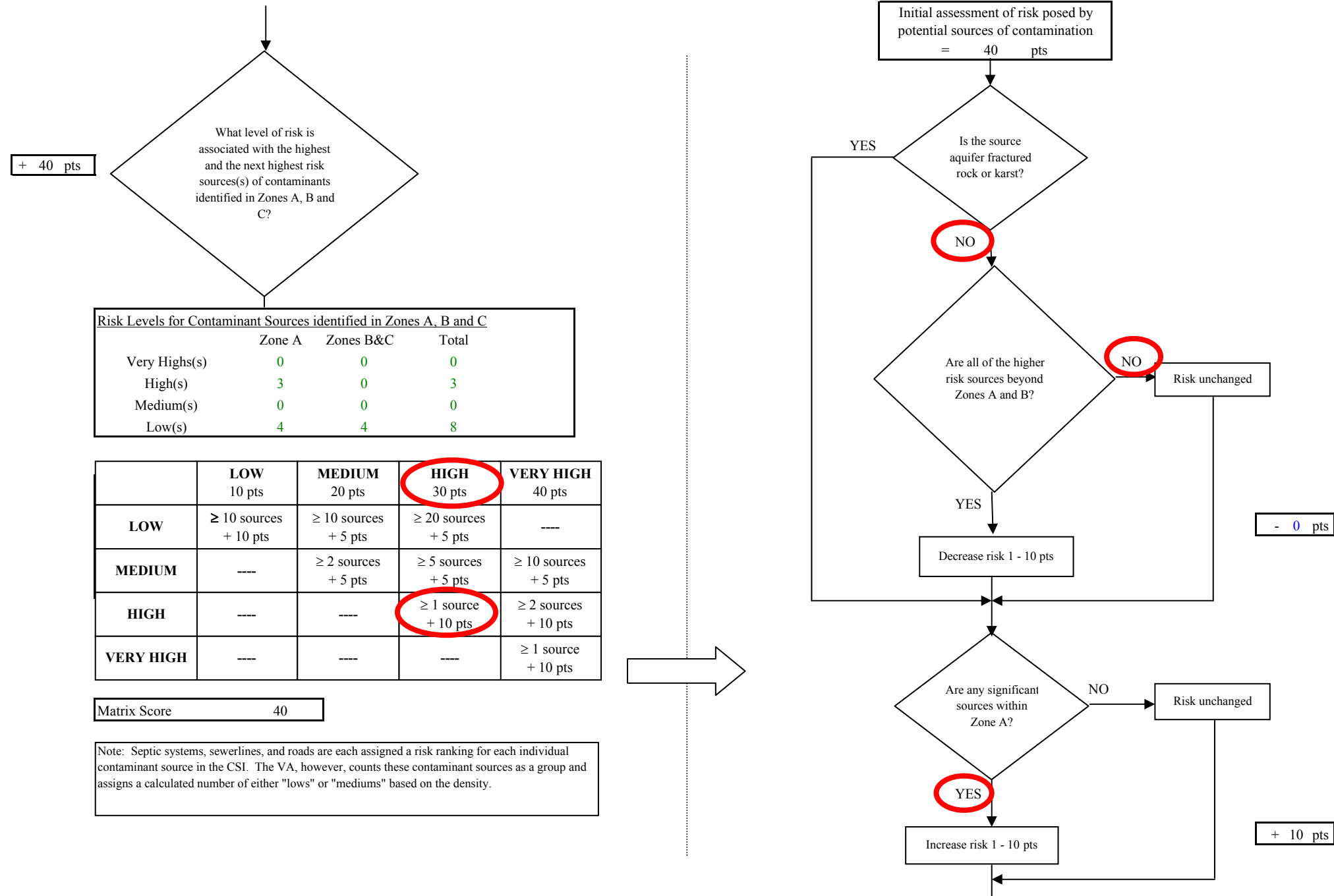


Chart 7. Contaminant risks for Nikiski High School PWSID 244484.001 - Volatile Organic Chemicals

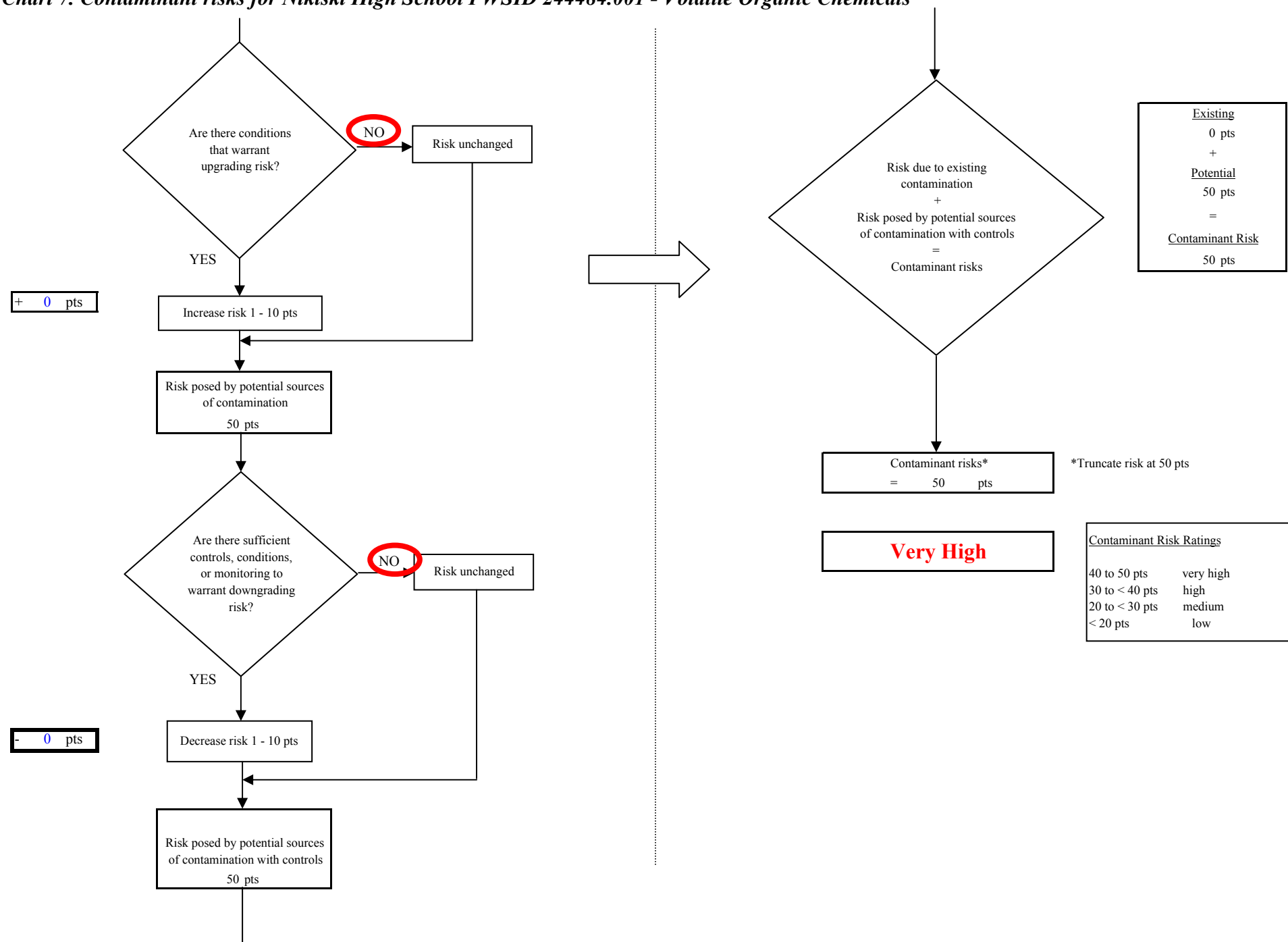


Chart 8. Vulnerability analysis for Nikiski High School PWSID 244484.001 - Volatile Organic Chemicals

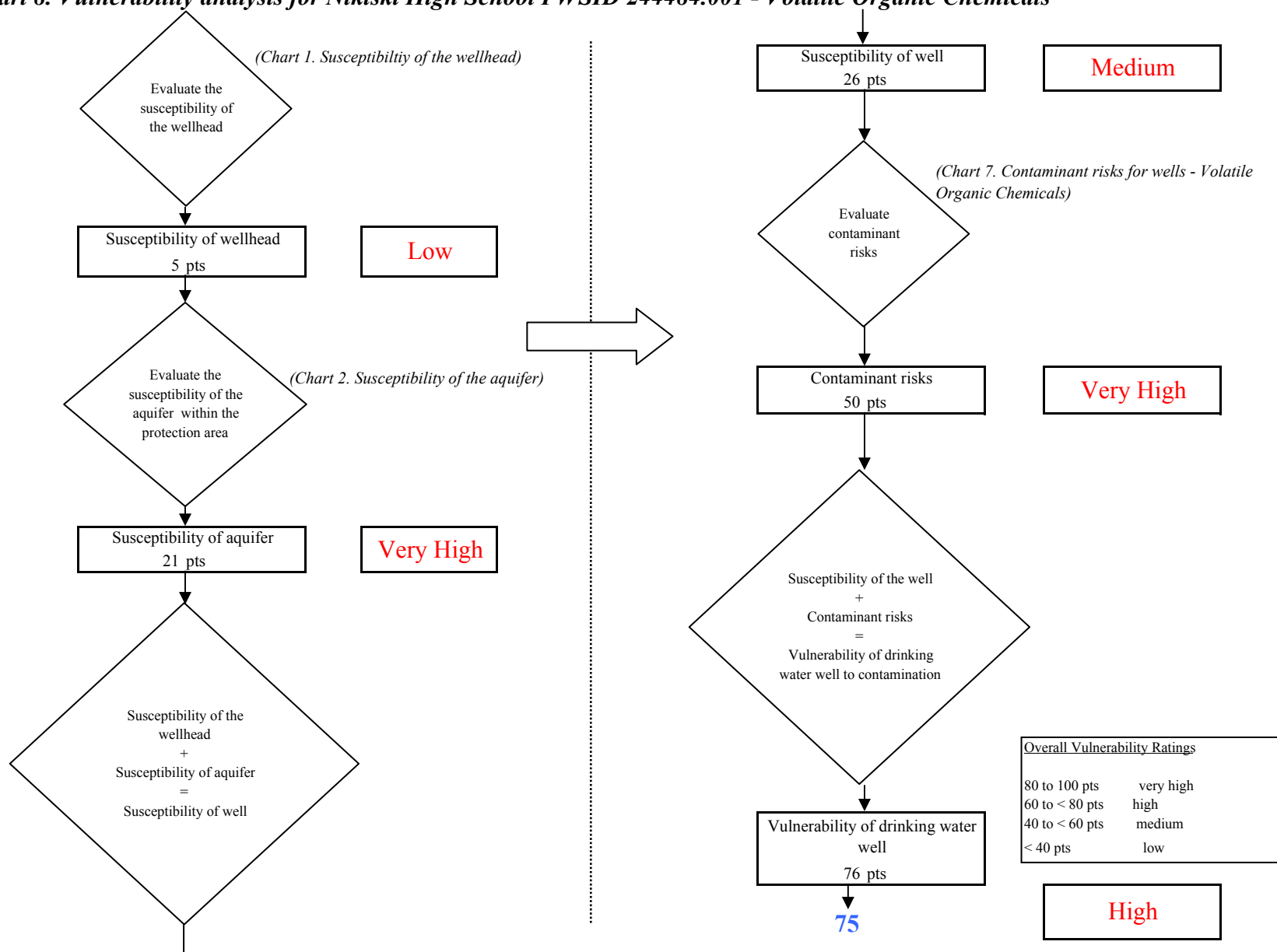


Chart 9. Contaminant risks for Nikiski High School PWSID 244484.001 - Heavy Metals, Cyanide and Other Inorganic Chemicals

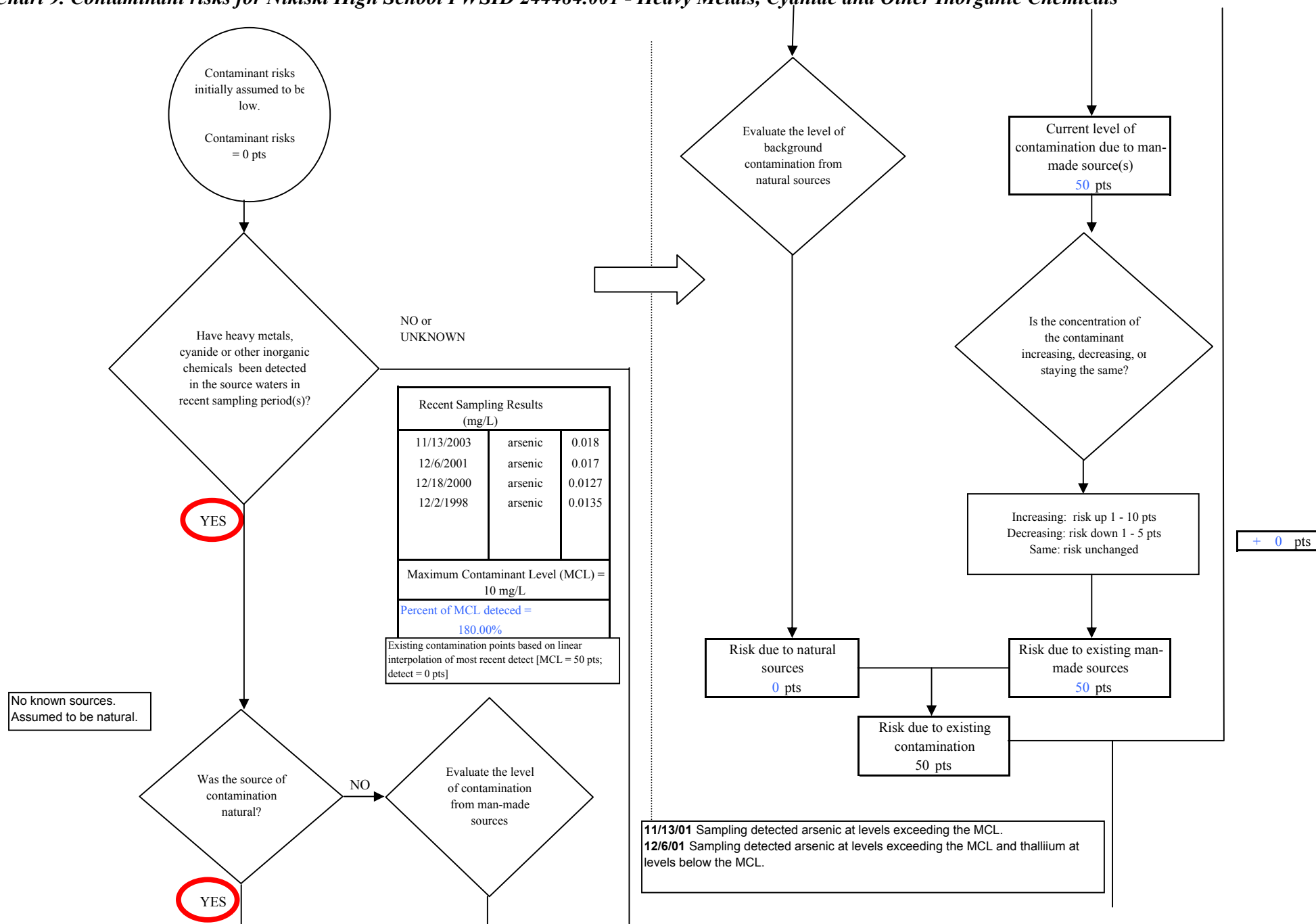


Chart 9. Contaminant risks for Nikiski High School PWSID 244484.001 - Heavy Metals, Cyanide and Other Inorganic Chemicals

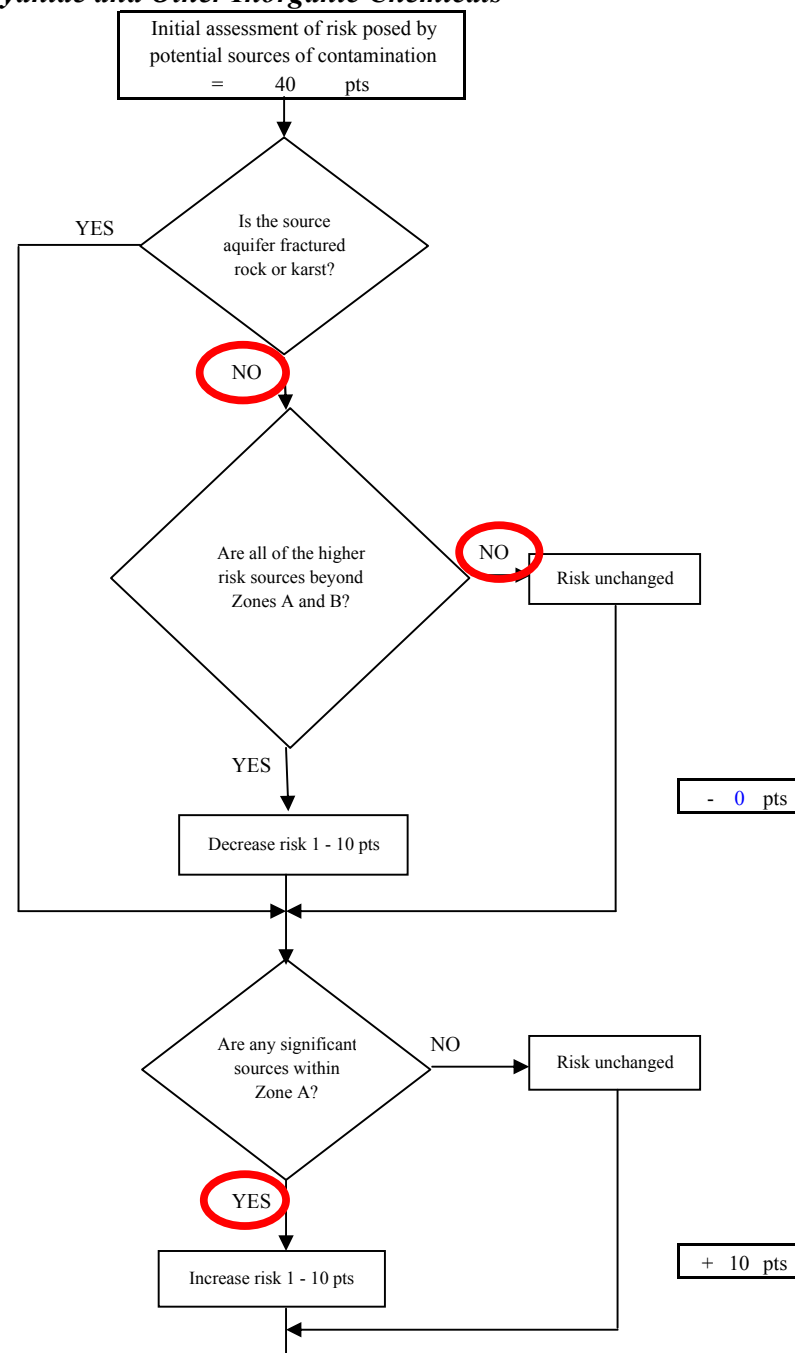
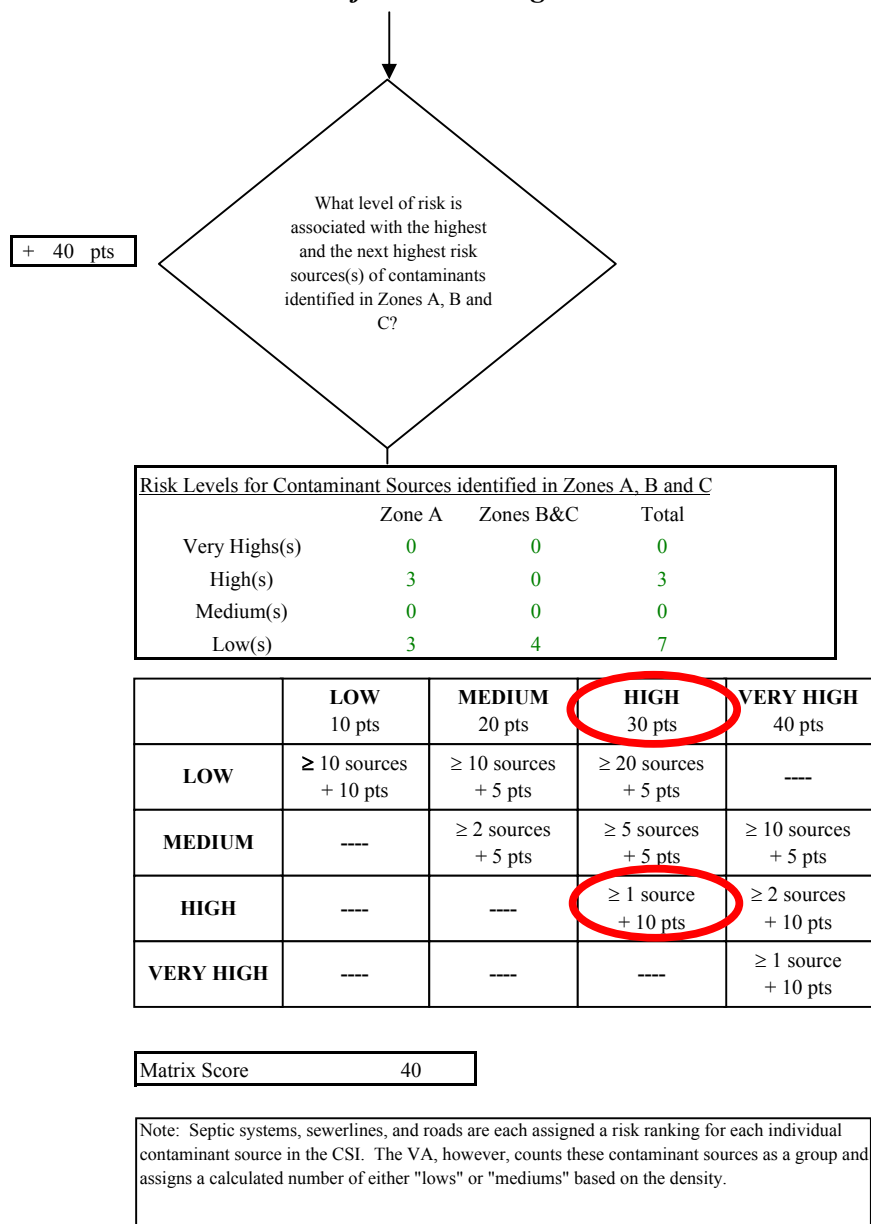


Chart 9. Contaminant risks for Nikiski High School PWSID 244484.001 - Heavy Metals, Cyanide and Other Inorganic Chemicals

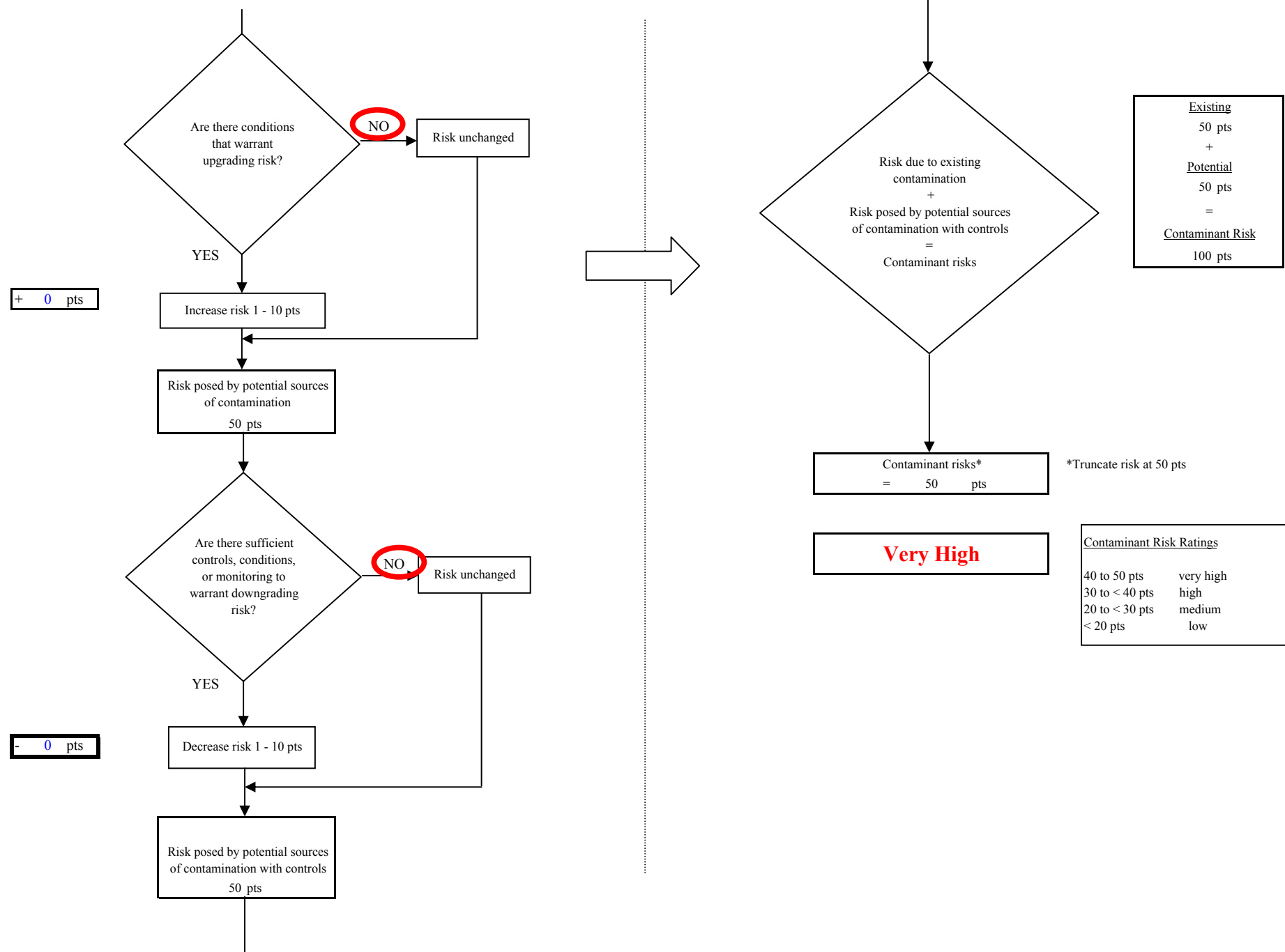


Chart 10. Vulnerability analysis for Nikiski High School PWSID 244484.001 - Heavy Metals, Cyanide and Other Inorganic Chemicals

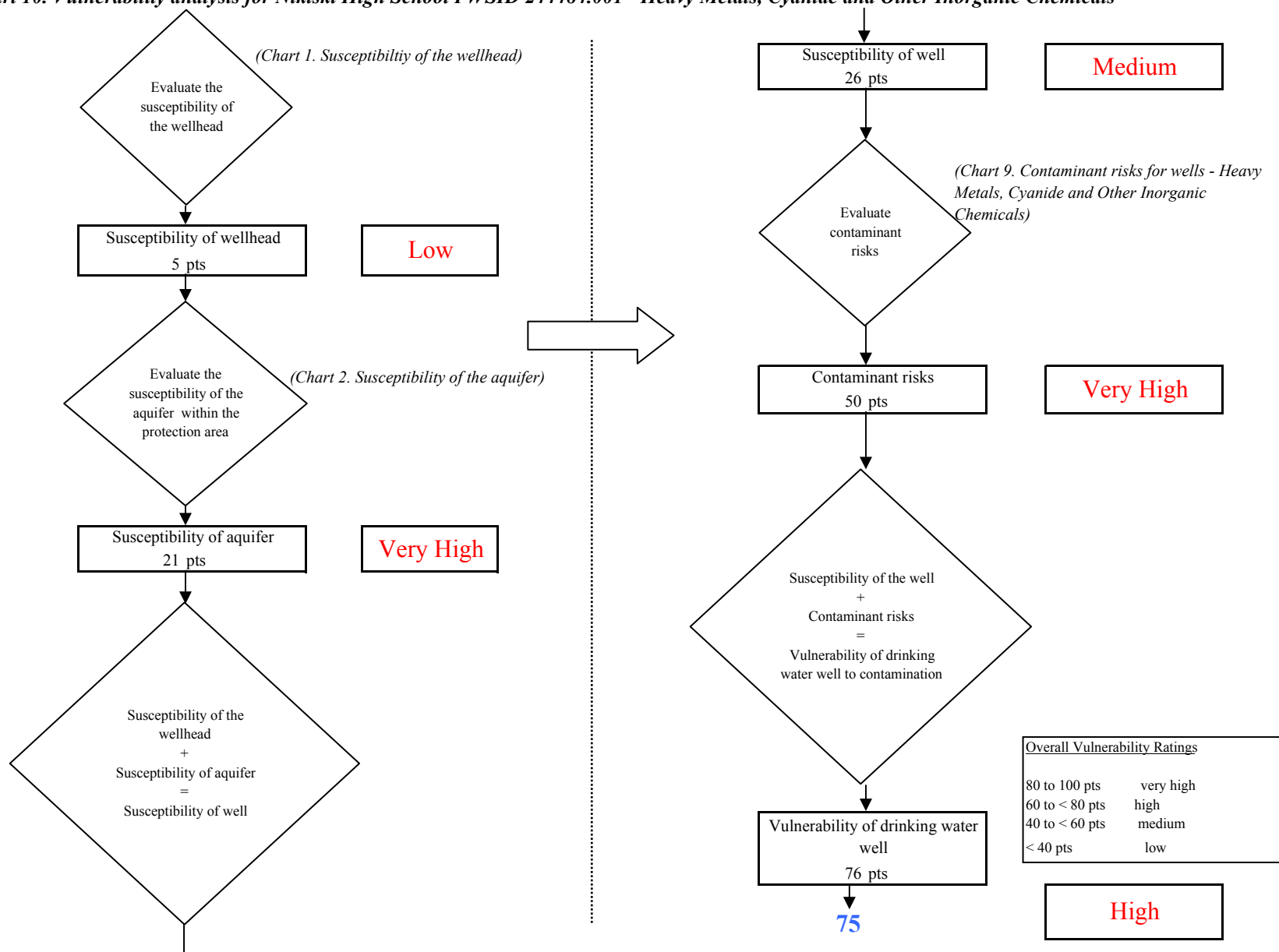


Chart 11. Contaminant risks for Nikiski High School PWSID 244484.001 - Synthetic Organic Chemicals

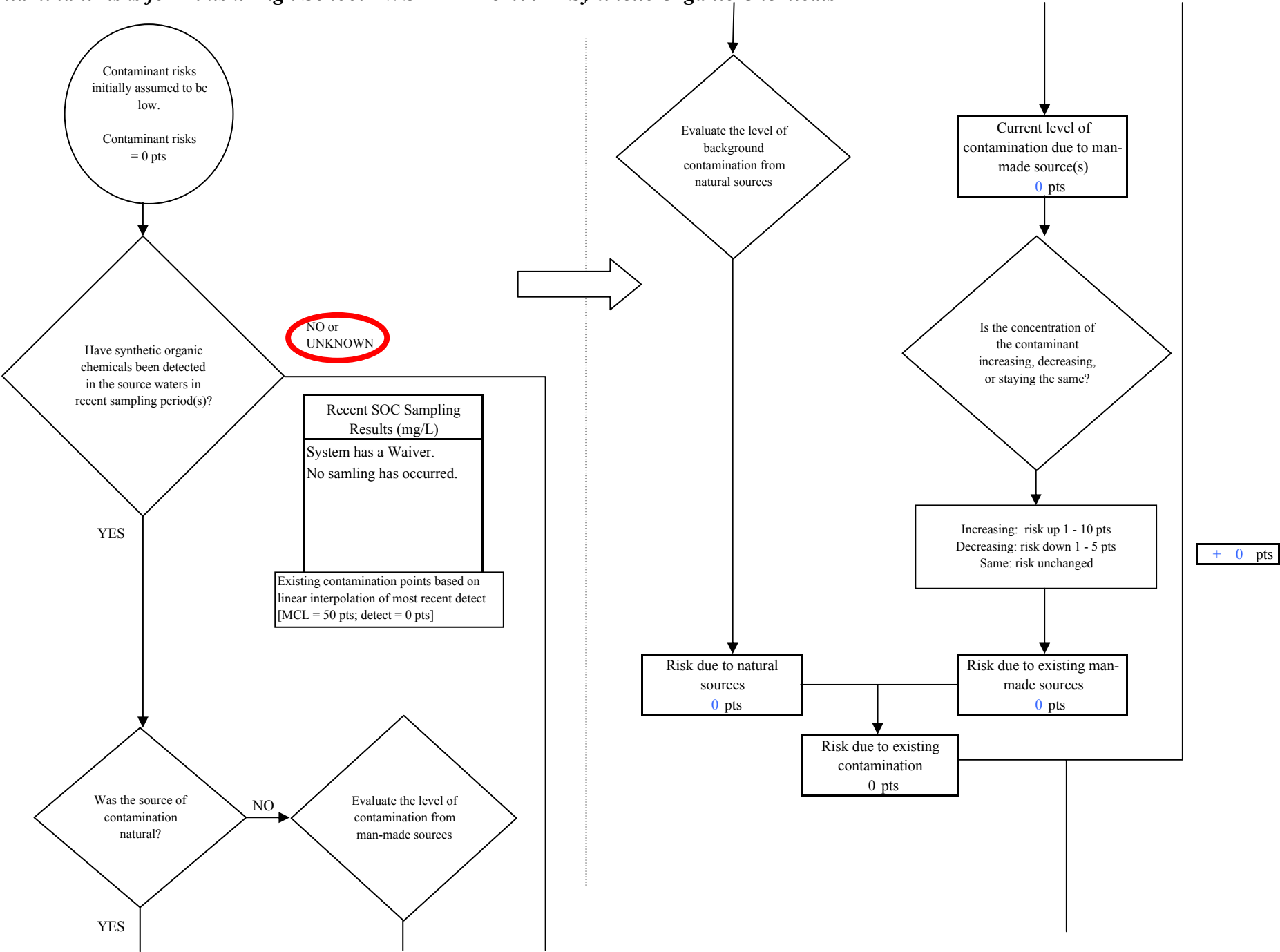


Chart 11. Contaminant risks for Nikiski High School PWSID 244484.001 - Synthetic Organic Chemicals

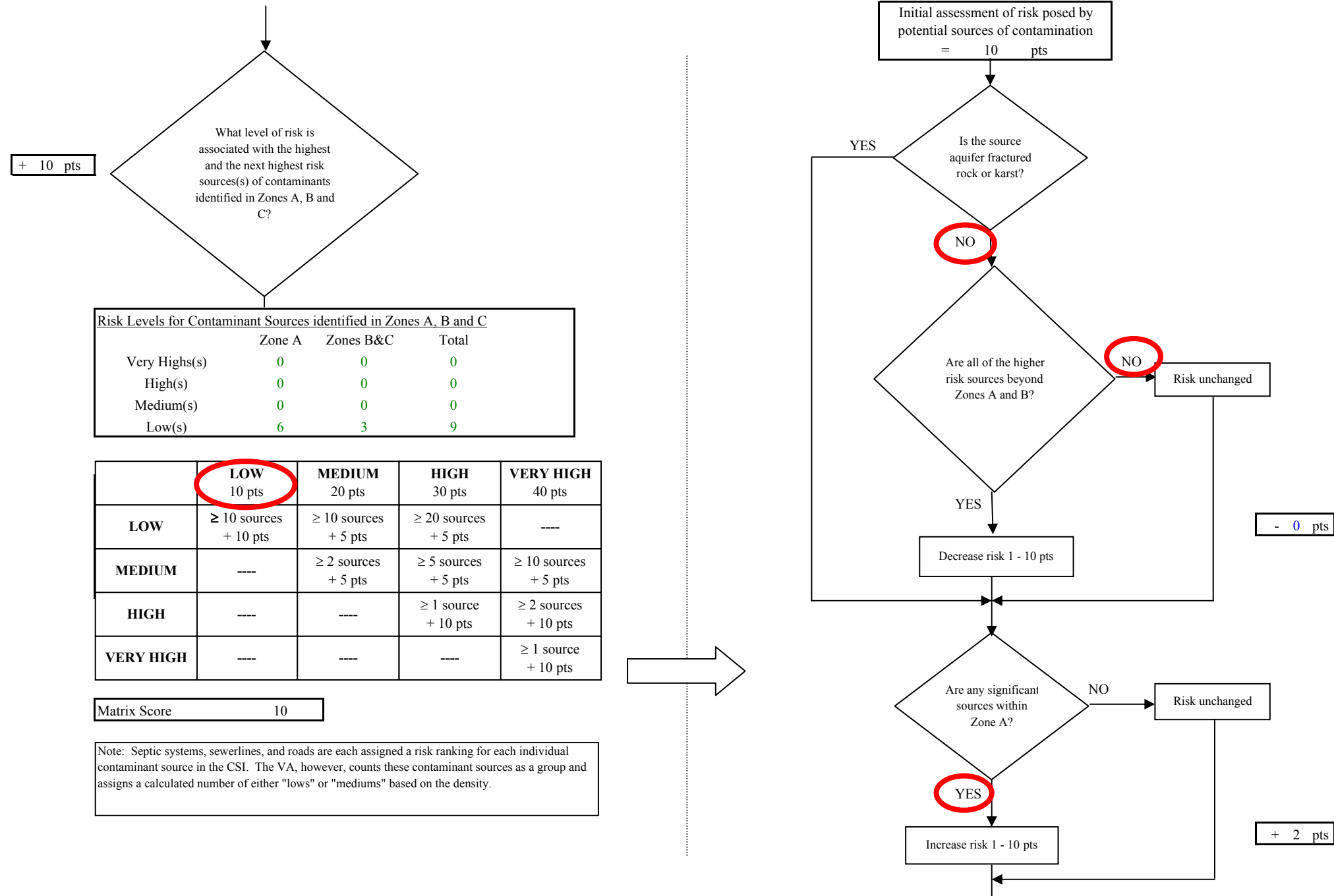


Chart 11. Contaminant risks for Nikiski High School PWSID 244484.001 - Synthetic Organic Chemicals

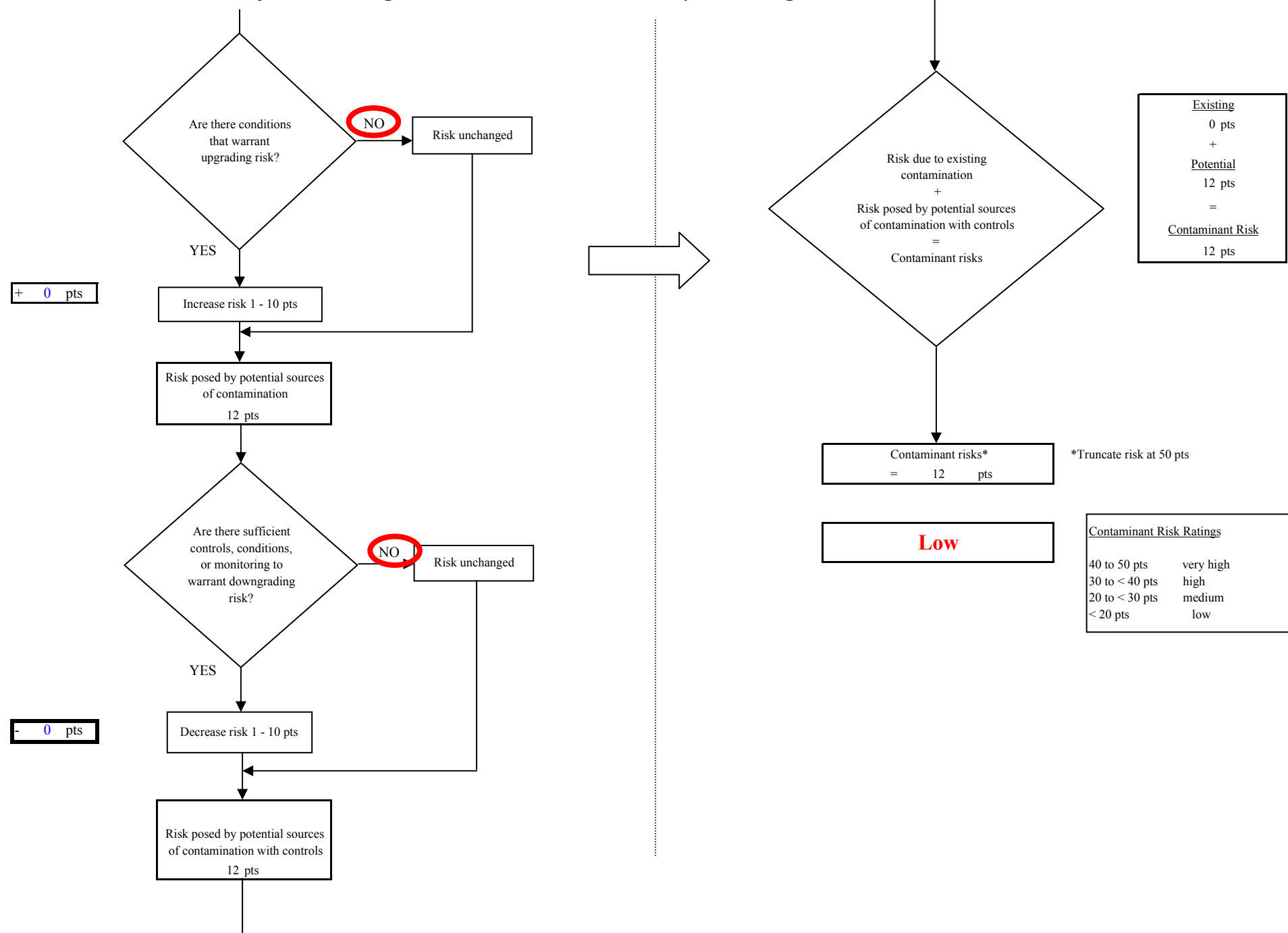
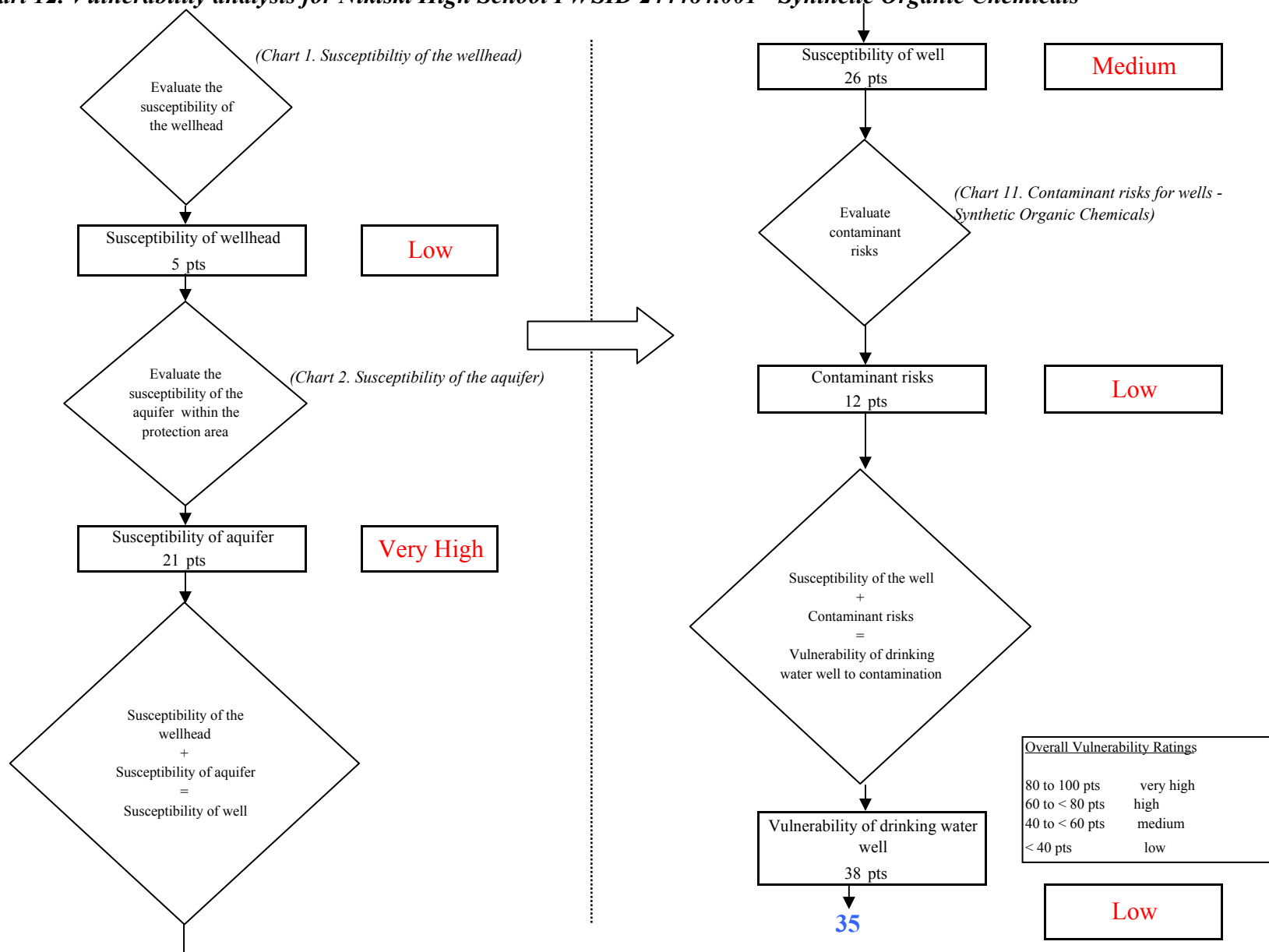


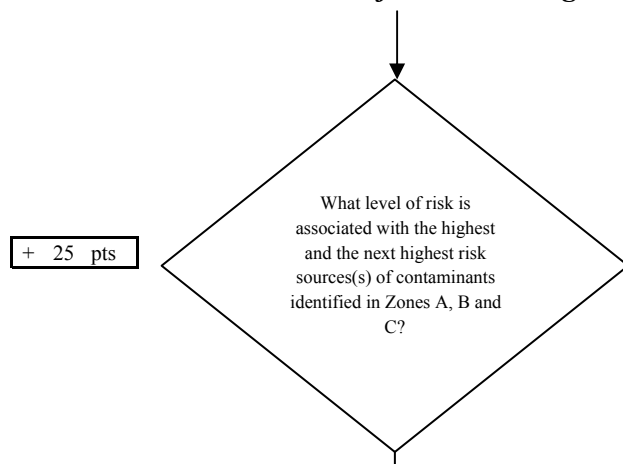
Chart 12. Vulnerability analysis for Nikiski High School PWSID 244484.001 - Synthetic Organic Chemicals



```

graph TD
    Start([Contaminant risks initially assumed to be low.  
Contaminant risks = 0 pts]) --> D1{Have other organic chemicals been detected  
in the source waters in recent sampling period(s)?}
    D1 -- YES --> Box1[Recent OOC Sampling Results (mg/L)  
System has a Waiver.  
No sampling has occurred.]
    Box1 --> Box2[Existing contamination points based on linear interpolation of most recent detect  
[MCL = 50 pts; detect = 0 pts]]
    D1 -- "NO or UNKNOWN" --> D2{Evaluate the level of background contamination from natural sources}
    D2 --> Box3[Risk due to natural sources  
0 pts]
    Box3 --> Box4[Risk due to existing contamination  
0 pts]
    D2 --> Box5[Current level of contamination due to man-made source(s)  
0 pts]
    Box5 --> D3{Is the concentration of the contaminant increasing, decreasing,  
or staying the same?}
    D3 -- "Increasing: risk up 1 - 10 pts  
Decreasing: risk down 1 - 5 pts  
Same: risk unchanged" --> Box6[Risk due to existing man-made sources  
0 pts]
    Box4 --> Box7[+ 0 pts]
    Box6 --> Box7
  
```

Chart 13. Contaminant risks for Nikiski High School PWSID 244484.001 - Other Organic Chemicals



| Risk Levels for Contaminant Sources identified in Zones A, B and C | | | |
|--|--------|-----------|-------|
| | Zone A | Zones B&C | Total |
| Very Highs(s) | 0 | 0 | 0 |
| High(s) | 0 | 0 | 0 |
| Medium(s) | 3 | 0 | 3 |
| Low(s) | 4 | 4 | 8 |

| | LOW 10 pts | MEDIUM 20 pts | HIGH 30 pts | VERY HIGH 40 pts |
|-----------|--------------------------|-------------------------|-------------------------|-------------------------|
| LOW | ≥ 10 sources + 10 pts | ≥ 10 sources + 5 pts | ≥ 20 sources + 5 pts | ---- |
| MEDIUM | ---- | ≥ 2 sources + 5 pts | ≥ 5 sources + 5 pts | ≥ 10 sources + 5 pts |
| HIGH | ---- | ---- | ≥ 1 source + 10 pts | ≥ 2 sources + 10 pts |
| VERY HIGH | ---- | ---- | ---- | ≥ 1 source + 10 pts |

Matrix Score 25

Note: Septic systems, sewerlines, and roads are each assigned a risk ranking for each individual contaminant source in the CSI. The VA, however, counts these contaminant sources as a group and assigns a calculated number of either "lows" or "mediums" based on the density.

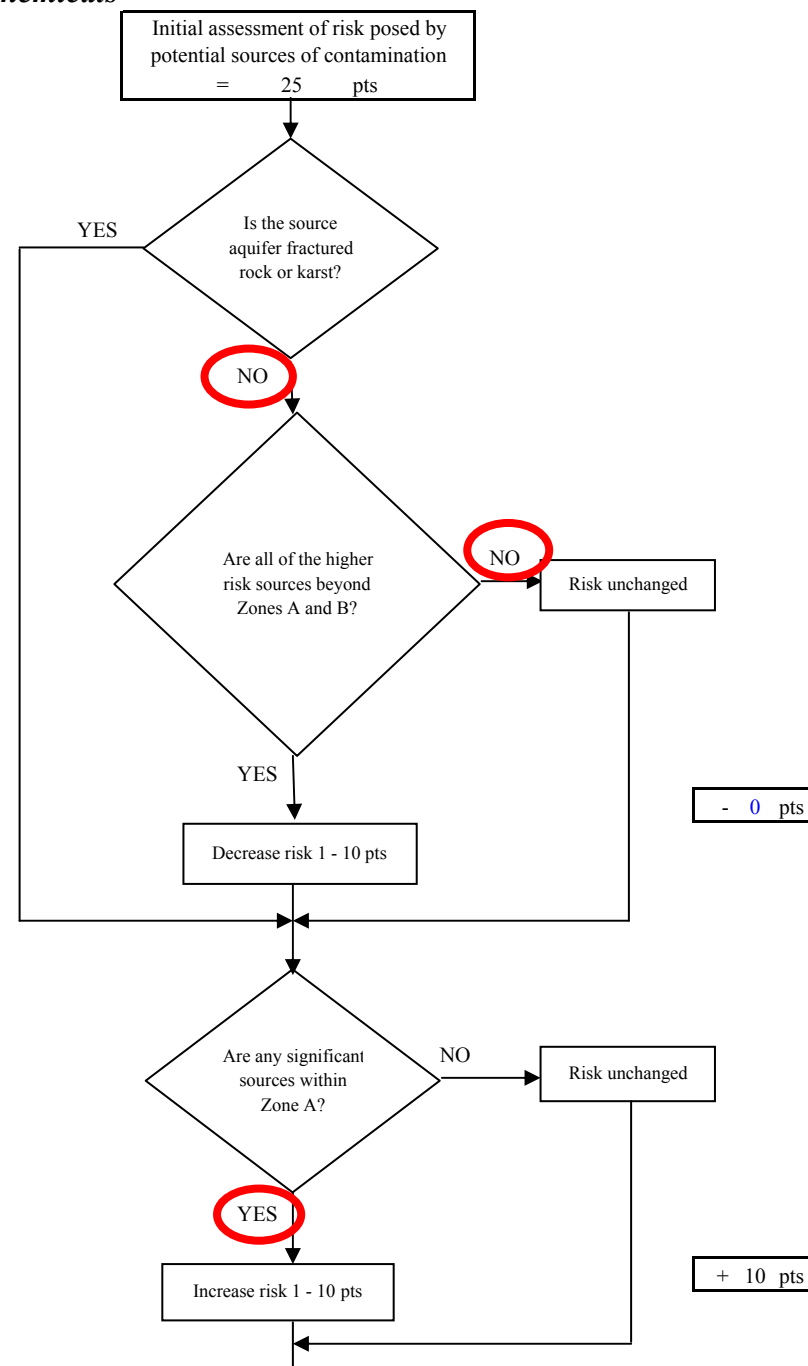
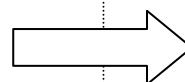


Chart 13. Contaminant risks for Nikiski High School PWSID 244484.001 - Other Organic Chemicals

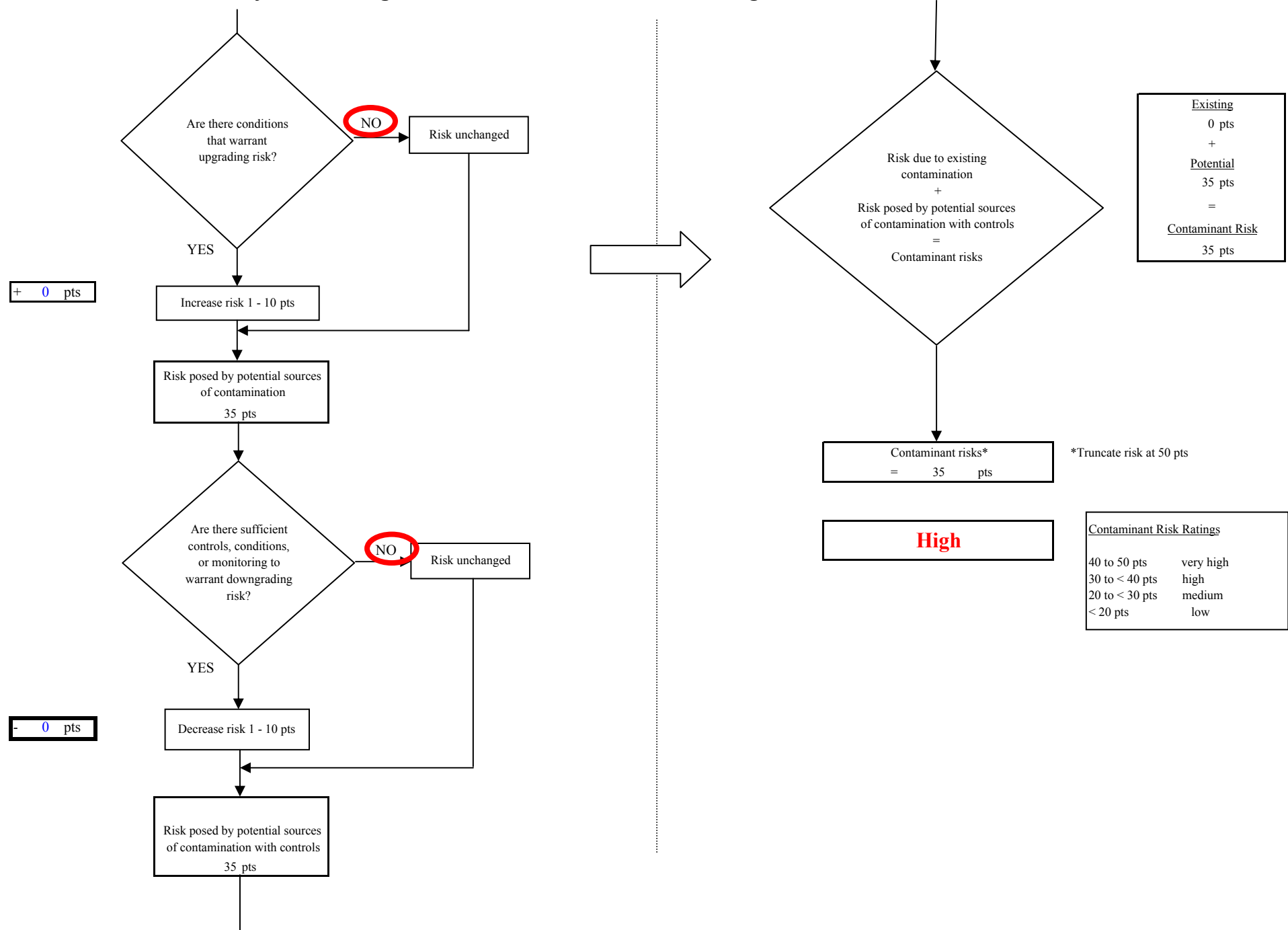


Chart 14. Vulnerability analysis for Nikiski High School PWSID 244484.001 - Other Organic Chemicals

