



Source Water Assessment

A Hydrogeologic Susceptibility and
Vulnerability Assessment for
USNPS Katmai King Salmon
Drinking Water System,
King Salmon, Alaska

PWSID # 260529.001
February 2004

DRINKING WATER PROTECTION PROGRAM REPORT 1157
Alaska Department of Environmental Conservation

Source Water Assessment for USNPS Katmai King Salmon Drinking Water System King Salmon, Alaska

PWSID # 260529.001

DRINKING WATER PROTECTION PROGRAM REPORT 1157

The Drinking Water Protection Program (DWPP) is producing Source Water Assessments in compliance with the Safe Drinking Water Act Amendments of 1996. Each assessment includes a delineation of the source water area, an inventory of potential and existing contaminant sources that may impact the water, a risk ranking for each of these contaminants, and an evaluation of the potential vulnerability of these drinking water sources.

These assessments are intended to provide public water systems owners/operators, communities, and local governments with the best available information that may be used to protect the quality of their drinking water. The assessments combine information obtained from various sources, including the U.S. Environmental Protection Agency, Alaska Department of Environmental Conservation (ADEC), public water system owners/operators, and other public information sources. The results of this assessment are subject to change if additional data becomes available. It is anticipated this assessment will be updated every five years to reflect any changes in the vulnerability and/or susceptibility of public drinking water source. If you have any additional information that may affect the results of this assessment, please contact the Program Coordinator of DWPP, (907) 269-7521.

CONTENTS

| | | | |
|-----------------------------------|---|-------------------------------------|---|
| EXECUTIVE SUMMARY | 1 | INVENTORY OF POTENTIAL AND EXISTING | |
| USNPS KATMAI KING SALMON PUBLIC | | CONTAMINANT SOURCES | 2 |
| DRINKING WATER SYSTEM | 1 | RANKING OF CONTAMINANT RISKS | 2 |
| USNPS KATMAI KING SALMON DRINKING | | VULNERABILITY OF USNPS KATMAI KING | |
| WATER PROTECTION AREA | 2 | SALMON DRINKING WATER SYSTEM | 3 |

TABLES

| | |
|--------------------------------------|---|
| Table 1. Definition of Zones | 2 |
| Table 2. Susceptibility | 3 |
| Table 3. Contaminant Risks | 4 |
| Table 4. Overall Vulnerability | 4 |

APPENDICES

| | |
|----------|---|
| APPENDIX | A. USNPS Katmai King Salmon Drinking Water Protection Area (Map A) |
| | B. Contaminant Source Inventory for USNPS Katmai King Salmon (Table 1) |
| | Contaminant Source Inventory and Risk Ranking for USNPS Katmai King Salmon – Bacteria and Viruses (Table 2) |
| | Contaminant Source Inventory and Risk Ranking for USNPS Katmai King Salmon – Nitrates/Nitrites (Table 3) |
| | Contaminant Source Inventory and Risk Ranking for USNPS Katmai King Salmon – Volatile Organic Chemicals (Table 4) |
| | C. USNPS Katmai King Salmon Drinking Water Protection Area and Potential and Existing Contaminant Sources (Map C) |
| | D. Vulnerability Analysis for Contaminant Source Inventory and Risk Ranking for USNPS Katmai King Salmon Public Drinking Water Source (Charts 1 – 8) |

Source Water Assessment for USNPS Katmai King Salmon Source of Public Drinking Water, King Salmon, Alaska

Drinking Water Protection Program Alaska Department of Environmental Conservation

EXECUTIVE SUMMARY

The United States National Parks Service (USNPS) Katmai King Salmon facility has one Public Water System (PWS) well. The well has been used as a drinking water source since it was drilled in 1962.

The well is a Class B (transient/non-community) water system located at Building 19, Park Service Road, in King Salmon, Alaska. Available records indicate that there are two water storage tanks, with a combined capacity of 12,000-gallons, and that the drinking water source is treated with calcium hypochlorite. This system operates year-round and serves approximately 10 residents and 30 non-residents through eight service connections. The wellhead received a susceptibility rating of **Low** and the aquifer received a susceptibility rating of **Medium**. Combining these two ratings produce a **Low** rating for the natural susceptibility of the well.

Identified potential and current sources of contaminants for the public drinking water source include: motor/motor vehicle repair shops, a laundromat/washeteria, large capacity septic systems, underground fuel tanks, a water supply well, aboveground fuel tanks, roads, airports, an Alaska Department of Environmental Conservation (ADEC) recognized contaminated site, and a leaking underground storage tank (LUST) site. These identified potential and existing sources of contamination are considered as sources of bacteria and viruses, nitrates and/or nitrites, and volatile organic chemicals. Overall, the water well received a vulnerability rating of **High** for the bacteria and viruses, nitrates and nitrites, and volatile organic chemicals contaminant categories.

USNPS KATMAI KING SALMON PUBLIC DRINKING WATER SYSTEM

The USNPS Katmai King Salmon well is a Class B (transient/non-community) public water system. The facility is located at Building 19, Park Service Road, in King Salmon, Alaska (Sec. 26, T17S, R45W, Seward Meridian; see Map A of Appendix A). King

Salmon is located on the north bank of the Naknek River near Bristol Bay. The village is located about 15 miles upriver from Naknek and 280 miles southwest of Anchorage. The community has a population of 392 (ADCED, 2003). Average annual precipitation in King Salmon is 20 inches, including approximately 45 inches of snowfall. Temperatures range from 42 to 63°F in summer and 29 to 44°F in winter. Temperatures can be as extreme as -46 to 88°F.

The community of King Salmon obtains most of their water supply from individual wells. Most households are served by the piped sewage collection system and the remaining households have individual septic tanks (ADCED, 2003). King Salmon receives electrical power from the Naknek Electric Association operated by the REA Cooperative. Power generating facilities are fueled by diesel. Refuse is collected by the Peterson Sanitation Company and trucked to the landfill located at mile five of King Salmon-Naknek Road (ADCED, 2003).

According to information supplied by ADEC for the USNPS Katmai King Salmon PWS, the depth of the primary water well is approximately 97 feet below the ground surface. Well construction details are unknown; however, based on surrounding wells, it is assumed the well is screened in a confined aquifer. Confined aquifers are likely less susceptible to groundwater impacts resulting from the downward migration of surface contaminants. The well is not located within a floodplain.

Information acquired from a December 1999 sanitary survey for the public water system indicated that the land surface was sloped away from the well. Generally, land surfaces that slope away from the wellhead promote surface water drainage, which reduces potential of contaminant migration down the well casing annulus. The well is grouted according to ADEC regulations. Proper grouting provides added protection against contaminants traveling along the well casing annulus and into source waters.

The entire Bristol Bay area was formerly covered by glaciers and the topography is representative of a

postglacial area. Generally, the soils consist of silty sand overlying relatively clean sand. The silty soils are slightly frost-susceptible. Isolated pockets of permafrost are scattered throughout the area (DOWL, 1982).

USNPS KATMAI KING SALMON DRINKING WATER PROTECTION AREA

In order to evaluate whether a drinking water source is at risk, we must first evaluate what are the most likely pathways for surface contamination to reach the groundwater. These areas are determined by looking at the characteristics of the soil, groundwater, aquifer, and well.

The most probable area for contamination to reach the drinking water well is the area that contributes water to the well, the groundwater recharge area. This area is designated as the drinking water protection area (DWPA). Because releases of contaminants within the protection area are most likely to impact the drinking water well, this area will serve as the focus for voluntary protection efforts. An analytical calculation was used to determine the size and shape of the DWPA for the USNPS Katmai King Salmon PWS. The input parameters describing the attributes of the aquifer in this calculation were adopted from Groundwater (Freeze and Cherry, 1979). Available geology and groundwater contours were also considered to take into account any uncertainties in groundwater flow and aquifer characteristics to arrive at a meaningful protection area.

The protection areas established for wells by the ADEC are usually separated into four zones, limited by the watershed. These zones correspond to differences in the time-of-travel (TOT) of the water moving through the aquifer to the well (Please refer to the Guidance Manual for Class B Public Water Systems for additional information).

The time of travel for contaminants within the water varies and is dependent on the physical and chemical characteristics of each contaminant. The following is a summary of the four protection area zones for wells and the calculated time -of-travel for each:

Table 1. Definition of Zones

| Zone | Definition |
|------|--|
| A | ¼ the distance for the 2-yr. time -of-travel |
| B | Less than the 2 year time-of-travel |
| C | Less than the 5 year time-of-travel |
| D | Less than the 10 year time -of-travel |

The DWPA for the USNPS Katmai King Salmon PWS was determined using an analytical calculation and includes Zones A, B, C, and D (See Map A of Appendix A).

INVENTORY OF POTENTIAL AND EXISTING CONTAMINANT SOURCES

The Drinking Water Protection Program has completed an inventory of potential and existing sources of contamination within the USNPS Katmai King Salmon DWPA. This inventory was completed through a search of agency records and other publicly available information. Potential sources of contamination to the drinking water aquifer include a wide range of categories and types. Potential drinking water contaminants are found within agricultural, residential, commercial, and industrial areas, but can also occur within areas that have little or no development.

For the basis of all Class B public water system assessments, three categories of drinking water contaminants were inventoried. They include:

- Bacteria and viruses,
- Nitrates and/or nitrites,
- Volatile organic chemicals.

The sources are displayed on Map C of Appendix C and summarized in Table 1 of Appendix B.

RANKING OF CONTAMINANT RISKS

Once the potential and existing sources of contamination have been identified, they are assigned a ranking according to what type and level of risk they represent. Ranking of contaminant risks for a “potential” or “existing” source of contamination is a function of toxicity and volumes of specific contaminants associated with that source. Rankings include:

- Low,
- Medium,
- High, and
- Very High.

The time-of-travel for contaminants within the water varies and is dependent on the physical and chemical characteristics of each contaminant. Bacteria and Viruses are only inventoried in Zones A and B because of their short life span. Only “Very High” and “High” rankings are inventoried within the outer Zone D due to the probability of contaminant dilution by the time the contaminants get to the well.

Tables 2 through 4 in Appendix B contain the ranking of potential and existing sources of contamination with respect to bacteria and viruses, nitrates and/or nitrites, and volatile organic chemicals.

VULNERABILITY OF THE USNPS KATMAI KING SALMON DRINKING WATER SYSTEM

Vulnerability of a drinking water source to contamination is a combination of two factors:

- Natural susceptibility, and
- Contaminant risks.

Appendix D contains eight charts, which together form the ‘Vulnerability Analysis’ for a source water assessment for a public drinking water source. Chart 1 analyzes the ‘Susceptibility of the Wellhead’ to contamination by looking at the construction of the well and its surrounding area. Chart 2 analyzes the ‘Susceptibility of the Aquifer’ to contamination by looking at the naturally occurring attributes of the water source and influences on the groundwater system that might lead to contamination. Chart 3 analyzes ‘Contaminant Risks’ for the drinking water source with respect to bacteria and viruses. The ‘Contaminant Risks’ portion of the analysis considers potential sources of contaminants as well as a review of contamination that has or may have occurred, but has not arrived or been detected at the well. Lastly, Chart 4 contains the ‘Vulnerability Analysis for Bacteria and Viruses’. Charts 5 through 8 contain the Contaminant Risks and Vulnerability Analyses for nitrates and nitrites and volatile organic chemicals, respectively.

A score for the Natural Susceptibility is reached by considering the properties of the well and the aquifer.

$$\begin{array}{r}
 \text{Susceptibility of the Wellhead (0 – 25 Points)} \\
 \text{(Chart 1 of Appendix D)} \\
 + \\
 \text{Susceptibility of the Aquifer (0 – 25 Points)} \\
 \text{(Chart 2 of Appendix D)} \\
 = \\
 \text{Natural Susceptibility (Susceptibility of the Well)} \\
 \text{(0 – 50 Points)}
 \end{array}$$

A ranking is assigned for the Natural Susceptibility according to the point score:

| Natural Susceptibility Ratings | |
|--------------------------------|-----------|
| 40 to 50 pts | Very High |
| 30 to < 40 pts | High |
| 20 to < 30 pts | Medium |
| < 20 pts | Low |

The USNPS Katmai King Salmon’s water well is in a confined aquifer. Confined aquifers are less susceptible to potential groundwater quality impacts posed by the migration of surface water contaminants downward from the surface. Table 2 shows the susceptibility scores and ratings for this PWS.

Table 2. Susceptibility

| | Score | Rating |
|--------------------------------|-------|--------|
| Susceptibility of the Wellhead | 0 | Low |
| Susceptibility of the Aquifer | 13 | Medium |
| Natural Susceptibility | 13 | Low |

Contaminant risks to a drinking water source depend on the type, number or density, and distribution of contaminant sources. This score has been derived from an examination of existing and historical contamination that has been detected at the drinking water source through routine sampling. It also evaluates potential sources of contamination. Flow charts are used to assign a point score, and ratings are assigned in the same way as for the natural susceptibility:

| Contaminant Risk Ratings | |
|--------------------------|-----------|
| 40 to 50 pts | Very High |
| 30 to < 40 pts | High |
| 20 to < 30 pts | Medium |
| < 20 pts | Low |

Table 3 summarizes the Contaminant Risks for each category of drinking water contaminants.

Table 3. Contaminant Risks

| Category | Score | Rating |
|----------------------------|-------|-----------|
| Bacteria and Viruses | 50 | Very High |
| Nitrates and/or Nitrites | 50 | Very High |
| Volatile Organic Chemicals | 50 | Very High |

Finally, an overall vulnerability score is assigned for each water system by combining each of the contaminant risk scores with the natural susceptibility score:

$$\begin{array}{c}
 \text{Natural Susceptibility (0 – 50 points)} \\
 + \\
 \text{Contaminant Risks (0 – 50 points)} \\
 = \\
 \text{Vulnerability of the} \\
 \text{Drinking Water Source to Contamination (0 – 100).}
 \end{array}$$

Again, rankings are assigned according to a point score:

| Overall Vulnerability Ratings | |
|-------------------------------|-----------|
| 80 to 100 pts | Very High |
| 60 to < 80 pts | High |
| 40 to < 60 pts | Medium |
| < 40 pts | Low |

Table 4 contains the overall vulnerability scores (0 – 100) and ratings for each of the three categories of drinking water contaminants. Note: scores are rounded off to the nearest five.

Table 4. Overall Vulnerability

| Category | Score | Rating |
|----------------------------|-------|--------|
| Bacteria and Viruses | 65 | High |
| Nitrates and Nitrites | 65 | High |
| Volatile Organic Chemicals | 65 | High |

Bacteria and Viruses

The contaminant risk for bacteria and viruses is **Very High**. The risk is primarily attributed to the presence of large capacity septic systems in Zones A and B (see Table 2 – Appendix B).

No positive bacteria counts have been reported in recent (within five years) sampling events (See Chart 3 – Contaminant Risks for Bacteria and Viruses in Appendix D). Only a small amount of bacteria and viruses are required to endanger public health.

After combining the contaminant risk for bacteria and viruses with the natural susceptibility of the well, the overall vulnerability of the well to contamination is **High**.

Nitrates and Nitrites

The contaminant risk for nitrates and nitrites is **Very High**. The risk to this source of public drinking water is primarily attributed to the presence of large capacity septic systems in Zones A and B (see Table 3 – Appendix B).

Nitrates are very mobile, moving at approximately the same rate as water. The sampling history for this well indicates that low levels of nitrates have been detected in recent sampling events. However, the reported concentrations of nitrates do not exceed the maximum contaminant level (MCL) of 10 mg/L. Nitrate concentrations in uncontaminated groundwater are typically less than 2 mg/L; therefore, nitrate concentrations above 2 mg/L may be indicative of man-made sources (See Chart 5 - Contaminant Risks for Nitrates and/or Nitrites in Appendix D).

Nitrate levels are often derived from the decomposition of organic matter in soils. Although the nitrate source is unknown, such occurrences may be attributed to septic systems or other sources. After combining the contaminant risk for nitrates and nitrites with the natural susceptibility of the well, the overall vulnerability of the well to nitrate and nitrite contamination is **High**.

Volatile Organic Chemicals

The contaminant risk for volatile organic chemicals is **Very High**. The risk is primarily attributed to the presence of a laundromat/washeteria, underground fuel tanks, airports, an ADEC recognized contaminated site, and a leaking underground storage tank (LUST) located in Zones A and B. Numerous other potential contaminant sources are also found within the protection area (see Table 4 – Appendix B).

No recent sampling data was available in ADEC records for USNPS Katmai King Salmon (See Chart 7 – Contaminant Risks for Volatile Organic Chemicals in Appendix D).

After combining the contaminant risk for volatile organic chemicals with the natural susceptibility of the well, the overall vulnerability of the well to contamination is **High**.

Using the Source Water Assessment

This assessment of contaminant risks can be used as a foundation for local voluntary protection efforts as well as a basis for the continuous efforts on the part of the USNPS Katmai King Salmon and the community of King Salmon to protect public health. It is anticipated that Source Water Assessments will be updated every five years to reflect any changes in the vulnerability and/or susceptibility of the drinking water source.

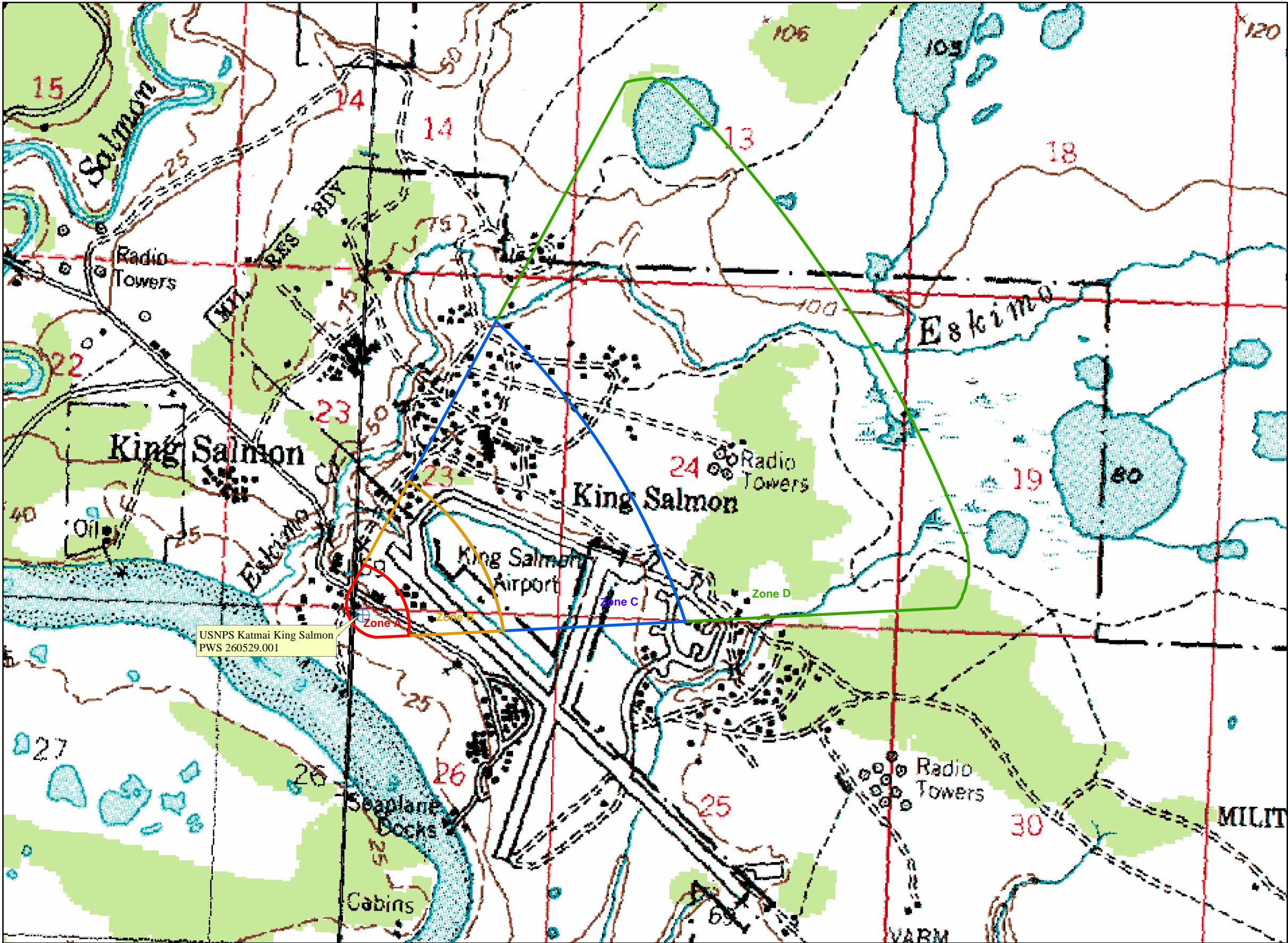
REFERENCES

- Alaska Department of Community and Economic Development (ADCED), 2003 [WWW document]. URL: http://www.dced.state.ak.us/cbd/commdb/CF_COMDB.htm
- Alaska Department of Environmental Conservation, Contaminated Sites Database, 2003 [WWW database], URL http://www.state.ak.us/dec/dspar/csites/cs_search.htm
- Alaska Department of Environmental Conservation, Leaking Underground Storage Tank Database, 2003 [WWW database], URL http://www.dec.state.ak.us/spar/stp/ust/search/fac_search.asp
- DOWL Engineers (DOWL), 1982, Upper Bristol Bay Region Community Planning Profiles.
- Freeze, R. A., and Cherry, J.A. 1979, Groundwater, Prentice-Hall, Englewood Cliffs, New Jersey
- United States Environmental Protection Agency (EPA), 2002 [WWW document]. URL <http://www.epa.gov/safewater/mcl.html>.

APPENDIX A

Drinking Water Protection Area Location Map (Map A)

Public Water Well System for PWS #260529.001 USNPS Katmai King Salmon



LEGEND

Public Water System Well

Hydrography/Physical

Parcels
Stream
Lake or Pond
Contours

Transportation

Primary Route (Class 1)
Secondary Route (Class 2)
Road (Class 3)
Road (Class 4)
Road (Class 5, Four-wheel drive)

Groundwater Protection Zones

Zone A Protection Area- Several Months Travel Time
Zone B Protection Area- 2 Years Travel Time
Zone C Protection Area- 5 Years Travel Time
Zone D Protection Area- 10 Years Travel Time

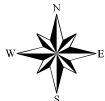
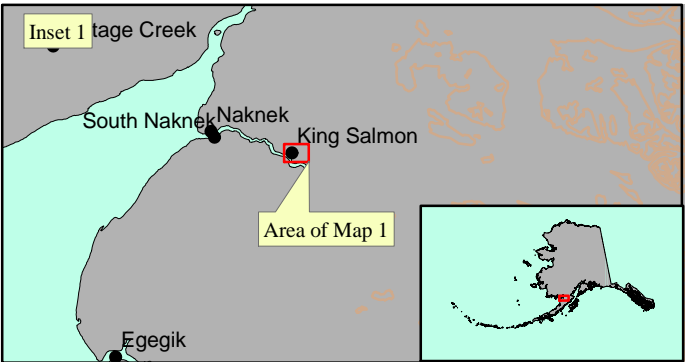
Data Sources:
Contaminant Sources, Public Water System Wells, Contours
Alaska Department of Environmental Conservation (ADEC)

Critical Facilities, Federal Emergency Management Agency (FEMA)

All other data:
United States Geological Survey (USGS)

Drinking Water Protection Areas based on "Alaska Drinking Water Protection Program - Guidance Manual for Class B Public Water Systems" published by ADEC

URS Corporation does not guarantee the accuracy or validity of the data provided.



0 0.25 0.5 1 1.5 2 Miles

USNPS Katmai King Salmon
PWS 260529.001

Appendix A Map A

APPENDIX B

Contaminant Source Inventory and Risk Rankings (Tables 1-4)

Table 1

**Contaminant Source Inventory for
USNPS Katmai King Salmon**

PWSID 260529.001

| Contaminant Source Type | Contaminant Source ID | CS ID tag | Zone | Map Number | Comments |
|---|------------------------------|------------------|-------------|-------------------|--|
| Laundromats without dry cleaning | C22 | C22-01 | A | C | |
| Motor /motor vehicle repair shops | C31 | C31-01 | A | C | |
| Injection wells (Class V) Large-Capacity Septic System (Drainfield Disposal Method) | D10 | D10-02 | A | C | Assume facility not connected to municipal sewage |
| Tanks, diesel (underground) | T08 | T08-05 | A | C | Assume at least 1 diesel tank utilized for facility operations |
| Tanks, gasoline (underground) | T12 | T12-04 | A | C | Assume at least 1 gasoline tank utilized for facility operations |
| Tanks, heating oil, nonresidential (aboveground) | T14 | T14-01 | A | C | Assume heating oil used for facility operations. |
| Airports | X14 | X14-01 | A | C | King Salmon Airport |
| Highways and roads, dirt/gravel | X24 | X24-01 | A | C | Assume 1-20 roads in Zone A |
| Injection wells (Class V) Large-Capacity Septic System (Drainfield Disposal Method) | D10 | D10-01 | B | C | FAA King Salmon |
| Tanks, heating oil, residential (above ground) | R08 | R08-01 | B | C | Assume 10 or less residential heating oil tanks in Zone B |
| Tanks, diesel (underground) | T08 | T08-01 | B | C | FAA King Salmon, Diesel |
| Tanks, diesel (underground) | T08 | T08-02 | B | C | FAA King Salmon, Diesel |
| Tanks, diesel (underground) | T08 | T08-03 | B | C | FAA King Salmon, Diesel |
| Tanks, diesel (underground) | T08 | T08-04 | B | C | FAA King Salmon, Diesel |
| Tanks, gasoline (underground) | T12 | T12-01 | B | C | FAA King Salmon, Gasoline |
| Tanks, gasoline (underground) | T12 | T12-02 | B | C | FAA King Salmon, Gasoline |
| Tanks, gasoline (underground) | T12 | T12-03 | B | C | FAA King Salmon, Gasoline |
| Contaminated sites, DEC recognized, non-Superfund, non-RCRA | U04 | U04-02 | B | C | King Salmon AS OT028 GW Zone 2, RecKey #199625X928902, Status: Active, diesel, gasoline, BTEX, and TCE groundwater plumes in the A-aquifer. |
| Open Leaking Underground Fuel Storage Tank (LUST) Sites | U07 | U07-01 | B | C | FAA King Salmon, RecKey #1993250022551, Event ID 708, Facility ID 1107, releases of gasoline and diesel fuel were reported following a site assessment for the removal of 6 tanks. |
| Airports | X14 | X14-01 | B | C | King Salmon Airport |
| Highways and roads, dirt/gravel | X24 | X24-02 | B | C | Assume 1-20 roads in Zone B |

| <i>Contaminant Source Type</i> | <i>Contaminant Source ID</i> | <i>CS ID tag</i> | <i>Zone</i> | <i>Map Number</i> | <i>Comments</i> |
|---------------------------------|------------------------------|------------------|-------------|-------------------|-------------------------------|
| Water supply wells | W09 | W09-01 | C | C | 1 water supply well in Zone C |
| Highways and roads, dirt/gravel | X24 | X24-03 | C | C | Assume 1-20 roads in Zone C |

Table 2

*Contaminant Source Inventory and Risk Ranking for
USNPS Katmai King Salmon
Sources of Bacteria and Viruses*

PWSID 260529.001

| <i>Contaminant Source Type</i> | <i>Contaminant Source ID</i> | <i>CS ID tag</i> | <i>Zone</i> | <i>Risk Ranking for Analysis</i> | <i>Map Number</i> | <i>Comments</i> |
|---|------------------------------|------------------|-------------|----------------------------------|-------------------|---|
| Injection wells (Class V) Large-Capacity Septic System (Drainfield Disposal Method) | D10 | D10-02 | A | High | C | Assume facility not connected to municipal sewage |
| Highways and roads, dirt/gravel | X24 | X24-01 | A | Low | C | Assume 1-20 roads in Zone A |
| Injection wells (Class V) Large-Capacity Septic System (Drainfield Disposal Method) | D10 | D10-01 | B | High | C | FAA King Salmon |
| Highways and roads, dirt/gravel | X24 | X24-02 | B | Low | C | Assume 1-20 roads in Zone B |
| Highways and roads, dirt/gravel | X24 | X24-03 | C | Low | C | Assume 1-20 roads in Zone C |

Table 3

*Contaminant Source Inventory and Risk Ranking for
USNPS Katmai King Salmon
Sources of Nitrates/Nitrites*

PWSID 260529.001

| <i>Contaminant Source Type</i> | <i>Contaminant Source ID</i> | <i>CS ID tag</i> | <i>Zone</i> | <i>Risk Ranking for Analysis</i> | <i>Map Number</i> | <i>Comments</i> |
|---|------------------------------|------------------|-------------|----------------------------------|-------------------|---|
| Laundromats without dry cleaning | C22 | C22-01 | A | Low | C | |
| Injection wells (Class V) Large-Capacity Septic System (Drainfield Disposal Method) | D10 | D10-02 | A | High | C | Assume facility not connected to municipal sewage |
| Airports | X14 | X14-01 | A | Low | C | King Salmon Airport |
| Highways and roads, dirt/gravel | X24 | X24-01 | A | Low | C | Assume 1-20 roads in Zone A |
| Injection wells (Class V) Large-Capacity Septic System (Drainfield Disposal Method) | D10 | D10-01 | B | High | C | FAA King Salmon |
| Airports | X14 | X14-01 | B | Low | C | King Salmon Airport |
| Highways and roads, dirt/gravel | X24 | X24-02 | B | Low | C | Assume 1-20 roads in Zone B |
| Highways and roads, dirt/gravel | X24 | X24-03 | C | Low | C | Assume 1-20 roads in Zone C |

Table 4

*Contaminant Source Inventory and Risk Ranking for
USNPS Katmai King Salmon
Sources of Volatile Organic Chemicals*

PWSID 260529.001

| <i>Contaminant Source Type</i> | <i>Contaminant Source ID</i> | <i>CS ID tag</i> | <i>Zone</i> | <i>Risk Ranking for Analysis</i> | <i>Map Number</i> | <i>Comments</i> |
|---|------------------------------|------------------|-------------|----------------------------------|-------------------|--|
| Laundromats without dry cleaning | C22 | C22-01 | A | High | C | |
| Motor /motor vehicle repair shops | C31 | C31-01 | A | Medium | C | |
| Injection wells (Class V) Large-Capacity Septic System (Drainfield Disposal Method) | D10 | D10-02 | A | Low | C | Assume facility not connected to municipal sewage |
| Tanks, diesel (underground) | T08 | T08-05 | A | High | C | Assume at least 1 diesel tank utilized for facility operations |
| Tanks, gasoline (underground) | T12 | T12-04 | A | High | C | Assume at least 1 gasoline tank utilized for facility operations |
| Tanks, heating oil, nonresidential (aboveground) | T14 | T14-01 | A | Low | C | Assume heating oil used for facility operations. |
| Airports | X14 | X14-01 | A | High | C | King Salmon Airport |
| Highways and roads, dirt/gravel | X24 | X24-01 | A | Low | C | Assume 1-20 roads in Zone A |
| Injection wells (Class V) Large-Capacity Septic System (Drainfield Disposal Method) | D10 | D10-01 | B | Low | C | FAA King Salmon |
| Tanks, heating oil, residential (above ground) | R08 | R08-01 | B | Medium | C | Assume 10 or less residential heating oil tanks in Zone B |
| Tanks, diesel (underground) | T08 | T08-01 | B | High | C | FAA King Salmon, Diesel |
| Tanks, diesel (underground) | T08 | T08-02 | B | High | C | FAA King Salmon, Diesel |
| Tanks, diesel (underground) | T08 | T08-03 | B | High | C | FAA King Salmon, Diesel |
| Tanks, diesel (underground) | T08 | T08-04 | B | High | C | FAA King Salmon, Diesel |
| Tanks, gasoline (underground) | T12 | T12-01 | B | High | C | FAA King Salmon, Gasoline |
| Tanks, gasoline (underground) | T12 | T12-02 | B | High | C | FAA King Salmon, Gasoline |
| Tanks, gasoline (underground) | T12 | T12-03 | B | High | C | FAA King Salmon, Gasoline |
| Contaminated sites, DEC recognized, non-Superfund non-RCRA | U04 | U04-02 | B | High | C | King Salmon AS OT028 GW Zone 2, RecKey #199625X928902, Status: Active, diesel, gasoline, BTEX, and TCE groundwater plumes in the A-aquifer |
| Open Leaking Underground Fuel Storage Tank (LUST) Sites | U07 | U07-01 | B | High | C | FAA King Salmon, RecKey #1993250022551, Event ID 708, Facility ID 1 releases of gasoline and diesel fuel were reported following a site assessment for the removal of 6 tanks. |
| Airports | X14 | X14-01 | B | High | C | King Salmon Airport |
| Highways and roads, dirt/gravel | X24 | X24-02 | B | Low | C | Assume 1-20 roads in Zone B |

Table 4 (continued)

*Contaminant Source Inventory and Risk Ranking for
USNPS Katmai King Salmon
Sources of Volatile Organic Chemicals*

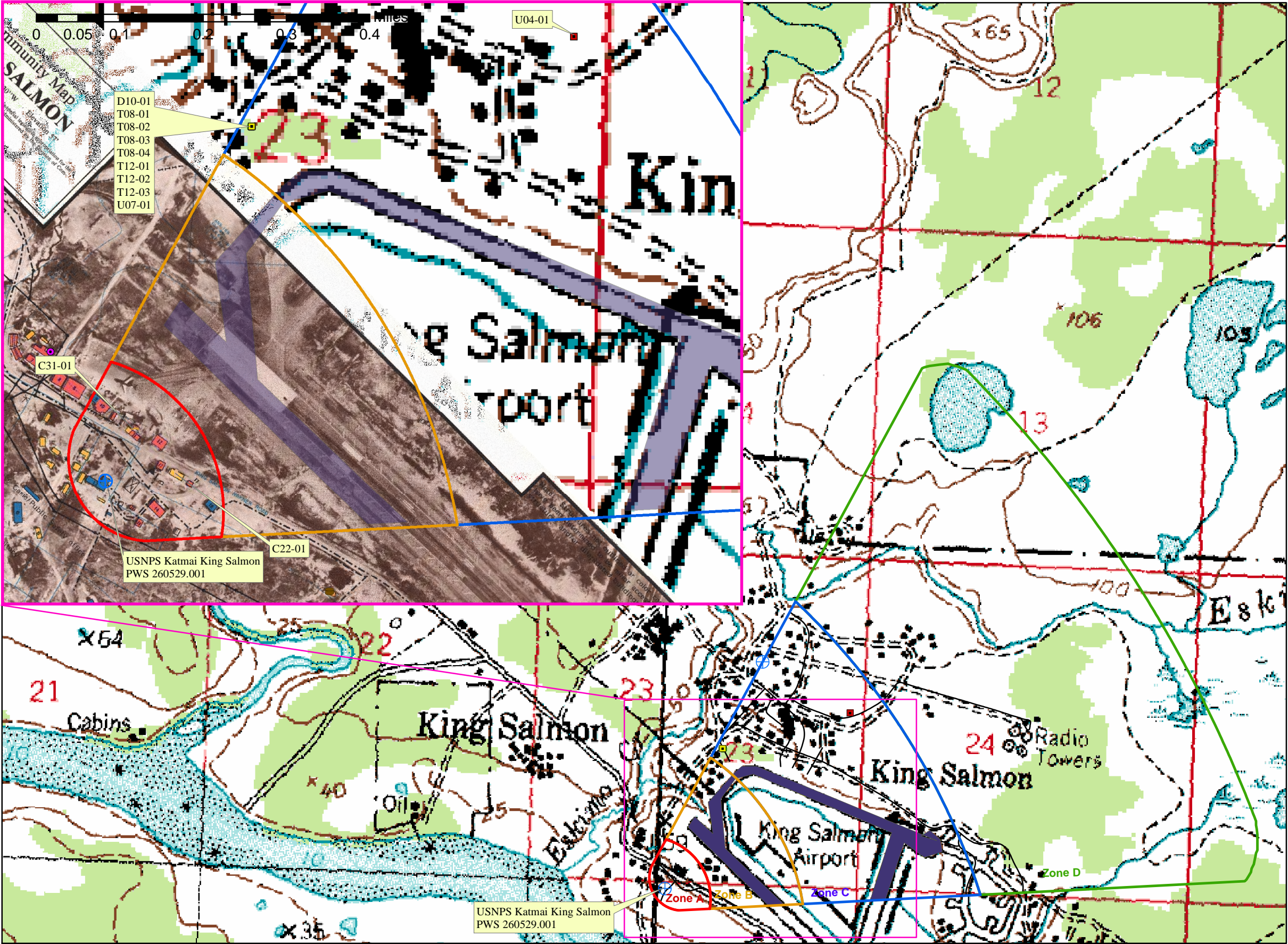
PWSID 260529.001

| <i>Contaminant Source Type</i> | <i>Contaminant Source ID</i> | <i>CS ID tag</i> | <i>Zone</i> | <i>Risk Ranking for Analysis</i> | <i>Map Number</i> | <i>Comments</i> |
|---------------------------------|------------------------------|------------------|-------------|----------------------------------|-------------------|-----------------------------|
| Highways and roads, dirt/gravel | X24 | X24-03 | C | Low | C | Assume 1-20 roads in Zone C |

APPENDIX C

Drinking Water Protection Area and Potential and Existing Contaminant Sources (Map C)

Public Water Well System for PWS #260529.001 USNPS Katmai King Salmon
Showing Potential and Existing Sources of Contamination



LEGEND

Public Water System Well

Hydrography/Physical

Parcels

Stream

Lake or Pond

Contours

Transportation

Primary Route (Class 1)

Secondary Route (Class 2)

Road (Class 3)

Road (Class 4)

Road (Class 5, Four-wheel drive)

Groundwater Protection Zones

Zone A Protection Area- Several Months Travel Time

Zone B Protection Area- 2 Years Travel Time

Zone C Protection Area- 5 Years Travel Time

Zone D Protection Area- 10 Years Travel Time

Existing or Potential Contaminant Sources

Laudromats without dry cleaning (C22)

Motor vehicle repair shop (C31)

Injection well (Class V) Large capacity septic system (D10)

Underground diesel tank (T08)

Underground gasoline tank (T12)

Contaminated sites, DEC recognized, non-Superfund, non-RCRA (U04)

Open leaking underground fuel storage tank (LUST) (lubricants or other petroleum products) (U07)

Airport (X14)

Data Sources:

Contaminant Sources, Public Water System Wells, Contours
Alaska Department of Environmental Conservation (ADEC)

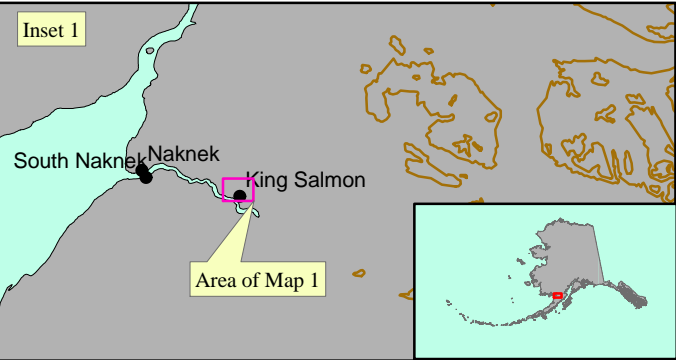
Critical Facilities, Federal Emergency Management Agency (FEMA)

All other data:

United States Geological Survey (USGS)

Drinking Water Protection Areas based on "Alaska Drinking Water Protection Program - Guidance Manual for Class B Public Water Systems" published by ADEC

URS Corporation does not guarantee the accuracy or validity of the data provided.



USNPS Katmai King Salmon
PWS 260529.001

Appendix C Map C

APPENDIX D

Vulnerability Analysis for Public Drinking Water Source (Charts 1-8)

Chart 1. Susceptibility of the wellhead - USNPS Katmai King Salmon (PWS No. 260529.001)

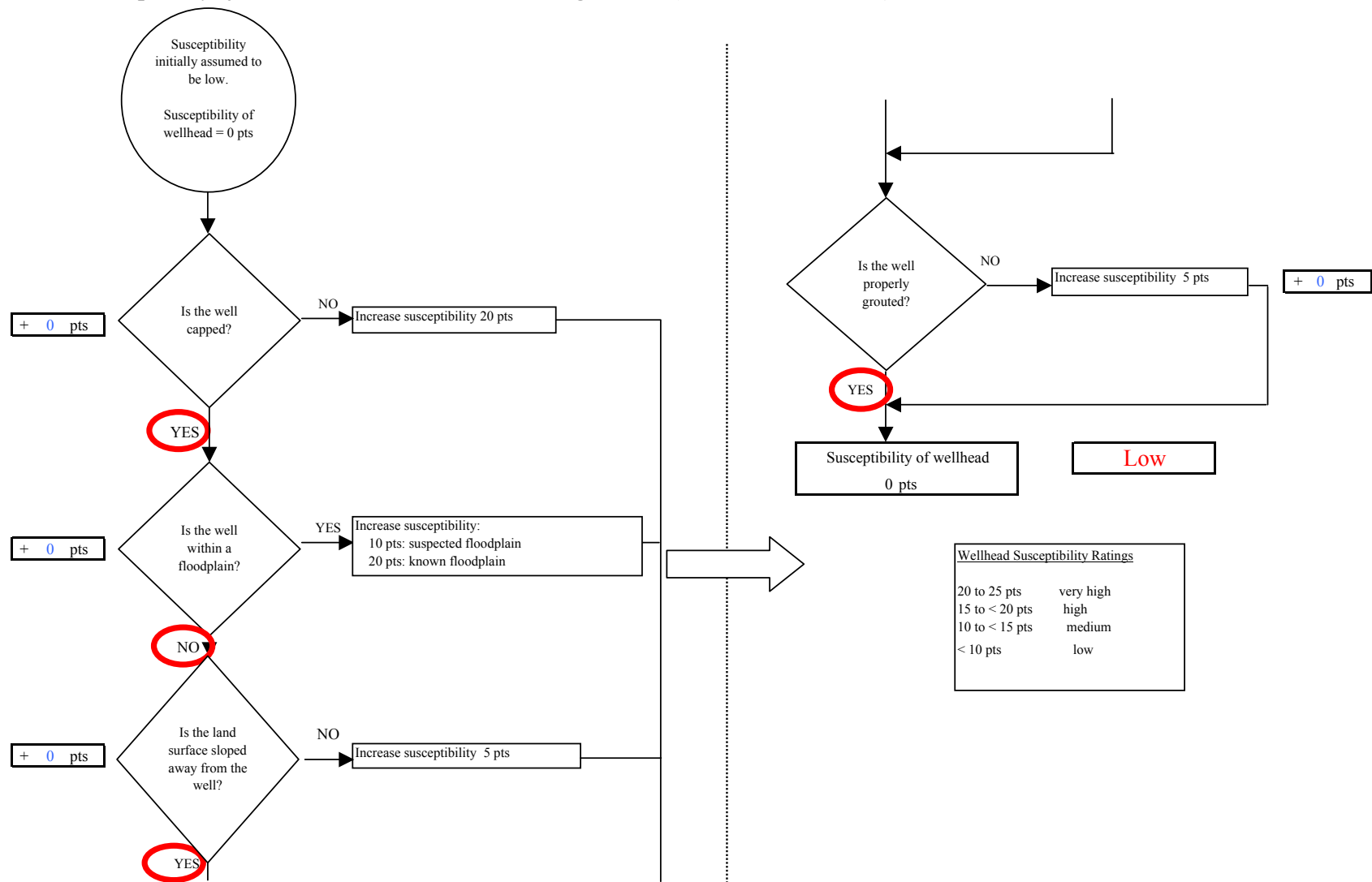


Chart 2. Susceptibility of the aquifer USNPS Katmai King Salmon (PWS No. 260529.001)

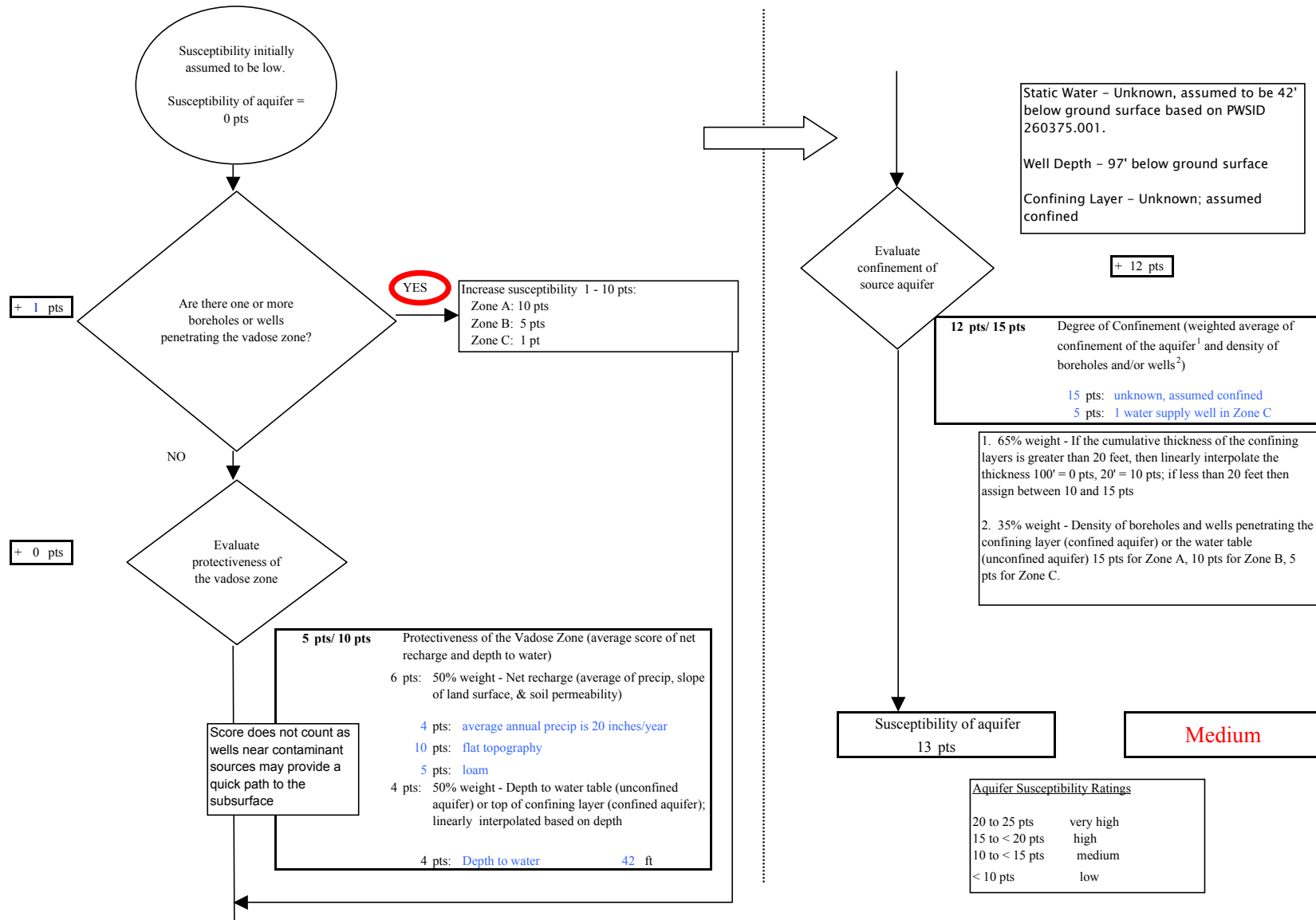


Chart 3. Contaminant risks for USNPS Katmai King Salmon (PWS No. 260529.001) - Bacteria & Viruses

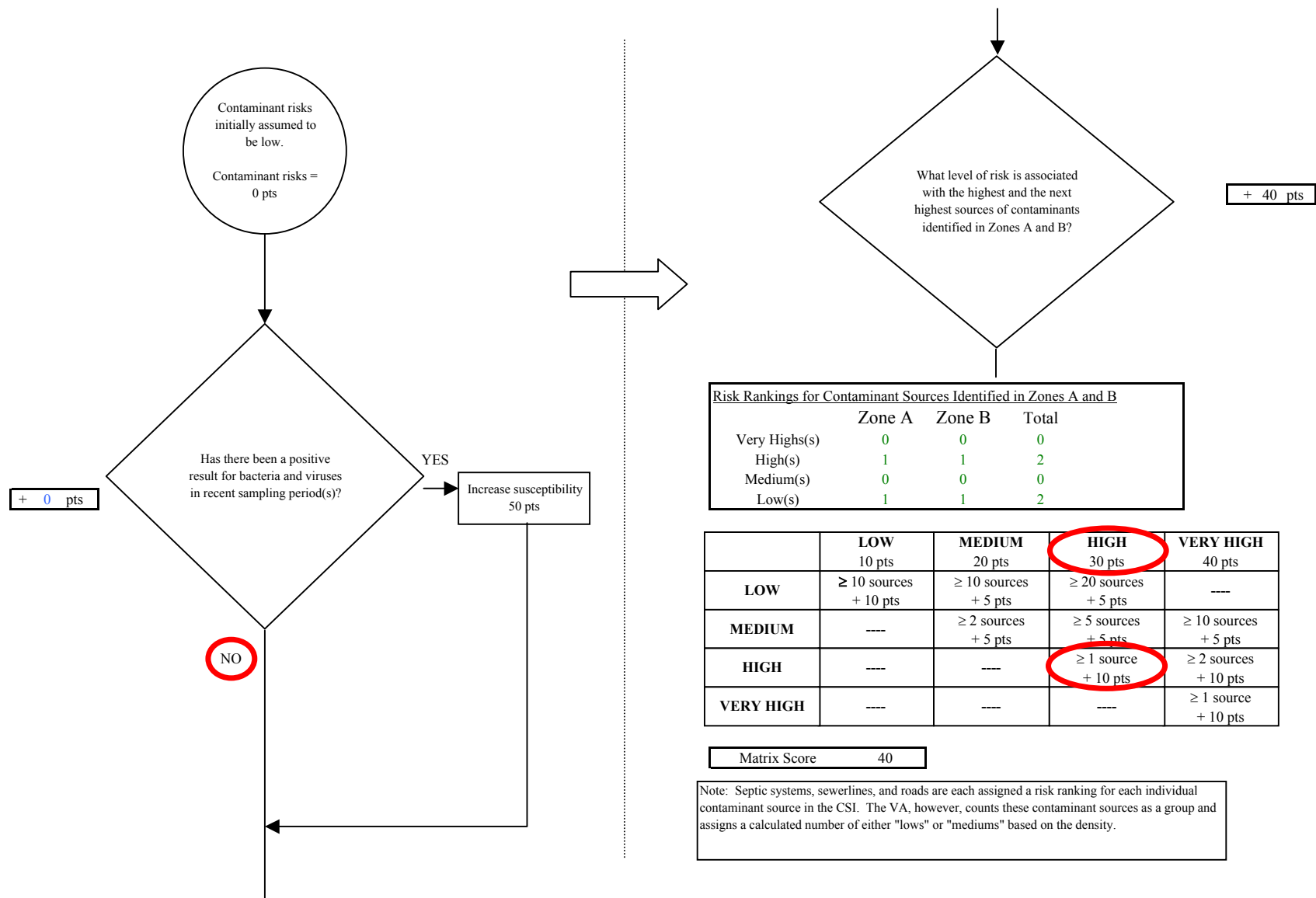


Chart 3. Contaminant risks for USNPS Katmai King Salmon (PWS No. 260529.001) - Bacteria & Viruses

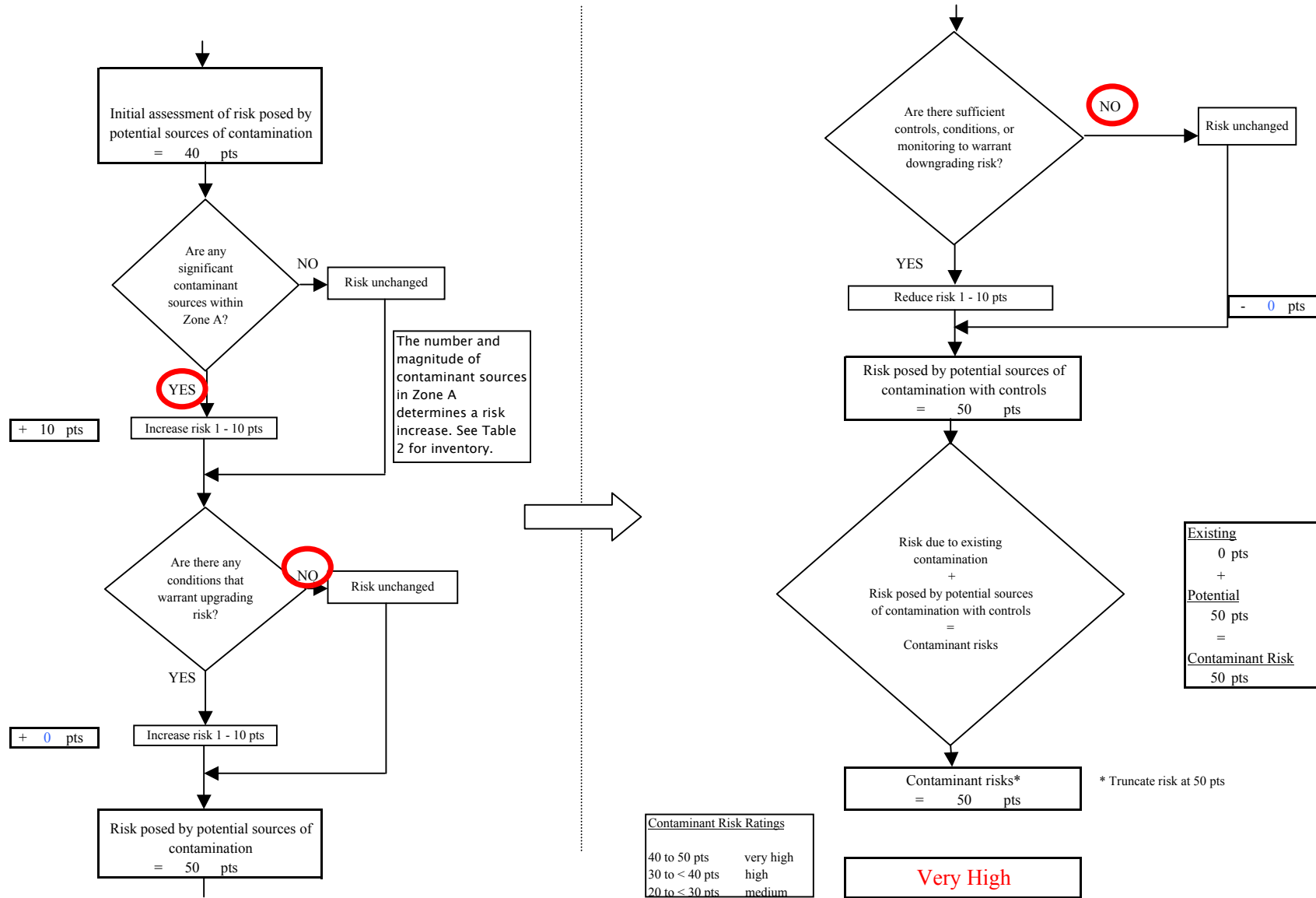


Chart 4. Vulnerability analysis for USNPS Katmai King Salmon (PWS No. 260529.001) - Bacteria & Viruses

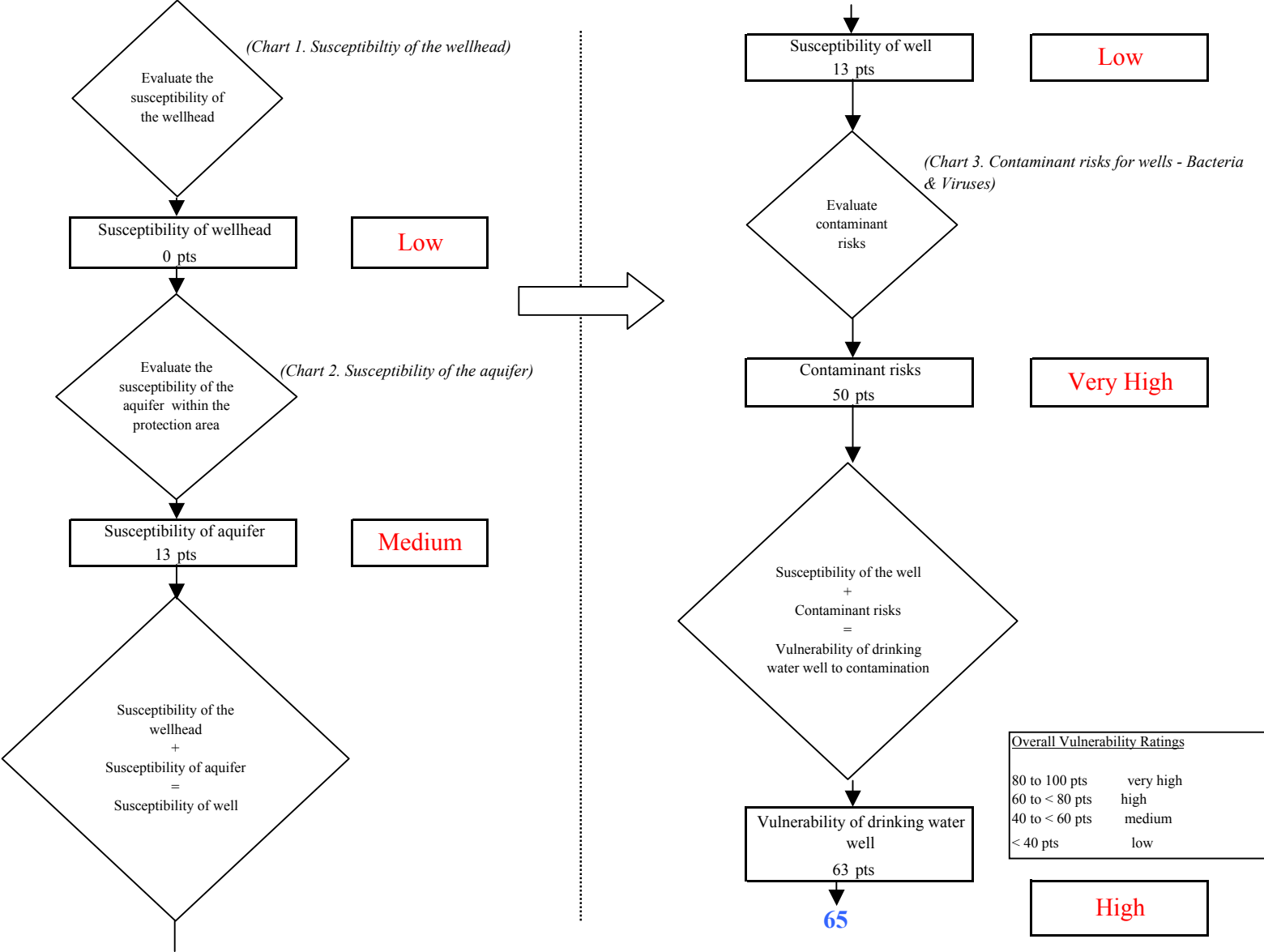


Chart 5. Contaminant risks for USNPS Katmai King Salmon (PWS No. 260529.001) - Nitrates and Nitrites

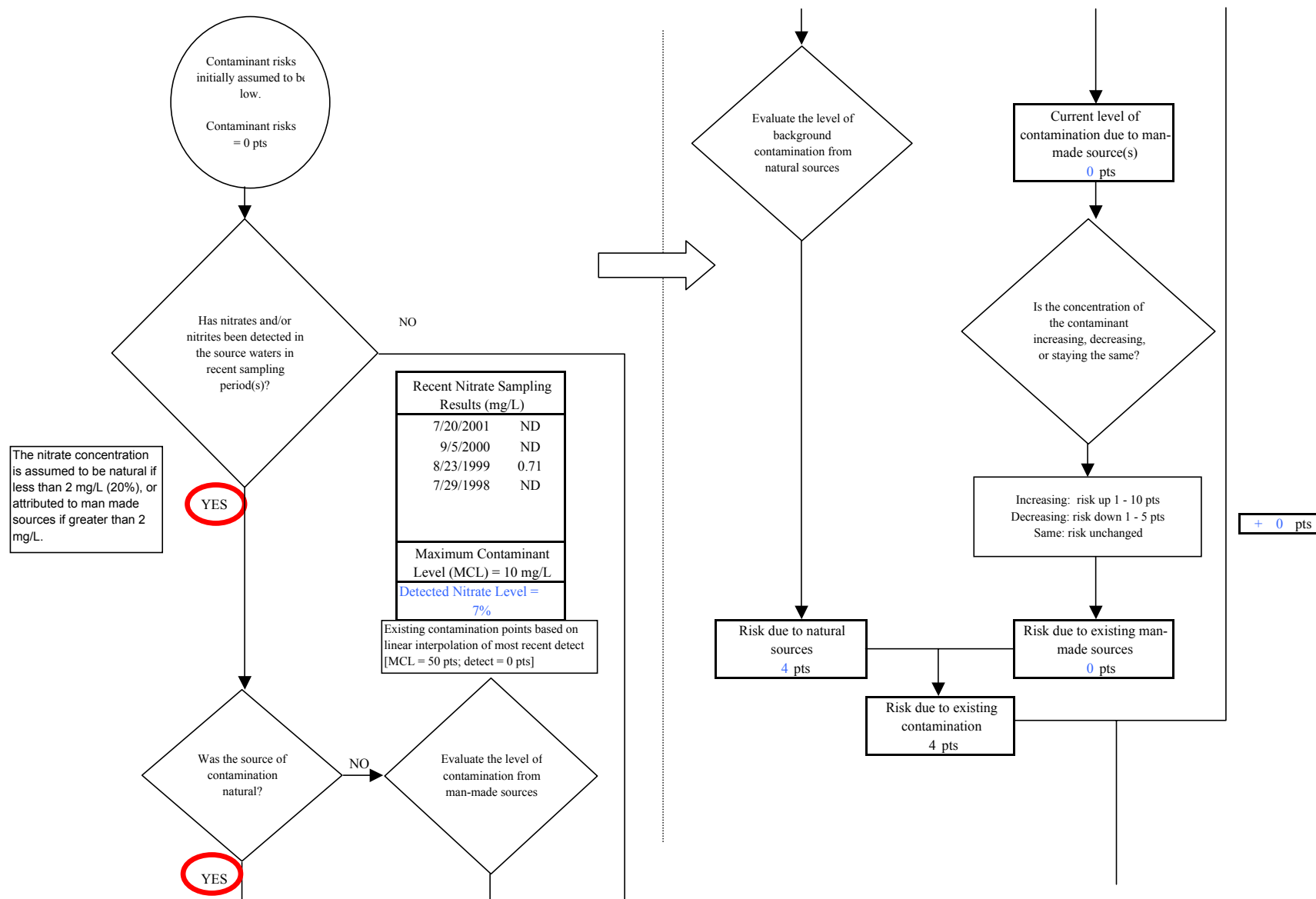


Chart 5. Contaminant risks for USNPS Katmai King Salmon (PWS No. 260529.001) - Nitrates and Nitrites

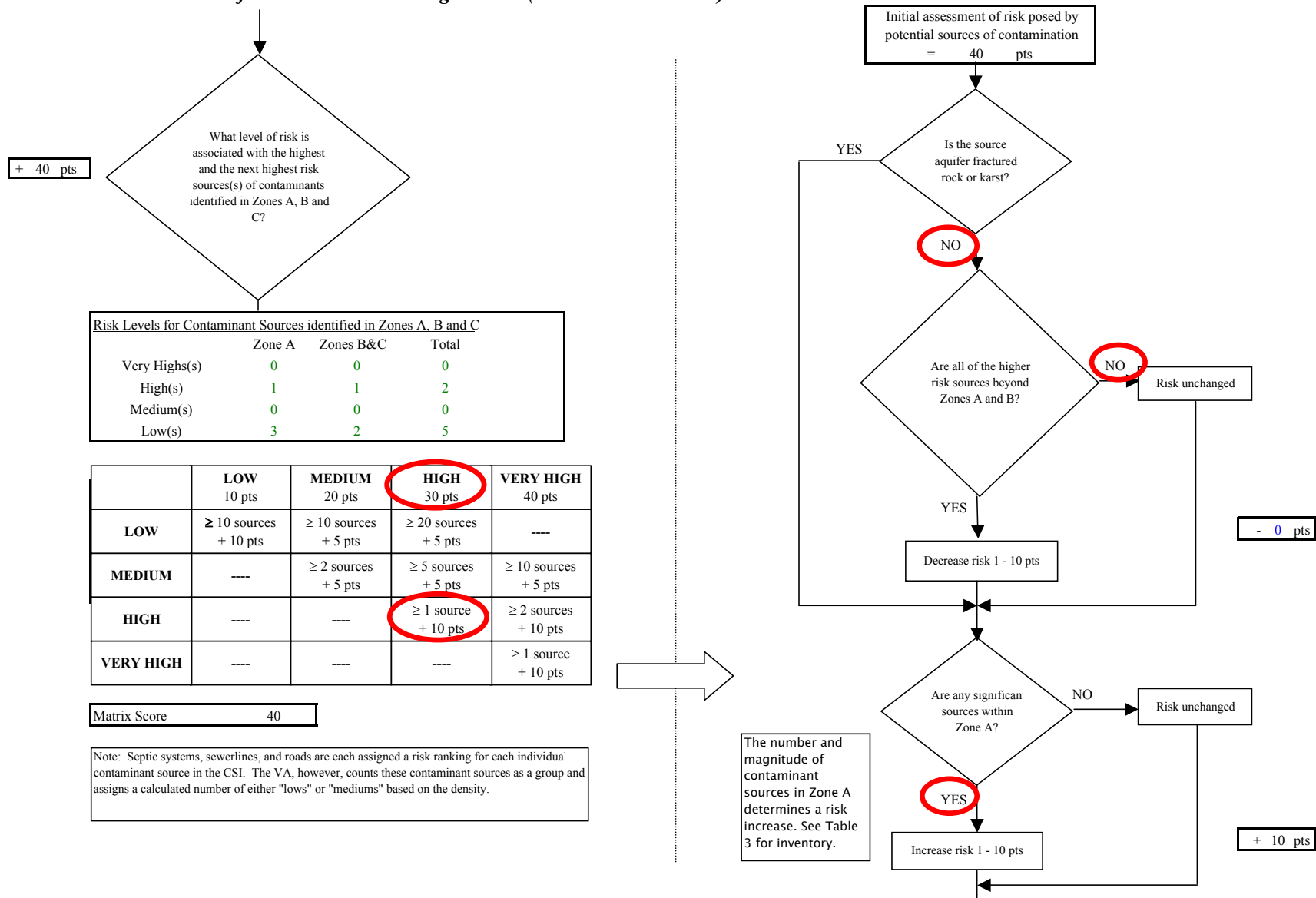


Chart 5. Contaminant risks for USNPS Katmai King Salmon (PWS No. 260529.001) - Nitrates and Nitrites

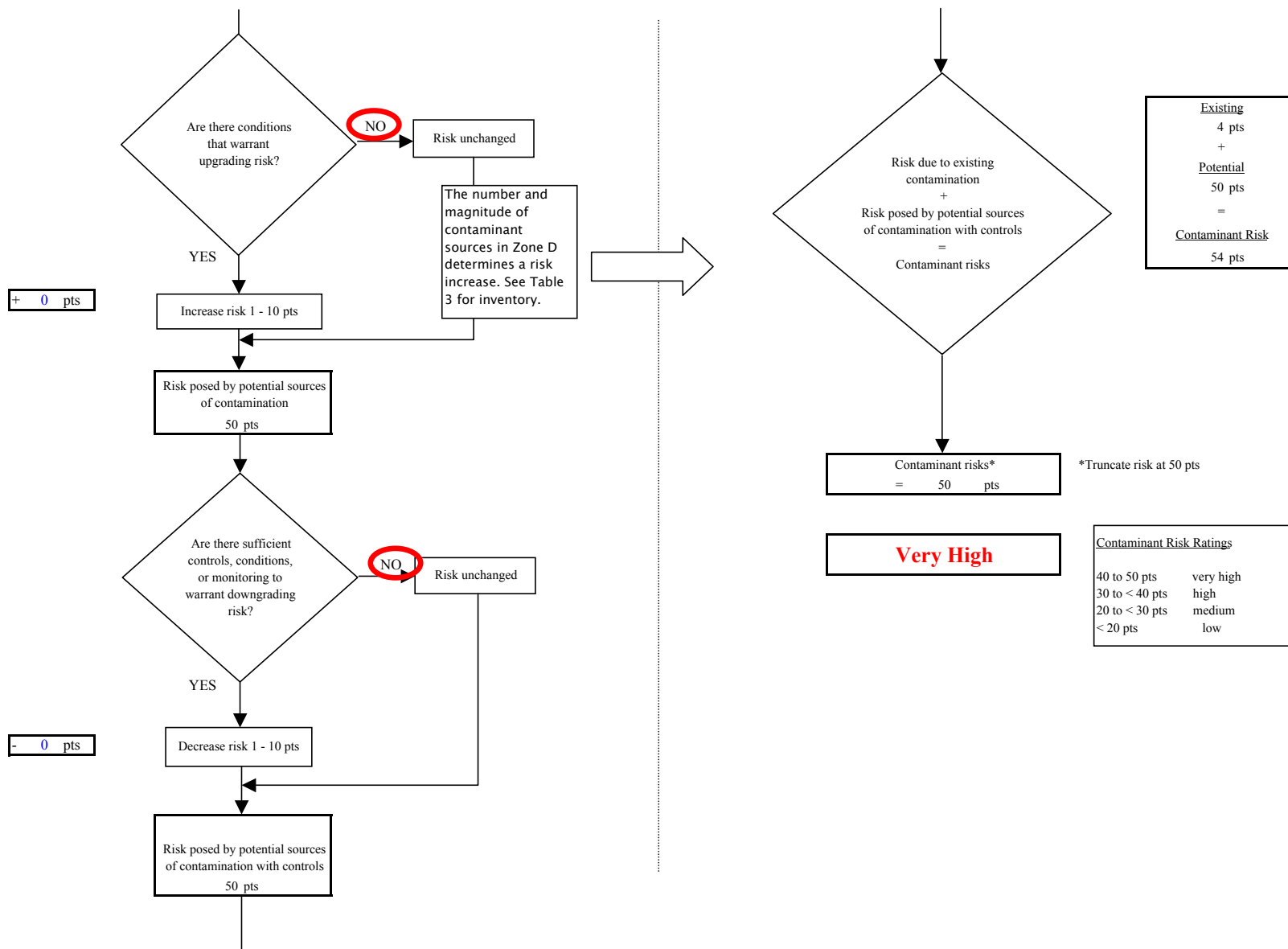


Chart 6. Vulnerability analysis for USNPS Katmai King Salmon (PWS No. 260529.001) - Nitrates and Nitrites

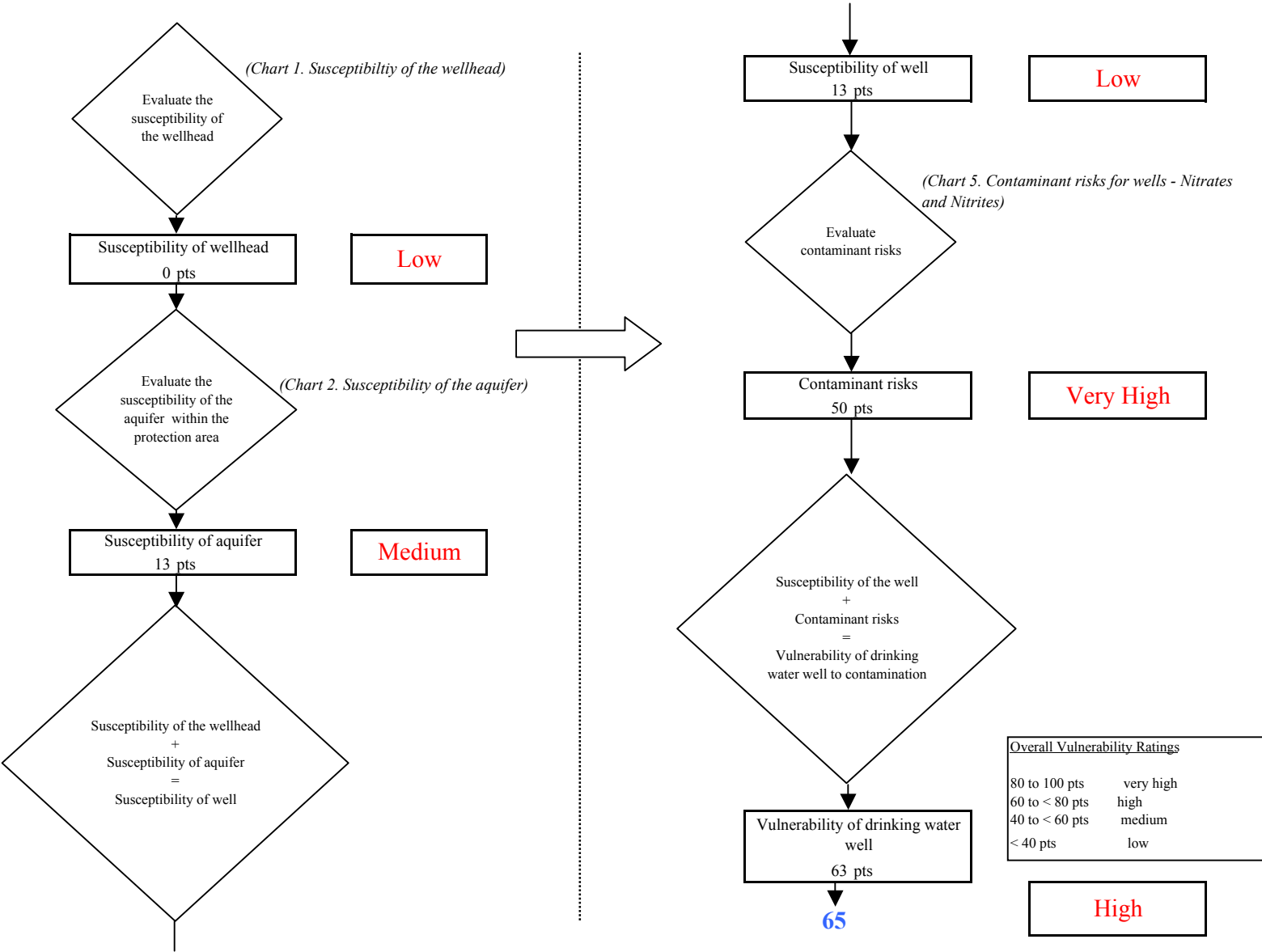


Chart 7. Contaminant risks for USNPS Katmai King Salmon (PWS No. 260529.001) - Volatile Organic Chemicals

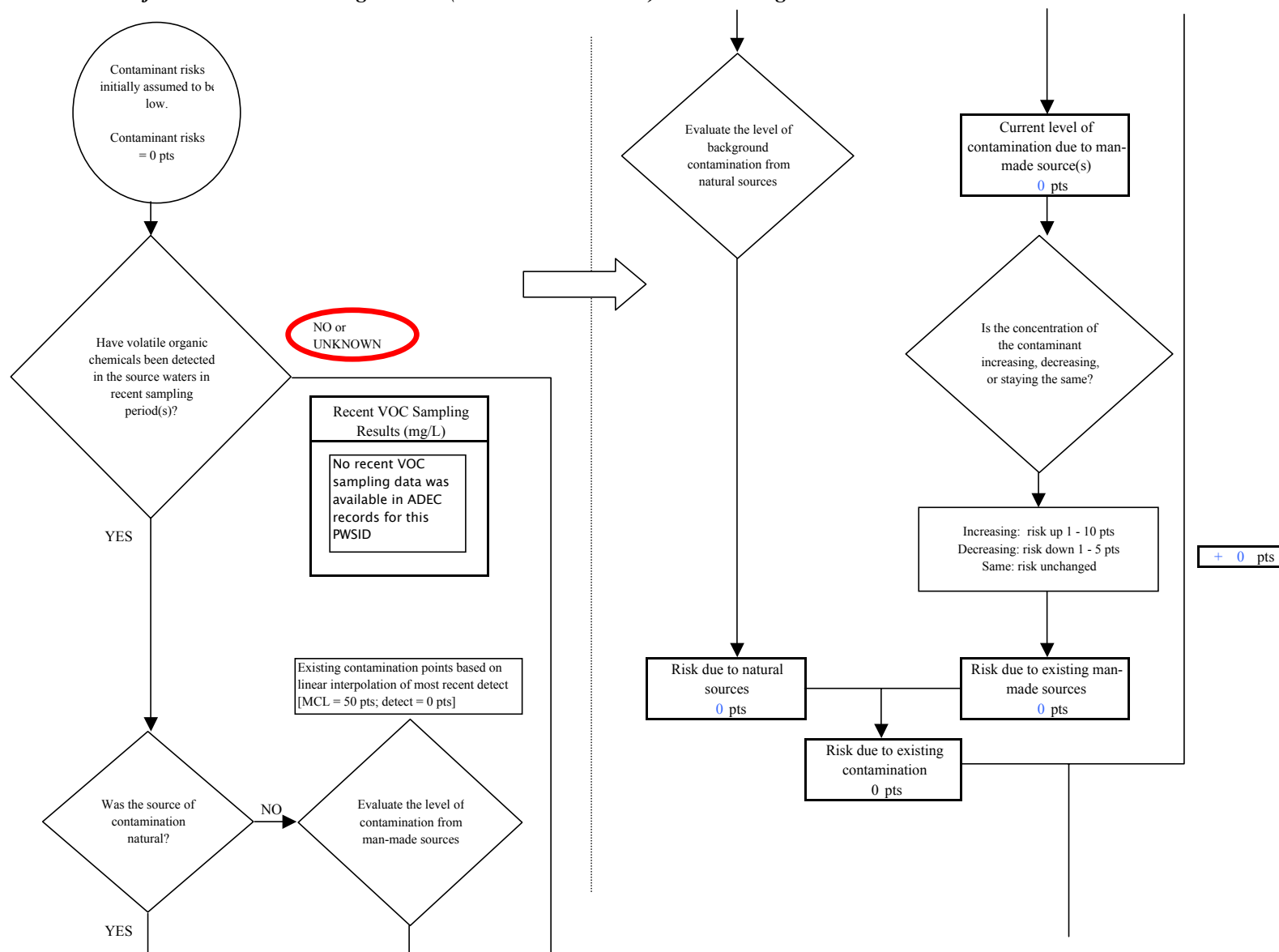


Chart 7. Contaminant risks for USNPS Katmai King Salmon (PWS No. 260529.001) - Volatile Organic Chemicals

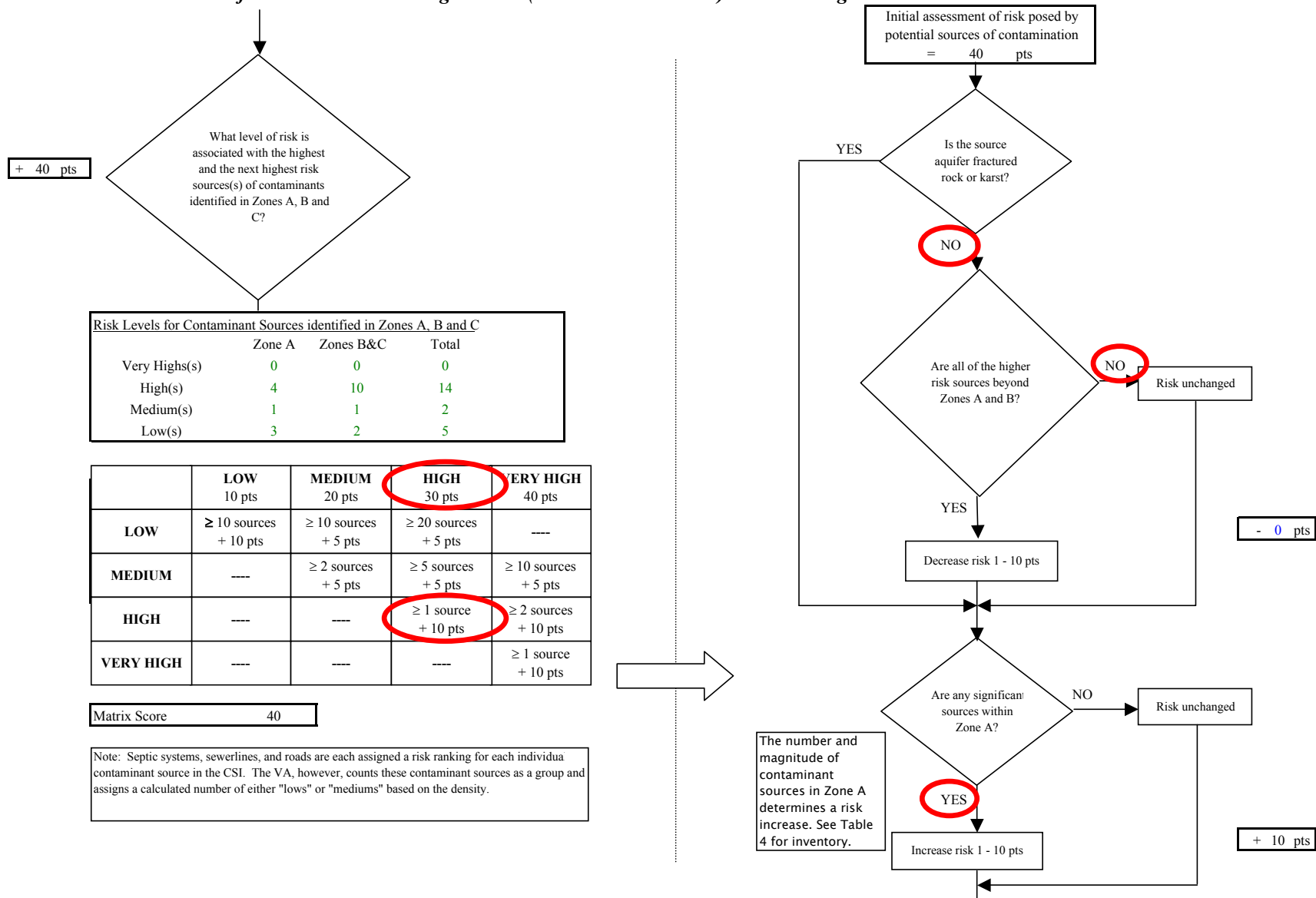


Chart 7. Contaminant risks for USNPS Katmai King Salmon (PWS No. 260529.001) - Volatile Organic Chemicals

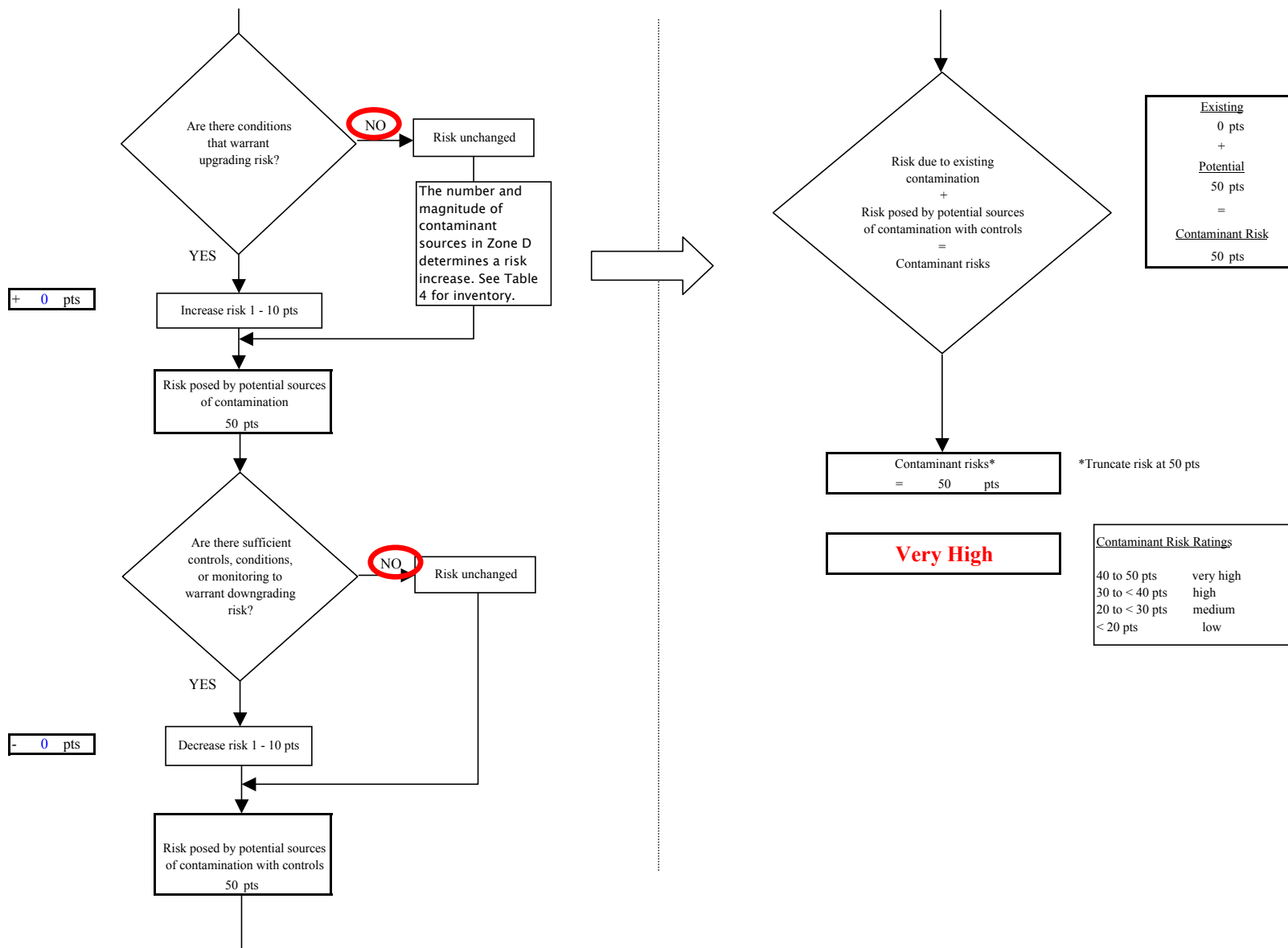


Chart 8. Vulnerability analysis for USNPS Katmai King Salmon (PWS No. 260529.001) - Volatile Organic Chemicals

