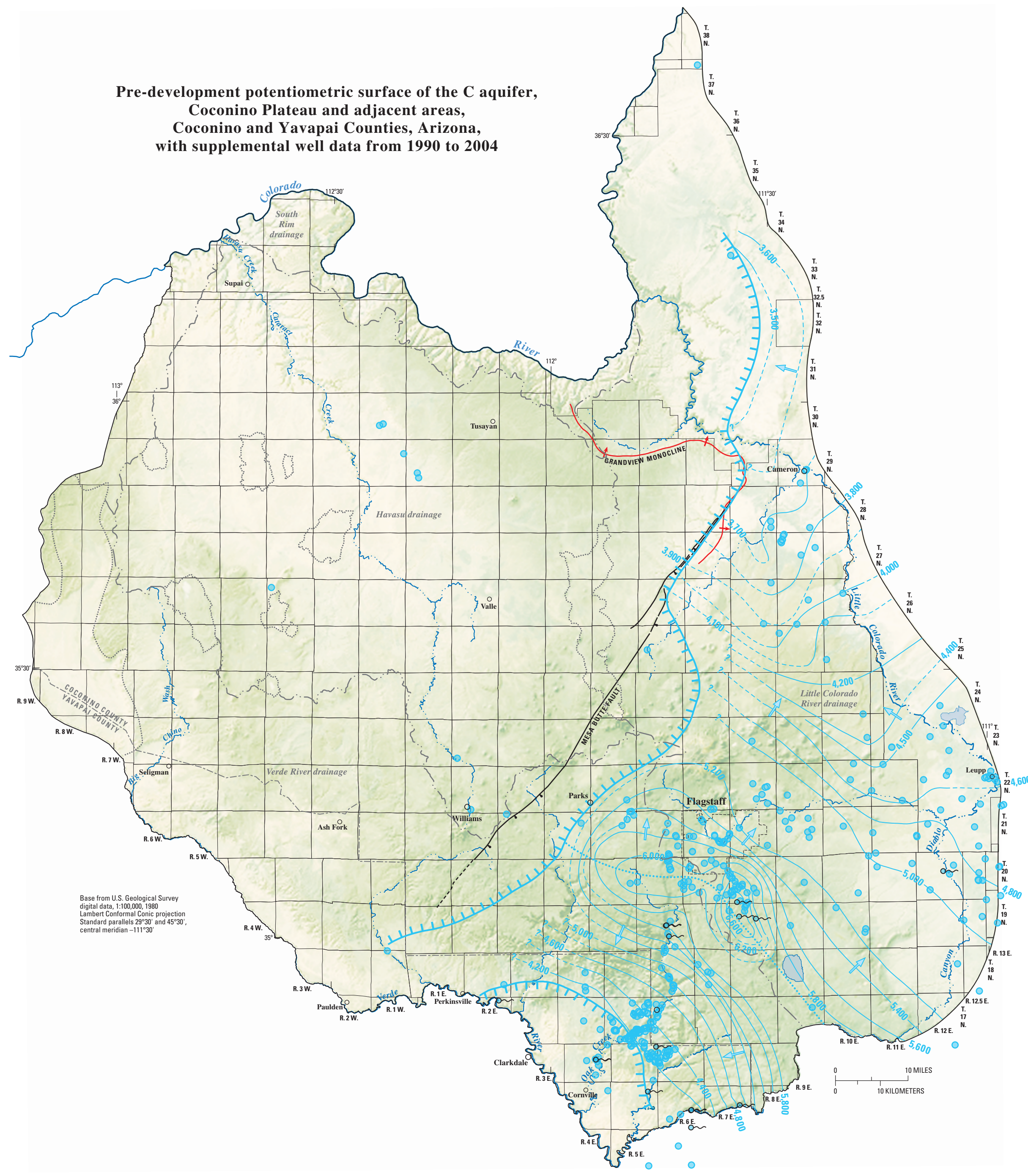
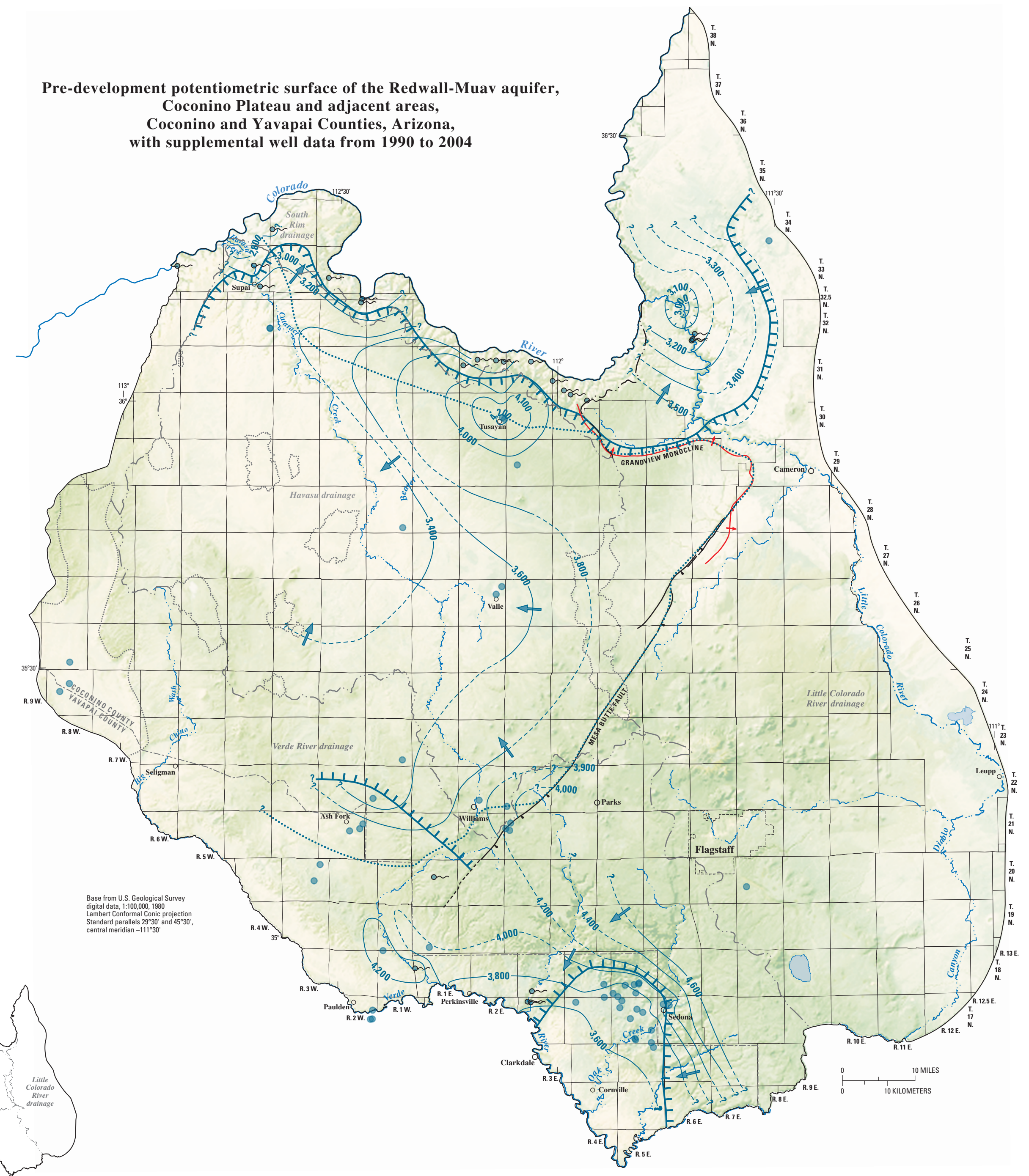


**Pre-development potentiometric surface of the C aquifer,
Coconino Plateau and adjacent areas,
Coconino and Yavapai Counties, Arizona,
with supplemental well data from 1990 to 2004**



**Pre-development potentiometric surface of the Redwall-Muav aquifer,
Coconino Plateau and adjacent areas,
Coconino and Yavapai Counties, Arizona,
with supplemental well data from 1990 to 2004**



- EXPLANATION**
- 4,800 — 7 POTENTIOMETRIC CONTOUR OF THE C AQUIFER—Shows altitude at which water would have stood in a tightly cased well prior to 1980, in feet above sea level. Additional well data from 1990 to 2004 used to extend contours in areas not previously developed. Contour interval 100 feet and 200 feet. Dashed where approximately located, queried where uncertain. Datum is National Geodetic Vertical Datum of 1929 (Bills and Flynn, 2002; Hart and others, 2002; and Dwen-Joyce and Bell, 1983).
 - 4,200 — 7 POTENTIOMETRIC CONTOUR OF THE REDWALL-MUAV AQUIFER—Shows altitude at which water would have stood in a tightly cased well penetrating the Redwall-Muav aquifer prior to about 1980, in feet above sea level. Additional well data from 1990 to 2004 used to extend contours in areas not previously developed. Contour interval 100 feet and 200 feet. Dashed where approximately located, queried where uncertain. Datum is National Geodetic Vertical Datum of 1929 (Bills and Flynn, 2002).
 - — — — — APPROXIMATE AREAL EXTENT OF THE C AQUIFER
 - — — — — APPROXIMATE BOUNDARY BETWEEN CONFINED AND UNCONFINED CONDITIONS IN THE REDWALL-MUAV AQUIFER—Queried where uncertain
 - — — — — C AQUIFER GROUND-WATER DIVIDE
 - — — — — REDWALL-MUAV AQUIFER GROUND-WATER DIVIDE—Queried where uncertain
 - — — — — DIRECTION OF GROUND-WATER MOVEMENT IN THE C AQUIFER
 - — — — — DIRECTION OF GROUND-WATER MOVEMENT IN THE REDWALL-MUAV AQUIFER
 - — — — — FAULT—Bar and ball on the downthrown side. Dashed where uncertain
 - — — — — MONOCLINE—Axial trace located approximately midway between top and bottom hinges of folds
 - — — — — BASIN BOUNDARY
 - — — — — CLOSED-BASIN BOUNDARY
 - C AQUIFER WELL
 - C AQUIFER SPRING
 - REDWALL-MUAV AQUIFER WELL
 - REDWALL-MUAV AQUIFER SPRING

**LOCATION OF SELECTED WELLS, SPRINGS, AND THE POTENTIOMETRIC SURFACE OF THE
C AQUIFER AND REDWALL-MUAV AQUIFER, COCONINO PLATEAU AND ADJACENT AREAS,
COCONINO AND YAVAPAI COUNTIES, ARIZONA**

By
Donald J. Bills, Marilyn E. Flynn, and Stephen A. Monroe
2007