



MOUNTAINEERING CLUB OF ALASKA

BOX 102037

ANCHORAGE, ALASKA 99510

NOVEMBER 1988

Volume 31, Issue 11

### NOVEMBER MEETING

The next monthly meeting of the MCA will be held Wednesday, November 16th, 7:30 pm, at the Pioneer Schoolhouse, top floor, 3rd and Eagle Sts., downtown Anchorage. After the business meeting, there will be a slide show on climbing in the Tordrillos.

### HIKING AND CLIMBING SCHEDULE

- Nov. 21-22    WINTER CAMPING  
Basic winter camping trip to learn the fundamentals of proper dress, equipment, and food preparation. Destination will be above town in the Chugach Mts. Class A. Please contact leader beforehand. Meet at UAA parking lot at 9:00am.  
Leader: Mike King 694-4307h 258-6269w
- 29    AVALANCHE BEACON PRACTICE  
Tuesday night 7:00pm at the Russian Jack parking lot, by the warming hut. Bring warm clothes and beacons (shovels and probes optional).  
Leader: Marcy Baker 2740105
- Dec.    3    INDIAN PASS  
Ski up the trail to the pass and back. 2000', 10 miles round triip. Class B. Skins or wax.  
Leader: Neil O'Donnell 274-5069
- 17-18    FLATTOP SLEEPOUT  
Winter solstice sleepout held every year. Be prepared for cold and high winds and possible avalanche hazard. More details at December meeting. No leader usually designated. Class A.
- 20    MOONLIGHT SKI  
Details later.  
Leader: Rick Maron 349-3064
- Jan. 21-22    SNOW SHELTERS  
Learn how to make shelters. Igloos! Caves! Trenches! Full moon! You dig em, you sleep in em. No tents. We'll go to Manitoba Mt. so bring skis and skins and plan on some great skiing, too. Articles of destruction/construction needed: shovels (no wimpy ones), snow saws, extra mittens. Plan on getting wet.  
Leader: Willy Hersman 338-5132

MOUNTAINEERING CLUB OF ALASKA  
STATEMENT OF INCOME AND EXPENSES

For the period beginning October 23, 1987 and ending October 19, 1988.

SUPPORT AND REVENUE  
-----

Membership Dues	\$2,870.00	
USGS map order	1,283.15	
Class fees - Avalanche workshop	1,050.00	
Money Market Fund interest	219.51	
Class fees - Ice climbing class	140.00	
Advertising revenue	30.00	
Donations	28.00	
	-----	
Total support and revenue		\$5,620.66 =====

EXPENSES  
-----

Class fees - Avalanche workshop	\$1,350.00	
USGS map order	1,283.15	
Hut permit and repairs	799.13	
Mailing expenses	508.96	
Meeting place fees	457.50	
Purchase of Ortovox avalanche beacons	430.90	
Printing of Scree	307.90	
Mountaineering Club patches	252.00	
Donation to Alaska Mountain Rescue Group	250.00	
Telephone bill for club hotline	245.09	
Picnic supplies	205.06	
Meeting refreshments	169.27	
President's award	146.00	
Class fees - Ice climbing class	140.00	
Miscellaneous	60.00	
Office supplies	52.31	
Binding of Scree	35.30	
Subscription to Climbing Magazine	32.00	
Club equipment repair	15.00	
Bank service charges	16.75	
	-----	
Total expenses		\$6,756.32 =====
TOTAL DECREASE IN CLUB MONIES		(\$1,135.66) =====

ENDING BALANCE PER OCTOBER 1987 TREASURER'S REPORT	\$5,546.30
TOTAL DECREASE IN CLUB MONIES	(1,135.66)
ENDING BALANCE PER OCTOBER 1988 TREASURER'S REPORT	\$4,410.64 =====

Although the 1987-1988 Income Statement shows a decrease in club monies of \$1,135.66, it should be noted that four items comprise the majority of the decrease. The club purchased three Ortovox avalanche beacons in 1987 to replace the untrustworthy pieps beacons. We also contributed \$250.00 to the Alaska Mountain Rescue Group to help in their efforts to maintain a trained, well equipped rescue squad. The club also contributed \$300.00 towards the cost of an avalanche workshop put on in 1988. Workshop participants paid the remaining cost of the class. Finally, the club spent \$252.00 for 200 club patches that will be given to folks who volunteer their time to help out the club. The patches will, unfortunately, last several years.

### MAP ORDER

Again this year the Club had a successful map order. Collectively we saved \$500 on a \$1000 order consisting of 374 maps. Maps can be picked up at the November meeting or by making alternative arrangements. Rick Maron  
349-3064

### AVALANCHE BEACON ORDER

Arrangements have been made through Paul Denkwalter at AMH for MCA members to purchase beacons at a substantial discount. The offer is for the new Ramer model beacon, which has a dual frequency and is on sale to members for \$85.00. This is about half of what most beacons go for. The orders are being taken at Alaska Mountaineering and Hiking on Spenard Rd. Remember to bring your membership card. The order will be sent in sometime after the November meeting. The club will sponsor at least two beacon practices during the snow season. One of them is this month; see the H and C Schedule.

### TRIP REPORTS

#### Raggedtop Mt.

Rick Maron

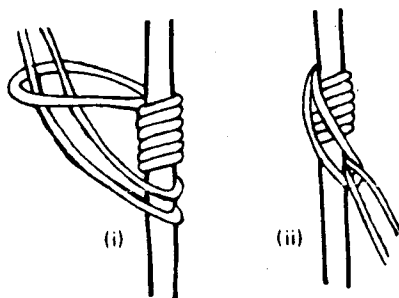
By consensus within the group, we did not take skis on the October 22nd outing that was billed as a ski mountaineering/telemarking trip, and instead struck out on foot for the summit of Raggedtop Mt. Our starting point was near the California Creek crossing of the Crow Creek Road, thence northerly up the obvious ridgeline to the alpine zone. A party of Willy Hersman, Tim Neale, Nancy Pease and me reached the prominent knob on the south end of the summit ridge in bright, warm sun and calm air. True summit is farther north on the ridge.

#### Alaska Mountain Guide Workshop at Mint Glacier

Todd Miner

Over the Labor Day Weekend a few of us gathered at the Mint Glacier Hut to discuss the role of the mountain professional and to trade techniques. Ten people attended. On Saturday we spent the morning finding suitable practice grounds for a review of client/student belaying. Stress was placed on being able to tie-off a struggling or fallen climber. Most favored the side tie-in rather than the rear tie-in for hip belays. (See the chart on belay comparisons.)

The klemheist hitch was used extensively in place of the prussik. Its main advantage is ease of breaking after loading. Main disadvantage is that it will slide very easily if the pull is not directed right. Mistying is also more common since it is more complicated.



KLEMHEIST KNOT

# BELAY COMPARISONS

TYPE	DEFINITION	SITUATIONS	ADVANTAGES	DISADVANTAGES	NOTES
Hand	Simple hand/arm strength	Used only on low angle, broken terrain by very experienced climbers	Works well on stiff, iced ropes. Very dynamic. Quick to set-up	Very little holding power	May be applicable on guided climbs - normally not appropriate for educational situations
Flossing	Wrap of rope around a horn, tree, boulder, etc.	Broken terrain, ridges, etc.	Quick to set-up. Works well on stiff, icy ropes (hip mode)	Not good for rope Holding power variable (hand mode)	Can be used with hip belay or, more commonly, hand belay. Should be used with discretion in educational situations.
Hip	Classic American belay	Top ropes, low angle leads, stiff iced ropes	Easy rope handling and versatile. Dynamic	Can be painful and difficult to stop serious fall. Difficult to tie-off	Arm wrap can enhance holding power. Ideally anchored in back or to "feeling" side.
Mechanical (from body)	From the body: Sticht plate, Figure 8 device (either mode), Tuber, Muentner (Italian) hitch, etc.	Top rope or lead climbs where some dynamic quality is desired.	Somewhat dynamic. Good holding power	Can be difficult to tie-off. Rope management slow to difficult. Requires specialized equipment.	Belayer must be anchored
Mechanical (from anchor)	Direct from anchor: Sticht plate, Figure 8 device (either mode), Tuber, Muentner (Italian) hitch, etc.	Lead climbs	Excellent holding power. Easy to tie-off	Non-dynamic. Rope management slow to difficult. Requires specialized equipment	Belayer should be anchored

Short-roping, allowing less rope between partners, was advocated for broken or mixed terrain. Lessened rope drag and easier communication are advantages, but there is a need for experienced judgement as to how much rope to carry and the possible confusion over tie-in. Like the klemheist, short-roping is probably best suited for intermediate/advanced climbers.

Leashing, used by guides in Europe, Canada and New Zealand when traveling over low angle, broken terrain involves only a 4 to 6-foot length of rope between climbers. This allows a more experienced climber to directly aim a less experienced or weakened climber, showing him where to step, controlling the pace and to communicate easier.

Sunday morning we awoke to rain and snow, and we turned to conversation. We discussed the pros and cons of national certification for guiding. There is pressure from park managers and insurance companies for standards in the business. Standards for rock, snow/ice, first aid, avalanche safety, skiing, rescue and teaching/leadership were all discussed. Some of these will be easy for people to agree on, others not so easy.

The most valuable aspect of the workshop was the comraderie developed from working together. I wish more guides would have attended. Golden opportunities personally, professionally, and program-wise were missed by those who did not participate.

#### MINUTES OF THE OCTOBER MEETING

Once again the meeting was held at the Pioneer Schoolhouse. It began at 7:50pm, Willy Hersman presiding. Willy informed members of the death of Steve Koslow, a fine mountaineer and outdoorsman. The reading of last month's minutes was waived.

#### TREASURER'S REPORT: (John Baker)

Petty Cash	-	99.21
Checking	-	710.32
Money Market	-	<u>3607.11</u>
Total Monies	-	\$4410.64

Annual dues are \$10 - single, \$15 - family. For payment by mail, please include a self-addressed envelope along with a signed club waiver (next to last page of the newsletter) and we will send you your membership card, good towards free gear rental and check-out of books at AMH. This card also tells trip leaders that you have a waiver on file and need not sign another one. PAYMENT OF DUES NOW will allow you to be a member until the end of 1989.

OLD BUSINESS: Todd Miner is looking for an MCA rep in regards to the proposed climbing wall, there will be a meeting on this Wednesday, October 26 at 5:30pm, Bldg. K, UAA.

NEW BUSINESS: According to John Baker, Paul Denkwalter of AMH is offering a special deal on Avalanche Beacons for MCA members. See article for more details. Paul can be contacted at 272-1811 for more info.\*\*\*\*\*Willy Hersman read the names of members who through one action or other offered their time and/or to the club in the past year and thus were selected to receive one of the club's patches. They all got a big hand, perhaps because almost everyone present got a patch, so it's kind of like patting oneself on the back.

As this was the annual meeting, the election of officers was held, John Lohff officiating. There seemed to be a problem pronouncing the name of one of our most active members, which may be why he was not elected. I know it's a hard one for those who have problems, here is a try: The name of this guy is Rick Maron. Most folks do actually pretty good with his first name, but his last name is a challenge, one can try this: Mare, just like the horse, once you can do that, go ahead and casually add a short N, just like this: Mare-N. See, you're doing pretty good already. Elected were: John Baker, President Jerry Minick, Vice-President Peter Sennhauser, Secretary Vicki Jorgensen, Treasurer and to the Board, Tom Choate and Neil O'Donnell.

ANNOUNCEMENTS: John Baker mentioned that AMH has free plastic sleds to give away.\*\*\*\*\*Tim Neale informed us that the Attorney General's office seeks affidavits regarding access problems by the Millers to the Rabbit Lake area. As most of us know, they have recently blocked the road and are thus trying to make the Park Service buy the land for an outrageous price. He also encouraged folks to join the Center for the Environment and to buy raffle tickets.\*\*\*\*\*Rick Maron (here we go again, mare-N) discussed the map order.\*\*\*\*\*Rick also announced a couple of trips, Oct. 22 and Nov. 5.\*\*\*\*\*Michael Rees....4304 N. Henderson Rd. #102, Arlington, VA 22203, ph# 703-243-0280.

Ed Bovy was looking for photo enthusiasts who may want to show off their great shots at an exhibit, which is organized by the largest photographers club in the state and offers a \$250 first prize. They will have a potluck at Russian Jack on Oct. 22. Ed also had some of his great calendars for sale, get them while you can.\*\*\*\*\*John Baker passed on that Harriett, up at Glacier Park Resort near the Matanuska Glacier, was not amused with the huge log in the fire pit, it smouldered throughout the day and was hard to remove. She further told John, who was there two weeks after that folks who want to get to the glacier in winter would still have to pay a fee for use of the road, etc. John has her phone #.\*\*\*\*\*There is good skiing at Lane Prospect.

Willy passed on to us that it was thirty years ago when a group of folks got together at Paul Crews' house and decided to form a mountaineering outfit, which is now the MCA.

Respectfully Submitted,  
Pete Sennhauser

#### MINUTES OF THE BOARD MEETING October 25

John Baker introduced everyone and went over the current status of the club in several areas. The honorary membership committee lags behind. The tax exempt status will require a hefty filing fee. A liability form for equipment was presented. Income for the year was down.

Much of the evening was spent discussing activities proposed for the hut committee. The new chairperson is Gretchen Reeve. Three proposals stand for a location of a possible new hut. Proposals will be closed as of the end of the year, with presentations to be made at the January meeting. Ways to raise funds for a hut were discussed, including t-shirts, mugs, donations of materials, ads, etc. Gretchen is looking for many able bodies to help out with the project.

Programs were discussed, with the feeling that more Alaskan shows are desirable. The December meeting will be a collection of members' slides, perhaps

five or ten each. The meeting won't be at the schoolhouse.

Hope was expressed for more activities, specifically for educational-type trips. There will be classes on avalanche beacons, ice climbing, crevasse rescue, snow shelters, telemark skiing, river crossings, orienteering, star gazing, bird identification, maybe rock climbing, maybe glacier travel, maybe wildflowers, maybe even an all women's trip. It depends on volunteers. The Scree was discussed, Willy Hersman to be the new editor, as well as Corresponding Secretary for the club. Marcy Baker will continue as Equipment chairperson and Allan Julliard as Librarian.

Respectfully Submitted,  
Pete Sennhauser

### International Summits Quiz #2

This one is on the Caribbean and Central America. Which country has the highest peak? Answers at the end of Scree . (Courtesy Tom Choate.)

1. Central America: A) Panama B) Nicaragua C) El Salvador D) Honduras E) Belize
2. Cent. and S. America: A) Guatemala B) Costa Rica C) Venezuela D) Panama E) Honduras
3. Cent. America and the Caribbean: A) Belize B) Cuba C) Puerto Rico D) Jamaica E) Nicaragua
4. Caribbean: A) Haiti B) Dominican Rep. C) Cuba D) Martinique E) St. Vincent
5. Caribbean: A) St. Christopher B) St. Lucia C) Guadalupe D) Trinidad E) Dominica



## **Alaska Center for the Environment**

**700 H Street, Suite 4 • Anchorage, Alaska 99501 • (907) 274-3621**

Dear Fellow Mountaineer:

Living in Southcentral, it's easy to take for granted the wide variety of great backcountry and wilderness areas available to us. Our future enjoyment of these areas relies on constant protection efforts. There is an organization, fortunately, working fulltime in your interest and now's the time to make your contribution to these efforts go twice as far. The Alaska Center for the Environment is the leading conservation organization working to keep your backcountry wild.

Issues the Center has worked on, and continues to work on: a) appeal of the State Park's decision to allow military training on Eklutna Glacier within Chugach State Park b) efforts in the past to designate non-motorized areas in the Hatcher Pass Management Area c) fought for protection of Tincan Mt. from a proposed downhill ski area d) taken the lead on addressing backcountry issues in Prince

William Sound and Denali State Park e) continuing to defend non-motorized use of Chugach State Park f) taking the lead on progressive legislation and will soon seek introduction of a State Wilderness Act, State Environmental Quality Act, and State Ecological Reserves Act.

The Center insures that backcountry users' viewpoints are heard by serving on groups such as the Eagle River Greenbelt Planning Team, Hatcher Pass and Eagle River Ski Resort Advisory Committees and the Friends of Chugach State Park Board. We're always there, ready to help when you need us. From now through the end of November, contributions for every new membership will be matched by the Alaska Conservation Foundation. Memberships start at only \$25. Thanks for your support.

Sue Libenson, Executive Director

#### AAC-Alaska Section Memberships Available

The American Alpine Club, Alaska Section is offering climbers a chance to join the section for only \$5.00. This would be a section-only membership, putting you on the mailing list and getting you involved without actually going through the usual application procedure to join the national organization. The AAC has been promoting an easier application and acceptance process anyway, in an effort to boost our numbers. This is a way to encourage people to get involved who might otherwise not consider themselves eligible, for whatever reason, to join the national AAC. Paul Denkwalter is the section chairman and is the one to contact, 272-1811, or stop by AMH.

#### History Corner

Willy Hersman

Since the MCA has reached its thirtieth year of existence, it might be interesting to list the officers for each decade of the past history of the club.

- 1958 Paul Crews, Pres.; Johnny Johnston, VP; Helga Bading, S/T; Erik Barnes, Larry Straley, BOD.
- 1959 Johnny Johnston, Pres.; Rod Wilson, VP; Helga Bading, S/T; Norm Pichler, BOD.
- 1960 Rod Wilson, Pres.; Howard Schock, VP; Lois Willard, S/T; Hans Metz, BOD.
- 1961 Howard Schock, Pres.; Gene Horning, VP; Mary Prescott, S/T; Johnny Johnston, BOD.
- 1962 Ed Fisher, Pres.; John Dillman, VP; Harriet Kiester, S/T; Tony Bockstahler, BOD.
- 1963 Gregg Erickson, Pres.; Dave DeVoe, VP; Vin Hoeman, S; Marie Lundstrom, T; Rod Wilson, BOD.
- 1964 Gary Hansen, Pres.; Ron Linder, VP; Dixie Piersen, S; Marie Lundstrom, T; Dave DeVoe, BOD.
- 1965 Ron Linder, Pres.; Gayle Nienhauser, VP; Helen Wolfe, S; Leo Hannon, T; Gary Hansen, BOD.
- 1966 Hans Van der Laan, Pres.; Frank Nosek, VP; Helen Wolfe, S; Steffen Magoe, T; Paul Crews, BOD.
- 1967 Frank Nosek, Pres.; John Wolfe, VP; Callie Van der Laan, S; Bob Hansen, T; Hans Van der Laan, BOD.
- 1968 Bob Spurr, Pres.; Nick Parker, VP; Karen Courtright, S; Tom Meacham, T; Bill Davis, BOD.



- 1969 Randy Renner, Pres.; Steve Hackett, VP; Margaret Wolfe, S; Dick Snyder, T; Frank Nosek, BOD.
- 1970 Steve Hackett, Pres.; Eivin Brudie, VP; Betty Ivanoff, S; John Samuelson, T; Randy Renner, BOD.
- 1971 Wendell Oderkirk, Pres.; Tom Meacham, VP; Kathy Gorham, S; Pat Freeny, T; Frank Nosek, Marie Lundstrom, Randy Renner, John Samuelson, BOD.
- 1972 Tom Meacham, Pres.; Bill Barnes, VP; Dona Agosti, S; Gil Todd, T; Wendell Oderkirk, Bob Spurr, BOD.
- 1973 Bill Barnes, Pres.; Gil Todd, VP; Dona Agosti, S; Steve Jones, T; Tom Meacham, Bill Stivers, JoAnne Merrick, BOD.
- 1974 Al Worland, Pres.; Raj Bhargava, VP; Nina Faust, S; Kit Kenney, T; (Fritz Rieger finished Al's term beginning in Dec.)
- 1975 Bill Stivers, Pres.; Paul Denkwalter, VP; Shawn Oxford, S; Kit Kenney, T; John Pinamont, Fritz Rieger, Bill Barnes, Terry Reese, BOD.
- 1976 Tom Meacham, Pres.; John Pinamont, VP; David Newcombe, S; Jan Lemke, T; Bill Quirk, Terry Reese, Paul Denkwalter, BOD.
- 1977 Paul Denkwalter, Pres.; Valerie LaRue, VP; Al Robinson, S; Pierce McIntosh, T; (Valerie finished Paul's term beginning in June)
- 1978 Valerie LaRue, Pres.; Craig Renkert, VP; Al Robinson, S; Pierce McIntosh, T; Meg Leonard, Tim Neale, Dave Klinger, Dick Thaler, BOD.
- 1979 Tim Neale, Pres.; Mike Richardson, VP; Al Robinson, S; Paula Quering, T; John Dillman, John Lohff, Dave Pahlke, Meg Leonard, BOD.
- 1980 John Lohff, Pres.; Jim Eason, VP; Madeline Jones, S; Paula Quering, T; John Nevin, Pete Sennhauser, John Dillman, BOD.
- 1981 John Dillman, Pres.; Rick Severn, VP; Sandy McDonald, S; Reggie Buchanan, T; Tim Neale, Jim Eason, John Nevin, Pete Sennhauser, BOD.
- 1982 Rick Severn, Pres.; Ernie Borjon, VP; Bernie Helms, S; Reggie Buchanan, T; Mark Findlay, Graham McDonald, Tim Neale, Jim Eason, John Dillman, BOD.
- 1983 Mark Skok, Pres.; Tim Neale, VP; Eileen Cavanaugh, S; Bernie Helms, T; Rick Severn, Mark Findlay, Graham McDonald, Willy Hersman, Reggie Buchanan, BOD.
- 1984 Doug Van Etten, Pres.; Mark Findlay, VP; NanDe Good, S; Bernie Helms, T; Rick Severn, Mark Skok, Reggie Buchanan, Willy Hersman, John Lohff, BOD.
- 1985 Mark Findlay, Pres.; Willy Hersman, VP; Kathy Burke, S; Laurie Daniel, T; Doug Van Etten, Barb Byrne, John Lohff, Mike Miller, Ron Van Bergeyk, BOD.
- 1986 Mark Findlay, Pres.; Willy Hersman, VP; Marcy Baker, S; John Baker, T; Mike Miller, Ron Van Bergeyk, Michael Rees, Dan O'Haire, Bill Wakeland, BOD.
- 1987 Willy Hersman, Pres.; John Baker, VP; Pete Sennhauser, S; Priscilla Lukens, T; Michael Rees, Dan O'Haire, Mark Findlay, Mike King, Don Hansen, BOD.

## ALPINE ANIMALS - A SERIES OF NOTES

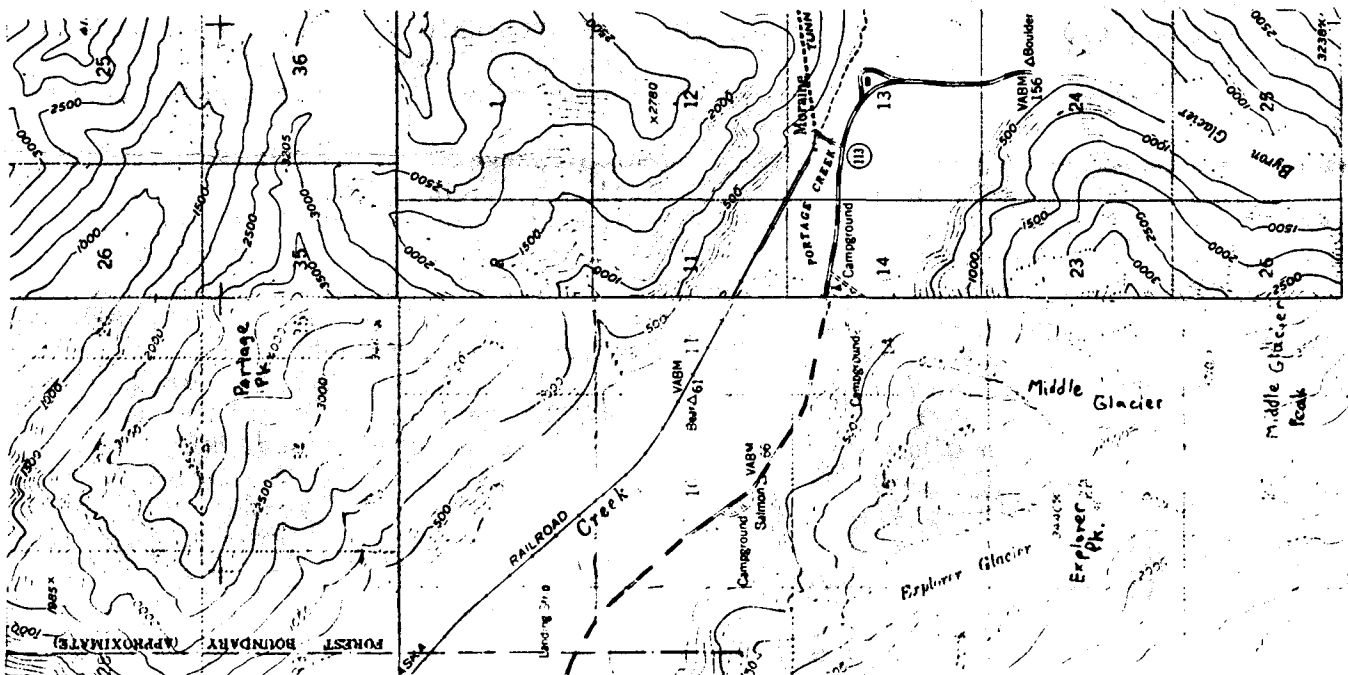
Tom Choate

### NO. 1 The Pika ( Ochotona collaris , the collared Pika)

Many of you have been walking in rocky areas in the Chugach or Talkeetna Mountains and been startled by and "eek" call which you couldn't locate. The Pika is restricted to rock piles (talus) which are stable and they prefer large blocks interspersed with alpine meadows. These small (7-inch, 5-ounce) rabbit-relatives are well-camouflaged and have ventriloquial alarm calls, so movement is your best way of spotting one.

When you hear the "eek", sit down where you have a view of the largest boulder tops and watch for a Pika to jump off one. Chances are good that they will be atop a "lookout" rock when calling. After waiting motionless for several minutes you may be privileged to watch one doing its famous "haymaking", especially in late summer. Pikas eat grasses and flowers on rocks to dry for winter food, since they do not hibernate like ground squirrels. Make a note of where you see them; scientists are not sure of their range in our mountains and they are territorial and often restricted to small parts of certain valleys. Let me know what you find.

### MAP TRIVIA



Quiz answers: 1. A) Volcan Baru (11400'), Honduras next: Las Minas (9347')  
2. A) Volcan Tajumulco (13845'), Costa Rica next: Cerro Chirripo (12530')  
3. D) Blue Mt. (7402'), Nicaragua next: Pico Mogoton (6913') 4. B) Pico Duarte (10417'), Haiti next: Massif de la Hotte (8773') 5. C) Soufriere (4813'),  
Dominica next: Morne Diablotin (4748').

### Release of Liability Agreement

I, \_\_\_\_\_, am aware that mountaineering sports (including rock, snow and ice climbing, mountaineering and ski mountaineering) are hazardous activities. I wish to participate and/or receive instruction in these activities with the Mountaineering Club of Alaska, Inc., ("MCA"). I have full knowledge of the dangers involved, and agree to accept any and all risks of injury or death that may occur.

\_\_\_\_\_ (initial that you have read this paragraph)

### Giving Up My Legal Rights

By signing this Agreement, I agree to give up for myself and for my heirs, certain legal rights which I may have in the event I become injured or killed while participating or receiving instructions in mountaineering sports with MCA. I am giving up my legal rights against MCA and my fellow participants in MCA activities. As used in this Agreement, the word MCA shall mean the Mountaineering Club of Alaska, Inc., and all of its leaders, instructors, guides, assistant guides, officers, and directors.

\_\_\_\_\_ (initial that you have read this paragraph)

### My Promise Not To Sue

I agree that I will not sue, or otherwise make any claim against MCA or my fellow participants in MCA activities for injury, death or damage to me or my property which occurs in the course of my participation or instruction in mountaineering sports.

\_\_\_\_\_ (initial that you have read this paragraph)

### My Release of Liability

I also agree to release and discharge MCA and my fellow participants in MCA activities from all actions, claims, or demands, both for myself and for my heirs, dependents, and/or personal representative, for injury, death or damage to me in the course of my participation or instruction in mountaineering sports.

\_\_\_\_\_ (initial that you have read this paragraph)

### My Promise to Indemnify

I agree to pay all costs and expenses, including attorney's fees and court costs, that MCA may incur as a consequence of any legal action arising out of injury, death or damage to me or to someone else as a result of my conduct.

\_\_\_\_\_ (initial that you have read this paragraph)

### My Consent to Medical Treatment

I consent to any hospital care or medical or surgical diagnosis or treatment which may be necessary as a result of my participation in activities with MCA. I also understand and agree I am solely responsible for all applicable charges for such medical treatment, including evacuation and/or rescue cost.

\_\_\_\_\_ (initial that you have read this paragraph)

I understand that the MCA requires that I execute this Agreement as a condition of participating in mountaineering sports with MCA. I also understand that all the terms of this agreement are binding upon me, my relatives, heirs, dependents, and/or personal representatives.

**I HAVE CAREFULLY READ THIS AGREEMENT AND FULLY UNDERSTAND ITS CONTENTS. I AM AWARE THAT THIS IS A BINDING, LEGAL AGREEMENT BETWEEN ME AND MCA AND I SIGN IT OF MY OWN FREE WILL.**

Dated: \_\_\_\_\_ Signature: \_\_\_\_\_

Signature of Parent or Guardian (if under 19): \_\_\_\_\_

Accepted for MCA by: \_\_\_\_\_ Dated: \_\_\_\_\_

# MOUNTAINEERING CLUB OF ALASKA OFFICERS AND BOARD MEMBERS

<u>TITLE</u>	<u>NAME</u>	<u>PHONE</u>	<u>BOARD MEMBERS</u>	<u>PHONE</u>
President	John Baker	274-0105	Mike King	694-4307
Vice-President	Jerry Minick	274-7389	Don Hansen	279-0829
Secretary	Pete Sennhauser	345-5577	Neil O'Donnell	274-5069
Treasurer	Vicki Jorgensen	243-4362	Tom Choate	333-5309
			Willy Hersman	338-5132

MCA TRIP HOTLINE 337-6679

Annual membership dues: Single \$10.00 Family \$15.00

Dues can be paid at any meeting or mailed to the Treasurer at the MCA address. Please sign and mail the club waiver found on the back of this page and include it and a self-addressed, stamped envelope to receive your card.

SCREE is a monthly publication of the Mountaineering Club of Alaska. Articles and notes submitted for publication and other communications related to the newsletter should be mailed to my address at Box 141666, Anchorage, Alaska 99514. Articles should be received by the 25th of the month for the following month's issue.

Paid ads may be submitted to the attention of the Vice-President at the club address and should be "camera-ready" and pre-paid. Your cooperation will be appreciated. Willy Hersman, Editor.

EDITOR: Willy Hersman

DUPLICATION: Mark Findlay

MAILING: P. Berryhill, D. Willworth