



MOUNTAINEERING CLUB OF ALASKA

BOX 102037

ANCHORAGE, ALASKA 99510

OCTOBER 1988

Volume 31, Issue 10

### OCTOBER MEETING

The 30th annual meeting of the MCA will be held Wednesday, October 19th, 7:30 pm, at the Pioneer Schoolhouse, top floor, 3rd and Eagle Sts., downtown Anchorage. After elections of new officers, there will be a gear swap. Bring in all your unneeded climbing, skiing and hiking gear and your checkbook for some potentially good deals. This is a good time to renew your membership, too.

### HIKING AND CLIMBING SCHEDULE

- Oct. 22 SKI MOUNTAINEERING/TELEMARKING  
This trip will involve hiking up to the new snow at higher elevations in the Girdwood area, exact location depending on conditions (possibilities are glaciers above Crow Pass, ridgelines above Virgin or California Cr.). Avalanche safety equipment required. Glacier travel experience may be required depending on location. 5000' elevation gain. Class C.  
Leader: Rick Maron 349-3064
- Nov. 5 SKI TOUR  
Details at October meeting.  
Leader: Rick Maron 349-3064
- Dec. 17-18 FLATTOP SLEEPOUT  
Winter solstice sleepout held every year. Be prepared for cold and high winds and possible avalanche hazard. More details at December meeting. No leader usually designated. Class A.
- 21 MOONLIGHT SKI  
Details later.  
Leader: Rick Maron 349-3064

The Hiking and Climbing Committee is always looking for leaders. If you have an idea for a trip, whether for an afternoon or for several weeks, give Kathy Burke a call at 346-2841. H and C Committee: K. Burke, Chairperson, B. Wakeland, D. Hansen, M. Bassett, W. Hersman.

### MINUTES OF THE SEPTEMBER MEETING

The meeting, was held at the Pioneer Schoolhouse on September 21st, and called to order by the President at 7:55pm. The reading of the August minutes was waived. New members were welcomed.

## TREASURER'S REPORT:

Petty Cash	-	99.26
Checking	-	441.12
Money Market	-	3594.22
Total Monies	-	\$4134.60

Annual dues are \$10 - single, \$15 - family. For payment by mail, please include a self-addressed envelope along with a signed club waiver (next to last page of the newsletter) and we will send you your membership card, good towards free gear rental and check-out of books at AMH. This card also tells trip leaders that you have a waiver on file and need not sign another one. PAYMENT OF DUES BEGINNING OCTOBER 1st will allow you to be a member until the end of 1989.

COMMITTEE REPORTS: Training - Paul Denkwalter. Paul gave the rundown on the upcoming Ice Climbing Class, an annual event which takes place at the Matanuska Glacier every last weekend in September.\*\*\*\*\*Hiking and Climbing - Kathy Burke. Kathy pointed out the sign-up sheets for both the Ice Climbing Class and a trip to Crow Pass with an outside chance for skiing. Both were overnights. A mountaineering day trip was announced for October 22, and a ski trip for November 5. Leaders for the weekends of Oct. 15 and 29 were sought.\*\*\*\*\*Hut Committee - Jerry Minick. Proposals in writing for new hut locations are still being accepted. Two submitted so far: The Bomber Glacier and the Matanuska Glacier. He threatened to close the deadline for proposals soon, so you folks with wild ideas will have to hurry up.

OLD BUSINESS: Dave Pahlke asked about the fate of the Mint Glacier Hut, as regards the porcupine and marmot damage. In the process the membership approved that \$100.00 be appropriated to put aluminum siding on the hut.\*\*\*\*\*Willy Hersman encouraged members to get familiarized with the club phone recorder. If there is any question about its operation call Mark Findlay at 337-8666, it's at his house and he just loves to talk about it. Actually, this is a fine way to keep in touch with snow conditions, come winter. Folks can leave messages about avalanche conditions, etc.

NEW BUSINESS: Willy pointed out that folks should consider running for an office in the October elections and that nominations are open. People nominated at meeting time were: John Baker- president, Jerry Minick- v. pres., Gretchen Reeve- board, Pete Sennhauser- secretary.\*\*\*\*\*Todd Miner mentioned that a climbing wall is in the planning or even in the making and will be open to the public, if the public helps endorse the project. He asked for ideas as to how to build and approach the idea further. A motion was passed to send a supporting letter to Ak. Wilderness Studies, Attn. Todd Miner on behalf of the wall.

ANNOUNCEMENTS: Rick Maron discussed the mass map order.\*\*\*\*\*Todd announced an equipment swap at the University, Oct. 14, 5-8pm. You can bring and sell gear or look and buy, or just look. On the same date a couple of climbing films will be shown - El Capitan and On the Rocks.\*\*\*\*\*For October 8 a field trip to the proposed Eagle River, South Fork ski area is in the making. Pete Murphy will lead that one, hoahoa.\*\*\*\*\*The MCA gear swap will take place after the elections at the October meeting, bring your old junk and try to find a sucker.\*\*\*\*\*Allan Julliard announced that the Screees had been dropped off at the Loussac Library, Alaska Section. The most recent five years were recently bound and one copy given to Allan at the meeting for the Loussac. The other copy can be found at AMH.

\*\*\*\*\*On Oct. 4 at the Loussac Library a meeting will be held to discuss future use and plans for Denali State Park.\*\*\*\*\*The Nordic Ski Patrol is looking for members to help this winter. They patrol at Hatcher Pass, Turnagain Pass, the Ski Train. They train newcomers in first aid, mountain/glacier travel, etc.

Cris Rideout had a stimulating slide show on kayaking in SE AK, on what a real hut should look like and some real white water (snow) kayaking in sea kayaks. Thanks for a fun show.

Respectfully Submitted,  
Pete Sennhauser

#### OCTOBER ELECTIONS

The MCA is still looking for volunteers for all positions. Here are the nominations to date, all positions are for one year, except Board Member, which has a two-year term.

President -	John Baker	Board Member (2)
Vice President -	Jerry Minick	Tom Choate
Secretary -	Pete Sennhauser	Clare Lowber
Treasurer -	Vicki Jorgensen	Rick Maron
		Niel O'Donnell
		Gretchen Reeve
		(Mike King and Don Hansen have one year to go.)

#### HALF-PRICE MAPS

The October meeting will be the deadline for this year's MCA map order from USGS. By combining all of our individual map needs into one large order, we can qualify for a 50% discount (provided that the total order exceeds \$500 at full price). Bring your map list to the October meeting or (preferably) contact me with your order beforehand. Make checks payable to The Mountaineering Club of Alaska. Rick Maron 349-3064

#### Mountain Rescue Expense Fund

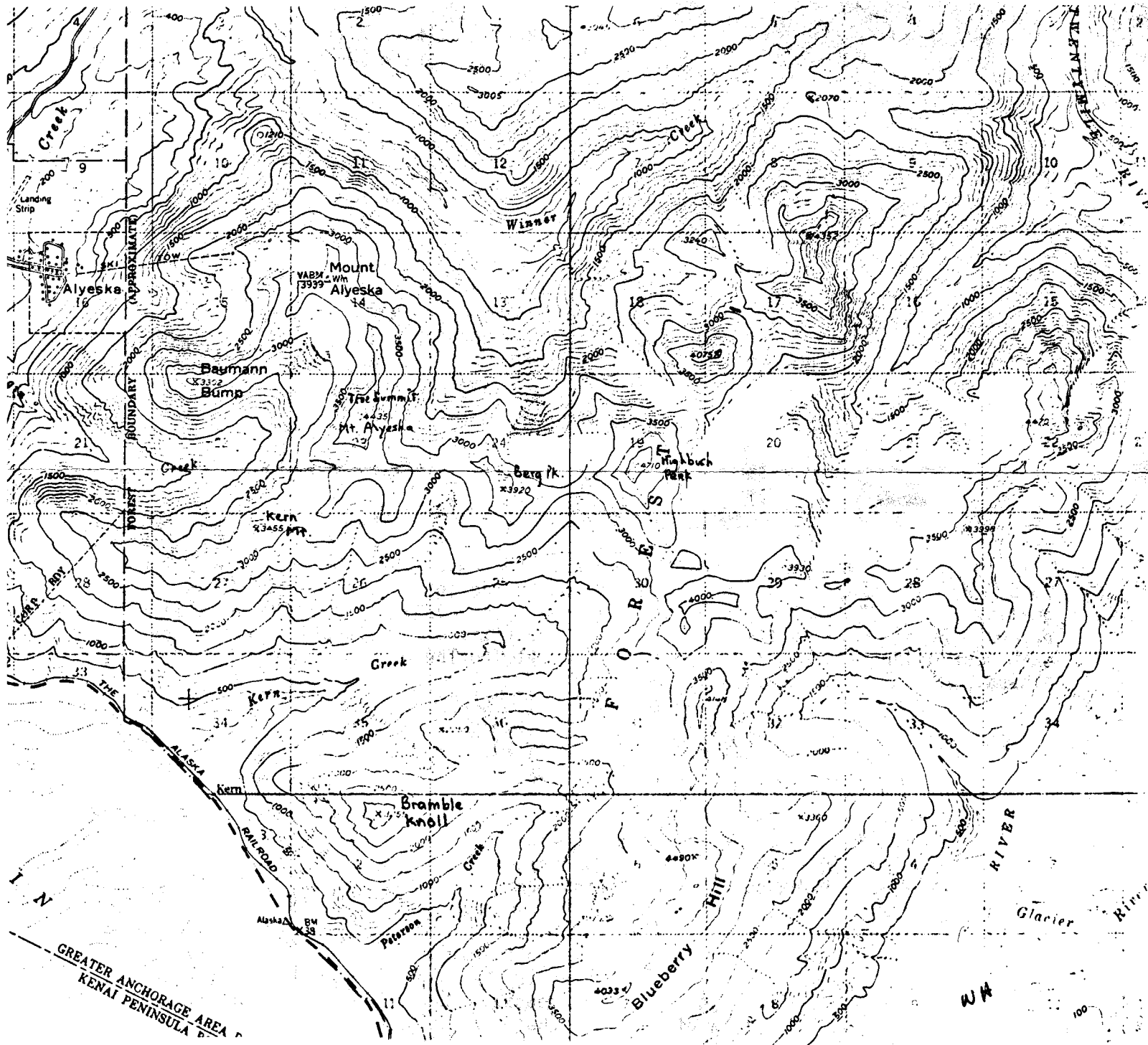
Normally not much is said about activities of other mountaineering clubs around Alaska. They do exist. Valdez, Juneau and Fairbanks are examples where mountaineers have organized into groups undertaking similar activities such as ours and have been doing so for many years. Perhaps someday there will be more communication between us.

The Alaskan Alpine Club, based in Fairbanks, and known more for its outspoken leadership than for its more positive activities has for many years sponsored something which deserves recognition. The Mountain Rescue Expense Fund is an attempt by climbers, cognitive of the fact that rescues are an expense which may best be paid for by those who participate in a risky sport, to provide a means to pay for their own rescue needs.

The fund provides money to help pay rescue organizations and public concerns

who participated in bona fide rescues of fund members. Twenty-five bucks will cover a fund member for a year. You might want to check it out. The Alaskan Alpine Club manages the fund and decides on what payments should be made. For more information: Alaskan Alpine Club, 3641 Sandvik, Fairbanks, Alaska 99709.

# MAP TRIVIA



Oct 88