



MOUNTAINEERING CLUB OF ALASKA

BOX 2037

ANCHORAGE, ALASKA 99510

June 1986

Volume 29, Issue 06

JUNE MEETING

The meeting will be held Wednesday, June 18th at 7:30 p.m. at the Pioneer Schoolhouse, 3rd and Eagle Sts., Anchorage. After the business meeting, Tom Choate will present a slide show of a trip which he did with Vin Hoeman, Dave Johnston and Cliff Ells in 1963...

traverse of Denali and the second ascent of Hunter.

MINUTES FOR THE MAY MEETING

The meeting was held May 21, 1986 at the Pioneer Schoolhouse, and was called to order by President Mark Findlay at 7:52 p.m. The reading of the minutes for April was waived.

The club welcomed new members and guests.

TREASURER'S REPORT

\$ 217.87 - Petty Cash
3,977.32 - Money Market Rate Plus Acc.
443.82 - Checking Account
\$4,639.01 - Total MCA Monies

I. COMMITTEE REPORTS

A. Hiking Committee

1. Anyone interested in the July Harding Icefield Ski Traverse should contact Dan O'Haire 248-3634 for info or to see maps.
2. A Glacier Travel Class (was) held June 1, with an indoor session on May 27. It (was) only open to members.

B. Hut Committee

1. There will be a Hut Repair trip in June to use the materials flown in earlier to repair the Whiteout and Eagle huts. See Eklutna - Girdwood Traverse listed on the hiking/climbing schedule.

II. OLD BUSINESS

None.

III. NEW BUSINESS

- A. A short discussion on meeting starting time concluded that the meetings will be starting closer to 7:30 instead of 8:00.

IV. ANNOUNCEMENTS

A. Mail

1. The club received, among other things, newsletters and info from Women of the Wilderness, Alaska Treks and Voyages, Alaska Div. of Parks and Outdoor Recreation (History and Archeology), Alaska Handicapped Sports and Rec., Climbing Magazine, Native Land Allotment, and weekly mountaineering summary sheet statistics on climbers in Denali. All of this (was) available on the front desk at the meeting.

- B. Mountain Travel offers an expedition to Antarctica. The 25-day expedition departs the U.S. in November and costs a mere \$19,000. Contact Mountain Travel, 1398 Solano Ave., Albany, CA 94706.

- C. Begich-Boggs Visitor Center (opened) May 24, and it was reported that the theater there is great.

- D. John Wegner is leading 3 trips into Denali National and State Parks. They range from 5-12 days and focus on natural history, flora, fauna, and ecology. Activities include backpacking and rafting. Contact ACC 786-1121 or Matanuska-Susitna Community Schools 745-4822, ext. 213.

- E. Soviet climbers from the U.S.S.R.-U.S. climbing exchange made it to the summit of Denali via the West Rib. Their ascent was only 2 days short of the record. A slide show (was) held by them on May 28 at Henshaw Jr. High (\$4 cost).

F. Contacting leaders for hikes/climbs

1. Be sure to use the sign-up sheets at the meetings for the various trips listed in Scree.
2. Any public announcement (via the media) of trips will exclude the meeting time so that anyone wanting to go will have to contact the leader first. This gives the leader some control on the size, skill-level, etc. of the group.
3. Mid-week hikes have started. There is no specific leader, just meet UAA at 6:00 p.m.

- G. Tenzing Norgay died of an illness at age 72. The club recognizes this loss to the climbing world.

H. Todd Shiplet is looking for an internal frame pack about 5000-6000 cu. in.
274-7101.

V. POLITICS

A. Matanuska Valley Moose Range Management Plan

1. Public meeting in Anchorage, May 21, Fish and Wildlife Bldg., 1011 E. Tudor.

B. Chugach National Forest

1. Wants input on the idea of commercial boat operations on Portage Lake near the face of the glacier. These commercial boats include large double-decker types, noisy hovercrafts or small boats. If boats are allowed then there will be docking and launching, restrooms, fuel and storage facilities and a road from Byron Glacier trailhead to the lake. Contact John Knorr 345-5700, Box 110469, Anch., AK 99511-0469.

C. Hatcher Pass Management Plan

1. Last public meeting June 5, West High Library, 7-10 pm, 1700 Hillcrest Dr. If you cannot attend the meeting then write or call your opinion. DNR, Box 7005, Anch., AK 99510. 762-2249.

Mark adjourned the meeting at 8:18.

Thanks to Bill Wakeland for another of his great slide shows. He gave us a good inside look at the stark and lush contrasting beauty of Katmai. I heard they changed the name to the Valley of 10,000 Smoking Blisters after that group got finished with it!

Respectfully Submitted,
Kathy Burke

ADZE

Anyone interested in getting another order in for topo maps, I am starting to get one together now. The U.S.G.S. offers a 50% discount on all orders over \$500 (at the regular price) which means we can get them for \$1.25 instead of \$2.50 each. Contact Willy Hersman, 338-5132.

TRIP REPORTS

Mt. Gerdine (11,258)

The two previous ascents of this beautiful peak took place from the eastern side. In 1963 a group consisting of Paul Crews, Sr. and Jr., Rod Wilson, George Wichman and Lowell Thomas, Jr. reached the summit on May 5th on the third try for a first ascent (see Scree 5:7:2). Five Japanese climbers made the second ascent in 1967 from the same side (see AAJ 16:42:122). The peak takes its name from Thomas Gerdine, a topographic engineer active in Alaska in the late 1800's.

On April 19 under clear skies Lowell Thomas, Jr. (the same!) landed Mike Frank, Jim Sprott, Tom Meacham and I on the Hayes Glacier at about 6000 feet. From here we set up camp above 7000 feet on the irregular ridge southwest of Mt. Gerdine.

On the 23rd we set out at 7:30 this time to traverse the bowl south of Gerdine to the South Ridge proper just north of Point 10,510. From here we climbed the South Ridge over several icy pitches to then traverse along the east side of Point 10,700 into the bowl east of the summit. Our route from here duplicated the original summit climb, and we reached the top just after 4 pm.

We had hoped to come down the SE Ridge and then traverse the bowl south of it back to the notch north of Point 10,510, but the ridge was very steep and icy so we ended up retracing our steps back to our trail above. Nightfall caught us high on the ridge rappelling over the ice chutes back to the South Ridge. From here we hiked back under a spectacular full moon to our campsite between 1 and 2 am. Lowell arrived later that morning to fly us back to Anchorage before the Augustine eruption that never occurred.

Greg Higgins

Penguin Peak (4305)

On 4/27 Jim Sprott and I struggled up over Point 3255 to the high point beyond at 4305 feet to prepare for the club "swim" up Byron the next day. This prominent avalanche ridge lies just west of the Alyeska bowl.

Little is known about early hikes on this ridge. Vin Hoeman found a cairn with soda pop cans on the top in 1966 (see Scree 8:11:1), and Dale Hagen led a club trip to at least Point 3255 in December 1963 (see Scree 6:3:3). The name is taken from the creek that runs to its north. Penguin Creek was in local usage in the 1800's and was recorded by Joseph Herron in his 1899 Cook Inlet explorations.

Greg Higgins

Marcus Baker and Mt. Grace

On May 19th Stuart Grenier, Tom Choate and I made an ascent of Mt. Marcus Baker via the standard route after landing with Lowell Thomas, Jr. on the Knik Gl. three days earlier. Another group of four from Anchorage were in at the same time and had difficulty with a more direct variation (over Peak 12207), which probably would have been a new route.

On May 21st we were still having incredible luck with the weather and decided to do another climb. In the Chugach there are several peaks cleverly named with a common first letter. One need not look far from Bold to see Bashful, Baleful, Benign, Bellicose and a host of others in the so-called "B" series. The "A" series, Amulet, Awesome, Alabaster are in the northwest Chugach. Above the Knik Glacier stand the "G" peaks: Goode, Gannett, Gilbert.

We skied across the Knik from base camp at 8400 feet toward Peak 10540, which is 2 1/2 miles east of Mt. Goode and only 70 feet shorter. The north ridge looked straight-forward enough, and after a liesurely climb, partly on ice, we stepped onto the narrow summit and enjoyed the windless day eating lunch and looking out over the Sound. It is a graceful-looking peak and we decided to name it Mt. Grace in honor of Grace Hoeman.

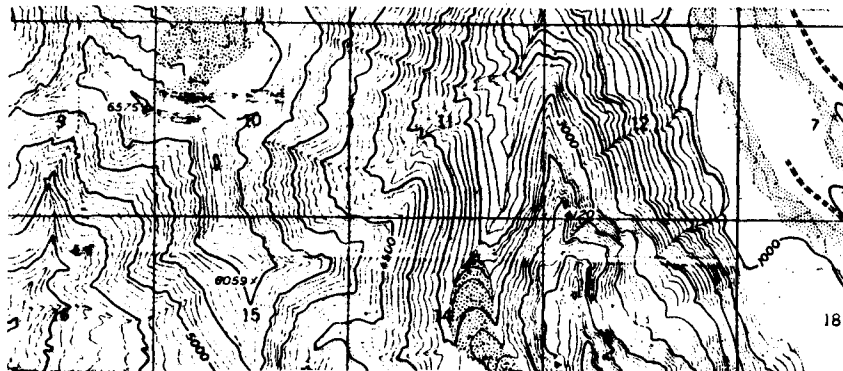
Willy Hersman

Bird Peak

A Scree article in June 1983 states that Bird Peak (5505) had only 3 recorded ascents. (First Ascent 1963, Hoeman, Johnston, Lewis). Mike Miller and I set out on May 27th to see what the climb was all about. We never saw the summit until we kick-stepped the last few yards along a cornice to discover that we were on top. It snowed, rained and hailed as we looked for the register (long gone) under a cairn and then headed down for a long, wet glissade. Surely, with Bill Babcock's home nearby, this peak has probably been done many times by the ACC climbing class. One deterrent to the climb might be the road to Penguin Cr.

Willy Hersman

Okay, a little map trivia here. Where on the Anchorage Quad is this? Answer in a later Scree.



HIKING AND CLIMBING SCHEDULE

- June 15 MT. EKLUTNA
4000' elev. gain, no trail. Map: Anch. B-7.
Leader: Tom Choate 333-5309
- 14-15 DEVIL'S PASS
20 miles, 1500' elev. gain; trail. A nice overnight trip to the
Resurrection Pass area. 55 ways #14. Map: Seward C-8. Meet 8
am UAA.
Leader: Bill Wakeland 563-6246
- 21 O'MALLEY PEAK
9 miles, 3000' elev. gain, trail part way. Map: Anch. A-7.
Leader needed.
- 20-27 EKLUTNA-GIRDWOOD TRAVERSE
Glacier trip and hut repair. Meet in Anchorage at 4 pm or so,
drive to Eklutna Lk. Hike around lake. Up on glacier next day;
stay in the huts each night. We'll do repairs and painting on
the Whiteout and Eagle Huts, bring old shirt and pants for that.
Some glacier experience necessary. Get details from leader on gear etc.
Leader: Willy Hersman 338-5132.
- 21-22 FLATTOP SOLSTICE SLEEPOUT
Leader not needed. Just show up. Keep eye out for the weather.
- 28 O'MALLEY, THE RAMP AND THE WEDGE
16 miles, 4500' elev. gain, trail part way. Map: Anchorage A-7.
55 ways #32. Meet 7 am UAA.
Leader: Jim Pommert 344-5656
- 28-29 REED LAKES
9 miles, 1900' elev. gain, trail part way. Map: Anch. D-6.
55 ways #44. Meet UAA 8 am.
Leader: Barb Byrne 338-5132
- July 13 SUMMIT CREEK-COLORADO CREEK
Leader: Jim Pommert 344-5656
- 12-13 MATANUSKA PEAK
Leader: Don Hansen/Bill Wakeland
- 19 CROW PASS
Leader: Eileen Cavanaugh
- 19-26 HARDING ICEFIELD TRAVERSE
Ski traverse of the icefield from Tustamena Lake to Exit Glacier
\$20-\$30 to cross lake in motorboat.
Leader: Dan O'Haire 248-3634
- 19-20 MILLS CREEK-BENCH LAKE-JOHNSON PASS TRAIL
Leader: Jim Pommert 344-5656

26 TWIN PEAKS TRAIL
Leader: Pat Thompson

27 PIONEER PEAK
Leader: Ron Van Bergeyk

26-27 LOST LAKE
Leader needed

Aug. 2 HOPE POINT
Leader needed

3 GULL ROCK
Leader needed

2-3 UPPER RUSSIAN LAKE
Leader needed

10 RABBIT LAKE
Leader needed

9-10 MT. WILLIWAW - TANAINA PEAK
Leader: Jim Pommert 344-5656

16 MCA PICNIC AT EKLUTNA LAKE CAMPGROUND

17 EAST TWIN PEAK
Leader needed

23 CRESCENT LAKE
Leader: Don Hansen

23-24 CASTLE MOUNTAIN
Leader needed.

30-1 PETERS CREEK CLIMBS
12 miles in, climb Peeking (6925), Raina (6798), Pleasant (6425)
12 miles out, non-technical but must be in good physical
condition, ice axe required for Pleasant Mt., many blueberries
meet UAA 7:30.
Leader: Willy Hersman 338-5132

30-1 INDIAN CREEK PASS - EAGLE LAKE
Leader needed

30-1 LOST LAKE
Leader needed.

Sept. 7 ROUNDTOP AND BLACKTAIL ROCKS
Leader needed

The hiking committee is seeking suggestions and leaders for week-long, weekend, and day trips. Contact: Jim Pommert 344-5656 work: 563-3583; Jane Stammen 563-7703; or Linda White 274-4989, or Kathy Burke 346-2841.

MIDWEEK HIKES

No leader designated for these hikes. Meet at 6 pm at UAA or call one of the hiking committee people.

June	10	<u>Near Point</u>
	12	<u>Falls Cr. Trail</u>
	17	<u>The Dome</u>
	19	<u>Petersen Creek</u>
	24	<u>Indian Cr. Pass</u>
	26	<u>Rabbit Lake</u>
July	1	<u>Bird Ridge</u>
	8	<u>Deep Lake</u>
	10	<u>Powerline Pass</u>
	15	<u>Flattop</u>
	17	<u>Rusty Point</u>
	23	<u>Eagle River Trail</u>
	29	<u>Near Point</u>
	31	<u>Falls Cr. Trail</u>
Aug	5	<u>Rendezvous Peak</u>
	7	<u>McHugh Cr. Trail</u>
	13	<u>Indian Ck. Trail</u>
	19	<u>Bird Ridge</u>
	21	<u>Johnson Trail</u>
	27	<u>Rabbit Lake</u>
Sept	3	<u>Flattop</u>

JUNE - JULY

S	M	T	W	TH	F	S
15	16	17	18	19	20	21
		THE DOME HIKE (MCA)	MCA 7:30 PIONEER SCHOOLHOUSE Slides of Denali, Traverse and 2nd Ascent Hike 1963	PETERSON (MCA) CREEK HIKE WHITEWATER RAFTING CLASS KNIK KANDERS + MIKE GRIZALVA 279-3185 REI 7:00 FREE FITNESS EVALUATION	MCA EKLUTNA - GARDWOOD TRVERSE 20TH - 29TH HUT REPAIR TRIP WILLY HEERSMAN 338-5732	MCA FLATTOP SASSICE SLEEPOUT JUST SHOW UP CLUTINA CANOE + KATK TRIP KNIK KANDERS + KATKERS 272-9351 TOLSONIA AND VOLCANOES A-SCOTCHAST 562-2577
22	23	24	25	26	27	28
		MCA INDIAN CREEK PASS HIKE	LOWER EAGLE RIVER CANOE, KATK, RAFT KNIK KANDERS + KATKERS 272-9351	MCA RABBIT LAKE HIKE REI 7:00 VOLKS MARCHING		MCA O'MALLEY, JIM POMBERT 344-5556 REED LAKES 388-5132 KATK CLINIC WOMEN OF WILDERNESS 688-2226
29	30	1	2	3	4	5
		MCA BIRD RIDGE HIKE	LOWER EAGLE RIVER CANOE, KATK, RAFT KNIK KANDERS + KATKERS 272-9351	FORTY MILE RIVER CANOE, KATK, RAFT KNIK KANDERS AND KATKERS JACK MOSBY 333-4442		NEVANA DOWNRIVER RACE KNIK KANDERS + KATKERS 272-9351 SYUTAK ISLAND KATK EXCURSION WOMEN OF THE WILDERNESS 688-2226
6	7	8	9	10	11	12
		MCA DEEP LAKE HIKE	WHITTIER - PORTAGE PASS WILDFLOWER HIKE VERNA PRATT 333-8212 LOWER EAGLE RIVER CANOE, KATK, RAFT KNIK KANDERS + KATKERS 272-9351	MCA POWDERLINE PASS HIKE REI 7:00 BIRDS OF ALASKA		MATANUSKA PEAK DEN HANSEN 279-0809 BILL WAKELAND 563-6246 TWIN PEAKS WILDFLOWER HIKE LUDDEAN MARVIN 344-8177
13	14	15	16	17	18	19
MCA SUMMIT CRK-COLO. CREEK JIM POMBERT 344-5656 LITTLE SUSITNA RIV. CANOE, KATK, RAFT KNIK KANDERS + KATKERS 279-3185		MCA FLATTOP HIKE	MCA 7:30 PIONEER SCHOOLHOUSE	MCA RUSTY POINT HIKE REI 7:00 WILDFLOWERS OF ANCHORAGE - CIVIC CENTER AREA	ALACIER CLIMBING WORK SHOP WOMEN OF THE WILDERNESS 688-2226	MCA CROWPASS HIKE 337-1334 HARDING ICE FIELD TRVERSE DAN O'HARE 248-3634 TALLS CREEK-BENCH LAKE-JIM POMBERT 344-5856
EAGLE R. DOWNRIVER RACE MATT TANAKA 346-2044						

Climbing Notes

Stuart Grenier reports that he and Karl Swanson made the first winter ascent of Thunderbird Peak (6575) in January 86. They climbed the peak from Eklutna Lake. Thunderbird was first climbed in 1969 (G. Hoeman, L. Kramer). Karl also made several other winter ascents this year, including the second winter ascents of Polar Bear (6614) and Yukla (7535).

Vin Hoeman called it the "grand traverse" when they did the first crossing of the Harding Icefield in 1968, going from Homer, up the Fox River to gain access to the icefield via Chernof Glacier, and ending at the Exit Glacier (that's how it got its name). John Bauman reports on a grander traverse which he and Howell Powder and friends did this April. They skied from the Exit Glacier to Halibut Cove (you figure out the miles), where they flagged down a passing boat for a ride to Homer. Along the way they bypassed Truuli Pk. (highest on the Kenai at 6612') in favor of climbing Peak 6166, a first ascent. This peak is 9 miles straight south of Truuli (Section 35, Seldovia D-2 quad.)

History Corner

This month's slide show features a truly classic expedition done very much Alaskan style back in 1963. In July of that year Vin Hoeman got together with Dave Johnston, Cliff Ells and Tom Choate (who thumbed up from Montana) to do a climb of Denali (via the Muldrow). They hitched through the park to the Toklat Ranger Station and got a ride to Wonder Lake where the trip began.

At Denali Pass they intercepted the 7 members of the Harvard Mtn. Club who had just completed the first ascent of the Wickersham Wall (Denali's huge north wall). All together they put 10 people on the summit on the 19th of July. Vin and Dave Johnston then pulled out their tent and made camp on the summit. From the top of the continent the two witnessed a solar eclipse the next day!

Nine days later, minus Ells, they were in the middle of their climb of Hunter, which had only been done once before. Their route was from the south (pretty amazing if you've ever seen the mountain). Vin was leading along a heavily corniced ridge when the cornice gave way below his feet. Tom caught the fall in time as Vin watched the ice cascade and avalanche 3000' below. They went on to do the main summit as well as the Middle and South peaks, both firsts.

This trip did not end at Kahiltna Base either, no sir. They walked the long distance out to Petersville. On the way out they found out the hard way that some crevasses are filled with water!

(See Scree , Oct. 63)

Willy Hersman