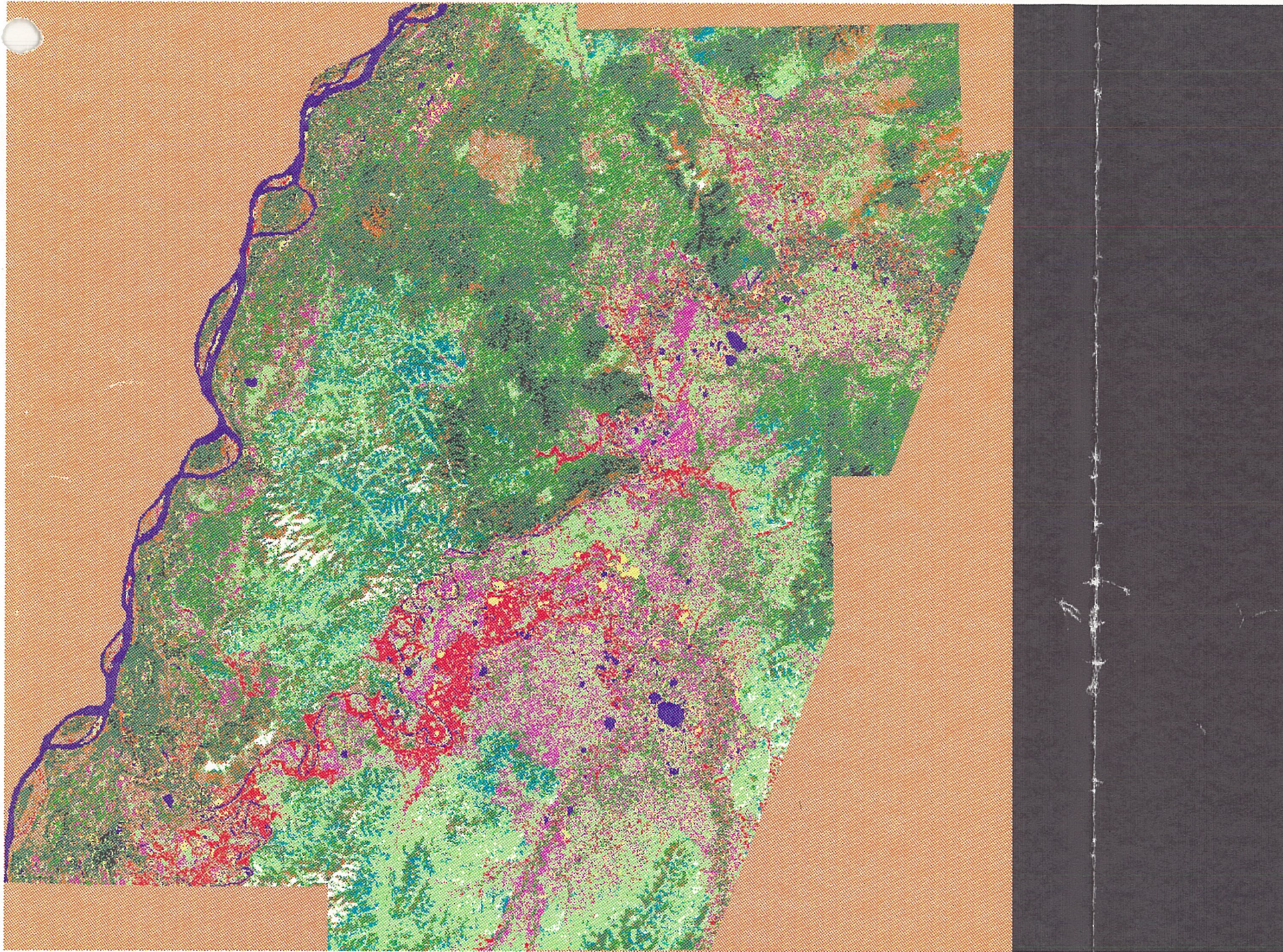


Figure F.2 Plant community map created using GIS and satellite imagery technology to translate plant community data. The map covers approximately 90% of the lower Innoko unit including the entire western boundary, the Yukon River.



snapshot:15:35:28.ps /home/spurr/minick/snapshot:15:35:28.ps printed on Thu Jan 06, 1994 at 15:35:39 by minick