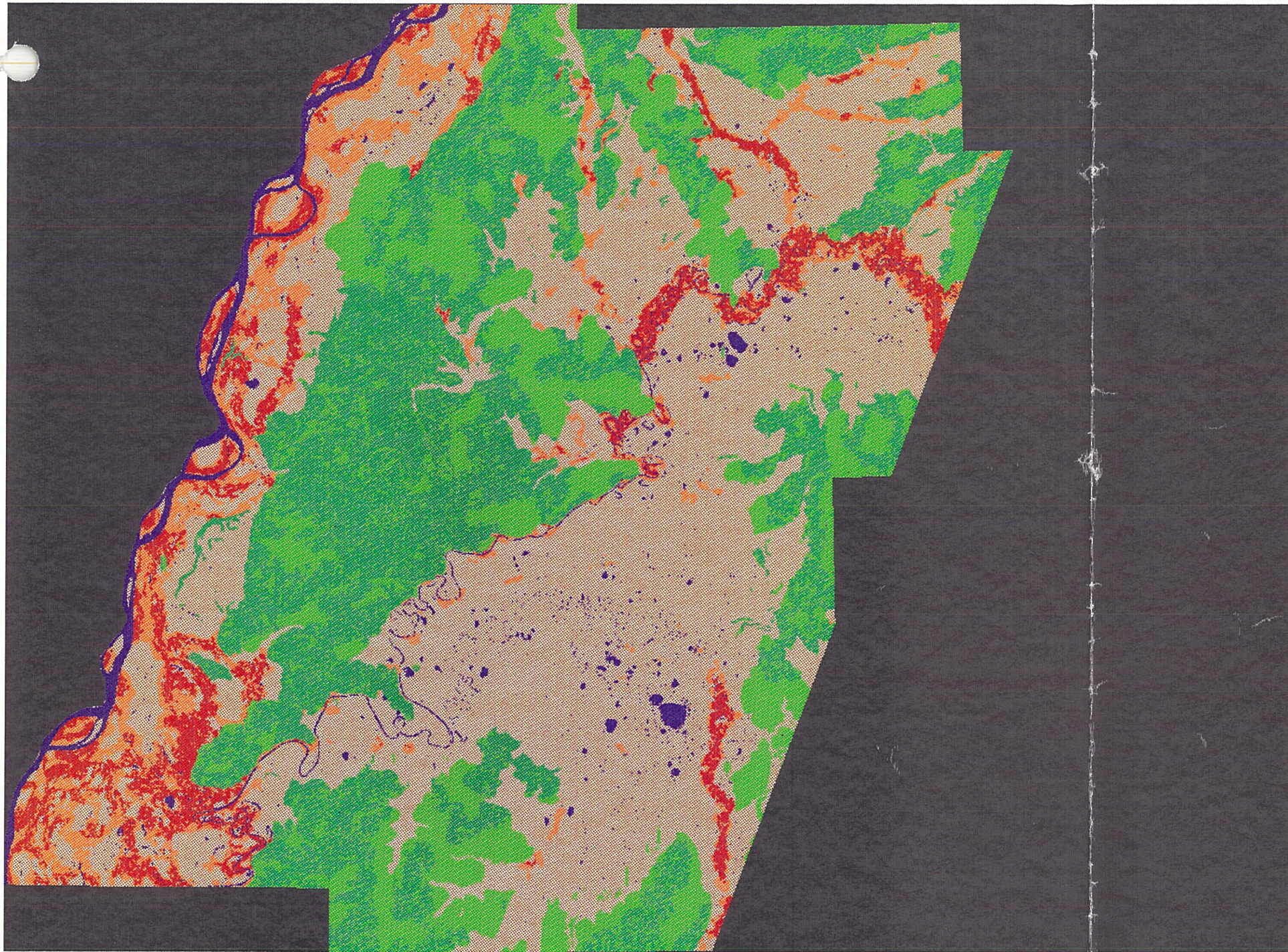


Figure 1.1 Critical winter moose habitat map created using GIS and satellite imagery technology to translate plant community and physical feature data. The red areas represent the most heavily used areas (primarily a complex of willows/spruce/blue joint meadows). The map covers approximately 90% of the lower Innoko unit including the entire western boundary, the Yukon River.



snapshot:11:25:25.ps /home/spurr/minick/snapshot:11:25:25.ps printed on Fri Jan 07, 1994 at 11:25:37 by minick