

# LAND AND WATER USE

Kevin Waring & Associates

February 2012

# Objectives

- ▣ Address Public and Private Lands and surface waters in the Bristol Bay and Cook Inlet drainages study areas
  
- ▣ Describe and map existing:
  - Ownership
  - Use
  - Management Status and Government Regimes:

# Methods

- ▣ Review and Analyze:
  - existing land use studies, plans, management documents
  - land records

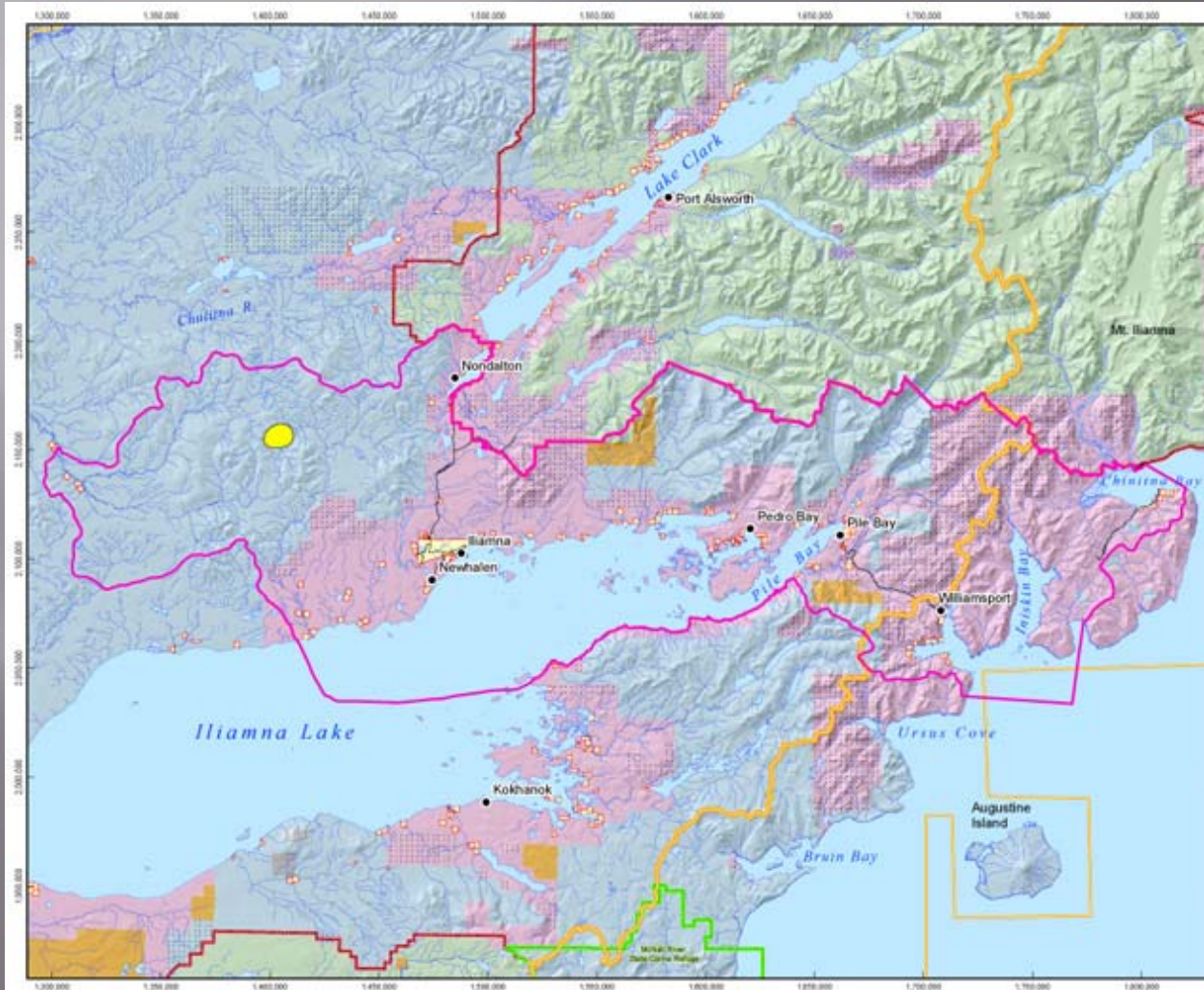
# Bristol Bay Drainages Study Areas

- ▣ Regional Study Area
  - Includes mine and transportation corridor study areas and surrounding areas
  - 14.4 Million Acres ( 22,526 square miles)
  - Communities of Igiugig, Iliamna, Kokhanok, levelok, Newhalen, Nondalton, Pedro Bay, and Port Alsworth
- ▣ Central Study Area
  - Confined to the three drainages in the vicinity of the Pebble Deposit
    - ▣ North Fork Koktuli
    - ▣ South Fork Koktuli
    - ▣ Upper Talarik

# Regional Study Area Land Owners

- ▣ Major Land Owners:
  - State Government
  - Federal Government
  - Alaska Native Claims Settlement Act village and regional Corporations
  - Borough and city governments
  - State Municipal Land Trustee Program
  - Alaska Native Allotment owners
  - Other private land owners
- ▣ Lightly Populated 1 person/9 square miles

# Land Ownership



## Legend



State lands



Native patent of conveyance



BLM



National Park Service



General Deposit Location



Study Area Boundaries

# Complexity of Ownership

- ▣ The pattern of land ownership and management is complex and multifaceted, with intermingled land ownership, still-pending land transfers, and overlapping federal, state, local, and private management regimes and activities.

# Federal Government

- ▣ National Park Service
  - Lake Clark National Park and Preserve
  - Katmai National Park and Preserve
  - Alagnak Wild River
- ▣ Bureau of Land Management
  - Unencumbered lands not in NPS or other agencies
  - Managed for multiple uses consistent with applicable protection measures

# State Lands

## Regional Study Area – Bristol Bay Drainages

- ▣ State is the major landowner of the study area
- ▣ Pebble Deposit/surrounding area on state lands
- ▣ All state-owned lands and state-selected lands in the study area are covered by the Bristol Bay Area Plan

# Bristol Bay Area Plan (BBAP)

- ▣ Governs management of most state land in Bristol Bay area
  - Establishes use categories
  - Pebble Deposit is on state lands designated for minerals use
  - Central study area does not include lands designated for recreation-related use
  - Nushagak and Mulchatna Rivers Recreation Management Plan is under umbrella of BBAP

# Bristol Bay Area Plan

- ▣ General Use – about  $\frac{3}{4}$  of state lands in the study area - over 4 million acres
- ▣ Recreational/Tourism Use – 790,000 acres
- ▣ Settlement – 300,000 acres
- ▣ Habitat – 200,00 acres
- ▣ Mineral (Includes Deposit Area) – 115,000 acres
- ▣ Various Other Combined – 13,000 acres

# Generalized Land Use Designations-BBAP

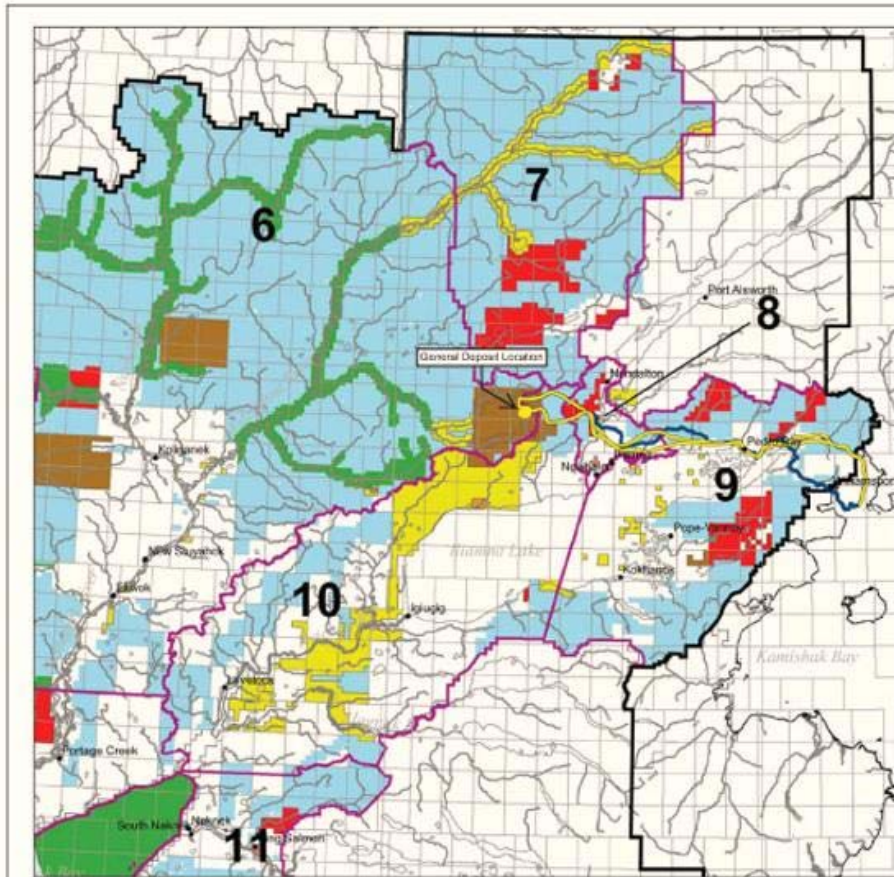

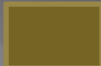





Figure 18-6. Generalized Land Use Designations for the Bristol Bay Drainages Regional Study Area  
Notes: Figure altered to show "General Deposit Location". The transportation corridors shown on figure a

## Legend

-  General Use
-  Habitat
-  Mineral Development
-  Public Recreation
-  Settlement
-  Plan Boundary

# Nushagak and Mulchatna Rivers Recreation Management Plan

- ▣ All lands are designated for recreation-related purposes
- ▣ Does not apply to:
  - Federal lands
  - Municipal lands
  - Private lands

# Lower Talarik Creek Special Use Area

- ▣ Managed by Alaska DNR
- ▣ For the purpose:
  - ▣ “enhancing the world class recreational rainbow trout fishery, protecting high value fish and wildlife habitat, and providing recreational opportunities for commercial and noncommercial users.

# State Easements/Rights of Way

- ▣ RS 2477 of Mining Act of 1866 granted public rights of way as land was transferred from the federal government to state or private ownership
  - Telaquana Trail
  - Igiugig Winter Trail
  - Katmai-Savonski Trail
  - Iliamna-Pile Bay Trail
  - Newhalen River Portage Trail
  - Cottonwood Bay-Old Iliamna Trail
  - Telaquana Trail-Nondalton Trail

# Local Governments

- ▣ Lake and Peninsula Borough
- ▣ Dillingham Census Area
- ▣ Bristol Bay Borough

# Lake and Peninsula Borough

- ▣ Lake and Peninsula Borough (L&PB)
  - L&PB owns land in upper Chekok Creek Valley (near Pedro Bay).
  - Has not adopted zoning authority
  - Requires permits of projects such as Pebble Project
  - Has severance tax that would apply to Pebble mineral production and gravel extraction

# Dillingham Census Area

- ▣ No borough government

# Bristol Bay Borough

- ▣ 90 miles southwest of the Pebble Deposit
- ▣ Comprehensive Plan adopted in 2006
  - Addresses economic development
  - No zoning or subdivision ordinances



# Local Communities

- ▣ Four lake-region communities in the study area
  - Iliamna
  - Nondalton
  - Newhalen
  - Pedro Bay
- ▣ Newhalen and Nondalton are 2<sup>nd</sup> Class cities
  - Have land use planning and regulatory powers
  - Have chosen not to exercise those powers

# ANCSA Regional and Village Corporations

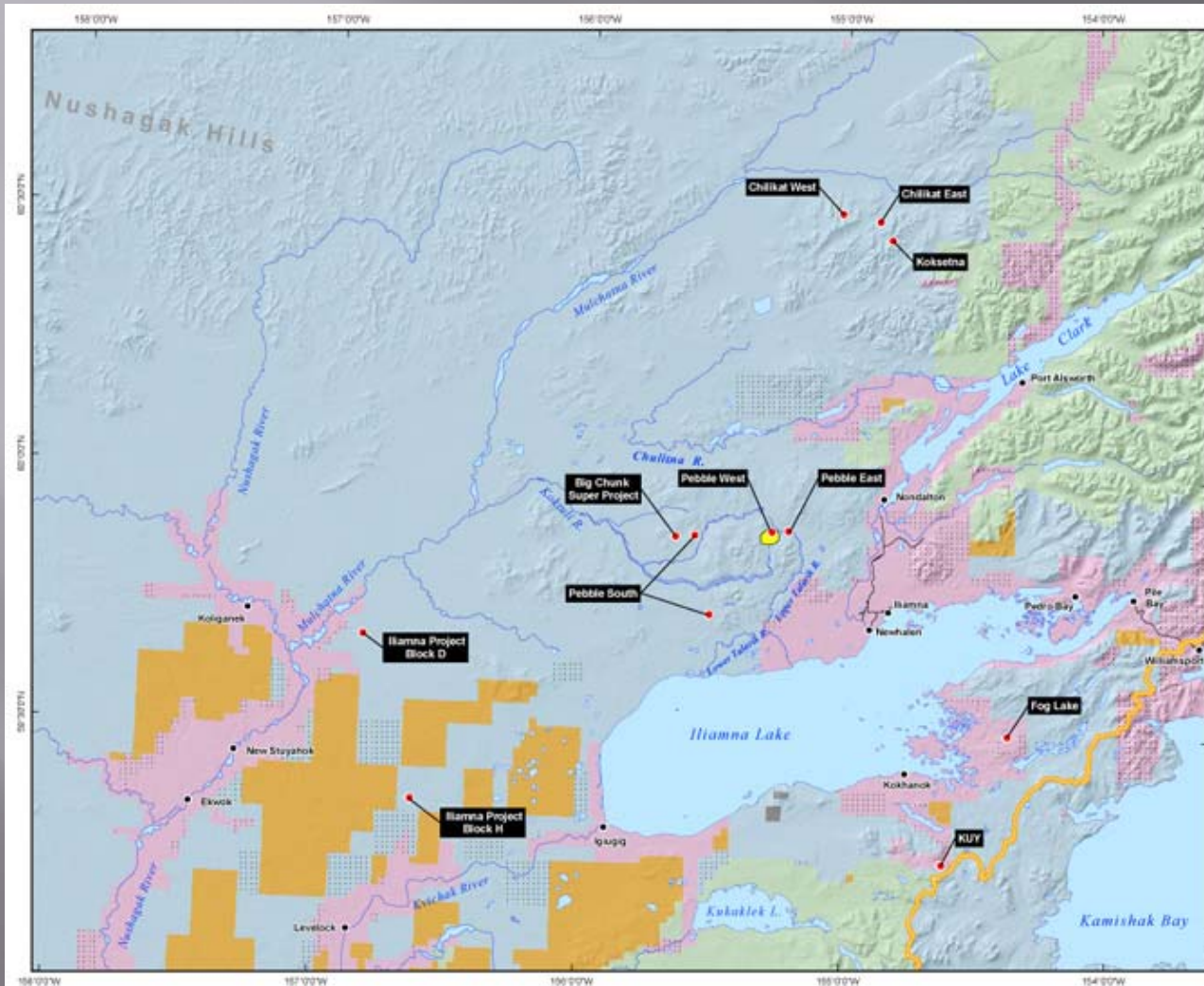
Largest private landowners in the area

- ▣ Most Bristol Bay Native Corp. land is outside of study area
- ▣ CIRI - no holdings in the Bristol Bay drainages study area
- ▣ 7 of 29 BBNC ANCSA Village Corporations in the study area
- ▣ Holdings of note:
  - ▣ Iliamna Natives Limited near Iliamna
  - ▣ Alaska Peninsula Corp. near Newhalen
  - ▣ Kijik Corp. near Nondalton and inholdings in Lake Clark NP&P
  - ▣ Pedro Bay Corp. in the transportation corridor study area

# Mining Claims/Exploration

- ▣ Many filed after findings from Pebble Deposit
- ▣ Active exploration include:
  - Pebble East and Pebble West (Pebble Partnership)
  - Pebble South (Full Metal Minerals)
  - Big Chunk Super (Liber Star Uranium and Metals)
  - Chilikat West/Chilikat East/Koksetna (Andover Ventures)
  - Iliamna Project Block D and H (TNR Gold)
  - Fog Lake (Andover Ventures)
  - KUY (Andover Ventures)

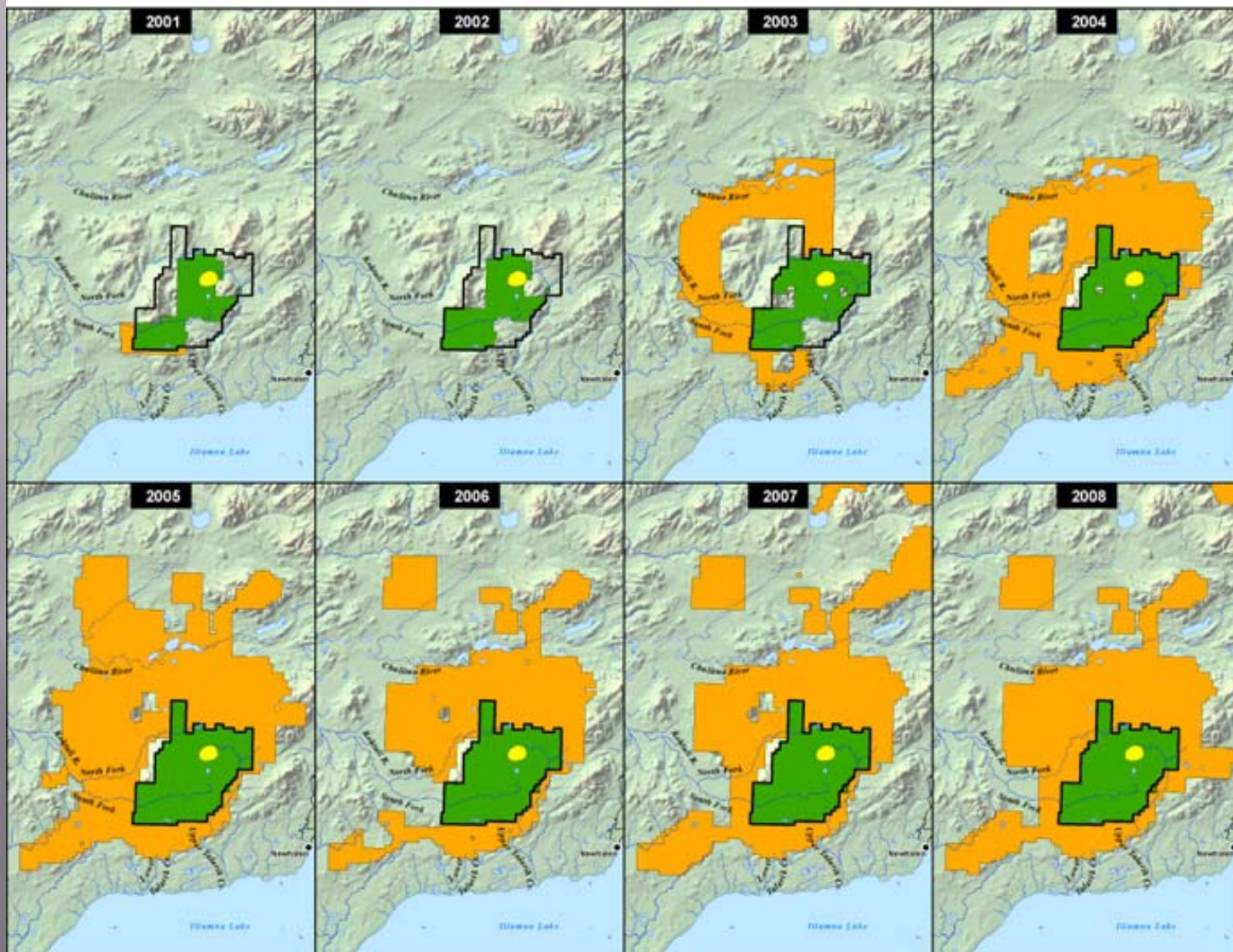
# Current Mining Activity



## Legend

-  General Deposit Area
-  Mining Exploration Property
-  State Land
-  Native patent or interim conveyance
-  BLM
-  National Park Service

# Active Mining Claims 2001-2008



Legend



General  
Deposit



Active  
Pebble block  
claims



Active non-  
pebble  
claims

# COOK INLET LAND AND WATER USE

EBD Chapter 46

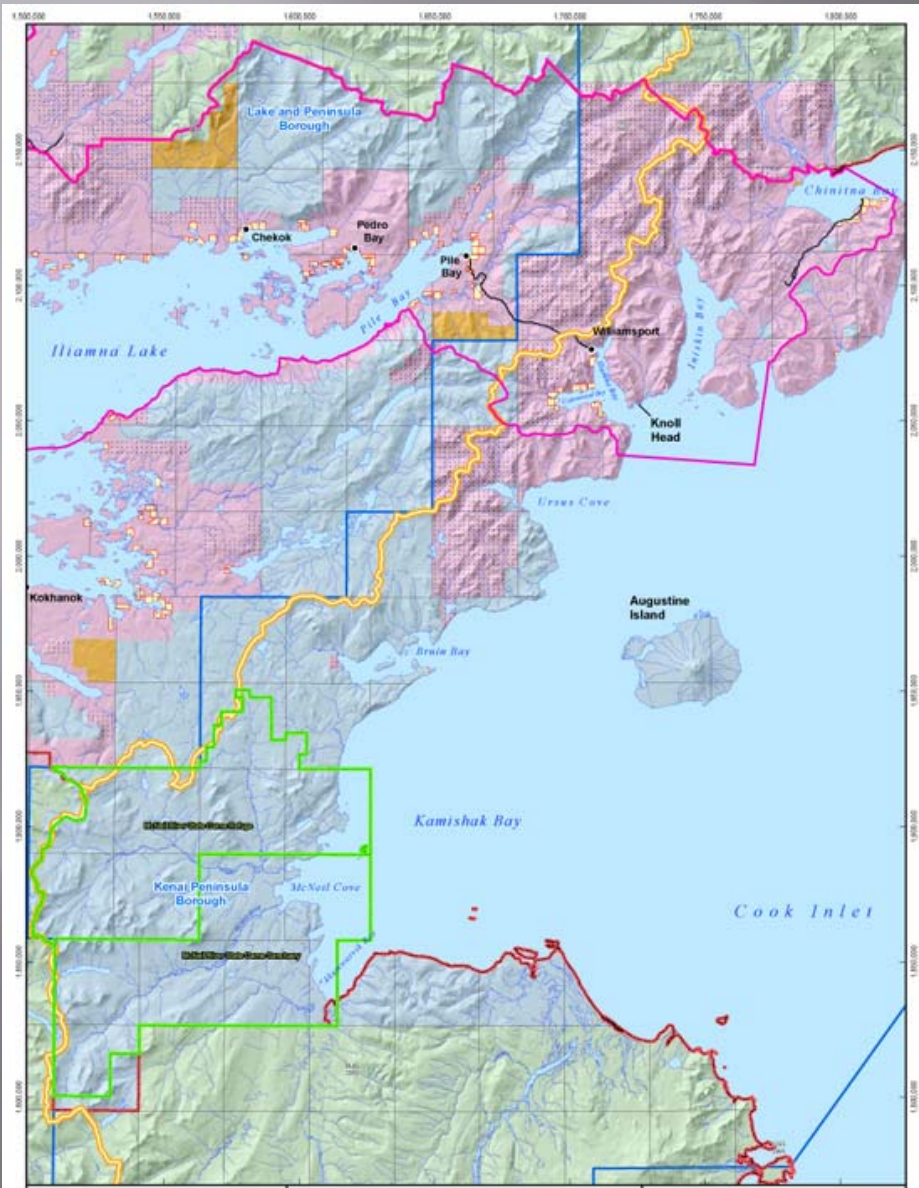
# Study Areas

- ▣ Regional Study Area
  - Coastal uplands between Lake Clark National Park and Katmai National Park
  - 577,280 acres of uplands (902 square miles)
  - 704,000 acres of tidelands and submerged lands (1,100 square miles)
  
- ▣ Central Study Area
  - Iliamna and Iniskin bays and surrounding uplands

# Regional Study Area - Land Owners

- ▣ State of Alaska - largest land owner
  - 345,000 total acres (539 square miles)
  - McNeil River State Game Refuge & Sanctuary (248,000 acres)
  - Most of the balance of state lands surround the Refuge and Sanctuary
  
- ▣ Regional and Village Native Corporations
  - 166,000 acres patent or interim conveyance
  - 64,000 acres selected/unresolved
  
- ▣ Alaska Native Allotments - 2,444 acres
  
- ▣ Bureau of Land Management - 182 acres

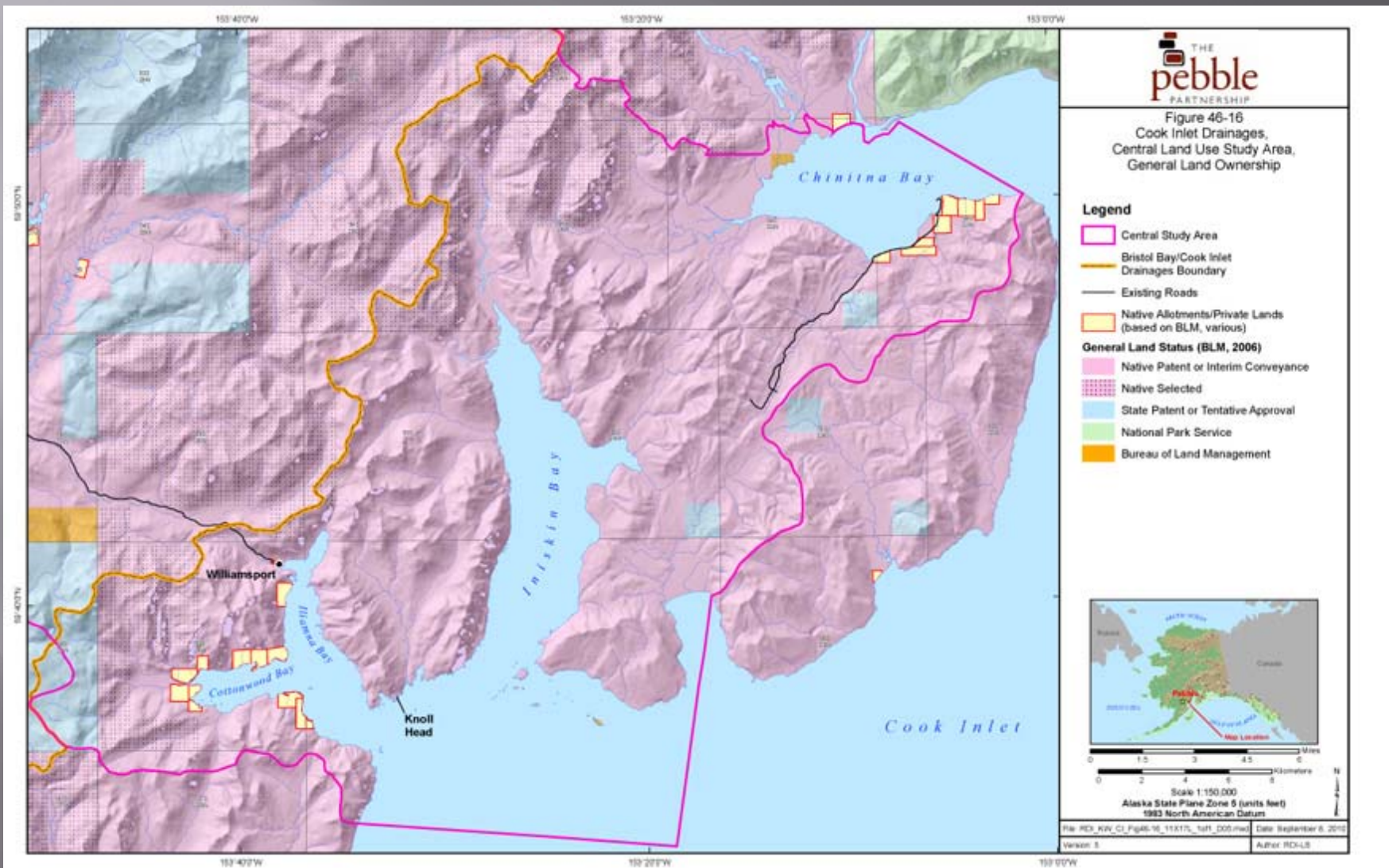
# Land Ownership-Cook Inlet



## Legend

-  State
-  Native Patent or interim conveyance
-  National Park Service
-  Bureau of Land Management
-  Private

# Central Study Area Ownership



# State of Alaska

## Kenai Area Plan

- ▣ Does not apply to non-state owned lands
- ▣ Not applicable in the Central Study Area
- ▣ Only affects a small part of the Regional Study Area
  - McNeil River State Game Refuge and Sanctuary
  - Kamishak Special use area - Augustine Island
  - Lake Clark Coastline Special Use Area
    - Tidelands in and adjacent to lake Clark NP&P and Tuxedni NWR between Tuxedni and Chinitna Bays

# McNeil River State Game Refuge and Sanctuary

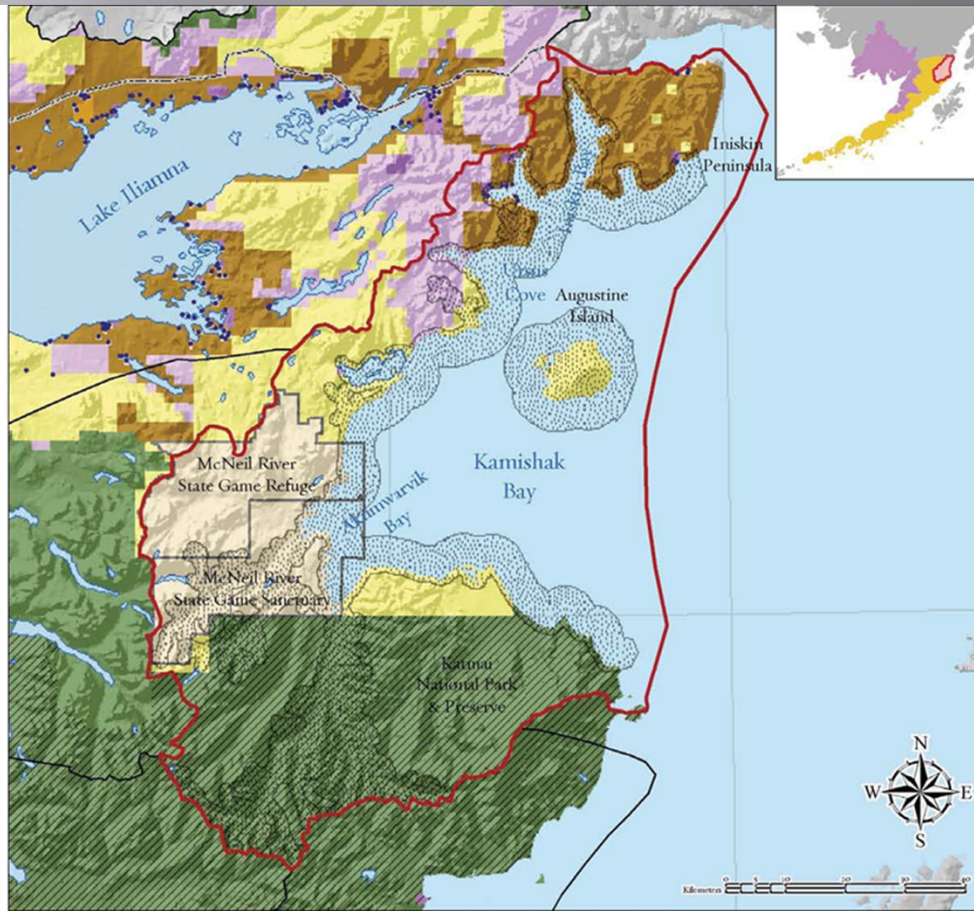
- ▣ Managed to provide permanent protection for brown bear and other wildlife, fish populations and their habitats
- ▣ Prime activity is wildlife viewing, mainly brown bear viewing



Photo - nps.gov

# Kamishak Special Use Area

- ▣ State parcels that partly overlap with McNeil River sanctuary and Katmai National Park
- ▣ Managed for wildlife habitat and harvest with public recreation as a secondary value
- ▣ The State of Alaska and National Park Service have had inconclusive discussions about trading Kamishak SUA lands to the Katmai National Park in exchange for other federal lands elsewhere.



**Kamishak  
Area of Biological Significance**

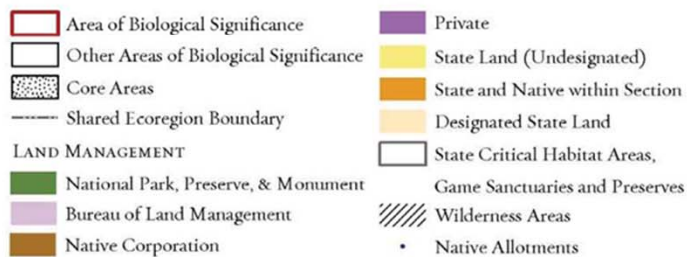
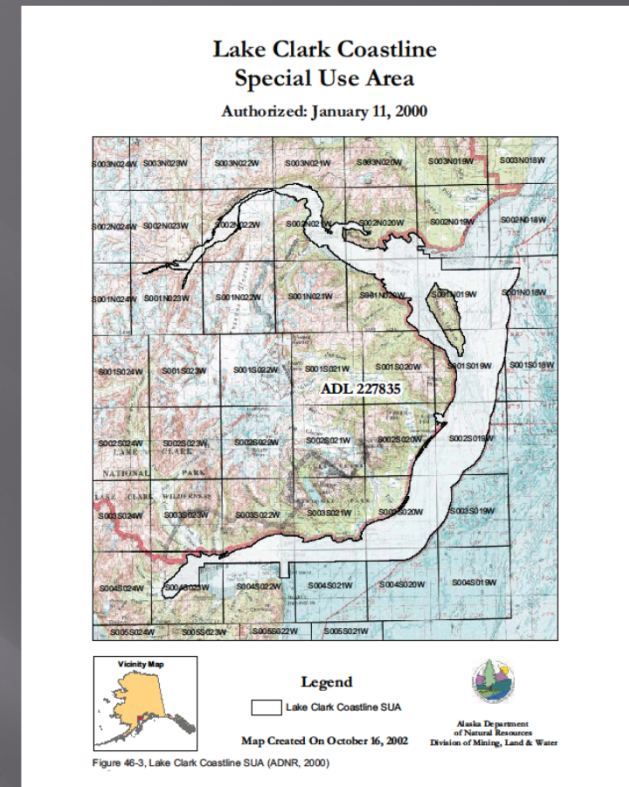


Figure 46-15, Kamishak Area of Biological Significance (The Nature Conservancy, 2004)

Map created by Shane T. Feltre, The Nature Conservancy in Alaska, September 2003

# Lake Clark Coastline Special Use Area

- ▣ Tuxedni Bay along the coast to Chinitna Bay
- ▣ Extensive tidelands adjacent to Lake Clark National Park
- ▣ Managed for brown bear, fish, seabird, and waterfowl habitat and breeding grounds.
- ▣ Outside of Central Study Area



# Kenai Area Plan-Cook Inlet Study Area

- ▣ Public Recreation – 591,000 acres of tidelands
- ▣ Habitat
  - 421,000 acres uplands
  - 221,000 acres of tidelands
- ▣ General Use – 26,000 acres of uplands
- ▣ Heritage – 22,000 acres of uplands
- ▣ Harvest – 7,000 acres of tidelands
- ▣ Other – approx 6,000 acres

# Federal Government

- ▣ Bureau of Land Management
  - Manages small amount of government land in the region
- ▣ National Park Service
  - Manages lands in Lake Clark and Katmai NP&P
  - Peripheral to study area
- ▣ US Fish and Wildlife Service
  - Alaska National Maritime Refuge
  - Includes several islands in the study area

# Kenai Peninsula Borough

- ▣ KPB Comprehensive Plan provides general planning functions in the study area
  - Nothing specific to Pebble Project
  - Notes ADOT&PF intent to improve port facilities at Williamsport and road to Pile Bay



# Private Lands

- ▣ Within Cook Inlet Region, Inc. land selection area
  - Own one parcel that is a site recommended by *Iliamna Regional Transportation Corridor Analysis* as a port site and road head
- ▣ Seldovia Native Association and Tyonek Native Corp. own lands in region