

Pebble Limited Partnership
Pebble Project

Agency Meeting
February 3, 2012

Subsistence & Traditional
Knowledge Studies

Stephen R. Braund & Associates
&
ADF&G Division of Subsistence



Purpose of PLP Subsistence Studies

- Establish a sufficient baseline description to characterize subsistence uses in the study area
- Inform project design



SRB&A Subsistence & Traditional Knowledge Studies: Two Parts

1. ADF&G Division of Subsistence Household Surveys & Reports
2. SRB&A Subsistence Use Areas and Traditional Knowledge (TK) Interviews & Report
 - Report = Environmental Baseline Document that incorporates ADF&G information
 - Individual community reports as appendices

Subsistence: Study Area

- Communities whose residents use the mine site, road, or port for the harvest of subsistence resources or who harvest resources that migrate through or utilize this area
- At broadest scale:
 - All communities in Lake Clark & Iliamna Lake areas and communities “downriver” from the mine study area (Nushagak & Kvichak rivers) – 20 communities
 - Aleknagik, Clarks Point, Dillingham, Ekwok, Igiugig, Iliamna, King Salmon, Kokhanok, Koliganek, Levelock, Lime Village, Manokotak, Naknek, New Stuyahok, Newhalen, Nondalton, Pedro Bay, Port Alsworth, Portage Creek, and South Naknek
 - Kenai Peninsula communities that may use Iniskin and/or Iliamna bay areas

Fieldwork Through 2011

- ADF&G Household Survey (18):
 - 2005: **Iliamna, Newhalen, Nondalton, Pedro Bay, Port Alsworth** (Technical Paper No. 302) (In collaboration with NPS)
 - 2006: **Kokhanok, Igiugig, Levelock, New Stuyahok, Koliganek** (Technical Paper No. 322)
 - 2008: Naknek, South Naknek, King Salmon, Lime Village (Review Draft)
 - 2009: Aleknagik, Clarks Point, Manokotak (Review Draft)
 - 2011: Dillingham
- SRB&A Subsistence Mapping & TK Interviews (18):
 - 2005-2007: **Koliganek, New Stuyahok, Ekwok, Portage Creek, Levelock, Igiugig, Kokhanok, Iliamna, Newhalen, Nondalton, Pedro Bay, Port Alsworth/North Shore Lake Clark**
 - 2008: Naknek, South Naknek, King Salmon, Lime Village
 - 2010: Aleknagik
 - 2011: Clarks Point (Dillingham fieldwork initiated in October 2011)

ADF&G HH Surveys

- ADF&G Division of Subsistence reports
 - Stand alone Technical Paper report from Division
 - Based on household surveys
 - Residency, employment, harvest amounts by resource, attempt to harvest, participation, give, receive
 - SRB&A is incorporating data into Pebble Baseline

Objectives of SRB&A Subsistence Use Areas and Traditional Knowledge Study

- Describe the role of subsistence in the study communities.
- Describe current and historic subsistence harvests.
- Describe current (10 years prior to each interview) and historic subsistence use areas.
- Describe local perceptions of areas important to the health and abundance of subsistence species.
- Describe local issues and concerns related to subsistence.
- Document Traditional Knowledge of patterns & changes in:
 - Resource Use
 - Abundance
 - Quality/Health
 - Distribution
 - Migration
- Establish and describe subsistence baseline indicators for the study communities that can be measured over time.

SRB&A Subsistence/Traditional Knowledge Interviews

- Coordinated through community/traditional councils
- Described project & explained benefits (information for environmental analysis & mitigation) & risks (unknown use of information)
- Hired local person for liaison as available
- Community/harvesters choose persons to interview
- Voluntary participation; paid honoraria
- Anonymity & confidentiality; aggregated data only

SRB&A Subsistence/Traditional Knowledge Interviews

- Focus on:
 - Active hunters - target
 - Retired hunters/elders who historically utilized the study area
- Multiple resources
 - e.g., caribou, moose, seals, wildfowl, fish, plants & berries
- Subsistence Use Areas – last 10 years
 - Months area used
 - Harvest Success
 - Times visited per year
- Harvest Season
- Travel Routes
- Camps & cabins



SRB&A Traditional Knowledge Interviews

- Areas important to health & abundance of resources (Identify them; Changes in Habitat)
- Changes in resource (incl. reasons for change)
 - Use
 - Abundance
 - Distribution
 - Migration
 - Quality/Health
- Issues and Concerns

SRB&A Subsistence & TK Interviews (18 Communities)

	Number of Households	Population	Number of Persons Identified for Interviews	Number of Interviews (people)	Number of Interview Workshops	Number of Interview Trips to Community
Aleknagik	NA	229	64	33	29	2
Clarks Point	NA	62	17	20	17	1
Ekwok	NA	118	29	23	18	2
Igiugig	13	41	16	15	13	3
Iliamna	22	73	21	15	11	2
King Salmon	NA	426	78	27	26	2
Kokhanok	42	158	63	40	30	2
Koliganek	42	150	40	25	15	1
Levelock	19	34	15	13	11	1
Lime Village	NA	48	17	9	6	1
Naknek	NA	543	139	51	43	2
New Stuyahok	96	421	58	43	31	2
Newhalen	31	125	32	21	16	2
Nondalton	43	164	67	47	37	4
Pedro Bay	21	69	16	13	12	1
Port Alsworth/LC	30	109	33	27	19	3
Portage Creek	NA	37	7	6	4	3
South Naknek	NA	66	29	20	18	1
Total	359	2,873	741	448	356	35

SRB&A Interviews: 2005-11

- Completed 448 interviews (18 communities)
 - **Koliganek, New Stuyahok, Ekwok, Portage Creek, Levelock, Iguigig, Kokhanok, Iliamna, Newhalen, Nondalton, Pedro Bay, Port Alsworth/North Shore Lake Clark, King Salmon, Naknek, South Naknek, Lime Village, Aleknagik, and Clarks Point**
- Multiple trips to several communities (1-4 trips each)
- Willing to return until community determines interviews accurately represent community subsistence use areas within last 10 years
- Sent each community a letter asking if adequate number of interviews had been conducted in their community

Number of Digitized Geographic Features by Feature Type and Community, 12 Communities

	Area Important to Health & Abundance	Cabin	Camp	Harvest Area	Key migration route	Travel Route	Travel route to other village	Other	Total
Ekwok	79	77	17	717	45	163	32	3	1,133
Igiugig	90	48	10	787	141	82	13	25	1,196
Iliamna	117	57	1	1,648	102	108	26	13	2,072
Kokhanok	397	80	20	3,324	188	236	54	51	4,350
Koliganek	97	118	6	1,085	128	93	35	41	1,603
Levelock	94	75	0	548	60	25	45	16	863
New Stuyahok	192	288	94	2,662	425	778	95	23	4,557
Newhalen	368	63	11	1,579	93	124	57	28	2,323
Nondalton	547	176	580	3,163	289	317	60	176	5,308
Pedro Bay	84	7	24	635	16	12	2	24	804
Port Alsworth	221	6	10	923	405	28	8	54	1,655
Portage Creek	42	7	1	236	26	29	7	7	355
Total	2,328	1,002	774	17,307	1,918	1,995	434	461	26,219

Resource Groups for Report

1	Caribou
2	Moose
3	Other Large Land Mammals (Black & Brown Bear, Sheep)
4	Furbearers & Other Small Land Mammals (porcupine & squirrel)
5	Seals
6	Other Marine Mammals (beluga, walrus)
7	Fish
8	Salmon (sockeye, incl. spawning, Chinook, coho, other salmon)
9	Non-Salmon Fish (Arctic grayling, burbot, dolly Varden/Arctic char Northern Pike, trout [lake, brook, rainbow, steelhead), whitefish (whitefish, broad, humpback), other fish [blackfish, candlefish, fish, halibut, herring, longnosed sucker, smelt, sheefish, sticklebacks)
10	Waterfowl

Resource Groups for Report (Cont.)

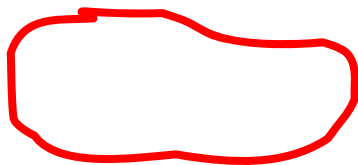
11	Upland Birds
12	Eggs
13	Berries
14	Plants
15	Marine Invertebrates

Number of Subsistence Use Areas by Resource (12 communities)

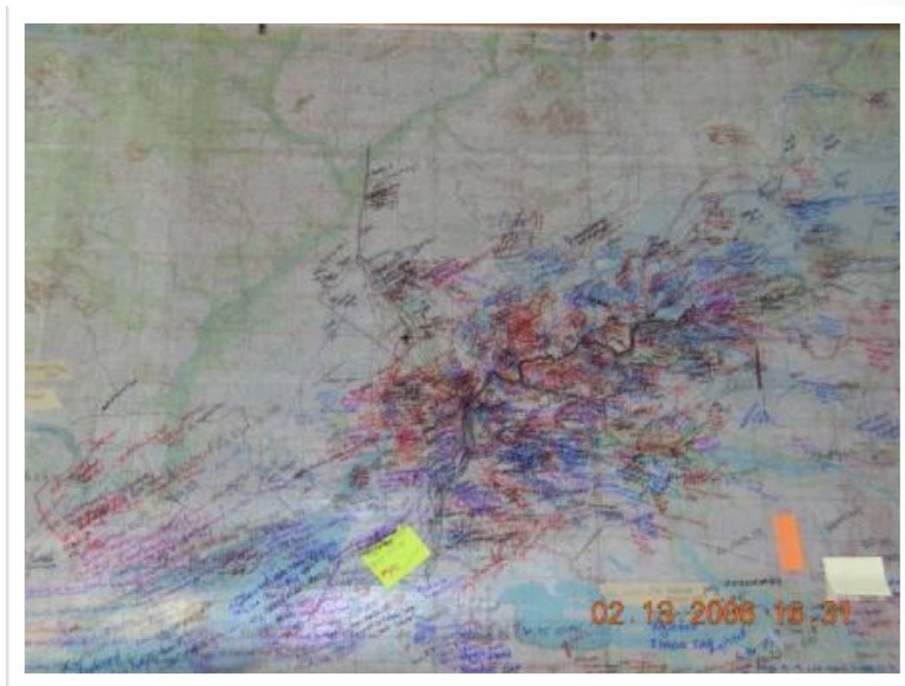
Caribou	684
Moose	730
Other Large Land Mammals	364
Furbearers and Small Land Mammals	1,261
Seals	178
Other Marine Mammals	27
Fish	5,156
Waterfowl	2,072
Upland Birds	475
Eggs	1,688
Berries	3,061
Plants	1,238
Marine Invertebrates	90
Total	17,048

Mapping Presentation Methods

- Digitize and have “spaghetti” map of polygons (closed figure) – points, lines, polygons
- Generally represent use area data as one polygon that encompasses all polygons



- “Overlapping” polygons (SRB&A)



**Subsistence Use Area Mapping -
Levelock: 11 Overlays**



Map 23-8 Dissolved Polygons Example, 12 Communities

 17,048 Use Areas
 283 Respondents

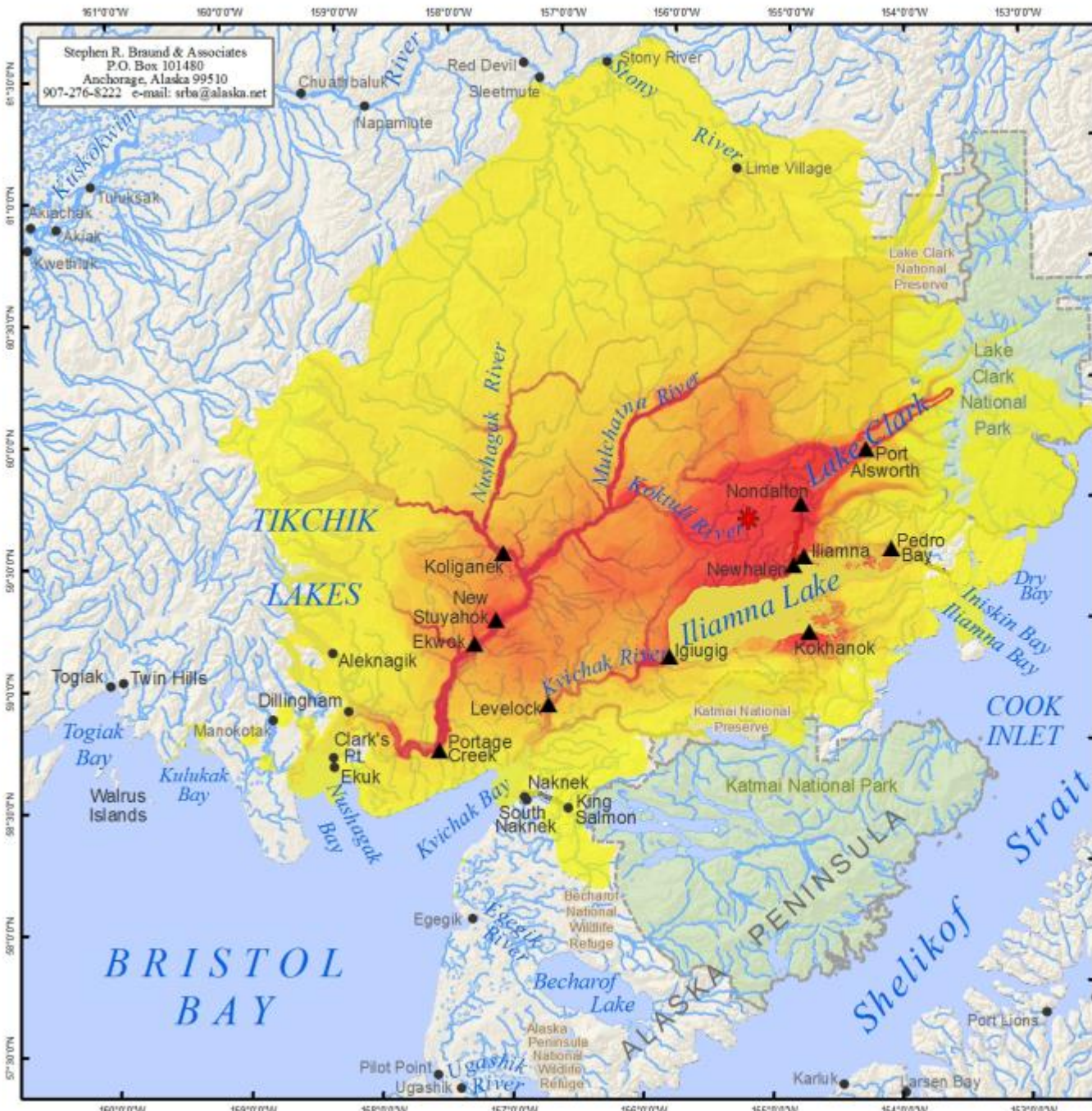
Use areas include traplines.
 Other areas may have been used
 for resource harvesting.

-  Study-area Community with Data Included on Map (12)
-  General Deposit Location
-  National Park
-  National Preserve
-  Local Road

Source:
 Under contract to Northern Dynasty Mines Inc.,
 Stephen R. Braund & Associates (SRB&A) conducted
 interviews with 288 harvesters in 12 communities
 between March 2005 and December 2006. SRB&A
 coordinated with local community organizations
 and local harvesters to select active and
 knowledgeable subsistence harvesters to interview.



Map Scale 1:2,600,000	Date: August 2010
	Author: SRB&A



Map 23-9 Overlapping Polygons Example, 12 Communities

Overlapping
 Subsistence Use Areas



Use areas include traplines. Other areas may have been used for resource harvesting.

- ▲ Study-area Community with Data Included on Map (12)
- * General Deposit Location
- National Park
- National Preserve
- Local Road

Source:
 Under contract to Northern Dynasty Mines Inc., Stephen R. Braund & Associates (SRB&A) conducted interviews with 288 harvesters in 12 communities between March 2005 and December 2006. SRB&A coordinated with local community organizations and local harvesters to select active and knowledgeable subsistence harvesters to interview.



Map Scale 1:2,600,000	Date: August 2010
	Author: SRB&A

Subsistence Use Areas - Baseline

- Existing and New** Information
 - 1960 to 1982 (ADF&G Habitat Guides)
 - 1980 to 2000 (ADF&G Large Land Mammals)
 - 2001 to 2002 (ADF&G Large Land Mammals)
 - 2004 (previous study year; ADF&G) **
 - 1996/7 to 2005/6 (“Last 10 Years;” SRB&A) **

What constitutes a baseline?

- Status and trends
- Suite of indicators
 - Capable of measuring change over time
 - Lead to understanding of multiple causes of change

Baseline Indicators – For Each Resource

- Subsistence Use Areas (10 year overlapping use areas) + ADF&G last year
- Harvest Success
- Harvest Effort: frequency of trips; months active; (trip duration)
- Timing of Harvest Activity (Months Use Harvest Areas)
- Harvest Infrastructure: travel routes, camps, cabins, traplines
- Traditional Knowledge – Observed Changes in resources use, abundance, quality, distribution/migration, habitat
- Methods of Transportation - added
- Harvest Amounts (ADF&G)
- Harvest Participation (ADF&G)
- Harvest Diversity (ADF&G)
- Harvest Sharing (ADF&G)
- Harvest Effort (ADF&G)

Baseline Indicators – ADF&G

- For example,
 - Number of Resources Used
 - Number of Resources Attempted to Harvest
 - Number of Resources Harvested
 - Number of Resources Received
 - Number of Resources Given Away
 - Harvest Amount
 - Percent of Households Using, Attempting to Harvest, Harvesting, Giving Away, Receiving Resources

Characteristics of Wild Resource Harvest and Use, 2005

	Igiugig	Kokhanok	Koliganek
Mean Number of Resources Used Per Household	20.9	14.0	20.5
Mean Number of Resources Attempted to Harvest Per Household	17.1	11.9	15.3
Mean Number of Resources Harvested Per Household	15.8	10.7	14.3
Mean Number of Resources Received Per Household	9.9	5.7	8.1
Mean Number of Resources Given Away Per Household	10.5	6.3	8.8
Mean Household Harvest Pounds	1716.2	2563.0	3490.3
Community Per Capita Harvest Pounds	542.0	679.6	977.3

Summary of Key Indicators (First 12 Communities)

- Total Subsistence Use Areas ranged from 1,481 square miles to 26,764 square miles.
 - Use Areas extends west as far Kulukak Bay and Round Island, east into Cook Inlet, north to the Swift and Kuskokwim rivers, and south to the Naknek River area
- Approximately 150 individual species are harvested
- Year-round subsistence, with peaks in the summer/early fall and late winter/spring months

Summary of Key Indicators (ADF&G First 10 Communities)

- First 10 ADF&G Study Communities
 - Per capita harvests ranged from 132.8 pounds (Port Alsworth) to 977.3 pounds (Koliganek)
 - Households harvest average of 6.7 and 15.8 species
 - Share average of 3.4 and 10.5 resources
 - Average of 89% of households reported participating in subsistence activities

Primary Community Concerns

- Related to Pebble Project
 - Contamination of Watershed
 - Disruption of Wildlife due to project-related disturbances
 - Contamination of Wildlife
 - Social Effects related to impacts on subsistence and influx of outsiders to the region
 - Generally the respondents in interviews focused on concerns but there were respondents from most communities that voiced support for project because of economic benefit to region

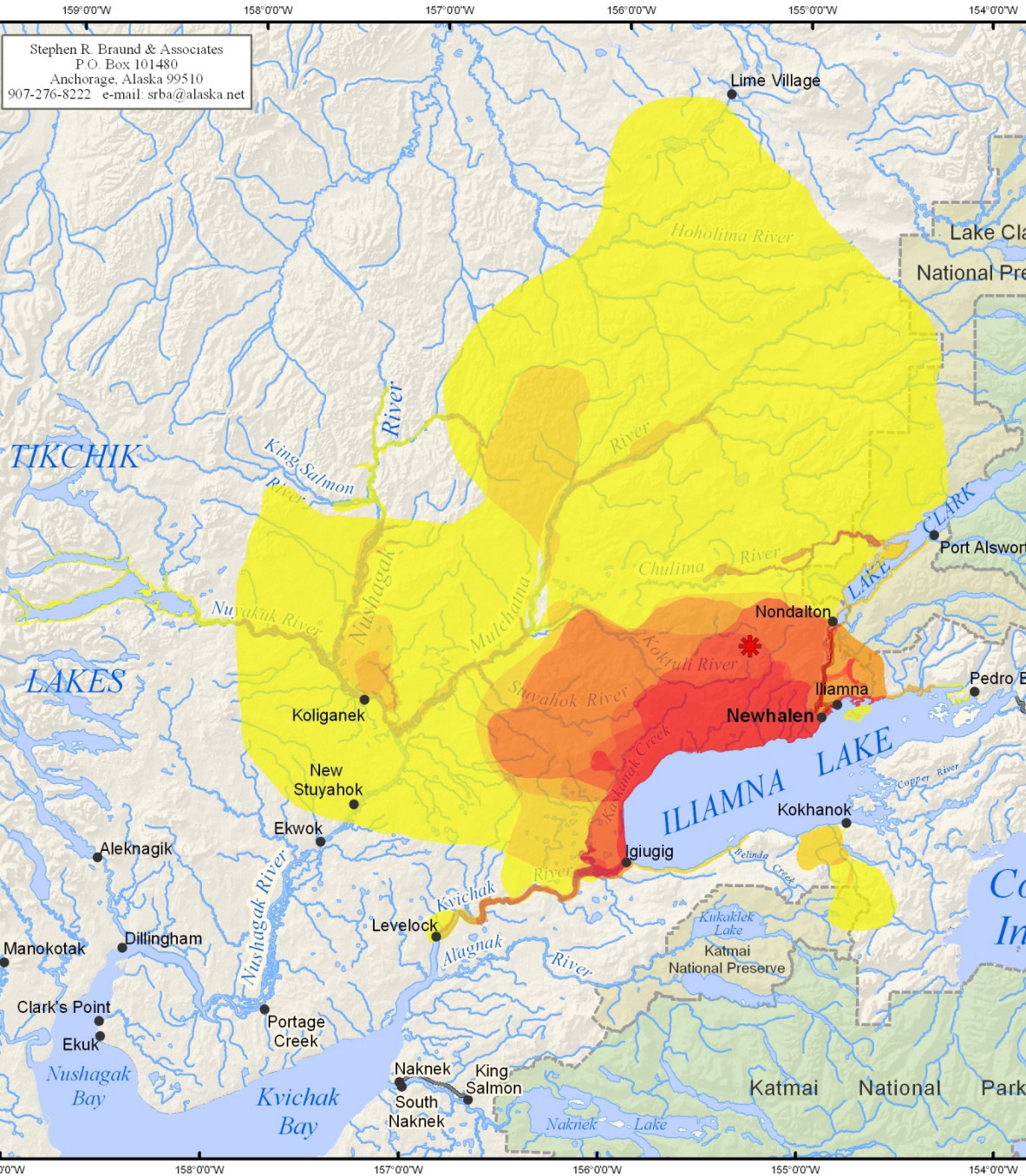
Pebble Project: Subsistence & Traditional Knowledge Studies

Subsistence Use Areas & Traditional Knowledge Study for Newhalen, Alaska

Stephen R. Braund & Associates

Baseline Indicators – Caribou Use Areas

- Use Areas – Nushagak, Mulchatna, and Kvichak river drainages and an overland area stretching north almost to Lime Village and west toward the Tikchik Lakes
- 11,373 sq miles
- Highest overlap - north of Iliamna Lake between the Newhalen and Kvichak rivers and inland to the Kuktuli River basin
- Report also includes comparison of previously documented use areas as well as 2004 ADF&G resource use areas



Stephen R. Braund & Associates
 P.O. Box 101480
 Anchorage, Alaska 99510
 907-276-8222 e-mail: srba@alaska.net



Map 7 Subsistence Use Areas Newhalen, Caribou 1996/97 - 2005/06

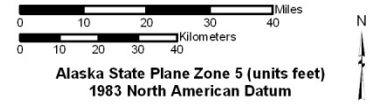
1996/97-2005/06 Overlapping
 Subsistence Use Areas



Other areas may have been used for resource harvesting.

- General Deposit Location
- National Park
- National Preserve
- Local Road

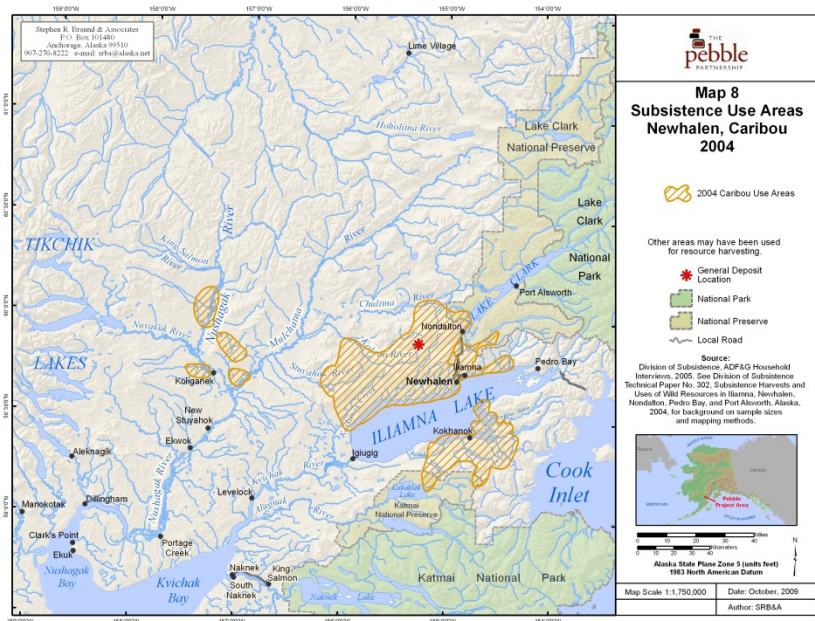
Source:
 Under contract to Northern Dynasty Mines Inc., Stephen R. Braund & Associates (SRB&A) conducted interviews with 21 Newhalen harvesters in May 2005 and August 2006. SRB&A coordinated with the Newhalen Tribal Council and local harvesters to select active and knowledgeable subsistence harvesters to interview.



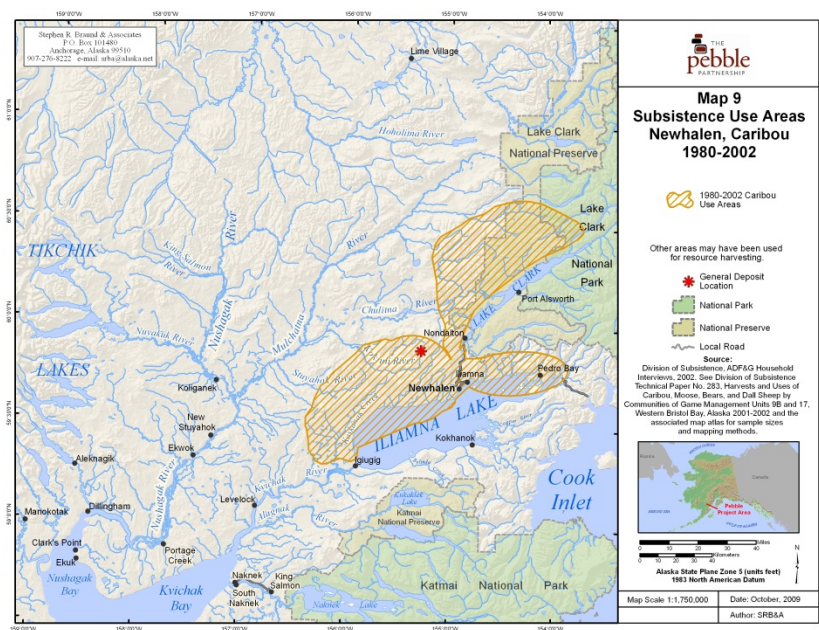
Map Scale 1:1,750,000	Date: October, 2009
	Author: SRB&A

Subsistence Use Areas - Baseline

- Existing and New** Mapped Information
 - 1960 to 1982 (ADF&G Habitat Guides)
 - 1980 to 2000 (ADF&G Large Land Mammals)
 - 2001 to 2002 (ADF&G Large Land Mammals)
 - 2004 (previous study year; ADF&G) **
 - 1996/7 to 2005/6 (“Last 10 Years;” SRB&A) **

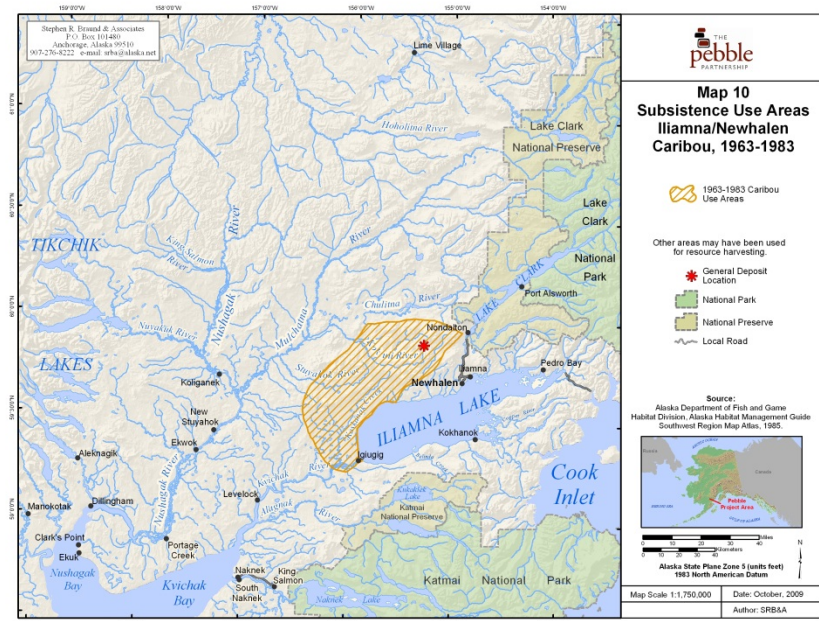


Newhalen Caribou 2004



Newhalen Caribou 1980-2002

**Iliamna/Newhalen Caribou
1963-1983**



Caribou Subsistence Use Area Comparison

- Area with higher frequency of overlaps similar to the 2004 caribou harvest area
- Extent of last 10 years caribou use areas noticeably larger than 1960 to 2002 use areas. Why?
 - One respondent had a large airplane hunting area for caribou
 - Inclusion of Newhalen respondents' caribou use areas based out of other villages (in this case, Koliganek)
 - Traveling further to hunt caribou in recent years because of their absence from the area

Baseline Indicator: Harvest Success x Use Area - Caribou

Table 23-6: Newhalen Harvest Success in Caribou Use Areas

Harvest Success	Percentage of Caribou Use Areas	Percentage of All Resources Use Areas
Always	13%	64%
Usually	52%	17%
Unpredictable	21%	8%
Seldom	15%	11%
Total	100%	100%
Number of Subsistence Use Areas	62	1,071

- Respondents identified very few always successful use areas because of absence of caribou in area
- “[Our success is] seldom lately with the caribou, because of the caribou migration [changing].” (SRB&A Newhalen Interview August 2006)

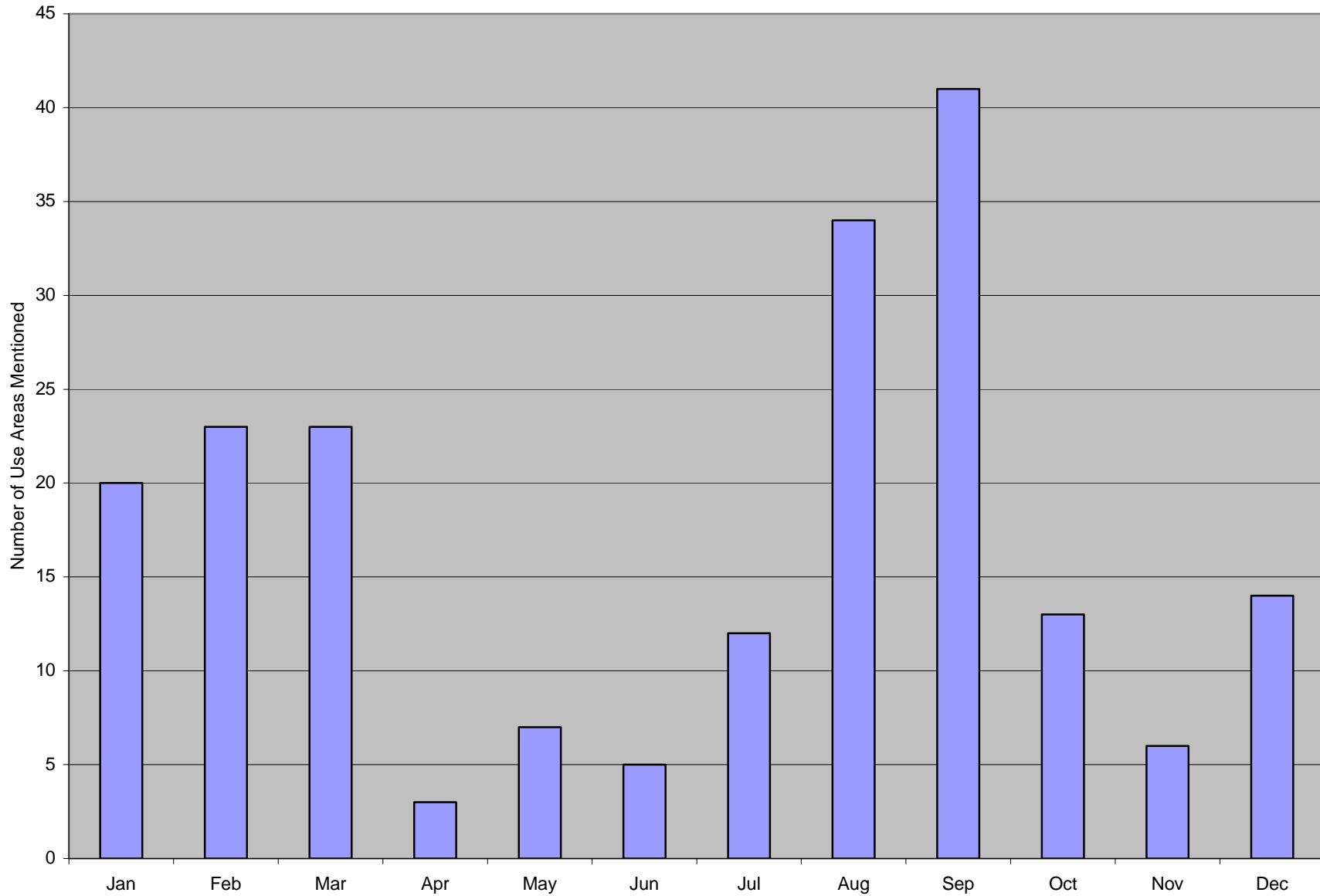
Baseline Indicator: Frequency of Trips - Caribou

Table 23-7: Newhalen Frequency of Trips to Caribou Use Areas

Frequency of Trips	Percentage of Caribou Use Areas	Percentage of All Resources Use Areas
More than 20 trips per year	16%	6%
6-20 trips per year	20%	17%
4-5 trips per year	19%	10%
2-3 trips per year	23%	27%
1 trip per year	5%	19%
Not every year	17%	22%
Total	100%	100%
Number of Subsistence Use Areas	64	1,509

Baseline Indicator: Months Use Areas – Caribou

Figure 23-166: Newhalen Use Areas for Caribou by Month



Resource Change – Newhalen Caribou

Table 23-8: Frequency of Identified Changes in Caribou

Number and percent of harvesters perceiving change in:	No. (%) of Harvesters Interviewed
Use	12 (57%)
Abundance	10 (48%)
Quality	11 (52%)
Distribution	10 (48%)
Migration	11 (52%)

Traditional Knowledge – Caribou – Primary Resource Changes

- Primary Changes reported for Use, Abundance, Quality and Distribution/Migration:
 - Decrease Harvest/Increased Difficulty: decreased presence of caribou in the area, the rising cost of gasoline, work responsibilities, and age-related limitations
 - Decrease in Species Number: change in local abundance. Often indicated distribution or migration of caribou had changed, rather than overall abundance
 - Disease/Infection: isolated instances of sick or diseased caribou
 - Change in Migration Route/Further from Village
- Others reported no change: continue to harvest same amount at same time of year

Newhalen Observations re: Changes in Caribou Distribution/Migration

Observation	Reason Why
<p><i>"They used to have a pattern, and this herd would come up here and within ten years...[they no longer migrate this way]."</i></p>	<p><i>"Stress from people. Airplanes, noise, pollution, Hondas. Another thing...I think they [sport hunters] are lining up [and killing the caribou]. The sport hunters are stopping migration."</i></p>
<p><i>"The caribou have changed, they're going more west now. [There] used to be lots [of caribou] around here."</i></p>	<p><i>"Some people say the wolves affect where they go, and the food source [also]. I would think the food source...but I don't know if anyone really knows."</i></p>
<p><i>"Less caribou. I haven't seen caribou in two or three years. One year, we had so many, and they were all over the village."</i></p>	<p><i>"Some say maybe it's the food, but I think it's the noise, because the last few years we have had these helicopters. I think it's the mining companies' helicopters."</i></p>

Traditional Knowledge – Observations on Key Habitat Areas – Caribou –

- Identified key caribou habitat, including calving grounds as well as areas of caribou feeding
- In particular: flats and hills between Iliamna Lake and Nushagak River as well as Kvichak River area
- Map 23-355 – Shows use areas for all resources for Newhalen

Do Same Analysis for:

- Caribou
- Moose
- Other Large Land Mammals (Black and Brown Bear, Sheep)
- Furbearers & Small Land Mammals (Porcupine & Squirrel)
- Seals
- Other Marine Mammals (Beluga, Walrus)
- All Fish
- Salmon (Sockeye salmon, including spawning), chinook, coho, other salmon)
- Nonsalmon fish (Arctic grayling, Burbot, Dolly Varden, Northern Pike, Trout, Whitefish, Other Fish)
- Waterfowl
- Upland birds
- Eggs
- Berries
- Plants
- Marine Invertebrates
- All Resources

Baseline Indicators – All Resources - Newhalen

- Use Areas - from Lime Village to Naknek and from Tikchik Lake to the eastern perimeters of Lake Clark and Iliamna Lake
- 12,201 sq miles
- High overlap – along rivers and north of Iliamna Lake
- Importance of subsistence to community

Stephen R. Braund & Associates
 P.O. Box 101480
 Anchorage, Alaska 99510
 907-276-8222 e-mail: srba@alaska.net



Map 51 Subsistence Use Areas Newhalen, All Resources 1996/97 - 2005/06

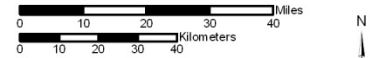
1996/97-2005/06 Overlapping
 Subsistence Use Areas



Other areas may have been used
 for resource harvesting.

- General Deposit Location
- National Park
- National Preserve
- Local Road

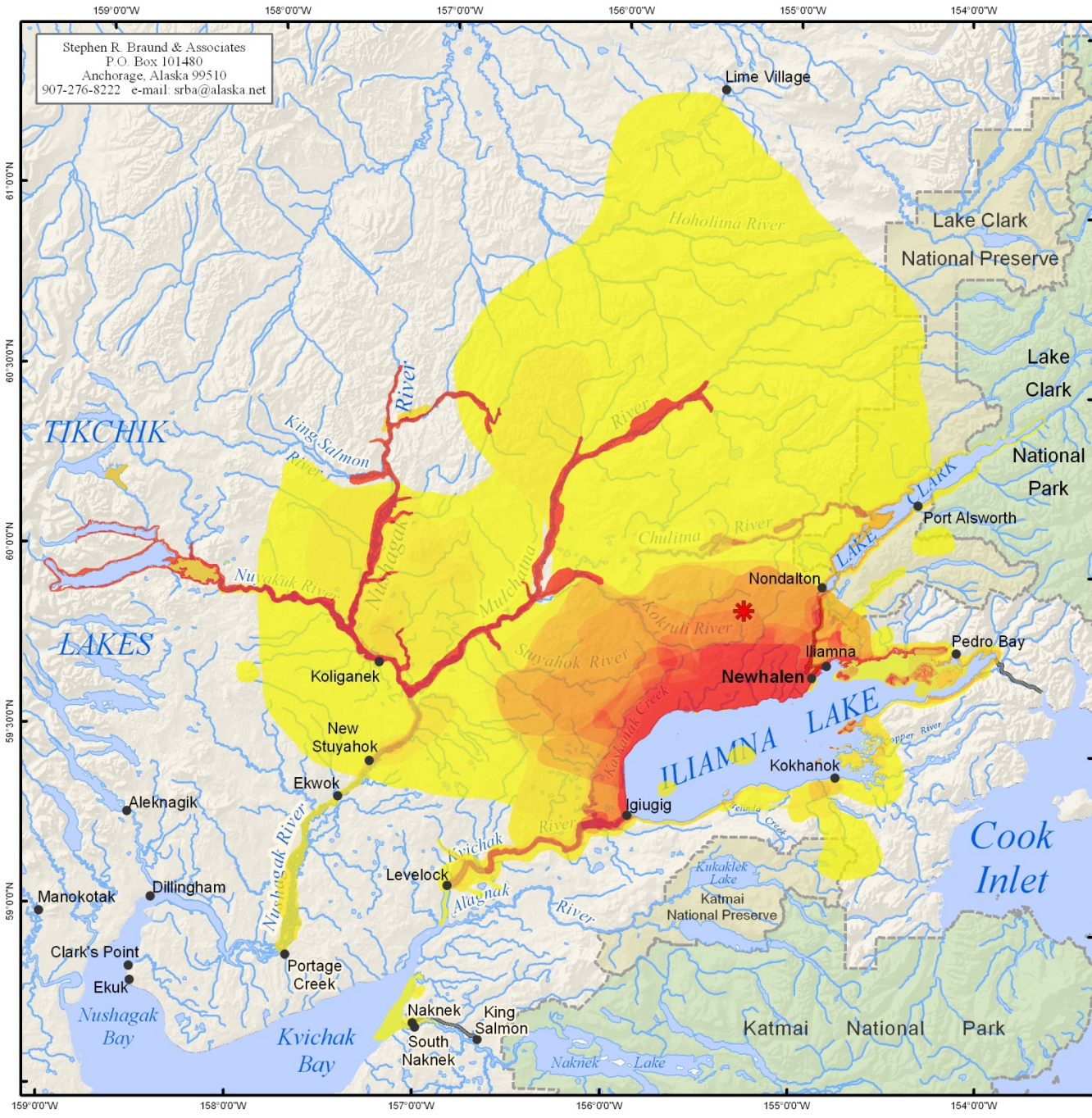
Source:
 Under contract to Northern Dynasty Mines Inc.,
 Stephen R. Braund & Associates (SRB&A)
 conducted interviews with 21 Newhalen harvesters
 in May 2005 and August 2006. SRB&A coordinated
 with the Newhalen Tribal Council and local harvesters
 to select active and knowledgeable subsistence
 harvesters to interview.



Alaska State Plane Zone 5 (units feet)
 1983 North American Datum

Map Scale 1:1,750,000 Date: October, 2009

Author: SRB&A

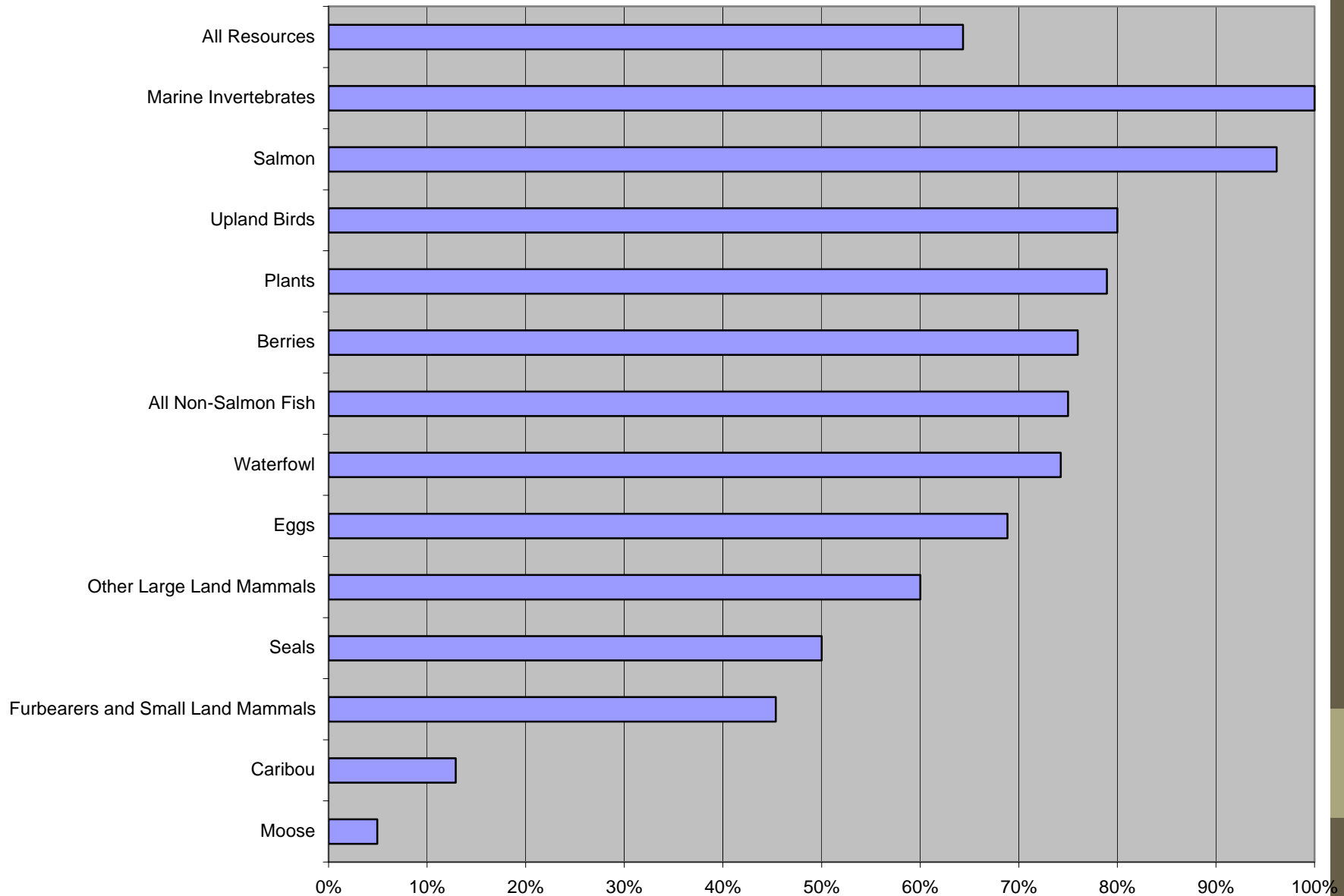


Baseline Indicator: Harvest Success x Use Area – All Resources

Table 23-58: Newhalen Harvest Success in All Resources Use Areas

Harvest Success	Percentage of Use Areas
Always	64%
Usually	17%
Unpredictable	8%
Seldom	11%
Total	100%
Number of Subsistence Use Areas	1,071

Fig. 23-180: Percent of Newhalen Subsistence Use Areas that Respondents were Always Successful



Baseline Indicator: Frequency of Trips – Newhalen – All Resources

Table 23-59: Newhalen Frequency of Trips to All Resource Use Areas

Frequency of Trips	Percentage of Use Areas
More than 20 trips per year	6%
6-20 trips per year	17%
4-5 trips per year	10%
2-3 trips per year	27%
1 trip per year	19%
Not every year	22%
Total	100%
Number of Subsistence Use Areas	1,509

Figure 23-181: Percent of Newhalen Subsistence Use Areas Visited Six or More Times Per Year

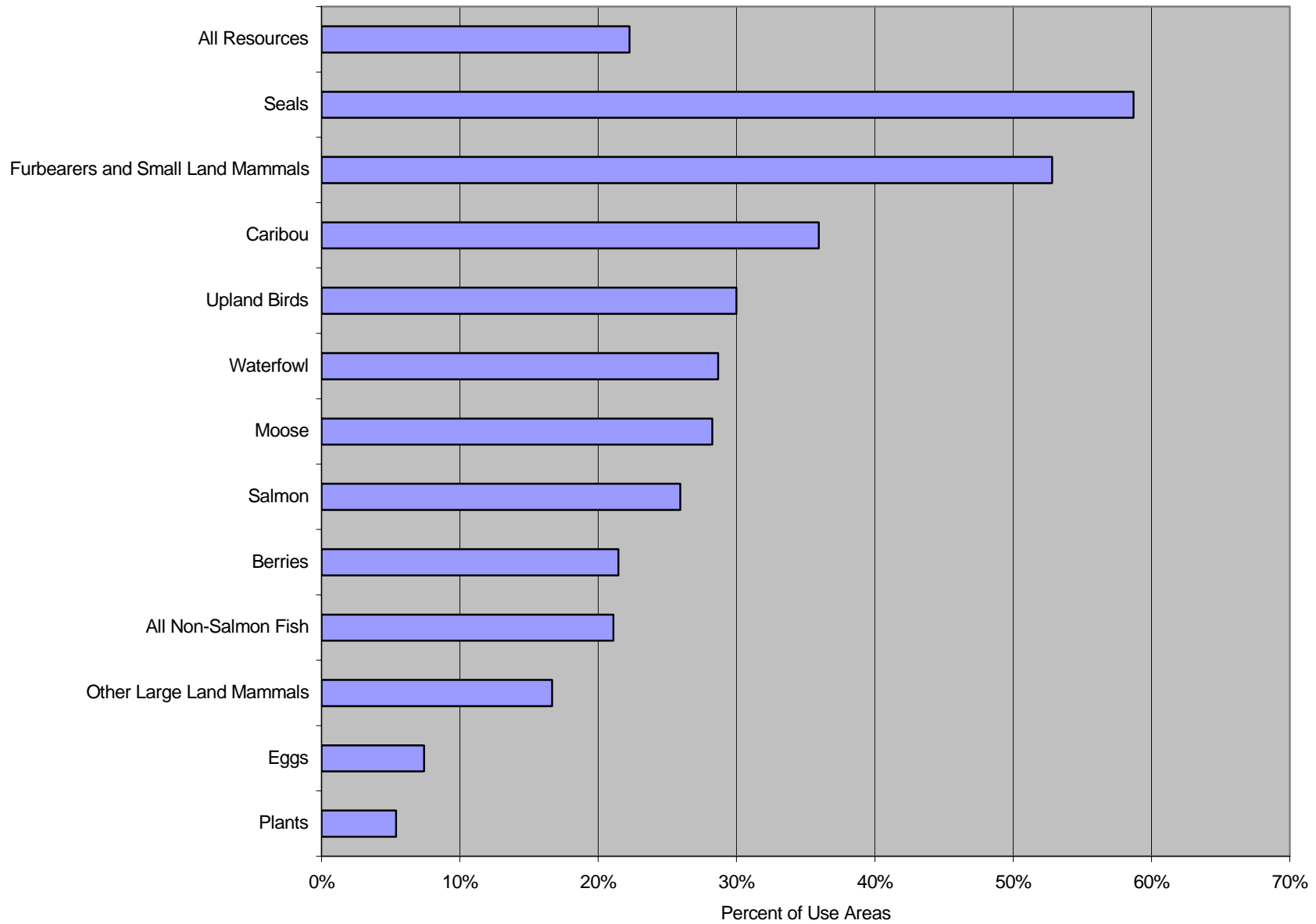
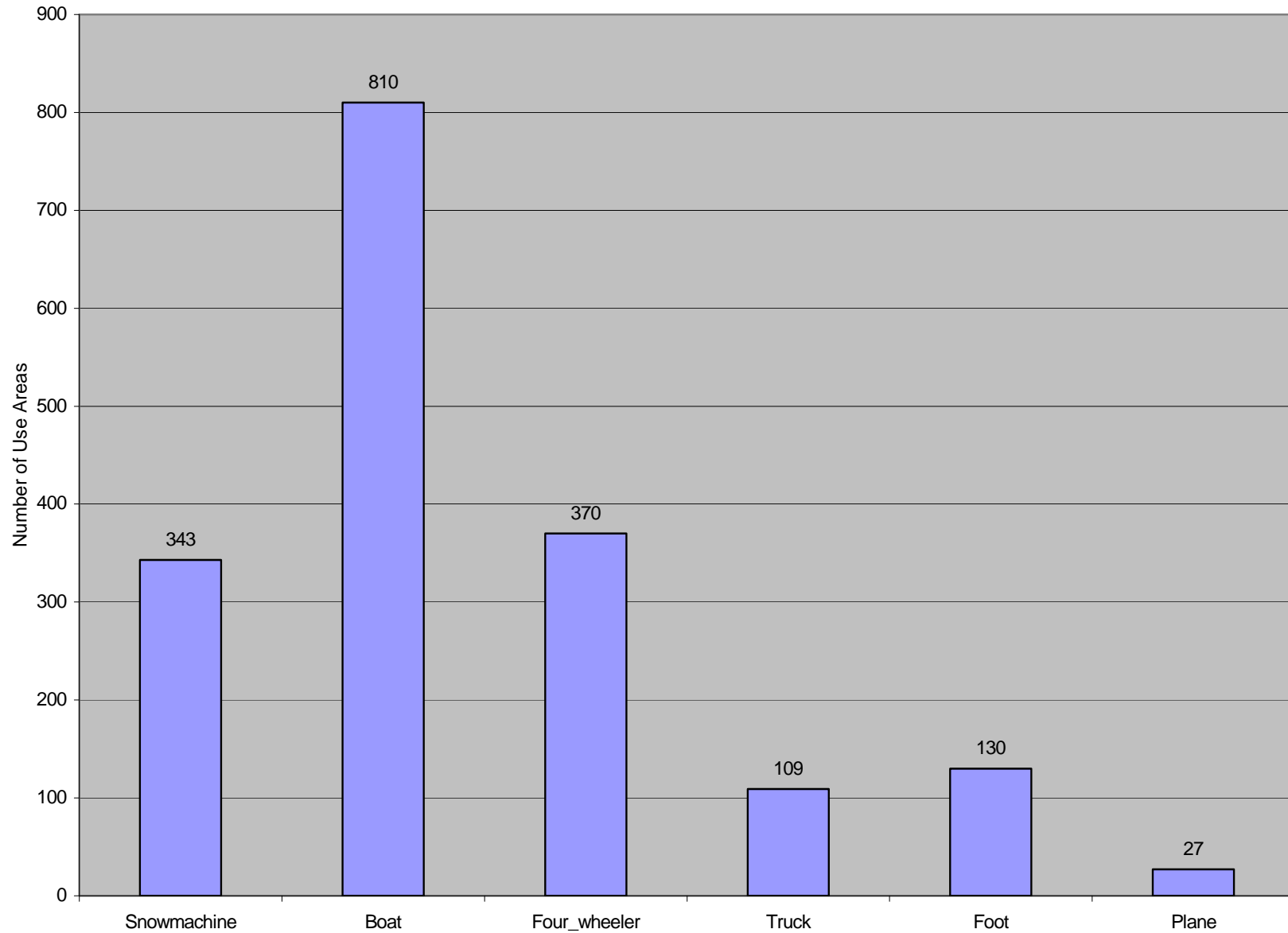
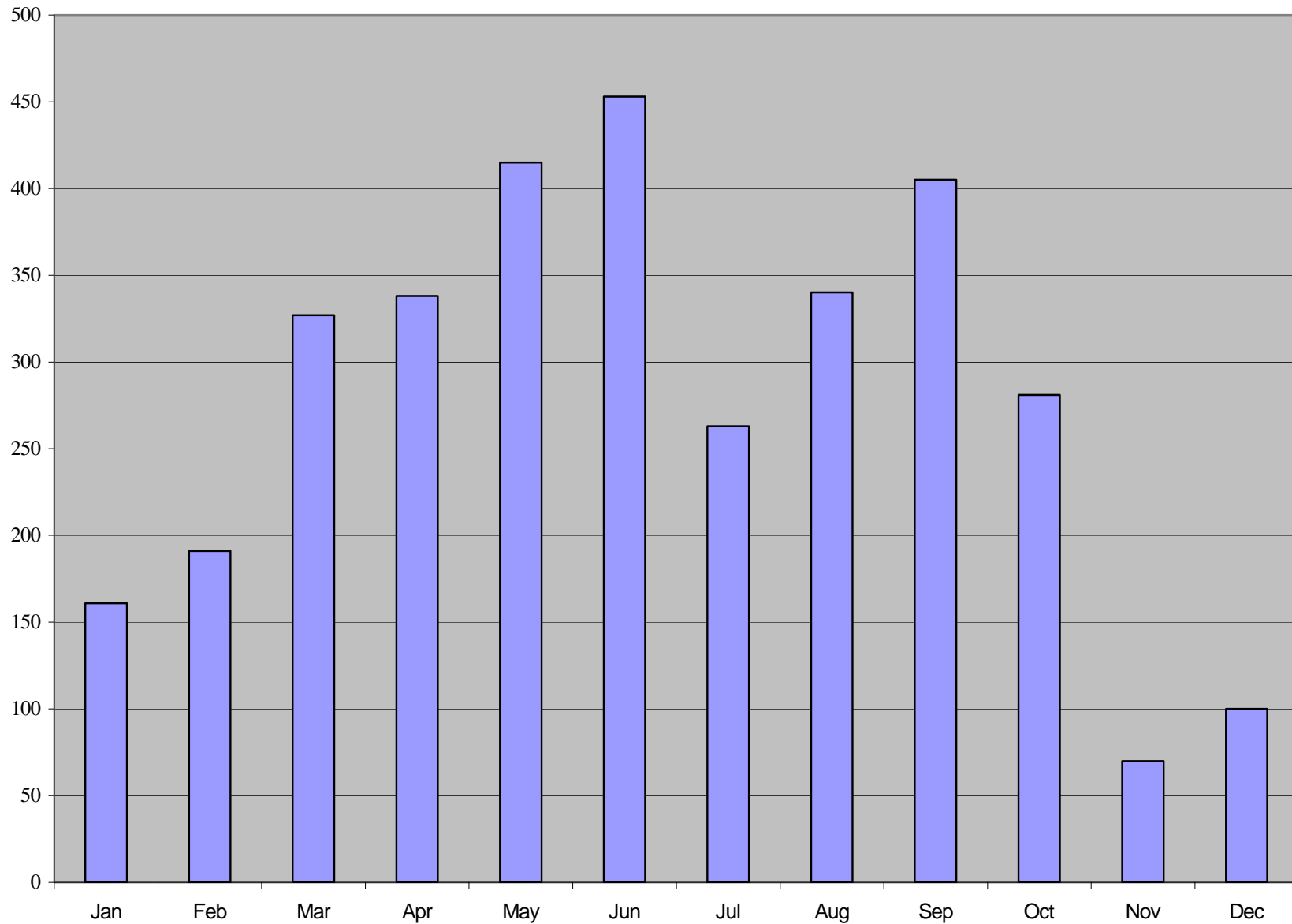


Figure 23-183: Newhalen Travel Methods



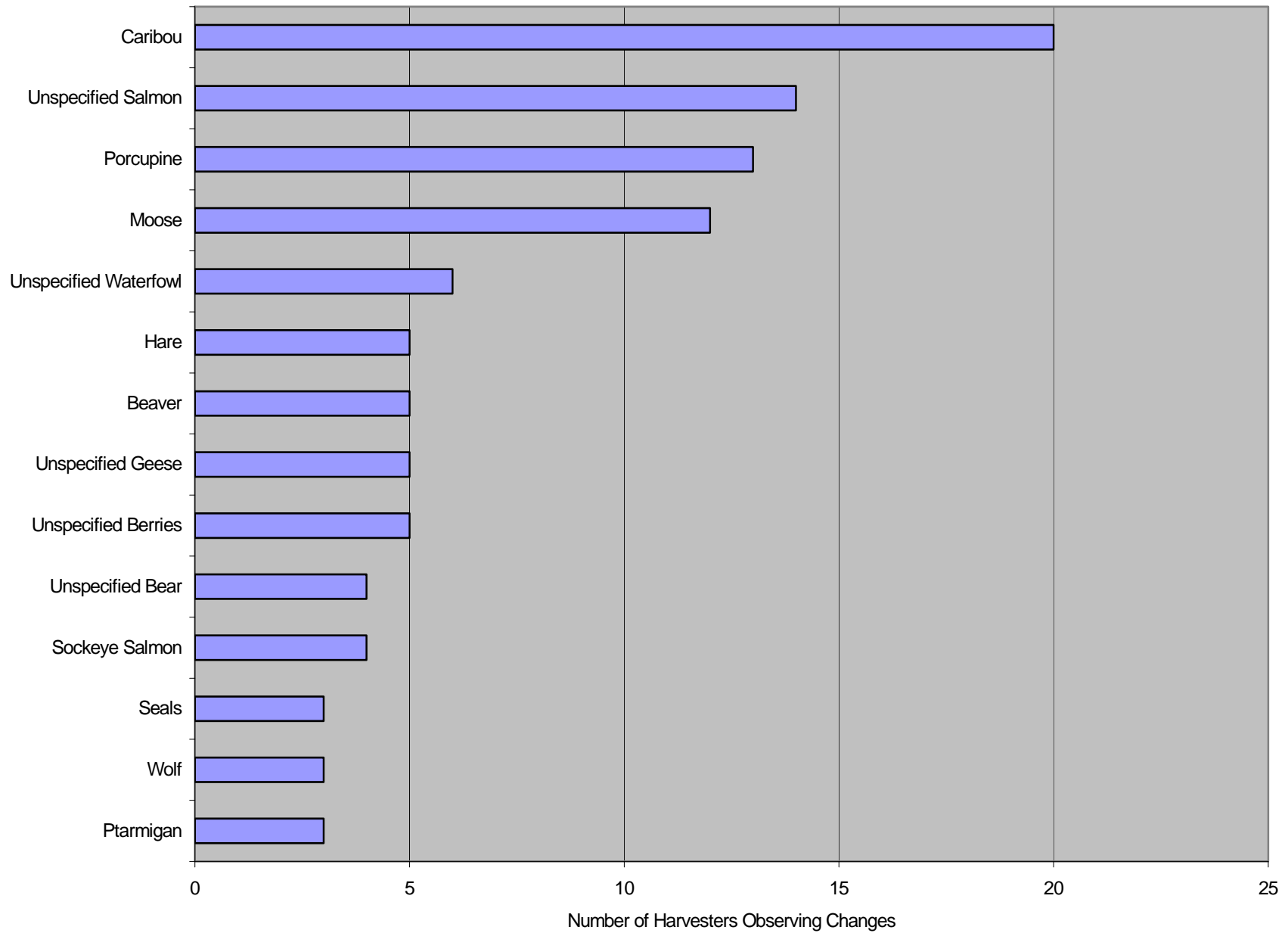
Baseline Indicator: Months Use Areas – All Resources
Figure 23-184: Newhalen Use Areas for All Resources by Month



Observations of Resource Change and Current Condition

- Highest number of harvesters reporting a change:
 - Caribou (20 harvesters), salmon (14), porcupine (13), and moose (12)
- Changes in Abundance was the number one type of change noted for any resource
 - Decrease in Species Number – Caribou, Moose, Berries, Waterfowl, and Porcupine
 - Increase in Species Number – Wolf, Bear, and Beaver

Figure 23-185: Number of Harvesters Observing Change (3 or more)

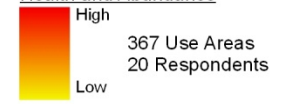


Stephen R. Braund & Associates
 P.O. Box 101480
 Anchorage, Alaska 99510
 907-276-8222 e-mail: srba@alaska.net



Map 52 Areas Perceived Important to Health and Abundance Newhaleen, All Resources

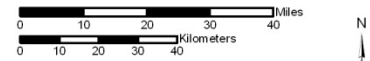
Overlapping Areas
 Perceived Important to
 Health and Abundance



Other areas may have been used for resource harvesting.

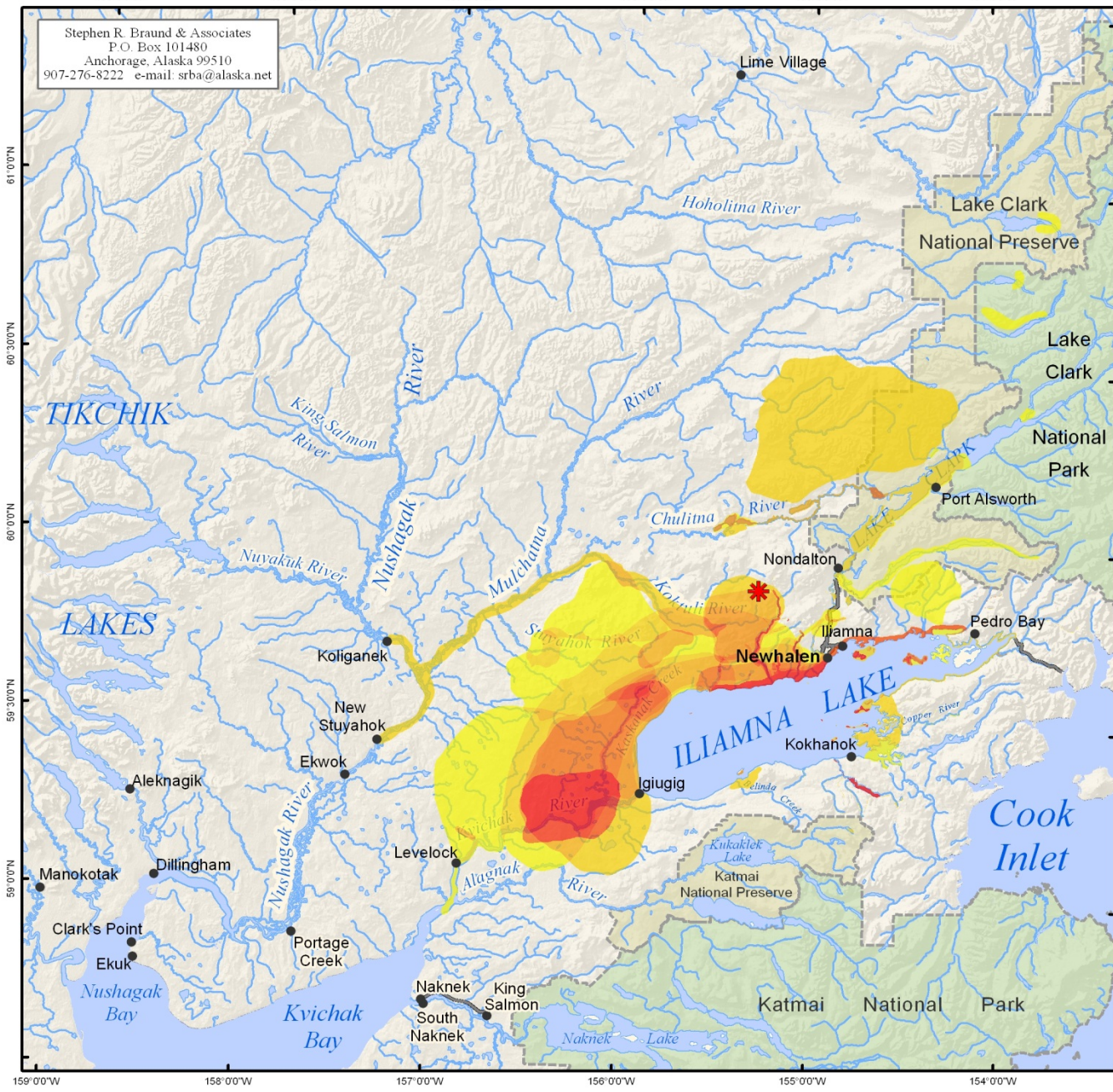
- General Deposit Location
- National Park
- National Preserve
- Local Road

Source:
 Under contract to Northern Dynasty Mines Inc.,
 Stephen R. Braund & Associates (SRB&A)
 conducted interviews with 21 Newhaleen harvesters
 in May 2005 and August 2006. SRB&A coordinated
 with the Newhaleen Tribal Council and local harvesters
 to select active and knowledgeable subsistence
 harvesters to interview.



Alaska State Plane Zone 5 (units feet)
 1983 North American Datum

Map Scale 1:1,750,000	Date: October, 2009
	Author: SRB&A





Map XX Camps and Cabins Newhalen 1996/97 - 2005/06

▲ Camp or Cabin

Residents use other camps and cabins in addition to those represented on this map.

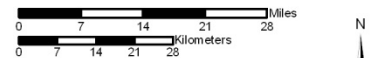
✳ General Deposit Location

▭ National Park

▭ National Preserve

~ Local Road

Source:
 Under contract to Northern Dynasty Mines Inc., Stephen R. Braund & Associates (SRB&A) conducted interviews with 21 Newhalen harvesters in May 2005 and August 2006. SRB&A coordinated with the Newhalen Tribal Council and local harvesters to select active and knowledgeable subsistence harvesters to interview.



Alaska State Plane Zone 5 (units feet)
 1983 North American Datum

Map Scale 1:1,250,000	Date: October, 2009
	Author: SRB&A

Stephen R. Braund & Associates
 P.O. Box 101480
 Anchorage, Alaska 99510
 907-276-8222 e-mail: srba@alaska.net



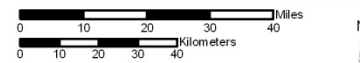
Map 53 Travel Routes Newhalen 1996/97 - 2005/06

19 respondents identified travel routes

Residents use other travel routes in addition to those represented on this map.

- General Deposit Location
- National Park
- National Preserve
- Local Road

Source:
 Under contract to Northern Dynasty Mines Inc., Stephen R. Braund & Associates (SRB&A) conducted interviews with 21 Newhalen harvesters in May 2005 and August 2006. SRB&A coordinated with the Newhalen Tribal Council and local harvesters to select active and knowledgeable subsistence harvesters to interview.

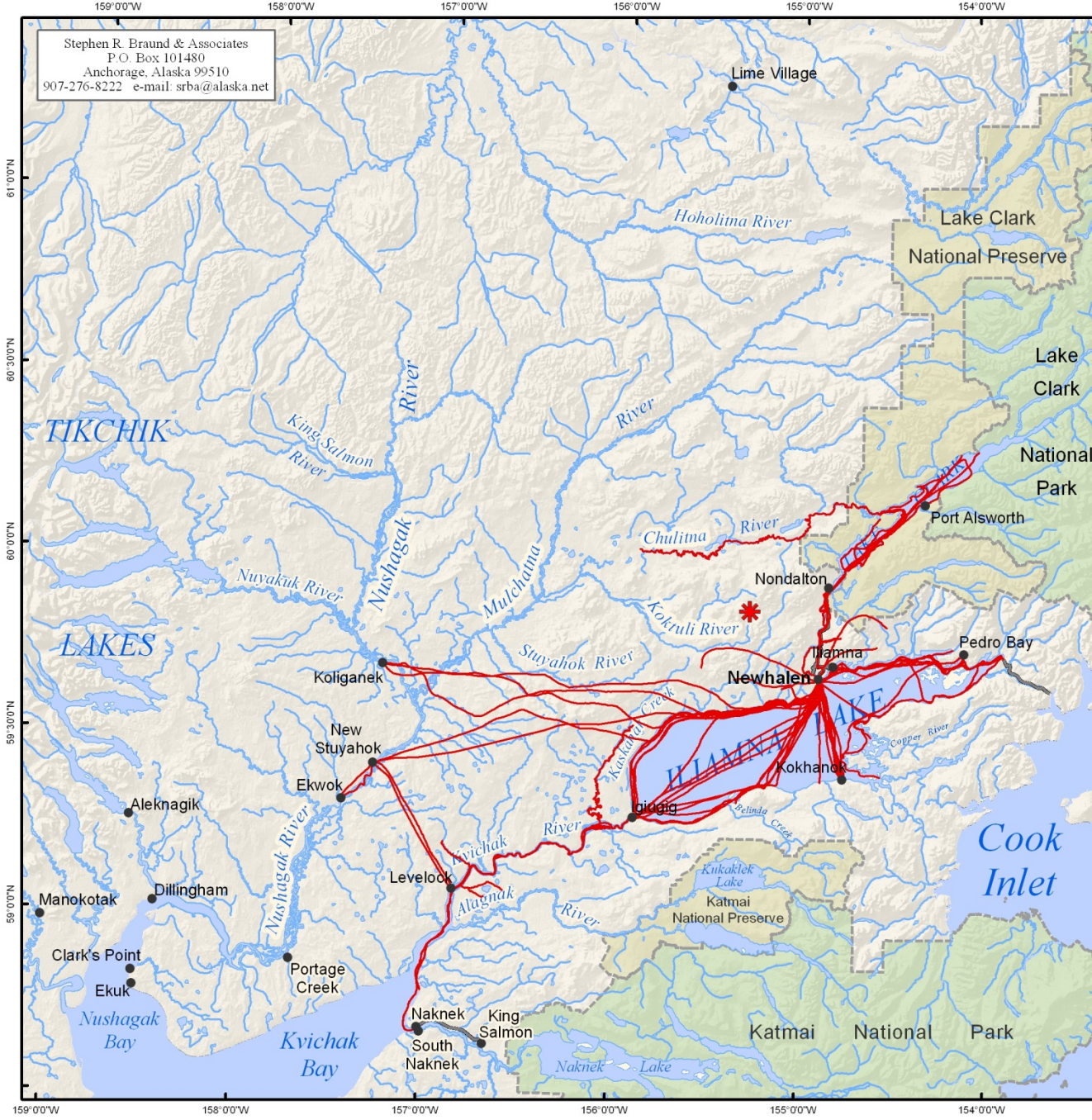


Alaska State Plane Zone 5 (units feet)
 1983 North American Datum

Map Scale 1:1,750,000

Date: October, 2009

Author: SRB&A



Status: SRB&A Subsistence/Traditional Knowledge Community Reports

- Completed 13 community reports
 - Koliganek, New Stuyahok, Ekwok, Portage Creek, Levelock, Iguigig, Kokhanok, Iliamna, Newhalen, Nondalton, Pedro Bay, Port Alsworth/North Shore Lake Clark, and Lime Village
- Sent 3 review copies of report to each community council asking for comments
- Offered to conduct review meeting in each community
- Made community presentations in 3 communities: Iliamna, Newhalen, Nondalton

Status: SRB&A Subsistence/Traditional Knowledge Community Reports

- Sent 2nd letter to communities requesting any comments and offering community review trip
- Two Pending Community Reviews (Ekwok and Nondalton)
- Finalized 11 community appendices and delivered to PLP (all but Nondalton and Ekwok)

Status: SRB&A Subsistence/Traditional Knowledge Community Reports

- Submitted EBD chapters for Bristol Bay and Cook Inlet, including
 - 10 Community reports are appendices to EBD
 - Lime Village – completed but not in EBD
- Pending Reports: King Salmon, Naknek, South Naknek, Aleknagik, and Clarks Point
- Remaining SRB&A fieldwork: Manokotak, Dillingham

Status: ADF&G

- Reports Incorporated into EBD
 - Technical Paper No. 302 - Iliamna, Newhalen, Nondalton, Pedro Bay, Port Alsworth
 - Technical Paper No. 322 - Kokhanok, Igiugig, Levelock, New Stuyahok, Koliganek
- Drafts under Review
 - Naknek, South Naknek, King Salmon, Lime Village
 - Aleknagik, Clarks Point, Manokotak
 - Dillingham Fieldwork Completed in 2011

Questions?

Thank You Residents and Councils of

- Koliganek
- New Stuyahok
- Ekwok
- Portage Creek
- Levelock
- Igiugig
- Kokhanok
- Iliamna
- Newhalen
- Nondalton
- Pedro Bay
- Port Alsworth/North Shore Lake Clark
- Naknek
- South Naknek
- King Salmon
- Aleknagik
- Lime Village
- Clarks Point