

Geochemical Characterization

Stephen Day

Claire Linklater

January 31 to February 3, 2012

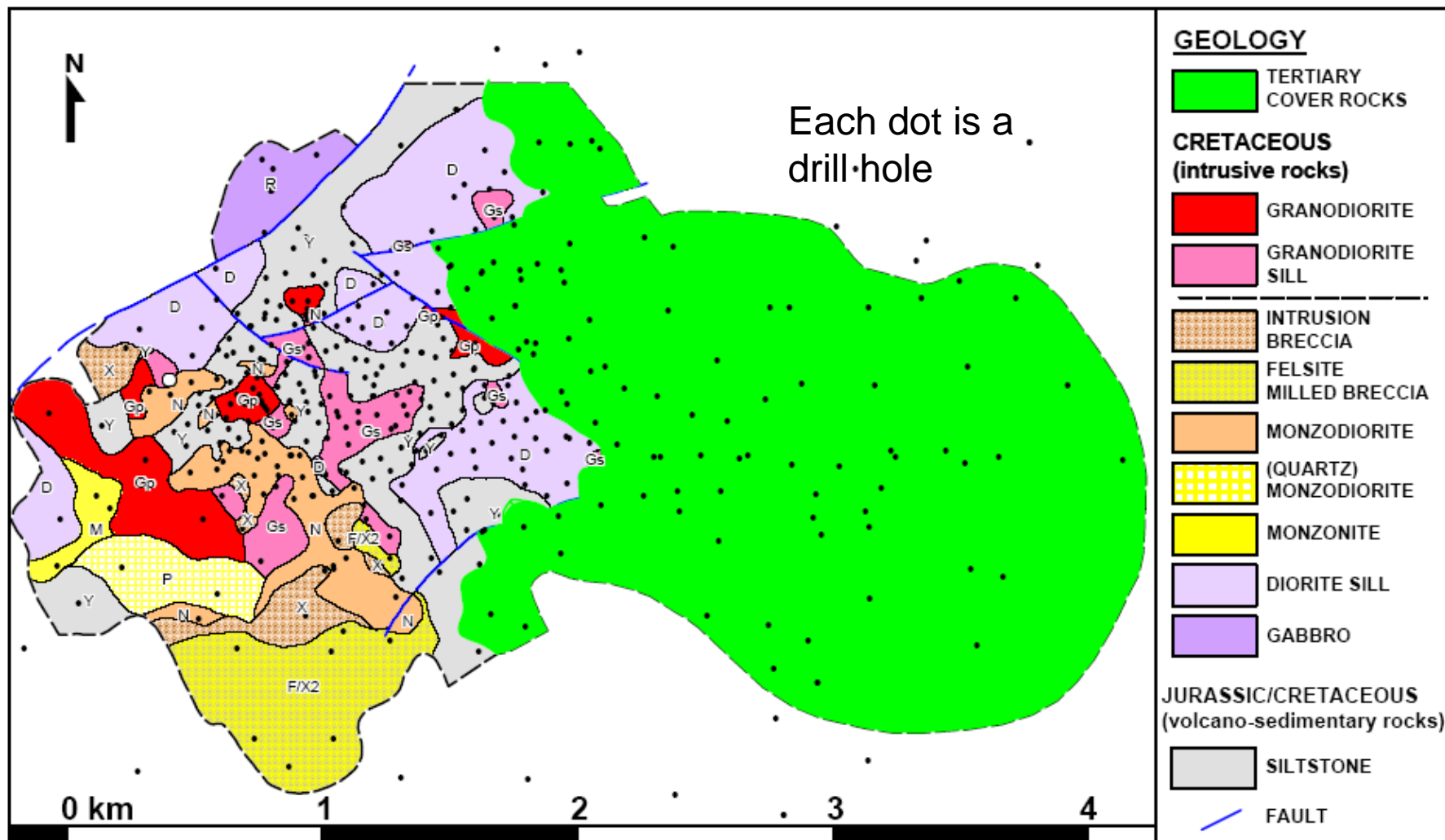
Anchorage

Outline

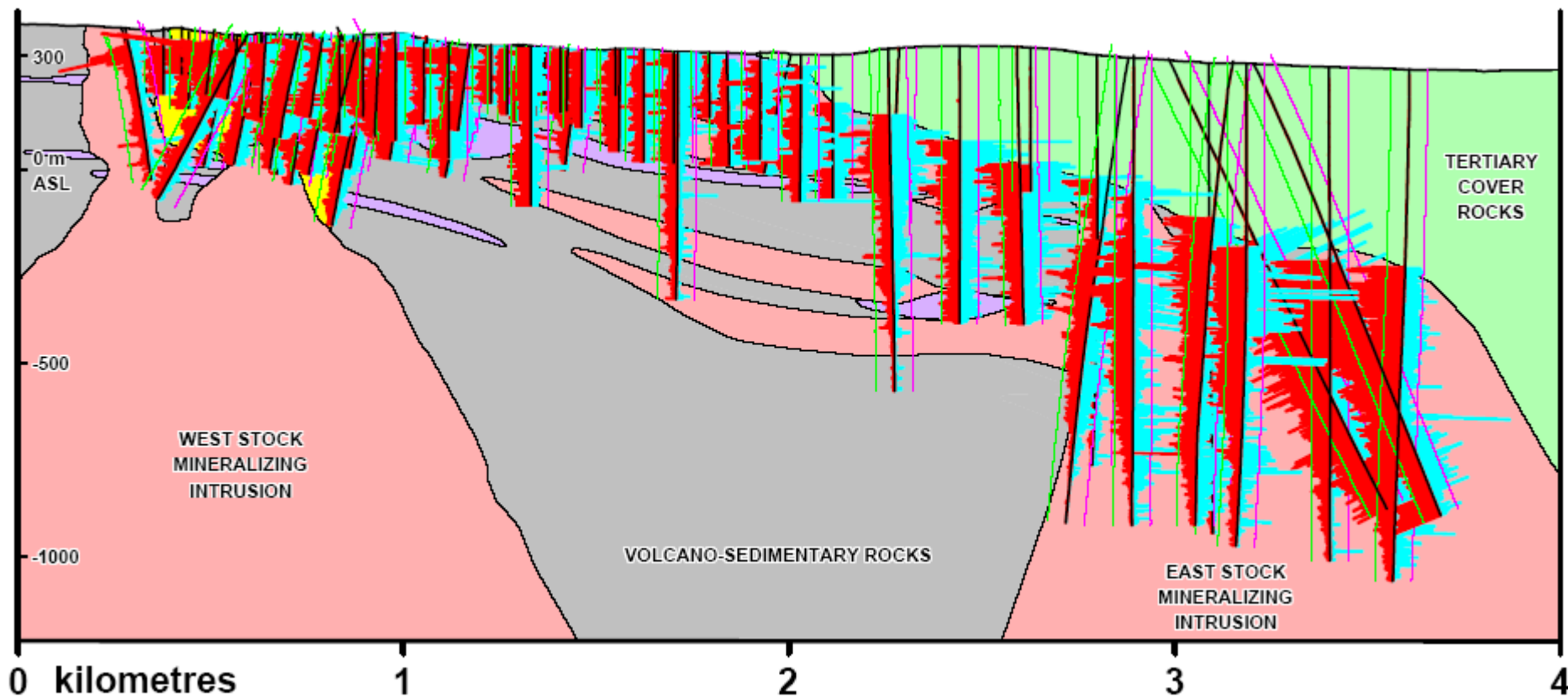
- Geological context
- Overall program objectives and design
- Geochemical characterization of waste rock

GEOLOGICAL CONTEXT

Geology Map



Geological Cross-Section



Program Objectives

- To characterize weathering and leaching behavior of materials that will be produced during mining and processing
- Inform engineering design of waste and water management plans

Study Design Questions

- Potential for metal leaching (ML) and acid rock drainage (ARD) - Static Tests:
 - Waste rock types (Pre-Tertiary, Tertiary)
 - Tailings
- Waste management criteria - Static and Kinetic Tests:
 - Reaction rates
- Water quality predictions - Static and Kinetic Tests:
 - Water management
 - Impact assessments

Tests Matrix

Procedure	West Zone		East Zone			Tailings	
	Pre-T	Tertiary	Pre-T	Tertiary	Over-burden	PWZ	PEZ
Acid-base accounting	485	145	200	200	26	36	12
Mineralogy	17	13	14	13	0	8	12
Extraction Tests	26	6	8	12	0	0	0
MWMP	0	27	0	0	9	0	0
Humidity Cells	21	15 ¹ + 3 ²	13	14 + 3 ²	0	9	9
Bagged weathering tests	0	0	8	12	0	0	0
Subaqueous Columns	6	0	0	2	0	0	0
Aerated Columns	0	0	0	0	0	2	0
Field tests	4 ¹	2 ¹ + 3 ²	0	1 + 3 ²	0	0	0

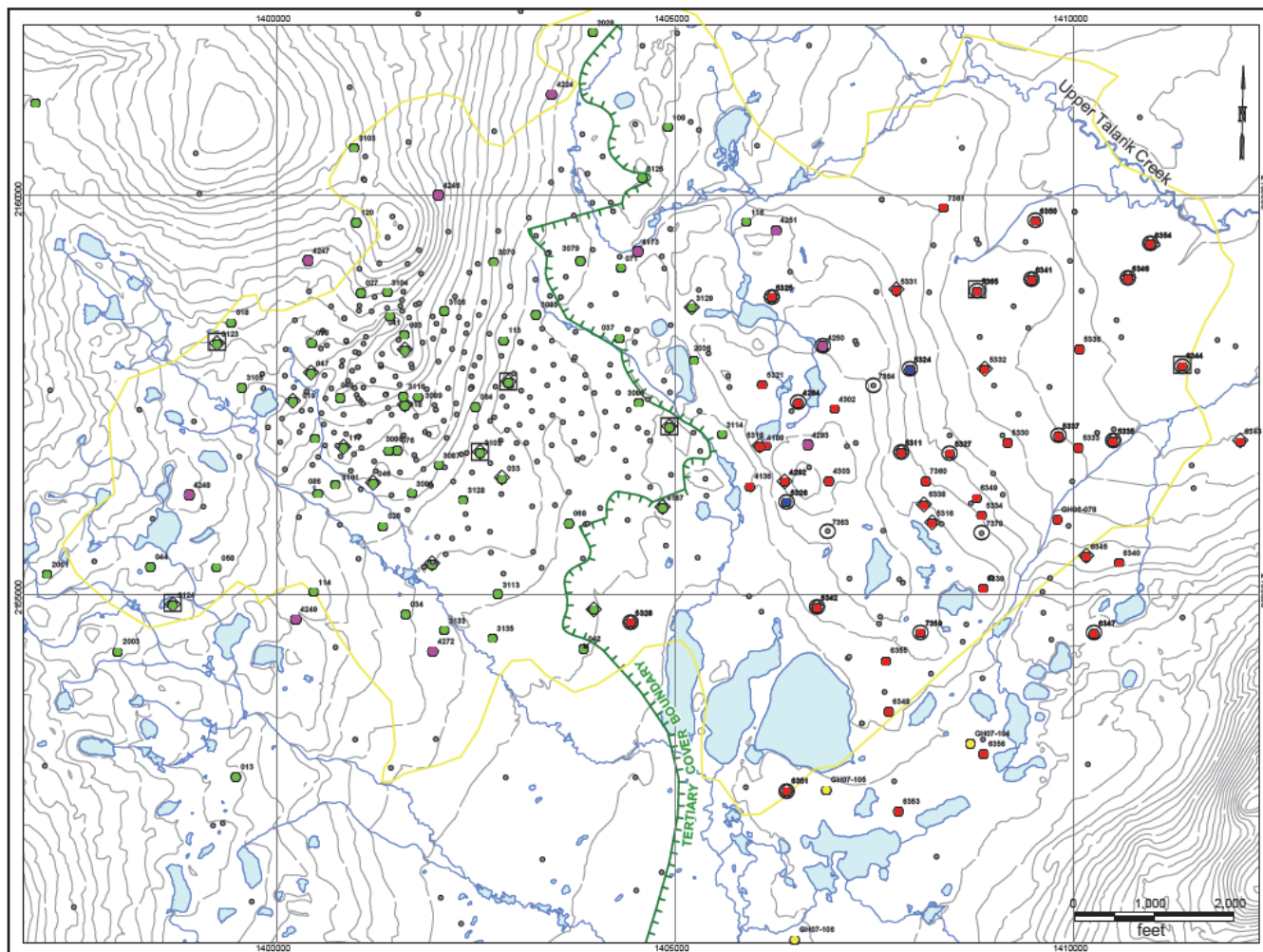
1. Includes some replicate tests.
2. Three field tests contain mixed West and East Zone Tertiary rock.

Chronology of Studies

	Number of kinetic tests running at end of each year (waste rock given as pre-Tertiary/Tertiary)				
	2005	2006	2007	2008	2009
Humidity cell tests (waste rock)					
PEZ	0	0	0	13/14	8/4
PWZ	17/15	5/10	2/9	6/9	6/4
PEZ+PWZ	0	0	0	0/3	0/3
Subaqueous columns (waste rock)					
PEZ	0	0	0	0/2	0/2
PWZ	6/0	4/0	4/0	4/0	1/0
Humidity cell tests (tailings)					
PEZ	0	0	0	9	5
PWZ	6	4	4	9	6

GEOCHEMICAL CHARACTERIZATION OF WASTE ROCK

Spatial Distribution Samples



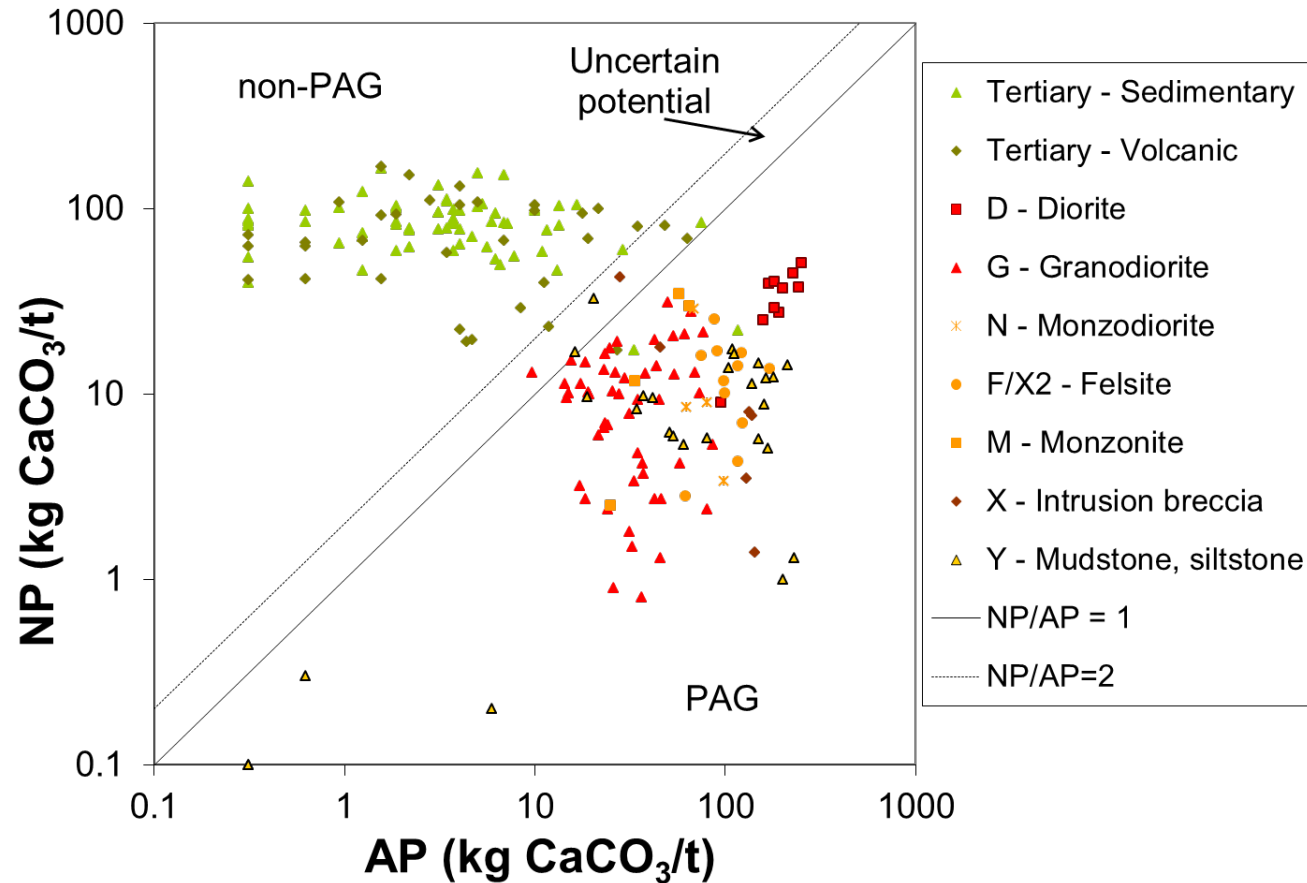
LEGEND

- 2004 sampling programs (PWZ)
 - 2004 supplemental sampling program (PWZ)
 - 2005 sampling program (PWZ)
 - 2007 sampling program (PEZ)
 - 2007 sampling program (overburden)
 - 2008 sampling program (stored bag tests)
 - Other drillholes
 - General deposit location
- PWZ: Pebble West Zone
PEZ: Pebble East Zone
- 2008 sampling program (stored bag tests)
 - Other drillholes
 - General deposit location
- ### Kinetic tests
- Humidity cell
 - Subaqueous column

ARD POTENTIAL OF ROCK

ARD Potential

- Cretaceous mineralized rock is mainly PAG.
- Tertiary rock is mainly non-PAG.

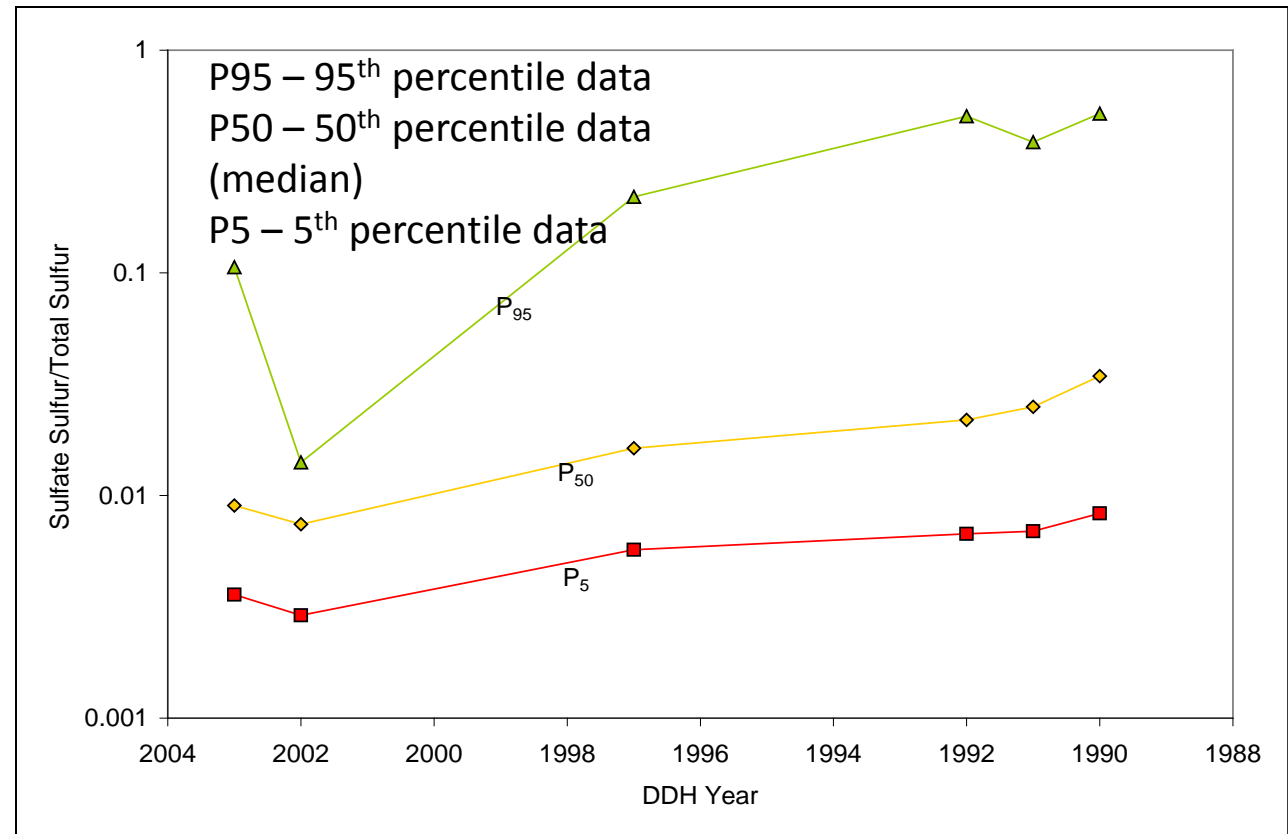


- Charts show West Zone data
- East Zone shows similar results to West Zone

REACTION RATES FOR EXPOSED ROCK

Core Aging Effects

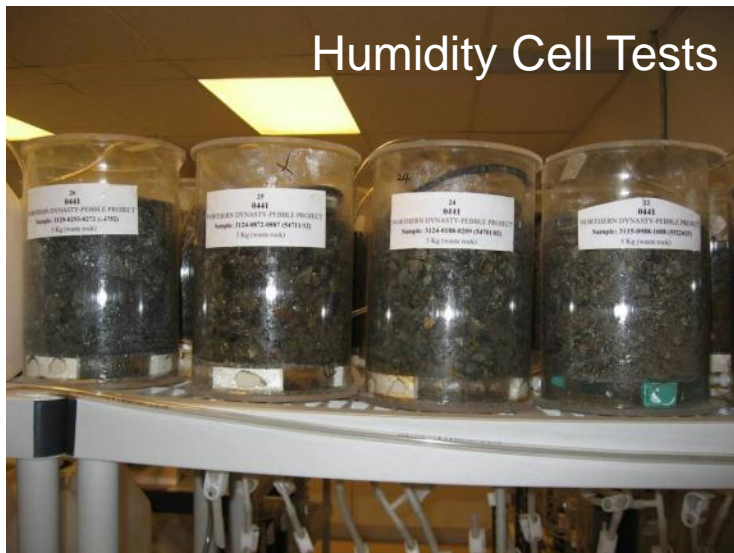
- Increase in sulfate sulfur relative to sulfur as the age of the core increased
- Coincident reduction in NP, development acidic paste pH
- Estimated timescale to acid onset, up to 40 years



Data shown for PWZ pre-T mineralised rock
(stored at site)

Lab Kinetic Test Methods: Rock

Humidity Cell Tests



Bagged Weathering Tests



Subaqueous Columns



Humidity Cell Tests

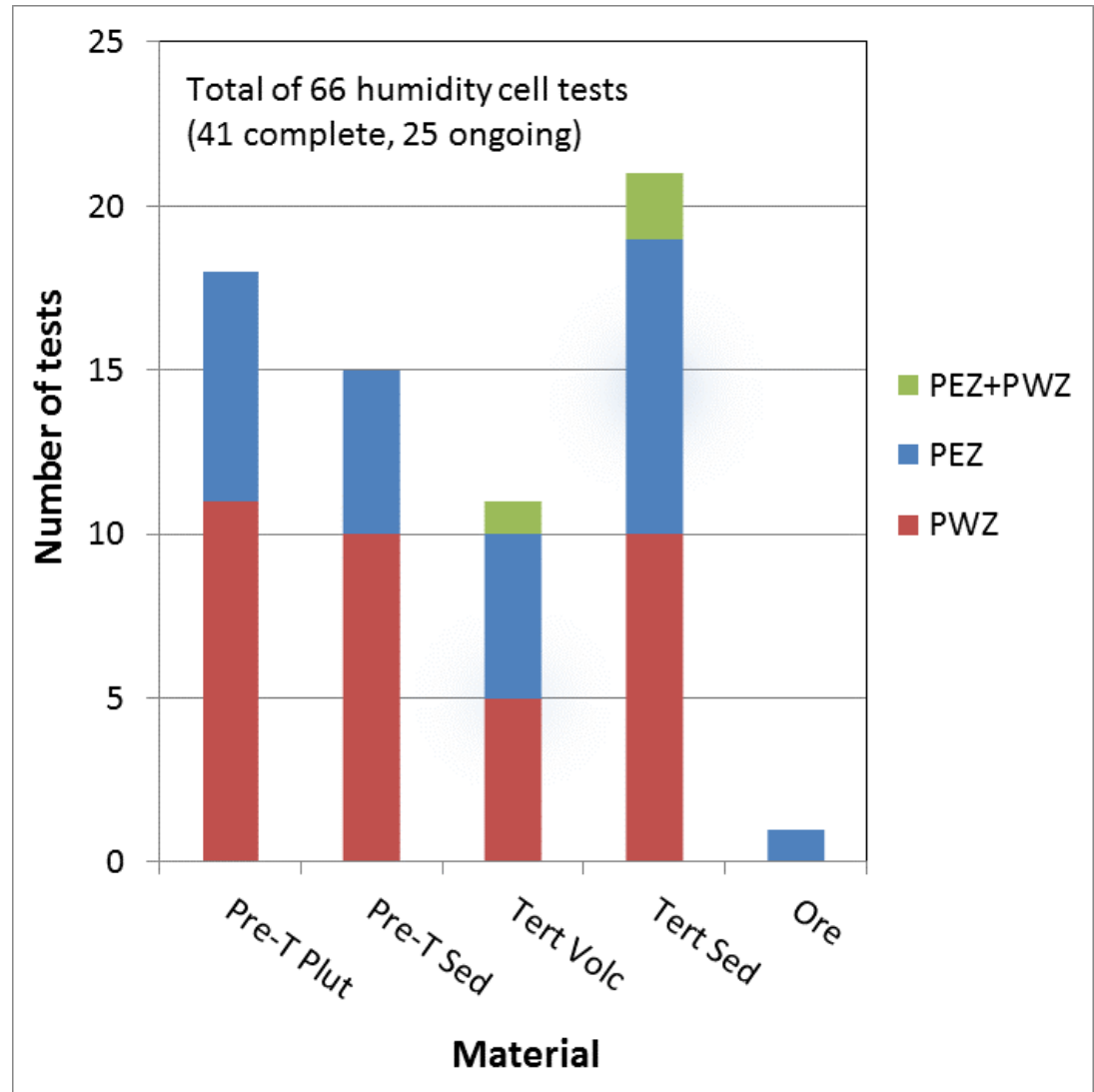
To estimate reaction rates under aerobic conditions

Data relevant to:

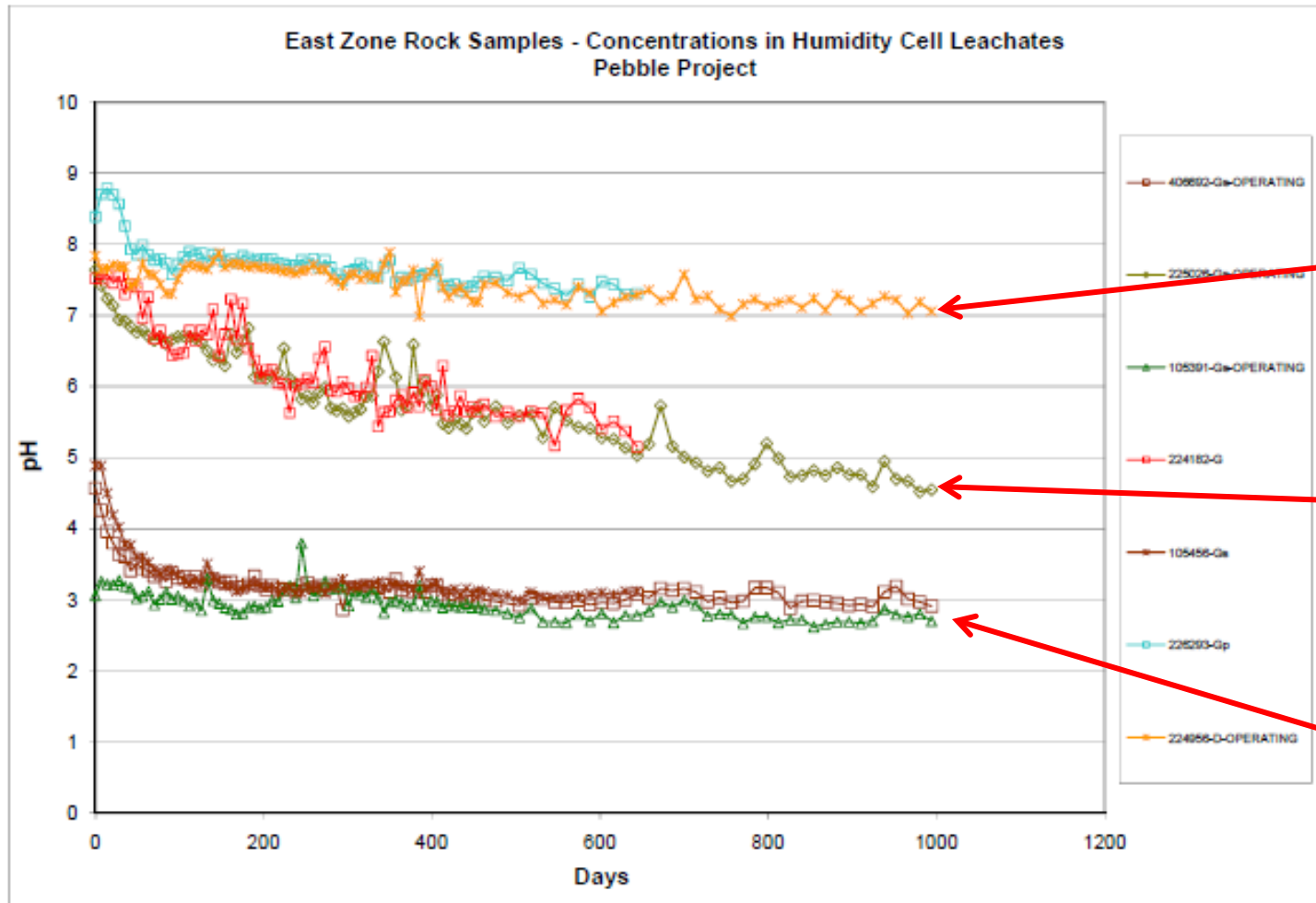
- Waste rock dumps, pitwalls, stockpiles

Samples were selected to cover range of:

- Rock types
- S contents
- Sample 'age' (old core versus fresh core)



Humidity Cell Tests: Example Results



pH-neutral for duration of tests

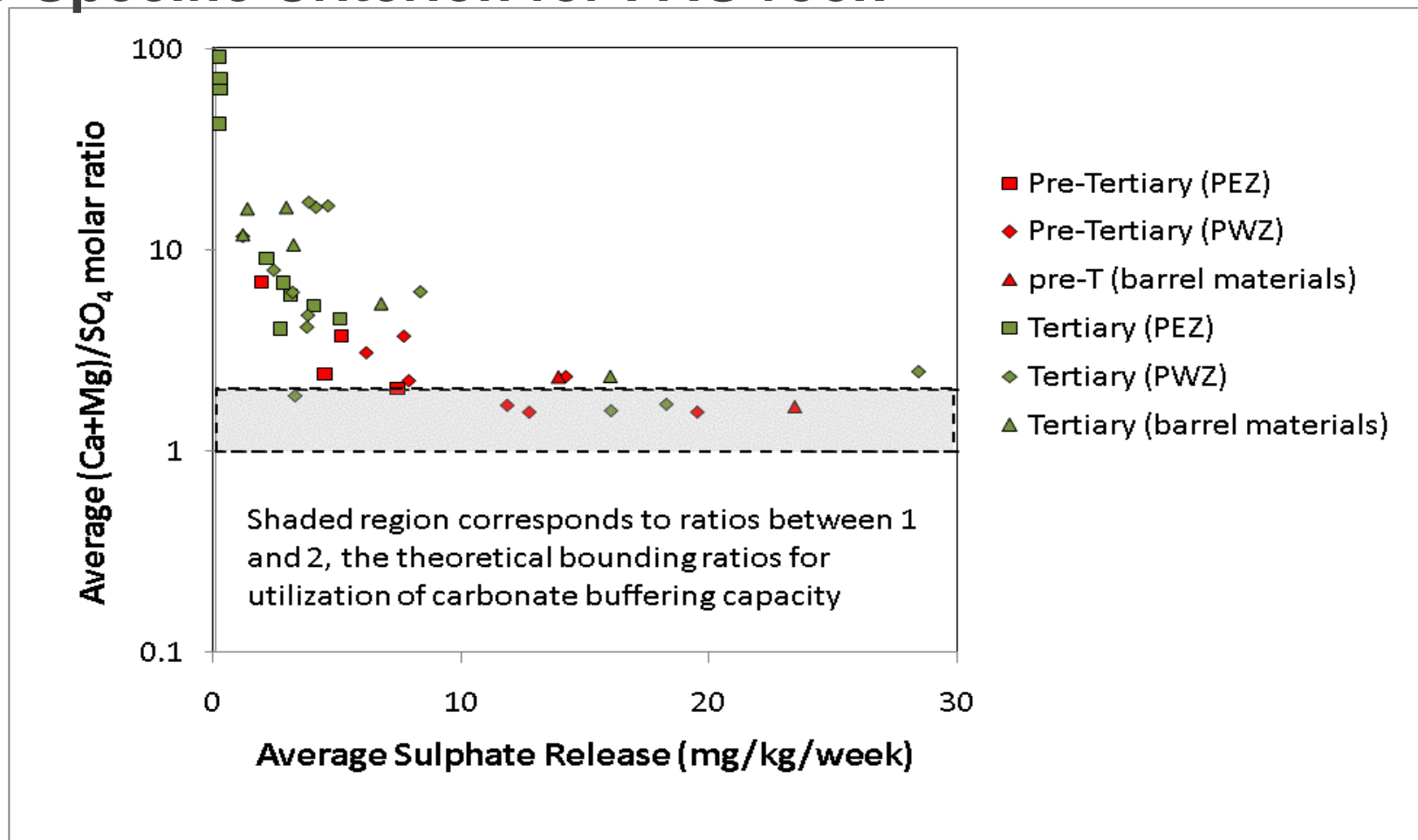
Initially pH-neutral, tending toward acidic pH with time

Immediately acidic

pH plotted as a function of time (days)

Humidity Cell Tests: Rocks

Site-Specific Criterion for PAG rock



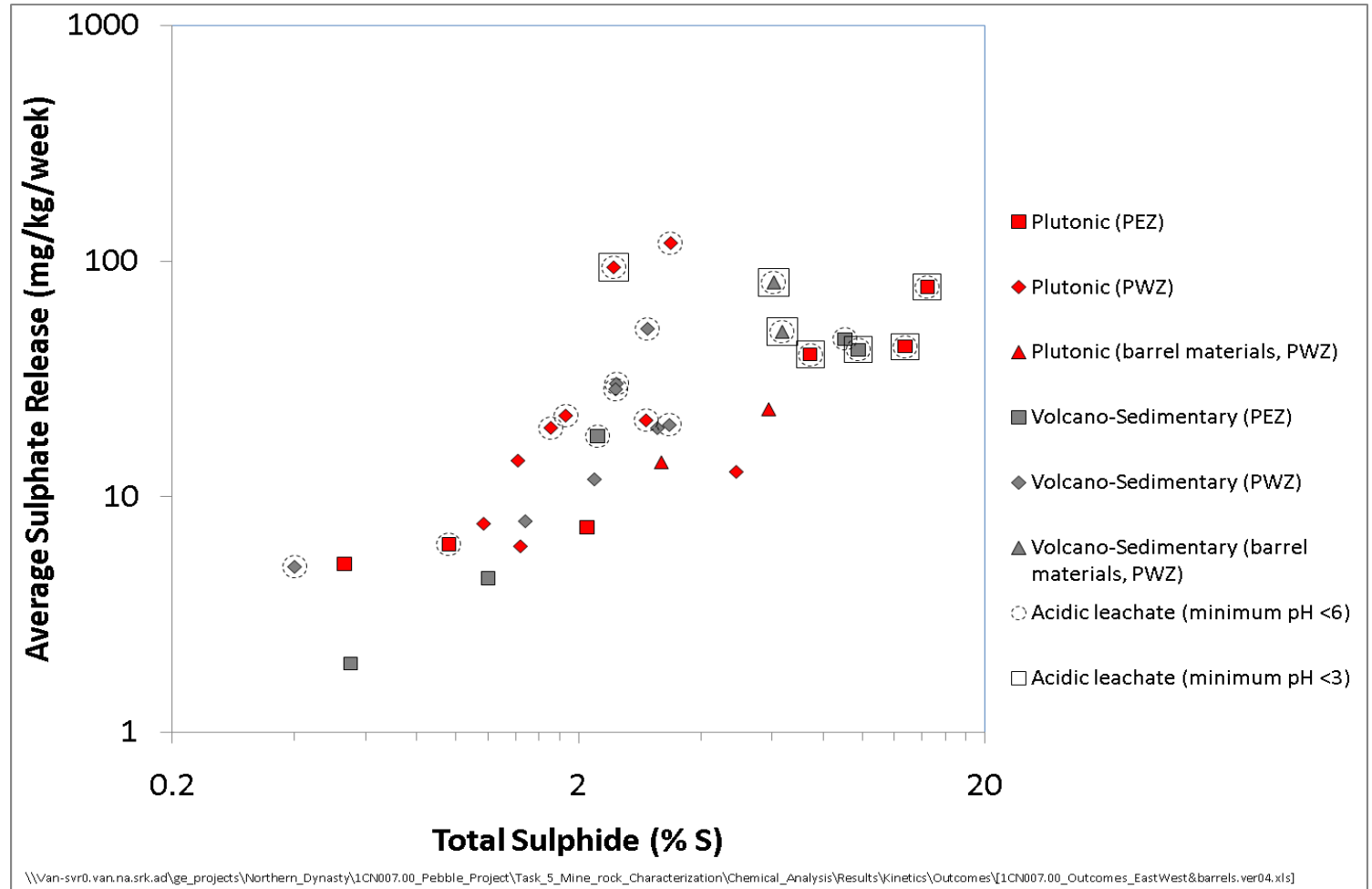
Pebble site-specific NP/AP criteria: 1.6

Equivalent for pre-T and T rock

Humidity Cell Tests: Rocks

Release Rates Compared to Composition - Sulfate

Relationship independent of rock type, leachate pH



Only pre-T data shown

Humidity Cell Tests: Rocks

Timing of Onset to Acid Conditions

- HCT testing (laboratory conditions):

NP/AP	Time to acid onset
<0.1	< 2 years
0.1 to 0.3	3 to 10 year
1.0	> 20 years

- Consistent with core aging effects (site conditions)

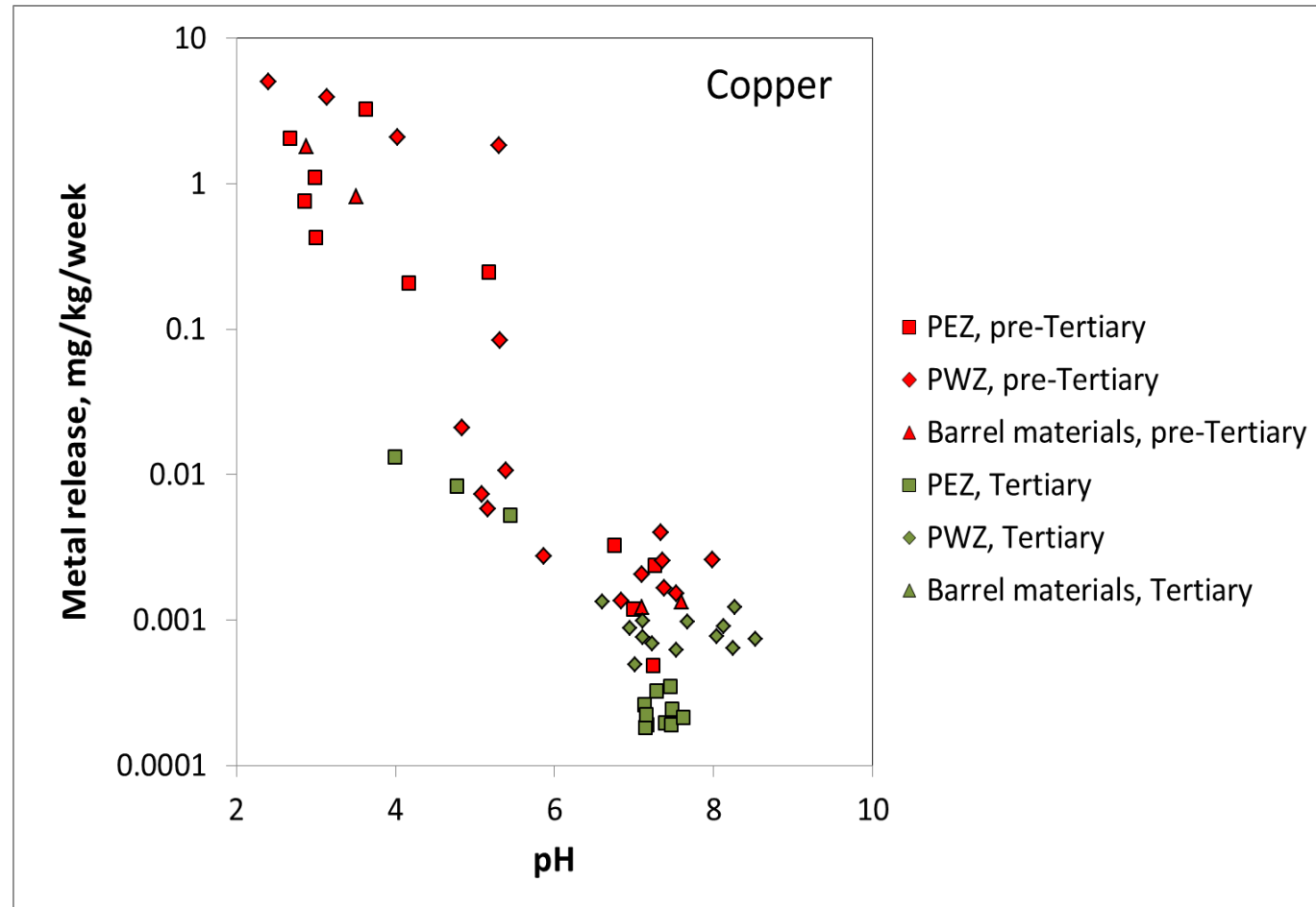
Humidity Cell Tests: Rocks

Controls on Metal Release

Main control, leachate pH, higher release at acid pH

Potential for release linked to PAG materials

Oxyanions: (As, Mo, Se) - significant release at neutral pH

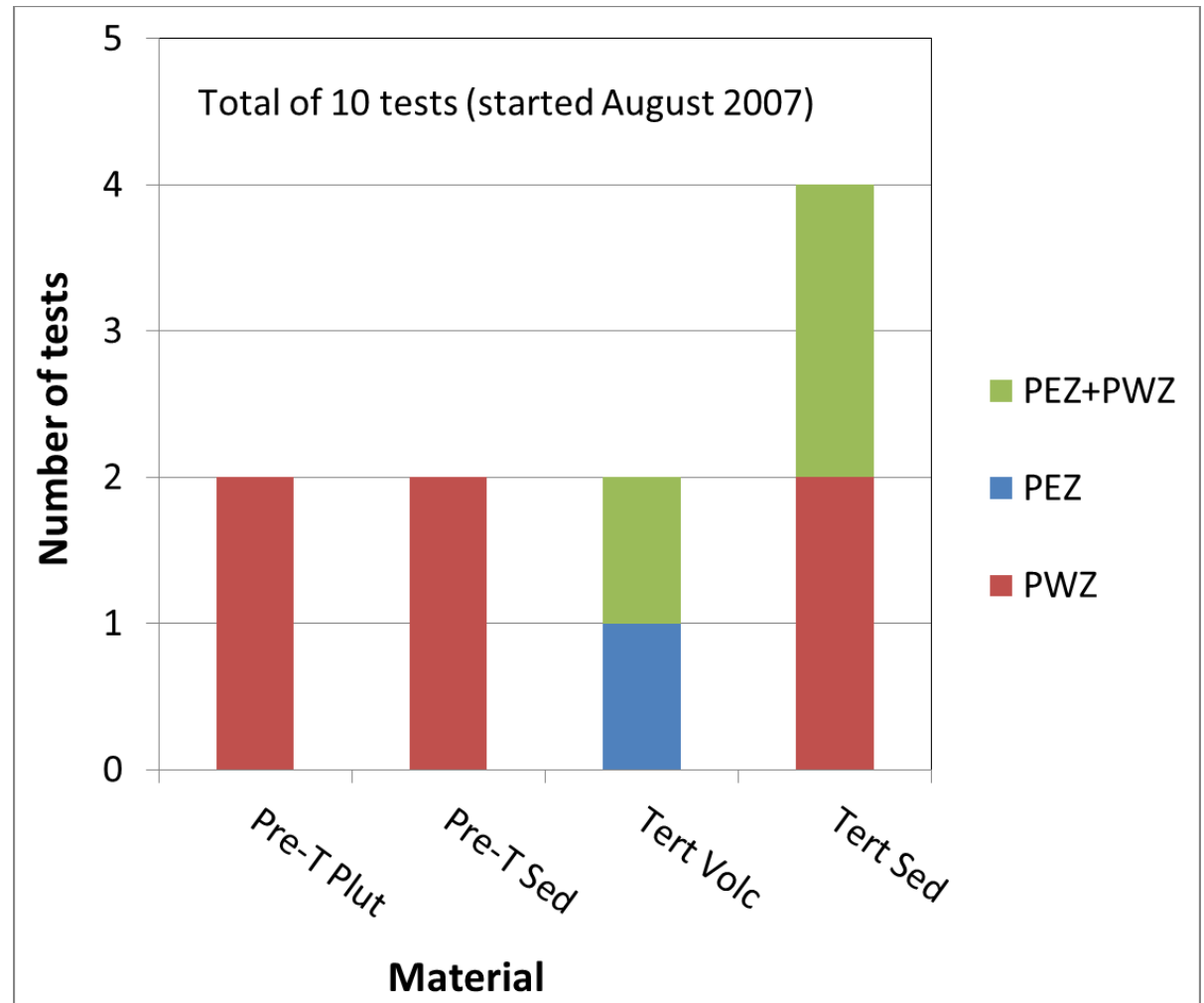


Field Weathering Tests

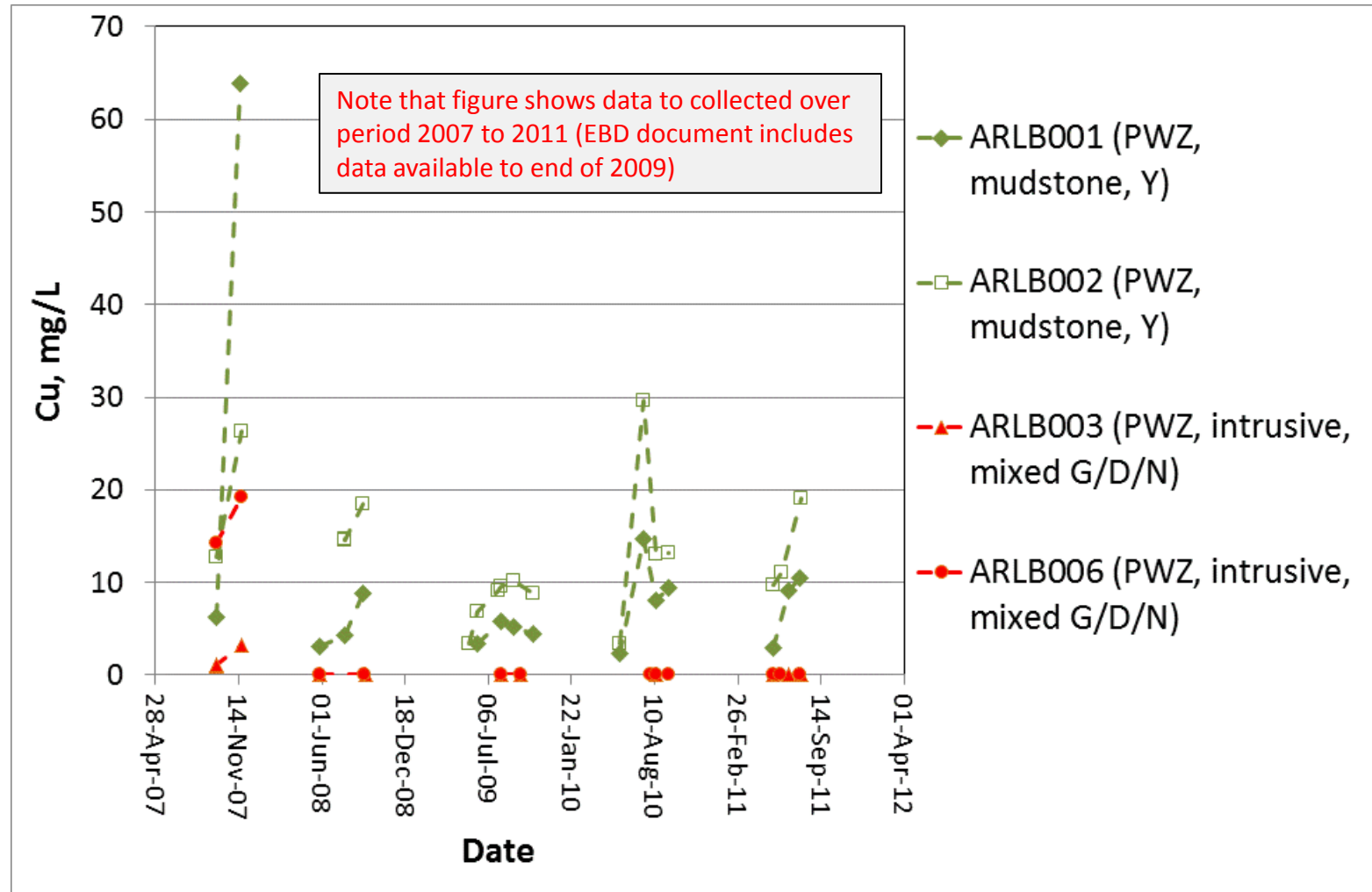


Field Weathering Tests

- To evaluate leaching behavior under field conditions
- Comparison with laboratory conditions
- Focus on Tertiary and West Zone Pre-Tertiary.



Field Weathering Tests: Example Results

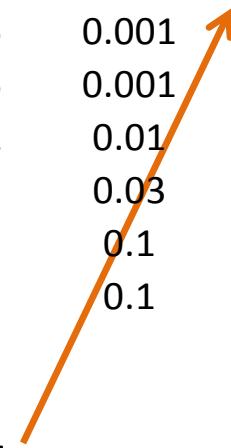


Field Weathering Tests: Summary of Data from 2007 to 2011

				Average concentration, mg/L					
	Barrel #	Rock Type	Zone	pH	SO ₄	As	Mo	Se	Cu
Pre-Tertiary	B03	G/D/N	West	7.67	1418	0.0009	0.03	0.2	0.5
	B06	G/D/N	West	7.55	764	0.002	0.1	0.2	2.8
	B01	Y	West	4.38	566	0.0004	0.0001	0.06	10.1
	B02	Y	West	4.50	769	0.0005	0.00006	0.03	13.0
Tertiary	B10	TA+TB	East	7.85	33	0.001	0.05	0.001	0.002
	B09	TD	East+West	7.85	12	0.001	0.05	0.001	0.002
	B07	TC/TF	West	8.46	827	0.0006	0.02	0.01	0.002
	B08	TC/TF	West	8.50	329	0.0005	0.1	0.03	0.001
	B04	TW	East+West	8.48	315	0.004	0.2	0.1	0.004
	B05	TY	East+West	7.87	661	0.007	0.1	0.1	0.003

Note that calculations are based on data to 2011 (EBD document based on data to 2009)

Highest Cu,
coincident
with acid pH



Field Tests: Observations

Two barrels have acidic leachate

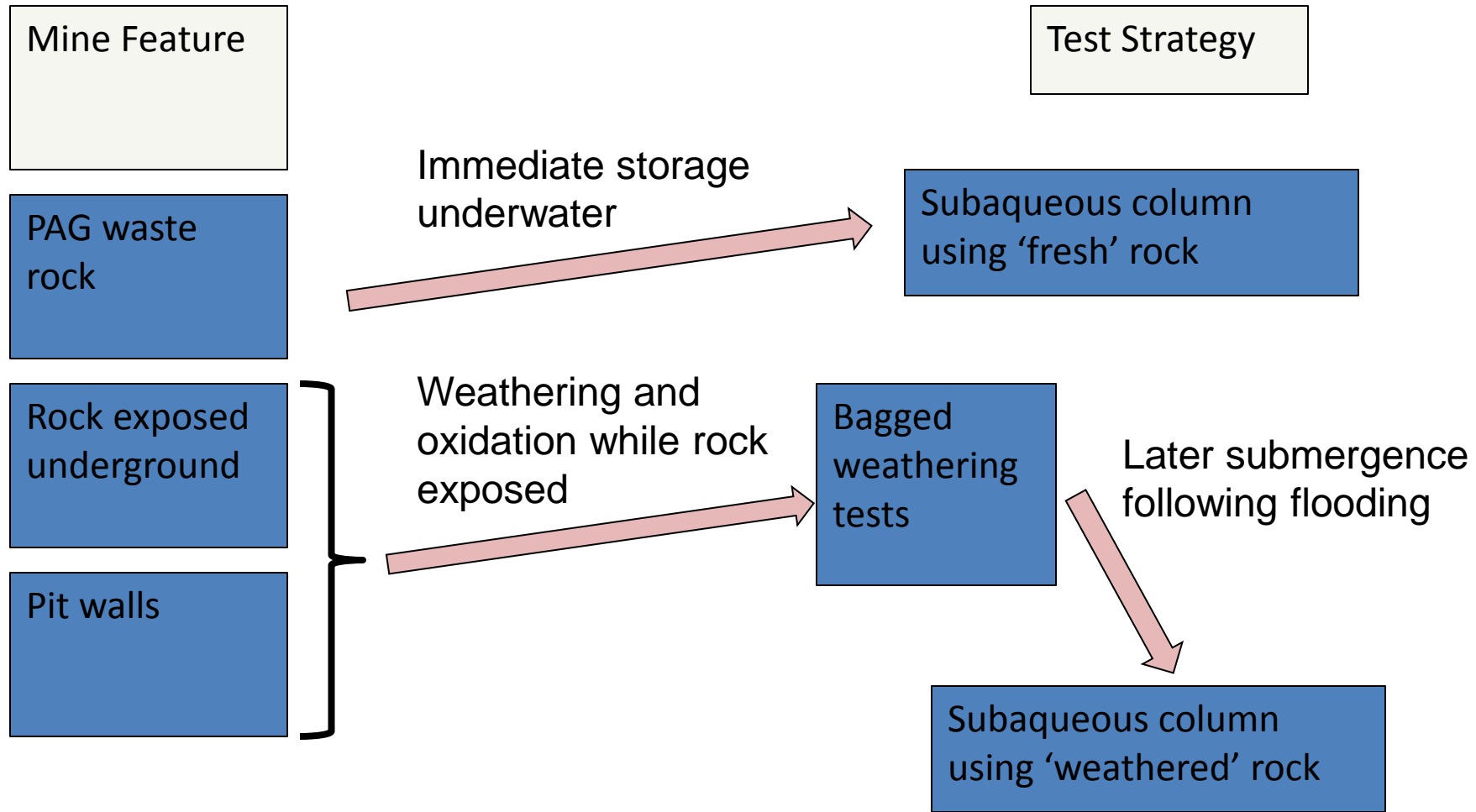
- Barrels #1 and #2 – Pre-T sedimentary rock.
- Similar result in lab tests.

Broadly similar leachate chemistry for field and lab tests

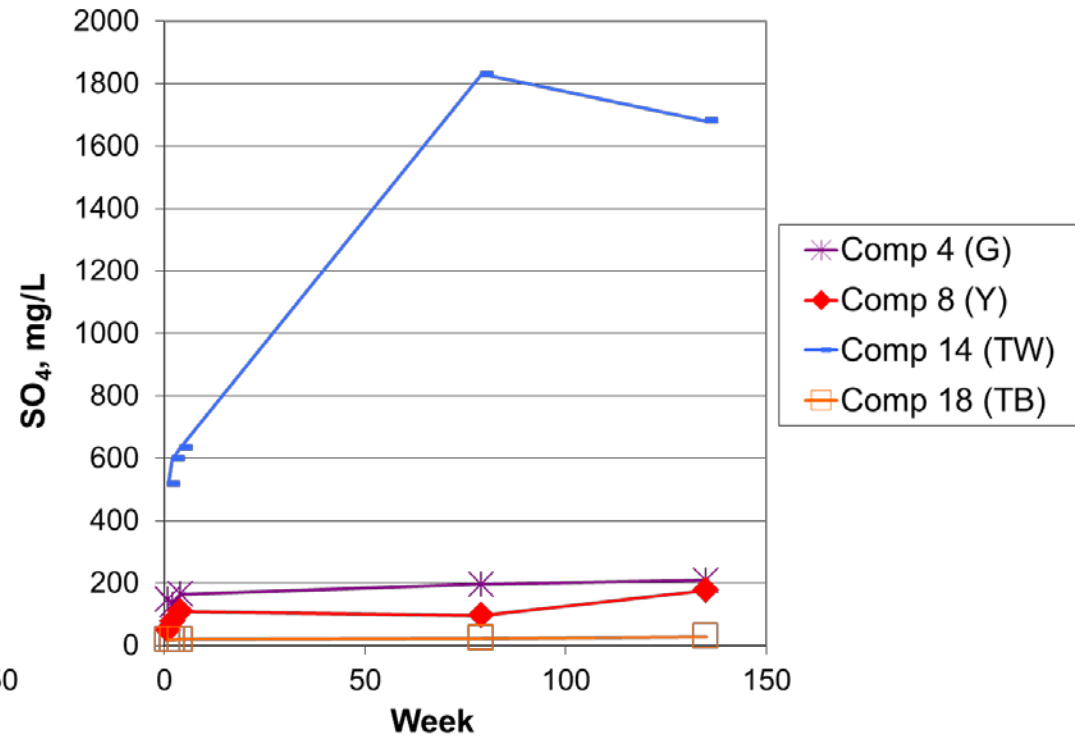
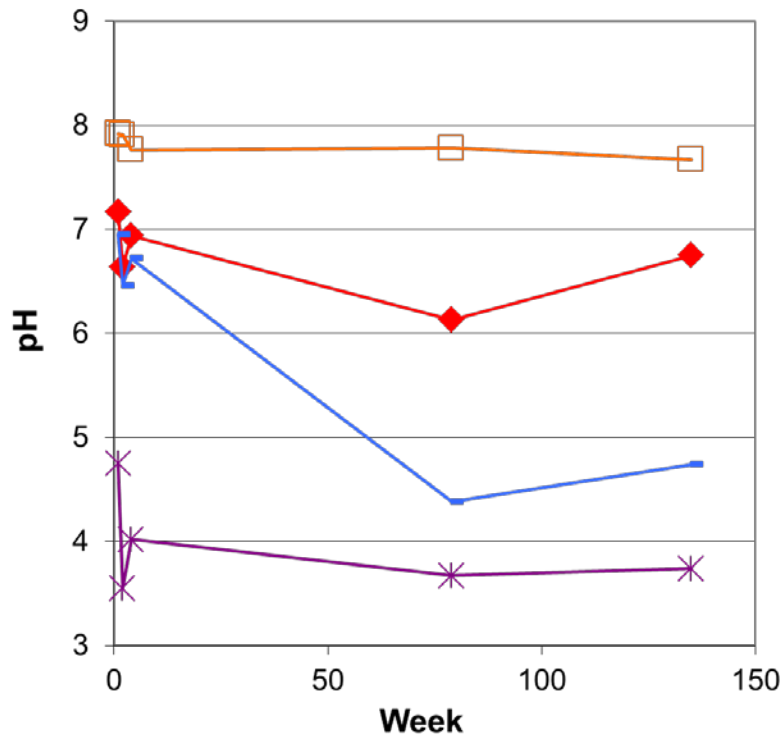
- As, Mo, Se associated with leaching of Pre-Tertiary and Tertiary.
- Higher metals (e.g. Cu) associated with Pre-T materials.

REACTION RATES FOR SUBMERGED ROCK

Reactions Underwater: Study Design



Stored Bag Tests: Example Results



Shake flask extraction tests as a function of time:

- Some tests indicate production of acidic reaction products in the stored bags
- Coincident increase in soluble sulfate

Note that EBD document gives data to Week 4 (data available in 2009). Figures above show data for subsequent extraction tests in 2010 and 2011

Underwater Reaction Rates Subaqueous Columns

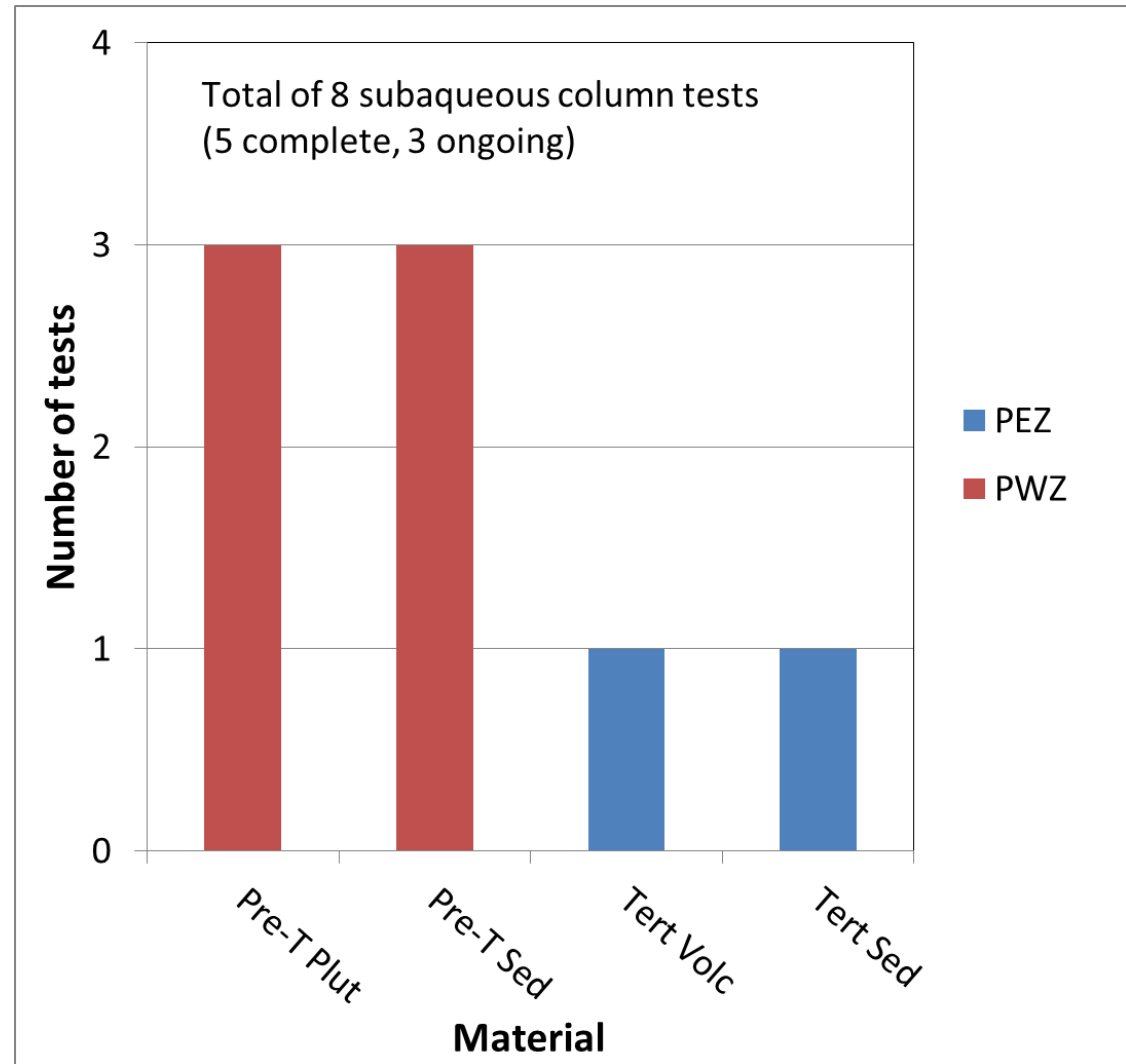


Subaqueous Columns: Waste Rock

To estimate reaction rates under saturated conditions

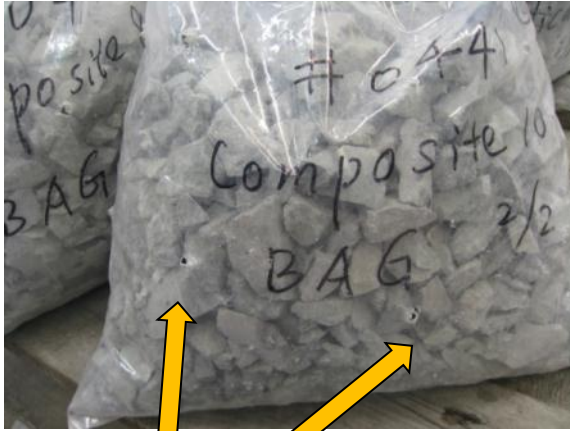
Samples selected to cover range of:

- Rock types
- Sulfur contents



Subaqueous Columns: Design Aspects

Bagged Weathering Test



Periodic removal of sub-samples

Stored in moist, aerobic conditions
Aeration holes to ensure O_2 and H_2O availability

Shake Flask Extraction Test

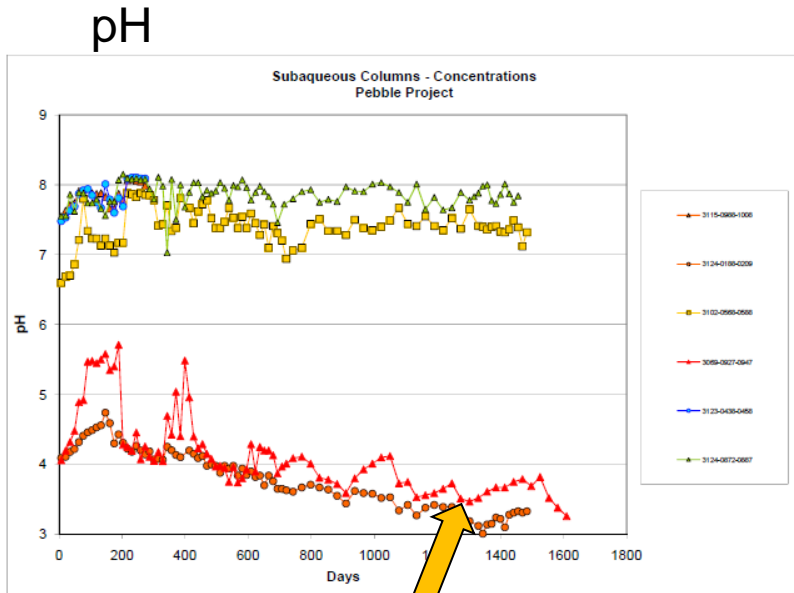
To quantify readily soluble salts

Subaqueous Columns



As accumulation of salts decreases

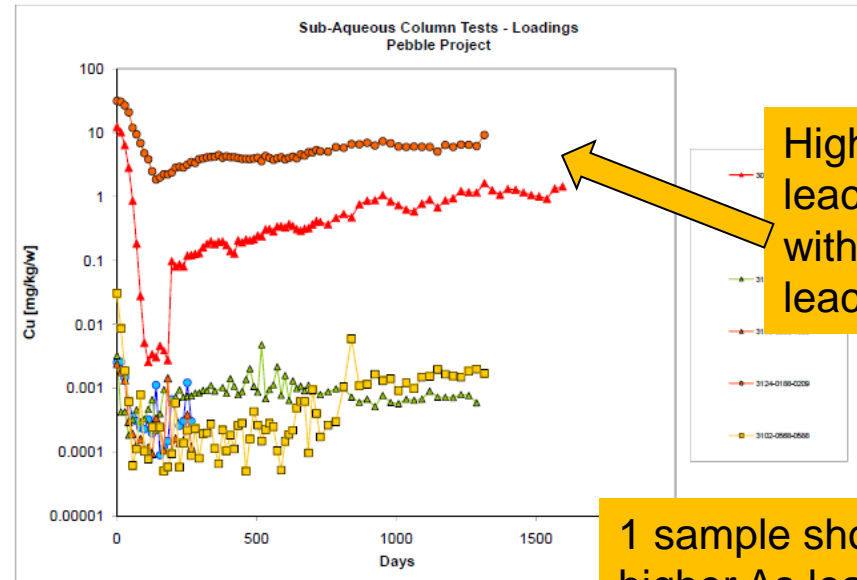
Subaqueous Columns: Outcomes Fresh PAG Rock Tests



2 samples acidic when submerged

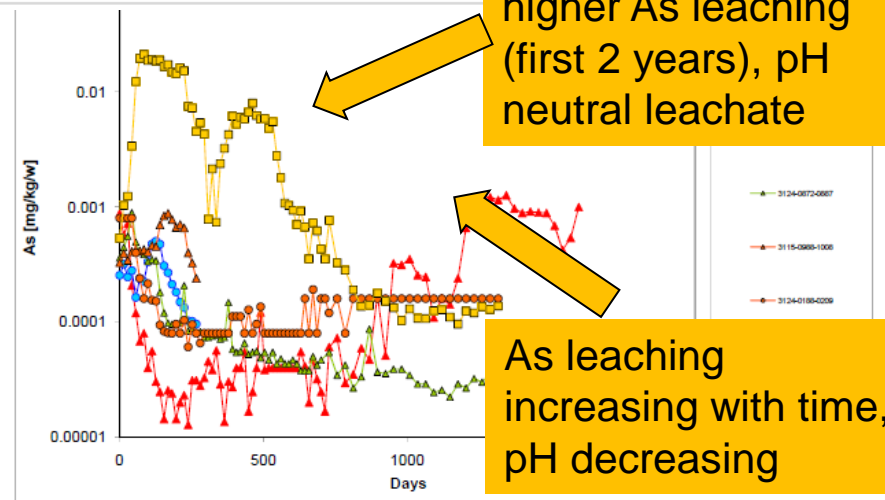
Only PWZ tests shown

Cu



Higher Cu leaching with acid leachate

As



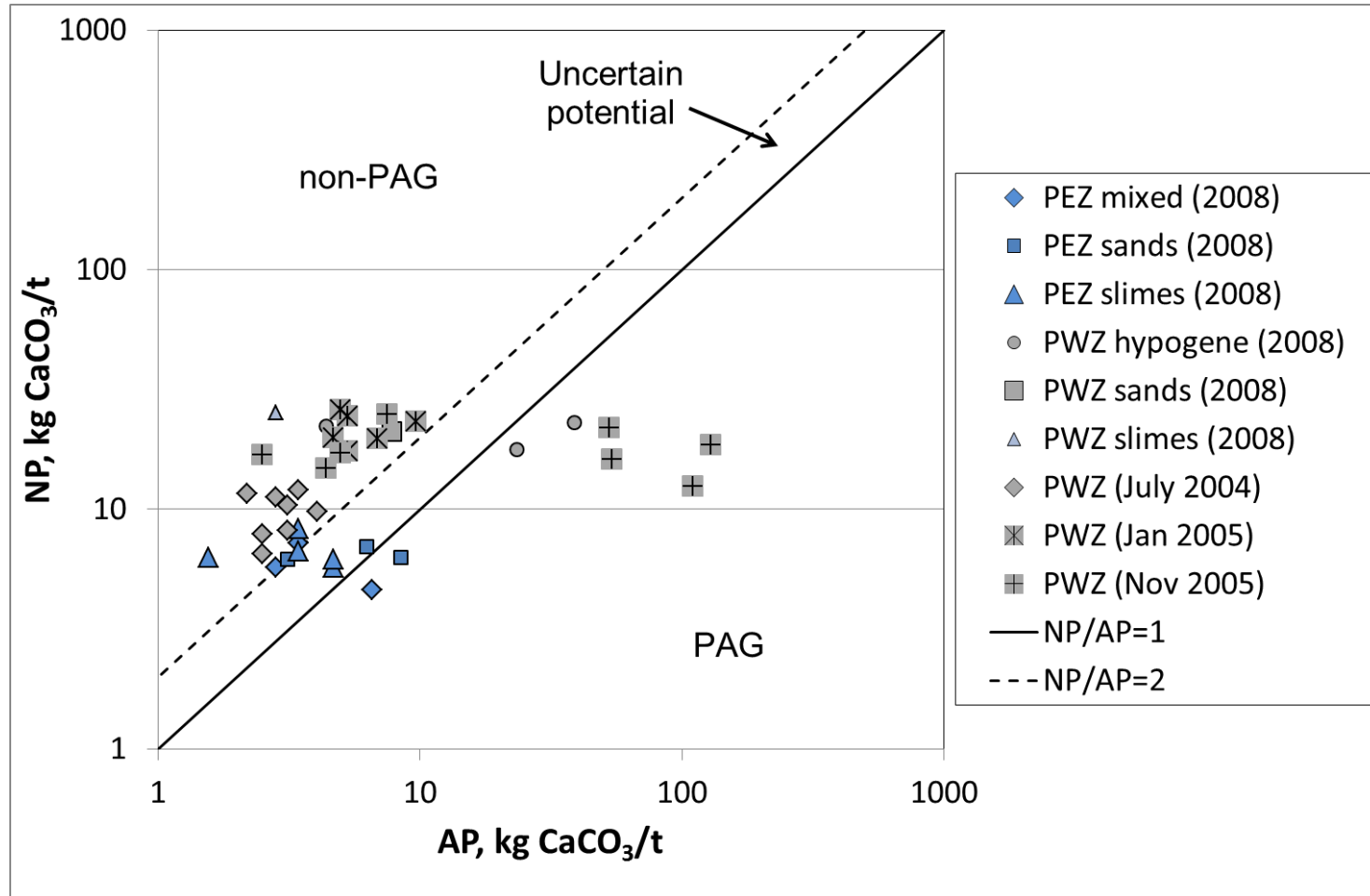
1 sample showed higher As leaching (first 2 years), pH neutral leachate

As leaching increasing with time, pH decreasing

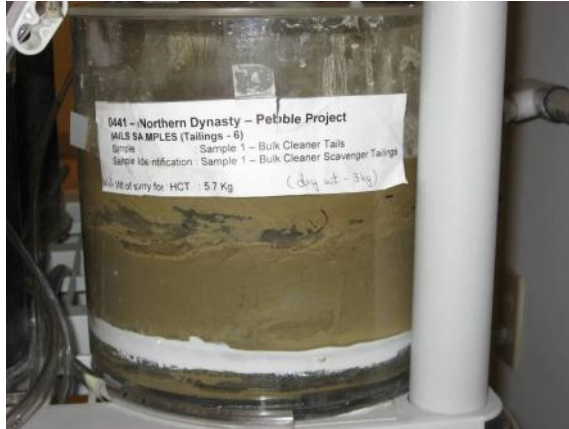
GEOCHEMICAL CHARACTERIZATION OF BULK TAILINGS

ABA (Bulk Tailings)

Non-PAG
tails low S
tailings have
been
produced



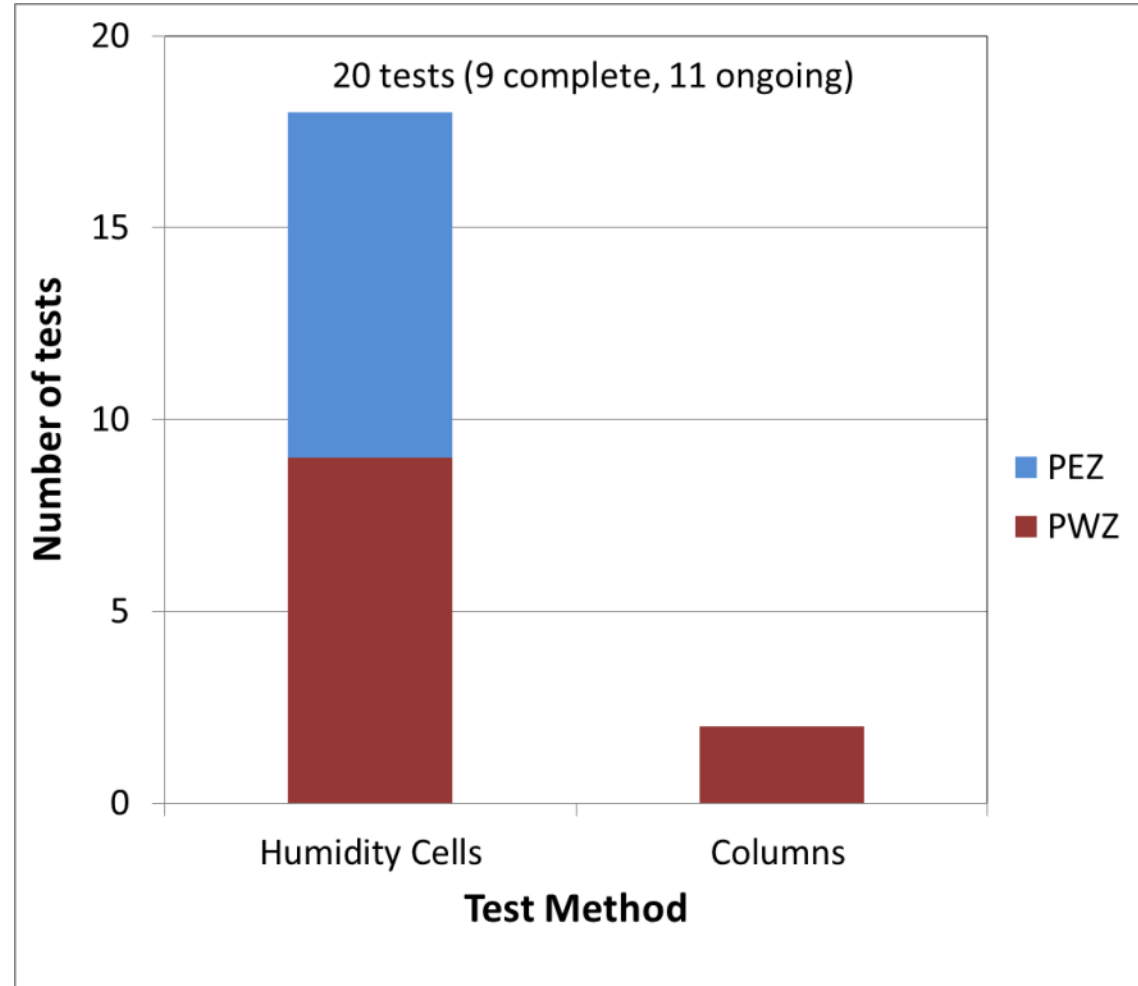
Kinetic Test Methods: Tailings



Humidity Cell Tests

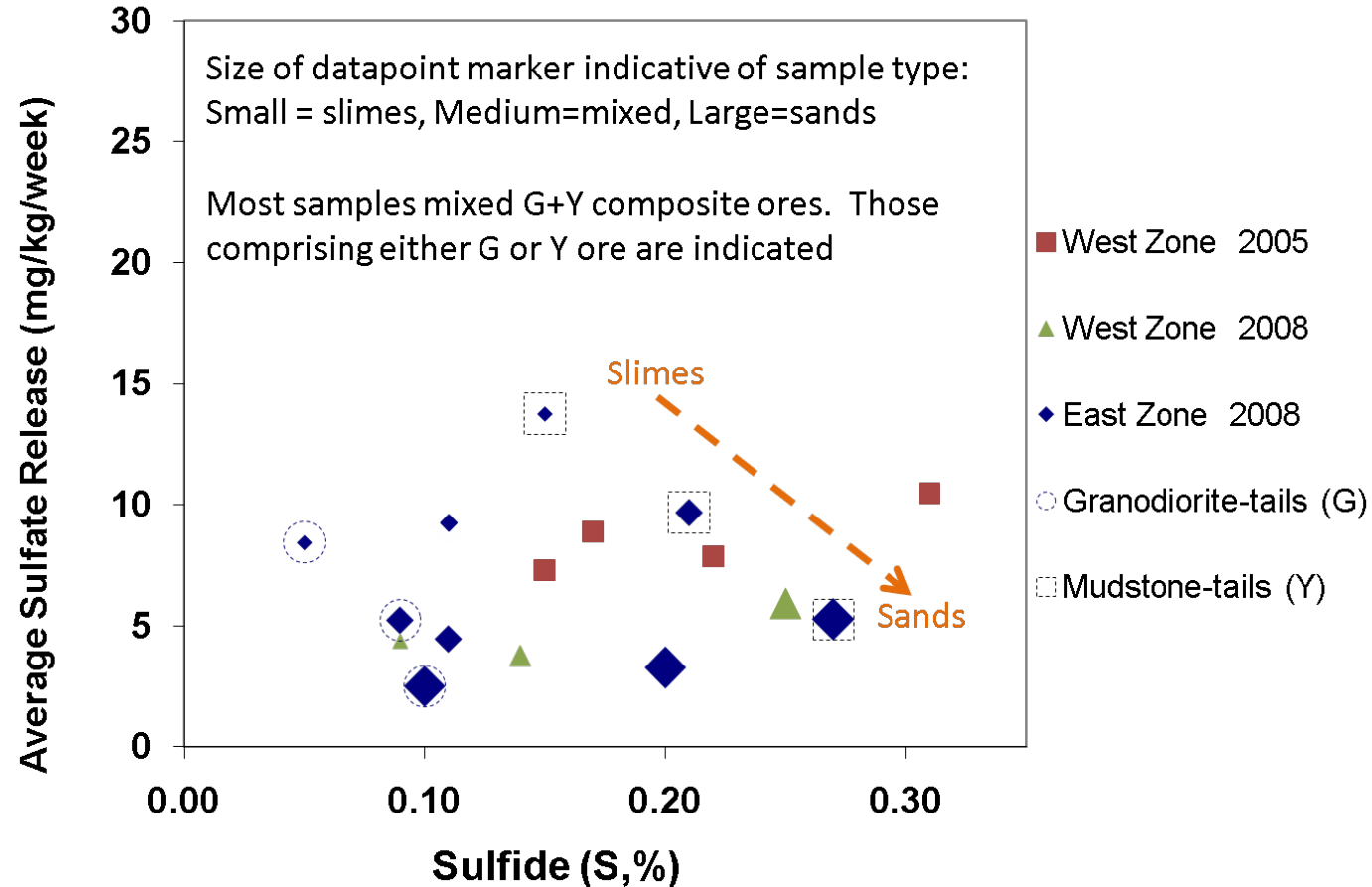


Leach Columns



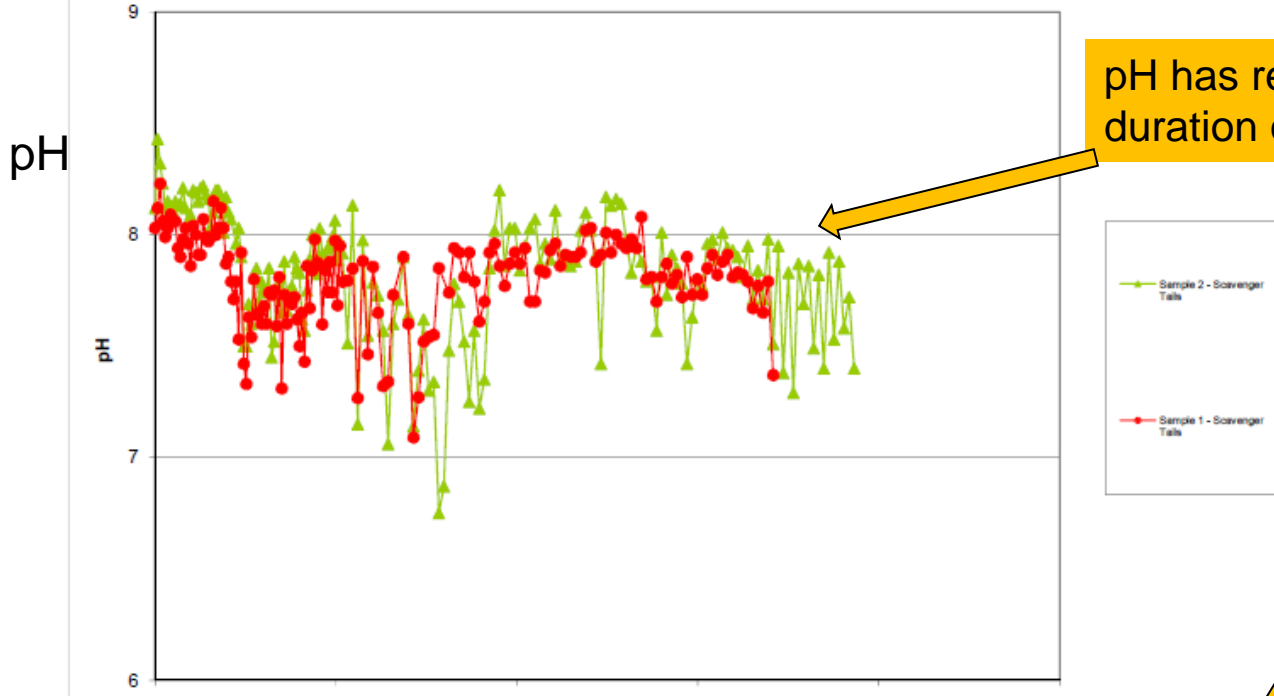
Humidity Cell Tests: Tailings

- Oxidation rates related to S content and particle size.
- To-date, no acidic leachates



Leach Columns: Outcomes

Tailings - COL - Concentrations
Pebble Project



pH has remained near-neutral for duration of tests

Sulfate release towards low end of range shown by humidity cell tests



mg/kg/week

S2-Scavenger Tails

3.57

S1-Scavenger Tails

2.94

Summary

- Waste rock
 - Large database of static test data have demonstrated distinctive characteristics of waste rock type.
 - Kinetic test data are suitable for input into waste rock management planning and water quality predictions.
 - Comparative data from field tests allow lab test data to be linked to field conditions.
- Tailings
 - Testing of simulated tailings indicates low ARD potential of bulk tailings.