



**PEBBLE PROJECT  
ENVIRONMENTAL BASELINE DOCUMENT  
2004 through 2008**

**CHAPTER 48.  
POWER  
Cook Inlet Drainages**

PREPARED BY:  
KEVIN WARING & ASSOCIATES

# TABLE OF CONTENTS

TABLE OF CONTENTS .....48-i

LIST OF FIGURES .....48-ii

48. Power ..... 48-1

    48.1 Introduction ..... 48-1

    48.2 Study Objective ..... 48-1

    48.3 Study Area ..... 48-1

    48.4 Scope of Work ..... 48-1

    48.5 Methods ..... 48-1

    48.6 Results and Discussion ..... 48-1

    48.7 Summary ..... 48-2

    48.8 References ..... 48-2

## FIGURE

Figure 48-1, Power Study Area, Cook Inlet Drainages, General Land Ownership

## 48. POWER

### 48.1 Introduction

This chapter documents key features of the existing electrical power and petroleum fuels supply systems in the Cook Inlet drainages of the western Cook Inlet coast.

### 48.2 Study Objective

The study objective was to describe existing facilities for supply of electrical power and petroleum fuels in the study area.

### 48.3 Study Area

The Cook Inlet drainages study area for the power study (Figure 48-1) consists of that portion of the Kenai Peninsula Borough in the Cook Inlet drainages on the western Cook Inlet coast between Lake Clark National Park and McNeil River State Game Refuge. The Kenai Peninsula Borough's jurisdictional boundary on the western Cook Inlet coast follows section lines that closely approximate the Cook Inlet/Bristol Bay drainages boundary. For purposes of this report, the difference between the jurisdictional and drainages boundaries is immaterial.

### 48.4 Scope of Work

The scope of work was to describe existing facilities for supplying electrical power and petroleum fuels in the study area.

### 48.5 Methods

The method of study involved reviewing maps, land records, and other public agency data sources to verify the presence or absence of settlements and energy facilities in the study area. Because of the undeveloped character of the study area, there are no substantive studies of local energy facilities.

### 48.6 Results and Discussion

No permanent, year-round settlements exist on the western Cook Inlet coast between Cape Douglas and Tuxedni Bay. There are two clusters of seasonally occupied Native allotments and homesites: one at Cottonwood Bay south of Williamsport, and another near Seal Spit in Chinitna Bay (Figure 48-1). Otherwise, only a few scattered allotments and homesites exist. There are no public or large private energy facilities in the study area.

## 48.7 Summary

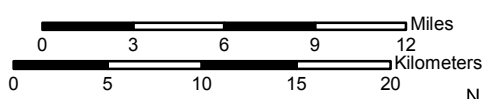
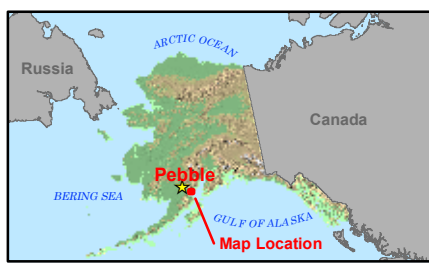
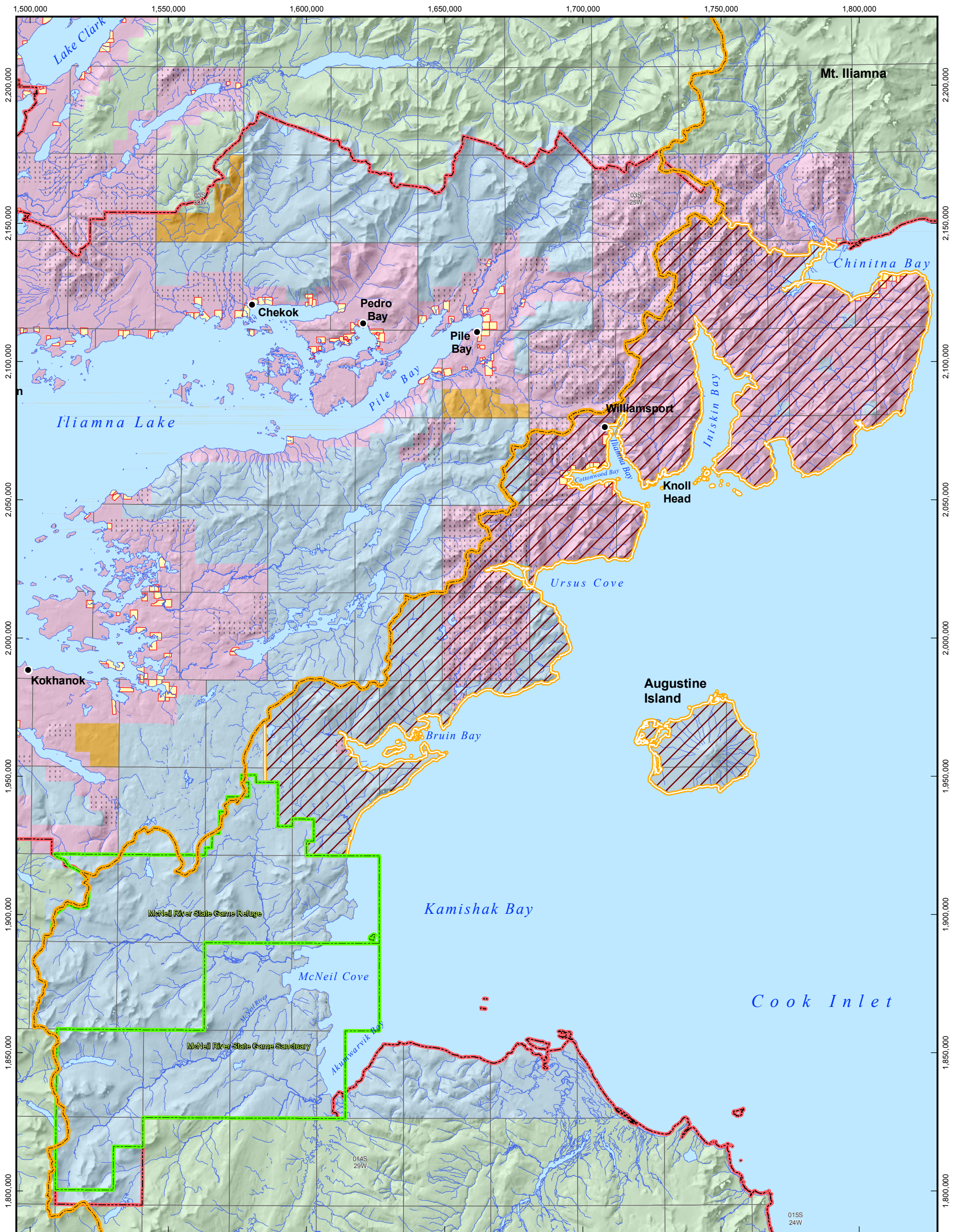
This chapter describes energy infrastructure in the Cook Inlet drainages study area. There are no permanent settlements or existing energy facilities in the study area.

## 48.8 References

Bureau of Land Management (BLM). 2006. General Land Status Pattern for Alaska, Land Information System Database. U.S. Department of the Interior, BLM Branch of Mapping Services, Anchorage, AK.

BLM et al. Various. BLM's General Land Status Pattern for Alaska, Land Information System Database, with supplemental data from land plats obtained from BLM and the Alaska Department of Natural Resources.

FIGURE



Scale 1:400,000  
 Alaska State Plane Zone 5 (units feet)  
 1983 North American Datum

**Legend**

- Bristol Bay/Cook Inlet Drainages Boundary
- McNeil River State Game Refuge/Sanctuary
- Cook Inlet Drainages Study Area
- General Land Status**
- Native Patent or Interim Conveyance
- Native Selected
- State Patent or Tentative Approval
- State Selected
- National Park Service
- Bureau of Land Management
- Native Allotments/Private Lands

Federal, State, and Native Lands (BLM 2006)  
 Native Allotments/Private Lands (BLM 2006, RDI 2005)



Figure 48-1  
 Power Study Area  
 Cook Inlet Drainages  
 General Land Ownership

File: RDI\_KW\_CI\_Fig48-1\_11x17P\_1of1\_D05.mxd Date: June 18, 2010

Version: 5 Author: RDI-LS