

Get information on it, one

TAL-010

Pass Creek Roadhouse near Rainy Pass

Reed, 1965, 10: Anderson Bos. owners; [This isn't from Reed
[REDACTED]]

In 1920 when Reed came thru it was a long ramshackle log building facing south with a big cache over pelings behind

Ostler, 1951, 1911: Sit on road heading over Rainy Pass at 62°16' N, 142°45' W. Usaint. road. Happy Pass. Roadhouse reported to be by USGS, so called because of its location on the south slope of Rainy Pass

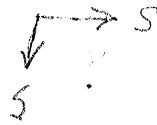
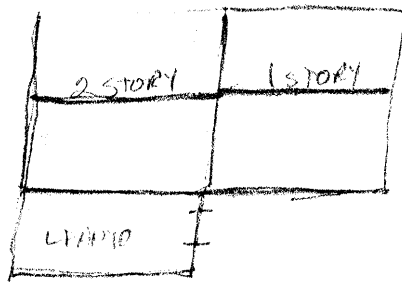
Annual Report Alaska R. Comm, 1922 (part 2), 40: states a phone line installed between Pontell's cabin near timber line on south slope of Rainy Pass to Anderson's R. H. near summit, a distance of 12 mi

Bebe

Bebe
(1880-1920)



(as of 1920)



It is now seen as being part of the old Red
Bebe's another old building - north of
the summit but was again removed and
falling down by 1920.