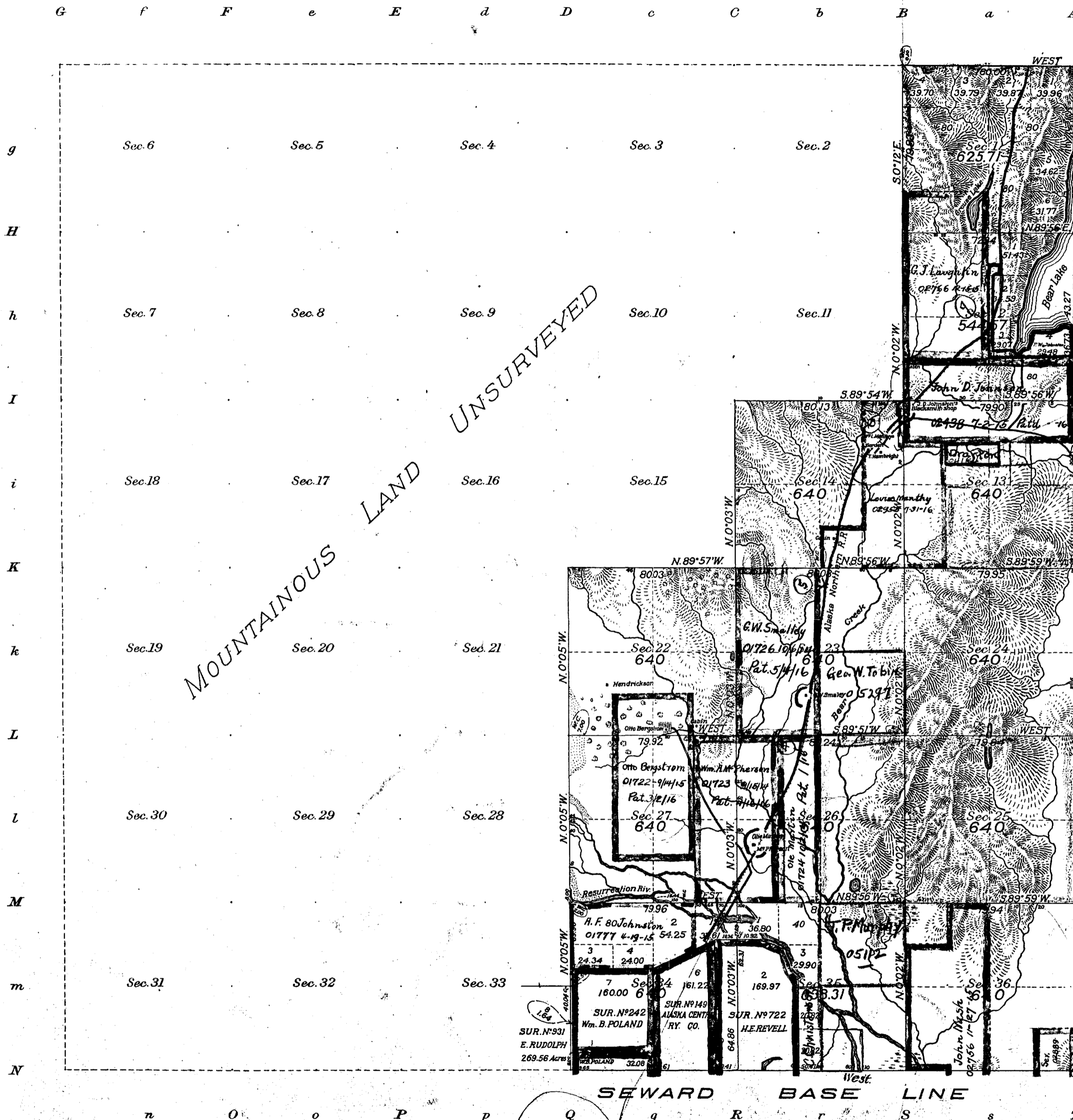


Township N^o. 1 North, Range N^o. 1 West of the Seward Meridian, Alaska.



MOUNTAINOUS LAND UNSURVEYED

Areas in Acres	
Public Land	7618.82
Indian Reservation	
Indian Allotments	
Claims	589.77
Water Surface	110.73
Total Area	8319.32

LAT: 60°07'25.789" N.
LONG: 149°21'53.097" W.
Scale 40 Chains to an inch
Mean Magnetic Declination _____

Surveys Designated	By Whom Surveyed	Amount of Surveys			When Surveyed			
		No.	Date	Mls.	chs.	lks.	Began	Completed
Subdivision	John P. Walker, U.S.S.	Instr.	April 11, 1911	24	72	29	May 24, 1911	June 23, 1911
	G. G. M ^o Daniel, U.S.T.							
Meanders	"			1	64	40	June 22,	
South bdy	"			3	00	00	May 10,	June 15
East "	"			6	00	00	May 10,	June 15
North "	John P. Walker, U.S.S.			1	00	00	June 16,	June 16

The above map of Township No. 1 North Range No. 1 West of the Seward Meridian, Alaska is strictly conformable to the field notes of the survey thereof on file in this office, which have been examined and approved.

U. S. Surveyor General's Office.
Juneau, Alaska, June 16, 1914

Charles E. Davidson
Surveyor General.

M.S. Calcutt, S.T. Fleming