



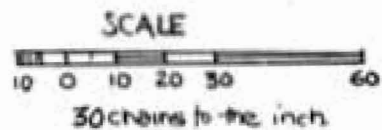
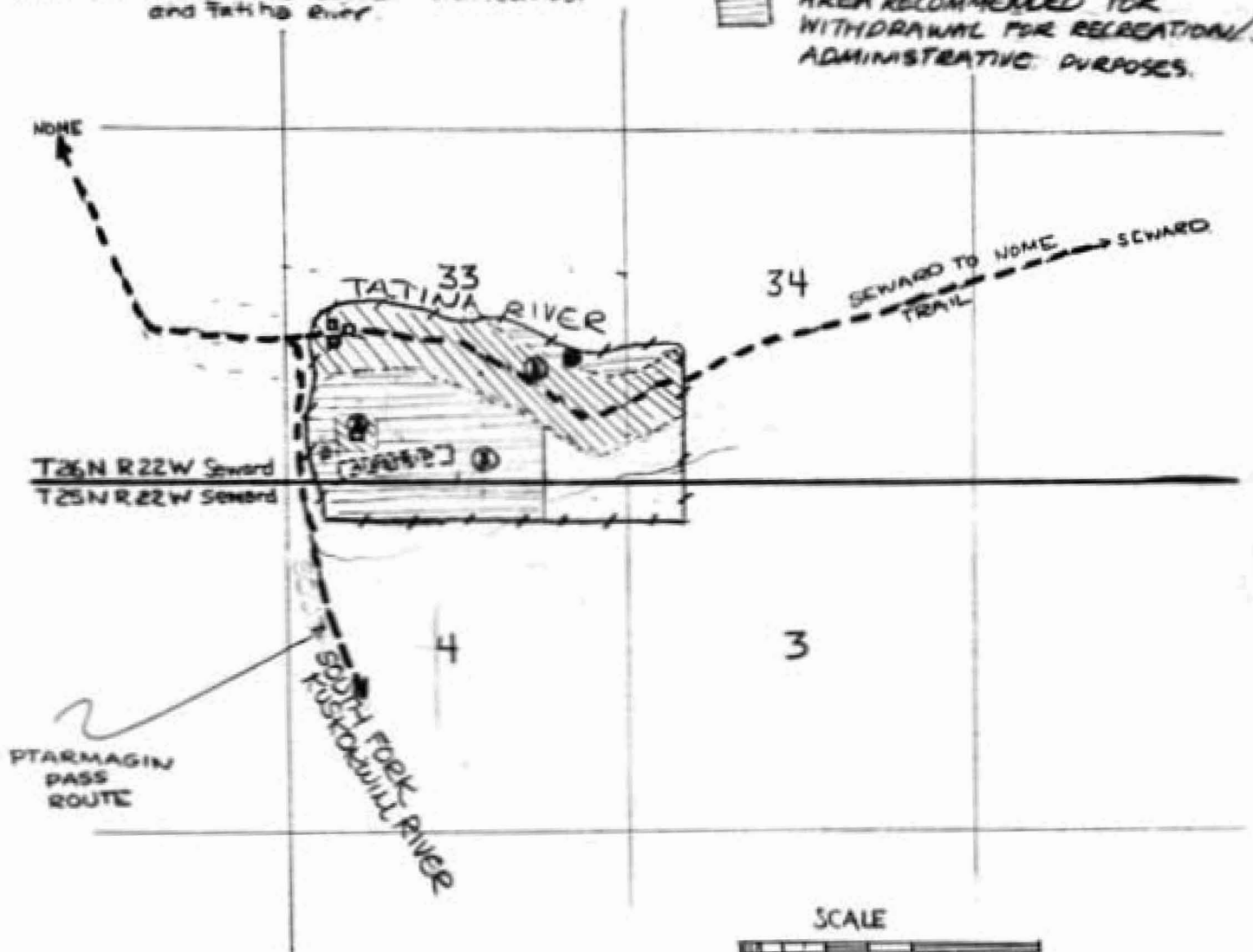
# RHON RIVER ROADHOUSE

## Sketch Map

- Area ① 1000' Trail Corridor held as public right of way, nominated to National Register of Historic Places (includes Level 3 Historic Site)
- Area ② Nomination - National Register of Historic Places Site - CCC Cabin
- Area ③ Area recommended for retention as recreation site, including airstrip, sites suitable for caretaker cabin, wood lot.
- Area ④ Buffer area between trail corridor and Tatina River.

### LEGEND

- HISTORIC TRAIL SEGMENTS
- |---|---|--- BOUNDARY - ANS 131
-  AREA RECOMMENDED FOR WITHDRAWAL FOR HISTORIC PRESERVATION (including Nomination to National Register of Historic Places)
-  AREA RECOMMENDED FOR WITHDRAWAL FOR RECREATION/ADMINISTRATIVE PURPOSES.



prepared by T.O'Sullivan  
 Joint State/Federal Trail office  
 11/23/82