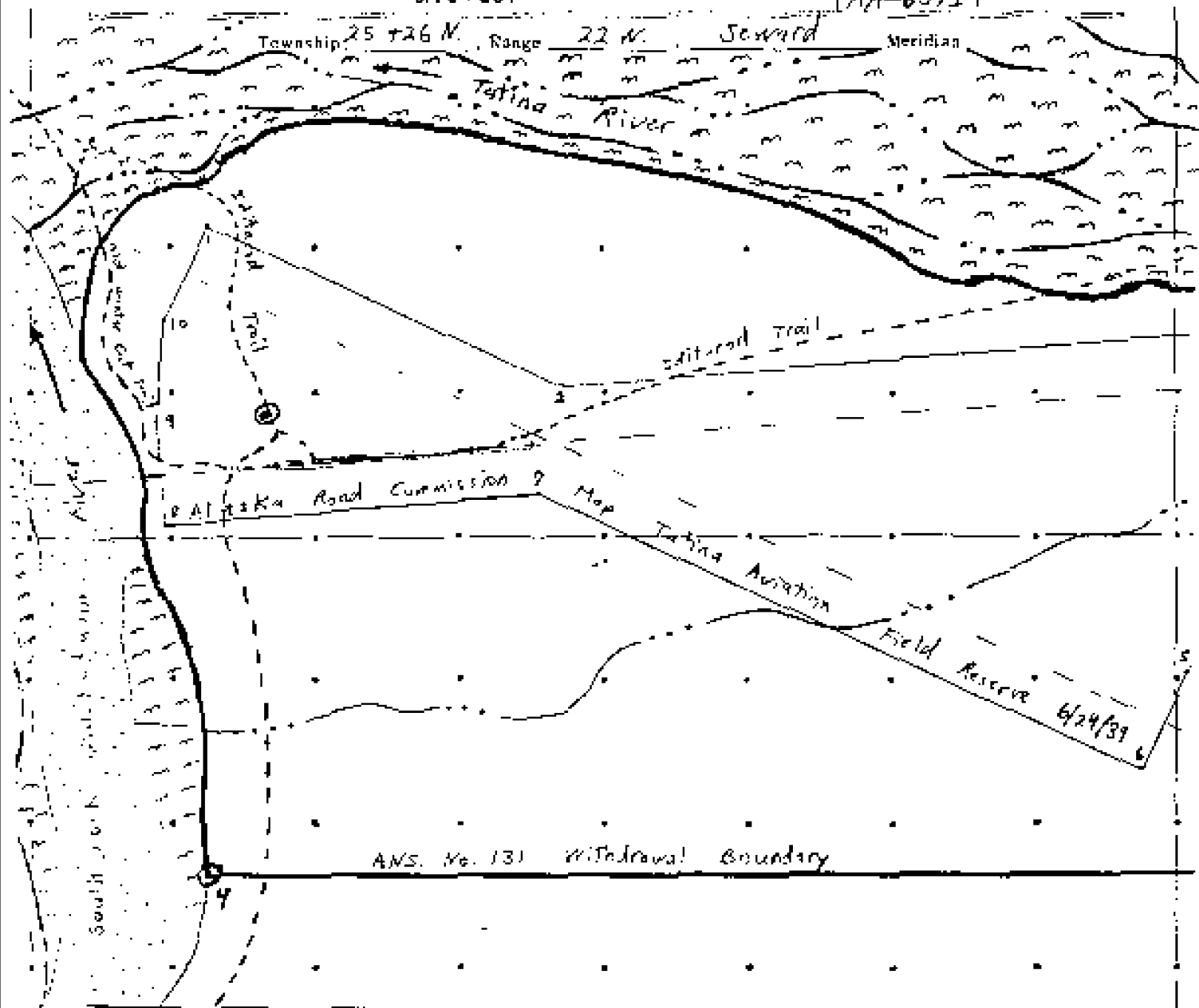


UNITED STATES
DEPARTMENT OF THE INTERIOR
BUREAU OF LAND MANAGEMENT

Tatina River A.V. No. 131
Raha River Cabin

Serial Number
AA-63714

SITE PLOT



LAND OWNERSHIP KEY AND ADDITIONAL TOPOGRAPHIC SYMBOLS

section lines

ANS No. 131

ARC site plan boundary 6/29/39

loading strip

winter trails

tree line

○* Corners of ANS 131 with a drawing as published

● Camp (⊙) Water

Gravel and sand bars and unvegetated flood plain

Scale 1" = 10 chains

OTHER DATA
McGrath B-1 (1938)
showing existing
River banks and
currently used winter
trails near the Raha
River Cabin and the
Air strip

UNITED STATES
DEPARTMENT OF THE INTERIOR
BUREAU OF LAND MANAGEMENT

Tatina River ANS No. 131

Fish River Cabin

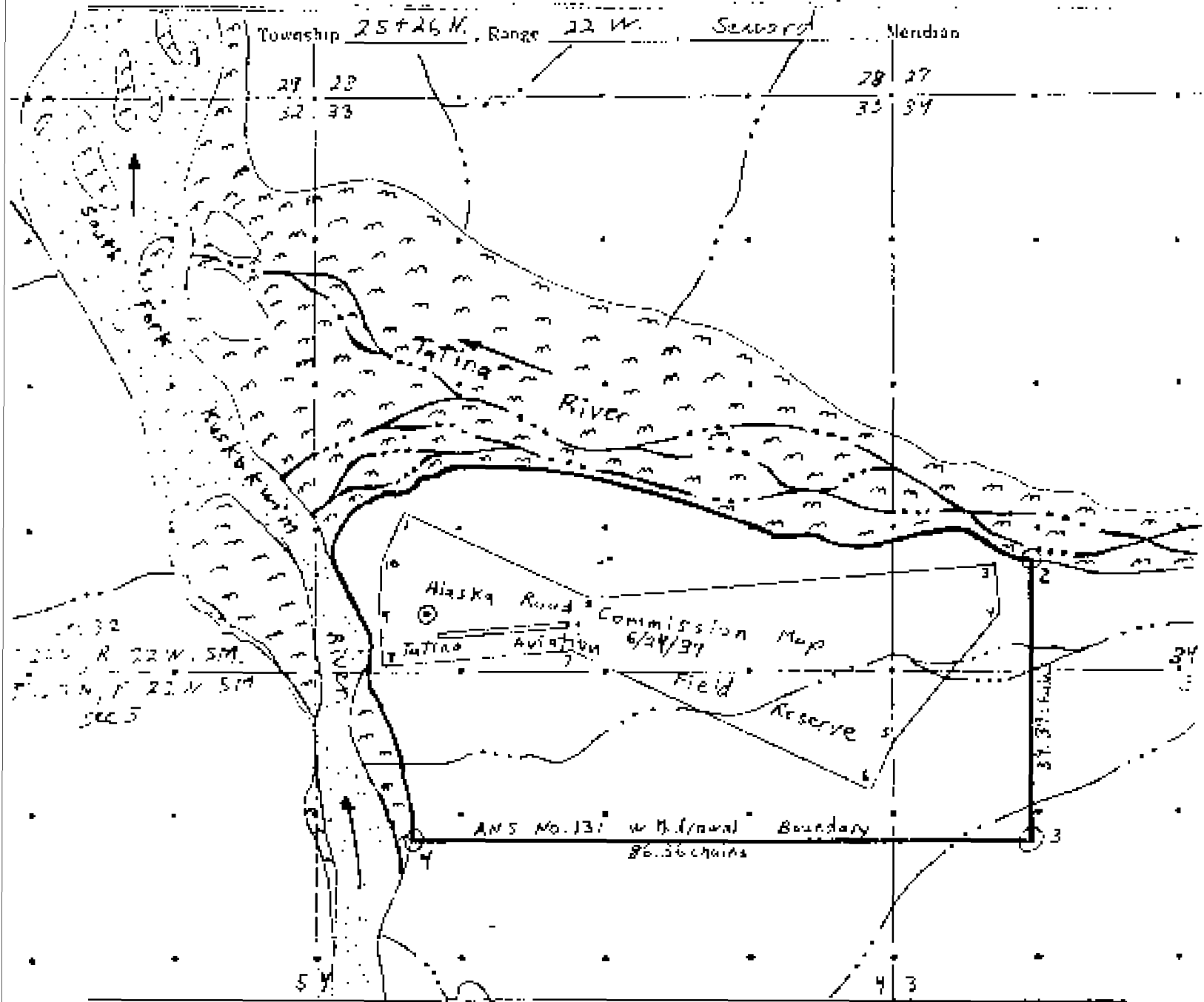
Serial Number
AA-63714

SITE PLOT

Township 25+26 N., Range 22 W. Seward Meridian

29 28
32 33

28 27
33 34



LAND OWNERSHIP KEY AND ADDITIONAL TOPOGRAPHIC SYMBOLS

Scale: 1" = 20 chains

section lines

○# corners of ANS 131 withdrawn as published

ANS NO. 131

⊙ Cabin ⊙ Water

ARC site plan boundary 6/24/37

— Gravel and sand bars and
— m vegetated flood plain

— landing strip

OTHER DATA
McGroth B-1
showing existing (1988)
River Banks
Northern and Western
portions eroded
by rivers