

Susitna-Watana Hydroelectric Project
(FERC No. 14241)

Groundwater Study
Study Plan Section 7.5

**Upwelling Broad-Scale Mapping of the Middle Susitna
River Technical Memorandum**

Appendix A:
**Locations of Potential Groundwater Influenced Areas
within the Middle Susitna River**

Prepared for

Alaska Energy Authority



SUSITNA-WATANA HYDRO

Clean, reliable energy for the next 100 years.

Prepared by

R2 Resource Consultants, Inc.

September 2016

LIST OF FIGURES

Figure A-1. Map index for locations of potential groundwater influenced areas within the Middle River Segment of the Susitna River.	1
Figure A-2. Locations of potential groundwater influenced areas between PRM 187.4 and PRM 185.0 within the Middle River Segment of the Susitna River.	2
Figure A-3. Locations of potential groundwater influenced areas between PRM 185.7 and PRM 183.2 within the Middle River Segment of the Susitna River.	3
Figure A-4. Locations of potential groundwater influenced areas between PRM 183.3 and PRM 180.6 within the Middle River Segment of the Susitna River.	4
Figure A-5. Locations of potential groundwater influenced areas between PRM 180.8 and PRM 178.3 within the Middle River Segment of the Susitna River.	5
Figure A-6. Locations of potential groundwater influenced areas between PRM 178.9 and PRM 175.8 within the Middle River Segment of the Susitna River.	6
Figure A-7. Locations of potential groundwater influenced areas between PRM 175.9 and PRM 173.6 within the Middle River Segment of the Susitna River.	7
Figure A-8. Locations of potential groundwater influenced areas between PRM 173.6 and PRM 171.3 within the Middle River Segment of the Susitna River.	8
Figure A-9. Locations of potential groundwater influenced areas between PRM 171.5 and PRM 168.8 within the Middle River Segment of the Susitna River.	9
Figure A-10. Locations of potential groundwater influenced areas between PRM 169.7 and PRM 165.6 within the Middle River Segment of the Susitna River.	10
Figure A-11. Locations of potential groundwater influenced areas between PRM 166.2 and PRM 162.0 within the Middle River Segment of the Susitna River.	11
Figure A-12. Locations of potential groundwater influenced areas between PRM 162.0 and PRM 158.0 within the Middle River Segment of the Susitna River.	12
Figure A-13. Locations of potential groundwater influenced areas between PRM 158.0 and PRM 153.9 within the Middle River Segment of the Susitna River.	13
Figure A-14. Locations of potential groundwater influenced areas between PRM 154.4 and PRM 151.8 within the Middle River Segment of the Susitna River.	14
Figure A-15. Locations of potential groundwater influenced areas between PRM 152.6 and PRM 150.1 within the Middle River Segment of the Susitna River.	15

Figure A-16. Locations of potential groundwater influenced areas between PRM 150.1 and PRM 147.7 within the Middle River Segment of the Susitna River.	16
Figure A-17. Locations of potential groundwater influenced areas between PRM 148.0 and PRM 145.6 within the Middle River Segment of the Susitna River.	17
Figure A-18. Locations of potential groundwater influenced areas between PRM 145.9 and PRM 143.5 within the Middle River Segment of the Susitna River.	18
Figure A-19. Locations of potential groundwater influenced areas between PRM 143.6 and PRM 141.2 within the Middle River Segment of the Susitna River.	19
Figure A-20. Locations of potential groundwater influenced areas between PRM 141.4 and PRM 138.5 within the Middle River Segment of the Susitna River.	20
Figure A-21. Locations of potential groundwater influenced areas between PRM 138.7 and PRM 136.3 within the Middle River Segment of the Susitna River.	21
Figure A-22. Locations of potential groundwater influenced areas between PRM 136.6 and PRM 134.1 within the Middle River Segment of the Susitna River.	22
Figure A-23. Locations of potential groundwater influenced areas between PRM 134.1 and PRM 131.6 within the Middle River Segment of the Susitna River.	23
Figure A-24. Locations of potential groundwater influenced areas between PRM 131.6 and PRM 129.2 within the Middle River Segment of the Susitna River.	24
Figure A-25. Locations of potential groundwater influenced areas between PRM 129.8 and PRM 127.4 within the Middle River Segment of the Susitna River.	25
Figure A-26. Locations of potential groundwater influenced areas between PRM 127.4 and PRM 125.0 within the Middle River Segment of the Susitna River.	26
Figure A-27. Locations of potential groundwater influenced areas between PRM 125.0 and PRM 122.5 within the Middle River Segment of the Susitna River.	27
Figure A-28. Locations of potential groundwater influenced areas between PRM 122.5 and PRM 120.1 within the Middle River Segment of the Susitna River.	28
Figure A-29. Locations of potential groundwater influenced areas between PRM 120.1 and PRM 117.7 within the Middle River Segment of the Susitna River.	29
Figure A-30. Locations of potential groundwater influenced areas between PRM 117.6 and PRM 115.3 within the Middle River Segment of the Susitna River.	30
Figure A-31. Locations of potential groundwater influenced areas between PRM 115.5 and PRM 112.9 within the Middle River Segment of the Susitna River.	31

Figure A-32. Locations of potential groundwater influenced areas between PRM 112.9 and PRM 110.5 within the Middle River Segment of the Susitna River.	32
Figure A-33. Locations of potential groundwater influenced areas between PRM 110.4 and PRM 108.0 within the Middle River Segment of the Susitna River.	33
Figure A-34. Locations of potential groundwater influenced areas between PRM 108.1 and PRM 105.4 within the Middle River Segment of the Susitna River.	34
Figure A-35. Locations of potential groundwater influenced areas between PRM 106.2 and PRM 103.7 within the Middle River Segment of the Susitna River.	35
Figure A-36. Locations of potential groundwater influenced areas between PRM 105.0 and PRM 102.3 within the Middle River Segment of the Susitna River/	36

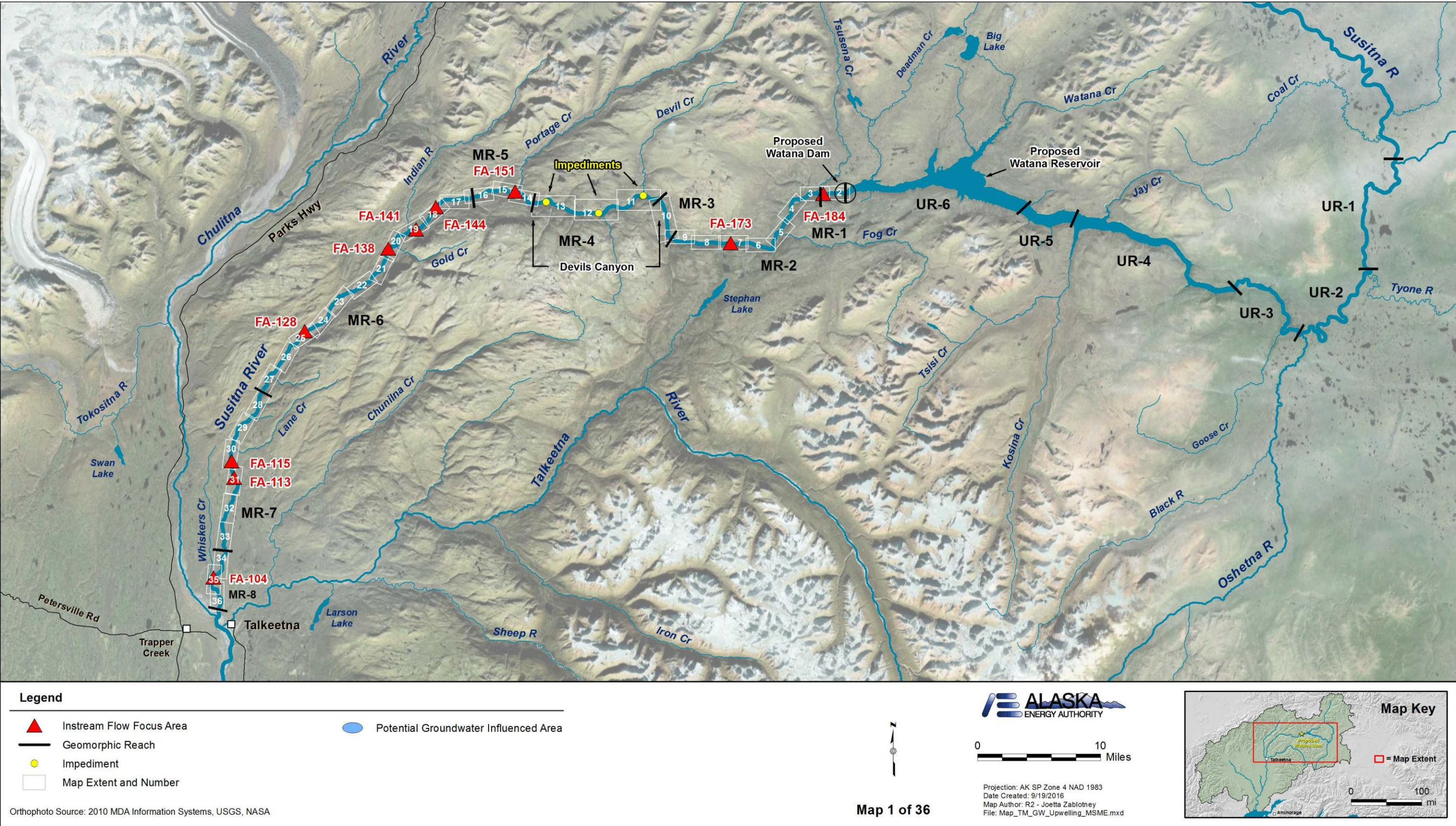


Figure A-1. Map index for locations of potential groundwater influenced areas within the Middle River Segment of the Susitna River.



Figure A-2. Locations of potential groundwater influenced areas between PRM 187.4 and PRM 185.0 within the Middle River Segment of the Susitna River.



Figure A-3. Locations of potential groundwater influenced areas between PRM 185.7 and PRM 183.2 within the Middle River Segment of the Susitna River.



Figure A-4. Locations of potential groundwater influenced areas between PRM 183.3 and PRM 180.6 within the Middle River Segment of the Susitna River.



Figure A-5. Locations of potential groundwater influenced areas between PRM 180.8 and PRM 178.3 within the Middle River Segment of the Susitna River.



Figure A-6. Locations of potential groundwater influenced areas between PRM 178.9 and PRM 175.8 within the Middle River Segment of the Susitna River.



Figure A-7. Locations of potential groundwater influenced areas between PRM 175.9 and PRM 173.6 within the Middle River Segment of the Susitna River.



Figure A-8. Locations of potential groundwater influenced areas between PRM 173.6 and PRM 171.3 within the Middle River Segment of the Susitna River.



Figure A-9. Locations of potential groundwater influenced areas between PRM 171.5 and PRM 168.8 within the Middle River Segment of the Susitna River.



Figure A-10. Locations of potential groundwater influenced areas between PRM 169.7 and PRM 165.6 within the Middle River Segment of the Susitna River.



Figure A-11. Locations of potential groundwater influenced areas between PRM 166.2 and PRM 162.0 within the Middle River Segment of the Susitna River.



Figure A-12. Locations of potential groundwater influenced areas between PRM 162.0 and PRM 158.0 within the Middle River Segment of the Susitna River.



Figure A-13. Locations of potential groundwater influenced areas between PRM 158.0 and PRM 153.9 within the Middle River Segment of the Susitna River.



Figure A-14. Locations of potential groundwater influenced areas between PRM 154.4 and PRM 151.8 within the Middle River Segment of the Susitna River.



Figure A-15. Locations of potential groundwater influenced areas between PRM 152.6 and PRM 150.1 within the Middle River Segment of the Susitna River.

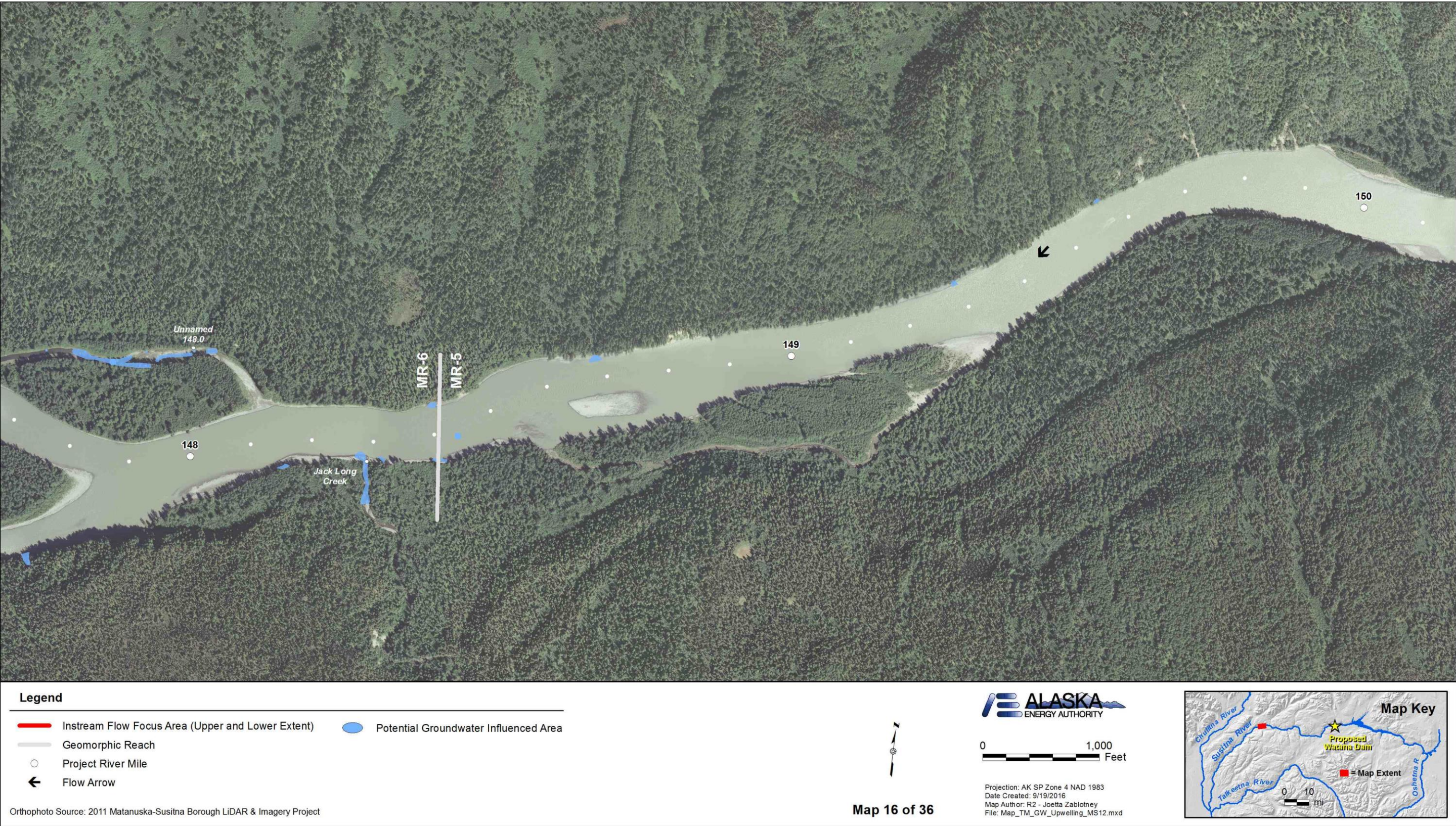


Figure A-16. Locations of potential groundwater influenced areas between PRM 150.1 and PRM 147.7 within the Middle River Segment of the Susitna River.