

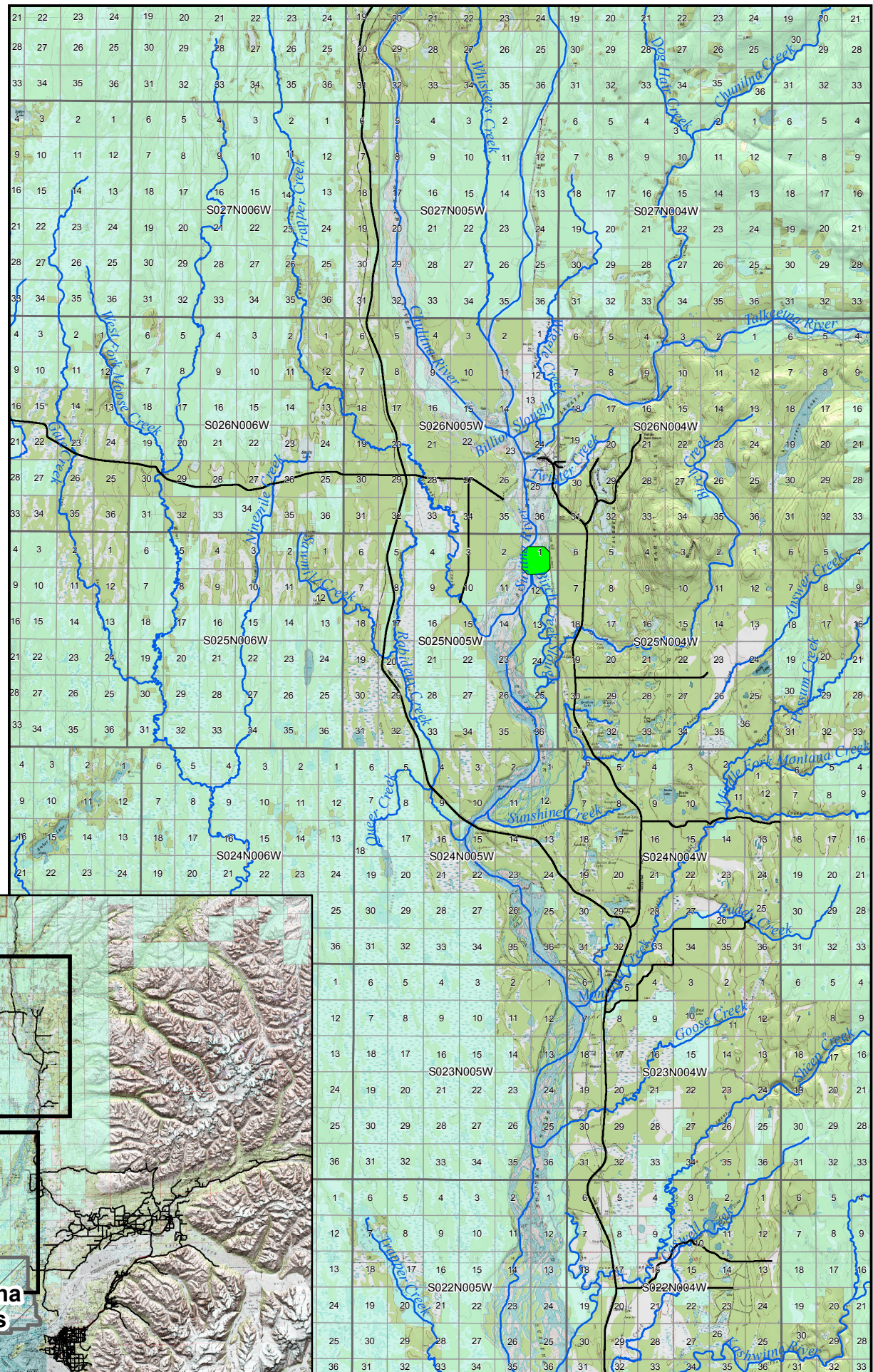
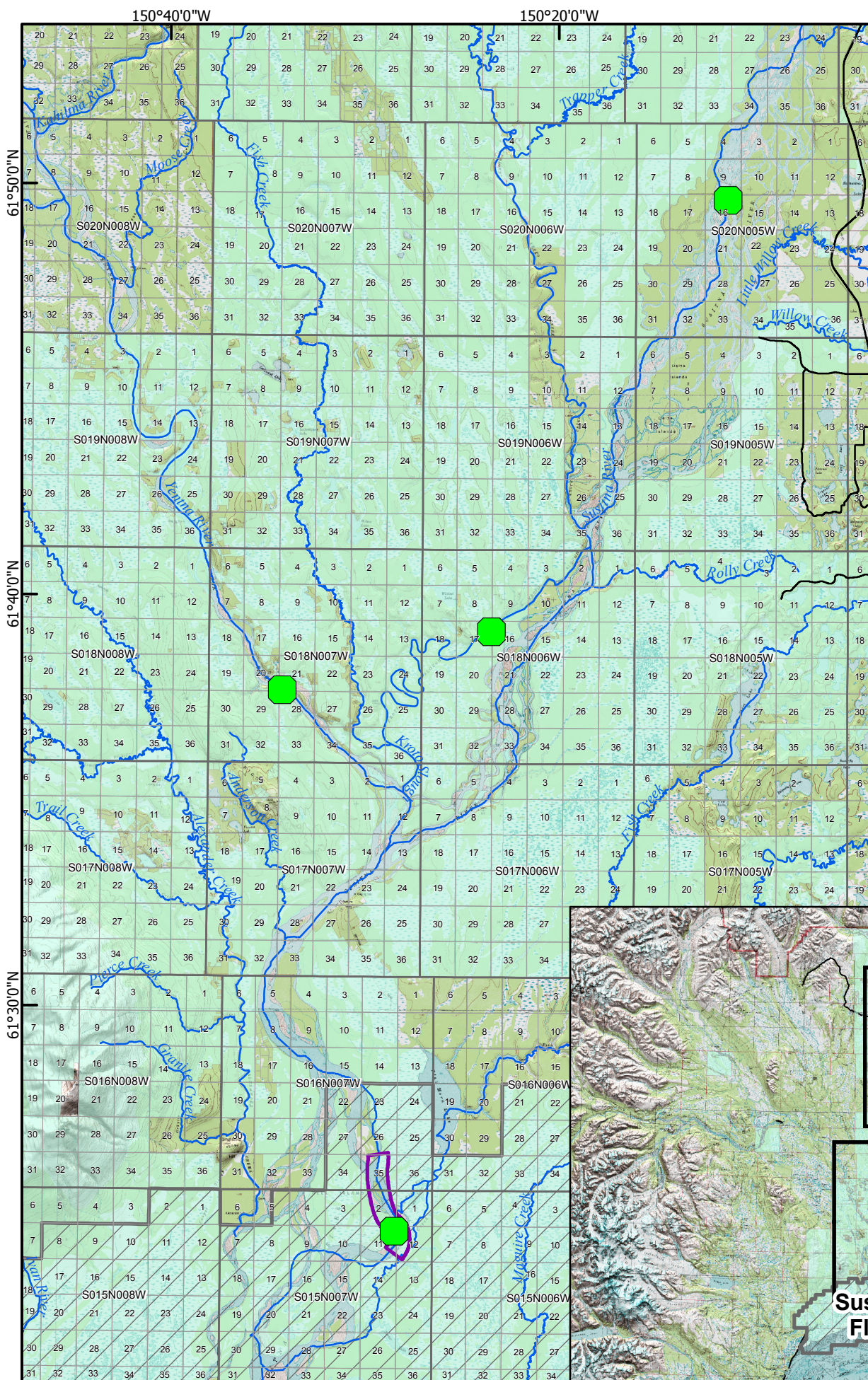
Susitna-Watana Hydroelectric Project Document

ARLIS Uniform Cover Page

Title: ADNR-MLW land use permit application, Susitna-Watana Hydroelectric Project, eulachon studies, 2013 proposed studies		SuWa 202
Author(s) – Personal: Justin Crowther		
Author(s) – Corporate:		
AEA-identified category, if specified:		
AEA-identified series, if specified:		
Series (ARLIS-assigned report number): Susitna-Watana Hydroelectric Project document number 202		Existing numbers on document:
Published by: [Anchorage, Alaska : Alaska Energy Authority, 2013]		Date published: April 23, 2013
Published for:		Date or date range of report: 2013
Volume and/or Part numbers:		Final or Draft status, as indicated:
Document type: Map		Pagination: 1 sheet
Related work(s):		Pages added/changed by ARLIS:
Notes:		

All reports in the Susitna-Watana Hydroelectric Project Document series include an ARLIS-produced cover page and an ARLIS-assigned number for uniformity and citability. All reports are posted online at <http://www.arlis.org/resources/susitna-watana/>





* 2013 proposal studies are approximate locations.






ADNR-MLW

Land Use Permit Application

**Susitna-Watana
Hydroelectric Project**

EULACHON STUDIES

2013 Proposed Studies*

-  Eulachon Telemetry Site
-  Sonar Site
-  Susitna Flats State Game Refuge
-  State Land

0 1 2 3 4 5 Miles

Projection: NAD_1983_StatePlane_Alaska
Date Updated: 4/23/2013
Created By: AEA - Justin Crowther
File: 2013 DNR_EUL_ICE

