

1
0
0
2
5
7
7

HARZA-EBASCO

Susitna Joint Venture
Document Number

2577

Please Return To
DOCUMENT CONTROL

**SUSITNA TRANSMISSION SYSTEM
STATUS SUMMARY**

**VOLUME THREE
RESOURCE MAPS**

DRAFT

DECEMBER 1983

HARZA-EBASCO
SUSITNA JOINT VENTURE

ALASKA POWER AUTHORITY

SUSITNA TRANSMISSION SYSTEM
STATUS SUMMARY

VOLUME THREE
RESOURCE MAPS

DRAFT
DECEMBER 1983

HARZA-EBASCO
SUSITNA JOINT VENTURE

VOLUME 3
RESOURCE MAPS
TABLE OF CONTENTS

<u>DESCRIPTION</u>	<u>MAP/ DRAWING NO.</u>
South Study Area - Existing Features	1
- Topography	
- Places and Names	
- Linear Features	
- Route Segments	
South Study Area - Vegetation Resources	2
- Topography	
- Route Segments	
South Study Area - Visual Resources	3
- Topography	
- Route Segments	
South Study Area - Fish and Wildlife Resources	4
- Topography	
- Route Segments	
South Study Area/Willow Subarea - Existing Features	5
- Topography	
- Places and Names	
- Linear Features	
- Route Segments	

VOLUME 3
RESOURCE MAPS
TABLE OF CONTENTS

<u>DESCRIPTION</u>	<u>MAP/ DRAWING NO.</u>
South Study Area/Willow Subarea - Land Ownership	6
- Topography	
- Route Segments	
South Study Area/Willow Subarea - Land Use	7
- Topography	
- Route Segments	
South Study Area/Anchorage Subarea - Existing Features	8
- Topography	
- Places and Names	
- Linear Features	
- Route Segments	
South Study Area/Anchorage Subarea - Land Ownership	9
- Topography	
- Route Segments	
South Study Area/Anchorage Subarea - Land Use	10
- Topography	
- Route Segments	

VOLUME 3
RESOURCE MAPS
TABLE OF CONTENTS

<u>DESCRIPTION</u>	<u>MAP/ DRAWING NO.</u>
South Study Area/Palmer Subarea - Existing Features	11
- Topography	
- Places and Names	
- Linear Features	
- Route Segments	
South Study Area/Palmer Subarea - Land Ownership	12
- Topography	
- Route Segments	
South Study Area/Palmer Subarea - Land Use	13
- Topography	
- Route Segments	
North Study Area/Healy Subarea - Existing Features	14
- Topography	
- Places and Names	
- Linear Features	
- Route Segments	
North Study Area/Healy Subarea - Land Ownership	15
- Topography	
- Route Segments	

VOLUME 3
RESOURCE MAPS
TABLE OF CONTENTS

<u>DESCRIPTION</u>	<u>MAP/ DRAWING NO.</u>
North Study Area/Healy Subarea - Land Use	16
- Topography	
- Route Segments	
North Study Area/Healy Subarea - Vegetation Resources	17
- Topography	
- Route Segments	
North Study Area/Healy Subarea - Visual Resources	18
- Topography	
- Route Segments	
North Study Area/Healy Subarea - Fish and Wildlife Resources	19
- Topography	
- Route Segments	
North Study Area/Fairbanks Subarea - Existing Features	20
- Topography	
- Places and Names	
- Linear Features	
- Route Segments	

VOLUME 3
RESOURCE MAPS
TABLE OF CONTENTS

<u>DESCRIPTION</u>	<u>MAP/ DRAWING NO.</u>
North Study Area/Fairbanks Subarea - Land Ownership - Topography - Route Segments	21
North Study Area/Fairbanks Subarea - Land Use - Topography - Route Segments	22
North Study Area/Fairbanks Subarea - Vegetation Resources - Topography - Route Segments	23
North Study Area/Fairbanks Subarea - Visual Resources - Topography - Route Segments	24
North Study Area/Fairbanks Subarea - Fish and Wildlife Resources - Topography - Route Segments	25

VOLUME 1 of 3

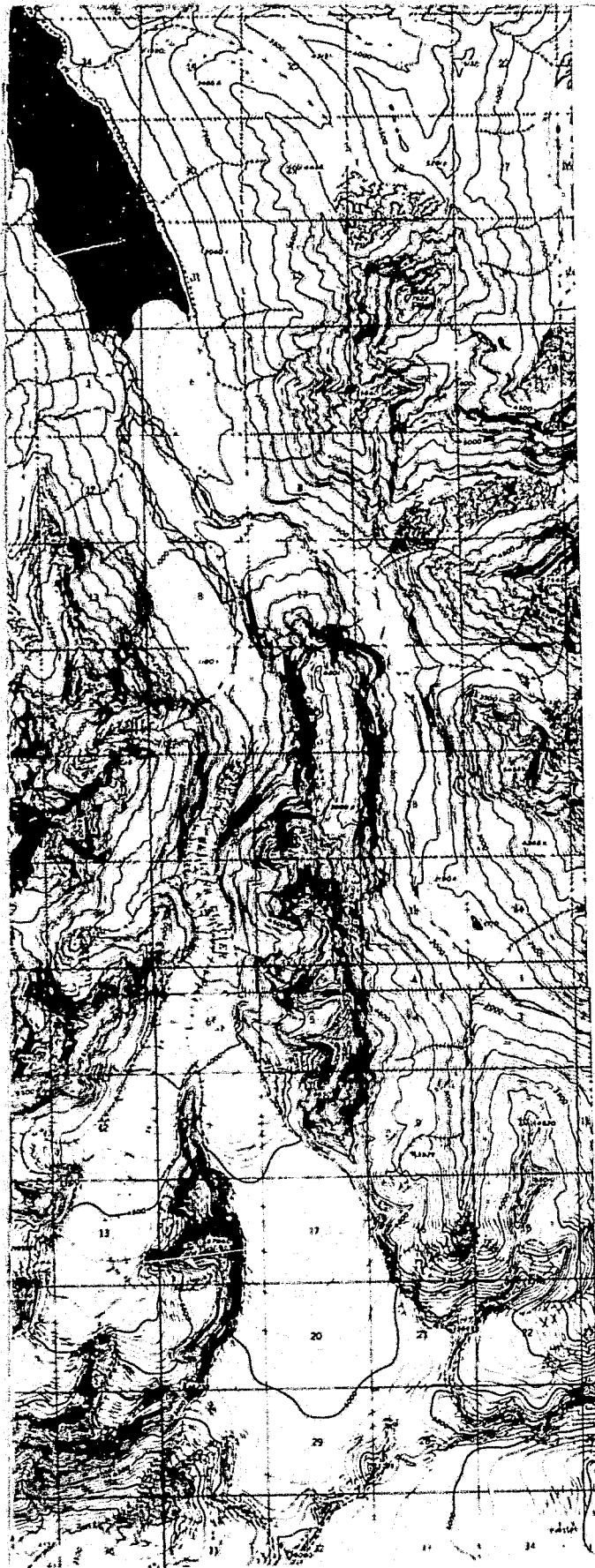
TECHNICAL, ECONOMIC AND ENVIRONMENTAL CONSIDERATIONS

1. Introduction
 2. Engineering Considerations
 3. Study Approach
 4. Alternative Route Descriptions
 5. Technical Considerations
 6. Economic Considerations
 7. Environmental Considerations
 8. Summary and Recommendations
- Appendix M - Agency Comments
- Appendix N - Utility Comments
- Appendix P - Public Participation
- Appendix R - Environmental Resource Descriptions for Transmission
Route Alternatives
- Appendix S - Environmental Inventory Support Data

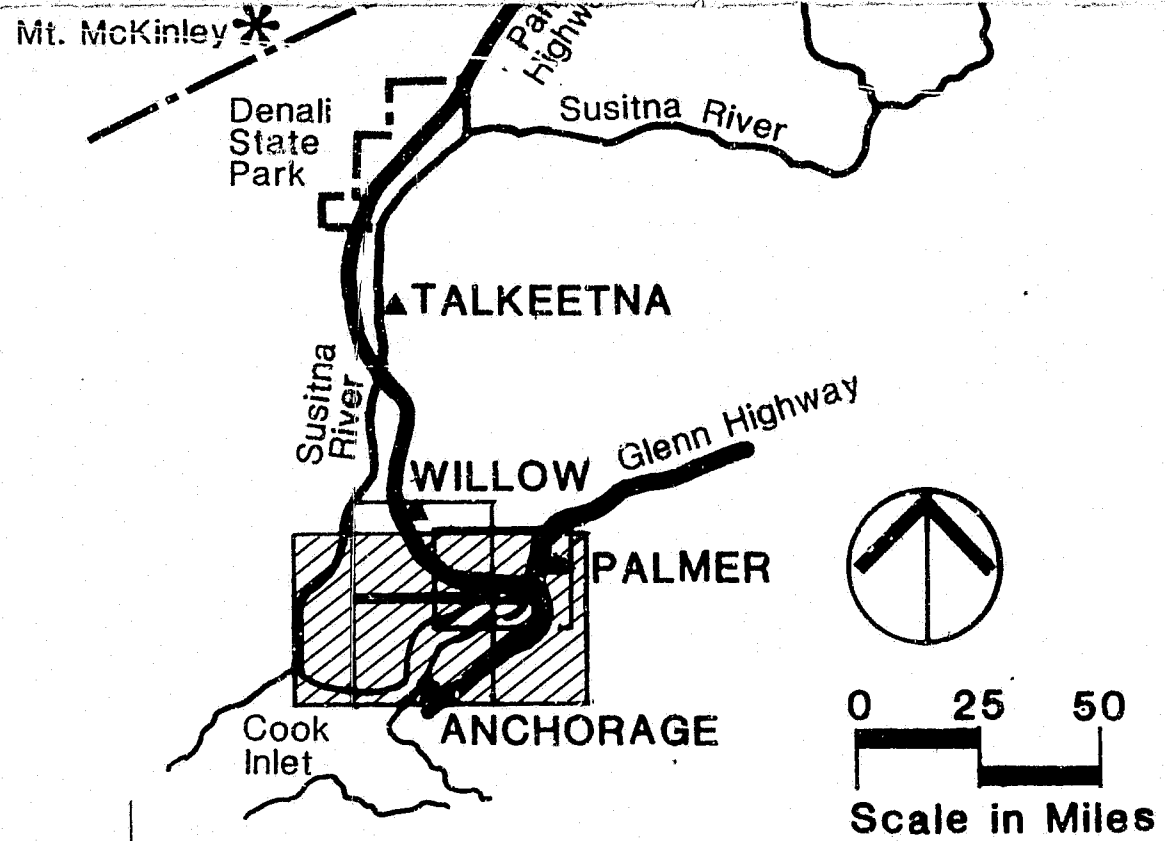
VOLUME 2 of 3

TECHNICAL AND ECONOMIC APPENDICES

- APPENDIX A - Review of Established Meteorological Design Parameters
- APPENDIX B - Review of Established Structure and Foundation Design
Parameters
- APPENDIX C - 230 kV Environmental Effects and Performance
- APPENDIX D - 345 kV Environmental Effects and Performance
- APPENDIX E - 230 kV and 345 kV Right-of-Way and Clearing Diagrams
- APPENDIX F - Cost Data for Potential Transmission System Refinements
- APPENDIX G - Land Field Services Report on Direct and Indirect Land
Acquisition Costs - 10/26/83
- APPENDIX H - Summary of Susitna Transmission System Costs for FERC
Application Scheme
- APPENDIX I - Power Sales Agreement - Letter of Intent
- Appendix J - Electric Power System Study Supplement



R 3 E



ALASKA POWER AUTHORITY

SUSITNA HYDROELECTRIC PROJECT

South Study Area

EXISTING FEATURES

HARZA-EBASCO

SUSITNA JOINT VENTURE

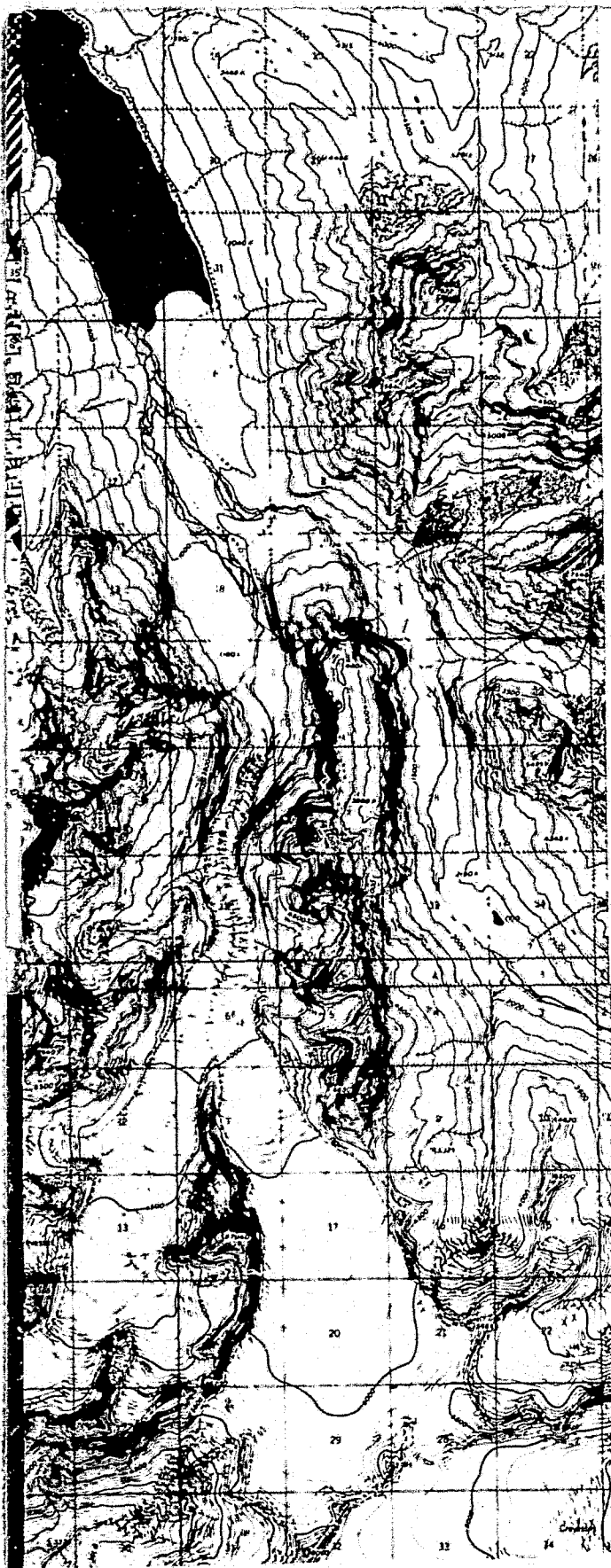
APPROVED

ANCHORAGE,
ALASKA

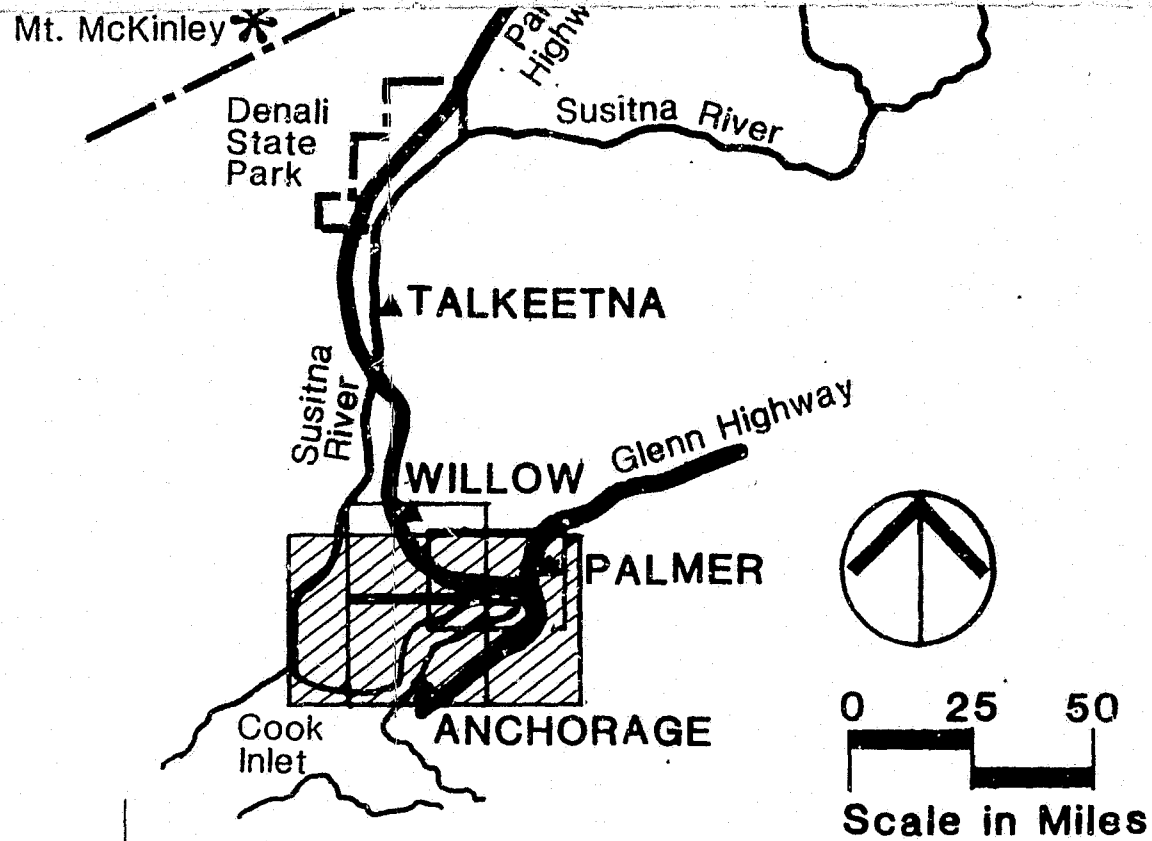
DATE

DRAWING NO.

1



R 3 E



ALASKA POWER AUTHORITY

SUSITNA HYDROELECTRIC PROJECT

South Study Area

**VEGETATION
RESOURCES**

HARZA-EBASCO

SUSITNA JOINT VENTURE

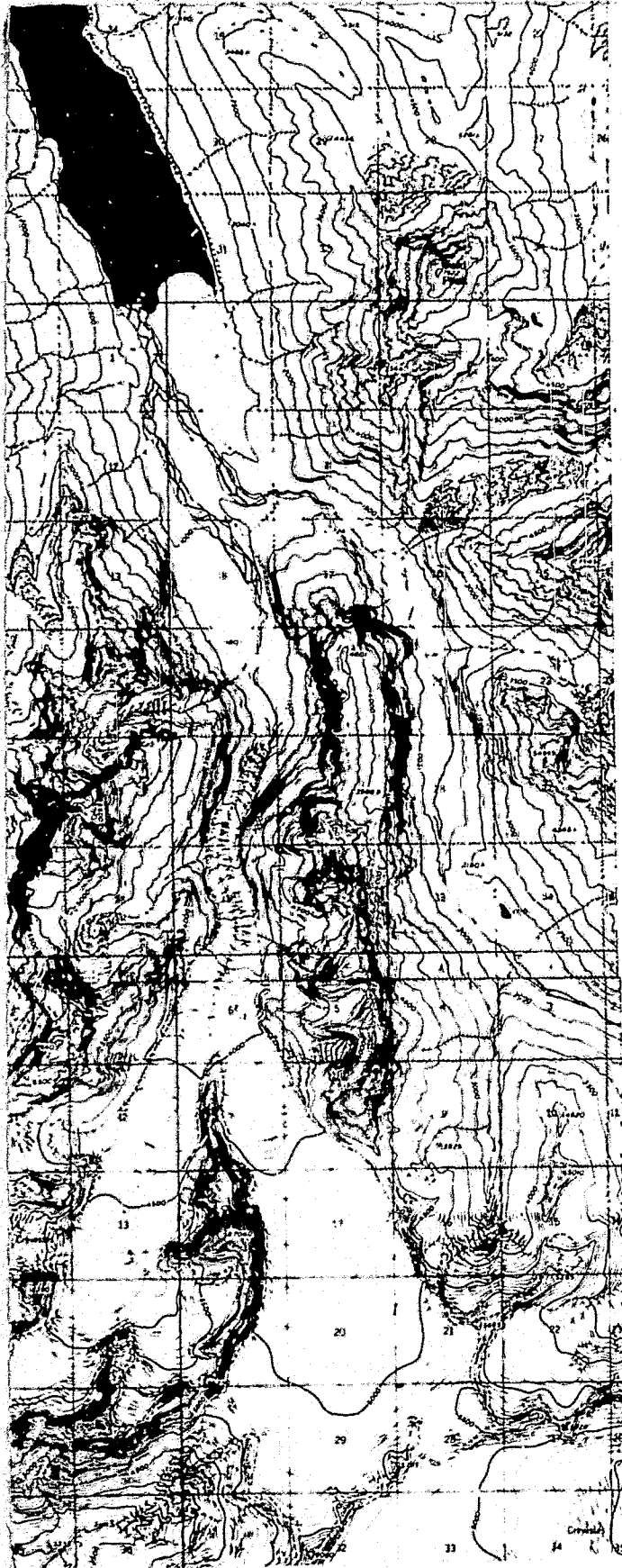
APPROVED

DATE

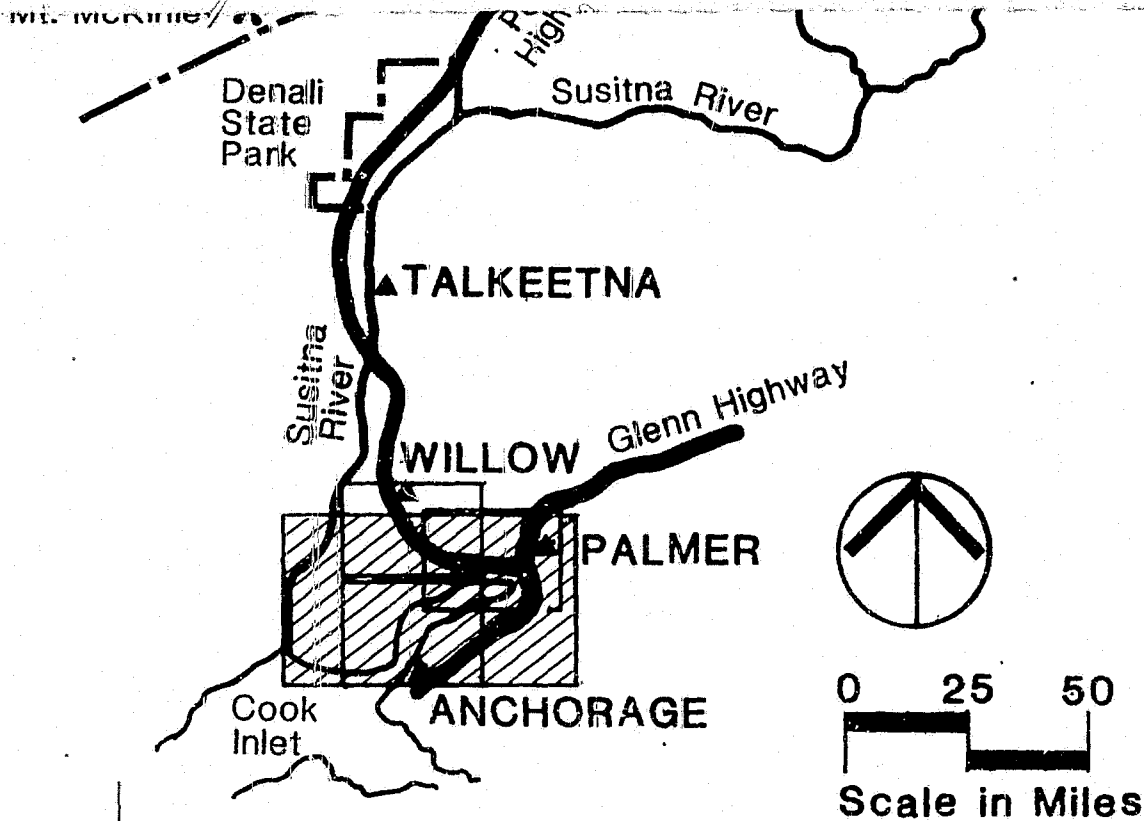
DRAWING NO.

ANCHORAGE,
ALASKA

2



R 3 E



ALASKA POWER AUTHORITY

SUSITNA HYDROELECTRIC PROJECT

South Study Area

VISUAL RESOURCES

HARZA-EBASCO

SUSITNA JOINT VENTURE

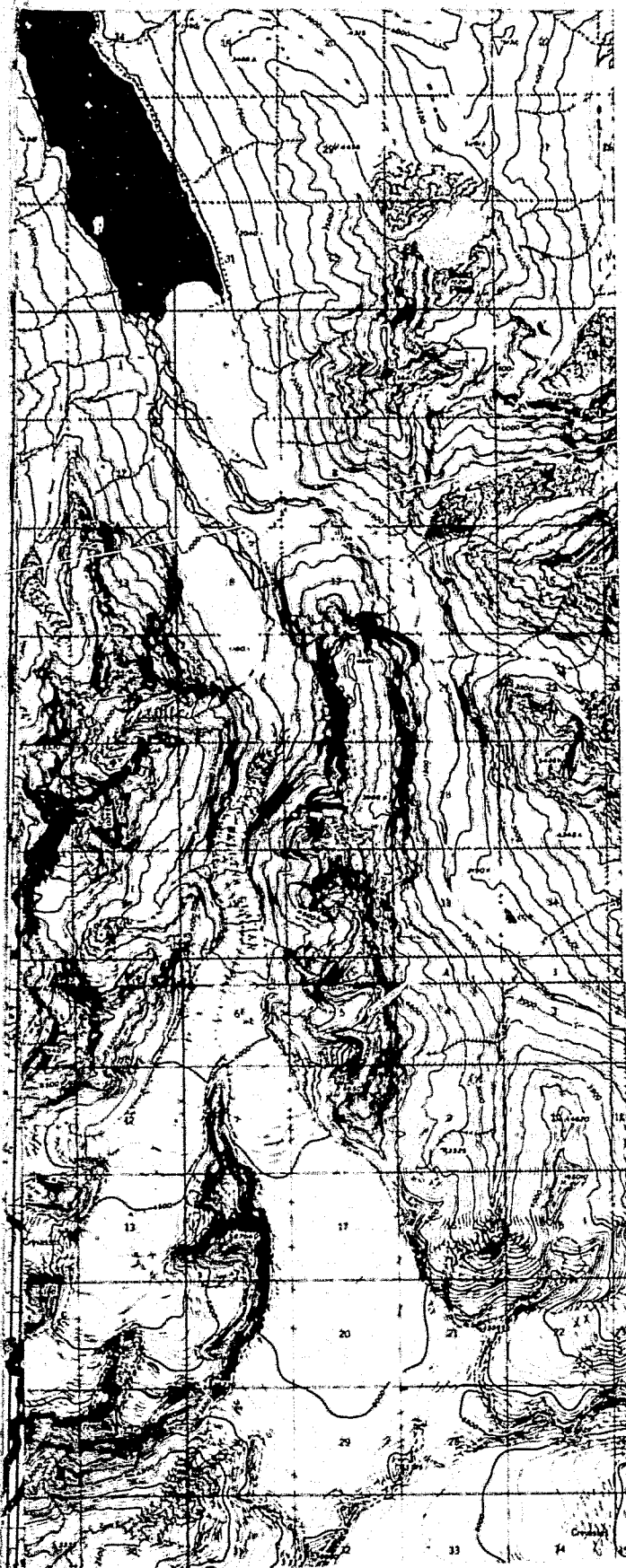
APPROVED

ANCHORAGE,
ALASKA

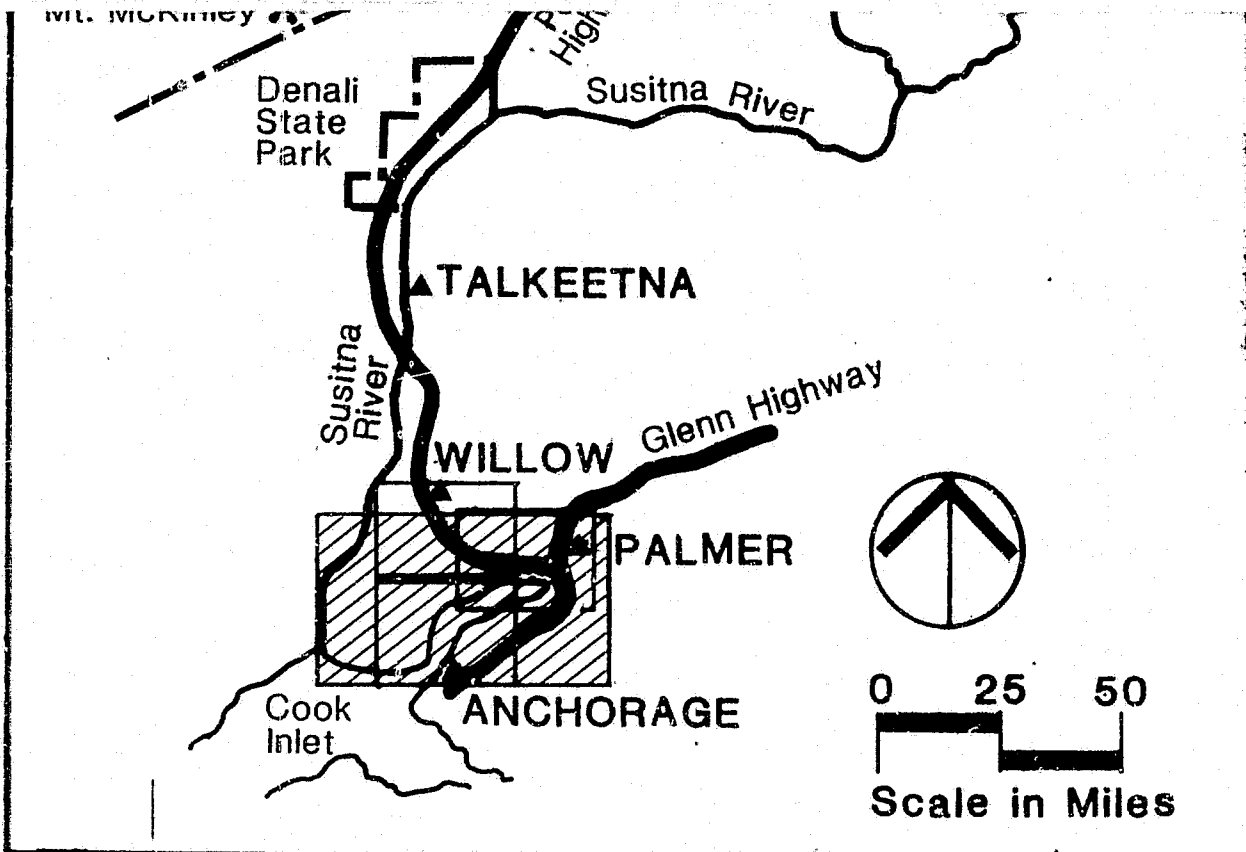
DATE

DRAWING NO.

3



R 3 E



ALASKA POWER AUTHORITY

SUSITNA HYDROELECTRIC PROJECT

South Study Area

FISH & WILDLIFE RESOURCES

HARZA-EBASCO

SUSITNA JOINT VENTURE

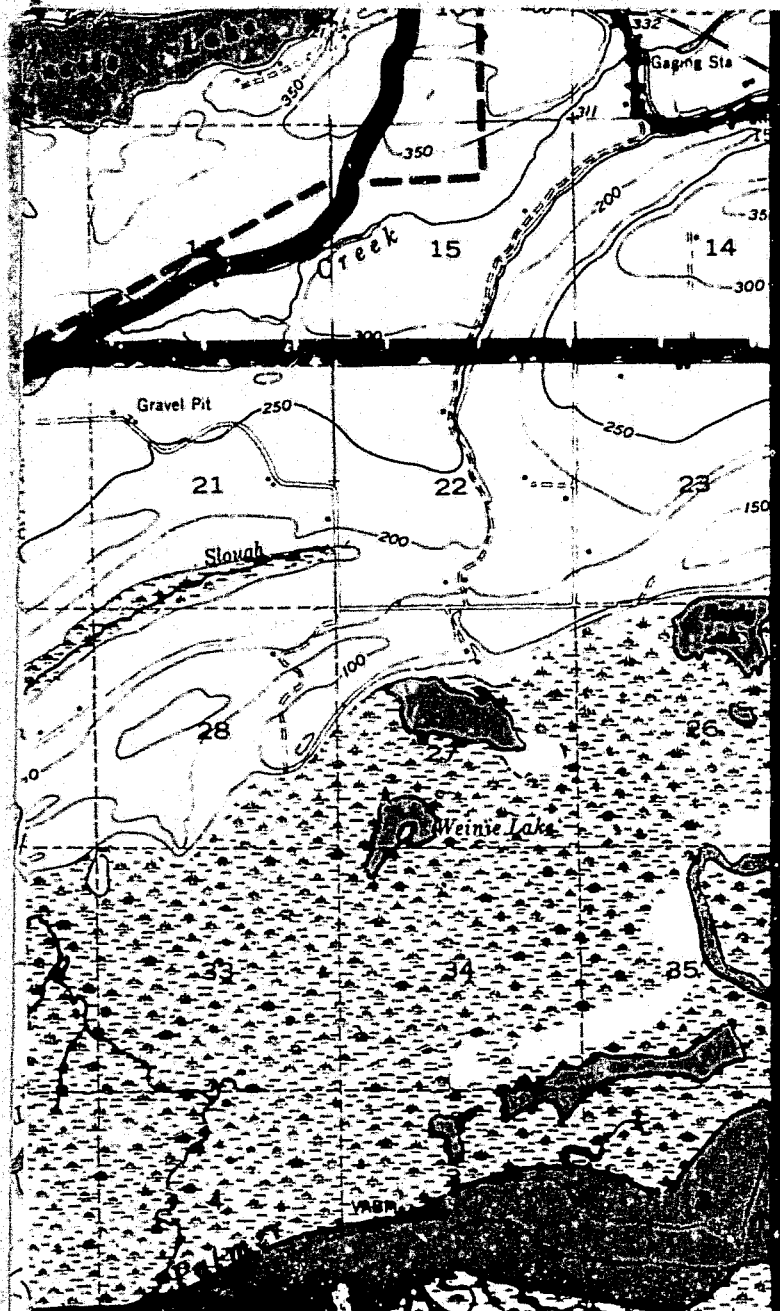
APPROVED

ANCHORAGE,
ALASKA

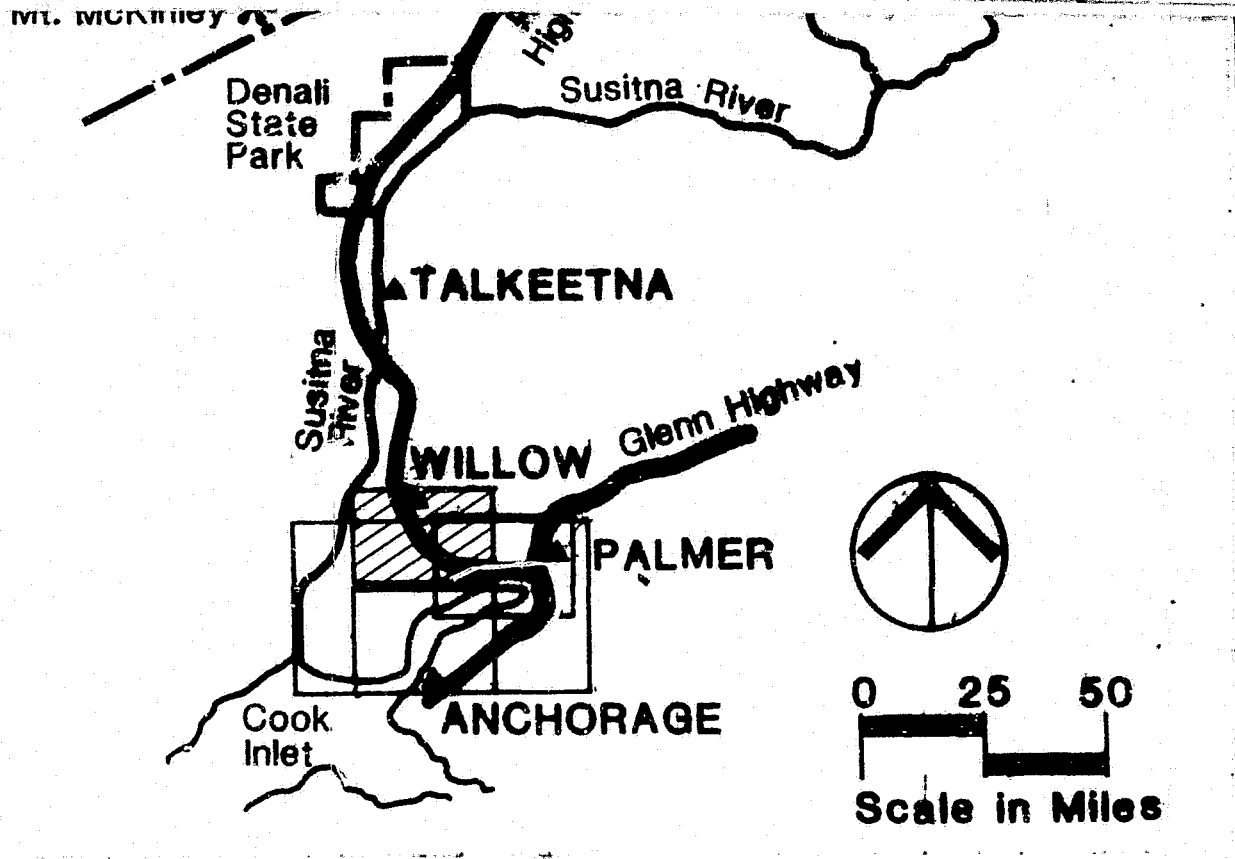
DATE

DRAWING NO.

4



RIW



ALASKA POWER AUTHORITY

SUSITNA HYDROELECTRIC PROJECT

South Study Area Willow Subarea

EXISTING FEATURES

HARZA-EBASCO

SUSITNA JOINT VENTURE

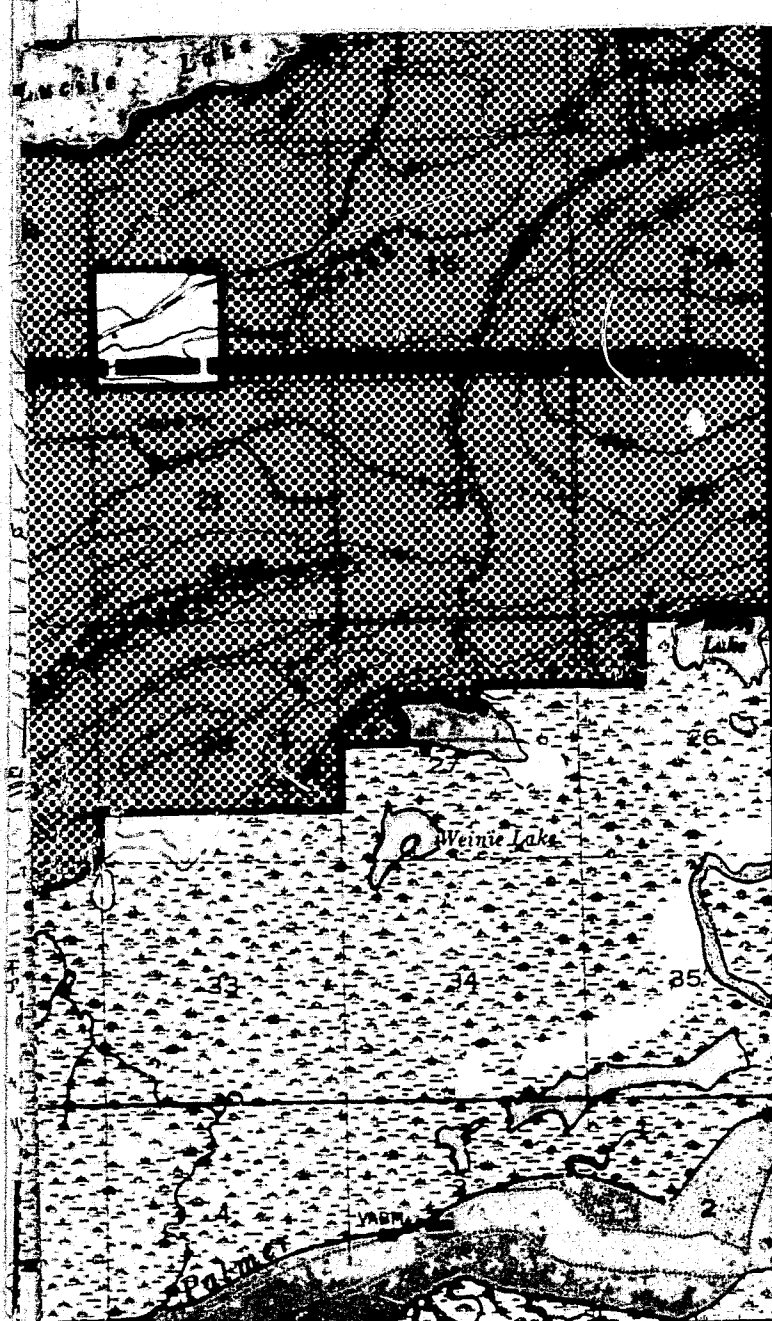
APPROVED

ANCHORAGE,
ALASKA

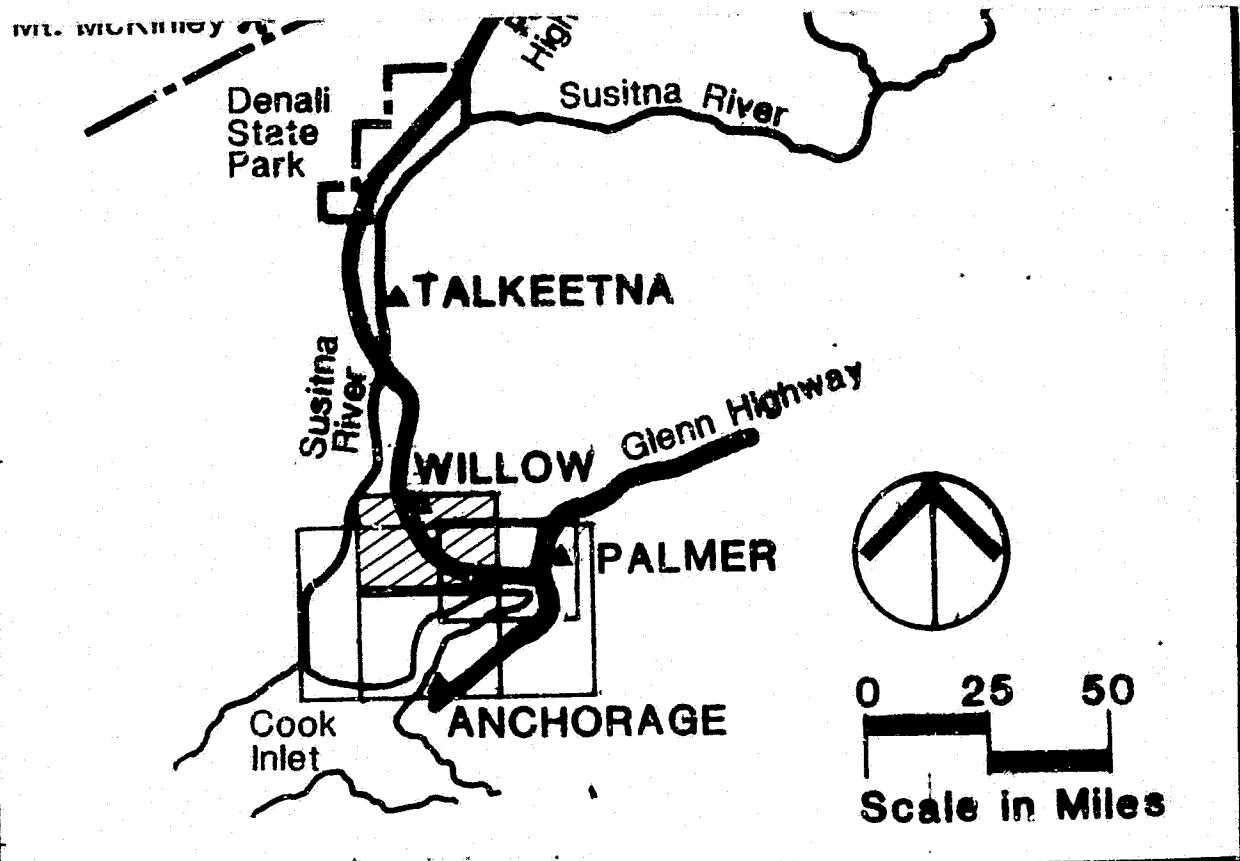
DATE

DRAWING NO.

5



R I W



ALASKA POWER AUTHORITY

SUSITNA HYDROELECTRIC PROJECT

South Study Area Willow Subarea

LAND OWNERSHIP

HARZA-EBASCO

SUSITNA JOINT VENTURE

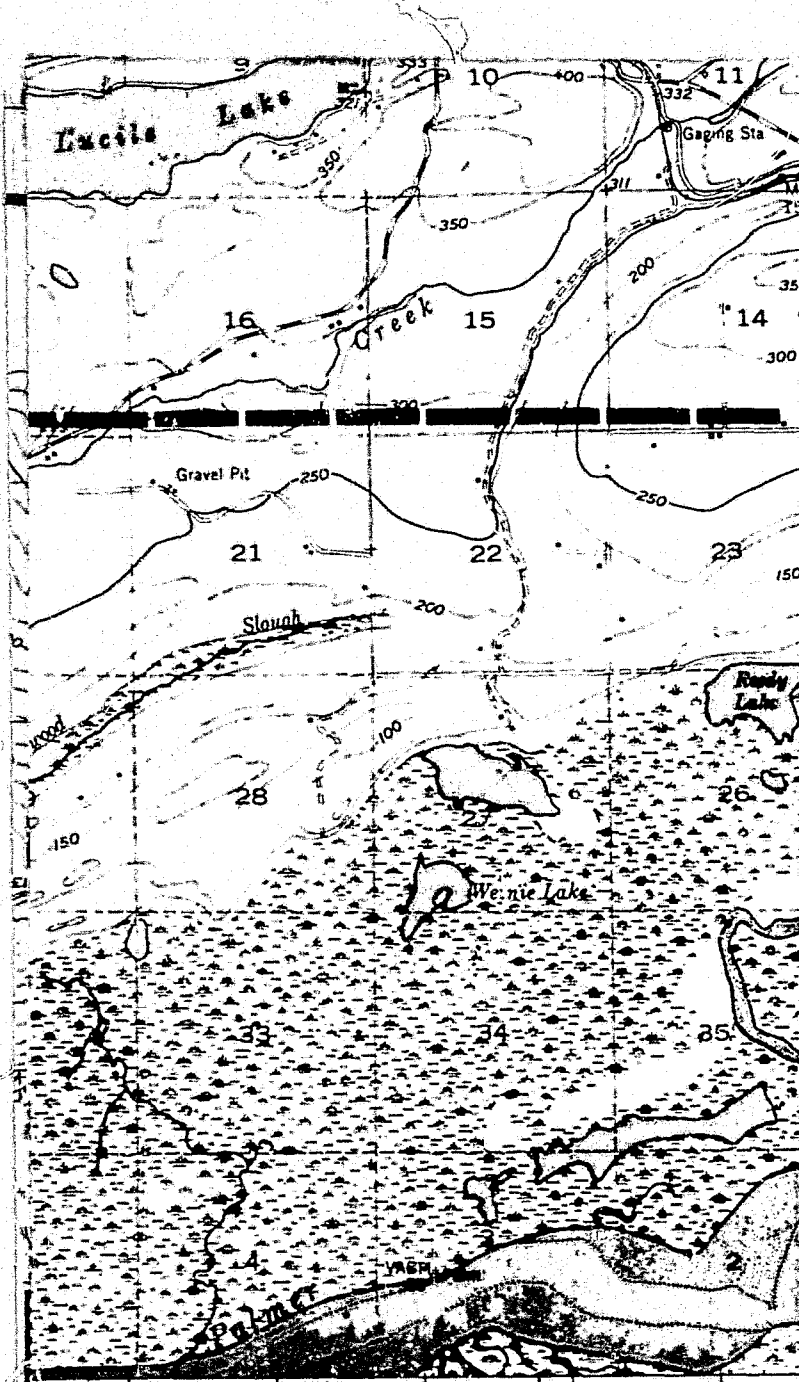
APPROVED

ANCHORAGE,
ALASKA

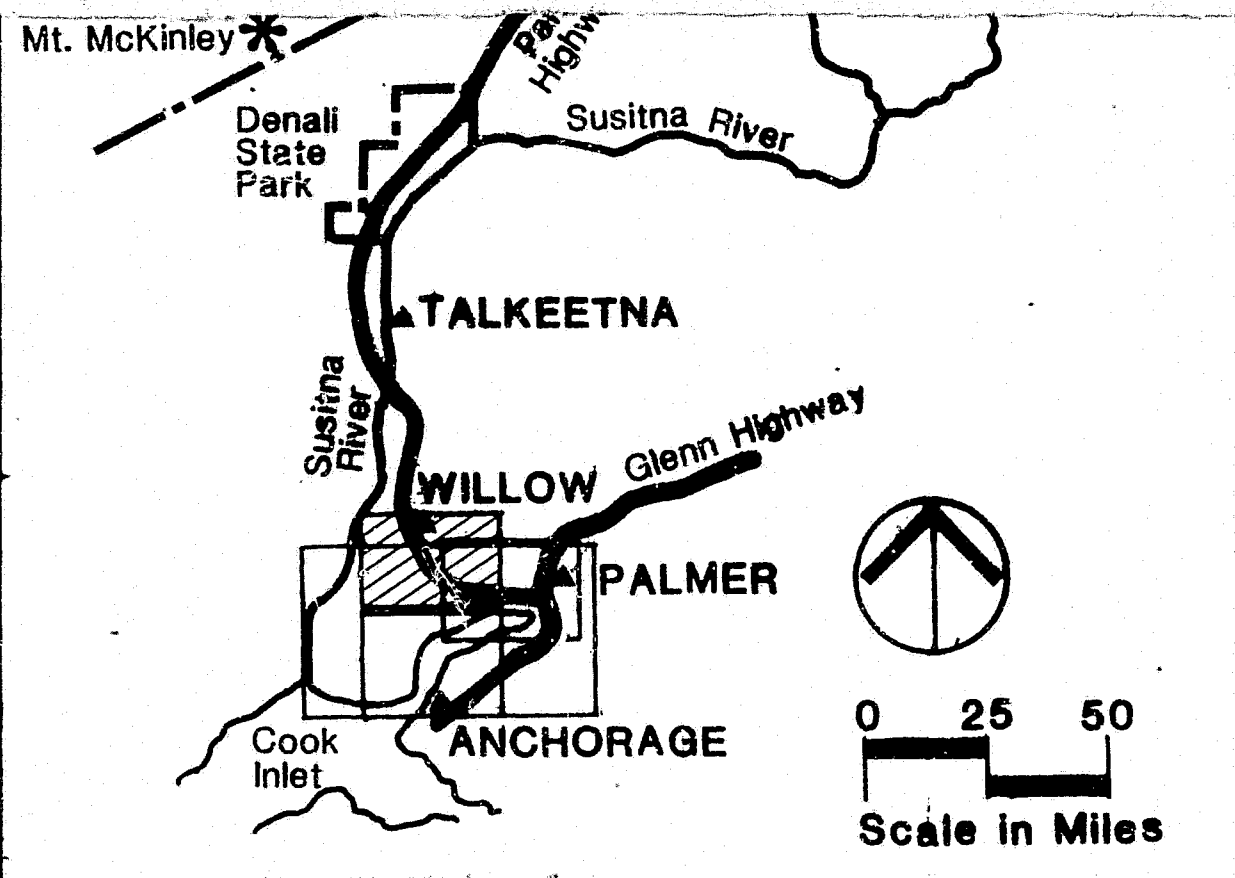
DATE

DRAWING NO.

6



RIW



ALASKA POWER AUTHORITY

SUSITNA HYDROELECTRIC PROJECT

South Study Area Willow Subarea

LAND USE

HARZA-EBASCO

SUSITNA JOINT VENTURE

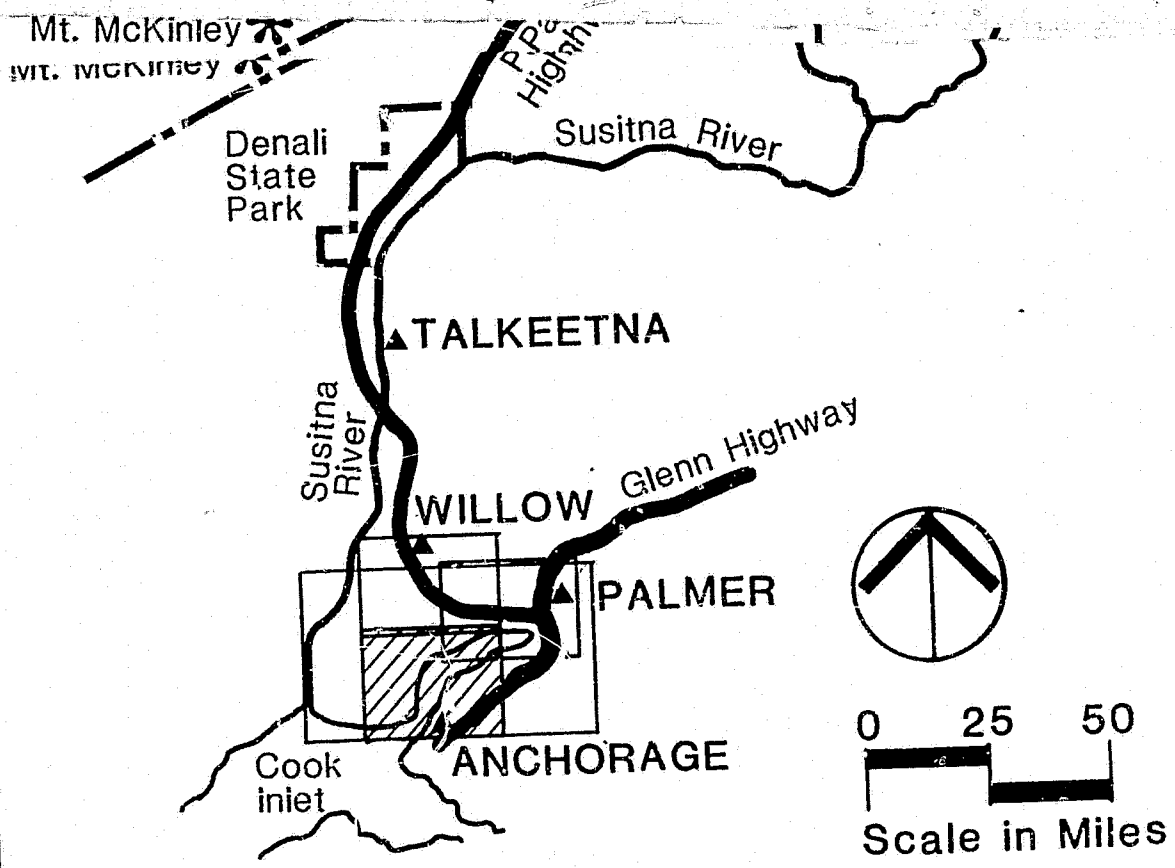
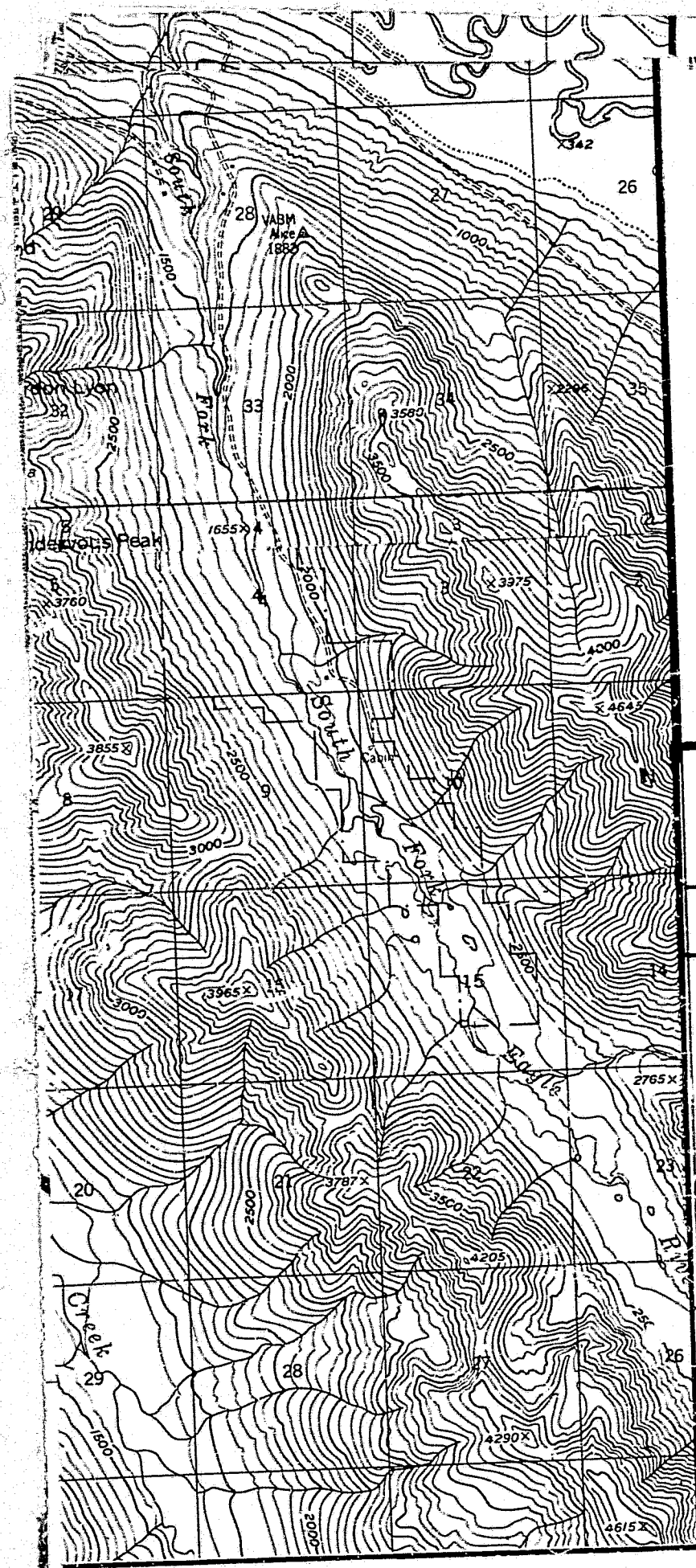
APPROVED

ANCHORAGE,
ALASKA

DATE

DRAWING NO.

7



ALASKA POWER AUTHORITY
SUSITNA HYDROELECTRIC PROJECT
South Study Area
Anchorage Subarea
EXISTING FEATURES

HARZA-EBASCO

SUSITNA JOINT VENTURE

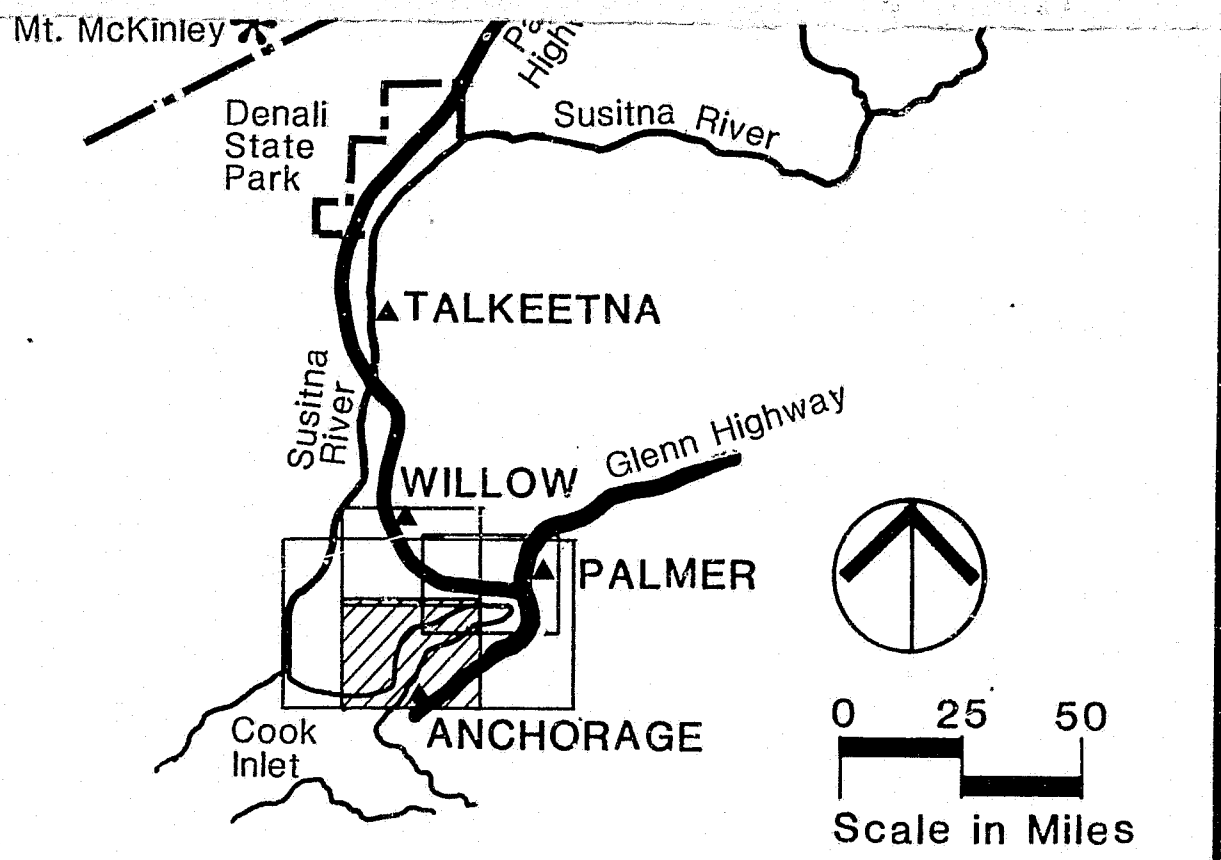
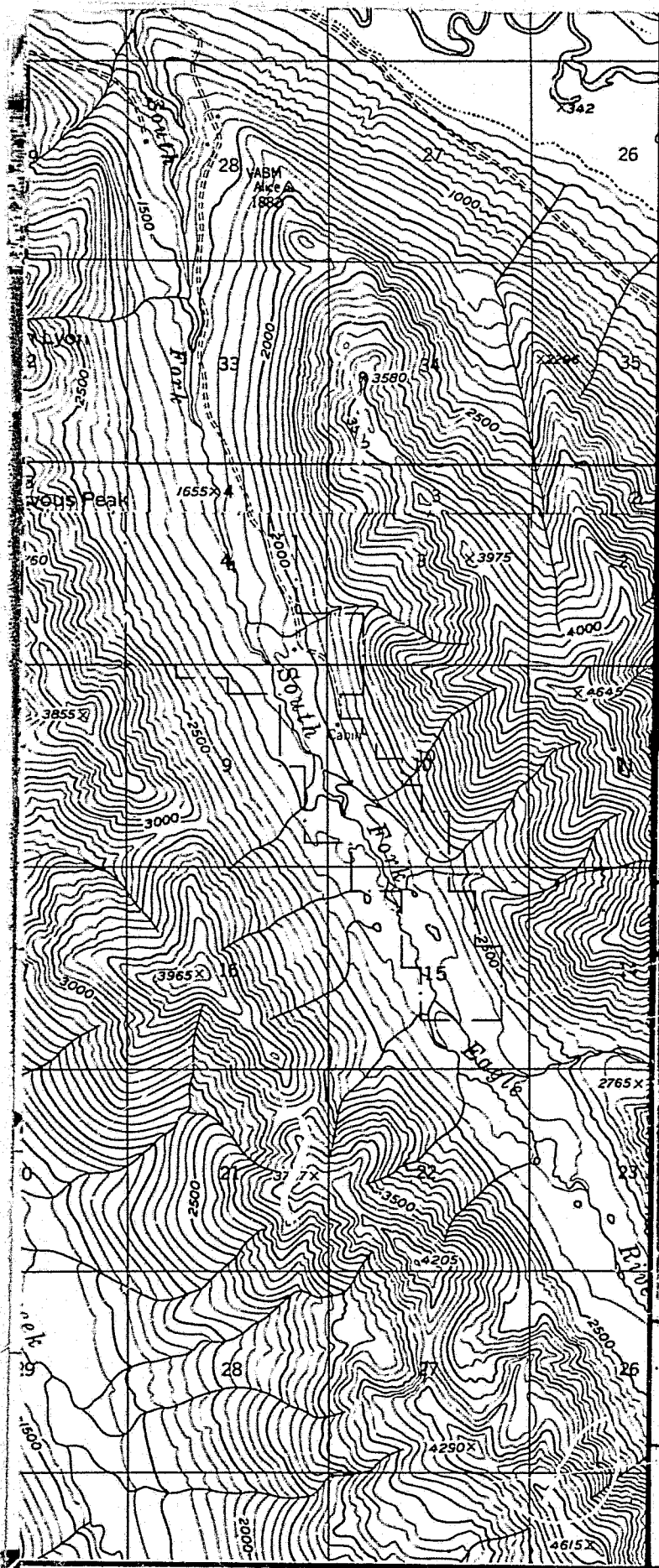
APPROVED

ANCHORAGE,
ALASKA

DATE

DRAWING NO.

8



ALASKA POWER AUTHORITY

SUSITNA HYDROELECTRIC PROJECT

**South Study Area
Anchorage Subarea**

LAND OWNERSHIP

HARZA-EBASCO

SUSITNA JOINT VENTURE

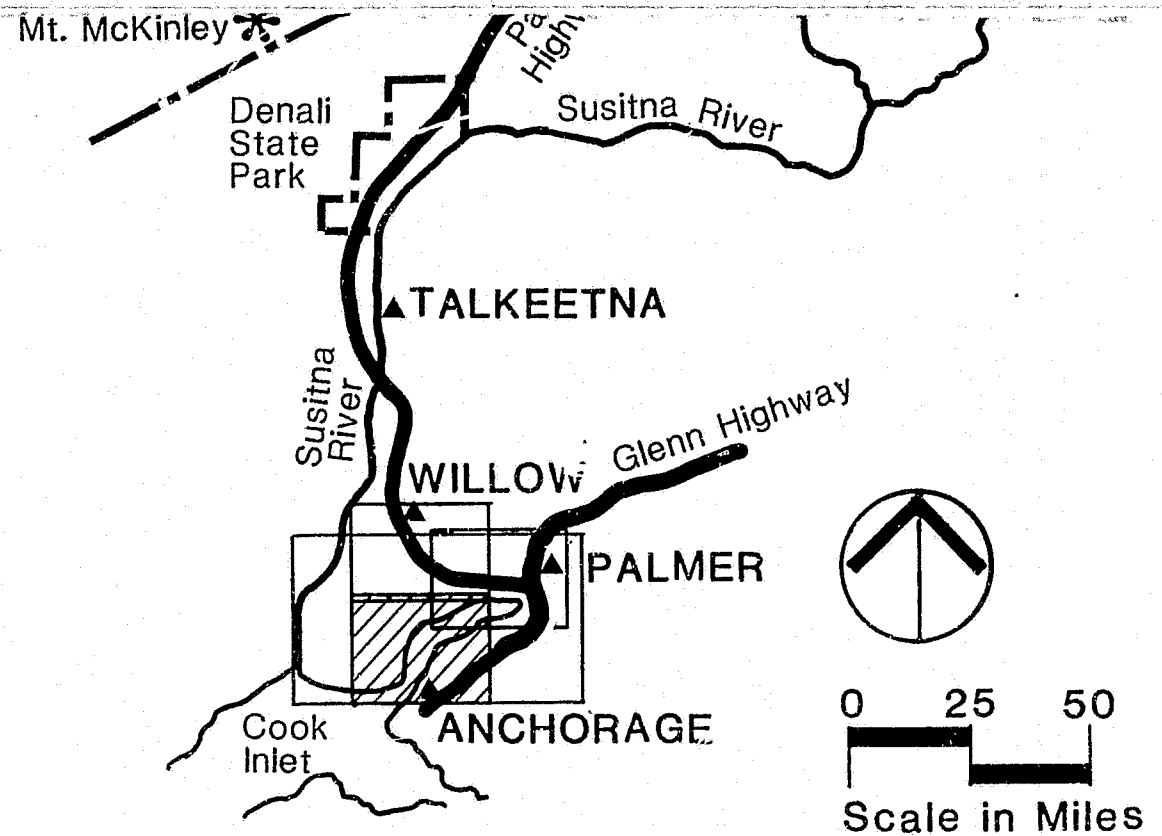
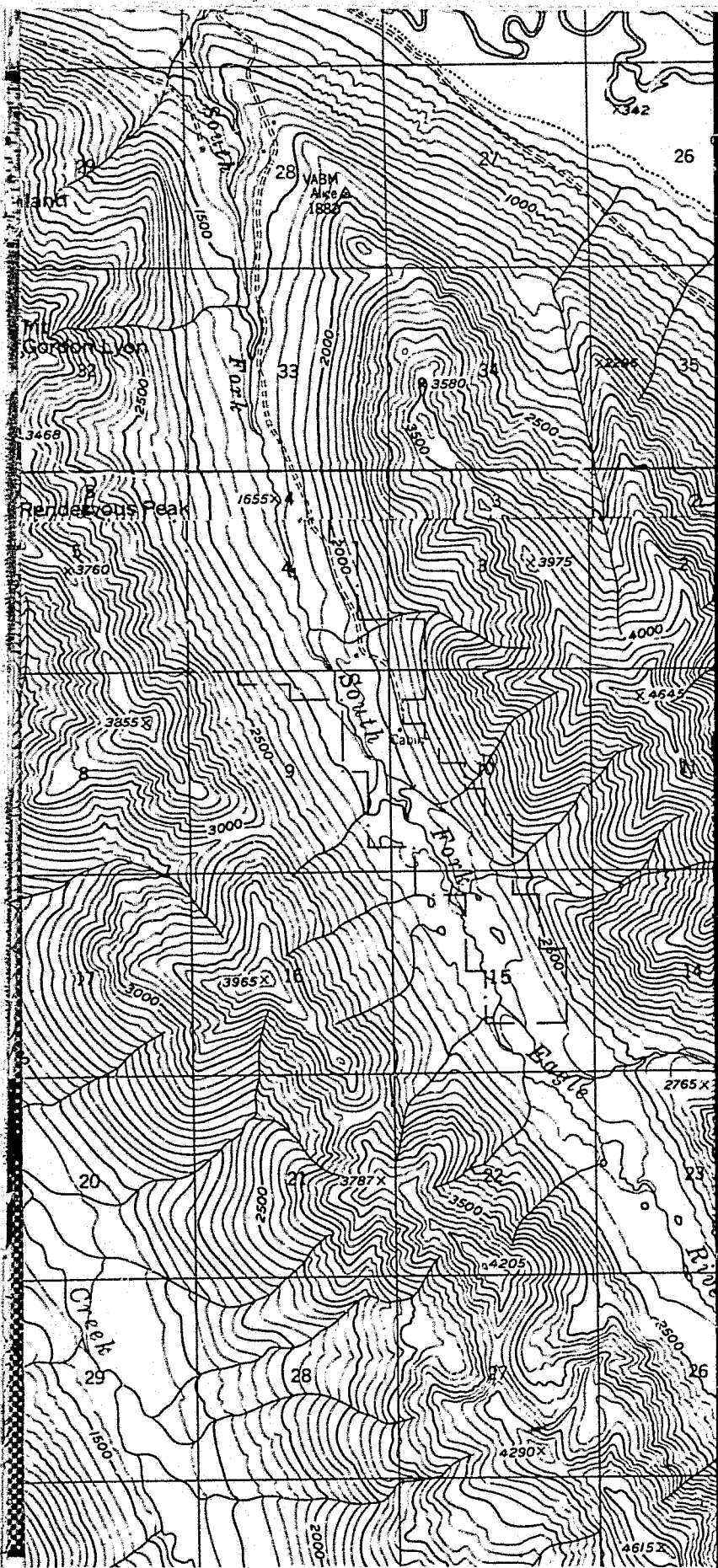
ANCHORAGE,
ALASKA

APPROVED

DATE

DRAWING NO.

9



ALASKA POWER AUTHORITY

SUSITNA HYDROELECTRIC PROJECT

**South Study Area
Anchorage Subarea**

LAND USE

HARZA-EBASCO

SUSITNA JOINT VENTURE

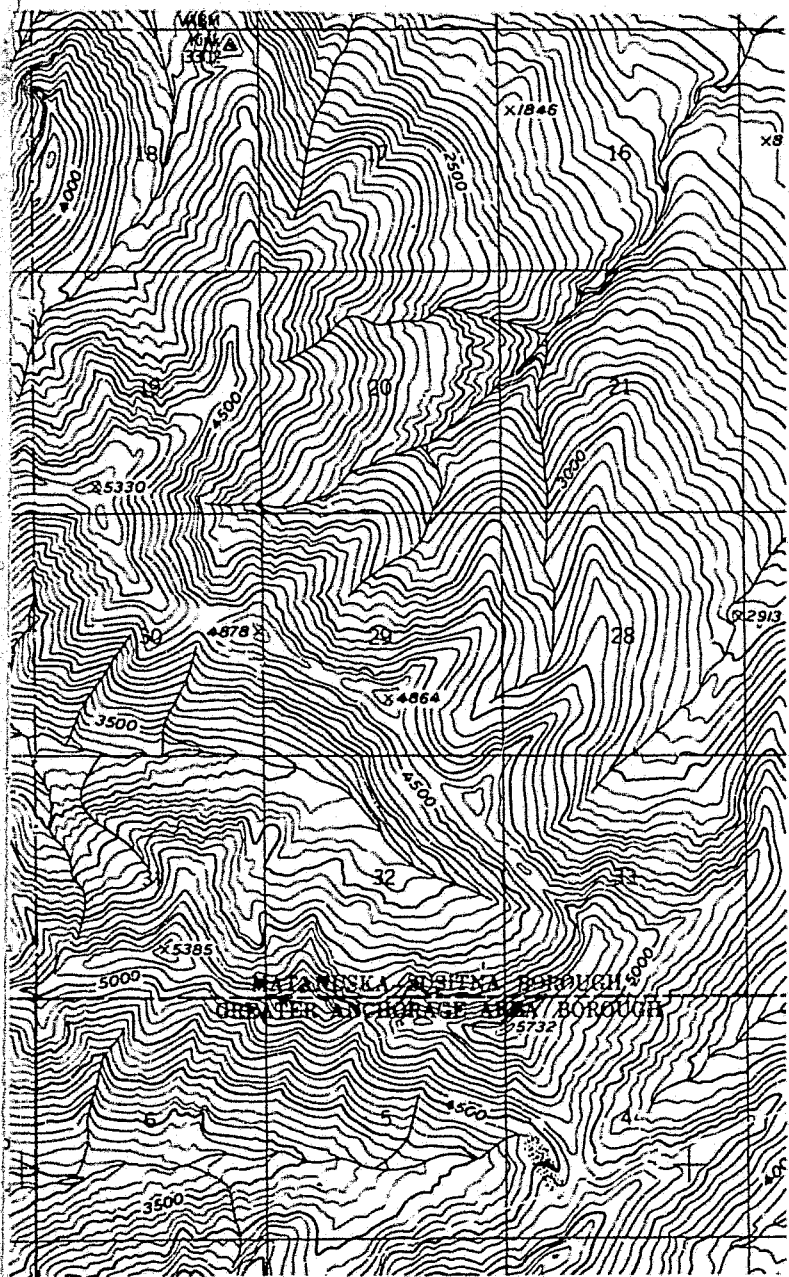
APPROVED

ANCHORAGE,
ALASKA

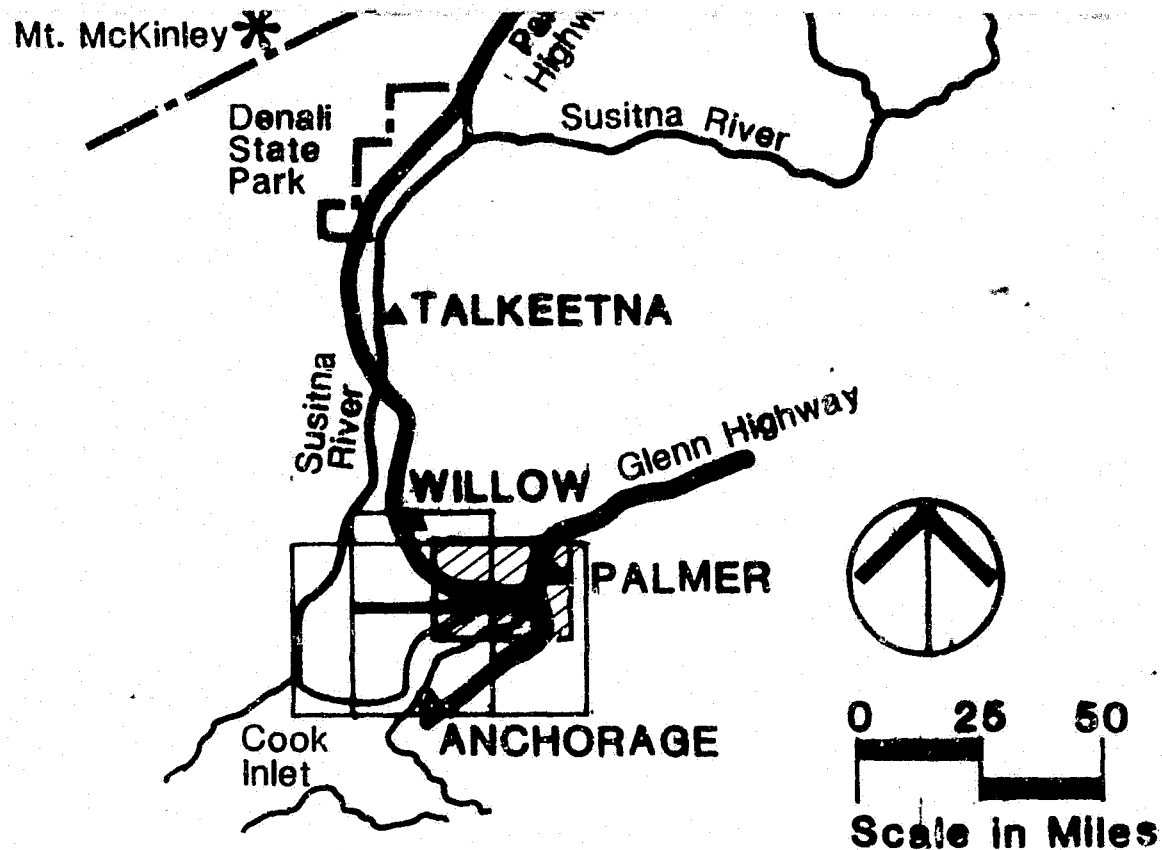
DATE

DRAWING NO.

10



R 3 E



ALASKA POWER AUTHORITY

SUSITNA HYDROELECTRIC PROJECT

South Study Area Palmer Subarea

EXISTING FEATURES

HARZA-EBASCO

SUSITNA JOINT VENTURE

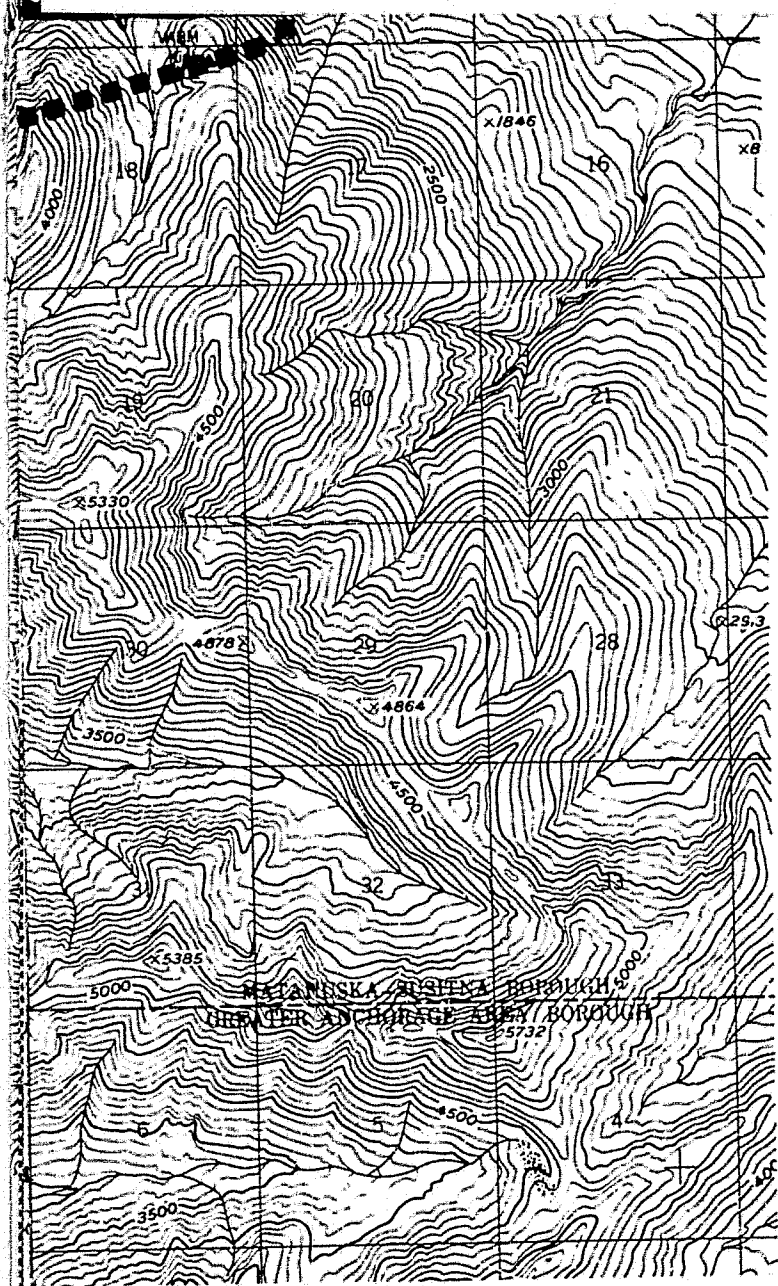
APPROVED

ANCHORAGE,
ALASKA

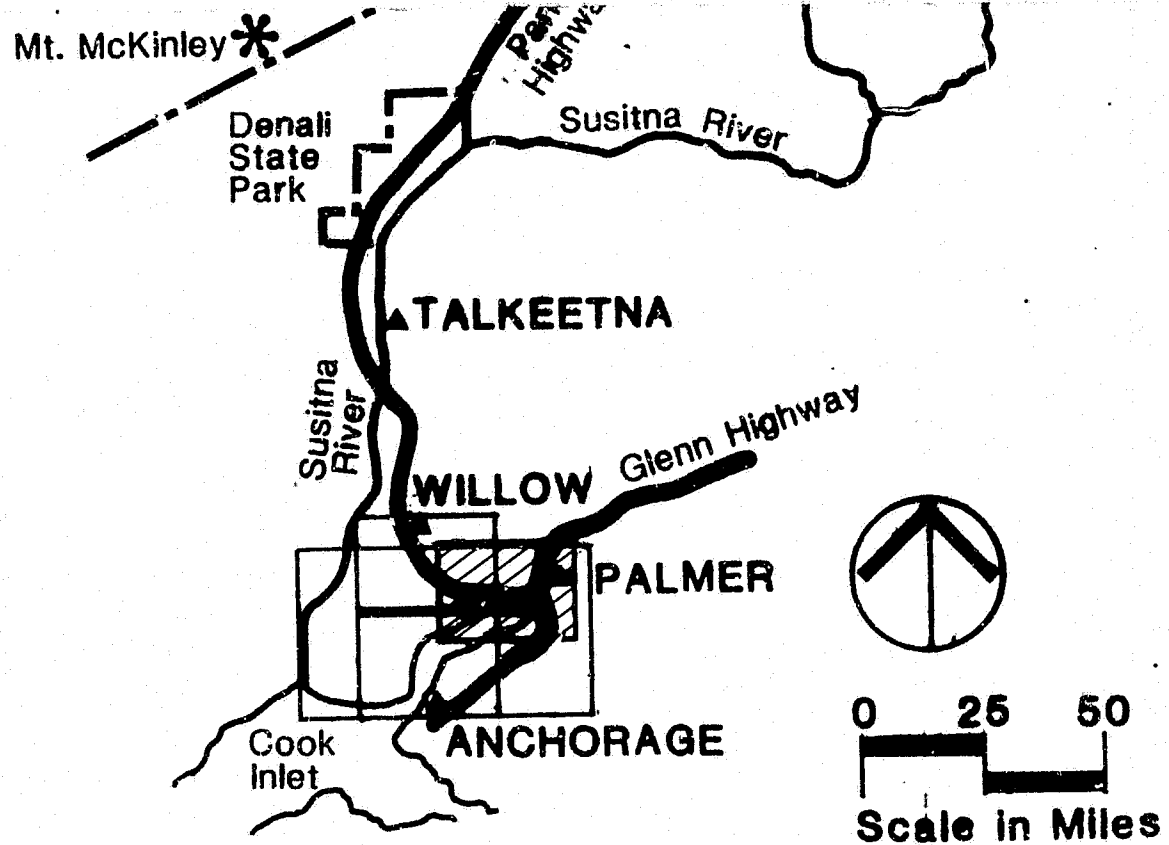
DATE

DRAWING NO.

11



R 3 E



ALASKA POWER AUTHORITY

SUSITNA HYDROELECTRIC PROJECT

South Study Area

Palmer Subarea

LAND OWNERSHIP

HARZA-EBASCO

SUSITNA JOINT VENTURE

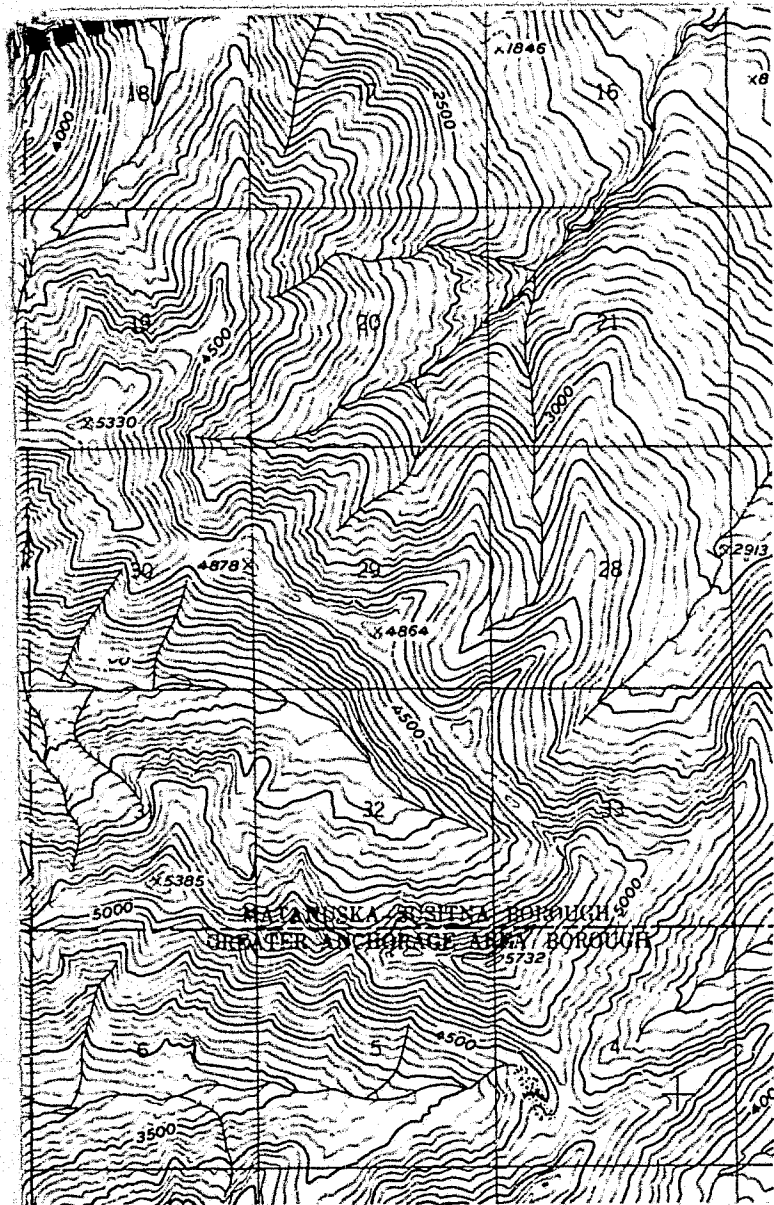
APPROVED

ANCHORAGE,
ALASKA

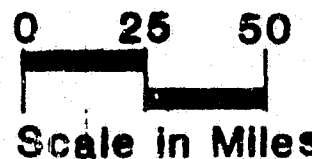
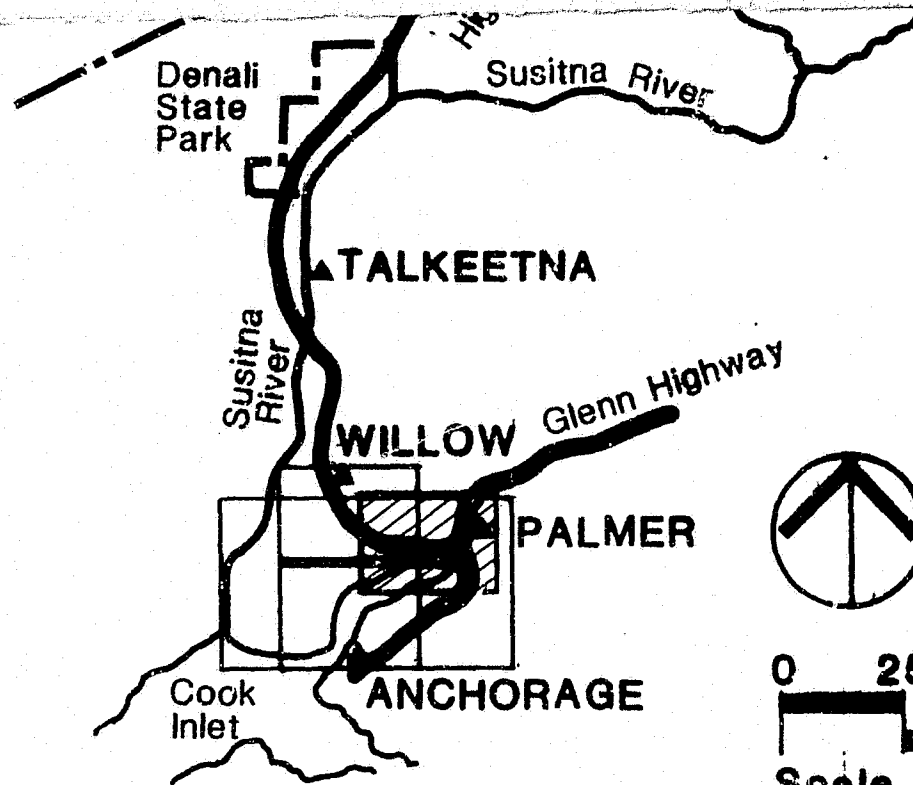
DATE

DRAWING NO.

12



R 3 E



ALASKA POWER AUTHORITY

SUSITNA HYDROELECTRIC PROJECT

South Study Area Palmer Subarea

LAND USE

HARZA-EBASCO

SUSITNA JOINT VENTURE

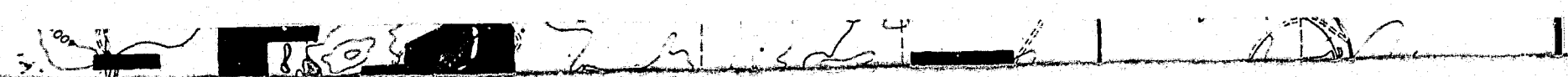
APPROVED

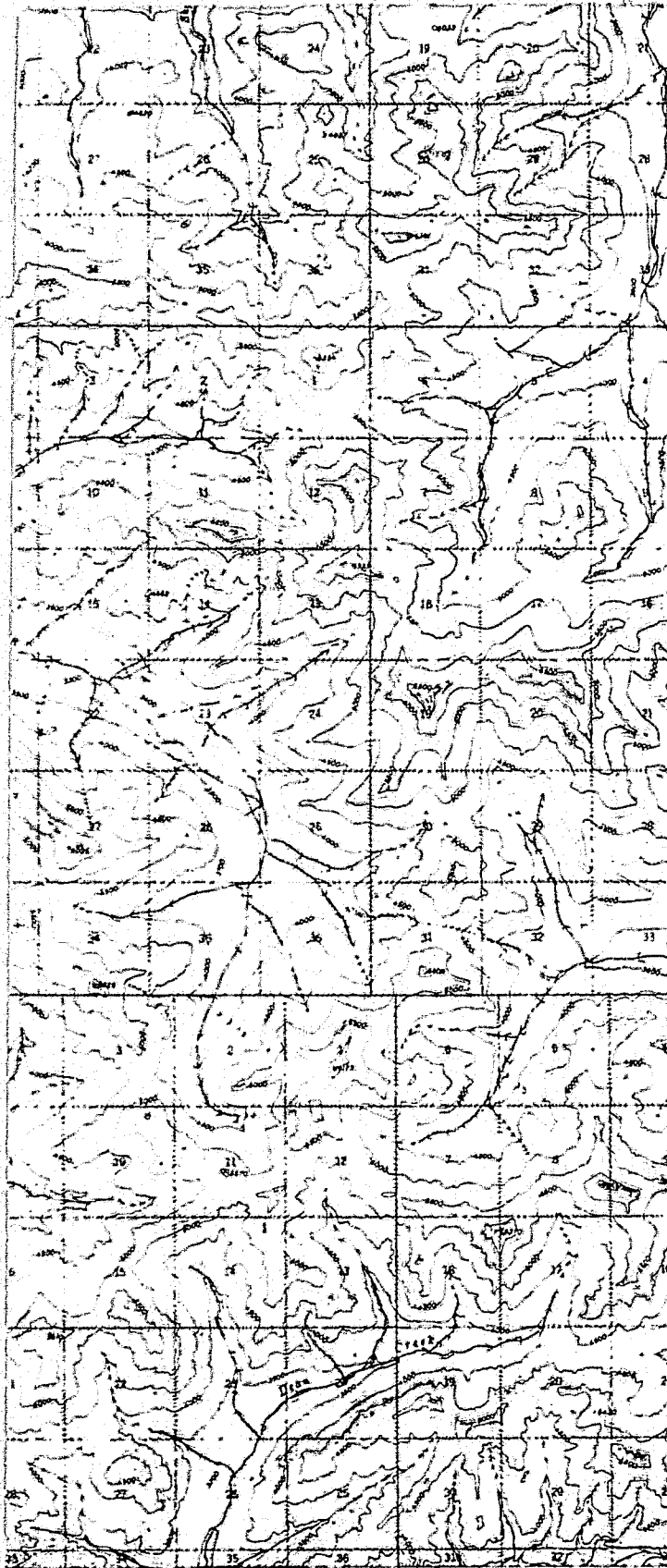
ANCHORAGE,
ALASKA

DATE

DRAWING NO.

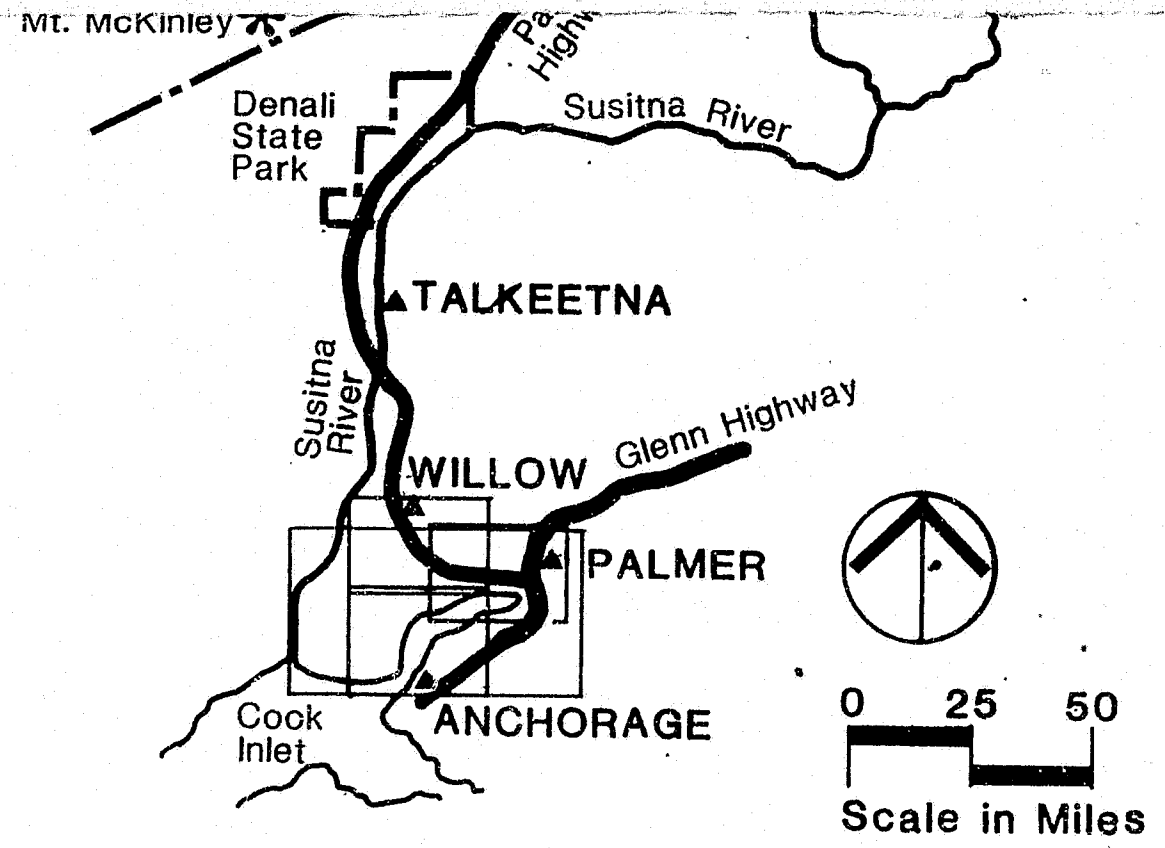
13





R 4 W

R 3 W



ALASKA POWER AUTHORITY

SUSITNA HYDROELECTRIC PROJECT

North Study Area Healy Subarea

EXISTING FEATURES

HARZA-EBASCO

SUSITNA JOINT VENTURE

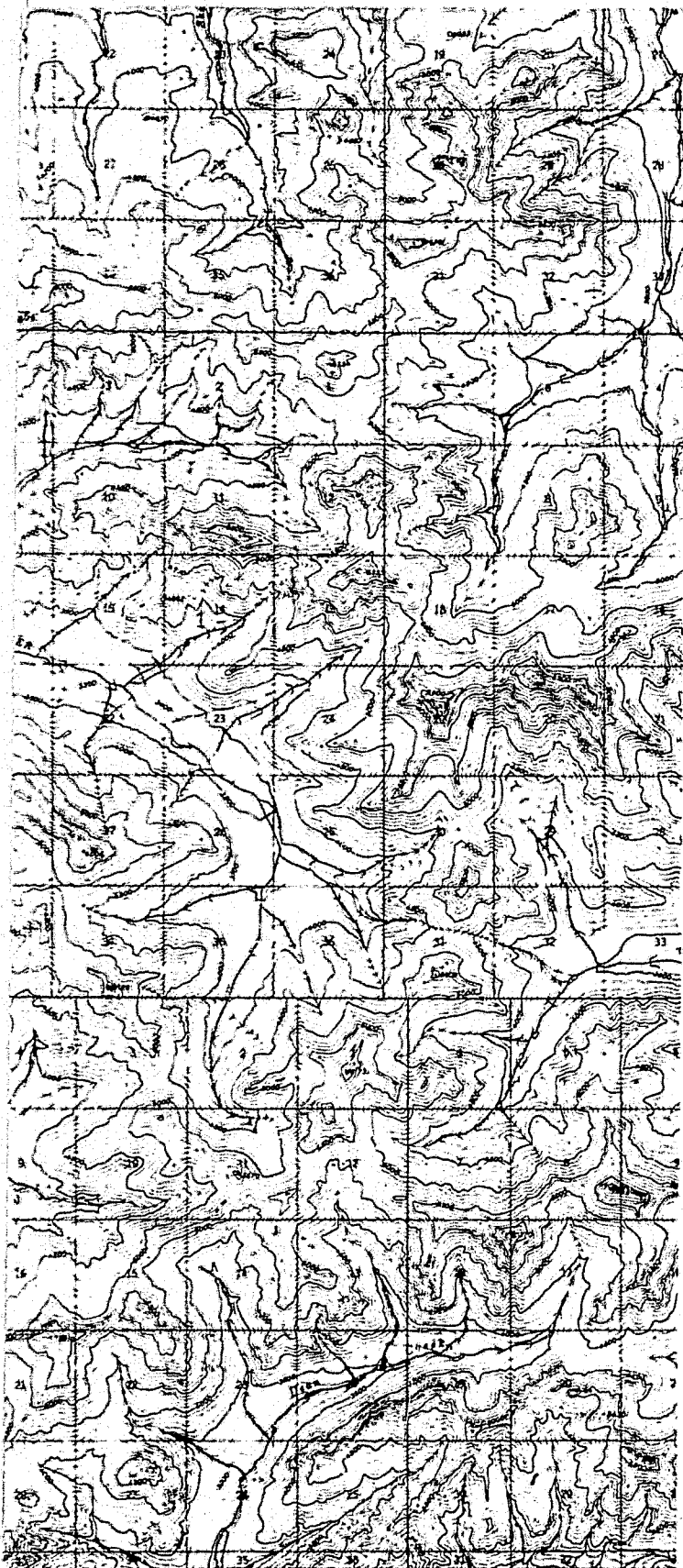
APPROVED

ANCHORAGE,
ALASKA

DATE

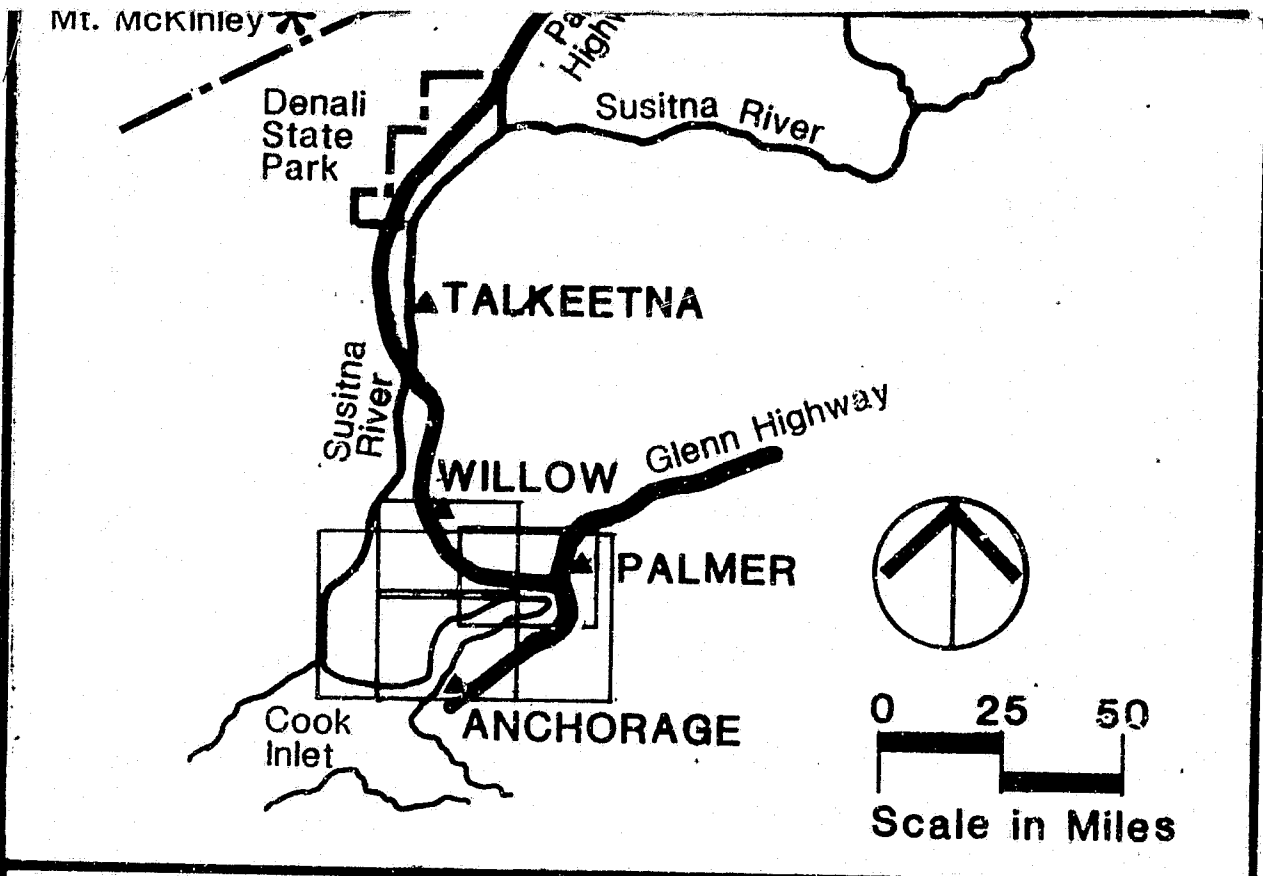
DRAWING NO.

14



R 4 W

R 3 W



ALASKA POWER AUTHORITY

SUSITNA HYDROELECTRIC PROJECT

North Study Area Healy Subarea

LAND OWNERSHIP

HARZA-EBASCO

SUSITNA JOINT VENTURE

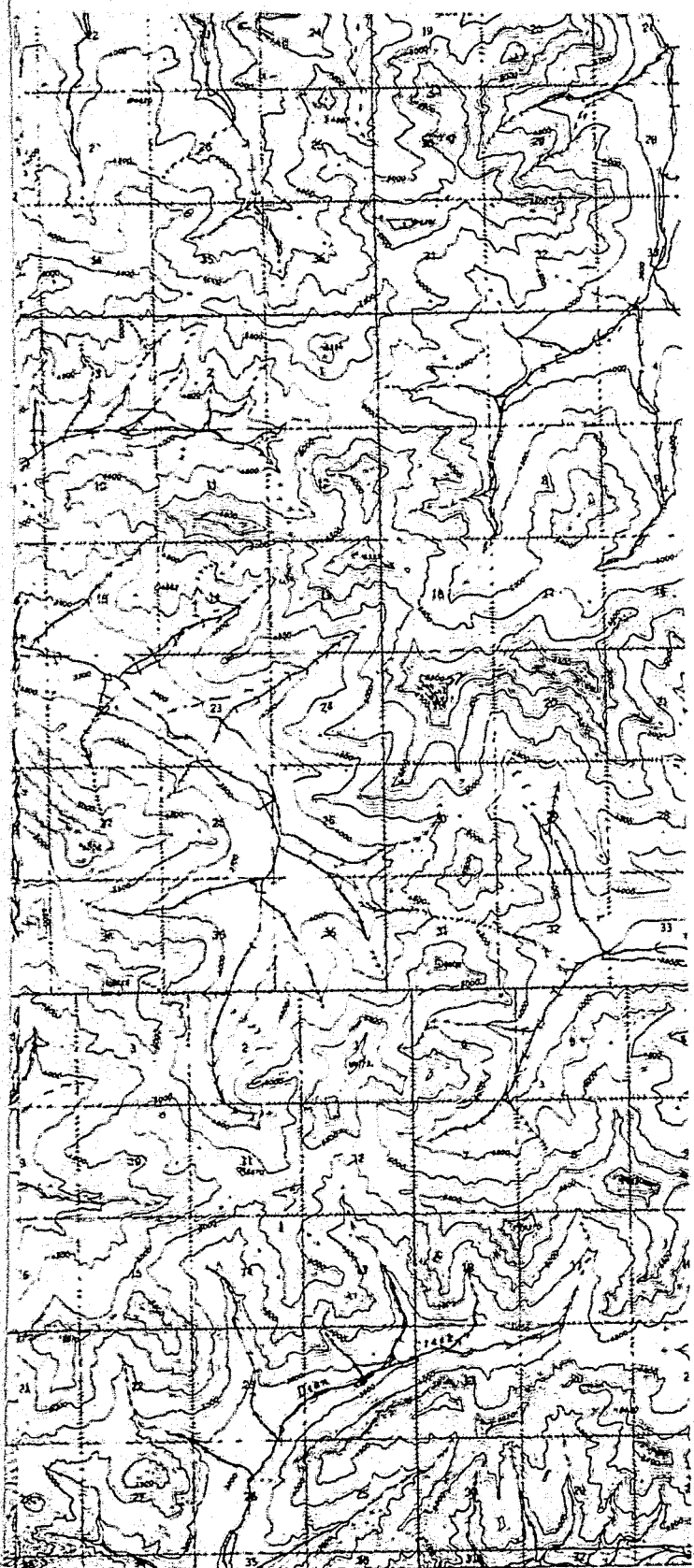
APPROVED

ANCHORAGE,
ALASKA

DATE

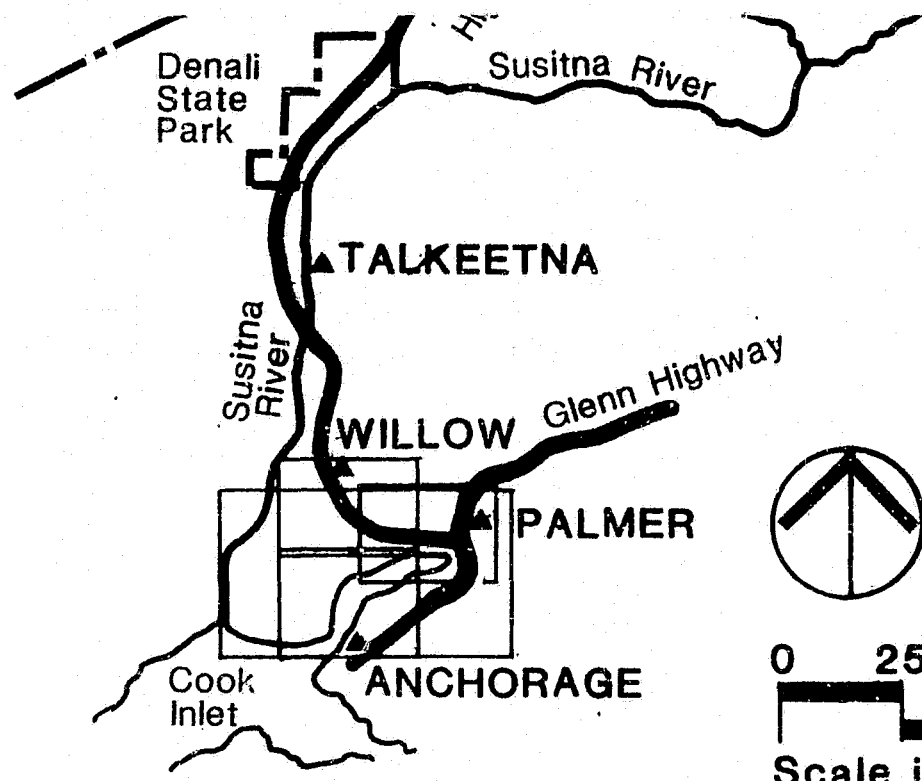
DRAWING NO.

15



R 4 W

R 3 W



0 25 50
Scale in Miles

ALASKA POWER AUTHORITY

SUSITNA HYDROELECTRIC PROJECT

North Study Area Healy Subarea

LAND USE

HARZA-EBASCO

SUSITNA JOINT VENTURE

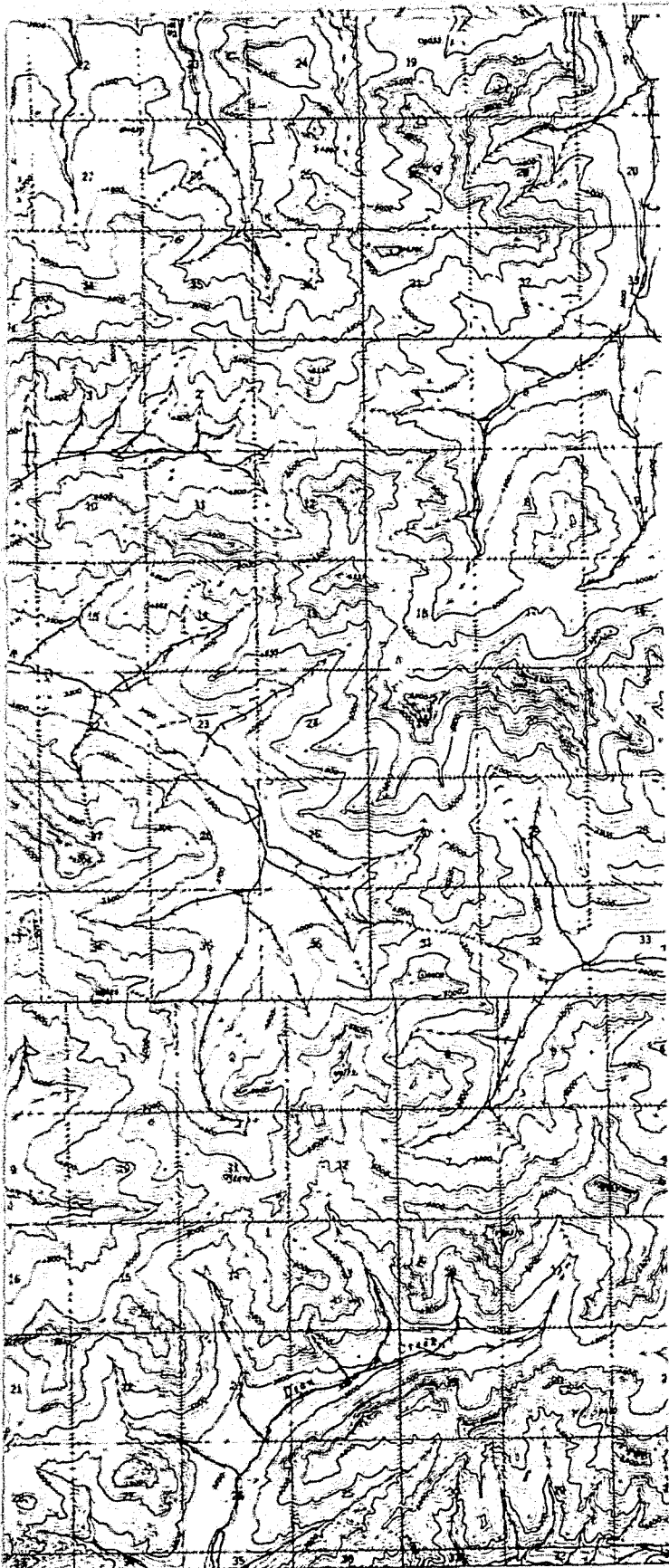
APPROVED

DATE

DRAWING NO.

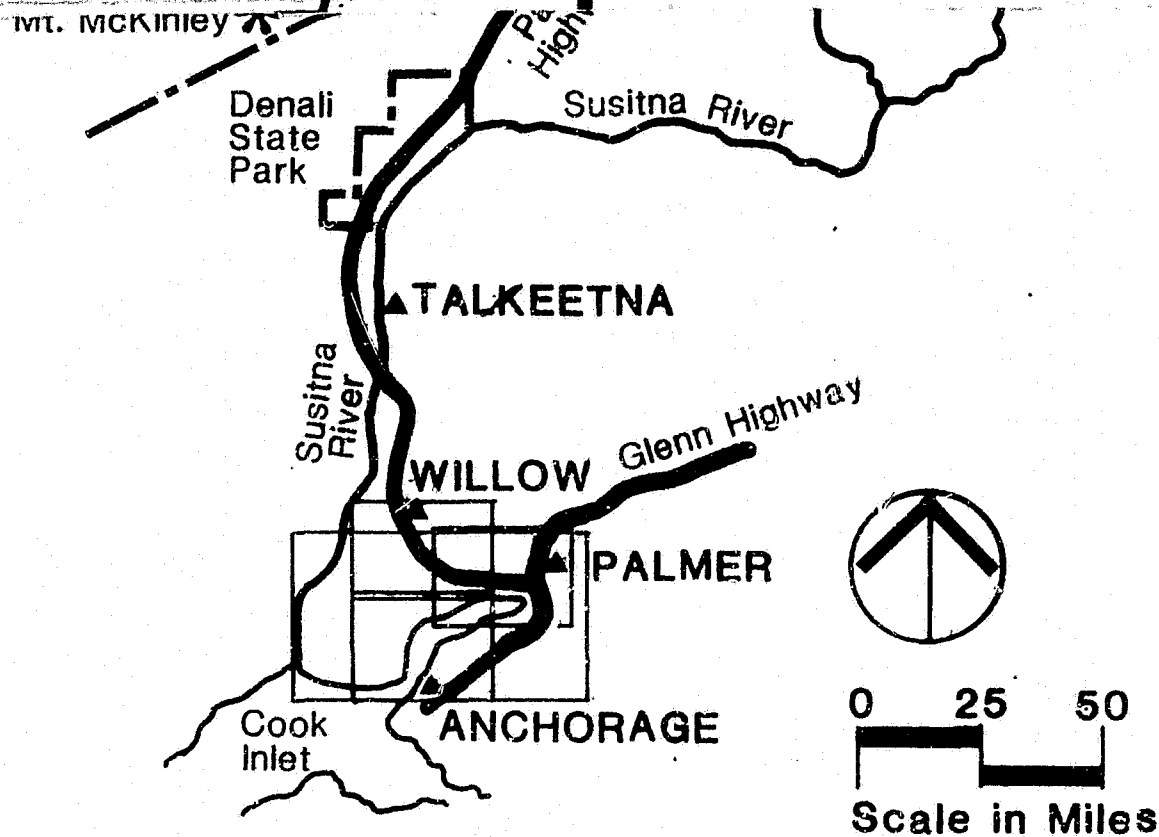
ANCHORAGE,
ALASKA

16



R 4 W

R 3 W



ALASKA POWER AUTHORITY

SUSITNA HYDROELECTRIC PROJECT

North Study Area
Healy Subarea

VEGETATION RESOURCES

HARZA-EBASCO

SUSITNA JOINT VENTURE

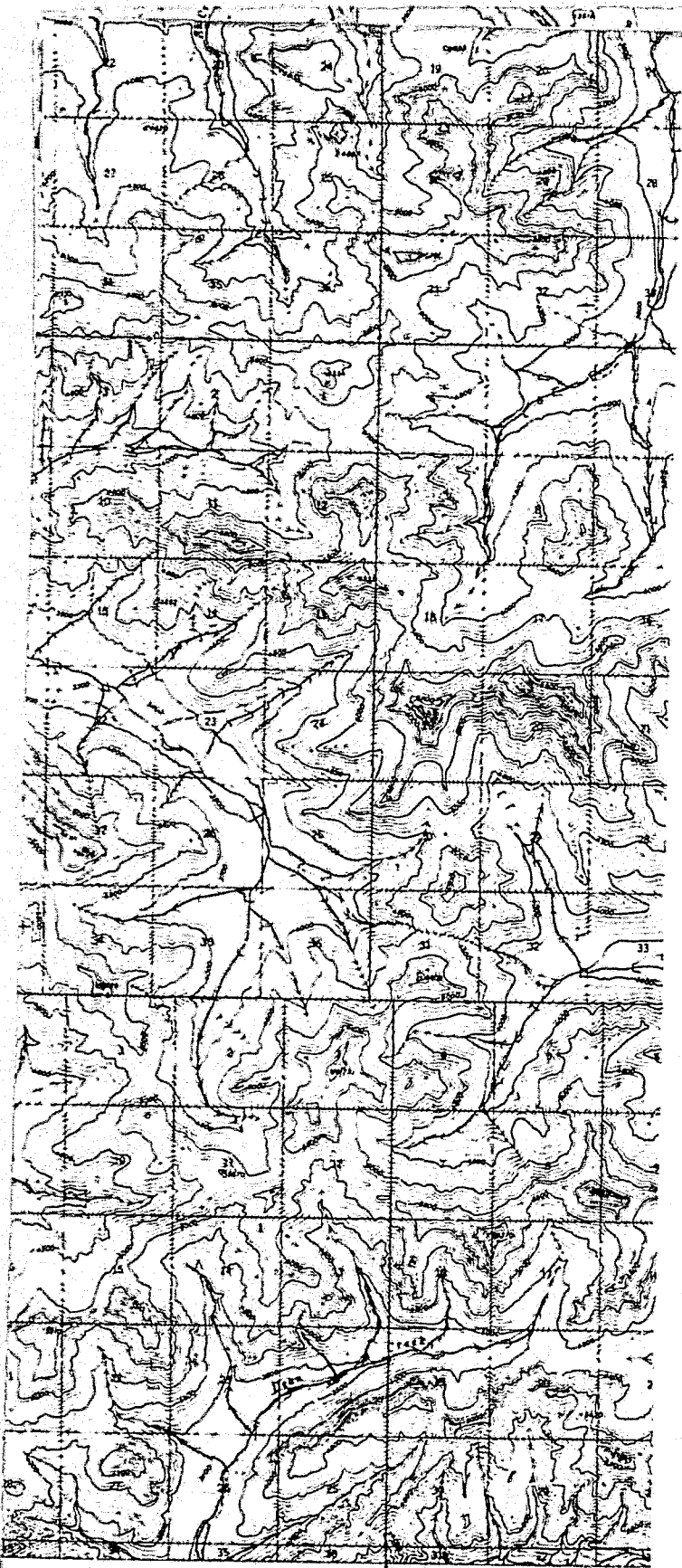
APPROVED

DATE

DRAWING NO.

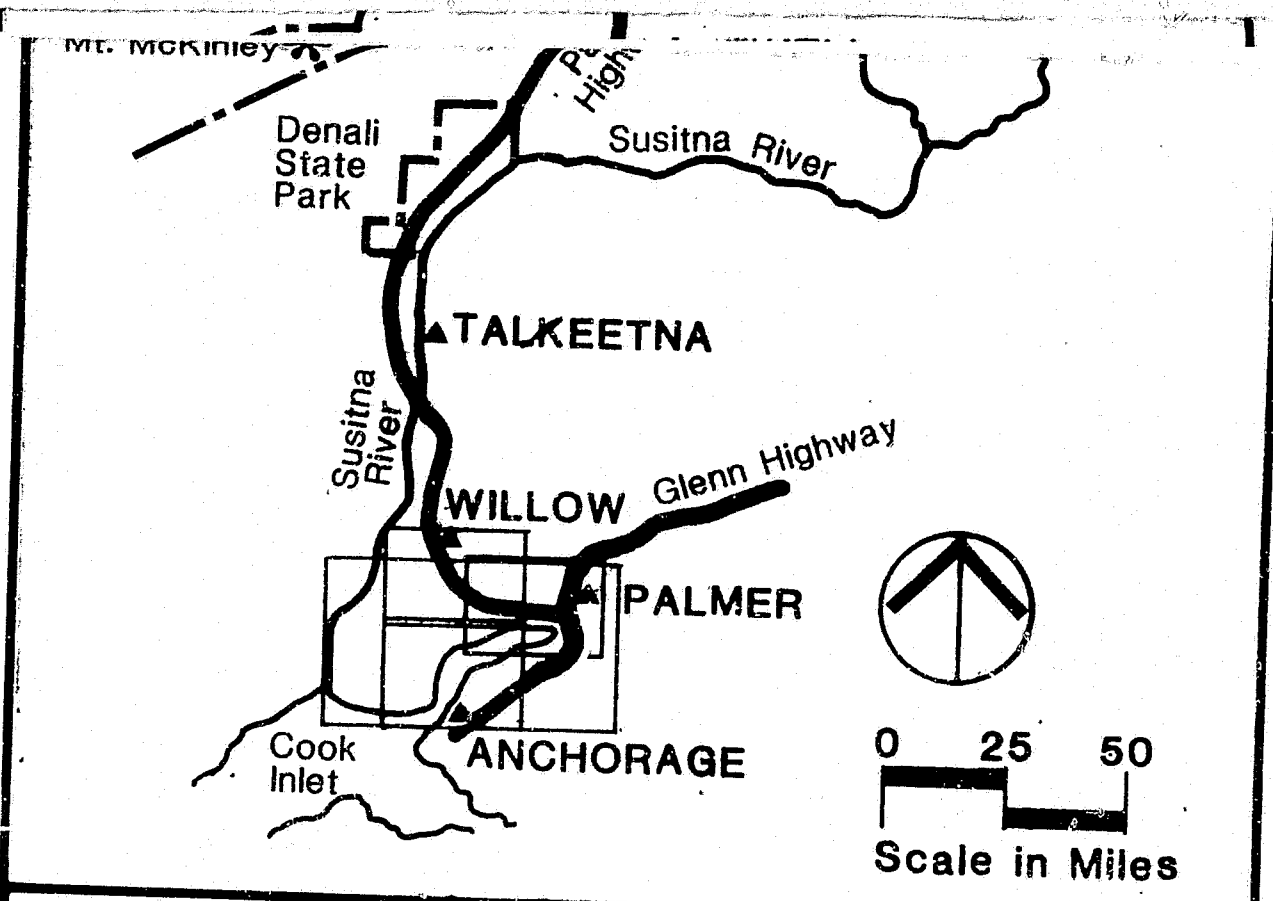
ANCHORAGE,
ALASKA

17



R 4 W

R 3 W



ALASKA POWER AUTHORITY

SUSITNA HYDROELECTRIC PROJECT

North Study Area
Healy Subarea

VISUAL RESOURCES

HARZA-EBASCO

SUSITNA JOINT VENTURE

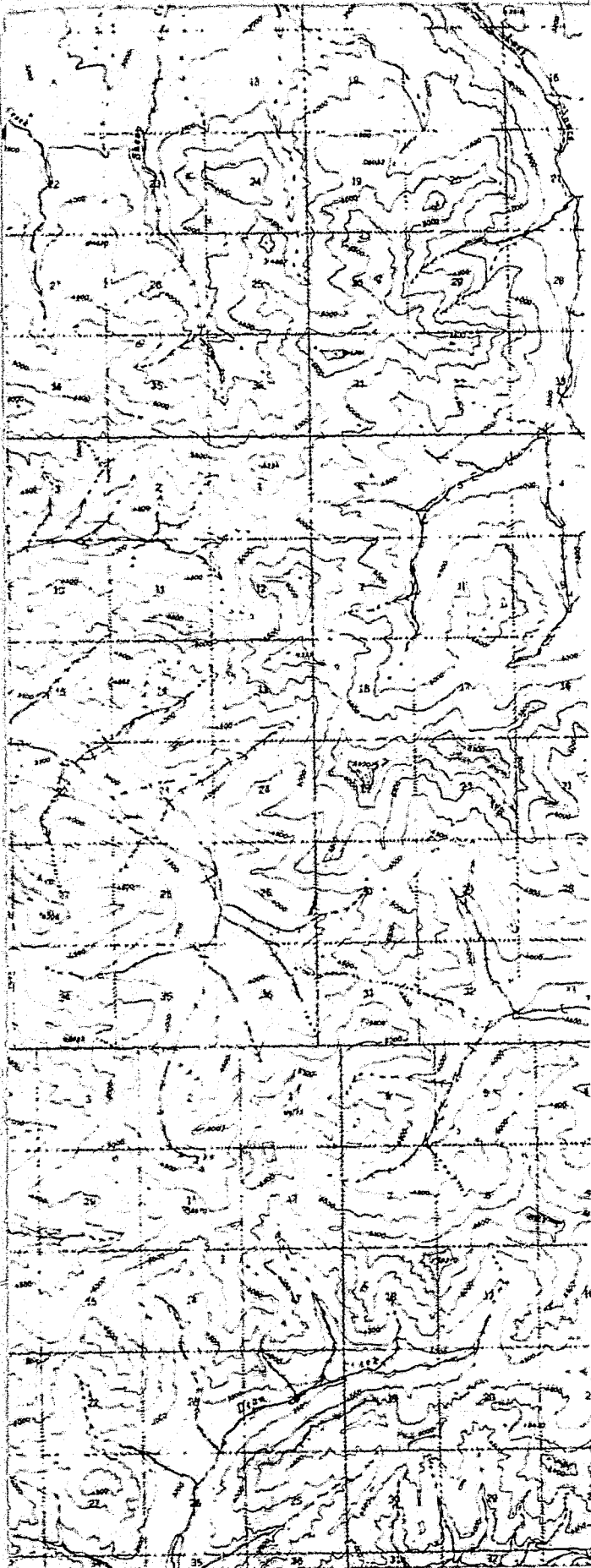
APPROVED

ANCHORAGE,
ALASKA

DATE

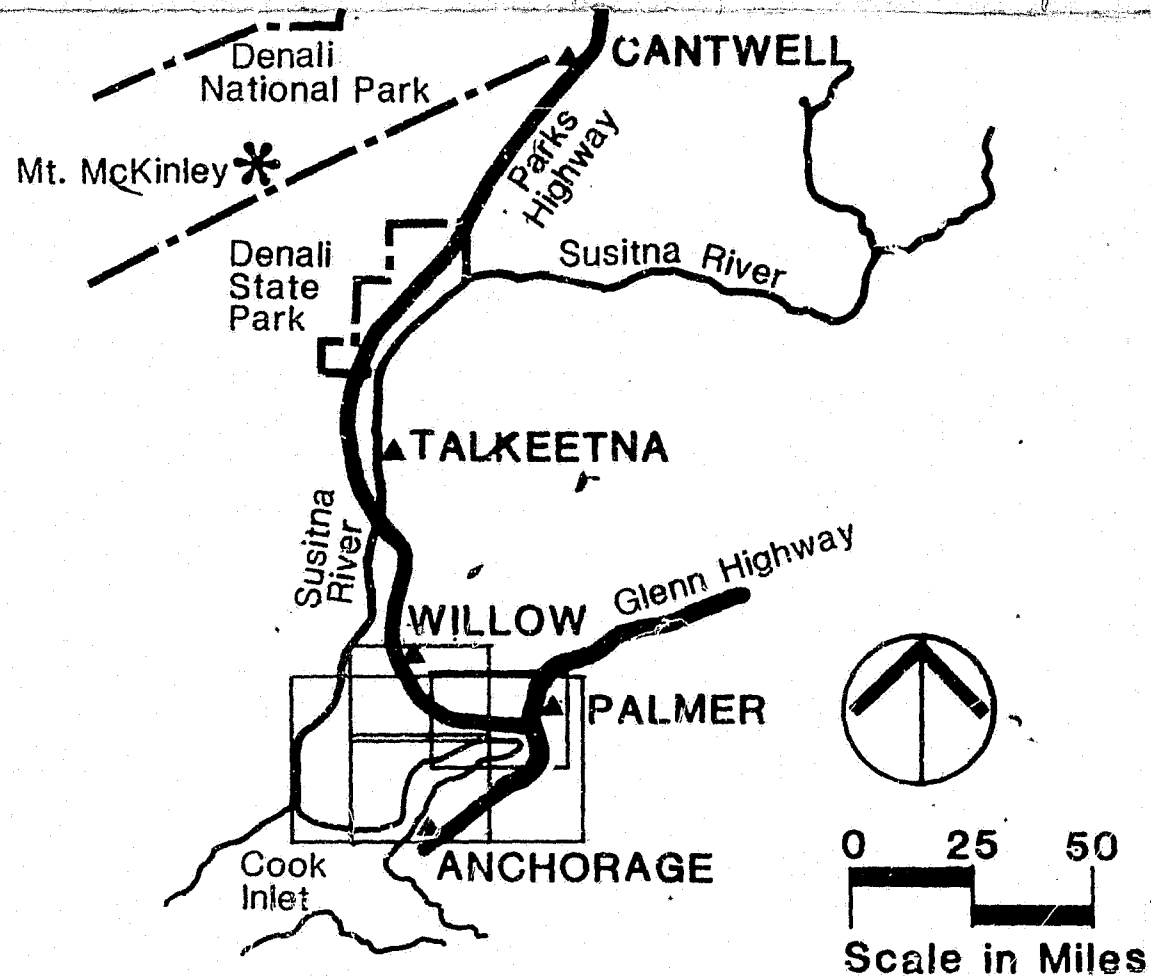
DRAWING NO.

18



R 4 W

R 3 W



ALASKA POWER AUTHORITY

SUSITNA HYDROELECTRIC PROJECT

North Study Area
Healy Subarea

FISH & WILDLIFE RESOURCES

HARZA-EBASCO

SUSITNA JOINT VENTURE

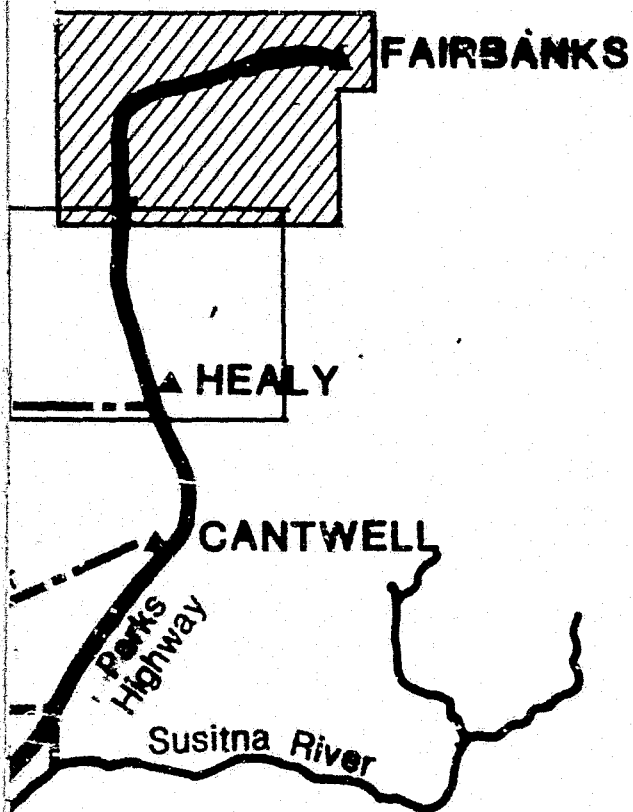
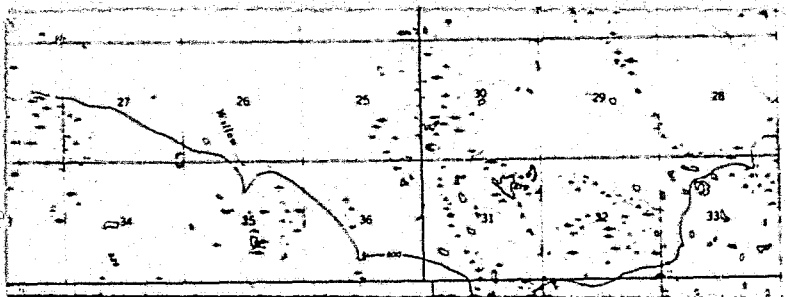
APPROVED

ANCHORAGE,
ALASKA

DATE

DRAWING NO.

19

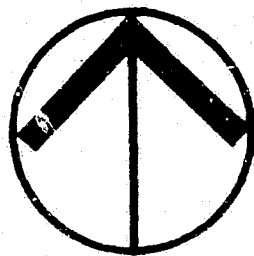
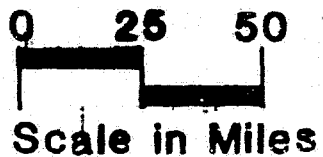


TALKEETNA

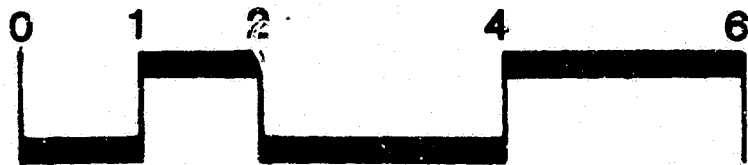
WILLOW Glenn Highway

PALMER

ANCHORAGE



NORTH



SCALE IN MILES

ALASKA POWER AUTHORITY

SUSITNA HYDROELECTRIC PROJECT

North Study Area

Fairbanks Subarea

EXISTING FEATURES

HARZA-EBASCO

SUSITNA JOINT VENTURE

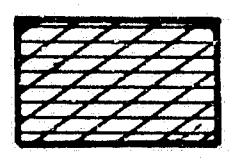
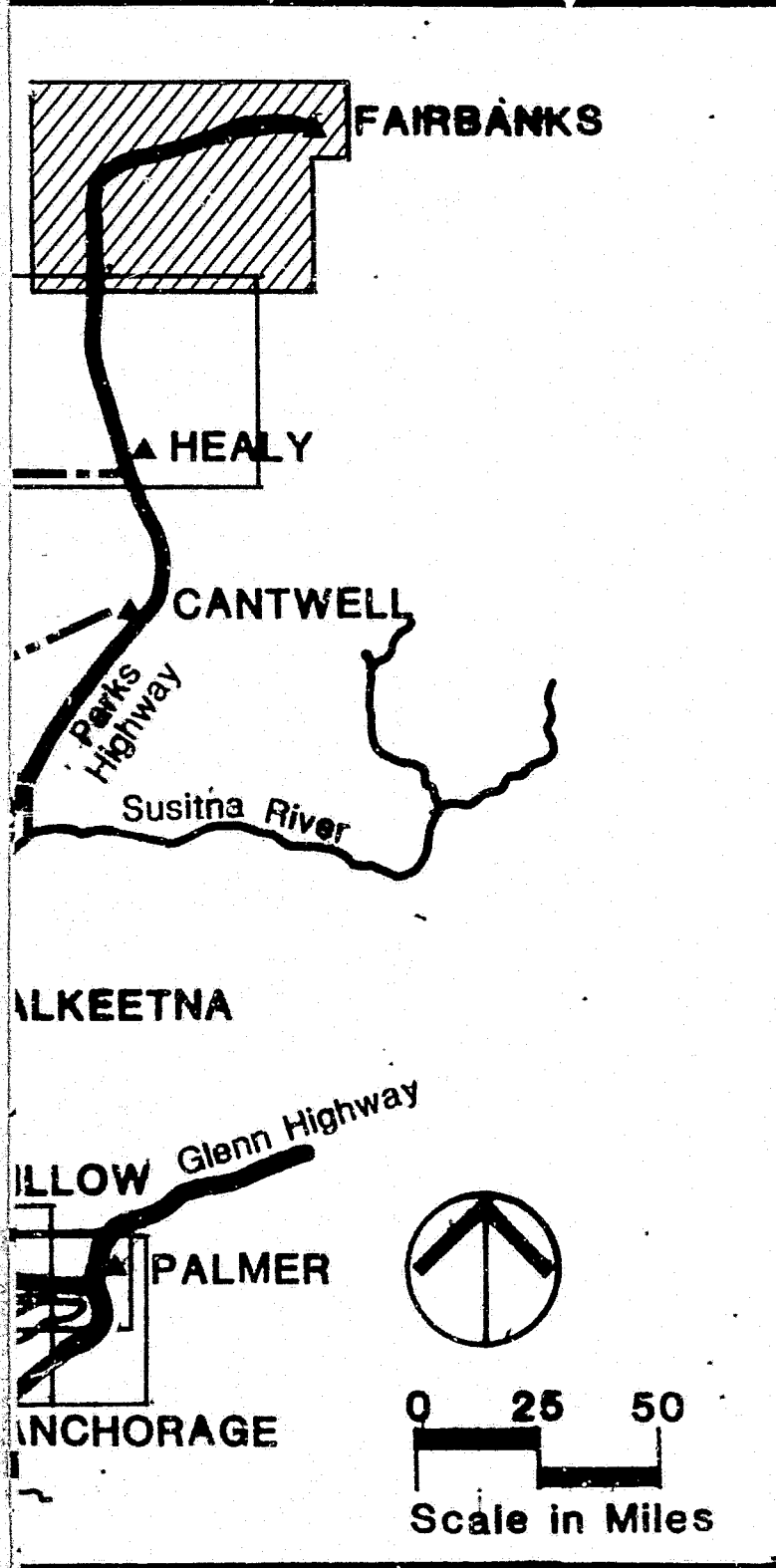
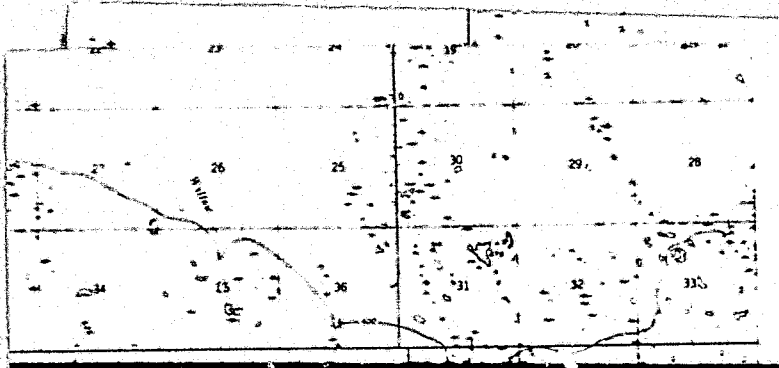
APPROVED

DATE

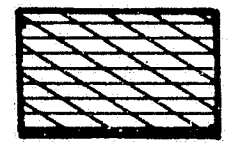
DRAWING NO.

ANCHORAGE,
ALASKA

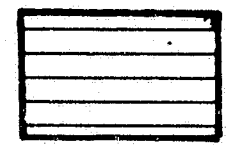
20



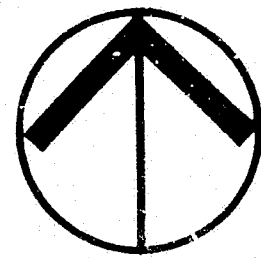
Federal + Native



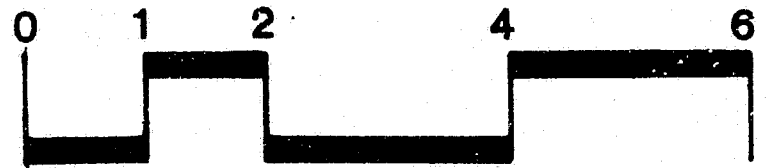
Federal + State



State + Private



NORTH



SCALE IN MILES

ALASKA POWER AUTHORITY

SUSITNA HYDROELECTRIC PROJECT

North Study Area

Fairbanks Subarea

LAND OWNERSHIP

HARZA-EBASCO

SUSITNA JOINT VENTURE

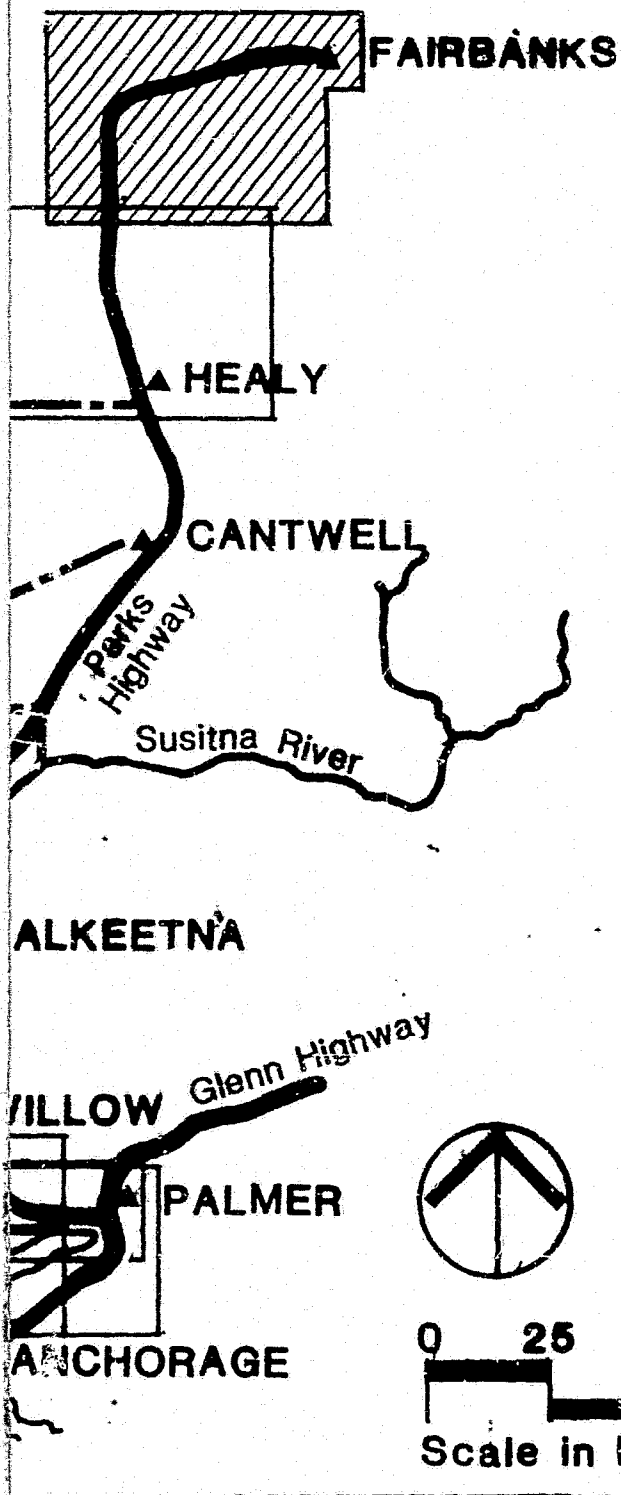
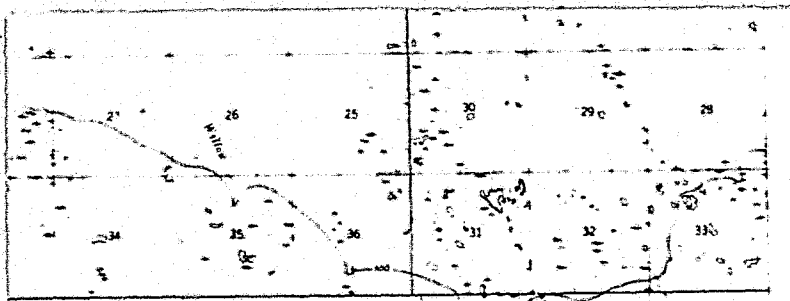
APPROVED

ANCHORAGE,
ALASKA

DATE

DRAWING NO.

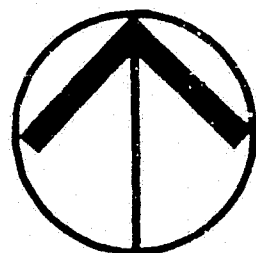
21



Other Public/Semi-Public



Vacant/Undeveloped



NORTH



SCALE IN MILES

ALASKA POWER AUTHORITY

SUSITNA HYDROELECTRIC PROJECT

North Study Area

Fairbanks Subarea

LAND USE

HARZA-EBASCO

SUSITNA JOINT VENTURE

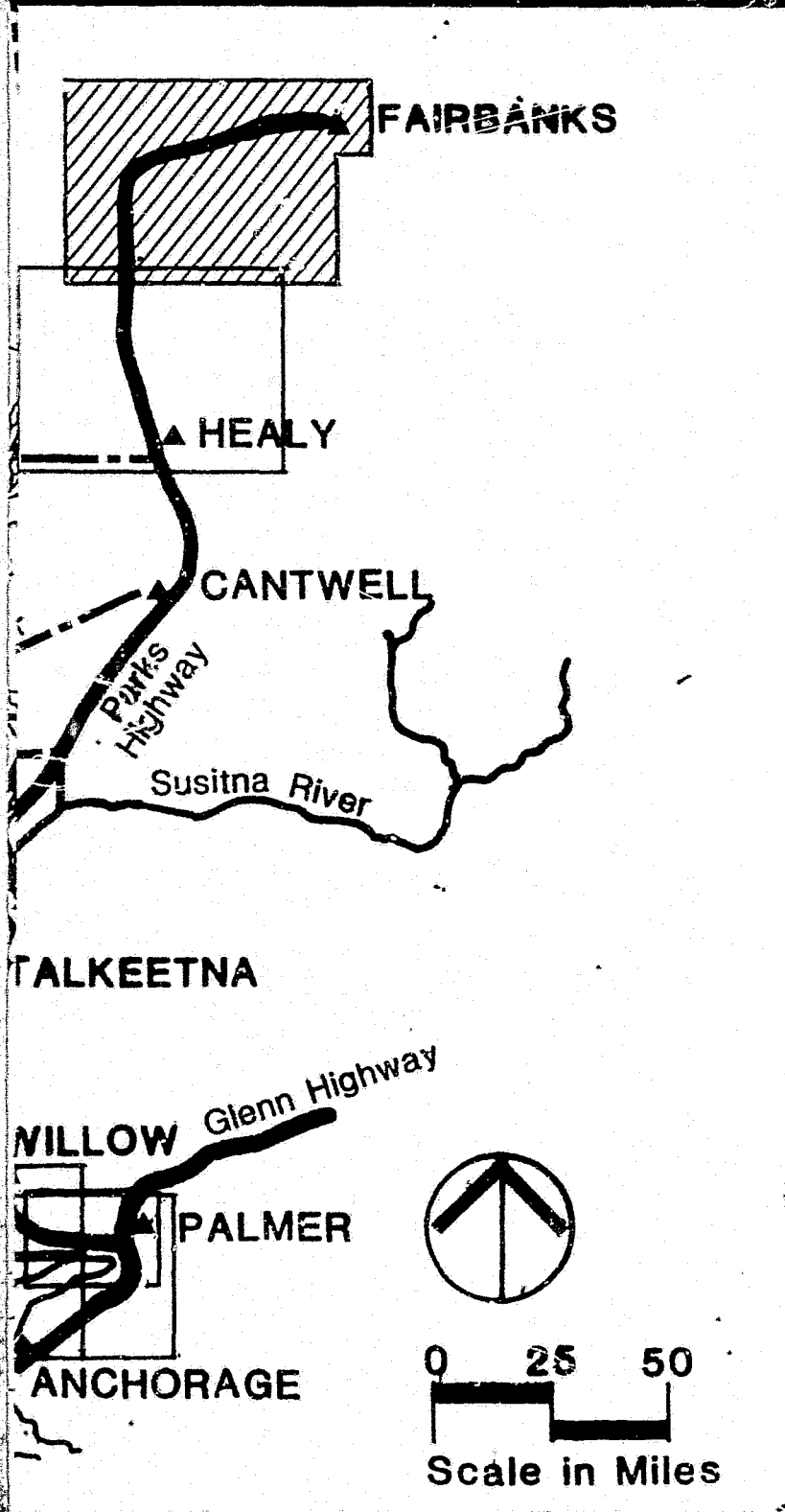
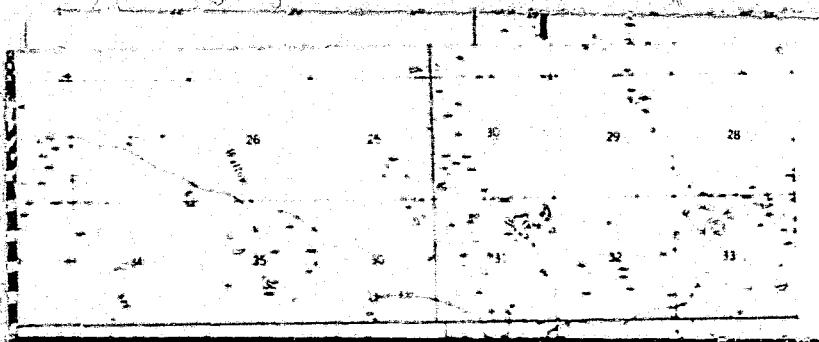
APPROVED

ANCHORAGE,
ALASKA

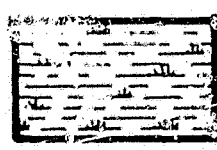
DATE

DRAWING NO.

22



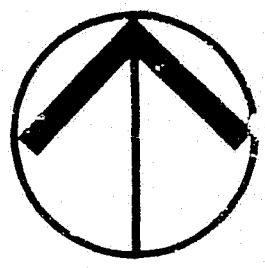
Low Shrub



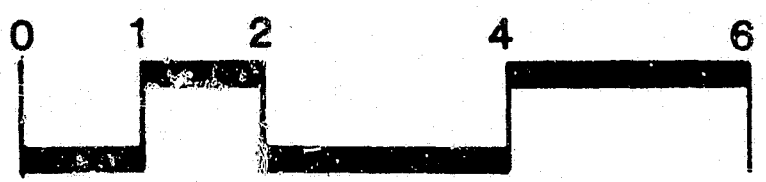
Wetland



Water/Developed/Barren



NORTH



SCALE IN MILES

ALASKA POWER AUTHORITY

SUSITNA HYDROELECTRIC PROJECT

North Study Area

Fairbanks Subarea

VEGETATION RESOURCES

HARZA-EBASCO

SUSITNA JOINT VENTURE

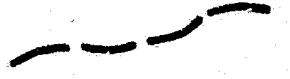
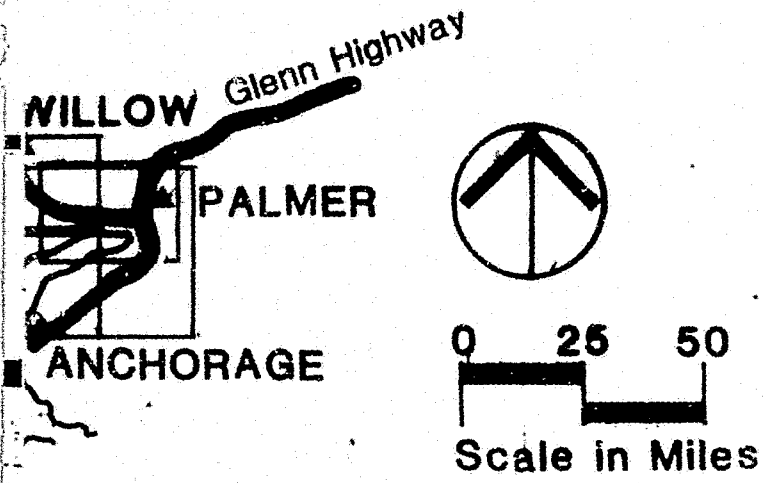
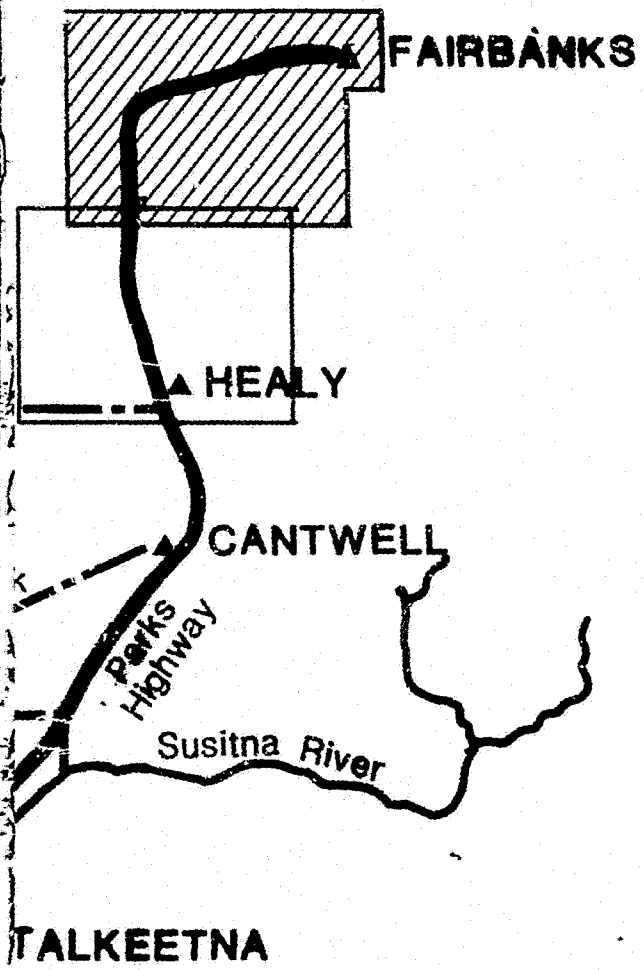
APPROVED

ANCHORAGE,
ALASKA

DATE

DRAWING NO.

23



Trails



State Recreation River



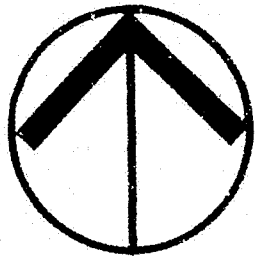
Transmission Line Segments



Potential Visual Resource Problem Areas

453

Average Daily Traffic



NORTH



SCALE IN MILES

ALASKA POWER AUTHORITY

SUSITNA HYDROELECTRIC PROJECT

North Study Area

Fairbanks Subarea

VISUAL RESOURCES

HARZA-EBASCO

SUSITNA JOINT VENTURE

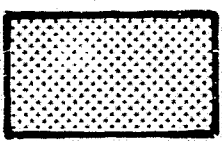
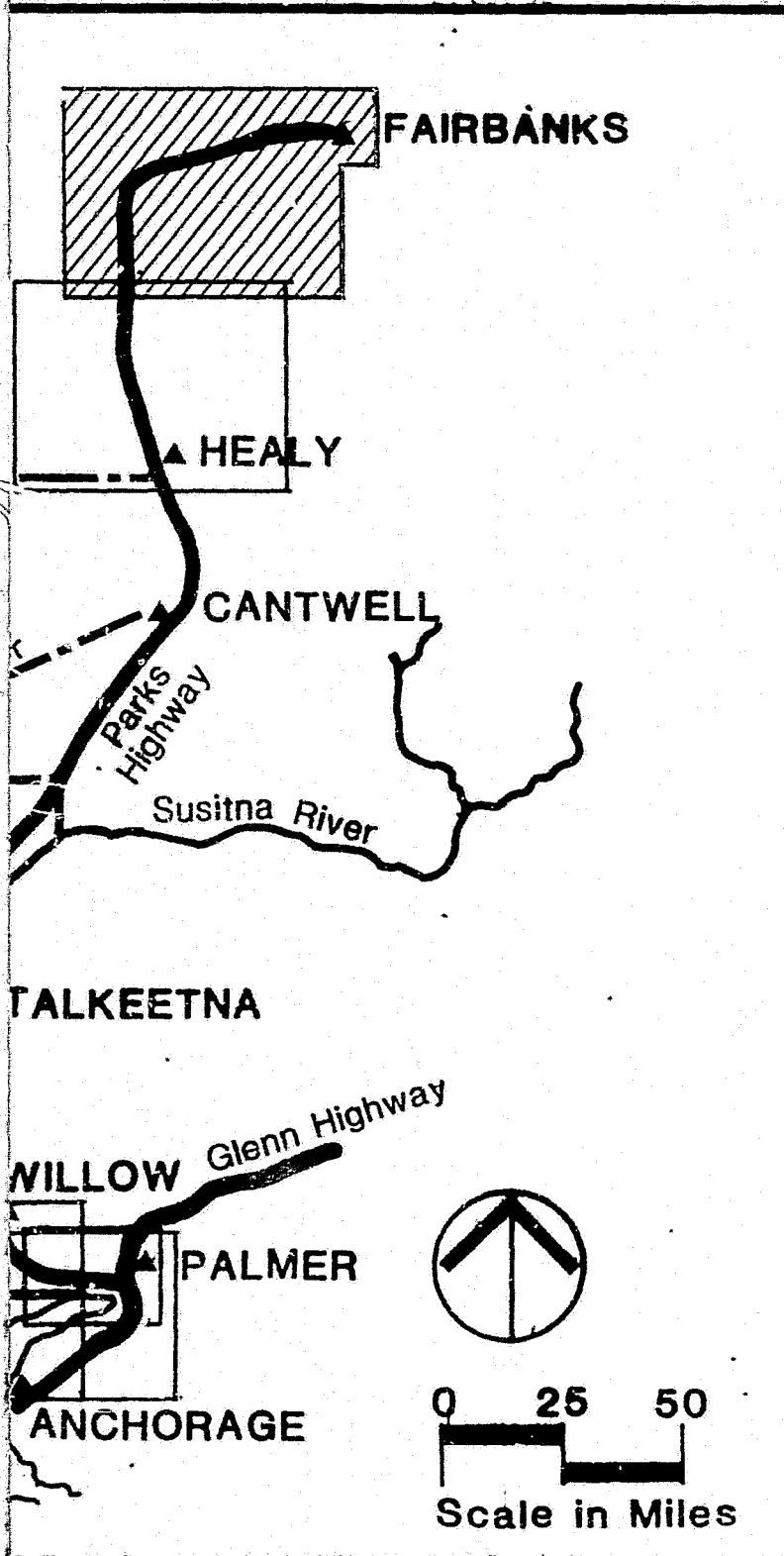
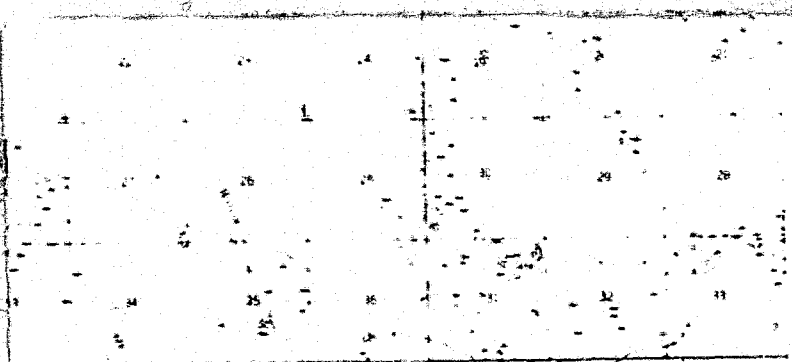
APPROVED

ANCHORAGE,
ALASKA

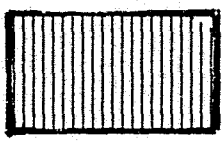
DATE

DRAWING NO.

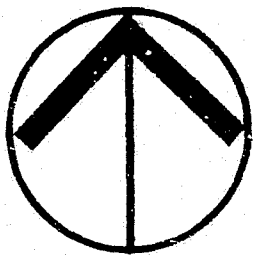
24



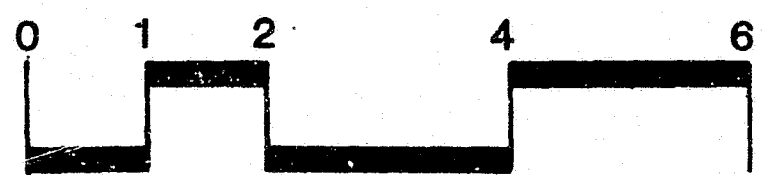
Prime Waterfowl Habitat



Critical Moose Habitat



NORTH



SCALE IN MILES

ALASKA POWER AUTHORITY

SUSITNA HYDROELECTRIC PROJECT

North Study Area

Fairbanks Subarea

FISH & WILDLIFE RESOURCES

HARZA-EBASCO

SUSITNA JOINT VENTURE

APPROVED

ANCHORAGE,
ALASKA

DATE

DRAWING NO.

25