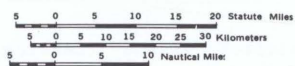


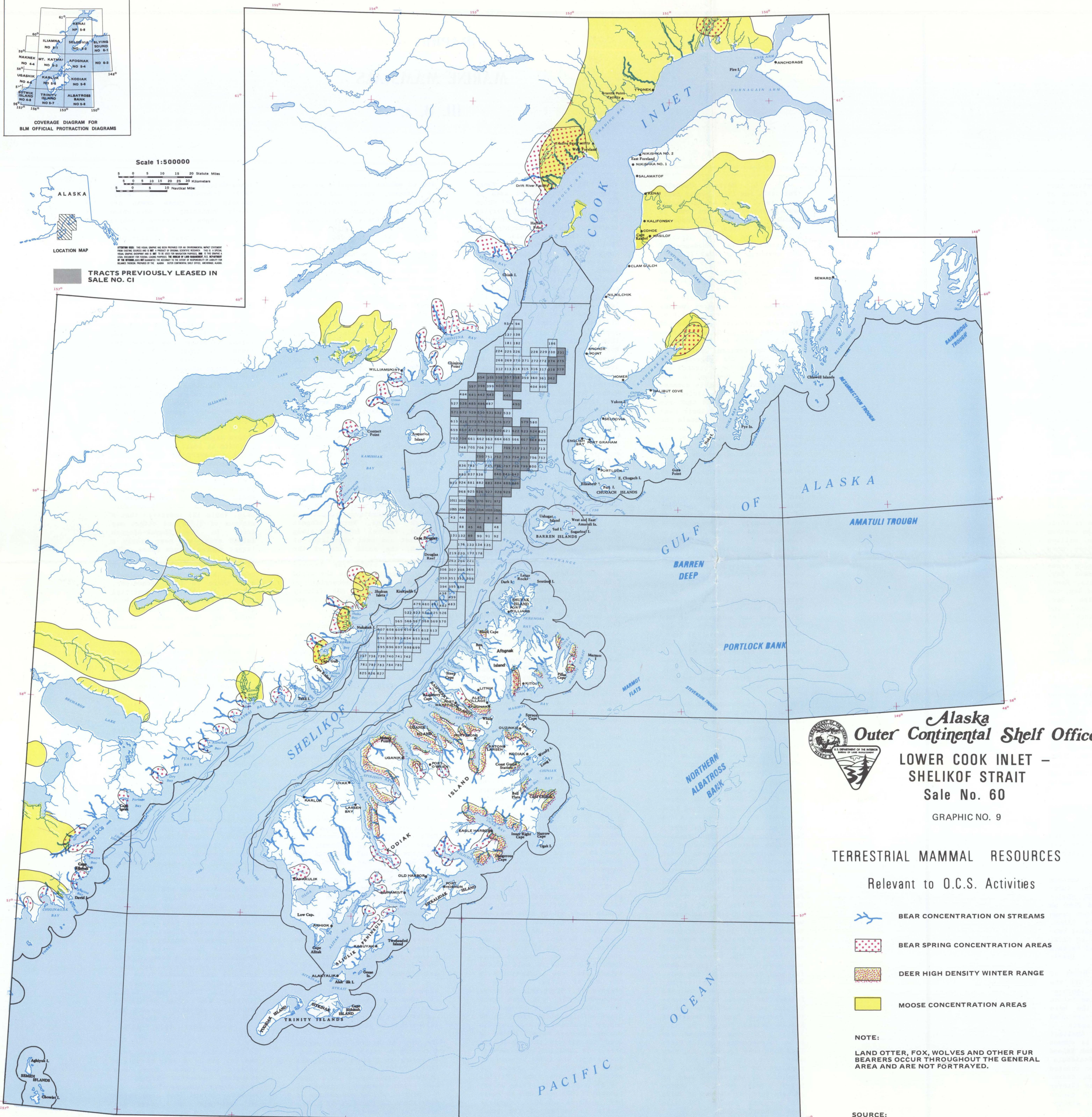
Scale 1:500000



LOCATION MAP

TRACTS PREVIOUSLY LEASED IN SALE NO. CI

NOTE: THIS VISUAL MAP WAS PREPARED FOR AN ENVIRONMENTAL IMPACT STATEMENT AND IS NOT A PRODUCT OF BUREAU SCIENTIFIC RESEARCH. THIS IS A VISUAL REPRESENTATION OF THE DATA AND IS NOT TO BE USED FOR MANAGEMENT PURPOSES. THE DATE OF THE INFORMATION IS NOT GUARANTEED BY THE BUREAU OF LAND MANAGEMENT. ALL INFORMATION IS PROVIDED WITHOUT WARRANTY OF ANY KIND. STATE OF ALASKA, BUREAU OF LAND MANAGEMENT, NORTHERN PENINSULA NATIONAL WILDLIFE REFUGE (a proposal)






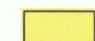
Alaska Outer Continental Shelf Office

LOWER COOK INLET - SHELIKOF STRAIT
Sale No. 60

GRAPHIC NO. 9

TERRESTRIAL MAMMAL RESOURCES

Relevant to O.C.S. Activities

-  BEAR CONCENTRATION ON STREAMS
-  BEAR SPRING CONCENTRATION AREAS
-  DEER HIGH DENSITY WINTER RANGE
-  MOOSE CONCENTRATION AREAS

NOTE:
LAND OTTER, FOX, WOLVES AND OTHER FUR BEARERS OCCUR THROUGHOUT THE GENERAL AREA AND ARE NOT PORTRAYED.

SOURCE:
ADF&G 1973, ALASKA'S WILDLIFE AND HABITAT
USDI FISH AND WILDLIFE SERVICE, 1980, ALASKA
PENINSULA NATIONAL WILDLIFE REFUGE (a proposal)