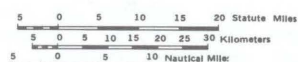


Scale 1:500000



ALASKA

LOCATION MAP

TRACTS PREVIOUSLY LEASED IN SALE NO. CI

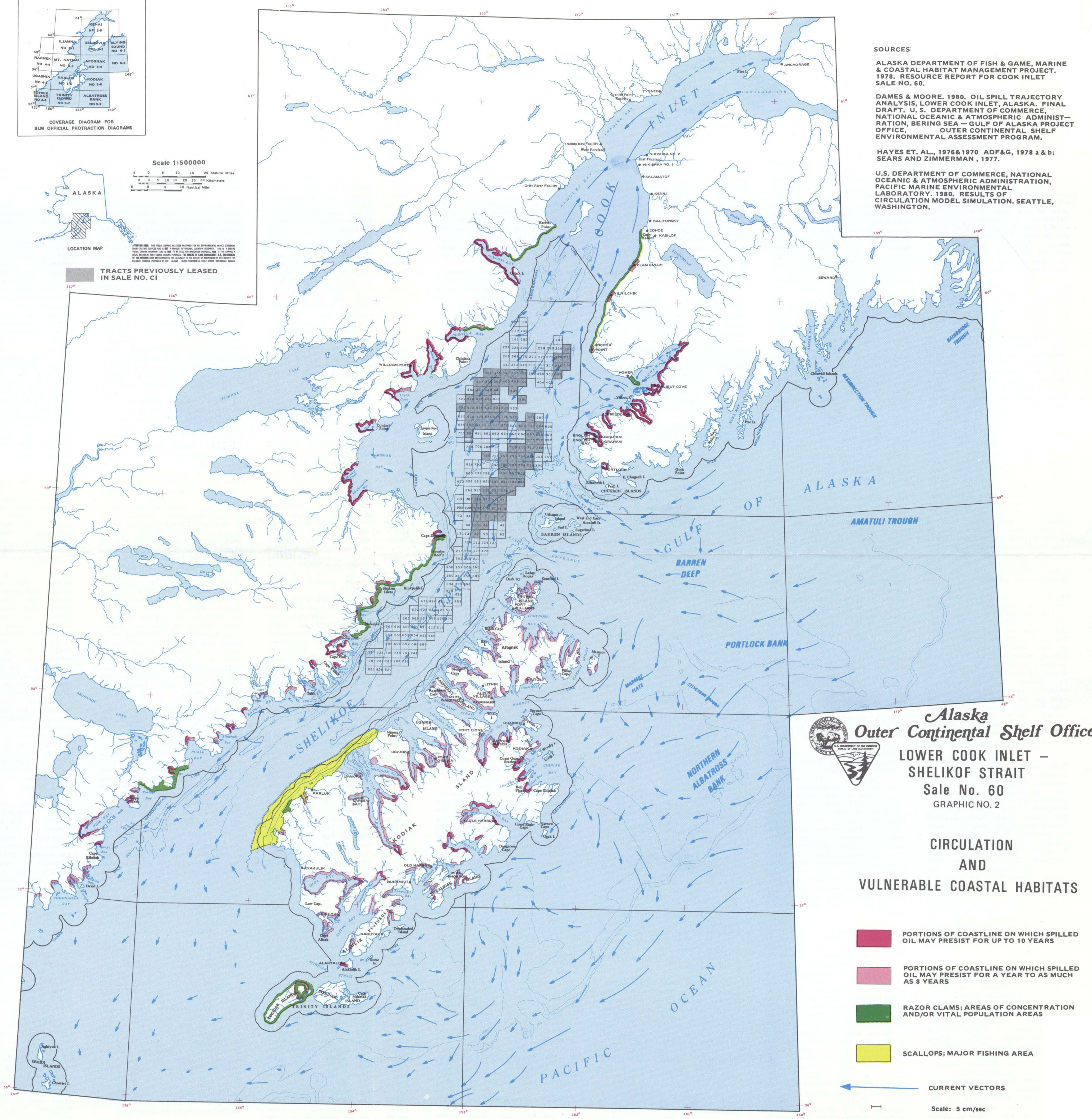
SOURCES:

ALASKA DEPARTMENT OF FISH & GAME, MARINE & COASTAL HABITAT MANAGEMENT PROJECT, 1978. RESOURCE REPORT FOR COOK INLET SALE NO. 60.

DAMES & MOORE, 1980. OIL SPILL TRAJECTORY ANALYSIS, LOWER COOK INLET, ALASKA. FINAL DRAFT. U. S. DEPARTMENT OF COMMERCE, NATIONAL OCEANIC & ATMOSPHERIC ADMINISTRATION, BERING SEA - GULF OF ALASKA PROJECT OFFICE, OUTER CONTINENTAL SHELF ENVIRONMENTAL ASSESSMENT PROGRAM.

HAYES ET. AL., 1976 & 1970 ADF&G, 1978 a & b; SEARS AND ZIMMERMAN, 1977.

U.S. DEPARTMENT OF COMMERCE, NATIONAL OCEANIC & ATMOSPHERIC ADMINISTRATION, PACIFIC MARINE ENVIRONMENTAL LABORATORY, 1980. RESULTS OF CIRCULATION MODEL SIMULATION. SEATTLE, WASHINGTON.



Alaska Outer Continental Shelf Office

LOWER COOK INLET - SHELIKOF STRAIT
Sale No. 60
GRAPHIC NO. 2

CIRCULATION AND VULNERABLE COASTAL HABITATS

- PORTIONS OF COASTLINE ON WHICH SPILLED OIL MAY PERSIST FOR UP TO 10 YEARS
- PORTIONS OF COASTLINE ON WHICH SPILLED OIL MAY PERSIST FOR A YEAR TO AS MUCH AS 8 YEARS
- RAZOR CLAMS; AREAS OF CONCENTRATION AND/OR VITAL POPULATION AREAS
- SCALLOPS; MAJOR FISHING AREA

CURRENT VECTORS
Scale: 5 cm/sec
Scale: 50 cm/sec (1 knot)